

# Department of Transportation

## Office of Project Development

700 E Broadway Avenue

Pierre, South Dakota 57501-2586 605/773-3268

FAX: 605/773-2614

March 15, 2019

### ADDENDUM NO. 1

**RE: Item #4, March 20, 2019 Letting - NH 0012(207)248, PCN 05E2, Edmunds County - Cold Milling Asphalt Concrete, Asphalt Concrete Resurfacing, & Culvert Repair**

#### TO WHOM IT MAY CONCERN:

The following addenda to the plans shall be inserted and made a part of your proposal for the referenced project.

**SPECIAL PROVISIONS:** NO CHANGE

**SDEBS BID PROPOSAL:** NO CHANGE

**PLANS:** Please destroy sheet 71 and replace with the enclosed sheet, dated 3/12/19. Sheet 71A was added.

**Sheets 52 and 53:** **PEN AND INK CHANGE:** please change all references from 630.88 to 630.89

**Sheet 71:** Standard Plate 630.88 was removed.

**Sheet 71A:** Standard Plate 630.89 was added.

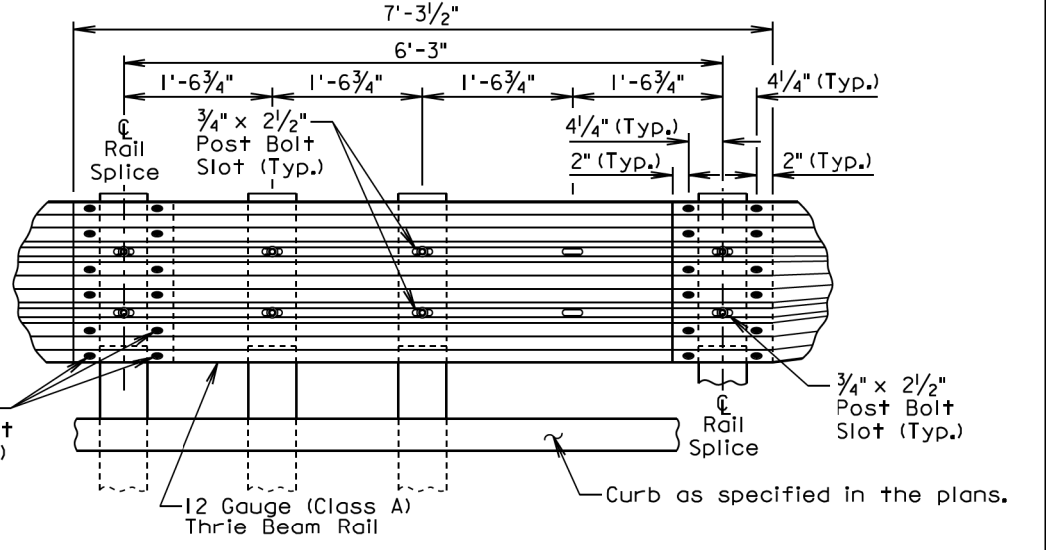
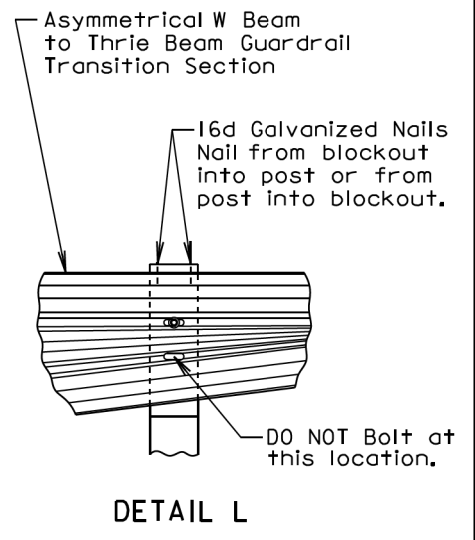
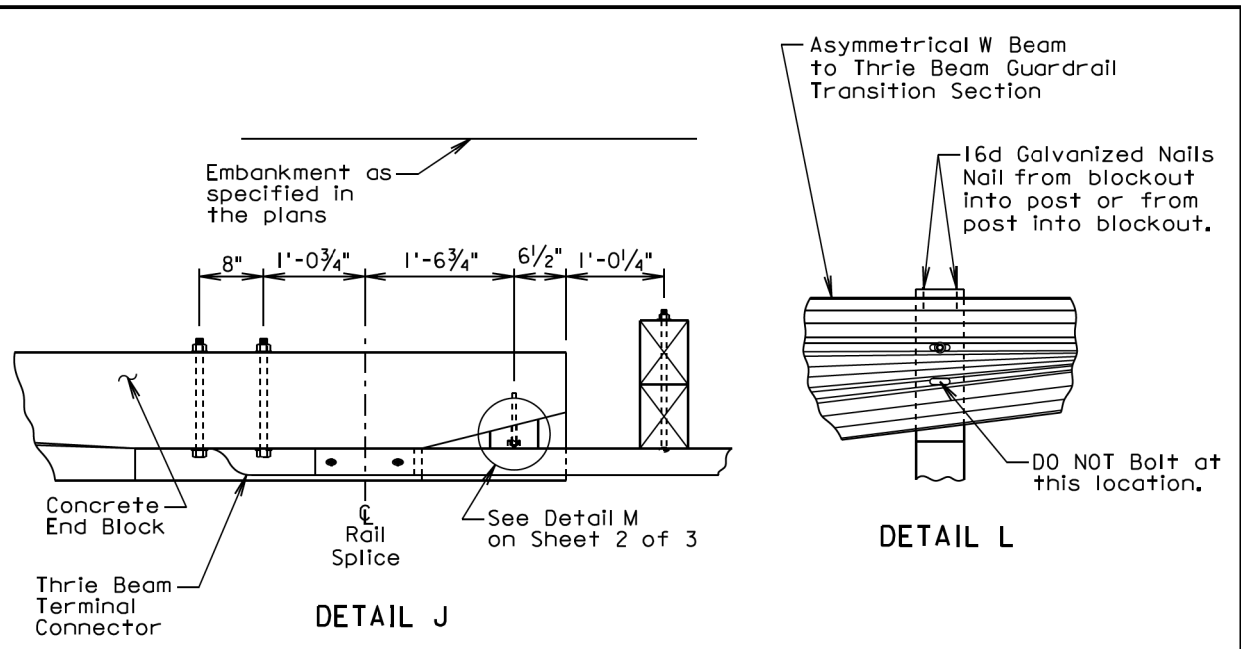
Sincerely,

Sam Weisgram  
Engineering Supervisor

SW/cj

CC: Jeff Senst, Aberdeen Region Engineer  
Phil Dwight, Aberdeen Area Engineer

Plotting Date: 03/12/2019  
Revised 3-12-19 BMR



**DETAIL K**  
(Special Thrie Beam Rail)

**GENERAL NOTES:**

Throughout the type I retrofit guardrail transition, slots in the rails shall be provided as specified in the plans and by the Manufacturer. A drilled hole through the rail is not allowed as a replacement for a slot. If the Contractor must create a slot, a cutting torch or plasma cutter is not allowed. The slot edges shall be smooth and free of burrs or notches.

All costs for furnishing and installing the type I retrofit guardrail transition including labor, equipment, and materials which includes all rail sections, posts and blockouts, special blockout, hardware, and incidentals shall be included in the contract unit price per each for "Type I Retrofit Guardrail Transition".

February 14, 2017

<b>S D D O T</b>	<b>TYPE 1 RETROFIT GUARDRAIL TRANSITION (CONCRETE END BLOCK TO MIDWEST GUARDRAIL SYSTEM (MGS))</b>	<b>PLATE NUMBER 630.51</b>
	<i>Published Date: 1st Qtr. 2019</i>	Sheet 3 of 3

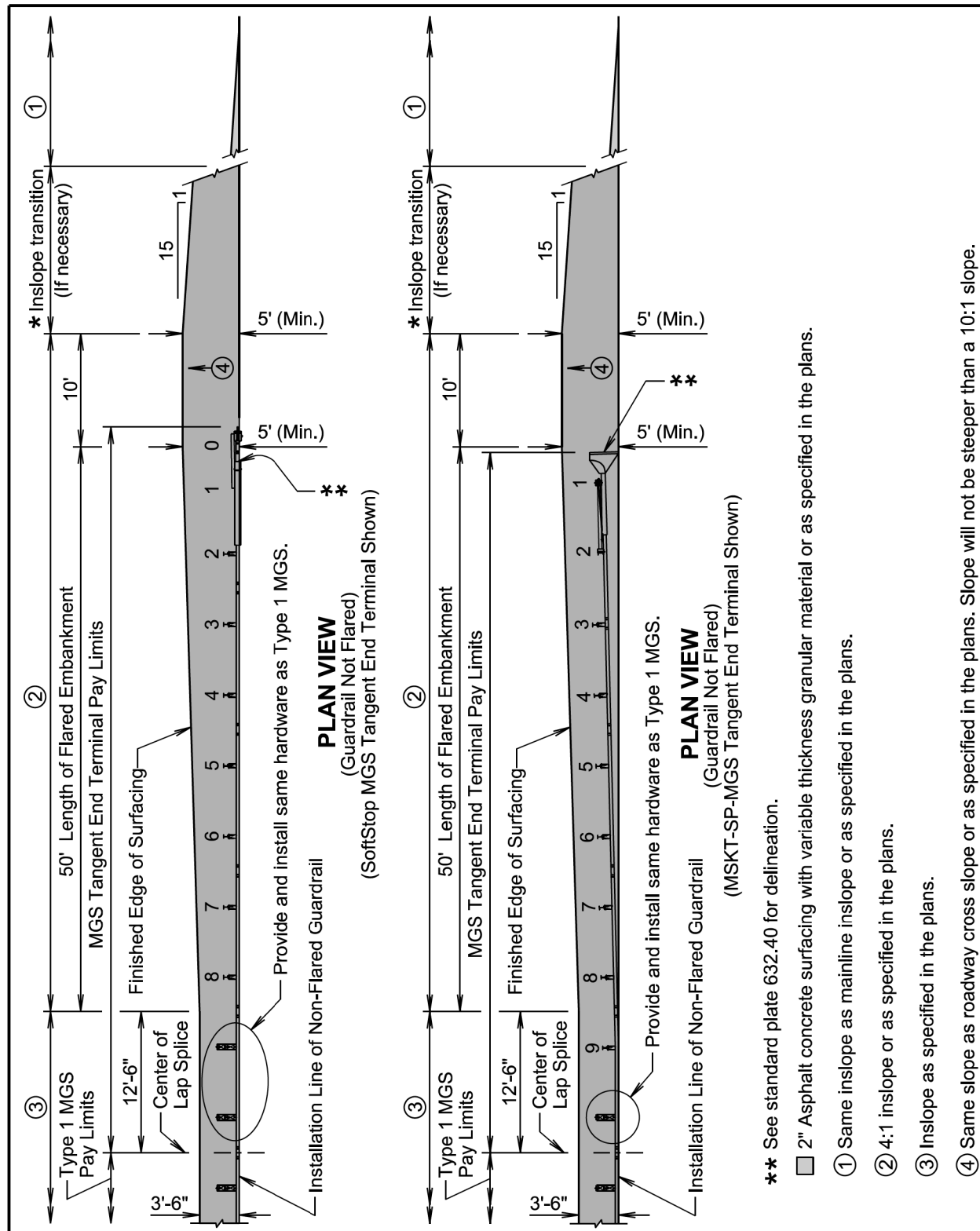
PLOT SCALE - 1:200

-PLOTTED FROM - TRPR13654

PLOT NAME - 1

FILE - H:\630.51(3) - DGN

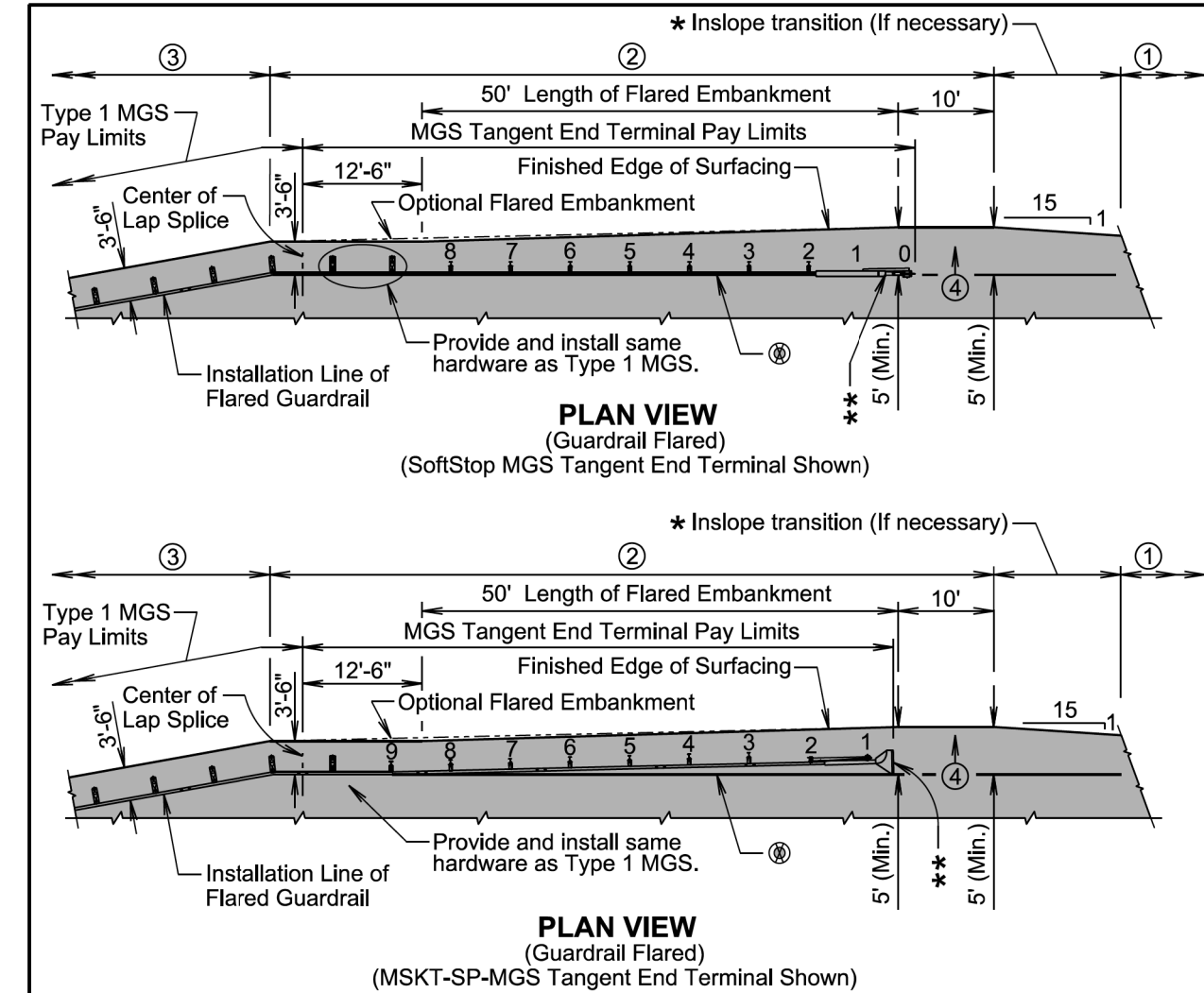
Plotting Date: 03/12/2019  
Revised 3-12-19 BMR



- \*\* See standard plate 632.40 for delineation.
- 2" Asphalt concrete surfacing with variable thickness granular material or as specified in the plans.
- ① Same inslope as mainline inslope or as specified in the plans.
- ② 4:1 inslope or as specified in the plans.
- ③ Inslope as specified in the plans.
- ④ Same slope as roadway cross slope or as specified in the plans. Slope will not be steeper than a 10:1 slope.

November 14, 2018

Published Date: 1st Qtr. 2019	S D D O T	EMBANKMENT, SURFACING, AND PAYMENT LIMITS FOR MGS TANGENT END TERMINAL	PLATE NUMBER 630.89
			Sheet 1 of 2



**GENERAL NOTES:**

- The MGS tangent end terminals above are for illustrative purpose only.
- \* The length of inslope transition varies with the amount of change between inslopes. The length of the transition will change 100' for every whole number change in the inslope. For Example: If the inslope changes from a 5:1 to a 4:1 the length of the inslope transition would be 100'. If the inslope changes from a 6:1 to a 4:1 the length of the inslope transition would be 200'.
- ⊗ The installation reference line for MGS tangent end terminals will always be parallel to the roadway.
- Asphalt concrete will be the same type used elsewhere on the project or will be as specified in the plans. If asphalt concrete is not specified in the plans, the asphalt concrete will conform to the Specifications for "Asphalt Concrete Composite."
- Granular material will be the same type used elsewhere on the project or will be as specified in the plans. If granular material type is not specified in the plans, the material will conform to the Specifications for "Base Course". The granular material will be placed the same thickness as the mainline surfacing or as specified in the plans.

November 14, 2018

Published Date: 1st Qtr. 2019	S D D O T	EMBANKMENT, SURFACING, AND PAYMENT LIMITS FOR MGS TANGENT END TERMINAL	PLATE NUMBER 630.89
			Sheet 2 of 2