

March 26, 2024

ADDENDUM NO. 1

RE: Item #11, April 4, 2024 Letting - P-PH-B-PT 0010(124)296, PCN 05F4, Brown, Marshall County - Shoulder Widening, Replace Str RCBC (2-10x4 CIP Box or 2-11x4 Precast Box; 4-12x12 CIP Box; 2-11x4 CIP Box; 10-5 CIP or 11x5 Precast), Approach Grading, Modify Intersection, Pipe Work

TO WHOM IT MAY CONCERN:

The following addenda to the plans shall be inserted and made a part of your proposal for the referenced project.

SPECIAL PROVISIONS: Please remove the Index of Special Provisions and replace with attached Index of Special Provisions revised 3/25/24.

Please remove the "Special Provision for Contract Time", dated 1/24/24 and replace with the "Special Provision for Contract Time", dated 3/25/24.

CONTRACTOR'S SHAREPOINT FILES: Linework.dgn and Linework.dwg files were revised.

SDEBS BID PROPOSAL: *The electronic bid proposal for this contract has been revised to include the changes associated with this addendum. Bidders must log in to the SDEBS to retrieve and incorporate these changes into their bid.*

Bid Items were added:

Bid Item 009E1000 "Incentive/Disincentive Pay"

A contract item for incentive/disincentive pay is included in the bid schedule for the Department's use in assessing disincentive.

Quantities for Bid Items were changed:

Bid Item 450E4759 for "18" CMP 16 Gauge, Furnish" changed from 2,290 to 2,298 Ft

Bid Item 450E4760 for "18" CMP, Install" changed from 2,290 to 2,298 Ft

Bid Item 620E0020 for "Type 2 Right-of-Way Fence" changed from 13,190 to 12,429 Ft

Bid Item 620E0030 for "Type 3 Right-of-Way Fence" changed from 8,819 to 9,580 Ft

Bid Item 620E0515 for" Type 1A Temporary Fence" changed from 13,820 to 11,950 Ft

PLANS: Please destroy sheets A1, B2, B18, B19, B53, B55, B67, B73, B74, B85, B86, B98, X19, X21, X51, X52, and Z32 and replace with the enclosed sheets, dated 3/12/24, 3/13/24, 3/20/24, and 3/21/24.

Sheets A1 & B2: Quantities for Bid Items were changed:

Bid Item 450E4759 for "18" CMP 16 Gauge, Furnish" changed from 2,290 to 2,298 Ft

Bid Item 450E4760 for "18" CMP, Install" changed from 2,290 to 2,298 Ft
Bid Item 620E0020 for "Type 2 Right-of-Way Fence" changed
from 13,190 to 12,429 Ft
Bid Item 620E0030 for "Type 3 Right-of-Way Fence" changed
from 8,819 to 9,580 Ft
Bid Item 620E0515 for " Type 1A Temporary Fence" changed from 13,820 to
11,950 Ft

Sheet B18: PIPE QUANTITIES table was revised. Sta 1222+83 L to 1222+79 L was.

Sheet B19: FENCE QUANTITIES table was revised.

Sheets B53 & B55: Parcel 9 fence notes were revised.

Sheet B67: Parcel 24 & 26 fence notes were revised and "Guardrail Fence to be Salvaged by Others" note was added.

Sheet B73: Entrances at 1035+80 R and 1042+58 R (and adjacent fence/gate) were revised.

Sheet B74: Entrance notes at 1035+80 R and 1042+58 R were revised.

Sheet B85: Entrances at 1213+94 L and 1222+79 L (and adjacent fence/gate) were revised, approach pipe at 1222+79 L was revised, due to entrance change, fence from 1215+78 L to 1222+98 L changed from Type 2 to Type 3, and "Guardrail Fence to be Salvaged by Others" note was added.

Sheet B86: Entrance notes at 1213+94 L and 1222+79 L were revised.

Sheet B98: Intersection layout was revised due to entrance change.

Sheets X19, Z21, X51, & X52: Entrance notes were revised according to Section B revisions.

Sheet Z32: Approach pipe section at 1222+79 L was revised.

Sincerely,

Sam Weisgram
Engineering Supervisor

SW/cj

CC: Mark Peterson, Aberdeen Region Engineer
Bruce Schroeder, Aberdeen Area Engineer

REV 3/25/24

INDEX OF SPECIAL PROVISIONS

PROJECT NUMBER(S): P-PH-B-PT 0010(124)296 PCN: 05F4

TYPE OF WORK: SHOULDER WIDENING, REPLACE STR RCBC (2-10X4 CIP BOX OR 2-11X4 PRECAST BOX; 4-12X12 CIP BOX; 2-11X4 CIP BOX; 10-5 CIP OR 11X5 PRECAST), APPROACH GRADING, MODIFY INTERSECTION, PIPE WORK

COUNTIES: BROWN, MARSHALL

The following clauses have been prepared subsequent to the Standard Specifications for Roads and Bridges and refer only to the above described improvement, for which the following Proposal is made.

The Contractor's attention is directed to the need for securing from the Department of Environment & Natural Resources, Foss Building, Pierre, South Dakota, permission to remove water from public sources (lakes, rivers, streams, etc.). The Contractor should make his request as early as possible after receiving his contract, and insofar as possible at least 30 days prior to the date that the water is to be used.

Ashley Glaspell, Lisa Johnson is the official in charge of the Aberdeen, Watertown Career Center for Brown, Marshall Counties.

THE FOLLOWING ITEMS ARE INCLUDED IN THIS PROPOSAL FORM:

Special Provision for Contract Time, dated 3/25/24.

Special Provision for Traffic Control Supervisor, dated 5/30/23.

Special Provision for On-The-Job Training Program, dated 3/10/16.

Special Provision Regarding Right of Entry/Work Limits, dated 2/7/24.

Special Provision Regarding Restricted Work at Drainage Crossings or Wetlands, dated 2/7/24.

Agreement to sell Materials, Gerald L Schneider and Dorthy A Schneider.

Special Provision Regarding Railroad Insurance Requirements for Dakota, Missouri Valley & Western Railroad, dated 1/23/24.

NOTE: The Contractor WILL NOT be granted permission to proceed with any work on Railroad Right-of-Way until he has been notified by the Railroad that the insurance has been approved and the insurances and certificates has been provided to the SDDOT area office.

Special Provision Regarding Working on Railroad Property for Dakota, Missouri Valley & Western Railroad, dated 1/23/24.

**Special Provision for Contractor Staking with Machine Control
Grading Option, dated 6/5/23.**

List of Utilities.

Special Provision for Acknowledgment and Certification Regarding Article 3, Section 12 of the South Dakota Constitution, dated 8/24/23.
Special Provision for Buy America, dated 12/6/23.
Special Provision for Liability Insurance, dated 4/21/22.
Special Provision for Responsibility for Damage Claims, dated 4/21/22.
Special Provision for Restriction of Boycott of Israel, dated 1/31/20.
Special Provision for Contractor Administered Preconstruction Meeting, dated 12/18/19.
Fuel Adjustment Affidavit, DOT form 208 dated 7/15.
Standard Title VI Assurance, dated 3/1/16.
Special Provision For Disadvantaged Business Enterprise, dated 8/14/18.
Special Provision For EEO Affirmative Action Requirements on Federal and Federal-Aid Construction Contracts, dated 9/1/97.
Special Provision For Required Contract Provisions Federal-Aid Construction Contracts, Form FHWA 1273 (Rev. October 23, 2023), dated 10/18/23.
Required Contract Provisions Federal-Aid Construction Contracts, Form FHWA 1273 (Rev. 10/23/23).
Special Provision Regarding Minimum Wage on Federal-Aid Projects, dated 10/24/19.
Wage and Hour Division US Department of Labor Washington DC. - US Dept. of Labor Decision Number SD20230032, dated 3/10/23.
Special Provision for Supplemental Specifications to 2015 Standard Specifications for Roads and Bridges, dated 9/7/22.
Special Provision for Price Schedule for Miscellaneous Items, dated 12/6/23.

Special Provision Regarding Storm Water Discharge, dated 5/8/18.
General Permit for Storm Water Discharges Associated with Construction Activities, dated 4/1/18
<https://danr.sd.gov/OfficeOfWater/SurfaceWaterQuality/stormwater/StormWaterConstruction.aspx>

**STATE OF SOUTH DAKOTA
DEPARTMENT OF TRANSPORTATION**

**SPECIAL PROVISION
FOR
CONTRACT TIME**

**PROJECT P-PH-B-PT 0010(124)296; PCN 05F4
BROWN & MARSHALL COUNTY**

MARCH 25, 2024

November 1, 2024 Interim Completion Requirement

The Contractor will complete 8 continuous miles of SD 10 by the November 1, 2024 interim completion date. The Department will consider 8 continuous miles of SD 10 complete when traffic is no longer impaired, and all work is complete.

The Engineer, in the Engineer's sole discretion, will determine when 8 continuous miles of SD 10 are complete. In the event pavement is not able to be placed the Contractor will shape the base course to a 4% or less slope and chloride the base course. Payment for the chloride shall be as per the price schedule in the special provision.

If the Contractor does not complete the work by the interim completion requirement, the Department will make a disincentive assessment in the amount of \$500 per working day. A contract item for incentive/disincentive pay is included in the bid schedule for the Department's use in assessing disincentive. The Department will use a negative quantity of days for assessing disincentives. The Department will count working days in accordance with Section 8.6 C.

October 15, 2025 Substantial Completion Requirement

The Contractor will substantially complete the project by the October 15, 2025 substantial completion date.

The Department will consider the work substantially complete when all lanes are open to unimpeded traffic, and all work is complete except the following:

Permanent pavement markings, seeding, and permanent erosion control measures.

The Engineer, in the Engineer's sole discretion, will determine when the project is substantially complete.

Field Work Completion

The Contractor will complete the project by the November 14, 2025 field work completion date.

Failure to Complete on Time

The Contractor will substantially complete the project prior to the substantial completion requirement. If the Contractor does not complete the work by the substantial completion requirement, the Department will assess liquidated damages in accordance with Section 8.8 Table A. The Department will assess liquidated damages for each working day the work (project) is late until the Contractor substantially completes the work.

In the event the Contractor does not substantially complete the work on time, the Department will count working days in accordance with Section 8.6 C.

The Contractor will complete all work on the project prior to the field work completion requirement. If the Contractor does not complete all work by the field work completion requirement, the Department will assess liquidated damages in accordance with Section 8.8. The Department will assess liquidated damages for each working day the work (project) is late until the Contractor completes all field work.

In the event the Contractor does not complete all field work on time, the Department will count working days in accordance with Section 8.6 C.

Expected Adverse Weather Days

The Department has provided Attachment 1 for information purposes only as a guide to bidders. Table 1 depicts the typical number of adverse weather days expected for any given month, based on historical records. The Department will consider this project a structural project in Zone 5.

The Department will consider expected adverse weather days cumulative in nature over the time period when the Contractor is actively pursuing completion of the work. The Department will not consider adverse weather days during an extended period of time when the Contractor is not pursuing completion of the work. When considering a time extension for interim completion, substantial completion, or field work completion of the project, the Engineer will compare the total number of expected adverse weather days against the total number of actual adverse weather days for the time period during which the work was being completed.

* * * * *

ATTACHMENT 1

Figure A - Expected Adverse Weather Days for South Dakota

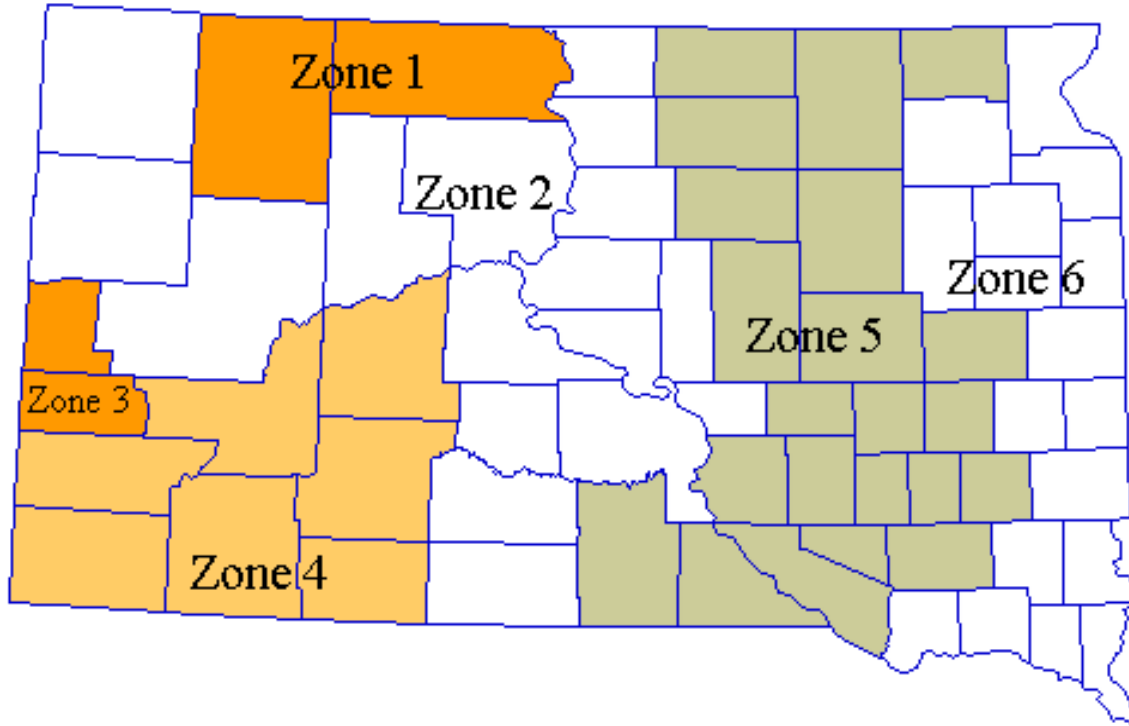


Table 1 - Expected Adverse Weather Days for South Dakota

	Grading Projects						Surfacing and Structural Projects					
	Zone 1	Zone 2	Zone 3	Zone 4	Zone 5	Zone 6	Zone 1	Zone 2	Zone 3	Zone 4	Zone 5	Zone 6
Jan	18	18	16	16	22	24	18	18	15	16	21	23
Feb	19	18	12	14	19	21	19	18	12	14	19	21
Mar	12	10	9	8	11	13	12	10	9	8	10	12
Apr	6	5	8	5	6	6	5	4	6	4	4	4
May	6	6	8	6	6	6	5	5	6	4	4	5
Jun	7	6	7	6	7	8	5	5	5	4	5	6
Jul	5	5	6	5	6	7	4	4	5	3	4	5
Aug	4	4	5	4	5	6	3	3	4	3	4	4
Sep	3	3	4	3	4	5	2	2	3	2	3	4
Oct	4	3	5	3	4	4	3	3	4	2	3	3
Nov	11	9	8	7	10	12	11	9	8	7	10	11
Dec	21	19	15	14	20	22	21	19	15	14	20	22

NOTE: Includes Holidays and Weekends.

ESTIMATE OF QUANTITIES AND ENVIRONMENTAL COMMITMENTS

STATE OF SOUTH DAKOTA	PROJECT	SHEET	TOTAL SHEETS
	P-PH-B-PT 0010(124)296	A1	A7
Plotting Date: 03/21/2024		Rev 03/21/2024 DRM	

Section B - Grading

BID ITEM NUMBER	ITEM	QUANTITY	UNIT
004E0030	Maintenance of Traffic Diversion(s)	Lump Sum	LS
004E0050	Remove Traffic Diversion(s)	Lump Sum	LS
009E0010	Mobilization	Lump Sum	LS
009E3220	Reestablish Right-of-Way and Property Corner	152	Each
009E3225	Reestablish Public Land Survey System Corner	38	Each
009E3230	Grade Staking	16.423	Mile
009E3245	Final Cross Section Survey	16.423	Mile
009E3250	Miscellaneous Staking	16.423	Mile
009E3280	Slope Staking	16.423	Mile
009E3290	Structure Staking	4	Each
009E3301	Engineer Directed Surveying/Staking	40.0	Hour
100E0100	Clearing	Lump Sum	LS
110E0600	Remove Fence	47,665	Ft
110E0700	Remove 3 Cable Guardrail	344	Ft
110E0730	Remove Beam Guardrail	583.0	Ft
110E0740	Remove 3 Cable Guardrail Anchor Assembly	1	Each
110E0745	Remove 3 Cable Guardrail Slip Base Anchor Assembly	1	Each
110E1010	Remove Asphalt Concrete Pavement	4,164.8	SqYd
110E5451	Salvage Riprap	3,992.0	Ton
110E7500	Remove Pipe for Reset	58	Ft
110E7510	Remove Pipe End Section for Reset	38	Each
120E0010	Unclassified Excavation	512,648	CuYd
120E0500	Option Borrow Excavation	284,420	CuYd
120E1000	Muck Excavation	65,177	CuYd
120E2000	Undercutting	160,298	CuYd
120E6100	Water for Embankment	5,685.0	MGal
205E0010	Dust Control Chloride	683,280	Lb
250E0020	Incidental Work, Grading	Lump Sum	LS
260E6010	Granular Material	2,495.1	Ton
270E0040	Salvage and Stockpile Asphalt Mix and Granular Base Material	50,755.0	Ton
421E0100	Pipe Culvert Undercut	1,320	CuYd
450E0142	24" RCP Class 2, Furnish	1,098	Ft
450E0150	24" RCP, Install	1,098	Ft
450E0162	30" RCP Class 2, Furnish	920	Ft
450E0170	30" RCP, Install	920	Ft
450E0192	42" RCP Class 2, Furnish	172	Ft
450E0200	42" RCP, Install	172	Ft
450E0202	48" RCP Class 2, Furnish	240	Ft
450E0210	48" RCP, Install	240	Ft
450E0222	60" RCP Class 2, Furnish	96	Ft
450E0230	60" RCP, Install	96	Ft
450E2008	18" RCP Flared End, Furnish	3	Each

Section B - Grading (continued)

BID ITEM NUMBER	ITEM	QUANTITY	UNIT
450E2009	18" RCP Flared End, Install	3	Each
450E2016	24" RCP Flared End, Furnish	4	Each
450E2017	24" RCP Flared End, Install	4	Each
450E2032	42" RCP Flared End, Furnish	4	Each
450E2033	42" RCP Flared End, Install	4	Each
450E2036	48" RCP Flared End, Furnish	6	Each
450E2037	48" RCP Flared End, Install	6	Each
450E2044	60" RCP Flared End, Furnish	2	Each
450E2045	60" RCP Flared End, Install	2	Each
450E2200	24" RCP Sloped End, Furnish	24	Each
450E2201	24" RCP Sloped End, Install	24	Each
450E2204	30" RCP Sloped End, Furnish	18	Each
450E2205	30" RCP Sloped End, Install	18	Each
450E3012	24" RCP Arch Class 2, Furnish	64	Ft
450E3020	24" RCP Arch, Install	64	Ft
450E3022	30" RCP Arch Class 2, Furnish	196	Ft
450E3030	30" RCP Arch, Install	196	Ft
450E3032	36" RCP Arch Class 2, Furnish	246	Ft
450E3040	36" RCP Arch, Install	246	Ft
450E3042	42" RCP Arch Class 2, Furnish	188	Ft
450E3050	42" RCP Arch, Install	188	Ft
450E4512	36" RCP Arch Flared End, Furnish	7	Each
450E4513	36" RCP Arch Flared End, Install	7	Each
450E4516	42" RCP Arch Flared End, Furnish	6	Each
450E4517	42" RCP Arch Flared End, Install	6	Each
450E4600	24" RCP Arch Sloped End, Furnish	2	Each
450E4601	24" RCP Arch Sloped End, Install	2	Each
450E4604	30" RCP Arch Sloped End, Furnish	6	Each
450E4605	30" RCP Arch Sloped End, Install	6	Each
450E4759	18" CMP 16 Gauge, Furnish	2,298	Ft
450E4760	18" CMP, Install	2,298	Ft
450E4769	24" CMP 16 Gauge, Furnish	422	Ft
450E4770	24" CMP, Install	422	Ft
450E4779	30" CMP 16 Gauge, Furnish	602	Ft
450E4780	30" CMP, Install	602	Ft
450E4789	36" CMP 16 Gauge, Furnish	64	Ft
450E4790	36" CMP, Install	64	Ft
450E5318	36" CMP Sloped End, Furnish	1	Each
450E5319	36" CMP Sloped End, Install	1	Each
450E5406	18" CMP Safety End, Furnish	68	Each
450E5407	18" CMP Safety End, Install	68	Each
450E5410	24" CMP Safety End, Furnish	14	Each
450E5411	24" CMP Safety End, Install	14	Each

INDEX OF SHEETS

A1 to A3 Estimate of Quantities for Sections B, C, D, E, F, M, and S
A4 to A7 Environmental Commitments

Section B - Grading (continued)

BID ITEM NUMBER	ITEM	QUANTITY	UNIT
450E5414	30" CMP Safety End, Furnish	20	Each
450E5417	30" CMP Safety End, Install	20	Each
450E5529	30" CMP Arch 16 Gauge, Furnish	122	Ft
450E5530	30" CMP Arch, Install	122	Ft
450E5599	84" CMP Arch 14 Gauge, Furnish	162	Ft
450E5600	84" CMP Arch, Install	162	Ft
450E5910	30" CMP Arch Sloped End, Furnish	4	Each
450E5911	30" CMP Arch Sloped End, Install	4	Each
450E6014	30" CMP Arch Safety End, Furnish	2	Each
450E6017	30" CMP Arch Safety End, Install	2	Each
450E8300	Culvert Joint Cleaning	47.0	Ft
450E8305	Repair Culvert Joint	47.0	Ft
450E8310	Chemical Grout Void Fill	57.1	Gal
* 450E8900	Cleanout Pipe Culvert	24	Each
450E9000	Reset Pipe	58	Ft
450E9001	Reset Pipe End Section	38	Each
451E0012	12" PVC Encasement Pipe	24	Ft
462E0100	Class M6 Concrete	17.4	CuYd
464E0100	Controlled Density Fill	262.9	CuYd
600E0300	Type III Field Laboratory	1	Each
620E0020	Type 2 Right-of-Way Fence	12,429	Ft
620E0030	Type 3 Right-of-Way Fence	9,580	Ft
620E0060	Type 6 Right-of-Way Fence	4,446	Ft
620E0515	Type 1A Temporary Fence	11,950	Ft
620E0520	Type 2 Temporary Fence	1,080	Ft
620E1020	2 Post Panel	39	Each
620E1030	3 Post Panel	64	Each
620E2016	16' Tubular Gate	2	Each
700E2010	Place Riprap	3,992.0	Ton
831E0110	Type B Drainage Fabric	13,073	SqYd
831E0300	Reinforcement Fabric (MSE)	8,750	SqYd
900E0010	Refurbish Single Mailbox	15	Each
900E1150	Right of Way Marker	161	Each
998E0100	Railroad Protective Insurance	Lump Sum	LS

* - Denotes Non-Participating

SECTION B ESTIMATE OF QUANTITIES

BID ITEM NUMBER	ITEM	QUANTITY	UNIT
004E0030	Maintenance of Traffic Diversion(s)	Lump Sum	LS
004E0050	Remove Traffic Diversion(s)	Lump Sum	LS
009E0010	Mobilization	Lump Sum	LS
009E3220	Reestablish Right-of-Way and Property Corner	152	Each
009E3225	Reestablish Public Land Survey System Corner	38	Each
009E3230	Grade Staking	16.423	Mile
009E3245	Final Cross Section Survey	16.423	Mile
009E3250	Miscellaneous Staking	16.423	Mile
009E3280	Slope Staking	16.423	Mile
009E3290	Structure Staking	4	Each
009E3301	Engineer Directed Surveying/Staking	40.0	Hour
100E0100	Clearing	Lump Sum	LS
110E0600	Remove Fence	47,665	Ft
110E0700	Remove 3 Cable Guardrail	344	Ft
110E0730	Remove Beam Guardrail	583.0	Ft
110E0740	Remove 3 Cable Guardrail Anchor Assembly	1	Each
110E0745	Remove 3 Cable Guardrail Slip Base Anchor Assembly	1	Each
110E1010	Remove Asphalt Concrete Pavement	4,164.8	SqYd
110E5451	Salvage Riprap	3,992.0	Ton
110E7500	Remove Pipe for Reset	58	Ft
110E7510	Remove Pipe End Section for Reset	38	Each
120E0010	Unclassified Excavation	512,648	CuYd
120E0500	Option Borrow Excavation	284,420	CuYd
120E1000	Muck Excavation	65,177	CuYd
120E2000	Undercutting	160,298	CuYd
120E6100	Water for Embankment	5,685.0	MGal
205E0010	Dust Control Chloride	683,280	Lb
250E0020	Incidental Work, Grading	Lump Sum	LS
260E6010	Granular Material	2,495.1	Ton
270E0040	Salvage and Stockpile Asphalt Mix and Granular Base Material	50,755.0	Ton
421E0100	Pipe Culvert Undercut	1,320	CuYd
450E0142	24" RCP Class 2, Furnish	1,098	Ft
450E0150	24" RCP, Install	1,098	Ft
450E0162	30" RCP Class 2, Furnish	920	Ft
450E0170	30" RCP, Install	920	Ft
450E0192	42" RCP Class 2, Furnish	172	Ft
450E0200	42" RCP, Install	172	Ft
450E0202	48" RCP Class 2, Furnish	240	Ft
450E0210	48" RCP, Install	240	Ft
450E0222	60" RCP Class 2, Furnish	96	Ft
450E0230	60" RCP, Install	96	Ft
450E2008	18" RCP Flared End, Furnish	3	Each

BID ITEM NUMBER	ITEM	QUANTITY	UNIT
450E2009	18" RCP Flared End, Install	3	Each
450E2016	24" RCP Flared End, Furnish	4	Each
450E2017	24" RCP Flared End, Install	4	Each
450E2032	42" RCP Flared End, Furnish	4	Each
450E2033	42" RCP Flared End, Install	4	Each
450E2036	48" RCP Flared End, Furnish	6	Each
450E2037	48" RCP Flared End, Install	6	Each
450E2044	60" RCP Flared End, Furnish	2	Each
450E2045	60" RCP Flared End, Install	2	Each
450E2200	24" RCP Sloped End, Furnish	24	Each
450E2201	24" RCP Sloped End, Install	24	Each
450E2204	30" RCP Sloped End, Furnish	18	Each
450E2205	30" RCP Sloped End, Install	18	Each
450E3012	24" RCP Arch Class 2, Furnish	64	Ft
450E3020	24" RCP Arch, Install	64	Ft
450E3022	30" RCP Arch Class 2, Furnish	196	Ft
450E3030	30" RCP Arch, Install	196	Ft
450E3032	36" RCP Arch Class 2, Furnish	246	Ft
450E3040	36" RCP Arch, Install	246	Ft
450E3042	42" RCP Arch Class 2, Furnish	188	Ft
450E3050	42" RCP Arch, Install	188	Ft
450E4512	36" RCP Arch Flared End, Furnish	7	Each
450E4513	36" RCP Arch Flared End, Install	7	Each
450E4516	42" RCP Arch Flared End, Furnish	6	Each
450E4517	42" RCP Arch Flared End, Install	6	Each
450E4600	24" RCP Arch Sloped End, Furnish	2	Each
450E4601	24" RCP Arch Sloped End, Install	2	Each
450E4604	30" RCP Arch Sloped End, Furnish	6	Each
450E4605	30" RCP Arch Sloped End, Install	6	Each
450E4759	18" CMP 16 Gauge, Furnish	2,298	Ft
450E4760	18" CMP, Install	2,298	Ft
450E4769	24" CMP 16 Gauge, Furnish	422	Ft
450E4770	24" CMP, Install	422	Ft
450E4779	30" CMP 16 Gauge, Furnish	602	Ft
450E4780	30" CMP, Install	602	Ft
450E4789	36" CMP 16 Gauge, Furnish	64	Ft
450E4790	36" CMP, Install	64	Ft
450E5318	36" CMP Sloped End, Furnish	1	Each
450E5319	36" CMP Sloped End, Install	1	Each
450E5406	18" CMP Safety End, Furnish	68	Each
450E5407	18" CMP Safety End, Install	68	Each
450E5410	24" CMP Safety End, Furnish	14	Each
450E5411	24" CMP Safety End, Install	14	Each

BID ITEM NUMBER	ITEM	QUANTITY	UNIT
450E5414	30" CMP Safety End, Furnish	20	Each
450E5417	30" CMP Safety End, Install	20	Each
450E5529	30" CMP Arch 16 Gauge, Furnish	122	Ft
450E5530	30" CMP Arch, Install	122	Ft
450E5599	84" CMP Arch 14 Gauge, Furnish	162	Ft
450E5600	84" CMP Arch, Install	162	Ft
450E5910	30" CMP Arch Sloped End, Furnish	4	Each
450E5911	30" CMP Arch Sloped End, Install	4	Each
450E6014	30" CMP Arch Safety End, Furnish	2	Each
450E6017	30" CMP Arch Safety End, Install	2	Each
450E8300	Culvert Joint Cleaning	47.0	Ft
450E8305	Repair Culvert Joint	47.0	Ft
450E8310	Chemical Grout Void Fill	57.1	Gal
* 450E8900	Cleanout Pipe Culvert	24	Each
450E9000	Reset Pipe	58	Ft
450E9001	Reset Pipe End Section	38	Each
451E0012	12" PVC Encasement Pipe	24	Ft
462E0100	Class M6 Concrete	17.4	CuYd
464E0100	Controlled Density Fill	262.9	CuYd
600E0300	Type III Field Laboratory	1	Each
620E0020	Type 2 Right-of-Way Fence	12,429	Ft
620E0030	Type 3 Right-of-Way Fence	9,580	Ft
620E0060	Type 6 Right-of-Way Fence	4,446	Ft
620E0515	Type 1A Temporary Fence	11,950	Ft
620E0520	Type 2 Temporary Fence	1,080	Ft
620E1020	2 Post Panel	39	Each
620E1030	3 Post Panel	64	Each
620E2016	16' Tubular Gate	2	Each
700E2010	Place Riprap	3,992.0	Ton
831E0110	Type B Drainage Fabric	13,073	SqYd
831E0300	Reinforcement Fabric (MSE)	8,750	SqYd
900E0010	Refurbish Single Mailbox	15	Each
900E1150	Right of Way Marker	161	Each
998E0100	Railroad Protective Insurance	Lump Sum	LS

* - Denotes Non-Participating

FENCE QUANTITIES

STATE OF SOUTH DAKOTA	PROJECT P-PH-B-PT 0010(124)296	SHEET B19	TOTAL SHEETS B120
-----------------------	-----------------------------------	--------------	----------------------

Plotting Date: 03/20/2024 Rev 3/20/2024 BT

Plot Scale - 1:200

Station to Station		L / R	Right-of-Way Fence					Temporary Fence		Gates							Remove Fence (Ft)	
			Type 2 (Ft)	Modified Type 2 (Ft)	Type 3 (Ft)	Modified Type 3 (Ft)	Type 6 (Ft)	Type 1A (Ft)	Type 2 (Ft)	2 Post Panel (Each)	3 Post Panel (Each)	N.A.B.I.						16' Tubular Gate (Each)
												Barbed & Woven Wire 40' (Each)	Barbed Wire 24' (Each)	Barbed Wire 30' (Each)	Barbed Wire 32' (Each)			
493+14	509+26	L																1612
519+95	545+90	L																2595
600+60	606+32	L					572		2									572
609+21	618+96	L					998		2	2			1					1001
678+88	691+73	L																1310
723+66	730+82	L			748			730	3	2								830
757+90	783+77	L		2634					1	6								2712
937+36	942+66	L	530						2									533
943+34	952+08	L				907				4								964
959+56	969+50	L				1026				4								1076
969+50	974+10	L	475						2									505
976+12	995+31	L				1935			1	3								1966
1024+76	1030+44	L																597
1129+18	1140+52	L	1149						3	4					1			1149
1155+43	1169+54	L			1448		1320		1	4								1496
1174+00	1181+69	L			804		770			4			1					855
1215+78	1222+98	L			761		840		5	2					1			1072
1234+60	1255+98	L	2154				2140		1	2					1			2175
1255+98	1260+44	L			763		720		3	3			1					814
465+13	465+76	R	94						2	2								124
484+78	508+85	R																2427
628+10	677+85	R																4977
863+86	876+95	R	1308						1	2								1323
928+80	942+39	R																1359
969+42	995+62	R																2620
996+25	1022+12	R																2587
1031+33	1040+74	R				941			2	2		1						941
1140+14	1154+76	R	1467						3	3					1			1434
1155+49	1181+46	R	2618						1	5					1			2616
1216+16	1216+40	R																92
1218+65	1229+57	R			1165			1080	1	3								1226
1268+35	1287+60	R			1958		1930		3	7			1				2	2105
995+91 (Option Borrow Pit)		L					3500											
TOTALS:			9795	2634	7647	1933	4446	11950	1080	39	64		1	3	1	5	2	47665

Post Type and Sequence:
 Right of way fence will be constructed using alternate wood and steel post except as noted

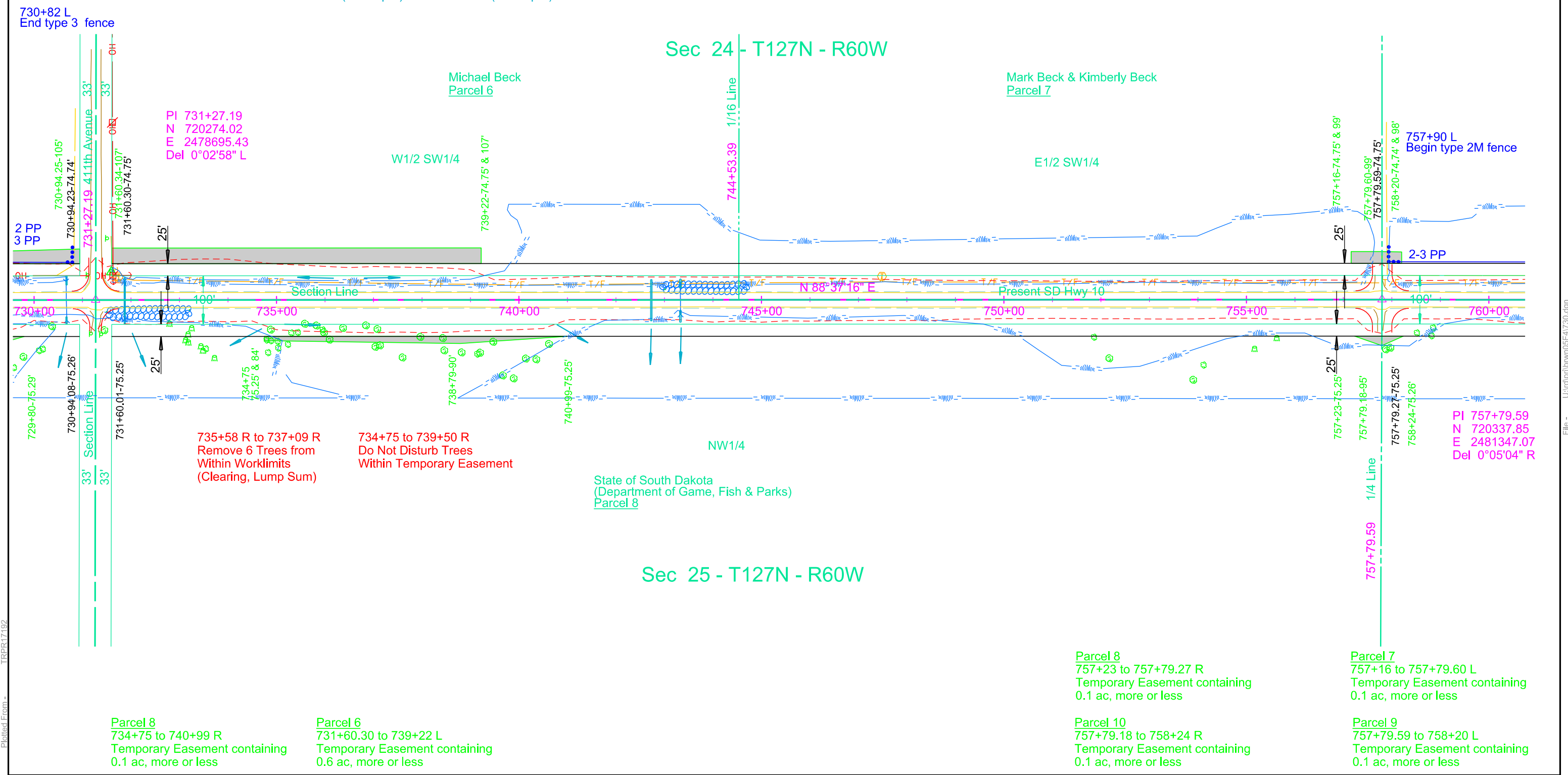
Modified Type 2 (Type 2M) and modified Type 3 (Type 3M) fence will be constructed using all wood posts.

Plotted From - TRPR17192

File - ...:\rd\p\borrn05\F4\table\Fence.dgn



730+67 Retain 24" RCP	731+87 Take Out 18"- 80' RCP (Incidental Work, Grading)	743+33 Retain 30" RCP
730+67 Clean Out 24" RCP	731+87 (6 ac) Install 24" - 80' RCP & 2 Sloped Ends	742+73 (347 ac w/ pipe at 743+33) Install 30" - 68' RCP & 2 Sloped Ends
730+67 Remove and Reset 2- 24" RCP End Sections	731+51 to 733+20 R Salvage Riprap (160.0 Tons)	743+33 Remove and Reset 2- 30" RCP End Sections
730+67 (23 ac) Install 24" - 20' RCP (12' L & 8' R)	731+70 to 733+40 R Place Riprap (160.0 Tons) and Type B Drainage Fabric (237 SqYd)	743+33 (347 ac w/pipe at 742+73) Install 30" - 26' RCP (10' L & 16' R)



PI 731+27.19
N 720274.02
E 2478695.43
Del 0°02'58" L

PI 757+79.59
N 720337.85
E 2481347.07
Del 0°05'04" R

735+58 R to 737+09 R
Remove 6 Trees from
Within Worklimits
(Clearing, Lump Sum)

734+75 to 739+50 R
Do Not Disturb Trees
Within Temporary Easement

State of South Dakota
(Department of Game, Fish & Parks)
Parcel 8

Parcel 8
734+75 to 740+99 R
Temporary Easement containing
0.1 ac, more or less

Parcel 6
731+60.30 to 739+22 L
Temporary Easement containing
0.6 ac, more or less

Parcel 8
757+23 to 757+79.27 R
Temporary Easement containing
0.1 ac, more or less

Parcel 10
757+79.18 to 758+24 R
Temporary Easement containing
0.1 ac, more or less

Parcel 7
757+16 to 757+79.60 L
Temporary Easement containing
0.1 ac, more or less

Parcel 9
757+79.59 to 758+20 L
Temporary Easement containing
0.1 ac, more or less

Plot Scale - 1:200

Plotted From - TRPR17192

File - U:\trproj\jbnw\05F4730.dgn

STATE OF SOUTH DAKOTA	PROJECT	SHEET	TOTAL SHEETS
	P-PH-B-PT 0010(124)296	B55	B120

Plotting Date: 03/20/2024 Rev 3/20/2024 BT

765+33
Retain 30" RCP

765+33
Clean Out 30" RCP

765+33
Remove and Reset 2-30" RCP
End Sections

765+33 (218 ac w/ pipe at 765+83)
Install 30" - 28' RCP
(14' L & 14' R)

765+83 (218 ac w/ pipe at 765+33)
Install 30" - 76' RCP
& 2 Sloped Ends

777+27 to 778+94 R
Salvage Riprap
(70.0 Tons)

777+90 to 778+70 R
Place Riprap (70.0 Tons)
and Type B Drainage
Fabric (114 SqYd)

778+33
Retain 30" RCP

778+33
Clean Out 30" RCP

778+33
Remove and Reset 2-30" RCP
End Sections

778+33 (26 ac)
Install 30" - 30' RCP
(14' L & 16' R)

787+11 to 794+03 R
Salvage Riprap
(360.0 Tons)

788+40 to 792+60 R
Place Riprap (360.0 Tons)
and Type B Drainage
Fabric (577 SqYd)



Sec 24 - T127N - R60W

Sec 19 - T127N - R59W

Mark Beck & Kimberly Beck
Parcel 9

Michael Beck
Parcel 11

SE1/4

Government Lot 4

Type 2M fence

Section Line

Present SD Hwy 10

Government Lot 1

NE1/4

State of South Dakota
(Department of Game, Fish & Parks)
Parcel 10

PI 784+06.80
N 720397.20
E 2483973.61
Del 0°08'53" R

Marvin and Doris Beck Family Trust
Parcel 12

Sec 25 - T127N - R60W

Sec 30 - T127N - R59W

BROWN COUNTY
MARSHALL COUNTY

Plot Scale - 1:200

Plotted From - TRPR17192

File - U:\trp\proj\brwn05FA760.dgn

Plot Scale - 1:200

Plotted From - TRPR17192

File - U:\trproj\jbnw\05\F4\940.dgn

STATE OF SOUTH DAKOTA	PROJECT	SHEET	TOTAL SHEETS
	P-PH-B-PT 0010(124)296	B67	B120
Plotting Date: 03/20/2024		Rev 3/20/2024 BT	

943+03-45' L
Take Out 18" - 60' RCP
(Incidental Work, Grading)

955+46 to 957+30 L
Remove 4 Trees
(Clearing, Lump Sum)

957+82-38' L
Take Out 18"-57' RCP
(Incidental Work, Grading)

968+04
Retain 24" RCP

943+02-54' L (12 ac)
Install 24" - 66' CMP
& 2 Safety Ends

957+79-49' L (1 ac)
Install 18" - 60' CMP
& 2 Safety Ends

965+27-50' R (6 ac)
Install 18" - 58' CMP
& 2 Safety Ends

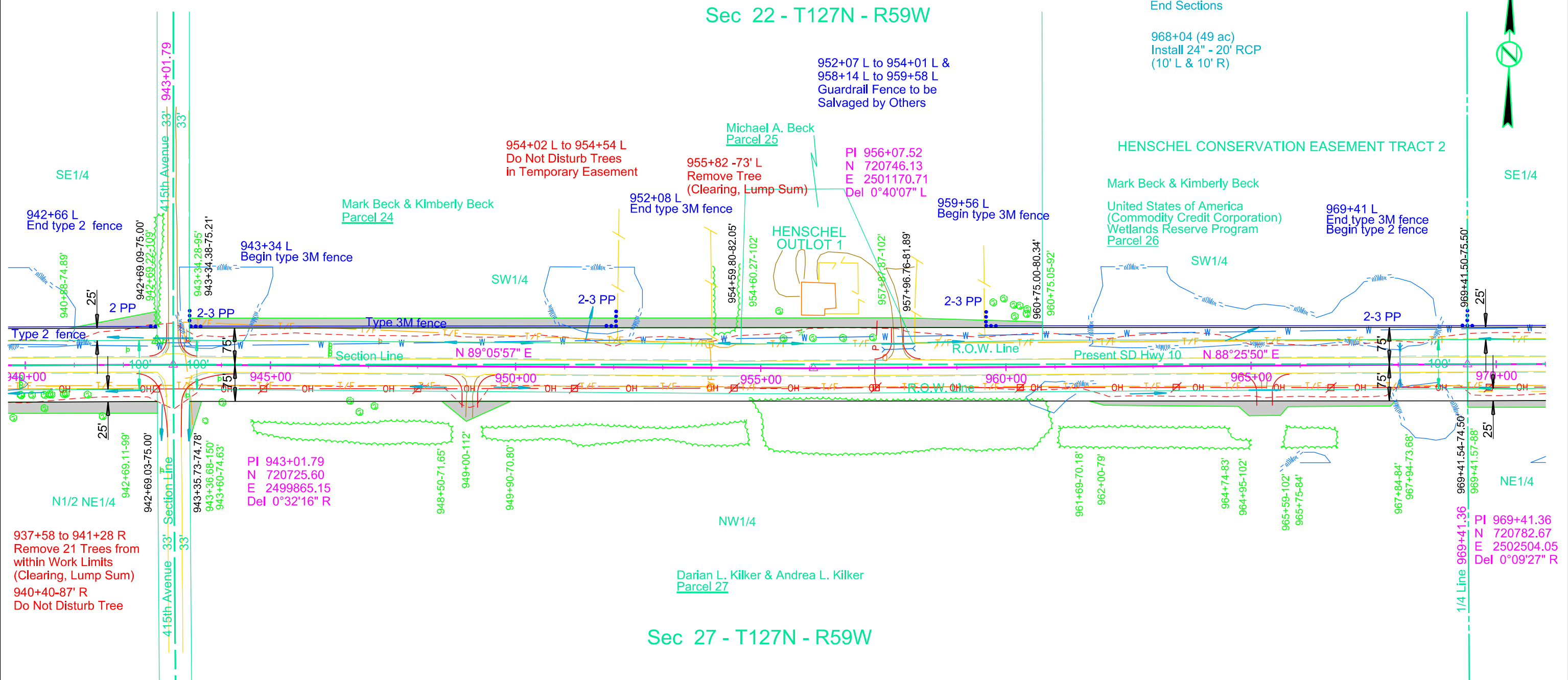
968+04
Clean Out 24" RCP

957+53-21' L
Refurbish single mailbox and
construct mailbox turnout

968+04
Remove and Reset 2- 24" RCP
End Sections

968+04 (49 ac)
Install 24" - 20' RCP
(10' L & 10' R)

Sec 22 - T127N - R59W



937+58 to 941+28 R
Remove 21 Trees from
within Work Limits
(Clearing, Lump Sum)
940+40-87' R
Do Not Disturb Tree

Parcel 22
940+88 to 942+69.22 L
Temporary Easement containing
0.1 ac, more or less

Parcel 24
943+34.28 to 954+60.27 L
Temporary Easement containing
0.5 ac, more or less

Parcel 27
943+35.73 to 943+60 R
Temporary Easement containing
0.1 ac, more or less

Parcel 25
954+59.80 to 957+96.76 L
Temporary Easement containing
0.2 ac, more or less

Parcel 27
948+50 to 949+90 R
Temporary Easement containing
0.1 ac, more or less

Parcel 24
957+87.87 to 960+75.05 L
Temporary Easement containing
0.1 ac, more or less

Parcel 27
961+69 to 967+94 R
Temporary Easement containing
0.2 ac, more or less

954+02 L to 954+54 L
Do Not Disturb Trees
in Temporary Easement

955+82 -73' L
Remove Tree
(Clearing, Lump Sum)

952+07 L to 954+01 L &
958+14 L to 959+58 L
Guardrail Fence to be
Salvaged by Others

Michael A. Beck
Parcel 25

PI 956+07.52
N 720746.13
E 2501170.71
Del 0°40'07" L

HENSCHEL CONSERVATION EASEMENT TRACT 2

Mark Beck & Kimberly Beck
United States of America
(Commodity Credit Corporation)
Wetlands Reserve Program
Parcel 26

969+41 L
End type 3M fence
Begin type 2 fence

Darian L. Kilker & Andrea L. Kilker
Parcel 27

Sec 27 - T127N - R59W

PI 969+41.36
N 720782.67
E 2502504.05
Del 0°09'27" R

STATE OF SOUTH DAKOTA	PROJECT	SHEET	TOTAL SHEETS
	P-PH-B-PT 0010(124)296	B73	B120

Plotting Date: 03/13/2024 Rev 3/13/2024BT



1032+27
Take Out 18" - 78' RCP
(Incidental Work, Grading)

1032+27 (21 ac)
Install 24" - 84' RCP
& 2 Sloped Ends

1042+75 L to 1046+30 L
Remove Trees Within
Worklimits
(Clearing, Lump Sum)

1046+39 - 38' R
Take Out 24"-62' RCP
(Incidental Work, Grading)

1048+75-105' R
Retain 18" CMP

1049+28
Retain 12" PVC Pipe

1046+94 - 47' L
Take Out 18" - 64' RCP
(Incidental Work, Grading)

1048+77 - 39' R
Take Out 24"-65' RCP
(Incidental Work, Grading)

1051+32
Take Out 3' x3' - 42' RCBC
(Incidental Work, Grading)

Remove Trees at the
following locations:
1048+27-55' L
1048+35-55' L
(Clearing, Lump Sum)

1046+78-26' L
Refurbish single mailbox and
construct mailbox turnout

1046+88-52' L (1 ac)
Install 18" - 64' CMP
& 2 Safety Ends

1048+77-51' R (24 ac)
Install 30" - 62' CMP Arch
& 2 Safety Ends

1049+36-66' R to 1049+39-90' R
Install 12" - 24' PVC Pipe

1046+32-53' R (16 ac)
Install 24" - 64' CMP
& 2 Safety Ends

1051+32 (32 ac)
Install Twin 30" - 70' RCP
with Controlled Density Fill
(Spaced 4.1' C to C)
& 4 Sloped Ends

Sec 24 - T127N - R59W

Sec 23 - T127N - R59W

Sec 26 - T127N - R59W

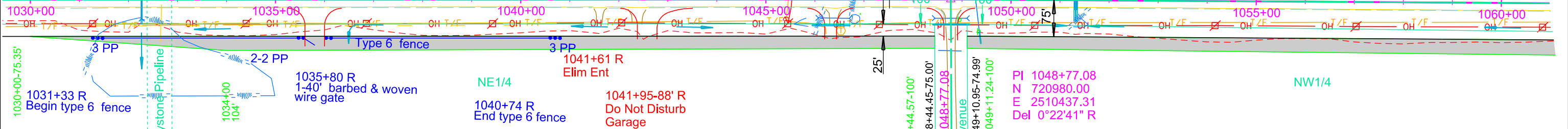
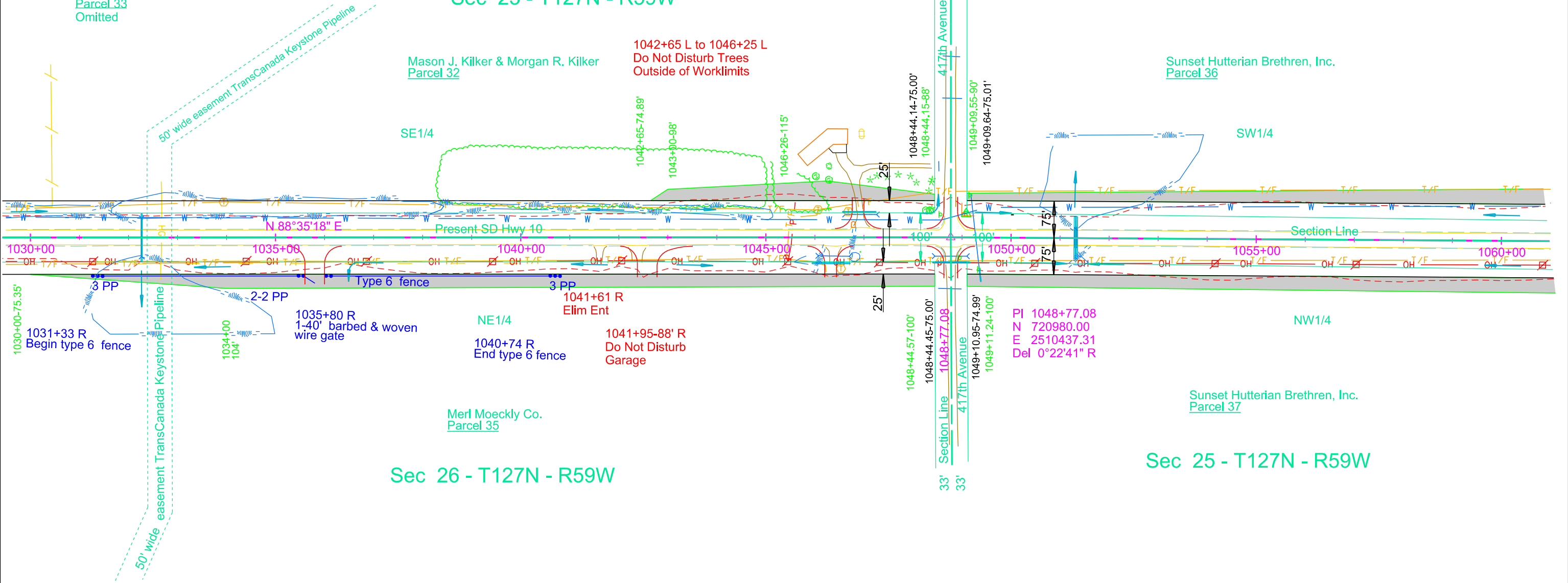
Sec 25 - T127N - R59W

Darian L. Kilker and Andrea L. Kilker
Parcel 33
Omitted

Mason J. Kilker & Morgan R. Kilker
Parcel 32

1042+65 L to 1046+25 L
Do Not Disturb Trees
Outside of Worklimits

Sunset Hutterian Brethren, Inc.
Parcel 36



PI 1048+77.08
N 720980.00
E 2510437.31
Del 0°22'41" R

Parcel 32
1042+65 to 1048+44.15 L
Temporary Easement containing
0.4 ac, more or less

Parcel 35
1030+00 to 1048+44.57 R
Temporary Easement containing
1.0 ac, more or less

Plot Scale - 1:200

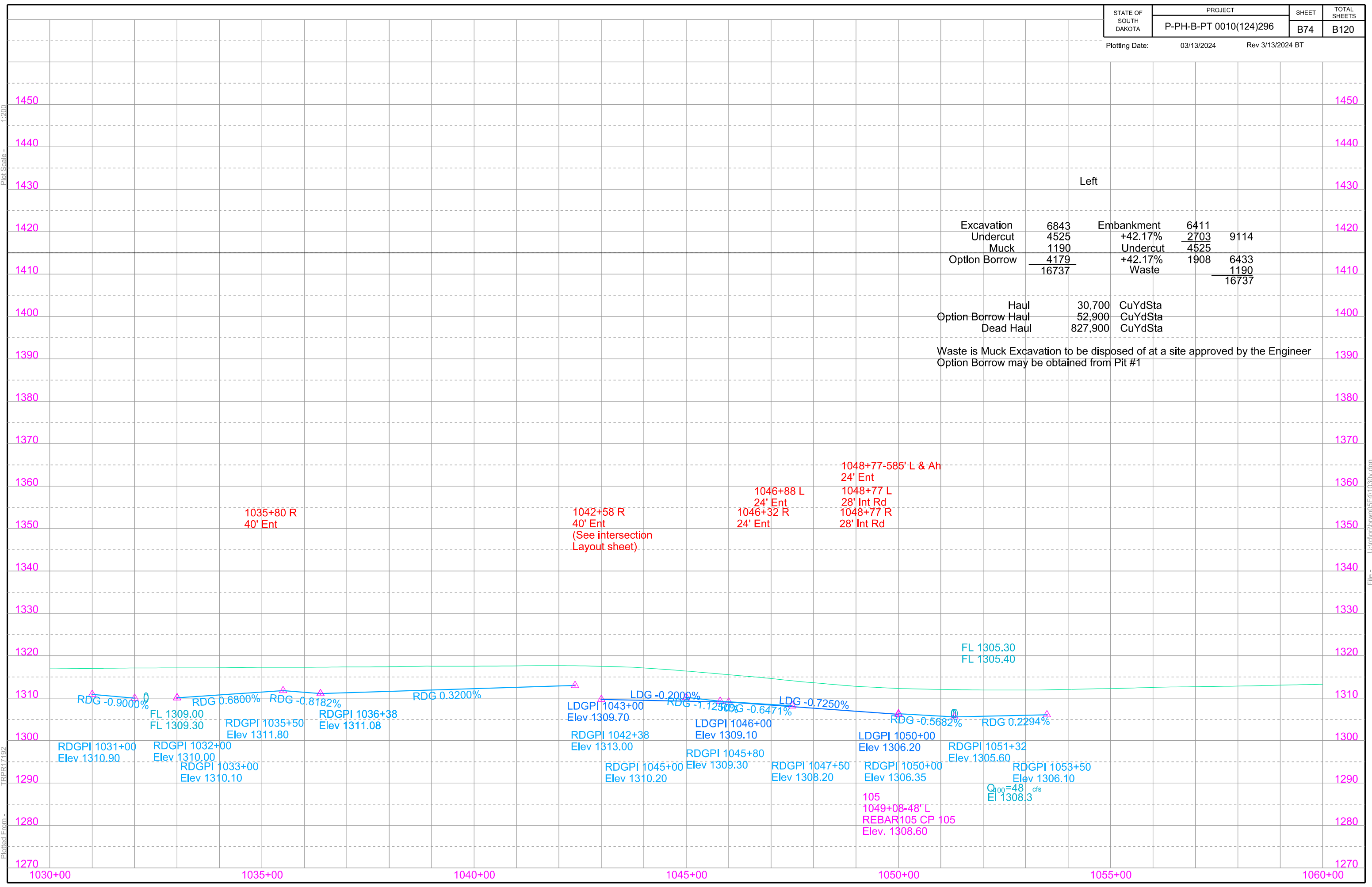
Plotted From - TRPR17192

File - U:\trp\j\m\m5\F\1030.dgn

Plot Scale - 1:200

Plotted From - TRPR17192

File - U:\trproj\brwn05\F-A11030v.dgn





1210+04 - 40' L
Take Out 18" - 52' RCP
(Incidental Work, Grading)

1210+68-44' L (1 ac)
Install 18" - 46' CMP
& 2 Safety Ends

1210+20 L to 1215+68 L
Remove 11 Trees from
within Work Limits
(Clearing, Lump Sum)

1211+ 38 R to 1216+28 R
Remove Trees within
Work Limits
(Clearing, Lump Sum)

1217+01
Take Out 7'x3'- 42' RCBC
(Incidental Work, Grading)

1217+01 (2.71 sq mi)
Alternate A
Install 10'x5'x102'-2 7/16"
Cast-in-Place RCBC
Alternate B
Install 11'x5'x100'-0"
Pre-Cast RCBC
(See Section E)

1222+83 - 39' L
Take Out 18"- 56' RCP
(Incidental Work, Grading)

1222+79-51' L (6 ac)
Install 18" - 72' CMP
& 2 Safety Ends

1223+01 L to 1234+51 L
Remove Trees within
Work Limits
(Clearing, Lump Sum)

1229+55 R to 1234+56 R
Remove Trees within
Work Limits
(Clearing, Lump Sum)

1230+13-51' R (75 ac)
Install Twin 30" - 52' CMP
with Controlled Density Fill
(Spaced 4.0' C to C)
& 4 Safety Ends

1230+09 - 35' R
Take Out Twin 24"- 48' CMP
(Incidental Work, Grading)

1232+16 - 37' R
Take Out Twin 24"- 57' RCP
(Incidental Work, Grading)

1232+21-51' R (73 ac)
Install Twin 30" - 52' CMP
with Controlled Density Fill
(Spaced 4.0' C to C)
& 4 Safety Ends

1234+81-51' L (3 ac)
Install 18" - 72' CMP
& 2 Safety Ends

1234+78-51' R (73 ac)
Install Twin 30" - 52' CMP
with Controlled Density Fill
(Spaced 4.0' C to C)
& 4 Safety Ends

1234+76 - 42' L
Take Out 18" -54' RCP
(Incidental Work, Grading)

1234+78 - 36' R
Take Out Twin 24" - 60' RCP
(Incidental Work, Grading)

1213+64-21' L
Refurbish single mailbox and
construct mailbox turnout

1232+34-56' R
Refurbish single mailbox

1210+77 L to 1213+76 L
Do Not Disturb Trees
outside Work Limits

1208+68 L to 1209+85 L
Do Not Disturb Shrubs

Kurt L. Zuehlke
Parcel A22

div1217
PI 4+01.71
N 721303.87
E 2527260.92
Del 55°11'20" L
Dc 14°19'26"
T 209.07'
L 385.29'
R 400.00'

1214+59 L to 1215+86 L
Guardrail Fence to be
Salvaged by Others

Sec 21 - T127N - R58W

Karen R. Zuehlke, Darin G. Zuehlke,
Kurt L. Zuehlke & Brian C. Zuehlke
Parcel 51

Gary L. Zuehlke Family Trust
Parcel 54

1210+06 L
Elim Ent

1212+65-63' L to
1213+75-50' L
Do Not Disturb
Driveway

25' access easement

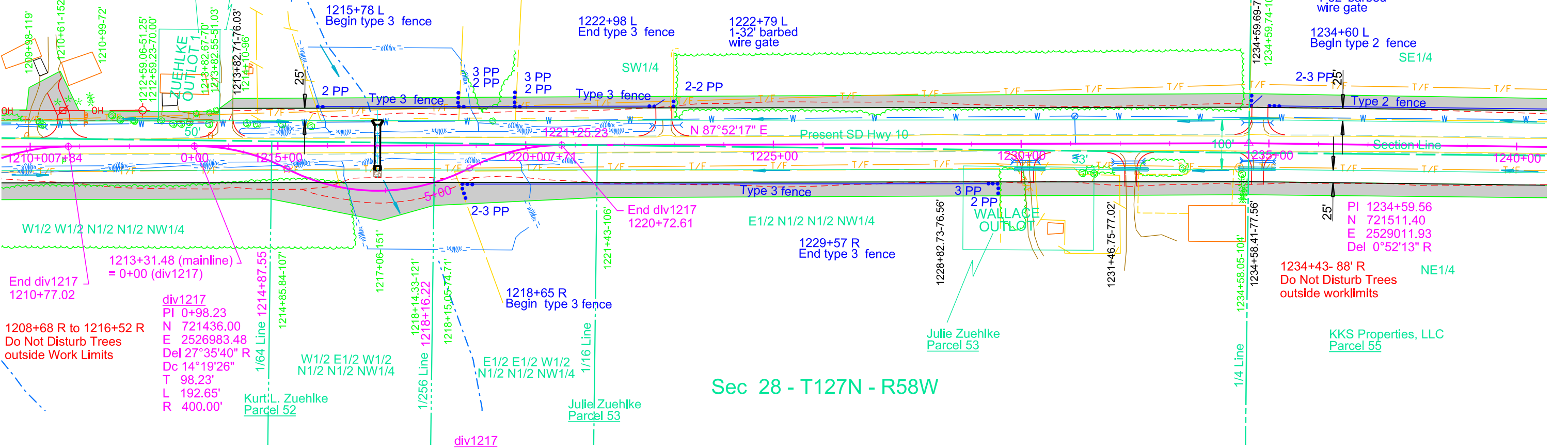
1215+78 L
Begin type 3 fence

1222+98 L
End type 3 fence

1222+79 L
1-32' barbed
wire gate

1234+78 L
1-32' barbed
wire gate

1234+60 L
Begin type 2 fence
SE 1/4



1210+007+84
End div1217
1210+77.02

1213+31.48 (mainline)
= 0+00 (div1217)

div1217
PI 0+98.23
N 721436.00
E 2526983.48
Del 27°35'40" R
Dc 14°19'26"
T 98.23'
L 192.65'
R 400.00'

1208+68 R to 1216+52 R
Do Not Disturb Trees
outside Work Limits

Kurt L. Zuehlke
Parcel 52

W1/2 E1/2 W1/2
N1/2 N1/2 NW1/4

1218+65 R
Begin type 3 fence

Julie Zuehlke
Parcel 53

Sec 28 - T127N - R58W

Julie Zuehlke
Parcel 53

PI 1234+59.56
N 721511.40
E 2529011.93
Del 0°52'13" R

1234+43- 88' R
Do Not Disturb Trees
outside worklimits
NE 1/4

KKS Properties, LLC
Parcel 55

div1217
PI 6+76.17
N 721456.23
E 2527527.79
Del 27°35'40" R
Dc 14°19'26"
T 98.23'
L 192.65'
R 400.00'

Parcel 51
1208+64 to 1212+59.23 L
Temporary Easement containing
0.3 ac, more or less

Parcel A22
1212+59.06 to 1213+82.67 L
Temporary Easement containing
0.1 ac, more or less

Parcel 52
1208+61.44 to 1218+15.05 R
Temporary Easement containing
0.9 ac, more or less

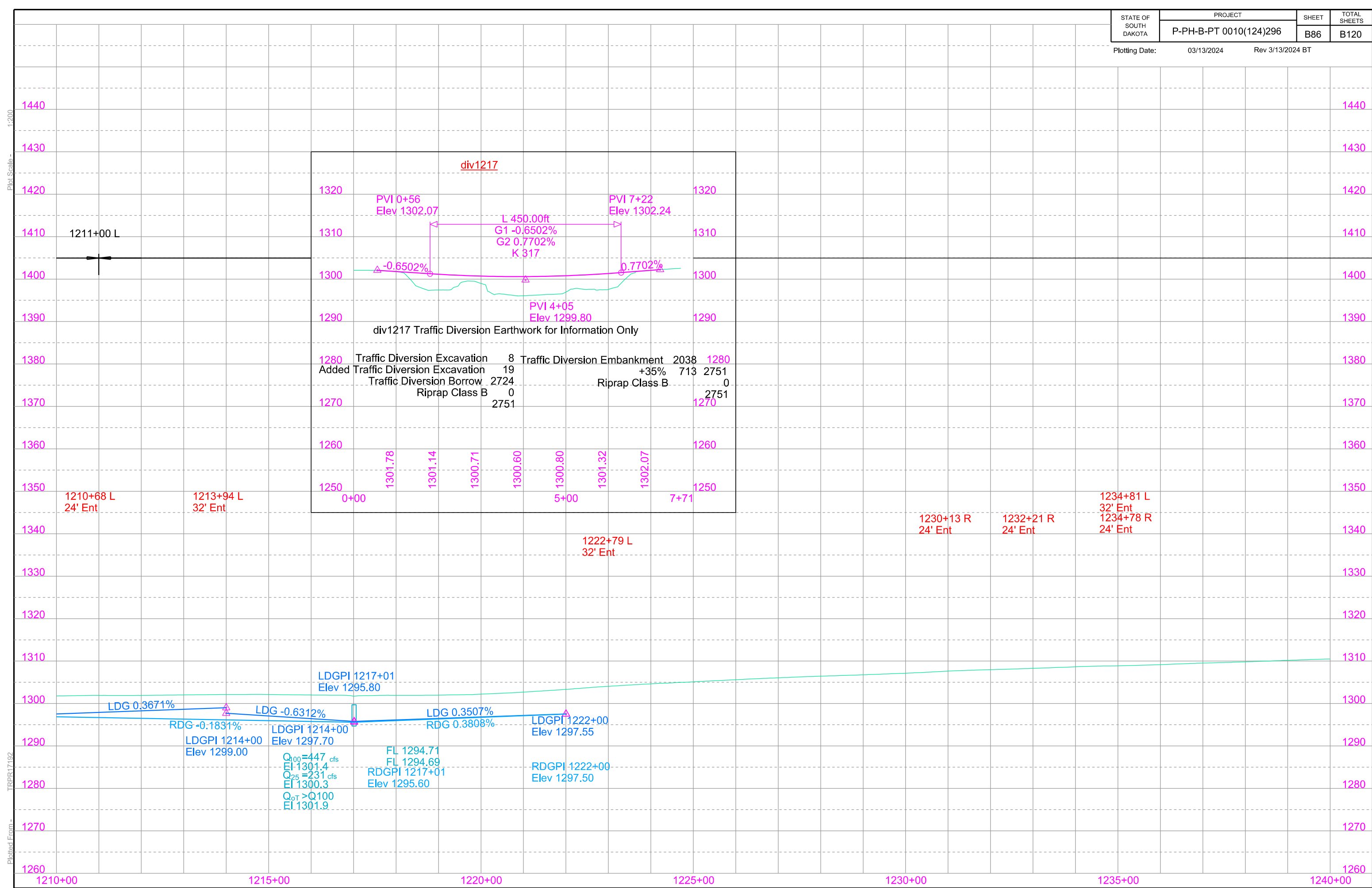
Parcel 51
1213+82.71 to 1234+59.74 L
Temporary Easement containing
1.2 ac, more or less

Parcel 53
1218+14.33 to 1234+58.41 R
Temporary Easement containing
1.2 ac, more or less

Plot Scale - 1:200

Plotted From - TRPR317192

File - U:\trp\proj\bnwn\05\F11210v.dgn

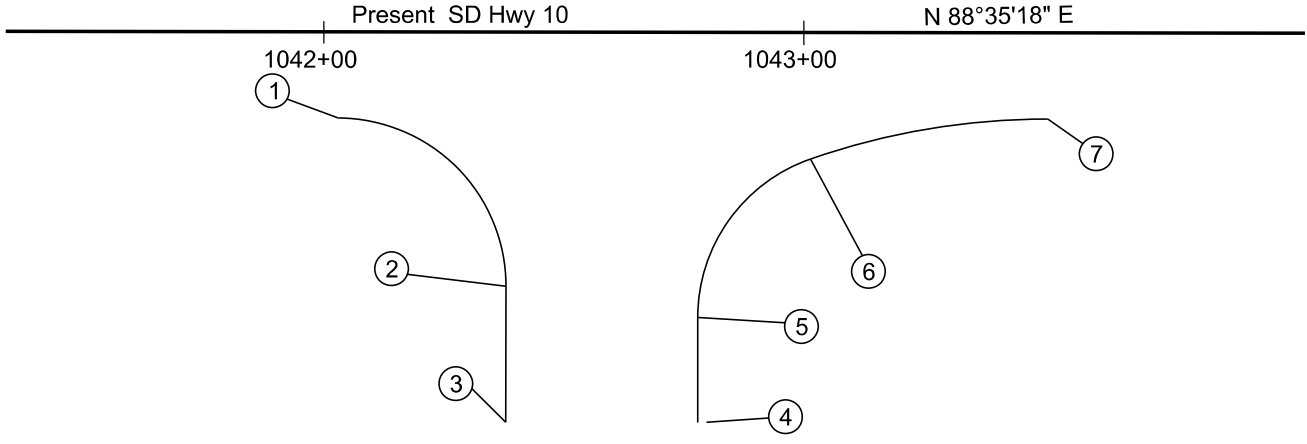


INTERSECTION LAYOUT

STATE OF SOUTH DAKOTA	PROJECT	SHEET	TOTAL SHEETS
	P-PH-B-PT 0010(124)296	B98	B120

Plotting Date: 03/13/2024 Rev 3/13/2024 BT

Note: Points are outer shoulder limits



- 1 1042+03.00- 18.00' R
Begin 35' Rad Shoulder
- 2 1042+38.00-53.00' R
End 35' Rad Shoulder
Begin Str Shoulder
- 3 1042+38.00-81.36' R
End Str Shoulder

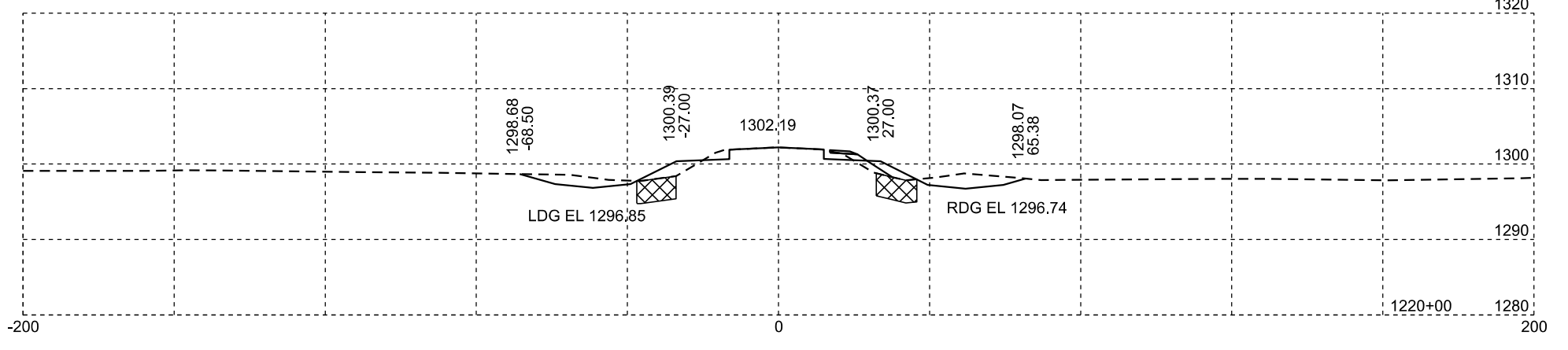
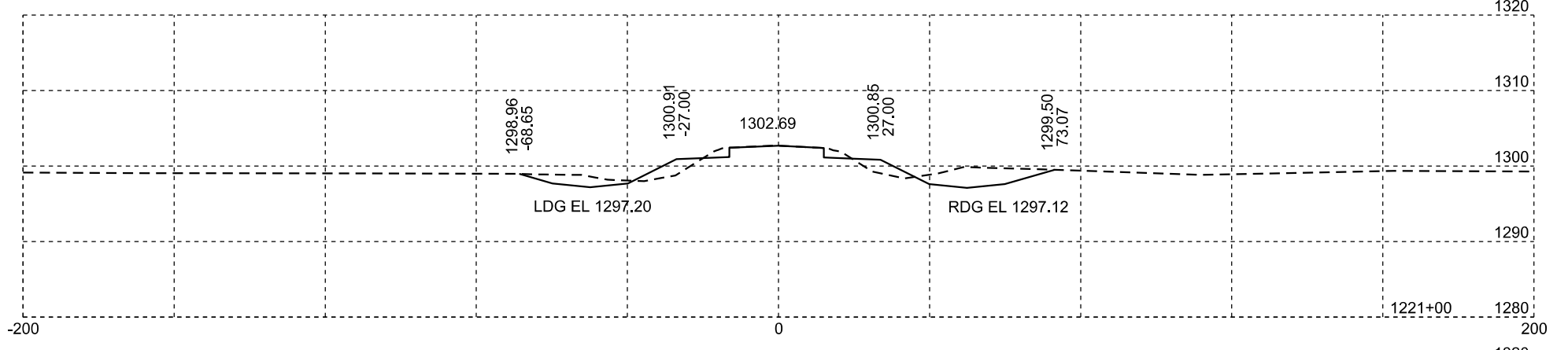
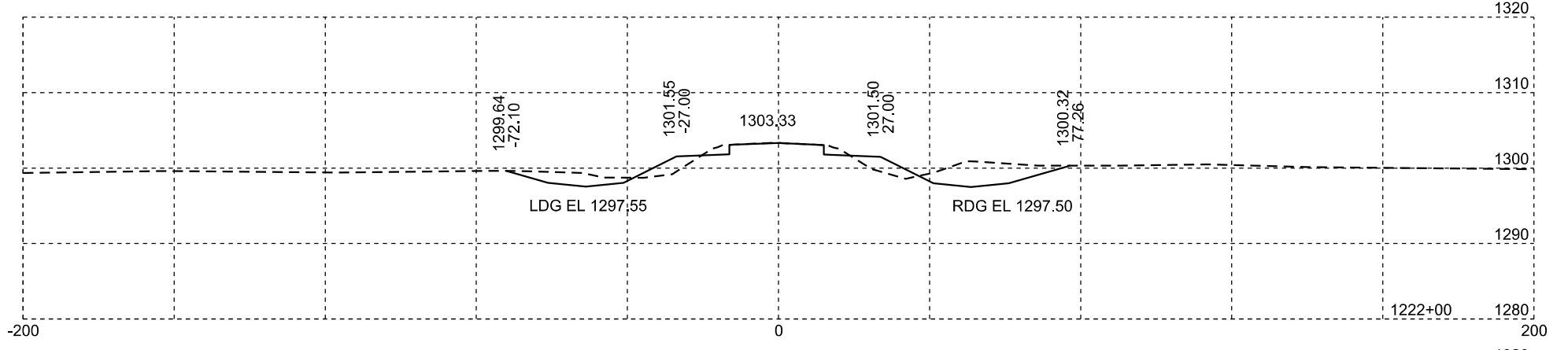
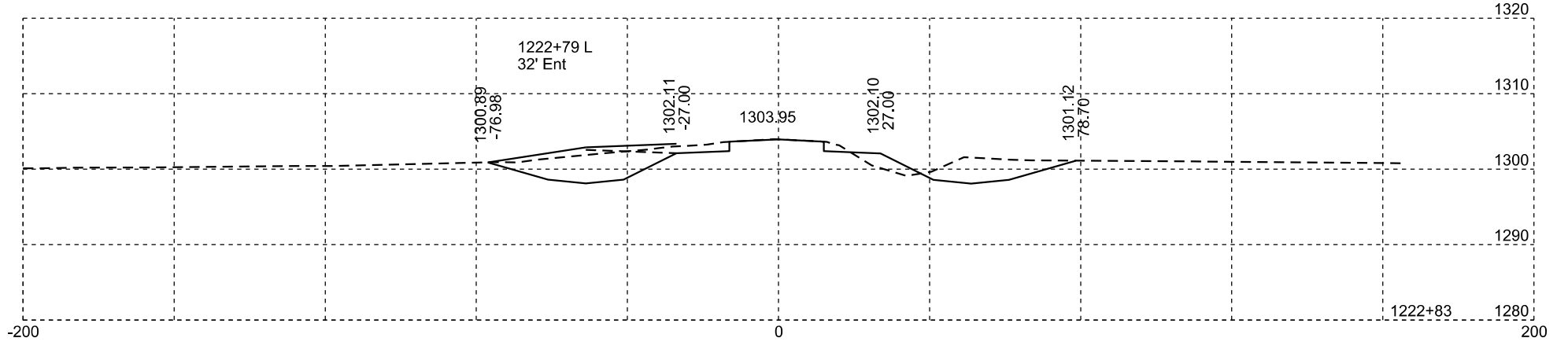
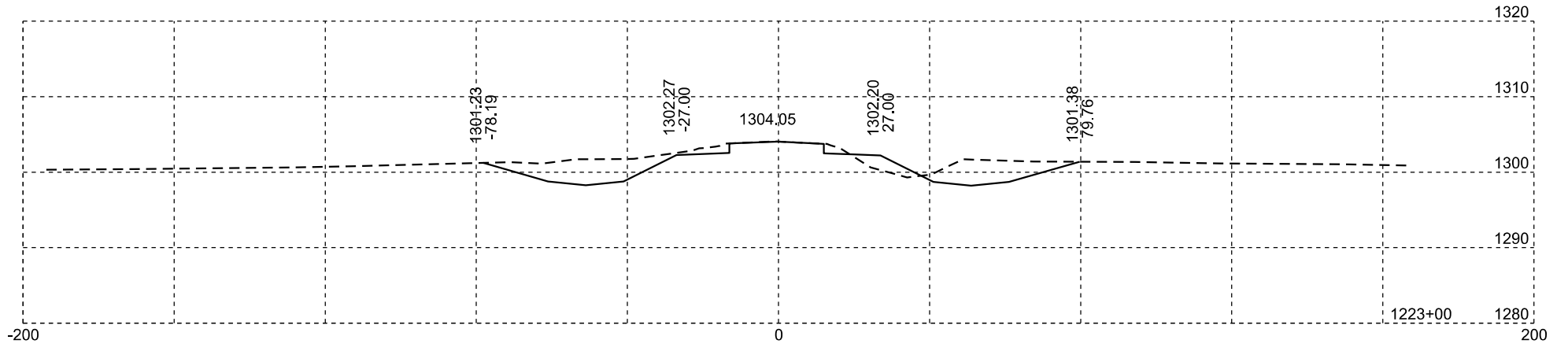
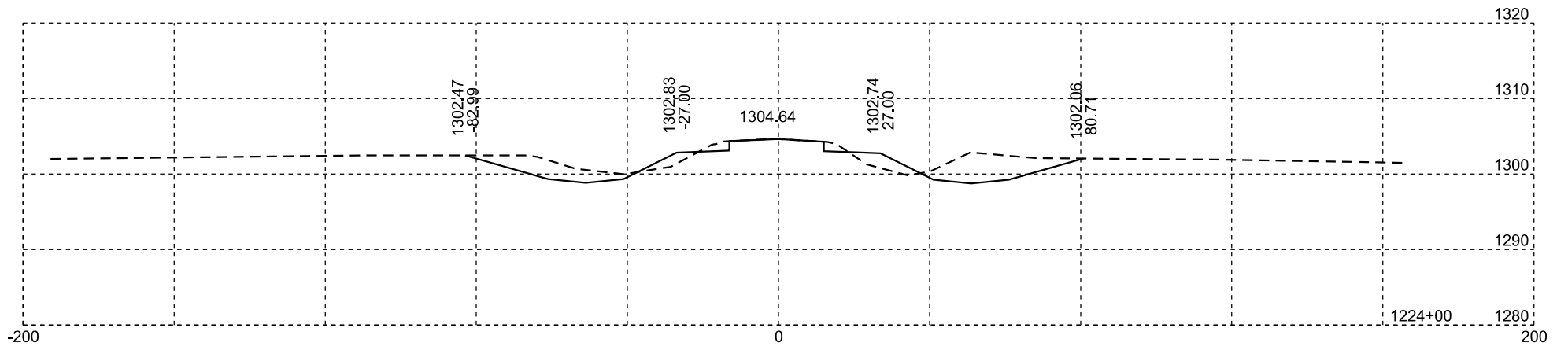
- 4 1042+78.00- 81.36' R
Begin Str Shoulder
- 5 1042+78.00-59.42' R
End Str Shoulder
Begin 35' Rad Shoulder
- 6 1043+01.46-26.38' R
End 35' Rad Shoulder
Begin 150' Rad Shoulder
- 7 1043+50.89-18.00' R
End 150' Rad Shoulder

Plot Scale - 1:40

TRPR17192

Plotted From -

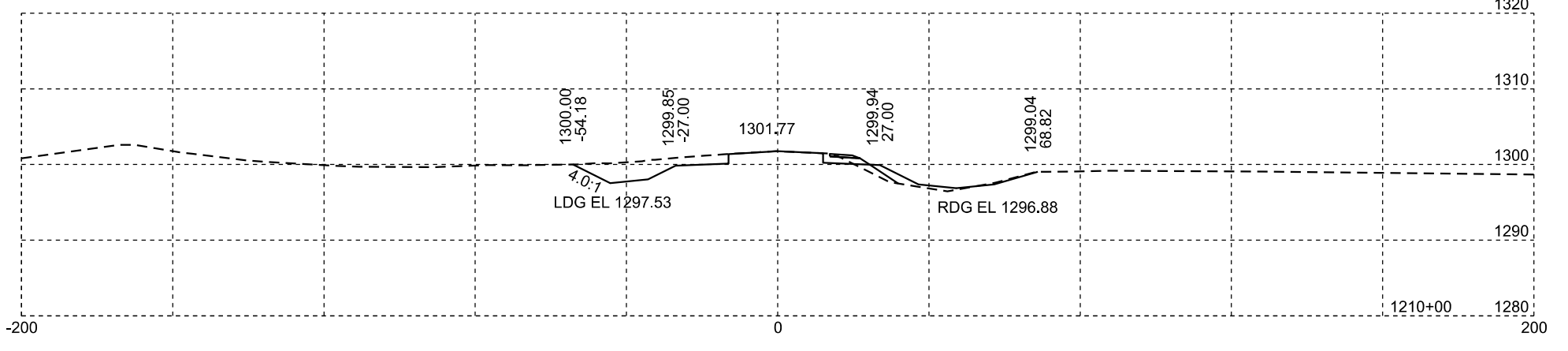
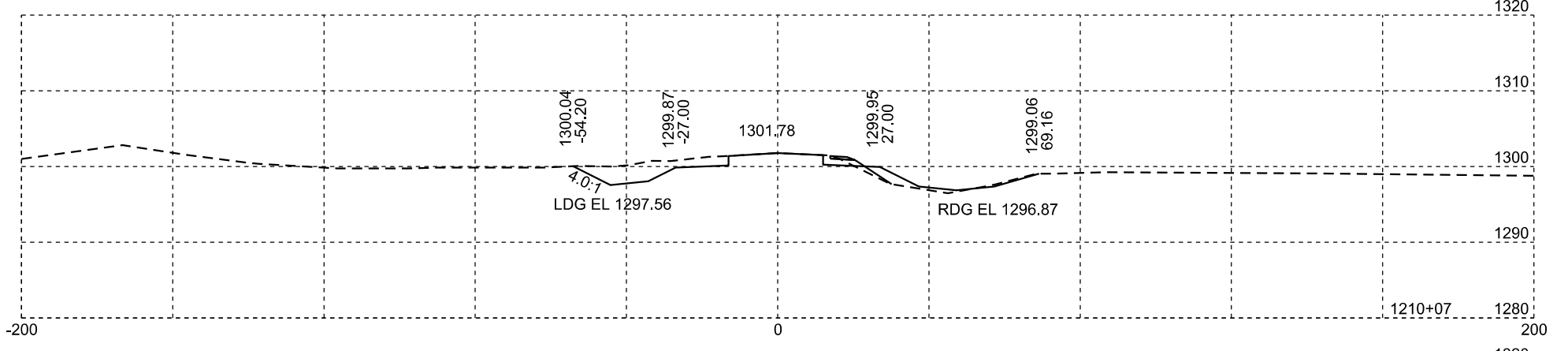
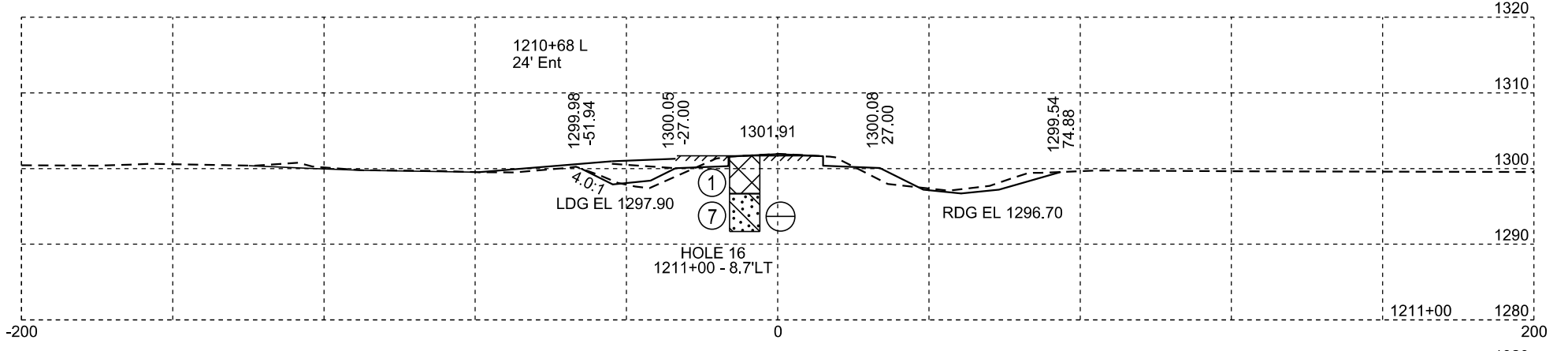
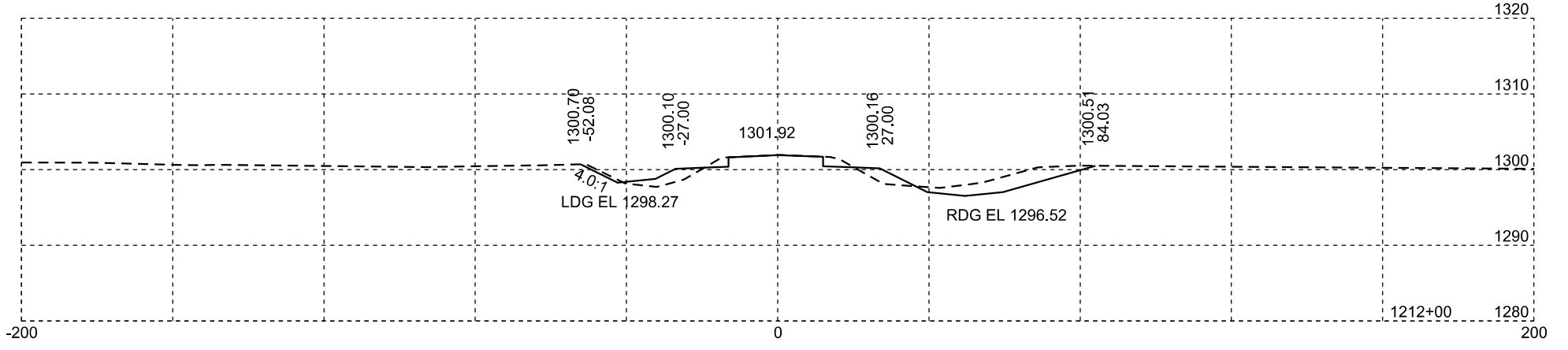
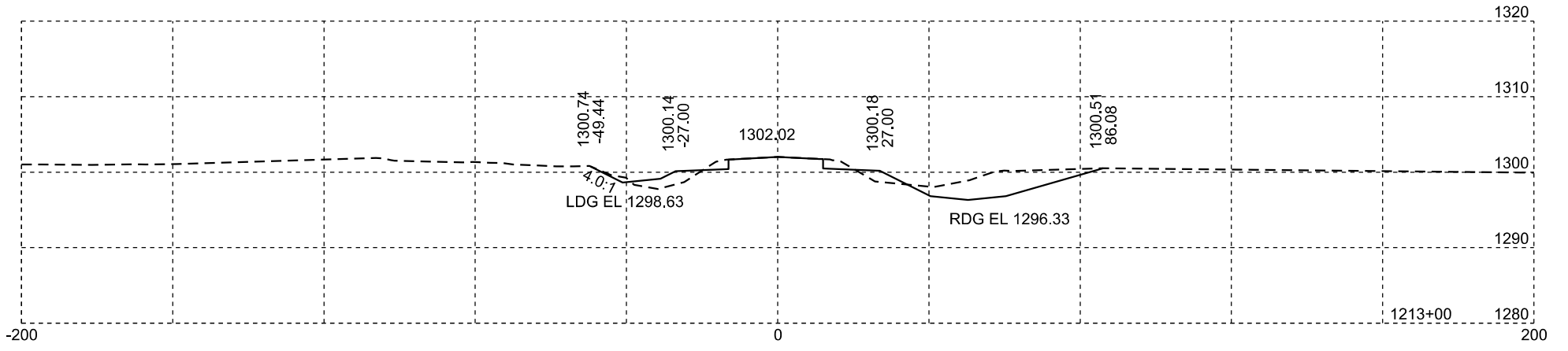
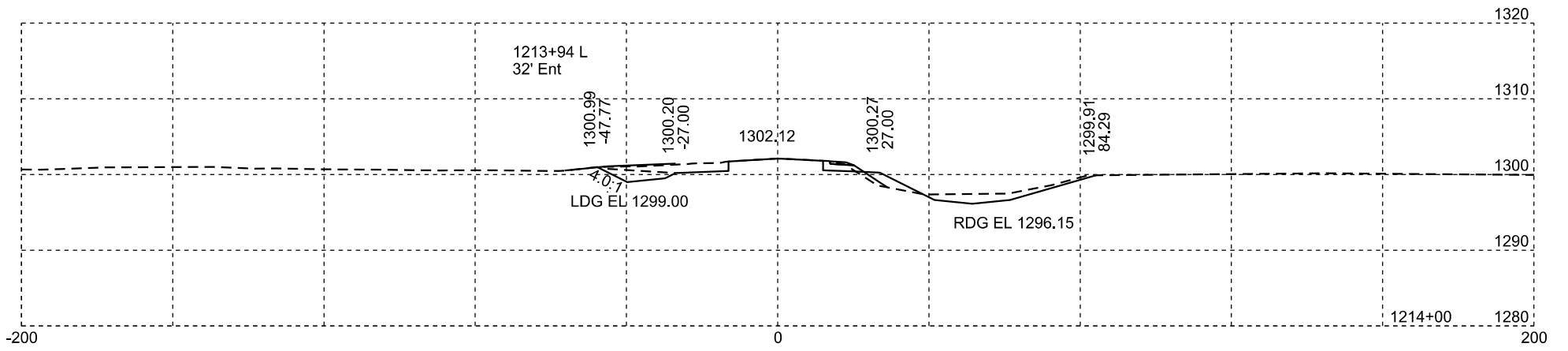
File - ...lbwn05F4\1042\intersection.dgn



⊠ Muck

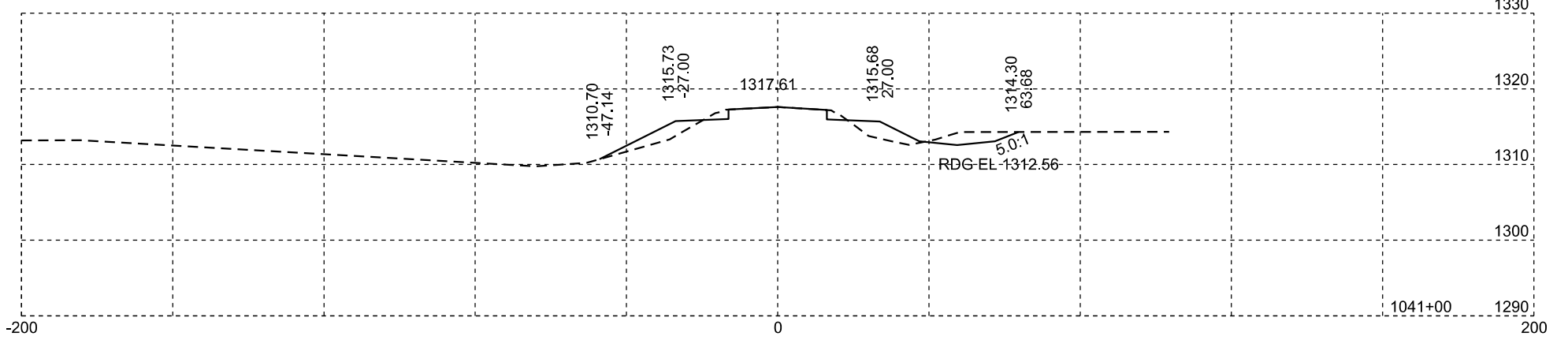
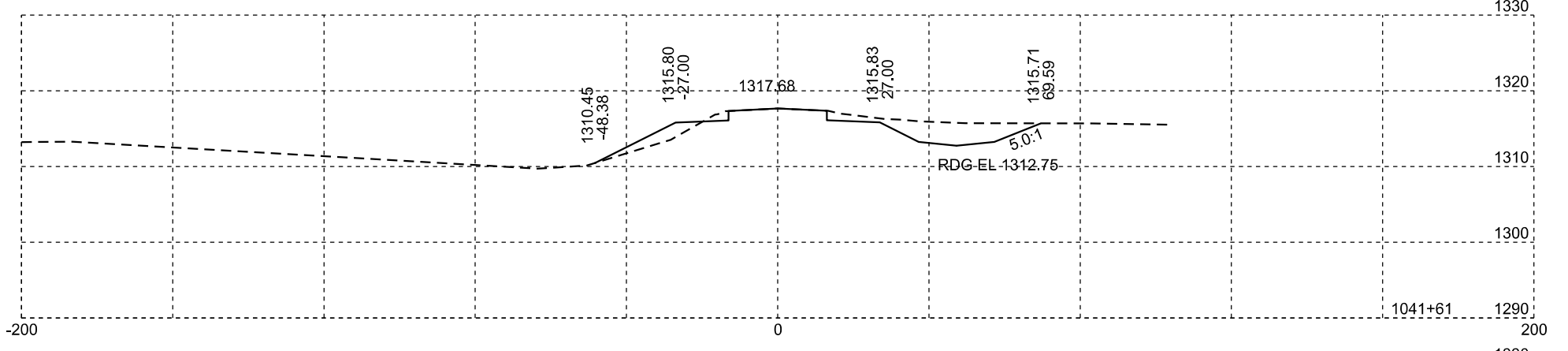
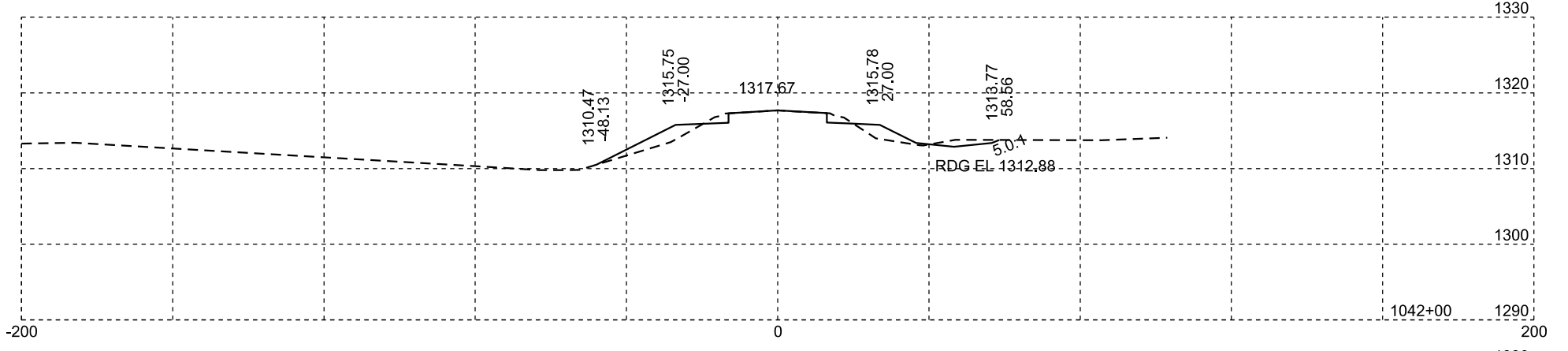
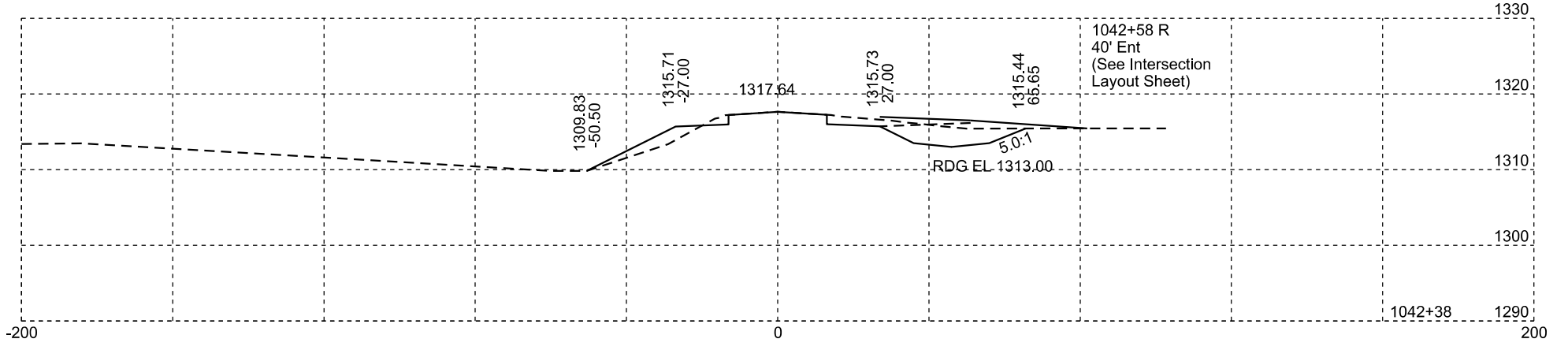
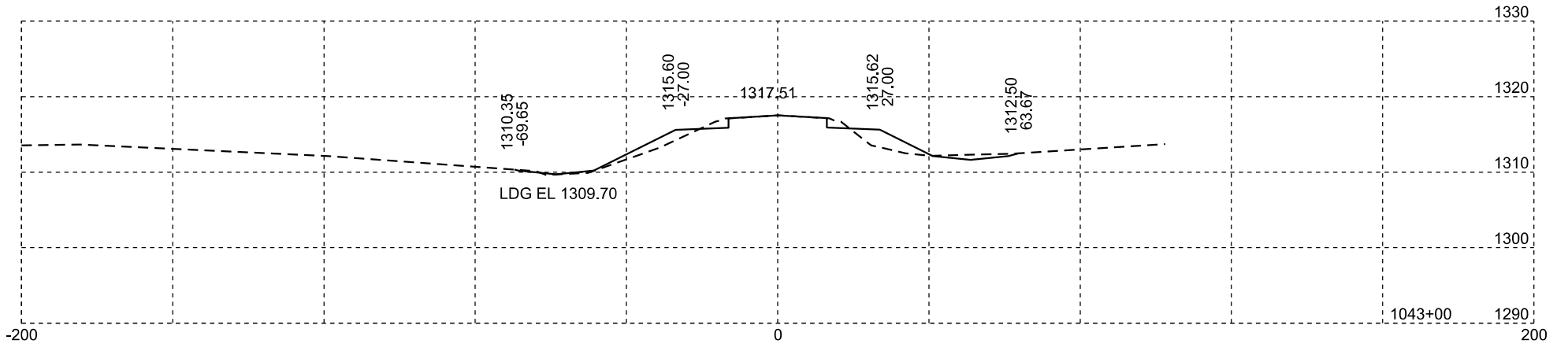
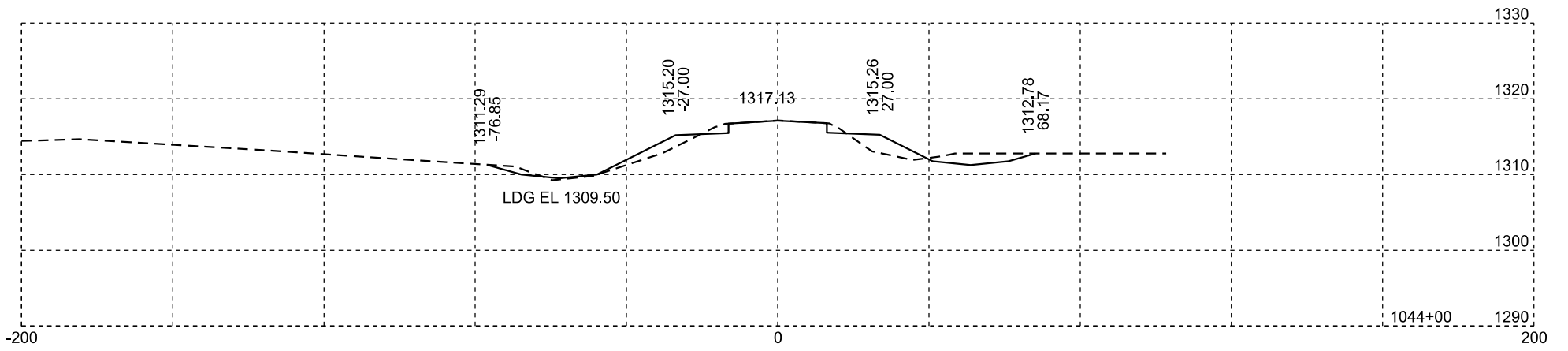
Rev 03/12/2024 DRM
Plotting Date: 03/13/2024

STATE OF SOUTH DAKOTA	PROJECT	SHEET NO.	TOTAL SHEETS
	P-PH-B-PT 0010(124)296	X19	X169



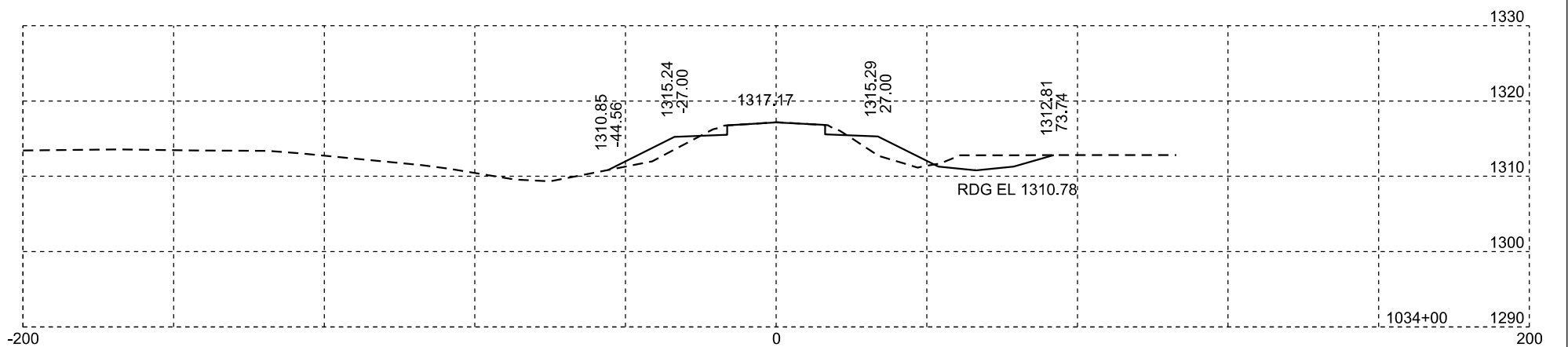
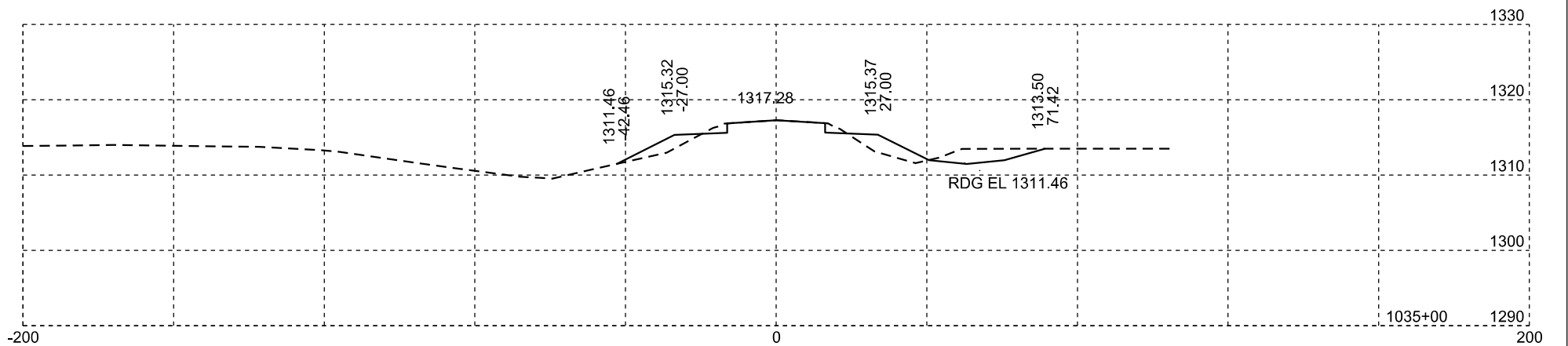
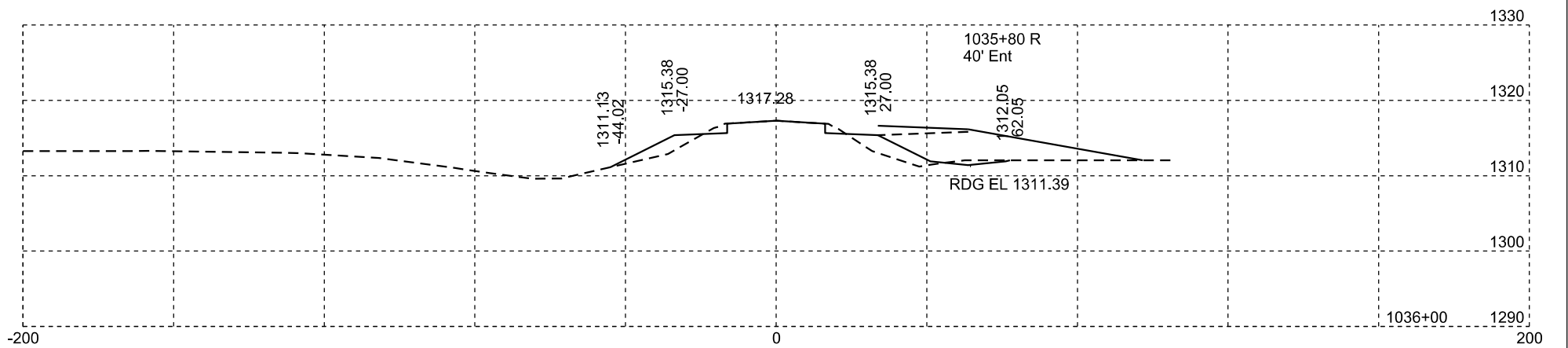
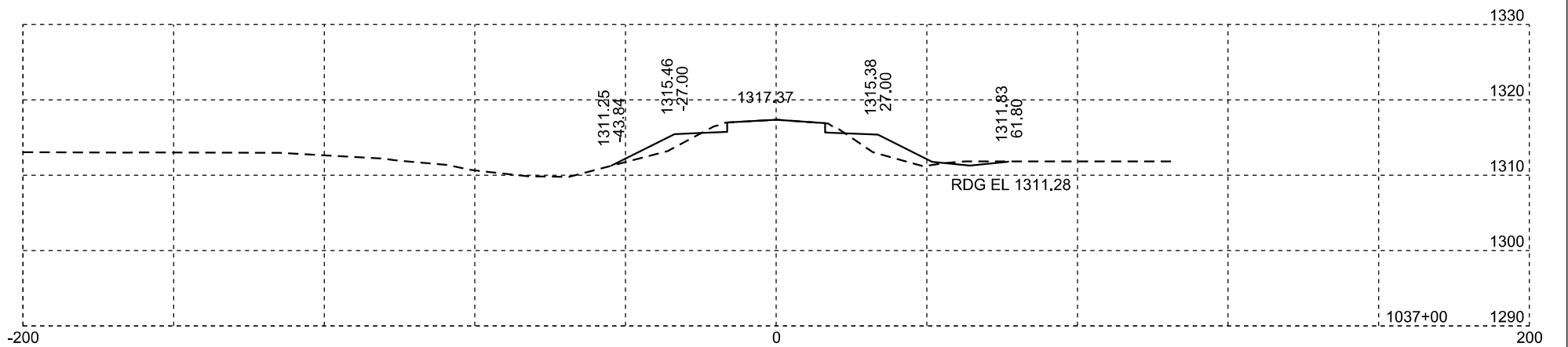
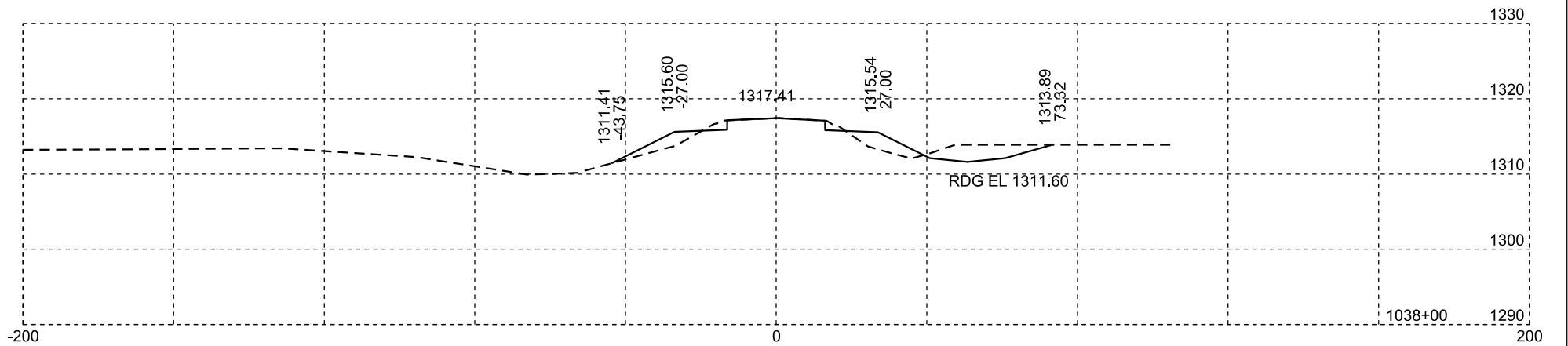
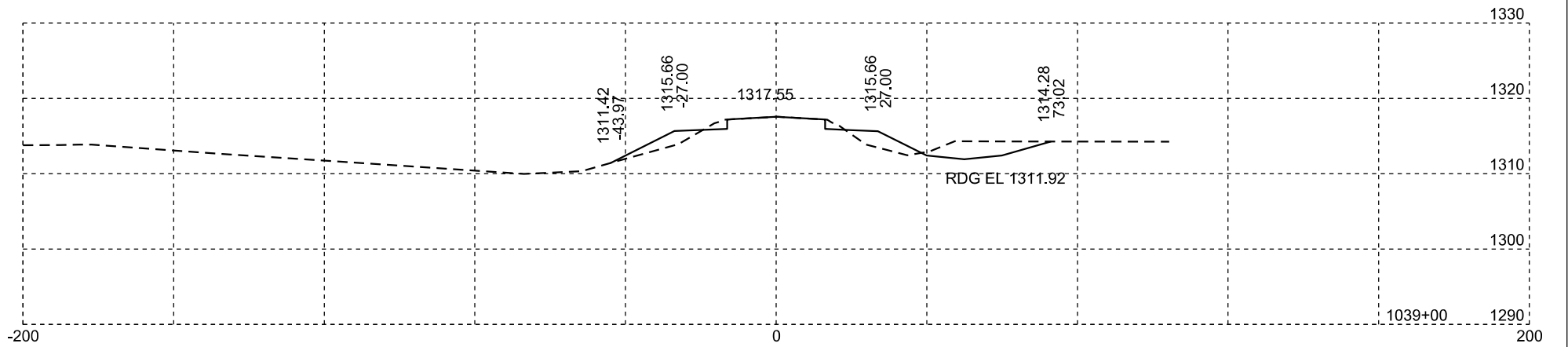
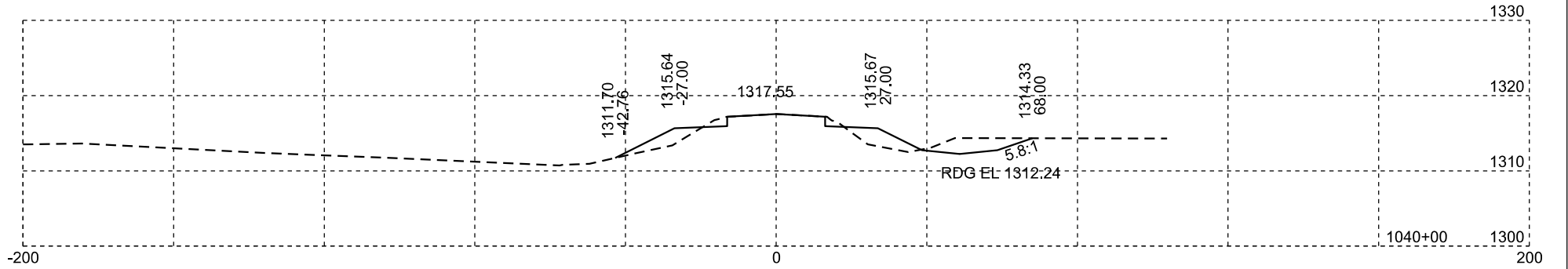
Rev 03/12/2024 DRM
 Plotting Date: 03/13/2024

STATE OF SOUTH DAKOTA	PROJECT	SHEET NO.	TOTAL SHEETS
	P-PH-B-PT 0010(124)296	X21	X169



Rev 03/12/2024 DRM
 Plotting Date: 03/13/2024

STATE OF SOUTH DAKOTA	PROJECT	SHEET NO.	TOTAL SHEETS
	P-PH-B-PT 0010(124)296	X51	X169



Rev 03/12/2024 DRM
 Plotting Date: 03/13/2024

STATE OF SOUTH DAKOTA	PROJECT	SHEET NO.	TOTAL SHEETS
	P-PH-B-PT 0010(124)296	X52	X169

