

October 10, 2024

ADDENDUM NO. 1

RE: Item #4, October 16, 2024 Letting - EM 0073(73)62, PCN 05HV, 08EH, Jackson County - Grading, Interim Surfacing, Replace Str RCBC (2-11'x9' CIP or Precast RCBC)

TO WHOM IT MAY CONCERN:

The following addenda to the plans shall be inserted and made a part of your proposal for the referenced project.

SPECIAL PROVISIONS: NO CHANGE

SDEBS BID PROPOSAL: NO CHANGE

PLANS: Please destroy sheets B7, B19, B35, B49, G-6, G-7, G-8, G-9, G-10, G-11, G-12 and Z28 and replace with the enclosed sheets, dated 10/9/24 and 10/10/24. Sheets G-5A, G-7A, G-7B, G-10A and G-12A.

Sheet B7: INCIDENTAL WORK GRADING table was revised.
Added pipe at 10+02 L, Added text to cattle pass at 269+88 to note that this was previously plugged, Removed duplicate pipe 459+86-49' L

Sheet B19: Take out note for pipe at 10+02-49' L was added.

Sheet B35: Cattle pass take out note at 269+88 was revised.

Sheet B49: Duplicate pipe take out note 459+89-49' L was removed.

Sheet G-5A, G-7A, G-7B, G-10A, G-12A: Waterline cross section for bore and jack locations were added. Minimum length of casing pipe needed and reference to install specifications note was added.

Sheet G-6, G-7, G-8, G-9, G-10 G-11, G-12: Install location notes for waterline restraints required for a slope greater than 15% were added. *Please note that restraints are required on both ends of the pipe in case of fittings (ie from a tee to a hydrant assembly) and a full 20-foot length of pipe must extend from any joint restraint in the case of pipe replacement sections.*

Sheet Z28: Cross section pipe install note was revised to 354+88-49' R.

Sincerely,

Sam Weisgram
Engineering Supervisor

SW/cj

CC: Jason Humphrey, Pierre Region Engineer
Doug Sherman, Winner Area Engineer

EXCAVATION FOR DEEP PIPE AND BOX CULVERT REMOVAL

Included in the quantity of "Unclassified Excavation" are 69,752 cubic yards of excavation for removal of deep pipes and box culverts. Deep pipes and box culverts are existing mainline pipes or box culverts at depths of 10 feet or greater (measured from the flow line to the lowest elevation of either the existing ground line, undercut line, or bottom of removed or salvaged surfacing).

All work necessary to excavate and backfill the deep pipes and box culverts including labor, equipment, and incidentals will be incidental to the contract unit price per cubic yard for "Unclassified Excavation". Payment for deep pipe and box culvert excavation will be based only on plans quantity and measurement of these excavation quantities during construction will not be performed.

The excavation quantities for deep pipes and box culverts are not included with the earthwork balance quantities on the plans profile sheets. The quantities computed for excavation of the deep pipes and box culverts are based on the limits shown in the drawing below. The drawing shows a box culvert for illustration purposes only; the limits are similar for a pipe.

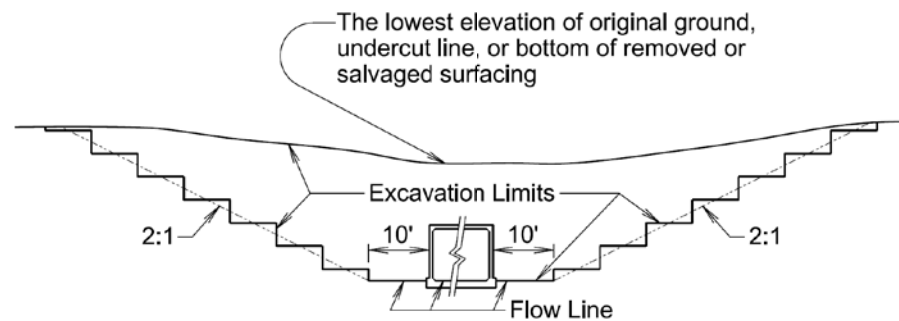


TABLE OF EXCAVATION FOR DEEP PIPE AND BOX CULVERT REMOVAL

| Station | Type | Quantity (CuYd) |
|---------|------|-----------------|
| * 39+51 | RCBC | 2,382 |
| 48+16 | Pipe | 1,567 |
| 68+12 | Pipe | 2,061 |
| 92+12 | Pipe | 2,252 |
| 145+56 | Pipe | 4,894 |
| 157+13 | Pipe | 3,516 |
| 241+64 | Pipe | 3,096 |
| 249+63 | Pipe | 3,655 |
| 259+70 | Pipe | 6,959 |
| 294+99 | Pipe | 3,348 |
| 304+99 | Pipe | 2,687 |
| 307+17 | Pipe | 10,394 |
| 316+66 | Pipe | 7,091 |
| 331+92 | Pipe | 1,213 |
| 379+02 | Pipe | 1,978 |
| 395+76 | Pipe | 2,418 |
| 400+37 | Pipe | 4,853 |
| 413+18 | Pipe | 5,388 |
| Total: | | 69,752 |

* The excavation quantity includes excavation for the installation of the new RCBC at Station 39+51.

TABLE OF CONCRETE CURB AND/OR GUTTER REMOVAL

| Station | to | Station | L/R | Quantity (Ft) |
|---------|----|---------|-----|---------------|
| 458+89 | | 459+00 | R | 46.9 |
| 459+61 | | 459+64 | R | 45.8 |
| 460+01 | | 460+16 | R | 54.2 |
| Total: | | | | 148 |

TABLE OF DROP INLET REMOVAL

All costs for removal of the frame and grate assembly will be incidental to the contract unit price per each for "Remove Drop Inlet".

| Station | L/R | Quantity (Each) |
|---------|-----|-----------------|
| 459+68 | R | 1 |
| Total: | | 1 |

TABLE OF REMOVE CATTLE GUARDS FOR RESET

| Station | L/R | Size |
|---------|-----|-----------------------------|
| 411+00 | L | 22' Cattle Guard with Wings |
| 419+86 | L | 14' Cattle Guard with Wings |

INCIDENTAL WORK, GRADING

| Station | L/R | Remarks |
|------------|-----|--|
| 10+02 | L | Take Out 24"-61' CMP |
| 17+79 | | Take Out 30"-89' RCP |
| 23+79-47' | R | Take Out 18"-56' RCP |
| 32+69 | | Take Out 18"-60' RCP |
| 48+16 | | Take Out 18"-111' RCP |
| 49+61-49' | L | Take Out 18"-60' RCP |
| 67+87 | | Take Out 4'x6'-54' Cattle Pass |
| 74+15 | | Take Out 48"-60' RCP |
| 82+15 | | Take Out 18"-168' CMP |
| 88+75 | | Take Out 24"-165' CMP |
| 89+66 | | Take Out 4" Polyethylene Drainage Tubing |
| 89+66 | L&R | Remove Headwalls for Reset |
| 91+00 | L&R | Reset Headwalls for Cutoff Drain |
| 92+12 | | Take Out 24"-344' CMP |
| 95+35 | | Take Out 24"-135' CMP |
| 106+98-64' | R | Take Out 18"-44' RCP |
| 107+00-69' | L | Take Out 18"-44' RCP |
| 108+34 | | Take Out 24"-82' RCP |
| 138+14-65' | R | Take Out 18"-78' CMP |
| 145+56 | | Take Out 24"-189' CMP |
| 157+13 | | Take Out 24"-154' RCP |
| 166+63 | | Take Out 36"-117' RCP |
| 171+11-56' | L | Take Out 18"-61' CMP |
| 171+12-54' | R | Take Out 18"-70' CMP |
| 175+61-54' | L | Take Out 18"-69' CMP |
| 185+62 | | Take Out 18"-100' RCP |
| 190+21 | | Take Out 18"-128' CMP |

| Station | L/R | Remarks |
|------------|-----|--|
| 196+27 | | Take Out 24"-214' CMP |
| 204+51-54' | R | Take Out 18"-61' CMP |
| 219+92 | | Take Out 18"-212' CMP |
| 226+20 | | Take Out 24"-168' CMP |
| 227+81 | | Take Out 18"-147' CMP |
| 231+94 | | Take Out 24"-190' CMP |
| 237+44 | | Take Out 18"-80' CMP |
| 241+65 | | Take Out 24"-194' CMP |
| 249+63 | | Take Out 24"-199' CMP |
| 259+70 | | Take Out 24"-198' CMP |
| 269+68 | | Take Out 4'x6'-49' Cattle Pass *Previously plugged with dirt material |
| 287+86 | | Take Out 18"-149' RCP |
| 294+99 | | Take Out 24"-128' CMP |
| 304+99 | | Take Out 24"-120' CMP |
| 307+17 | | Take Out 54"-167' CMP |
| 316+66 | | Take Out 24"-180' CMP |
| 326+36 | | Take Out 24"-105' CMP |
| 331+92 | | Take Out 18"-106' RCP |
| 340+91 | | Take Out 18"-63' RCP |
| 354+88-47' | R | Take Out 18"-63' RCP |
| 368+03-48' | R | Take Out 18"-67' RCP |
| 368+08-40' | L | Take Out 18"-60' RCP |
| 372+37 | | Take Out 24"-89' RCP |
| 379+02 | | Take Out 24"-123' RCP |
| 395+76 | | Take Out 30"-131' RCP |
| 400+37 | | Take Out 18"-160' RCP |
| 403+11-50' | L | Take Out 18"-73' RCP |
| 407+79-51' | R | Take Out 18"-65' RCP |
| 413+18 | | Take Out 36"-182' RCP |
| 420+72 | | Take Out 18"-87' RCP |
| 421+22-52' | R | Take Out 18"-65' CMP |
| 423+14-45' | L | Take Out 18"-59' RCP |
| 423+79-41' | R | Take Out 18"-67' CMP |
| 427+42 | | Take Out 24"-97' CMP |
| 439+12-48' | R | Take Out 24"-92' RCP |
| 442+39-41' | R | Take Out 18"-79' RCP |
| 443+66-45' | L | Take Out 18"-75' RCP |
| 444+94 | R | Added Fill Between Entrances to Direct Drainage Away from Roadway |
| 444+96-43' | L | Take Out 18"-78' RCP |
| 445+32-43' | R | Take Out 18"-85' CMP |
| 447+80-44' | L | Take Out 18"-95' RCP |
| 448+32 | | Take Out 18"-67' RCP |
| 451+31-62' | L | Take Out 18"-73' RCP |
| 453+33-57' | R | Take Out 18"-81' RCP |
| 453+35-63' | L | Take Out 18"-73' RCP |
| 455+27-57' | R | Take Out 18"-74' RCP |
| 455+42-68' | L | Take Out 18"-74' RCP |
| 457+04-69' | R | Take Out 18"-85' RCP |
| 457+35-63' | L | Take Out 18"-73' RCP |
| 457+79 | | Take Out 24"-69' RCP |
| 458+43-51' | L | Take Out 18"-65' CMP |
| 459+89-51' | L | Take Out 18"-65' CMP |
| 459+86-50' | R | Take Out 18"-62' CMP |

Plot Scale - 1:200

Plotted From - TRPR17190

File - U:\trproj\jacob5\HV000.dgn

| | | | |
|-----------------------|--------------------------------|-------|--------------|
| STATE OF SOUTH DAKOTA | PROJECT | SHEET | TOTAL SHEETS |
| | NH 0073(73)62 P 0248(17)162 | B19 | B92 |

Plotting Date: 10/10/2024 Rev 10/10/2024 RU

10+02-49' L
Take Out 24"-61' CMP
(Incidental Work, Grading)

17+79
Take Out 30"-89' RCP
(Incidental Work, Grading)

23+79-47' R
Take Out 18"-56' CMP
(Incidental Work, Grading)

10+00-49' L
Install 18"-58' RCP
& 2 Safety Ends

17+79 (65 ac)
Install Twin 42"-80' RCP
(Spaced 24' C to C)
& 4 Flared Ends

23+78-49' R
Install 18"-62' CMP
& 2 Safety Ends

23+80 L
Refurbish Single Mailbox



Sec 12 - T43N - R36W

NE1/4

Charles L. VanderMay &
Janet D. VanderMay
Parcel A1

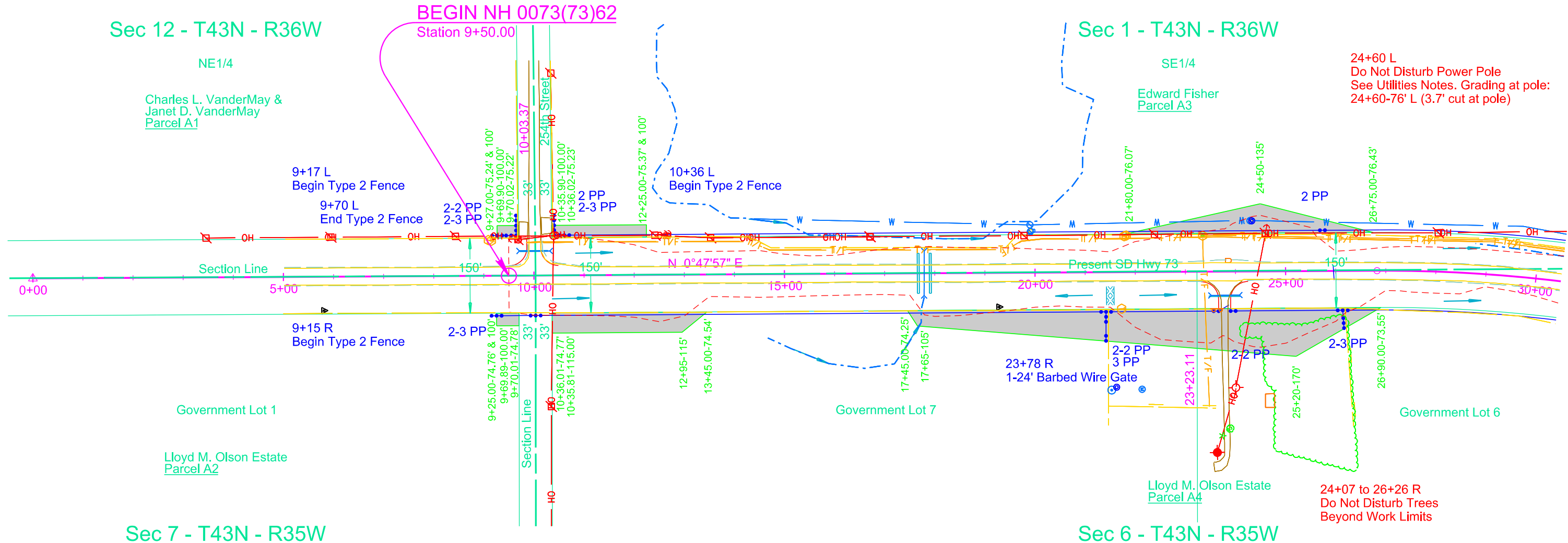
BEGIN NH 0073(73)62
Station 9+50.00

Sec 1 - T43N - R36W

SE1/4

Edward Fisher
Parcel A3

24+60 L
Do Not Disturb Power Pole
See Utilities Notes. Grading at pole:
24+60-76' L (3.7' cut at pole)



Parcel A1
9+27.00 to 9+70.02 L
Temporary Easement containing
0.1 ac, more or less

Parcel A3
10+35.90 to 12+25.00 L
Temporary Easement containing
0.1 ac, more or less

Parcel A3
21+80.00 to 26+75.00 L
Temporary Easement containing
0.3 ac, more or less

Parcel A2
9+25.00 to 9+70.01 R
Temporary Easement containing
0.1 ac, more or less

Parcel A4
10+36.01 to 13+45.00 R
Temporary Easement containing
0.3 ac, more or less

Parcel A4
17+45.00 to 26+90.00 R
Temporary Easement containing
1.3 ac, more or less

File - U:\trproj\jacob5\HV000.dgn

241+65
Take Out 24"-194' CMP
(Incidental Work, Grading)

241+64 (6 ac)
Install 24"-230' RCP
(CL3-94', CL4-72', CL3-64')
& 2 Sloped Ends

242+49 L
Install Bank and Channel
Protection Gabions (4.5 CuYd)
and Type B Drainage Fabric
(15 SqYd)

249+63
Take Out 24"-199' CMP
(Incidental Work, Grading)

249+63 (3 ac)
Install 24"-144' RCP
(CL3-144')
Install 24"-60' CMP (10' & 50')
(Skewed 37° LHF)
And 2-15° CMP Elbows
& 1-24" RCP to CMP Outlet Transition
& 1 RCP Sloped End
& 1 CMP Sloped End

248+82 R
Install Bank and Channel
Protection Gabions (4.5 CuYd)
and Type B Drainage Fabric
(15 SqYd)

259+70
Take Out 24"-198' CMP
(Incidental Work, Grading)

259+70 (9 ac)
Install 24"-262' RCP
(CL3-62', CL4-34', CL5-68',
CL4-38' CL3-60')
(Skewed 36° LHF)
& 2 Sloped Ends

258+85 R
Install Bank and Channel
Protection Gabions (4.5 CuYd)
and Type B Drainage Fabric
(15 SqYd)

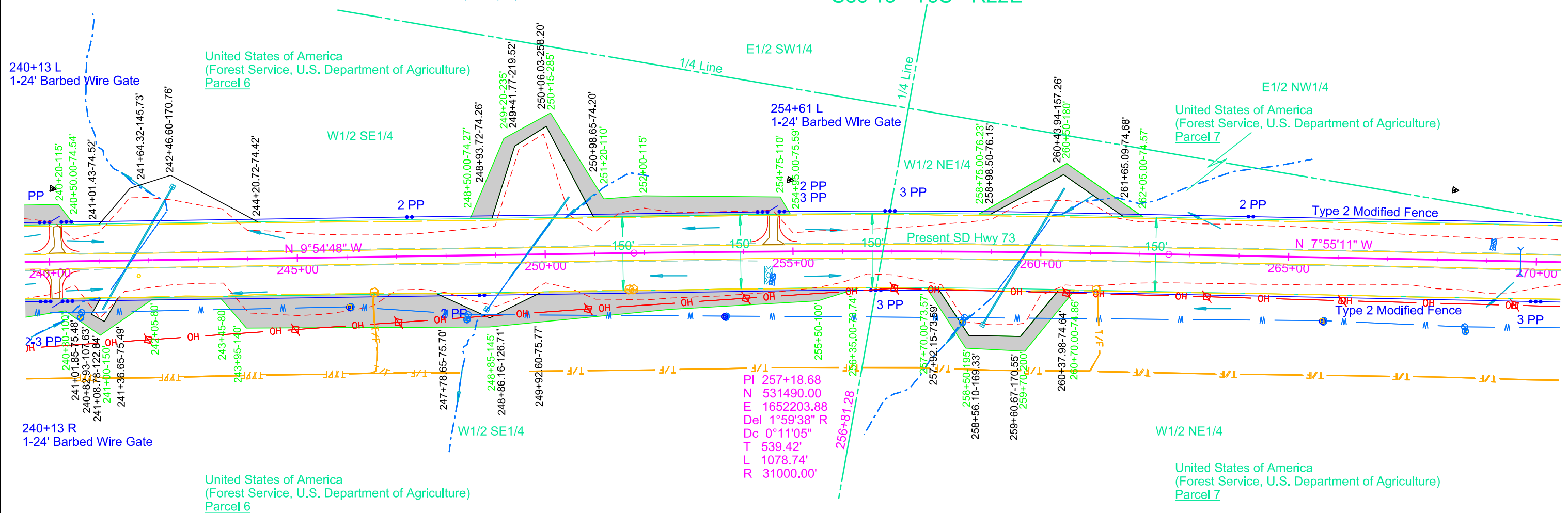
269+68
Take Out 4'x6'-49' Cattle Pass
(Previously plugged with dirt)
(Incidental Work, Grading)

| | | | |
|-----------------------------|--------------------------------|-------|-----------------|
| STATE OF SOUTH DAKOTA | PROJECT | SHEET | TOTAL SHEETS |
| | NH 0073(73)62 P 0248(17)162 | B35 | B92 |

Plotting Date: 10/10/2024 Rev 10/10/2024 RU



Sec 18 - T3S - R22E



Parcel 6
248+50.00 to 254+95.00 L
Temporary Easement containing
0.6 ac, more or less

Parcel 7
258+75.00 to 262+05.00 L
Temporary Easement containing
0.1 ac, more or less

Parcel 7
257+70.00 to 260+70.00 R
Temporary Easement containing
0.2 ac, more or less

Plot Scale - 1:200

Plotted From - TRPR17190

File - U:\trproj\jacob0514\17240.dgn

451+31-62' L
Take Out 18"-73' RCP
(Incidental Work, Grading)

451+33-49' L
Install 18"-70' RCP
& 2 Safety Ends

453+33-57' R
Take Out 18"-81' RCP
(Incidental Work, Grading)

453+35-63' L
Take Out 18"-73' RCP
(Incidental Work, Grading)

453+32-49' R
Install 18"-56' RCP
& 2 Safety Ends

453+32-49' L
Install 18"-72' RCP
& 2 Safety Ends

455+27-57' R
Take Out 18"-74' RCP
(Incidental Work, Grading)

455+42-68' L
Take Out 18"-74' RCP
(Incidental Work, Grading)

455+27-49' R
Install 18"-58' RCP
& 2 Safety Ends

455+43-49' L
Install 18"-72' RCP
& 2 Safety Ends

457+04-69' R
Take Out 18"-85' RCP
(Incidental Work, Grading)

457+35-63' L
Take Out 18"-73' RCP
(Incidental Work, Grading)

457+00-49' R
Install 18"-58' RCP
& 2 Safety Ends

457+34-49' L
Install 18"-72' RCP
& 2 Safety Ends

457+78.65
Take Out 24"-69' RCP
(Incidental Work, Grading)

458+43-51' L
Take Out 18"-65' CMP
(Incidental Work, Grading)

457+79 (9 ac)
Install 24"-72' RCP
(Skewed 11° LHF)
& 2 Sloped Ends

458+42-49' L
Install 18"-72' RCP
& 2 Safety Ends

458+70-49' R
Install 18"-76' RCP
& 2 Safety Ends

459+89-51' L
Take Out 18"-65' CMP
(Incidental Work, Grading)

459+68-50' R
Remove Drop Inlet

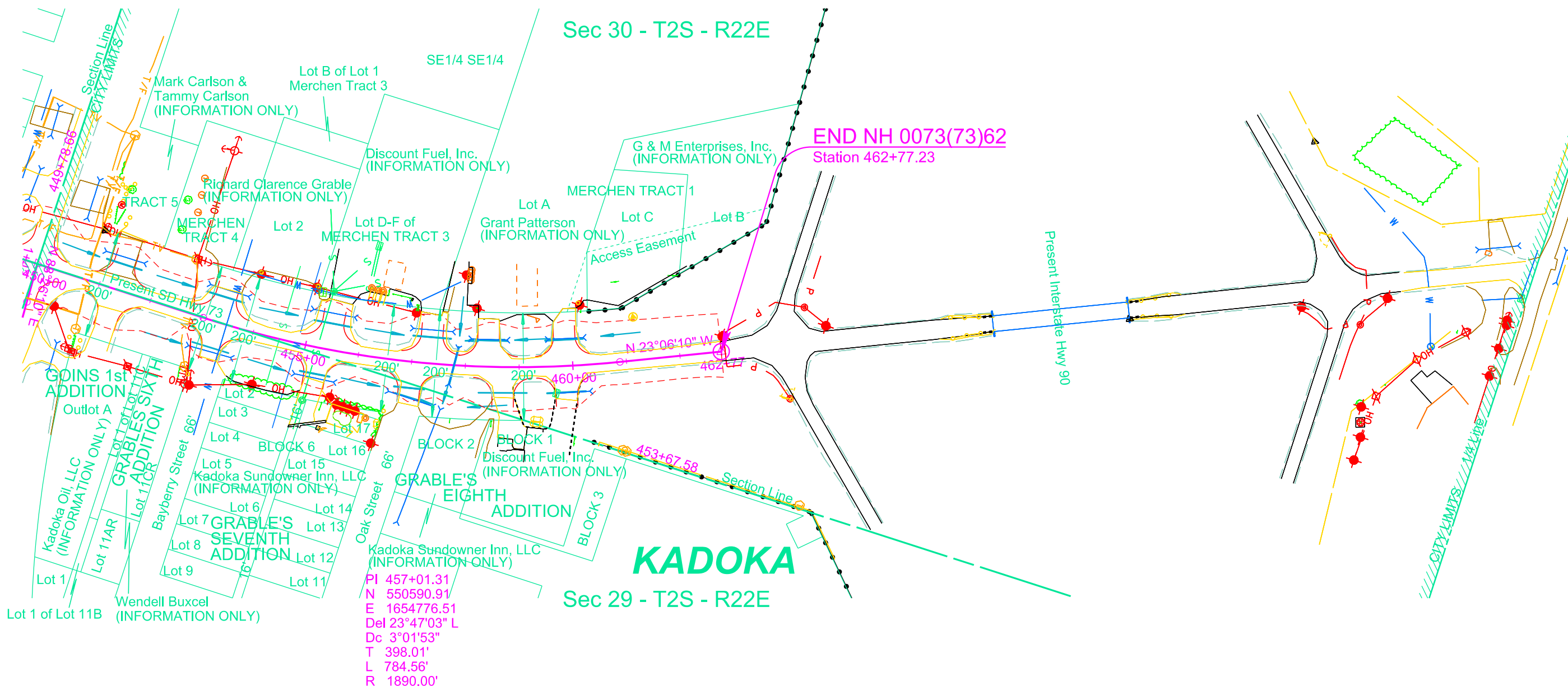
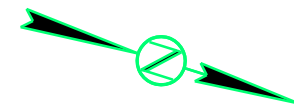
459+86-50' R
Take Out 18"-62' CMP
(Incidental Work, Grading)

459+86-49' R
Install 18"-74' RCP
& 2 Safety Ends

459+86-49' L
Install 18"-72' RCP
& 2 Safety Ends

| | | | |
|-----------------------|--------------------------------|-------|--------------|
| STATE OF SOUTH DAKOTA | PROJECT | SHEET | TOTAL SHEETS |
| | NH 0073(73)62 P 0248(17)162 | | |

Plotting Date: 10/10/2024 Rev 10/10/2024 RU

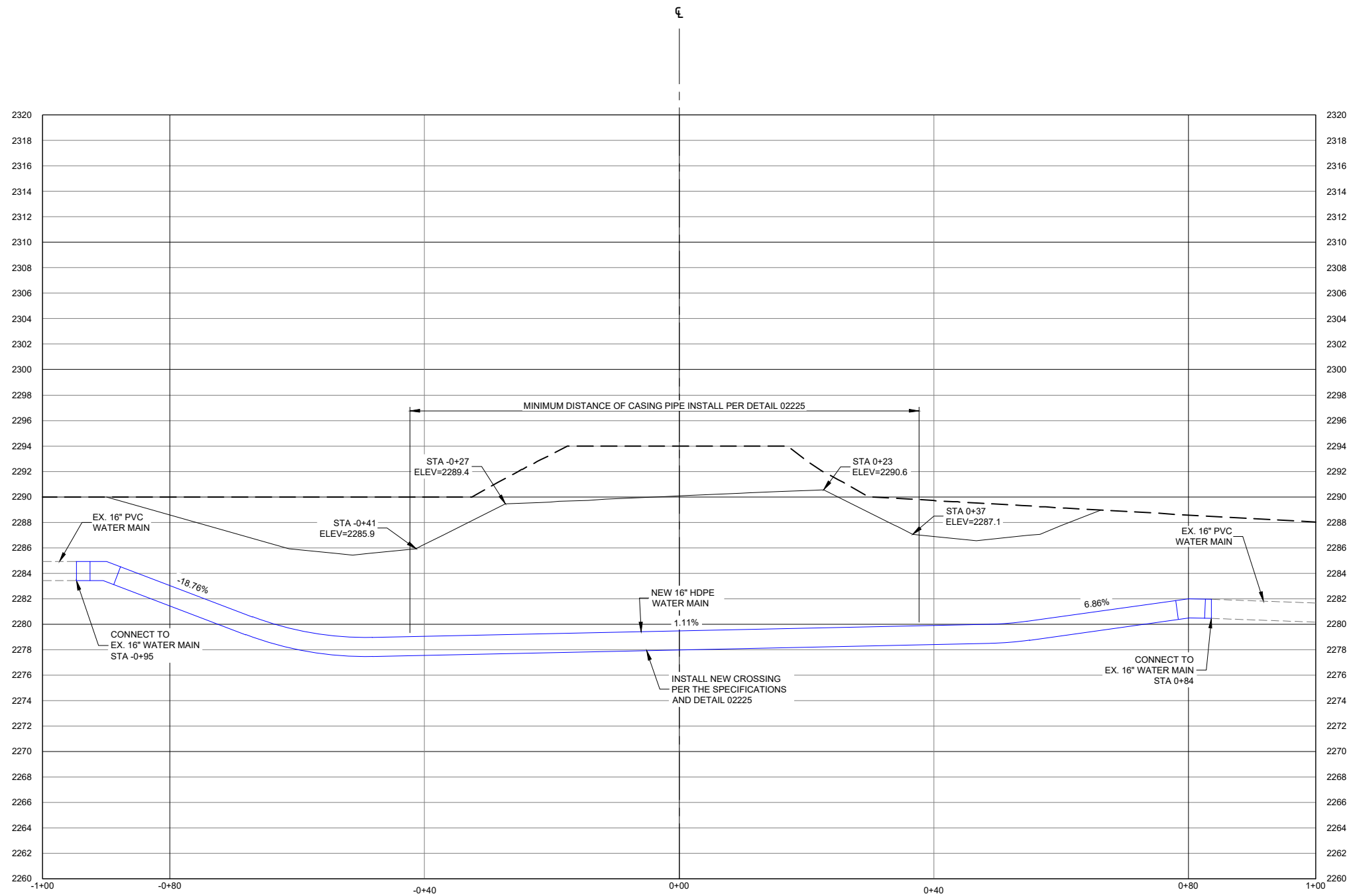


PI 457+01.31
 N 550590.91
 E 1654776.51
 Del 23°47'03" L
 Dc 3°01'53"
 T 398.01'
 L 784.56'
 R 1890.00'

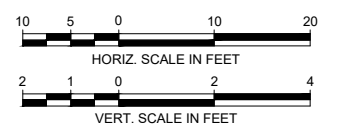
Plot Scale - 1:200

Plotted From - TRPR17190

File - U:\trp\j\ack051\4\450.dgn



WATERLINE CROSSING STA 74+27



Q:\24\B\W\H\HIGHWAY 73 NORTH PIPELINE RELOCATIONS\ACAD\SSHEE\TS\029_X-SECTIONS.MDT.DWG

VERIFY SCALE!
 THESE PRINTS MAY BE REDUCED.
 LINE BELOW MEASURES ONE INCH
 ON ORIGINAL DRAWING.
 MODIFY SCALE ACCORDINGLY!
 PLOTTED BY:LANE URICK ON Oct/10/2024

| REVISIONS | | | | |
|-----------|----------------|-----|------------|--|
| NO. | DESCRIPTION | BY | DATE | |
| 1 | REV 10/09/2024 | MRK | 10/09/2024 | |
| | | | | |
| | | | | |

Morrison Maierle
 engineers • surveyors • planners • scientists

1321 8th Ave. North, Suite 104
 Great Falls, MT 59401
 406.454.1513
 www.m-m.net

COPYRIGHT © MORRISON-MAIERLE, 2024

REGISTERED PROFESSIONAL ENGINEER
 REG. NO. 05/18/2024
 13037
 MICHAEL R. KYNETT
 SOUTH DAKOTA

DRAWN BY: _____
 DSGN. BY: _____
 APPR. BY: _____
 DATE: 11/06/2023

Q.C. REVIEW
 BY: _____
 DATE: _____

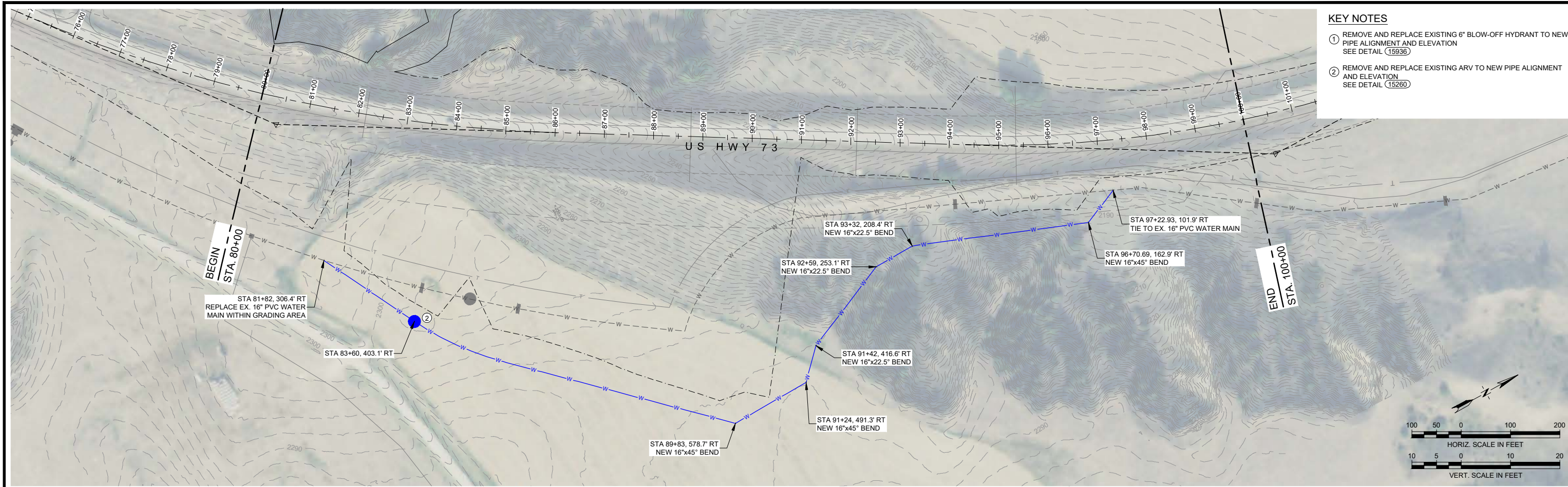
OGALA SIOUX TRIBE HWY 73 NORTH
 WATERLINE RELOCATIONS
 JACKSON COUNTY
 SOUTH DAKOTA

WATERLINE CROSSING
 STA 74+27

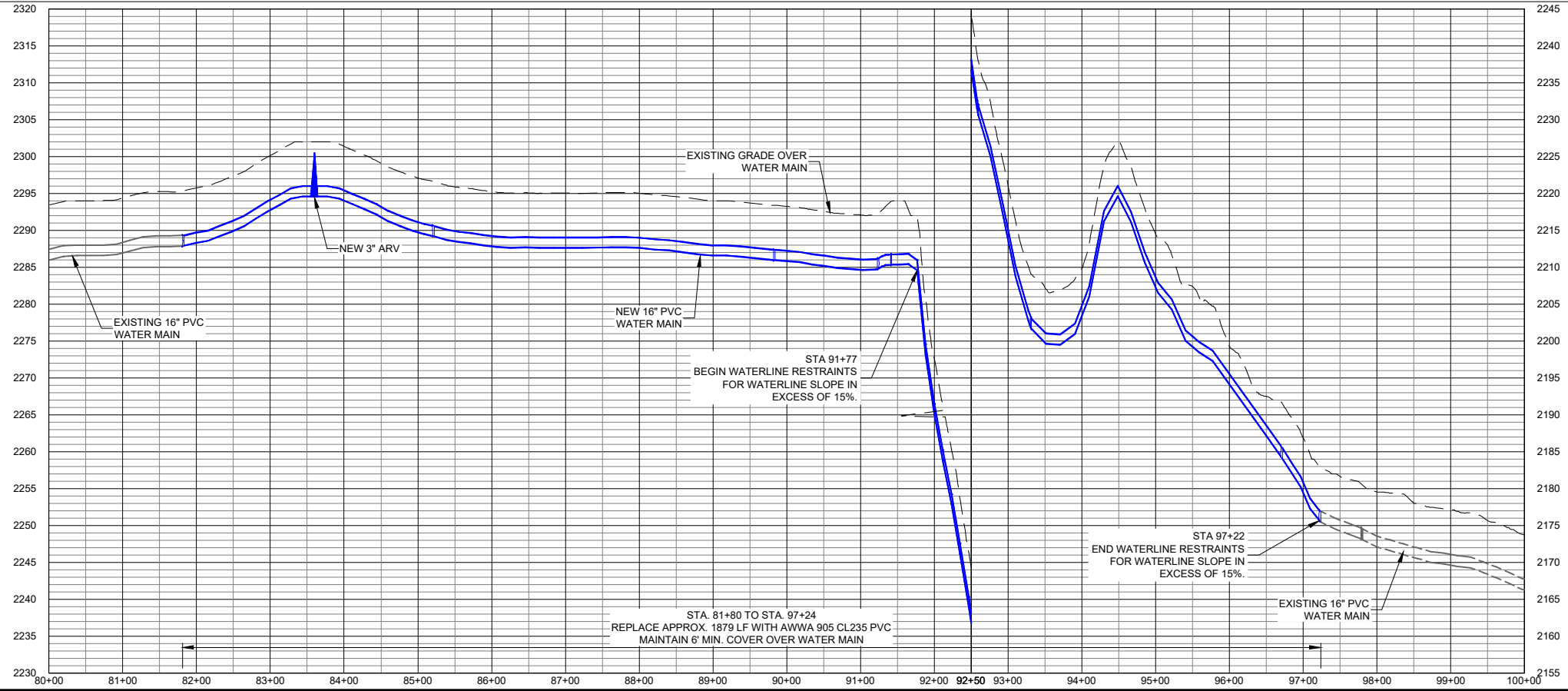
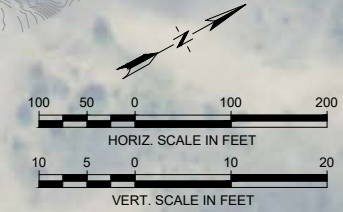
PROJECT NUMBER
2246.029.17

SHEET NUMBER
5A

DRAWING NUMBER
G-5A



- KEY NOTES**
- 1 REMOVE AND REPLACE EXISTING 6" BLOW-OFF HYDRANT TO NEW PIPE ALIGNMENT AND ELEVATION SEE DETAIL (15936)
 - 2 REMOVE AND REPLACE EXISTING ARV TO NEW PIPE ALIGNMENT AND ELEVATION SEE DETAIL (15260)



Q:\24\BIM\CH-HIGHWAY 73 NORTH PIPELINE RELOCATIONS\CAD\SHS\029_G-6.DWG

VERIFY SCALE!
 THESE PRINTS MAY BE REDUCED.
 LINE BELOW MEASURES ONE INCH
 ON ORIGINAL DRAWING.
 MODIFY SCALE ACCORDINGLY!
 PLOTTED BY:LANE URICK ON Oct/10/2024

| REVISIONS | | | |
|-----------|----------------|-----|------------|
| NO. | DESCRIPTION | BY | DATE |
| 1 | REV 10/09/2024 | MRK | 10/09/2024 |
| | | | |
| | | | |

Morrison Maierle
 engineers • surveyors • planners • scientists

1321 8th Ave. North, Suite 104
 Great Falls, MT 59401
 406.454.1513
 www.m-m.net

PROFESSIONAL ENGINEER
 REG. NO. 13037
 05/18/2024
 MICHAEL R. KYNETT
 SOUTH DAKOTA

PROJECT NUMBER: 2246.029.17
 SHEET NUMBER: 6
 DRAWING NUMBER: G-6

OGDLA SIOUX TRIBE HWY 73 NORTH
 WATERLINE RELOCATIONS
 SOUTH DAKOTA

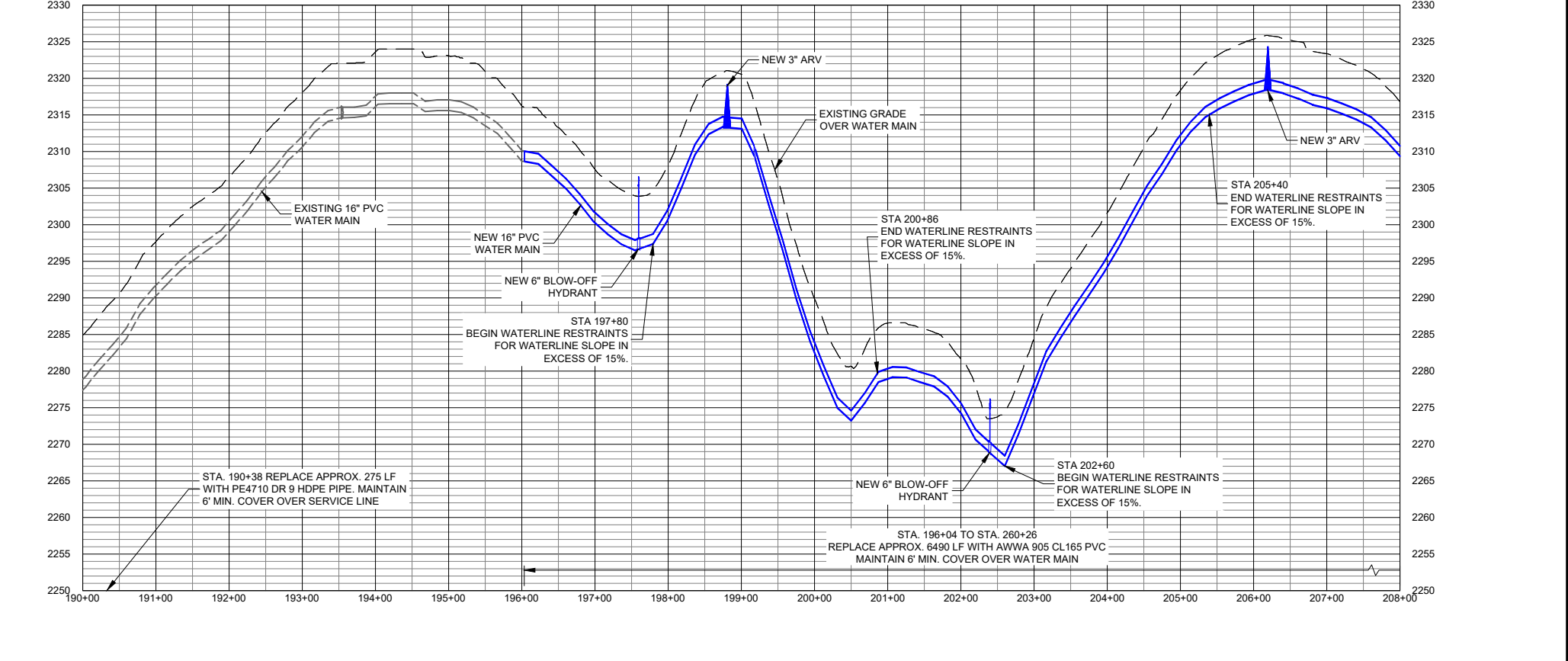
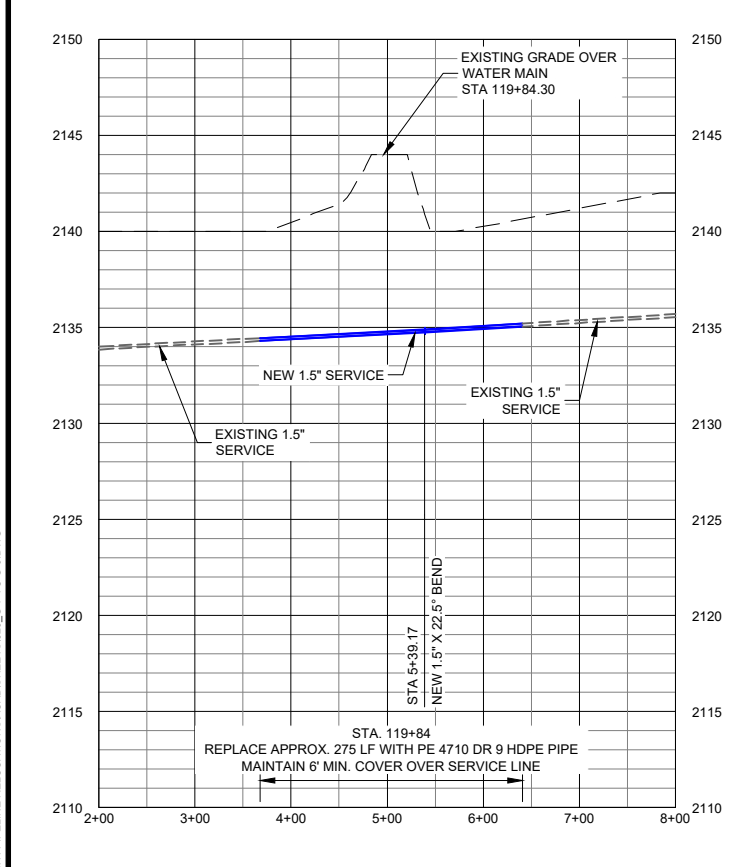
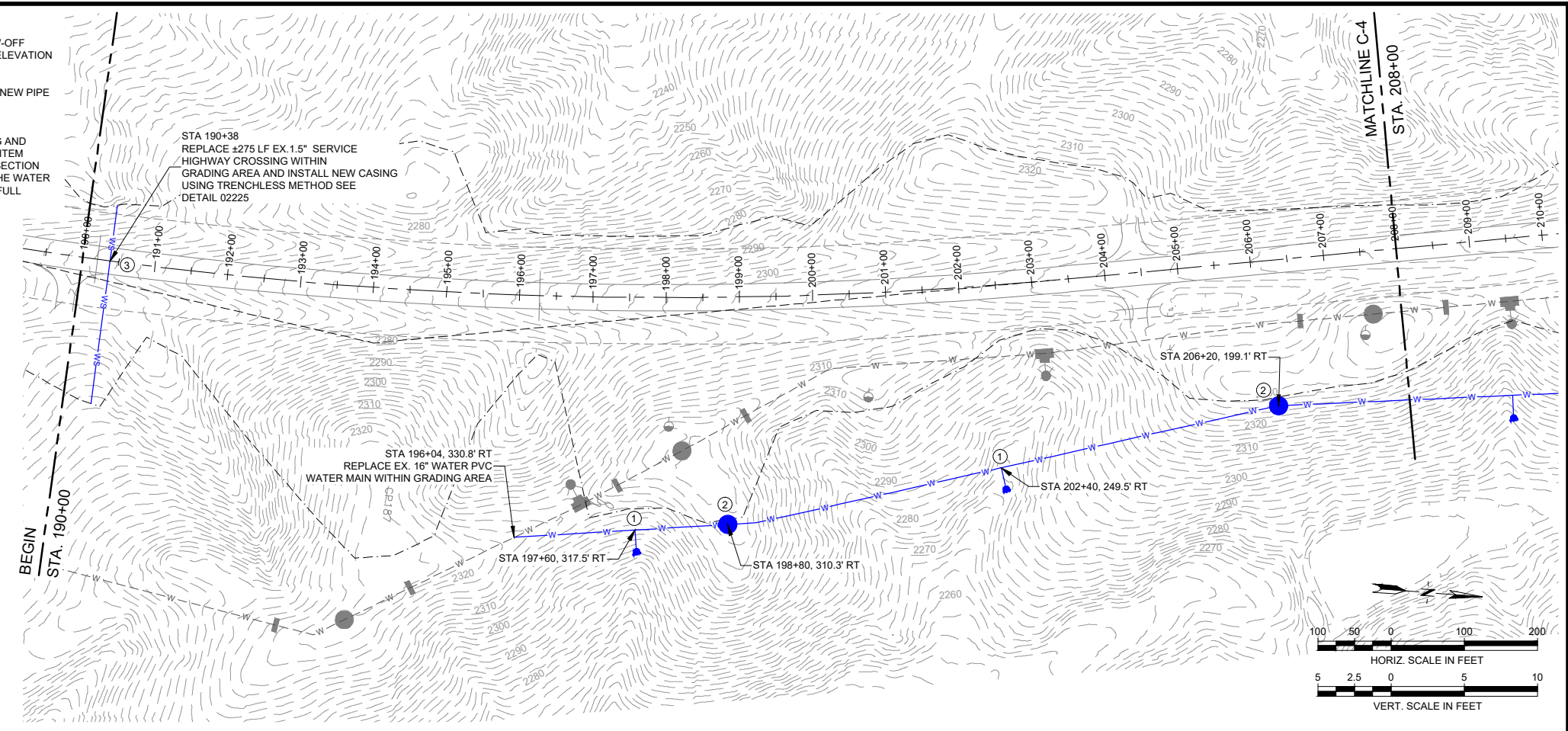
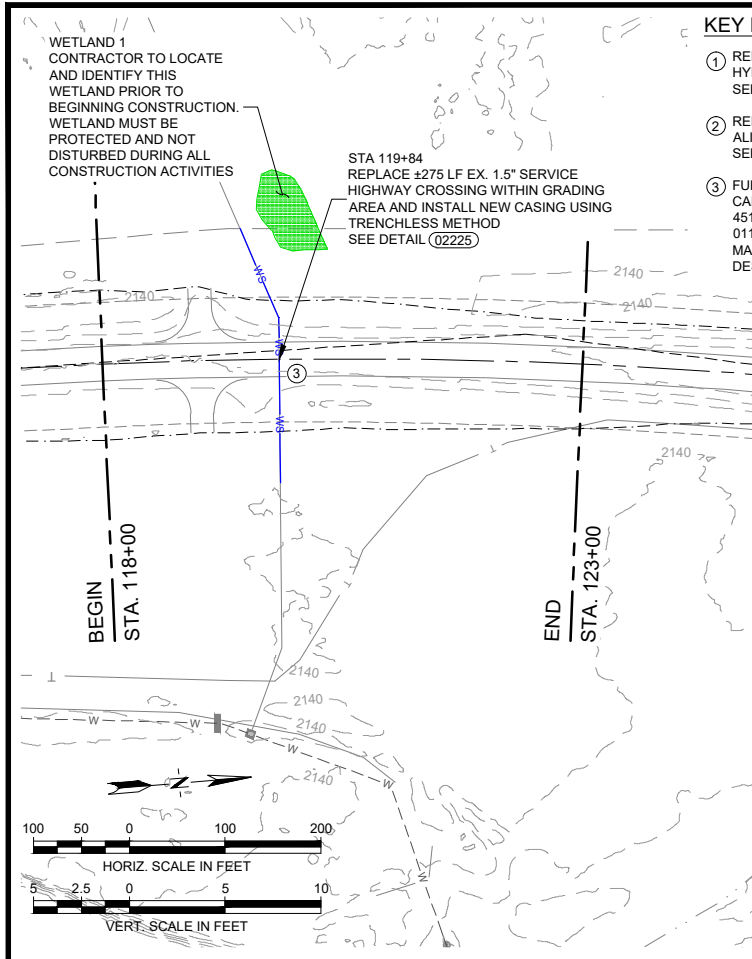
JACKSON COUNTY

PLAN AND PROFILE
 STA 80+00 TO STA 100+00

DRAWN BY: _____
 DSGN. BY: _____
 APPR. BY: _____
 DATE: 11/06/2023

Q.C. REVIEW BY: _____
 DATE: _____

PROJECT NUMBER: 2246.029.17
 SHEET NUMBER: 6
 DRAWING NUMBER: G-6



VERIFY SCALE! THESE PRINTS MAY BE REDUCED. LINE BELOW DESCRIBES ONE INCH ON ORIGINAL DRAWING. MODIFY SCALE ACCORDINGLY!

| REVISIONS | | | |
|-----------|----------------|-----|------------|
| NO. | DESCRIPTION | BY | DATE |
| 1 | REV 6/21/2024 | MRK | 6/21/2024 |
| 2 | REV 10/09/2024 | MRK | 10/09/2024 |

Morrison Maierle
engineers • surveyors • planners • scientists

1321 8th Ave. North, Suite 104
Great Falls, MT 59401
406.454.1513
www.m-m.net

REGISTERED PROFESSIONAL ENGINEER
05/18/2024
13037
MICHAEL R. KYNETT

DATE: 11/06/2023

Q.C. REVIEW BY: DATE:

DRAWN BY: DSGN BY: APPR BY: DATE: 11/06/2023

OGALA SIOUX TRIBE HWY 73 NORTH WATERLINE RELOCATIONS SOUTH DAKOTA

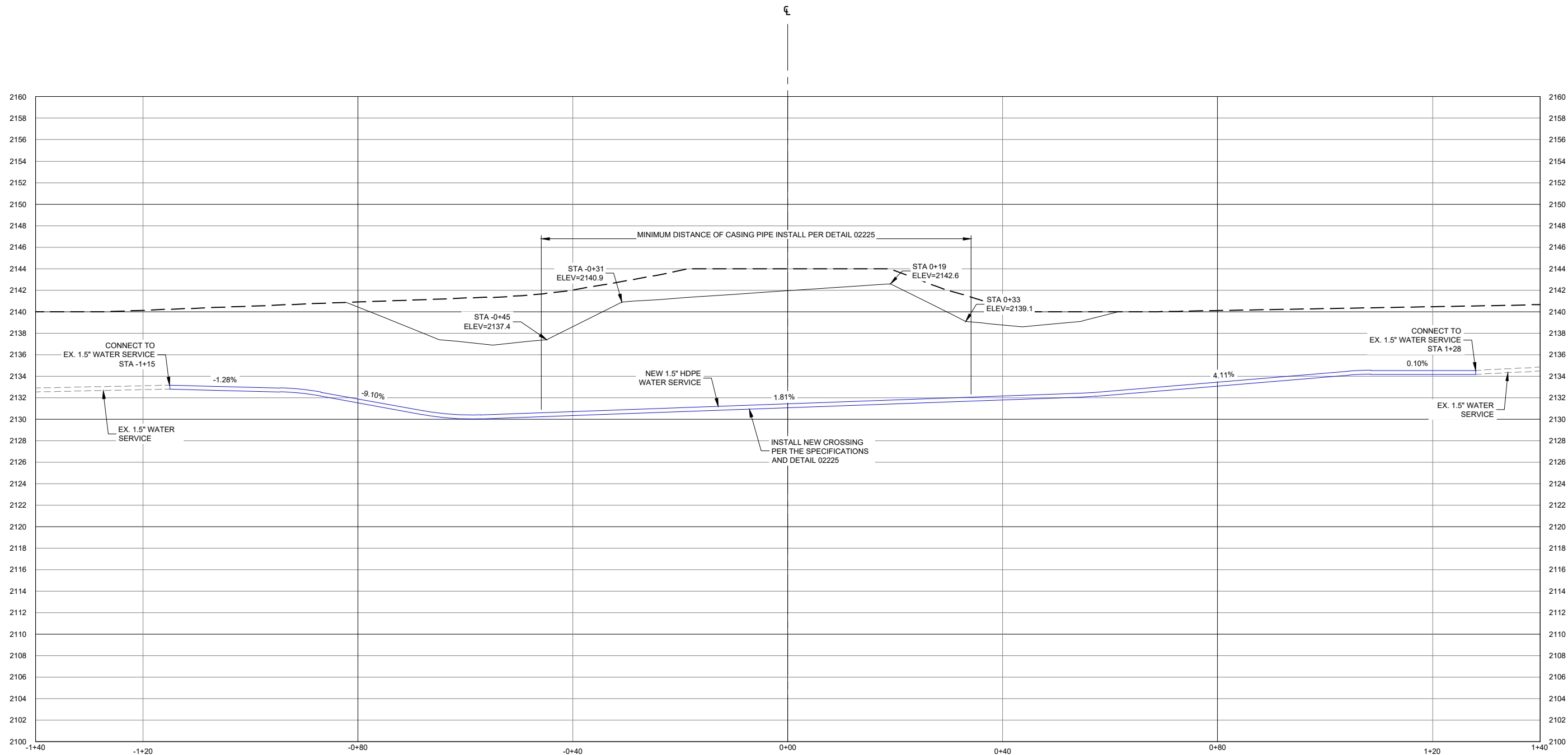
JACKSON COUNTY

PLAN AND PROFILE
STA 118+00 TO STA 123+00
STA 190+00 TO STA 208+00

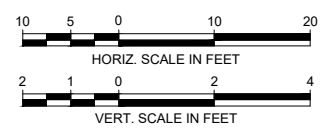
PROJECT NUMBER 2246.029.17
SHEET NUMBER 7
DRAWING NUMBER G-7

PLOTTED BY: LANE URICK ON Oct 10/2024

COPYRIGHT © MORRISON-MAIERLE, 2024



WATERLINE CROSSING STA 119+84



Q:\24\B\W\H\HIGHWAY 73 NORTH PIPELINE RELOCATIONS\ACAD\SHSHEET\029_X-SECTIONS.MDT.DWG

VERIFY SCALE!
 THESE PRINTS MAY BE REDUCED.
 LINE BELOW MEASURES ONE INCH
 ON ORIGINAL DRAWING.
 MODIFY SCALE ACCORDINGLY!
 PLOTTED BY:LANE URICK ON Oct/10/2024

| REVISIONS | | | |
|-----------|----------------|-----|------------|
| NO. | DESCRIPTION | BY | DATE |
| 1 | REV 10/09/2024 | MRK | 10/09/2024 |
| | | | |
| | | | |

Morrison Maierle
 engineers • surveyors • planners • scientists

1321 8th Ave. North, Suite 104
 Great Falls, MT 59401
 406.454.1513
 www.m-m.net

COPYRIGHT © MORRISON-MAIERLE, 2024

DRAWN BY: _____
 DSGN. BY: _____
 APPR. BY: _____
 DATE: 11/06/2023
 Q.C. REVIEW BY: _____
 DATE: _____

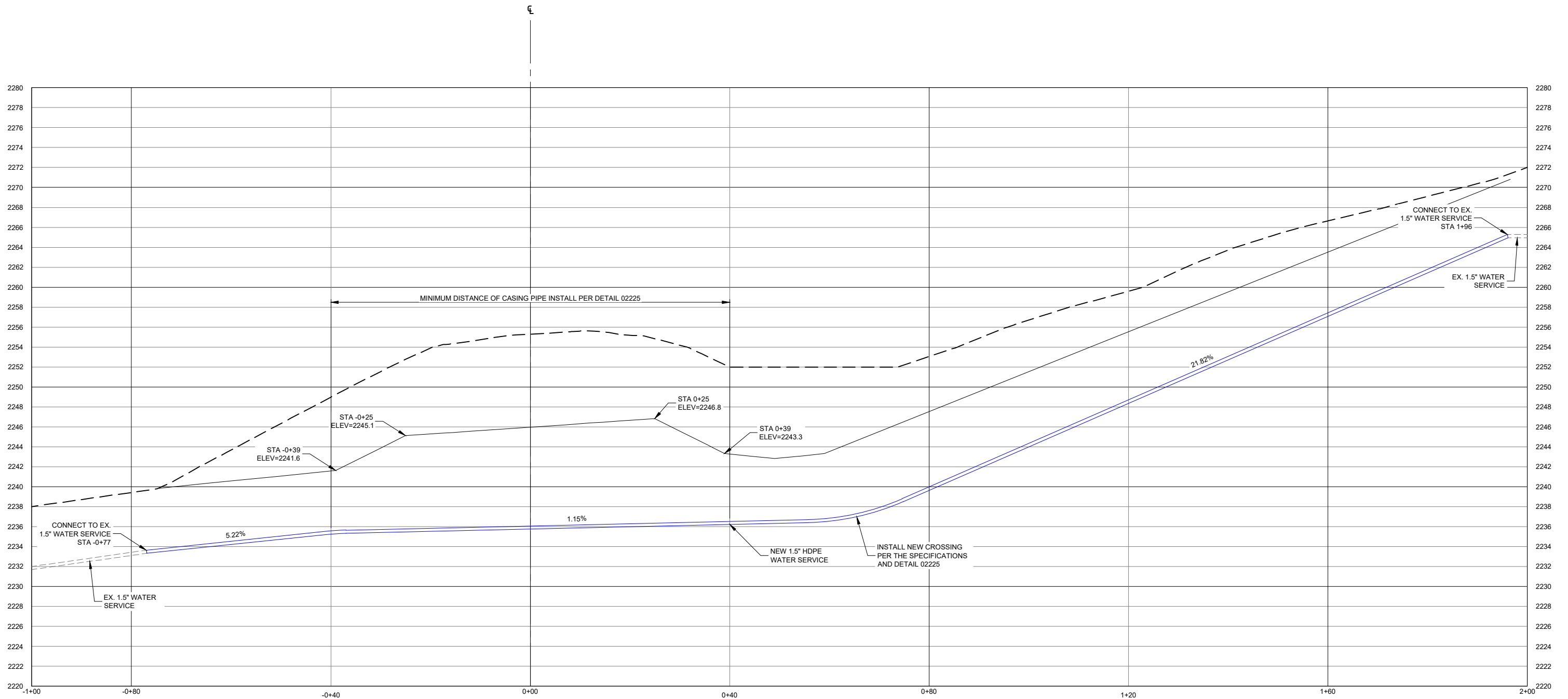
OGALA SIOUX TRIBE HWY 73 NORTH
 WATERLINE RELOCATIONS
 JACKSON COUNTY SOUTH DAKOTA

WATERLINE CROSSING
 STA 119+84

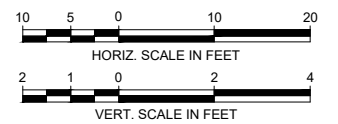
PROJECT NUMBER
2246.029.17

SHEET NUMBER
7A

DRAWING NUMBER
G-7A



WATERLINE CROSSING STA 190+38



Q:\24\B\HWY 73 NORTH PIPELINE RELOCATIONS\ACAD\SSHEETS\029_X-SECTIONS.MDT.DWG

| NO. | | DESCRIPTION | BY | DATE |
|-----|-----|-------------|-----|------------|
| 1 | REV | 10/09/2024 | MRK | 10/09/2024 |
| | | | | |
| | | | | |

VERIFY SCALE!
THESE PRINTS MAY BE REDUCED.
LINE BELOW MEASURES ONE INCH
ON ORIGINAL DRAWING.
MODIFY SCALE ACCORDINGLY!

Morrison Maierle
engineers • surveyors • planners • scientists

1321 8th Ave. North, Suite 104
Great Falls, MT 59401
406.454.1513
www.m-m.net

REGISTERED PROFESSIONAL ENGINEER
REG. NO. 05/18/2024
13037
MICHAEL R. KYNETT

COPYRIGHT © MORRISON-MAIERLE, 2024

DRAWN BY: _____
DSGN. BY: _____
APPR. BY: _____
DATE: 11/06/2023

Q.C. REVIEW
BY: _____
DATE: _____

OGALA SIOUX TRIBE HWY 73 NORTH
WATERLINE RELOCATIONS
SOUTH DAKOTA

JACKSON COUNTY

WATERLINE CROSSING
STA 190+38

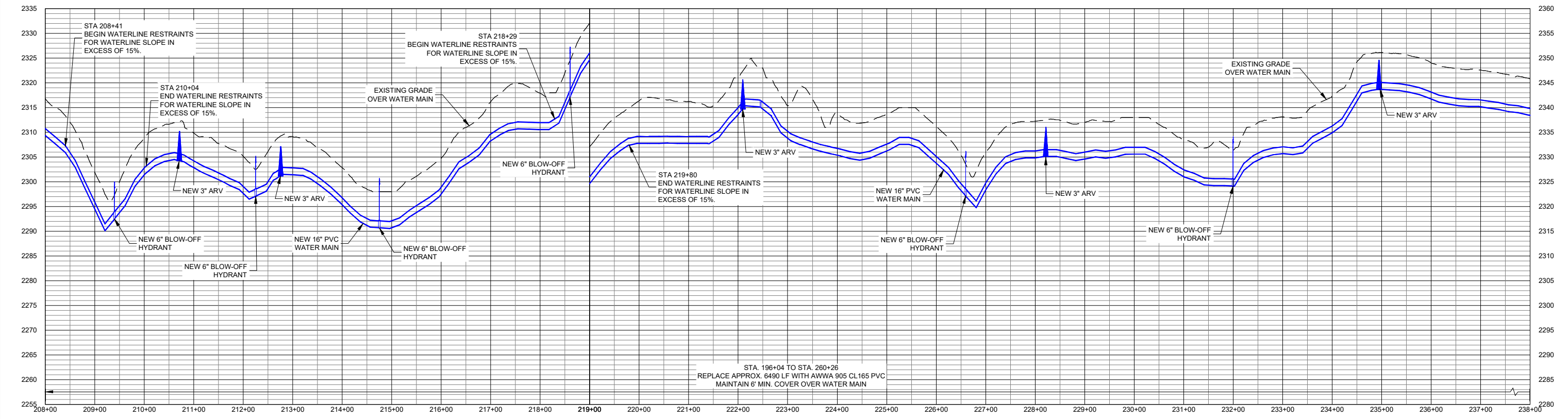
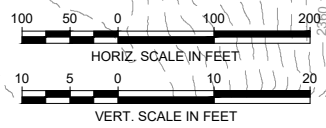
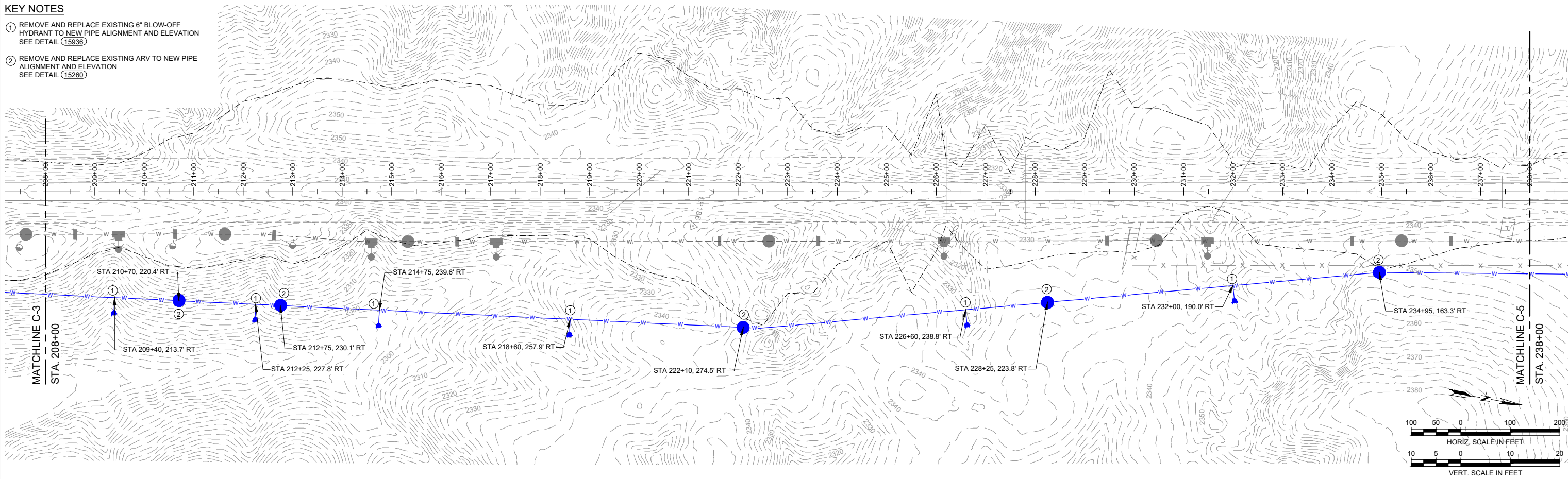
PROJECT NUMBER
2246.029.17

SHEET NUMBER
7B

DRAWING NUMBER
G-7B

KEY NOTES

- ① REMOVE AND REPLACE EXISTING 6" BLOW-OFF HYDRANT TO NEW PIPE ALIGNMENT AND ELEVATION SEE DETAIL (15936)
- ② REMOVE AND REPLACE EXISTING ARV TO NEW PIPE ALIGNMENT AND ELEVATION SEE DETAIL (15260)



Q:\248\HWY73 NORTH PIPELINE RELOCATIONS\CADD\SS\029_G-7 TO G-8.DWG

VERIFY SCALE!
THESE PRINTS MAY BE REDUCED.
LINE BELOW MEASURES ONE INCH
ON ORIGINAL DRAWING.
MODIFY SCALE ACCORDINGLY!
PLOTTED BY:LANE URICK ON Oct/10/2024

| REVISIONS | | | |
|-----------|----------------|-----|------------|
| NO. | DESCRIPTION | BY | DATE |
| 1 | REV 6/21/2024 | MRK | 6/21/2024 |
| 2 | REV 10/09/2024 | MRK | 10/09/2024 |

Morrison Maierle
engineers • surveyors • planners • scientists

1321 8th Ave. North, Suite 104
Great Falls, MT 59401
406.454.1513
www.m-m.net

REGISTERED PROFESSIONAL ENGINEER
STATE OF MONTANA
05/18/2024
13037
MICHAEL R. KYNETT

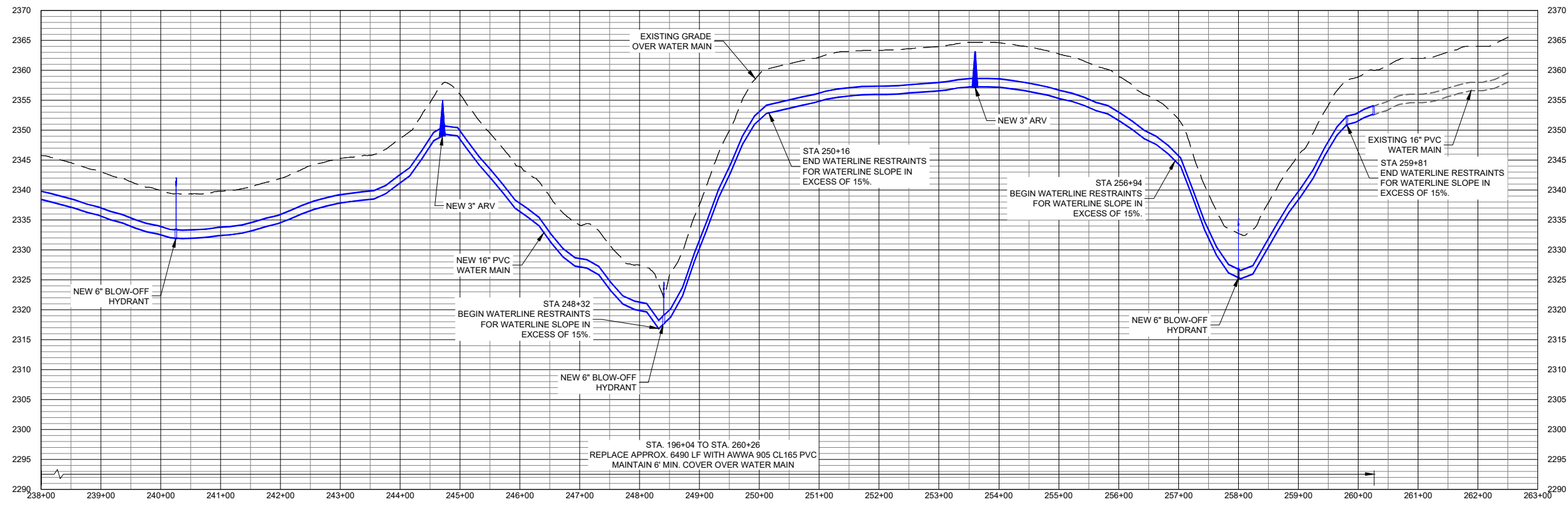
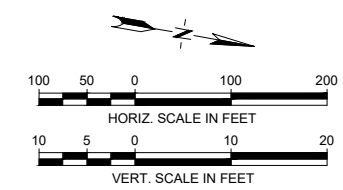
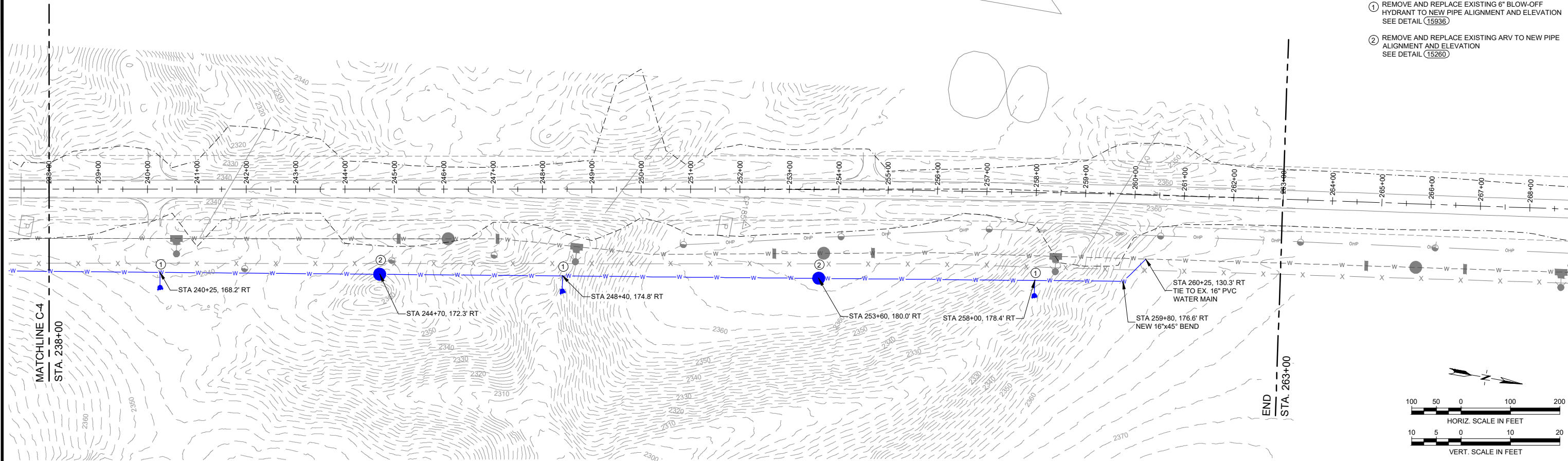
DRAWN BY: _____
DSGN. BY: _____
APPR. BY: _____
DATE: 11/06/2023
Q.C. REVIEW BY: _____
DATE: _____

JACKSON COUNTY
OGLALA SIOUX TRIBE HWY 73 NORTH
WATERLINE RELOCATIONS
SOUTH DAKOTA
PLAN AND PROFILE
STA 208+00 TO STA 238+00

PROJECT NUMBER
2246.029.17
SHEET NUMBER
8
DRAWING NUMBER
G-8

KEY NOTES

- ① REMOVE AND REPLACE EXISTING 6" BLOW-OFF HYDRANT TO NEW PIPE ALIGNMENT AND ELEVATION SEE DETAIL (15936)
- ② REMOVE AND REPLACE EXISTING ARV TO NEW PIPE ALIGNMENT AND ELEVATION SEE DETAIL (15280)



Q:\248\HWY73 NORTH PIPELINE RELOCATIONS\CAD\SHS\029_G-7 TO G-9.DWG

VERIFY SCALE!
 THESE PRINTS MAY BE REDUCED.
 LINE BELOW MEASURES ONE INCH
 ON ORIGINAL DRAWING.
 MODIFY SCALE ACCORDINGLY!
 PLOTTED BY:LANE URICK ON Oct/10/2024

| REVISIONS | | BY | DATE |
|-----------|----------------|-----|------------|
| NO. | DESCRIPTION | | |
| 1 | REV 10/09/2024 | MRK | 10/09/2024 |
| | | | |
| | | | |

Morrison Maierle
 engineers • surveyors • planners • scientists

1321 8th Ave. North, Suite 104
 Great Falls, MT 59401
 406.454.1513
 www.m-m.net

REGISTERED PROFESSIONAL ENGINEER
 REG. NO. 05/18/2024
 13037
 MICHAEL R. KYNETT
 SOUTH DAKOTA

DRAWN BY: _____
 DSGN. BY: _____
 APPR. BY: _____
 DATE: 11/06/2023

Q.C. REVIEW BY: _____
 DATE: _____

JACKSON COUNTY

OGALA SIOUX TRIBE HWY 73 NORTH
 WATERLINE RELOCATIONS

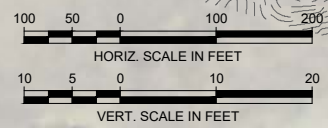
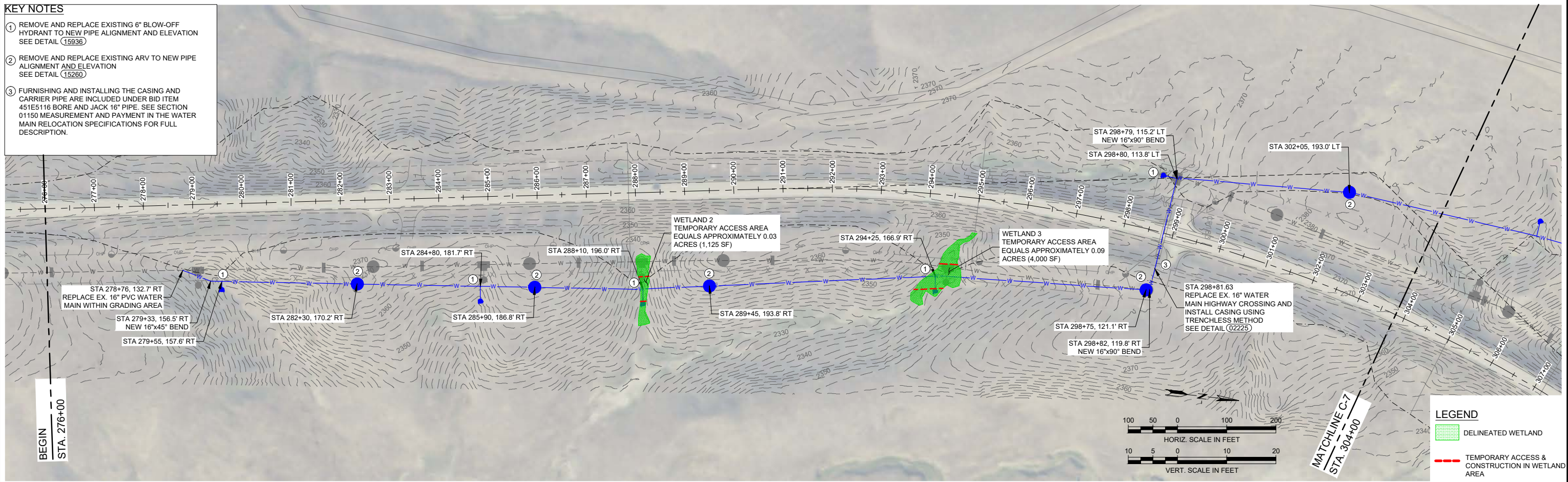
SOUTH DAKOTA

PLAN AND PROFILE
 STA 238+00 TO STA 263+00

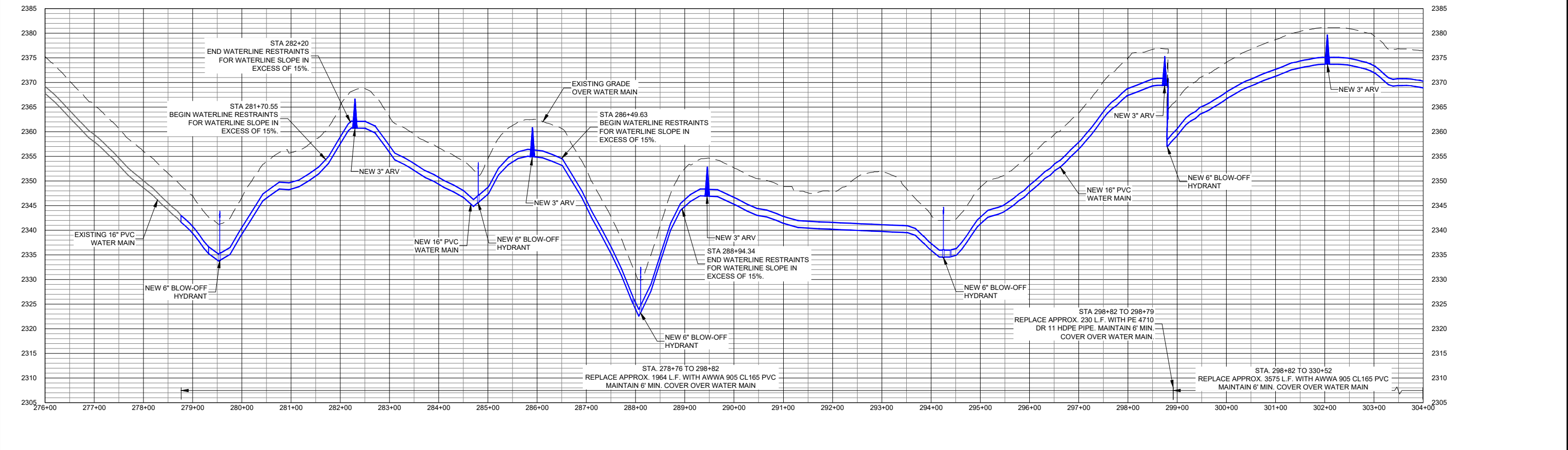
| |
|-------------------------------|
| PROJECT NUMBER 2246.029.17 |
| SHEET NUMBER 9 |
| DRAWING NUMBER G-9 |

COPYRIGHT © MORRISON-MAIERLE, 2024

- KEY NOTES**
- 1 REMOVE AND REPLACE EXISTING 6" BLOW-OFF HYDRANT TO NEW PIPE ALIGNMENT AND ELEVATION SEE DETAIL (15936)
 - 2 REMOVE AND REPLACE EXISTING ARV TO NEW PIPE ALIGNMENT AND ELEVATION SEE DETAIL (15260)
 - 3 FURNISHING AND INSTALLING THE CASING AND CARRIER PIPE ARE INCLUDED UNDER BID ITEM 451E5116 BORE AND JACK 16" PIPE. SEE SECTION 01150 MEASUREMENT AND PAYMENT IN THE WATER MAIN RELOCATION SPECIFICATIONS FOR FULL DESCRIPTION.



- LEGEND**
- DELINEATED WETLAND
 - TEMPORARY ACCESS & CONSTRUCTION IN WETLAND AREA



Q:\24\BIM\HIGHWAY 73 NORTH PIPELINE RELOCATIONS\CADD\SHETS\029_G-10 TO G-11.DWG

VERIFY SCALE!
THESE PRINTS MAY BE REDUCED.
LINE BELOW MEASURES ONE INCH
ON ORIGINAL DRAWING.
MODIFY SCALE ACCORDINGLY!
PLOTTED BY:LANE URICK ON Oct/10/2024

| REVISIONS | | | |
|-----------|----------------|-----|------------|
| NO. | DESCRIPTION | BY | DATE |
| 1 | REV 6/21/2024 | MRK | 6/21/2024 |
| 2 | REV 10/09/2024 | MRK | 10/09/2024 |

Morrison Maierle
engineers • surveyors • planners • scientists

1321 8th Ave. North, Suite 104
Great Falls, MT 59401
406.454.1513
www.m-m.net

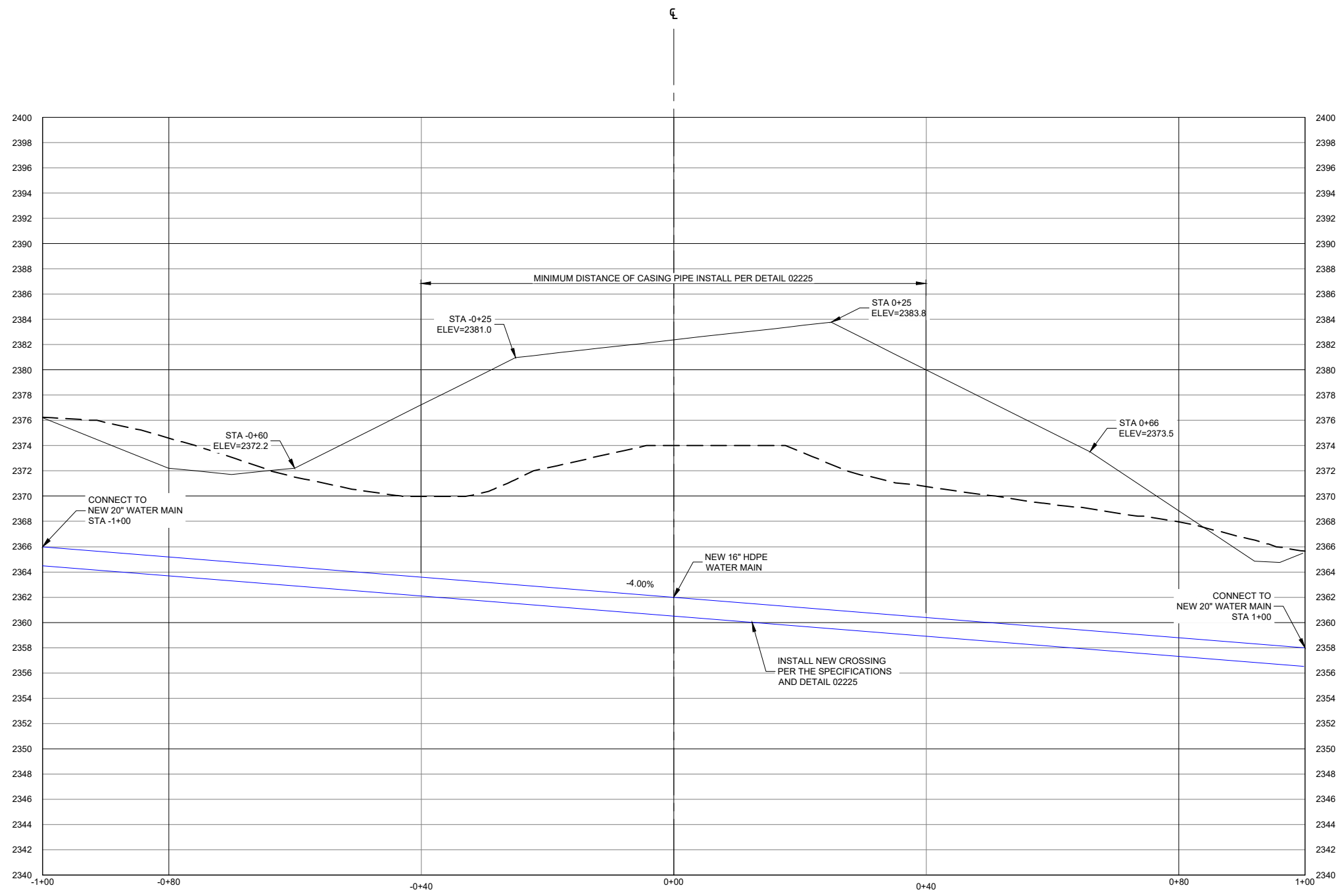
REGISTERED PROFESSIONAL ENGINEER
05/18/2024
13037
MICHAEL R. KYNETT

DRAWN BY: _____
DSGN. BY: _____
APPR. BY: _____
DATE: 11/06/2023
Q.C. REVIEW BY: _____
DATE: _____

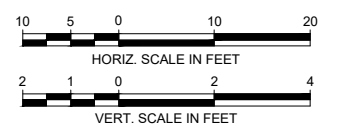
OGALA SIOUX TRIBE HWY 73 NORTH
WATERLINE RELOCATIONS
SOUTH DAKOTA

PLAN AND PROFILE
STA 276+00 TO STA 304+00

PROJECT NUMBER
2246.029.17
SHEET NUMBER
10
DRAWING NUMBER
G-10



WATERLINE CROSSING STA 298+82



Q:\24\B\W\H\H\73 NORTH PIPELINE RELOCATIONS\ACAD\SHR\TS\029_X-SECTIONS.MDT.DWG

VERIFY SCALE!
 THESE PRINTS MAY BE REDUCED.
 LINE BELOW MEASURES ONE INCH
 ON ORIGINAL DRAWING.
 ───────────
 MODIFY SCALE ACCORDINGLY!
 PLOTTED BY:LANE URICK ON Oct/10/2024

| REVISIONS | | | | |
|-----------|----------------|-----|------------|--|
| NO. | DESCRIPTION | BY | DATE | |
| 1 | REV 10/09/2024 | MRK | 10/09/2024 | |
| | | | | |
| | | | | |

1321 8th Ave. North, Suite 104
 Great Falls, MT 59401
 406.454.1513
 www.m-m.net

REGISTERED PROFESSIONAL ENGINEER
 STATE OF SOUTH DAKOTA
 05/18/2024
 13037
 MICHAEL R. KYNETT

DRAWN BY: _____
 DSGN. BY: _____
 APPR. BY: _____
 DATE: 11/06/2023

Q.C. REVIEW
 BY: _____
 DATE: _____

OGALA SIOUX TRIBE HWY 73 NORTH
 WATERLINE RELOCATIONS
 JACKSON COUNTY
 SOUTH DAKOTA

WATERLINE CROSSING
 STA 298+82

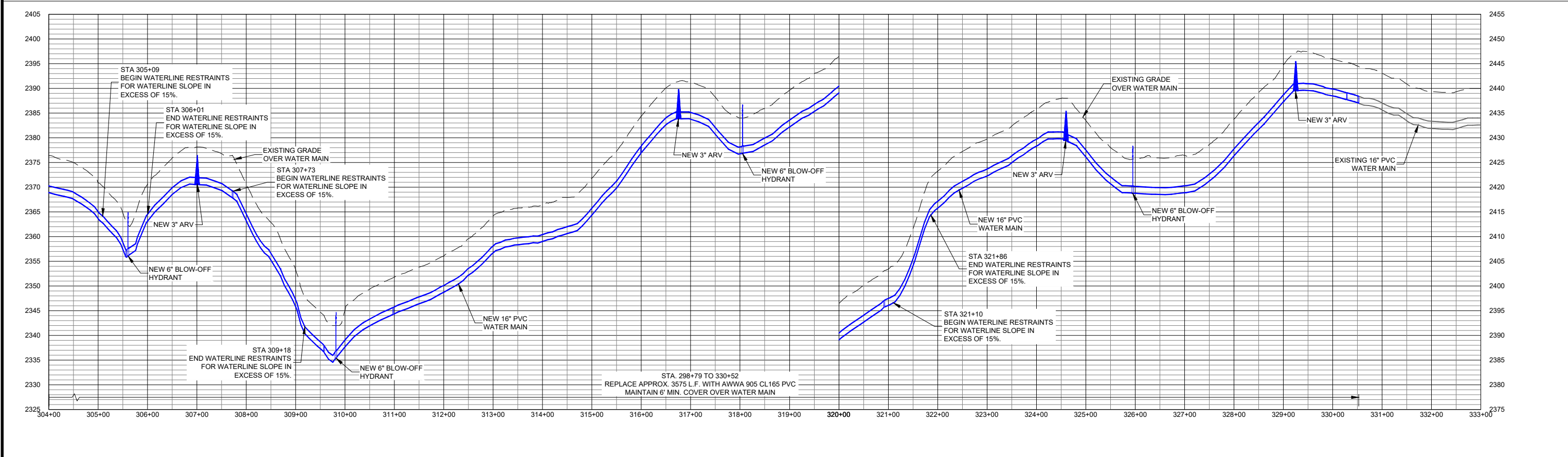
PROJECT NUMBER
2246.029.17

SHEET NUMBER
10A

DRAWING NUMBER
G-10A

KEY NOTES

- ① REMOVE AND REPLACE EXISTING 6" BLOW-OFF HYDRANT TO NEW PIPE ALIGNMENT AND ELEVATION SEE DETAIL (15936)
- ② REMOVE AND REPLACE EXISTING ARV TO NEW PIPE ALIGNMENT AND ELEVATION SEE DETAIL (15260)



G:\24\BIM\CH-HIGHWAY 73 NORTH PIPELINE RELOCATIONS\CADD\SHETS\029_G-10 TO G-11.DWG

VERIFY SCALE!
THESE PRINTS MAY BE REDUCED.
LINE BELOW MEASURES ONE INCH
ON ORIGINAL DRAWING.
MODIFY SCALE ACCORDINGLY!
PLOTTED BY:LANE URICK ON Oct/10/2024

| REVISIONS | | | |
|-----------|----------------|-----|------------|
| NO. | DESCRIPTION | BY | DATE |
| 1 | REV 6/21/2024 | MRK | 6/21/2024 |
| 2 | REV 10/09/2024 | MRK | 10/09/2024 |

Morrison Maierle
engineers • surveyors • planners • scientists

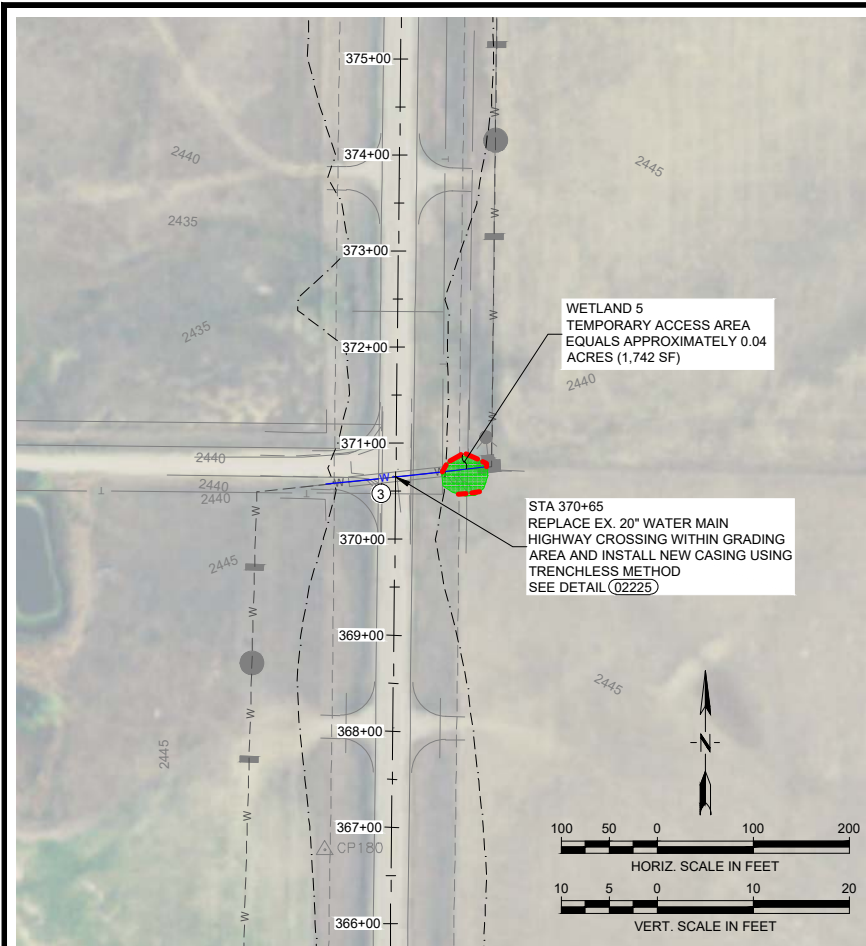
1321 8th Ave. North, Suite 104
Great Falls, MT 59401
406.454.1513
www.m-m.net

REGISTERED PROFESSIONAL ENGINEER
STATE OF MONTANA
05/18/2024
13037
MICHAEL R. KYNETT

DRAWN BY: _____
DSGN. BY: _____
APPR. BY: _____
DATE: 11/06/2023
Q.C. REVIEW BY: _____
DATE: _____

JACKSON COUNTY
OGLALA SIOUX TRIBE HWY 73 NORTH
WATERLINE RELOCATIONS
SOUTH DAKOTA
PLAN AND PROFILE
STA 304+00 TO STA 333+00

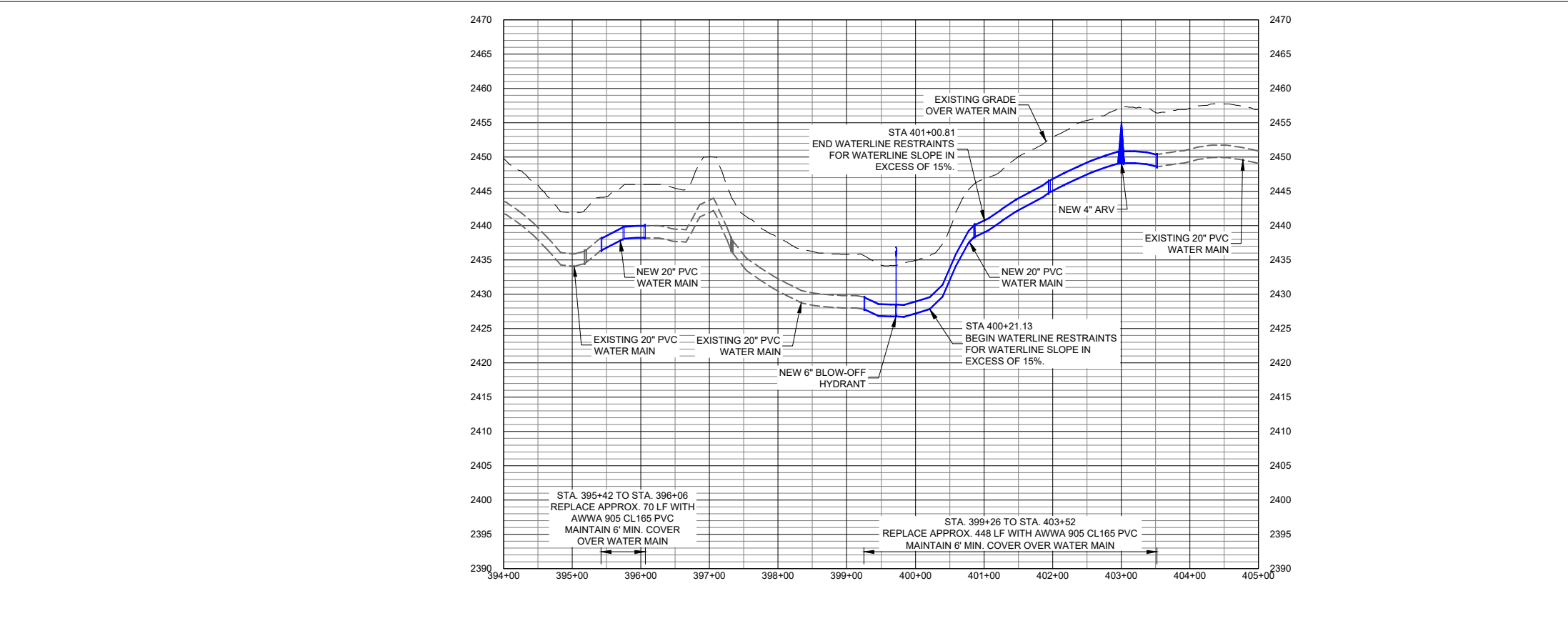
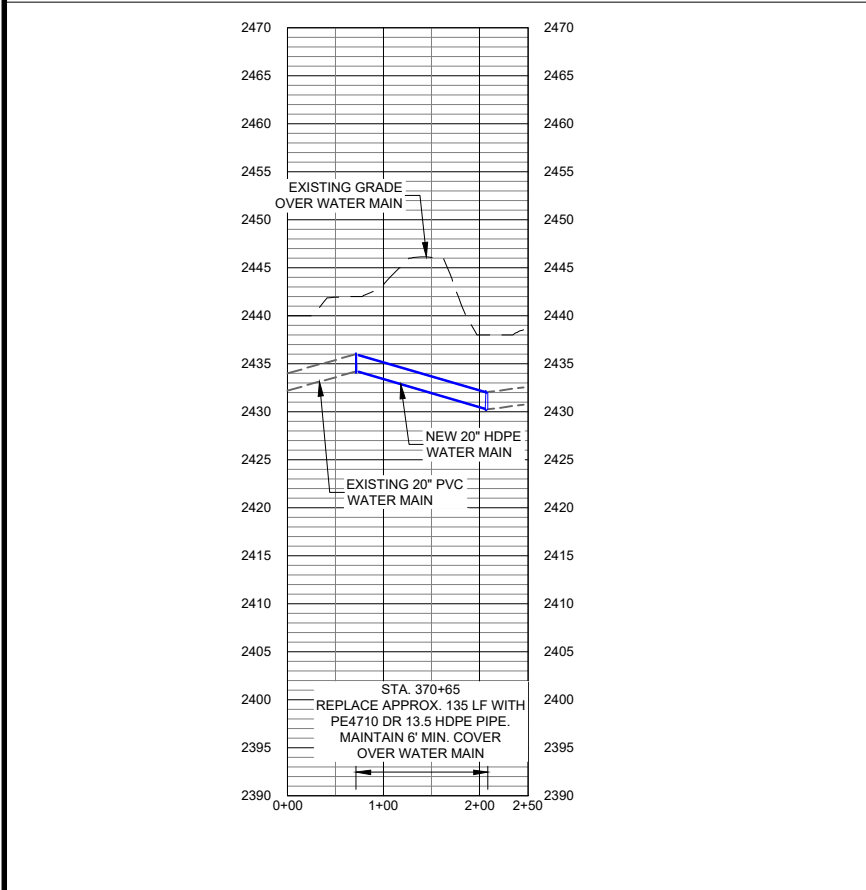
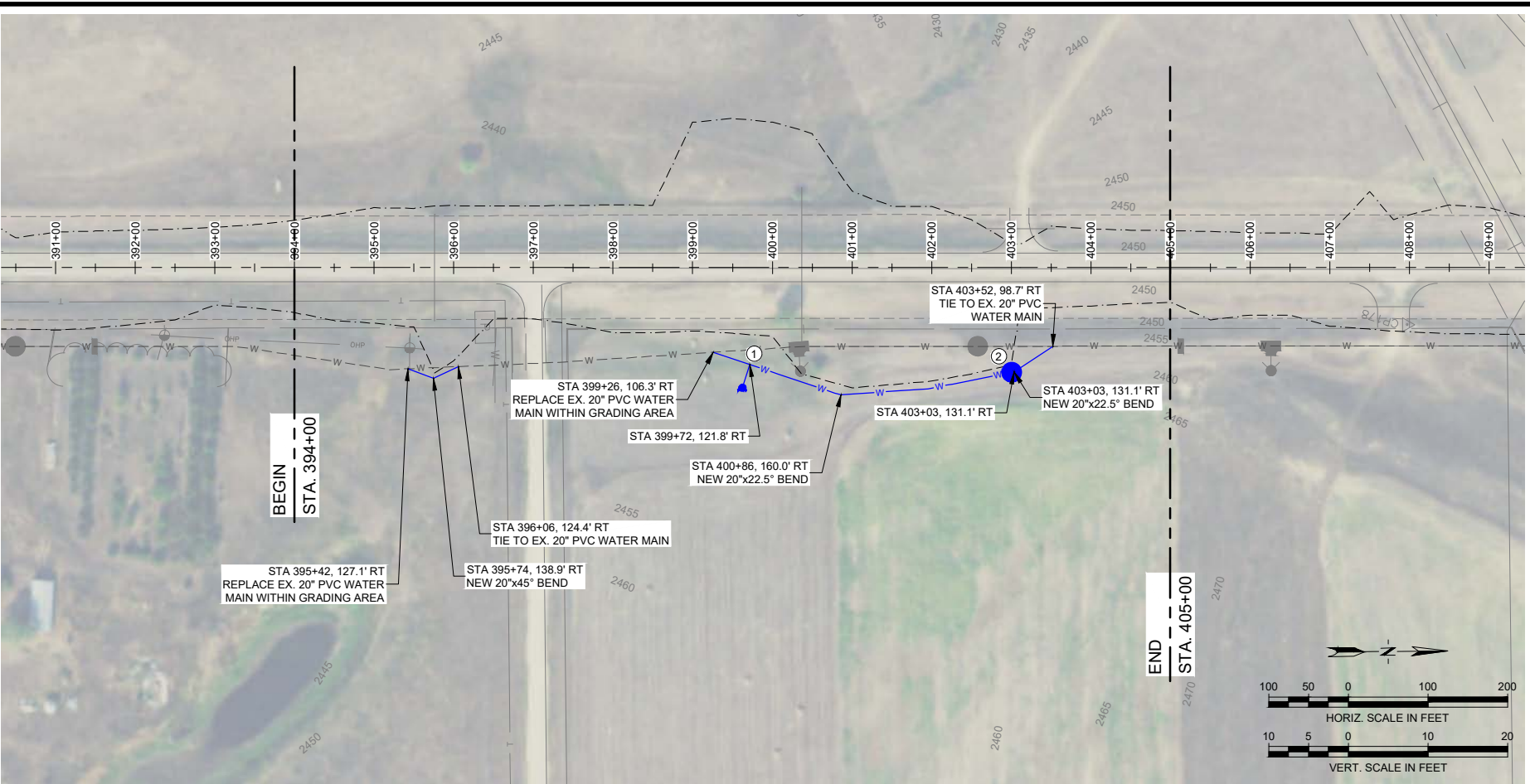
PROJECT NUMBER
2246.029.17
SHEET NUMBER
11
DRAWING NUMBER
G-11



- KEY NOTES**
- 1 REMOVE AND REPLACE EXISTING 6" BLOW-OFF HYDRANT TO NEW PIPE ALIGNMENT AND ELEVATION SEE DETAIL (15936)
 - 2 REMOVE AND REPLACE EXISTING ARV TO NEW PIPE ALIGNMENT AND ELEVATION SEE DETAIL (15260)
 - 3 FURNISHING AND INSTALLING THE CASING AND CARRIER PIPE ARE INCLUDED UNDER BID ITEM 451E5120 BORE AND JACK 20" PIPE. SEE SECTION 01150 MEASUREMENT AND PAYMENT TO THE WATER MAIN RELOCATION SPECIFICATIONS FOR FULL DESCRIPTION.

LEGEND

- DELINEATED WETLAND
- TEMPORARY ACCESS & CONSTRUCTION IN WETLAND AREA



VERIFY SCALE!

THESE PRINTS MAY BE REDUCED. LINE BELOW MEASURES ONE INCH ON ORIGINAL DRAWING.

MODIFY SCALE ACCORDINGLY!

| REVISIONS | | | |
|-----------|----------------|-----|------------|
| NO. | DESCRIPTION | BY | DATE |
| 1 | REV 6/21/2024 | MRK | 6/21/2024 |
| 2 | REV 10/09/2024 | MRK | 10/09/2024 |

engineers • surveyors • planners • scientists

1321 8th Ave. North, Suite 104
Great Falls, MT 59401
406.454.1513
www.m-m.net

DRAWN BY: _____
DSGN. BY: _____
APPR. BY: _____
DATE: 11/06/2023
Q.C. REVIEW BY: _____
DATE: _____

OGDLA SIOUX TRIBE HWY 73 NORTH
WATERLINE RELOCATIONS
SOUTH DAKOTA

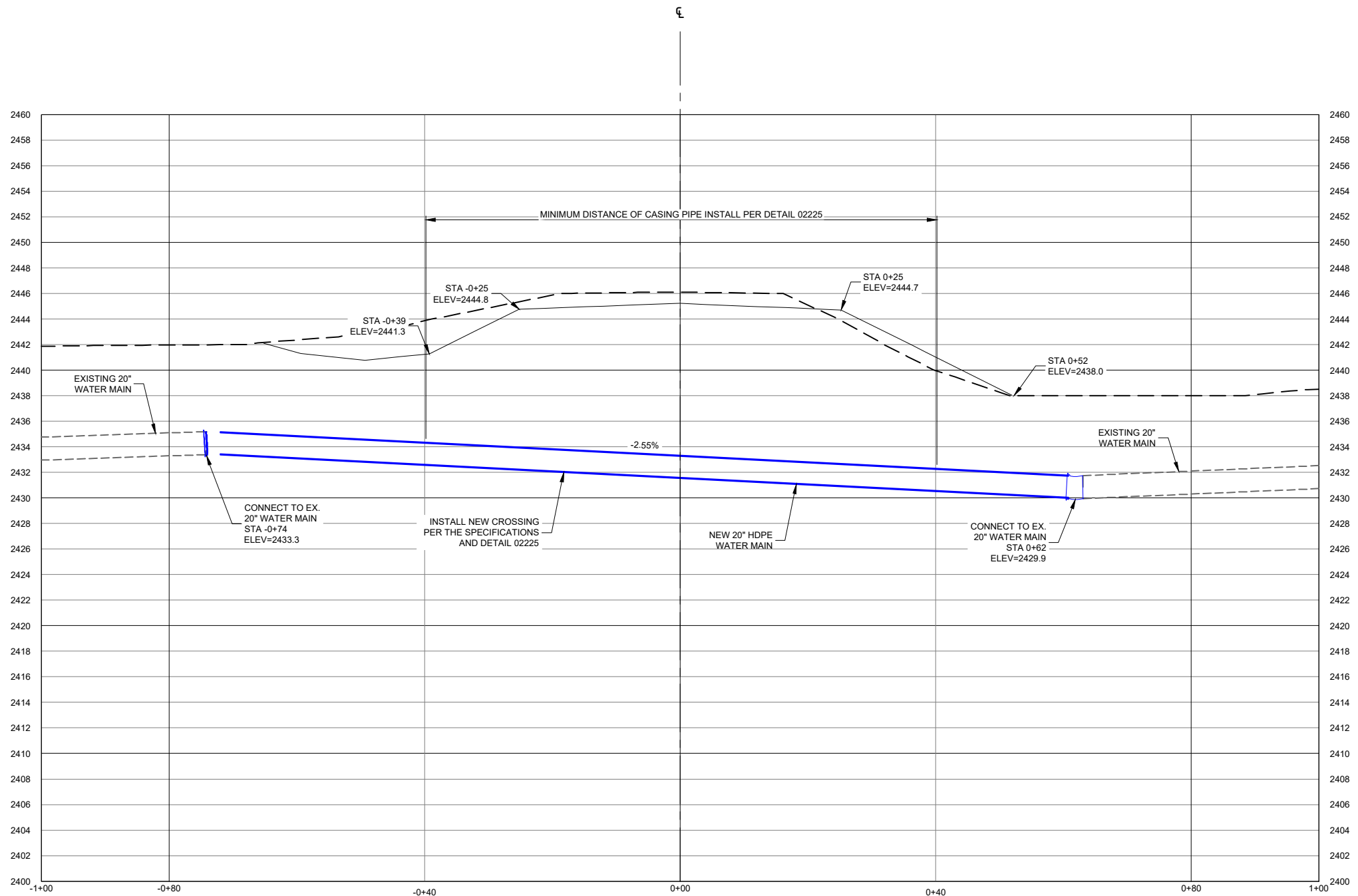
PLAN AND PROFILE
STA 366+00 TO STA 375+00
STA 394+00 TO STA 405+00

PROJECT NUMBER
2246.029.17
SHEET NUMBER
12
DRAWING NUMBER
G-12

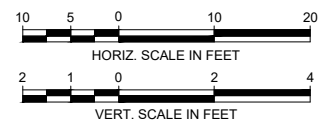
COPYRIGHT © MORRISON-MAIERLE, 2024

G:\2246\HWY73 NORTH PIPELINE RELOCATIONS\ACAD\SSHEETS\029_G-12.DWG

PLOTTED BY:LANE URICK ON Oct/10/2024



WATERLINE CROSSING STA 370+65



Q:\246\HWY3\HIGHWAY 73 NORTH PIPELINE RELOCATIONS\ACAD\SHS\029_X-SECTIONS.MDT.DWG

| NO. | | DESCRIPTION | BY | DATE |
|---|-----|-------------|-----|------------|
| 1 | REV | 10/09/2024 | MRK | 10/09/2024 |
| VERIFY SCALE! THESE PRINTS MAY BE REDUCED. LINE BELOW MEASURES ONE INCH ON ORIGINAL DRAWING. ─────────── MODIFY SCALE ACCORDINGLY! | | | | |

1321 8th Ave. North, Suite 104
Great Falls, MT 59401
406.454.1513
www.m-m.net

COPYRIGHT © MORRISON-MAIERLE, 2024

REGISTERED PROFESSIONAL ENGINEER
 STATE OF SOUTH DAKOTA
 NO. 13037
 05/18/2024
 MICHAEL R. KYNETT

DRAWN BY: _____
 DSGN. BY: _____
 APPR. BY: _____
 DATE: 11/06/2023

Q.C. REVIEW BY: _____
 DATE: _____

OGALA SIOUX TRIBE HWY 73 NORTH
 WATERLINE RELOCATIONS
 JACKSON COUNTY
 SOUTH DAKOTA

WATERLINE CROSSING
 STA 370+65

PROJECT NUMBER
2246.029.17

SHEET NUMBER
12A

DRAWING NUMBER
G-12A

Plotting Date: 10/10/2024
Rev 10/10/2024 RU

| STATE OF SOUTH DAKOTA | PROJECT | SHEET | TOTAL SHEETS |
|-----------------------|--------------------------------|-------|--------------|
| | NH 0073(73)62 P 0248(17)162 | Z28 | Z32 |

