

November 27, 2024

**ADDENDUM NO. 1**

**RE: Item #9, December 4, 2024 Letting - PT 0014(238)203, PCN 06X7, Stanley County - Slide Repair, Erosion Control, Pipe Work**

**TO WHOM IT MAY CONCERN:**

The following addenda to the plans shall be inserted and made a part of your proposal for the referenced project.

**SPECIAL PROVISIONS:** NO CHANGE

**SDEBS BID PROPOSAL:** *The electronic bid proposal for this contract has been revised to include the changes associated with this addendum. Bidders must log in to the SDEBS to retrieve and incorporate these changes into their bid.*

**Quantities for Bid Items were changed:**

Bid Item 450E4788 "36" CMP 14 Gauge, Furnish" changed from 368 to 386 Ft

Bid Item 450E4790 "36" CMP, Install" changed from 368 to 386 Ft

Bid Item 450E5025 "36" CMP Elbow, Furnish" changed from 5 to 6 Each

Bid Item 450E5026 "36" CMP Elbow, Install" changed from 5 to 6 Each

**PLANS:** Please destroy sheets 2, 12, 35, 63, 64, and 65 and replace with the enclosed sheets, dated 11/26/24 and 11/27/24.

**Sheet 2:** **Quantities for Bid Items were changed:**

Bid Item 450E4788 "36" CMP 14 Gauge, Furnish" changed from 368 to 386 Ft

Bid Item 450E4790 "36" CMP, Install" changed from 368 to 386 Ft

Bid Item 450E5025 "36" CMP Elbow, Furnish" changed from 5 to 6 Each

Bid Item 450E5026 "36" CMP Elbow, Install" changed from 5 to 6 Each

**Sheet 12:** TABLE OF PIPE/GRADING QUANTITIES was revised.

**Sheet 35:** Install Notes for Sta 202+24 to 202+11 and Sta 209+99 to 210+25 were revised.

**Sheets 63 & 64:** Details were revised to show the location of elbows.

**Sheet 65:** Station 209+99 to 210+25-R was revised and details were revised to show the location of each elbow.

Sincerely,

Sam Weisgram  
Engineering Supervisor

SW/cj

CC: Jason Humphrey, Pierre Region Engineer  
Dean VanDeWiele, Pierre Area Engineer

Revised: 11-27-24 EJW

**ESTIMATE OF QUANTITIES**

BID ITEM NUMBER	ITEM	QUANTITY	UNIT
009E0010	Mobilization	Lump Sum	LS
110E0600	Remove Fence	3,100	Ft
110E1690	Remove Sediment	3.9	CuYd
110E1700	Remove Silt Fence	490	Ft
110E7500	Remove Pipe for Reset	16	Ft
110E7510	Remove Pipe End Section for Reset	2	Each
120E0600	Contractor Furnished Borrow	7,232	CuYd
120E4100	Reprofiling Ditch	0.5	Sta
230E0100	Remove and Replace Topsoil	Lump Sum	LS
250E0020	Incidental Work, Grading	Lump Sum	LS
450E0142	24" RCP Class 2, Furnish	20	Ft
450E0150	24" RCP, Install	20	Ft
450E0192	42" RCP Class 2, Furnish	8	Ft
450E0200	42" RCP, Install	8	Ft
450E4768	24" CMP 14 Gauge, Furnish	48	Ft
450E4770	24" CMP, Install	48	Ft
450E4778	30" CMP 14 Gauge, Furnish	352	Ft
450E4780	30" CMP, Install	352	Ft
450E4788	36" CMP 14 Gauge, Furnish	386	Ft
450E4790	36" CMP, Install	386	Ft
450E4798	42" CMP 14 Gauge, Furnish	40	Ft
450E4800	42" CMP, Install	40	Ft
450E5015	24" CMP Elbow, Furnish	2	Each
450E5016	24" CMP Elbow, Install	2	Each
450E5020	30" CMP Elbow, Furnish	4	Each
450E5021	30" CMP Elbow, Install	4	Each
450E5025	36" CMP Elbow, Furnish	6	Each
450E5026	36" CMP Elbow, Install	6	Each
450E5030	42" CMP Elbow, Furnish	2	Each
450E5031	42" CMP Elbow, Install	2	Each
450E5215	24" CMP Flared End, Furnish	1	Each
450E5216	24" CMP Flared End, Install	1	Each
450E5219	30" CMP Flared End, Furnish	6	Each
450E5220	30" CMP Flared End, Install	6	Each
450E5223	36" CMP Flared End, Furnish	5	Each
450E5224	36" CMP Flared End, Install	5	Each
450E5227	42" CMP Flared End, Furnish	1	Each
450E5228	42" CMP Flared End, Install	1	Each
450E7630	30" Steel Pipe, Furnish	290	Ft
450E8014	24" RCP to CMP Transition, Furnish	1	Each
450E8015	24" Pipe Transition, Install	1	Each
450E8029	42" RCP to CMP Transition, Furnish	1	Each
450E8030	42" Pipe Transition, Install	1	Each

BID ITEM NUMBER	ITEM	QUANTITY	UNIT
450E8300	Culvert Joint Cleaning	204.0	Ft
450E8305	Repair Culvert Joint	204.0	Ft
450E8310	Chemical Grout Void Fill	10.0	Gal
450E9000	Reset Pipe	16	Ft
450E9001	Reset Pipe End Section	2	Each
451E5130	Bore and Jack 30" Pipe	290	Ft
462E0250	Cellular Grout	48.2	CuYd
600E0200	Type II Field Laboratory	1	Each
620E0020	Type 2 Right-of-Way Fence	3,100	Ft
620E0515	Type 1A Temporary Fence	4,817	Ft
620E1020	2 Post Panel	22	Each
620E1030	3 Post Panel	2	Each
632E2510	Type 2 Object Marker Back to Back	4	Each
634E0010	Flagging	40.0	Hour
634E0110	Traffic Control Signs	242.0	SqFt
634E0120	Traffic Control, Miscellaneous	Lump Sum	LS
700E0210	Class B Riprap	1,539.2	Ton
730E1200	Hydroseeding	15,342	SqYd
732E0200	Fiber Mulching	4.9	Ton
734E0103	Type 3 Erosion Control Blanket	14,436	SqYd
734E0132	Type 2 Turf Reinforcement Mat	228.0	SqYd
734E0154	12" Diameter Erosion Control Wattle	1,728	Ft
734E0165	Remove and Reset Erosion Control Wattle	441	Ft
734E0400	Rock Check Dam	110.3	CuYd
734E0510	Shaping for Erosion Control Blanket	1,750	Ft
734E0604	High Flow Silt Fence	1,960	Ft
734E0610	Mucking Silt Fence	136	CuYd
734E0620	Repair Silt Fence	490	Ft
831E0110	Type B Drainage Fabric	1,730	SqYd

**SPECIFICATIONS**

Standard Specifications for Roads and Bridges, 2015 Edition and Required Provisions, Supplemental Specifications, and Special Provisions as included in the Proposal.





202+24 - 94' R  
Remove 44' of Existing Culvert  
(Incidental Work, Grading)

202+24-94' R to 202+11-140' R  
Install 42"-8' RCP  
42"-40' CMP (20' & 20')  
Skewed 16° LHF  
1-RCP to CMP Transition  
1-27.5° Elbow  
1-25.0° Elbow  
1-CMP Flared End

210+19 - 77' R to 210+24 - 62' R  
Remove 15' of Existing 36" RCP  
& 1 Flared End Section  
(Incidental Work, Grading)

209+99-103' R to 210+25-62' R  
Install 36"-44' CMP  
Skewed 40° LHF  
2-20° Elbows  
1-CMP Flared End

210+24 - 85' R to 210+69 - 60' R  
Remove 52' of Existing 30" RCP  
& 2 Flared End Sections  
(Incidental Work, Grading)

210+09-109' R to 210+72-60' R  
Install 30"-76' CMP (36' & 30' & 10')  
1-15.0° Elbow  
1-12.5° Elbow  
2-CMP Flared Ends

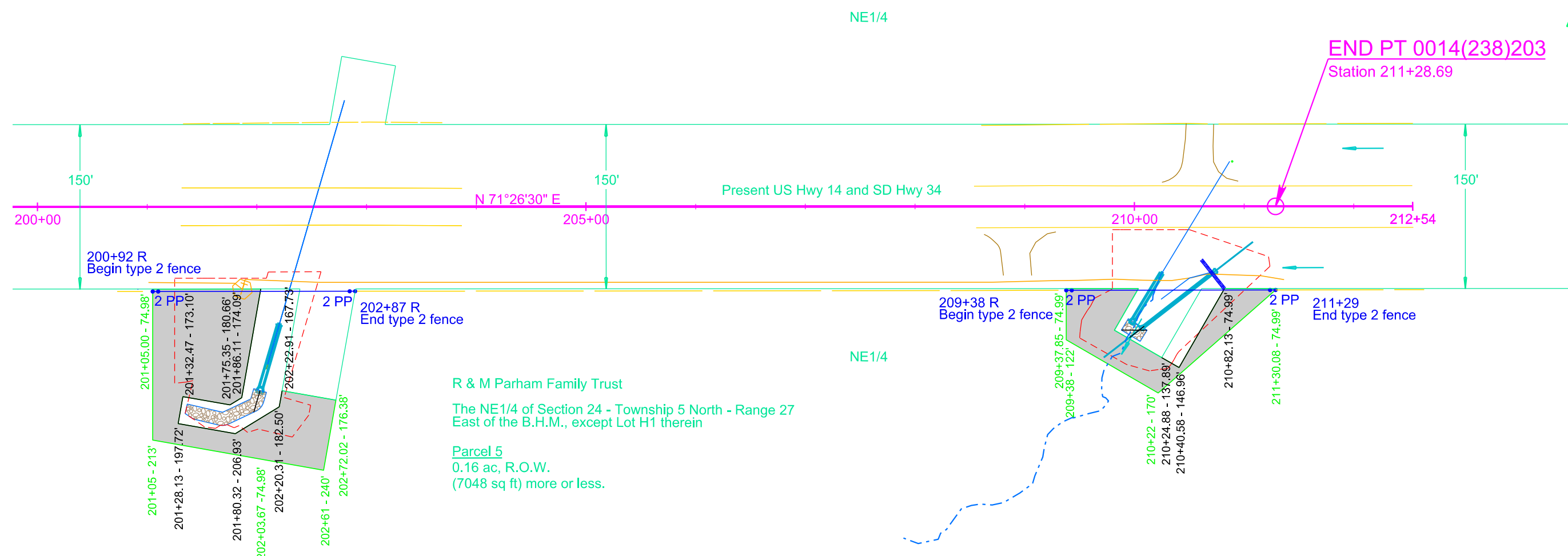
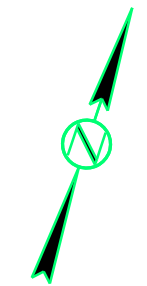
210+00 - 113' R  
Install Class B Riprap  
(31.1 Ton - See Riprap Detail for Site 10)  
Install Type B Drainage Fabric  
(44.4 SqYd)

210+61 - 49' R to 210+82 - 75' R  
Install Ditch Block  
(11 CuYd)

201+72 - 193' R  
Install Class B Riprap  
(123.1 Ton - See Riprap Detail for Site 9)  
Install Type B Drainage Fabric  
(156.1 SqYd)

210+22 R  
Install Fence Berm

Site 9  
MRM 206.00+0.208  
Site 10  
MRM 206.00+0.335

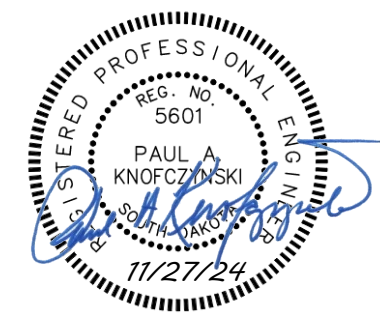


R & M Parham Family Trust  
The NE1/4 of Section 24 - Township 5 North - Range 27  
East of the B.H.M., except Lot H1 therein  
Parcel 5  
0.16 ac, R.O.W.  
(7048 sq ft) more or less.

Sec 24 - T5N - R27E

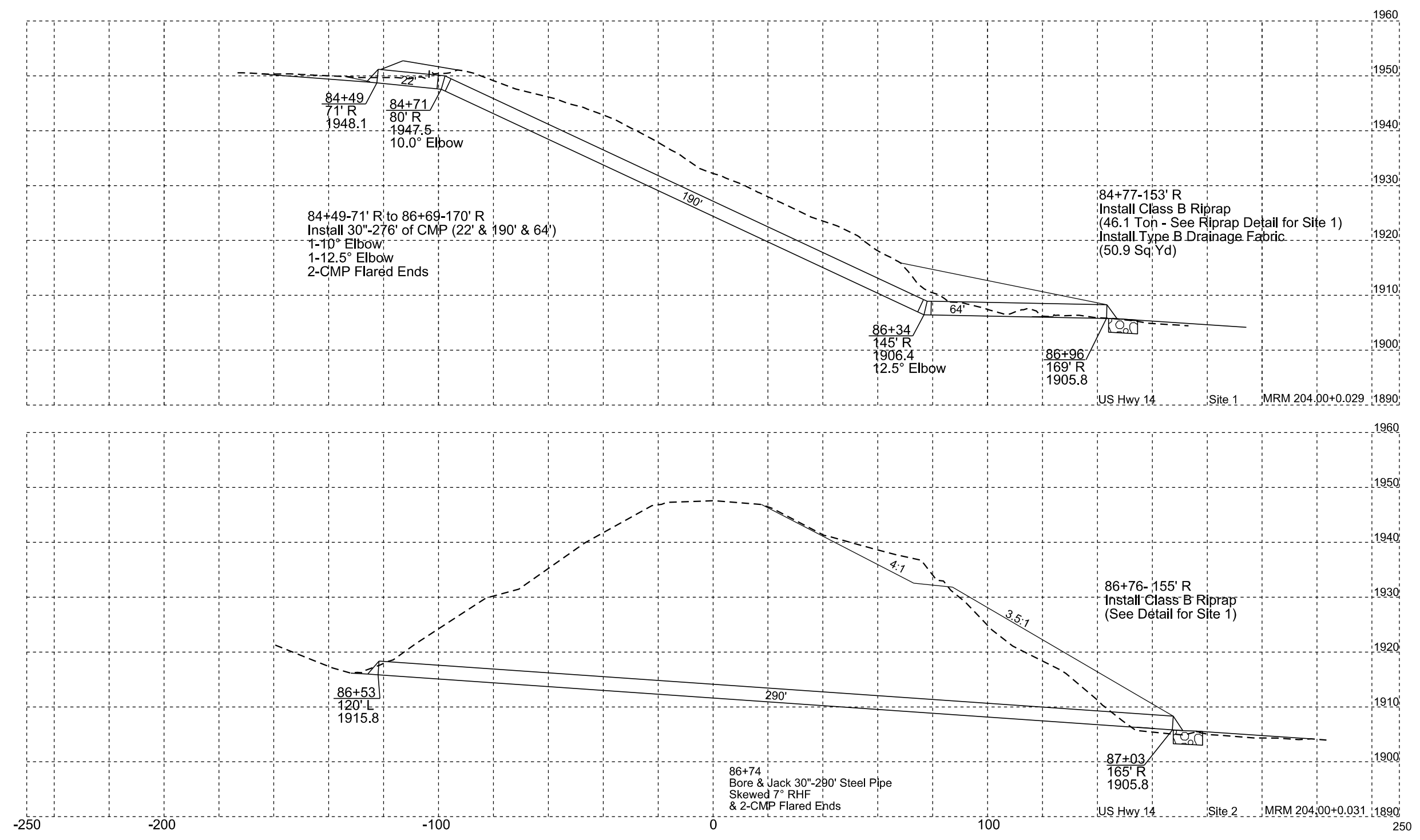
Parcel 5  
201+05.00 to 202+72.02 R  
Temporary Easement containing  
0.4 ac, more or less

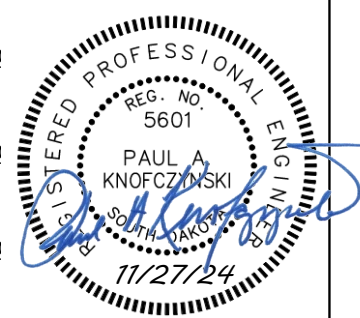
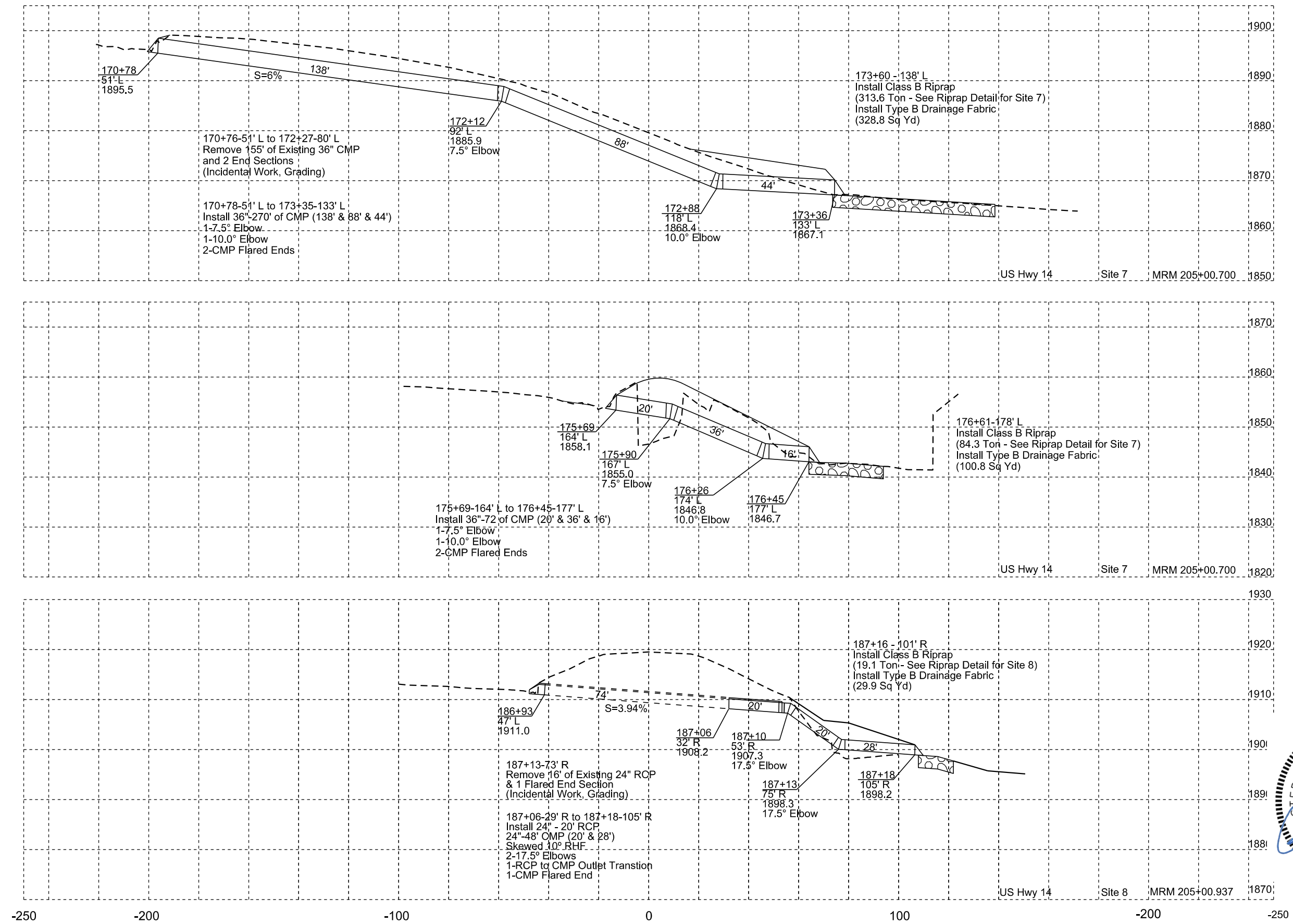
Parcel 5  
209+37.85 to 211+30.08 R  
Temporary Easement containing  
0.2 ac, more or less



Plotted From - EvanWolf  
 Plot Scale - 1:100.026  
 File - ...Plans\Sections\plan197.dgn

Plotted From: EvenWolf Plot Scale: 1:40





Plot Scale - 1:40

Plotted From - EvenWolf

File - ...CAD\Design\Plans\p06X7.dgn





STATE OF SOUTH DAKOTA

PROJECT

PT 0014(238)203

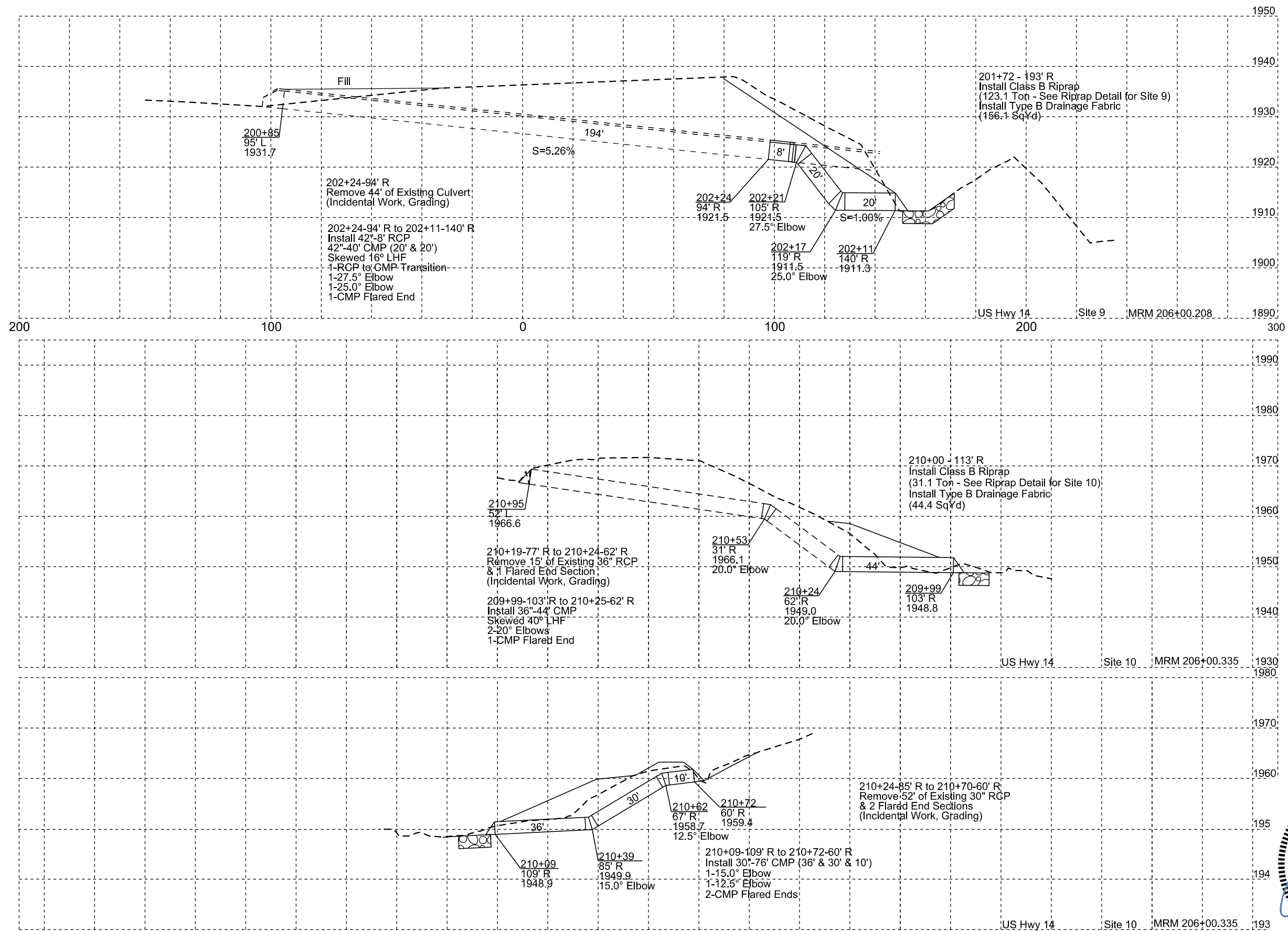
SHEET

65

TOTAL SHEETS

65

Plotting Date: 11/26/2024



Plot Scale - 1:40

Plotted From - EvanWolf

File - ...CADesign\Plans\p06X7.dgn

