



Planning & Engineering
Office of Project Development
700 E Broadway Avenue
Pierre, South Dakota 57501-2586
O: 605.773.3275 | F: 605.773.2614
dot.sd.gov

October 7, 2024

ADDENDUM NO. 1

**RE: Item #3, October 16, 2024 Letting - BRO-B 8052(77), PCN 08N3, Pennington County -
Structure (80' Prestressed Girder Bridge) & Approach Grading**

TO WHOM IT MAY CONCERN:

The following addenda to the plans shall be inserted and made a part of your proposal for the referenced project.

SPECIAL PROVISIONS: NO CHANGE

SDEBS BID PROPOSAL: NO CHANGE

PLANS: Please destroy sheet 40 and replace with the enclosed sheets, dated 9/25/24.

Sheet 40: Informational Item 4 was revised. Type B Drainage Fabric changed from 64 to 187 SqYd. Type B Drainage Fabric note was added to SEC. A-A and DETAIL "X".

Sincerely,

Sam Weisgram
Engineering Supervisor

SW/cj

CC: Todd Seaman, Rapid City Region Engineer
Mike Carlson, Rapid City Area Engineer

Revised
9-25-24

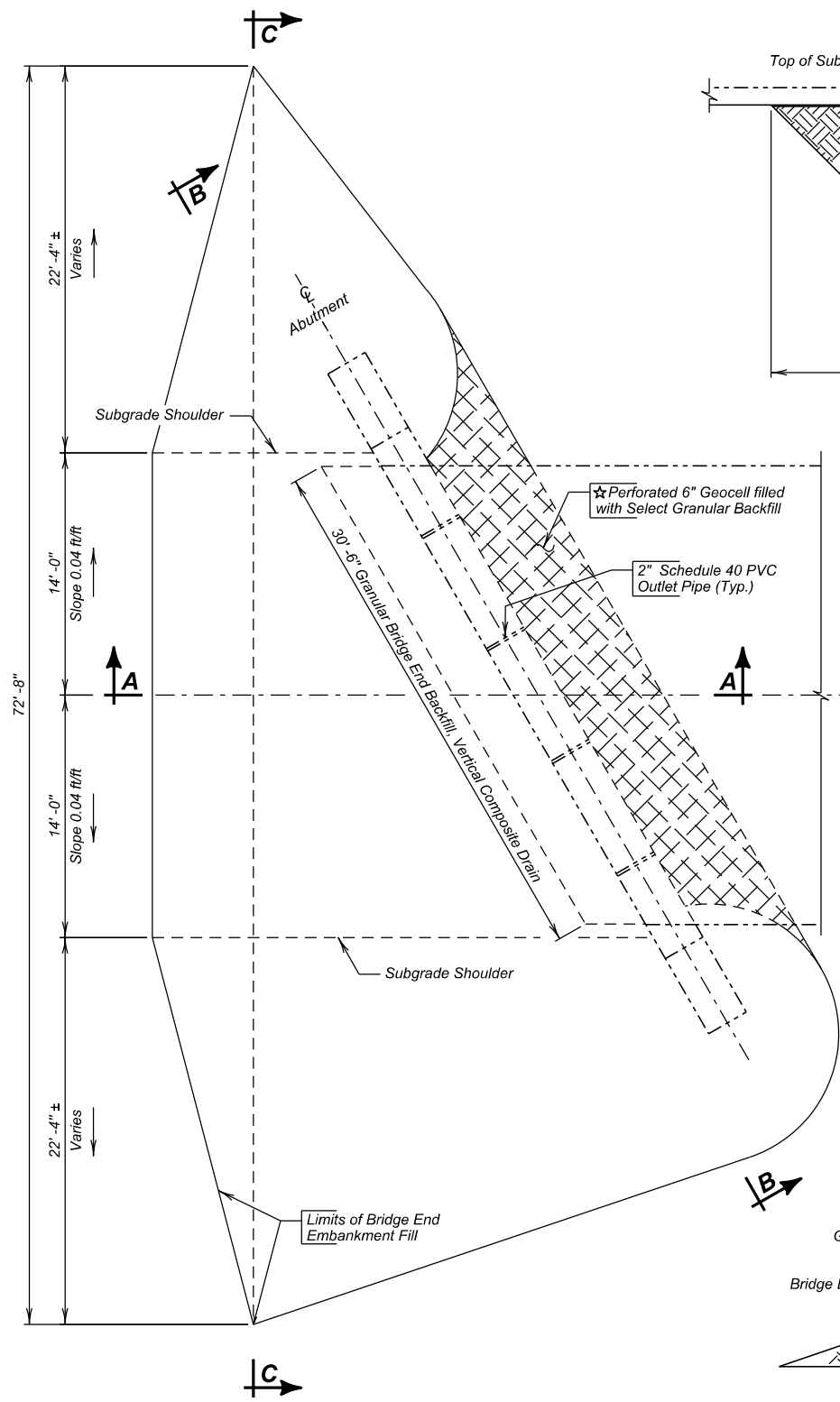


STATE OF
SOUTH
DAKOTA

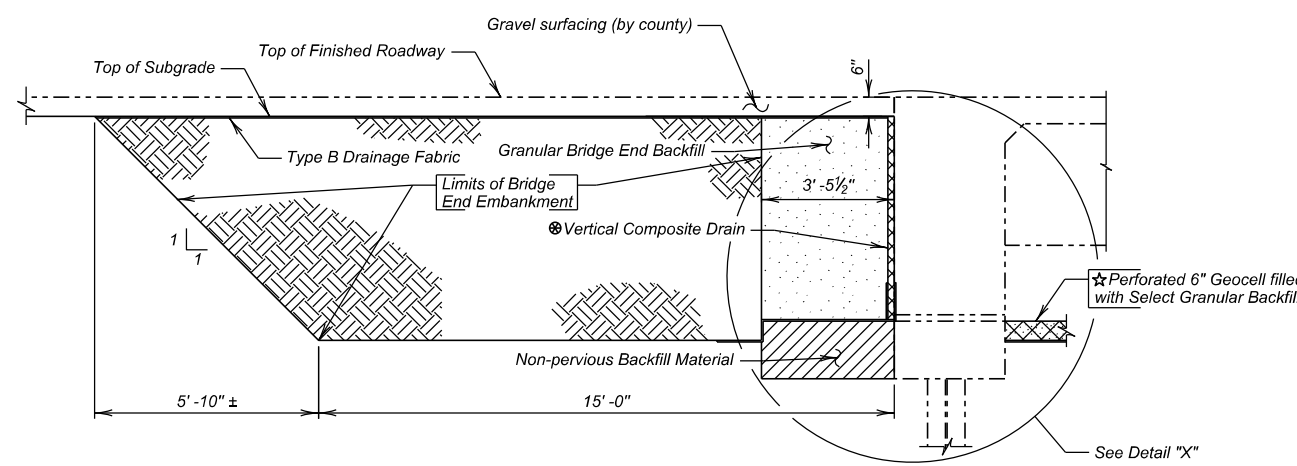
PROJECT
BRO-B 8052(77)

SHEET
40

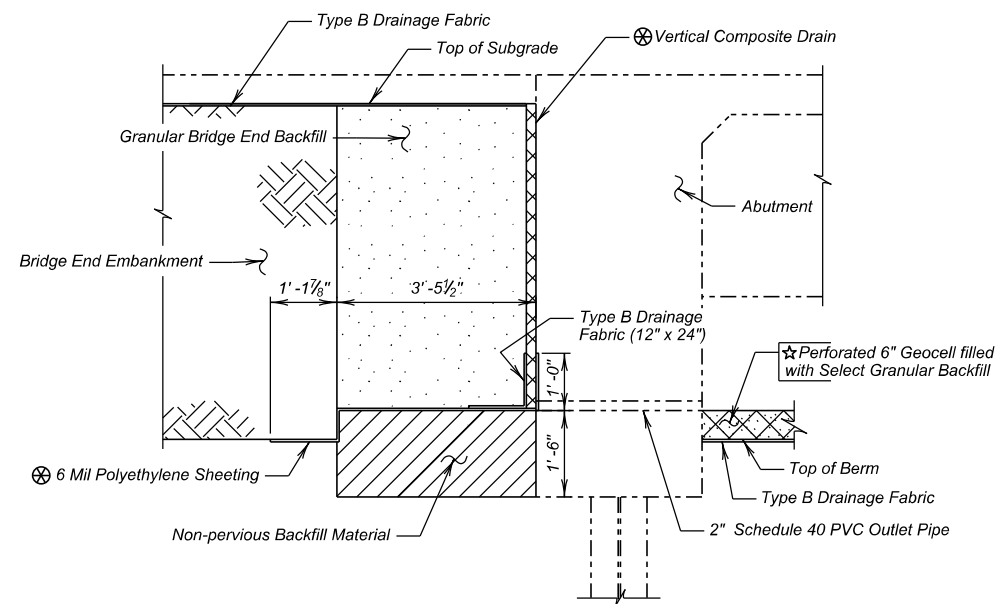
TOTAL
SHEETS
45



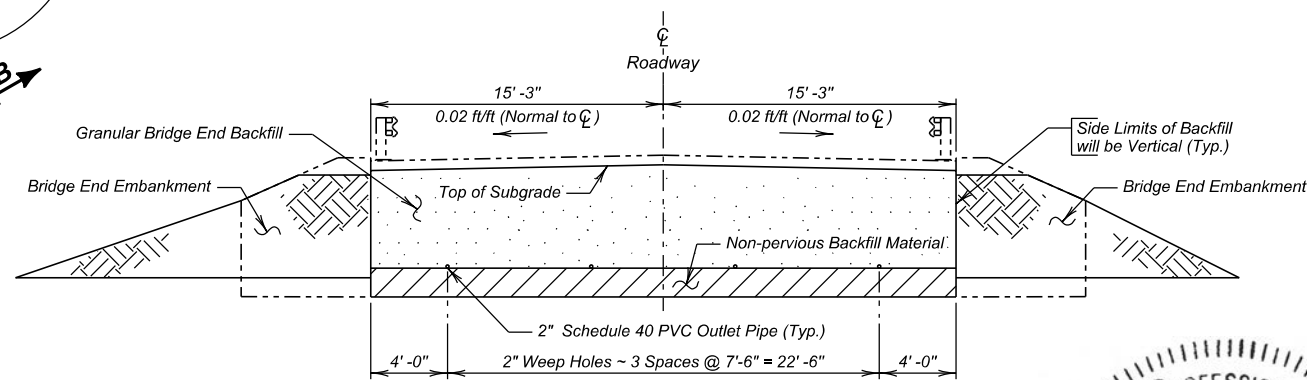
PLAN
(Bridge End Backfill shown adjacent to Abut. No. 1.
Abut. No. 2 similar by opposite hand.)



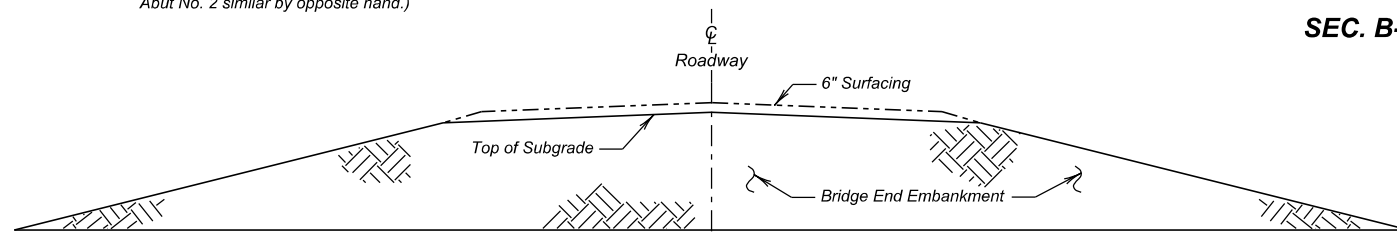
SEC. A-A
(at \bar{C} Rdwy.)



DETAIL "X"



SEC. B-B



SEC. C-C

ESTIMATED QUANTITIES (For Two Abutments)		
ITEM	UNIT	QUANTITY
Granular Bridge End Backfill	Cu. Yd.	35.4
Bridge End Embankment	Cu. Yd.	502
2" Rigid Conduit, Schedule 40	Ft.	20
Perforated Geocell	Sq. Ft.	440
Select Granular Backfill	Ton	15.4

Items 1 thru 2 are approximate quantities and contained in the 2" Rigid Conduit, Schedule 40 and are for information only.

- 20 ft. 2" dia. Rigid Conduit, Schedule 40
- 319 sq. ft. Vertical Composite Drain.

Items 3 and 4 are approximate quantities and contained in the Granular Bridge End Backfill and are for information only.

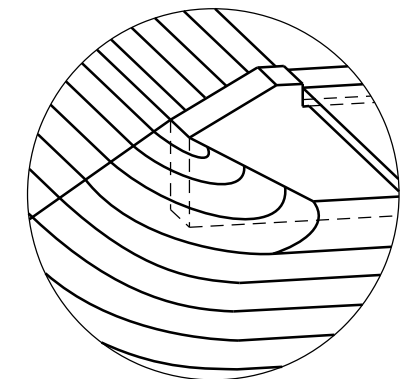
- 336 sq. ft. 6 mil polyethylene Sheeting, not including laps
- 187 sq. yd. Type B Drainage Fabric.

Shrinkage Factor of 1.25 used.

For estimating purposes only, a factor of 1.89 Tons/Cu. Yds. was used to convert Cu. Yds. to Tons.

Provide hole in vertical composite drain and 6 mil polyethylene sheeting to provide drainage through weep holes.

See PERFORATED GEOCELL notes for payment information.



**SPILL CONE DETAIL
AT ABUTMENT**

DETAILS OF BRIDGE END BACKFILL
FOR

80'-0" PRESTR. GIRDER BRIDGE

24'-0" ROADWAY
OVER RAPID CREEK
STA. 12+10.00 to STA. 12+90.00
STR. NO. 52-575-383
PCN 08N3

SEC. 15-T1S-R10E
30° RHF SKEW
BRO-B 8052(77)
HL-93

PENNINGTON COUNTY
S. D. DEPT. OF TRANSPORTATION

JULY 2024

13 OF 16



DESIGNED BY SM	CK. DES. BY AB	DRAFTED BY SM	BRIDGE ENGINEER
-------------------	-------------------	------------------	-----------------