



Planning & Engineering
Office of Project Development
700 E Broadway Avenue
Pierre, South Dakota 57501-2586
O: 605.773.3275 | F: 605.773.2614
dot.sd.gov

April 10, 2025

ADDENDUM NO. 1

RE: Item #9, April 16, 2025 Letting - NH-P 0033(46), PCN 09L7, Bennett, Lyman, Tripp County - Asphalt Surface Treatment

TO WHOM IT MAY CONCERN:

The following addenda to the plans shall be inserted and made a part of your proposal for the referenced project.

SPECIAL PROVISIONS: NO CHANGE

SDEBS BID PROPOSAL: *The electronic bid proposal for this contract has been revised to include the changes associated with this addendum. Bidders must log in to the SDEBS to retrieve and incorporate these changes into their bid.*

Bid Items were added:

Bid Item 634E0420 "Type C Advance Warning Arrow Board"

Quantities for Bid Items were changed:

Bid Item 634E0110 "Traffic Control Signs" changed from 3,014.2 to 3,078.2 SqFt

PLANS: Please destroy sheets 8, 15, 26 and 27 and replace with the enclosed sheets, dated 4/10/25.

Sheet 8: **Bid Items were added:**

Bid Item 634E0420 "Type C Advance Warning Arrow Board"

Quantities for Bid Items were changed:

Bid Item 634E0110 "Traffic Control Signs" changed from 3,014.2 to 3,078.2 SqFt

Sheet 15: SIGN TABULATION SEGMENT 3, 4, & 5 – US HIGHWAY 18 was revised.

Sheets 26 & 27: Standard Plate 634.64 was added, and standard plate placement was adjusted.

Sincerely,

Sam Weisgram
Engineering Supervisor

SW/cj

CC: Jason Humphrey, Pierre Region Engineer
Doug Sherman, Winner Area Engineer

ESTIMATE OF QUANTITIES AND ENVIRONMENTAL COMMITMENTS

STATE OF SOUTH DAKOTA	PROJECT	SHEET	TOTAL SHEETS
	NH-P 0033(46)	8	27

Revised 2/25/25
Revised 4/10/25

ESTIMATE OF QUANTITIES

BID ITEM NUMBER	ITEM	QUANTITY	UNIT
009E0010	Mobilization	Lump Sum	LS
330E0300	SS-1h or CSS-1h Asphalt for Fog Seal	350.1	Ton
330E3000	Sand for Fog Seal	60.0	Ton
360E0042	CRS-2P Asphalt for Surface Treatment	1,370.9	Ton
360E1200	Modified Cover Aggregate	930.2	Ton
360E1200	Modified Cover Aggregate	2,370.7	Ton
360E1200	Modified Cover Aggregate	697.6	Ton
360E1200	Modified Cover Aggregate	108.7	Ton
360E1200	Modified Cover Aggregate	3,798.1	Ton
360E1200	Modified Cover Aggregate	108.7	Ton
360E1200	Modified Cover Aggregate	1,905.4	Ton
633E0010	Cold Applied Plastic Pavement Marking, 4"	3,190	Ft
633E0020	Cold Applied Plastic Pavement Marking, 8"	295	Ft
633E0030	Cold Applied Plastic Pavement Marking, 24"	224	Ft
633E0040	Cold Applied Plastic Pavement Marking, Arrow	2	Each
633E0050	Cold Applied Plastic Pavement Marking, Message	1	Word
633E1200	High Build Waterborne Pavement Marking Paint, White	2,302	Gal
633E1205	High Build Waterborne Pavement Marking Paint, Yellow	953	Gal
633E5000	Grooving for Cold Applied Plastic Pavement Marking, 4"	3,190	Ft
633E5005	Grooving for Cold Applied Plastic Pavement Marking, 8"	295	Ft
633E5015	Grooving for Cold Applied Plastic Pavement Marking, 24"	224	Ft
633E5025	Grooving for Cold Applied Plastic Pavement Marking, Arrow	2	Each
633E5035	Grooving for Cold Applied Plastic Pavement Marking, Message	1	Word
634E0010	Flagging	856.0	Hour
634E0020	Pilot Car	214.0	Hour
634E0110	Traffic Control Signs	3,078.2	SqFt
634E0120	Traffic Control, Miscellaneous	Lump Sum	LS
634E0420	Type C Advance Warning Arrow Board	2	Each
634E0630	Temporary Pavement Marking	162.7	Mile

SPECIFICATIONS

Standard Specifications for Roads and Bridges, 2015 Edition and Required Provisions, Supplemental Specifications, and Special Provisions as included in the Proposal.

SIGN TABULATION

SEGMENT 1 – SD HIGHWAY 73

ITEMIZED LIST FOR TRAFFIC CONTROL SIGNS

SIGN CODE	SIGN DESCRIPTION	CONVENTIONAL ROAD			
		NUMBER	SIGN SIZE	SQFT PER SIGN	SQFT
W8-6	TRUCK CROSSING	2	48" x 48"	16.0	32.0
W8-7	LOOSE GRAVEL	8	48" x 48"	16.0	128.0
W13-1P	ADVISORY SPEED (plaque)	8	30" x 30"	6.3	50.4
W20-1	ROAD WORK AHEAD	7	48" x 48"	16.0	112.0
W20-4	ONE LANE ROAD AHEAD	4	48" x 48"	16.0	64.0
W20-7	FLAGGER (symbol)	4	48" x 48"	16.0	64.0
G20-1	ROAD WORK NEXT __ MILES	2	36" x 18"	4.5	9.0
G20-2	END ROAD WORK	4	36" x 18"	4.5	18.0
SPECIAL	WAIT FOR PILOT CAR	6	30" x 18"	3.8	22.8
		CONVENTIONAL ROAD TRAFFIC CONTROL SIGNS SQFT			
		500.2			

SEGMENT 2 – SD HIGHWAY 53

ITEMIZED LIST FOR TRAFFIC CONTROL SIGNS

SIGN CODE	SIGN DESCRIPTION	CONVENTIONAL ROAD			
		NUMBER	SIGN SIZE	SQFT PER SIGN	SQFT
W8-6	TRUCK CROSSING	2	48" x 48"	16.0	32.0
W8-7	LOOSE GRAVEL	8	48" x 48"	16.0	128.0
W13-1P	ADVISORY SPEED (plaque)	8	30" x 30"	6.3	50.4
W20-1	ROAD WORK AHEAD	21	48" x 48"	16.0	336.0
W20-4	ONE LANE ROAD AHEAD	4	48" x 48"	16.0	64.0
W20-7	FLAGGER (symbol)	4	48" x 48"	16.0	64.0
G20-1	ROAD WORK NEXT __ MILES	2	36" x 18"	4.5	9.0
G20-2	END ROAD WORK	2	36" x 18"	4.5	9.0
SPECIAL	WAIT FOR PILOT CAR	8	30" x 18"	3.8	30.4
		CONVENTIONAL ROAD TRAFFIC CONTROL SIGNS SQFT			
		722.8			

SEGMENT 3, 4 & 5 – US HIGHWAY 18

ITEMIZED LIST FOR TRAFFIC CONTROL SIGNS

SIGN CODE	SIGN DESCRIPTION	CONVENTIONAL ROAD			
		NUMBER	SIGN SIZE	SQFT PER SIGN	SQFT
W4-2	LEFT or RIGHT LANE ENDS (symbol)	2	48" x 48"	16.0	32.0
W8-6	TRUCK CROSSING	2	48" x 48"	16.0	32.0
W8-7	LOOSE GRAVEL	4	48" x 48"	16.0	64.0
W13-1P	ADVISORY SPEED (plaque)	4	30" x 30"	6.3	25.2
W20-1	ROAD WORK AHEAD	15	48" x 48"	16.0	240.0
W20-4	ONE LANE ROAD AHEAD	4	48" x 48"	16.0	64.0
W20-5	LEFT or RIGHT LANE CLOSED AHEAD	2	48" x 48"	16.0	32.0
W20-7	FLAGGER (symbol)	4	48" x 48"	16.0	64.0
G20-1	ROAD WORK NEXT __ MILES	2	36" x 18"	4.5	9.0
G20-2	END ROAD WORK	2	36" x 18"	4.5	9.0
SPECIAL	WAIT FOR PILOT CAR	8	30" x 18"	3.8	30.4
		CONVENTIONAL ROAD TRAFFIC CONTROL SIGNS SQFT			
		601.6			

SEGMENT 6 – SD HIGHWAY 44

ITEMIZED LIST FOR TRAFFIC CONTROL SIGNS

SIGN CODE	SIGN DESCRIPTION	CONVENTIONAL ROAD			
		NUMBER	SIGN SIZE	SQFT PER SIGN	SQFT
W8-6	TRUCK CROSSING	2	48" x 48"	16.0	32.0
W8-7	LOOSE GRAVEL	2	48" x 48"	16.0	32.0
W13-1P	ADVISORY SPEED (plaque)	2	30" x 30"	6.3	12.6
W20-1	ROAD WORK AHEAD	6	48" x 48"	16.0	96.0
W20-4	ONE LANE ROAD AHEAD	2	48" x 48"	16.0	32.0
W20-7	FLAGGER (symbol)	2	48" x 48"	16.0	32.0
G20-1	ROAD WORK NEXT __ MILES	2	36" x 18"	4.5	9.0
G20-2	END ROAD WORK	2	36" x 18"	4.5	9.0
SPECIAL	WAIT FOR PILOT CAR	8	30" x 18"	3.8	30.4
		CONVENTIONAL ROAD TRAFFIC CONTROL SIGNS SQFT			
		285.0			

SEGMENT 7 – SD HIGHWAY 49

ITEMIZED LIST FOR TRAFFIC CONTROL SIGNS

SIGN CODE	SIGN DESCRIPTION	CONVENTIONAL ROAD			
		NUMBER	SIGN SIZE	SQFT PER SIGN	SQFT
W8-6	TRUCK CROSSING	2	48" x 48"	16.0	32.0
W8-7	LOOSE GRAVEL	14	48" x 48"	16.0	224.0
W13-1P	ADVISORY SPEED (plaque)	14	30" x 30"	6.3	88.2
W20-1	ROAD WORK AHEAD	28	48" x 48"	16.0	448.0
W20-4	ONE LANE ROAD AHEAD	4	48" x 48"	16.0	64.0
W20-7	FLAGGER (symbol)	4	48" x 48"	16.0	64.0
G20-1	ROAD WORK NEXT __ MILES	2	36" x 18"	4.5	9.0
G20-2	END ROAD WORK	2	36" x 18"	4.5	9.0
SPECIAL	WAIT FOR PILOT CAR	8	30" x 18"	3.8	30.4
		CONVENTIONAL ROAD TRAFFIC CONTROL SIGNS SQFT			
		968.6			

Posted Speed Prior to Work (M.P.H.)	Spacing of Advance Warning Signs (Feet) (A)	Spacing of Channelizing Devices (Feet) (G)
0 - 30	200	25
35 - 40	350	25
45	500	25
50	500	50
55	750	50
60 - 65	1000	50

- Flagger
- Channelizing Device

For low-volume traffic situations with short work zones on straight roadways where the flagger is visible to road users approaching from both directions, a single flagger may be used.

The ROAD WORK AHEAD and the END ROAD WORK signs may be omitted for short duration operations (1 hour or less).

For tack and/or flush seal operations, when flaggers are not being used, the FRESH OIL sign (W21-2) will be displayed in advance of the liquid asphalt areas.

Flashing warning lights and/or flags may be used to call attention to the advance warning signs.

The channelizing devices will be drums or 42" cones.

Channelizing devices are not required along the centerline adjacent to work area when pilot cars are utilized for escorting traffic through the work area.

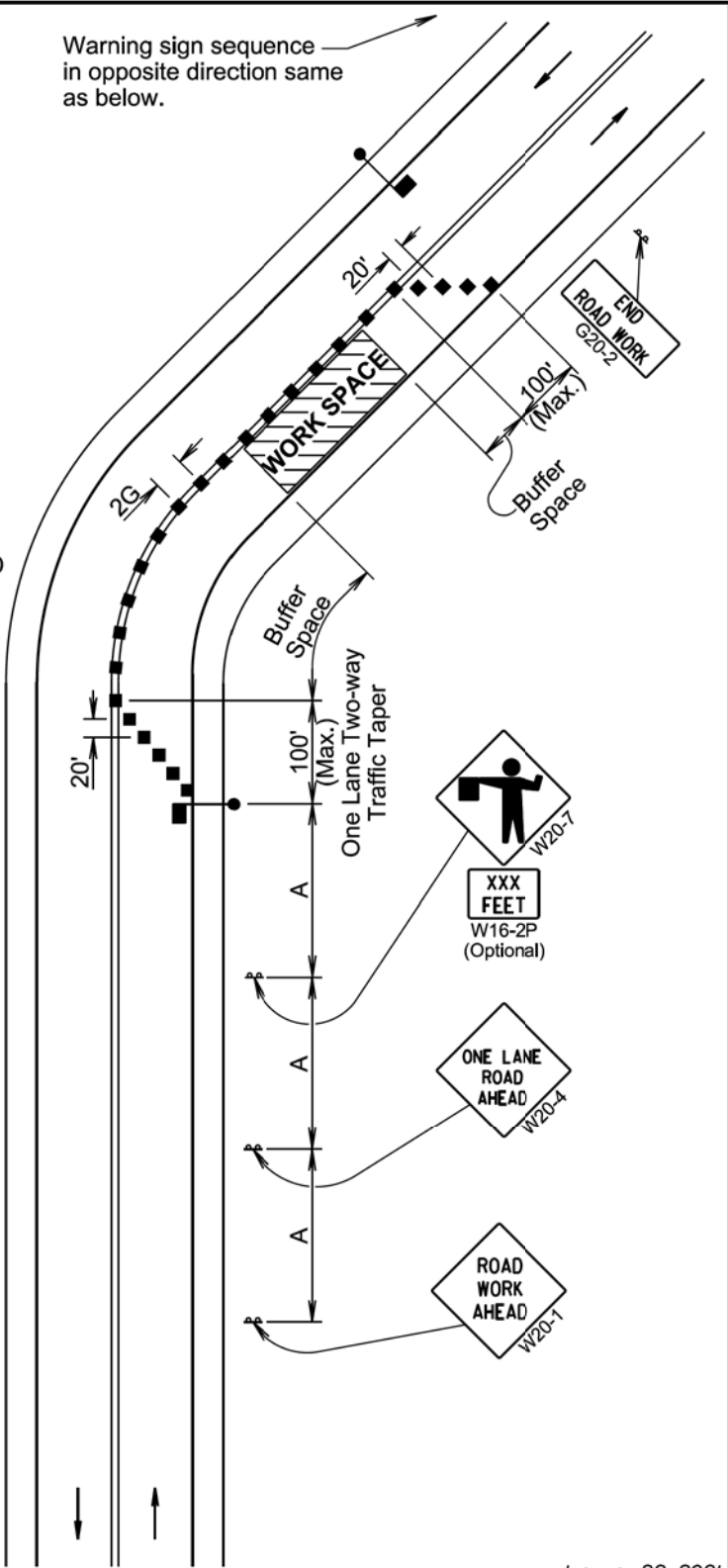
END ROAD WORK
G20-2

Channelizing devices and flaggers will be used at intersecting roads to control intersecting road traffic as required.

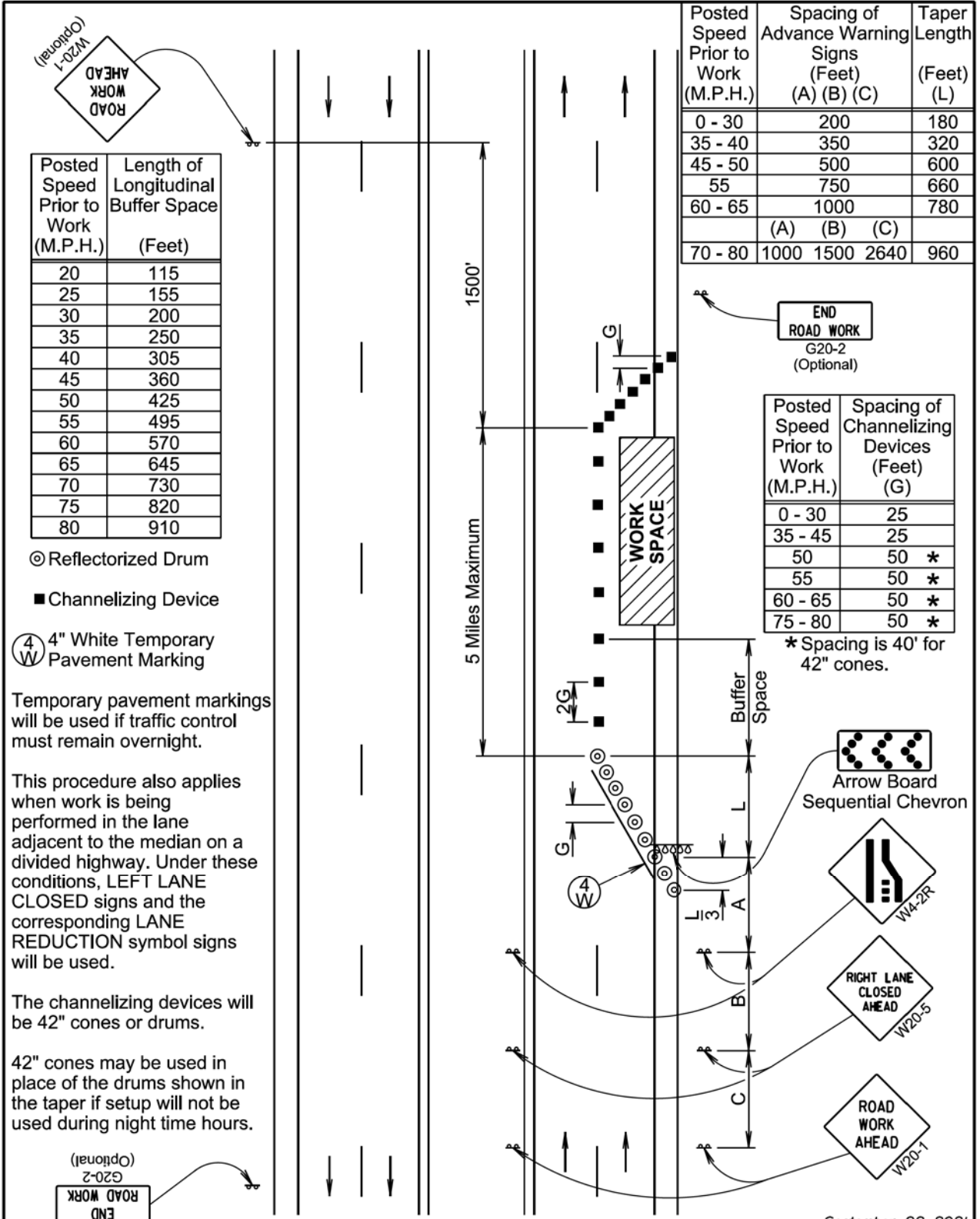
The buffer space should be extended so that the two-way traffic taper is placed before a horizontal or vertical curve to provide adequate sight distance for the flagger and queue of stopped vehicles.

The length of A may be adjusted to fit field conditions.

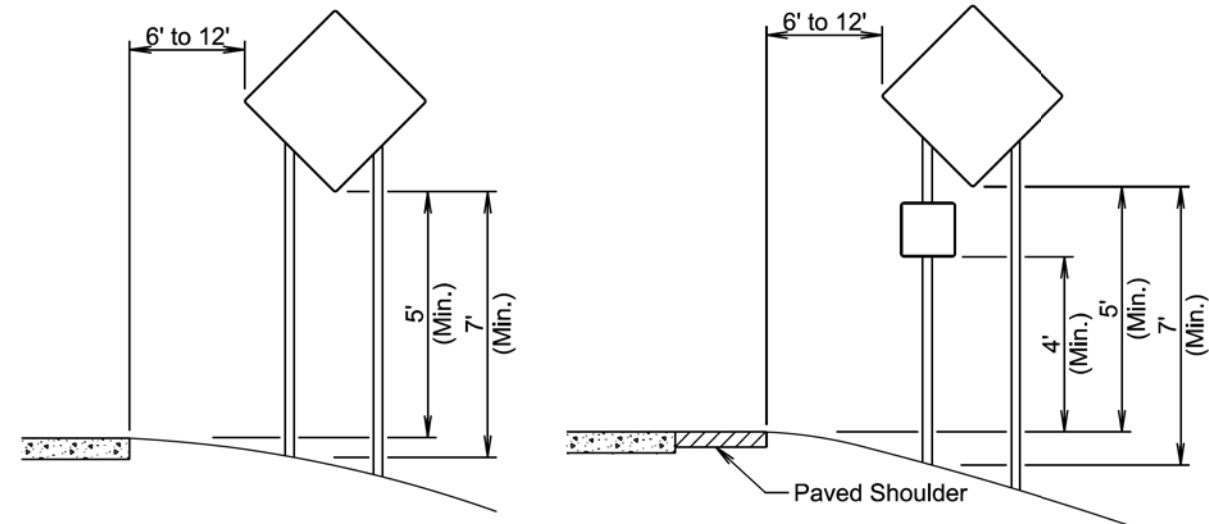
Warning sign sequence in opposite direction same as below.



January 22, 2021

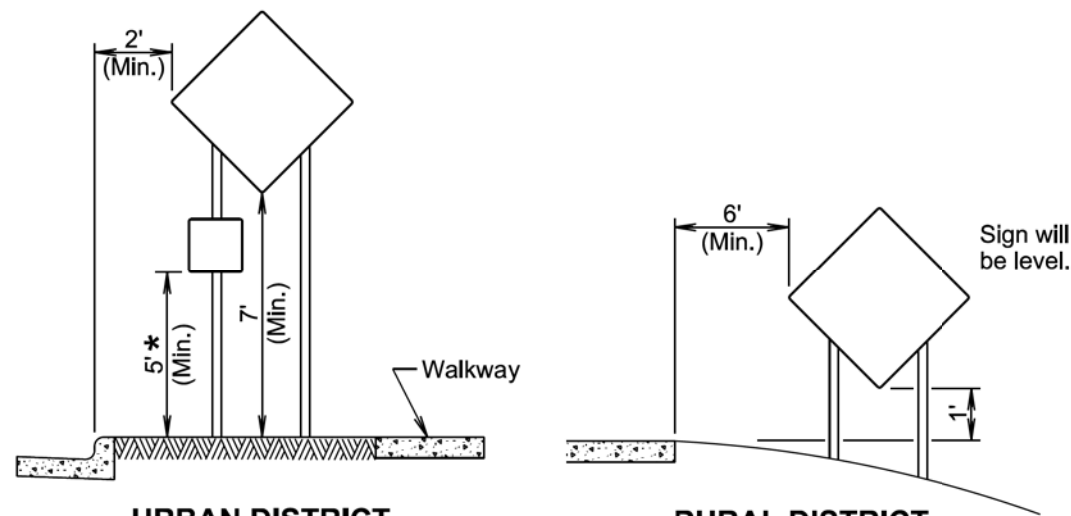


September 22, 2021



RURAL DISTRICT

**RURAL DISTRICT WITH
SUPPLEMENTAL PLATE**



URBAN DISTRICT

**RURAL DISTRICT
3 DAY MAXIMUM**
(Not applicable to regulatory signs)

* If the bottom of supplemental plate is mounted lower than 7 feet above a pedestrian walkway, the supplemental plate should not project more than 4" into the pedestrian facility.

January 22, 2021

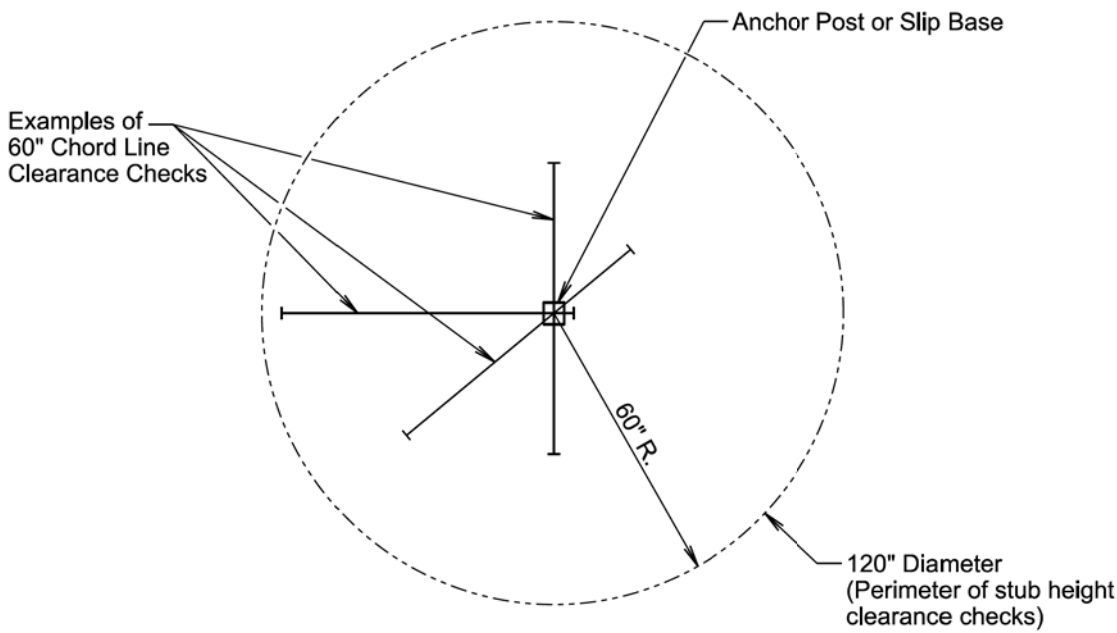
Published Date: 2025

**S
D
D
O
T**

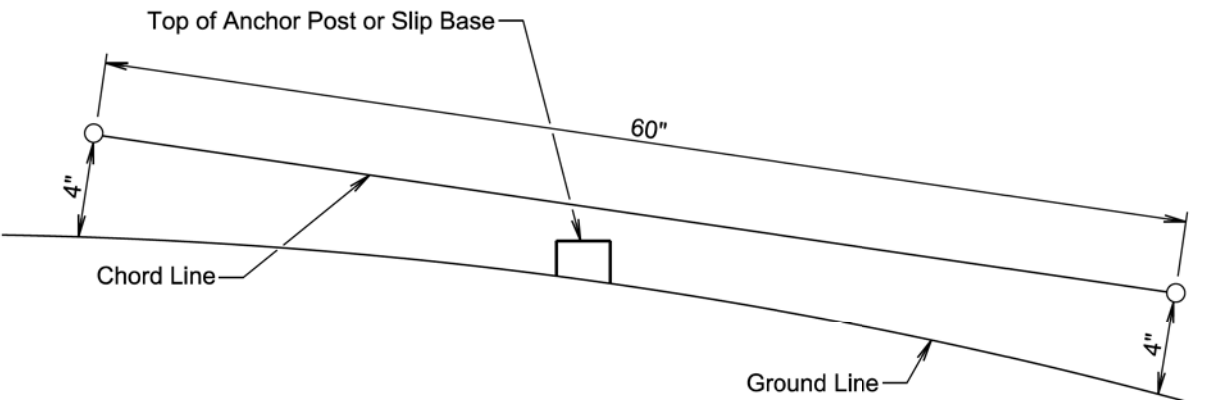
CRASHWORTHY SIGN SUPPORTS
(Typical Construction Signing)

PLATE NUMBER
634.85

Sheet 1 of 1



PLAN VIEW
(Examples of stub height clearance checks)



ELEVATION VIEW

GENERAL NOTES:

The top of anchor posts and slip bases WILL NOT extend above a 60" chord line within a 120" diameter circle around the post with ends 4" above the ground.

At locations where there is curb and gutter adjacent to the breakaway sign support, the stub height will be a maximum of 4" above the ground line at the localized area adjacent to the breakaway support stub.

The 4" stub height clearance is not necessary for U-channel lap splices where the support is designed to yield (bend) at the base.

January 22, 2021

Published Date: 2025

**S
D
D
O
T**

BREAKAWAY SUPPORT STUB CLEARANCE

PLATE NUMBER
634.99

Sheet 1 of 1