

November 25, 2024

ADDENDUM NO. 1

RE: Item #2, December 11, 2024 Letting - 436 (), PCN X05W, Hughes County - Water Main Improvement and Sewer Manhole Adjustments

TO WHOM IT MAY CONCERN:

The following addenda to the plans shall be inserted and made a part of your proposal for the referenced project.

SPECIAL PROVISIONS: NONE

SDEBS BID PROPOSAL: *The electronic bid proposal for this contract has been revised to include the changes associated with this addendum. Bidders must log in to the SDEBS to retrieve and incorporate these changes into their bid.*

Bid Items were added:

Bid Item 451E3108 "8" Pipe Cap"
Bid Item 451E4584 "Flushing Hydrant"
Bid Item 451E4589 "Install Fire Hydrant"

Quantities for Bid Items were changed:

Bid Item 451E0202 "1" Muncipex Pipe" changed from 2,240 to 2,393 Ft
Bid Item 451E0208 "2" Muncipex Pipe" changed from 314 to 341 Ft
Bid Item 451E0604 "4" PVC Water Main" changed from 139 to 147 Ft
Bid Item 451E0606 "6" PVC Water Main" changed from 919 to 826 Ft
Bid Item 451E0608 "8" PVC Water Main" changed from 75 to 229 Ft
Bid Item 451E2241 "14"x6" Pipe Tee" changed from 16 to 14 Each
Bid Item 451E2431 "12"x6" Pipe Reducer" changed from 3 to 1 Each
Bid Item 451E2441 "14"x6" Pipe Reducer" changed from 2 to 4 Each
Bid Item 451E2902 "1" Curb Stop with Box" changed from 68 to 67 Each
Bid Item 451E2908 "2" Curb Stop with Box" changed from 8 to 9 Each
Bid Item 451E3006 "6" Pipe Bend" changed from 12 to 8 Each
Bid Item 451E4204 "4" Gate Valve with Box" changed from 3 to 4 Each
Bid Item 451E4206 "6" Gate Valve with Box" changed from 14 to 25 Each
Bid Item 451E4214 "14" Gate Valve with Box" changed from 25 to 23 Each
Bid Item 451E6105 "Connect To Existing Water Main" changed from 18 to 16 Each

Bid Items were removed:

Bid Item 451E0116 "16" Steel Encasement Pipe"
Bid Item 451E4585 "Fire Hydrant with Auxiliary Valve & Box"

PLANS: Please destroy sheets D.1, D.2, D.3, D.4, I.5, I.12, I.13, I.19 & N.1 and replace with the enclosed sheets, dated 11/21/24.

Sheet D.1: **Bid Items were added:**
Bid Item 451E3108 "8" Pipe Cap"
Bid Item 451E4584 "Flushing Hydrant"
Bid Item 451E4589 "Install Fire Hydrant"

Quantities for Bid Items were changed:

Bid Item 451E0202 "1" Muncipex Pipe" changed from 2,240 to 2,393 Ft
Bid Item 451E0208 "2" Muncipex Pipe" changed from 314 to 341 Ft
Bid Item 451E0604 "4" PVC Water Main" changed from 139 to 147 Ft
Bid Item 451E0606 "6" PVC Water Main" changed from 919 to 826 Ft
Bid Item 451E0608 "8" PVC Water Main" changed from 75 to 229 Ft
Bid Item 451E2241 "14"x6" Pipe Tee" changed from 16 to 14 Each
Bid Item 451E2431 "12"x6" Pipe Reducer" changed from 3 to 1 Each
Bid Item 451E2441 "14"x6" Pipe Reducer" changed from 2 to 4 Each
Bid Item 451E2902 "1" Curb Stop with Box" changed from 68 to 67 Each
Bid Item 451E2908 "2" Curb Stop with Box" changed from 8 to 9 Each
Bid Item 451E3006 "6" Pipe Bend" changed from 12 to 8 Each
Bid Item 451E4204 "4" Gate Valve with Box" changed from 3 to 4 Each
Bid Item 451E4206 "6" Gate Valve with Box" changed from 14 to 25 Each
Bid Item 451E4214 "14" Gate Valve with Box" changed from 25 to 23 Each
Bid Item 451E6105 "Connect To Existing Water Main" changed from 18 to 16 Each

Bid Items were removed:

Bid Item 451E0116 "16" Steel Encasement Pipe"
Bid Item 451E4585 "Fire Hydrant with Auxiliary Valve & Box"

Sheet D.2: STEEL CASING PIPE note was removed.

Sheet D.3: SANITARY SEWER SERVICE note was revised. Third paragraph was revised.

Sheet D.4: CITY MATERIAL PROCUREMENT note was added.

Sheets I.2, I.3, I.4, I.6, I.7, I.8, I.9, I.10, I.11, I.20: PEN AND INK change all instances of "F&I Fire Hydrant" to "Install Fire Hydrant".

Sheet I.5: Water service size and locations were revised.

Sheet I.12: Connection to existing water main was removed at Sta 267+88.55.

Sheets I.13 & I.19: Connection to existing water main was removed at Sta 272+30.32. 6" cap and flushing hydrant was added. Replaced 16" steel casing pipe with 8" PVC and caps.

Sheet N.1:

FLUSHING HYDRANT detail was added.

Sincerely,

Sam Weisgram
Engineering Supervisor

SW/cj

CC: Jason Humphrey, Pierre Region Engineer
Dean VanDeWiele, Pierre Area Engineer

REV DATE: 11/21/2024 INITIAL: DLH

REV DATE: 04/23/2024 INITIAL: DLH

REV DATE: 08/28/2024 INITIAL: DLH

REV DATE: 10/23/2024 INITIAL: DLH

ESTIMATE OF QUANTITIES

Non-Section Method

BID ITEM NUMBER	ITEM	QUANTITY	UNIT
009E0010	Mobilization	Lump Sum	LS
009E3200	Construction Staking	Lump Sum	LS
110E0300	Remove Concrete Curb and/or Gutter	35	Ft
110E0460	Remove Manhole	5	Each
110E1010	Remove Asphalt Concrete Pavement	83.0	SqYd
110E1140	Remove Concrete Sidewalk	12.0	SqYd
250E0010	Incidental Work	Lump Sum	LS
260E1010	Base Course	104.0	Ton
320E1200	Asphalt Concrete Composite	28.0	Ton
330E0100	SS-1h or CSS-1h Asphalt for Tack	0.1	Ton
451E0202	1" Muncipex Pipe	2,393	Ft
451E0206	1.5" Muncipex Pipe	126	Ft
451E0208	2" Muncipex Pipe	341	Ft
451E0512	3" PVC Pipe	26	Ft
451E0604	4" PVC Water Main	147	Ft
451E0606	6" PVC Water Main	826	Ft
451E0608	8" PVC Water Main	229	Ft
451E0610	10" PVC Water Main	276	Ft
451E0612	12" PVC Water Main	60	Ft
451E0614	14" PVC Water Main	6,694	Ft
451E1008	8" PVC Sewer Pipe	314	Ft
451E1010	10" PVC Sewer Pipe	8	Ft
451E1012	12" PVC Sewer Pipe	8	Ft
451E1015	15" PVC Sewer Pipe	5	Ft
451E1018	18" PVC Sewer Pipe	598	Ft
451E1204	4" Sewer Service	1,145	Ft
451E1206	6" Sewer Service	50	Ft
451E1550	Sanitary Sewer Video Inspection	3,300	Ft
451E2206	6"x4" Pipe Tee	1	Each
451E2207	6"x6" Pipe Tee	1	Each
451E2213	8"x6" Pipe Tee	1	Each
451E2239	14"x3" Pipe Tee	1	Each
451E2240	14"x4" Pipe Tee	2	Each
451E2241	14"x6" Pipe Tee	14	Each
451E2242	14"x8" Pipe Tee	1	Each
451E2243	14"x10" Pipe Tee	1	Each
451E2245	14"x14" Pipe Tee	4	Each
451E2341	14"x6" Pipe Cross	2	Each
451E2343	14"x10" Pipe Cross	2	Each
451E2344	14"x12" Pipe Cross	1	Each
451E2345	14"x14" Pipe Cross	1	Each
451E2406	6"x4" Pipe Reducer	1	Each
451E2431	12"x6" Pipe Reducer	1	Each

Non-Section Method

BID ITEM NUMBER	ITEM	QUANTITY	UNIT
451E2441	14"x6" Pipe Reducer	4	Each
451E2443	14"x10" Pipe Reducer	1	Each
451E2444	14"x12" Pipe Reducer	1	Each
451E2902	1" Curb Stop with Box	67	Each
451E2906	1.5" Curb Stop with Box	4	Each
451E2908	2" Curb Stop with Box	9	Each
451E3006	6" Pipe Bend	8	Each
451E3014	14" Pipe Bend	35	Each
451E3106	6" Pipe Cap	4	Each
451E3108	8" Pipe Cap	2	Each
451E4203	3" Gate Valve with Box	1	Each
451E4204	4" Gate Valve with Box	4	Each
451E4206	6" Gate Valve with Box	25	Each
451E4208	8" Gate Valve with Box	1	Each
451E4210	10" Gate Valve with Box	5	Each
451E4212	12" Gate Valve with Box	1	Each
451E4214	14" Gate Valve with Box	23	Each
451E4380	Tracer Wire Access Box, Type 1	99	Each
451E4584	Flushing Hydrant	1	Each
# 451E4589	Install Fire Hydrant	12	Each
451E4903	Type 2 Foundation Material	100.0	Ton
451E4904	Type 3 Foundation Material	100.0	Ton
451E4918	Imported Trench Backfill	2,000	CuYd
451E6050	Temporary Water Service	20	Each
451E6055	Temporary Water Main Connection	2	Each
451E6100	Reconnect Water Service	87	Each
451E6103	Abandon Water Main	6,780	Ft
451E6105	Connect To Existing Water Main	16	Each
451E7010	Reconnect Sewer Service	24	Each
451E7016	Connect to Existing Sewer Main	9	Each
451E7020	Sewer Bypass Pumping	Lump Sum	LS
650E0060	Type B66 Concrete Curb and Gutter	35	Ft
651E0040	4" Concrete Sidewalk	108	SqFt
671E1048	48" Manhole	4	Each
671E1348	48" Drop Manhole	1	Each
671E6040	Manhole Frame	11	Each
671E6050	Manhole Lid	11	Each
671E7010	Adjust Manhole	18	Each
734E0845	Sediment Control at Inlet with Frame and Grate	5	Each
831E0300	Reinforcement Fabric (MSE)	98	SqYd

STANDARD NOTES

PROJECT SEQUENCING

THE CONTRACTOR SHALL USE THE DRAWINGS FOR PROJECT SEQUENCING GUIDANCE.

- IMPLEMENT TRAFFIC CONTROL PLAN AND INSTALL MOVEABLE BARRIERS FOR PROPOSED EXCAVATION AREAS.
- NO TOPSOIL STRIPPING OR EXCAVATION MAY PROCEED UNTIL EROSION CONTROL DEVICES AND THE POLLUTION CONTROL PLAN ARE IMPLEMENTED. REFER TO THE EROSION CONTROL LAYOUT FOR MORE INFORMATION.
- NO EXCAVATION, OR SEWER INSTALLATION OR WATER INSTALLATION MAY PROCEED UNTIL EROSION CONTROL DEVICES AND THE POLLUTION CONTROL PLAN ARE IMPLEMENTED.
- PERFORM TOPSOIL STRIPPING, AND SALVAGE AND PLACE INTO STOCKPILES. IMPLEMENT POLLUTION CONTROL MEASURES AS NECESSARY.
- THE CONTRACTOR IS RESPONSIBLE FOR SCHEDULING OF EROSION CONTROL, SEEDING AND MULCHING TO COMPLY WITH EROSION CONTROL PLAN AND STORM WATER PERMIT. THE CONTRACTOR SHALL PERFORM FINAL RESTORATION AND EROSION CONTROL INSTALLATION IMMEDIATELY FOLLOWING TRENCHING WORK.
- COMPLETE SITE RESTORATION, DITCH GRADING, TOPSOIL PLACEMENT, COMPOST MIXING, SEEDING, FERTILIZING, MULCHING, EROSION CONTROL MATTING AND WATTLES.
- REMOVE SILT FENCE UPON REQUEST OF ENGINEER.

THE CONTRACTOR SHALL DEVELOP A CONSTRUCTION SCHEDULE AND SEQUENCE TO MEET THE GENERAL INTENT. CONTRACTOR SHALL REFER TO THE TRAFFIC CONTROL PLAN FOR GENERAL PHASING REQUIREMENTS.

SCHEDULING OF EROSION CONTROL, SEEDING, MULCHING AND GRAVEL PLACEMENT SHALL BE SCHEDULED IN CONJUNCTION WITH THE WORK TO AVOID EROSION OF THE WORK AREA.

THE CONTRACTOR SHALL SUBMIT THE PROPOSED SEQUENCE AND THE PROPOSED SCHEDULE NOT LESS THAN (7) WORKING DAYS PRIOR TO PRE-CONSTRUCTION MEETING.

SEQUENCE OF CONSTRUCTION

THE CONTRACTOR SHALL PREPARE AND SUBMIT A CONSTRUCTION SEQUENCE PLAN TO THE ENGINEER FOR APPROVAL. WORK UNDER THE CONTRACT SHALL BE SCHEDULED AND PERFORMED IN SUCH A MANNER AS TO ALLOW COMPLETION IN ACCORDANCE WITH THE CONTRACT. SCHEDULING OF EROSION CONTROL, SEEDING, MULCHING AND GRAVEL PLACEMENT SHALL BE SCHEDULED IN CONJUNCTION WITH THE WORK TO AVOID EROSION OF THE WORK AREA.

SUBMITTALS

THE TERM "SUBMITTALS" INCLUDES DRAWINGS, DIAGRAMS, DESCRIPTIVE LITERATURE, ILLUSTRATIONS, INSTRUCTIONS, SCHEDULES, PERFORMANCE AND TEST DATA, PRODUCT DATA SHEETS, MATERIAL SAFETY DATA SHEETS, AND SIMILAR MATERIALS BY A SUPPLIER OR CONTRACTOR TO ILLUSTRATE MATERIAL OR EQUIPMENT FOR SOME PORTION OF THE WORK.

AT LEAST FOURTEEN (14) WORKING DAYS BEFORE HIS NEED FOR APPROVAL, THE CONTRACTOR SHALL SUBMIT TO THE ENGINEER ELECTRONIC SUBMITTALS FOR ALL CONTRACTOR-FURNISHED PRODUCTS. SUBMITTALS SHALL CLEARLY IDENTIFY ANY DEVIATION FROM THE SPECIFICATIONS, AND SHALL BE CERTIFIED AND DATED BY THE CONTRACTOR. SUBMITTALS WILL BE ACCEPTED ONLY FROM THE CONTRACTOR. THE ENGINEER WILL INDICATE HIS APPROVAL OR DISAPPROVAL OF EACH SUBMITTAL AND, IF HE DOES NOT APPROVE THE SUBMITTAL HE WILL INDICATE HIS REASONS FOR SO DOING. ANY WORK DONE PRIOR TO APPROVAL SHALL BE AT THE CONTRACTOR'S OWN EXPENSE. RESUBMITTALS SHALL BE MADE THE SAME AS FOR ORIGINAL SUBMITTALS WITH CHANGES FROM THE PREVIOUS SUBMITTAL CLEARLY SHOWN.

THE LOG OF CONSTRUCTION SUBMITTALS SHALL INCLUDE BUT IS NOT LIMITED TO THE TABLE BELOW:

CONSTRUCTION SCHEDULE	SUBCONTRACTOR & SUPPLIER LIST
KEY PERSONNEL	CASTING SANITARY SEWER
STORM WATER PLAN	FIRE HYDRANTS
PVC WATER MAIN	WATER SERVICE
SD DENR DEWATERING PERMIT	INLET PROTECTION
FITTINGS	VALVES
TYPE 1 BEDDING MATERIAL	SADDLES
CORPORATION STOPS	CONCRETE ENCASEMENTS
WATER MAIN DISINFECTION TABLETS	FLOWABLE FILL
OTHER SUBMITTALS	

EXISTING SIGNS:

ALL TRAFFIC CONTROL SIGNS REMOVED OR DAMAGED BY THE CONTRACTOR SHALL BE RESET OR REPLACED, AND SHALL BE PAID FOR UNDER THE BID ITEM "INCIDENTAL WORK".

CONCRETE WASHOUT AREA

THE CONTRACTOR SHALL CONSTRUCT AND MAINTAIN A MINIMUM OF ONE (1) CONCRETE WASHOUT AREA ON THE SITE WHILE CONCRETE IS BEING PLACED. THE CONCRETE WASHOUT AREA SHALL BE FULLY CONTAINED AND NOT CONNECTED HYDRAULICALLY TO THE STORM SEWER NETWORK. THE CONTRACTOR SHALL DIRECT THE CONCRETE SUPPLIER IN THE LOCATION OF AND USE OF THE CONCRETE WASHOUT AREA. A DETAIL FOR THE CONSTRUCTION OF THE CONCRETE WASHOUT AREA IS INCLUDED IN THIS PLAN SET, SEE DETAIL SHEETS. NO SEPARATE PAYMENT SHALL BE MADE FOR CONSTRUCTION AND MAINTENANCE OF THE CONCRETE WASHOUT AREA; IT SHALL BE PAID FOR UNDER THE BID ITEM "INCIDENTAL WORK".

COORDINATION AND SCHEDULING

A PRECONSTRUCTION MEETING WILL BE CONDUCTED AND THE CONTRACTOR SHALL SUBMIT A CONSTRUCTION SCHEDULE. THE CONTRACTOR WILL BE REQUIRED TO ATTEND THIS AND OTHER PERIODIC MEETINGS WITH CITY PERSONNEL AND AFFECTED UTILITIES OWNERS FOR THE PURPOSE OF SCHEDULING AND COORDINATION DURING THE COURSE OF CONSTRUCTION. THE CONTRACTOR SHALL ALSO BE REQUIRED TO COORDINATE WITH THE CITY OF PIERRE WATER DEPARTMENT FOR TYING INTO THE EXISTING MAINS AND FOR ANY TEMPORARY SHUT OFF SERVICES AND UTILITY MAINTENANCE DEPARTMENT FOR SANITARY SEWER SERVICE LINE TAPS. THE ENGINEER WILL ESTABLISH FREQUENCY, TIME, AND LOCATION OF THE PERIODIC MEETINGS.

INSTALL ONLY (CITY FURNISHED ITEM) REFER TO THE CITY MATERIAL PROCUREMENT NOTE REGARDING ADDITIONAL COSTS THAT NEED TO BE ACCOUNTED FOR WITHIN THE CONTRACT UNIT PRICE FOR EACH CITY FURNISHED ITEM.



STATE OF SOUTH DAKOTA	PROJECT	SHEET	TOTAL SHEETS
	X05W	D.2	D.6

REV DATE: 04/23/2024 INITIAL: DLH

REV DATE: 08/28/2024 INITIAL: DLH

REV DATE: 11/21/2024 INITIAL: DLH

CONSTRUCTION LIMITS

IN GENERAL, THE CONSTRUCTION LIMITS FOR THE PROJECT SHALL BE DEFINED AS FOLLOWS:

PROPERTY LINES, RIGHT-OF-WAY LINES, EXISTING UTILITY EASEMENT LINES, AND TEMPORARY CONSTRUCTION EASEMENT LINES SHALL BE THE CONSTRUCTION LIMITS UNLESS INDICATED OTHERWISE ON THE DRAWINGS OR FURTHER DEFINED HEREIN.

CONTRACTOR SHALL CONFINE CONSTRUCTION WORK WITHIN THE CONSTRUCTION LIMITS DEFINED.

CONSTRUCTION ACTIVITIES SHALL BE RESTRICTED TO THE CONSTRUCTION LIMITS UNLESS PRIOR APPROVAL IS RECEIVED FROM THE ENGINEER. USE OF CITY LANDS FOR STAGING AREAS, MATERIAL STORAGE, SEDIMENTATION PONDS, DEWATERING, AND/OR TOPSOIL STOCKPILING SHALL ONLY BE WITH PRIOR APPROVAL FROM THE ENGINEER. ANY DAMAGES AND RESTORATION OUTSIDE THE CONSTRUCTION LIMITS SHALL BE AT THE CONTRACTOR'S EXPENSE.

THE CONTRACTOR SHALL NOT OPERATE OR PLACE EQUIPMENT, MATERIALS, OR STOCKPILES ON PRIVATE PROPERTY WITHOUT THE PROPERTY OWNER'S WRITTEN CONSENT. THE CONTRACTOR SHALL FURNISH A COPY OF OWNER'S WRITTEN CONSENT TO THE ENGINEER AND THE OWNER.

EROSION, SEDIMENT, AND WATER POLLUTION CONTROL

A STATE PERMIT IS REQUIRED FOR THIS PROJECT. THE OWNER IS RESPONSIBLE FOR FILING THE NOTICE OF INTENT (NOI) WITH THE SOUTH DAKOTA DEPARTMENT OF AGRICULTURE AND NATURAL RESOURCES (SDDANR) TO OBTAIN COVERAGE UNDER THE SURFACE WATER DISCHARGE GENERAL PERMIT FOR STORM WATER DISCHARGES ASSOCIATED WITH CONSTRUCTION ACTIVITIES. THE CONTRACTOR IS RESPONSIBLE FOR SUBMITTING THE CONTRACTOR AUTHORIZATION FORM IN ORDER TO BE RESPONSIBLE FOR THE DAY TO DAY EROSION AND SEDIMENT CONTROL AND IMPLEMENTATION OF THE STORM WATER POLLUTION PREVENTION PLAN (SWPPP).

EXISTING UTILITIES

LOCATION OF EXISTING UTILITIES SHOWN ON THESE DRAWINGS ARE APPROXIMATE AND WERE TAKEN FROM AVAILABLE RECORDS. PRIOR TO EXCAVATION, THE CONTRACTOR SHALL FIELD VERIFY EXACT LOCATION OF ALL UTILITIES WHETHER OR NOT SHOWN ON THESE DRAWINGS. CONTRACTOR SHALL PROTECT ALL UTILITIES DURING CONSTRUCTION. THE CONTRACTOR SHALL SUPPORT OR TUNNEL UNDER EXISTING UTILITIES IN A MANNER THAT THE EXISTING UTILITIES ARE NOT DAMAGED OR DISTURBED. UNLESS OTHERWISE NOTED, ANY DISTURBANCE OR REPLACEMENT OF EXISTING UTILITIES SHALL BE INCIDENTAL TO THE PROJECT. IF REQUIRED, THE CONTRACTOR SHALL COORDINATE RELOCATION OF UTILITY WITH THE UTILITY OWNER. ALL UTILITIES ARE TO BE ADJUSTED AND/OR RELOCATED BY THE RESPECTIVE UTILITY COMPANIES UNLESS OTHERWISE INDICATED IN THESE DRAWINGS.

EXISTING UTILITY CROSSINGS

REFER TO SPECIFICATIONS FOR CROSSING OF EXISTING STORM SEWERS, SANITARY SEWERS, WATER MAINS, AND WATER MAIN LOWERINGS. AT ALL LOCATIONS WHERE THE PROPOSED UTILITY IMPROVEMENT CROSSES OR IS ADJACENT TO EXISTING STORM SEWERS, SANITARY SEWERS OR WATER MAINS, THE CONTRACTOR SHALL BE RESPONSIBLE FOR SAFEGUARDING THE EXISTING UTILITIES TO ENSURE THAT THE ARE NOT DISTURBED DURING THE WORK. TEMPORARY STRUCTURAL SUPPORT FOR THE UTILITIES MAY BE REQUIRED. NO SEPARATE PAYMENT SHALL BE MADE FOR CROSSED UTILITY PROTECTION. ANY REPAIR WORK NECESSARY TO A CROSSED UTILITY RESULTING FROM THE CONTRACTOR'S ACTIVITY SHALL BE AT THE CONTRACTOR'S EXPENSE.

UTILITY COMPANY NOTIFICATION

THE INFORMATION ON THESE DRAWINGS CONCERNING THE TYPE, SIZE AND LOCATION OF UTILITIES HAS BEEN BASED UPON THE INFORMATION AVAILABLE DURING TOPOGRAPHIC SURVEYS. SIZE AND TYPE OF UTILITIES WAS PROVIDED BY THE UTILITY OWNER. THE CONTRACTOR SHALL BE RESPONSIBLE FOR PROTECTING ALL EXISTING UTILITIES IN PLACE UNLESS THEY ARE SCHEDULED FOR RELOCATION. THE CONTRACTOR SHALL COORDINATE ALL WORK WITH THE UTILITY COMPANIES. NO ADDITIONAL PAYMENT WILL BE MADE FOR THIS WORK.

THE CONTRACTOR SHALL UTILIZE THE SOUTH DAKOTA ONE CALL NOTIFICATION PROCESS TO PROVIDE ADVANCE NOTICE OF AT LEAST 48 HOURS, EXCLUDING WEEKENDS AND HOLIDAYS, TO INFORM ALL SOUTH DAKOTA UNDERGROUND FACILITY OPERATORS OF INTENDED EXCAVATION. THE CONTRACTOR SHALL CONTACT ALL UTILITY COMPANIES BEFORE WORK IS COMMENCED.

SOUTH DAKOTA ONE CALL
1-800-781-7474

MATERIAL STOCKPILE IDENTIFICATION

THE CONTRACTOR SHALL CLEARLY IDENTIFY MATERIAL STOCKPILES SO THAT MATERIAL TYPES AND USES ARE CLEARLY IDENTIFIED, FOR EXAMPLE BEDDING, GRAVEL CUSHION, BASE COURSE, AND CUSHION GRAVEL FOR SIDEWALK, ETC...

MATERIAL TICKET SUBMITTALS AND STOCKPILES

THE CONTRACTOR SHALL SUBMIT ALL TICKETS FOR MEASUREMENT AND PAYMENT TO THE INSPECTOR WITHIN 48 HOURS. ANY TICKET RECEIVED LATER THAN 48 HOURS WILL NOT BE ACCEPTED AND PAYMENT FOR THAT ITEM WILL NOT BE MADE. ALL TICKETS SHALL ACCOMPANY THE MATERIAL TO THE SITE. NO HAND WRITTEN TICKETS SHALL BE ALLOWED.

THE CONTRACTOR SHALL CLEARLY IDENTIFY MATERIALS FOR VARIOUS PRODUCTS USED ON THE PROJECT, SUCH AS: BEDDING, GRAVEL SURFACING, ETC.

WASTE DISPOSAL

THE CONTRACTOR WILL BE RESPONSIBLE FOR ALL WASTE DISPOSAL ON THE PROJECT. THE CONTRACTOR SHALL FURNISH THE DISPOSAL SITE FOR THIS WORK AND THE LOCATION MUST BE APPROVED BY THE ENGINEER. NO WASTE DISPOSAL IS ALLOWED WITHIN RIGHT OF WAY OR EASEMENTS. NO PAYMENT WILL BE MADE FOR WASTE DISPOSAL.

WASTE DISPOSAL SITE

ALL MATERIAL GENERATED BY THIS PROJECT MUST BE DISPOSED OF AT A PERMITTED SITE. DEPENDING ON WHAT MATERIAL IS GENERATED AND WHETHER IT IS CONTAMINATED OR UNCONTAMINATED WILL DETERMINE WHICH PERMITTED FACILITY CAN ACCEPT IT. PERMITTED FACILITIES INCLUDE CONSTRUCTION AND DEMOLITION DEBRIS SITES, RESTRICTED USE SITES, AND REGIONAL LANDFILLS. CONTACT SD DANR WASTE MANAGEMENT PROGRAM AT 605-773-3153 TO IDENTIFY LOCALLY PERMITTED DISPOSAL SITES FOR VARIOUS CATEGORIES OF CONTAMINATED AND UNCONTAMINATED MATERIALS.

TRAFFIC CONTROL

THE UTILITY IMPROVEMENTS IN THESE PLANS SHALL BE INSTALLED IN CONJUNCTION WITH THE SDDOT PROJECT NH 0014(185)229 U.S. HIGHWAY 14. TRAFFIC CONTROL AND PROJECT PHASING SHALL BE PER SECTION C OF THE AFOREMENTIONED PLANS.

TOPSOIL

PRIOR TO EXCAVATING FOR THE WATER OR SEWER PIPE, THE CONTRACTOR SHALL STRIP AND STOCKPILE THE TOPSOIL. THE TOPSOIL SHALL BE STRIPPED TO DEPTHS NECESSARY TO PROVIDE A DEPTH OF FOUR INCHES OF TOPSOIL AT COMPLETION. THE TOPSOIL SHALL BE PLACED BACK OVER THE DISTURBED AREAS TO A DEPTH OF FOUR INCHES. CONTRACTOR SHALL UTILIZE THE CONSTRUCTION SURVEY TO MEASURE TOPSOIL STOCKPILE FOR QUANTITY PURPOSES.

SAW CUTTING PAVEMENT

SAW CUTTING SHALL INCLUDE AN INITIAL SAW CUT AND FINAL SAW CUT FOR PCC PAVEMENT, CURB, GUTTER, AND SIMILAR STRUCTURES WHERE PORTIONS OF THE EXISTING STRUCTURES ARE TO BE LEFT IN THE FINISHED WORK.

AREAS TO BE REMOVED ARE SHOWN ON THE DRAWINGS. THESE AREAS REPRESENT THE FINAL SAW CUT AND REMOVAL LIMITS. THE FIRST SAW CUT SHALL BE MADE AT LEAST 1 FOOT INSIDE OF THE LINES SHOWN. ALL SAW CUTTING SHALL BE CONSIDERED AS INCIDENTAL AND WILL BE PAID FOR AT THE LUMP SUM CONTRACT PRICE FOR "INCIDENTAL WORK".

TRENCH EXCAVATION AND BACKFILL

THE CONTRACTOR SHALL BE RESPONSIBLE FOR MAINTAINING A SAFE EXCAVATION COMPLYING WITH APPLICABLE STATE AND FEDERAL REGULATIONS. IT IS POSSIBLE THAT IN SOME AREAS SPECIAL FOUNDATIONS MAY BE REQUIRED TO PROVIDE ADEQUATE SUPPORT FOR THE PIPE. SUCH FOUNDATIONS WILL CONSIST OF SUB-EXCAVATION TO A DEPTH AS REQUIRED BY THE ENGINEER AND PLACEMENT OF TYPE 2 OR TYPE 3 FOUNDATION MATERIAL. A QUANTITY OF 100 CUBIC YARDS OF EACH HAS BEEN INCLUDED IN THE BID TO ESTABLISH A BID PRICE, THESE ITEMS SHALL ONLY BE USED IF DIRECTED BY THE OWNER.

IMPORTED TRENCH BACKFILL MAY BE AUTHORIZED FOR SOFT OR UNSUITABLE MATERIALS DESIGNATED BY THE ENGINEER. IMPORTED TRENCH BACKFILL IS NOT DESIGNATED OR INTENDED TO BE USED FOR REPLACEMENT OF FROZEN OR WET MATERIALS OR HARD SHALE MATERIAL OR OTHER MATERIAL THAT MAY REQUIRE PROCESSING. NO ADDITIONAL PAYMENT WILL BE MADE FOR PROCESSING OF BACKFILL MATERIAL.

"IMPORTED TRENCH BACKFILL" QUANTITIES WILL BE DETERMINED BY COUNTING TRUCK LOADS. THE QUANTITY OF MATERIAL EACH TRUCK HOLDS SHALL BE AGREED UPON BY THE ENGINEER AND CONTRACTOR PRIOR TO ANY HAULING OPERATIONS. THE CONTRACTOR SHALL NOT BE PAID FOR TRENCH WIDTHS GREATER THAN FOUR (4) FEET (OR THE MAXIMUM TRENCH WIDTH, WHICHEVER IS GREATER). PAYMENT FOR IMPORT BACKFILL WILL NOT BE MADE FOR VOLUMES OF THE TRENCH IN WHICH GRANULAR BEDDING, AND FOUNDATION MATERIAL IS PLACED. IMPORT BACKFILL WILL NOT BE PAID FOR WHEN THE CONTRACTOR FAILS TO PERFORM PROPER DEWATERING TECHNIQUES PER THE ENGINEER'S REQUEST.

SELECT BEDDING MATERIAL IS REQUIRED FROM 3 INCHES ABOVE THE PIPE CROWN TO 12 INCHES ABOVE THE PIPE CROWN. SELECT BEDDING MATERIAL MAY INCLUDE LOAM, CLAY, SAND, AND GRAVEL, BUT SHALL BE FREE OF CINDER, ASHES, REFUSE, ORGANIC MATTER, ROCK OR MATERIAL DETERMINED UNSUITABLE BY THE ENGINEER. NO MATERIAL LARGER THAN ONE (1) INCH IN SIZE SHALL BE PERMITTED. FROZEN MATERIAL SHALL NOT BE USED.

STONES AND ROCKS UP TO 12 INCHES IN THEIR LONGEST DIMENSION MAY BE INCLUDED IN THE BACKFILL GREATER THAN 24 INCHES ABOVE THE PIPE.

TRENCH CHECK DAM

CONTRACTOR SHALL PLACE WITHIN THE TRENCH A COMPACTED COHESIVE CLAY CHECK DAM. DURING CONSTRUCTION, CHECK DAM LOCATIONS MAY BE MOVED DUE TO FIELD CONDITIONS. THE CHECK DAM SHALL EXTEND FROM THE BOTTOM OF THE EXCAVATION THROUGH THE BEDDING MATERIAL TO THE BACKFILL AND SHALL EXTEND COMPLETELY TO EACH TRENCH SIDEWALL. THE CHECK DAM IS USED AS A MEANS TO PREVENT THE CONVEYANCE OF WATER THROUGH THE TRENCH BEDDING. COMPACTED COHESIVE CLAY SHALL CONSIST OF MATERIAL THAT CONTAINS A MINIMUM OF 25% MINUS NO. 200 SIEVE MATERIAL WITH 70% PASSING A 3/4" SIEVE AND A PI OF 10%. THE MATERIAL SHALL CONSIST OF CLAY, SILTY SAND OR SILTY CLAY. IF THE NORMAL EXCAVATED MATTER IS NOT SUITABLE FOR CONSTRUCTION OF THE CHECK DAM THEN THE CONTRACTOR SHALL OBTAIN MATERIAL FROM OUTSIDE SOURCES. CHECK DAM INSTALLATION AND MATERIAL SHALL BE CONSIDERED AS INCIDENTAL TO THE PIPE INSTALLATION.

PVC WATER MAIN PIPE

PIPE FOR WATER MAINS SHALL BE PVC PRESSURE PIPE AND SHALL CONFORM TO AWWA SPECIFICATIONS C-900 FOR ALL WATER MAIN PIPING. THE PIPE SHALL MEET ALL OTHER REQUIREMENTS SPECIFIED IN THE SPECIFICATIONS. BEDDING MATERIAL SHALL BE INCIDENTAL TO THE BID UNIT PRICE FOR "X" PVC WATER MAIN."

PVC WATER MAIN FITTINGS

WATER MAIN FITTINGS SHALL BE PVC AND SHALL BE SPECIFIED FOR USE IN PRESSURE SYSTEMS. THE FITTINGS SHALL MEET ALL OTHER REQUIREMENTS SPECIFIED IN THE SPECIFICATIONS.

WATER MAIN ABANDONMENT

THE CONTRACTOR SHALL REMOVE THE EXISTING MAIN OR ANY ASSOCIATED VALVES AND FITTINGS NECESSARY TO COMPLETE THE PROJECT. WATER MAIN REMOVAL SHALL BE INCIDENTAL TO THE PROJECT AND PAID FOR AT THE CONTRACT UNIT PRICE PER LUMP SUM FOR BID ITEM "INCIDENTAL WORK".

WHERE SHOWN IN THE PLANS EXISTING WATER MAIN SHALL BE ABANDONED. WATER MAIN ABANDONMENT SHALL BE COMPLETED BY PLACING FLOWABLE FILL IN THE ABANDONED WATER MAIN. WATER MAIN ABANDONMENT SHALL BE PAID FOR AT THE BID UNIT PRICE PER FOOT FOR THE BID ITEM "ABANDON WATER MAIN". ALL CAPS REQUIRED FOR ABANDONMENT SHALL BE INCIDENTAL TO THE BID ITEM "ABANDON WATER MAIN".

VALVES LOCATED ON ABANDONED WATER MAINS SHALL BE REMOVED AND ALL COSTS ASSOCIATED WITH THE REMOVAL SHALL BE INCIDENTAL TO THE BID ITEM "ABANDON WATER MAIN".

WATER MAIN INSTALLATION

PRIOR TO INSTALLATION OF WATER MAIN THE CONTRACTOR SHALL VERIFY DEPTH, SIZE, AND LOCATION OF THE EXISTING WATER SERVICES. WATER MAIN PIPING MATERIALS, INSTALLATION, FLUSHING, AND TESTING SHALL CONFORM TO THE PROJECT SPECIFICATIONS.

REMOVE EXISTING CURB STOPS AND BOXES

CURB STOPS AND BOXES ARE SCHEDULED FOR REPLACEMENT ON THIS PROJECT. THE LOCATION AND QUANTITIES ARE IDENTIFIED ON THE CONSTRUCTION DRAWINGS.

AT THOSE LOCATIONS IDENTIFIED, NEW CURB STOPS AND BOXES SHALL BE INSTALLED TO REPLACE THE EXISTING CURB STOPS AND BOXES. THE EXISTING WATER SERVICE LINES TO THE RESIDENCE SIDE SHALL BE CONNECTED TO THE NEW CURB STOP. THE CONTRACTOR SHALL FURNISH AND INSTALL COUPLINGS AS NECESSARY. PAYMENT FOR FURNISHING AND INSTALLING COUPLINGS, FURNISHING AND INSTALL CORPORATION STOPS, AND FURNISHING AND INSTALLING TAPPING SADDLES SHALL BE PAID FOR AT THE CONTRACT UNIT PRICE PER EACH FOR THE BID ITEM "RECONNECT WATER SERVICE".

REMOVE EXISTING BENDS, TEES AND REDUCERS

THE CONTRACTOR SHALL REMOVE EXISTING BENDS, TEES AND REDUCERS AS IDENTIFIED IN THE CONSTRUCTION DRAWINGS. THE REMOVAL OF SUCH BENDS, TEES AND REDUCERS SHALL BE INCIDENTAL TO THE PROJECT.

WATER SERVICE RECONNECTIONS

THE CONTRACTOR SHALL INSTALL A TAPPING SADDLE AND A CORPORATION STOP FOR EACH SERVICE LINE RECONNECTION. THE CITY OF PIERRE AND/OR THEIR REPRESENTATIVE SHALL BE PRESENT WHEN WATER SERVICE LINES ARE TAPPED. THE CONTRACTOR SHALL INSTALL POLY/PEX SERVICE LINE FROM THE CORPORATION STOP TO THE EXISTING SERVICE LINE WITH AN APPROVED COUPLER. IN CASES WHERE THE CURB STOP IS BEING REPLACED, THE WATER SERVICES SHALL BE FITTED WITH A MUELLER SERIES 300 ELECTRICAL INSULATOR AT THE CURB STOP PRIOR TO CONNECTION TO THE EXISTING SERVICE LINE. TRACER WIRE WILL BE REQUIRED ON ALL NEWLY INSTALLED SERVICE LINES.

CORROSION PROTECTION

WHERE IRON WATER MAIN APPURTENANCES ARE INSTALLED THE CONTRACTOR SHALL ENCASE THE APPURTENANCE WITH 8-MIL THICKNESS SHEET POLYETHYLENE MEETING AWWA C-105. JOINT TAPE FOR ENCASEMENT SHALL BE 3M SCOTCHWRAP 50, OR EQUAL.

TRACER WIRE SYSTEM

A TRACER WIRE SYSTEM SHALL BE INSTALLED IN ACCORDANCE MINNESOTA RURAL WATER ASSOCIATION. PAYMENT FOR FURNISHING AND INSTALLING THE TRACER WIRE SYSTEM SHALL BE INCIDENTAL TO THE UNIT BID PRICE FOR THE ASSOCIATED WATER MAIN PIPE AND FITTINGS. NO SEPARATE PAYMENT SHALL BE MADE. TRACER WIRE BOXES SHALL BE AT THE CONTRACT UNIT PRICE PER EACH FOR "TRACER WIRE ACCESS BOX, TYPE 1".

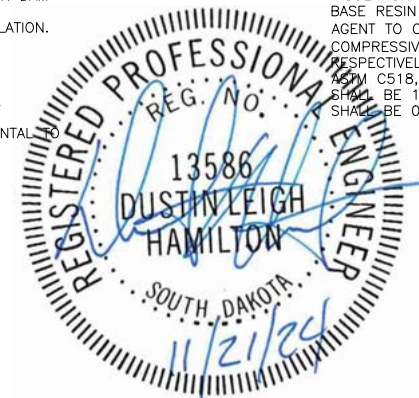
PIPE ENCASEMENT

CONCRETE ENCASEMENT SHALL MEET THE FOLLOWING:

THE CONTROLLED LOW STRENGTH MATERIAL FOR THE CONCRETE ENCASEMENT SHALL COMPLY WITH THE PROJECT SPECIFICATIONS. PIPE ENCASEMENT SHALL BE PLACED AS INDICATED IN THE PLANS. PIPE ENCASEMENT SHALL BE INCIDENTAL TO THE BID UNIT PRICE FOR "X" PVC WATER MAIN".

WATER INSULATION

INSULATION SHALL BE EXTRUDED-POLYSTYRENE BOARD INSULATION FORMED FROM POLYSTYRENE BASE RESIN BY AN EXTRUSION PROCESS USING HYDROCHLORO-FLUOROCARBONS AS BLOWING AGENT TO COMPLY WITH ASTM C578, TYPE IV, WITH 1.60 LB./CU. FT. MINIMUM DENSITY AND A COMPRESSIVE STRENGTH OF 25 LB./SQ. IN. AS SPECIFIED IN ASTM D1622 AND ASTM D1621 RESPECTIVELY. THE MAXIMUM THERMAL CONDUCTIVITY OF THE INSULATION SHALL CONFORM TO ASTM C518, C177, AND C578. THE MAXIMUM WATER ABSORPTION PERCENTAGE BY VOLUME SHALL BE 1% IN ACCORDANCE WITH ASTM D2842. THE RANGE OF WATER VAPOR PERMEANCE SHALL BE 0.4 TO 1.0 PERM IN ACCORDANCE WITH ASTM E96.



REV DATE: 11/21/2024 INITIAL: DLH	STATE OF SOUTH DAKOTA	PROJECT	SHEET	TOTAL SHEETS
		X05W	D.3	D.6

REV DATE: 04/23/2024 INITIAL: DLH

REV DATE: 08/28/2024 INITIAL: DLH

TYPE IV STYROFOAM BRAND "SQUARE EDGE" OR "SCORE EDGE" AS MANUFACTURED BY DOW CHEMICAL COMPANY OR APPROVED EQUAL SHALL BE USED FOR INSULATING WATER PIPE WHERE REQUIRED. THE WIDTH AND THICKNESS OF INSULATION SHALL BE AS NOTED IN THE PLANS. THE MINIMUM INSULATION THICKNESS SHALL NOT BE LESS THAN 2 INCHES. WATER MAIN/WATER SERVICE LINE INSULATION SHALL BE INCIDENTAL TO THE WATER MAIN/WATER SERVICE INSTALLATION BID ITEMS.

DISINFECTION OF WATER MAINS

WATER MAIN WITH DIAMETERS SMALLER THAN 18" SHALL BE DISINFECTED PER THE PROJECT SPECIFICATIONS.

NEUTRALIZATION OF CHLORINATED WATER

FOLLOWING DISINFECTION, WATER WITH HIGH CHLORINE CONTENT SHALL BE NEUTRALIZED BY TREATING IT WITH A REDUCTION AGENT. THE CONTRACTOR WILL BE RESPONSIBLE FOR DISPOSAL OF HEAVILY CHLORINATE WATER SUCH THAT RESIDUAL LEVELS OF CHLORINE IN THE DISCHARGE WATER DO NO EXCEED 0.05 MG/L. ALL COSTS ASSOCIATED WITH NEUTRALIZATION OF CHLORINATED WATER SHALL BE INCIDENTAL TO THE INSTALLATION OF WATER MAIN.

WATER SERVICE AND TEMPORARY WATER SYSTEM

THE CONTRACTOR IS RESPONSIBLE FOR MAINTAINING WATER SERVICE TO ALL AFFECTED PROPERTIES THROUGHOUT THE DURATION OF THE PROJECT. THE CONTRACTOR SHALL BE RESPONSIBLE FOR DETERMINING HOW WATER SERVICE SHALL BE MAINTAINED. THE CONTRACTOR SHALL SUBMIT PLANS FOR MAINTAINING WATER SERVICE TO THE ENGINEER FOR REVIEW AND APPROVAL. ALL EQUIPMENT, LABOR AND MATERIALS NECESSARY TO MAINTAIN WATER SERVICE SHALL BE PAID FOR AT THE CONTRACT UNIT PRICE FOR "TEMPORARY WATER SERVICE".

TEMPORARY WATER SYSTEMS SHALL BE PROTECTED FROM TRAFFIC WHEN INSTALLED IN AREAS WHERE THEY ARE EXPOSED TO VEHICULAR TRAFFIC. ALL COSTS ASSOCIATED WITH PROTECTION OF THE SYSTEM FROM TRAFFIC SHALL BE PAID FOR AT THE CONTRACT UNIT PRICE FOR "TEMPORARY WATER SERVICE."

SECTIONS OF NEW WATER MAINS WILL BE CONSTRUCTED IN THE SAME LOCATION AS EXISTING WATER MAINS. THE CONTRACTOR SHALL PROVIDE TEMPORARY WATER SERVICE TO ANY PROPERTY IMPACTED BY UTILITY REPLACEMENT WORK. WATER SERVICE SHALL BE PROVIDED TO ALL IMPACTED PROPERTIES WITH ONLY SHORT DURATION OUTAGES (TWO HOURS OR LESS) ALLOWED FOR INSTALLATION OF TEMPORARY PIPE AND FITTINGS.

ALL COMPONENTS, SUCH AS TEMPORARY PIPE, FITTINGS, AND VALVES REQUIRED TO MAKE THE TEMPORARY CONNECTION, SHALL BE EQUAL TO OR GREATER IN SIZE THAN EXISTING SERVICE LINE PIPING. ALL TEMPORARY WATER PIPING 4" DIA. OR LARGER SHALL BE RESTRAINED C-900 CERTA-LOK C900/RJ, DIAMOND LOC, OR APPROVED EQUAL. PRIOR TO DISCONNECTING ANY WATER SERVICES, THE CONTRACTOR SHALL VERIFY SERVICE LINE SIZE, MATERIAL, AND CONNECTION DETAILS. TIMING OF SHORT DURATION OUTAGES SHALL BE COORDINATED WITH THE IMPACTED PROPERTY OWNER OR AUTHORIZED REPRESENTATIVE.

THE CONTRACTOR SHALL TAKE CARE TO PROTECT THE TEMPORARY WATER SYSTEM FROM FREEZING DURING COLD WEATHER. ALL COSTS ASSOCIATED WITH FREEZE PROTECTION SHALL BE INCLUDED IN THE CONTRACT UNIT PRICE FOR "TEMPORARY WATER SERVICE".

ALL COSTS ASSOCIATED WITH PROVIDING TEMPORARY WATER SERVICE TO PROPERTIES IMPACTED BY WATER MAIN REPLACEMENT SHALL BE PAID FOR BY THE CONTRACT UNIT PRICE FOR "TEMPORARY WATER SERVICE".

SANITARY SEWER MAIN

THE CITY OF PIERRE WILL COMPLETE VIDEO INSPECTION OF THE SEWER MAIN TWICE FOR THE PROJECT - ONCE PRIOR TO THE START OF CONSTRUCTION ACTIVITIES AND ONCE AFTER THE EARTHWORK IS COMPLETE, PRIOR TO FINAL SURFACING. THE CONTRACTOR SHALL NOTIFY THE CITY 48 HOURS BEFORE VIDEO INSPECTIONS ARE TO BE CONDUCTED. CONTRACTOR SHALL CONTACT JOSH BIBLE (605-773-7448 / JOSH.BIBLE@CI.PIERRE.SD.US) TO SCHEDULE THE VIDEO INSPECTIONS.

PRIOR TO INSTALLATION OF SANITARY SEWER MAIN THE CONTRACTOR SHALL VERIFY DEPTH, SIZE, AND LOCATION OF THE EXISTING SANITARY SEWER SERVICES. SANITARY SEWER MAIN SHALL BE FURNISHED AND INSTALLED IN ACCORDANCE WITH THE PROJECT SPECIFICATIONS. BEDDING MATERIAL SHALL BE INCIDENTAL TO THE BID UNIT PRICE FOR "X" PVC SEWER PIPE."

A QUANTITY OF 200 LF OF "8" PVC SEWER PIPE" HAS BEEN INCLUDED IN THE ESTIMATE OF QUANTITIES. THIS QUANTITY IS TO BE USED FOR SEWER MAIN INADVERTENTLY DAMAGED DURING STANDARD GRADING ACTIVITIES CONDUCTED IN A WORKMANLIKE MANNER ASSOCIATED WITH SUBGRADE REMOVAL, SUBGRADE PREPARATION, AND BASE COURSE PLACEMENT FOR THE SDDOT US 14 HIGHWAY RECONSTRUCTION PROJECT. SERVICE LINES DAMAGED DUE TO CONTRACTOR'S CARELESSNESS OR NEGLIGENCE DURING ANY PORTION OF THE PROJECT (UTILITY INSTALLATION, GRADING, ETC.) SHALL BE REPLACED AT THE CONTRACTOR'S EXPENSE.

CONNECT TO EXISTING SEWER MAIN

THE CONTRACTOR SHALL VERIFY THE LOCATION AND ELEVATION OF EXISTING SANITARY SEWER MAINS AT THE PROPOSED CONNECTION TO NEW SANITARY SEWER MAINS. THE CONTRACTOR SHALL INFORM THE ENGINEER OF THE LOCATION AND ELEVATION PRIOR TO CONSTRUCTION OF NEW SANITARY SEWER MAIN OR MANHOLES. ALL LABOR, MATERIALS, FITTINGS AND INCIDENTALS REQUIRED TO LOCATE THE EXISTING SEWER MAIN AND CONNECT TO THE EXISTING SEWER MAIN SHALL BE INCIDENTAL TO THE CONTACT UNIT PRICE PER EACH FOR "CONNECT TO EXISTING SEWER MAIN".

SANITARY SEWER SERVICE

THE CONTRACTOR SHALL VERIFY EXISTING SANITARY SEWER SERVICE LINES ARE INTACT BY VIDEO INSPECTION. VIDEO INSPECTION SHALL BE COMPLETED TWICE - ONCE PRIOR TO THE START OF CONSTRUCTION ACTIVITIES AND ONCE AFTER THE EARTHWORK IS COMPLETE, PRIOR TO FINAL SURFACING. THE VIDEO INSPECTION SHALL ONLY BE COMPLETED ON THE SERVICE LINE FROM THE SANITARY SEWER MAIN TO THE PROPERTY LINE. ALL TIME AND MATERIALS NEEDED TO COMPLETE VIDEO INSPECTION SHALL BE PAID FOR AT THE CONTRACTOR UNIT PRICE PER FOOT FOR BID ITEM "SANITARY SEWER VIDEO INSPECTION".

THE CONTRACTOR SHALL VERIFY THE LOCATION, SIZE AND ELEVATION OF EXISTING SANITARY SEWER SERVICE LINES PRIOR TO BEGINNING CONSTRUCTION OF THE SANITARY SEWER MAIN FROM SIOUX AVENUE TO PLEASANT STREET. SANITARY SEWER SERVICES SHALL BE REPLACED TO THE PROPERTY LINE OR AS SHOWN IN THE UTILITY PLANS. SANITARY SEWER SERVICES SHALL BE CONNECTED TO THE NEW SANITARY SEWER MAIN. CONTRACTOR SHALL INSTALL A CLEAN OUT THE SIZE OF THE SERVICE AT THE CONNECTION TO THE EXISTING SERVICE LINE. ALL MATERIALS, LABOR AND INCIDENTALS ASSOCIATED WITH RECONNECTING SANITARY SERVICES TO THE MAIN INCLUDING BUT NOT LIMITED TO ANY TIME AND MATERIALS NEEDED DUE TO

CONSTRUCTION PHASING (CAPS, BACKFILLING, EXCAVATION, ETC.) AND INSTALLATION OF INLINE TEES AND CLEANOUTS SHALL BE PAID FOR AT THE CONTRACT UNIT PRICE PER EACH FOR "RECONNECT SANITARY SEWER SERVICE".

INSTALLATION FOR THE SERVICE LINE PIPE SHALL BE PAID FOR AT THE CONTRACTOR UNIT PRICE PER FOOT FOR "4" SEWER SERVICE" AND "6" SEWER SERVICE". AN ADDITIONAL QUANTITY OF 1,000 FT 4" SEWER SERVICE PIPE AND 20 RECONNECT SEWER SERVICE HAVE BEEN INCLUDED IN THE ESTIMATE OF QUANTITIES. THESE QUANTITIES ARE TO BE USED FOR SEWER SERVICES FOUND TO BE LOCATED WITHIN THE ELEVATION OF THE STANDARD GRADING ACTIVITIES ASSOCIATED WITH SUBGRADE REMOVAL, SUBGRADE PREPARATION, AND BASE COURSE PLACEMENT FOR THE SDDOT US 14 HIGHWAY RECONSTRUCTION PROJECT. SERVICE LINES DAMAGED DUE TO MEANS AND METHODS OF THE CONTRACTOR DURING ANY PORTION OF THE PROJECT (UTILITY INSTALLATION, GRADING, ETC.) SHALL BE REPLACED AT THE CONTRACTOR'S EXPENSE.

SANITARY SEWER REMOVAL

WHERE CALLED OUT IN THE PLANS, EXISTING SANITARY SEWER MANHOLES SHALL BE COMPLETELY REMOVED. MANHOLE REMOVAL WILL BE PAID ON A PER EACH BASIS AND INCLUDES ALL EQUIPMENT, LABOR AND MATERIALS TO REMOVE AND DISPOSE OF EACH MANHOLE.

REMOVAL OF SEWER MAINS AND SERVICES SHALL BE INCIDENTAL TO THE INSTALLATION OF THE NEW MAINS AND SERVICES.

SANITARY SEWER BYPASS GENERAL NOTES

WHERE EXISTING FLOW CANNOT BE MAINTAINED, INTERRUPTION OF SERVICE SHALL BE MINIMIZED SUCH THAT NO DISCHARGE OF SANITARY SEWAGE TO ANY NATURAL WATERWAY, STORM SEWER, OPEN TRENCH, GROUND SURFACE, STREETS OR GUTTERS OCCURS NOR SHALL SUCH INTERRUPTION CREATE A PUBLIC HEALTH HAZARD FROM SEWAGE BACKUPS OR OVERFLOWS. BYPASS OPERATIONS MUST BE APPROVED BY THE OWNER AND ENGINEER BEFORE STARTING. CONTRACTOR SHALL PROVIDE A DETAILED WRITTEN PLAN, INCLUDING A DRAWING, OF HOW THE BYPASS OPERATION WILL BE PERFORMED, FOR APPROVAL, BEFORE OR AT THE PRECONSTRUCTION MEETING AND AT LEAST TWO WEEKS PRIOR TO THE OPERATION.

THE BYPASS SYSTEM SHALL BE OF SUFFICIENT CAPACITY TO HANDLE PEAK FLOW OF THE PIPE. PEAK FLOWS FOR THE BLOCK OF SOUTH PIERRE STREET FROM SIOUX AVENUE TO PLEASANT DRIVE ARE 3.5 CFS. FLOWS WERE CALCULATED BASED ON DEPTHS MEASURED BY THE CITY OF PIERRE IN NOVEMBER OF 2023. CITY ALSO INDICATED THAT PEAK FLOWS OCCUR AT THE WASTEWATER TREATMENT PLANT BETWEEN 8:30 A.M.-10 A.M. AND 5 P.M.-7 P.M.

CONTRACTOR SHALL PROVIDE THE NECESSARY LABOR AND SUPERVISION TO SET UP AND OPERATE THE BYPASSING SYSTEM. CONTRACTOR SHALL COMPLY WITH CITY SOUND ORDINANCE AND OBTAIN A NOISE PERMIT IF PUMPING IS REQUIRED BETWEEN THE HOURS OF 10:00 P.M. AND 6:00 A.M. PUMPING EQUIPMENT SHALL BE MANNED CONTINUOUSLY. DURING BYPASS PUMPING OPERATIONS, THE CONTRACTOR SHALL PROVIDE THE NECESSARY LABOR TO CONTINUALLY MONITOR THE OPERATION AND ENSURE UNINTERRUPTED AND SUFFICIENT PUMPING AT ALL TIMES.

BYPASS PUMPING EQUIPMENT SHALL INCLUDE PUMPS, CONDUITS, ENGINES, AND RELATED EQUIPMENT NECESSARY TO DIVERT THE FLOW OF SEWAGE AROUND THE SECTION IN WHICH THE WORK IS TO BE PERFORMED. IN ADDITION, THE CONTRACTOR SHALL MAINTAIN AT THE SAME LOCATION AND IN OPERABLE CONDITION, DUPLICATE EQUIPMENT TO BE USED IN CASE THERE IS EQUIPMENT FAILURE. IN THIS EVENT, THE CONTRACTOR SHALL PROMPTLY REPAIR OR REPLACE THE FAILED EQUIPMENT TO THE SATISFACTION OF THE ENGINEER.

MANHOLES AND/OR SUMPS OPENED FOR USE AS SUCTION OF DISCHARGE POINTS MUST BE KEPT SEALED TO PREVENT ODORS FROM ESCAPING. EACH PUMP SETUP SHALL MEET THE FOLLOWING NOISE REQUIREMENT AS MEASURED ON THE DBA SCALE AT THE MEASURED DISTANCE FROM THE SUCTION POINT: 85 DBA AT 23 FEET.

IF ACCESS INTO EXISTING CONCRETE MANHOLES REQUIRES REMOVAL OF THE CONE, ALL COSTS FOR REMOVING AND REINSTALLING THE CONCRETE CONE SHALL BE INCLUDED IN THE LUMP SUM PRICE FOR "SANITARY SEWER TEMPORARY BYPASS PUMPING", INCLUDING BUT NOT LIMITED TO REINSTALLING THE CONE TO PROPER ELEVATION, CONNECTION TO THE EXISTING MANHOLE TO SUPPORT H-20 LOADING, AND REPAIRING THE HDPE LINER JOINT TO ENSURE UNIFORM MATERIAL.

THE CONTRACTOR SHALL INSTALL A BYPASS PIPE WITH A MINIMUM OF 3' OF COVER ACROSS SIOUX AVENUE AS THIS STREET CANNOT BE CLOSED. THE APPROXIMATE LOCATION IS SHOWN ON SHEET I.21. AFTER BYPASS PUMPING IS COMPLETE AND PIPING HAS BEEN CLEANED, IT CAN BE CAPPED AND LEFT IN PLACE.

SANITARY SEWER BYPASS FLOW MONITORING

FLOW METERING ON THE DISCHARGE LINES FROM THE BYPASS SYSTEM(S) SHALL BE PROVIDED. THE FLOW METER IS TO HAVE A LOCAL READOUT (LCD OR APPROVED) AND LOG DATE TO ALLOW FOR VIEWING INSTANTANEOUS PEAK, DAILY AND MONTHLY FLOWS WITH AN ACCURACY OF +/-5%.

PUMP SUCTION AND DISCHARGES SHALL BE PROVIDED WITH PRESSURE/VACUUM GAUGES. THESE ARE TO BE OPERABLE AND ACCURATE THROUGHOUT THE BYPASS PERIOD. IF A GAUGE FAILS, REPLACE IMMEDIATELY. THE CONTRACTOR SHALL KEEP SPARE GAUGES ON SITE AT ALL TIMES.

SANITARY SEWER BYPASS DISCHARGE PIPING

DISCHARGE PIPING MUST BE ADEQUATE FOR THIS APPLICATION AND DESIGNED FOR THE SAFETY OF NEARBY STRUCTURES, EQUIPMENT, AND PEOPLE.

BYPASS PIPING SHALL BE BURIED OR COVERED BY RAMPS WHERE THE PIPE CROSSES THE SIDEWALK, DRIVEWAYS, ROADS OR PEDESTRIAN CROSSINGS. RAMPS SHALL BE CONSTRUCTED TO SUPPORT VEHICLE LOADING WITHOUT DAMAGE TO THE DISCHARGE PIPING. THE CONTRACTOR SHALL MONITOR DRAINAGE OF AREAS SERVED BY STORM SEWER AND PROVIDE ADDITIONAL DRAINAGE PROTECTION MEASURES, SUCH AS TEMPORARY PUMPING OF TRAPPED WATER. CONTROL OF DRAINAGE SHALL BE INCIDENTAL TO THE PROJECT. BURYING BYPASS DISCHARGE PIPE, PLACING MILLINGS OVER THE TOP OF BUILDING A RAMP OVER DISCHARGE PIPING SHALL BE INCIDENTAL TO "BYPASS PUMPING".

SANITARY SEWER BYPASS HYDROTESTING

THE BYPASS SYSTEM SHALL BE HYDROTESTED AT 50 PSI PRIOR TO COMMENCING BYPASSING. ALL COSTS FOR HYDROTESTING SHALL BE CONSIDERED INCIDENTAL TO THE "BYPASS PUMPING" LUMP SUM BID ITEM. THE SYSTEM SHALL HOLD THE PRESSURE FOR A MINIMUM OF ONE (1) HOUR WITHOUT DROPPING MORE THAN 5 PSI. IF PRESSURE DROPS MORE THAN 5 PSI TEST WILL CONTINUE AT ENGINEER'S DISCRETION OR CONTRACTOR MUST DRAIN THE LINE AND RETEST AFTER REPAIRS HAVE BEEN MADE.

SANITARY SEWER BYPASS DISCHARGE PIPE FLUSHING

FITTINGS SHALL BE PROVIDED ON DISCHARGE PIPING TO ACCOMMODATE FLUSHING AFTER USE. ALL COSTS FOR FLUSHING BYPASS DISCHARGE PIPE SHALL BE CONSIDERED INCIDENTAL TO THE "BYPASS PUMPING" LUMP SUM BID ITEM. DISCHARGE PIPES SHALL BE FLUSHED AFTER EACH USE BEFORE THEY CAN BE MOVED.

AT NO TIME SHALL THE CONTRACTOR ALLOW DISCHARGE OF GREASE OR GRIT FROM THE BYPASS DISCHARGE PIPING TO ANY NATURAL WATERWAY, STORM SEWER, OPEN TRENCH, GROUND SURFACE, STREETS OR GUTTERS. THE FLUSHING OPERATION SHALL BE MONITORED TO ENSURE ALL CONTENTS ARE REMOVED FROM THE PIPE AND DIRECTED INTO THE SANITARY SEWER SYSTEM. IF GREASE AND GRIT IS NOTICED DURING THE DISMANTLING OF THE DISCHARGE PIPING. THE CONTRACTOR SHALL REINSTALL A FLUSHING SYSTEM OR PROVIDE A WRITTEN PLAN TO THE OWNER ON HOW GREASE AND GRIT WILL BE PROPERLY HANDLED AND DISPOSED OF.

SANITARY MANHOLE FRAME AND COVER

FRAMES AND COVERS SHALL BE INSTALLED ON THE SANITARY SEWER MANHOLES PER THE PROJECT SPECIFICATIONS.

DEWATERING PERMITS

DEWATERING ACTIVITIES SHALL BE CONDUCTED IN ACCORDANCE WITH THE PROJECT SPECIFICATIONS, AND IN ACCORDANCE WITH THE FOLLOWING ADDITIONAL REQUIREMENTS.

DEWATERING ACTIVITIES SHALL BE CONDUCTED IN COMPLIANCE WITH THE "GENERAL PERMIT TO DISCHARGE UNDER THE SURFACE WATER DISCHARGE SYSTEM FOR TEMPORARY DEWATERING ACTIVITIES IN SOUTH DAKOTA", SDDANR PERMIT NO. SDG 070000. A COPY OF THE PERMIT IS AVAILABLE THROUGH SDDANR. THE CONTRACTOR IS REQUIRED TO FURNISH THE "REQUEST FOR AUTHORIZATION" TO DANR REQUIRED UNDER THE PERMIT AND FOR EACH SCHEDULE, OBTAIN DANR AUTHORIZATION, AND FURNISH A SEPARATE COPY OF AUTHORIZATION TO THE RESPECTIVE OWNER AT THE PRECONSTRUCTION CONFERENCE.

THE CONTRACTOR IS RESPONSIBLE FOR PERFORMING SELF-MONITORING ACTIVITIES INCLUDING SAMPLING, TESTING AND REPORTING AS MAY BE DETERMINED TO BE REQUIRED UNDER THE AUTHORIZATION TO DISCHARGE. PAYMENT FOR OBTAINING THE NECESSARY AUTHORIZATION TO DISCHARGE, AND FOR ALL COMPLIANCE ACTIVITIES AND OBLIGATIONS BY THE CONTRACTOR SHALL BE ABSORBED INTO THE ITEM TO WHICH IT RELATES. NO ADDITIONAL PAYMENT WILL BE MADE.

CONTRACTOR PROVIDED WATER

THE CONTRACTOR SHALL BE RESPONSIBLE FOR PROVIDING WATER FOR COMPACTION OF EARTHEN AND GRANULAR MATERIALS USED FOR, BUT NOT LIMITED TO, GRADING, SUBGRADE PREPARATION, AND TRENCH BACKFILL. WATER NEEDED FOR SOD AND SEED IRRIGATION, STREET CLEANING, AND OTHER MISCELLANEOUS ITEMS SHALL ALSO BE PROVIDED BY THE CONTRACTOR. THE CITY WILL PROVIDE WATER FOR WATER MAIN TESTING AND DECHLORINATION. THERE WILL BE NO SEPARATE PAYMENT FOR WATER. THE COSTS FOR PURCHASING, LOADING, TRANSPORTING AND APPLYING/INCORPORATING WATER SHALL BE INCIDENTAL TO THE VARIOUS ITEMS WHERE WATER IS REQUIRED.

THE CONTRACTOR WILL BE REQUIRED TO PAY FOR METER FEES AND INSTALLATION ONTO A FIRE HYDRANT IF THE WATER IS PURCHASED FROM THE CITY OF PIERRE. CONTACT THE WATER OFFICE AT (605) 773-7448 TO ARRANGE FOR METER HOOK-UPS TO BE ADDED TO FIRE HYDRANTS AND TO OBTAIN THE CURRENT RATE THAT WILL BE CHARGED.

CONCRETE CURB & GUTTER

CONCRETE CURB & GUTTER TO BE REMOVED AND REPLACED IS SHOWN ON THE DRAWINGS. HOWEVER, DURING CONSTRUCTION, THE ENGINEER MAY DIRECT A LESSER OR GREATER REMOVAL LIMIT DUE TO THE PROXIMITY OF CONCRETE JOINTS OR OTHER CONDITIONS. REMOVAL AND REPLACEMENT SHALL BE IN ACCORDANCE WITH THE PROJECT SPECIFICATIONS.

CONCRETE SIDEWALK

CONCRETE SIDEWALK TO BE REMOVED AND REPLACED IS SHOWN ON THE DRAWINGS. REMOVAL AND REPLACEMENT BEYOND THE LIMITS SHOWN SHALL BE AT THE CONTRACTOR'S EXPENSE. HOWEVER, DURING CONSTRUCTION, THE ENGINEER MAY DIRECT A LESSER OR GREATER REMOVAL LIMIT DUE TO THE PROXIMITY OF CONCRETE JOINTS OR OTHER CONDITIONS. REMOVAL AND REPLACEMENT SHALL BE IN ACCORDANCE WITH THE PROJECT SPECIFICATIONS. NEW CONCRETE SIDEWALK SHALL BE PLACED ON 2" GRAVEL CUSHION OR BASE COURSE. THE CONTRACTOR SHALL DOCUMENT THE QUANTITY OF GRAVEL CUSHION USED BY SUBMITTING WEIGHT TICKETS TO THE INSPECTOR.

INCIDENTAL WORK

INCIDENTAL WORK SHALL INCLUDE ALL MISCELLANEOUS ITEMS NOT INCLUDED IN THE REGULAR ITEMS COVERED BY UNIT PRICES LISTED IN THE PROPOSAL AND SHOWN ON THE DRAWINGS, BUT WHICH MUST BE PERFORMED IN ORDER TO PROPERLY COMPLETE THE WORK.

THE ITEMS AND WORK LISTED BELOW ARE TO BE INCLUDED IN THE INCIDENTAL WORK ITEM, BUT THE LIST DOES NOT LIMIT THE SCOPE TO ONLY THOSE ITEMS. THE CONTRACTOR SHALL INCLUDE THOSE ITEMS THAT MAY BE SPECIFIC TO HIS CONSTRUCTION PROCEDURES.

DUST CONTROL

OBTAIN PERMITS AS NEEDED

REMOVE AND RESET TRAFFIC SIGNS

MAINTAIN TEMPORARY SURFACING



STATE OF SOUTH DAKOTA	PROJECT	SHEET	TOTAL SHEETS
	X05W	D.4	D.6

REV DATE: 04/23/2024 INITIAL: DLH

REV DATE: 08/28/2024 INITIAL: DLH

REV DATE: 11/21/2024 INITIAL: DLH

ABANDONMENT / REMOVAL OF EXISTING WATER SERVICE LINES

STABILIZED CONSTRUCTION ENTRANCES

SALVAGE & REINSTALL ROCK LANDSCAPE

PROTECT OTHER UTILITIES FROM MOVEMENT DURING EXCAVATION

SAW CUTTING SHALL BE INCIDENTAL TO THE ASSOCIATED ITEMS OF CONSTRUCTION.

THE CONTRACTOR SHALL BE RESPONSIBLE FOR OBTAINING AND COMPLYING WITH THE RIGHT TO WORK PERMIT FOR THE PROJECT ALLOWING THE CONTRACTOR TO WORK IN THE RIGHT-OF-WAY.

THE CONTRACTOR SHALL TAKE CARE TO PROTECT EXISTING LANDSCAPING AND LAWN IRRIGATION SYSTEMS. ALL LANDSCAPING AND LAWN IRRIGATION SHALL BE REPLACED/RESET IN KIND AT NO ADDITIONAL COST TO THE CITY. THE CONTRACTOR SHALL COORDINATE REMOVAL AND REPLACEMENT OF IRRIGATION SYSTEM WITH THE PROPERTY OWNER. AFTER ANY DAMAGE TO IRRIGATION SYSTEMS IS REPAIRED, THE CONTRACTOR SHALL OBTAIN THE PROPERTY OWNER'S ACCEPTANCE OF THE REPAIRED SYSTEM.

INCIDENTAL WORK SHALL BE PAID FOR UNDER THE LUMP SUM BID FOR "INCIDENTAL WORK".

CONTRACTOR FURNISHED STAKING

ALL STAKING ON THE PROJECT WILL BE BY THE CONTRACTOR IN ACCORDANCE WITH THE PROJECT SPECIFICATIONS. SURVEYOR SHALL LOCATE AND PLACE A STAKE BY PROPERTY CORNERS THAT ARE CLOSE TO SERVICE LINES SO CONTRACTOR IS AWARE THEY EXIST. PAYMENT FOR CONTRACTOR FURNISHED STAKING WILL BE AT THE CONTRACT LUMP SUM PRICE FOR "CONSTRUCTION STAKING".

SANITARY SEWER IMPROVEMENTS HAVE BEEN STATIONED OFF THE MAINLINE ALIGNMENT FOR THE SDDOT PROJECT NH 0014(185)229 U.S. HIGHWAY 14. ALIGNMENT STAKING AND SURVEY CONTROL INFORMATION CAN BE FOUND IN SECTION B OF AFOREMENTIONED PLANS.

AS-BUILT PLANS

THE CONTRACTOR SHALL MEASURE AND RECORD ANY HORIZONTAL OR VERTICAL DEVIATIONS FROM THE CONTRACT DRAWINGS. THE CHANGES SHALL BE RECORDED IN AN ACCURATE, NEAT FASHION ON THE DRAWINGS AND FURNISHED TO THE ENGINEER UPON COMPLETION OF THE PROJECT. SPECIFICALLY, ALL SERVICE TAPS, CONNECTIONS, ANODES AND BURIED FITTINGS SHALL BE RECORDED FOR THE WORK. THE AS-BUILT DRAWINGS SHALL BE ON-SITE AND AVAILABLE FOR REVIEW BY THE ENGINEER UPON REQUEST.

STREET MAINTENANCE

THE CONTRACTOR SHALL MAINTAIN THE STREETS WITHIN THE CONSTRUCTION LIMITS US HIGHWAY 14 (EUCLID AVENUE) UNTIL FINAL PAVEMENT PATCHING / PAVING IS COMPLETE. THE CONTRACTOR SHALL CONTINUE SNOW REMOVAL AND MAINTENANCE OF THE ENTIRE STREET WIDTH UNTIL THE PROJECT IS PAVED, EVEN IF ROADS THAT WERE CLOSED TO THROUGH TRAFFIC HAVE BEEN OPENED. SNOW REMOVAL OPERATIONS SHALL BE DONE TIMELY TO INSURE THE PUBLIC'S SAFE COMMUTE.

ASPHALT MILLINGS / GRAVEL MAINTENANCE AND THE ADDITION OF TEMPORARY GRAVEL AS NEEDED BEYOND THE ORIGINAL GRAVEL / MILLINGS INSTALLATION, SNOW REMOVAL, SWEEPING, AND GENERAL CLEAN-UP OF THE STREETS SHALL BE INCIDENTAL TO THE PROJECT.

RESIDENT NOTIFICATION

THE CONTRACTOR SHALL NOTIFY THE RESIDENTS AFFECTED BY THIS PROJECT OF THE CONSTRUCTION SCHEDULE AND THE EXTENT OF WORK A MINIMUM OF 7 DAYS IN ADVANCE OF BEGINNING CONSTRUCTION. VERIFICATION OF THE RESIDENT'S NOTIFICATION SHALL BE PROVIDED TO THE ENGINEER.

MAINTENANCE OF SOLID WASTE DISPOSAL SERVICE

THE STREETS AND ALLEYS IN THE PROJECT AREAS ARE USED FOR PICKUP AND REMOVAL OF SOLID WASTE FROM THE PROPERTIES ADJACENT TO AND NEAR THE PROJECT AREAS. THE CONTRACTOR SHALL PROVIDE NOTIFICATION OF THE WORK TO ALL AFFECTED PROPERTIES AND COORDINATE WITH VAL KELLER, CITY SOLID WASTE DIVISION PHONE 605-773-7434 OR SOLID WASTE COLLECTION CONTRACTORS TO ASSURE ALTERNATIVE LOCATIONS FOR WEEKLY SOLID WASTE PICKUP ARE PROVIDED AS NEEDED. IF NECESSARY THE CONTRACTOR SHALL TRANSPORT OR CONVEY DISPOSAL CONTAINERS (INCLUDING CONTAINERS FOR RECYCLABLE MATERIALS) TO THE ALTERNATIVE LOCATIONS AND RETURN THEM TO THE USUAL COLLECTION LOCATION ON THE PROPERTY FOLLOWING COLLECTION ON DESIGNATED SOLID WASTE PICKUP DAYS.

MAILBOXES

EXISTING MAILBOXES SHALL BE RESET IN A TEMPORARY LOCATION AS REQUIRED DURING CONSTRUCTION. THE CONTRACTOR SHALL CONTACT THE POSTMASTER FOR A TEMPORARY LOCATION. UPON COMPLETION OF THE SANITARY SEWER AND SURFACING, THE MAILBOXES SHALL BE RESET IN THEIR PERMANENT LOCATION. THE CONTRACTOR WILL BE RESPONSIBLE FOR PLACEMENT OF MAILBOXES DAMAGED DURING CONSTRUCTION.

WARRANTY PERIOD

THE WARRANTY PERIOD FOR THIS PROJECT SHALL START WHEN THE ENTIRE PROJECT IS COMPLETE AND SHALL NOT BE BASED ON COMPLETION OF DIFFERENT PHASES.

CITY MATERIAL PROCUREMENT

THE CITY OF PIERRE HAS PROCURED ALL FIRE HYDRANTS FOR THE PROJECT. SUMMARY OF THE PURCHASE IS BELOW:

Bid Item #	Description	Quantity	Unit	Bid Cost	Total	Lead Time
451E4589	Install Fire Hydrant	12	Each	\$4,071.49	\$48,857.88	4-6 Weeks

THE CONTRACTOR SHALL INCLUDE STATE USE TAX (4.5%), CITY USE TAX (2.5%) AND EXCISE TAX ON THE VALUE OF THE CITY FURNISHED MATERIALS (SHOWN ABOVE) BEING INSTALLED WITHIN THE CONTRACTOR PRICE FOR ALL CITY FURNISHED CONTRACT ITEMS. THE CONTRACTOR SHALL ONLY BE TAXED ON THE QUANTITY OF MATERIALS BEING INSTALLED ON THE PROJECT. THE CITY HAS 6 FIRE HYDRANTS ON HAND AND THERE IS A 4-6 WEEK LEAD TIME FROM TIME OF THE CITY'S PURCHASE TO PROCURE THE ADDITIONAL 6 FIRE HYDRANTS.

THE CITY WILL RECEIVE DELIVERY OF THESE MATERIALS AT 1805 NORTHSTAR AVENUE, PIERRE, SD 57501. THE CITY'S ACTUAL DELIVERY DATES MAY VARY FROM THE DATES LISTED ON THE PROCUREMENT LIST. IF THIS IS THE CASE, THE CITY MAY CONSIDER GRANTING THE CONTRACTOR A TIME EXTENSION BASED ON THE CITY'S LATE RECEIPT OF THE MATERIALS, BUT THE CITY WILL NOT GRANT ANY ADDITIONAL COMPENSATION TO THE CONTRACTOR FOR LOST TIME, OVERHEAD, OR OTHER FINANCIAL COSTS ASSOCIATED WITH THE CITY'S RECEIPT OF MATERIALS BEYOND THE DATE(S) LISTED.

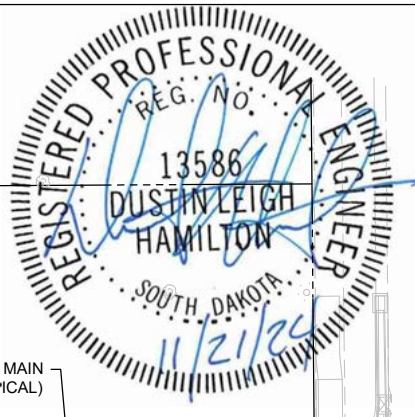
THE CONTRACTOR IS RESPONSIBLE FOR PICK-UP, LOADING, AND TRANSPORTING THE CITY FURNISHED MATERIALS FROM THE CITY OWNER LOCATION (LISTED ABOVE) TO THE PROJECT SITE. THE CONTRACTOR IS RESPONSIBLE FOR ANY DAMAGE TO THE MATERIALS OR CONTRACTOR'S EQUIPMENT DURING THE CONTRACTOR'S PICK-UP, LOADING, AND TRANSPORT PROCESS. ALL COSTS ASSOCIATED WITH THE CONTRACTOR'S PICK-UP, LOADING, AND TRANSPORTATION OF CITY FURNISHED MATERIALS TO THE PROJECT SITE IS INCIDENTAL TO THE INSTALLATION COSTS OF THE VARIOUS BID ITEM(S).

THE CONTRACTOR ASSUMES ALL RESPONSIBILITY AND LIABILITY FOR THE CITY FURNISHED MATERIAL UPON THE CONTRACTOR'S RECEIPT OF THE MATERIAL AS THOUGH THE CONTRACTOR HAD ORDERED IT THEMSELF. THE CITY FURNISHED MATERIAL IS PROVIDED TO THE CONTRACTOR IN AN "AS-IS" CONDITION AND THE CITY MAKES NO WARRANTY WITH RESPECT TO THE SERVICEABILITY AND/OR SUITABILITY OF THE MATERIALS FOR CONTRACT PERFORMANCE. ANY ISSUES WITH QUALITY, WORKMANSHIP, ETC. OF THE MATERIAL NECESSITATING REPAIR, REPLACEMENT, OR REFURBISHMENT OF THE MATERIAL WILL BE HANDLED BY THE CONTRACTOR AT NO ADDITIONAL COST TO THE CITY.

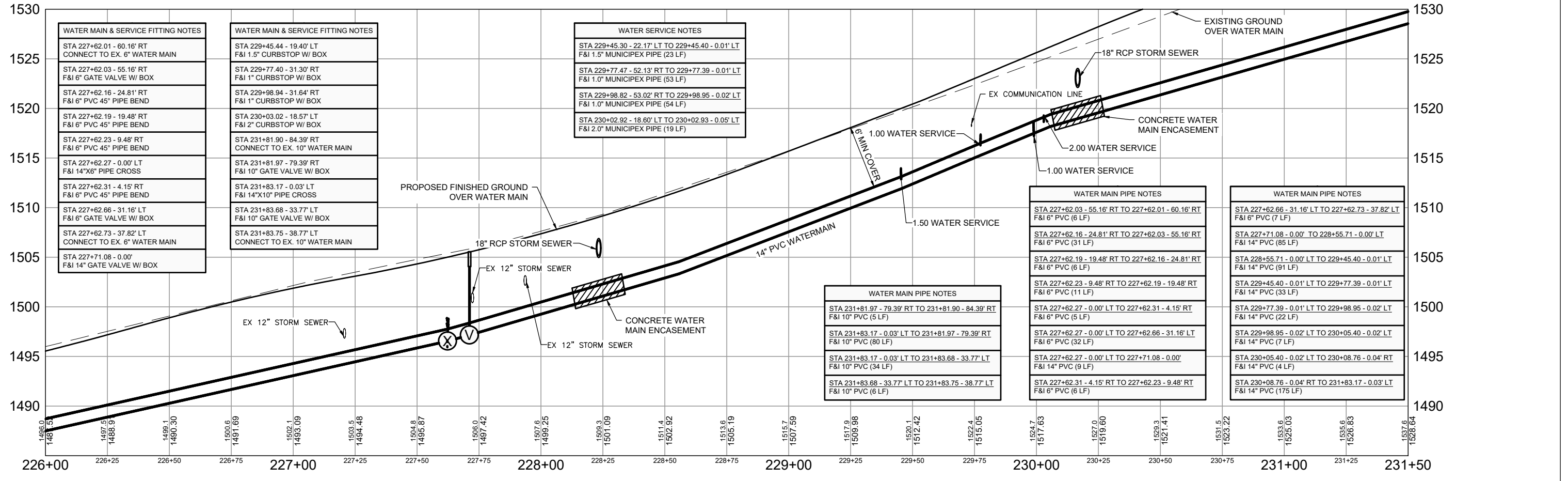
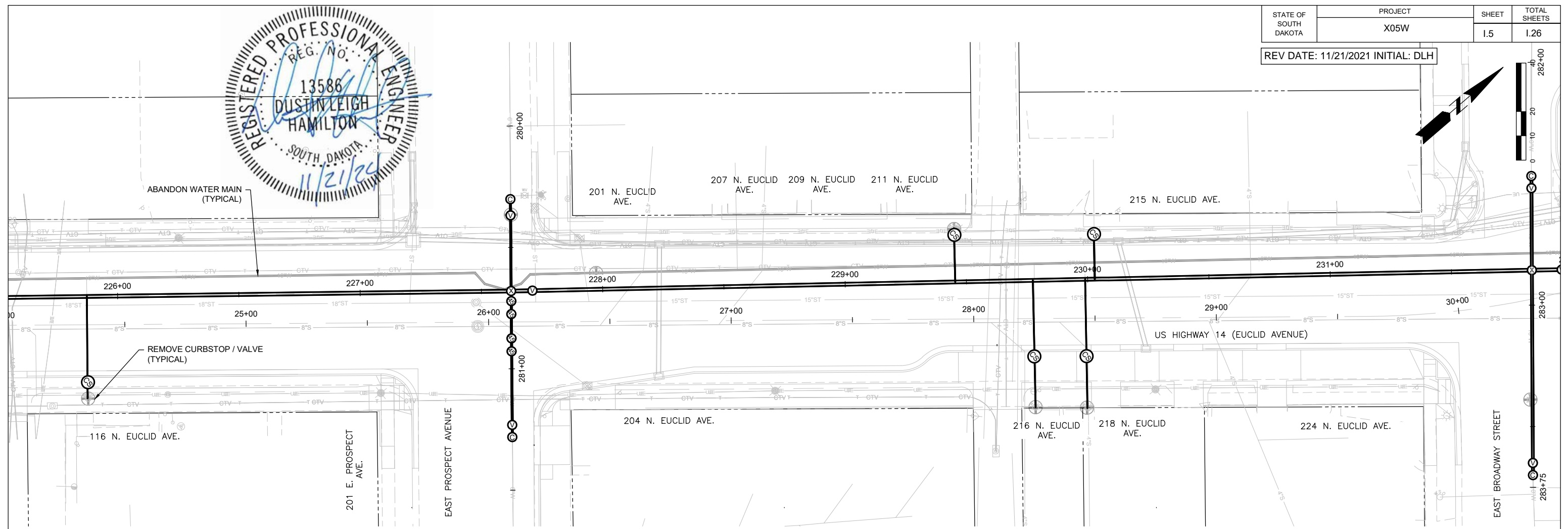
THE CONTRACTOR IS REQUIRED TO SIGN FOR THE CONTRACTOR'S ACCEPTANCE OF THE CITY FURNISHED MATERIAL AT THE TIME OF CONTRACTOR PICK-UP. THE CONTRACTOR WILL SEND AN EMPLOYEE AUTHORIZED TO ACCEPT THE MATERIAL ON BEHALF OF THE CONTRACTOR. BY SIGNING FOR THE MATERIAL, THE CONTRACTOR'S EMPLOYEE CERTIFIES HE IS ACCEPTING THE MATERIAL ON BEHALF OF THE CONTRACTOR AND IS AUTHORIZED TO DO SO. FAILURE TO ACCEPT AND/OR TAKE POSSESSION OF THE CITY FURNISHED MATERIAL DOES NOT ABSOLVE THE CONTRACTOR FOR ASSUMPTION OF ALL RESPONSIBILITY AND LIABILITY FOR THE CITY FURNISHED MATERIAL AS DESCRIBED ABOVE. THE CONTRACTOR SHALL USE THE CITY FURNISHED MATERIAL ONLY FOR PERFORMING THIS CONTRACT UNLESS OTHERWISE APPROVED BY THE CITY.

THE CITY AND/OR ITS ENGINEER WILL RELEASE THE PLAN QUANTITY FOR EACH BID ITEM TO THE CONTRACTOR. ANY UNUSED MATERIAL THAT CAN BE REUSED ON ANOTHER CITY PROJECT MUST BE RETURNED TO THE CITY AT THE COMPLETION OF THE UNDERGROUND UTILITY WORK. ALL COSTS TO RETURN UNUSED MATERIALS TO THE CITY WILL BE INCIDENTAL TO THE PROJECT. THE CONTRACTOR SHALL CONTACT JOSH BIBLE (605-773-7448 / JOSH.BIBLE@CI.PIERRE.SD.US) AT LEAST 48 HOURS PRIOR TO THE CONTRACTOR'S DESIRED PICK-UP DAY/TIME TO ENSURE THE CONTRACTOR HAS ACCESS TO THE PICK-UP LOCATION.





REV DATE: 11/21/2021 INITIAL: DLH



WATER MAIN & SERVICE FITTING NOTES	
STA 227+62.01 - 60.16' RT	CONNECT TO EX. 6" WATER MAIN
STA 227+62.03 - 55.16' RT	F&I 6" GATE VALVE W/ BOX
STA 227+62.16 - 24.81' RT	F&I 6" PVC 45° PIPE BEND
STA 227+62.19 - 19.48' RT	F&I 6" PVC 45° PIPE BEND
STA 227+62.23 - 9.48' RT	F&I 6" PVC 45° PIPE BEND
STA 227+62.27 - 0.00' LT	F&I 14"x6" PIPE CROSS
STA 227+62.31 - 4.15' RT	F&I 6" PVC 45° PIPE BEND
STA 227+62.66 - 31.16' LT	F&I 6" GATE VALVE W/ BOX
STA 227+62.73 - 37.82' LT	CONNECT TO EX. 6" WATER MAIN
STA 227+71.08 - 0.00'	F&I 14" GATE VALVE W/ BOX

WATER MAIN & SERVICE FITTING NOTES	
STA 229+45.44 - 19.40' LT	F&I 1.5" CURBSTOP W/ BOX
STA 229+77.40 - 31.30' RT	F&I 1" CURBSTOP W/ BOX
STA 229+98.94 - 31.64' RT	F&I 1" CURBSTOP W/ BOX
STA 230+03.02 - 18.57' LT	F&I 2" CURBSTOP W/ BOX
STA 231+81.90 - 84.39' RT	CONNECT TO EX. 10" WATER MAIN
STA 231+81.97 - 79.39' RT	F&I 10" GATE VALVE W/ BOX
STA 231+83.17 - 0.03' LT	F&I 14"x10" PIPE CROSS
STA 231+83.68 - 33.77' LT	F&I 10" GATE VALVE W/ BOX
STA 231+83.75 - 38.77' LT	CONNECT TO EX. 10" WATER MAIN

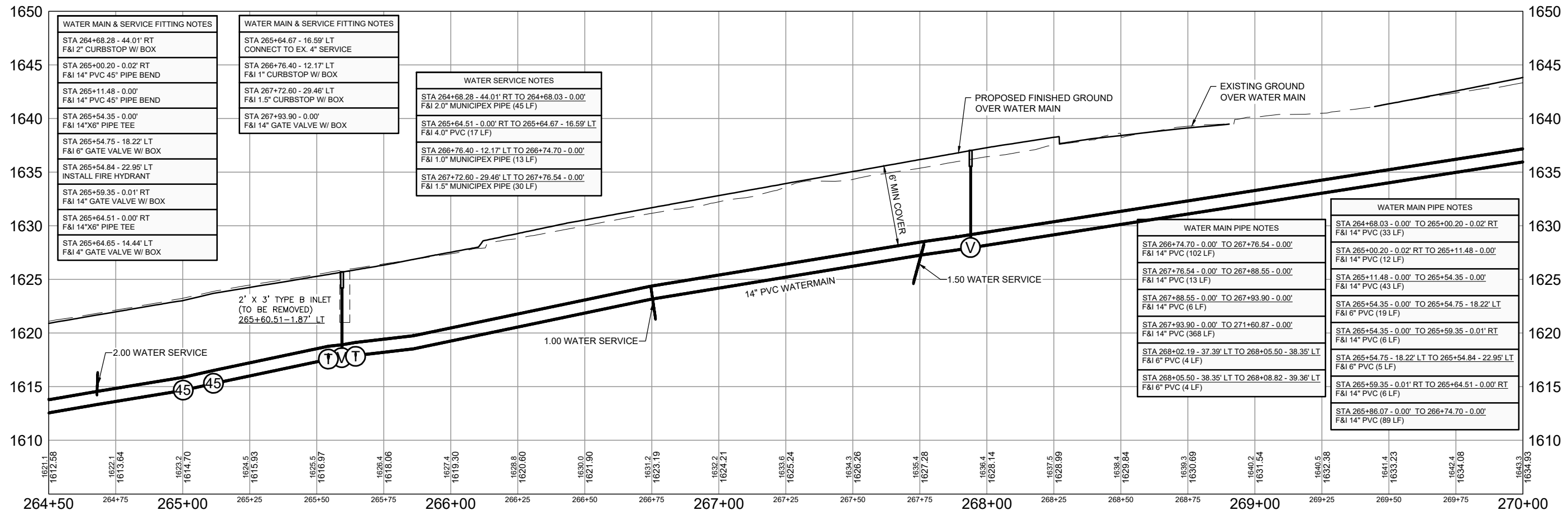
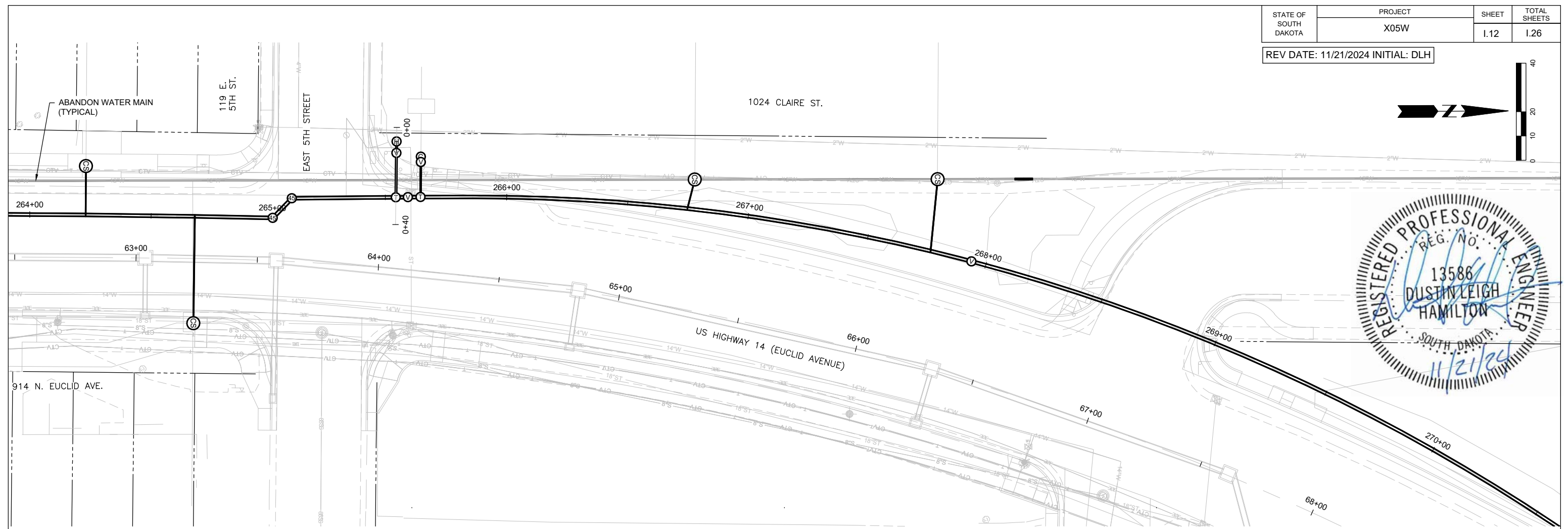
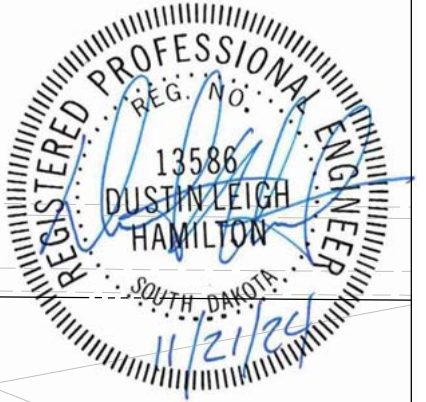
WATER SERVICE NOTES	
STA 229+45.30 - 22.17' LT TO 229+45.40 - 0.01' LT	F&I 1.5" MUNICIPEX PIPE (23 LF)
STA 229+77.47 - 52.13' RT TO 229+77.39 - 0.01' LT	F&I 1.0" MUNICIPEX PIPE (53 LF)
STA 229+98.82 - 53.02' RT TO 229+98.95 - 0.02' LT	F&I 1.0" MUNICIPEX PIPE (54 LF)
STA 230+02.92 - 18.60' LT TO 230+02.93 - 0.05' LT	F&I 2.0" MUNICIPEX PIPE (19 LF)

WATER MAIN PIPE NOTES	
STA 231+81.97 - 79.39' RT TO 231+81.90 - 84.39' RT	F&I 10" PVC (5 LF)
STA 231+83.17 - 0.03' LT TO 231+81.97 - 79.39' RT	F&I 10" PVC (80 LF)
STA 231+83.17 - 0.03' LT TO 231+83.68 - 33.77' LT	F&I 10" PVC (34 LF)
STA 231+83.68 - 33.77' LT TO 231+83.75 - 38.77' LT	F&I 10" PVC (6 LF)

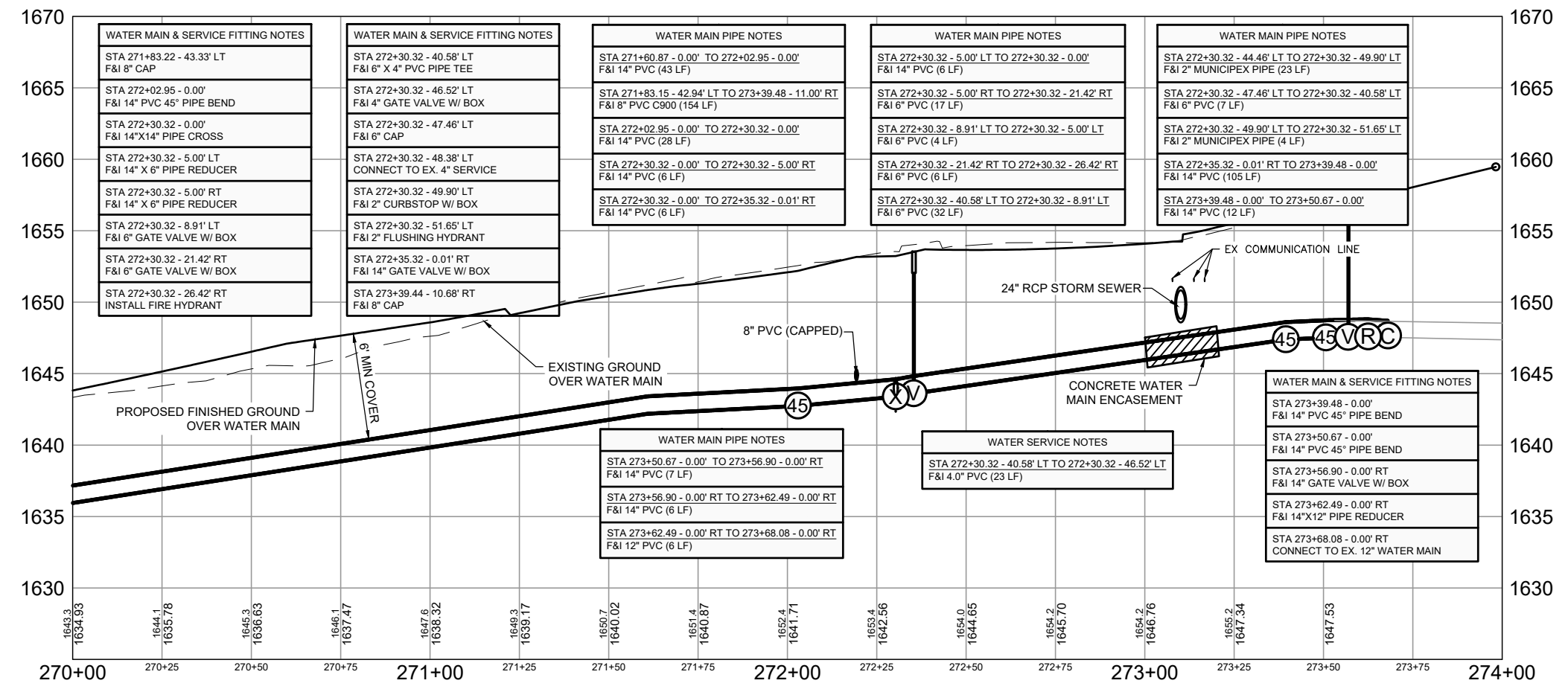
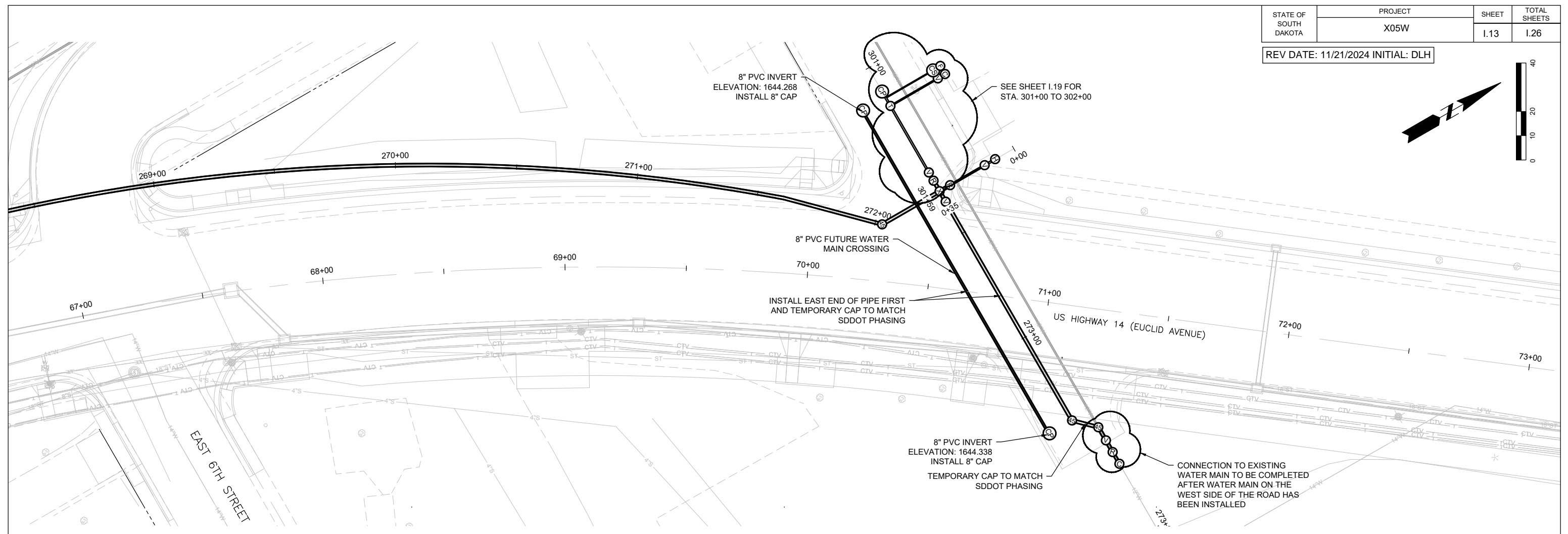
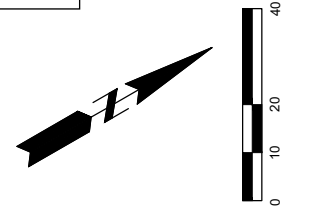
WATER MAIN PIPE NOTES	
STA 227+62.03 - 55.16' RT TO 227+62.01 - 60.16' RT	F&I 6" PVC (6 LF)
STA 227+62.16 - 24.81' RT TO 227+62.03 - 55.16' RT	F&I 6" PVC (31 LF)
STA 227+62.19 - 19.48' RT TO 227+62.16 - 24.81' RT	F&I 6" PVC (6 LF)
STA 227+62.23 - 9.48' RT TO 227+62.19 - 19.48' RT	F&I 6" PVC (11 LF)
STA 227+62.27 - 0.00' LT TO 227+62.31 - 4.15' RT	F&I 6" PVC (5 LF)
STA 227+62.27 - 0.00' LT TO 227+62.66 - 31.16' LT	F&I 6" PVC (32 LF)
STA 231+83.17 - 0.03' LT TO 227+71.08 - 0.00'	F&I 14" PVC (9 LF)
STA 227+62.31 - 4.15' RT TO 227+62.23 - 9.48' RT	F&I 6" PVC (6 LF)

WATER MAIN PIPE NOTES	
STA 227+62.66 - 31.16' LT TO 227+62.73 - 37.82' LT	F&I 6" PVC (7 LF)
STA 227+71.08 - 0.00' TO 228+55.71 - 0.00' LT	F&I 14" PVC (85 LF)
STA 228+55.71 - 0.00' LT TO 229+45.40 - 0.01' LT	F&I 14" PVC (91 LF)
STA 229+45.40 - 0.01' LT TO 229+77.39 - 0.01' LT	F&I 14" PVC (33 LF)
STA 229+77.39 - 0.01' LT TO 229+98.95 - 0.02' LT	F&I 14" PVC (22 LF)
STA 229+98.95 - 0.02' LT TO 230+05.40 - 0.02' LT	F&I 14" PVC (7 LF)
STA 230+05.40 - 0.02' LT TO 230+08.76 - 0.04' RT	F&I 14" PVC (4 LF)
STA 230+08.76 - 0.04' RT TO 231+83.17 - 0.03' LT	F&I 14" PVC (175 LF)

REV DATE: 11/21/2024 INITIAL: DLH



REV DATE: 11/21/2024 INITIAL: DLH



WATER MAIN & SERVICE FITTING NOTES	
STA 271+83.22 - 43.33' LT	F&I 8" CAP
STA 272+02.95 - 0.00'	F&I 14" PVC 45° PIPE BEND
STA 272+30.32 - 0.00'	F&I 14"x14" PIPE CROSS
STA 272+30.32 - 5.00' LT	F&I 14" X 6" PIPE REDUCER
STA 272+30.32 - 5.00' RT	F&I 14" X 6" PIPE REDUCER
STA 272+30.32 - 8.91' LT	F&I 6" GATE VALVE W/ BOX
STA 272+30.32 - 21.42' RT	F&I 6" GATE VALVE W/ BOX
STA 272+30.32 - 26.42' RT	INSTALL FIRE HYDRANT

WATER MAIN & SERVICE FITTING NOTES	
STA 272+30.32 - 40.58' LT	F&I 6" X 4" PVC PIPE TEE
STA 272+30.32 - 46.52' LT	F&I 4" GATE VALVE W/ BOX
STA 272+30.32 - 47.46' LT	F&I 6" CAP
STA 272+30.32 - 48.38' LT	CONNECT TO EX. 4" SERVICE
STA 272+30.32 - 49.90' LT	F&I 2" CURBSTOP W/ BOX
STA 272+30.32 - 51.65' LT	F&I 2" FLUSHING HYDRANT
STA 272+35.32 - 0.01' RT	F&I 14" GATE VALVE W/ BOX
STA 273+39.44 - 10.68' RT	F&I 8" CAP

WATER MAIN PIPE NOTES	
STA 271+60.87 - 0.00' TO 272+02.95 - 0.00'	F&I 14" PVC (43 LF)
STA 271+83.15 - 42.94' LT TO 273+39.48 - 11.00' RT	F&I 8" PVC C900 (154 LF)
STA 272+02.95 - 0.00' TO 272+30.32 - 0.00'	F&I 14" PVC (28 LF)
STA 272+30.32 - 0.00' TO 272+30.32 - 5.00' RT	F&I 14" PVC (6 LF)
STA 272+30.32 - 0.00' TO 272+35.32 - 0.01' RT	F&I 14" PVC (6 LF)

WATER MAIN PIPE NOTES	
STA 272+30.32 - 5.00' LT TO 272+30.32 - 0.00'	F&I 14" PVC (6 LF)
STA 272+30.32 - 5.00' RT TO 272+30.32 - 21.42' RT	F&I 6" PVC (17 LF)
STA 272+30.32 - 8.91' LT TO 272+30.32 - 5.00' LT	F&I 6" PVC (4 LF)
STA 272+30.32 - 21.42' RT TO 272+30.32 - 26.42' RT	F&I 6" PVC (6 LF)
STA 272+30.32 - 40.58' LT TO 272+30.32 - 8.91' LT	F&I 6" PVC (32 LF)

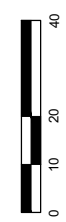
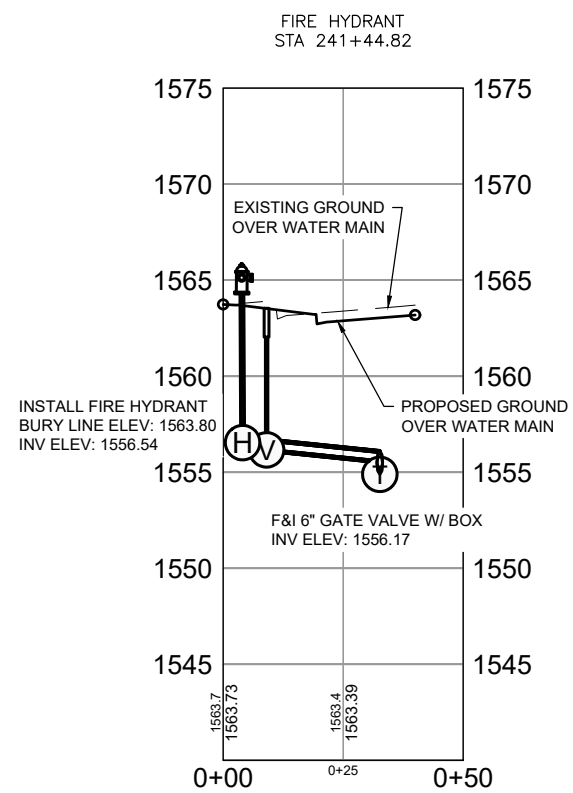
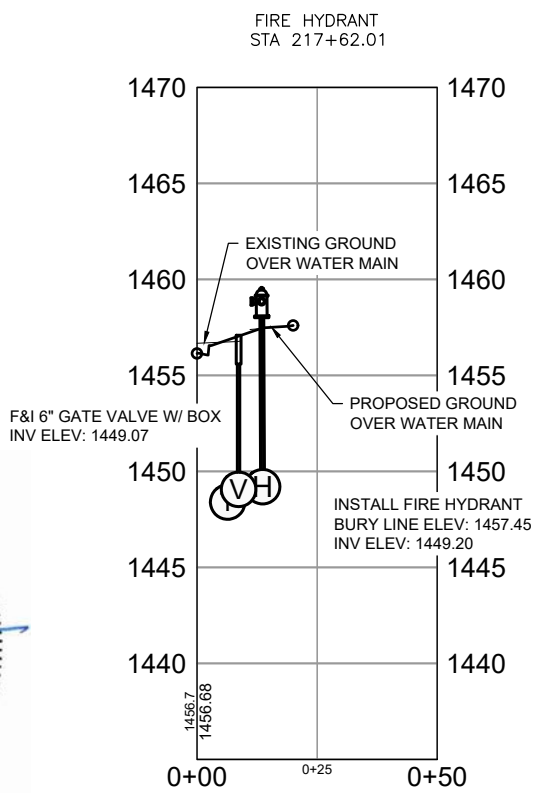
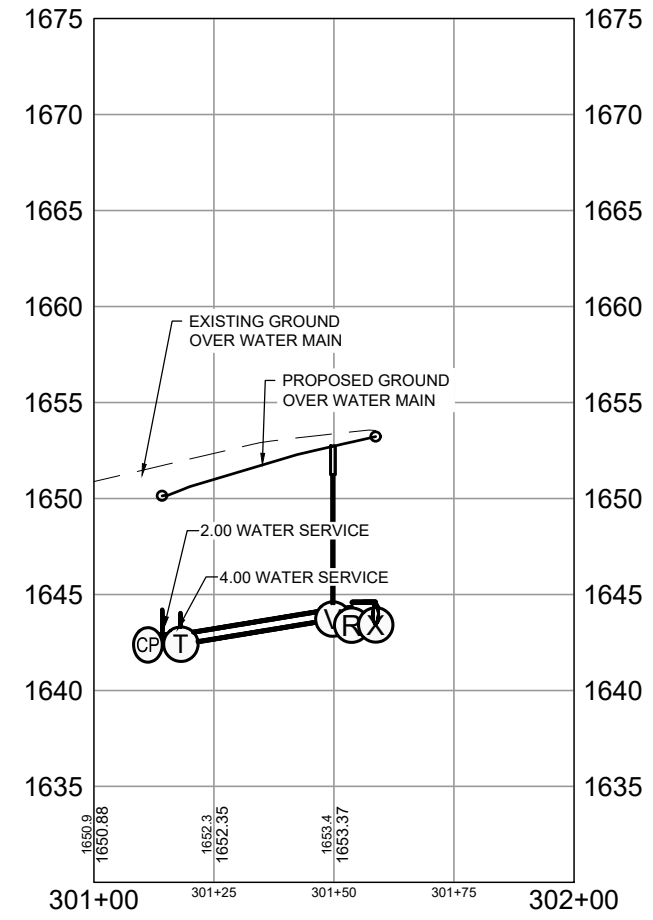
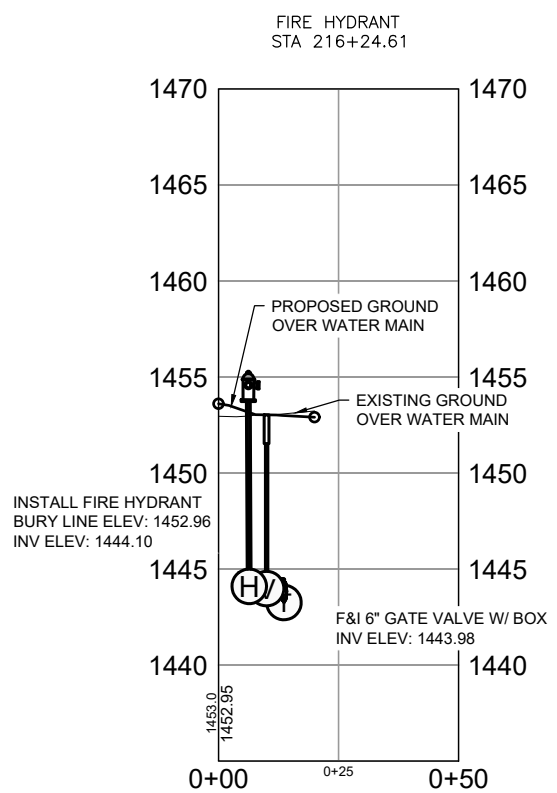
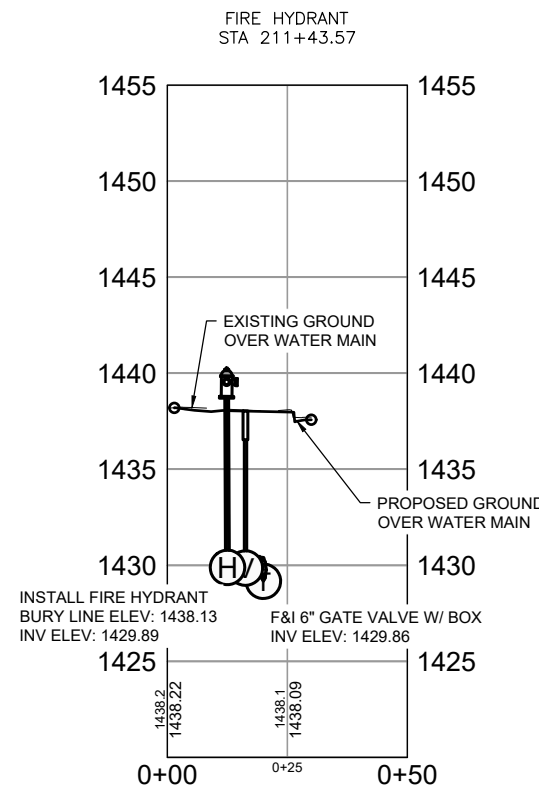
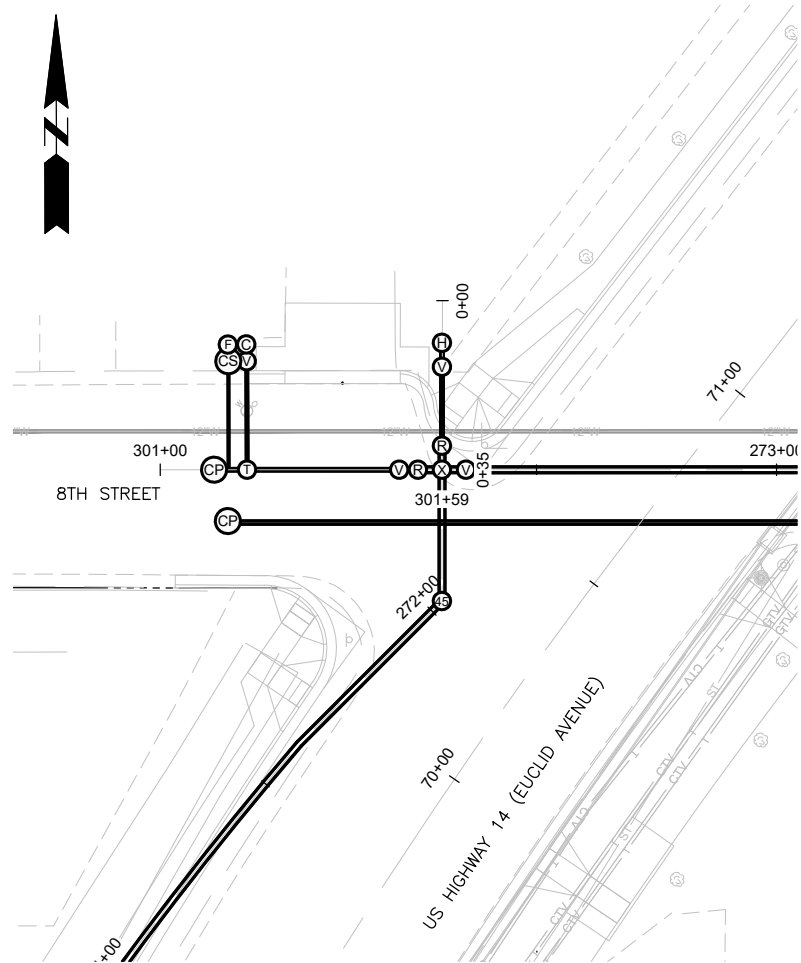
WATER MAIN PIPE NOTES	
STA 272+30.32 - 44.46' LT TO 272+30.32 - 49.90' LT	F&I 2" MUNICIPEX PIPE (23 LF)
STA 272+30.32 - 47.46' LT TO 272+30.32 - 40.58' LT	F&I 6" PVC (7 LF)
STA 272+30.32 - 49.90' LT TO 272+30.32 - 51.65' LT	F&I 2" MUNICIPEX PIPE (4 LF)
STA 272+35.32 - 0.01' RT TO 273+39.48 - 0.00'	F&I 14" PVC (105 LF)
STA 273+39.48 - 0.00' TO 273+50.67 - 0.00'	F&I 14" PVC (12 LF)

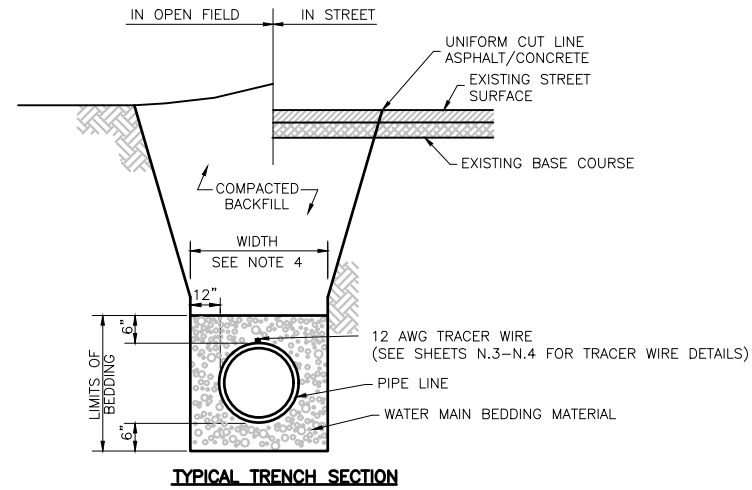
WATER MAIN PIPE NOTES	
STA 273+50.67 - 0.00' TO 273+56.90 - 0.00' RT	F&I 14" PVC (7 LF)
STA 273+56.90 - 0.00' RT TO 273+62.49 - 0.00' RT	F&I 14" PVC (6 LF)
STA 273+62.49 - 0.00' RT TO 273+68.08 - 0.00' RT	F&I 12" PVC (6 LF)

WATER SERVICE NOTES	
STA 272+30.32 - 40.58' LT TO 272+30.32 - 46.52' LT	F&I 4.0" PVC (23 LF)

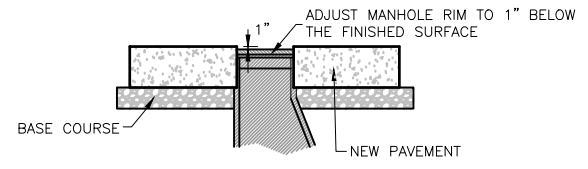
WATER MAIN & SERVICE FITTING NOTES	
STA 273+39.48 - 0.00'	F&I 14" PVC 45° PIPE BEND
STA 273+50.67 - 0.00'	F&I 14" PVC 45° PIPE BEND
STA 273+56.90 - 0.00' RT	F&I 14" GATE VALVE W/ BOX
STA 273+62.49 - 0.00' RT	F&I 14"x12" PIPE REDUCER
STA 273+68.08 - 0.00' RT	CONNECT TO EX. 12" WATER MAIN



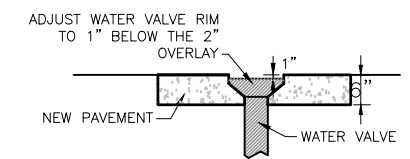




- NOTES:**
1. MINIMUM COVER TO BE 6' BELOW OFFICIAL STREET GRADE.
 2. TRENCH TO BE BRACED OR SHEETED AS NECESSARY FOR THE SAFETY OF THE WORKMEN AND PROTECTION OF OTHER UTILITIES IN ACCORDANCE WITH APPLICABLE LOCAL, STATE AND FEDERAL SAFETY REGULATIONS.
 3. PIPE SHALL BE BEDDED FROM 6" BELOW THE BOTTOM OF THE PIPE TO 6" ABOVE THE TOP OF THE PIPE.
 4. TRENCH WIDTH SHALL NOT BE MORE THAN 16" NOR LESS THAN 12" WIDER THAN THE LARGEST OUTSIDE DIAMETER OF THE PIPE.
 5. SHOULD THE TRENCH BE EXCAVATED WIDER THAN ALLOWED A CONCRETE CRADLE SHALL BE PLACED WITH 2,500 P.S.I CONCRETE FROM TRENCH BOTTOM TO PIPE SPRINGLINE.
 6. INSTALLATION OF BEDDING AND PIPE: AFTER COMPLETION OF THE TRENCH EXCAVATION AND PROPER PREPARATION OF THE FOUNDATION, SIX INCHES (6") OF BEDDING MATERIAL SHALL BE PLACED ON THE TRENCH BOTTOM FOR SUPPORT UNDER THE PIPE. BELL HOLES SHALL BE DUG DEEP ENOUGH TO PROVIDE A MINIMUM OF TWO INCHES (2") OF CLEARANCE BETWEEN THE BELL AND BEDDING MATERIAL. ALL PIPE SHALL BE INSTALLED IN SUCH A MANNER AS TO INSURE FULL SUPPORT OF THE PIPE BARREL OVER ITS ENTIRE LENGTH. AFTER THE PIPE IS ADJUSTED FOR LINE AND GRADE, AND THE JOINT IS MADE, THE BEDDING MATERIAL SHALL BE CAREFULLY PLACED AND TAMPED UNDER THE HAUNCHES OF THE PIPE AND IN THE PREVIOUSLY DUG BELL HOLES.

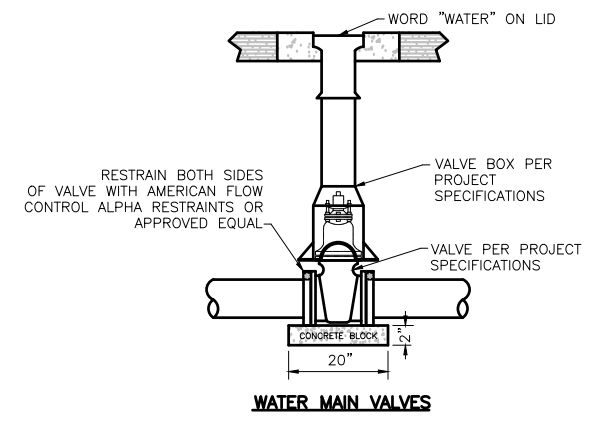


MANHOLE ADJUSTMENT DETAIL

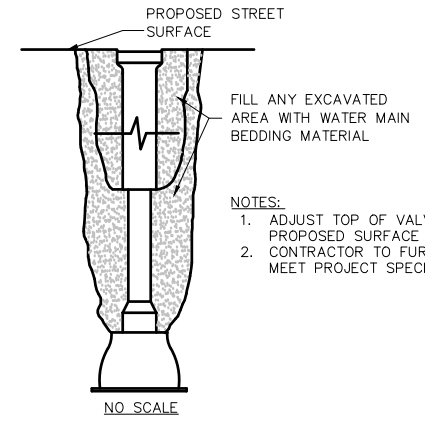


WATER VALVE ADJUSTMENT DETAIL

- NOTE:**
1. EXISTING MANHOLES AND WATER VALVES SHALL BE ADJUSTED TO 1/4" BELOW THE NEW ASPHALT OVERLAY PRIOR TO THE OVERLAY. THE ENGINEER SHALL INSPECT & APPROVE ALL ADJUSTED MANHOLES AND WATER VALVES PRIOR TO THE BEGINNING OF OVERLAY OPERATIONS. HAND RAKING WILL BE REQUIRED AROUND ALL MANHOLES AND WATER VALVES TO ENSURE A UNIFORM FINISH.



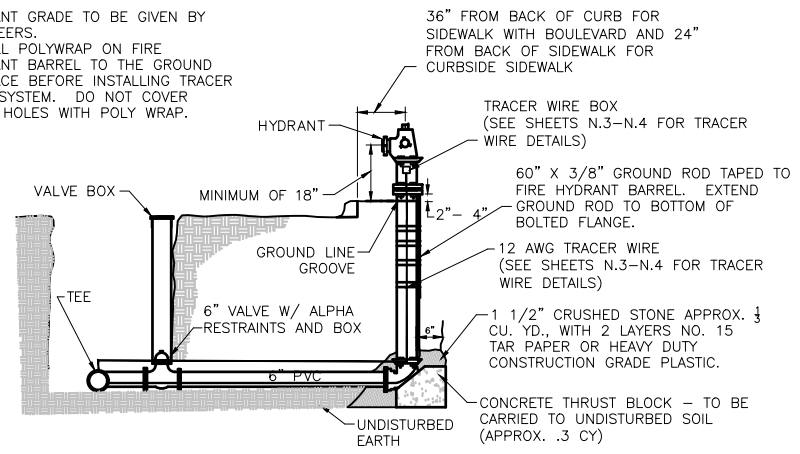
WATER MAIN VALVES



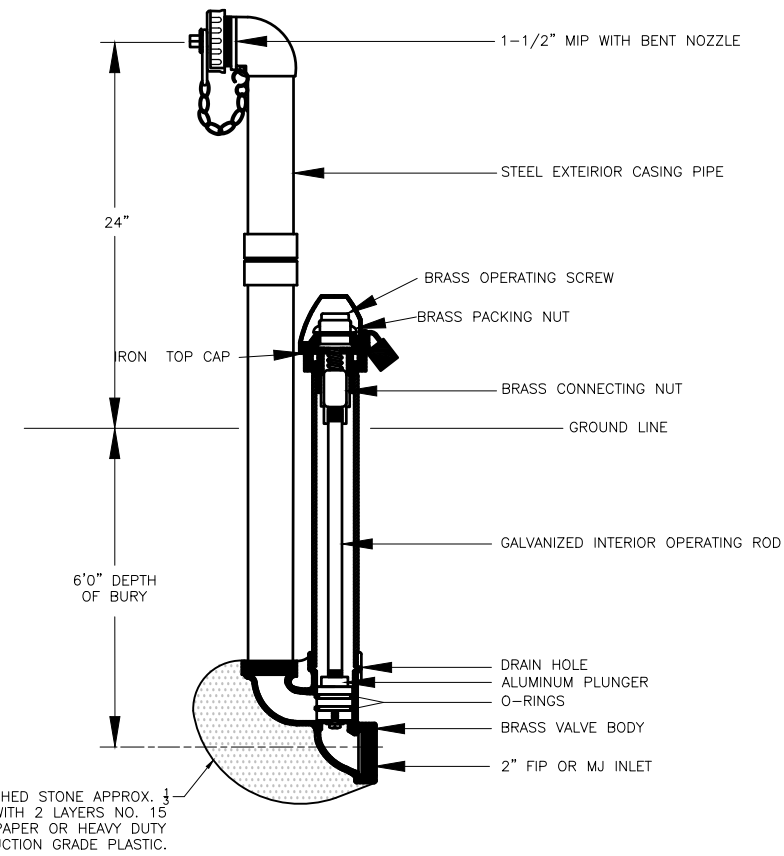
VALVE BOX INSTALLATION

- NOTES:**
1. ADJUST TOP OF VALVE BOX TO 1" BELOW THE PROPOSED SURFACE ELEVATION.
 2. CONTRACTOR TO FURNISH ALL MATERIALS TO MEET PROJECT SPECIFICATIONS.

- NOTE:**
1. HYDRANT GRADE TO BE GIVEN BY ENGINEERS.
 2. INSTALL POLYWRAP ON FIRE HYDRANT BARREL TO THE GROUND SURFACE BEFORE INSTALLING TRACER WIRE SYSTEM. DO NOT COVER WEEP HOLES WITH POLY WRAP.



HYDRANT CONNECTION



FLUSHING HYDRANT

- 1 1/2" CRUSHED STONE APPROX. 1/3 CU. YD., WITH 2 LAYERS NO. 15 TAR PAPER OR HEAVY DUTY CONSTRUCTION GRADE PLASTIC.

- NOTE:**
1. INSTALL POLYWRAP ON FLUSHING HYDRANT BARREL TO THE GROUND SURFACE. DO NOT COVER WEEP HOLES WITH POLY WRAP.

APPURTENANCE	RESTRAINT LENGTH
6"x6" PIPE TEE	5 FT
8"x6" PIPE TEE	1 FT
14"x4" PIPE TEE	1 FT
14"x6" PIPE TEE	1 FT
14"x8" PIPE TEE	1 FT
14"x10" PIPE TEE	12 FT
14"x14" PIPE TEE	40 FT
12"x6" PIPE REDUCER	41 FT
14"x6" PIPE REDUCER	53 FT
14"x10" PIPE REDUCER	32 FT
14"x12" PIPE REDUCER	17 FT
4" 45° PIPE BEND (VERT. TOP)	9 FT
4" 45° PIPE BEND (VERT. BOTTOM)	3 FT
6" 45° PIPE BEND (VERT. TOP)	13 FT
6" 45° PIPE BEND (VERT. BOTTOM)	4 FT
14" 22.5° PIPE BEND (HORIZONTAL)	5 FT
14" 45° PIPE BEND (HORIZONTAL)	10 FT
14" 45° PIPE BEND (VERT. TOP)	28 FT
14" 45° PIPE BEND (VERT. BOTTOM)	8 FT
6" PIPE CAP	30 FT

WATER MAIN RESTRAINT TABLE

