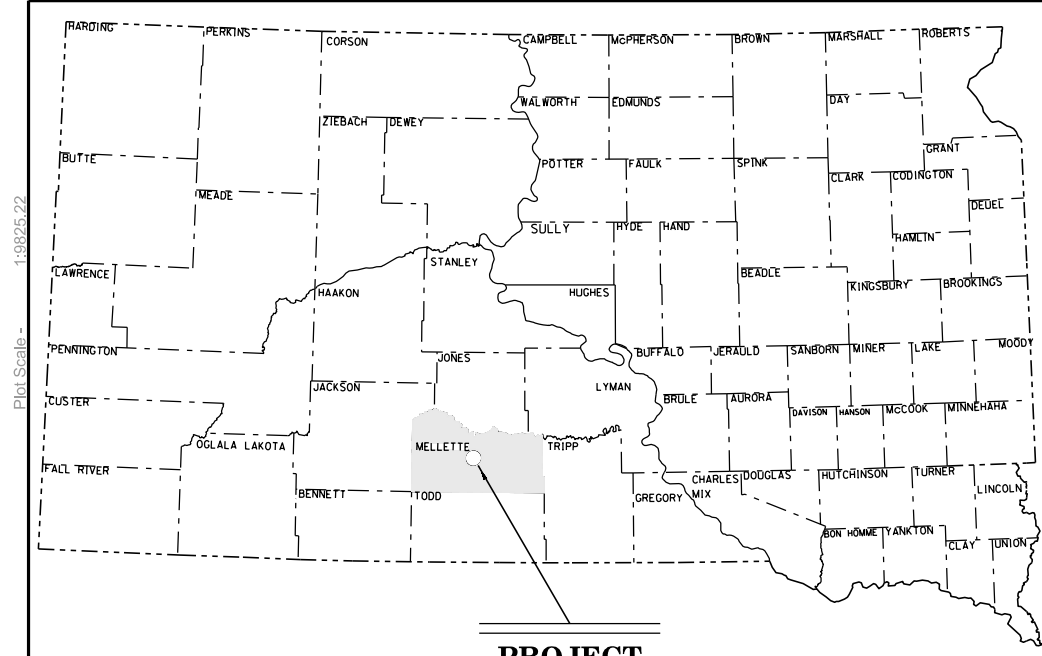


Plot Scale - 1:9925,22



PROJECT

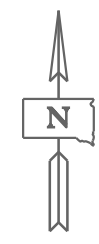
STATE OF SOUTH DAKOTA
DEPARTMENT OF TRANSPORTATION
PLANS FOR PROPOSED
PROJECT P0044(197)196
SD HIGHWAY 44
MELLETTTE COUNTY

BRIDGE DECK POLYMER CHIP SEAL
& JOINT REPLACEMENT

PCN 05FU

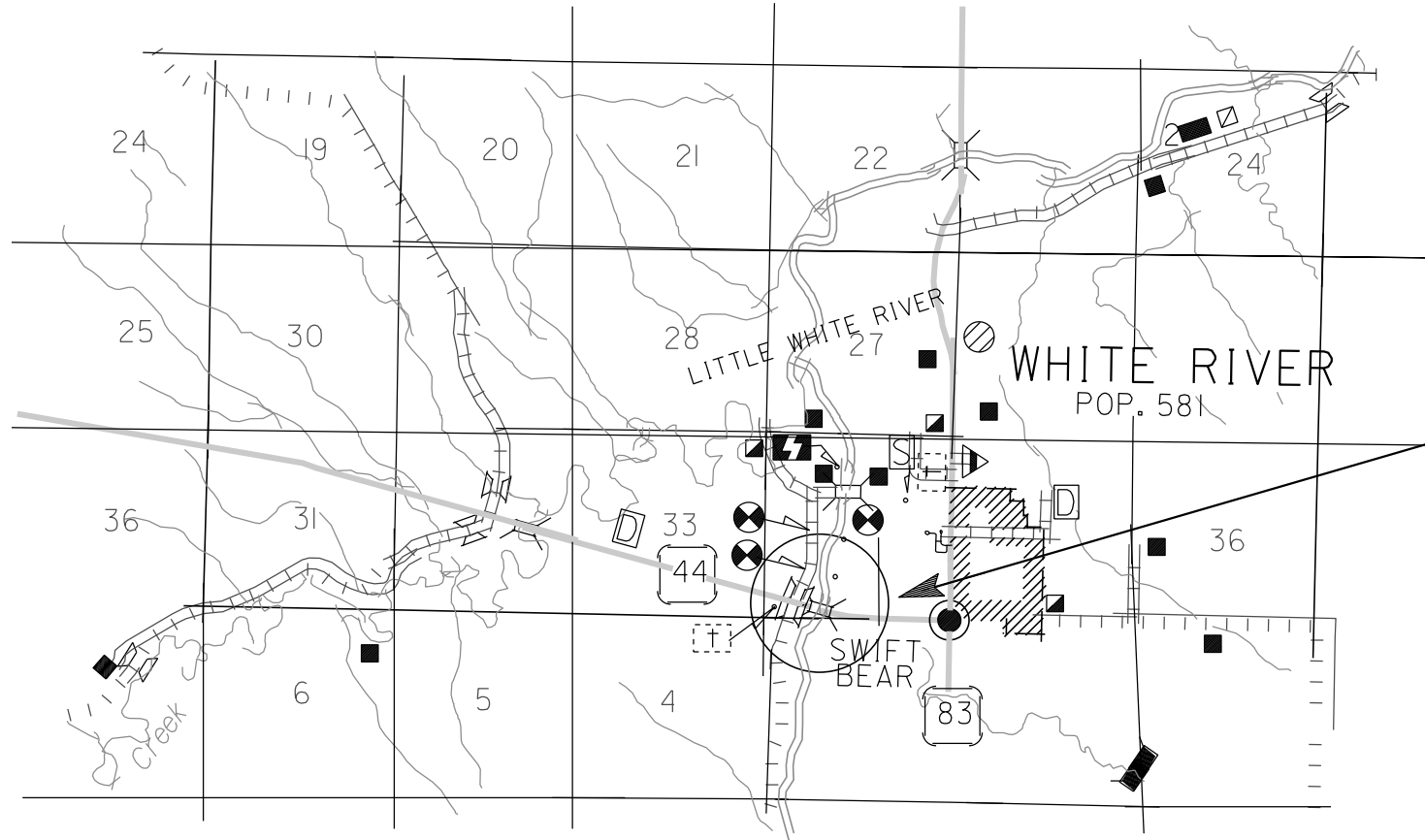
STATE OF SOUTH DAKOTA	PROJECT	SHEET	TOTAL SHEETS
	P 0044(197)196	1	39

Plotting Date: 02/28/2019



INDEX OF SECTIONS

- SECTION A: Estimate of Quantities & Environmental Commitment Notes
- SECTION C: Traffic Control Plans
- SECTION E: Structure Plans



PROJECT
 Structure No. 48-243-210
 Continuous Composite Girder Bridge
 Over Little White River
 358' = 0.068 Mile
 MRM 196.51

STORM WATER PERMIT
 (None Required)

DESIGN DESIGNATION

ADT (2017)	546
ADT (2037)	779
DHV	92
D	51%
T DHV	1.6%
T ADT	3.5%
V	65 MPH

2

May 15, 2019

Plotted From: trp25289

File: ...Mell05FU05FU_Title.dgn

ESTIMATE OF QUANTITIES

STATE OF	PROJECT	SHEET NO.	TOTAL SHEETS
S.D.	P 0044(197)196	A1	A3

ESTIMATE OF QUANTITIES

Revised 3/25/19 SML

SECTION C: TRAFFIC CONTROL:

BID ITEM NUMBER	ITEM	QUANTITY	UNIT
009E0010	Mobilization	Lump Sum	LS
633E1400	Pavement Marking Paint, 4" White	916	Ft
633E1405	Pavement Marking Paint, 4" Yellow	458	Ft
634E0010	Flagging	20.0	Hour
634E0110	Traffic Control Signs	186.0	SqFt
634E0120	Traffic Control, Miscellaneous	Lump Sum	LS
634E0275	Type 3 Barricade	2	Each
634E0310	Temporary Flexible Vertical Markers (Tabs)	458	Ft
634E0600	4" Temporary Pavement Marking Tape Type I	2,144	Ft

SECTION E ~ Str. No. 48-243-210

BID ITEM NUMBER	ITEM	QUANTITY	UNIT
110E6210	Remove Thrie Beam Guardrail for Reset	50.0	Ft
410E2220	Replace Expansion Device	2	Each
480E5000	Galvanic Anode	140	Each
491E0005	Two Coat Bridge Deck Polymer Chip Seal	1,400.0	SqYd
491E0110	Abrasive Blasting of Bridge Deck	1,400.0	SqYd
491E0120	Bridge Deck Grinding	1,400.0	SqYd
491E0130	Concrete Removal, Class A	10.0	SqYd
491E0140	Concrete Removal, Class B	10.0	SqYd
491E0172	Concrete Patching Material, Bridge Deck	61.8	CuFt
630E2105	Beam Guardrail Block	24	Each
630E5120	Reset Thrie Beam Rail	50.0	Ft

SPECIFICATIONS

Standard Specifications for Roads and Bridges, 2015 Edition and Required Provisions, Supplemental Specifications, and Special Provisions as included in the Proposal.

STATE OF	PROJECT	SHEET NO.	TOTAL SHEETS
S.D.	P 0044(197)196	A2	A3

ENVIRONMENTAL COMMITMENTS

The SDDOT is committed to protecting the environment and uses Section A Environmental Commitments as a communication tool for the Engineer and Contractor to ensure that attention is given to avoid, minimize, and/or mitigate an environmental impact. Environmental commitments to various agencies and the public have been made to secure approval of this project. An agency with permitting authority can delay a project if identified environmental impacts have not been adequately addressed. Unless otherwise designated, the Contractor's primary contact regarding matters associated with these commitments will be the Project Engineer. These environmental commitments are not subject to change without prior written approval from the SDDOT Environmental Office.

Additional guidance on SDDOT's Environmental Commitments can be accessed through the Environmental Procedures Manual found at: <http://www.sddot.com/resources/Manuals/EnvironProcManual.pdf>

For questions regarding change orders in the field that may have an effect on an Environmental Commitment, the Project Engineer will contact the Environmental Office at 605-773-3098 or 605-773-4336 to determine whether an environmental analysis and/or resource agency coordination is necessary.

COMMITMENT B: FEDERALLY THREATENED, ENDANGERED, AND PROTECTED SPECIES

COMMITMENT B2: WHOOPING CRANE

The Whooping Crane is a spring and fall migratory bird in South Dakota that is about 5 feet tall and typically stops on wetlands, rivers, and agricultural lands along their migration route. An adult Whooping Crane is white with a red crown and a long, dark, pointed bill. Immature Whooping Cranes are cinnamon brown. While in flight, their long necks are kept straight and their long dark legs trail behind. Adult Whooping Cranes' black wing tips are visible during flight.

Action Taken/Required:

Harassment or other measures to cause the Whooping Crane to leave the site is a violation of the Endangered Species Act. If a Whooping Crane is sighted roosting in the vicinity of the project, borrow pits, or staging areas associated with the project, cease construction activities in the affected area until the Whooping Crane departs and immediately contact the Project Engineer. The Project Engineer will contact the Environmental Office so that the sighting can be reported to USFWS.

COMMITMENT B4: BALD EAGLE

Bald eagles are known to occur in this area.

Action Taken/Required:

If a nest is observed within one mile of the project site, notify the Project Engineer immediately so that he/she can consult with the Environmental Office for an appropriate course of action.

COMMITMENT C: WATER SOURCE

The Contractor will not withdraw water with equipment previously used outside the State of South Dakota or previously used in aquatic invasive species waters within South Dakota without prior approval from the SDDOT Environmental Office.

Thoroughly wash all construction equipment to prevent and control the introduction and spread of invasive species into the project vicinity.

Action Taken/Required:

The Contractor will obtain the necessary permits from the regulatory agencies such as the South Dakota Department of Environment and Natural Resources (DENR) and the United States Army Corps of Engineers (USACE) prior to water extraction activities.

Additional information and mapping of Aquatic Invasive Species in South Dakota can be accessed at: <http://sdleastwanted.com/maps/default.aspx>.

COMMITMENT E: STORM WATER

Construction activities constitute less than 1 acre of disturbance.

Action Taken/Required:

At a minimum and regardless of project size, appropriate erosion and sediment control measures must be installed to control the discharge of pollutants from the construction site.

COMMITMENT H: WASTE DISPOSAL SITE

The Contractor will furnish a site(s) for the disposal of construction and/or demolition debris generated by this project.

Action Taken/Required:

Construction and/or demolition debris may not be disposed of within the Public ROW.

The waste disposal site(s) will be managed and reclaimed in accordance with the following from the General Permit for Construction/Demolition Debris Disposal Under the South Dakota Waste Management Program issued by the Department of Environment and Natural Resources.

The waste disposal site(s) will not be located in a wetland, within 200 feet of surface water, or in an area that adversely affects wildlife, recreation, aesthetic value of an area, or any threatened or endangered species, as approved by the Environmental Office and the Project Engineer.

If the waste disposal site(s) is located such that it is within view of any ROW, the following additional requirements will apply:

1. Construction and/or demolition debris consisting of concrete, asphalt concrete, or other similar materials will be buried in a trench completely separate from wood debris. The final cover over the construction and/or demolition debris will consist of a minimum of 1 foot of soil capable of supporting vegetation. Waste disposal sites provided outside of the Public ROW will be seeded in accordance with Natural Resources Conservation Service recommendations. The seeding recommendations may be obtained through the appropriate County NRCS Office. The Contractor will control the access to waste disposal sites not within the Public ROW with fences, gates, and placement of a sign or signs at the entrance to the site stating "No Dumping Allowed".

2. Concrete and asphalt concrete debris may be stockpiled within view of the ROW for a period of time not to exceed the duration of the project. Prior to

project completion, the waste shall be removed from view of the ROW or buried and the waste disposal site reclaimed as noted above.

The above requirements will not apply to waste disposal sites that are covered by an individual solid waste permit as specified in SDCL 34A-6-58, SDCL 34A-6-1.13, and ARSD 74:27:10:06.

Failure to comply with the requirements stated above may result in civil penalties in accordance with South Dakota Solid Waste Law, SDCL 34A-6-1.31.

All costs associated with furnishing waste disposal site(s), disposing of waste, maintaining control of access (fence, gates, and signs), and reclamation of the waste disposal site(s) will be incidental to the various contract items.

COMMITMENT I: HISTORICAL PRESERVATION OFFICE CLEARANCES

The SDDOT has obtained concurrence with the State Historical Preservation Office (SHPO or THPO) for all work included within the project limits and all department designated sources and designated option material sources, stockpile sites, storage areas, and waste sites provided within the plans.

Action Taken/Required:

All earth disturbing activities not designated within the plans require a cultural resource review prior to scheduling the pre-construction meeting. This work includes, but is not limited to: Contractor furnished material sources, material processing sites, stockpile sites, storage areas, plant sites, and waste areas.

The Contractor will arrange and pay for a record search and when necessary, a cultural resource survey. The Contractor has the option to contact the state Archaeological Research Center (ARC) at 605-394-1936 or another qualified archaeologist, to obtain either a records search or a cultural resources survey. A record search might be sufficient for review if the site was previously surveyed; however, a cultural resources survey may need to be conducted by a qualified archaeologist.

The Contractor will provide ARC with the following: a topographical map or aerial view of which the site is clearly outlined, site dimensions, project number, and PCN. If applicable, provide evidence that the site has been previously disturbed by farming, mining, or construction activities with a landowner statement that artifacts have not been found on the site.

The Contractor will submit the cultural resources survey report to SDDOT Environmental Office, 700 East Broadway Avenue, Pierre, SD 57501-2586. SDDOT will submit the information to the appropriate SHPO/THPO. Allow **30 Days** from the date this information is submitted to the Environmental Engineer for SHPO/THPO review.

In the event of an inadvertent discovery of human remains, funerary objects, or if evidence of cultural resources is identified during project construction activities, then such activities will immediately cease and the Project Engineer will be immediately notified. The Project Engineer will contact the SDDOT Environmental Office to determine an appropriate course of action.

SHPO/THPO review does not relieve the Contractor of the responsibility for obtaining any additional permits and clearances for Contractor furnished material sources, material processing sites, stockpile sites, storage areas, plant sites, and waste areas that affect wetlands, threatened and endangered

STATE OF	PROJECT	SHEET NO.	TOTAL SHEETS
S.D.	P 0044(197)196	A3	A3

COMMITMENT I: HISTORICAL PRESERVATION OFFICE CLEARANCES
(Continued)

species, or waterways. The Contractor will not utilize a site known or suspected of having contaminated soil or water. The Contractor will provide the required permits and clearances to the Project Engineer at the preconstruction meeting.