

SECTION M: PAVEMENT MARKING PLANS

STATE OF SOUTH DAKOTA	PROJECT	SHEET	TOTAL SHEETS
	NH 0085(00)54 NH 0085(114)54 NH 0212(00)13	M1	M5

Plotting Date: 02/18/2021 Rev. 2/18/21 TJP

INDEX OF SHEETS

M1	General Layout with Index
M2	Estimate with General Notes & Tables
M3-M4	Pavement Marking Layouts
M5	Standard Plate

BEGIN NH 0212(00)13

Station 704+07
MRM 13.35

END NH 0085(00)54

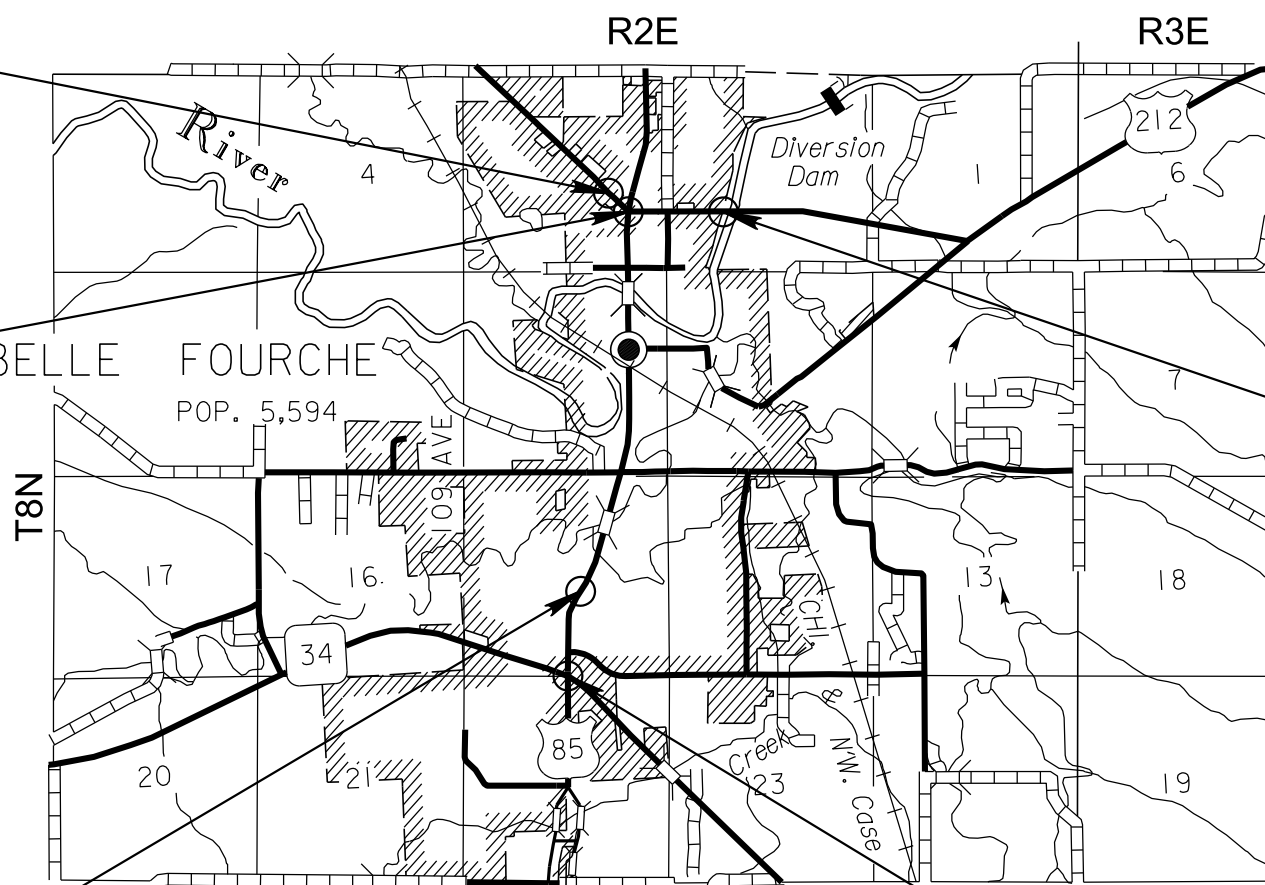
Station 92+32
MRM 56.57

BEGIN NH 0085(00)54

Station 468+00
MRM 54.73

END NH 0212(00)13

Station 725+45
MRM 13.82



Project NH 0085(114)54

Station 442+18.16
MRM 54.24

1:200
Plot Scale -

Plotted From - TRRC12245

SECTION M ESTIMATE OF QUANTITIES

BID ITEM NUMBER	ITEM	QUANTITY	UNIT
633E0010	Cold Applied Plastic Pavement Marking, 4"	1,930	Ft
633E0030	Cold Applied Plastic Pavement Marking, 24"	705	Ft
633E5000	Grooving for Cold Applied Plastic Pavement Marking, 4"	1,235	Ft
633E5015	Grooving for Cold Applied Plastic Pavement Marking, 24"	705	Ft
633E5050	Surface Preparation for Pavement Marking	695	Ft
634E0560	Remove Pavement Marking, 4" or Equivalent	500	Ft

COLD APPLIED PLASTIC PAVEMENT MARKING

All materials will be applied as per the manufacturer's recommendations.

Cold Applied Plastic Pavement Markings will be 3M Series 380 AW or an approved equal.

GROOVING FOR COLD APPLIED PLASTIC PAVEMENT MARKING

The Contractor will establish a positive means for the removal of the grinding and/or grooving residue. Residue from dry grooving will be vacuumed. Solid residue will be removed from the pavement surfaces before being blown by traffic action or wind. The cleaning of the residue from grooving will be to the satisfaction of the Engineer and may require more than one pass to adequately remove material. Contractor will conduct this work to control and minimize airborne dust and similar debris that may become a hazard to motor vehicle operation or nuisance to property owners. Residue from wet grooving will not be permitted to flow across lanes being used by public traffic or into gutter or drainage facilities. Residue, whether in solid or slurry form, will be disposed of in a manner that will prevent it from reaching any waterway in a concentrated state. All costs for removal of grinding and/or grooving residue will be included in the contract unit price per foot for "Grooving for Cold Applied Plastic Pavement Marking" contract items.

SURFACE PREPARATION FOR PAVEMENT MARKING

The Contractor will prepare the pavement surface prior to applying the durable pavement marking in accordance with the following.

In areas where the existing groove meets the required depth and existing markings are still in place, the Contractor will clean the existing groove without adding additional depth beyond the required depth for the new pavement marking, including reflective media as noted below.

Description	Specification	Tolerance
Depth of Groove	Marking Thickness ¹ + 15 mils	+ 5 mils

¹ Marking thickness will include the thickness of marking material and reflective media.

The cleaning will result in the existing pavement marking being adequately scuffed, abraded, and removed by light grinding or abrasive blasting or both to allow proper adhesion of the new durable pavement marking as per the manufacturer's recommendations to comply with product warranties.

Existing grooves not meeting the required depth will be re-grooved to the required depth for the new pavement marking, including reflective media. Equipment for grooving will be capable of the following:

- Grooving the total width of the groove in one pass or uniform depths with multiple passes.
- Grooving without causing damage to the pavement joints or joint sealant material.
- Provide uniform alignment and depth.
- Moving continuously to permit a mobile traffic work operation.

All costs associated with cleaning of the existing groove, including re-grooving, if needed, will be included in the contract unit price per foot for "Surface Preparation for Pavement Marking". Surface preparation will be measured as 4" equivalent.

STATE OF SOUTH DAKOTA	PROJECT	SHEET	TOTAL SHEETS
	NH 0085(00)54 NH 0085(114)54 NH 0212(00)13	M2	M5

Rev. Date: 02/18/2021 TJP

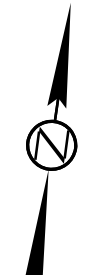
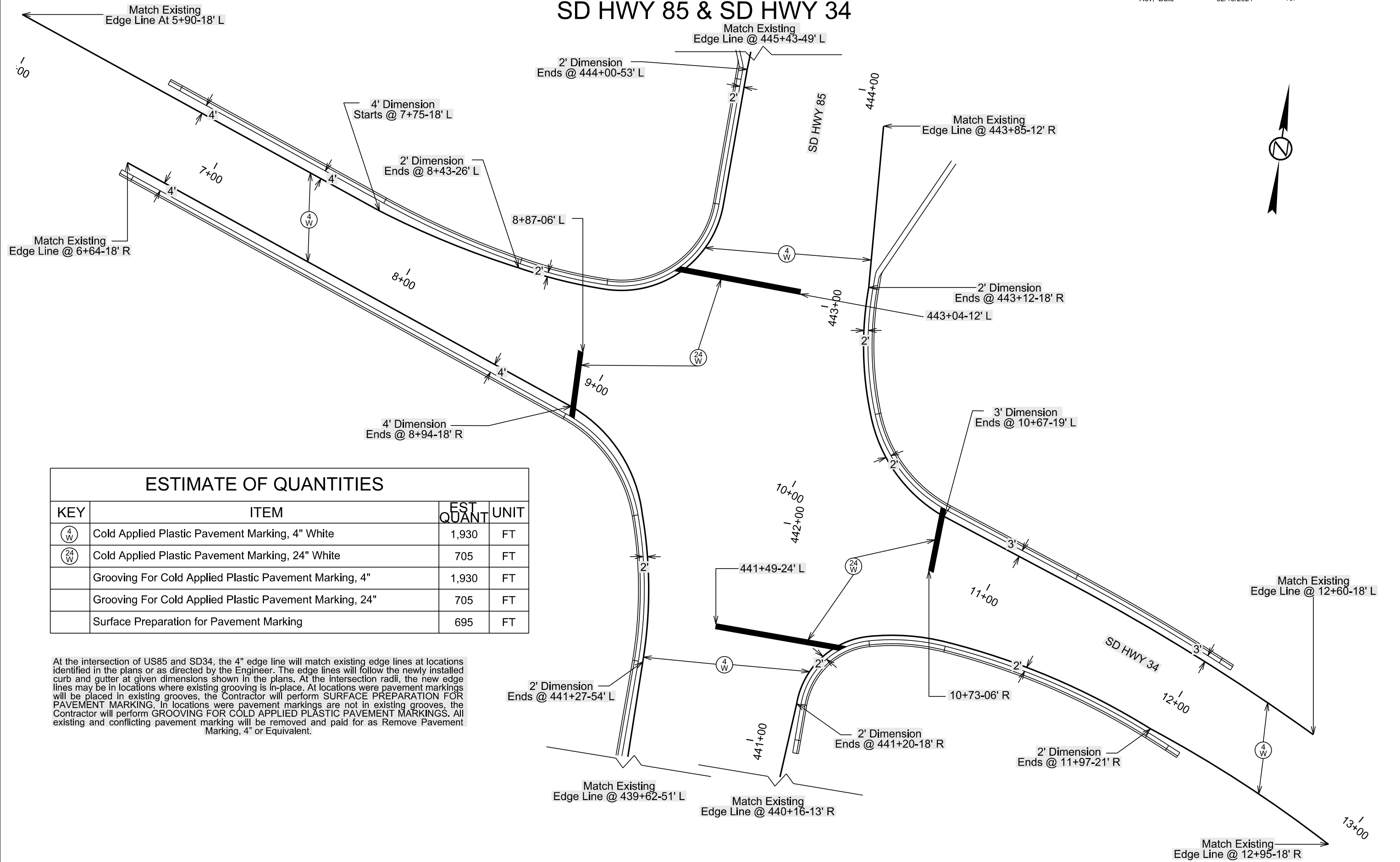
File - ... \p1\Bute05\0\Notes\SectionM.dgn

PAVEMENT MARKING LAYOUT

SD HWY 85 & SD HWY 34

STATE OF SOUTH DAKOTA	PROJECT NH 0085(00)54 NH 0085(114)54 NH 0212(00)13	SHEET M3	TOTAL SHEETS M5
Rev. Date	02/18/2021	TJP	

Plot Scale - 1:40



ESTIMATE OF QUANTITIES

KEY	ITEM	EST QUANT	UNIT
(4 W)	Cold Applied Plastic Pavement Marking, 4" White	1,930	FT
(24 W)	Cold Applied Plastic Pavement Marking, 24" White	705	FT
	Grooving For Cold Applied Plastic Pavement Marking, 4"	1,930	FT
	Grooving For Cold Applied Plastic Pavement Marking, 24"	705	FT
	Surface Preparation for Pavement Marking	695	FT

At the intersection of US85 and SD34, the 4" edge line will match existing edge lines at locations identified in the plans or as directed by the Engineer. The edge lines will follow the newly installed curb and gutter at given dimensions shown in the plans. At the intersection radii, the new edge lines may be in locations where existing grooving is in-place. At locations where pavement markings will be placed in existing grooves, the Contractor will perform SURFACE PREPARATION FOR PAVEMENT MARKING. In locations where pavement markings are not in existing grooves, the Contractor will perform GROOVING FOR COLD APPLIED PLASTIC PAVEMENT MARKINGS. All existing and conflicting pavement marking will be removed and paid for as Remove Pavement Marking, 4" or Equivalent.

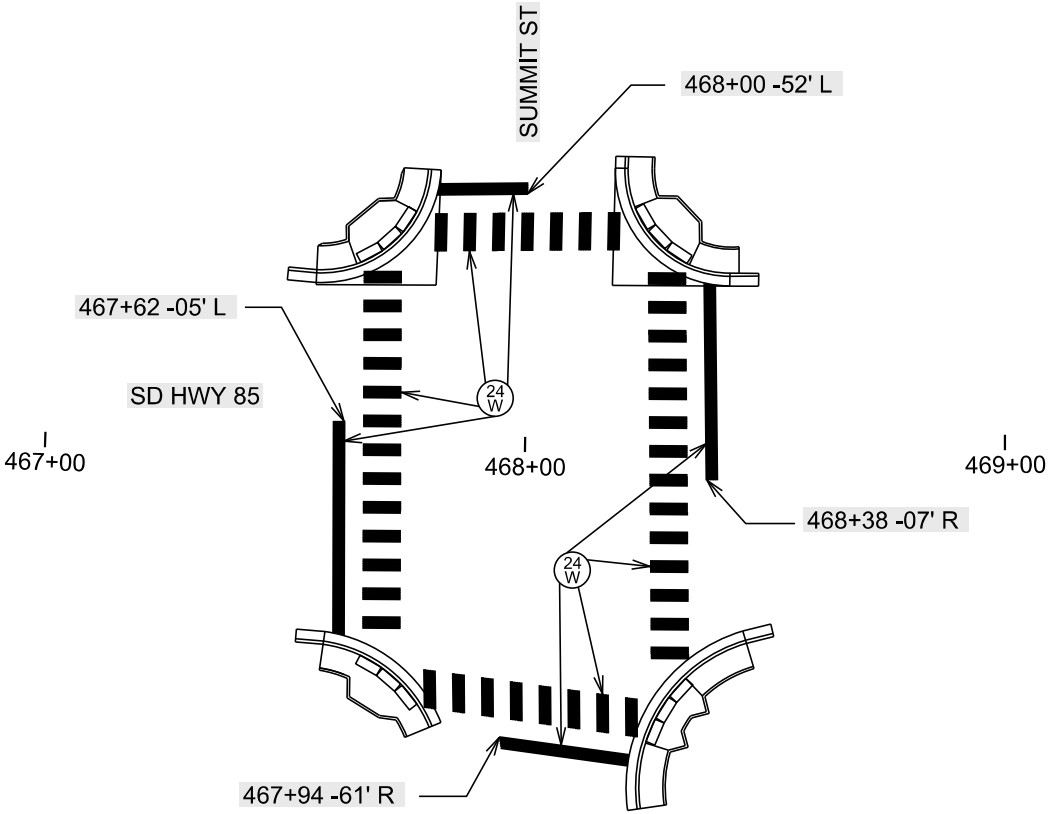
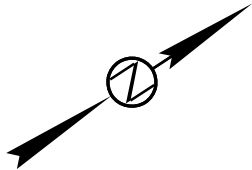
Plotted From - TRRC12245

File - U:\trc\proj\Bute05\0442pm.dgn

PAVEMENT MARKING LAYOUT

SD HWY 85 & SUMMIT ST

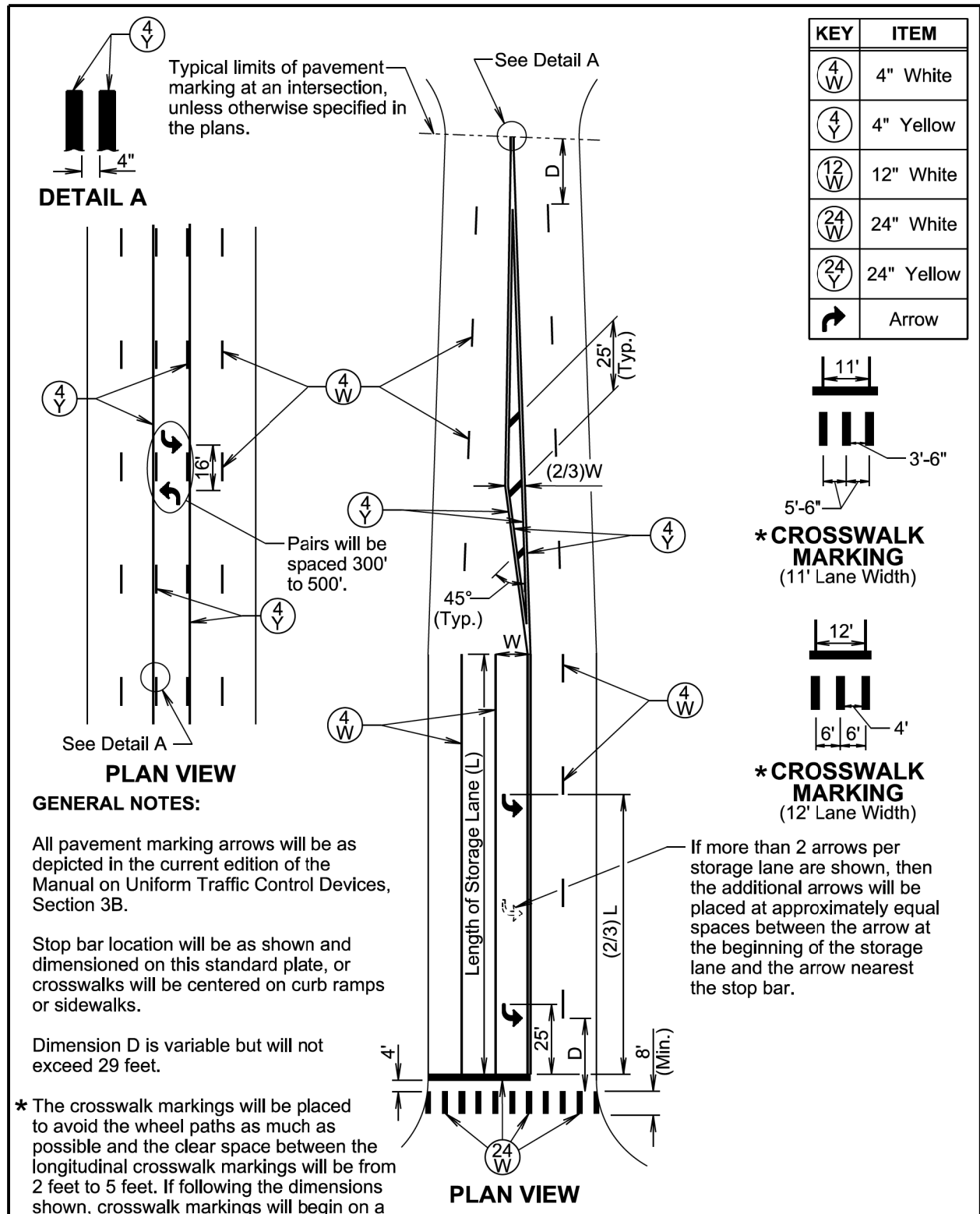
STATE OF SOUTH DAKOTA	PROJECT	SHEET	TOTAL SHEETS
	NH 0085(00)54 NH 0085(114)54 NH 0212(00)13	M4	M5
	Plotting Date: 02/18/2021		



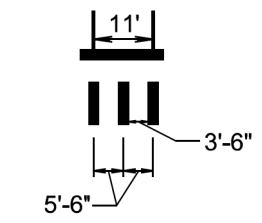
Plot Scale - 1:40

Plotted From - TRRC12245

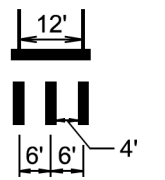
File - U:\trproj\Bute05\0468pm.dgn



KEY	ITEM
④ W	4" White
④ Y	4" Yellow
⑫ W	12" White
⑫ Y	12" Yellow
⑳ W	24" White
⑳ Y	24" Yellow
↶	Arrow



*** CROSSWALK MARKING**
(11' Lane Width)



*** CROSSWALK MARKING**
(12' Lane Width)

GENERAL NOTES:

- All pavement marking arrows will be as depicted in the current edition of the Manual on Uniform Traffic Control Devices, Section 3B.
- Stop bar location will be as shown and dimensioned on this standard plate, or crosswalks will be centered on curb ramps or sidewalks.
- Dimension D is variable but will not exceed 29 feet.
- * The crosswalk markings will be placed to avoid the wheel paths as much as possible and the clear space between the longitudinal crosswalk markings will be from 2 feet to 5 feet. If following the dimensions shown, crosswalk markings will begin on a lane line or centerline.
- If more than 2 arrows per storage lane are shown, then the additional arrows will be placed at approximately equal spaces between the arrow at the beginning of the storage lane and the arrow nearest the stop bar.

August 27, 2020

Published Date: 1st Qtr. 2021	S D D O T	PAVEMENT MARKINGS FOR ADJACENT INTERSECTIONS AND CENTER TURN LANE	PLATE NUMBER 633.01
			Sheet 1 of 1