

October 1, 2021

Re: Project's NH 0018(184)39, NH 018B(02)40, NH 0385(48)35, NH 0385(60)35, NH 0385(00)35, HS 2020-100 () & 2021-001 – PCN's 03TH, 06DE, 028Z, 07V4, 07W3, X05J & X05P – US18, US18B & US385 Urban Reconstruction in Hot Springs, Suspended Sidewalk, City Water Main and Sanitary Sewer.

To Whom It May Concern,

A pre-bid meeting for the Hot Springs urban reconstruction project is being held on October 21st, 2021 at 1:00 PM MDT in Hot Springs, SD. Interested contracting parties are invited to attend the meeting in-person at the Mueller Center in Hot Springs or virtually via the Microsoft Teams Meeting Link provided below.

Mueller Center
801 South 6th Street
Hot Springs, SD 57747

This meeting will include a presentation of the project covering topics such as the overall scope of work, design aspects, traffic control, and contract time. There will be an opportunity for Contractors to present questions to Department staff, consultants, and project stakeholders. In addition, at the conclusion of the meeting, an on-site tour of the project will be offered to those attending in-person.

Attendance is not a requirement, but all interested contracting parties are strongly encouraged to attend.

If attending the meeting virtually you must join the meeting via the link provided. In order to reduce sound feedback please mute the microphone on your computer. When joining virtually we are requesting that you please enter the name of your company followed by the individuals from your company attending the meeting into the chat feature of Microsoft Teams.

Join Pre-Bid Meeting

Date: October 21, 2021

Time: 1:00-2:30 (MDT)

Video Conference ID: 119 433 928 6

Additional instructions regarding the meeting format will be provided at the beginning of the meeting.

We look forward to seeing you there!

Sincerely,
SD DOT

SECTION L: LIGHTING PLANS

FOR BIDDING PURPOSES ONLY

STATE OF SOUTH DAKOTA	PROJECT NH 0385(48)35	SHEET L1	TOTAL SHEETS L10
-----------------------	--------------------------	-------------	---------------------

Plotting Date: 26-MAY-2021
Revision Date: 26-MAY-2021

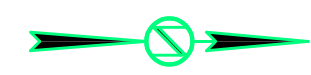
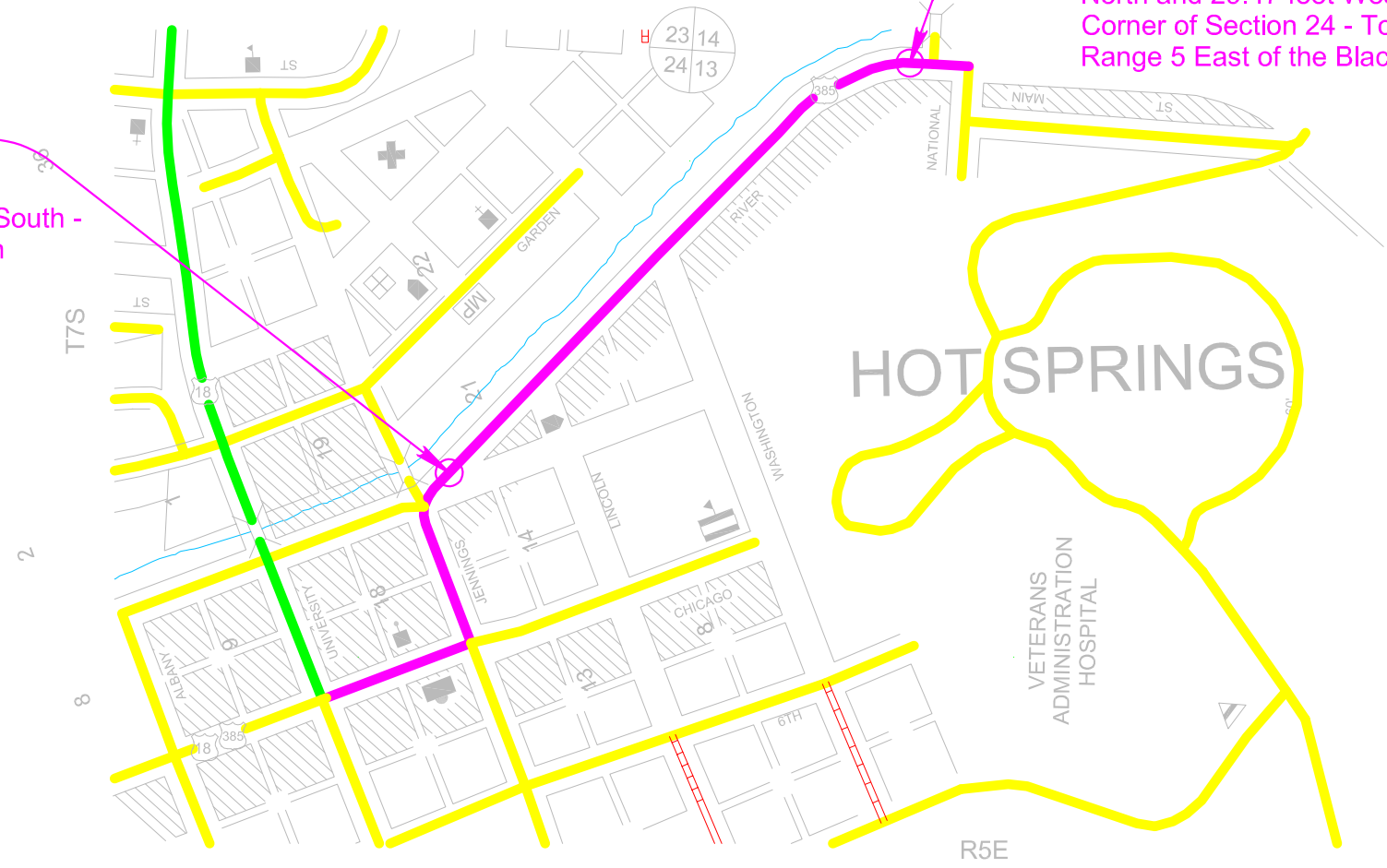
WPE WEST PLAINS ENGINEERING, INC.
1750 RAND ROAD • RAPID CITY, SD 57702
PHONE: (605) 348-7455 • FAX: (605) 348-9445
www.westplainsengineering.com
RAPID CITY, SD • SIOUX FALLS, SD • GASPERS, WY • CEDAR RAPIDS, IA
WPE#BR20020

INDEX OF SHEETS

- L1 General Layout with Index
- L2-L3 Estimate With General Notes & Tables
- L4-L6 Conduit Layouts
- L7 Wiring Diagram
- L8-L10 Standard Plates

BEGIN GRADING
Station 108+61 - Located 610.16 feet South and 1029.28 feet East of the NW Corner of Section 24 - Township 7 South - Range 5 East of the Black Hills Meridian

END GRADING
Station 124+34 - Located 527.35 feet North and 29.47 feet West of the Southwest Corner of Section 24 - Township 7 South - Range 5 East of the Black Hills Meridian



SECTION L ESTIMATE OF QUANTITIES

Section L - Signal & Lighting

BID ITEM NUMBER	ITEM	QUANTITY	UNIT
110E1540	Remove Luminaire Pole Footing	40	Each
110E5100	Salvage Luminaire Pole	40	Each
635E0901	Decorative Luminaire Pole with Arm	14	Each
635E3815	Decorative Luminaire, LED with Photoelectric Cell	14	Each
635E5020	2' Diameter Footing	112.0	Ft
635E5400	Electrical Service Cabinet	1	Each
635E6200	Miscellaneous, Electrical	Lump Sum	LS
635E8120	2" Rigid Conduit, Schedule 40	1,414	Ft
635E8130	3" Rigid Conduit, Schedule 40	136	Ft
635E8230	3" Rigid Conduit, Schedule 80	57	Ft
635E9012	1/C #2 AWG Copper Wire	654	Ft
635E9013	1/C #3 AWG Copper Wire	3,420	Ft
635E9014	1/C #4 AWG Copper Wire	1,362	Ft
635E9016	1/C #6 AWG Copper Wire	1,890	Ft
635E9024	1/C #14 AWG Copper Wire	770	Ft
635E9710	2/C #10 AWG Copper Pole and Bracket Cable	770	Ft

SUPPLYING AS BUILT PLANS

If the roadway lighting system is constructed differently than what is stated in the plans, the Contractor will supply as built plans to the Engineer and a copy will be sent to the Traffic Design Engineer. The as built plans may include conduit layouts, wiring diagrams, or other drawings depicting the changes from the original plans.

SHOP DRAWING AND CATALOG CUTS SUBMITTALS

The Contractor will submit shop drawings and catalog cuts in accordance with Section 985 of the Specifications.

Adobe PDF submittals will be sent to the following email addresses:

Timothy.Pyle@state.sd.us
Kelly.VanDeWiele@state.sd.us

REMOVE LUMINAIRE POLE FOOTING

The footings of existing luminaire poles EL1-EL40 will be removed by the Contractor to a minimum of 2' below the ground surface. Restoration of the disturbed area will be to the satisfaction of the Engineer.

All costs for removing the footings of the existing luminaire poles will be incidental to the contract unit price per each for "Remove Luminaire Pole Footing".

MISCELLANEOUS, ELECTRICAL

The Contractor will disconnect and remove the existing lighting system wiring between EL1 – EL40. All costs for labor and material to disconnect and remove the existing lighting system wiring will be incidental to the contract lump sum price for "Miscellaneous, Electrical".

SALVAGE LUMINAIRE POLE

Existing luminaire poles EL1-EL40 will be salvaged and delivered to the City of Hot Springs by the Contractor. The Contractor will notify the City 5 days before the delivery of the salvaged luminaire poles. The City contact is John Gregory, City Administrator at (605) 745-3135. The poles will be delivered to:

Hot Springs City Maintenance
 2001 Hwy 18 Bypass
 Hot Springs, SD 57747

Poles damaged during salvaging or delivery will be repaired or replaced by the Contractor at no cost to the State.

All costs for work involved in the salvage and delivery of the existing luminaire poles will be incidental to the contract unit price per each for "Salvage Luminaire Pole".

WIRE SPLICING FOR LIGHTING

All wire splices for lighting will be made using TE Connectivity GTAP connectors, NSI Industries Polaris Blue connectors, or an approved equal.

LUMINAIRE POLES

Decorative Luminaire (D)
 D1 – D14 Luminaire poles will have a mounting height of 35' and 4' arms.

D1 – D14 will be designed for loads generated by twin 3'x5' flags mounted perpendicular to roadway, on 6' long flag poles, mounting will be at 45° at 10' height measured from the top of the footing to the flag holders, and holiday decorations that are 4' x 4', weigh 17.9 lbs. and mounted 15' above top of footing. Flags and holiday decorations will not be attached to the luminaire poles at the same time. Poles also need to be designed to include loads created by signs that are 4' x 5' in size and mounted at 7 feet from the top of the footing to the bottom of the sign.

Decorative Luminaire poles D1 – D14, Pole will have a convenience duplex festoon outlet receptacle (15-amp, 3 wire) suitable for outdoor use.

The Contractor will provide the following listed decorative luminaire pole and attachments or approved equals:

- Valmont Pole Model FL210
- Holophane Decorative Arm Model BHC48
- Decorative Arm Fitter BHDF13
- Decorative Base AT22CSB
- Flagpole Attachment FPH
- Color – Luminaire poles and attachments will have a bronze coated finish

LUMINAIRES – (D1 – D14)

The lighting design used the following parameters and provides 1.2 and greater average maintained foot-candles and uniformity ratios of 3:1 (average maintained to minimum maintained foot-candles) and 5:1 (maximum to minimum maintained foot candles):

- Pole Setback: Varies
- Lamp Loss Factor (LLF): 0.8
- Width of Lighted Area: 50 Ft.
- Spacing: 110 Ft.

FOR BIDDING PURPOSES ONLY

STATE OF SOUTH DAKOTA	PROJECT	SHEET	TOTAL SHEETS
	NH 0385(48)35	L2	L10

LUMINAIRES – (D1 – D14)- CONTINUED Plotting Date: 18-AUGUST-2021
 Revision Date: 18-AUGUST-2021

Configuration: One-Sided
 Mounting Height: 35 Ft.
 Arm Length: 4 Ft.
 Light Source: 175W LED

Contractor to submit the following LED luminaire or an approved equal that will meet the requirements of the design parameters:

a.) Holophane: ESL2_P50S_40K_xx_TG_3_SS

TABLE OF FOOTING DATA

Site Designation	Footing Diameter	* Footing Depth	**Spiral Diameter	**Spiral Length	Vertical Reinforcement
D1 - D14	2' - 0"	8' - 0"	1' - 8"	54' - 9"	8-#7 x 7' - 6"

* Footing depth will be below ground level.
 ** The size of all spirals will be #3.

A subsurface investigation was conducted within the project limits in May 2018. Subsurface conditions throughout the project consist of red to brown clay silt to silty sand. Borings placed during the subsurface investigation were drilled to a depth of 10 feet; all the borings were dry at the time of the investigation and remained open overnight to depths below the proposed footings.

Construction activities will be sequenced in a manner such that excavations within 10 feet of any proposed footing will be completed and backfilled prior to excavation of cylindrical footings. Backfill of excavations within 10 feet of proposed footings will be with material approved by the Engineer placed in loose lifts not to exceed 6 inches and compacted according to the Specified Density Method.

Some of the luminaire footing locations are close to the newly placed storm sewer. If the storm sewer backfill material is too granular caving may occur during drilling for the footings. Cohesive backfill or controlled density fill will be used at footing locations that are close to the new storm sewer. 50 cubic yards (See Section B) of controlled density fill is included in the plans for use as deemed necessary.

During construction of the footings, concrete placement operations should closely follow excavation procedures. The longer excavations are left open the more likely caving may occur. If caving soils are encountered it may be necessary to use casing or drilling fluids to maintain an open excavation. Casing will be of sufficient strength to withstand handling and installation procedures. Casing material may consist of Sonotube, corrugated metal pipe, pvc, smooth metal pipe or any other material as approved by the Engineer. Drilling fluids can be water or other slurries as approved by the engineer. Concrete placed through drilling fluids will be tremied. If caving is not an issue but, water is present, it will be removed prior to concrete placement or the concrete will be tremied.



CONDUIT LAYOUT

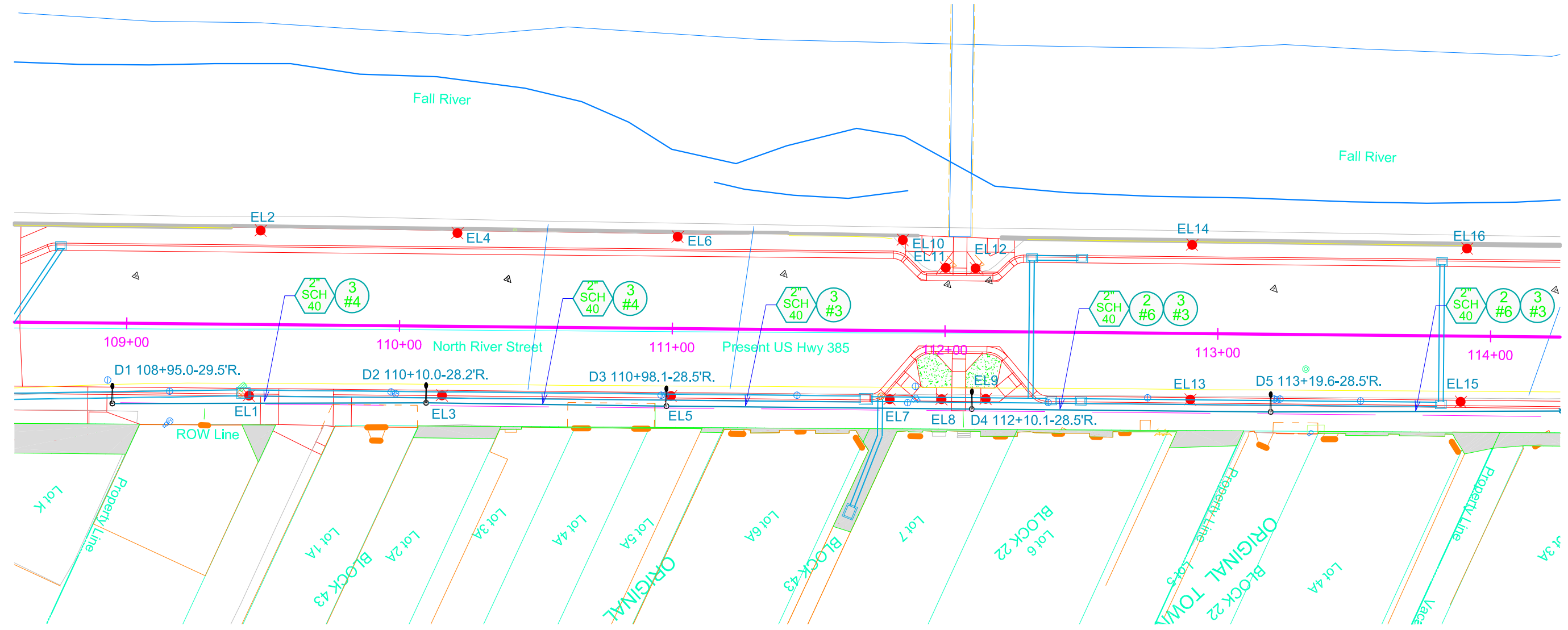
SD HWY 385 / N RIVER ST

FOR BIDDING PURPOSES ONLY

STATE OF SOUTH DAKOTA	PROJECT NH 0385(48)35	SHEET L4	TOTAL SHEETS L10
-----------------------	--------------------------	-------------	---------------------

Plotting Date: 26-MAY-2021
Revision Date: 26-MAY-2021

WPE WEST PLAINS ENGINEERING, INC.
1750 RAND ROAD • RAPID CITY, SD 57702
PHONE: (605) 348-7455 • FAX: (605) 348-9445
www.westplainsengineering.com
RAPID CITY, SD • SIOUX FALLS, SD • GASPERS, WY • CEDAR RAPIDS, IA
WPE#BR20020

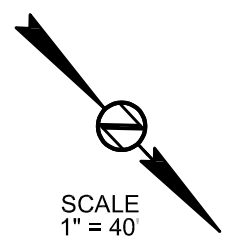


ESTIMATE OF QUANTITIES

KEY	ITEM	EST QUANT	UNIT	KEY	ITEM	EST QUANT	UNIT
•	SALVAGE LUMINAIRE POLE (EL1-EL40)	40	EACH	2" SCH 40	2" RIGID CONDUIT, SCHEDULE 40	1,414	FT
•	REMOVE LUMINAIRE POLE FOOTING (EL1-EL40)	40	EACH	3" SCH 40	3" RIGID CONDUIT, SCHEDULE 40	136	FT
•	DECORATIVE LUMINAIRE POLE W/4' ARM 35' MOUNTING HEIGHT (D1-D14)	14	EACH	3" SCH 80	3" RIGID CONDUIT, SCHEDULE 80	57	FT
•	DECORATIVE LUMINAIRE, LED W/ P.E. (D1-D14)	14	EACH	#2	1/C #2 AWG COPPER WIRE	654	FT
○	2' DIAMETER FOOTING (D1-D14)	FT	FT	#3	1/C #3 AWG COPPER WIRE	3,420	FT
▲	ELECTRIC SERVICE CABINET	1	EACH	#4	1/C #4 AWG COPPER WIRE	1,362	FT
∅	GALVANIZED STEEL UTILITY POLE NOT A BID ITEM	1	EACH	#6	1/C #6 AWG COPPER WIRE	1,890	FT
Ⓜ	METER SOCKET NOT A BID ITEM	1	EACH		1/C #14 AWG COPPER WIRE	770	FT
					2/C #10 AWG COPPER POLE & BRACKET CABLE	700	FT

NOTE:

CAREFULLY COORDINATE TRENCHING WITH SEWER, WATER LINES. HAND DIG WHERE NECESSARY, ADJUST JUNCTION BOXES AND FOOTING OFFSETS TOWARD CURB IF REQUIRED.



CONDUIT LAYOUT

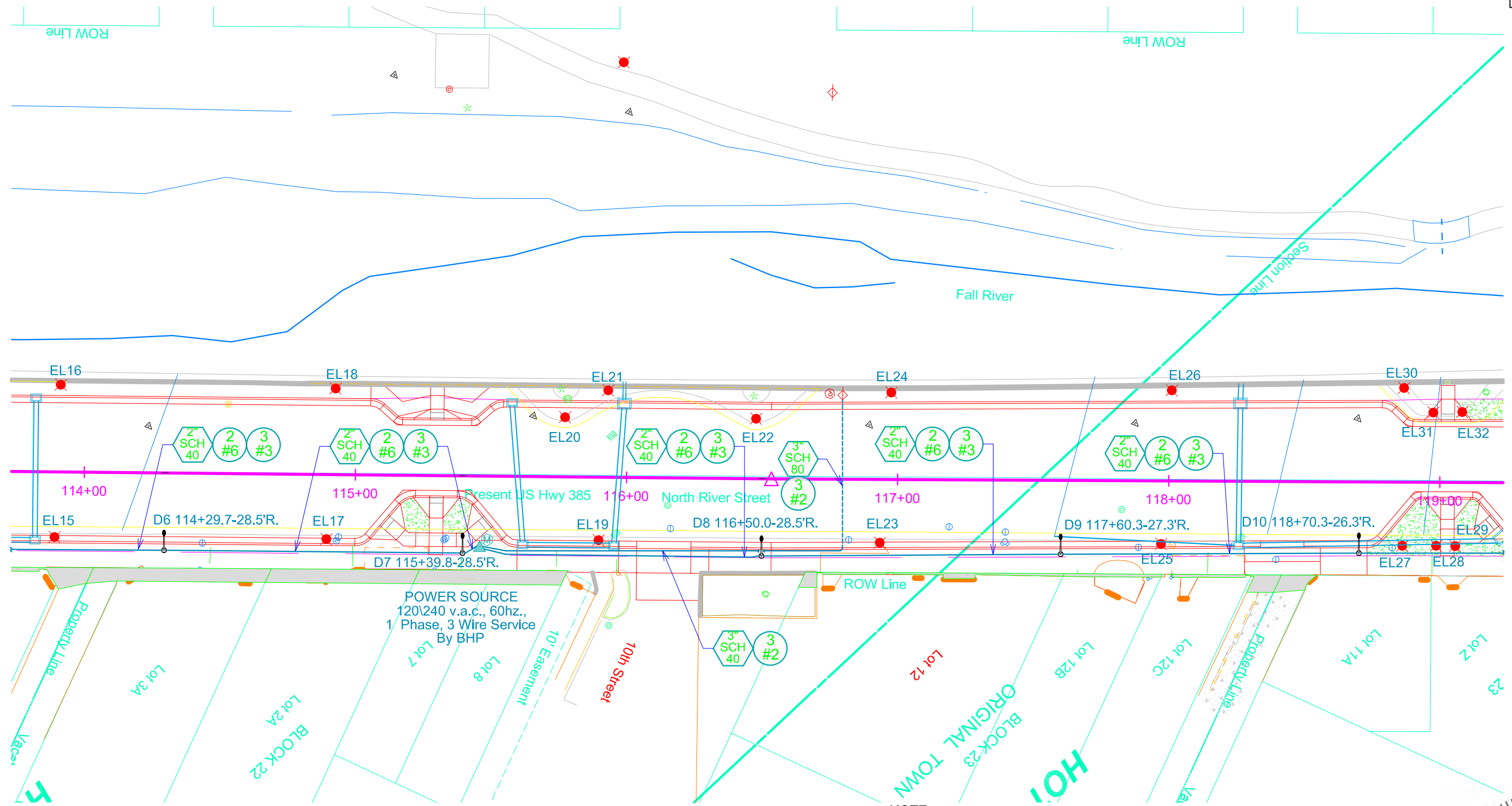
SD HWY 385 / N RIVER ST

FOR BIDDING PURPOSES ONLY

STATE OF SOUTH DAKOTA	PROJECT NH 0385(48)35	SHEET L5	TOTAL SHEETS L10
-----------------------	--------------------------	-------------	---------------------

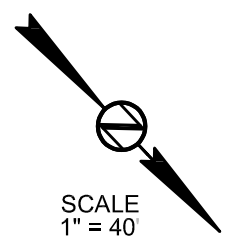
Plotting Date: 26-MAY-2021
Revision Date: 26-MAY-2021

WPE WEST PLAINS ENGINEERING, INC.
1750 RAND ROAD • RAPID CITY, SD 57702
PHONE: (605) 348-7455 • FAX: (605) 348-9445
www.westplainsengineering.com
RAPID CITY, SD • SIOUX FALLS, SD • GASP, WY • CEDAR RAPIDS, IA
WPE#BR20020



NOTE:

CAREFULLY COORDINATE TRENCHING WITH SEWER, WATER LINES. HAND DIG WHERE NECESSARY, ADJUST JUNCTION BOXES AND FOOTING OFFSETS TOWARD CURB IF REQUIRED.



SCALE
1" = 40'



CONDUIT LAYOUT

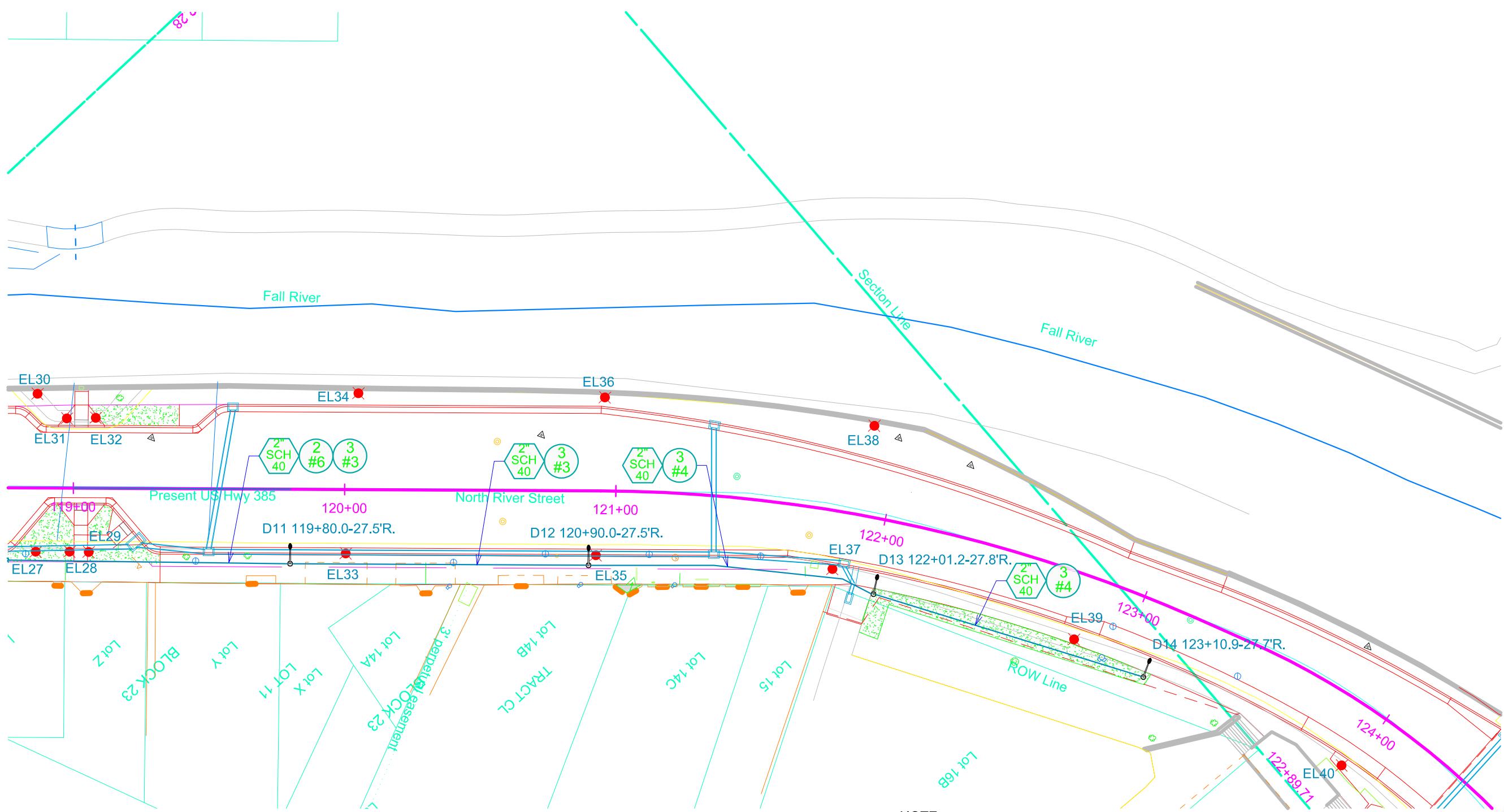
SD HWY 385 / N RIVER ST

FOR BIDDING PURPOSES ONLY

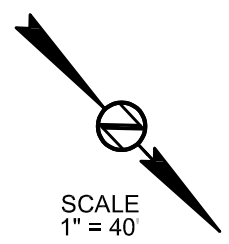
STATE OF SOUTH DAKOTA	PROJECT NH 0385(48)35	SHEET L6	TOTAL SHEETS L10
-----------------------	--------------------------	-------------	---------------------

Plotting Date: 26-MAY-2021
Revision Date: 26-MAY-2021

WPE WEST PLAINS ENGINEERING, INC.
1750 RAND ROAD • RAPID CITY, SD 57702
PHONE: (605) 348-7455 • FAX: (605) 348-9445
www.westplainsengineering.com
RAPID CITY, SD • SIOUX FALLS, SD • GASPERS, WY • CEDAR RAPIDS, IA
WPE#BR20020



NOTE:
CAREFULLY COORDINATE TRENCHING WITH SEWER, WATER LINES. HAND DIG WHERE NECESSARY, ADJUST JUNCTION BOXES AND FOOTING OFFSETS TOWARD CURB IF REQUIRED.



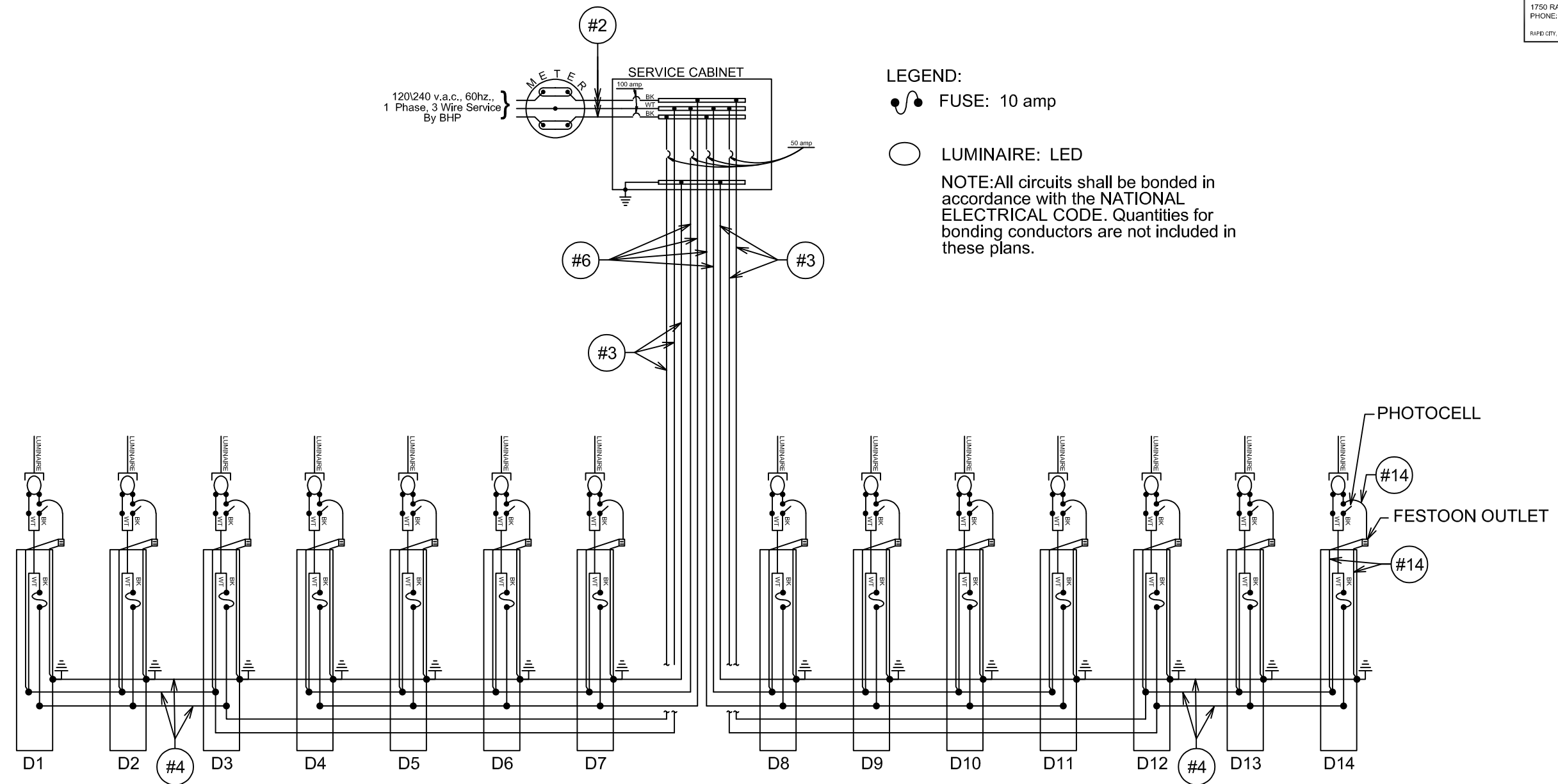
WIRING DIAGRAM

FOR BIDDING PURPOSES ONLY

STATE OF SOUTH DAKOTA	PROJECT NH 0385(48)35	SHEET L7	TOTAL SHEETS L10
-----------------------	--------------------------	-------------	---------------------

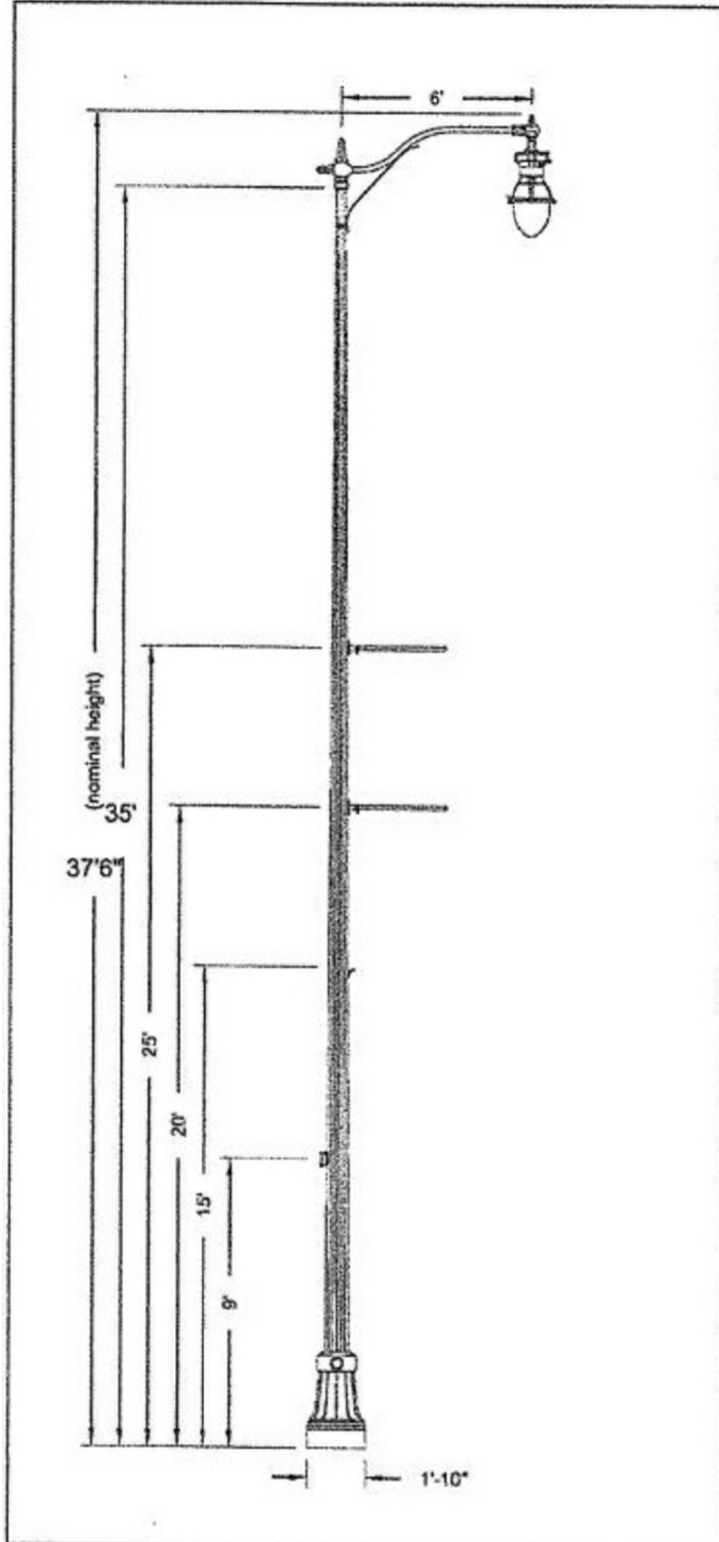
Plotting Date: 26-MAY-2021
Revision Date: 26-MAY-2021

WPE WEST PLAINS ENGINEERING, INC.
1750 RAND ROAD • RAPID CITY, SD 57702
PHONE: (605) 348-7455 • FAX: (605) 348-9445
www.westplainsengineering.com
RAPID CITY, SD • SIOUX FALLS, SD • GASPERS, WY • CEDAR RAPIDS, IA
WPE#BR20020



Plotting Date: 18-AUGUST-2021
Revision Date: 18-AUGUST-2021

WPE WEST PLAINS ENGINEERING, INC.
1750 RAND ROAD • RAPID CITY, SD 57702
PHONE: (605) 348-7455 • FAX: (605) 348-9445
www.westplainsengineering.com
RAPID CITY, SD • SIOUX FALLS, SD • CASPER, WY • CEDAR RAPIDS, IA
WPE#BR20020



Specifications

POST DESCRIPTION
The lighting post shall be all steel, one piece construction, consisting of a tapered shaft welded to a steel anchor base. The post shall be provided with (1) Ø24" clamshell base cover, (2) 30" banner arms, (1) GFI receptacle with large, in-use wet location cover, (1) Cincinnati cross-arm modified to bolt-on, and (1) Boston Harbour roadway arm, 72" from post center to luminaire center.

MATERIAL
The shaft shall conform to ASTM A595 Grade-A and is supplied in 11 gauge thickness. The anchor base is fabricated from structural quality hot rolled carbon steel plate conforming to ASTM A36. The base plate telescopes the pole shaft and is circumferentially welded top and bottom.

DIMENSIONS
The post shall be 38'-9" in height with a 13" square base and 13" bolt circle.

WIRE ACCESS
A reinforcing handhole rim is provided on the post and is made of a rectangular shaped tubing material. The handhole is welded in the post shaft and is located above the base.

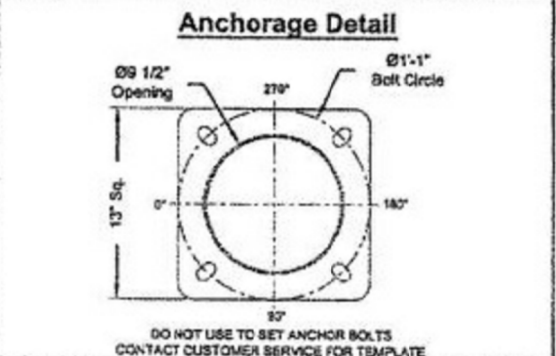
INSTALLATION
The post shall be provided with (4) 1" anchor bolts with decorative nut covers for each.

FINISH
Pole will have a Holophane bronze finish.

LUMINAIRE
- Esplanade, 400W HPS Mogul, 240V, Quick Lock Stem Mount, Bronze Finish, Teardrop Type IV, NEMA Twistlock Photocontrol Receptacle, DTL Twistlock Photocontrol
- Utility Granville, Standard M Housing, 150W HPS Mogul, 240V, Bronze, Asymmetric Type III, No Ribs/Bands, Spike Finish, Bronze, NEMA Twistlock Photocontrol Receptacle, DTL Twistlock Photocontrol

Accessory Mounting Detail

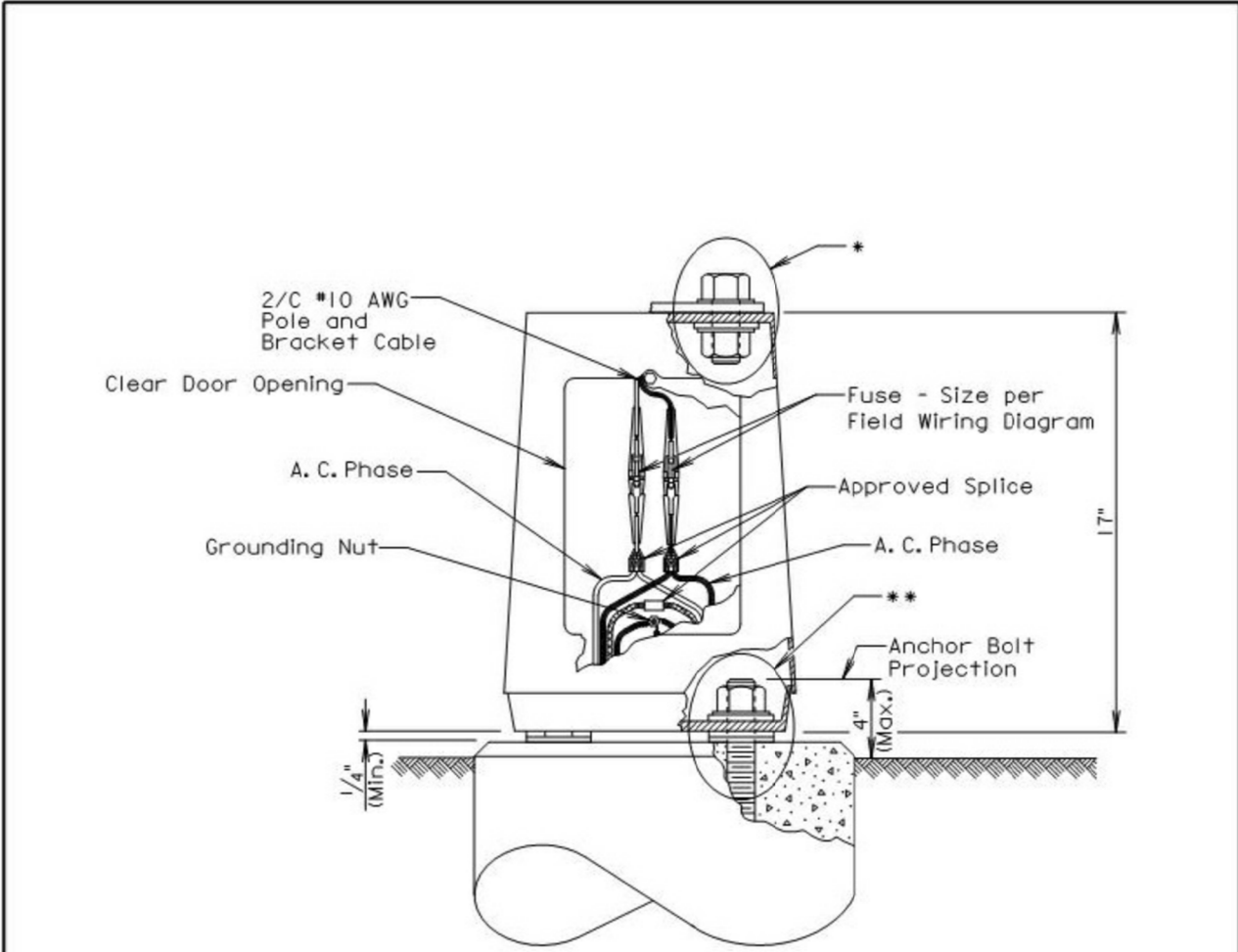
	Orientation	Height
MODIFIED CROSSARM	180°	15'-0"
BANNER ARMS	180°	20'-0" & 25'-0"
RECEPTACLE	0°	8'-0"



Catalog #'s:
46 ft F WITH CLAMHELL BASE/ACCESSORIES RFD125459
Pole: FL210-950A385-P5-FP-HH-LAB-(1)MNT-PLT-(2)BNR-ARM-FST-HN2AAC
Roadway Arm: BHC72/1CADGH
Anchor Bolts: 1" SDDOT 165KSI STRAIGHT BOLTS

Receptacle: FGJUL-SBZH
STANDARD MATERIAL
Luminaire/Fitter:
Luminaire/Lamp:
CUSTOMER: PLEASE VERIFY PLACEMENT OF ACCESSORIES IN THE "ACCESSORY MOUNTING DETAIL" TABLE - INFORMATION NECESSARY FOR ENSURING ORDER IS PLACED AS NEEDED.

Customer Signature _____ Date _____



GENERAL NOTES:

Base details are provided for example only and are not intended to be a complete design. Fused connectors shall be breakaway type.

*Hardware connecting the pole to the base shall be installed in accordance with the manufacturer's recommendation.

**Hardware connecting the base to the footing shall be installed in accordance with the manufacturer's recommendation. The Contractor shall install leveling devices in accordance with the manufacturer's recommendation if shimming is necessary to install the light poles plumb and level. The washers and shims shall be installed around the anchor bolts.



Hot Springs SD

ORDER #:	TYPE:	DRAWING #:
REVISION: 2	REVISION DATE:	
DRAWN: MAB	ORIGIN DATE:	PAGE: 1 of 1

THIS DRAWING, WHEN APPROVED, SHALL BECOME THE COMPLETE SPECIFICATION FOR THE MATERIAL TO BE FURNISHED BY HOLOPHANE ON THE ORDER NOTED ABOVE. A LIST OF SIMILAR DESIGN MAY BE SUPPLIED, BUT ONLY AFTER APPROVAL BY THE CUSTOMER IN WRITING. ON POLE ORDERS AN ANCHOR BOLT TEMPLATE PRINT WILL BE SUPPLIED WITH EACH ANCHOR BOLT ORDER TO MATCH THE POLE PROVIDED. THIS PRINT IS THE PROPERTY OF HOLOPHANE AND IS LOANED SUBJECT TO RETURN UPON DEMAND AND UPON EXPRESS CONDITION THAT IT WILL NOT BE USED DIRECTLY OR INDIRECTLY IN ANY WAY CONTRARY TO OUR INTERESTS, AND ONLY IN CONNECTION WITH MATERIAL FURNISHED BY HOLOPHANE.

September 6, 2015

SDDOT

ROADWAY LUMINAIRE POLE BREAKAWAY TRANSFORMER BASE

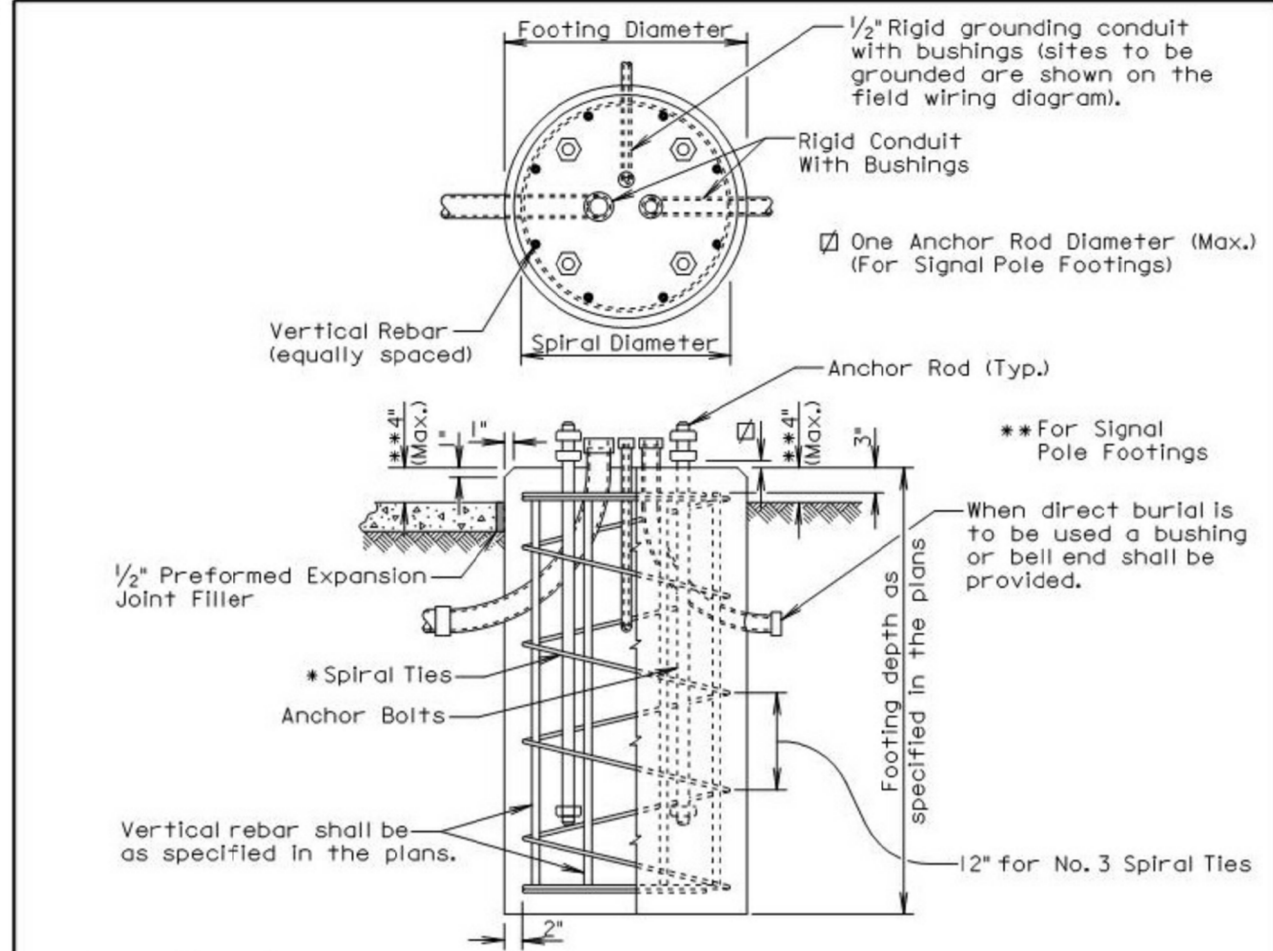
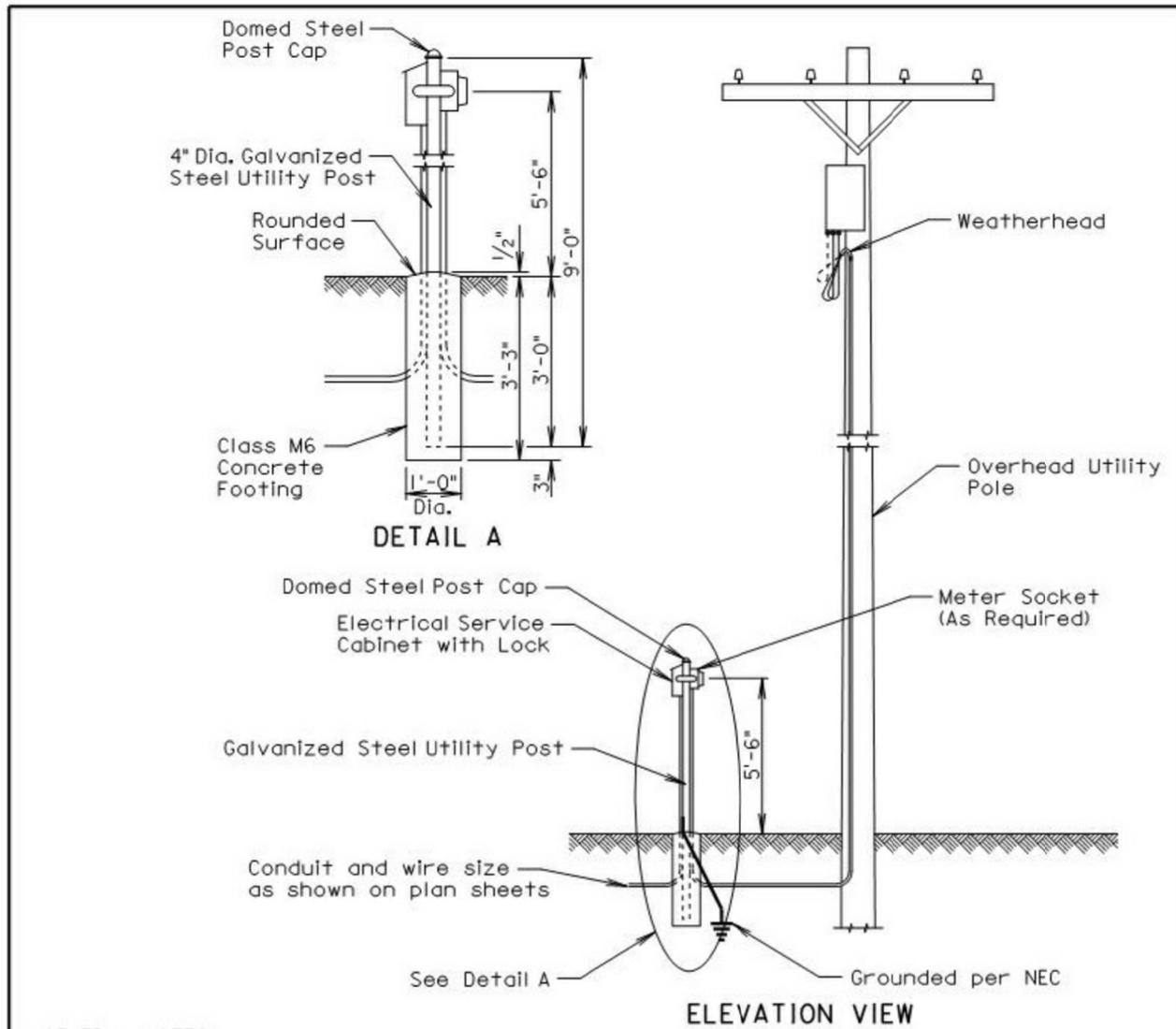
PLATE NUMBER
635.21

Published Date: 3rd Qtr. 2021

Sheet 1 of 1

Plotting Date: 18-AUGUST-2021
Revision Date: 18-AUGUST-2021

WPE WEST PLAINS ENGINEERING, INC.
1750 RAND ROAD • RAPID CITY, SD 57702
PHONE: (605) 348-7455 • FAX: (605) 348-9445
www.westplainsengineering.com
RAPID CITY, SD • SIOUX FALLS, SD • GASPERS, WY • CEDAR RAPIDS, IA
WPE#BR20020



GENERAL NOTES:

- * Circular ties may be used in lieu of the spiral ties. The No. 3 ties shall be spaced 12 inches apart except for the top two which shall be spaced 6 inches apart. The ties shall be lapped 18 inches and the laps shall be staggered around the cage.
- Spiral ties shall have 1-1/2 extra turns at each end.
- See Section 985 of the Specifications for footing materials.
- Conduits and bushings may project 2 1/2 inches to 6 inches above footing for fixed base poles but shall not project above the slip plane or fracture plane for breakaway poles.
- Conduits shall be sealed water-tight during all phases of construction until poles are in place.
- The anchor rods shall fit inside the reinforcing steel cage. If the anchor rods designed by the Pole Manufacturer do not fit, contact the Office of Bridge Design for footing redesign. No additional payment will be made for the redesigned footing.
- Costs of conduit and conduit bushings shown on footing detail shall be incidental to the footing bid item(s).
- The pole shall not be installed until the concrete has attained design strength (4000 psi).
- The contour of the area surrounding the breakaway pole shall be flat, though not necessarily level for a distance of 5 feet in all directions. The Contractor may be required to provide finish grading at some breakaway pole locations.

GENERAL NOTES:

The service cabinet shall include an externally mounted 15A receptacle outlet. The receptacle shall be housed in a lockable NEMA 3R enclosure. The Contractor shall furnish a lock and keys to the Engineer as directed.

The concrete for the post footing shall be class M6 concrete.

The 4" diameter galvanized steel utility post shall be 9' long and shall be in conformance with AASHTO Standard Specifications M181. The post shall be Type 1 and either Grade 1 or Grade 2. The domed steel post cap shall be in conformance with AASHTO Standard Specifications M181 and shall be Type 1.

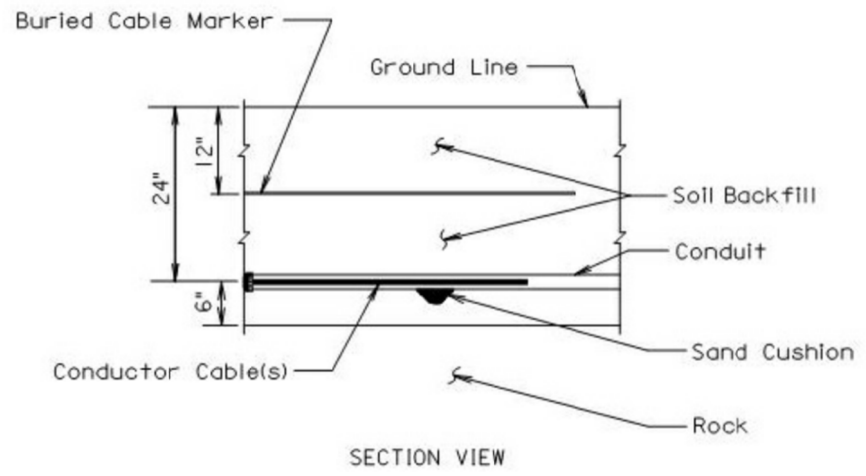
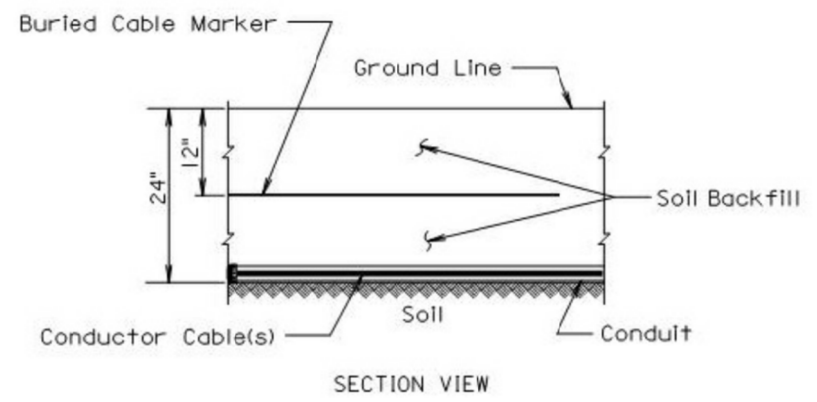
The Contractor shall contact and coordinate his/her work with the Utility Companies regarding hookup requirements, fees, materials, and equipment necessary.

All costs for furnishing and installing all materials from the electrical service cabinet to the transformer including labor, equipment, hookup fees, all items within the cabinet, lockable enclosure with receptacle outlet, lock and keys, post, concrete footing, post cap, meter socket if required, conduit, and incidentals shall be incidental to the contract unit price per each for "Electrical Service Cabinet".

June 26, 2016

Published Date: 3rd Qtr. 2021	S D D O T	GALVANIZED STEEL UTILITY POST WITH OVERHEAD UTILITY POLE	PLATE NUMBER 635.35
			Sheet 1 of 1

Published Date: 3rd Qtr. 2021	S D D O T	POLE FOOTING	PLATE NUMBER 635.55
			Sheet 1 of 1

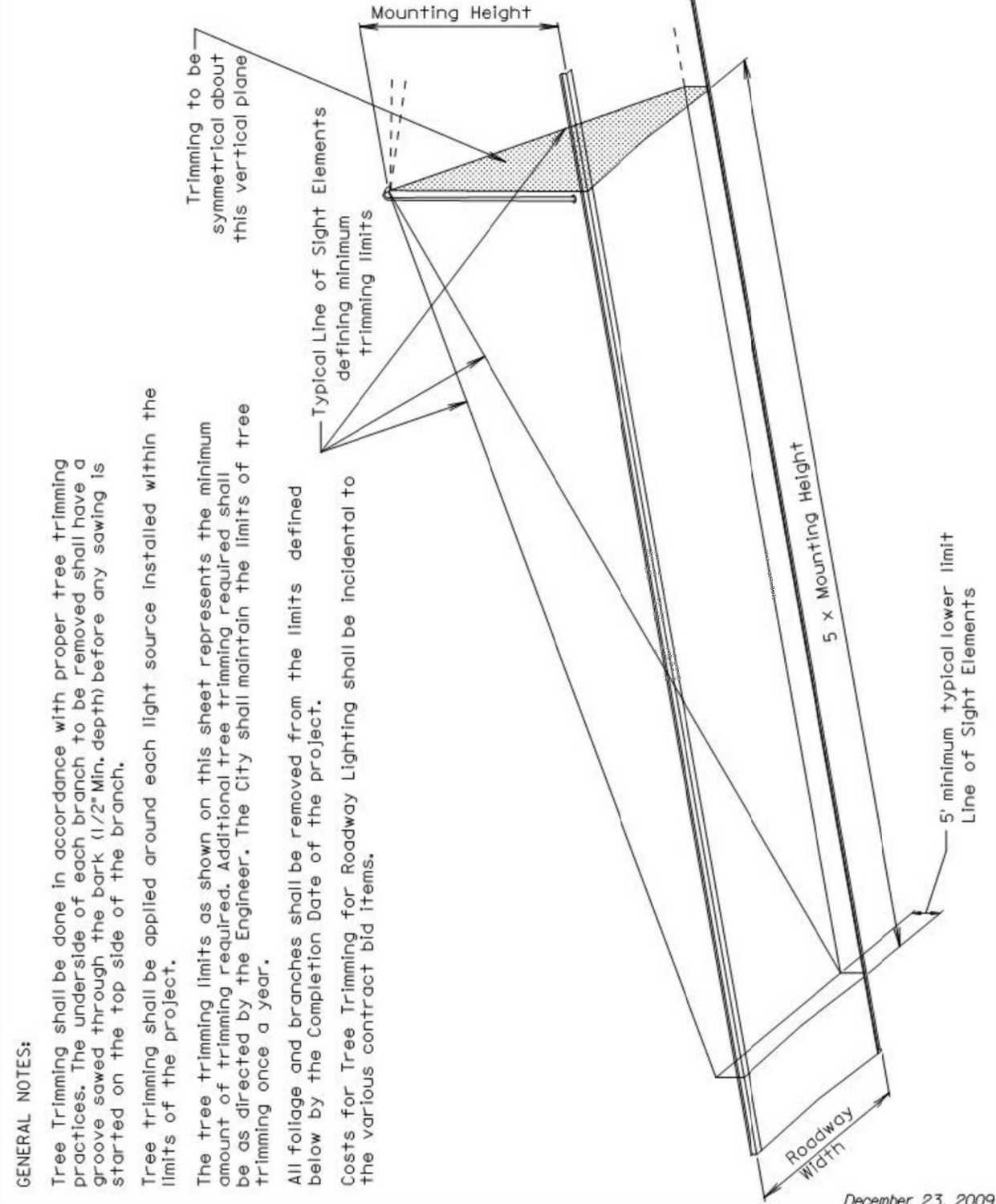


GENERAL NOTE:

The Buried Cable Marker shall be plastic, approximately 6" wide, and shall be capable of sustaining a minimum of a 350% tolerance of elongation without tearing. The Buried Cable Marker shall have a life expectancy approximately equal to that of the conductor(s) beneath it. A phrase indicating the presence of a buried electric circuit below shall be printed in a contrasting color on the cable marker. The Buried Cable Marker shall be subject to approval by the Engineer. All costs associated with furnishing and installing the Buried Cable Marker shall be incidental to the contract unit price per Foot for the bid item used for the electrical conductor.

March 31, 2000

Published Date: 3rd Qtr. 2021	S D D O T	CONDUIT INSTALLATION	PLATE NUMBER 635.76
			Sheet 1 of 1



GENERAL NOTES:

Tree Trimming shall be done in accordance with proper tree trimming practices. The underside of each branch to be removed shall have a groove sawed through the bark (1/2" Min. depth) before any sawing is started on the top side of the branch.

Tree trimming shall be applied around each light source installed within the limits of the project.

The tree trimming limits as shown on this sheet represents the minimum amount of trimming required. Additional tree trimming required shall be as directed by the Engineer. The City shall maintain the limits of tree trimming once a year.

All foliage and branches shall be removed from the limits defined below by the Completion Date of the project.

Costs for Tree Trimming for Roadway Lighting shall be incidental to the various contract bid items.

December 23, 2009

Published Date: 3rd Qtr. 2021	S D D O T	TREE TRIMMING FOR ROADWAY LIGHTING	PLATE NUMBER 635.99
			Sheet 1 of 1