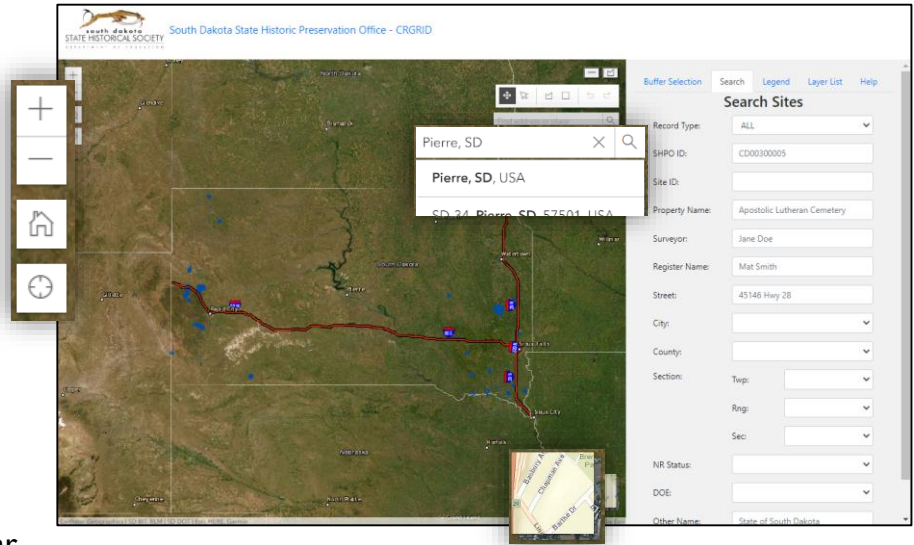


## The Basics

Zoom to a location by:

- Double-clicking a point on the map.
- Using the + / - buttons on the upper-left corner of the map window.
- Scrolling with the wheel on a computer mouse.
- Holding SHIFT and dragging a square around the desired area to zoom in.  
Hold SHIFT+CTRL and drag a square to zoom out.
- Typing a desired location in the “Find Address or Place” bar.  
You can search by address, town, township, county, etc.  
Search suggestions will also appear below as you type.



Pan across the map by clicking on and pulling the map.

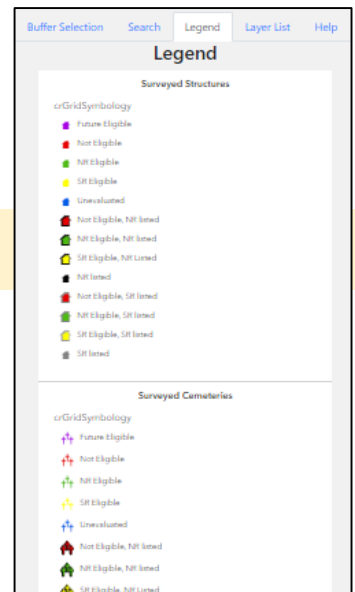
Change base maps between aerial imagery and a street map version by clicking the stack of icons in the lower-right corner of the map.

Return the map to the default statewide view or zoom the map to your current location with the Home and Location buttons in the upper-left corner of the map. **TIP:** To use “Find my Location,” your browser application must have tracking location capabilities turned on.

## Legend

Clicking on “LEGEND” shows the symbology for the Structure, Bridge, and Cemetery icons used for survey records, and for other layers on the map, including streets, historic district boundaries, and township section boundaries.

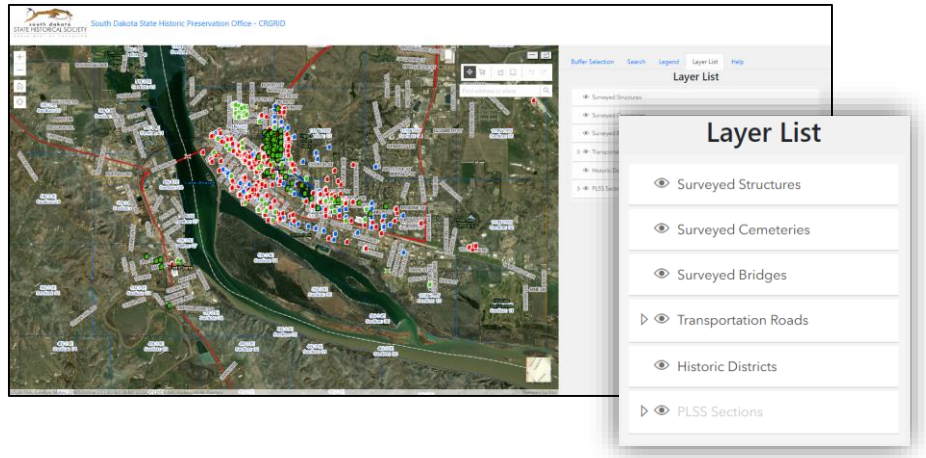
The records’ symbology indicates what has been entered in the record for the eligibility and/or listed status of the site for the National or State Register of Historic Places.



## Layer List

Clicking on “LAYER LIST” shows list of layers visible by default on the map. Road and Section layers are labeled on the map

To reduce the map’s visual busy-ness, you can click the eye icon next to the layer name to turn that layer off. Click the eye again to turn the layer back on.

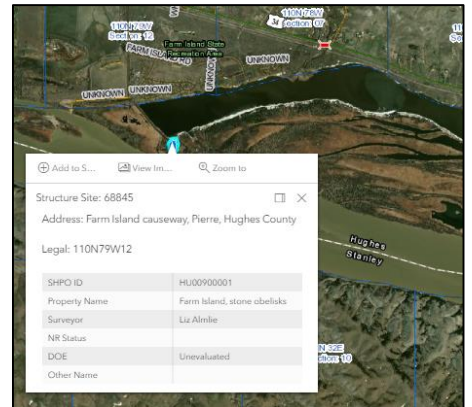




## Identify Feature

Clicking on the “IDENTIFY FEATURE” tab allows the user to click on a property icon and a pop-up will appear with a table of basic information from the record’s survey form. The table will not have an entry if the form doesn’t have info in that field.

You can minimize the pop-up by clicking on the Site number heading. You can close the pop-up by clicking on the X button or on any other part of the map.

If multiple records are at the point of clicking, they will all be pages in the pop-up. In the lower- or upper-right corner, you can click through the pages.



You can “dock” the pop-up to your screen, so it stays visible despite how you move the map, by clicking on . Click  to undock the pop-up.

You can add the records shown in the pop-up (single or multiple) to the list of Selected Surveyed Sites by clicking “Add to Selection.”



If the record has an image, clicking “View Image” will bring up the image in a new tab of your browser. (You must have pop-ups enabled for this website.) If there is no photo (yet) for that record, a “No Images Available” message will appear.



Clicking “Zoom to” zooms the map to the record location and centers it on the map. Each click zooms closer.



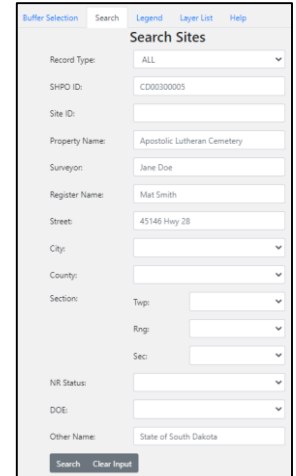
## Search Sites by Attributes

The “SEARCH” tab is the default side window in this application. You can search for survey records with any of the fields in the menu.

Select a specific Record Type at the top to bring up additional search fields that apply to that specific Structure, Bridge, or Cemetery record type. The additional search fields will show at the bottom of the list.

Click the “Search” button at the bottom to submit your query. A list of results will appear in a window at the bottom of the page and their icons on the map will be highlighted in blue. Each successful search query will cumulatively add records to the “Selected Surveyed Sites” list, until that list is cleared.

Click the “Clear Input” button at the bottom to clear all the search terms you have entered/selected.



**TIP 1:** Try searching a single keyword rather than trying to match the exact wording.

**TIP 2:** If no results are coming up for a keyword in the Property Name field, try the same search term in the Register Name and Other Name fields.

## Table of Selected Surveyed Sites

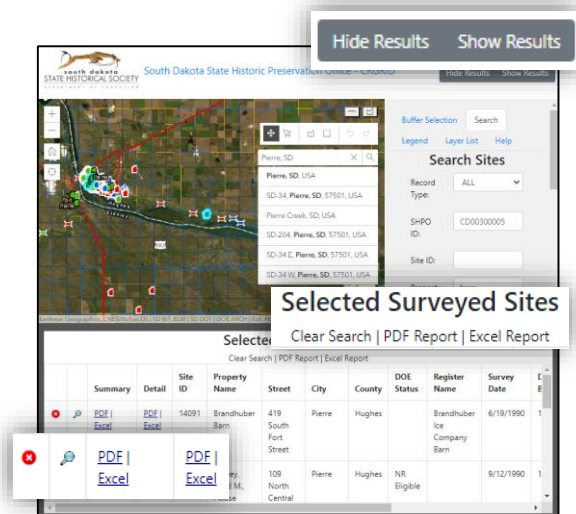
The table list of Selected Surveyed Sites displays the results added from the pop-up window(s), or from searches by attributes, buffer, or polygon. Vertical and horizontal scroll bars appear when needed to be able to view the entire table.

Click on “Hide Results” button to hide the Selected Surveyed Sites window and increase the viewable area of the map. Clicking “Show Results” brings the list back up on the screen.

Click on the red X to remove specific records from the list. Click on “Clear Search” to remove all the results from the list and close the window.

Click on the magnifying lens icon to zoom the map to that record.

Download summary report tables of all the records in PDF or Excel formats using the links in the table header. For each record, there are links to download Summary or Detail reports of the record in PDF or Excel formats.

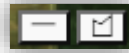


Selected Surveyed Sites

Summary	Detail	Site ID	Property Name	Street	City	County	DOE Status	Register Name	Survey Date
<a href="#">PDF</a>	<a href="#">Excel</a>	14091	Brandhuber Barn	419 South Fort Street	Pierre	Hughes	Status	Brandhuber Ice Company Barn	6/19/1990
<a href="#">PDF</a>	<a href="#">Excel</a>			109 North Central	Pierre	Hughes	NR Eligible		5/12/1990

## Measuring Tools

Measure distance and area by clicking on one of these line (distance) or polygon (area) tool buttons.



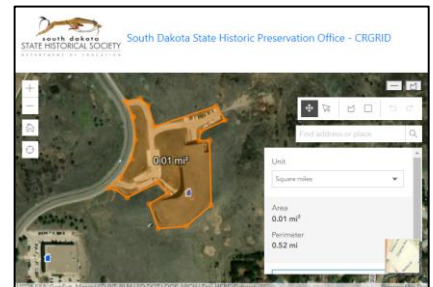
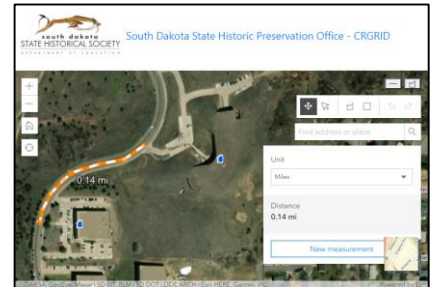
After clicking the desired tool, draw a line (or polygon) by clicking once on the map to start the measurement, clicking once at each phase of the line/polygon, and double-clicking on the final point to conclude the measurement.

Click the “New Measurement” button to start a new chain of clicks.

Click the tool button again to stop using the tool.

**TIP 1:** While you’re drawing your line/polygon, you can still move the map to change the viewable area. It will pause the drawing as you’re dragging.

**TIP 2:** After drawing the line/polygon, you can drag any of the points you made to adjust their locations.



## Identify Map Point

By clicking on the “IDENTIFY MAP POINT” tab, you can click any part of the map and a pop-up will appear with coordinates for that location in Web Mercator, Latitude/Longitude, and UTM versions.

**TIP:** If moving from the Map Point tab to use any of the line/polygon tools, click on the Search, Legend, etc. tabs so clicking the map doesn’t continue to bring up the coordinates.

## Select by Buffer

Click on “BUFFER SELECTION” in the side window to search for records within a certain distance around a single point.

In the Buffer menu, you can set the desired value and units of measurement for the distance. You can also narrow the search by record type. Selected records will be highlighted in blue and added to the results list.

The Buffer search will cumulatively add results to the Selected Surveyed Sites list for each point clicked on the map. Click on Clear Search in the header of the results list to remove previous query results.

**TIP:** If moving from the Buffer search to use any of the line/polygon tools to measure or query, click off the Buffer menu to Search, Legend, etc. so the Buffer tool doesn’t continue to add results to the list.



## Select by Polygon/Rectangle

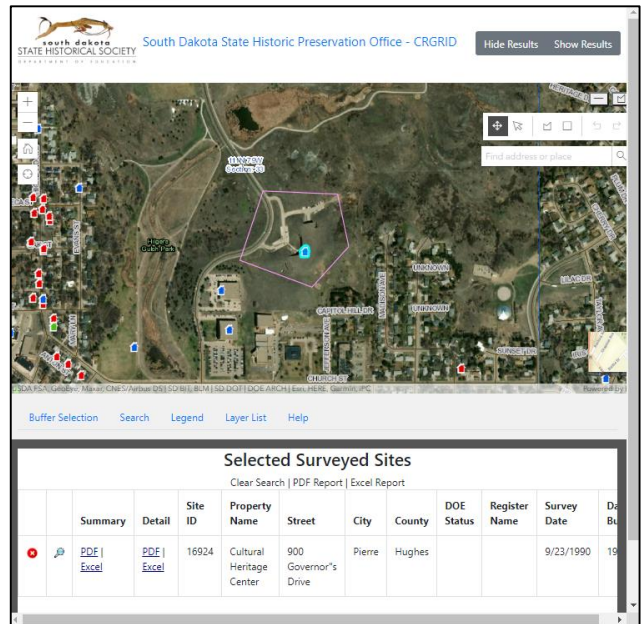
You can use the Draw a Polygon or Draw a Rectangle buttons to search for records within a custom-defined geographic area.

To draw the polygon, click on the starting point, then click on each boundary point to define the extent of the polygon and double-click on the last point to conclude the drawing. Record icons within that polygon will be highlighted in blue on the map and the details for the record added to the Selected Surveyed Sites list. The drawn polygon will be outlined in pink.

**TIP:** You can click & drag your cursor to add multiple points and define a very irregular line for the polygon. While using this tool, you cannot pan the map.

To draw the rectangle, click & drag your cursor from one corner of the desired area to the opposite corner. The drawn rectangle will be outlined in pink.

To select another polygon/rectangle, you must click the desired tool button again. Only the most recently-drawn outline will appear as pink. Results will be cumulatively added to the “Selected Surveyed Sites” list. Click on “Clear Search” in the header of the results list to remove previous query results from the list.

South Dakota State Historic Preservation Office - CRGRID

Hide Results Show Results

Selected Surveyed Sites

Clear Search | PDF Report | Excel Report

	Summary	Detail	Site ID	Property Name	Street	City	County	DOE Status	Register Name	Survey Date	De Bu
	<a href="#">PDF</a>	<a href="#">PDF</a>	16924	Cultural Heritage Center	900 Governor's Drive	Pierre	Hughes			9/23/1990	19