

Creel and Lake Information

Lake Information

Lake Name: Sharpe
Lake Code: FTR-Lake-6327-001
Surface Area: 23,738.91 Hectares
County: Hughes
Start Date: 5/3/2019
End Date: 8/29/2019
Months Included: May, June, July, August

Table 1. Percent of angling parties interviewed primarily targeting a species (or any species) by month and overall for Sharpe during 2018 - 2019. Any Species (ANY), Black Crappie (BLC), Channel Catfish (CCF), Common Carp (COC), Fall Chinook Salmon (FCS), Rainbow Trout (RBT), Smallmouth Bass (SMB), Smallmouth Buffalo (SAB), Walleye (WAE), White Bass (WHB).

Year	Month	# of Interviews	Percent of Anglers Targeting									
			ANY	BLC	CCF	COC	FCS	RBT	SMB	SAB	WAE	WHB
2018	May	216	13.0	1.9	1.9	0.0	0.0	0.5	9.3	0.0	70.4	2.8
	June	179	16.8	1.1	3.4	0.0	0.0	0.0	6.1	0.0	72.6	0.0
	July	165	12.7	0.0	4.8	0.0	0.0	0.0	1.2	0.0	81.2	0.0
	August	158	15.8	0.0	9.5	0.0	0.0	0.0	2.5	0.0	71.5	0.6
	Overall	718	14.5	0.8	4.6	0.0	0.0	0.1	5.2	0.0	73.7	1.0
2019	May	158	17.7	0.6	5.1	0.6	0.0	0.6	5.1	0.6	65.2	4.4
	June	234	10.3	0.0	0.0	0.0	0.0	0.0	0.9	0.0	85.0	3.8
	July	245	4.1	0.0	0.0	0.0	0.0	0.0	0.8	0.0	95.1	0.0
	August	62	4.8	0.0	0.0	0.0	1.6	0.0	3.2	0.0	90.3	0.0
	Overall	699	9.3	0.1	1.1	0.1	0.1	0.1	2.0	0.1	84.5	2.3

Table 2. Monthly and overall number of interviews, angler hours, angler days, mean trip length, mean party size, percent of parties interviewed that were South Dakota residents, percent of angling activity from a boat or shack and percent of angling activity that occurred on weekends and holidays at Sharpe (80% confidence interval).

Year	Month	# Interviews	Angler Hours	Angler Days	Trip Length (h)	Party Size	% SD Residents	% Boat or Shack	% Weekend/Holidays
2018	May	216	97,445 (8,394)	21,046	4.63 (1.65)	2.31 (0.64)	68.52	64	54
	June	179	108,345 (5,060)	20,289	5.34 (1.49)	2.55 (0.85)	73.18	69	50
	July	165	97,898 (5,695)	22,250	4.40 (0.93)	2.46 (0.48)	76.36	81	58
	August	158	69,748 (3,363)	15,000	4.65 (1.05)	2.28 (0.42)	75.32	68	51
	Overall	718	373,435 (11,824)	78,618	4.75 (0.66)	2.40 (0.31)	72.98	70	53
2019	May	158	32,164 (4,501)	7,480	4.30 (0.91)	2.10 (0.51)	79.75	63	63
	June	234	50,686 (3,070)	10,626	4.77	2.49 (0.34)	69.66	98	49
	July	245	44,541 (3,442)	10,123	4.40 (0.75)	2.70 (0.53)	75.10	95	55
	August	62	30,660 (2,270)	6,537	4.69	2.71	70.97	100	63
	Overall	699	158,052 (6,832)	34,813	4.54 (0.30)	2.50 (0.20)	73.96	89	56

Table 3. Estimated fishing pressure (angler hours) by month during the summer season 2019 daylight period on Sharpe (80% confidence interval).

Lake	Month				Total
	May	June	July	August	
Sharpe (Hughes)	32,164 (4,501)	50,686 (3,070)	44,541 (3,442)	30,660 (2,270)	158,052 (6,832)

Table 4. Estimated number of fish harvested, by species and month, for the summer season 2019 daylight period on Sharpe (80% confidence interval).

Species	Month				Total
	May	June	July	August	
Black Crappie	0	125 (110)	74 (58)	26	226 (124)
Channel Catfish	0	91 (69)	71 (39)	193 (121)	355 (144)
Common Carp	0	0	0	0	0
Fall Chinook Salmon	0	20 (26)	0	78 (112)	98 (115)
Rainbow Trout	0	0	0	0	0
Smallmouth Bass	2,321 (1,301)	1,482 (669)	1,577 (409)	1,068 (326)	6,447 (1,554)
Smallmouth Buffalo	0	20 (26)	0	0	20 (26)
Walleye	10,068 (1,806)	18,470 (2,559)	30,883 (3,455)	15,743 (1,972)	75,164 (5,063)
White Bass	0	3,257 (2,596)	138 (90)	0	3,395 (2,598)
Total	12,389 (3,107)	23,464 (6,055)	32,743 (4,051)	17,109 (2,531)	85,704 (9,625)

Table 5a. Estimated monthly and overall angler catch rate per hour fished (C/h) for all anglers by species at Sharpe (80% confidence interval). Abbreviations for species are as follows: Black Crappie (BLC), Channel Catfish (CCF), Common Carp (COC), Fall Chinook Salmon (FCS), Rainbow Trout (RBT), Smallmouth Bass (SMB), Smallmouth Buffalo (SAB), Walleye (WAE), White Bass (WHB) and other species (Other).

Year	Month	BLC	CCF	COC	FCS	RBT	SMB	SAB	WAE	WHB
		C/h	C/h	C/h	C/h	C/h	C/h	C/h	C/h	C/h
2018	May	<0.01 (<0.01)	<0.01 (<0.01)	<0.01 (<0.01)	0.00	0.00	0.40 (0.23)	<0.01 (<0.01)	1.32 (0.49)	0.01 (0.01)
	June	<0.01	0.04 (0.02)	<0.01 (<0.01)	0.00	0.00	0.18 (0.07)	0.00	1.39 (0.40)	0.02 (<0.01)
	July	0.00	0.05 (0.01)	<0.01	0.00	0.00	0.05 (0.02)	0.00	0.92 (0.20)	0.01 (<0.01)
	August	<0.01 (<0.01)	0.08 (0.05)	<0.01 (<0.01)	0.00	<0.01	0.12 (0.05)	0.00	0.89 (0.17)	0.01 (<0.01)
	Overall	<0.01 (<0.01)	0.04 (0.01)	<0.01	0.00	<0.01	0.19 (0.05)	<0.01 (<0.01)	1.15 (0.18)	0.01 (<0.01)
2019	May	0.00	<0.01 (<0.01)	<0.01 (<0.01)	0.00	<0.01 (<0.01)	0.27 (0.15)	0.00	0.81 (0.38)	0.01 (<0.01)
	June	<0.01 (<0.01)	0.01 (<0.01)	<0.01 (<0.01)	<0.01 (<0.01)	<0.01 (<0.01)	0.12 (0.05)	<0.01 (<0.01)	1.44 (0.35)	0.10 (0.07)
	July	<0.01 (<0.01)	0.01	<0.01 (<0.01)	0.00	0.00	0.09 (0.03)	0.00	1.71 (0.44)	0.01 (<0.01)
	August	<0.01	0.02 (<0.01)	<0.01 (<0.01)	<0.01 (<0.01)	0.00	0.09 (0.03)	0.00	0.88 (0.17)	0.03 (0.02)
	Overall	<0.01 (<0.01)	0.01 (<0.01)	<0.01 (<0.01)	<0.01 (<0.01)	<0.01 (<0.01)	0.14 (0.03)	<0.01 (<0.01)	1.28 (0.19)	0.04 (0.02)

Table 5b. Estimated monthly and overall angler harvest rate per hour fished (H/h) for all anglers by species at Sharpe (80% confidence interval). Abbreviations for species are as follows: Black Crappie (BLC), Channel Catfish (CCF), Common Carp (COC), Fall Chinook Salmon (FCS), Rainbow Trout (RBT), Smallmouth Bass (SMB), Smallmouth Buffalo (SAB), Walleye (WAE), White Bass (WHB) and other species (Other).

Year	Month	BLC	CCF	COC	FCS	RBT	SMB	SAB	WAE	WHB
		H/h	H/h	H/h	H/h	H/h	H/h	H/h	H/h	H/h
2018	May	<0.01 (<0.01)	<0.01 (<0.01)	0.00	0.00	0.00	0.09 (0.04)	0.00	0.35 (0.10)	<0.01 (<0.01)
	June	<0.01	<0.01 (<0.01)	0.00	0.00	0.00	0.04 (0.02)	0.00	0.26 (0.07)	0.01 (<0.01)
	July	0.00	0.02 (<0.01)	<0.01 (<0.01)	0.00	0.00	0.01 (<0.01)	0.00	0.51 (0.08)	<0.01 (<0.01)
	August	<0.01 (<0.01)	0.01 (<0.01)	0.00	0.00	0.00	0.03 (0.01)	0.00	0.51 (0.11)	<0.01 (<0.01)
	Overall	<0.01 (<0.01)	0.01 (<0.01)	<0.01 (<0.01)	0.00	0.00	0.04 (0.01)	0.00	0.40 (0.05)	<0.01 (<0.01)
2019	May	0.00	0.00	0.00	0.00	0.00	0.07 (0.05)	0.00	0.31 (0.13)	0.00
	June	<0.01 (<0.01)	<0.01 (<0.01)	0.00	<0.01 (<0.01)	0.00	0.03 (0.01)	<0.01 (<0.01)	0.36 (0.07)	0.06 (0.05)
	July	<0.01 (<0.01)	<0.01 (<0.01)	0.00	0.00	0.00	0.04 (0.01)	0.00	0.69 (0.17)	<0.01 (<0.01)
	August	<0.01	0.01 (<0.01)	0.00	<0.01 (<0.01)	0.00	0.03 (0.01)	0.00	0.51 (0.07)	0.00
	Overall	<0.01 (<0.01)	<0.01 (<0.01)	0.00	<0.01 (<0.01)	0.00	0.04 (0.01)	<0.01 (<0.01)	0.48 (0.06)	0.02 (0.02)

Table 6a. Estimated monthly and overall angler catch rate per hour fished (C/h) only for anglers primarily targeting a species at Sharpe. (80% confidence interval). Abbreviations for species are as follows: Black Crappie (BLC), Channel Catfish (CCF), Common Carp (COC), Fall Chinook Salmon (FCS), Rainbow Trout (RBT), Smallmouth Bass (SMB), Smallmouth Buffalo (SAB), Walleye (WAE), White Bass (WHB) and Other Species (Other).

Year	Month	BLC	CCF	COC	FCS	RBT	SMB	SAB	WAE	WHB
		C/h	C/h	C/h	C/h	C/h	C/h	C/h	C/h	C/h
2018	May	0.20 (<0.01)	0.00	0.00	0.00	0.00	1.04 (2.25)	0.00	1.29 (0.37)	1.75 (8.34)
	June	0.00	0.37 (0.21)	0.00	0.00	0.00	0.48 (0.71)	0.00	1.25 (0.39)	0.00
	July	0.00	0.09 (0.10)	0.00	0.00	0.00	0.39	0.00	0.90 (0.47)	0.00
	August	0.00	0.44 (0.62)	0.00	0.00	0.00	1.65 (0.53)	0.00	0.90 (0.24)	0.00
	Overall	0.10 (<0.01)	0.24 (0.19)	0.00	0.00	0.00	0.94 (0.66)	0.00	1.11 (0.18)	1.39 (6.63)
2019	May	0.21	0.80 (1.55)	0.00	0.00	0.00	1.94 (0.55)	0.00	0.77 (0.21)	1.08 (1.10)
	June	0.00	0.00	0.00	0.00	0.00	0.31	0.00	1.56 (1.31)	1.90 (1.93)
	July	0.00	0.00	0.00	0.00	0.00	2.19	0.00	1.80 (0.74)	0.00
	August	0.00	0.00	0.00	0.20	0.00	0.74	0.00	0.91 (0.70)	0.00
	Overall	0.21	0.80 (1.55)	0.00	0.20	0.00	1.35 (0.19)	0.00	1.17 (0.30)	1.48 (1.10)

Table 6b. Estimated monthly and overall angler harvest rate per hour fished (H/h) only for anglers primarily targeting a species at Sharpe. (80% confidence interval). Abbreviations for species are as follows: Black Crappie (BLC), Channel Catfish (CCF), Common Carp (COC), Fall Chinook Salmon (FCS), Rainbow Trout (RBT), Smallmouth Bass (SMB), Smallmouth Buffalo (SAB), Walleye (WAE), White Bass (WHB) and Other Species (Other).

Year	Month	BLC	CCF	COC	FCS	RBT	SMB	SAB	WAE	WHB
		H/h	H/h	H/h	H/h	H/h	H/h	H/h	H/h	H/h
2018	May	0.20 (0.18)	0.00	0.00	0.00	0.00	0.16 (0.22)	0.00	0.34 (0.07)	0.09 (0.05)
	June	0.00	0.33 (0.67)	0.00	0.00	0.00	0.10 (0.21)	0.00	0.24 (0.09)	0.00
	July	0.00	0.06 (0.02)	0.00	0.00	0.00	0.00	0.00	0.48 (0.27)	0.00
	August	0.00	0.25 (0.18)	0.00	0.00	0.00	0.09 (0.22)	0.00	0.52 (0.17)	0.00
	Overall	0.10 (0.09)	0.16 (0.16)	0.00	0.00	0.00	0.10 (0.10)	0.00	0.38 (0.07)	0.07 (0.04)
2019	May	0.21	0.80 (1.44)	0.00	0.00	0.00	0.23	0.00	0.30 (0.10)	0.82 (1.37)
	June	0.00	0.00	0.00	0.00	0.00	0.00	0.00	0.40 (0.32)	1.27 (1.41)
	July	0.00	0.00	0.00	0.00	0.00	0.00	0.00	0.72 (0.27)	0.00
	August	0.00	0.00	0.00	0.20	0.00	0.37	0.00	0.55 (0.35)	0.00
	Overall	0.21	0.80 (1.44)	0.00	0.20	0.00	0.11	0.00	0.46 (0.11)	1.04 (0.98)

Table 7a. Estimated monthly and overall angler catch (C) for all anglers by species at Sharpe (80% confidence interval). Abbreviations for species are as follows: Black Crappie (BLC), Channel Catfish (CCF), Common Carp (COC), Fall Chinook Salmon (FCS), Rainbow Trout (RBT), Smallmouth Bass (SMB), Smallmouth Buffalo (SAB), Walleye (WAE), White Bass (WHB) and other species (Other).

Year	Month	BLC	CCF	COC	FCS	RBT	SMB	SAB	WAE	WHB
		C	C	C	C	C	C	C	C	C
2018	May	7 (7)	353 (208)	169 (101)	0	0	38,858 (14,138)	67 (83)	128,809 (40,234)	1,182 (686)
	June	342 (183)	3,861 (2,209)	92 (55)	0	0	19,024 (8,801)	0	150,538 (34,886)	2,534 (1,211)
	July	0	5,173 (1,655)	321 (192)	0	0	5,275 (1,646)	0	89,920 (13,703)	721 (279)
	August	61 (65)	5,710 (3,329)	348 (171)	0	<1	8,099 (3,022)	0	61,829 (8,020)	861 (384)
	Overall	410 (194)	15,097 (4,329)	930 (282)	0	<1	71,256 (17,005)	67 (83)	431,096 (55,569)	5,298 (1,470)
2019	May	0	21 (26)	63 (78)	0	42 (34)	8,564 (3,967)	0	26,103 (5,461)	264 (136)
	June	204 (210)	529 (295)	87 (52)	99 (103)	20 (27)	6,244 (2,641)	20 (26)	72,887 (14,634)	4,931 (3,273)
	July	74 (58)	406 (179)	63 (54)	0	0	4,017 (1,083)	0	76,280 (11,030)	307 (108)
	August	52	600 (265)	26 (37)	78 (112)	0	2,804 (980)	0	26,834 (5,178)	916 (694)
	Overall	330 (218)	1,556 (436)	238 (114)	177 (153)	62 (43)	21,630 (4,984)	20 (26)	202,104 (19,811)	6,419 (3,350)

Table 7b. Estimated monthly and overall angler harvest (H) for all anglers by species at Sharpe (80% confidence interval). Abbreviations for species are as follows: Black Crappie (BLC), Channel Catfish (CCF), Common Carp (COC), Fall Chinook Salmon (FCS), Rainbow Trout (RBT), Smallmouth Bass (SMB), Smallmouth Buffalo (SAB), Walleye (WAE), White Bass (WHB) and other species (Other).

Year	Month	BLC	CCF	COC	FCS	RBT	SMB	SAB	WAE	WHB
		H	H	H	H	H	H	H	H	H
2018	May	6 (5)	103 (101)	0	0	0	8,780 (3,167)	0	34,297 (4,729)	156 (120)
	June	296 (162)	447 (380)	0	0	0	4,177 (2,207)	0	28,107 (6,124)	639 (681)
	July	0	2,188 (959)	46 (52)	0	0	941 (423)	0	49,643 (5,471)	407 (222)
	August	61 (65)	433 (367)	0	0	0	2,266 (805)	0	35,822 (5,290)	166 (155)
	Overall	363 (175)	3,172 (1,099)	46 (52)	0	0	16,164 (3,966)	0	147,870 (10,853)	1,369 (742)
2019	May	0	0	0	0	0	2,321 (1,301)	0	10,068 (1,806)	0
	June	125 (110)	91 (69)	0	20 (26)	0	1,482 (669)	20 (26)	18,470 (2,559)	3,257 (2,596)
	July	74 (58)	71 (39)	0	0	0	1,577 (409)	0	30,883 (3,455)	138 (90)
	August	26	193 (121)	0	78 (112)	0	1,068 (326)	0	15,743 (1,972)	0
	Overall	226 (124)	355 (144)	0	98 (115)	0	6,447 (1,554)	20 (26)	75,164 (5,063)	3,395 (2,598)

Table 8. Estimated number and rate (number per hour) of Black Crappie (BLC), Channel Catfish (CCF), Common Carp (COC), Fall Chinook Salmon (FCS), Rainbow Trout (RBT), Smallmouth Bass (SMB), Smallmouth Buffalo (SAB), Walleye (WAE), White Bass (WHB) caught and harvested by anglers during the summer and winter fisheries on Sharpe, (80% confidence interval).

Black Crappie

Season	Year	Catch	Harvest	Catch Rate	Harvest Rate
Summer	2010	405 (269)	240 (228)	<0.01 (<0.01)	<0.01 (<0.01)
Summer	2018	410 (194)	363 (175)	<0.01 (<0.01)	<0.01 (<0.01)
Summer	2019	330 (218)	226 (124)	<0.01 (<0.01)	<0.01 (<0.01)

Channel Catfish

Season	Year	Catch	Harvest	Catch Rate	Harvest Rate
Summer	2010	10,866 (2,501)	6,384 (1,565)	0.03 (<0.01)	0.02 (<0.01)
Summer	2011	3,434 (878)	1,964 (657)	0.02 (<0.01)	0.01 (<0.01)
Summer	2012	7,086 (2,014)	2,130 (907)	0.02 (<0.01)	0.01 (<0.01)
Summer	2013	13,610 (3,509)	4,954 (2,428)	0.03 (0.01)	0.01 (<0.01)
Summer	2014	5,740 (1,468)	2,433 (1,004)	0.02 (<0.01)	0.01 (<0.01)
Summer	2015	14,051 (2,665)	4,591 (1,704)	0.04 (<0.01)	0.01 (<0.01)
Summer	2017	11,259 (1,870)	3,095 (658)	0.03 (<0.01)	0.01 (<0.01)
Summer	2018	15,097 (4,329)	3,172 (1,099)	0.04 (0.01)	0.01 (<0.01)
Summer	2019	1,556 (436)	355 (144)	0.01 (<0.01)	<0.01 (<0.01)

Common Carp

Season	Year	Catch	Harvest	Catch Rate	Harvest Rate
Summer	2010	4,404 (1,889)	204 (273)	0.01 (<0.01)	<0.01 (<0.01)
Summer	2011	686 (194)	34 (42)	<0.01 (<0.01)	<0.01 (<0.01)
Summer	2012	1,410 (593)	216 (220)	<0.01 (<0.01)	<0.01 (<0.01)
Summer	2013	2,204 (614)	0	0.01 (<0.01)	0.00
Summer	2014	1,929 (749)	77 (72)	0.01 (<0.01)	<0.01 (<0.01)
Summer	2015	1,993 (526)	0	0.01 (<0.01)	0.00
Summer	2017	1,455 (398)	85 (83)	<0.01 (<0.01)	<0.01 (<0.01)
Summer	2018	930 (282)	46 (52)	<0.01	<0.01 (<0.01)
Summer	2019	238 (114)	0	<0.01 (<0.01)	0.00

Fall Chinook Salmon

Season	Year	Catch	Harvest	Catch Rate	Harvest Rate
Summer	2019	177 (153)	98 (115)	<0.01 (<0.01)	<0.01 (<0.01)

Rainbow Trout

Season	Year	Catch	Harvest	Catch Rate	Harvest Rate
Summer	2010	1,028 (625)	655 (465)	<0.01 (<0.01)	<0.01 (<0.01)
Summer	2011	196 (278)	22 (34)	<0.01 (<0.01)	<0.01 (<0.01)
Summer	2012	2,001 (1,035)	480 (231)	0.01 (<0.01)	<0.01 (<0.01)
Summer	2013	2,610 (1,240)	1,659 (770)	0.01 (<0.01)	<0.01 (<0.01)
Summer	2014	603 (308)	221 (141)	<0.01 (<0.01)	<0.01 (<0.01)
Summer	2015	368 (134)	211 (121)	<0.01 (<0.01)	<0.01 (<0.01)
Summer	2017	440 (168)	46 (40)	<0.01 (<0.01)	<0.01 (<0.01)
Summer	2018	<1	0	<0.01	0.00
Summer	2019	62 (43)	0	<0.01 (<0.01)	0.00

Smallmouth Bass

Season	Year	Catch	Harvest	Catch Rate	Harvest Rate
Summer	2010	91,882 (16,211)	7,128 (1,429)	0.24 (0.06)	0.02 (<0.01)
Summer	2011	41,405 (9,884)	4,321 (1,152)	0.24 (0.08)	0.03 (0.01)
Summer	2012	68,295 (8,643)	16,174 (3,580)	0.21 (0.04)	0.05 (0.01)
Summer	2013	54,653 (8,844)	19,590 (5,287)	0.14 (0.04)	0.05 (0.02)
Summer	2014	54,872 (12,413)	10,964 (3,060)	0.20 (0.06)	0.04 (0.01)
Summer	2015	63,109 (13,200)	17,190 (5,203)	0.20 (0.06)	0.05 (0.02)
Summer	2017	62,452 (23,101)	13,324 (4,173)	0.18 (0.09)	0.04 (0.02)
Summer	2018	71,256 (17,005)	16,164 (3,966)	0.19 (0.05)	0.04 (0.01)
Summer	2019	21,630 (4,984)	6,447 (1,554)	0.14 (0.03)	0.04 (0.01)

Smallmouth Buffalo

Season	Year	Catch	Harvest	Catch Rate	Harvest Rate
Summer	2010	49 (54)	0	<0.01 (<0.01)	0.00
Summer	2011	67 (34)	0	<0.01 (<0.01)	0.00
Summer	2012	21 (26)	0	<0.01 (<0.01)	0.00
Summer	2013	104 (119)	0	<0.01 (<0.01)	0.00
Summer	2018	67 (83)	0	<0.01 (<0.01)	0.00
Summer	2019	20 (26)	20 (26)	<0.01 (<0.01)	<0.01 (<0.01)

Walleye

Season	Year	Catch	Harvest	Catch Rate	Harvest Rate
Summer	2010	274,293 (33,284)	136,807 (14,753)	0.71 (0.16)	0.35 (0.07)
Summer	2011	178,666 (28,179)	72,622 (10,304)	1.05 (0.29)	0.43 (0.11)
Summer	2012	539,817 (65,397)	173,049 (19,657)	1.66 (0.31)	0.53 (0.10)
Summer	2013	405,715 (50,112)	232,065 (24,154)	1.02 (0.25)	0.58 (0.12)
Summer	2014	295,844 (40,534)	117,643 (19,504)	1.08 (0.28)	0.43 (0.12)
Summer	2015	305,774 (38,249)	116,826 (15,481)	0.97 (0.20)	0.37 (0.08)
Summer	2017	444,118 (71,664)	142,370 (20,653)	1.31 (0.33)	0.42 (0.10)
Summer	2018	431,096 (55,569)	147,870 (10,853)	1.15 (0.18)	0.40 (0.05)
Summer	2019	202,104 (19,811)	75,164 (5,063)	1.28 (0.19)	0.48 (0.06)

White Bass

Season	Year	Catch	Harvest	Catch Rate	Harvest Rate
Summer	2010	37,324 (12,073)	9,779 (4,231)	0.10 (0.04)	0.03 (0.01)
Summer	2011	9,367 (3,717)	3,408 (1,596)	0.05 (0.02)	0.02 (<0.01)
Summer	2012	15,219 (7,183)	2,764 (1,283)	0.05 (0.02)	0.01 (<0.01)
Summer	2013	14,311	2,797 (907)	0.04	0.01 (<0.01)
Summer	2014	17,815 (4,048)	4,682 (1,810)	0.07 (0.02)	0.02 (<0.01)
Summer	2015	34,232	9,389	0.11	0.03
Summer	2017	13,941 (2,939)	3,316 (1,045)	0.04 (0.01)	0.01 (<0.01)
Summer	2018	5,298 (1,470)	1,369 (742)	0.01 (<0.01)	<0.01 (<0.01)
Summer	2019	6,419 (3,350)	3,395 (2,598)	0.04 (0.02)	0.02 (0.02)

Table 9. The number of fish harvested with each species by length group (mm) for the winter and summer fisheries at Sharpe. Abbreviations for species are as follows: Black Crappie (BLC), Channel Catfish (CCF), Common Carp (COC), Fall Chinook Salmon (FCS), Rainbow Trout (RBT), Smallmouth Bass (SMB), Smallmouth Buffalo (SAB), Walleye (WAE), White Bass (WHB).

Summer 2018									
Length Group (mm)	BLC (N=0)	CCF (N=0)	COC (N=0)	FCS (N=0)	RBT (N=0)	SMB (N=279)	SAB (N=0)	WAE (N=2077)	WHB (N=4)
30								1	
40									
50									
60									
70									
80									
90									
100									
110									
120									
130									
140									
150									
160									
170									
180									
190									
200									
210									
220						1			
230									
240						1			
250						2			
260									
270						3			
280						7		1	
290						1		3	
300						18		10	
310						13		23	
320						19		24	
330						14		35	
340						13		98	
350						16		132	
360						16		185	1
370						12		227	
380						16		400	1
390						13		322	1
400						21		212	
410						25		132	
420						23		80	1
430						11		66	
440						12		40	
450						5		29	
460						6		17	
470						6		12	
480						3		10	
490						2		7	
500								1	
510								1	
520								3	
530								1	
540									
550								1	
560								1	
570								1	
580								1	
590									
600									
610									
620									
630									
640									
650									
660									
670									
680								1	

Summer 2019

Length Group (mm)	BLC (N=2)	CCF (N=0)	COC (N=0)	FCS (N=0)	RBT (N=0)	SMB (N=0)	SAB (N=0)	WAE (N=2720)	WHB (N=0)
30								3	
40								1	
50									
60									
70									
80									
90									
100									
110									
120									
130									
140									
150									
160									
170									
180									
190									
200									
210									
220									
230									
240									
250									
260									
270									
280								3	
290									
300								8	
310								11	
320								11	
330								32	
340								61	
350	1							114	
360								243	
370								322	
380								574	
390	1							443	
400								322	
410								220	
420								138	
430								93	
440								40	
450								22	
460								16	
470								11	
480								11	
490								6	
500								3	
510								3	
520								4	
530									
540								1	
550									
560								1	
570									
580								1	
590									
600									
610									
620								1	
630									
640									
650									
660									
670									
680									
690									
700									
710									
720									
730									

740
750
760
770

1

Figure 1a. Length frequency of angler-harvested Smallmouth Bass measured by the creel clerk during creel surveys on Sharpe.

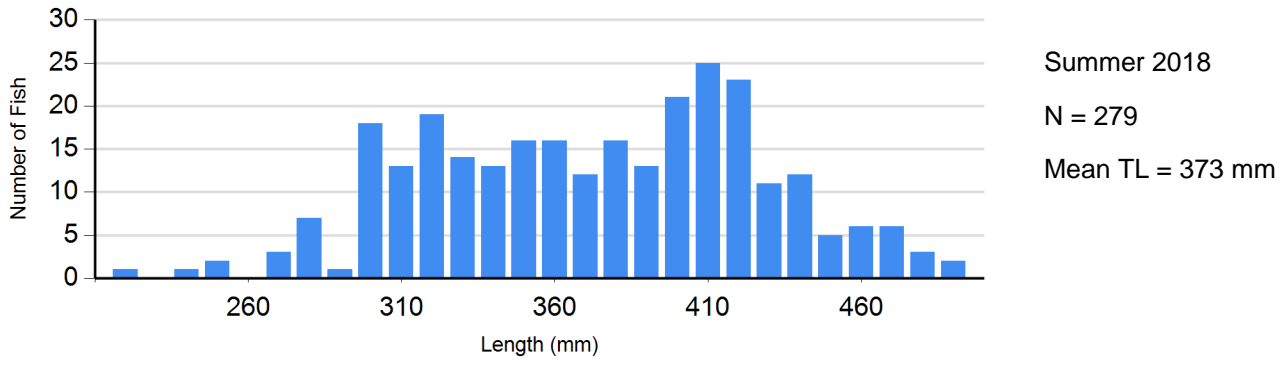


Figure 1b. Length frequency of angler-harvested Walleye measured by the creel clerk during creel surveys on Sharpe.

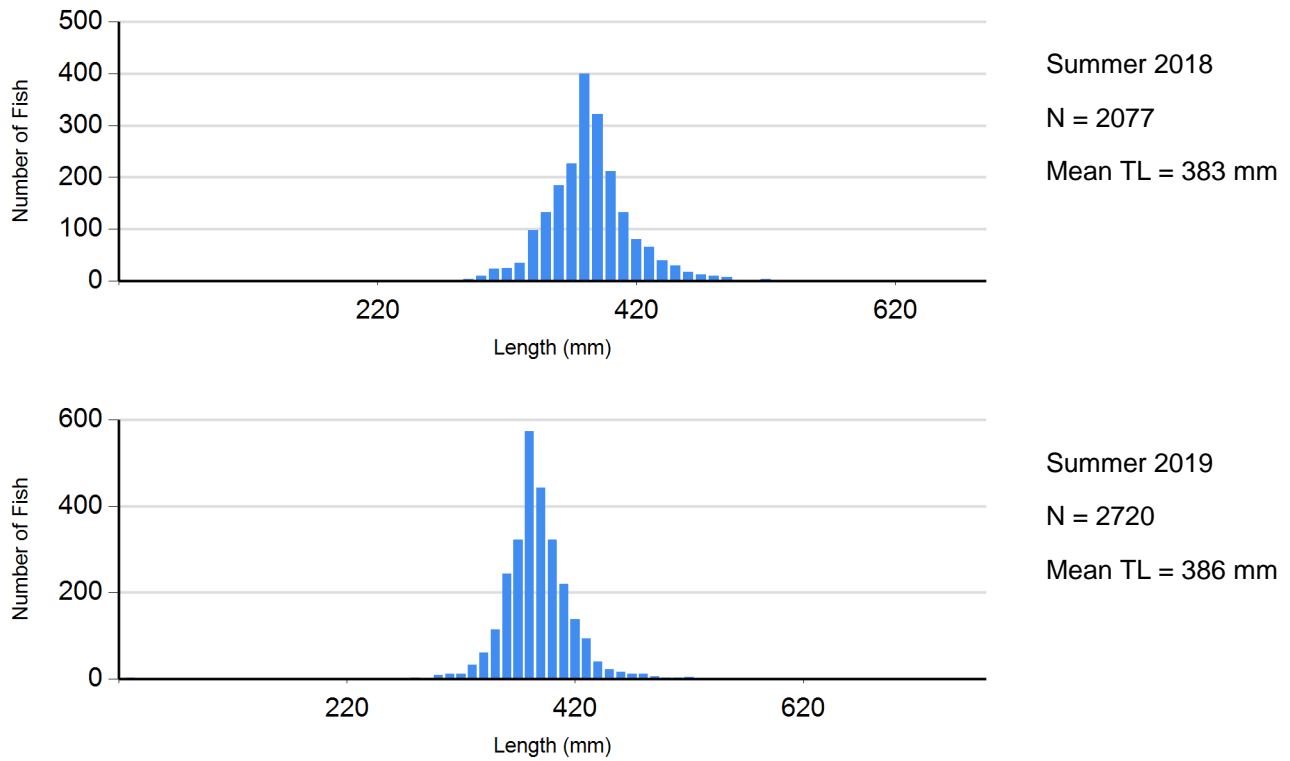


Figure 2. South Dakota county of residence for winter and summer resident anglers fishing Sharpe, South Dakota between May 2018 and August 2019.

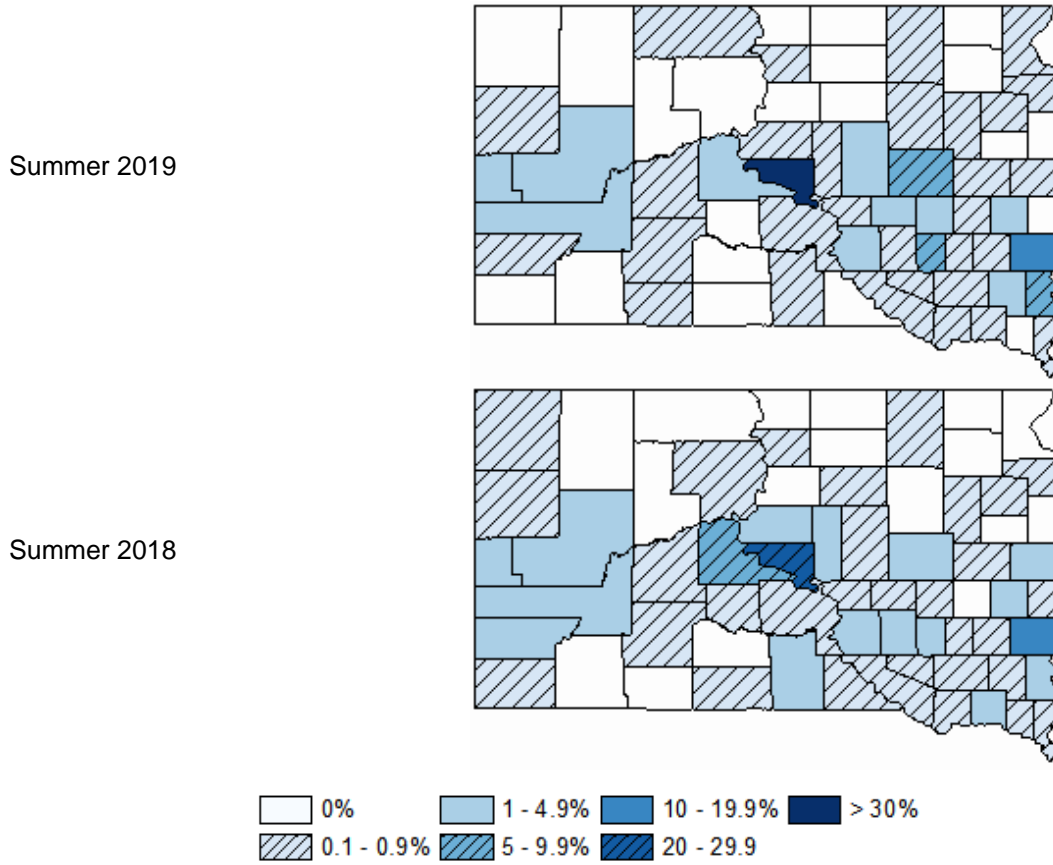


Table 10. Number of parties interviewed that harvested (or caught) a specified number of fish totaled over selected strata for a species.

Angler Harvest	Counts								
	BLC (n=718)	CCF (n=719)	COC (n=718)	FCS (n=718)	RBT (n=718)	SMB (n=719)	SAB (n=718)	WAE (n=720)	WHB (n=718)
0.00	708	669	717	718	718	626	718	336	687
0.14	0	1	0	0	0	1	0	0	0
0.17	0	1	0	0	0	0	0	1	1
0.20	1	2	0	0	0	2	0	3	1
0.25	2	1	0	0	0	5	0	4	4
0.29	0	0	0	0	0	0	0	1	0
0.33	2	6	0	0	0	16	0	12	6
0.40	0	2	0	0	0	1	0	1	0
0.50	3	9	1	0	0	16	0	26	4
0.60	0	0	0	0	0	1	0	0	0
0.67	0	2	0	0	0	4	0	8	1
0.75	0	0	0	0	0	2	0	2	0
0.80	0	0	0	0	0	0	0	1	0
0.83	0	0	0	0	0	0	0	1	0
1.00	2	13	0	0	0	16	0	45	5
1.20	0	0	0	0	0	0	0	1	0
1.25	0	0	0	0	0	1	0	2	0
1.33	0	2	0	0	0	1	0	10	2
1.40	0	0	0	0	0	0	0	1	0
1.50	0	4	0	0	0	3	0	24	3
1.60	0	0	0	0	0	0	0	2	0
1.67	0	0	0	0	0	2	0	6	1
1.75	0	0	0	0	0	1	0	2	0
1.80	0	0	0	0	0	0	0	1	0
2.00	0	1	0	0	0	2	0	34	0
2.25	0	0	0	0	0	0	0	1	0
2.33	0	0	0	0	0	0	0	4	0
2.44	0	0	0	0	0	0	0	1	0
2.50	0	0	0	0	0	2	0	10	1
2.67	0	0	0	0	0	0	0	7	0
2.75	0	1	0	0	0	0	0	3	0
3.00	0	3	0	0	0	0	0	23	1
3.25	0	0	0	0	0	0	0	2	0
3.33	0	0	0	0	0	1	0	4	0
3.40	0	1	0	0	0	0	0	0	0
3.50	0	0	0	0	0	1	0	15	0
3.60	0	0	0	0	0	0	0	1	0
3.67	0	0	0	0	0	0	0	6	0
3.75	0	0	0	0	0	0	0	1	0
3.80	0	0	0	0	0	0	0	1	0
4.00	0	1	0	0	0	0	0	110	0

4.14	0	0	0	0	0	0	0	1	0
4.25	0	0	0	0	0	1	0	1	0
4.33	0	0	0	0	0	1	0	0	0
4.50	0	0	0	0	0	2	0	2	0
4.67	0	0	0	0	0	0	0	1	0
5.00	0	0	0	0	0	9	0	0	0
5.50	0	0	0	0	0	0	0	1	1
6.00	0	0	0	0	0	1	0	1	0
8.00	0	0	0	0	0	1	0	0	0

Summer 2019

Counts

Angler Harvest	BLC (n=695)	CCF (n=695)	COC (n=695)	FCS (n=695)	RBT (n=695)	SMB (n=695)	SAB (n=695)	WAE (n=695)	WHB (n=695)
0.00	686	675	694	693	695	593	693	184	660
0.20	0	2	0	0	0	2	0	2	2
0.25	2	4	0	0	0	6	1	6	2
0.33	2	1	1	0	0	17	0	3	3
0.40	0	0	0	0	0	4	0	0	0
0.43	0	0	0	0	0	0	0	1	0
0.50	0	2	0	1	0	21	1	19	4
0.60	0	0	0	0	0	1	0	1	0
0.67	0	2	0	0	0	8	0	7	1
0.71	0	0	0	0	0	0	0	1	0
0.75	0	0	0	0	0	0	0	9	0
0.80	0	0	0	0	0	0	0	2	0
0.83	0	1	0	0	0	0	0	0	0
1.00	4	3	0	0	0	15	0	36	6
1.20	0	0	0	0	0	0	0	1	0
1.25	0	0	0	0	0	1	0	4	0
1.33	0	0	0	0	0	2	0	10	0
1.40	0	0	0	0	0	0	0	1	0
1.50	0	0	0	1	0	7	0	22	2
1.60	0	0	0	0	0	0	0	2	0
1.67	1	0	0	0	0	3	0	6	1
1.75	0	0	0	0	0	1	0	4	1
1.86	0	0	0	0	0	1	0	0	0
2.00	0	2	0	0	0	3	0	41	2
2.25	0	0	0	0	0	0	0	2	0
2.33	0	0	0	0	0	0	0	8	1
2.40	0	0	0	0	0	0	0	1	0
2.50	0	0	0	0	0	3	0	22	2
2.67	0	0	0	0	0	0	0	7	0
2.80	0	0	0	0	0	0	0	1	0
3.00	0	0	0	0	0	3	0	37	0
3.17	0	0	0	0	0	0	0	1	0
3.25	0	0	0	0	0	0	0	2	0
3.33	0	0	0	0	0	0	0	7	0
3.43	0	0	0	0	0	0	0	1	0
3.50	0	0	0	0	0	0	0	28	2
3.60	0	0	0	0	0	0	0	1	0
3.67	0	0	0	0	0	0	0	4	0
3.75	0	0	0	0	0	0	0	2	0
4.00	0	1	0	0	0	1	0	198	0
4.25	0	0	0	0	0	0	0	1	0
4.33	0	0	0	0	0	1	0	0	0
4.50	0	0	0	0	0	0	0	1	0

5.00	0	0	0	0	0	2	0	2	0
6.00	0	1	0	0	0	0	0	4	1
6.33	0	0	0	0	0	0	0	1	0
8.33	0	0	0	0	0	0	0	0	1
9.00	0	0	0	0	0	0	0	1	0
10.00	0	0	0	0	0	0	0	0	1
12.00	0	0	0	0	0	0	0	0	1
13.00	0	1	0	0	0	0	0	0	0
21.00	0	0	0	0	0	0	0	0	1
32.00	0	0	0	0	0	0	0	1	0
46.00	0	0	0	0	0	0	0	0	1

Table 11 The number (N) and percent of total interviews in supplemental-response categories by question asked during interviews at Sharpe.

Question: Considering all factors, how satisfied are you with your fishing trip today?

Response	Summer 2019 (n = 693)
Very Satisfied	50%
Moderately Satisfied	31%
Slightly Satisfied	9%
Neutral/No Opinion	4%
Slightly Dissatisfied	3%
Moderately Dissatisfied	2%
Very Dissatisfied	1%