

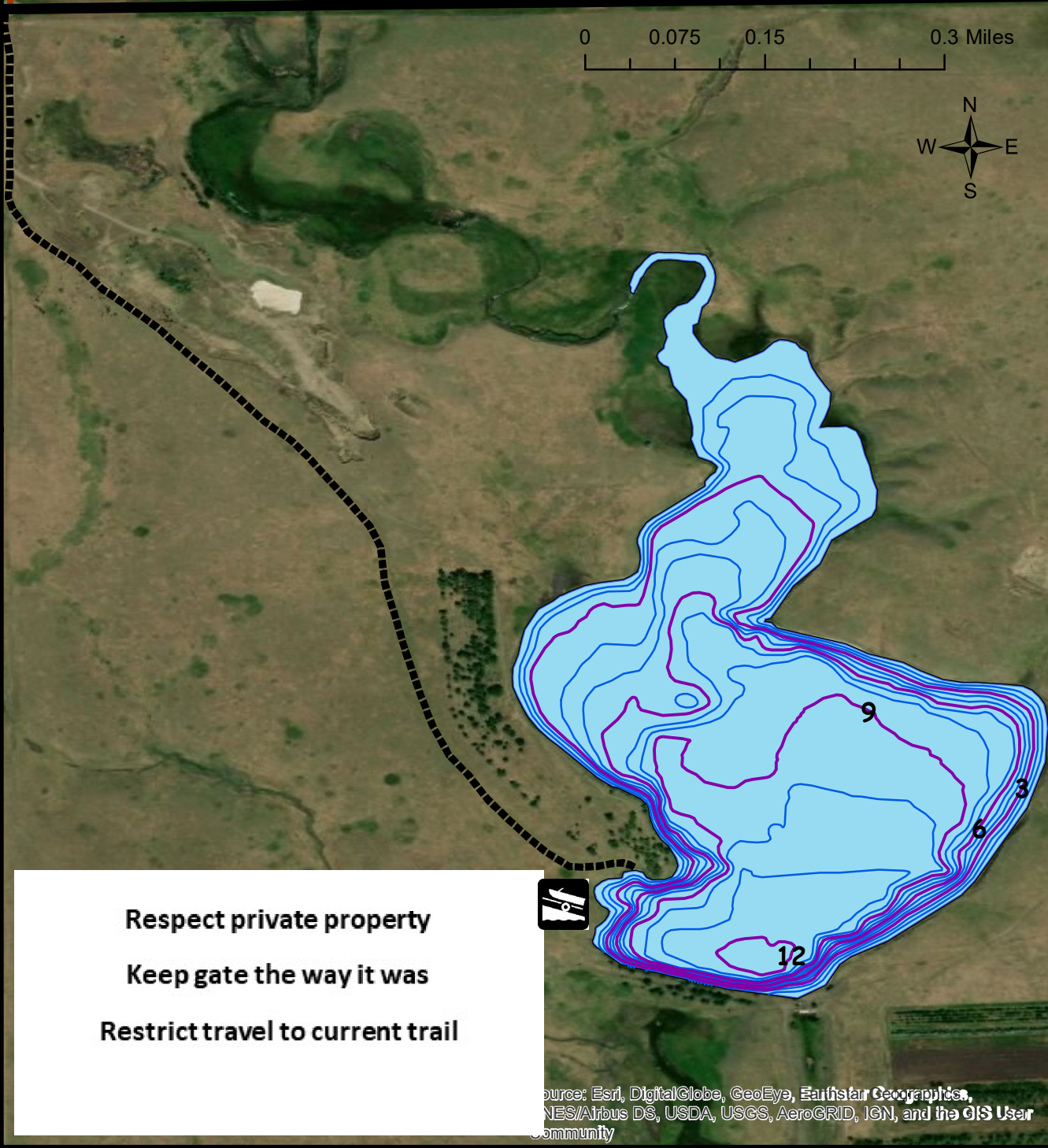
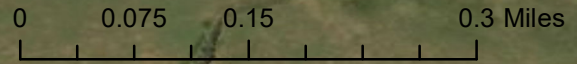


### Mission Lake Hyde County

Lake Area: 59 acres  
Mean Depth: 6.3 ft  
Max Depth: 12.5 ft  
Volume: 366 acre-ft

Map Created: February 2020  
Sonar Survey: June 2019  
Contour Interval: 1 ft  
Benchmark: Full at spillway

216<sup>th</sup> St.



**Respect private property**  
**Keep gate the way it was**  
**Restrict travel to current trail**

Source: Esri, DigitalGlobe, GeoEye, Earthstar Geographics, CNES/Airbus DS, USDA, USGS, AeroGRID, IGN, and the GIS User Community