



Osceola Lake Beadle County, South Dakota

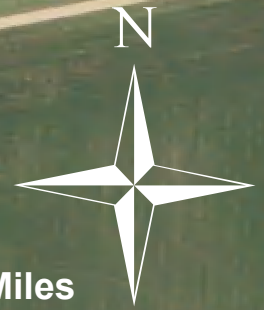
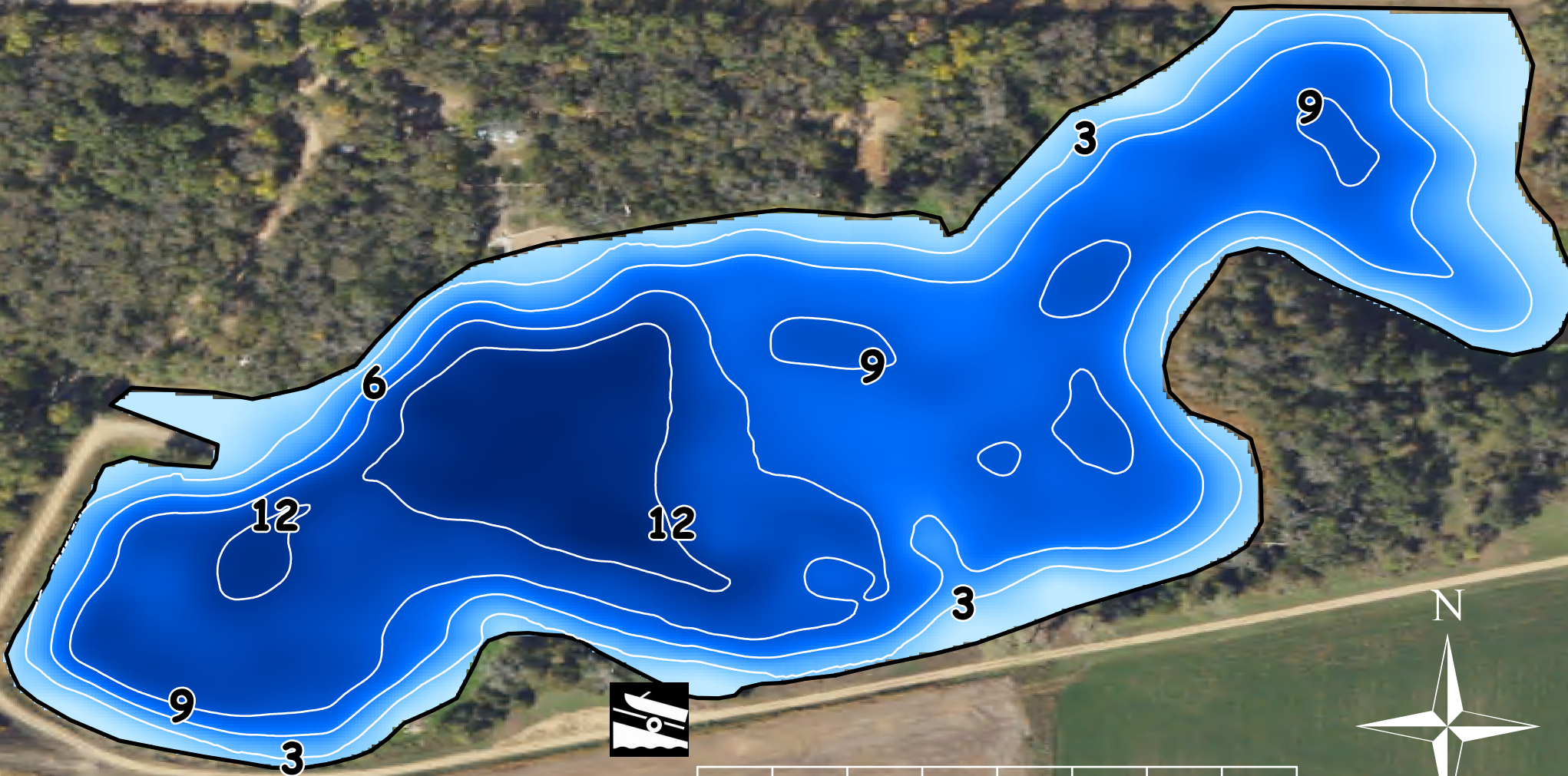
Lake Area: 17.6 acres
Mean Depth: 7.3 ft
Max Depth: 14.2 ft
Volume: 128 acre-ft

Map Created: July 2024
Sonar Survey: June 2024
Contour Interval: 3 ft
Benchmark: Full pool



Boat Ramp

201 ST



0 0.04 0.08 0.15 Miles