

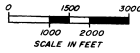
SOUTH DAKOTA
DEPARTMENT OF GAME, FISH AND PARKS
ORMAN DAM
BUTTE COUNTY
1985

FIELD DATA COLLECTED - JULY 1985 PLANNIMETERED ACRES BY STRATA:
SECTIONS: 12, 13, 14, 15, 16, 17, 18, 19, 20, 21, 22, 23, 24, 25, 26, 27, 28, 29, 30, 31, 32, 33, 34, 35, 36 ACRES GREATER THAN 5' --- 6987
10' --- 5819
15' --- 4818
20' --- 3808
25' --- 2808
30' --- 1808
35' --- 808
40' --- 208
45' --- 108
50' --- 8
55' --- 0
AVERAGE DEPTH: 55 FEET
VOLUME: 190,507 ACRE FEET
SCALE: 1" = 1000'

SYMBOLS
DEPTH CONTOUR: -S-
ROAD: ---
WOODED: W
PARTLY WOODED: PW
HAND SURFACE: ---
BUILDINGS: B
DRAIN: ---
TYPICAL: ---
BENCHMARK: B
DAM: DAM
GRASSLAND: GL
SPILLWAY: ---

REPRODUCTION BY PERMISSION OF S. D. GAME, FISH AND PARKS ONLY.

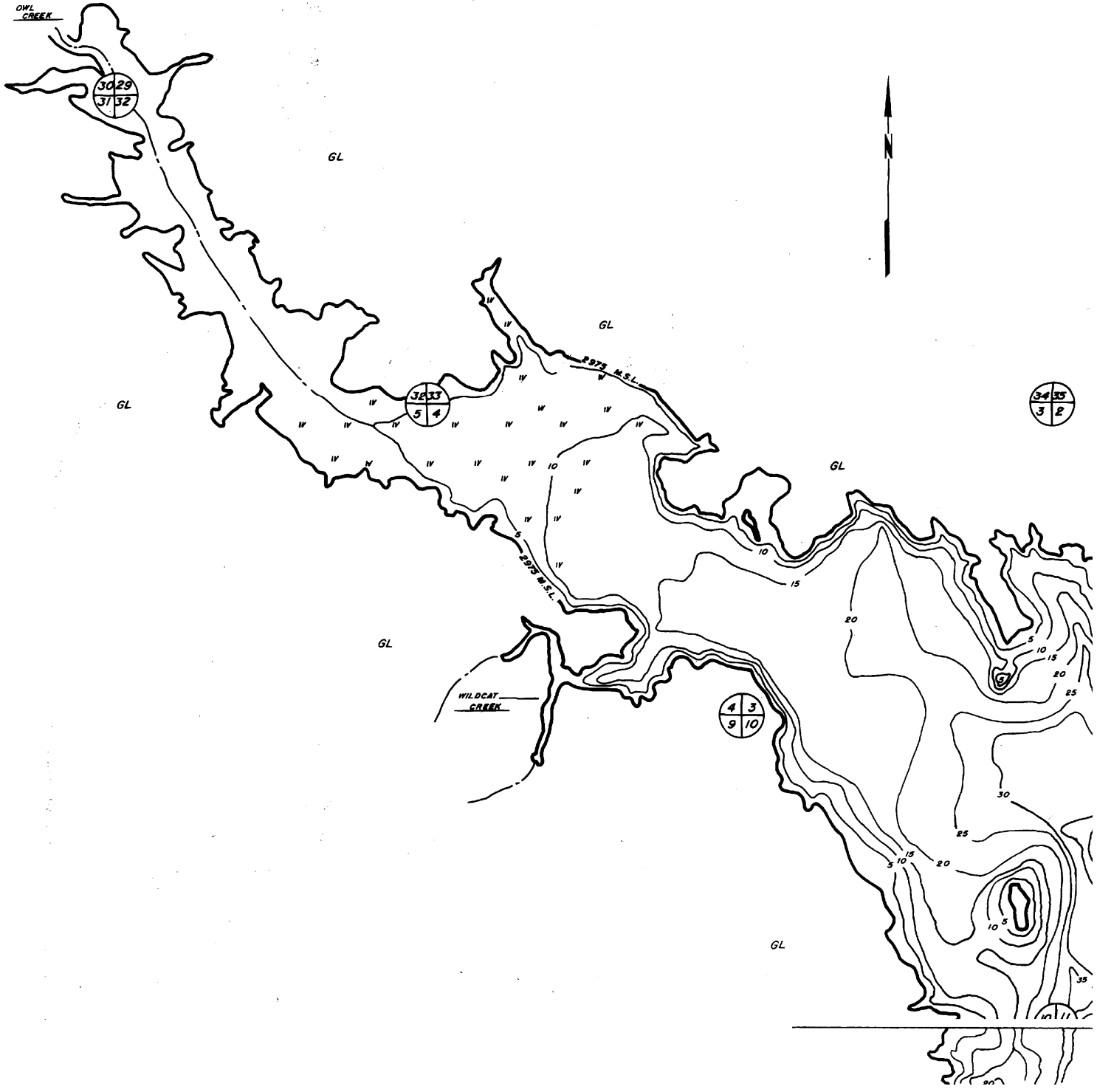
PUBLIC LAND REFERENCE MAP

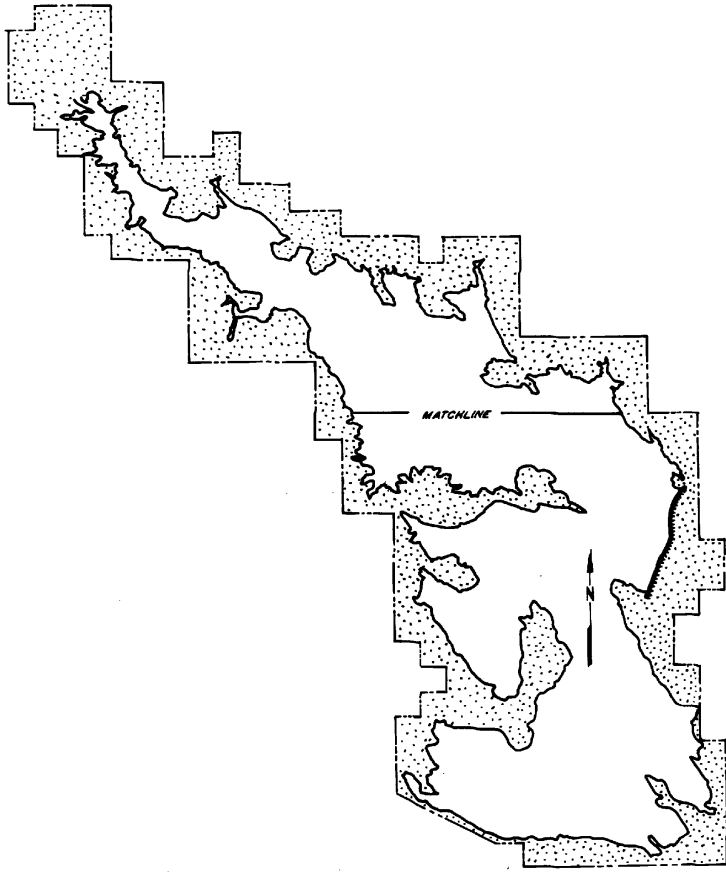


TO BELLE FOURCHE

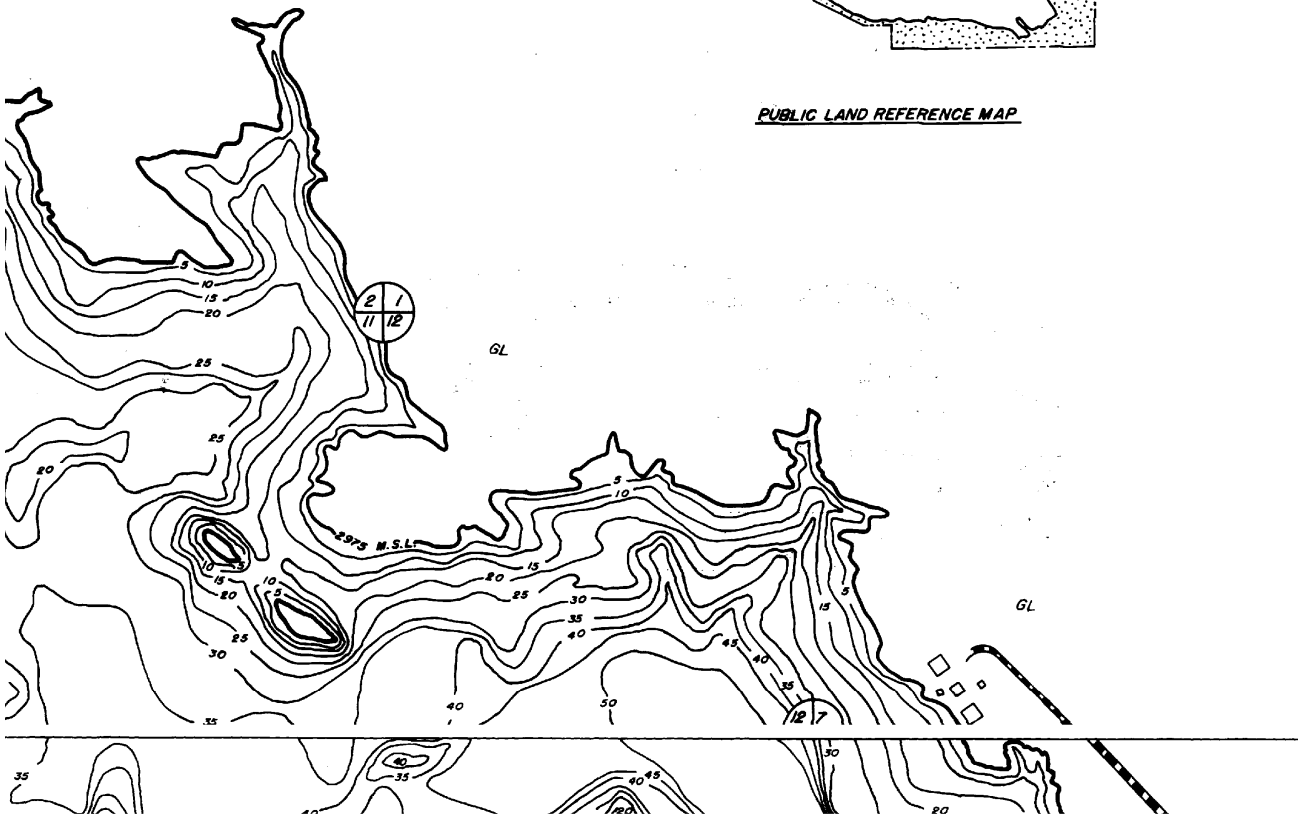
FRUITDALE POINT

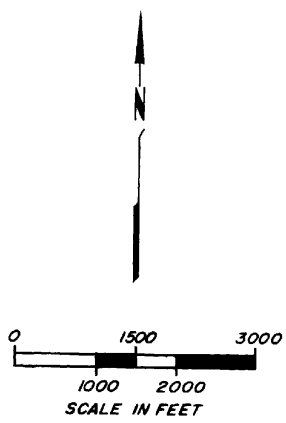
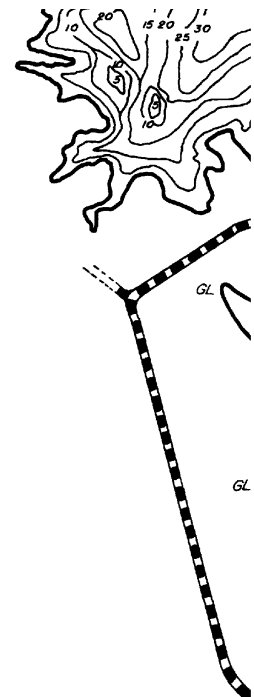
APPAR 80





PUBLIC LAND REFERENCE MAP





SOUTH DAKOTA
DEPARTMENT OF GAME, FISH AND PARKS

ORMAN DAM

BUTTE COUNTY

1985

FIELD DATA COLLECTED : JULY 1985 PLANIMETERED ACREAGE BY STRATA :

SECTIONS : 1,2,3,4,7,11,12,13,14,19,23,24,
25,26,29,30,31,32,33,35,36 ACRES GREATER THAN 5' — 6987

TOWNSHIP : 9 NORTH 10' — 5839

RANGE : 3 EAST 15' — 4813

DRAWN FROM : BELLE FOURCHE 20' — 3386

RESERVOIR TOPO MAP 25' — 2526

SEPTEMBER 1948 30' — 1835

BENCHMARK : SPILLWAY 35' — 990

RESERVOIR HIGH WATERLINE : 2975 M. S. L. 40' — 683

MILES OF SHORELINE : 49.7 45' — 310

PLANIMETERED ACREAGE : 8063 AC 50' — 261

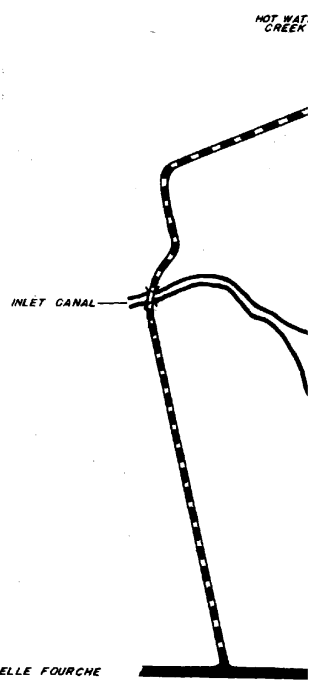
AVERAGE DEPTH : 25 FEET 55' — 46

VOLUME : 120,907 ACRE FEET

SCALE : 1" = 1000'

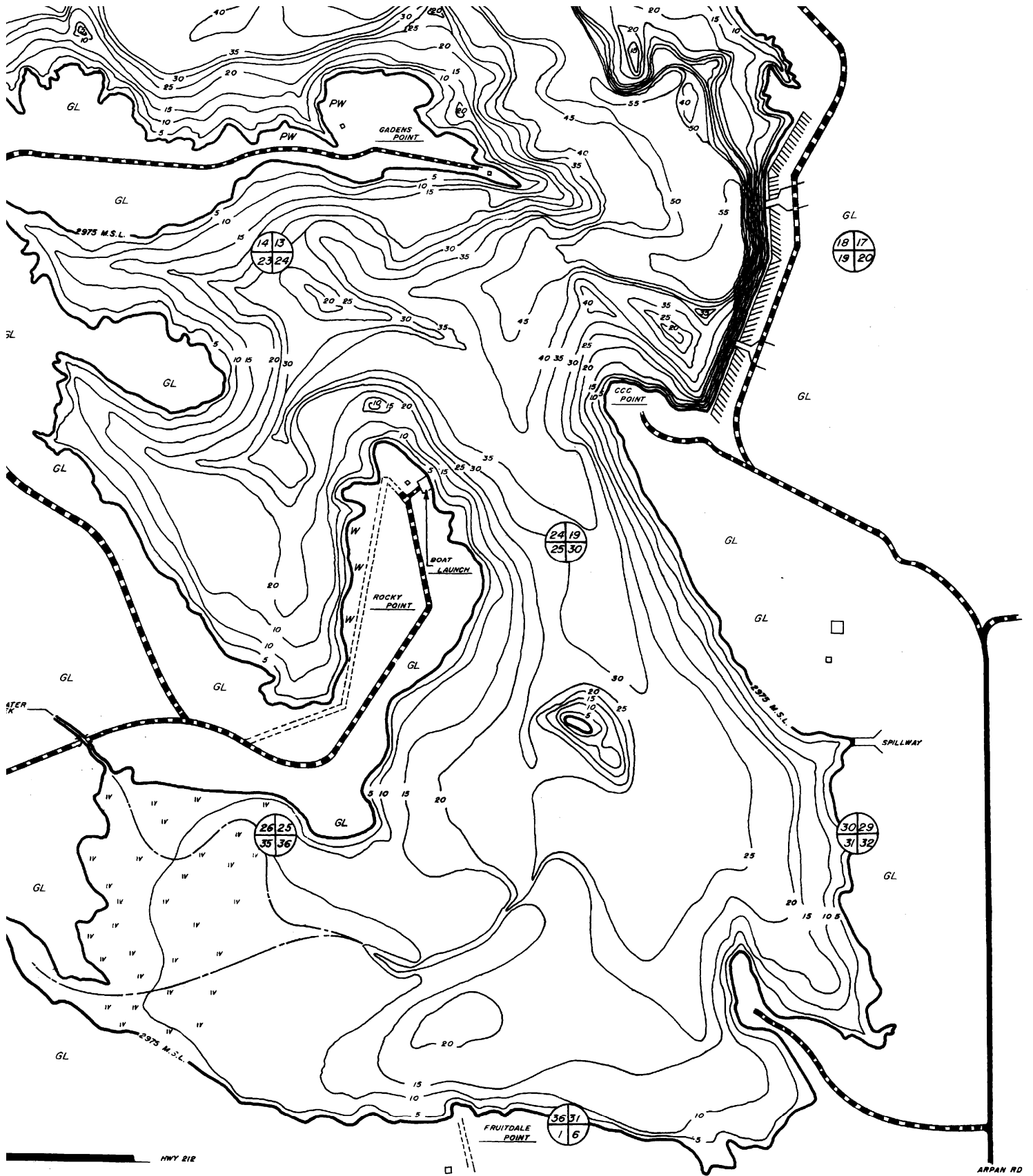
SYMBOLS

DEPTH CONTOUR : -5-	WOODED : W
ROADS : HARD SURFACE : ————	PARTLY WOODED : PW
GRAVEL : ————	BUILDINGS : □
TRAIL : - - - - -	BENCHMARK : ⊕
BRIDGE : ————	DAM : ————
GRASSLAND : GL	SPILLWAY : ————



REPRODUCTION BY PERMISSION OF S.D. GAME, FISH AND PARKS ONLY.

TO BELLE FOURCHE



HWY 212

ARPAN RD