

97°48'0"W

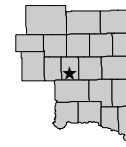
97°47'30"W



Hanson Lake - Hanson Co.



Boat Ramp



Max Depth

Lake Area: 61 acres

Mean Depth: 6.3 ft

Max Depth: 14.5 ft

Shoreline Development Index: 2.1

Volume: 381 acre-ft

Map Created: March 2013

Sonar Survey: August 2010

Depths set 4' 8" below top of NE corner of outlet walkway weir.

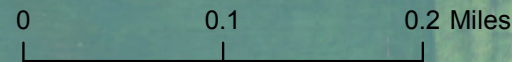
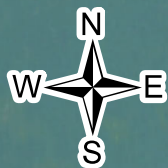
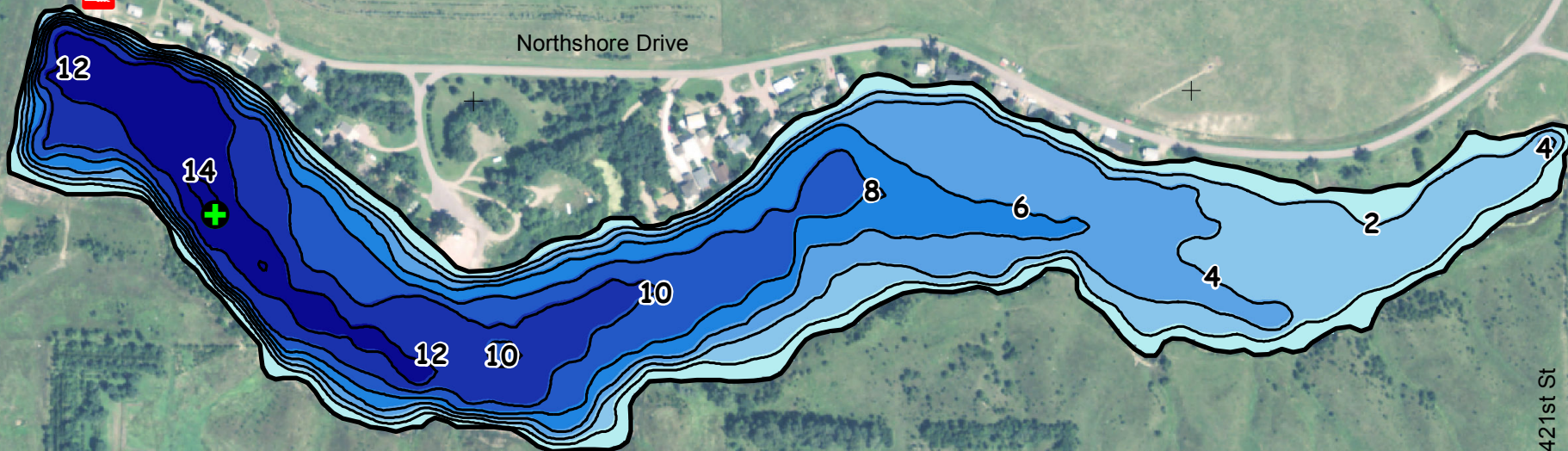
Contour Interval: 2 ft

43°37'30"N

43°37'30"N

Northshore Drive

421st St



Aerial images courtesy of USDA-FSA NAIP 2010

97°48'0"W

97°47'30"W