

96°58'0"W

96°57'0"W

96°56'0"W

43°56'0"N

43°56'0"N

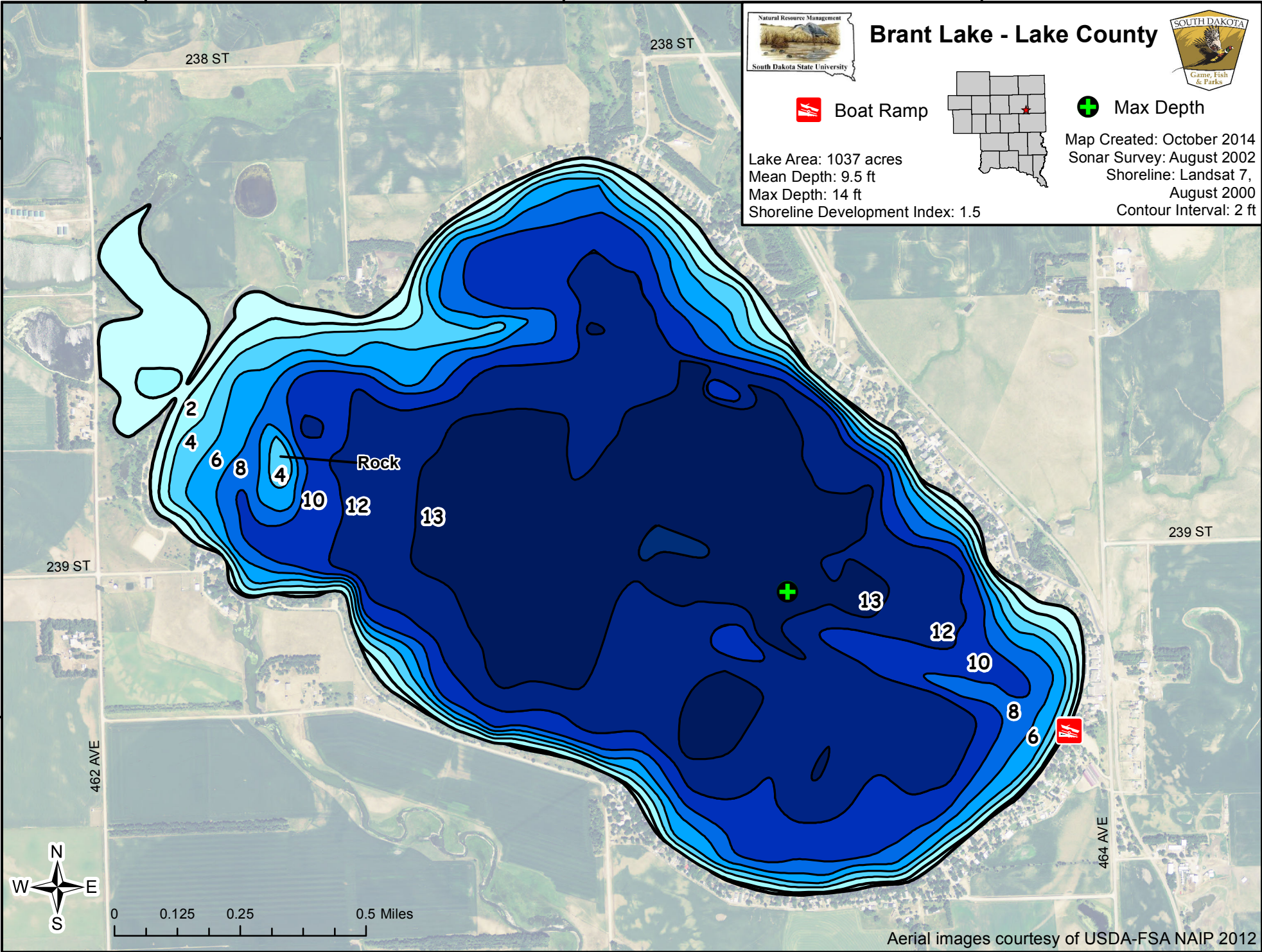
43°55'0"N

43°55'0"N

96°58'0"W

96°57'0"W

96°56'0"W



Brant Lake - Lake County



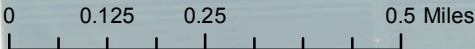
Boat Ramp



Max Depth

Lake Area: 1037 acres
 Mean Depth: 9.5 ft
 Max Depth: 14 ft
 Shoreline Development Index: 1.5

Map Created: October 2014
 Sonar Survey: August 2002
 Shoreline: Landsat 7, August 2000
 Contour Interval: 2 ft



Aerial images courtesy of USDA-FSA NAIP 2012