

April 10, 2026

**ADDENDUM NO. 1**

**RE: Item #1, April 15, 2026 Letting - P-PH 0038(48)306, PCN 05FA, Hanson County - Grading, Structures (2-7x6 CIP RCBC Extension, 2-10x9 CIP or Precast RCBC), Interim Surfacing, Modify Intersection, Pipe Work**

**TO WHOM IT MAY CONCERN:**

The following addenda to the plans shall be inserted and made a part of your proposal for the referenced project.

**SPECIAL PROVISIONS:** NO CHANGE

**SDEBS BID PROPOSAL:** *The electronic bid proposal for this contract has been revised to include the changes associated with this addendum. Bidders must log in to the SDEBS to retrieve and incorporate these changes into their bid.*

**Bid Items were added:**

NO CHANGE

**Quantities for Bid Items were changed:**

110E0600 "Remove Fence" changed from 57,527 to 51,581 Ft

620E0040 "Type 4 Right-of-Way Fence" changed from 3,501 to 3,782 Ft

620E1030 "3 Post Panel" changed from 135 to 134 Each

**Bid Items were removed:**

Bid Item 620E0300 "Special Right-of-Way Fence"

**PLANS:** Please destroy sheets A1, B2, B13 & B58 and replace with the enclosed sheets, dated 3/30/2026.

**Sheets A1, B2: Quantities for Bid Items were changed:**

Bid Item 110E0600 "Remove Fence" changed from 57,527 to 51,581 Ft

Bid Item 620E0040 "Type 4 Right-of-Way Fence" changed from 3,501 to 3,782 Ft

Bid Item 620E1030 "3 Post Panel" changed from 135 to 134 Each

**Bid Items were removed:**

Bid Item 620E0300 "Special Right-of-Way Fence"

**Sheet B13:** Table of FENCE QUANTITIES was revised.

**Sheet B58:** Fence Notes at Stations 1005+20L & 1007+34L were revised from “Begin Special Fence” to “Begin Type 4 Fence” and from “End Special Fence” to “End Type 4 Fence”, respectively.

Sincerely,

Sam Weisgram  
Engineering Supervisor

SW/gp

CC: Travis Dressen, Mitchell Region Engineer  
Jay Peppel, Mitchell Area Engineer

# ESTIMATE OF QUANTITIES AND ENVIRONMENTAL COMMITMENTS

STATE OF SOUTH DAKOTA	PROJECT	SHEET	TOTAL SHEETS
	P-PH 0038(48)306	A1	A7

Plotting Date: 04/10/2026 Rev 03/30/2026 RWB

## Section B - Grading

BID ITEM NUMBER	ITEM	QUANTITY	UNIT
009E0010	Mobilization	Lump Sum	LS
009E3220	Reestablish Right-of-Way and Property Corner	227	Each
009E3225	Reestablish Public Land Survey System Corner	30	Each
009E3230	Grade Staking	9.901	Mile
009E3245	Final Cross Section Survey	9.164	Mile
009E3250	Miscellaneous Staking	9.164	Mile
009E3280	Slope Staking	9.164	Mile
009E3290	Structure Staking	1	Each
009E3301	Engineer Directed Surveying/Staking	40.0	Hour
009E4200	Construction Schedule, Category II	Lump Sum	LS
100E0100	Clearing	Lump Sum	LS
110E0600	Remove Fence	51,581	Ft
110E1100	Remove Concrete Pavement	2,493.4	SqYd
110E7040	Remove Gate for Reset	11	Each
110E7500	Remove Pipe for Reset	54	Ft
110E7510	Remove Pipe End Section for Reset	6	Each
120E0010	Unclassified Excavation	371,109	CuYd
120E0500	Option Borrow Excavation	173,491	CuYd
120E1000	Muck Excavation	16,946	CuYd
120E2000	Undercutting	145,957	CuYd
120E6100	Water for Embankment	3,970.8	MGal
250E0020	Incidental Work, Grading	Lump Sum	LS
260E6010	Granular Material	160.0	Ton
270E0040	Salvage and Stockpile Asphalt Mix and Granular Base Material	138,518.9	Ton
270E0230	Haul and Stockpile Asphalt Mix Material	10,000.0	Ton
421E0100	Pipe Culvert Undercut	406	CuYd
450E0142	24" RCP Class 2, Furnish	204	Ft
450E0150	24" RCP, Install	204	Ft
450E0162	30" RCP Class 2, Furnish	484	Ft
450E0170	30" RCP, Install	484	Ft
450E0182	36" RCP Class 2, Furnish	168	Ft
450E0190	36" RCP, Install	168	Ft
450E0202	48" RCP Class 2, Furnish	204	Ft
450E0210	48" RCP, Install	204	Ft
450E2028	36" RCP Flared End, Furnish	4	Each
450E2029	36" RCP Flared End, Install	4	Each
450E2036	48" RCP Flared End, Furnish	4	Each
450E2037	48" RCP Flared End, Install	4	Each
450E2200	24" RCP Sloped End, Furnish	6	Each
450E2201	24" RCP Sloped End, Install	6	Each
450E2204	30" RCP Sloped End, Furnish	18	Each
450E2205	30" RCP Sloped End, Install	18	Each

BID ITEM NUMBER	ITEM	QUANTITY	UNIT
450E3012	24" RCP Arch Class 2, Furnish	504	Ft
450E3020	24" RCP Arch, Install	504	Ft
450E3022	30" RCP Arch Class 2, Furnish	1,276	Ft
450E3030	30" RCP Arch, Install	1,276	Ft
450E3032	36" RCP Arch Class 2, Furnish	84	Ft
450E3040	36" RCP Arch, Install	84	Ft
450E3042	42" RCP Arch Class 2, Furnish	168	Ft
450E3050	42" RCP Arch, Install	168	Ft
450E3052	48" RCP Arch Class 2, Furnish	84	Ft
450E3060	48" RCP Arch, Install	84	Ft
450E4512	36" RCP Arch Flared End, Furnish	2	Each
450E4513	36" RCP Arch Flared End, Install	2	Each
450E4516	42" RCP Arch Flared End, Furnish	4	Each
450E4517	42" RCP Arch Flared End, Install	4	Each
450E4520	48" RCP Arch Flared End, Furnish	2	Each
450E4521	48" RCP Arch Flared End, Install	2	Each
450E4600	24" RCP Arch Sloped End, Furnish	16	Each
450E4601	24" RCP Arch Sloped End, Install	16	Each
450E4604	30" RCP Arch Sloped End, Furnish	26	Each
450E4605	30" RCP Arch Sloped End, Install	26	Each
450E4759	18" CMP 16 Gauge, Furnish	1,180	Ft
450E4760	18" CMP, Install	1,180	Ft
450E4769	24" CMP 16 Gauge, Furnish	430	Ft
450E4770	24" CMP, Install	430	Ft
450E4779	30" CMP 16 Gauge, Furnish	464	Ft
450E4780	30" CMP, Install	464	Ft
450E4789	36" CMP 16 Gauge, Furnish	168	Ft
450E4790	36" CMP, Install	168	Ft
450E5406	18" CMP Safety End, Furnish	36	Each
450E5407	18" CMP Safety End, Install	36	Each
450E5410	24" CMP Safety End, Furnish	14	Each
450E5411	24" CMP Safety End, Install	14	Each
450E5414	30" CMP Safety End, Furnish	14	Each
450E5417	30" CMP Safety End, Install	14	Each
450E5420	36" CMP Safety End, Furnish	4	Each
450E5423	36" CMP Safety End, Install	4	Each
450E5519	24" CMP Arch 16 Gauge, Furnish	304	Ft
450E5520	24" CMP Arch, Install	304	Ft
450E5529	30" CMP Arch 16 Gauge, Furnish	168	Ft
450E5530	30" CMP Arch, Install	168	Ft
450E6010	24" CMP Arch Safety End, Furnish	8	Each
450E6011	24" CMP Arch Safety End, Install	8	Each
450E6014	30" CMP Arch Safety End, Furnish	4	Each

BID ITEM NUMBER	ITEM	QUANTITY	UNIT
450E6017	30" CMP Arch Safety End, Install	4	Each
* 450E8900	Cleanout Pipe Culvert	1	Each
450E9000	Reset Pipe	54	Ft
450E9001	Reset Pipe End Section	6	Each
451E0004	4" PVC Encasement Pipe	86	Ft
464E0100	Controlled Density Fill	46.4	CuYd
600E0200	Type II Field Laboratory	1	Each
620E0010	Type 1 Right-of-Way Fence	874	Ft
620E0020	Type 2 Right-of-Way Fence	33,223	Ft
620E0030	Type 3 Right-of-Way Fence	8,579	Ft
620E0040	Type 4 Right-of-Way Fence	3,782	Ft
620E0060	Type 6 Right-of-Way Fence	995	Ft
620E0510	Type 1 Temporary Fence	10,162	Ft
620E0520	Type 2 Temporary Fence	1,218	Ft
620E1020	2 Post Panel	71	Each
620E1030	3 Post Panel	134	Each
620E2012	12' Tubular Gate	8	Each
620E2100	Reset Gate	11	Each
720E1015	Bank and Channel Protection Gabion	24.0	CuYd
734E0900	Temporary Diversion Channel for Fish Passage	1	Each
831E0110	Type B Drainage Fabric	68	SqYd
900E0010	Refurbish Single Mailbox	9	Each
900E1150	Concrete Right of Way Marker	32	Each

\* - Denotes Non-Participating

## Section C - Traffic Control

BID ITEM NUMBER	ITEM	QUANTITY	UNIT
634E0010	Flagging	200.0	Hour
634E0020	Pilot Car	100.0	Hour
634E0110	Traffic Control Signs	1,579.4	SqFt
634E0120	Traffic Control, Miscellaneous	Lump Sum	LS
634E0275	Type 3 Barricade	58	Each
634E1002	Detour and Restriction Signing	1,117.7	SqFt

Plot Scale - 1:200

Plotted From - TRPR18163

File - ...:\pjhans057\ANotes\SectionA.dgn

**SECTION B ESTIMATE OF QUANTITIES**

BID ITEM NUMBER	ITEM	QUANTITY	UNIT
009E0010	Mobilization	Lump Sum	LS
009E3220	Reestablish Right-of-Way and Property Corner	227	Each
009E3225	Reestablish Public Land Survey System Corner	30	Each
009E3230	Grade Staking	9.901	Mile
009E3245	Final Cross Section Survey	9.164	Mile
009E3250	Miscellaneous Staking	9.164	Mile
009E3280	Slope Staking	9.164	Mile
009E3290	Structure Staking	1	Each
009E3301	Engineer Directed Surveying/Staking	40.0	Hour
009E4200	Construction Schedule, Category II	Lump Sum	LS
100E0100	Clearing	Lump Sum	LS
110E0600	Remove Fence	51,581	Ft
110E1100	Remove Concrete Pavement	2,493.4	SqYd
110E7040	Remove Gate for Reset	11	Each
110E7500	Remove Pipe for Reset	54	Ft
110E7510	Remove Pipe End Section for Reset	6	Each
120E0010	Unclassified Excavation	371,109	CuYd
120E0500	Option Borrow Excavation	173,491	CuYd
120E1000	Muck Excavation	16,946	CuYd
120E2000	Undercutting	145,957	CuYd
120E6100	Water for Embankment	3,970.8	MGal
250E0020	Incidental Work, Grading	Lump Sum	LS
260E6010	Granular Material	160.0	Ton
270E0040	Salvage and Stockpile Asphalt Mix and Granular Base Material	138,518.9	Ton
270E0230	Haul and Stockpile Asphalt Mix Material	10,000.0	Ton
421E0100	Pipe Culvert Undercut	406	CuYd
450E0142	24" RCP Class 2, Furnish	204	Ft
450E0150	24" RCP, Install	204	Ft
450E0162	30" RCP Class 2, Furnish	484	Ft
450E0170	30" RCP, Install	484	Ft
450E0182	36" RCP Class 2, Furnish	168	Ft
450E0190	36" RCP, Install	168	Ft
450E0202	48" RCP Class 2, Furnish	204	Ft
450E0210	48" RCP, Install	204	Ft
450E2028	36" RCP Flared End, Furnish	4	Each
450E2029	36" RCP Flared End, Install	4	Each
450E2036	48" RCP Flared End, Furnish	4	Each
450E2037	48" RCP Flared End, Install	4	Each
450E2200	24" RCP Sloped End, Furnish	6	Each
450E2201	24" RCP Sloped End, Install	6	Each
450E2204	30" RCP Sloped End, Furnish	18	Each
450E2205	30" RCP Sloped End, Install	18	Each

BID ITEM NUMBER	ITEM	QUANTITY	UNIT
450E3012	24" RCP Arch Class 2, Furnish	504	Ft
450E3020	24" RCP Arch, Install	504	Ft
450E3022	30" RCP Arch Class 2, Furnish	1,276	Ft
450E3030	30" RCP Arch, Install	1,276	Ft
450E3032	36" RCP Arch Class 2, Furnish	84	Ft
450E3040	36" RCP Arch, Install	84	Ft
450E3042	42" RCP Arch Class 2, Furnish	168	Ft
450E3050	42" RCP Arch, Install	168	Ft
450E3052	48" RCP Arch Class 2, Furnish	84	Ft
450E3060	48" RCP Arch, Install	84	Ft
450E4512	36" RCP Arch Flared End, Furnish	2	Each
450E4513	36" RCP Arch Flared End, Install	2	Each
450E4516	42" RCP Arch Flared End, Furnish	4	Each
450E4517	42" RCP Arch Flared End, Install	4	Each
450E4520	48" RCP Arch Flared End, Furnish	2	Each
450E4521	48" RCP Arch Flared End, Install	2	Each
450E4600	24" RCP Arch Sloped End, Furnish	16	Each
450E4601	24" RCP Arch Sloped End, Install	16	Each
450E4604	30" RCP Arch Sloped End, Furnish	26	Each
450E4605	30" RCP Arch Sloped End, Install	26	Each
450E4759	18" CMP 16 Gauge, Furnish	1,180	Ft
450E4760	18" CMP, Install	1,180	Ft
450E4769	24" CMP 16 Gauge, Furnish	430	Ft
450E4770	24" CMP, Install	430	Ft
450E4779	30" CMP 16 Gauge, Furnish	464	Ft
450E4780	30" CMP, Install	464	Ft
450E4789	36" CMP 16 Gauge, Furnish	168	Ft
450E4790	36" CMP, Install	168	Ft
450E5406	18" CMP Safety End, Furnish	36	Each
450E5407	18" CMP Safety End, Install	36	Each
450E5410	24" CMP Safety End, Furnish	14	Each
450E5411	24" CMP Safety End, Install	14	Each
450E5414	30" CMP Safety End, Furnish	14	Each
450E5417	30" CMP Safety End, Install	14	Each
450E5420	36" CMP Safety End, Furnish	4	Each
450E5423	36" CMP Safety End, Install	4	Each
450E5519	24" CMP Arch 16 Gauge, Furnish	304	Ft
450E5520	24" CMP Arch, Install	304	Ft
450E5529	30" CMP Arch 16 Gauge, Furnish	168	Ft
450E5530	30" CMP Arch, Install	168	Ft
450E6010	24" CMP Arch Safety End, Furnish	8	Each
450E6011	24" CMP Arch Safety End, Install	8	Each
450E6014	30" CMP Arch Safety End, Furnish	4	Each

BID ITEM NUMBER	ITEM	QUANTITY	UNIT
450E6017	30" CMP Arch Safety End, Install	4	Each
* 450E8900	Cleanout Pipe Culvert	1	Each
450E9000	Reset Pipe	54	Ft
450E9001	Reset Pipe End Section	6	Each
451E0004	4" PVC Encasement Pipe	86	Ft
464E0100	Controlled Density Fill	46.4	CuYd
600E0200	Type II Field Laboratory	1	Each
620E0010	Type 1 Right-of-Way Fence	874	Ft
620E0020	Type 2 Right-of-Way Fence	33,223	Ft
620E0030	Type 3 Right-of-Way Fence	8,579	Ft
620E0040	Type 4 Right-of-Way Fence	3,782	Ft
620E0060	Type 6 Right-of-Way Fence	995	Ft
620E0510	Type 1 Temporary Fence	10,162	Ft
620E0520	Type 2 Temporary Fence	1,218	Ft
620E1020	2 Post Panel	71	Each
620E1030	3 Post Panel	134	Each
620E2012	12' Tubular Gate	8	Each
620E2100	Reset Gate	11	Each
720E1015	Bank and Channel Protection Gabion	24.0	CuYd
734E0900	Temporary Diversion Channel for Fish Passage	1	Each
831E0110	Type B Drainage Fabric	68	SqYd
900E0010	Refurbish Single Mailbox	9	Each
900E1150	Concrete Right of Way Marker	32	Each

\* - Denotes Non-Participating

# FENCE QUANTITIES

STATE OF SOUTH DAKOTA	PROJECT P-PH 0038(48)306	SHEET B13	TOTAL SHEETS B85
-----------------------	-----------------------------	--------------	---------------------

Plotting Date: 03/30/2026 Rev 03/30/2026 RWB

Station to Station		Side (L/R)	Right-of-Way Fence					Temporary Fence		Post Panels		Gates (for informational purposes only)			Remove Gate for Reset Tubular Gate (Each)	Reset Gate Tubular Gate (Each)	Stream Crossing (for informational purposes only) N.A.B.I. (Ft)	Remove Fence (Ft)	
			Type 1 (Ft)	Type 2 (Ft)	Type 3 (Ft)	Type 4 (Ft)	Type 6 (Ft)	Type 1 (Ft)	Type 2 (Ft)	2 Post Panel (Each)	3 Post Panel (Each)	12' Tubular Gate (Each)	24' N.A.B.I. Barbed Wire Gate (Each)	40' N.A.B.I. Barbed Wire Gate (Each)					
519+52	535+23	L		1636					6	4							1636		
519+48	523+33	R				465			2	5	2			2	2		524		
523+30	529+92	R		658					2	2							705		
529+92	535+40	R		573						2							598		
536+10	549+21	R		1342					1	3							1364		
629+35	640+48	L		1267				1218	4	6	2						1269		
641+40	648+72	R		849					5	4			1				934		
653+63	666+25	R		1314			1280			4							1345		
671+93	673+26	R		129			129		4								210		
673+26	676+22	R		320						2							315		
676+22	693+49	R				1757			2	4			1				1791		
720+10	743+49	L		2444					3	8			1				2377		
743+49	746+25	L				328			2	2							2654		
746+84	755+73	L					995		1	7							1101		
772+86	798+94	R		2649			2661		2	4							2684		
799+74	829+44	L			3010				5	9	4			2	2	101	2990		
799+79	809+76	R		1084					3	5						88	1128		
809+76	810+11	R		62					1	2							130		
812+88	814+46	R		154					2								0		
814+46	816+32	R	204						3								253		
816+32	822+96	R	670							1						1	670		
822+89	829+47	R		677						3							704		
829+39	829+39	L												2	2		0		
829+45	855+43	L			2758		2601			8				3	3		2729		
829+47	855+47	R		2654					3	2							2709		
856+07	882+12	L		2665			2633		2	6			1				2716		
856+09	863+00	R			778		858		2	4							829		
863+00	868+54	R				581				1			1				558		
868+54	882+16	R		1362					1	2							1358		
885+83	907+90	R		2234					1	5						1	2261		
953+10	960+44	R		795					4	3							1278		
967+78	987+63	L			2033				3	5				2	2		2644		
1000+10	1007+34	L				651				8							607		
1014+12	1040+25	R		2685					2	4							2718		
1040+25	1066+32	R		2607					3	2							2607		
1066+92	1079+79	R		1282					1	1							1282		
1067+09	1081+93	L		1522					1	5							1675		
1079+79	1082+38	R		259						1							228		
<b>TOTALS:</b>			874	33223	8579	3782	995	10162	1218	71	134	8		5	2	11	11	189	51581

Plot Scale - 1:200

Plotted From - TRPR18163

File - ...:\pjhans05\FAT\table\Fence.dgn

Plot Scale - 1:200

Plotted From - TRPR18163

997+53  
Take Out 30"-83' RCP  
(Incidental Work, Grading)

997+53 (51 ac)  
Install Twin 30"-92' RCP Arch  
with Controlled Density Fill  
(Spaced 4.6' C to C)  
& 4 Sloped Ends

1013+82-61' L  
Take Out 16"-39' RCP  
(Incidental Work, Grading)

1013+82-59' R  
Take Out 16"-41' RCP  
(Incidental Work, Grading)

1013+81-44' R (15 ac)  
Install Twin 24"-64' CMP  
with Controlled Density Fill  
(Spaced 3.2' C to C)  
& 4 Safety Ends

1013+81-49' L (37 ac)  
Install 30"-66' CMP  
& 2 Safety Ends

1019+92  
Take Out 24"-65' RCP  
(Incidental Work, Grading)

1019+92 (89 ac)  
Install Twin 30"-84' RCP Arch  
(Spaced 24' C to C)  
& 4 Sloped Ends

STATE OF SOUTH DAKOTA	PROJECT P-PH 0038(48)306	SHEET B58	TOTAL SHEETS B85
-----------------------	-----------------------------	--------------	---------------------

Plotting Date: 03/30/2026 Rev 03/30/2026 RWB

Refurbish mailboxes  
at the following location:  
1004+37 R (single)



Sec 22 - T103N - R57W

1005+20 L  
Begin Type 4 Fence

Sec 23 - T103N - R57W

1003+09 L  
End Type 4 Fence

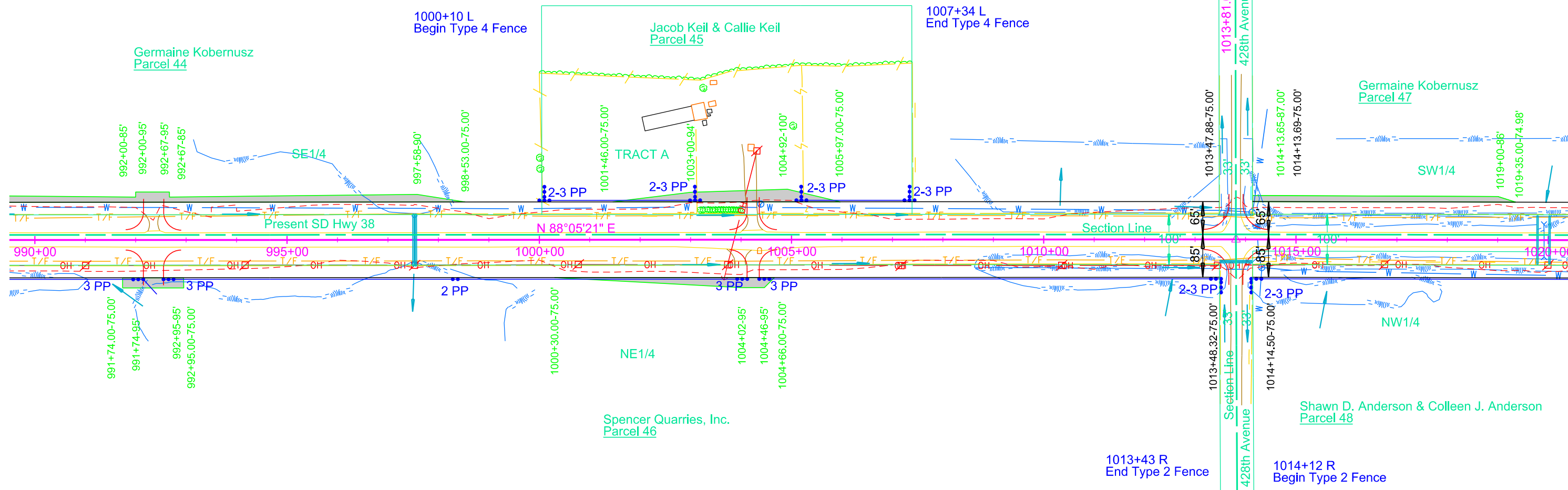
1000+10 L  
Begin Type 4 Fence

1007+34 L  
End Type 4 Fence

Germaine Kobernusz  
Parcel 44

Jacob Keil & Callie Keil  
Parcel 45

Germaine Kobernusz  
Parcel 47



Sec 27 - T103N - R57W

PI 1013+81.00  
N 510402.95  
E 2678831.21  
Del 0°08'18" R

Sec 26 - T103N - R57W

Parcel 46  
991+74.00 to 992+95.00 R  
Temporary Easement containing  
0.1 ac, more or less

Parcel 46  
1000+30.00 to 1004+66.00 R  
Temporary Easement containing  
0.1 ac, more or less

Parcel 45  
1001+46.00 to 1005+97.00 L  
Temporary Easement containing  
0.2 ac, more or less

Parcel 47  
1014+13.65 to 1019+35.00 L  
Temporary Easement containing  
0.1 ac, more or less

File - U:\trp\jrhans05\FA0990.dgn