



Planning & Engineering  
Office of Project Development  
700 E Broadway Avenue  
Pierre, South Dakota 57501-2586  
O: 605.773.3275 | F: 605.773.2614  
dot.sd.gov

November 12, 2024

**ADDENDUM NO. 1**

**RE: Item #8, November 20, 2024 Letting - P 0079(90)203, PCN 06RR, Harding County - Cold Milling, Asphalt Concrete Resurfacing, Pipe Work**

**TO WHOM IT MAY CONCERN:**

The following addenda to the plans shall be inserted and made a part of your proposal for the referenced project.

**SPECIAL PROVISIONS:** NO CHANGE

**SDEBS BID PROPOSAL:** *The electronic bid proposal for this contract has been revised to include the changes associated with this addendum. Bidders must log in to the SDEBS to retrieve and incorporate these changes into their bid.*

**Quantities for Bid Items were changed:**

Bid Item 720E1010 "PVC Coated Bank and Channel Protection Gabion" changed from 31.6 to 36 CuYd

**PLANS:** Please destroy sheets 2, 11, 23, 31, 33, 70, 73, and 74 and replace with the enclosed sheets, dated 10/31/24.

**Sheet 2:** Quantities for Bid Item 720E1010 "PVC Coated Bank and Channel Protection Gabion" changed from 31.6 to 36 CuYd.

**Sheet 11:** TABLE OF PIPE WORK QUANTITIES was revised.

**Sheets 23 & 70:** Quantities for PVC Coated Bank and Channel Protection Gabions and Type B Drainage Fabric at MRM 215+0.071 were revised.

**Sheets 31 & 73:** Quantities for PVC Coated Bank and Channel Protection Gabions and Type B Drainage Fabric at MRM 207+0.307 were revised.

**Sheets 33 & 74:** Quantities for PVC Coated Bank and Channel Protection Gabions and Type B Drainage Fabric at MRM 205+0.288 were revised.

Sincerely,

Sam Weisgram  
Engineering Supervisor

SW/cj

CC: Todd Seaman, Rapid City Region Engineer  
John Matthesen, Belle Fourche Area Engineer

**ESTIMATE OF QUANTITIES**

Revised 10/31/24 GDS

BID ITEM NUMBER	ITEM	QUANTITY	UNIT
009E0010	Mobilization	Lump Sum	LS
009E3320	Checker	Lump Sum	LS
100E0020	Clear and Grub Tree	1	Each
110E0510	Remove Pipe End Section	22	Each
110E0600	Remove Fence	210	Ft
110E0730	Remove Beam Guardrail	1,925.0	Ft
110E0800	Remove W Beam Guardrail End Terminal	16	Each
110E0810	Remove Rubrail	65.6	Ft
110E1010	Remove Asphalt Concrete Pavement	1,142.4	SqYd
110E5451	Salvage Riprap	75.0	Ton
110E7500	Remove Pipe for Reset	24	Ft
110E7510	Remove Pipe End Section for Reset	23	Each
120E0100	Unclassified Excavation, Digouts	762	CuYd
120E0600	Contractor Furnished Borrow	190	CuYd
120E6200	Water for Granular Material	30.5	MGal
210E0100	Shoulder Clearing	30.5	Mile
230E0100	Remove and Replace Topsoil	Lump Sum	LS
250E0020	Incidental Work, Grading	Lump Sum	LS
260E1010	Base Course	2,011.2	Ton
260E1050	Base Course, Salvaged Asphalt Mix	1,523.0	Ton
320E1200	Asphalt Concrete Composite	500.9	Ton
320E1800	Asphalt Concrete Blade Laid	2,284.5	Ton
320E7008	Grind 8" Rumble Strip or Stripe in Asphalt Concrete	30.5	Mile
320E7040	Grind 6" Transverse Rumble Strip in Asphalt Concrete	442.0	Ft
330E0100	SS-1h or CSS-1h Asphalt for Tack	162.1	Ton
330E0210	SS-1h or CSS-1h Asphalt for Flush Seal	51.8	Ton
330E2000	Sand for Flush Seal	785.8	Ton
332E0010	Cold Milling Asphalt Concrete	227,936	SqYd
450E0122	18" RCP Class 2, Furnish	28	Ft
450E0130	18" RCP, Install	28	Ft
450E0142	24" RCP Class 2, Furnish	32	Ft
450E0150	24" RCP, Install	32	Ft
450E0162	30" RCP Class 2, Furnish	32	Ft
450E0170	30" RCP, Install	32	Ft
450E0202	48" RCP Class 2, Furnish	12	Ft
450E0210	48" RCP, Install	12	Ft
450E2032	42" RCP Flared End, Furnish	3	Each
450E2033	42" RCP Flared End, Install	3	Each
450E2044	60" RCP Flared End, Furnish	2	Each
450E2045	60" RCP Flared End, Install	2	Each
450E2060	84" RCP Flared End, Furnish	2	Each
450E2061	84" RCP Flared End, Install	2	Each
450E2200	24" RCP Sloped End, Furnish	6	Each

BID ITEM NUMBER	ITEM	QUANTITY	UNIT
450E2201	24" RCP Sloped End, Install	6	Each
450E2204	30" RCP Sloped End, Furnish	2	Each
450E2205	30" RCP Sloped End, Install	2	Each
450E2208	36" RCP Sloped End, Furnish	1	Each
450E2209	36" RCP Sloped End, Install	1	Each
450E2304	18" RCP Safety End, Furnish	10	Each
450E2307	18" RCP Safety End, Install	10	Each
450E3032	36" RCP Arch Class 2, Furnish	12	Ft
450E3040	36" RCP Arch, Install	12	Ft
* 450E8900	Cleanout Pipe Culvert	4	Each
450E8910	Cleanout for Culvert Treatment	6	Each
450E9000	Reset Pipe	24	Ft
450E9001	Reset Pipe End Section	23	Each
450E9524	24" Cured in Place Pipe	192	Ft
450E9530	42" Cured in Place Pipe	115	Ft
450E9536	60" Cured in Place Pipe	90	Ft
450E9636	60" Cured in Place Arch Pipe	112	Ft
600E0300	Type III Field Laboratory	1	Each
620E0020	Type 2 Right-of-Way Fence	210	Ft
620E0510	Type 1 Temporary Fence	420	Ft
620E1020	2 Post Panel	4	Each
630E0500	Type 1 MGS	400.0	Ft
630E1010	Straight Class A W Beam Guardrail with Wood Posts	212.5	Ft
630E1050	Straight Class B W Beam Guardrail with Wood Posts	100.0	Ft
630E1150	Straight Double Class B W Beam Guardrail with Wood Posts	100.0	Ft
630E1505	Type 2A Guardrail Transition	8	Each
630E2005	W Beam Guardrail to MGS Transition	8	Each
630E2018	MGS MASH Tangent End Terminal	16	Each
630E2300	Rubrail	65.6	Ft
633E1200	High Build Waterborne Pavement Marking Paint, White	686	Gal
633E1205	High Build Waterborne Pavement Marking Paint, Yellow	532	Gal
634E0010	Flagging	2,000.0	Hour
634E0020	Pilot Car	1,000.0	Hour
634E0110	Traffic Control Signs	1,396.1	SqFt
634E0120	Traffic Control, Miscellaneous	Lump Sum	LS
634E0630	Temporary Pavement Marking	60.9	Mile
700E0310	Class C Riprap	249.0	Ton
700E2010	Place Riprap	75.0	Ton
720E1010	PVC Coated Bank and Channel Protection Gabion	36.0	CuYd
734E0010	Erosion Control	Lump Sum	LS
734E0154	12" Diameter Erosion Control Wattle	520	Ft
831E0110	Type B Drainage Fabric	506	SqYd
831E0300	Reinforcement Fabric (MSE)	517	SqYd

BID ITEM NUMBER	ITEM	QUANTITY	UNIT
900E0010	Refurbish Single Mailbox	5	Each
900E0012	Refurbish Double Mailbox	1	Each

\* - Denotes Non-Participating

**Alternate A**

BID ITEM NUMBER	ITEM	QUANTITY	UNIT
320E0005	PG 58-34 Asphalt Binder	1,276.1	Ton
320E1202	CLASS Q2R HOT MIXED ASPHALT CONCRETE	28,093.3	Ton
320E4000	Hydrated Lime	279.5	Ton

**Alternate B**

BID ITEM NUMBER	ITEM	QUANTITY	UNIT
320E0005	PG 58-34 Asphalt Binder	1,061.6	Ton
320E1202	CLASS Q2R HOT MIXED ASPHALT CONCRETE	28,752.3	Ton
320E4000	Hydrated Lime	279.5	Ton

**SPECIFICATIONS**

Standard Specifications for Roads and Bridges, 2015 Edition and Required Provisions, Supplemental Specifications, and Special Provisions as included in the Proposal.

**ENVIRONMENTAL COMMITMENTS**

The SDDOT is committed to protecting the environment and uses Environmental Commitments as a communication tool for the Engineer and Contractor to ensure that attention is given to avoid, minimize, and/or mitigate an environmental impact. Environmental commitments to various agencies and the public have been made to secure approval of this project. An agency with permitting authority can delay a project if identified environmental impacts have not been adequately addressed. Unless otherwise designated, the Contractor's primary contact regarding matters associated with these commitments will be the Project Engineer. During construction, the Project Engineer will verify that the Contractor has met Environmental Commitment requirements. These environmental commitments are not subject to change without prior written approval from the SDDOT Environmental Office.

Additional guidance on SDDOT's Environmental Commitments can be accessed through the Environmental Procedures Manual found at: <https://dot.sd.gov/media/documents/EnvironmentalProceduresManual.pdf>

For questions regarding change orders in the field that may have an effect on an Environmental Commitment, the Project Engineer will contact the Environmental Engineer at 605-773-3180 or 605-773-4336 to determine whether an environmental analysis and/or resource agency coordination is necessary.

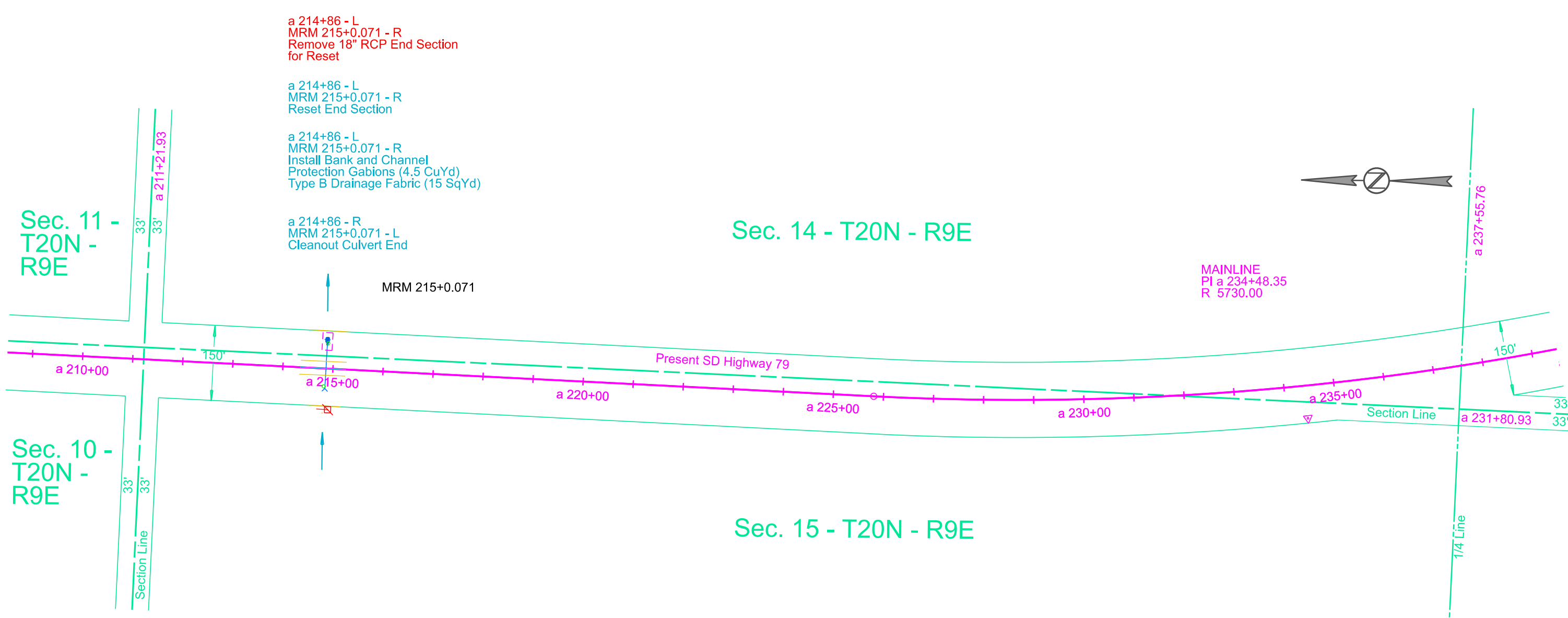
Once construction is complete, the Project Engineer will review all environmental commitments for the project and document their completion.



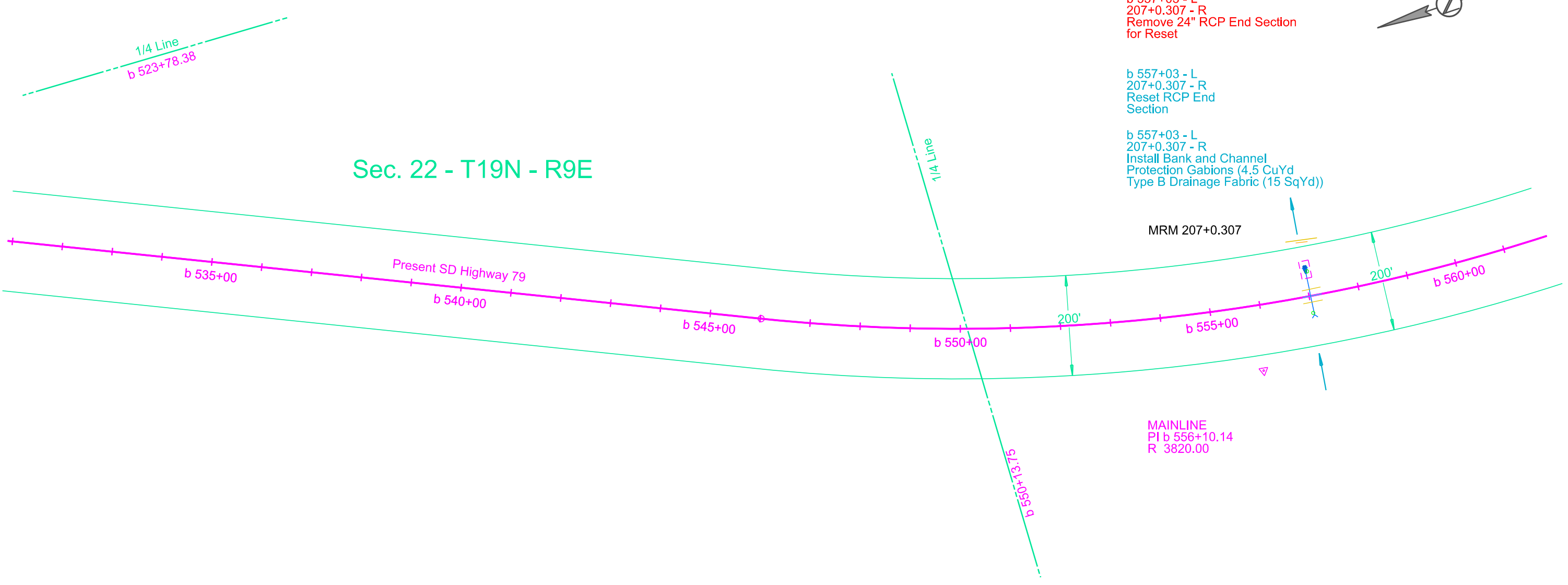
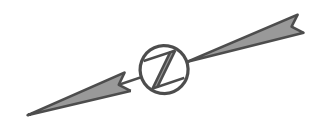
Revised 10/31/24 GDS

**Table of Pipe Work Quantities (Continued)**

MRM	Disp	84" RCP Flared End, Furnish (Each)	84" RCP Flared End, Install (Each)	H (Ft)	24" Cured in Place Pipe (Ft)	42" Cured in Place Pipe (Ft)	60" Cured in Place Pipe (Ft)	60" Cured in Place Arch Pipe (Ft)	PVC Coated Bank and Channel Protection Gabion (CuYd)	Salvage Riprap (Ton)	Class C Riprap (Ton)	Place Riprap (Ton)	Type B Drainage Fabric (SqYd)	Cleanout Pipe Culvert (Each)	Cleanout for Culvert Treatment (Each)	Contractor Furnished Borrow Excavation (CuYd)	12" Diameter Erosion Control Wattle (Ft)
203.75 + 0.021									4.5				15				
204 + 0.414																	20
204 + 0.963																	20
205 + 0.288									4.5				15				
205 + 0.801																	
206 + 0.092											154		172				20
206 + 0.158																	20
206 + 0.281																	20
206 + 0.577				14		115								1			20
207 + 0.307									4.5				15				20
207 + 0.942				8				112						2			20
208 + 0.069										30	30	30	78				
208 + 0.199																	20
208 + 0.596																	20
208 + 0.850				12.5			90								1		20
209 + 0.018				8	84										1		20
209 + 0.169				8	108										1		20
209 + 0.312																	20
209 + 0.446									6				19				
209 + 0.727									6				19				
209 + 0.957																	20
210 + 0.281																	20
211 + 0.292																	20
212 + 0.251																40	20
212 + 0.946																40	20
213 + 0.182											20		32				
213 + 0.742																20	20
215 + 0.071									4.5				15	1			
215 + 0.258									6				19				
216 + 0.270																30	20
216 + 0.467														1		20	20
217 + 0.068		2	2														20
217.65 + 0.062														1			20
217.65 + 0.213														1			20
219 + 0.046										45	45	45	107			40	20
<b>Total</b>		<b>2</b>	<b>2</b>		<b>192</b>	<b>115</b>	<b>90</b>	<b>112</b>	<b>36</b>	<b>75</b>	<b>249</b>	<b>75</b>	<b>506</b>	<b>4</b>	<b>6</b>	<b>190</b>	<b>520</b>



Sec. 22 - T19N - R9E





Sec. 34 - T19N - R9E

b 663+19 - L  
205+0.288 - R  
Remove 24" RCP End Section for  
Reset

b 663+19 - R  
205+0.288 - L  
Remove 24" RCP End Section for  
Reset

b 663+19 - L  
205+0.288 - R  
Reset End Section

b 663+19 - R  
205+0.288 - L  
Reset End Section

b 663+19 - L  
205+0.288 - R  
Install Bank and Channel  
Protection Gabions (4.5 CuYd)  
Type B Drainage Fabric (15 SqYd)

MRM 205+0.288

MAINLINE  
PI b 671+46.94  
R 2265.00

