



Planning & Engineering  
Office of Project Development  
700 E Broadway Avenue  
Pierre, South Dakota 57501-2586  
O: 605.773.3275 | F: 605.773.2614  
dot.sd.gov

January 13, 2026

**ADDENDUM NO. 1**

**RE: Item #2, January 21, 2026 Letting - P 0044(233)406, IM 0292(99)59, PCN 08GM, 09VC, Lincoln County - Cold Milling, Asphalt Concrete Resurfacing, Spot Grading, Structure (2-12x3 Precast RCBC), Lighting, Pipe Work**

**TO WHOM IT MAY CONCERN:**

The following addenda to the plans shall be inserted and made a part of your proposal for the referenced project.

**SPECIAL PROVISIONS:** NO CHANGE

**SDEBS BID PROPOSAL:** *The electronic bid proposal for this contract has been revised to include the changes associated with this addendum. Bidders must log in to the SDEBS to retrieve and incorporate these changes into their bid.*

**Bid Items were added:**

Bid Item 632E3003 "Aluminum Overlay Sign, Nonremovable Copy High Intensity"

**Quantities for Bid Items were changed:**

Bid Item 632E3203 "Flat Aluminum Sign, Nonremovable Copy High Intensity" changed from 390.9 to 336.9 SqFt

**PLANS:** Please destroy sheets 3, 4, 25, & 108-111 and replace with the enclosed sheets, dated 1/8/26.

**Sheet 3:** Bid Item 632E3003 "Aluminum Overlay Sign, Nonremovable Copy High Intensity" was added. Quantity for Bid Item 632E3203 "Flat Aluminum Sign, Nonremovable Copy High Intensity" changed from 390.9 to 336.9 SqFt and Bid item spacing was adjusted.

**Sheet 4:** Bid item spacing was adjusted.

**Sheet 25:** The last paragraph of the INSTALLATION OF OVERLAY notes were revised.

**Sheets 108-111:** SIGN INSTALLATION TABLE was revised.

Sincerely,

Sam Weisgram  
Engineering Supervisor

SW/gp

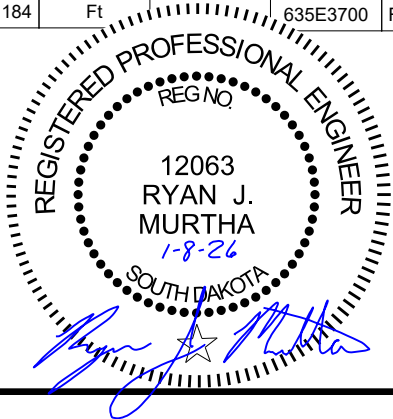
CC: Travis Dressen, Mitchell Region Engineer  
Harry Johnston, Sioux Falls Area Engineer

ESTIMATE OF QUANTITIES – PCN 08GM

BID ITEM NUMBER	ITEM	QUANTITY	UNIT
004E0030	Maintenance of Traffic Diversion(s)	Lump Sum	LS
004E0050	Remove Traffic Diversion(s)	Lump Sum	LS
009E0010	Mobilization	Lump Sum	LS
009E3220	Reestablish Right-of-Way and Property Corner	8	Each
009E3225	Reestablish Public Land Survey System Corner	1	Each
009E3230	Grade Staking	1.500	Mile
009E3245	Final Cross Section Survey	1.000	Mile
009E3250	Miscellaneous Staking	5.643	Mile
009E3280	Slope Staking	1.000	Mile
009E3290	Structure Staking	1	Each
009E3301	Engineer Directed Surveying/Staking	40.0	Hour
009E3320	Checker	Lump Sum	LS
009E4200	Construction Schedule, Category II	Lump Sum	LS
110E0100	Remove Concrete Footing(s)	Lump Sum	LS
110E0130	Remove Traffic Sign	58	Each
110E0135	Remove Delineator	28	Each
110E0300	Remove Concrete Curb and/or Gutter	139	Ft
110E0600	Remove Fence	6,194	Ft
110E0730	Remove Beam Guardrail	369.0	Ft
110E1010	Remove Asphalt Concrete Pavement	4,885.1	SqYd
110E1540	Remove Luminaire Pole Footing	4	Each
110E1690	Remove Sediment	1.0	CuYd
110E1693	Remove Erosion Control Wattle	50	Ft
110E1700	Remove Silt Fence	2,115	Ft
110E5100	Salvage Luminaire Pole	4	Each
110E5105	Salvage Luminaire	4	Each
110E7150	Remove Sign for Reset	11	Each
110E7500	Remove Pipe for Reset	83	Ft
110E7510	Remove Pipe End Section for Reset	3	Each
120E0010	Unclassified Excavation	43,233	CuYd
120E0100	Unclassified Excavation, Digouts	233	CuYd
120E0600	Contractor Furnished Borrow Excavation	28,313	CuYd
120E1000	Muck Excavation	843	CuYd
120E2000	Undercutting	21,467	CuYd
120E4100	Reprofiling Ditch	1.5	Sta
120E6100	Water for Embankment	534.0	MGal
120E6200	Water for Granular Material	248.4	MGal
230E0010	Placing Topsoil	6,163	CuYd
250E0020	Incidental Work, Grading	Lump Sum	LS
260E1010	Base Course	10,531.6	Ton
260E1030	Base Course, Salvaged	15,548.0	Ton
260E3010	Gravel Surfacing	1,059.3	Ton
260E3500	Temporary Gravel Surfacing	300.0	Ton

BID ITEM NUMBER	ITEM	QUANTITY	UNIT
260E6010	Granular Material	50.0	Ton
270E0040	Salvage and Stockpile Asphalt Mix and Granular Base Material	15,548.0	Ton
320E0032	PG 58H-34 Asphalt Binder	1,270.3	Ton
320E1200	Asphalt Concrete Composite	414.2	Ton
320E1203	CLASS Q3R HOT MIXED ASPHALT CONCRETE	24,533.1	Ton
320E1800	Asphalt Concrete Blade Laid	1,050.5	Ton
320E4000	Hydrated Lime	252.2	Ton
320E7012	Grind 12" Rumble Strip or Stripe in Asphalt Concrete	11.2	Mile
320E7028	Grind Centerline Rumble Stripe in Asphalt Concrete	1.5	Mile
320E7030	Grind Sinusoidal Centerline Rumble Stripe in Asphalt Concrete	3.1	Mile
320E7040	Grind 6" Transverse Rumble Strip in Asphalt Concrete	442.0	Ft
330E0010	MC-70 Asphalt for Prime	45.0	Ton
330E0100	SS-1h or CSS-1h Asphalt for Tack	85.0	Ton
330E0210	SS-1h or CSS-1h Asphalt for Flush Seal	4.7	Ton
330E1000	Blotting Sand for Prime	114.6	Ton
332E0010	Cold Milling Asphalt Concrete	96,644	SqYd
421E0100	Pipe Culvert Undercut	92	CuYd
450E0142	24" RCP Class 2, Furnish	154	Ft
450E0150	24" RCP, Install	154	Ft
450E0162	30" RCP Class 2, Furnish	222	Ft
450E0170	30" RCP, Install	222	Ft
450E2016	24" RCP Flared End, Furnish	1	Each
450E2017	24" RCP Flared End, Install	1	Each
450E2024	30" RCP Flared End, Furnish	2	Each
450E2025	30" RCP Flared End, Install	2	Each
450E2032	42" RCP Flared End, Furnish	2	Each
450E2033	42" RCP Flared End, Install	2	Each
450E2200	24" RCP Sloped End, Furnish	4	Each
450E2201	24" RCP Sloped End, Install	4	Each
450E2204	30" RCP Sloped End, Furnish	6	Each
450E2205	30" RCP Sloped End, Install	6	Each
450E3042	42" RCP Arch Class 2, Furnish	176	Ft
450E3050	42" RCP Arch, Install	176	Ft
450E4516	42" RCP Arch Flared End, Furnish	4	Each
450E4517	42" RCP Arch Flared End, Install	4	Each
450E4759	18" CMP 16 Gauge, Furnish	116	Ft
450E4760	18" CMP, Install	116	Ft
450E5406	18" CMP Safety End, Furnish	4	Each
450E5407	18" CMP Safety End, Install	4	Each
450E5509	18" CMP Arch 16 Gauge, Furnish	34	Ft
450E5510	18" CMP Arch, Install	34	Ft
450E5519	24" CMP Arch 16 Gauge, Furnish	184	Ft

BID ITEM NUMBER	ITEM	QUANTITY	UNIT
450E5520	24" CMP Arch, Install	184	Ft
450E6006	18" CMP Arch Safety End, Furnish	2	Each
450E6007	18" CMP Arch Safety End, Install	2	Each
450E6010	24" CMP Arch Safety End, Furnish	4	Each
450E6011	24" CMP Arch Safety End, Install	4	Each
450E9000	Reset Pipe	83	Ft
450E9001	Reset Pipe End Section	3	Each
451E6080	Adjust Water Valve Box	3	Each
464E0100	Controlled Density Fill	28.6	CuYd
600E0300	Type III Field Laboratory	1	Each
620E0020	Type 2 Right-of-Way Fence	6,194	Ft
620E0515	Type 1A Temporary Fence	310	Ft
620E1020	2 Post Panel	15	Each
620E1030	3 Post Panel	11	Each
630E0500	Type 1 MGS	100.0	Ft
630E1501	Type 1 Retrofit Guardrail Transition	4	Each
630E2017	MGS MASH Flared End Terminal	4	Each
632E1320	2.0"x2.0" Perforated Tube Post	451.6	Ft
632E1330	2.25"x2.25" Perforated Tube Post	194.6	Ft
632E1340	2.5"x2.5" Perforated Tube Post	140.5	Ft
632E2022	4"x4" White Delineator Back to Back with 1.12 Lb/Ft Post	56	Each
632E2028	4" Tubular White Delineator with 1.12 Lb/Ft Post	28	Each
632E2220	Guardrail Delineator	16	Each
632E2510	Type 2 Object Marker Back to Back	32	Each
632E3003	Aluminum Overlay Sign, Nonremovable Copy High Intensity	54.0	SqFt
632E3203	Flat Aluminum Sign, Nonremovable Copy High Intensity	336.9	SqFt
632E3205	Flat Aluminum Sign, Nonremovable Copy Super/Very High Intensity	134.0	SqFt
632E3500	Reset Sign	11	Each
633E1200	High Build Waterborne Pavement Marking Paint, White	279	Gal
633E1205	High Build Waterborne Pavement Marking Paint, Yellow	43	Gal
634E0010	Flagging	700.0	Hour
634E0020	Pilot Car	300.0	Hour
634E0110	Traffic Control Signs	1,471.3	SqFt
634E0120	Traffic Control, Miscellaneous	Lump Sum	LS
634E0275	Type 3 Barricade	20	Each
634E0630	Temporary Pavement Marking	23.2	Mile
634E0900	Portable Temporary Traffic Control Signal	4	Unit
634E1002	Detour and Restriction Signing	693.6	SqFt
634E1020	Temporary Business Signing	47.3	SqFt
634E1215	Contractor Furnished Portable Changeable Message Sign	2	Each
635E0050	Breakaway Base Luminaire Pole with Arm, 50' Mounting Height	27	Each
635E3700	Roadway Luminaire, LED with Photoelectric Cell	27	Each



**ESTIMATE OF QUANTITIES – PCN 08GM (CONTINUED)**

BID ITEM NUMBER	ITEM	QUANTITY	UNIT
635E5020	2' Diameter Footing	243.0	Ft
635E5301	Type 1 Electrical Junction Box	15	Each
635E5302	Type 2 Electrical Junction Box	1	Each
635E5400	Electrical Service Cabinet	2	Each
635E8120	2" Rigid Conduit, Schedule 40	4,880	Ft
635E8220	2" Rigid Conduit, Schedule 80	1,440	Ft
635E9014	1/C #4 AWG Copper Wire	24,740	Ft
635E9016	1/C #6 AWG Copper Wire	8,400	Ft
635E9018	1/C #8 AWG Copper Wire	5,095	Ft
635E9022	1/C #12 AWG Copper Wire	2,565	Ft
635E9710	2/C #10 AWG Copper Pole and Bracket Cable	1,755	Ft
680E2502	Crushed Rock	69.4	Ton
700E0110	Class A Riprap	145.9	Ton
730E0100	Cover Crop Seeding	1.0	Bu
730E0212	Type G Permanent Seed Mixture	300	Lb
731E0200	Fertilizing	8.60	Ton
732E0100	Mulching	26.2	Ton
732E0200	Fiber Mulching	6.0	Ton
734E0103	Type 3 Erosion Control Blanket	300	SqYd
734E0154	12" Diameter Erosion Control Wattle	200	Ft
734E0510	Shaping for Erosion Control Blanket	135	Ft
734E0602	Low Flow Silt Fence	2,044	Ft
734E0604	High Flow Silt Fence	774	Ft
734E0610	Mucking Silt Fence	147	CuYd
734E0620	Repair Silt Fence	529	Ft
831E0110	Type B Drainage Fabric	1,160	SqYd
831E1010	Geogrid Reinforcement	714	SqYd
900E0012	Refurbish Double Mailbox	1	Each
900E1320	Construction Entrance	1	Each
900E1980	Storage Unit	1	Each

**ESTIMATE OF QUANTITIES – STRUCTURE NUMBER 42-024-120**

BID ITEM NUMBER	ITEM	QUANTITY	UNIT
250E0010	Incidental Work	Lump Sum	LS
450E8300	Culvert Joint Cleaning	96.0	Ft
450E8305	Repair Culvert Joint	96.0	Ft

**ESTIMATE OF QUANTITIES – STRUCTURE NUMBER 42-035-120**

BID ITEM NUMBER	ITEM	QUANTITY	UNIT
250E0010	Incidental Work	Lump Sum	LS
450E8300	Culvert Joint Cleaning	43.0	Ft
450E8305	Repair Culvert Joint	43.0	Ft

**ESTIMATE OF QUANTITIES – STRUCTURE NUMBER 42-049-120**

BID ITEM NUMBER	ITEM	QUANTITY	UNIT
420E0200	Structure Excavation, Box Culvert	66	CuYd
421E0200	Box Culvert Undercut	223	CuYd
560E2160	2-12'x3' Precast Concrete Box Culvert, Furnish	80.0	Ft
560e2161	2-12'x3' Precast Concrete Box Culvert, Install	80.0	Ft
560E3160	2-12'x3' Precast Concrete Box Culvert End Section, Furnish	2	Each
560E3161	2-12'x' Precast Concrete Box Culvert End Section, Install	2	Each
700E0110	Class A Riprap	43.1	Ton
831E0110	Type B Drainage Fabric	63	SqYd

**ESTIMATE OF QUANTITIES – PCN 09VC**

BID ITEM NUMBER	ITEM	QUANTITY	UNIT
009E0010	Mobilization	Lump Sum	LS
009E4200	Construction Schedule, Category II	Lump Sum	LS
110E1010	Remove Asphalt Concrete Pavement	42.0	SqYd
120E0100	Unclassified Excavation, Digouts	28	CuYd
120E6200	Water for Granular Material	0.5	MGal
260E1010	Base Course	56.0	Ton
320E0032	PG 58H-34 Asphalt Binder	47.1	Ton
320E1200	Asphalt Concrete Composite	14.0	Ton
320E1203	CLASS Q3R HOT MIXED ASPHALT CONCRETE	777.8	Ton
320E1800	Asphalt Concrete Blade Laid	125.6	Ton
320E4000	Hydrated Lime	9.0	Ton
330E0100	SS-1h or CSS-1h Asphalt for Tack	5.8	Ton
332E0010	Cold Milling Asphalt Concrete	6,714	SqYd
633E1220	High Build Waterborne Pavement Marking Paint, 4" White	3,078	Ft
633E1222	High Build Waterborne Pavement Marking Paint, 4" Yellow	2,980	Ft
634E0110	Traffic Control Signs	310.0	SqFt
634E0120	Traffic Control, Miscellaneous	Lump Sum	LS
634E0275	Type 3 Barricade	4	Each

**ENVIRONMENTAL COMMITMENTS**

The SDDOT is committed to protecting the environment and uses Environmental Commitments as a communication tool for the Engineer and Contractor to ensure that attention is given to avoid, minimize, and/or mitigate an environmental impact. Environmental commitments to various agencies and the 4public have been made to secure approval of this project. An agency with permitting authority can delay a project if identified environmental impacts have not been adequately addressed. Unless otherwise designated, the Contractor's primary contact regarding matters associated with these commitments will be the Project Engineer. During construction, the Project Engineer will verify that the Contractor has met Environmental Commitment requirements. These environmental commitments are not subject to change without prior written approval from the SDDOT Environmental Office.

Additional guidance on SDDOT's Environmental Commitments can be accessed through the Environmental Procedures Manual found at: <<https://dot.sd.gov/media/documents/EnvironmentalProceduresManual.pdf>>

For questions regarding change orders in the field that may have an effect on an Environmental Commitment, the Project Engineer will contact the Environmental Engineer at 605-773-3180 or 605-773-4336 to determine whether an environmental analysis and/or resource agency coordination is necessary.

Once construction is complete, the Project Engineer will review all environmental commitments for the project and document their completion.



DIGITALLY PRINTED SIGNS (CONTINUED)

CERTIFIED DIGITAL SIGN FABRICATOR

Sign fabricators using digital imaging methods to produce regulated traffic signs must be certified by the reflective sheeting manufacturer whose materials are used to produce the delivered signs.

DATE TAGGING SIGNS WITH PERTINENT INFORMATION

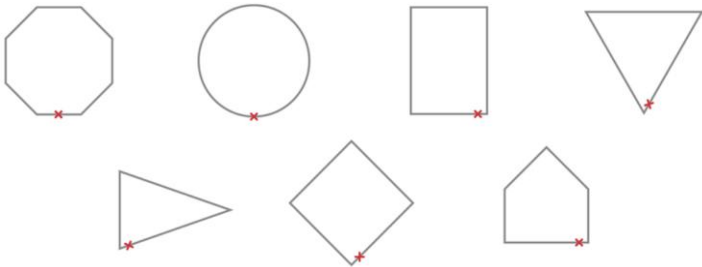
All digitally printed signs are required to be date-tagged with the following 2 components:

1. Date tags on the back of signs
- Tags will have the following information and be fabricated with material and printing system that are as durable as the warranted sign.
- Name of Sign Fabricator

Date the sign was fabricated (month and year)

Process that was used for sign fabrication (digitally printed)

Supplier of sheeting that was used for fabricating the sign.
2. Border date
- The month and year (mm/yyyy) of sign fabrication will be printed in the border of the sign in 3/8" sans serif font. Border date will be printed with the same warranted printed system as the sign face. The date should be printed in the locations indicated below.



SQUARE TUBE ANCHOR SLEEVE

The Contractor will furnish and install new 2.5" x 2.5" x 18", 12 Gauge square tube anchor sleeve or equivalent components as approved by the Engineer for 2.0" x 2.0" perforated tube posts. A 2.25" x 2.25" x 4', 12 Gauge perforated tube post will be used as the anchor post for installation with the square tube anchor sleeve.

SQUARE TUBE POST SLEEVE

All 2.5" x 2.5", 10 Gauge perforated tube post will be sleeved with a 2-3/16" x 2-3/16" x 4', 10 Gauge perforated tube post.

WINGED SLIP BASE ANCHOR

The Contractor will furnish and install new winged slip base anchors for 2.5" x 2.5" perforated tube posts as required in the Permanent Signing Table. Winged slip base anchors will be installed using the direct drive method. Winged slip base anchors will consist of a slip base (upper), a 48-inch long winged anchor (lower), and a hardware kit.

INSTALLATION OF OVERLAY

Some of the in place extruded aluminum panels have been previously overlaid. Any rivets and overlay pieces remaining from previous overlays will be removed.

Excess amounts of dirt or other foreign material will be removed from the surface of the extruded aluminum panels. Any surface irregularities (bullet holes) will be repaired prior to the installation of the new overlay.

The new overlays will be installed on the in place extruded aluminum panels. The overlay sections will be fabricated as to minimize the number of seams.

Overlays will be attached to the extruded aluminum panels beginning with the pieces along the top of the sign. Fastening will proceed from the top of the overlay downward working out any bulges.

Fasteners will be aluminum rivets 5/32" in diameter. Rivets will be placed at 9" +/- 1" centers along the horizontal and vertical seams. Rivets will be placed ¼" to ½" from the edges of the overlay pieces. Adjoining overlays will be butted tightly together before fastening begins. In addition to the perimeter rivets, fasteners are required inside the overlay spaced approximately 1' vertically and 2' horizontally from the overlay piece edges.

Prior to installing overlays, all in place extruded aluminum panels will be level and edges plumb. Post clips on the back of the sign will be tightened to the post.

All costs for leveling, plumbing and tightening will be incidental to the contract unit price per square foot for "Aluminum Overlay, Nonremovable Copy High Intensity".

MILEAGE REFERENCE MARKERS

Mileage Reference Markers (MRMs) are not to be disturbed. If an MRM is attached to a sign listed for replacement it will be salvaged and reattached to the new sign in the same location. Payment for this work will be incidental to the various signing contract items.

DELINEATION TABLES

4"x4" White Delineator Back to Back with 1.12 Lb/Ft Post 632E2022			
HWY	STATION	SPACING	QUANTITY
SD 44	0+12 to 52+93	528 #	10
SD 44	Ah 0+00 to Ah 245+14	528 #	46
# - Alternating		TOTAL	56

4" Tubular White Delineator with 1.12 Lb/Ft Post 632E2028			
HWY	STATION	INTERSECTING ROUTE	QUANTITY
SD 44	52+93	SD 44 & 466th Ave	16
SD 44	Ah 158+25	SD 44 & 469th Ave	12
TOTAL			28

STATE OF SOUTH DAKOTA	PROJECT	SHEET	TOTAL SHEETS
	P 0044(233)406 IM 0292(99)59	25	194

Plotting Date: 11/5/2025 Rev 1/8/2026 RJM





Sign InstallationTable

STATE OF SOUTH DAKOTA	PROJECT	SHEET	TOTAL SHEETS
	P 0044(233)406 IM 0292(99)59		
Plotting Date:		11/5/2025	Rev 1/8/2026 RJM

SIGN DATA											POST DATA						
STATION	DESCRIPTION	SIGN CODE	SIGN SIZE (Ft)	SIGN AREA (SqFt)			OFFSET* (R)IGHT/ (L)EFT	SIGN FACES	COMMENTS	POST LENGTHS <span style="color:red">X</span>		BREAK-AWAY #	SIZE/QUANTITY {Ft}				
				Type IV	TYPE XI	OVERLAY				INSIDE	OUTSIDE		2.0"x2.0" TUBE	2.25"x2.25" TUBE	2.5"x2.5" TUBE		
			SD 44 EB							632E3203	632E3205	632E3003					
1+06 R	STOP MRM 407.31	R1-1 D10-2	4.0 X 4.0 0.375 X 1.75		13.3		12' R	WEST	INSTALL NEW SIGN ON NEW POST	12.8'		A			12.8		
1+26 L	EAST 44 →	M3-2 M1-5 M6-1	2.0 X 1.0 2.0 X 2.0 1.75 X 1.25	2.0 4.0 2.18			16' L	WEST	INSTALL NEW SIGN ON NEW POST	13.8'		A		13.8			
	2+14 R	EAST 44	M3-2 M1-5	2.0 X 1.0 2.0 X 2.0	2.0 4.0		16' R	NORTH	INSTALL NEW SIGN ON NEW POST	12.8'		A	12.8				
	6+72 R	STOP Street Signs	R1-1 Street	2.5 X 2.5 2.5 X 0.5		5.2	12' R	EAST	INSTALL NEW SIGN ON NEW POST INSTALL EXISTING STREET SIGNS ON SAME POST	13.0		A		13.0			
12+72 R	STOP Street Signs	R1-1 Street	2.5 X 2.5 3.0 X 0.5		5.2		12' R	EAST	INSTALL NEW SIGN ON NEW POST INSTALL EXISTING STREET SIGNS ON SAME POST	13.0		A		13.0			
15+37 R	SPEED LIMIT 65	R2-1	2.0 X 2.5	5.0			16' R	NORTH	INSTALL NEW SIGN ON NEW POST	12'		A	12.0				
41+08 L	NO PASSING ZONE	W14-3	4.0 X 4.0 X 3.0		5.6		16' L	NORTH	INSTALL NEW SIGN ON NEW POST	12.6'		A	12.6				
45+00 R	EAST 44 ↵	M3-2 M1-5	2.0 X 1.0 2.0 X 2.0 1.75 X 1.25	2.0 4.0 2.18			16' R	NORTH	INSTALL NEW SIGN ON NEW POST	13.8'		A		13.8			
47+00 R	↵ TO 29 5 ↵ Worthing 6	SPECIAL	7.0 X 2.5	17.5			16' R	NORTH	INSTALL NEW SIGN ON NEW POST	11.6' 12.6'		A		24.2			
49+00 R	LINCOL COUNTY 124 →	COUNTY	1.5 X 2.0				16' R	NORTH	RESET EXISTING SIGN ON NEW POST	12.3'		A	12.3				
51+75 R	EAST 44 ↵	M3-2 M1-5 M6-1	2.0 X 1.0 2.0 X 2.0 1.75 X 1.25	2.0 4.0 2.18			16' R	NORTH	INSTALL NEW SIGN ON NEW POST	13.8'		A		13.8			
	3+50 R	OFF ROAD VEHICLES PROHIBITED IN DITCH	R5-7B	1.5 X 3.0	4.5		16' R	WEST	INSTALL NEW SIGN ON NEW POST	12.8'		A	12.8				
	54+90 R	OFF ROAD VEHICLES PROHIBITED IN DITCH	R5-7B	1.5 X 3.0	4.5		16' R	WEST	INSTALL NEW SIGN ON NEW POST	12.8'		A	12.8				
108+90 R	OFF ROAD VEHICLES PROHIBITED IN DITCH	R5-7B	1.5 X 3.0	4.5			16' R	WEST	INSTALL NEW SIGN ON NEW POST	12.8'		A	12.8				
151+13 R	LINCOL COUNTY 111 ↔	COUNTY	1.5 X 2.0				16' R	NORTH	RESET EXISTING SIGN ON NEW POST	12.3'		A	12.3				
153+18 R	↵ Tea 8	SPECIAL	5.0 X 1.5	7.5			16' R	WEST	INSTALL NEW SIGN ON NEW POST	9.0'		A	9.0				
TOTALS THIS SHEET				74.7	29.3	0.0									109.4	91.6	12.8

\* - distance from back of curb to edge of sign X -Plan post lengths are estimates. The post lengths shall be field verified by the Contractor.

# - (S)lip Base on winged (A)nchor

Sign InstallationTable

SIGN DATA										POST DATA							
STATION	DESCRIPTION	SIGN CODE	SIGN SIZE (Ft)	SIGN AREA (SqFt)			OFFSET* (R)IGHT/ (L)EFT	SIGN FACES	COMMENTS	POST LENGTHS <span>⚠</span>		BREAK-AWAY #	SIZE/QUANTITY {Ft}				
				Type IV	TYPE XI	OVERLAY				INSIDE	OUTSIDE		2.0"x2.0" TUBE	2.25"x2.25" TUBE	2.5"x2.5" TUBE		
SD 44 EB				632E3203	632E3205	632E3003							632E1320	632E1330	632E1340		
163+58 R	OFF ROAD VEHICLES PROHIBITED IN DITCH	R5-7B	1.5 X 3.0	4.5			16' R	WEST	INSTALL NEW SIGN ON NEW POST	12.8'		A	12.8				
214+74 R	↑ SPEED LIMIT 40	W3-5	3.0 X 3.0		9.0		16' R	WEST	INSTALL NEW SIGN ON NEW POST	13.3'		A		13.3			
221+37 R	SPEED LIMIT 40	R2-1	2.0 X 2.5	5.0			16' R	WEST	INSTALL NEW SIGN ON NEW POST	12'		A	12.0				
227+41 R	JCT 29	M2-1 M1-1	2.0 X 1.0 2.0 X 2.0	2.0 4.0			16' R	WEST	INSTALL NEW SIGN ON NEW POST	12.8'		A	12.8				
230+37 R	↑ Worthing ↑ Sioux Falls Sioux City →	SPECIAL	9.0 X 5.0	45.0			16' R	WEST	INSTALL NEW SIGN ON NEW POST	14.0'	15.6'	A			29.6		
233+43 R	END SOUTH 44 29 →	M4-6 & M3-3 M1-5 & M1-1 M6-1	4.0 X 1.0 4.0 X 2.0 1.75 X 1.25	2.0 4.0 2.18			16' R	WEST	INSTALL NEW SIGN ON NEW POST	13.8'		A			13.8		
235+99 R	↑ Worthing ← Sioux Falls	SPECIAL	9.0 X 3.0			27.0	16' R	WEST	INSTALL NEW OVERLAY USE EXISTING PANELS & SUPPORTS								
239+00 R	NORTH 29 ←	M3-1 M1-1 M6-1	2.0 X 1.0 2.0 X 2.0 1.75 X 1.25	2.0 4.0 2.18			16' R	WEST	INSTALL NEW SIGN ON NEW POST	13.8'		A		13.8			
SD 44 WB																	
243+33 L	↑ Lennox ↑ Sioux City Sioux Falls →	SPECIAL	9.0 X 5.0	45.0			16' L	EAST	INSTALL NEW SIGN ON NEW POST	14.0'	15.6'	A			29.6		
245+55 L	WEST NORTH 44 29 ↑ →	M3-4 & M3-1 M1-5 & M1-1 M6-3 & M6-1	4.0 X 1.0 4.0 X 2.0 3.5 X 1.25	4.0 8.0 4.38			16' L	EAST	INSTALL NEW SIGN ON NEW POST	13.8'		A			13.8		
238+98 L	↑ Lennox ←Sioux City	SPECIAL	9.0 X 3.0			27.0	16' L	EAST	INSTALL NEW OVERLAY USE EXISTING PANELS & SUPPORTS								
235+95 L	SOUTH WEST 29 44 ←	M3-3 & M3-4 M1-1 & M1-5 M6-1	4.0 X 1.0 4.0 X 2.0 1.75 X 1.25	4.0 8.0 4.38			16' L	EAST	INSTALL NEW SIGN ON NEW POST	13.8'		A			13.8		
TOTALS THIS SHEET				154.6	9.0	54.0									37.6	27.1	100.6

\* - distance from back of curb to edge of sign  
# - (S)lip Base on winged (A)nchor


⚠ -Plan post lengths are estimates. The post lengths shall be field verified by the Contractor.

SHEET 2 OF 4

Sign InstallationTable

STATE OF SOUTH DAKOTA	PROJECT	SHEET	TOTAL SHEETS
	P 0044(233)406 IM 0292(99)59	110	194

Plotting Date: 11/5/2025 Rev 1/8/2026 RJM

SIGN DATA									POST DATA						
STATION	DESCRIPTION	SIGN CODE	SIGN SIZE (Ft)	SIGN AREA (SqFt)			OFFSET* (R)IGHT/ (L)EFT	SIGN FACES	COMMENTS	POST LENGTHS 		BREAK-AWAY #	SIZE/QUANTITY {Ft}		
				Type IV	TYPE XI	OVERLAY				INSIDE	OUTSIDE		2.0"x2.0"	2.25"x2.25"	2.5"x2.5"
													TUBE	TUBE	TUBE
SD 44 WB				632E3203	632E3205	632E3003							632E 320	632E 330	632E 340
230+34 L	WEST 44	M3-4 M1-5	2.0 X 1.0 2.0 X 2.0	2.0 4.0			16' L	EAST	INSTALL NEW SIGN ON NEW POST	12.8'		A	12.8		
255+87 L	Lennox 5	SPECIAL	6.0 X 1.5	9.0			16' L	EAST	INSTALL NEW SIGN ON NEW POST	10.8'		A		10.8	
221+36 L	SPEED LIMIT 65	R2-1	2.0 X 2.5	5.0			16' L	EAST	INSTALL NEW SIGN ON NEW POST	12'		A	12.0		
165+55 L	LINCOL COUNTY 111 ↔	COUNTY	1.5 X 2.0				16' R	NORTH	RESET EXISTING SIGN ON NEW POST	12.3'		A	12.3		
163+55 L	Tea 8 →	SPECIAL	5.0 X 1.5				16' L	EAST	INSTALL NEW SIGN ON NEW POST	9.0'		A	9.0		
156+00 L	WEST 44	M3-4 M1-5	2.0 X 1.0 2.0 X 2.0	2.0 4.0			16' L	EAST	INSTALL NEW SIGN ON NEW POST	12.8'		A	12.8		
154+00 L	OFF ROAD VEHICLES PROHIBITED IN DITCH	R5-7B	1.5 X 3.0	4.5			16' L	EAST	INSTALL NEW SIGN ON NEW POST	12.8'		A	12.8		
102+61 L	OFF ROAD VEHICLES PROHIBITED IN DITCH	R5-7B	1.5 X 3.0	4.5			16' L	EAST	INSTALL NEW SIGN ON NEW POST	12.8'		A	12.8		
50+03 L	OFF ROAD VEHICLES PROHIBITED IN DITCH	R5-7B	1.5 X 3.0	4.5			16' L	EAST	INSTALL NEW SIGN ON NEW POST	12.8'		A	12.8		
10+53 L	LINCOL COUNTY 124 ↔	COUNTY	1.5 X 2.0				16' L	EAST	RESET EXISTING SIGN ON NEW POST	12.3'		A	12.3		
8+73 L	STOP AHEAD (SYM)	W3-1A	4.0 X 4.0		16.0		16' L	EAST	INSTALL NEW SIGN ON NEW POST	14.3'		A			14.3
8+21 R	NO PASSING ZONE	W14-3	4.0 X ## X 3.0		5.6		16' R	EAST	INSTALL NEW SIGN ON NEW POST	12.6'		A	12.6		
5+90 L	Lennox →	SPECIAL	6.0 X 1.5	9.0			16' L	EAST	INSTALL NEW SIGN ON NEW POST	10.8'		A		10.8	
3+32 L	WEST 44 →	M3-4 M1-5 M5-1R	2.0 X 1.0 2.0 X 2.0 1.75 X 1.25	2.0 4.0 2.18			16' L	EAST	INSTALL NEW SIGN ON NEW POST	13.8'		A		13.8	
0+82 L	STOP	R1-1	4.0 X 4.0		13.3		12' L	EAST	INSTALL NEW SIGN ON NEW POST	12.8'		A			12.8
52+70 R	44 →	M1-5 M6-1	2.0 X 2.0 1.75 X 1.25	2.0 4.0			16' R	SOUTH	INSTALL NEW SIGN ON NEW POST	12.8'		A	12.8		
52+20 L	WEST 44	M3-4 M1-5	2.0 X 1.0 2.0 X 2.0	2.0 4.0			16' L	SOUTH	INSTALL NEW SIGN ON NEW POST	12.8'		A	12.8		
43+15 L	911 sign	911	2.0 X 0.50					EAST	RESET EXISTING SIGN ON EXISTING POST						
42+60 L	911 sign	911	2.0 X 0.50					EAST	RESET EXISTING SIGN ON EXISTING POST						
TOTALS THIS SHEET				68.7	34.9	0.0							147.8	24.6	27.1


\* - distance from back of curb to edge of sign  
# - (S)lip Base on winged (A)nchor

⚠ -Plan post lengths are estimates. The post lengths shall be field verified by the Contractor.

SHEET 3 OF 4



Sign InstallationTable

SIGN DATA										POST DATA					
STATION	DESCRIPTION	SIGN CODE	SIGN SIZE (Ft)	SIGN AREA (SqFt)			OFFSET* (R)IGHT/ (L)EFT	SIGN FACES	COMMENTS	POST LENGTHS 		BREAK-AWAY #	SIZE/QUANTITY {Ft}		
				Type IV	TYPE XI	OVERLAY				INSIDE	OUTSIDE		2.0"x2.0" TUBE	2.25"x2.25" TUBE	2.5"x2.5" TUBE
			SD 44 WB			632E3203				632E3205	632E3003				
26+14 L	↑ SPEED LIMIT 45	W3-5	3.0 X 3.0		9.0		16' L	SOUTH	INSTALL NEW SIGN ON NEW POST	13.3'		A		13.3	
21+18 L	DYNAMIC ENGINE BRAKING PROHIBITED	R5-7B	2.5 X 3.0	7.5			16' L	SOUTH	INSTALL NEW SIGN ON NEW POST	12.6'		A		12.6	
18+44 L	Lennox Pop 2111	SPECIAL	6.0 X 2.0	12.0			16' L	SOUTH	INSTALL NEW SIGN ON NEW POST	11.6'		A		11.6	
17+78 R	NO PASSING ZONE	W14-3	4.0 X ## X 3.0		5.6		16' R	SOUTH	INSTALL NEW SIGN ON NEW POST	12.6'		A	12.6		
15+42 L	SPEED LIMIT 45	R2-1	2.0 X 2.5	5.0			16' L	SOUTH	INSTALL NEW SIGN ON NEW POST	12'		A	12.0		
14+27 L	44	M1-5	2.0 X 2.0	4.0			16' L	SOUTH	INSTALL NEW SIGN ON NEW POST	12.8'	A	12.8			
	←	M5-1L	1.75 X 1.25	2.18											
6+85 L	911 sign	911	2.0 X 0.50					EAST	RESET EXISTING SIGN ON EXISTING POST						
6+14 L	↑ TO 42 14 ← Chancellor 6	SPECIAL	6.0 X 2.5				16' L	SOUTH	RESET EXISTING SIGN INSTALLED ON 3/20/25 ON NEW POSTS	11.6'	12.0'	A	23.6		
1+80 L	WEST	M3-4	2.0 X 1.0	2.0			16' L	SOUTH	INSTALL NEW SIGN ON NEW POST	13.8'	A		13.8		
	44	M1-5	2.0 X 2.0	4.0											
	←	M6-1	1.75 X 1.25	2.18											
467TH AVE															
52+20 L	STOP	R1-1	2.5 X 2.5		5.2		12' L	NORTH	INSTALL NEW SIGN ON NEW POST	11.8'		A	11.8		
52+57 R	STOP	R1-1	2.5 X 2.5		5.2		12' R	SOUTH	INSTALL NEW SIGN ON NEW POST	11.8'		A	11.8		
468TH AVE															
105+52 L	STOP	R1-1	2.5 X 2.5		5.2		12' L	NORTH	INSTALL NEW SIGN ON NEW POST	11.8'		A	11.8		
105+82 R	STOP	R1-1	2.5 X 2.5		5.2		12' R	SOUTH	INSTALL NEW SIGN ON NEW POST	11.8'		A	11.8		
469TH AVE															
158+12 L	STOP	R1-1	3.0 X 3.0		7.5		12' L	NORTH	INSTALL NEW SIGN ON NEW POST	12.5'		A	12.5		
158+58 R	STOP	R1-1	3.0 X 3.0		7.5		12' R	SOUTH	INSTALL NEW SIGN ON NEW POST	12.5'		A	12.5		
470TH AVE															
210+85 L	STOP	R1-1	2.5 X 2.5		5.2		12' L	NORTH	INSTALL NEW SIGN ON NEW POST	11.8'		A	11.8		
21+24 R	STOP	R1-1	2.5 X 2.5		5.2		12' R	SOUTH	INSTALL NEW SIGN ON NEW POST	11.8'		A	11.8		
TOTALS THIS SHEET				38.9	60.8	0.0							156.8	51.3	0.0
PROJECT TOTALS				336.9	134.0	54.0							451.6	194.6	140.5

\* - distance from back of curb to edge of sign  
# - (S)lip Base on winged (A)nchor

X -Plan post lengths are estimates. The post lengths shall be field verified by the Contractor.

SHEET 4 OF 4