

May 29, 2026

ADDENDUM NO. 1

RE: Item #1, June 3, 2026 Letting - P TAPU(47), PCN 09QH, Pennington County - Grading, PCC Sidewalk & Culverts

TO WHOM IT MAY CONCERN:

The following addenda to the plans shall be inserted and made a part of your proposal for the referenced project.

SPECIAL PROVISIONS: NO CHANGE

SDEBS BID PROPOSAL: *The electronic bid proposal for this contract has been revised to include the changes associated with this addendum. Bidders must log in to the SDEBS to retrieve and incorporate these changes into their bid.*

Bid Items were added:

Bid Item 320E1200 "Asphalt Concrete Composite"
Bid Item 633E0030 "Cold Applied Plastic Pavement Marking, 24"
Bid Item 633E0062 "Cold Applied Pavement Marking, Symbol"
Bid Item 633E5015 "Grooving for Cold Applied Plastic Pavement Marking, 24"
Bid Item 633E5037 "Grooving for Cold Applied Plastic Pavement Marking, Symbol"
Bid Item 734E5010 "Sweeping"

Quantities for Bid Items were changed:

Bid Item 110E7150 "Remove Sign for Reset" changed from 6 to 7 Each
Bid Item 110E7510 "Remove Pipe End Section for Reset" changed from 2 to 1 Each
Bid Item 120E0010 "Unclassified Excavation" changed from 398 to 508 CuYd
Bid Item 260E2010 "Gravel Cushion" changed from 277.0 to 343.0 Ton
Bid Item 450E4759 "18" CMP 16 Gauge, Furnish" changed from 60 to 58 Ft
Bid Item 450E4760 "18" CMP, Install" changed from 60 to 58 Ft
Bid Item 450E5211 "18" CMP Flared End, Furnish" changed from 6 to 5 Each
Bid Item 450E5212 "18" CMP Flared End, Install" changed from 6 to 5 Each
Bid Item 632E1320 "2.0"x2.0" Perforated Tube Post" changed from 56 to 44 Ft

Bid Items were removed:

Bid Item 633E3030 "Durable Pavement Marking, 24" White"
Bid Item 633E3065 "Durable Pavement Marking, Symbol"
Bid Item 633E5051 "Surface Preparation for Pavement Marking"

PLANS: Please destroy sheets 2, 5, 7, 9, 10, 28, 47-49 & 50 and replace with the enclosed sheets, dated 5/28/26.

Sheet 2: Bid Items were added:

Bid Item 320E1200 "Asphalt Concrete Composite"

Bid Item 633E0030 "Cold Applied Plastic Pavement Marking, 24"

Bid Item 633E0062 "Cold Applied Pavement Marking, Symbol"

Bid Item 633E5015 "Grooving for Cold Applied Plastic Pavement Marking, 24"

Bid Item 633E5037 "Grooving for Cold Applied Plastic Pavement Marking, Symbol"

Bid Item 734E5010 "Sweeping"

Quantities for Bid Items were changed:

Bid Item 110E7150 "Remove Sign for Reset" changed from 6 to 7 Each

Bid Item 110E7510 "Remove Pipe End Section for Reset" changed from 2 to 1 Each

Bid Item 120E0010 "Unclassified Excavation" changed from 398 to 508 CuYd

Bid Item 260E2010 "Gravel Cushion" changed from 277.0 to 343.0 Ton

Bid Item 450E4759 "18" CMP 16 Gauge, Furnish" changed from 60 to 58 Ft

Bid Item 450E4760 "18" CMP, Install" changed from 60 to 58 Ft

Bid Item 450E5211 "18" CMP Flared End, Furnish" changed from 6 to 5 Each

Bid Item 450E5212 "18" CMP Flared End, Install" changed from 6 to 5 Each

Bid Item 632E1320 "2.0"x2.0" Perforated Tube Post" changed from 56 to 44 Ft

Bid Items were removed:

Bid Item 633E3030 "Durable Pavement Marking, 24" White"

Bid Item 633E3065 "Durable Pavement Marking, Symbol"

Bid Item 633E5051 "Surface Preparation for Pavement Marking"

Sheet 5: ASPHALT CONCRETE COMPOSITE note was added.

Sheet 7: SURFACE PREPARATION FOR PAVEMENT MARKING notes were removed.
COLD APPLIED PLASTIC PAVEMENT MARKING and GROOVING FOR COLD APPLIED PLASTIC PAVEMENT MARKING notes were added.

Sheet 9: FERTILIZING note was revised.

Sheet 10: SIGN QUANTITIES table was revised.

Sheet 28: Area Drain callout was revised.

Sheets 47-49: QUANTITIES THIS SHEET notes were revised.

Sheet 50: 12" AREA DRAIN details for CULVERT WITH STANDARD END SECTION RIPRAP were removed.

Sincerely,

Sam Weisgram
Engineering Supervisor

SW/gp

CC: Todd Seaman, Rapid City Region Engineer
Mike Carlson, Rapid City Area Engineer

ESTIMATE OF QUANTITIES

Revised 5/28/2026



PROJECT	SHEET	TOTAL SHEETS
P TAPU(47)	2	112

Non-Section Method

BID ITEM NUMBER	ITEM	QUANTITY	UNIT
009E0010	Mobilization	Lump Sum	LS
009E4100	Construction Schedule, Category I	Lump Sum	LS
100E0100	Clearing	Lump Sum	LS
110E0300	Remove Concrete Curb and/or Gutter	153	Ft
110E0500	Remove Pipe Culvert	10	Ft
110E1010	Remove Asphalt Concrete Pavement	16.0	SqYd
110E1100	Remove Concrete Pavement	19.0	SqYd
110E1140	Remove Concrete Sidewalk	84.0	SqYd
110E1640	Remove Granular Material	2.0	CuYd
110E7150	Remove Sign for Reset	7	Each
110E7510	Remove Pipe End Section for Reset	1	Each
120E0010	Unclassified Excavation	508	CuYd
120E0600	Contractor Furnished Borrow	90	CuYd
120E2000	Undercutting	277	CuYd
230E0010	Placing Topsoil	135	CuYd
260E1010	Base Course	14.0	Ton
260E2010	Gravel Cushion	343.0	Ton
320E1200	Asphalt Concrete Composite	10.0	Ton
380E3025	6" Reinforced PCC Driveway Pavement	18.0	SqYd
380E4010	6" PCC Fillet Section	19.0	SqYd
450E0122	18" RCP Class 2, Furnish	28	Ft
450E0130	18" RCP, Install	28	Ft
450E2008	18" RCP Flared End, Furnish	1	Each
450E2009	18" RCP Flared End, Install	1	Each
450E4759	18" CMP 16 Gauge, Furnish	58	Ft
450E4760	18" CMP, Install	58	Ft
450E5211	18" CMP Flared End, Furnish	5	Each
450E5212	18" CMP Flared End, Install	5	Each
450E9001	Reset Pipe End Section	2	Each
451E0522	12" PVC Pipe	21	Ft
451E6080	Adjust Water Valve Box	9	Each
632E1320	2.0"x2.0" Perforated Tube Post	44.0	Ft
632E3205	Flat Aluminum Sign, Nonremovable Copy Super/Very High Intensity	36.0	SqFt
632E3500	Reset Sign	7	Each
633E0030	Cold Applied Plastic Pavement Marking, 24"	187	Ft
633E0062	Cold Applied Plastic Pavement Marking, Symbol	16	Each
633E5015	Grooving for Cold Applied Plastic Pavement Marking, 24"	187	Ft
633E5037	Grooving for Cold Applied Plastic Pavement Marking, Symbol	16	Each
634E0110	Traffic Control Signs	272.0	SqFt
634E0120	Traffic Control, Miscellaneous	Lump Sum	LS
635E5980	Rectangular Rapid Flashing Beacon System	2	Each
650E0080	Type B68 Concrete Curb and Gutter	233	Ft

Non-Section Method

BID ITEM NUMBER	ITEM	QUANTITY	UNIT
651E0040	4" Concrete Sidewalk	14,977	SqFt
651E7000	Type 1 Detectable Warnings	227	SqFt
671E1048	48" Manhole	1	Each
671E6008	Type A8 Manhole Frame and Lid	1	Each
671E7020	Connect Into Existing Manhole	1	Each
730E0206	Type D Permanent Seed Mixture	56	Lb
731E0100	Fertilizing	271	Lb
732E0250	Fiber Mulching	553	Lb
734E0151	9" Diameter Erosion Control Wattle	25	Ft
734E5010	Sweeping	10	Hour
900E1350	Temporary Surfacing	100.0	SqFt
900E5520	12" Area Drain with Grate Assembly	1	Each



TABLE FOR ADJUSTMENT OF WATER VALVES

Station	Adjustment
12+28	4"
12+93	20"
22+04	4"
22+50	4"
22+52	4"
22+53	4"
27+80	6"
42+25	4"
42+45	4"

INTERSECTING ROADS AND ENTRANCES

In areas where granular material has been placed adjacent to the existing asphalt concrete, the Contractor will be required to remove the granular material to a depth below the existing asphalt concrete to allow for the placement of the new asphalt concrete. New asphalt concrete will be placed flush with the existing asphalt concrete. The existing granular material removed will be placed on the entrances, intersecting roads or other locations as directed by the Engineer.

All costs to remove and place the granular material including labor, equipment and incidentals will be incidental to the various related contract items.

CORRUGATED METAL PIPE

Corrugated metal pipes will have 2 3/8-inch x 1/2-inch corrugations for 42-inch and smaller round pipe and 48-inch and smaller arch pipe unless otherwise stated in the plans. Corrugated metal pipes will have 3-inch x 1-inch or 5-inch x 1-inch corrugations for 48-inch and larger round pipe and 54-inch and larger arch pipe unless otherwise stated in the plans.

PIPE COVER

The earthen subgrade cover for some pipe installations is less than one foot. The Contractor will take the necessary precautions to ensure the structural properties of the pipes are not damaged after installation and prior to the placement of final surfacing. Any additional costs for preventing damage to these pipes will be incidental to the contract unit price per foot for the corresponding pipe installation contract item.

CONTRACTOR FURNISHED BORROW EXCAVATION

The Contractor will provide a suitable site for Contractor furnished borrow excavation material. The Contractor is responsible for obtaining all required permits and clearances for the borrow site. The borrow material will be approved by the Engineer. The plans quantity for "Contractor Furnished Borrow Excavation" as shown in the Estimate of Quantities will be the basis of payment for this item.

Restoration of the Contractor furnished borrow excavation site will be the responsibility of the Contractor.

MAINTAIN DRIVEWAY ACCESS

The Contractor shall be responsible for providing access to all adjacent properties during construction. Temporary roadway and access closure is anticipated. The contractor shall coordinate with the adjacent property owners to meet their requirements for access to their properties. Final details and locations of access points and construction procedures shall be approved by the Engineer prior to the start of the work.

Gravel or other material approved by the Engineer shall be used for maintaining driveway accesses during construction. The temporary surfacing shall consist of approximately 4 inches of surfacing material with the top surface constructed to tie into the existing roadway surfaces. Compaction of the gravel shall be to the satisfaction of the Engineer. Cost for furnishing, hauling, placing, compacting, maintaining, removing, and disposing of the temporary surfacing materials shall be included in the contract unit price for "Temporary Surfacing"

WATER FOR COMPACTION

The cost of water for compaction of the granular material will be incidental to the various other contract items. A minimum of 4% moisture will be required at the time of compaction unless otherwise directed by the Engineer.

CONCRETE SIDEWALK

The concrete sidewalk will be constructed in accordance with Section 651.

Due to the extra depth required, the granular cushion material required, as per the typical sections, will be paid for separately at the contract unit price per ton for Gravel Cushion. The gravel cushion will meet the requirements of Section 882. Compaction will be to the satisfaction of the Engineer.

TABLE OF 4" CONCRETE SIDEWALK

Station	to	Station	L/R	Quantity (SqFt)
10+25		13+50	L	1,961
13+75		16+45	L	2,027
20+10		20+20	L	50
20+45		22+10	L	825
22+40		22+60	R	100
22+90		23+50	R	727
23+50		27+00	R	2,100
27+00		30+50	R	2,100
30+50		34+00	R	2,100
34+00		34+73	R	521
40+00		40+20	R	100
40+50		43+13	R	2,366
Total:				14,977

TABLE OF 6" REINFORCED CONCRETE DRIVEWAY

Station	to	Station	L/R	Quantity (SqFt)
20+20		20+45	L	18
Total:				18

ASPHALT CONCRETE COMPOSITE

Asphalt Concrete Composite will include MC-70 asphalt for prime placed at the rate of 0.30 gallons per square yard. The asphalt for prime will be applied to the Base Course for the full width of the bottom layer of Asphalt Concrete Composite plus one foot additional on the outside shoulder or the width of the Asphalt Concrete Composite lift in areas with curb and gutter. Blotting sand for prime required for maintenance of traffic will be applied at a rate of 10 pounds per square yard.

SS-1h or CSS-1h asphalt for tack will be applied prior to each lift of Asphalt Concrete Composite. Asphalt for tack will be applied at a rate of 0.09 gallons per square yard on existing pavement or milled asphalt concrete surfaces and at a rate of 0.06 gallons per square yard on primed base course or new asphalt concrete pavement. The asphalt for tack will be applied for the full width of the subsequent layers of Asphalt Concrete Composite plus one-half foot additional on the outside shoulder or the width of the Asphalt Concrete Composite lift in areas with curb and gutter.

TYPE 1 DETECTABLE WARNINGS

Detectable warnings will be in compliance with the Americans with Disabilities Act regulations.

The detectable warnings will be installed according to the manufacturer's installation instructions.



LONGITUDINAL PEDESTRIAN BARRICADE

Longitudinal pedestrian barricades should not be used to provide positive protection for pedestrians.

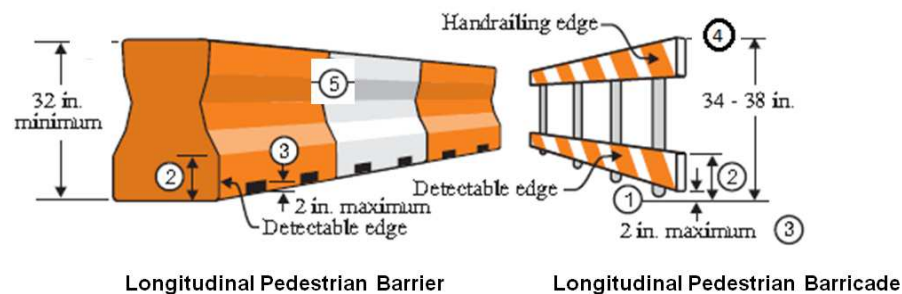
To prevent any tripping hazard to pedestrians, ballast will be located behind or internal to the device.

When longitudinal pedestrian barricades are combined in a series, the maximum gap between devices that do not interlock will be one inch. Joints between devices that do interlock will be closed and flush to prevent canes or small wheels from being trapped and to facilitate safe hand trailing. When used as a sidewalk closure mechanism, longitudinal pedestrian barricade must run the entire width of the sidewalk. Longitudinal pedestrian barricade should provide a color contrasting pattern. Black should not be used to color any base on a device. The devices should comply with the general color and stripe pattern requirements of Section 6F.68 of the MUTCD.

Longitudinal pedestrian barricade will have continuous bottom and top surfaces. The top surface will be smooth to allow safe hand trailing. Both upper and lower surfaces will share a common vertical plane.

All costs will be incidental to the contract unit price per foot for "Longitudinal Pedestrian Barricade".

PEDESTRIAN CHANNELIZING DEVICE DETAILS



1. Barricade rail supports may not extend into the pedestrian walkway more than 4 inches from the face of the barricade.
2. The top edge of the bottom portion will be a minimum of 8 inches above the walkway.
3. Devices will not block water drainage from the walkway. A gap height or opening from the walkway surface up to a maximum of 2 inches in height is allowed for drainage purposes.
4. The top edge of the longitudinal pedestrian barricade is to be used as a guiderail to provide visual and tactile guidance to pedestrians along a designated route. The top surface should have a minimum width of 0.5 inches to allow the hand to feel the surface. The surface should be smooth and free of any sharp or abrasive elements to allow safe hand trailing.

Longitudinal pedestrian barrier used to provide positive protection from traffic to pedestrians should be crashworthy.

COLD APPLIED PLASTIC PAVEMENT MARKING

All materials will be applied as per the manufacturer's recommendations.

Cold Applied Plastic Pavement Markings will be 3M Series 380 AW or an approved equal.

GROOVING FOR COLD APPLIED PLASTIC PAVEMENT MARKING

The Contractor will establish a positive means for the removal of the grinding and/or grooving residue. Residue from dry grooving will be vacuumed. Solid residue will be removed from the pavement surfaces before being blown by traffic action or wind. The Contractor will conduct this work to control and minimize airborne dust and similar debris that may become a hazard to motor vehicle operation or nuisance to property owners. Residue from wet grooving will not be permitted to flow across lanes being used by public traffic or into gutter or drainage facilities. Residue, whether in solid or slurry form, will be disposed of in a manner that will prevent it from reaching any waterway in a concentrated state. The cleaning of the residue for grooving will be to the satisfaction of the Engineer and may require more than one pass to adequately remove material. All costs for removal of grinding and/or grooving residue will be included in the contract unit price per foot, square foot, each, for "Grooving for Cold Applied Plastic Pavement Marking" contract items.

RECTANGULAR RAPID FLASHING BEACON SYSTEM

A Rectangular Rapid Flashing Beacon (RRFB) system will be in conformance with the current MUTCD and will consist of the following components:

- Individual RRFB displays as shown in the plans
- Accessible Pedestrian Signal push buttons as shown in the plans
- W11-2 (pedestrian crossing) signs as shown in the plans
- W16-7P (diagonal arrow) plaques as shown in the plans
- R10-25 (push button) signs as shown in the plans
- All necessary electronic programming and flash units, hardware, and wiring to make the system operational

One RRFB system is necessary for each pedestrian crossing location shown in the plans.

The programmed flash time will be as specified by the manufacturer. A small light directed at and visible to pedestrians in the crosswalk will be installed integral to the RRFB or push button, to give confirmation that each beacon is in operation.

All enclosures will be aluminum and comply with the requirements for NEMA 3R type.

All materials and installation costs necessary for the operation of each system will be incidental to the contract unit price per each for "Rectangular Rapid Flashing Beacon System".

DIGITALLY PRINTED SIGNS

Digitally printed signs will be allowed on this project. If the Contractor elects to provide digitally printed signs, such signs will adhere to the following specifications.

PROTECTIVE OVERLAY FILM

Permanent traffic signs printed with digital ink systems will be fabricated with a full sign protective overlay film designed to provide a smooth surface needed for retroreflectivity, and to protect the sign from fading and UV degradation. The overlaminates will comply with the retroreflective sheeting manufacturer's recommendations to ensure proper adhesion and transparency and will also meet the reflective film durability as identified in Table 1.

Table 1: Retroreflective Film Minimum Durability Requirements

ASTM D4956 Type	Full Sign Replacement Term (years)	Sheeting Replacement Term (years)
I	0	7
III	7	10
IV	7	10
VIII	7	10
IX	7	12
XI	7	12



MYCORRHIZAL INOCULUM

Mycorrhizal inoculum will consist of mycorrhizal fungi spores and mycorrhizal fungi-infected root fragments in a solid carrier. The carrier may include organic materials, calcinated clay, or other materials consistent with application and good plant growth. The supplier will provide certification of the fungal species claimed and the live propagule count. The inoculum will include a minimum 25% the fungal species *Rhizophagus intraradices*. The remaining 75% may include other endomycorrhizal fungal species.

All seed will be inoculated by the seed supplier with a minimum of 20,000 live propagules of mycorrhizal fungi per 1,000 square feet. All costs of inoculating the seed will be incidental to the contract unit price per pound for the corresponding permanent seed mixture.

The Mycorrhizal Inoculum provided will be from the approved product list. The approved product list may be viewed at the following internet site:

<http://apps.sd.gov/HC60ApprovedProducts/main.aspx>

FERTILIZING

A commercial fertilizer with a minimum guaranteed analysis of 13-13-13, 18-46-0, 11-52-0, or an approved alternate fertilizer sold for use as a lawn starter fertilizer will be applied to all areas designated for permanent seeding.

The application rate of fertilizer will be 3 pounds per 1,000 square feet.

PERMANENT SEEDING

The areas to be seeded consist of all newly graded areas within the project limits except for the top of roadways and temporary easements under cultivation.

Lawn and turf seed, such as the Type D Permanent Seed Mixture, will be tested within 12 months prior to planting, exclusive of the calendar month in which the test was completed.

Type D Permanent Seed Mixture will consist of the following:

Grass Species	Variety	Pure Live Seed (PLS) (Pounds/1000 SqFt)
Kentucky Bluegrass	Avalanche, Appalachian, Wildhorse, Blue Bonnet, Action	1.4
Perennial Ryegrass	Turf Type Varieties	1.4
Creeping Red Fescue	Epic, Boreal, Chantilly	1.4
Chewings Fescue	Ambrose, K2, Zodiac, Shadow III	1.4
Alkali Grass	Fults, Fults II, Quill, Salty	1.4
Total:		7

PLACING TOPSOIL

The thickness will be approximately 4 inches within the right-of-way and 6 inches on temporary easements. Placing Topsoil will not be measured for payment but will be paid for as plan quantity.

FIBER MULCHING

Fiber mulch will be applied in a separate operation following permanent seeding.

An additional 2% by weight of tackifier will be added to the fiber mulch product selected from the approved product list. If the product selected has guar gum tackifier included, then the additional 2% of tackifier will be guar gum. If the product selected has synthetic tackifier included, then the additional 2% of tackifier will be synthetic.

Fiber mulch will be applied at the rate of 3,000 pounds per acre.

The Contractor will allow the fiber mulch to cure a minimum of 18 hours prior to watering or any storm event to ensure proper cohesion between the soil and fiber particles.

All costs for the additional tackifier added to the fiber mulch including labor, equipment, and materials will be incidental to the contract unit price per pound for "Fiber Mulching".

The fiber mulch provided will be from the approved product list. The approved product list for fiber mulch may be viewed at the following internet site:

<http://apps.sd.gov/HC60ApprovedProducts/main.aspx>

EROSION CONTROL WATTLE

Erosion control wattles for restraining the flow of runoff and sediment will be installed at locations noted in the plans and at locations determined by the Engineer during construction. Refer to Standard Plate 734.06 for details.

The Contractor will provide certification that the erosion control wattles do not contain noxious weed seeds.

Erosion control wattles will remain on the project until vegetation has been established and then they will be removed in accordance with the Engineer.

The erosion control wattle provided will be from the approved product list. The approved product list for erosion control wattle may be viewed at the following internet site:

<http://apps.sd.gov/HC60ApprovedProducts/main.aspx>

STREET SWEEPING

Vehicle tracking of sediment from the construction site will be minimized. Street sweeping will be used if erosion and sediment control best management practices are not adequate to prevent sediment from being tracked onto the street.

The Contractor will use a pickup broom having integral self-contained storage to clean the roadway. The pickup broom used will be a minimum of 6 feet wide and have working gutter brooms.

At a minimum, sweeping will be required:

1. Prior to opening any segment or roadway to traffic.
2. When sawing operations are underway in the inside driving lanes, the outside driving lanes and gutter may need to be swept to control dust.

All costs for cleaning the roadway with a pickup broom will be incidental to the contract unit price per hour for "Sweeping".



TABLE OF EXCAVATION QUANTITIES BY BALANCES

Station to	Station	* Excavation		Total Excavation (CuYd)
		(CuYd)	Undercut (CuYd)	
10+50	13+50	12	36	48
13+50	17+00	15	38	53
20+00	23+50	10.5	32	42
23+50	27+00	13	39	52
27+00	30+50	13.5	39	52
30+50	34+00	13	39	52
34+00	35+50.43	4	10	14
40+00	43+50	15	46	61
Totals:		96	277	373

* The quantities for these items are in the Estimate of Quantities under their respective contract items.

SIGN QUANTITIES

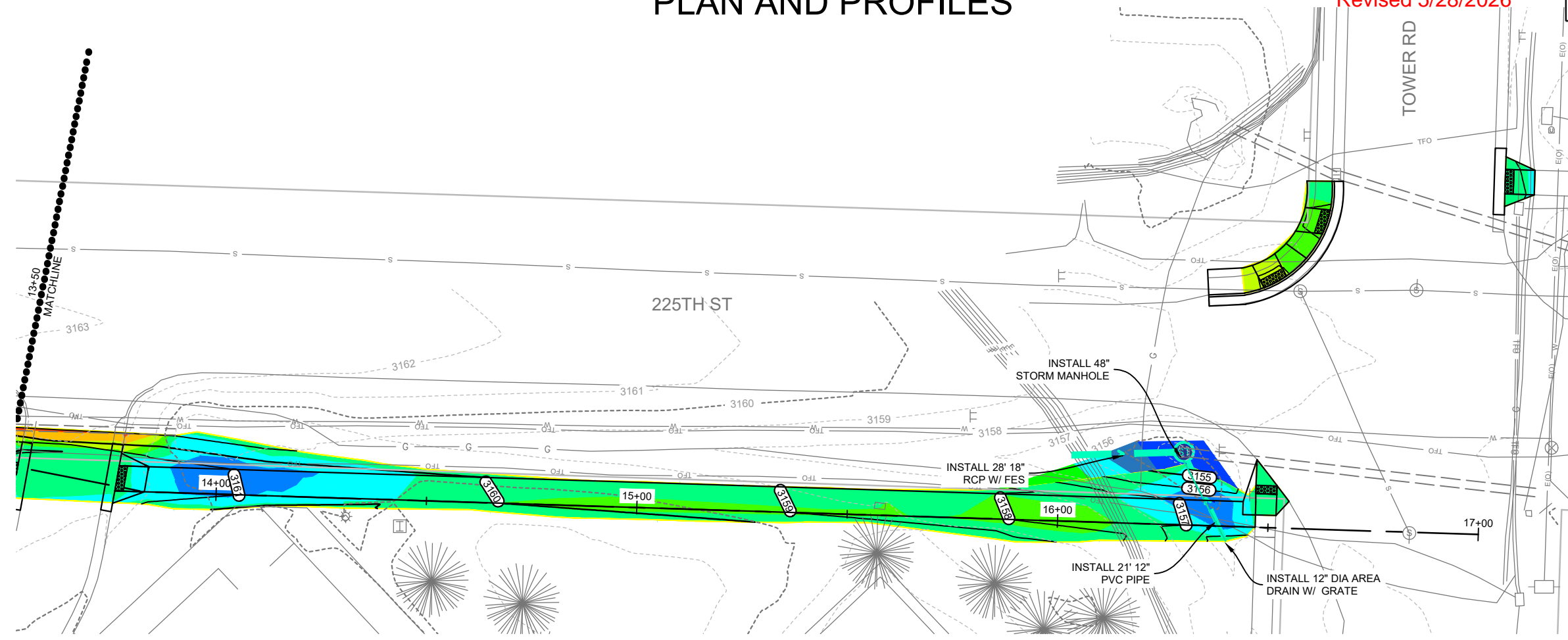
Station	Offset (L/R)	Sign Code	Sign Description	Reset Sign	Install Sign
				Each	SF
13+40	6.0R	Special	Maintenance	1	
16+45	10.0L	D3-1	Tower Rd/225th St	1	
21+48	12.0 L	R1-5A	Yield Here		9
22+43	6.0L	S1-1/W16-7P	School Crossing	1	
23+20	12.0R	R1-5A	Yield Here		9
24+60	15.0R	S1-1/W16-9P	School Advance	1	
26+30	8.0R	W14-3	No Passing Zone	1	
27+00	6.0R	S4-3P/R2-1/S4-2P	School Speed	1	
34+60	5.0L	R1-1	Stop	1	
39+50	50.0R	R1-5A	Yield Here		9
40+52	10.0R	R1-5A	Yield Here		9
Subtotal:				7	36



PLAN AND PROFILES

Revised 5/28/2026

SD DOT	PROJECT	SHEET	TOTAL SHEETS
	P TAPU(47)	28	112

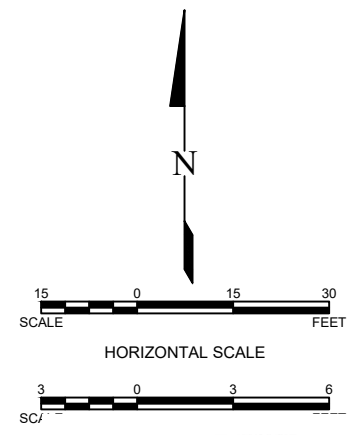
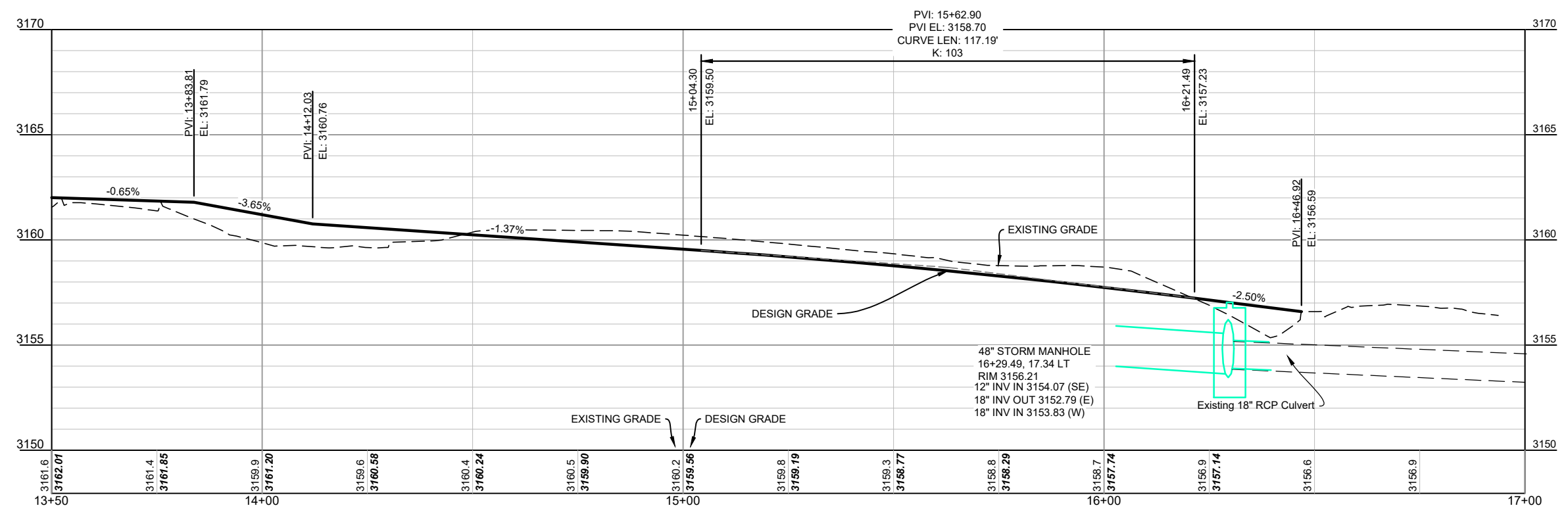


QUANTITIES THIS SHEET

4" CONCRETE SIDEWALK	2027 SF
TYPE B68 CONCRETE CURB AND GUTTER	82 LF
BASE COURSE	4 TON
GRAVEL CUSHION	37 TON
TYPE 1 DETECTABLE WARNINGS	60 SF
18" RCP	28 LF
12" PVC PIPE	21 LF
18" RCP FLARED END	1 EA
STORM MANHOLE	1 EA
12" DIA AREA DRAIN & GRATE	1 EA

SURFACE ELEVATION DATA

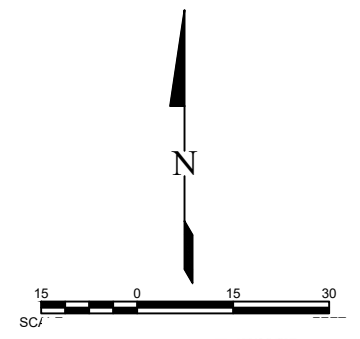
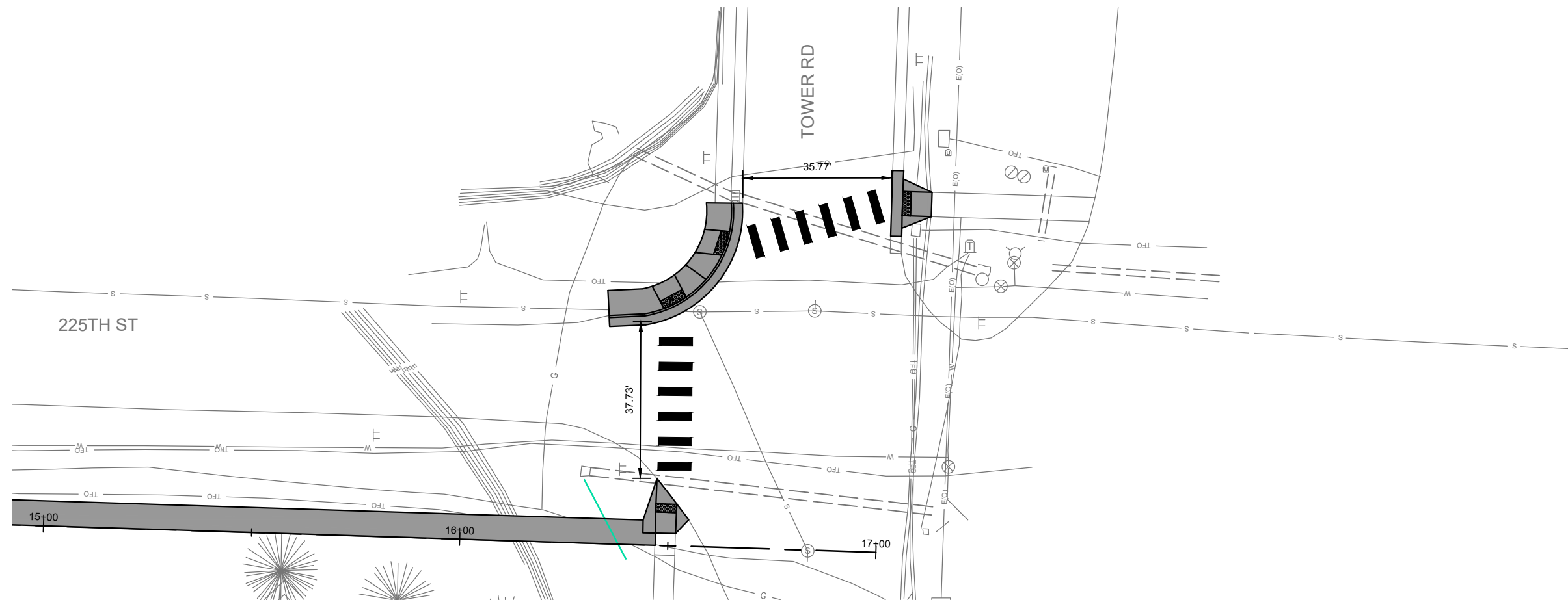
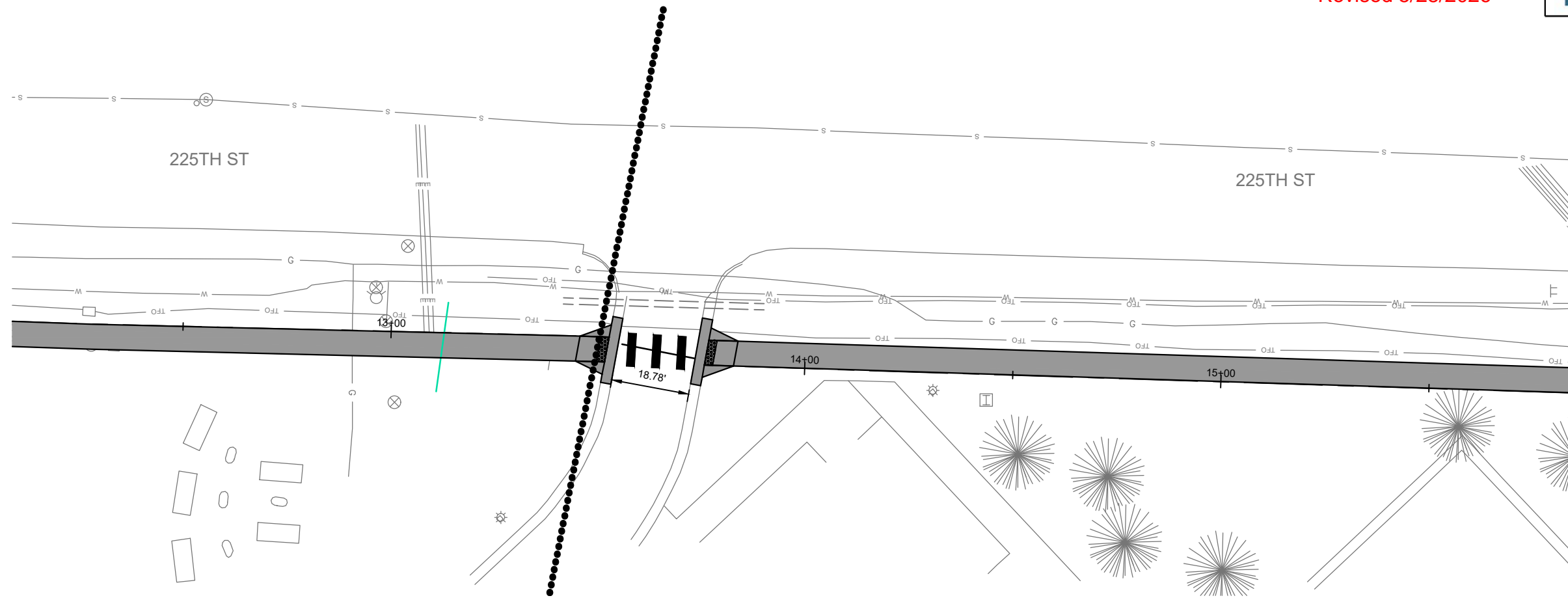
NUMBER	MINIMUM ELEVATION	MAXIMUM ELEVATION	COLOR
1	-4.41	-3.66	Red
2	-3.66	-2.82	Orange
3	-2.82	-2.04	Yellow
4	-2.04	-1.25	Light Green
5	-1.25	-0.44	Green
6	-0.44	0.35	Light Blue
7	0.35	1.15	Blue
8	1.15	1.94	Dark Blue
9	1.94	2.73	Purple
10	2.73	3.53	Dark Purple



Revised 5/28/2026

SD DOT	PROJECT	SHEET	TOTAL SHEETS
	P TAPU(47)	47	112

QUANTITIES THIS SHEET
COLD APPLIED PAVEMENT MARKING 73 FT
24" WHITE

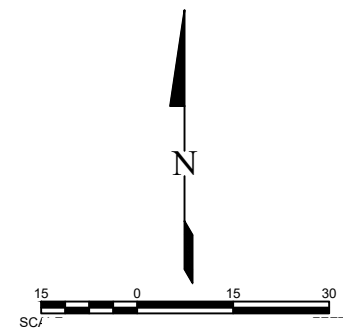
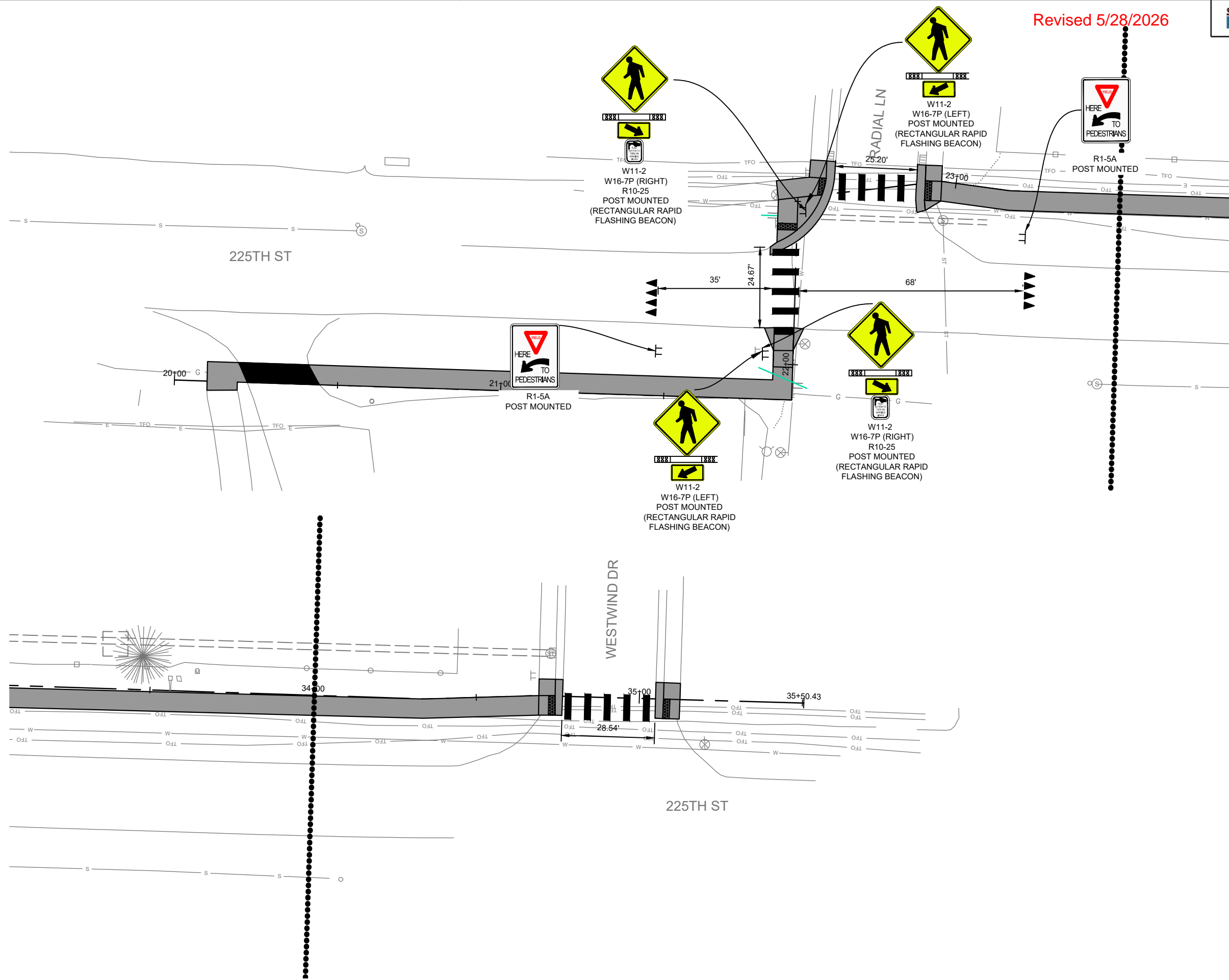


Revised 5/28/2026

SD DOT	PROJECT	SHEET	TOTAL SHEETS
	P TAPU(47)	48	112

QUANTITIES THIS SHEET

COLD APPLIED PAVEMENT MARKING 24" WHITE	61 FT
2" X 2" PERFORATED TUBE POST	22 FT
RECTANGULAR RAPID FLASHING BEACON	2 EA
FLAT ALUMINUM SIGN, NONREMOVABLE COPY SUPER/ VERY HIGH INTENSITY	18 SF
COLD APPLIED PAVEMENT MARKING, SYMBOL	2 EA

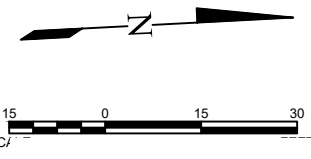
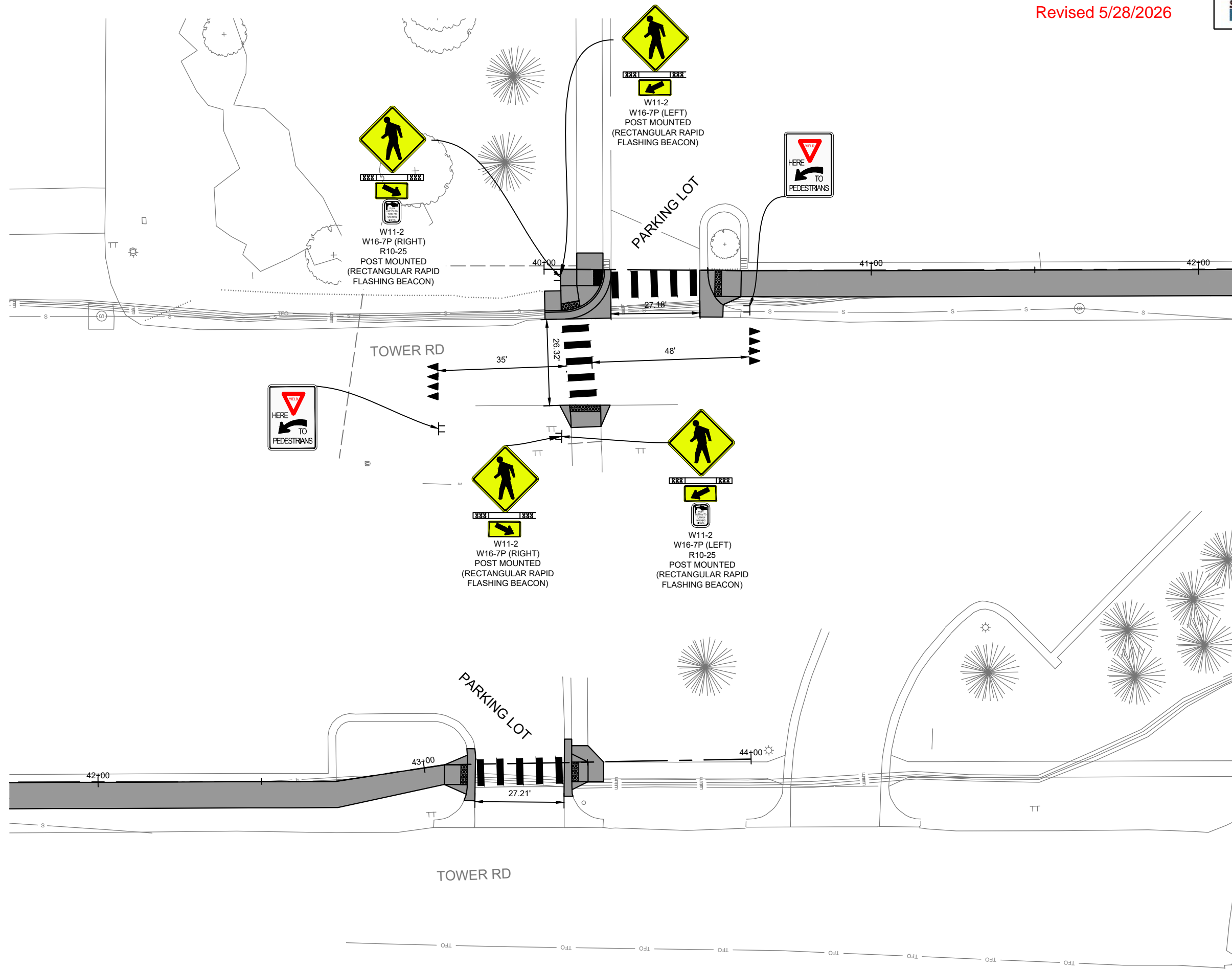


Revised 5/28/2026

SD DOT	PROJECT	SHEET	TOTAL SHEETS
	P TAPU(47)	49	112

QUANTITIES THIS SHEET

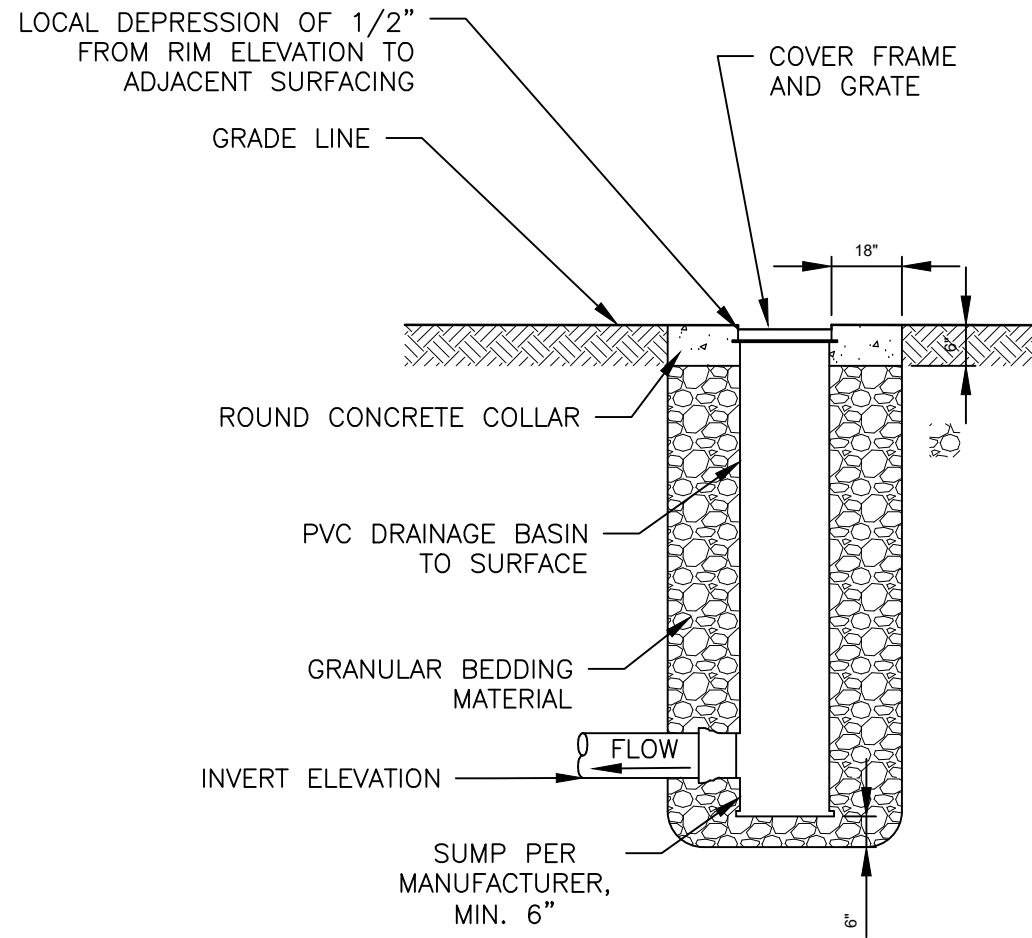
COLD APPLIED PAVEMENT MARKING 24" WHITE	53 FT
2" X 2" PERFORATED TUBE POST	22 FT
RECTANGULAR RAPID FLASHING BEACON	2 EA
FLAT ALUMINUM SIGN, NONREMOVABLE COPY SUPER/ VERY HIGH INTENSITY	18 SF
COLD APPLIED PAVEMENT MARKING, SYMBOL	2 EA



12" AREA DRAIN

Revised 5/28/2026

SD DOT	PROJECT	SHEET	TOTAL SHEETS
	P TAPU(47)	50	112



NOTES:

1. CONCRETE COLLAR SHALL HAVE (1) #4 REBAR HOOP MAINTAINING 3" CLEAR COVER.
2. COVER DIAMETER SHOULD MATCH STRUCTURE DIAMETER.
3. ALL COVERS SHALL BE LOCKING STYLE.
4. GRATED COVER SHALL BE PEDESTRIAN STYLE OPENINGS.
5. CONTRACTOR MAY USE ALTERNATE INLETS WITH PRIOR APPROVAL BY ENGINEER.

1 12" Area Drain w/ Grate
NO SCALE

