

February 2, 2026

ADDENDUM NO. 1

**RE: Item #7, February 18, 2026 Letting - IM 0902(196)59, PCN 0AD0, Pennington County -
Interstate Fence**

TO WHOM IT MAY CONCERN:

The following addenda to the plans shall be inserted and made a part of your proposal for the referenced project.

SPECIAL PROVISIONS: Please remove the Index of Special Provisions and replace with the attached Index of Special Provisions revised 1/30/26.

Please remove the "Wage and Hour Division US Department of Labor Washington DC. - US Dept. of Labor Decision Number SD20230032", dated 3/10/23 and replace with "Wage and Hour Division US Department of Labor Washington DC. - US Dept. of Labor Decision Number SD20260001", dated 1/30/26.

SDEBS BID PROPOSAL: *The electronic bid proposal for this contract has been revised to include the changes associated with this addendum. Bidders must log in to the SDEBS to retrieve and incorporate these changes into their bid.*

Quantities for Bid Items were changed:

Bid Item 110E0600 "Remove Fence" changed from 14,170 to 10,385 Ft

Bid Item 621E0160 "6' Chain Link Fence with Tension Wired Top" changed from 14,170 to 10,385 Ft

PLANS: Please destroy sheets 2, 3, 8, 9 & 10 and replace with the enclosed sheets, dated 1/29/26.

Sheet 2: Quantities for Bid Item 110E0600 "Remove Fence" changed from 14,170 to 10,385 Ft and Bid Item 621E0160 "6' Chain Link Fence with Tension Wired Top" changed from 14,170 to 10,385 Ft.

Sheet 3: Table of Right-of-Way Fence was revised.

Sheet 8: Fence layout was revised. Fence replacement from MRM 62+0.200 WB to MRM 62+0.417 was removed from the project.

Sheet 9: Sheet Intentionally Left Blank. Fence replacement from MRM 62+0.200 WB to MRM 62+0.417 WB was removed from the project.

Sheet 10: Fence layout was revised. Fence replacement from MRM 62+0.200 WB to MRM 62+0.417 WB was removed from the project.

Sincerely,

Sam Weisgram
Engineering Supervisor

SW/gp

CC: Todd Seaman, Rapid City Region Engineer
Mike Carlson, Rapid City Area Engineer

REV 1/30/26

INDEX OF SPECIAL PROVISIONS

PROJECT NUMBER(S): IM 0902(196)59 PCN: 0AD0

TYPE OF WORK: INTERSTATE FENCE

COUNTY: PENNINGTON

The following clauses have been prepared subsequent to the Standard Specifications for Roads and Bridges and refer only to the above described improvement, for which the following Proposal is made.

The Contractor's attention is directed to the need for securing from the Department of Environment & Natural Resources, Foss Building, Pierre, South Dakota, permission to remove water from public sources (lakes, rivers, streams, etc.). The Contractor should make his request as early as possible after receiving his contract, and insofar as possible at least 30 days prior to the date that the water is to be used.

Kara Palmer is the official in charge of the Hot Springs Career Center for Pennington County.

THE FOLLOWING ITEMS ARE INCLUDED IN THIS PROPOSAL FORM:

Special Provision for Contract Time, dated 12/22/25.

Special Provision for American Security Drone Act, dated 12/15/25.

Special Provision for Steel Beam Guardrail AASHTO M 180 Designation, dated 10/1/25.

Special Provision for Acknowledgment and Certification Regarding Article 3, Section 12 of the South Dakota Constitution, dated 8/24/23.

Fuel Adjustment Affidavit, DOT form 208 dated 11/25.

Standard Title VI Assurance, dated 3/1/16.

Special Provision For EEO Affirmative Action Requirements on Federal and Federal-Aid Construction Contracts, dated 2/5/24.

Special Provision For Required Contract Provisions Federal-Aid Construction Contracts, Form FHWA 1273 (Rev. October 23, 2023), dated 10/18/23.

Required Contract Provisions Federal-Aid Construction Contracts, Form FHWA 1273 (Rev. 10/23/23).

Special Provision Regarding Minimum Wage on Federal-Aid Projects, dated 10/24/19.

Wage and Hour Division US Department of Labor Washington DC. - US Dept. of Labor Decision Number SD20260001, dated 01/30/26.

**Wage and Hour Division
U.S. Department of Labor (DOL)
200 Constitution Avenue, N.W.
Washington, DC 20210**

Davis-Bacon Act Wage Decision
State: South Dakota
Construction Types: Heavy and Highway
Counties: South Dakota Statewide

Agency: U.S. DOL
Wage Decision Number: **SD20260001 SD1**
Counties: SD Statewide
Wage Decision Date: **01/30/2026 (Mod-0)**

***SUSD20260001 01-30-2026**

LABORERS

Group GL1

Air Tool Operator; Common Laborer; Landscape Worker; Flagger; Pilot Car Driver; Trucks under 26,000 GVW;
Materials Checker, Special Surface Finish Applicator

Group GL2

Mechanic Tender; Pipe Layer (except culvert); Form Builder Tender

Group GL3

Asphalt Plant Tender; Pile Driver Leadsman; Form Setter; Oiler/Greaser

Group GL5

Carpenter; Form Builder

Group GL6

Concrete Finisher; Grade Checker

POWER EQUIPMENT OPERATORS

Group G01

Tractor (farm type with attachments, including loaders but excluding Backhoe); Self Propelled Broom; Concrete
Routing Machine; Paver Feeder; Pugmill; Skid Steer

Group G02

Concrete Paving Cure Machine; Concrete Paving Joint Sealer; Bull Dozer 80 HP or less; Front End Loader 1.25
CY or less; Self Propelled Roller (except Hot Mix); Sheepsfoot/Pneumatic Roller; Pneumatic Tired Tractor or
Crawler (includes Water Wagon and Power Spray units); Wagon Drill (Air Trac – Trac Drill); Truck Type Auger;
Concrete Paving Saw; Concrete Grooving

Group G03

Asphalt Distributor; Bull Dozer over 80 HP; Backhoes/ Excavators 20 tons or less; Crusher (may include internal
screening plant); Front End Loader over 1.25 CY; Rough Motor Grader; Self Propelled Hot Mix Roller; Push or
Pull Tractor; Off-Highway Haul Trucks; Material Spreader or Placer; Rumble Strip Machine; Pavement Marking
Grinding Equipment

Group G04

Concrete Paving Finishing Machine; Asphalt Paving Machine Screed; Asphalt Paving Machine; Cranes/Derricks/
Draglines/Pile Drivers/Shovels 30 to 50 tons; Backhoes/Excavators 21 to 40 tons; Maintenance Mechanic;
Scrapers (wheel or tracks); Concrete Pump Truck

Group G05

Asphalt Plant; Concrete Batch Plant; Backhoes/Excavators over 40 Tons; Cranes/ Derricks/Draglines/Pile
Drivers/Shovels over 50 tons; Heavy Duty Mechanic; Finish Motor Grader; Automatic Fine Grader; Milling
Machine; Bridge Welder

TRUCK DRIVERS

Group GT1

Tandem Truck without trailer or pup; Single Axle Truck over 26,000 GVW with Trailer

Group GT2

Semi-Tractor and Trailer; Tandem Truck with Pup or Trailer

<u>Rates</u>	<u>Fringes</u>
26.93	0.00
26.96	0.00
28.97	0.00
31.94	0.00
29.81	0.00
30.16	0.00
31.73	0.00
31.56	0.00
32.49	0.00
34.96	8.36
30.01	0.00
32.07	8.42

**Wage and Hour Division
U.S. Department of Labor (DOL)
200 Constitution Avenue, N.W.
Washington, DC 20210**

Davis-Bacon Act Wage Decision
State: South Dakota
Construction Types: Heavy and Highway
Counties: South Dakota Statewide

Agency: U.S. DOL
Wage Decision Number: **SD20260001 SD1**
Counties: SD Statewide
Wage Decision Date: **01/30/2026 (Mod-0)**

***SUSD20260001 01-30-2026**

ELECTRICIANS

Group E01

Electrician

IRON WORKERS

Group I01

Position and secure steel bars or mesh in concrete for reinforcement, steel tiers, saw. Carrying, placing, tying, reinforcing steel under supervision, cutting. Placing steel or prefabricated reinforcement assembly for placement in concrete forms.

Group I02

Erect, place and join steel girders, columns, structural framework, air wrenches, spud bars, grinders, drills, sledgehammers, tag lines, plumb bobs, lasers, levels, bolts, wire, welds, shears, rod-bending machines, torches.

PAINTERS

Group P01

Line striping machine, paint trucks, epoxy trucks, thermoplastic trucks, cold applied plastic/and preformed thermoplastic pavement marking equipment. Operate pavement marking equipment to include epoxies, paints, primers, sealers, cold applied tapes, thermoplastics used for traffic marking purposes.

Group P02

Painting or protective coating bridges, apply varnish, anti-rust materials, prepare steel or other surfaces with primer or sandblasting, paints structural framework of bridges, guardrails and cables of bridges and other structures.

<u>Rates</u>	<u>Fringes</u>
35.43	8.69
26.93	0.00
28.97	0.00
26.96	0.00
29.81	0.00

WELDERS – Receive rate prescribed for craft performing operation to which welding is incidental.

Unlisted classifications needed for work not included within the scope of the classifications listed may be added after award, pursuant to 29 CFR 5.5(a)(1)(ii); contractors are responsible for requesting SDDOT to secure necessary additional work classifications and rates.

The ""SU"" identifier indicates that either a single non-union rate prevailed (as defined in 29 CFR 1.2) for this classification in the survey or that the rate was derived by computing a weighted average rate based on all the rates reported in the survey for that classification. As a weighted average rate includes all rates reported in the survey, it may include both union and non-union rates. Example: SUFL2022-007 6/27/2024. SU indicates the rate is a single non-union prevailing rate or a weighted average of survey data for that classification. FL indicates the State of Florida. 2022 is the year of the survey on which these classifications and rates are based. The next number, 007 in the example, is an internal number used in producing the wage determination. The date, 6/27/2024 in the example, indicates the survey completion date for the classifications and rates under that identifier. Survey wage rates are not updated and remain in effect until a new survey is conducted.

“SU” wage rates typically remain in effect until a new survey is conducted. However, the Wage and Hour Division (WHD) has the discretion to update such rates under 29 CFR 1.6(c)(1).

For SDDOT Defined Work Classifications, please visit: <https://dot.sd.gov/doing-business/contractors/labor-compliance>

A COPY OF THIS DOCUMENT, COLORED **GREEN, MUST** BE CONSPICUOUSLY POSTED AT THE PROJECT SITE

**Wage and Hour Division
U.S. Department of Labor (DOL)
200 Constitution Avenue, N.W.
Washington, DC 20210**

**Davis-Bacon Act Wage Decision
State: South Dakota
Construction Types: Heavy and Highway
Counties: South Dakota Statewide**

WAGE DETERMINATION APPEALS PROCESS

- 1) Has there been an initial decision in the matter? This can be:
- a) a survey underlying a wage determination
 - b) an existing published wage determination
 - c) an initial WHD letter setting forth a position on a wage determination matter
 - d) an initial conformance (additional classification and rate) determination

On survey related matters, initial contact, including requests for summaries of surveys, should be directed to the WHD Branch of Wage Surveys. Requests can be submitted via email to davisbaconinfo@dol.gov or by mail to:

**Branch of Wage Surveys
Wage and Hour Division
U.S. Department of Labor
200 Constitution Avenue, N.W.
Washington, DC 20210**

Regarding any other wage determination matter such as conformance decisions, requests for initial decisions should be directed to the WHD Branch of Construction Wage Determinations. Requests can be submitted via email to BCWD-Office@dol.gov or by mail to:

**Branch of Construction Wage Determinations
Wage and Hour Division
U.S. Department of Labor
200 Constitution Avenue, N.W.
Washington, DC 20210**

- 2) If an initial decision has been issued, then any interested party (those affected by the action) that disagrees with the decision can request review and reconsideration from the Wage and Hour Administrator (See 29 CFR Part 1.8 and 29 CFR Part 7). Requests for review and reconsideration can be submitted via email to dba.reconsideration@dol.gov or by mail to:

**Wage and Hour Administrator
U.S. Department of Labor
200 Constitution Avenue, N.W.
Washington, DC 20210**

The request should be accompanied by a full statement of the interested party's position and any information (wage payment data, project description, area practice material, etc.) that the requestor considers relevant to the issue.

- 3) If the decision of the Administrator is not favorable, an interested party may appeal directly to the Administrative Review Board (formerly the Wage Appeals Board). Write to:

**Administrative Review Board
U.S. Department of Labor
200 Constitution Avenue, N.W.
Washington, DC 20210.**

END OF GENERAL DECISION

ESTIMATE OF QUANTITIES

BID ITEM NUMBER	ITEM	QUANTITY	UNIT
009E0010	Mobilization	Lump Sum	LS
009E4100	Construction Schedule, Category I	Lump Sum	LS
100E0100	Clearing	Lump Sum	LS
110E0600	Remove Fence	10,385	Ft
621E0160	6' Chain Link Fence with Tension Wired Top	10,385	Ft
621E0430	Double Vehicular Swing Gate	2	Each
634E0110	Traffic Control Signs	32.0	SqFt
634E0120	Traffic Control, Miscellaneous	Lump Sum	LS

ENVIRONMENTAL COMMITMENTS

The SDDOT is committed to protecting the environment and uses Environmental Commitments as a communication tool for the Engineer and Contractor to ensure that attention is given to avoid, minimize, and/or mitigate an environmental impact. Environmental commitments to various agencies and the public have been made to secure approval of this project. An agency with permitting authority can delay a project if identified environmental impacts have not been adequately addressed. Unless otherwise designated, the Contractor’s primary contact regarding matters associated with these commitments will be the Project Engineer. During construction, the Project Engineer will verify that the Contractor has met Environmental Commitment requirements. These environmental commitments are not subject to change without prior written approval from the SDDOT Environmental Office.

Additional guidance on SDDOT’s Environmental Commitments can be accessed through the Environmental Procedures Manual found at: <<https://dot.sd.gov/media/documents/EnvironmentalProceduresManual.pdf> >

For questions regarding change orders in the field that may have an effect on an Environmental Commitment, the Project Engineer will contact the Environmental Engineer at 605-773-3180 or 605-773-4336 to determine whether an environmental analysis and/or resource agency coordination is necessary.

Once construction is complete, the Project Engineer will review all environmental commitments for the project and document their completion.

COMMITMENT B: FEDERALLY THREATENED, ENDANGERED, AND PROTECTED SPECIES

COMMITMENT B2: WHOOPING CRANE

The Whooping Crane is a spring and fall migratory bird in South Dakota that is about 5 feet tall and typically stops on wetlands, rivers, and agricultural lands along their migration route. An adult Whooping Crane is white with a red crown and a long, dark, pointed bill. Immature Whooping Cranes are cinnamon brown. While in flight, their long necks are kept straight and their long dark legs trail behind. Adult Whooping Cranes' black wing tips are visible during flight.

Action Taken/Required:

Harassment or other measures to cause the Whooping Crane to leave the site is a violation of the Endangered Species Act. If a Whooping Crane is sighted roosting in the vicinity of the project, borrow pits, or staging areas associated with the project, cease construction activities in the affected area until the Whooping Crane departs and immediately contact the Project Engineer. The Project Engineer will contact the Environmental Office so that the sighting can be reported to USFWS.

COMMITMENT E: STORM WATER

Construction activities constitute less than 1 acre of disturbance.

Action Taken/Required:

At a minimum and regardless of project size, appropriate erosion and sediment control measures must be installed to control the discharge of pollutants from the construction site.

COMMITMENT H: WASTE DISPOSAL SITE

The Contractor will furnish a site(s) for the disposal of construction and/or demolition debris generated by this project.

Action Taken/Required:

Construction and/or demolition debris may not be disposed of within the Public ROW.

The waste disposal site(s) will be managed and reclaimed in accordance with the following from the General Permit for Construction/Demolition Debris Disposal Under the South Dakota Waste Management Program issued by the Department of Agriculture and Natural Resources.

The waste disposal site(s) will not be located in a wetland, within 200 feet of surface water, or in an area that adversely affects wildlife, recreation, aesthetic value of an area, or any threatened or endangered species, as approved by the Environmental Office and the Project Engineer.

If the waste disposal site(s) is located such that it is within view of any ROW, the following additional requirements will apply:

1.

Construction and/or demolition debris consisting of concrete, asphalt concrete, or other similar materials will be buried in a trench separate from wood debris. The final cover over the construction and/or demolition debris will consist of a minimum of 1 foot of soil capable of supporting vegetation. Waste disposal sites provided outside of the Public ROW will be seeded in accordance with Natural Resources Conservation Service recommendations. The seeding recommendations may be obtained through the appropriate County NRCS Office. The Contractor will control the access to waste disposal sites not within the Public ROW with fences, gates, and placement of a sign or signs at the entrance to the site stating, “No Dumping Allowed”.
2.

Concrete and asphalt concrete debris may be stockpiled within view of the ROW for a period not to exceed the duration of the project. Prior to project completion, the waste will be removed from view of the ROW or buried, and the waste disposal site reclaimed as noted above.

COMMITMENT I: HISTORIC PRESERVATION OFFICE CLEARANCES

The SDDOT has obtained concurrence with the State Historic Preservation Office (SHPO or THPO) for all work included within the project limits and all department designated sources and designated option material sources, stockpile sites, storage areas, and waste sites provided within the plans.

Action Taken/Required:

All earth disturbing activities not designated within the plans require a cultural resource review prior to scheduling the pre-construction meeting. This work includes but is not limited to: Contractor furnished material sources, material processing sites, stockpile sites, storage areas, plant sites, and waste areas.

The Contractor will arrange and pay for a record search and when necessary, a cultural resource survey. The Contractor has the option to contact the state Archaeological Research Center (ARC) at 605-394-1936 or another qualified archaeologist, to obtain either a records search or a cultural resources survey. A record search might be sufficient for review if the site was previously surveyed; however, a cultural resources survey may need to be conducted by a qualified archaeologist.

The Contractor will provide ARC with the following: a topographical map or aerial view in which the site is clearly outlined, site dimensions, project number, and PCN. If applicable, provide evidence that the site has been previously disturbed by farming, mining, or construction activities with a landowner statement that artifacts have not been found on the site.

The Contractor will submit the cultural resources survey report to SDDOT Environmental Office, 700 East Broadway Avenue, Pierre, SD 57501-2586. SDDOT will submit the information to the appropriate SHPO/THPO. Allow **30 Days** from the date this information is submitted to the Environmental Engineer for SHPO/THPO review.

In the event of an inadvertent discovery of human remains, funerary objects, or if evidence of cultural resources is identified during project construction activities, then such activities within 100 feet of the inadvertent discovery will immediately cease and the Project Engineer will be immediately notified. The Project Engineer will contact the SDDOT Environmental Office, who will contact the appropriate SHPO/THPO within 48 hours of the discovery to determine an appropriate course of action.

SHPO/THPO review does not relieve the Contractor of the responsibility for obtaining any additional permits and clearances for Contractor furnished material sources, material processing sites, stockpile sites, storage areas, plant sites, and waste areas that affect wetlands, threatened and endangered species, or waterways. The Contractor will not utilize a site known or suspected of having contaminated soil or water. The Contractor will provide the required permits and clearances to the Project Engineer at the preconstruction meeting.

UTILITIES

The Contractor will contact the involved utility companies through South Dakota One Call (1-800-781-7474) prior to starting work. It will be the responsibility of the Contractor to coordinate work with the utility owners to avoid damage to existing facilities.

Utilities are not planned to be affected on this project. If utilities are identified near the improvement area through the SD One Call Process as required by South Dakota Codified Law 49-7A and Administrative Rule Article 20:25, the Contractor will contact the project engineer to determine modifications that will be necessary to avoid utility impacts.

REMOVE FENCE

The Contractor will remove the existing barbed wire right-of-way fence that is to be replaced as designated in the plans and/or as ordered by the Engineer. This includes all fencing, posts, brace panels, or anything pertaining to the existing fence. Upon removal all items other than tubular gates will become property of contractor.

Limited Access Security - All barbed wire fence removed during any one working day is to be replaced during the same day. Contractor is responsible for any and all livestock encountered anywhere along the fence being replaced. Control of livestock during the time that any fence is being replaced is the sole responsibility of the Contractor. All costs of this work and any temporary fencing will be incidental to the contract unit price for the various fence items.

The Contractor will coordinate with landowners to ensure cattle are contained on the landowner's property.

CLEARING

Prior to installing right-of-way fence, the fence alignment will be cleared of all brush and various debris to allow for placement of new fence on existing alignment

The Contractor is responsible for visiting the project site and determining the amount of work involved with Clearing.

FENCE ALIGNMENT

Fence posts may be adjusted so not to fall in the same hole from removed fence.

The fence will be placed 1' inside the highway Right Of Way (ROW). The ROW has been monumented and marked. Contact the Rapid City Region Surveyor if there are questions related to the location of the ROW.

New and existing fence will be tied to existing structures as directed by the Engineer.

GATES, WIDE DEPRESSIONS, AND STREAM CROSSINGS

Prior to submitting a bid the Contractor will inspect the project site and determine the number of gates, wide depressions, and stream crossings.

RESTORATION OF INSLOPES AND DITCHES

Any slope area or ditch that is rutted or disturbed during fencing operations will be restored and seeded by the Contractor, at no expense to the State.

ROW SURVEY MARKERS

Any ROW survey markers that are damaged or destroyed during construction will be replaced by the Contractor at no additional cost to the State.

Table of Right-of-Way Fence								
Direction					Remove Fence	6' Chain Link Fence with Tension Wired Top	Double Vehicular Swing Gate	
MRM	Disp	to	MRM	Disp	E/W	(Ft)	(Ft)	(Each)
59	+ 0.506		60	+ 0.410	WB	4720	4720	
59	+ 0.849				WB			1
61	+ 0.854		62	+ 0.200	WB	1555	1555	
63	+ 0.417		64	+ 0.153	WB	4110	4110	1
						10385	10385	2

SEQUENCE OF OPERATIONS

The Contractor will submit a sequence of operations for approval two weeks prior to the preconstruction meeting. If changes to the sequence of operations are proposed during the project, these must be submitted for review a minimum of one week prior to potential implementation. Approval for changes to the sequence of operations will only be allowed when the proposed changes meet with the Department's intent for traffic control and sequencing of the work.

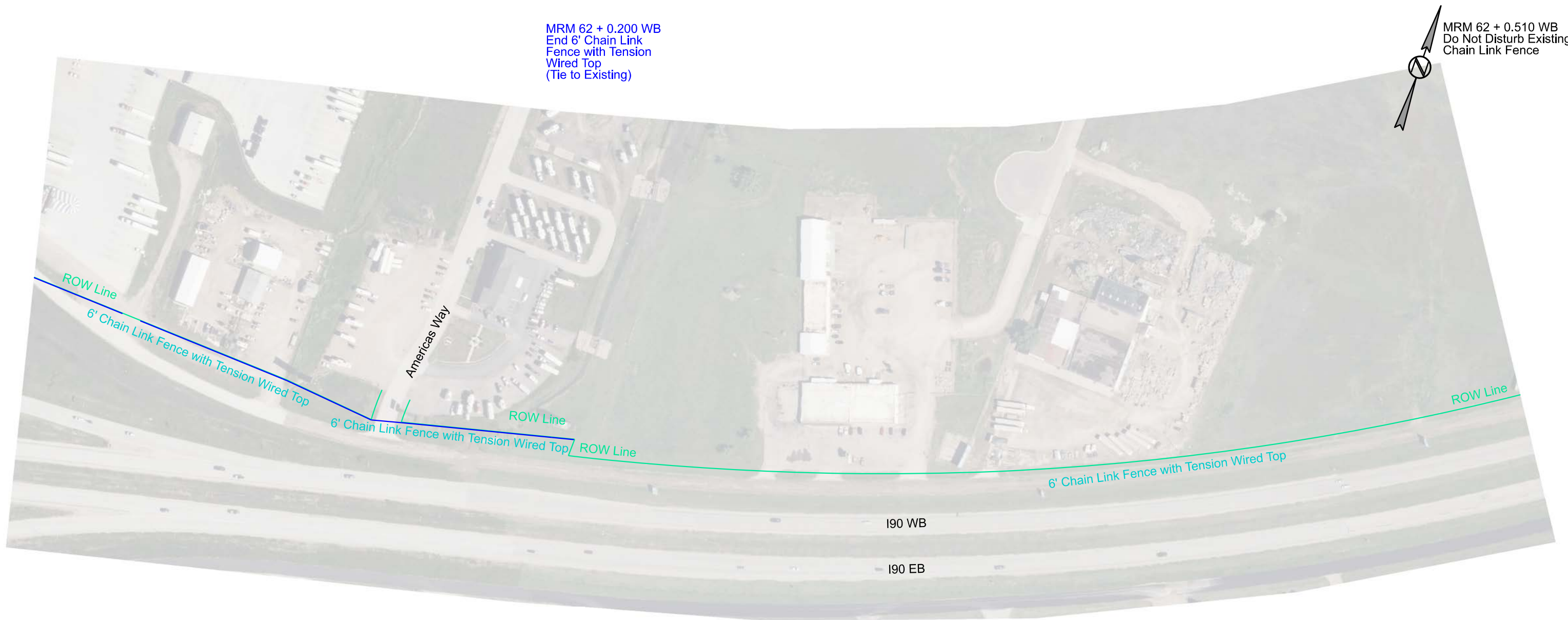
TRAFFIC CONTROL – GENERAL NOTES

Unless otherwise stated in these plans, no work will be allowed during hours of darkness.

All haul trucks will be equipped with a second flashing amber light that is visible from the backside of the haul truck. The costs for the flashing amber lights will be incidental to the various related contract items.

ITEMIZED LIST OF TRAFFIC CONTROL DEVICES

		EXPRESSWAY / INTERSTATE			
SIGN CODE	SIGN DESCRIPTION	NUMBER	SIGN SIZE	SQFT PER SIGN	SQFT
W20-1	ROAD WORK AHEAD	2	48" x 48"	16.0	32.0
		EXPRESSWAY / INTERSTATE TRAFFIC CONTROL SIGNS			32.0



THIS SHEET
INTENTIONALLY LEFT BLANK

MRM 63 + 0.417 WB
Begin 6' Chain Link
Fence with Tension
Wired Top

MRM 63 + 0.527 WB
Install 24' Double Vehicular
Swing Gate

