

FOR BIDDING PURPOSES ONLY

STATE OF SOUTH DAKOTA	PROJECT NH 0100(106)409 & P 8042(00)	SHEET 1	TOTAL SHEETS 626
-----------------------	---	------------	---------------------

FILE: ...Section A\A01 (Title).dgn
PLOTTING DATE: 10-14-2024
REV DATE:
INITIAL:

STATE OF SOUTH DAKOTA
DEPARTMENT OF TRANSPORTATION
PLANS FOR PROPOSED

PROJECTS NH 0100(106)409 & P 8042(00)

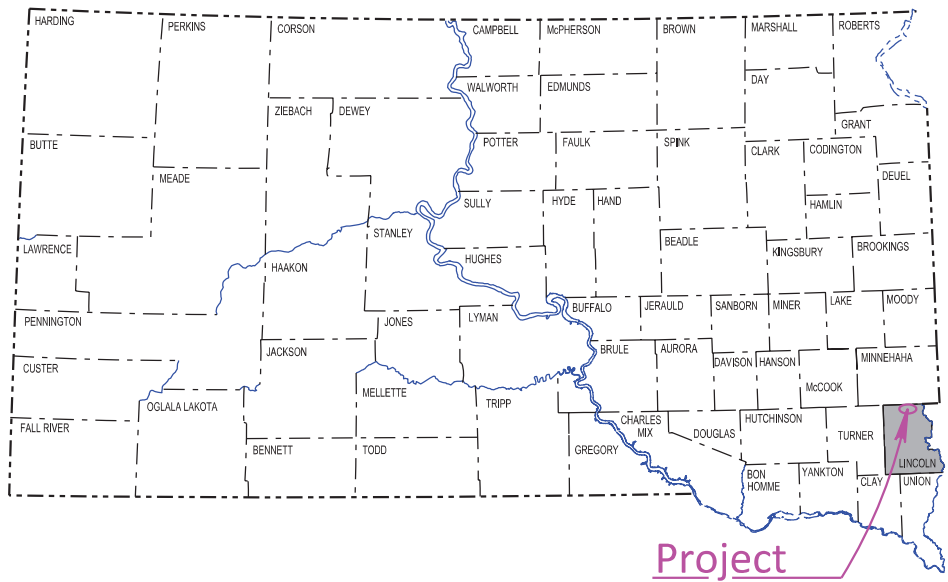
VETERANS PARKWAY
LINCOLN COUNTY

GRADING, STRUCTURES, CURB & GUTTER, STORM SEWER, PCC/AC PAVEMENT,
PAVEMENT MARKING, SIGNALS, LIGHTING, PERMANENT SIGNING

PCN 01V7, 08DG, & 08DH

INDEX OF SECTIONS

- Section A Estimate of Quantities & Environmental Commitments
- Section B Grading Plans
- Section C Traffic Control Plans
- Section D Erosion Control Plans
- Section E Structure Plans
- Section F Landscaping Plans
- Section H Surfacing Plans
- Section L Signal and Lighting Plans
- Section M Pavement Marking Plans
- Section S Permanent Signing Plans
- Section X Cross Sections
- Section Z Pipe Sections



DESIGN DESIGNATION

	VETERANS PARKWAY (Cliff Ave to Southeastern Ave)	VETERANS PARKWAY (Southeastern Ave to Sycamore Ave)
AADT (2021)	0	0
AADT (2045)	15,000	12,000
DHV	1,605	1,284
D	50%	50%
DHV T%	3.3%	3.6%
AADT T%	7.3%	7.9%
V	60 mph	60 mph

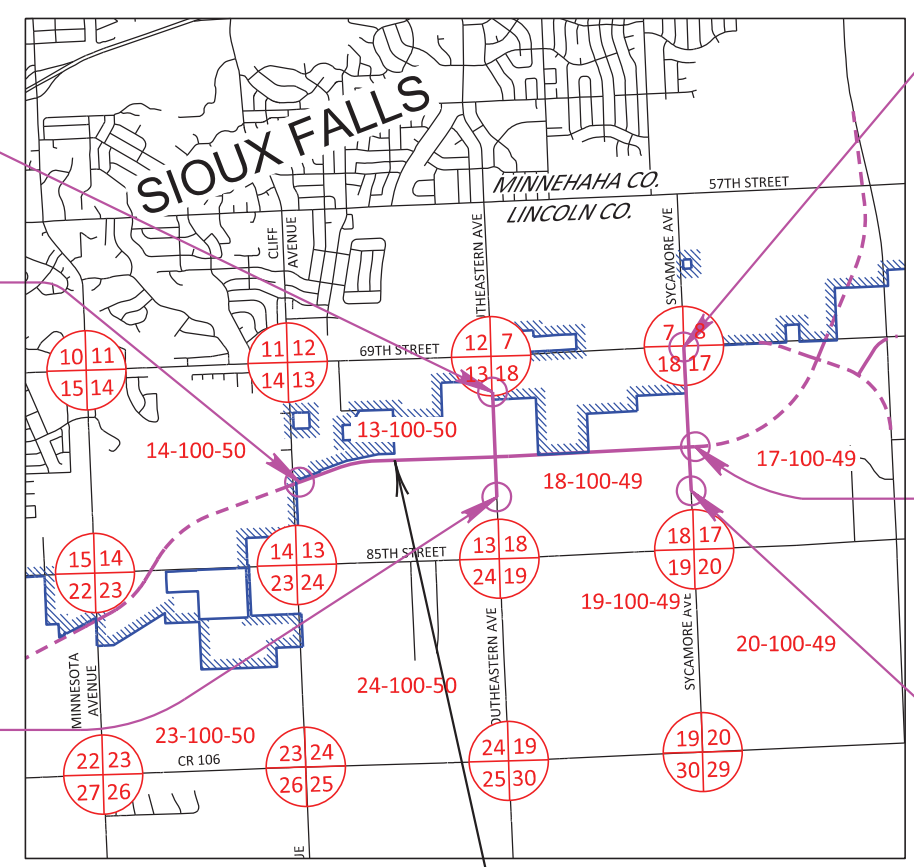
	SOUTHEASTERN AVENUE (S of Veterans Parkway)	SOUTHEASTERN AVENUE (N of Veterans Parkway)	SYCAMORE AVENUE (S of Veterans Parkway)	SYCAMORE AVENUE (N of Veterans Parkway)
AADT (2021)	900	900	200	200
AADT (2045)	12,300	15,300	6,600	5,000
DHV	1,400	1,750	750	570
D	55%	55%	60%	55%
DHV T%	3.5%	3.4%	3.2%	3.3%
AADT T%	7.6%	7.5%	6.9%	7.2%
V	45 mph	45 mph	45 mph	45 mph

STORM WATER PERMIT
Major Stream: Big Sioux River
Area Disturbed: 53.39 Acres
Total Project Area: 85.55 Acres
Approx. Begin Lat/Long: 43.4809, -96.7071

END P 8042(00)
PCN 08DG
SOUTHEASTERN AVENUE
Station 628+39.38

BEGIN NH 0100(106)409
VETERANS PARKWAY
Station 326+00.00
Approx. 170.53' east and 2,147.64' north of the SW corner of Section 13 - Township 100 N - Range 50 W of the 5th P.M.

BEGIN P 8042(00)
PCN 08DG
SOUTHEASTERN AVENUE
Station 600+99.31



END P 8042(00)
PCN 08DH
SYCAMORE AVENUE
Station 737+47.41

END NH 0100(106)409
VETERANS PARKWAY
Station 430+00.00
Approx. 178.64' east and 2,657.52' north of the SW corner of Section 17 - Township 100 N - Range 49 W of the 5th P.M.

BEGIN P 8042(00)
PCN 08DH
SYCAMORE AVENUE
Station 699+99.87

Sta. 350+76.36 to Sta. 352+72.86
Str. No. 42-115-015
196'-6" Steel Girder Bridge

Veterans Parkway Gross Length	10,400.00 Feet	1.970 Miles
Southeastern Avenue Gross Length	2,403.07 Feet	0.455 Miles
Sycamore Avenue Gross Length	4,414.53 Feet	0.836 Miles
Total Net Length	17,217.60 Feet	3.261 Miles



ESTIMATE OF QUANTITIES AND ENVIRONMENTAL COMMITMENTS FOR BIDDING PURPOSES ONLY

STATE OF SOUTH DAKOTA	PROJECT	SHEET	TOTAL SHEETS
	NH 0100(106)409 & P 8042(00)	A1	A9

Section B – Grading

REV DATE: 1/13/2025
INITIAL: JHU

INDEX OF SHEETS	
A1 to A5 A6 to A9	Est. of Quantities for Sections B, C, D, E, F, H, L, M, and S Environmental Commitments

Bid Item Number	Item	Quantity				Unit
		PCN 01V7 Veterans	PCN 08DG Southeaster	PCN 08DH Sycamore	Total	
009E0010	Mobilization	Lump Sum	Lump Sum	Lump Sum	Lump Sum	LS
009E3220	Reestablish Right-of-Way and Property Corner	107	24	18	149	Each
009E3225	Reestablish Public Land Survey System Corner	3	-	-	3	Each
009E3230	Grade Staking	13,750	1,125	1,005	15,880	Mile
009E3245	Final Cross Section Survey	2,050	0,455	0,647	3,152	Mile
009E3250	Miscellaneous Staking	3,300	0,455	0,647	4,402	Mile
009E3280	Slope Staking	2,050	0,455	0,647	3,152	Mile
009E3290	Structure Staking	7	1	-	8	Each
009E3301	Engineer Directed Surveying/Staking	40.0	10.0	10.0	60.0	Hour
009E4300	Construction Schedule, Category III	Lump Sum	Lump Sum	Lump Sum	Lump Sum	LS
009E4330	Project Management, Category III	Lump Sum	Lump Sum	Lump Sum	Lump Sum	LS
100E0020	Clear and Grub Tree	-	5	45	50	Each
100E0100	Clearing	Lump Sum	-	Lump Sum	Lump Sum	LS
110E0300	Remove Concrete Curb and/or Gutter	-	84	-	84	Ft
110E0600	Remove Fence	2,841	4,374	5,476	12,691	Each
110E1010	Remove Asphalt Concrete Pavement	-	3,715.1	-	3,715.1	SqYd
110E1100	Remove Concrete Pavement	-	86.6	-	86.6	SqYd
110E1140	Remove Concrete Sidewalk	-	74.6	-	74.6	SqYd
120E0010	Unclassified Excavation	261,329	27,497	28,061	316,887	CuYd
120E0300	Borrow Unclassified Excavation	1,063,506	27,443	9,357	1,100,306	CuYd
120E0600	Contractor Furnished Borrow Excavation	154,703	-	-	154,703	CuYd
120E1000	Muck Excavation	63,558	6,307	4,056	73,921	CuYd
120E2000	Undercutting	7,625	6,338	9,529	23,492	CuYd
120E6100	Water for Embankment	9,780.2	355.4	268.9	10,404.5	MGal
120E7500	Aggregate Column	5,005.2	-	-	5,005.2	CuYd
250E0020	Incidental Work, Grading	Lump Sum	Lump Sum	Lump Sum	Lump Sum	LS
260E1060	Base Course, Modified	8,765.0	-	-	8,765.0	Ton
260E6010	Granular Material	389.1	414.2	61.2	864.5	Ton
380E2564	4" Barrier Type Colored Median PCC Pavement	2,791.8	662.4	379.4	3,833.6	SqYd
380E2566	6" Barrier Type Colored Median PCC Pavement	979.1	291.7	231.7	1,502.5	SqYd
380E3520	6" PCC Approach Pavement	-	12.0	27.0	39.0	SqYd
380E4010	6" PCC Fillet Section	-	200.1	-	200.1	SqYd
421E0100	Pipe Culvert Undercut	720	213	32	965	CuYd
450E0122	18" RCP Class 2, Furnish	9,668	392	862	10,922	Ft
450E0130	18" RCP, Install	9,668	392	862	10,922	Ft
450E0142	24" RCP Class 2, Furnish	3,166	214	206	3,586	Ft
450E0150	24" RCP, Install	3,166	214	206	3,586	Ft
450E0162	30" RCP Class 2, Furnish	776	424	-	1,200	Ft
450E0170	30" RCP, Install	776	424	-	1,200	Ft
450E0182	36" RCP Class 2, Furnish	142	706	114	962	Ft
450E0184	36" RCP Class 4, Furnish	64	-	-	64	Ft
450E0185	36" RCP Class 5, Furnish	64	-	-	64	Ft
450E0188	36" RCP Class 5000D, Furnish	164	-	-	164	Ft
450E0190	36" RCP, Install	434	706	114	1,254	Ft
450E0192	42" RCP Class 2, Furnish	368	40	-	408	Ft
450E0193	42" RCP Class 3, Furnish	70	-	-	70	Ft
450E0194	42" RCP Class 4, Furnish	80	-	-	80	Ft
450E0195	42" RCP Class 5, Furnish	120	-	-	120	Ft

Section B – Grading (continued)

Bid Item Number	Item	Quantity				Unit
		PCN 01V7 Veterans	PCN 08DG Southeastern	PCN 08DH Sycamore	Total	
450E0200	42" RCP, Install	638	40	-	678	Ft
450E0202	48" RCP Class 2, Furnish	630	-	-	630	Ft
450E0210	48" RCP, Install	630	-	-	630	Ft
450E0408	18" RCP Bend, Furnish	-	1	-	1	Each
450E0409	18" RCP Bend, Install	-	1	-	1	Each
450E0700	RCP Tee, Furnish	2	-	-	2	Each
450E0701	RCP Tee, Install	2	-	-	2	Each
450E2008	18" RCP Flared End, Furnish	-	3	4	7	Each
450E2009	18" RCP Flared End, Install	-	3	4	7	Each
450E2016	24" RCP Flared End, Furnish	6	5	1	12	Each
450E2017	24" RCP Flared End, Install	6	5	1	12	Each
450E2024	30" RCP Flared End, Furnish	4	-	-	4	Each
450E2025	30" RCP Flared End, Install	4	-	-	4	Each
450E2028	36" RCP Flared End, Furnish	4	-	6	10	Each
450E2029	36" RCP Flared End, Install	4	-	6	10	Each
450E2032	42" RCP Flared End, Furnish	6	1	-	7	Each
450E2033	42" RCP Flared End, Install	6	1	-	7	Each
450E2036	48" RCP Flared End, Furnish	5	-	-	5	Each
450E2037	48" RCP Flared End, Install	5	-	-	5	Each
450E3002	18" RCP Arch Class 2, Furnish	356	474	212	1,042	Ft
450E3010	18" RCP Arch, Install	356	474	212	1,042	Ft
450E3012	24" RCP Arch Class 2, Furnish	260	262	-	522	Ft
450E3020	24" RCP Arch, Install	260	262	-	522	Ft
450E4500	18" RCP Arch Flared End, Furnish	-	-	6	6	Each
450E4501	18" RCP Arch Flared End, Install	-	-	6	6	Each
450E4504	24" RCP Arch Flared End, Furnish	1	2	-	3	Each
450E4505	24" RCP Arch Flared End, Install	1	2	-	3	Each
450E4758	18" CMP 14 Gauge, Furnish	120	-	-	120	Ft
450E4760	18" CMP, Install	120	-	-	120	Ft
450E4768	24" CMP 14 Gauge, Furnish	52	-	-	52	Ft
450E4770	24" CMP, Install	52	-	-	52	Ft
450E5010	18" CMP Elbow, Furnish	2	-	-	2	Each
450E5011	18" CMP Elbow, Install	2	-	-	2	Each
450E5015	24" CMP Elbow, Furnish	2	-	-	2	Each
450E5016	24" CMP Elbow, Install	2	-	-	2	Each
450E5211	18" CMP Flared End, Furnish	1	-	-	1	Each
450E5212	18" CMP Flared End, Install	1	-	-	1	Each
450E5215	24" CMP Flared End, Furnish	1	-	-	1	Each
450E5216	24" CMP Flared End, Install	1	-	-	1	Each
450E8009	18" RCP to CMP Transition, Furnish	1	-	-	1	Each
450E8010	18" Pipe Transition, Install	1	-	-	1	Each
450E8014	24" RCP to CMP Transition, Furnish	1	-	-	1	Each
450E8015	24" Pipe Transition, Install	1	-	-	1	Each
451E0518	8" PVC Pipe	-	28	-	28	Ft
451E0522	12" PVC Pipe	-	-	44	44	Ft
462E0100	Class M6 Concrete	212.7	52.7	19.1	284.5	CuYd
464E0100	Controlled Density Fill	181.0	-	-	181.0	CuYd
480E0100	Reinforcing Steel	38,903	8,687	4,210	51,800	Lb

Section B – Grading (continued)

Bid Item Number	Item	Quantity				Unit
		PCN 01V7 Veterans	PCN 08DG Southeastern	PCN 08DH Sycamore	Total	
600E0300	Type III Field Laboratory	1	-	-	1	Each
620E0010	Type 1 Right-of-Way Fence	1,424	889	692	3,005	Ft
620E0020	Type 2 Right-of-Way Fence	747	-	2,560	3,307	Ft
620E0510	Type 1 Temporary Fence	124	-	-	124	Ft
620E0520	Type 2 Temporary Fence	-	-	439	439	Ft
620E1020	2 Post Panel	11	13	41	65	Each
620E1030	3 Post Panel	4	-	-	4	Each
628E1500	Concrete Barrier End Protection	4	-	-	4	Each
628E1510	Concrete Barrier End Protection Module Set or Repair Kit	2	-	-	2	Each
650E0059	Modified Type B66 Concrete Curb and Gutter	-	4,106	2,136	6,242	Ft
650E0100	Type B610 Concrete Curb and Gutter	480	-	-	480	Ft
650E0360	Type BL66 Concrete Curb and Gutter	-	4,143	2,516	6,659	Ft
650E0400	Type BL610 Concrete Curb and Gutter	368	-	-	368	Ft
650E1100	Type F610 Concrete Curb and Gutter	18,837	-	-	18,837	Ft
650E1400	Type FL610 Concrete Curb and Gutter	17,136	-	-	17,136	Ft
650E4700	Type P10 Concrete Gutter	316	-	-	316	Ft
650E6060	6" Concrete Valley Gutter	-	60	-	60	SqYd
651E0060	6" Concrete Sidewalk	8,105	34,139	17,081	59,325	SqFt
651E7000	Type 1 Detectable Warnings	256	96	-	352	SqFt
670E1200	Type B Frame and Grate	169	29	26	224	Each
670E2200	Type C Frame and Grate	9	-	-	9	Each
670E5202	Special Frame and Grate	2	-	-	2	Each
670E5340	4' x 11' Precast Concrete Type S Drop Inlet Lid	-	4	-	4	Each
670E5400	Precast Drop Inlet Collar	109	19	10	138	Each
671E6007	Type A7 Manhole Frame and Lid	-	5	-	5	Each
700E0110	Class A Riprap	170.2	-	-	170.2	Ton
700E0210	Class B Riprap	357.6	154.5	127.3	639.4	Ton
831E0110	Type B Drainage Fabric	690	218	163	1,071	SqYd
900E1150	Right of Way Marker	108	-	-	108	Each
998E0100	Railroad Protective Insurance	Lump Sum	-	-	Lump Sum	LS

REV DATE: 1/2/2025
INITIAL: KAO

FOR BIDDING PURPOSES ONLY

STATE OF SOUTH DAKOTA	PROJECT NH 0100(106)409 & P 8042(00)	SHEET A2	TOTAL SHEETS A9
-----------------------	---	-------------	--------------------

Section C – Traffic Control

Bid Item Number	Item	Quantity				Unit
		PCN 01V7 Veterans	PCN 08DG Southeastern	PCN 08DH Sycamore	Total	
260E0010	Granular Material	-	1,500.0	2,000.0	3,500.0	Ton
634E0110	Traffic Control Signs	73.0	248.5	73.0	394.5	SqFt
634E0120	Traffic Control Miscellaneous	Lump Sum	Lump Sum	Lump Sum	Lump Sum	LS
634E0135	Traffic Control Supervisor	Lump Sum	Lump Sum	Lump Sum	Lump Sum	LS
634E0275	Type 3 Barricade	10	-	-	10	Each
634E0420	Type C Advance Warning Arrow Board	-	1	-	1	Each
634E0560	Remove Pavement Marking, 4" or Equivalent	-	500	-	500	Ft
634E0640	Temporary Pavement Marking	-	800	-	800	Ft
634E1002	Detour and Restriction Signing	1,149.3	55.0	-	1,204.3	SqFt
634E1020	Temporary Business Signing	591.7	-	-	591.7	SqFt
634E1215	Contractor Furnished Portable Changeable Message Sign	2	2	-	4	Each
634E2000	Longitudinal Pedestrian Barricade	-	30	-	30	Ft
634E2020	Temporary Curb Ramp	-	1	-	1	Each
634E2025	Longitudinal Pedestrian Barrier	-	50	-	50	Ft
634E2050	Temporary Sidewalk	-	100	-	100	SqFt

Section D – Erosion & Sediment Control

Bid Item Number	Item	Quantity				Unit
		PCN 01V7 Veterans	PCN 08DG Southeastern	PCN 08DH Sycamore	Total	
110E1690	Remove Sediment	8.0	2.1	0.8	10.9	CuYd
110E1695	Remove Sediment Filter Bag	3,473	932	360	4,765	Ft
110E1700	Remove Silt Fence	8,884	1,488	1,920	12,292	Ft
120E6300	Water for Vegetation	19,569.9	1,903.3	2,505.7	23,978.9	MGal
230E0010	Placing Topsoil	193,150	14,845	9,637	217,632	CuYd
730E0100	Cover Crop Seeding	150.0	-	-	150.0	Bu
730E0206	Type D Permanent Seed Mixture	2,195	1,665	2,192	6,052	Lb
730E0212	Type G Permanent Seed Mixture	1,663	170	224	2,057	Lb
731E0100	Fertilizing	7,388	654	861	8,903	Lb
732E0100	Mulching	168.2	10.5	13.8	192.5	Ton
732E0300	Bonded Fiber Matrix	9.4	2.6	3.4	15.4	Ton
734E0044	Soil Stabilizer	20.0	-	-	20.0	Acre
734E0154	12" Diameter Erosion Control Wattle	844	-	-	844	Ft
734E0165	Remove and Reset Erosion Control Wattle	212	-	-	212	Ft
734E0180	Sediment Filter Bag	3,473	932	360	4,765	Ft
734E0325	Surfacing Roughening	8.6	-	-	8.6	Acre
734E0602	Low Flow Silt Fence	34,587	5,602	7,180	47,369	Ft
734E0604	High Flow Silt Fence	950	350	500	1,800	Ft
734E0610	Mucking Silt Fence	2,466	413	532	3,411	CuYd
734E0620	Repair Silt Fence	8,884	1,488	1,920	12,292	Ft
734E0680	Flocculent Housing Unit	2	-	-	2	Each
734E0683	500K Gallon Treatment Flocculent Bag	2	-	-	2	Each
734E0845	Sediment Control at Inlet with Frame and Grate	109	19	10	138	Each
734E0847	Sediment Control at Type S Reinforced Concrete Drop Inlet	-	48	-	48	Ft
734E5000	Dewatering	80	-	-	80	Hour
734E5010	Sweeping	80	20	20	120	Hour
900E1310	Concrete Washout Facility	3	1	1	5	Each
900E1320	Construction Entrance	8	2	2	12	Each

Section E – Structures

Section E – Structures

Structure No. 42-113-015, 42-123-015, 42-120-015, MSE Wire Face Retaining Wall, Barrier and Moment Slabs						
Bid Item Number	Item	Quantity				Unit
		PCN 01V7 Veterans	PCN 08DG Southeastern	PCN 08DH Sycamore	Total	
260E2010	Gravel Cushion	9.7	-	-	9.7	Ton
380E2400	Concrete Barrier with Concrete Reinforced Footing	1,967	-	-	1,967	Ft
420E0200	Structure Excavation, Box Culvert	261	47	-	308	CuYd
420E0300	Structure Excavation, Retaining Wall	170	-	-	170	CuYd
420E1000	Foundation Preparation, Retaining Wall	159	-	-	159	CuYd
421E0200	Box Culvert Undercut	750	188	-	938	CuYd
430E0700	Precast Concrete Headwall for Drain	3	-	-	3	Each
460E0120	Class A45 Concrete, Box Culvert	627.8	-	-	627.8	CuYd
460E0204	Anti-Graffiti Coating	12,549.0	-	-	12,549.0	SqFt
470E0230	Steel Bicycle Railing on Concrete Barrier	88.0	-	-	88.0	Ft
480E0100	Reinforcing Steel	114,408	-	-	114,408	Lb
530E0400	MSE Wire Face Wall	957	-	-	957	SqFt
530E0704	Granular Backfill for MSE Wire Face Wall	461.0	-	-	461.0	CuYd
560E0110	9' x 5' Precast Concrete Box Culvert, Furnish	-	138.0	-	138.0	Ft
560E0111	9' x 5' Precast Concrete Box Culvert, Install	-	138.0	-	138.0	Ft
560E1110	9' x 5' Precast Concrete Box Culvert End Section, Furnish	-	2	-	2	Ea
560E1111	9' x 5' Precast Concrete Box Culvert End Section, Install	-	2	-	2	Ea
621E0240	Special 4' Chain Link Fence	268	60	-	328	Ft
680E0040	4" Underdrain Pipe	1,655	-	-	1,655	Ft
680E2500	Porous Backfill	1,258.2	-	-	1,258.2	Ton
700E0210	Class B Riprap	-	28.0	-	28.0	Ton
734E2020	Bridge Berm Slope Protection, Coated Crushed Aggregate	125.0	-	-	125.0	SqYd
831E0110	Type B Drainage Fabric	-	40	-	40	SqYd
831E0300	Reinforcement Fabric (MSE)	227	-	-	227	SqYd
831E1010	Geogrid Reinforcement	522	-	-	522	SqYd

Structure No. 42-111-016						
Bid Item Number	Item	Quantity				Unit
		PCN 01V7 Veterans	PCN 08DG Southeastern	PCN 08DH Sycamore	Total	
420E0200	Structure Excavation, Box Culvert	170	-	-	170	CuYd
421E0200	Box Culvert Undercut	540	-	-	540	CuYd
560E2164	2-12'x5' Precast Concrete Box Culvert, Furnish	198.0	-	-	198.0	Ft
560E2165	2-12'x5' Precast Concrete Box Culvert, Install	198.0	-	-	198.0	Ft
560E3164	2-12'x5' Precast Concrete Box Culvert End Section, Furnish	2	-	-	2	Each
560E3165	2-12'x5' Precast Concrete Box Culvert End Section, Install	2	-	-	2	Each
621E0240	Special 4' Chain Link Fence	91	-	-	91	Ft
700E0210	Class B Riprap	44.8	-	-	44.8	Ton
831E0110	Type B Drainage Fabric	65	-	-	65	SqYd

Structure No. 42-115-015 (Bridge)						
Bid Item Number	Item	Quantity				Unit
		PCN 01V7 Veterans	PCN 08DG Southeastern	PCN 08DH Sycamore	Total	
009E3310	Bridge Elevation Survey	Lump Sum	-	-	Lump Sum	LS
009E5000	Concrete Penetrating Sealer	2,128.8	-	-	2,128.8	SqYd
120E7000	Select Granular Backfill	36.7	-	-	36.7	Ton
410E0020	Structural Steel	Lump Sum	-	-	Lump Sum	LS
410E2600	Membrane Sealant Expansion Joint	371.4	-	-	371.4	Ft
411E0100	Bridge Painting	Lump Sum	-	-	Lump Sum	LS
430E0200	Bridge End Embankment	4,034	-	-	4,034	CuYd
430E0300	Granular Bridge End Backfill	318.7	-	-	318.7	CuYd
430E0700	Precast Concrete Headwall for Drain	4	-	-	4	Each
460E0030	Class A45 Concrete, Bridge Deck	623.0	-	-	623.0	CuYd
460E0050	Class A45 Concrete, Bridge	259.6	-	-	259.6	CuYd
460E0150	Concrete Approach Slab for Bridge	412.6	-	-	412.6	SqYd
460E0160	Concrete Approach Sleeper Slab for Bridge	149.6	-	-	149.6	SqYd
460E0380	Install Dowel in Concrete	376	-	-	376	Each
460E0500	Deck Drain, Girder Bridge	8	-	-	8	Each
470E0030	Special Steel Railing	231.0	-	-	231.0	Ft
470E0230	Steel Bicycle Railing on Concrete Barrier	232.0	-	-	232.0	Ft
480E0100	Reinforcing Steel	26,866	-	-	26,866	Lb
480E0200	Epoxy Coated Reinforcing Steel	10,319	-	-	10,319	Lb
480E0300	Stainless Reinforcing Steel	136,381	-	-	136,381	Lb
510E0300	Preboring Pile	1,242	-	-	1,242	Ft
510E3621	HP 14x73 Steel Test Pile, Furnish and Drive	240	-	-	240	Ft
510E3625	HP 14x73 Steel Bearing Pile, Furnish and Drive	5,060	-	-	5,060	Ft
635E8040	4" Rigid Galvanized Steel Conduit	1,892	-	-	1,892	Ft
651E0160	6" Reinforced Concrete Sidewalk	220	-	-	220	Sqft
680E0040	4" Underdrain Pipe	296	-	-	296	Ft
680E1200	Fiberglass Drain Pipe	204	-	-	204	Ft
680E2500	Porous Backfill	13.0	-	-	13.0	Ton
734E2022	Bridge Berm Slope Protection, Quarried Aggregate	1,514.8	-	-	1,514.8	SqYd
831E1030	Perforated Geocell	1,050	-	-	1,050	SqFt

Structure No. 42-121-015						
Bid Item Number	Item	Quantity				Unit
		PCN 01V7 Veterans	PCN 08DG Southeastern	PCN 08DH Sycamore	Total	
420E0200	Structure Excavation, Box Culvert	200	-	-	200	CuYd
421E0200	Box Culvert Undercut	526	-	-	526	CuYd
460E0120	Class A45 Concrete, Box Culvert	436.6	-	-	436.6	CuYd
480E0100	Reinforcing Steel	89,124	-	-	89,124	Lb
621E0240	Special 4' Chain Link Fence	91	-	-	91	Ft
700E0210	Class B Riprap	53.0	-	-	53.0	Ton
831E0110	Type B Drainage Fabric	68	-	-	68	SqYd
831E0300	Reinforcement Fabric (MSE)	763	-	-	763	SqYd

FOR BIDDING PURPOSES ONLY

REV DATE: 1/3/2025
INITIAL: LRM

STATE OF SOUTH DAKOTA	PROJECT	SHEET	TOTAL SHEETS
	NH 0100(106)409 & P 8042(00)	A4	A9

Section F – Surfacing

Bid Item Number	Item	Quantity				Unit
		PCN 01V7 Veterans	PCN 08DG Southeastern	PCN 08DH Sycamore	Total	
120E6200	Water for Granular Material	603.9	242.5	188.3	1,034.7	MGal
260E1010	Base Course	5,850.0	18,960.4	14,702.2	39,512.6	Ton
260E2010	Gravel Cushion	44,301.8	1,040.4	756.1	46,098.3	Ton
320E0008	PG 64-34 Asphalt Binder	-	269.0	261.8	530.8	Ton
320E1060	Class G Asphalt Concrete	-	4,802.7	4,675.3	9,478.0	Ton
320E1200	Asphalt Concrete Composite	2,545.4	-	-	2,545.4	Ton
320E3000	Compaction Sample	-	3	3	6	Each
330E0100	SS-1h or CSS-1h Asphalt for Tack	-	7.4	6.9	14.3	Ton
330E0210	SS-1h or CSS-1h Asphalt for Flush Seal	-	3.1	2.9	6.0	Ton
330E2000	Sand for Flush Seal	-	57.7	54.3	112.0	Ton
380E0090	10" Nonreinforced PCC Pavement	95,854.4	-	-	95,854.4	SqYd
380E1070	10" Miscellaneous PCC Pavement	539.4	-	-	539.4	SqYd
380E6000	Dowel Bar	58,663	-	-	58,663	Each
831E0200	Woven Separator Fabric	-	19,417	18,249	37,665	SqYd

Section H – Landscaping

Bid Item Number	Item	Quantity				Unit
		PCN 01V7 Veterans	PCN 08DG Southeastern	PCN 08DH Sycamore	Total	
120E6300	Water for Vegetation	1,060.0	37.0	64.0	1,161.0	Mgal
230E0020	Contractor Furnished Topsoil	9,340	1,361	642	11,343	CuYd
730E0251	Special Permanent Seed Mixture 1	1,156	44	80	1,280	Lb
731E0100	Fertilizing	3,975	585	270	4,830	Lb
732E0200	Fiber Mulching	2.7	0.1	0.2	3.0	Ton
733E0100	Sodding	-	1,395	-	1,395	SqYd
735E0110	1 Gallon Perennial Plant, Furnish and Plant	984	-	-	984	Each
735E2225	2.5" Caliper Deciduous Tree, Furnish and Plant	-	30	15	45	Each
735E5010	1 Gallon Ornamental Grass, Furnish and Plant	1,487	137	76	1,700	Each
900E5150	Landscape Edging	1,212	42	23	1,277	Ft
900E5152	Weed Barrier Fabric	606	-	-	606	SqYd
900E5157	4" Depth Shredded Bark Mulch	692.0	154.0	88.0	934.0	SqYd
900E5430	Irrigation System	-	Lump Sum	-	Lump Sum	LS

All Items Non-Participating

Section L – Lighting

LIGHTING						
Bid Item Number	Item	Quantity				Unit
		PCN 01V7 Veterans	PCN 08DG Southeastern	PCN 08DH Sycamore	Total	
110E1540	Remove Luminaire Pole Footing	-	1	-	1	Each
110E5100	Salvage Luminaire Pole	-	1	-	1	Each
635E0050	Breakaway Base Luminaire Pole with Arm, 50' Mounting Height	67	-	-	67	Each
635E0140	Breakaway Base Luminaire Pole with Twin Arms, 40' Mounting Height	-	12	8	20	Each
635E0150	Breakaway Base Luminaire Pole with Twin Arms, 50' Mounting Height	2	-	-	2	Each
635E3545	Under Bridge Deck Luminaire, LED	4	-	-	4	Each
635E3585	Tunnel Luminaire, LED	24	-	-	24	Each
635E3700	Roadway Luminaire, LED with Photoelectric Cell	80	24	16	120	Each
635E5020	2' Diameter Footing	554.0	96.0	64.0	714.0	Ft
635E5310	Special Electrical Junction Box	42	3	-	45	Each
635E5360	Surface Mounted Junction Box	2	-	-	2	Each
635E5400	Electrical Service Cabinet	4	-	-	4	Each
635E5420	Circuit Control Center	3	-	-	3	Each
635E6200	Miscellaneous, Electrical	Lump Sum	Lump Sum	Lump Sum	Lump Sum	LS
635E7899	Locator Ball	-	1	1	2	Each
635E8008	0.75" Rigid Galvanized Steel Conduit	880	-	-	880	Ft
635E8040	4" Rigid Galvanized Steel Conduit	2,310	-	-	2,310	Ft
635E8120	2" Rigid Conduit, Schedule 40	21,775	2,430	1,440	25,645	Ft
635E8220	2" Rigid Conduit, Schedule 80	2,730	560	220	3,510	Ft
635E8830	2/2/2/4 Aluminum Wire	25,940	2,880	1,590	30,410	Ft
635E8900	3/C #0000 AWG Aluminum Wire	935	-	-	935	Ft
635E9014	1/C #4 AWG Copper Wire	1,535	-	-	1,535	Ft
635E9016	1/C #6 AWG Copper Wire	-	500	200	700	Ft
635E9020	1/C #10 AWG Copper Wire	4,170	-	-	4,170	Ft
635E9024	1/C #14 AWG Copper Wire	1,770	145	120	2,035	Ft
635E9710	2/C #10 AWG Copper Pole and Bracket Cable	5,440	1,320	880	7,640	Ft

Section L – Traffic Signals

TRAFFIC SIGNALS						
Bid Item Number	Item	Quantity				Unit
		PCN 01V7 Veterans	PCN 08DG Southeastern	PCN 08DH Sycamore	Total	
635E2070	Signal Pole with 70' Mast Arm	1	-	-	1	Each
635E2165	Signal Pole with 65' Mast Arm and Luminaire Arm	2	-	-	2	Each
635E2170	Signal Pole with 70' Mast Arm and Luminaire Arm	1	-	-	1	Each
635E2175	Signal Pole with 75' Mast Arm and Luminaire Arm	2	-	-	2	Each
635E2275	Signal Pole with 75' Mast Arm and Twin Luminaire Arms	2	-	-	2	Each
635E4030	3 Section Vehicle Signal Head	34	-	-	34	Each
635E4040	4 Section Vehicle Signal Head	4	-	-	4	Each
635E4080	3 Section Directional Vehicle Signal Head	18	-	-	18	Each
635E5030	3' Diameter Footing	28.0	-	-	28.0	Ft
635E5040	4' Diameter Footing	90.0	-	-	90.0	Ft
635E5310	Special Electrical Junction Box	44	9	4	57	Each
635E5430	Traffic Signal Controller	2	-	-	2	Each
635E5450	Side Mounted Cabinet	4	-	-	4	Each
635E5515	Battery Backup System for Traffic Signal	2	-	-	2	Each
635E5520	Video Detection System	2	-	-	2	Each
635E5560	Emergency Vehicle Preemption Unit	2	-	-	2	Each
635E5570	Optical Detector	8	-	-	8	Each
635E5600	Surveillance Camera	4	-	-	4	Each
635E5880	Accessible Pedestrian Signal	16	-	-	16	Each
635E5910	Pedestrian Push Button Pole	16	-	-	16	Each
635E5922	Timer	16	-	-	16	Each
635E5930	Pedestrian Crossing Sign	16	-	-	16	Each
635E6500	* Furnish Signal Pole with Mast Arm	2	-	-	2	Each
635E8040	4" Rigid Galvanized Steel Conduit	335	-	-	335	Ft
635E8110	1" Rigid Conduit, Schedule 40	405	-	-	405	Ft
635E8120	2" Rigid Conduit, Schedule 40	155	-	-	155	Ft
635E8140	4" Rigid Conduit, Schedule 40	310	-	-	310	Ft
635E8230	3" Rigid Conduit, Schedule 80	2,290	525	45	2,860	Ft
635E8410	1/2" Innerduct, SDR 13.5	-	4,850	-	4,850	Ft
635E8415	1" Innerduct, SDR 13.5	22,910	4,940	2,610	30,460	Ft
635E8420	1.5" Innerduct, SDR 13.5	290	-	-	290	Ft
635E9016	1/C #6 AWG Copper Wire	180	-	-	180	Ft
635E9022	1/C #12 AWG Copper Wire	14,655	3,395	2,660	20,710	Ft
635E9302	2/C #14 AWG IMSA Copper Cable, K1	565	-	-	565	Ft
635E9303	3/C #14 AWG IMSA Copper Cable, K1	240	-	-	240	Ft
635E9305	5/C #14 AWG IMSA Copper Cable, K1	3,295	-	-	3,295	Ft
635E9307	7/C #14 AWG IMSA Copper Cable, K1	220	-	-	220	Ft
635E9325	25/C #14 AWG IMSA Copper Cable, K1	2,305	-	-	2,305	Ft
635E9800	Preemption Cable	6,050	-	-	6,050	Ft
635E9924	24 Strand Fiber Optic Cable	12,700	8,550	-	21,250	Ft

* - Denotes Non-Participating

Section M – Pavement Markings

Bid Item Number	Item	Quantity				Unit
		PCN 01V7 Veterans	PCN 08DG Southeastern	PCN 08DH Sycamore	Total	
633E0010	Cold Applied Plastic Pavement Marking, 4"	8,337	3,092	9,730	21,159	Ft
633E0019	Cold Applied Plastic Pavement Marking, 4" with Contrast Border	15,626	950	530	17,106	Ft
633E0030	Cold Applied Plastic Pavement Marking, 24"	80	94	110	284	Ft
633E0040	Cold Applied Plastic Pavement Marking, Arrow	43	19	7	69	Each
633E0211	Preformed Thermoplastic Pavement Marking, 4" with Contrast Border	204	-	-	204	Ft
633E0225	Preformed Thermoplastic Pavement Marking, 24"	1,788	78	32	1,898	Ft
633E5000	Grooving for Cold Applied Plastic Pavement Marking, 4"	8,337	3,092	9,730	21,159	Ft
633E5004	Grooving for Cold Applied Plastic Pavement Marking, 4" with Contrast Border	15,830	950	530	17,310	Ft
633E5015	Grooving for Cold Applied Plastic Pavement Marking, 24"	1,868	172	142	2,182	Ft
633E5025	Grooving for Cold Applied Plastic Pavement Marking, Arrow	43	19	7	69	Each

Section S – Permanent Signing

Bid Item Number	Item	Quantity				Unit
		PCN 01V7 Veterans	PCN 08DG Southeastern	PCN 08DH Sycamore	Total	
110E0135	Remove Delineator	-	3	-	3	Each
110E5020	Salvage Traffic Sign	11	2	-	13	Each
110E7150	Remove Sign for Reset	-	1	-	1	Each
632E1320	2.0"x2.0" Perforated Tube Post	70.8	107.0	125.1	302.9	Ft
632E2020	4"x4" White Delineator with 1.12 Lb/Ft Post	-	4	9	13	Each
632E2024	4"x8" White Delineator with 1.12 Lb/Ft Post	-	4	9	13	Each
632E2510	Type 2 Object Marker Back to Back	31	16	13	60	Each
632E3203	Flat Aluminum Sign, Nonremovable Copy High Intensity	203.0	49.0	43.0	295.0	SqFt
632E3205	Flat Aluminum Sign, Nonremovable Copy Super/Very High Intensity	112.5	36.0	36.0	184.5	SqFt
632E3500	Reset Sign	-	1	-	1	Each
632E4005	Type 3 Single Sided Barricade	72.0	-	-	72.0	Ft

SPECIFICATIONS

Standard Specifications for Roads & Bridges, 2015 Edition and Required Provisions, Supplemental Specifications and Special Provisions as included in the Proposal.

The most current edition of the City of Sioux Falls General Conditions for Public Improvements and Supplemental Standard Specifications, City Standard Plates and required provisions, supplemental specifications, and/or special provisions as included in the Special Provisions.

ENVIRONMENTAL COMMITMENTS

The SDDOT is committed to protecting the environment and uses Environmental Commitments as a communication tool for the Engineer and Contractor to ensure that attention is given to avoid, minimize, and/or mitigate an environmental impact. Environmental commitments to various agencies and the public have been made to secure approval of this project. An agency with permitting authority can delay a project if identified environmental impacts have not been adequately addressed. Unless otherwise designated, the Contractor's primary contact regarding matters associated with these commitments will be the Project Engineer. During construction, the Project Engineer will verify that the Contractor has met Environmental Commitment requirements. These environmental commitments are not subject to change without prior written approval from the SDDOT Environmental Office.

Additional guidance on SDDOT's Environmental Commitments can be accessed through the Environmental Procedures Manual found at: <https://dot.sd.gov/media/documents/EnvironmentalProceduresManual.pdf> >

For questions regarding change orders in the field that may have an effect on an Environmental Commitment, the Project Engineer will contact the Environmental Engineer at 605-773-3180 or 605-773-4336 to determine whether an environmental analysis and/or resource agency coordination is necessary.

Once construction is complete, the Project Engineer will review all environmental commitments for the project and document their completion.

COMMITMENT A: WETLANDS

All efforts to avoid and minimize wetland impacts from the project have resulted in approximately 20.36 acres of wetlands (includes temporary and permanent) becoming impacted. Refer to Section B – Grading Plans for location and boundaries of the impacted wetlands.

Table of Impacted Wetlands (Veterans Parkway)

Wetland No.	Station	Permanent Impact (Acres)	Temp. Impact (Acres)	Total Impact (Acres)
23a-c	324+00 to 341+00 (L/R)	4.12	0.40	4.52
24a-c	343+00 to 354+00 (L/R)	2.59	0.53	3.12
25	355+50 to 358+00 (L/R)	0.23	0.12	0.35
26a-c	371+00 to 393+00 (R)	5.73	1.18	6.91
28a-b	419+00 to 427+00 (L/R)	1.37	0.27	1.64
29	324+00 to 341+00 (L/R)	0.93	0.42	1.35
Totals		14.97	2.92	17.89

Table of Impacted Wetlands (Southeastern Avenue)

Wetland No.	Station	Permanent Impact (Acres)	Temp. Impact (Acres)	Total Impact (Acres)
6-1a-f	601+00 – 613.50 (L/R)	0.61	0.14	0.75
6-2	624+00 – 627.00 (R)	0.20	0.06	0.26
Totals		0.81	0.20	1.01

Table of Impacted Wetlands (Sycamore Avenue)

Wetland No.	Station	Permanent Impact (Acres)	Temp. Impact (Acres)	Total Impact (Acres)
7-5 – 7-8	700+00 – 707+50 (L/R)	0.97	0.19	1.16
7-2 & 7-3	718+00 – 720+50 (L/R)	0.15	-	0.15
7-4	733+50 – 735+75 (L)	0.10	0.05	0.15
Totals		1.22	0.24	1.46

Action Taken/Required:

SDDOT will acquire credits equivalent to 17 acres from a wetland mitigation bank site or In-Lieu Fee program within the lower Big Sioux River Geographic Service Area to mitigate permanent impacts.

Temporary impacts identified in the Table of Impacted Wetlands will not be mitigated as original contours and elevations will be re-established as designated in Section B – Grading Plans. Prior to initiating temporary work in wetlands, the Contractor will submit a plan to the Project Engineer in accordance with Section 7.21 D of the Specifications.

COMMITMENT B: FEDERALLY THREATENED, ENDANGERED, AND PROTECTED SPECIES

COMMITMENT B5: NORTHERN LONG-EARED BAT

This project is within the range of suitable habitat for the Northern Long-Eared Bat (NLEB) and project work will avoid conflicts with NLEB roosting habitat.

Action Taken/Required:

Project activities that include tree removal, structure work, and/or work within one-quarter mile of a known hibernacula or 150 feet of a known maternity roost tree, or suitable habitat should not occur within the location(s) listed below during the NLEB seasonal work restriction timeframe without approval from the SDDOT Environmental Office.

Station	NLEB Seasonal Work Restriction
Veterans Parkway 350+00 to 353+00 (L/R) 391+20 (L) 402+00 to 407+00 (L/R) 414+00 to 419+00 (L/R) 425+00 to 429+00 (L/R)	April 1 to October 31
Southeastern Avenue 624+00 – 627+00 (R)	April 1 to October 31
Sycamore Avenue 709+00 – 715+50 (L/R) 715+50 – 725+00 (R)	April 1 to October 31

Tree removal will occur between November 1st and March 31st and avoid the summer maternity season.

The following avoidance, minimization, and mitigation measures are required:

General AMM 1. All operators, employees, and contractors working in areas of known or presumed bat habitat will be made aware of all environmental commitments as they relate to the northern long-eared bat.

Lighting AMM 1. Temporary lighting will be directed away from suitable habitat during the active season.

Lighting AMM 2. When installing new or replacing existing permanent lights, downward-facing, full cut-off lens lights (with same intensity or less for replacement lighting) will be used

Tree Removal AMM 2. Tree removal will occur between November 1st and March 31st, outside the species summer roosting season. The City of Sioux Falls will cut down standing trees within the project temporary easement and work limits prior to April 1, 2024.



STATE OF SOUTH DAKOTA	PROJECT NH 0100(106)409 & P 8042(00)	SHEET A7	TOTAL SHEETS A9
-----------------------	---	-------------	--------------------

Plotting Date: 12/5/2024

REV DATE: 12/5/2024
INITIAL: JHU

COMMITMENT B6: MIGRATORY BIRDS WORK RESTRICTION

Migratory birds are known to use the project area for nesting, which primarily occurs from April 1st to July 15th.

Action Taken/Required:

The City of Sioux Falls will mow tall grass and cut down standing trees within the project temporary easement and work limits prior to April 1, 2024.

The Contractor is responsible for contracting the services of a qualified biologist for conducting preconstruction migratory bird surveys in suitable areas that have not been mowed or cleared before April 1st to determine if there are current nests and to determine offsetting measures to compensate for impacts to migratory birds. Contractor will coordinate the survey findings with the Project Engineer. If any nests are found, appropriate minimization measures will need to be developed in cooperation with the Environmental Office.

Construction activities should not occur in the locations listed in the table below during the migratory bird work restriction without prior approval from the SDDOT Environmental Office to avoid conflicts with nesting migratory birds.

Station	Migratory Bird Restriction
Veterans Parkway 325+00 to 352+00 (L/R) 378+00 to 392+00 (L/R) 402+00 to 413+00 (L) 413+00 to 430+00 (L/R)	April 1 to July 15
Southeastern Avenue 624+00 – 627+00 (R) 601+00 – 610+00 (R)	April 1 to July 15
Sycamore Avenue 700+00 – 715+50 (L) 715+50 – 725+00 (R)	April 1 to July 15

COMMITMENT C: WATER SOURCE

The Contractor will not withdraw water with equipment previously used outside the State of South Dakota or previously used in aquatic invasive species (AIS) positive waters within South Dakota without prior approval from the SDDOT Environmental Office. To prevent and control the introduction and spread of invasive species into the project vicinity, all equipment will be power washed with hot water (≥140 °F) and completely dried for a minimum of 7 days prior to subsequent use. South Dakota administrative rule 41:10:04:02 forbids the possession and transport of AIS; therefore, all attached dirt, mud, debris and vegetation must be removed and all compartments and tanks capable of holding standing water must be drained. This includes, but is not limited to, all equipment, pumps, lines, hoses and holding tanks.

The Contractor will not withdraw water directly from streams of the James, Big Sioux, and Vermillion watersheds without prior approval from the SDDOT Environmental Office.

Action Taken/Required:

The Contractor will obtain the necessary permits from the regulatory agencies such as the South Dakota Department of Agriculture and Natural Resources (DANR) and the United States Army Corps of Engineers (USACE) prior to water extraction activities.

Additional information and mapping of water sources impacted by Aquatic Invasive Species in South Dakota can be accessed at:
< <http://sdleastwanted.com/maps/default.aspx> >

< [South Dakota Administrative Rule 41:10:04 Aquatic Invasive Species](https://sdlegislature.gov/rules/DisplayRule.aspx?Rule=41:10:04): <https://sdlegislature.gov/rules/DisplayRule.aspx?Rule=41:10:04> >

COMMITMENT D: WATER QUALITY STANDARDS

COMMITMENT D1: SURFACE WATER QUALITY

All wetlands are classified as fish and wildlife propagation, recreation, irrigation, and stock watering waters. Because of these beneficial uses, special construction measures may have to be taken to ensure that wetlands are not impacted.

This project may be in the vicinity of multiple streams and wetlands. These waters are considered waters of the state and are protected under Administrative Rules of South Dakota (ARSD) Chapter 74:51. Special construction measures may have to be taken to ensure that water quality is not impacted.

Action Taken/Required:

The Contractor is advised that the South Dakota Surface Water Quality Standards, administered by the South Dakota Department of Agriculture and Natural Resources (DANR), apply to this project. Special construction measures will be taken to ensure the above standard(s) of the surface waters are maintained and protected.

COMMITMENT D2: SURFACE WATER DISCHARGE

The DANR General Permit for Temporary Discharge is required for temporary dewatering and discharges to waters of the state. The effluent limit for total suspended solids will be 90 mg/L 30-day average. The effluent limit applies to discharges to all waters of the state except discharges to waters classified as cold water permanent fish life propagation waters according to the ARSD 74:51:01:45. For discharges to waters of the state classified as cold water permanent fish life propagation waters, the effluent limit for total suspended solids will be 53 mg/L daily maximum.

The permittee has the option of completing effluent testing or implementing a pollution prevention plan for compliance with this permit. If the permittee develops a pollution prevention plan instead of total suspended solids sampling, the plan must be developed and implemented prior to discontinuing total suspended solids sampling. Refer to Section 4.0 of the permit. If any pollutants are suspected of being discharged, a sample must be taken for those parameters listed in Section 3.4 of the permit.

Action Taken/Required:

If construction dewatering is required and this project is currently covered under a General Permit for Stormwater Discharges Associated with Construction Activities, the contractor will need to submit the dewatering information to the SDDANR using the following form:
<https://danr.sd.gov/OfficeOfWater/SurfaceWaterQuality/docs/DANR_AddTempInfoFillable.pdf>

The Contractor will provide a copy of the approved permit or the submitted dewatering information to the Project Engineer prior to proceeding with any dewatering activities. The approved permit or submitted dewatering information must be kept on-site and as part of the project records.

Effluent monitoring, as a result of dewatering activities, will be summarized for each month and recorded on a separate Discharge Monitoring Report (DMR) and submitted to DANR monthly. Additional information can be found at:
< <http://denr.sd.gov/des/sw/WhatisaDMR.aspx> >

COMMITMENT E: STORM WATER

Construction activities constitute 1 acre or more of earth disturbance.

Action Taken/Required:

At a minimum and regardless of project size, appropriate erosion and sediment control measures must be installed to control the discharge of pollutants from the construction site.

Action Taken/Required:

The DANR General Permit for Stormwater Discharges Associated with Construction Activities is required for construction activity disturbing one or more acres of earth and work in a waterway. The SDDOT is the owner of this permit and will submit the NOI to DANR 15 days prior to project start in order to obtain coverage under the General Permit. Work can begin once the DANR letter of approval is received.

The Contractor must adhere to the “Special Provision Regarding Storm Water Discharges to Waters of the State.”

The Contractor will complete the DANR Contractor Certification Form prior to the pre-construction meeting. The form certifies under penalty of law that the Contractor understands and will comply with the terms and conditions of the permit for this project. Work may not begin on this project until this form is signed and submitted to DANR.

The form can be found at:
https://danr.sd.gov/OfficeOfWater/SurfaceWaterQuality/docs/DANR_CGPAppendixCCA2018Fillable.pdf

The Contractor is advised that permit coverage may also be required for off-site activities, such as borrow and staging areas, which are the responsibility of the Contractor.



COMMITMENT E: STORM WATER (CONTINUED)

Storm Water Pollution Prevention Plan

The Storm Water Pollution Prevention Plan (SWPPP) will be developed prior to the submittal of the NOI and will be implemented for all construction activities for compliance with the permit. The SWPPP must be kept on-site and updated as site conditions change. Erosion control measures and best management practices will be implemented in accordance with the SWPPP.

The DOT 298 Form will be used for site inspections and to document changes to the SWPPP. A copy of the completed inspection form will be filed with the SWPPP documents and retained for a minimum of three years.

The inspection will include disturbed areas of the construction site that have not been finally stabilized, areas used for storage materials, structural control measures, and locations where vehicles enter or exit the site. These areas will be inspected for evidence of, or the potential for, pollutants entering the drainage system. Erosion and sediment control measures identified in the SWPPP will be observed to ensure that they are operating correctly, and sediment is not tracked off the site.

Information on storm water permits and SWPPPs are available on the following websites:

SDDOT: < <https://dot.sd.gov/doing-business/environmental/stormwater> >

DANR: < <https://danr.sd.gov/OfficeOfWater/SurfaceWaterQuality/stormwater/default.aspx> >

EPA: < <https://www.epa.gov/npdes> >

COMMITMENT G: DEWATERING AND SEDIMENT COLLECTION

The purpose of a dewatering and sediment collection system is to collect turbid stormwater on the project, treat it with flocculants as needed, and capture the sediment that falls out of suspension before the water is discharged into "Waters of the US" or "Waters of the State". Refer to Commitment D1: Surface Water Quality for stream classification.

Action Taken/Required:

The Contractor will meet the terms of the Temporary Discharge Permit and the Storm Water Permit for Construction Activities.

The Contractor will create a Pollution Prevention Plan (PPP) for dewatering and sediment collection if the Contractor chooses to discharge the water into "Waters of the US" or "Waters of the State". The PPP must be kept on-site and updated as site conditions change.

COMMITMENT H: WASTE DISPOSAL SITE

The Contractor shall furnish a site(s) for the disposal of construction and/or demolition debris generated by this project.

Action Taken/Required:

Construction and/or demolition debris may not be disposed of within the ROW.

The waste disposal site(s) will be managed and reclaimed in accordance with the following from the General Permit for Construction/Demolition Debris Disposal Under the South Dakota Waste Management Program issued by the Department of Agriculture and Natural Resources.

The waste disposal site(s) will not be located in a wetland, within 200 feet of surface water, or in an area that adversely affects wildlife, recreation, aesthetic value of an area, or any threatened or endangered species, as approved by the Environmental Office and the Project Engineer.

If the waste disposal site(s) is located such that it is within view of any ROW, the following additional requirements will apply:

1. Construction and/or demolition debris consisting of concrete, asphalt concrete, or other similar materials will be buried in a trench separate from wood debris. The final cover over the construction and/or demolition debris will consist of a minimum of 1 foot of soil capable of supporting vegetation. Waste disposal sites provided outside of the Public ROW will be seeded in accordance with Natural Resources Conservation Service recommendations. The seeding recommendations may be obtained through the appropriate County NRCS Office. The Contractor will control the access to waste disposal sites not within the Public ROW with fences, gates, and placement of a sign or signs at the entrance to the site stating, "No Dumping Allowed".

2. Concrete and asphalt concrete debris may be stockpiled within view of the ROW for a period not to exceed the duration of the project. Prior to project completion, the waste will be removed from view of the ROW or buried, and the waste disposal site reclaimed as noted above.

The above requirements will not apply to waste disposal sites that are covered by an individual solid waste permit as specified in SDCL 34A-6-58, SDCL 34A-6-1.13, and ARSD 74:27:10:06.

Failure to comply with the requirements stated above may result in civil penalties in accordance with South Dakota Solid Waste Law, SDCL 34A-6-1.31.

All costs associated with furnishing waste disposal site(s), disposing of waste, maintaining control of access (fence, gates, and signs), and reclamation of the waste disposal site(s) will be incidental to the various contract items.

COMMITMENT I: HISTORICAL PRESERVATION OFFICE CLEARANCES

The SDDOT has obtained concurrence with the State Historic Preservation Office (SHPO) for all work included within the project limits and all department designated sources and designated option material sources, stockpile sites, storage areas, and waste sites provided within the plans.

Description	Station	L / R
Borrow Pit No. 2 (Cliff Avenue site)	325+00 – 352+00	R
Borrow Pit No. 5"	462+00 to 471+00	R/L

Action Taken/Required:

All earth disturbing activities not designated within the plans require a cultural resource review prior to scheduling the pre-construction meeting. This work includes but is not limited to: Contractor furnished material sources, material processing sites, stockpile sites, storage areas, plant sites, and waste areas.

The Contractor will arrange and pay for a record search and when necessary, a cultural resource survey. The Contractor has the option to contact the state Archaeological Research Center (ARC) at 605-394-1936 or another qualified archaeologist, to obtain either a records search or a cultural resources survey. A record search might be sufficient for review if the site was previously surveyed; however, a cultural resources survey may need to be conducted by a qualified archaeologist.

The Contractor will provide ARC with the following: a topographical map or aerial view in which the site is clearly outlined, site dimensions, project number, and PCN. If applicable, provide evidence that the site has been previously disturbed by farming, mining, or construction activities with a landowner statement that artifacts have not been found on the site.

The Contractor will submit the cultural resources survey report to SDDOT Environmental Office, 700 East Broadway Avenue, Pierre, SD 57501-2586. SDDOT will submit the information to the appropriate SHPO. Allow **30 Days** from the date this information is submitted to the Environmental Engineer for SHPO review.

In the event of an inadvertent discovery of human remains, funerary objects, or if evidence of cultural resources is identified during project construction activities, then such activities within 100 feet of the inadvertent discovery will immediately cease and the Project Engineer will be immediately notified. The Project Engineer will contact the SDDOT Environmental Office, who will contact the appropriate SHPO within 48 hours of the discovery to determine an appropriate course of action.

SHPO review does not relieve the Contractor of the responsibility for obtaining any additional permits and clearances for Contractor furnished material sources, material processing sites, stockpile sites, storage areas, plant sites, and waste areas that affect wetlands, threatened and endangered species, or waterways. The Contractor will not utilize a site known or suspected of having contaminated soil or water. The Contractor will provide the required permits and clearances to the Project Engineer at the preconstruction meeting



STATE OF SOUTH DAKOTA	PROJECT	SHEET	TOTAL SHEETS
	NH 0100(106)409 & P 8042(00)	A9	A9

Plotting Date: 12/5/2024

REV DATE: 12/5/2024
INITIAL: JHU

COMMITMENT M: SECTION 4(f)/6(f) RESOURCES

COMMITMENT M1: SECTION 4(f) PROPERTY

A Section 4(f) Evaluation concluded there are no feasible and prudent alternatives to avoiding Section 4(f) property located within the project.

Station	L/R	Section 4(f) Property
380+00 to 388+00	R	KSOO Radio Transmission Tower

Action Taken/Required:

The following measures are required to minimize harm to the above Section 4(f) property: Construction plan sheets address the location adjacent to proposed construction limits to protect the existing 4(f) resource; the staging and/or storage of construction equipment or materials shall not take place outside proposed construction limits that are within or adjacent to the defined boundaries of the 4(f) resource.

The Contractor will notify the Project Engineer if additional easement is needed to complete the work adjacent to any Section 4(f) property. The Project Engineer will obtain an appropriate course of action from the Environmental Office before proceeding with construction activities that affect any Section 4(f) property.

COMMITMENT N: SECTION 404 PERMIT

The SDDOT has obtained a Section 404 Permit from the USACE for the permanent actions associated with this project.

Action Taken/Required:

The Contractor will comply with all requirements contained in the Section 404 Permit.

The Contractor will also be responsible for obtaining a Section 404 Permit for any dredge, excavation, or fill activities associated with material sources, storage areas, waste sites, and Contractor work sites outside the plan work limits that affect wetlands, floodplains, or waters of the United States.

COMMITMENT O: SECTION 401 WATER QUALITY CERTIFICATION

The SDDOT has obtained a Clean Water Act Section 401 Water Quality Certification from the Environmental Protection Agency (EPA) regarding an US Army Corp of Engineers CWA Section 404 Permit for the actions associated with this project.

Action Taken/Required:

The Contractor will comply with all requirements contained in the Section 401 certification. A copy of the EPA CWA 401 Certification must be retained on-site.

COMMITMENT Q: ARCHAEOLOGICAL COORDINATION

As a result of a Cultural Resources Survey, historically sensitive areas have been identified within and/or adjacent to the project rights-of-way.

The following historically sensitive sites have been identified that require avoidance of construction activities:

Table of Historic/Archaeological Sites

Station	L/R	Environmental Sensitive Site	Action
380+00 to 388+00	R	KSOO Radio Transmission Tower	Do Not Disturb

The locations and boundaries of the site for avoidance are shown in Section B - Grading Plans.

Action Taken/Required:

If evidence for cultural resources is uncovered during project construction activities, then such activities within 150 feet of the inadvertent discovery will immediately cease and the Project Engineer will be immediately notified. The Project Engineer will contact the SDDOT Environmental Office, who will consult with the Archaeological Research Center (ARC) and FHWA, to determine the appropriate course of action.

All artifacts, features, or other items of interest uncovered by project construction activities will not be displaced unless the landowner and the SHPO consent to it.

These identified sites cannot be used for material sources, storage areas, waste sites, and/or any other project related activities outside the plan work limits.

COMMITMENT T2: CITY OF SIOUX FALLS SOUND PERMIT

This commitment applies should construction be conducted between the hours of 6:00 a.m. and 10:30 p.m.

Action Taken/Required:

The contractor must obtain a City sound permit in accordance with City ordinance § 93.006 and adhere to the permit conditions.