

November 8, 2024

Re: Project's NH-CR 0014(185)229, 436() – PCN's 026Z & X05W– Urban Grading, Curb & Gutter, Sidewalk, Signals, Storm Sewer, Lighting, Asphalt Concrete Surfacing, PCC Surfacing, Water Main Improvement & Sewer Manhole Adjustments

To Whom It May Concern,

A pre-bid meeting for the US 14 (Euclid Ave) Reconstruction project is being held on November 26th at 1:30 PM CST via Microsoft TEAMS. Interested contracting parties are invited to attend the meeting virtually via the Microsoft Teams Meeting Link provided below.

This meeting will include a presentation of the project covering topics such as the overall scope of work, design aspects, traffic control, and contract time. There will be an opportunity for Contractors to present questions to Department staff, consultants, and project stakeholders.

Attendance is not a requirement, but all interested contracting parties are strongly encouraged to attend.

If attending the meeting you must join the meeting via the link provided. In order to reduce sound feedback please mute the microphone on your computer. Due to the meeting being virtual we are requesting that you please enter the name of your company followed by the individuals from your company attending the meeting into the chat feature of Microsoft Teams.

[Join Pre-bid Meeting](#)

Date: November 26, 2024

Time: 1:30-3:30 PM (CST)

Meeting ID: 211 221 837 478

Additional instructions regarding the meeting format will be provided at the beginning of the meeting.

We look forward to seeing you there!

Sincerely,
SD DOT

SECTION S: SIGNING PLANS

STATE OF SOUTH DAKOTA	PROJECT NH-CR 0014(185)229	SHEET S1	TOTAL SHEETS S7
-----------------------	-------------------------------	-------------	--------------------

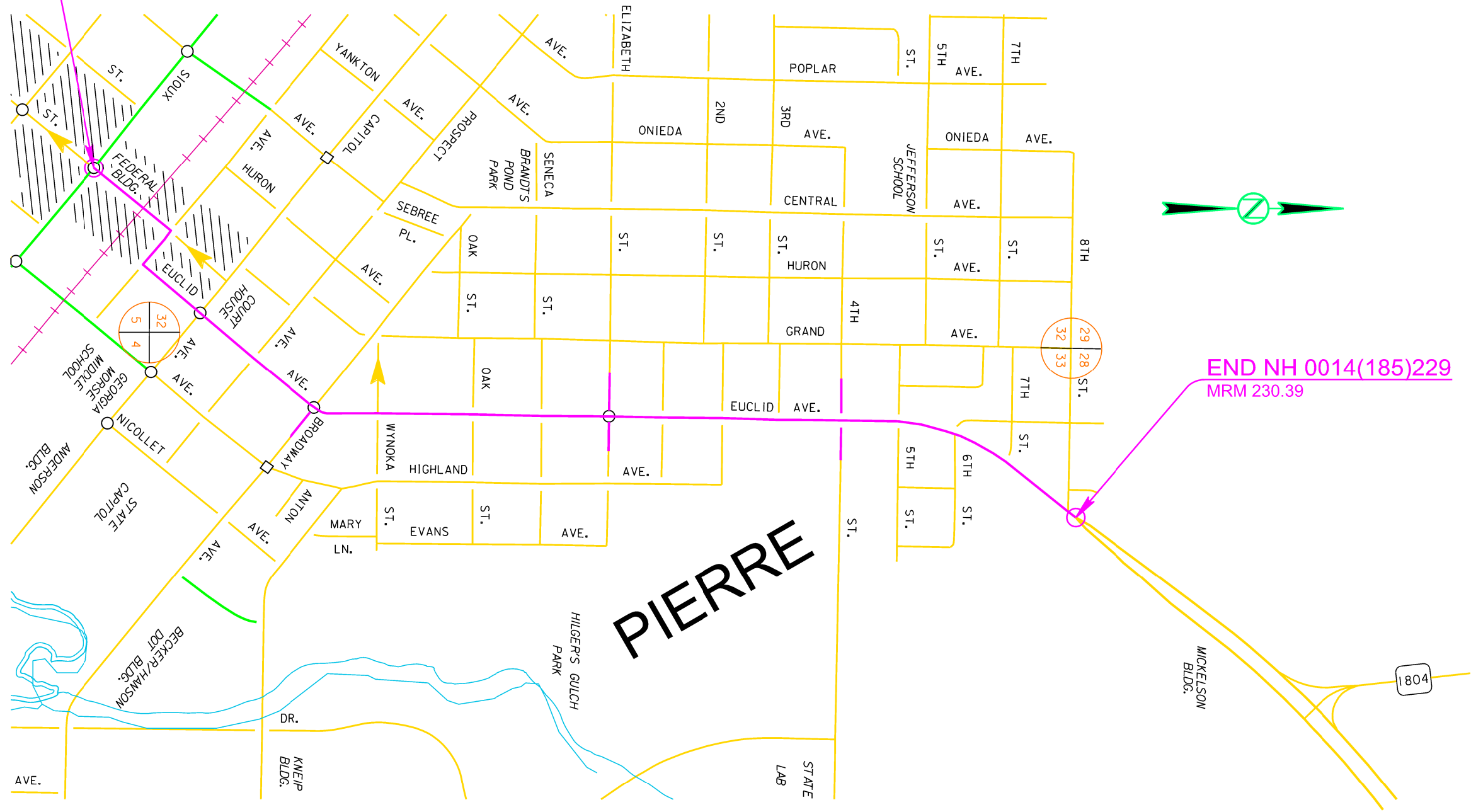
Plotting Date: 08/18/2023

INDEX OF SHEETS

- S1 General Layout with Index
- S2 Estimate With General Notes & Tables
- S3-S6 Sign Tables
- S7 Standard Plates

BEGIN NH 0014(185)229
MRM 229.13

END NH 0014(185)229
MRM 230.39



Plot Scale: 1:200

Plotted From: trp25289

File: ...Section S\0202_SignS.dgn

SECTION S ESTIMATE OF QUANTITIES

BID ITEM NUMBER	ITEM	QUANTITY	UNIT
110E5020	Salvage Traffic Sign	73	Each
110E7150	Remove Sign for Reset	36	Each
632E3500	Reset Sign	36	Each

PERMANENT SIGNING

All existing signs, posts, and hardware removed as per these plans remain the property of the State of South Dakota.

State Forces will install all signs, except STOP signs, shown in the Table of Salvage/Reset Traffic Signs.

REMOVE SIGN FOR RESET & RESET SIGN

The Contractor will remove the STOP signs and posts for reset as shown in the Table of Salvage/Reset Traffic Sign. Signs that are scheduled for reset will be dismantled and reassembled to the extent needed by the Contractor to properly reset the sign. Signs will be handled with care so that the existing signs, posts, and bases are not damaged during the relocation process. The Contractor will replace and pay for any reset signs damaged in their care. The Contractor will remove and dispose of any existing posts for all reset signs that require use of new posts as shown in the Table of Permanent Signing.

All costs for removing, dismantling, and disposing of any existing posts will be incidental to the contract unit price per each for "Remove Sign for Reset". All costs for resetting the existing signs will be incidental to the contract unit price per each for "Reset Sign". All quantities for Remove Sign for Reset and Reset Sign will be per assembly at the contract unit price per each.

SALVAGE TRAFFIC SIGN

All signs listed for salvage in the Table of Salvage/Reset Traffic Sign will have the existing posts, bases, and signs dismantled and delivered to the Pierre Maintenance Yard. The Contractor will notify the Engineer two days prior to time of delivery to the Maintenance Yard so correct placement for storage and inventory of materials can be made upon receipt. All bolts, nuts, and washers will be placed in individual 5-gallon pails. Wooden posts will be stockpiled separately from steel posts. All signs listed for salvage will be handled with care so that the signs are not damaged during removal or transport. The Contractor will replace and pay for any salvaged signs damaged in their care.

All costs for labor and equipment necessary to remove, dismantle, and deliver signs to the Pierre Maintenance Yard will be incidental to the contract unit price per each for Salvage Traffic Sign. The quantity of signs to be salvaged is shown in the Table of Salvage/Reset Traffic Sign. The plans quantity is shown as per assembly. Payment for salvaging signs will be paid per assembly at the contract unit price per each for "Salvage Traffic Sign".

Table of Salvage/Reset Traffic Signs

EXISTING MRM	SIGN								POST				DESCRIPTION	REMARKS	
	Width (in)	Height (in)	Number	Facing Traffic	New Sign	Reset or Salvage	Square Footage	Sheeting Type	New Post	Length (ft)	Size (in)	#			Shear Slip Base
229.14 + 0.025	36	36	W12-2	NORTHBOUND		S								LOW CLEARANCE W/NUMBERS	Salvage and Stockpile for Recycle
229.14 + 0.048	288	48	W12-2F	NORTHBOUND		S								OVERHEIGHT DETOUR	Salvage and Stockpile for Recycle
	36	12	OM3-L	NORTHBOUND		S								OBJECT MARKER - TYPE 3 - LEFT MOUNT	Salvage and Stockpile for Recycle
229.2 + 0.002	288	48	W12-2F	SOUTHBOUND		S								VERTICAL ARROW DOWN 11FT 3IN VERTICAL ARROW DOWN	Salvage and Stockpile for Recycle
	21	15	M2-1A	SOUTHBOUND		S								JCT S.D.	Salvage and Stockpile for Recycle
	36	12	OM3-L	SOUTHBOUND		S								OBJECT MARKER - TYPE 3 - LEFT MOUNT	Salvage and Stockpile for Recycle
	24	24	M1-5	SOUTHBOUND		S								ROUTE MARKER 34 S.D.	Salvage and Stockpile for Recycle
229.2 + 0.005	18	18	W13-1P	NORTHBOUND		S								ADVISORY SPEED PLATE - 10 M.P.H	Salvage and Stockpile for Recycle
	30	30	W1-3R	NORTHBOUND		S								RIGHT REVERSE TURN ARROW	Salvage and Stockpile for Recycle
229.2 + 0.017	36	36	W12-2	SOUTHBOUND		S								LOW CLEARANCE W/NUMBERS	Salvage and Stockpile for Recycle
229.2 + 0.034	21	15	M6-1A	WESTBOUND		S								DIR ARROW - HORIZ SINGLE HEAD -US LEFT	Salvage and Stockpile for Recycle
	21	15	M6-1A	WESTBOUND		S								DIR ARROW - HORIZ SINGLE HEAD -US LEFT	Salvage and Stockpile for Recycle
	24	24	M1-4	WESTBOUND		S								ROUTE MARKER US 14	Salvage and Stockpile for Recycle
	24	24	M1-4	WESTBOUND		S								ROUTE MARKER US 83	Salvage and Stockpile for Recycle
229.2 + 0.083	72	36	W12-2C	SOUTHBOUND		S					2.5			OVERHEIGHT DETOUR WHEN FLASHING	Salvage and Stockpile for Recycle
229.2 + 0.096	21	15	M6-1A	SOUTHBOUND		S								HORIZ SINGLE HEAD - US	Salvage and Stockpile for Recycle
	24	24	M1-4	SOUTHBOUND		S								ROUTE MARKER US 83	Salvage and Stockpile for Recycle
	24	24	M1-4	SOUTHBOUND		S								ROUTE MARKER US 14	Salvage and Stockpile for Recycle
229.2 + 0.124	18	18	W13-1P	SOUTHBOUND		S					2.0			ADVISORY SPEED PLATE - 10 M.P.H	Salvage and Stockpile for Recycle
	30	30	W1-3R	SOUTHBOUND		S								RIGHT REVERSE TURN ARROW	Salvage and Stockpile for Recycle
229.2 + 0.14	36	48	D1-3	NORTHBOUND		S								DESTINATION BOARD 3 LINES W/ARROW - STATE CAPITAL COMPLEX	Salvage and Stockpile for Recycle
			SPECIAL	NORTHBOUND		S								HISTORIC SITE ARROW RIGHT	Salvage and Stockpile for Recycle
229.2 + 0.192	36	48	D1-3	SOUTHBOUND		S								DESTINATION BOARD 3 LINES W/ARROW - STATE CAPITAL COMPLEX	Salvage and Stockpile for Recycle
			SPECIAL	SOUTHBOUND		S								HISTORIC SITE ARROW LEFT	Salvage and Stockpile for Recycle
			SPECIAL	NORTHBOUND		S								EMERGENCY SNOW ROUTE	Salvage and Stockpile for Recycle
229.2 + 0.205	24	24	M1-4	NORTHBOUND		S								ROUTE MARKER US 83	Salvage and Stockpile for Recycle
	24	12	M3-1A	NORTHBOUND		S								DIRECTIONAL MARKER NORTH US	Salvage and Stockpile for Recycle
	24	24	M1-4	NORTHBOUND		S								ROUTE MARKER US14	Salvage and Stockpile for Recycle
	24	12	M3-2A	NORTHBOUND		S								DIRECTIONAL MARKER EAST US	Salvage and Stockpile for Recycle
229.2 + 0.226	24	24	M1-4	SOUTHBOUND		S								ROUTE MARKER US 83	Salvage and Stockpile for Recycle
	24	12	M3-3A	SOUTHBOUND		S								DIRECTIONAL MARKER SOUTH US	Salvage and Stockpile for Recycle
	24	24	M1-4	SOUTHBOUND		S								ROUTE MARKER US 14	Salvage and Stockpile for Recycle
	24	12	M3-4A	SOUTHBOUND		S								DIRECTIONAL MARKER WEST US	Salvage and Stockpile for Recycle
229.2 + 0.273	24	30	R2-1X	NORTHBOUND		S								SPEED LIMIT - 30 MPH	Salvage and Stockpile for Recycle
			SPECIAL	NORTHBOUND		S								EMERGENCY SNOW ROUTE	Salvage and Stockpile for Recycle
229.2 + 0.293	18	18	W13-1P	NORTHBOUND		S								ADVISORY SPEED PLATE - 15 M.P.H (BLACK & YELLOW)	Salvage and Stockpile for Recycle
	30	30	W1-1L	NORTHBOUND		S								LEFT TURN ARROW (BLACK & YELLOW)	Salvage and Stockpile for Recycle
229.2 + 0.386	18	18	W13-1P	SOUTHBOUND		S								ADVISORY SPEED PLATE - 15 MPH	Salvage and Stockpile for Recycle
	30	30	W1-1R	SOUTHBOUND		S								RIGHT TURN ARROW	Salvage and Stockpile for Recycle
229.2 + 0.415	24	30	R2-1X	SOUTHBOUND		S								SPEED LIMIT - 30 MPH	Salvage and Stockpile for Recycle
229.2 + 0.5	24	24	M1-4	SOUTHBOUND		S								ROUTE MARKER US 83	Salvage and Stockpile for Recycle
	24	12	M3-3A	SOUTHBOUND		S								DIRECTIONAL MARKER SOUTH US	Salvage and Stockpile for Recycle
	24	24	M1-4	SOUTHBOUND		S								ROUTE MARKER US 14	Salvage and Stockpile for Recycle
	24	12	M3-4A	SOUTHBOUND		S								DIRECTIONAL MARKER WEST US	Salvage and Stockpile for Recycle

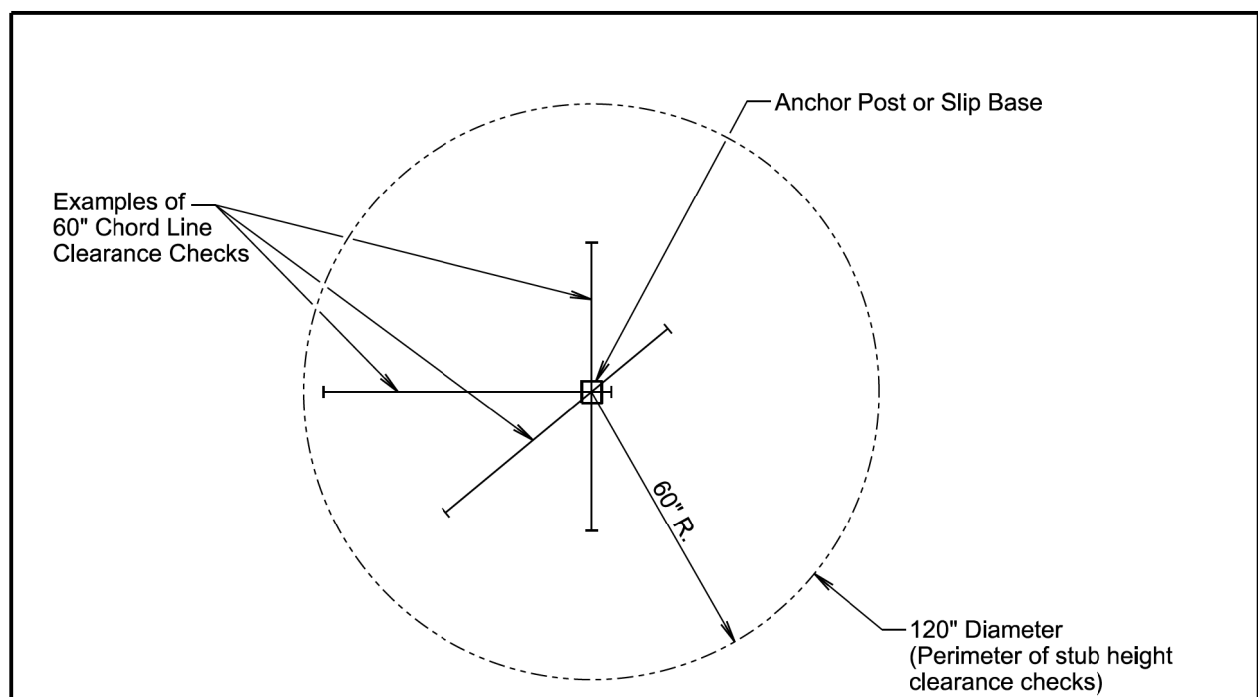
EXISTING MRM	SIGN								POST					DESCRIPTION	REMARKS
	Width (in)	Height (in)	Number	Facing Traffic	New Sign	Reset or Salvage	Square Footage	Sheeting Type	New Post	Length (ft)	Size (in)	#	Shear Slip Base		
229.2 + 0.78	24	24	M1-4	NORTHBOUND		S								ROUTE MARKER US 83	Salvage and Stockpile for Recycle
	24	12	M3-1A	NORTHBOUND		S								DIRECTIONAL MARKER NORTH US	Salvage and Stockpile for Recycle
	24	24	M1-4	NORTHBOUND		S								ROUTE MARKER US 14	Salvage and Stockpile for Recycle
	24	12	M3-2A	NORTHBOUND		S								DIRECTIONAL MARKER EAST US	Salvage and Stockpile for Recycle
229.24				ALL		R								PLEASANT & EUCLID	Place above stop sign
229.24	36	36	R1-1	EASTBOUND		R								STOP	Reset as needed to maintain crossroad traffic control
229.29				ALL		R								PLEASANT & PIERRE STREET	Place above stop sign
229.29	36	36	R1-1	WESTBOUND		R								STOP	Reset as needed to maintain crossroad traffic control
229.45				ALL		R								PROSPECT & EUCLID	Place above stop sign
229.45	36	36	R1-1	EASTBOUND		R								STOP	Reset as needed to maintain crossroad traffic control
229.45 + 0.041	24	24	M1-4	SOUTHBOUND		S								ROUTE MARKER US 83	Salvage and Stockpile for Recycle
	24	12	M3-3A	SOUTHBOUND		S								DIRECTIONAL MARKER SOUTH US	Salvage and Stockpile for Recycle
	24	12	M3-4A	SOUTHBOUND		S								DIRECTIONAL MARKER WEST US	Salvage and Stockpile for Recycle
	24	24	M1-4	SOUTHBOUND		S								ROUTE MARKER US 14	Salvage and Stockpile for Recycle
			SPECIAL	SOUTHBOUND		S								EMERGENCY SNOW ROUTE	Salvage and Stockpile for Recycle
229.55 + 0.018	24	24	M1-4	NORTHBOUND		S								ROUTE MARKER US 83	Salvage and Stockpile for Recycle
	24	12	M3-1A	NORTHBOUND		S								DIRECTIONAL MARKER NORTH US	Salvage and Stockpile for Recycle
	24	24	M1-4	NORTHBOUND		S								ROUTE MARKER US 14	Salvage and Stockpile for Recycle
	24	12	M3-2A	NORTHBOUND		S								DIRECTIONAL MARKER EAST US	Salvage and Stockpile for Recycle
229.6	36	12	R6-1	NORTHBOUND										ONE WAY	Reset as needed to maintain crossroad traffic control
			SPECIAL	NORTHBOUND										PIERRE HILL HSITORIC DISTRICT	Salvage and Stockpile for Recycle
			SPECIAL	ALL										WYNOKA & EUCLID	Place above stop sign
229.6 + 0.01	36	36	R1-1	WESTBOUND										STOP	Reset as needed to maintain crossroad traffic control
229.71	36	36	R1-1	EASTBOUND										STOP	Reset as needed to maintain crossroad traffic control
229.71			SPECIAL	ALL		R								OAK & EUCLID	Place above stop sign
			SPECIAL	ALL		S								HISTORIC DISTRIC	Salvage and Stockpile for Recycle
229.71 + 0.006	24	24	M1-4	NORTHBOUND		S								ROUTE MARKER US 83	Salvage and Stockpile for Recycle
	24	12	M3-1A	NORTHBOUND		S								DIRECTIONAL MARKER NORTH US	Salvage and Stockpile for Recycle
	24	24	M1-4	NORTHBOUND		S								ROUTE MARKER US 14	Salvage and Stockpile for Recycle
	24	12	M3-2A	NORTHBOUND		S								DIRECTIONAL MARKER EAST US	Salvage and Stockpile for Recycle
229.71 + 0.01	36	36	R1-1	WESTBOUND		R								STOP	Reset as needed to maintain crossroad traffic control
229.71 + 0.015			SPECIAL	ALL		R								OAK & EUCLID	Place above stop sign
229.78	36	36	R1-1	EASTBOUND		R								STOP	Reset as needed to maintain crossroad traffic control
229.78 + 0.01			SPECIAL	ALL		R								SENECA & EUCLID	Place above stop sign
229.78 + 0.01	36	36	R1-1	WESTBOUND		R								STOP	Reset as needed to maintain crossroad traffic control
229.78 + 0.03			SPECIAL	NORTHBOUND										SNOW ROUTE/NO PARKING WHEN DECLARED (City Owned)	Salvage and Stockpile for Recycle
229.78 + 0.04			SPECIAL	SOUTHBOUND										SNOW ROUTE/NO PARKING WHEN DECLARED (City Owned)	Salvage and Stockpile for Recycle
	24	30	R2-1X	SOUTHBOUND		S								SPEED LIMIT - 30 MPH	Salvage and Stockpile for Recycle
229.86			SPECIAL	NORTHBOUND										EUCLID & ELIZABETH	Salvage and Stockpile for Recycle
229.86 + 0.01			SPECIAL	SOUTHBOUND										SNOW ROUTE/NO PARKING WHEN DECLARED (City Owned)	Salvage and Stockpile for Recycle
			SPECIAL	SOUTHBOUND										PIERRE HILL HSITORIC DISTRICT	Salvage and Stockpile for Recycle
229.86 + 0.02	24	30	R2-1X	NORTHBOUND										SPEED LIMIT - 30 MPH	Salvage and Stockpile for Recycle
			SPECIAL	NORTHBOUND										SNOW ROUTE/NO PARKING WHEN DECLARED (City Owned)	Salvage and Stockpile for Recycle

EXISTING MRM	SIGN								POST				DESCRIPTION	REMARKS	
	Width (in)	Height (in)	Number	Facing Traffic	New Sign	Reset or Salvage	Square Footage	Sheeting Type	New Post	Length (ft)	Size (in)	#			Shear Slip Base
229.86 + 0.057	24	24	M1-4	SOUTHBOUND		S								ROUTE MARKER US 83	Salvage and Stockpile for Recycle
	24	12	M3-3A	SOUTHBOUND		S								DIRECTIONAL MARKER SOUTH US	Salvage and Stockpile for Recycle
	24	24	M1-4	SOUTHBOUND		S								ROUTE MARKER US 14	Salvage and Stockpile for Recycle
	24	12	M3-4A	SOUTHBOUND		S								DIRECTIONAL MARKER WEST US	Salvage and Stockpile for Recycle
229.91	36	36	R1-1	EASTBOUND		R								STOP	Reset as needed to maintain crossroad traffic control
			SPECIAL	ALL		R								FIRST & EUCLID	Place above stop sign
229.91 + 0.01	36	36	R1-1	WESTBOUND		R								STOP	Reset as needed to maintain crossroad traffic control
229.91 + 0.02			SPECIAL	NORTHBOUND										SNOW ROUTE/NO PARKING WHEN DECLARED (City Owned)	Salvage and Stockpile for Recycle
229.98	36	36	R1-1	WESTBOUND		R								STOP	Reset as needed to maintain crossroad traffic control
			SPECIAL	ALL		R								EUCLID & SECOND	Place above stop sign
229.98	36	36	R1-1	EASTBOUND		R								STOP	Reset as needed to maintain crossroad traffic control
229.98 + 0.005	24	24	M1-4	NORTHBOUND		S								ROUTE MARKER US 14	Salvage and Stockpile for Recycle
	24	12	M3-2A	NORTHBOUND										DIRECTIONAL MARKER EAST US	Salvage and Stockpile for Recycle
	24	24	M1-4	NORTHBOUND		S								ROUTE MARKER US 83	Salvage and Stockpile for Recycle
	24	12	M3-1A	NORTHBOUND										DIRECTIONAL MARKER NORTH US	Salvage and Stockpile for Recycle
229.98 + 0.01			SPECIAL	NORTHBOUND										SNOW ROUTE/NO PARKING WHEN DECLARED (City Owned)	Salvage and Stockpile for Recycle
229.99	24	12	R6-1	SOUTHBOUND		R								ONE WAY	Reset as needed to maintain crossroad traffic control
			SPECIAL	ALL		R								THIRD & EUCLID	Reset as needed to maintain crossroad traffic control
230 + 0.007	36	36	S1-1	NORTHBOUND		S								SCHOOL CROSSING	Salvage and Stockpile for Recycle
	24	12	W16-9P	NORTHBOUND		S								AHEAD	Salvage and Stockpile for Recycle
230 + 0.064	24	24	M1-4	SOUTHBOUND		S					2			ROUTE MARKER US 83	Salvage and Stockpile for Recycle
	24	12	M3-3A	SOUTHBOUND		S								DIRECTIONAL MARKER SOUTH US	Salvage and Stockpile for Recycle
	24	24	M1-4	SOUTHBOUND		S								ROUTE MARKER US 14	Salvage and Stockpile for Recycle
	24	12	M3-4A	SOUTHBOUND		S								DIRECTIONAL MARKER WEST US	Salvage and Stockpile for Recycle
230 + 0.066	72	36	D1-3A	NORTHBOUND		S								DESTINATION BOARD 3 LINES W/ARROW - PIERRE REGIONAL AIRPORT 3 MILES	Salvage and Stockpile for Recycle
230 + 0.186	30	30	W11-2	NORTHBOUND		S								PEDESTRIAN CROSSING	Salvage and Stockpile for Recycle
	24	12	W16-7PL	NORTHBOUND		S								PEDESTRIAN CROSSING 45 DEGREE DOWN ARROW LEFT	Salvage and Stockpile for Recycle
						S								FLASHING LED BAR	Salvage and Stockpile for Recycle
230 + 0.187	30	30	W11-2	SOUTHBOUND		S								PEDESTRIAN CROSSING	Salvage and Stockpile for Recycle
	24	12	W16-7PL	SOUTHBOUND		S								PEDESTRIAN CROSSING 45 DEGREE DOWN ARROW LEFT	Salvage and Stockpile for Recycle
230 + 0.208	24	12	W16-9P	SOUTHBOUND		S					2			AHEAD - WORDS	Salvage and Stockpile for Recycle
	36	36	W11-2	SOUTHBOUND		S								PEDESTRIAN CROSSING, ADVANCE SYMBOL	Salvage and Stockpile for Recycle
230 + 0.369	36	36	W6-1	NORTHBOUND		S								DIVIDED HIGHWAY BEGIN	Salvage and Stockpile for Recycle
230 + 0.372	24	30	R2-1X	SOUTHBOUND		S								SPEED LIMIT - 35 MPH	Salvage and Stockpile for Recycle
230.1	36	36	R1-1	EASTBOUND		R								STOP	Reset as needed to maintain crossroad traffic control
			SPECIAL	ALL		R								FOURTH & EUCLID	Place above stop sign
230.1 + 0.001	36	36	R1-1	WESTBOUND		R								STOP	Reset as needed to maintain crossroad traffic control
			SPECIAL	ALL		R								FOURTH & EUCLID	Place above stop sign
230.1 + 0.007	30	18	W16-7PL	SOUTHBOUND		S					2.0			PEDESTRIAN CROSSING 45 DEGREE DOWN ARROW LEFT	Salvage and Stockpile for Recycle
	36	36	S1-1	SOUTHBOUND		S								SCHOOL CROSSING	Salvage and Stockpile for Recycle
230.1 + 0.01	42	54	W16-7PL	NORTHBOUND		S								PEDESTRIAN CROSSING 45 DEGREE DOWN ARROW LEFT	Salvage and Stockpile for Recycle
230.1 + 0.02	48	72	S1-2	SOUTHBOUND		S								SCHOOL CROSSING	Salvage and Stockpile for Recycle
	24	12	W16-9P	SOUTHBOUND										AHEAD - WORDS	Salvage and Stockpile for Recycle

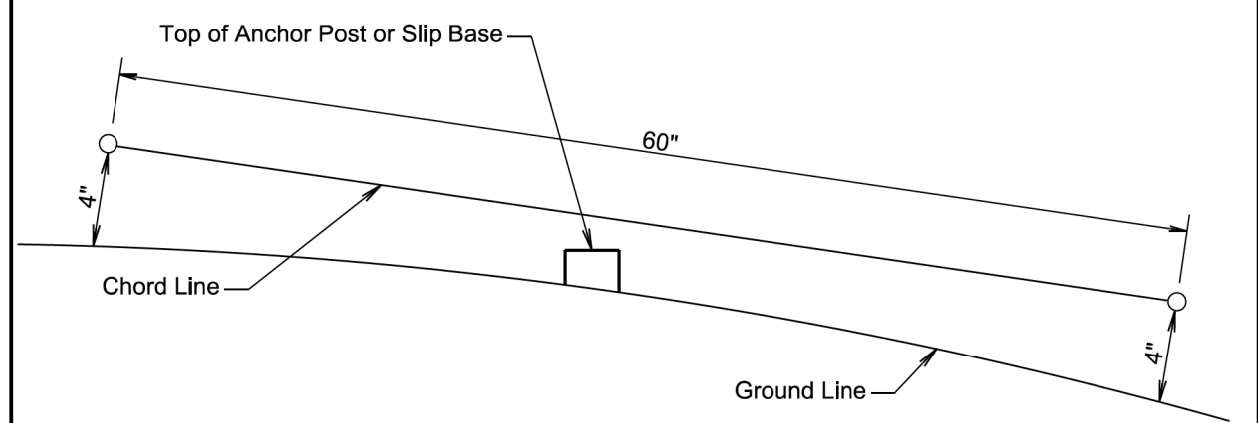
EXISTING MRM	SIGN								POST					DESCRIPTION	REMARKS
	Width (in)	Height (in)	Number	Facing Traffic	New Sign	Reset or Salvage	Square Footage	Sheeting Type	New Post	Length (ft)	Size (in)	#	Shear Slip Base		
230.1 + 0.045	36	36	W11-2	NORTHBOUND		S					2			PEDESTRIAN CROSSING	Salvage and Stockpile for Recycle
	24	12	W16-9P	NORTHBOUND		S								AHEAD - WORDS	Salvage and Stockpile for Recycle
230.16	36	36	R1-1	EASTBOUND		R								STOP	Reset as needed to maintain crossroad traffic control
			SPECIAL	ALL		R								FIFTH & EUCLID	Reset as needed to maintain crossroad traffic control
230.16 + 0.001	36	36	R1-1	WESTBOUND		R								STOP	Reset as needed to maintain crossroad traffic control
230.16 + 0.005	36	36	S1-1	SOUTHBOUND		S					2			PEDESTRIAN CROSSING	Salvage and Stockpile for Recycle
	30	18	W16-9P	SOUTHBOUND		S								AHEAD - WORDS	Salvage and Stockpile for Recycle
230.22	36	36	R1-1	EASTBOUND										STOP	Reset as needed to maintain crossroad traffic control
230.22 + 0.01			SPECIAL	WESTBOUND										EUCLID & US 14-83	Reset as needed to maintain crossroad traffic control
230.22 + 0.02	36	36	R1-1	WESTBOUND										STOP	Reset as needed to maintain crossroad traffic control
230.22 + 0.03			SPECIAL	EASTBOUND										SIXTH ST	Reset as needed to maintain crossroad traffic control
230.29 - 0.007	24	24	M1-4	NORTHBOUND		S								ROUTE MARKER US 14	Salvage and Stockpile for Recycle
	24	12	M3-2A	NORTHBOUND		S								DIRECTIONAL MARKER EAST US	Salvage and Stockpile for Recycle
	24	24	M1-4	NORTHBOUND		S								ROUTE MARKER US 83	Salvage and Stockpile for Recycle
	24	12	M3-1A	NORTHBOUND		S								DIRECTIONAL MARKER NORTH US	Salvage and Stockpile for Recycle
	24	30	SPECIAL	NORTHBOUND										NO U TURN	Salvage and Stockpile for Recycle

PLOT SCALE - 1:200

PLOT NAME - 1
FILE - ... \SECTION STANDARD PLATES.DGN



PLAN VIEW
(Examples of stub height clearance checks)



ELEVATION VIEW

GENERAL NOTES:

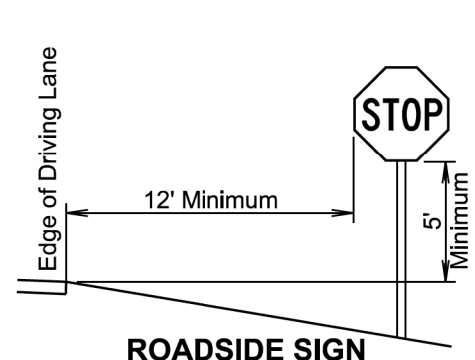
The top of anchor posts and slip bases WILL NOT extend above a 60" chord line within a 120" diameter circle around the post with ends 4" above the ground.

At locations where there is curb and gutter adjacent to the breakaway sign support, the stub height will be a maximum of 4" above the ground line at the localized area adjacent to the breakaway support stub.

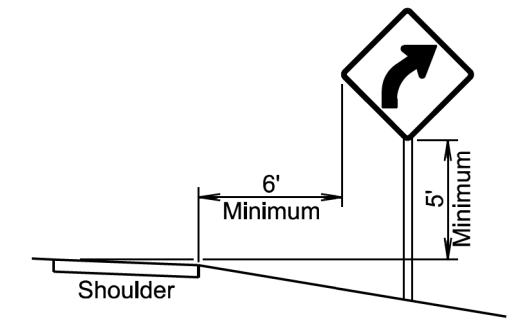
January 22, 2021

S D D O T	BREAKAWAY SUPPORT STUB CLEARANCE	PLATE NUMBER 632.18
		Sheet 1 of 1

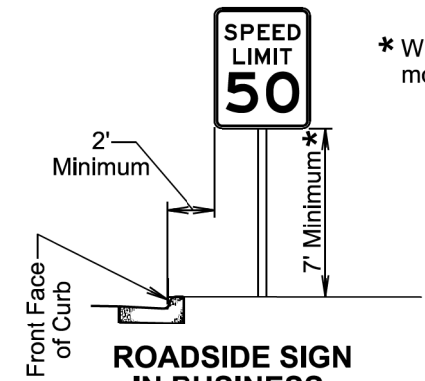
Published Date: 2024



ROADSIDE SIGN IN RURAL AREA

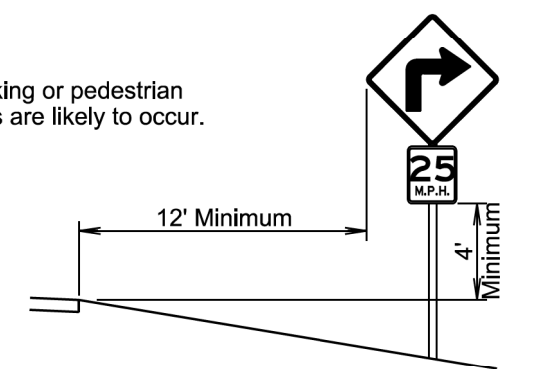


ROADSIDE SIGN IN RURAL AREA
(If shoulder width is greater than 6 foot)

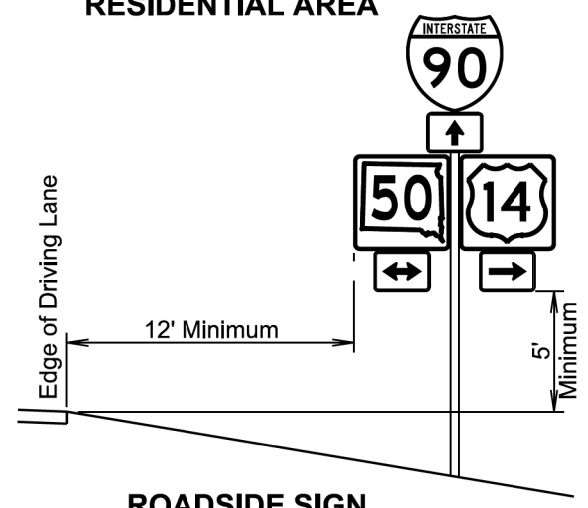


ROADSIDE SIGN IN BUSINESS, COMMERCIAL, OR RESIDENTIAL AREA

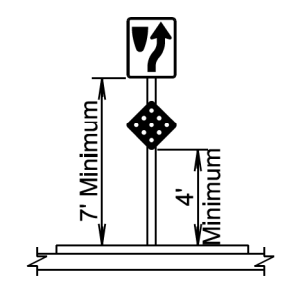
* Where parking or pedestrian movements are likely to occur.



WARNING SIGN ADVISORY SPEED PLAQUE IN RURAL AREA



ROADSIDE SIGN IN RURAL AREA



SIGN ON NOSE OF MEDIAN

November 19, 2020

S D D O T	OFFSETS FOR SIGN INSTALLATION	PLATE NUMBER 632.90
		Sheet 1 of 1

Published Date: 2024