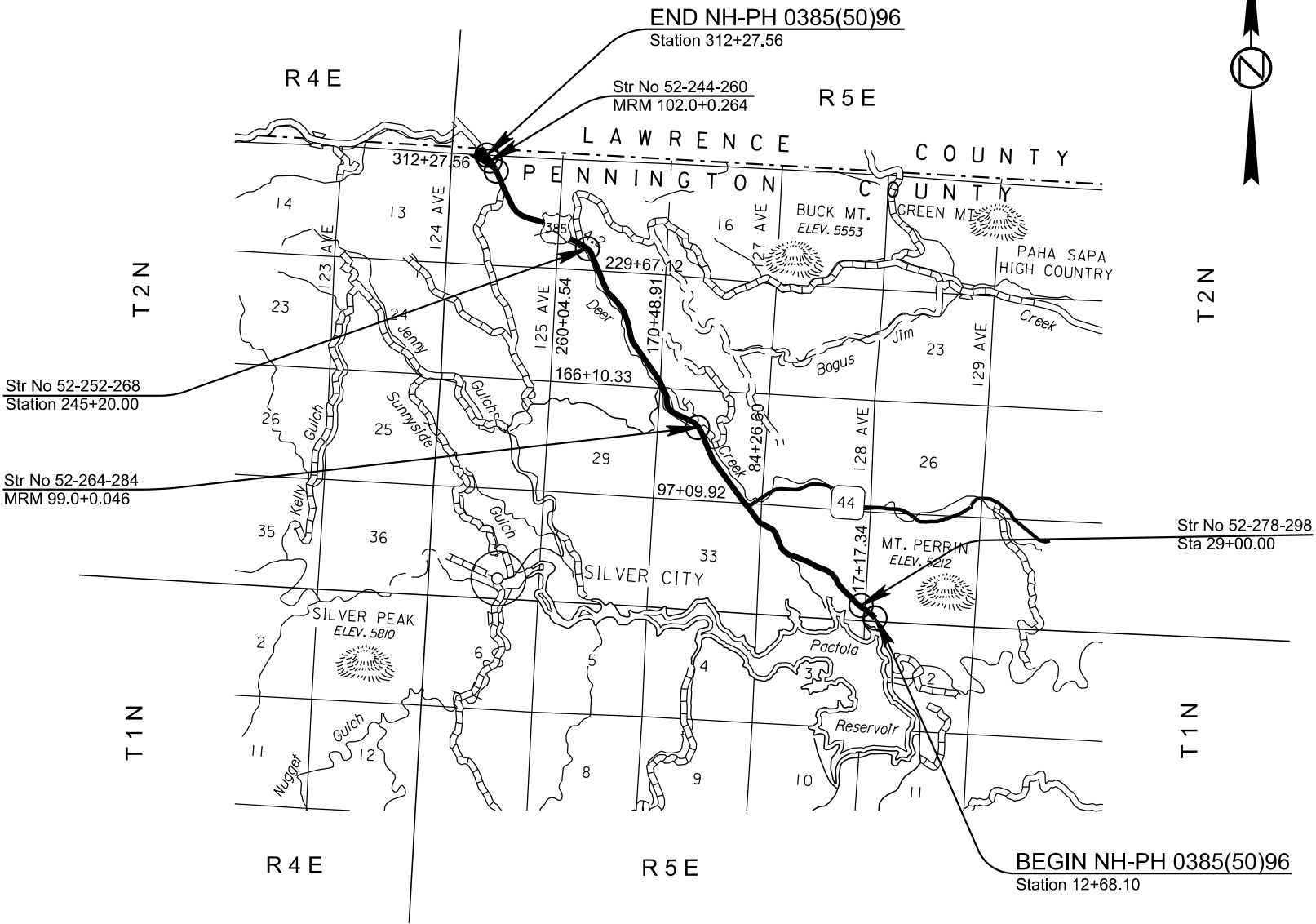


SECTION S: SIGNING PLANS

STATE OF SOUTH DAKOTA	PROJECT	SHEET	TOTAL SHEETS
	PH 0385(50)96	S1	S16
Plotting Date: 08/24/2023		Revised 8-24-23 NW	

INDEX OF SHEETS

S1	Title Page
S2-S3	Notes
S4	Delineator Table
S5-S8	Sign Tables
S9-S12	Sign Designs
S13-S16	Standard Plates



Plot Scale - 1:200

Plotted From - TRRC12221

Plotted From -

SECTION S – ESTIMATE OF QUANTITIES

BID ITEM NUMBER	ITEM	QUANTITY	UNIT
110E0130	Remove Traffic Sign	23	Each
110E0135	Remove Delineator	169	Each
110E7150	Remove Sign for Reset	59	Each
632E1320	2.0"x2.0" Perforated Tube Post	133.0	Ft
632E1340	2.5"x2.5" Perforated Tube Post	44.0	Ft
632E2022	4"x4" White Delineator Back to Back with 1.12 Lb/Ft Post	159	Each
632E2207	4" Tubular White Delineator Reflector	10	Each
632E3203	Flat Aluminum Sign, Nonremovable Copy High Intensity	40.4	SqFt
632E3205	Flat Aluminum Sign, Nonremovable Copy Super/Very High Intensity	296.7	SqFt
632E3500	Reset Sign	59	Each

GENERAL PERMANENT SIGNING

New sign installations will be staked in the field by the Contractor and checked by the Engineer. The Contractor will give the Engineer a minimum of one week to check staked locations prior to signpost installation. Lateral offset of signs will be as shown in the plans or as directed by the Engineer.

The Contractor will be responsible for contacting South Dakota One Call to locate the utilities at the staked sign installation locations.

When signs are mounted in an assembly, they will be 1-2 inches apart vertically and horizontally.

The height of the post must not exceed the minimum height needed by more than 0.5 feet. Any portion that extends above the sign will be cut off. No separate payment will be made for cutting the post or for that length cut off.

Aluminum U-Channel stiffeners will be used on all signs 36 inches or greater in width and will conform to ASTM B221 Alloy 6063-T6 or 6061-T6. The U-Channel will be 2 inches in width and free of holes. The U-Channel stiffeners will also be used to connect various signs together so that an entire sign assembly can be erected on a single installation. Stiffeners may be fastened to signs by use of 1/4-inch diameter drive rivets.

The Contractor will use 3/8-inch diameter rust proof machine sign bolts, flat metal washers, neoprene washers (against the sign sheeting), lock washers, and nuts to fasten the sign to the channel aluminum and posts. A minimum of two bolts will extend through each post.

Prior to ordering signs, the Contractor will verify dimensions, background, border, and legend of the signs.

Prior to use, the Contractor will provide documentation for the sign support devices showing they meet the applicable NCHRP 350 or MASH requirements.

REMOVE TRAFFIC SIGN

Existing signs that are shown as being removed in the Permanent Signing Table will become the property of the Contractor. Existing signposts and bases will be removed in their entirety. All existing signs, posts, and/or hardware removed will not be reused. Holes remaining from the removal of wood posts will be backfilled and compacted with material placed in layers not to exceed 6 inches in depth.

All costs associated with the removal of existing signs, posts, hardware, and backfilled holes will be incidental to the contract unit price per each for “Remove Traffic Sign”. Quantities will be per assembly at the contract unit price per each.

REMOVE SIGN FOR RESET AND RESET SIGN

Signs that are scheduled for reset will be dismantled and reassembled to the extent needed by the Contractor to properly reset the sign. Signs will be handled with care so that the existing signs, posts, and bases are not damaged during the relocation process. The Contractor will replace and pay for any reset signs damaged in their care. The Contractor will remove and dispose of any existing posts for all reset signs that require use of new posts as shown in the Table of Permanent Signing.

All costs for removing, dismantling, and disposing of any existing posts will be incidental to the contract unit price per each for “Remove Sign for Reset”. All costs for resetting the existing signs will be incidental to the contract unit price per each for “Reset Sign”. All quantities for Remove Sign for Reset and Reset Sign will be per assembly at the contract unit price per each.

NEW PERMANENT SIGNING

All signs will be manufactured in accordance with the sheeting manufacturer’s recommendations utilizing a matched component system, including inks, electronic cuttable films, and protective overlay films.

All Flat Aluminum Signs, Nonremovable Copy High Intensity will have sheeting in conformance with the requirements of ASTM D4956 Type IV. All Flat Aluminum Signs, Nonremovable Copy Super/Very High Intensity will have sheeting in conformance with the requirements of ASTM D4956 Type XI.

All costs associated with furnishing and installing the new permanent signs, and with furnishing and installing stiffeners and hardware will be incidental to the contract unit price per square foot for “Flat Aluminum Sign, Nonremovable Copy High Intensity” or “Flat Aluminum Sign, Nonremovable Copy Super/Very High Intensity”.

SQUARE TUBE ANCHOR SLEEVE

The Contractor will furnish and install new 2.5” x 2.5” x 18”, 12 Gauge square tube anchor sleeve or equivalent components as approved by the Engineer for 2.0” x 2.0” perforated tube posts. A 2.25” x 2.25” x 4’, 12 Gauge perforated tube post will be used as the anchor post for installation with the square tube anchor sleeve.

SQUARE TUBE POST SLEEVE

All 2.5” x 2.5”, 10 Gauge perforated tube post will be sleeved with a 2-3/16” x 2-3/16” x 4’, 10 Gauge perforated tube post.

WINGED SLIP BASE ANCHOR

The Contractor will furnish and install new winged slip base anchors for 2.5” x 2.5” perforated tube posts as required in the Permanent Signing Table. Winged slip base anchors will be installed using the direct drive method. Winged slip base anchors will consist of a slip base (upper), a 48-inch-long winged anchor (lower), and a hardware kit.

DELINEATORS – HWY 385

After construction is complete, delineators will be placed on both sides of the roadway. The delineators will match the color of the closest edgeline and will be spaced at intervals indicated on standard plate 632.46. (See- Estimate of Delineators table in these plans). Object markers are to be replaced within section B of these plans. Guardrail delineation markers will be replaced within section B of these plans.

DIGITALLY PRINTED SIGNS

Digitally printed signs will be allowed on this project. If the Contractor elects to provide digitally printed signs, such signs will adhere to the following specifications.

PROTECTIVE OVERLAY FILM

Permanent traffic signs printed with digital ink systems will be fabricated with a full sign protective overlay film designed to provide a smooth surface needed for retroreflectivity, and to protect the sign from fading and UV degradation. The overlamine will comply with the retroreflective sheeting manufacturer’s recommendations to ensure proper adhesion and transparency and will also meet the reflective film durability as identified in Table 1.

Table 1: Retroreflective Film Minimum Durability Requirements

ASTM D4956 Type	Full Sign Replacement Term (years)	Sheeting Replacement Term (years)
I	0	7
III	7	10
IV	7	10
VIII	7	10
IX	7	12
XI	7	12

FABRICATION

Retroreflective sheeting will be applied to a properly cleaned and prepared aluminum sign blank in accordance with the retroreflective sheeting manufacturer’s recommendations. Sign legend will be applied using digital print technologies and systems in accordance with the retroreflective sheeting manufacturer’s recommendations and the requirements of these plans.

Finished signs will be free of ragged edges and must be supplied clean and free of scratches, grease, oil, lubricants, or other contaminants. Minor blemishes (dirt speck, dust, etc.) may settle on the fresh ink surface or become entrapped between the sheeting surface and transparent overlay film due to static charge within the sign shop environment. Any blemish must be minor and not interfere with the communication of the sign message to the motorist. The blemish must not be visible to the naked eye when viewed from 30 feet or greater.

After application of the retroreflective sheeting, sign blanks will be stacked and packaged face to face, back-to-back, and protected in accordance with the sheeting manufacturer’s recommendations. Finished signs will be securely packaged to prevent damage during transit or storage according to the sheeting manufacturer’s recommendations.

TRAFFIC SIGN PERFORMANCE WARRANTY PROVISIONS

Based on the ASTM Type of sheeting specified, traffic control signs will be warranted for the duration shown in Table 1. Full product terms and conditions are as established by each sheeting manufacturer and may contain certain limitations based on sheeting and ink colors, and geographic exposure of the sign. A copy of the warranty document with complete details of terms and conditions will be supplied if requested by the Engineer.

CERTIFIED DIGITAL SIGN FABRICATOR

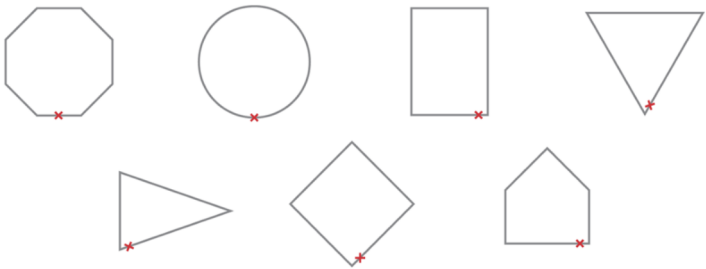
Sign fabricators using digital imaging methods to produce regulated traffic signs must be certified by the reflective sheeting manufacturer whose materials are used to produce the delivered signs.

DATE TAGGING SIGNS WITH PERTINENT INFORMATION

All digitally printed signs are required to be date-tagged with the following 2 components:

1. Date tags on the back of signs
Tags will have the following information and be fabricated with material and printing system that are as durable as the warranted sign.
 - Name of Sign Fabricator
 - Date the sign was fabricated (month and year)
 - Process that was used for sign fabrication (digitally printed)
 - Supplier of sheeting that was used for fabricating the sign.

2. Border date
The month and year (mm/yyyy) of sign fabrication will be printed in the border of the sign in 3/8” sans serif font. Border date will be printed with the same warranted printed system as the sign face. The date should be printed in the locations indicated below.



ESTIMATE OF DELINEATORS

Estimate of Delineators							
				Location			TOTALS
				US 385 SB - Mainline	US 385 NB - Mainline	US 385 & SD 44 Intersection	
4" x 4" White Delineator				77	82	-	159
4" x 4" Amber Delineator				-	-	-	0
4" x 8" White Delineator				-	-	-	0
4" x 8" Amber Delineator				-	-	-	0
4" Dia. x 6" White Tubular Delineator				-	-	10	10
4" Dia. x 6" Amber Tubular Delineator				-	-	-	0
8" x 24" Type 2 Yellow Object Marker				-	-	-	0
Remove Delineators				77	82	10	169

SIGN TABLE

PCN 03BD - US HWY 385 PERMANENT SIGNING																						FLAT ALUMINUM		REMOVE SIGN	REMOVE SIGN FOR RESET & RESET SIGNS	NEW DESIGN
HWY	Sta.	SIGN										POST					SIGN DESCRIPTION	WORK TO BE DONE	LF of 2"	LF of 2 1/2"	SQFT IV	SQFT XI				
		Side of Road	Width (in)	Height (in)	Direction Facing	Location	New Sign	Sign Type	Remove Existing	Square Footage	Sheeting Type	New Post	Length (ft)	Size (in)	# of Posts	Shear Slip Base										
US 385	12+69	Right	30	30	South	ROW	YES	FLAT ALUM	YES	6.25	XI	NO					W11-2: PEDESTRIAN CROSSING, ADVANCE (SYM) pedestrian crossing	REMOVE SIGN, INSTALL NEW FLAT ALUMINUM SIGN ON EXISTING POSTS				6.3	1			
US 385	12+69	Right	24	18	South	ROW	YES	FLAT ALUM	YES	3	XI	NO					W16-9P: AHEAD - WORDS ahead					3.0				
US 385	13+60	Left	36	30	North	ROW	NO	FLAT ALUM	YES	7.5	I	NO					ADO-2: ADOPT-A-HIGHWAY LITTER CONTROL COURTESY OF ADOPT-A-HIGHWAY COURTESY OF	REMOVE SIGN FOR RESET & RESET SIGNS					1			
US 385	13+60	Left	36	12	North	ROW	NO	FLAT ALUM	YES	3	I	NO					ADO-1: ADOPT-A-HIGHWAY CLUB SIGN in memory of jim montgomery									
US 385	13+60	Left	60	24	North	ROW	NO	FLAT ALUM	YES	10	I	NO					ADO-1: ADOPT-A-HIGHWAY CLUB SIGN in memory of blaine m disanto									
US 385	16+20	Right	24	24	South	ROW	NO	FLAT ALUM	YES	4	XI	NO					I10-3: FATALITY MARKER/ THINK / WHY DIE Why die	REMOVE SIGN					1			
US 385	17+30	Right	30	30	South	ROW	NO	FLAT ALUM	YES	6.25	XI	YES	10	2.00	1.00	NO	W1-5R: RIGHT WINDING ROAD ARROW Winding Road Right	REMOVE SIGN FOR RESET & RESET SIGN ON NEW POST	10.0					1		
US 385	30+00	Right	30	30	South	ROW	NO	FLAT ALUM	YES	6.25	IV	NO					W11-2: PEDESTRIAN CROSSING, ADVANCE (SYM) PEDESTRIAN SYMBOL	REMOVE SIGN FOR RESET & RESET SIGN					1			
US 385	30+00	Right	30	18	South	ROW	NO	FLAT ALUM	YES	3.75	IV	NO					W16-7PL: PEDESTRIAN CROSSING 45 DEGREE DOWN ARROW - LEFT 45 degree arrow left									
US 385	30+00	Left	30	30	North	ROW	NO	FLAT ALUM	YES	6.25	XI	NO					W11-2: PEDESTRIAN CROSSING, ADVANCE (SYM) PEDESTRIAN SYMBOL	REMOVE SIGN FOR RESET & RESET SIGN					1			
US 385	30+00	Left	30	18	North	ROW	NO	FLAT ALUM	YES	3.75	XI	NO					W16-7PL: PEDESTRIAN CROSSING 45 DEGREE DOWN ARROW - LEFT Left 45 degree arrow									
US 385	45+70	Left	30	30	North	ROW	NO	FLAT ALUM	YES	6.25	IV	NO					W11-2: PEDESTRIAN CROSSING, ADVANCE (SYM) trail crossing - SYMB OL	REMOVE SIGN FOR RESET & RESET SIGN					1			
US 385	45+70	Left	24	18	North	ROW	NO	FLAT ALUM	YES	3	IV	NO					W16-9P: AHEAD - WORDS trail crossing ahead									
US 385	55+10	Right	30	30	South	ROW	NO	FLAT ALUM	YES	6.25	XI	YES	8	2.00	1.00	NO	W2-2: SIDE ROAD 90 DEGREE (SYM) Side Road (perpendicular)	REMOVE SIGN FOR RESET & RESET SIGN ON NEW POST	8.0					1		
US 385	60+90	Right	84	48	South	ROW	NO	FLAT ALUM	YES	28	XI	YES	10	2.50	2.00	YES	RS-NS1A: RECREATION DESTINATION WORDS W/ ARROW Pactola reservoir	REMOVE SIGN FOR RESET & RESET SIGN ON NEW POST		20.0				1		
US 385	63+30	Left	30	30	West	ROW	NO	FLAT ALUM	YES	5.2	XI	NO					R1-1: STOP Stop	REMOVE SIGN FOR RESET & RESET SIGN						1		
US 385	63+50	Left	84	48	North	ROW	NO	FLAT ALUM	YES	28	XI	NO					RS-NS1A: RECREATION DESTINATION WORDS W/ ARROW PACTOLA LAKE RECREATION AREA BOAT LAUNCH	REMOVE SIGN FOR RESET & RESET SIGN						1		
US 385	63+50	Right	48	84	West	ROW	NO	FLAT ALUM	YES	28	XI	NO					D1-2: DESTINATION BOARD - 2 LINES W/ ARROW Pactola reservoir north ramp	REMOVE SIGN FOR RESET & RESET SIGN						1		
US 385	64+00	Left	48	24	South	ROW	NO	FLAT ALUM	YES	8	XI	NO					W1-6: ARROW - LARGE HORIZ SINGLE HEAD Large Arrow (1-direction)	REMOVE SIGN FOR RESET & RESET SIGN						1		
US 385	64+20	Left	30	30	North	ROW	NO	FLAT ALUM	YES	6.25	XI	YES	10	2.00	1.00	NO	W1-5L: LEFT WINDING ROAD ARROW LEFT WINDING ROAD	REMOVE SIGN FOR RESET & RESET SIGN ON NEW POST	10.0					1		
US 385	69+00	Left	30	30	North	ROW	NO	FLAT ALUM	YES	6.25	XI	YES	10	2.00	1.00	NO	W2-2: SIDE ROAD 90 DEGREE (SYM) Side Road (perpendicular)	REMOVE SIGN FOR RESET & RESET SIGN ON NEW POST	10.0					1		
US 385	75+00	Right	36	36	South	ROW	NO	FLAT ALUM	YES	9	XI	NO					W3-3: SIGNAL AHEAD (SYM) SIGNAL AHEAD SYMBOL	REMOVE SIGN FOR RESET & RESET SIGN						1		
US 385	86+20	Right	21	15	South	ROW	NO	FLAT ALUM	YES	2.1875	XI	NO					M2-1A: JUNCTION MARKER - US JCT - SD	REMOVE SIGN FOR RESET & RESET SIGN					1			
US 385	86+20	Right	24	30	South	ROW	NO	FLAT ALUM	YES	5	XI	NO					M1-5: ROUTE MARKER (STATE/COUNTY ROADS) SD-44									
US 385	87+50	Left	30	36	North	ROW	NO	FLAT ALUM	YES	7.5	XI	NO					R2-1X: SPEED LIMIT - [SPECIFY SPEED] SPEED LIMIT 55	REMOVE SIGN FOR RESET & RESET SIGN						1		
US 385	89+50	Left	48	48	North	ROW	YES	FLAT ALUM	YES	16	IV	NO					D1-2: DESTINATION BOARD - 2 LINES W/ ARROW MT. RUSHMORE with arrow	REMOVE SIGN, INSTALL NEW SIGN ON EXISTING POSTS				16.0	1			
US 385	89+50	Left	84	36	North	ROW	YES	FLAT ALUM	YES	21	XI	NO					D2-3: DISTANCE BOARD - 3 LINES JCT (16) 13 Hill City 14 Custer 31					24.5			xx	

SIGN TABLE

PCN 03BD - US HWY 385 PERMANENT SIGNING																										
HWY	Sta.	SIGN										POST					SIGN DESCRIPTION	WORK TO BE DONE	LF of 2"	LF of 2 1/2"	FLAT ALUMINUM		REMOVE SIGN	REMOVE SIGN FOR RESET & RESET SIGNS	NEW DESIGN	
		Side of Road	Width (in)	Height (in)	Direction Facing	Location	New Sign	Sign Type	Remove Existing	Square Footage	Sheeting Type	New Post	Length (ft)	Size (in)	# of Posts	Shear Slip Base					SQFT IV	SQFT XI				
US 385	89+70	Right	108	42	South	ROW	NO	FLAT ALUM	YES	31.5	XI	NO					D1-3: DESTINATION BOARD - 3 LINES W/ ARROW DEADWOOD- LEAD,JOHNSON SIDING , RAPID CITY W/ARROWS	REMOVE SIGN FOR RESET & RESET SIGN							1	
US 385	89+90	Left	30	30	North	ROW	NO	FLAT ALUM	YES	6.25	XI	NO					W1-5L: LEFT WINDING ROAD ARROW WINDING ROAD SYMBOL	REMOVE SIGN FOR RESET & RESET SIGN							1	
US 385	90+10	Right	30	24	South	ROW	NO	FLAT ALUM	YES	5	XI	NO					M1-4: ROUTE MARKER (US HIGHWAYS) US-385	REMOVE SIGN FOR RESET & RESET SIGN						1		
US 385	90+10	Right	21	15	South	ROW	NO	FLAT ALUM	YES	2.1875	XI	NO					M6-1A: DIR ARROW - HORIZ SINGLE HEAD - US Horizontal Arrow SD									
US 385	90+10	Right	21	15	South	ROW	NO	FLAT ALUM	YES	2.1875	XI	NO					M6-3A: DIR ARROW - VERT SINGLE HEAD - US US VERTICAL ARROW									
US 385	90+10	Right	24	12	South	ROW	NO	FLAT ALUM	YES	2	XI	NO					M1-5: ROUTE MARKER (STATE/COUNTY ROADS) SD-44									
US 385	91+00	Right	84	30	South	ROW	YES	FLAT ALUM	YES	17.5	XI	NO					D1-2: DESTINATION BOARD - 2 LINES W/ ARROW RIM ROCK SCENIC HIGHWAY	REMOVE SIGN, INSTALL NEW SIGN ON EXISTING POSTS				16.0	1		X	
US 385	91+10	Left	36	36	North	ROW	NO	FLAT ALUM	YES	9	I	NO					ADO-2: ADOPT-A-HIGHWAY LITTER CONTROL COURTESY OF ADOPT A HIGHWAY LITTER CONTROL COURTESY OF	REMOVE SIGN FOR RESET & RESET SIGN						1		
US 385	91+10	Left	36	12	North	ROW	NO	FLAT ALUM	YES	3	I	NO					ADO-1: ADOPT-A-HIGHWAY CLUB SIGN BLACK HILLS 4 - WHEELERS									
US 385	92+40	Left	24	12	North	ROW	NO	FLAT ALUM	YES	2	XI	NO					M3-3A: DIRECTIONAL MARKER - SOUTH - US SOUTH CARDINAL	REMOVE SIGN FOR RESET & RESET SIGN						1		
US 385	92+40	Left	36	24	North	ROW	NO	FLAT ALUM	YES	6	XI	NO					M1-4: ROUTE MARKER (US HIGHWAYS) ROUTE MARKER US 385									
US 385	92+60	Right	96	48	South	ROW	YES	FLAT ALUM	YES	32	IV	NO					D2-2: DISTANCE BOARD - 2 LINES Deadwood 25 Lead 25	REMOVE SIGN, INSTALL NEW SIGN ON EXISTING POSTS			18.8		1		X	
US 385	93+90	Right	48	48	East	ROW	NO	FLAT ALUM	YES	7.2	XI	NO					R1-1: STOP STOP	REMOVE SIGN FOR RESET & RESET SIGN						1		
US 385	93+90	Left	24	12	East	ROW	YES	FLAT ALUM	YES	2	XI	NO					M3-1A: DIRECTION MARKER - NORTH - US NORTH CARDINAL	REMOVE SIGN FOR RESET AND RESET SIGN				2.0		1		
US 385	93+90	Left	30	30	East	ROW	YES	FLAT ALUM	YES	6.25	IV	NO					M1-4: ROUTE MARKER (US HIGHWAYS) ROUTE MARKER US 385					6.3				
US 385	93+90	Left	24	12	East	ROW	YES	FLAT ALUM	YES	2	XI	NO					M6-1A: DIR ARROW - HORIZ SINGLE HEAD - US LEFT DIRECTIONAL ARROW					2.0				
US 385	93+90	Left	24	18	East	ROW	YES	FLAT ALUM	YES	3	IV	NO					M6-1A: DIR ARROW - HORIZ SINGLE HEAD - US RIGHT DIRECTIONAL ARROW					3.0				
US 385	93+90	Left	60	30	East	ROW	YES	FLAT ALUM	YES	12.5	XI	NO					W1-7: ARROW - LARGE HORIZ DOUBLE HEAD DIRECTIONAL ARROW					12.5				
US 385	93+90	Left	24	12	East	ROW	YES	FLAT ALUM	YES	2	XI	NO					M3-3A: DIRECTIONAL MARKER - SOUTH - US SOUTH CARDINAL					2.0				
US 385	94+10	Left	24	12	North	ROW	YES	FLAT ALUM	YES	2	XI	NO					M3-2A: DIRECTIONAL MARKER - EAST - US EAST CARDINAL	REMOVE SIGN FOR RESET AND RESET SIGN				2.0		1		
US 385	94+10	Left	24	24	North	ROW	NO	FLAT ALUM	YES	4	XI	NO					M1-5: ROUTE MARKER (STATE/COUNTY ROADS) ROUTE MARKER SD 44									
US 385	94+10	Left	24	24	North	ROW	YES	FLAT ALUM	YES	4	XI	NO					M1-5: ROUTE MARKER (STATE/COUNTY ROADS) ROUTE MARKER 385					4.0				
US 385	94+10	Left	21	15	North	ROW	YES	FLAT ALUM	YES	2.1875	XI	NO					M6-1A: DIR ARROW - HORIZ SINGLE HEAD - US Horizontal Arrow SD					2.2				
US 385	94+10	Left	21	15	North	ROW	YES	FLAT ALUM	YES	2.1875	XI	NO					M6-3A: DIR ARROW - VERT SINGLE HEAD - US Vertical Arrow US					2.2				
US 385	94+10	Left	24	12	North	ROW	YES	FLAT ALUM	YES	2	XI	NO					M3-3A: DIRECTIONAL MARKER - SOUTH - US Direction Marker US					2.0				
US 385	94+20	Right	30	24	South	ROW	YES	FLAT ALUM	YES	5	XI	NO					M1-4: ROUTE MARKER (US HIGHWAYS) ROUTE MARKER US 385	REMOVE SIGN FOR RESET AND RESET SIGN				5.0		1		
US 385	94+20	Right	24	12	South	ROW	YES	FLAT ALUM	YES	2	XI	NO					M3-1A: DIRECTION MARKER - NORTH - US NORTH CARDINAL					2.0				
US 385	94+30	Left	96	24	North	ROW	YES	FLAT ALUM	YES	16	XI	NO					D1-1: DESTINATION BOARD - 1 LINE W/ARROW (6" UC ; 4.5" LC) RIM ROCK SCENIC HIGHWAY	REMOVE SIGN, INSTALL NEW SIGN ON EXISTING POSTS				16.0	1		X	
US 385	95+70	Right	30	36	South	ROW	NO	FLAT ALUM	YES	7.5	XI	NO					R2-1X: SPEED LIMIT - [SPECIFY SPEED] SPEED LIMIT 55	REMOVE SIGN FOR RESET & RESET SIGN						1		
US 385	95+90	Left	84	42	North	ROW	NO	FLAT ALUM	YES	24.5	XI	NO					D1-2: DESTINATION BOARD - 2 LINES W/ ARROW Hill City ^ Rapid City < Johnson Siding <	REMOVE SIGN FOR RESET & RESET SIGN						1		
US 385	96+20	Left	21	15	North	ROW	YES	FLAT ALUM	YES	2.1875	XI	NO					M2-1A: JUNCTION MARKER - US JCT	REMOVE SIGN FOR RESET AND RESET SIGN				2.2		1		
US 385	96+20	Left	24	30	North	ROW	YES	FLAT ALUM	YES	5	XI	NO					M1-5: ROUTE MARKER (STATE/COUNTY ROADS) SD-44					5.0				
US 385	98+50	Right	36	36	North	ROW	NO	FLAT ALUM	YES	9	XI	NO					W3-3: SIGNAL AHEAD (SYM) SIGNAL AHEAD SYMBOL	REMOVE SIGN FOR RESET & RESET SIGN						1		
US 385	99+60	Left	48	36	South	ROW	YES	FLAT ALUM	YES	12	XI	NO					W14-3: NO PASSING ZONE NO PASSING ZONE	REMOVE SIGN FOR RESET & RESET SIGN				12.0		1		
US 385	99+70	Right	48	36	North	ROW	YES	FLAT ALUM	YES	12	XI	NO					W14-3: NO PASSING ZONE No Passing Zone	REMOVE SIGN FOR RESET & RESET SIGN				12.0		1		

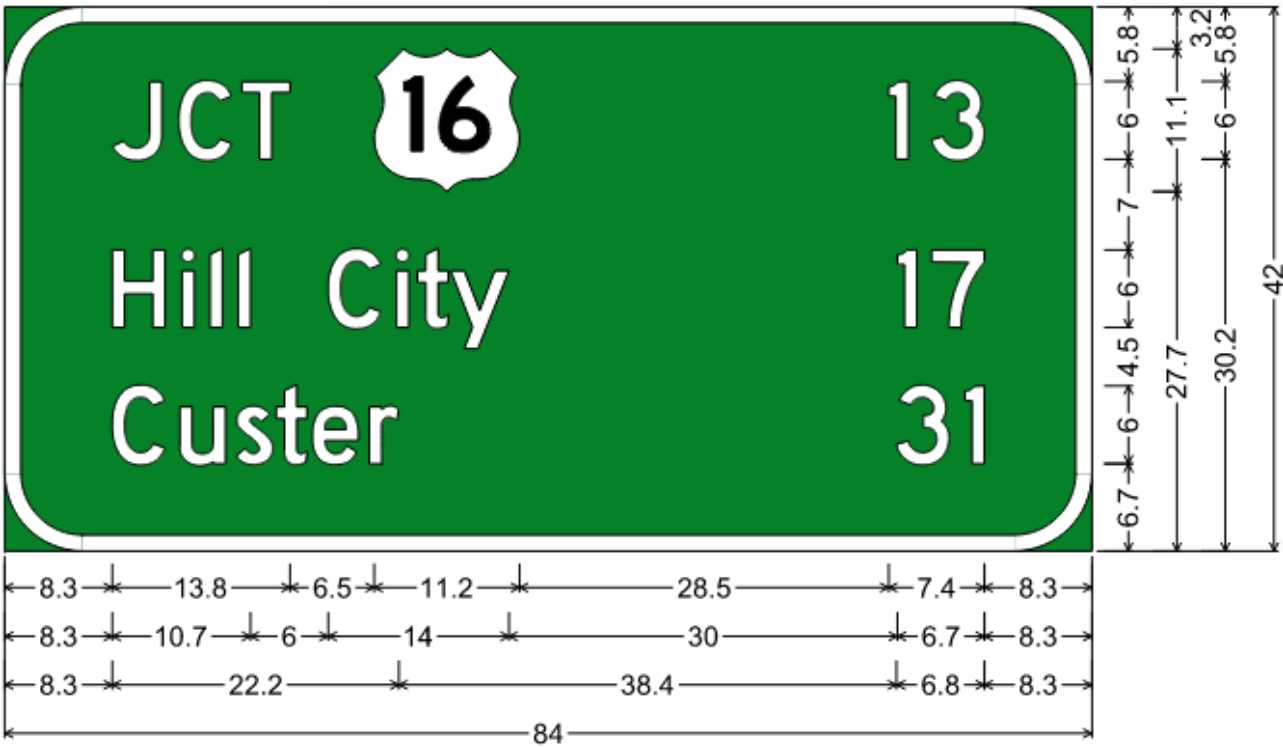
SIGN TABLE

PCN 03BD - US HWY 385 PERMANENT SIGNING																						FLAT ALUMINUM		REMOVE SIGN	REMOVE SIGN FOR RESET & RESET SIGNS	NEW DESIGN
HWY	Sta.	SIGN										POST					SIGN DESCRIPTION	WORK TO BE DONE	LF of 2"	LF of 2 1/2"	SQFT IV	SQFT XI				
		Side of Road	Width (in)	Height (in)	Direction Facing	Location	New Sign	Sign Type	Remove Existing	Square Footage	Sheeting Type	New Post	Length (ft)	Size (in)	# of Posts	Shear Slip Base										
US 385	119+90	Left	30	30	West	ROW	NO	FLAT ALUM	YES	5.2	XI	NO					R1-1: STOP STOP	REMOVE SIGN FOR RESET & RESET SIGN						1		
US 385	122+10	Right	24	36	South	ROW	NO	FLAT ALUM	YES	6	XI	NO					R5-7A: OFF ROAD TRAVEL PROHIBITED FOUR WHEELER SIGNS	REMOVE SIGN FOR RESET & RESET SIGN						1		
US 385	127+00	Right	30	30	South	ROW	NO	FLAT ALUM	YES	6.25	XI	NO					W1-4L: LEFT REVERSE CURVE ARROW REVERSE CURVE LEFT	REMOVE SIGN FOR RESET & RESET SIGN						1		
US 385	133+20	Right	30	30	East	ROW	YES	FLAT ALUM	YES	5.2	XI	YES	8	2.00	1.00	NO	R1-1: STOP STOP	REMOVE SIGN, INSTALL NEW SIGN ON NEW POST	8.0			5.2	1			
US 385	142+60	Right	24	36	North	ROW	NO	FLAT ALUM	YES	6	XI	NO					R5-7A: OFF ROAD TRAVEL PROHIBITED FOUR WHEELER SIGNS	REMOVE SIGN FOR RESET & RESET SIGN						1		
US 385	143+00	Right	24	12	South	ROW	YES	FLAT ALUM	YES	2	XI	YES	8	2.00	1.00	NO	M3-1A: DIRECTION MARKER - NORTH - US NORTH CARDINAL	REMOVE SIGN, INSTALL NEW SIGN ON NEW POST	8.0			2.0	1			
US 385	143+00	Right	30	24	South	ROW	YES	FLAT ALUM	YES	5	XI	NO					M1-4: ROUTE MARKER (US HIGHWAYS) ROUTE MARKER US 385					5.0				
US 385	152+00	Right	30	30	South	ROW	NO	FLAT ALUM	YES	6.25	XI	YES	10	2.00	1.00	NO	W2-2: SIDE ROAD 90 DEGREE (SYM) SIDE ROAD SYMBOL 90 DEGREE	REMOVE SIGN FOR RESET & RESET SIGN ON NEW POST	10.0				1			
US 385	153+20	Right	30	30	South	ROW	YES	FLAT ALUM	YES	6.25	IV	NO					W1-2L: LEFT CURVE ARROW Curve Left	REMOVE SIGN, INSTALL NEW SIGN ON EXISTING POSTS			6.3		1			
US 385	155+30	Right	72	18	South	ROW	YES	FLAT ALUM	YES	9	XI	NO					D9-10F: T.O.D.-TOURIST ORIENTATED DIRECTION SIGN HAPPY TRAILS CABINS 5.0	REMOVE SIGN, INSTALL NEW SIGN ON EXISTING POSTS				14.0	1		X	
US 386	165+10	Right	24	24	South	ROW	NO	FLAT ALUM	YES	4	XI	YES	8	2.00	1.00	NO	US Forest Service route Marker "Deer Creek"	REMOVE SIGN FOR RESET & RESET SIGN ON NEW POST	8.0					1		
US 385	165+20	Right	108	24	South	ROW	YES	FLAT ALUM	YES	18	XI	NO					D1-1A: DESTINATION BOARD - 1 LINE W/ARROW (6"UC & LC) Silver City 5	REMOVE SIGN, INSTALL NEW SIGN ON EXISTING POSTS				10.5	1		X	
US 385	166+80	Left	36	36	North	ROW	NO	FLAT ALUM	YES	9	XI	NO					M1-4: ROUTE MARKER (US HIGHWAYS) ROUTE MARKER US 385	REMOVE SIGN FOR RESET AND RESET SIGN					1			
US 385	166+80	Left	24	12	North	ROW	NO	FLAT ALUM	YES	2	XI	NO					M3-3A: DIRECTIONAL MARKER - SOUTH - US SOUTH CARDINAL									
US 385	167+50	Left	30	30	West	ROW	NO	FLAT ALUM	YES	5.2	XI	NO					R1-1: STOP Stop	REMOVE SIGN FOR RESET & RESET SIGN						1		
US 385	167+60	Right	24	24	South	ROW	YES	FLAT ALUM	YES	4	XI	YES	8	2.00	1.00	NO	M1-4: ROUTE MARKER (US HIGHWAYS) ROUTE MARKER US 385	REMOVE SIGN, INSTALL NEW SIGN ON NEW POST	8.0			4.0	1			
US 385	167+60	Right	24	12	South	ROW	NO	FLAT ALUM	YES	2	XI	NO					M3-1A: DIRECTION MARKER - NORTH - US NORTH CARDINAL									
US 386	169+50	Left	24	24	North	ROW	NO	FLAT ALUM	YES	4	XI	NO					US Forest Service route Marker "Deer Creek"	REMOVE SIGN FOR RESET & RESET SIGN						1		
US 385	171+10	Left	120	24	North	ROW	NO	FLAT ALUM	YES	20	XI	NO					D1-1A: DESTINATION BOARD - 1 LINE W/ARROW (6"UC & LC) Silver City 5	REMOVE SIGN FOR RESET & RESET SIGN						1		
US 385	172+20	Left	30	30	North	ROW	YES	FLAT ALUM	YES	6.25	XI	NO					W1-2R: RIGHT CURVE ARROW RIGHT CURVE SYMBOL	REMOVE SIGN, INSTALL NEW SIGN ON EXISTING POST				6.3	1			
US 385	176+90	Right	48	36	North	ROW	YES	FLAT ALUM	YES	12	XI	YES	9	2.00	1.00	NO	W14-3: NO PASSING ZONE NO PASSING ZONE	REMOVE SIGN, INSTALL NEW SIGN ON NEW POST	9.0			12.0	1			
US 385	177+00	Left	30	30	North	ROW	NO	FLAT ALUM	YES	6.25	XI	NO					W2-2: SIDE ROAD 90 DEGREE (SYM) SIDE ROAD SYMBOL 90 DEGREE	REMOVE SIGN FOR RESET & RESET SIGN						1		
US 385	229+00	Left	48	36	South	ROW	YES	FLAT ALUM	YES	12	XI	NO					W14-3: NO PASSING ZONE NO PASSING ZONE	REMOVE SIGN, INSTALL NEW SIGN ON EXISTING POST				12.0	1			
US 385	229+90	Right	30	30	South	ROW	NO	FLAT ALUM	YES	6.25	XI	YES	9	2.00	1.00	NO	W1-4R: RIGHT REVERSE CURVE ARROW REVERSE CURVE RIGHT	REMOVE SIGN, INSTALL EXISTING SIGN ON NEW POST	9.0				1			
US 385	230+50	Right	30	30	South	ROW	NO	FLAT ALUM	YES	6.25	XI	NO					W1-2R: RIGHT CURVE ARROW RIGHT CURVE SYMBOL	REMOVE SIGN FOR RESET & RESET SIGN						1		
US 385	232+10	Left	24	24	North	ROW	NO	FLAT ALUM	YES	4	I	NO					I10-3: FATALITY MARKER/ THINK / WHY DIE why die	REMOVE SIGN					1			
US 385	232+30	Left	30	30	North	ROW	NO	FLAT ALUM	YES	6.25	IV	NO					W1-4R: RIGHT REVERSE CURVE ARROW REVERSE CURVE RIGHT	REMOVE SIGN FOR RESET & RESET SIGN						1		
US 385	232+60	Left	30	30	North	ROW	NO	FLAT ALUM	YES	6.25	XI	YES	9	2.00	1.00	NO	W1-2L: LEFT CURVE ARROW LEFT CURVE SYMBOL	REMOVE SIGN FOR RESET & RESET SIGN ON NEW POST	10.0					1		

SIGN TABLE

PCN 03BD - US HWY 385 PERMANENT SIGNING																						FLAT ALUMINUM		REMOVE SIGN	REMOVE SIGN FOR RESET & RESET SIGNS	NEW DESIGN
HWY	Sta.	SIGN										POST					SIGN DESCRIPTION	WORK TO BE DONE	LF of 2"	LF of 2 1/2"	SQFT IV	SQFT XI				
		Side of Road	Width (in)	Height (in)	Direction Facing	Location	New Sign	Sign Type	Remove Existing	Square Footage	Sheeting Type	New Post	Length (ft)	Size (in)	# of Posts	Shear Slip Base										
US 385	233+10	Right	48	36	North	ROW	YES	FLAT ALUM	YES	12	XI	YES	8	2.00	1.00	NO	W14-3: NO PASSING ZONE No Passing Zone	REMOVE SIGN AND REPLACE WITH NEW SIGN ON NEW POST	8.0			12.0	1			
US 385	233+50	Right	30	30	South	ROW	YES	FLAT ALUM	YES	6.25	IV	NO					W1-2L: LEFT CURVE ARROW LEFT CURVE SYMBOL	REMOVE SIGN FOR RESET & RESET NEW SIGN ON EXISTING POST			6.3			1		
US 385	237+50	Other	30	30	South	ROW	NO	FLAT ALUM	YES	6.25	XI	NO					W11-15: BIKE AND PEDESTRIAN CROSSING COMBINATION (SYM) Bike and Pedestrian Crossing	REMOVE SIGN FOR RESET & RESET SIGN					1			
US 385	237+50	Other	24	18	South	ROW	NO	FLAT ALUM	YES	3	XI	NO					W11-15P: TRAIL X-ING - WORDS trail crossing									
US 385	241+00	Left	48	36	South	ROW	NO	FLAT ALUM	YES	12	XI	YES	9	2.00	1.00	NO	W14-3: NO PASSING ZONE NO PASSING ZONE	REMOVE SIGN, INSTALL EXISTING SIGN ON NEW POST	9.0				1			
US 385	245+10	Right	30	30	South	ROW	NO	FLAT ALUM	YES	6.25	XI	NO					W1-4R: RIGHT REVERSE CURVE ARROW REVERSE CURVE SYMBOL	REMOVE SIGN FOR RESET & RESET SIGN						1		
US 385	247+00	Other	30	30	North	ROW	NO	FLAT ALUM	YES	6.25	XI	NO					W11-15: BIKE AND PEDESTRIAN CROSSING COMBINATION (SYM) NO PEDESTRIAN CROSSING - SYMBOL	REMOVE SIGN FOR RESET & RESET SIGN					1			
US 385	247+00	Other	18	18	North	ROW	NO	FLAT ALUM	YES	2.25	XI	NO					W11-15P: TRAIL X-ING - WORDS trail crossing									
US 385	247+40	Right	30	30	East	ROW	YES	FLAT ALUM	YES	5.2	XI	YES	8	2.00	1.00	NO	R1-1: STOP STOP	REMOVE SIGN, INSTALL NEW SIGN ON NEW POST	8.0			5.2	1			
US 385	247+40	Left	30	30	North	ROW	NO	FLAT ALUM	YES	6.25	XI	NO					W1-2R: RIGHT CURVE ARROW CURVE RIGHT	REMOVE SIGN FOR RESET & RESET SIGN						1		
US 385	255+00	Left	30	30	NorthWest	ROW	NO	FLAT ALUM	YES	6.25	XI	NO					I10-3: FATALITY MARKER/ THINK / WHY DIE THINK	REMOVE SIGN					1			
US 385	269+00	Right	30	30	South	ROW	NO	FLAT ALUM	YES	6.25	XI	NO					W1-2R: RIGHT CURVE ARROW CURVE RIGHT	REMOVE SIGN FOR RESET & RESET SIGN						1		
US 385	271+10	Left	30	30	North	ROW	NO	FLAT ALUM	YES	6.25	XI	NO					W1-4R: RIGHT REVERSE CURVE ARROW Reverse Curve Right	REMOVE SIGN FOR RESET & RESET SIGN						1		
US 385	288+20	Left	30	30	North	ROW	NO	FLAT ALUM	YES	6.25	XI	NO					W1-2L: LEFT CURVE ARROW Curve Left	REMOVE SIGN FOR RESET & RESET SIGN						1		
US 385	293+80	Left	30	30	West	ROW	YES	FLAT ALUM	YES	5.2	XI	NO					R1-1: STOP STOP	REMOVE SIGN FOR RESET & RESET NEW SIGN ON EXISTING POST				5.2		1		
US 385	295+00	Right	48	36	North	ROW	NO	FLAT ALUM	YES	12	XI	NO					W14-3: NO PASSING ZONE No Passing Zone	REMOVE SIGN FOR RESET & RESET NEW SIGN ON EXISTING POST				12.0		1		
US 385	297+50	Right	30	30	South	ROW	NO	FLAT ALUM	YES	6.25	XI	NO					W1-2L: LEFT CURVE ARROW LEFT CURVE SYMBOL	REMOVE SIGN FOR RESET & RESET NEW SIGN ON EXISTING POST				6.3		1		
US 385	300+40	Left	36	24	South	ROW	NO	FLAT ALUM	YES	6	XI	NO					W14-3: NO PASSING ZONE NO PASSING ZONE	REMOVE SIGN FOR RESET & RESET NEW SIGN ON EXISTING POST				6.0		1		
US 385	306+00	Right	24	24	South	ROW	NO	FLAT ALUM	YES	4	XI	NO					radar speed feedback sign (during constr., store sign with solar panel facing southern sun)	REMOVE SIGN FOR RESET & RESET SIGN						1		
US 385	306+00	Right	24	24	South	ROW	NO	FLAT ALUM	YES	4	XI	NO					W13-1P: ADVISORY SPEED PLATE - NO NUMBERS ADVISORY SPEED PLATE									
US 385	306+00	Right	30	30	South	ROW	NO	FLAT ALUM	YES	6.25	XI	NO					SS1-1: SPECIAL SERVICES special design / three approaches left-one on right									
US 385	309+00	Right	72	18	South	ROW	YES	FLAT ALUM	YES	9	XI	NO					D9-10F: T.O.D.-TOURIST ORIENTATED DIRECTION SIGN Wonderland cave 11	REMOVE SIGN, INSTALL NEW SIGN ON EXISTING POSTS			9.0		1		x	
US 385	311+20	Left	24	12	North	ROW	NO	FLAT ALUM	YES	2	XI	NO					M3-3A: DIRECTIONAL MARKER - SOUTH - US SOUTH CARDINAL	REMOVE SIGN FOR RESET & RESET SIGN						1		
US 385	311+20	Left	30	24	North	ROW	NO	FLAT ALUM	YES	5	XI	NO					M1-4: ROUTE MARKER (US HIGHWAYS) ROUTE MARKER US 385									
US 385	312+26	Right	36	36	South	ROW	YES	FLAT ALUM	YES	9	XI	YES	12	2.50	2.00	YES	RS-NS1A: RECREATION DESTINATION WORDS W/ ARROW CENTENIAL TRAIL TRAILHEAD ---> n n n	REMOVE SIGN, INSTALL NEW SIGN ON EXISTING POSTS (NEW BROWN/WHITE SIGNS, REUSE GREEN/WHITE SIGN)		24.0		18.8		1	xx	
US 385	312+26	Right	60	24	South	ROW	NO	FLAT ALUM	YES	10	XI	NO					D1-1: DESTINATION BOARD - 1 LINE W/ARROW (6" UC ; 4.5" LC) Nemo 7 -----> n n									
US 385	312+26	Right	12	36	South	ROW	YES	FLAT ALUM	YES	3	IV	NO					RS-NS1: RECREATION DESTINATION WORDS ONLY PILOT KNOB									

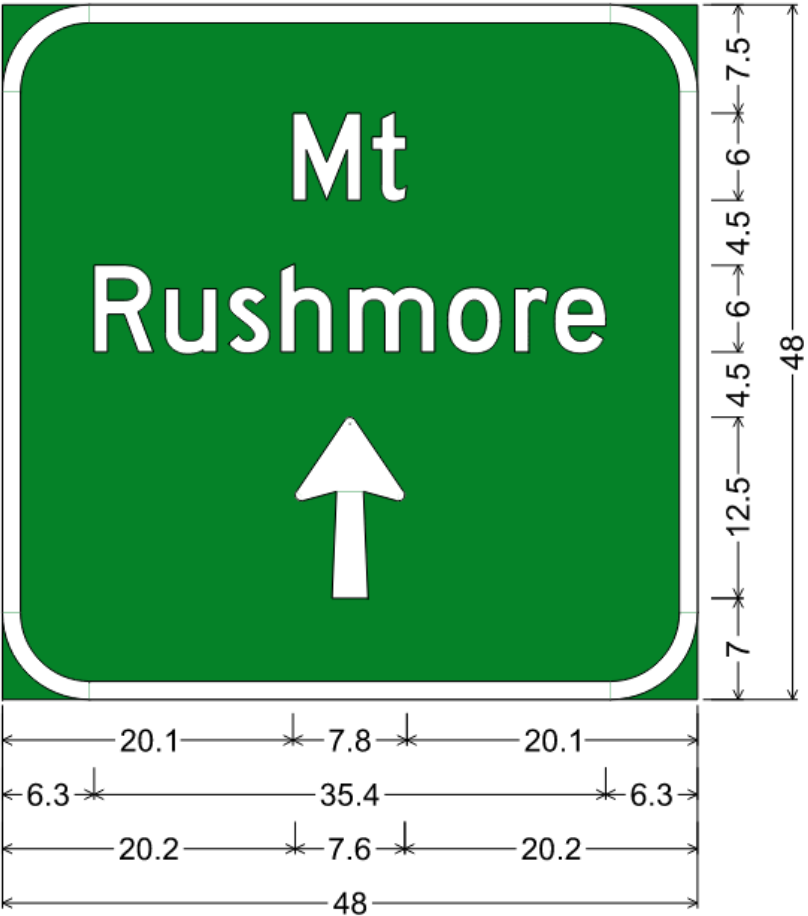
SIGN DESIGNS



6.0" Radius, 1.3" Border, White on Green;
 "JCT ", D 2K; US 16 12.0" D 2K; "13", D 2K; "Hill City", D 2K; "17", D 2K;
 "Custer", D 2K; "31", D 2K;

Table of distances between letter and object lefts

8.3	J	C	T	●	1	3					
8.3	5.2	4.8	10.3	39.7	3.3	4.1	8.3				
8.3	H	i	l	l	C	i	t	y	l	7	
8.3	5.4	2.2	2.1	7.0	5.3	1.6	2.6	34.5	2.6	4.1	8.3
8.3	C	u	s	t	e	r	3	l			
8.3	5.2	4.4	3.1	2.8	4.4	40.7	5.3	1.5	8.3		

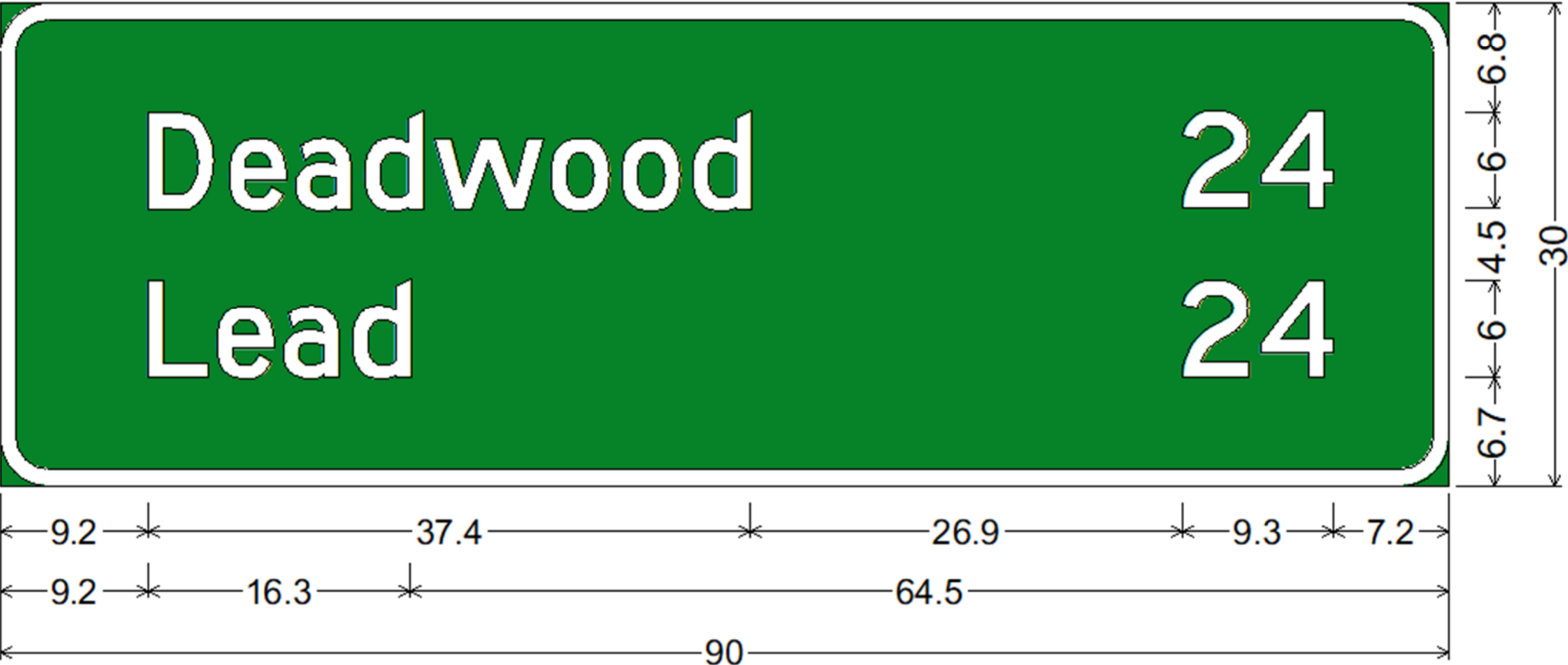


6.0" Radius, 1.3" Border, White on Green;
 "Mt", D 2K; "Rushmore", D 2K;
 Arrow 80 - 25.0" 90°;

Table of distances between letter and object lefts

20.1	M	t	20.1						
6.3	R	u	s	h	m	o	r	e	6.3
20.2	↑	20.2							

SIGN DESIGNS

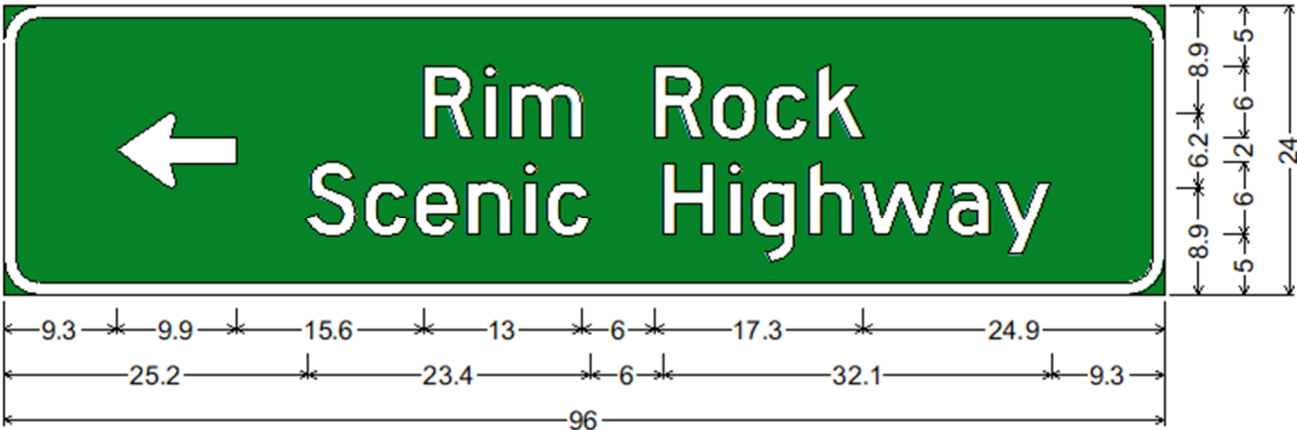


3.0" Radius, 1.0" Border, White on Green;
 "Deadwood", D 2K; " 24", D 2K; "Lead", D 2K; " 24", D 2K;

Table of distances between letter and object lefts

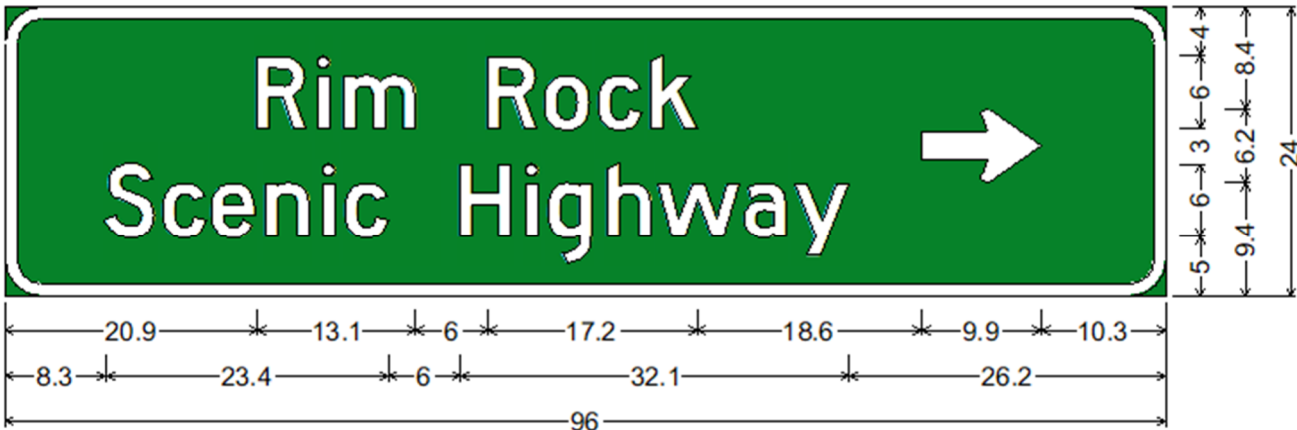
	D	e	a	d	w	o	o	d	2	4	
9.2	5.1	4.0	4.4	4.3	7.2	4.4	4.4	30.5	4.8	4.5	7.2
	L	e	a	d	2	4					
9.2	4.3	4.1	4.3	51.6	4.8	4.5	7.2				

SIGN DESIGNS



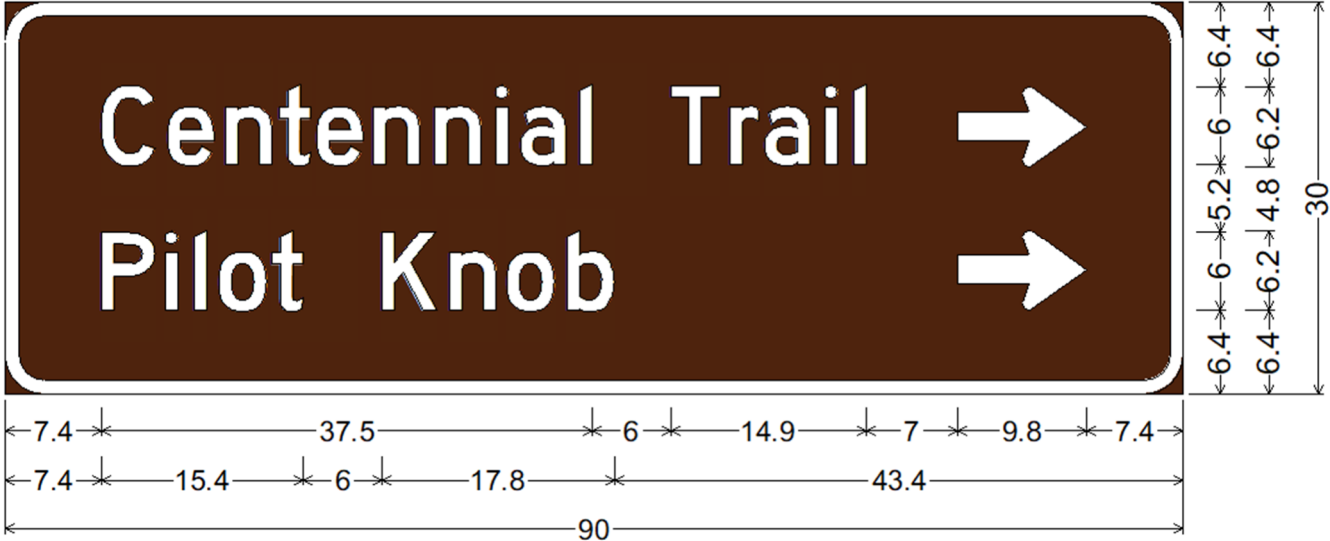
3.0" Radius, 1.0" Border, White on Green;
Standard Arrow Custom 9.9" X 6.1" 180°; "Rim Rock ", D 2K; "Scenic Highway", D 2K;
Table of distances between letter and object lefts

9.3	←	R	i	m	R	o	c	k						
25.2	S	c	e	n	i	c	H	i	g	h	w	a	y	9.3



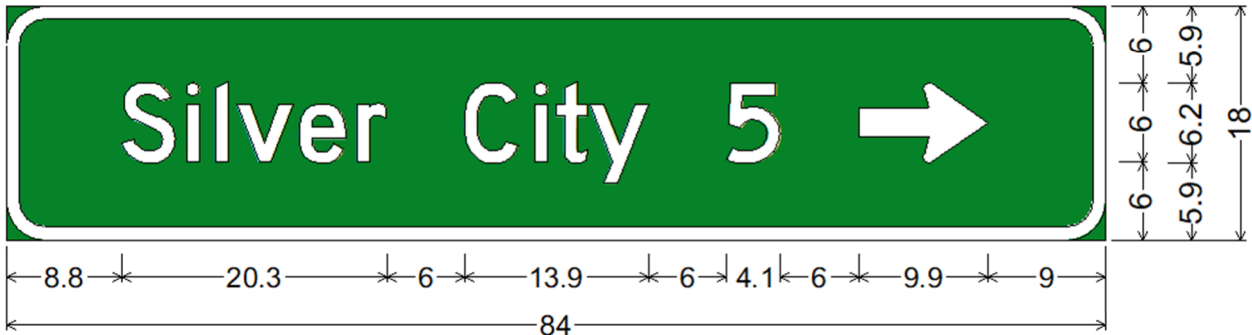
3.0" Radius, 1.0" Border, White on Green;
"Rim Rock", D 2K; "Scenic Highway", D 2K; Standard Arrow Custom 9.9" X 6.1" 0°;
Table of distances between letter and object lefts

20.9	R	i	m	R	o	c	k	→	10.3					
8.3	S	c	e	n	i	c	H	i	g	h	w	a	y	26.2



3.0" Radius, 1.0" Border, White on Brown;
"Centennial Trail", D 2K; Standard Arrow Custom 9.9" X 6.1" 0°; "Pilot Knob", D 2K;
Standard Arrow Custom 9.9" X 6.1" 0°;
Table of distances between letter and object lefts

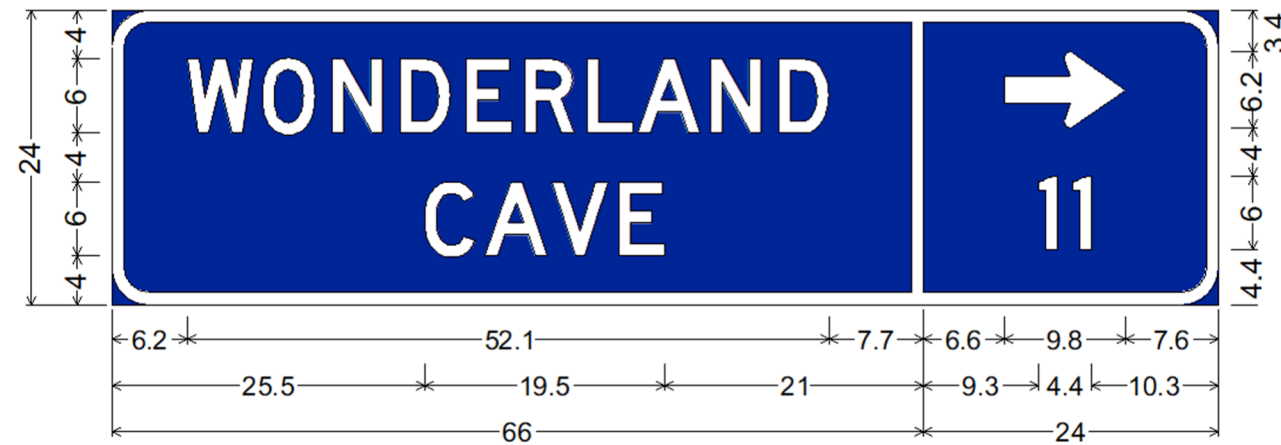
7.4	C	e	n	t	e	n	n	i	a	i	T	r	a	i	l	→	7.4
7.4	P	i	l	o	t	K	n	o	b	→	7.4						



3.0" Radius, 1.0" Border, White on Green;
"Silver City 5", D 2K; Standard Arrow Custom 9.9" X 6.1" 0°;
Table of distances between letter and object lefts

8.8	S	i	l	v	e	r	C	i	t	y	5	→	9.0
-----	---	---	---	---	---	---	---	---	---	---	---	---	-----

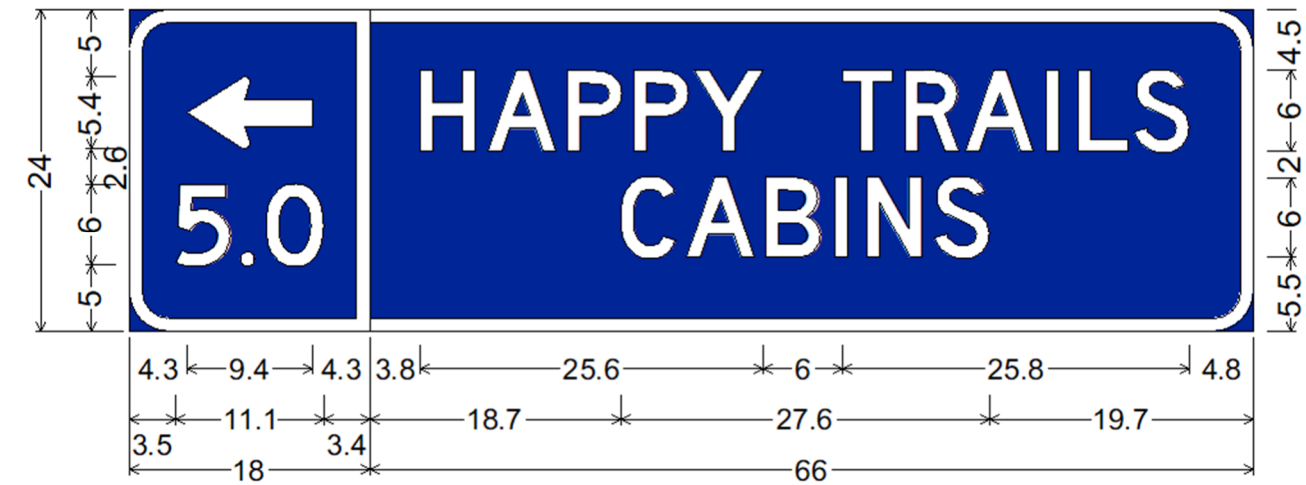
SIGN DESIGNS



3.0" Radius, 1.0" Border, White on Blue;
"WONDERLAND ", D 2K; "CAVE", D 2K;

3.0" Radius, 1.0" Border, White on Blue;
Standard Arrow Custom 9.9" X 6.1" 0°; "11", D 2K;
Table of distances between letter and object lefts

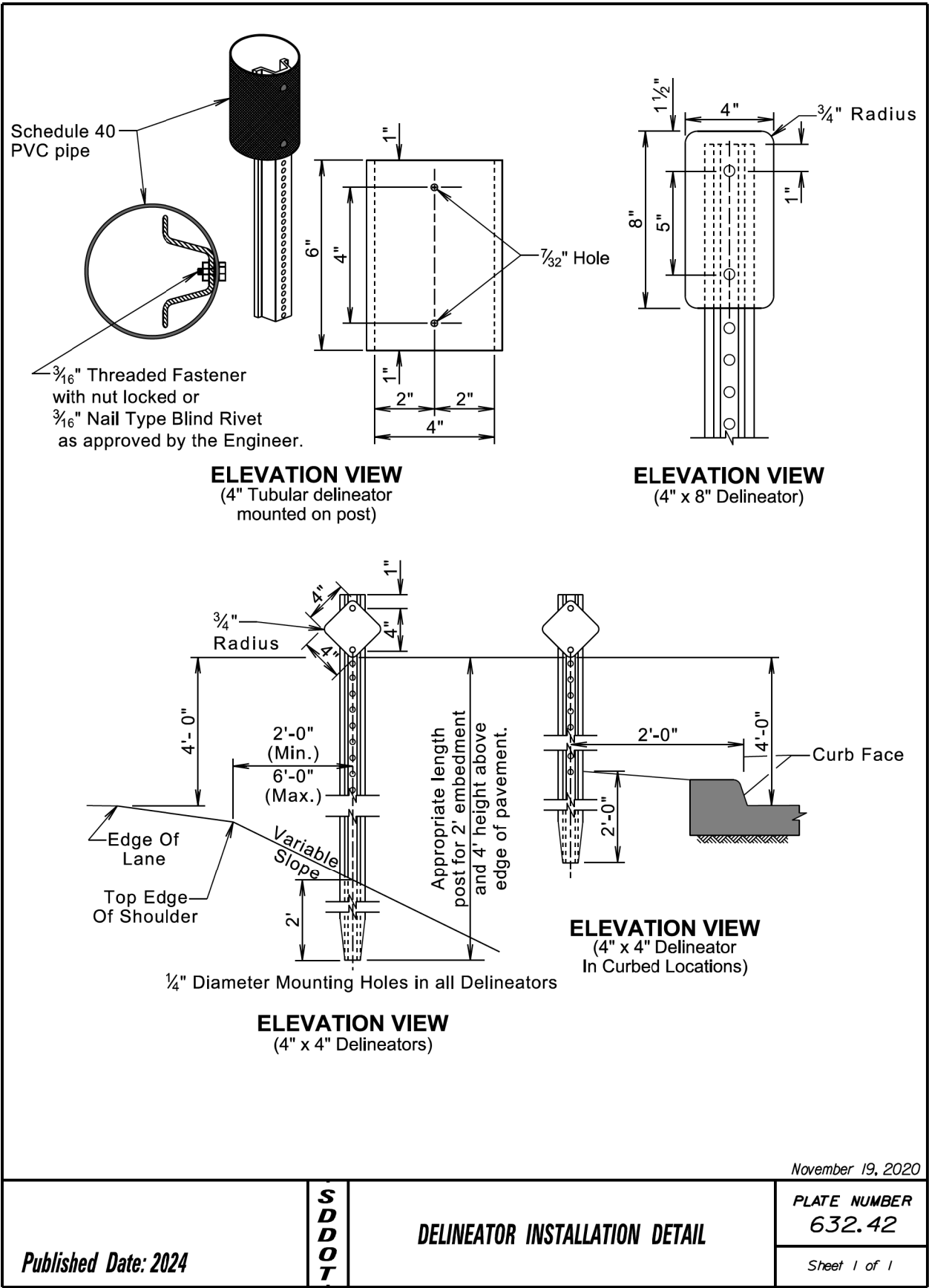
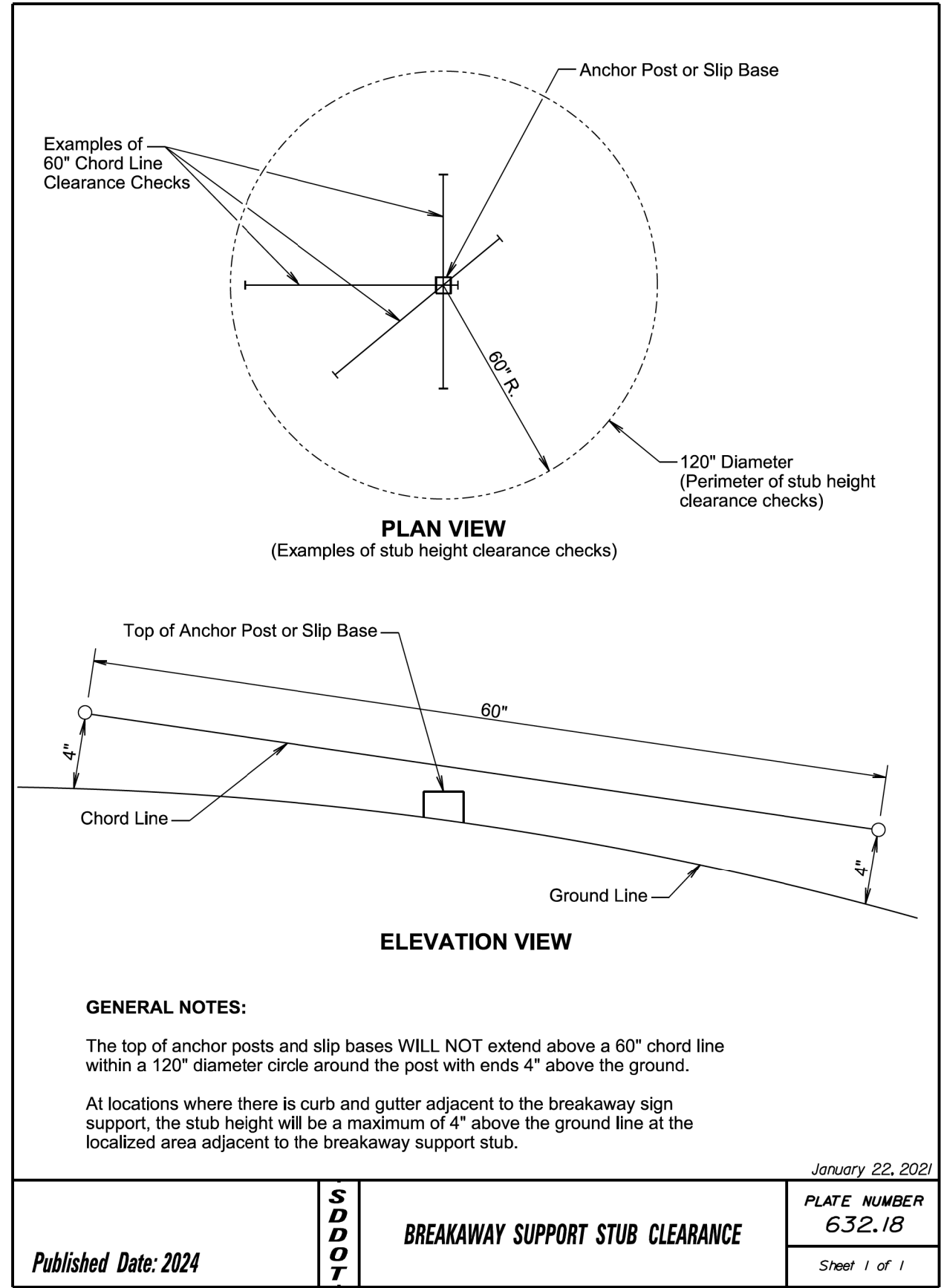
	W	O	N	D	E	R	L	A	N	D	
6.2	6.1	5.6	5.5	5.4	4.7	5.1	4.1	6.0	5.5	4.1	7.7
	C	A	V	E							
25.5	4.9	5.4	5.5	3.7	21.0						
	➡										
6.6	9.8	7.6									
	I	I									
9.3	2.9	1.5	10.3								

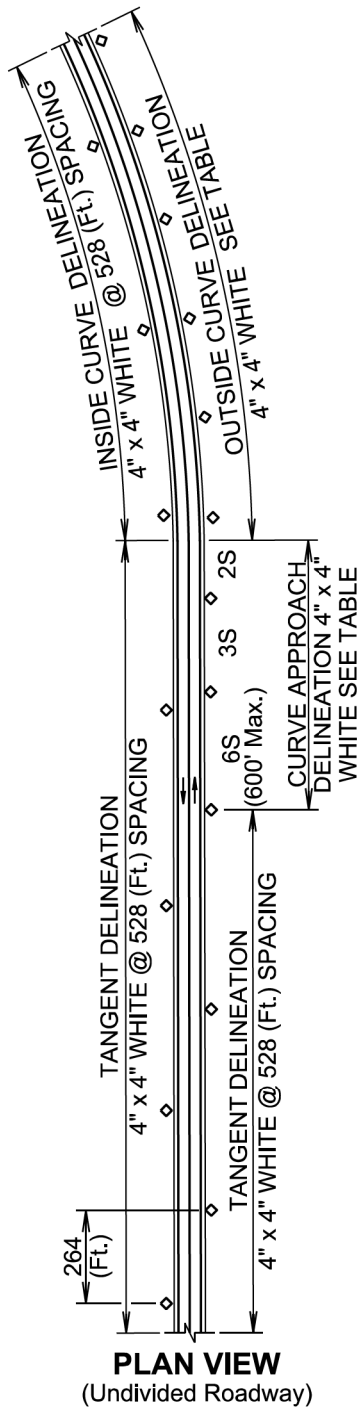
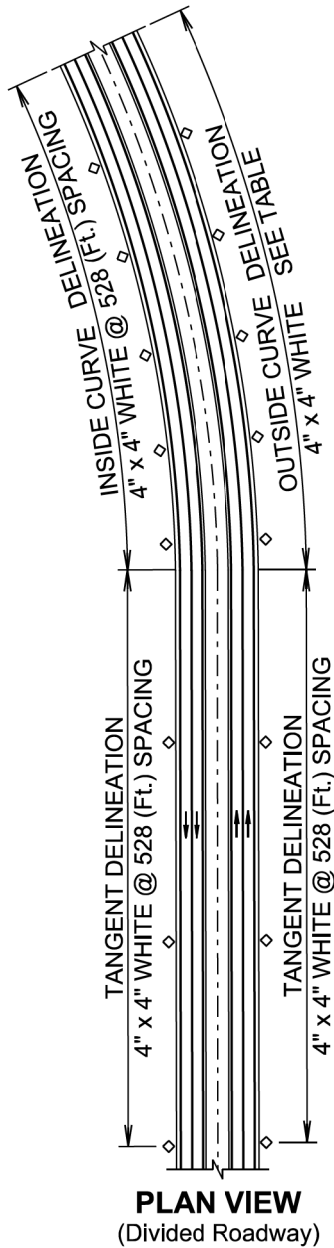


3.0" Radius, 1.0" Border, White on Blue;
Standard Arrow Custom 9.4" X 5.4" 180°; "5.0", D 2K;

3.0" Radius, 1.0" Border, White on Blue;
 "HAPPY TRAILS", D 2K; "CABINS", D 2K;
 Table of distances between letter and object lefts

4.3	←	4.3																						
3.5	5	4.9	1.9	0	4.3	3.4																		
3.8	H	5.0	A	6.0	P	5.0	P	4.4	Y	11.2	T	4.6	R	4.5	A	6.0	I	2.4	L	4.2	S	4.1	4.8	
18.7	C	4.9	A	6.0	B	5.1	I	2.4	N	5.1	S	4.1	19.7											





January 22, 2022

Published Date: 2024	S D D O T	DELINEATOR INSTALLATION SPACING	PLATE NUMBER
			632.46
			Sheet 1 of 2

GENERAL NOTES:

Delineators will be located 8 feet outside the outer edge of shoulder. When a roadside barrier or other obstruction intrudes into the space between the pavement edge and the extension of the line of delineators, the delineators should be in line with the barrier or in line with the innermost edge of the obstruction.

When normal spacing is interrupted by driveways, crossroads, or approaches, delineators falling within such areas may be moved in either direction a distance not exceeding one-quarter of the standard spacing. Delineators still falling within such areas should be eliminated.

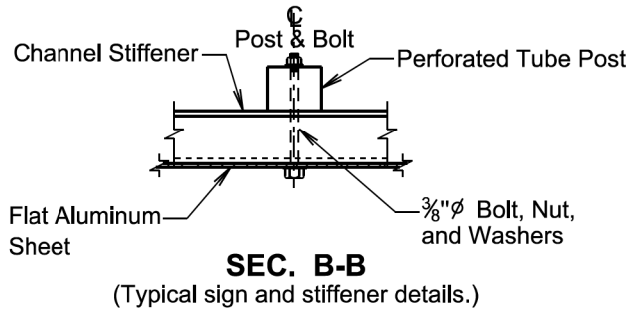
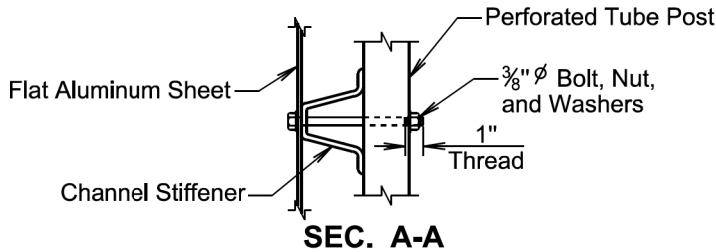
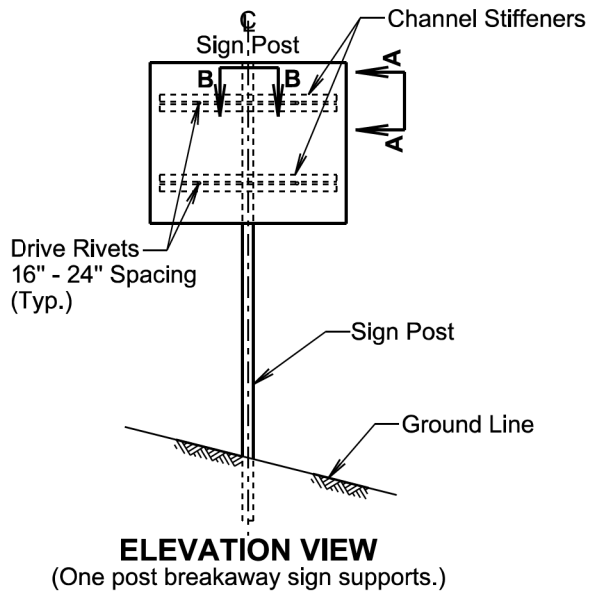
The spacing for specific radii may be interpolated from the table. The minimum spacing should be 20 feet. The spacing on curves should not exceed 300 feet. In advance of or beyond a curve, and proceeding away from the end of the curve, the spacing of the first delineator is 2S, the second 3S, and the third 6S, but not to exceed 300 feet. S refers to the delineator spacing for specific radii computed from the formula $S = 3\sqrt{R - 50}$. The distances for S shown in the table were rounded to the nearest 5 feet.

Curve approach delineation is not required if curve delineation spacing exceeds 100 ft.

DELINEATOR SPACING OUTSIDE CURVE				
Radius of Curve (Ft.)	Curve Delineator Spacing (Ft.)	Curve Approach Spacing (Ft.)		
		A	B	C
50	20	40	65	125
115	25	50	75	150
150	30	60	90	180
180	35	70	110	215
250	40	85	125	250
300	45	95	140	285
400	55	110	170	300
500	65	125	190	300
600	70	140	210	300
700	75	150	230	300
800	80	165	245	300
900	85	175	260	300
1000	90	185	275	300

January 22, 2022

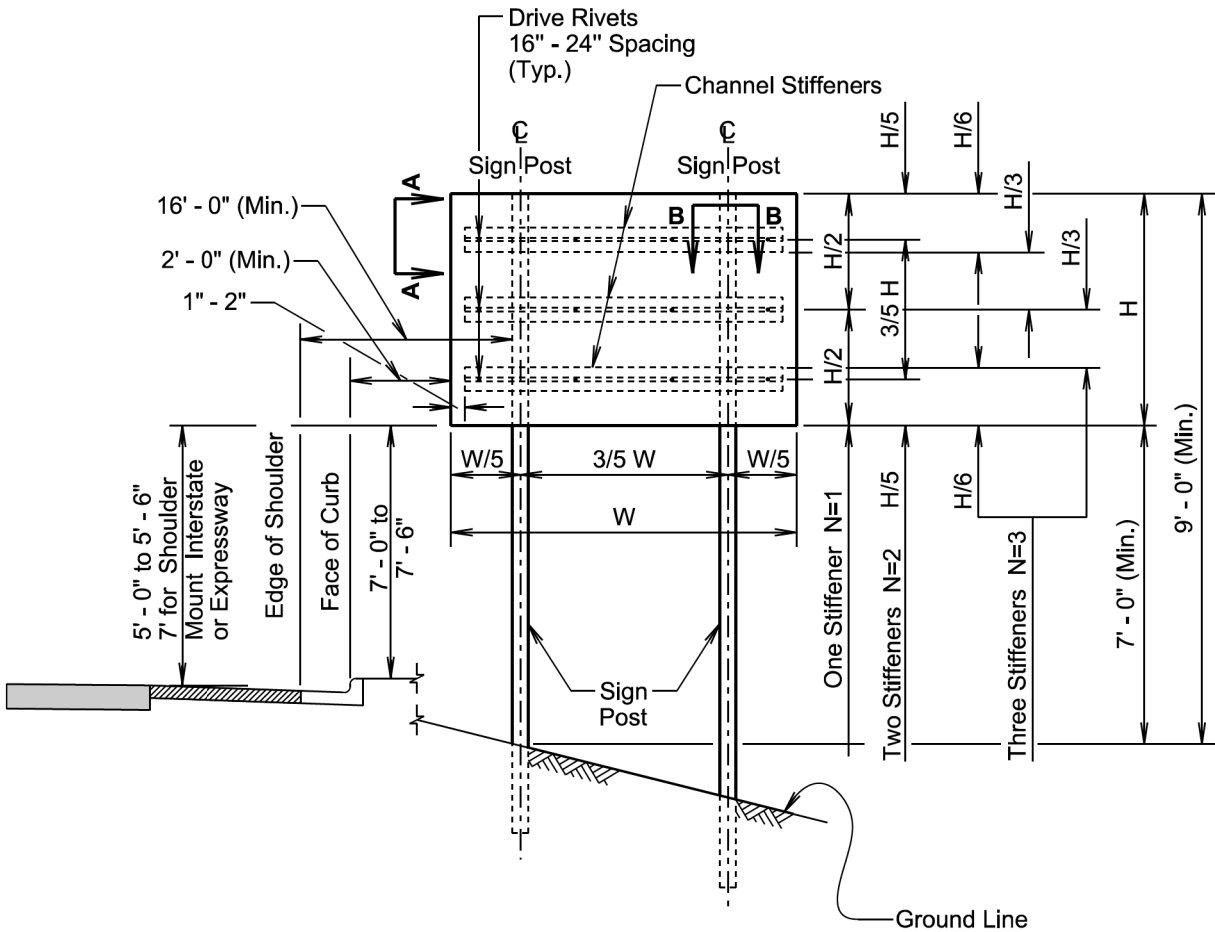
Published Date: 2024	S D D O T	DELINEATOR INSTALLATION SPACING	PLATE NUMBER
			632.46
			Sheet 2 of 2



Ø A plastic washer, as recommended by the sheeting manufacturer, will be installed between the sign face and the metal washer shown.

November 19, 2020

Published Date: 2024	S D D O T	SIGN STIFFENER DETAILS	PLATE NUMBER 632.60
			Sheet 1 of 2



TWO POST BREAKAWAY SIGN SUPPORTS

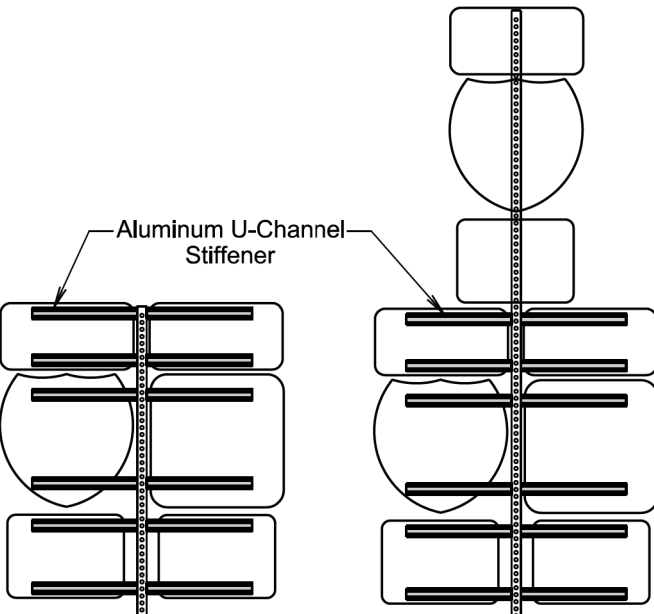
GENERAL NOTES:

The number of stiffeners used (N) will be as follows:
If $H \leq 2' - 0''$ then $N = 1$
if $2' - 0'' < H \leq 8' - 0''$ then $N = 2$
if $8' - 0'' < H \leq 15' - 0''$ then $N = 3$
where H is the vertical dimension of the sign.

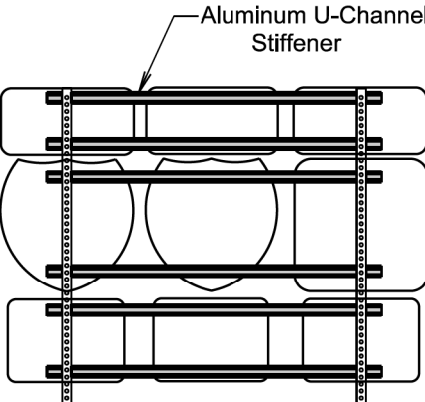
A minimum of two bolts will be required to fasten the sign to each post.

November 19, 2020

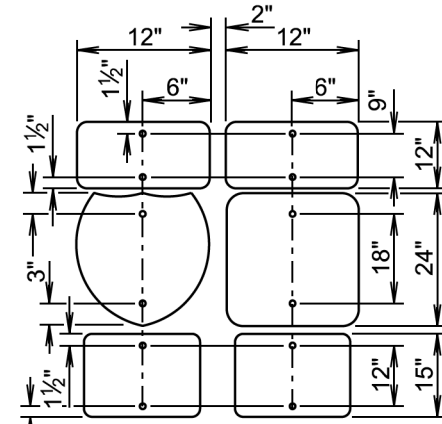
Published Date: 2024	S D D O T	SIGN STIFFENER DETAILS	PLATE NUMBER 632.60
			Sheet 2 of 2



SINGLE POST
(Back-side of signs shown)



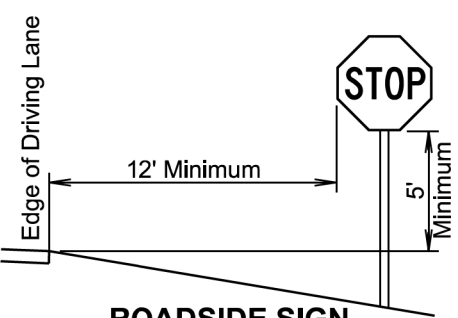
TWO POST
(Back-side of signs shown)



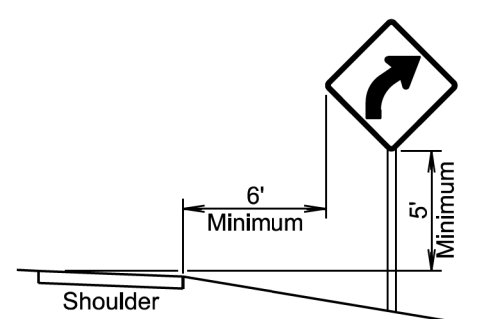
**TYPICAL ROUTE MARKER
BOLT HOLE LOCATIONS**

November 19, 2020

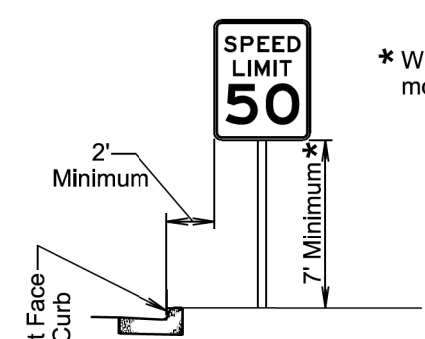
S D D O T	MULTIPLE ROUTE MARKER SIGN STIFFENER INSTALLATION DETAILS	PLATE NUMBER 632.62
		Sheet 1 of 1
		Published Date: 2024



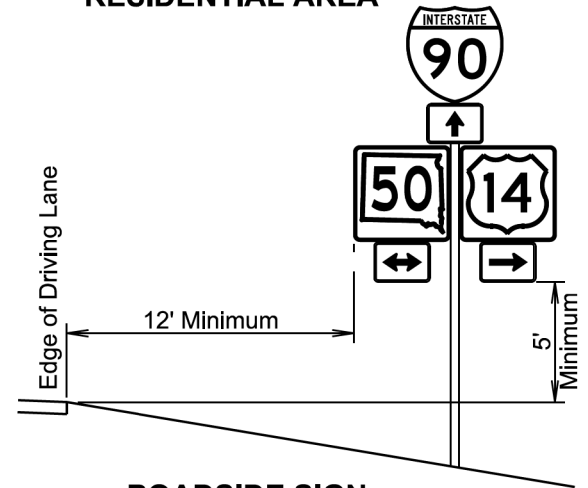
**ROADSIDE SIGN
IN RURAL AREA**



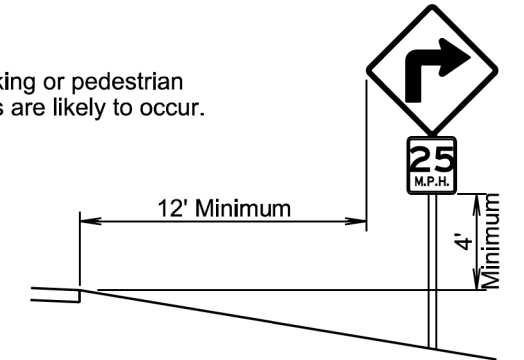
**ROADSIDE SIGN
IN RURAL AREA**
(If shoulder width is greater than 6 foot)



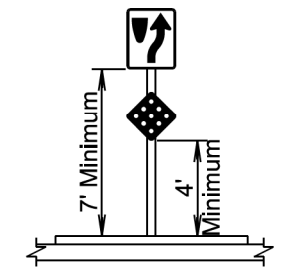
**ROADSIDE SIGN
IN BUSINESS,
COMMERCIAL, OR
RESIDENTIAL AREA**



**ROADSIDE SIGN
IN RURAL AREA**



**WARNING SIGN ADVISORY
SPEED PLAQUE IN RURAL AREA**



**SIGN ON NOSE
OF MEDIAN**

November 19, 2020

S D D O T	OFFSETS FOR SIGN INSTALLATION	PLATE NUMBER 632.90
		Sheet 1 of 1
		Published Date: 2024