

STATE OF SOUTH DAKOTA  
DEPARTMENT OF TRANSPORTATION  
PLANS FOR PROPOSED

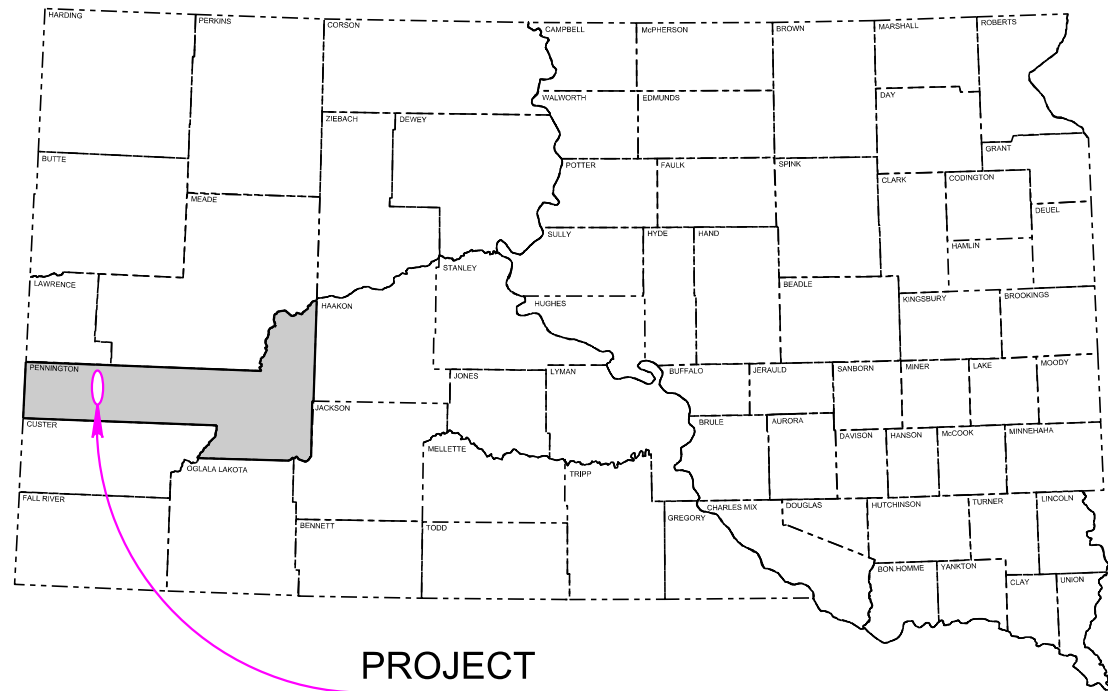
STATE OF SOUTH DAKOTA	PROJECT	SHEET	TOTAL SHEETS
	NH-PH-B 0385(51)87	1	698

Plotting Date: 4/17/2024

**PROJECT NH-PH-B 0385(51)87**  
**US HIGHWAY 385**  
**PENNINGTON COUNTY**  
GRADING, PIPE WORK, STRUCTURES

INDEX OF SECTIONS

- Section A: Estimate of Quantities and Environmental Commitments
- Section B: Grading Plans
- Section C: Traffic Control Plans
- Section D: Erosion And Sediment Control Plans
- Section E: Structure Plans
- Section F: Surfacing Plans
- Section M: Pavement Marking Plans
- Section S: Permanent Signing Plans
- Section X: Cross Sections
- Section Z: Pipe Sections



PCN 03VD

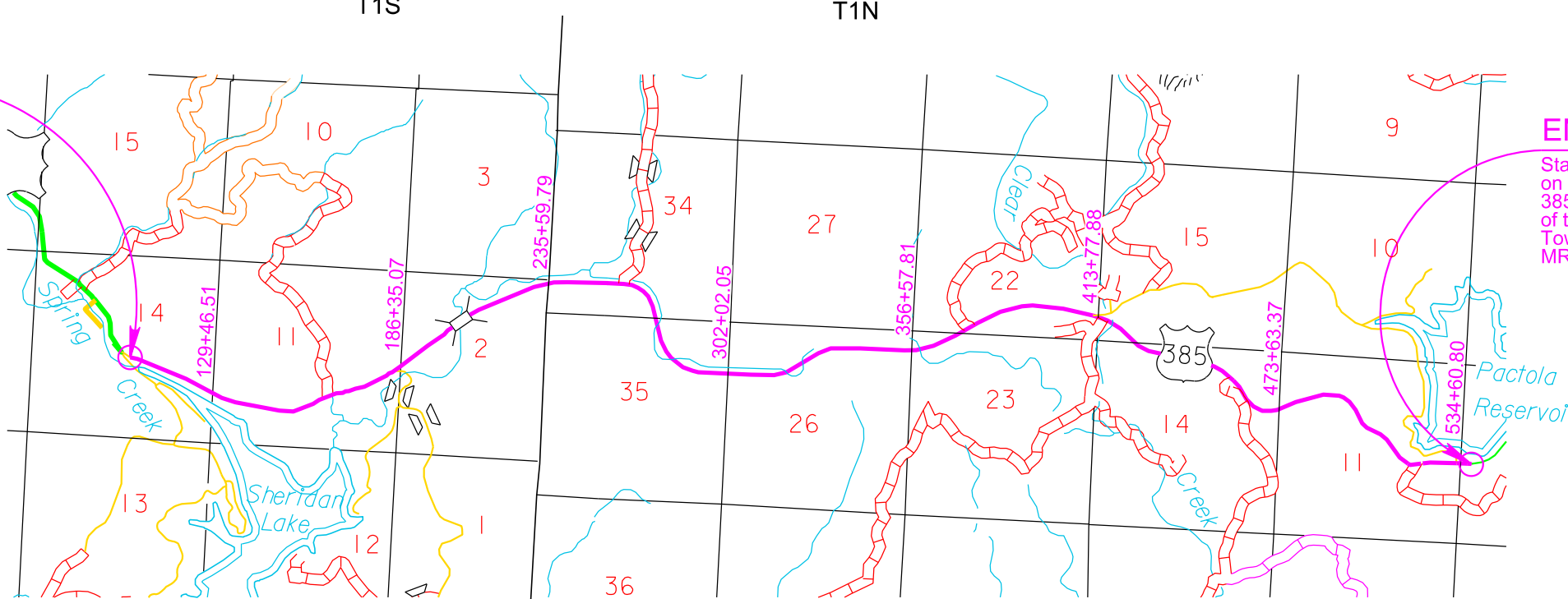


**BEGIN NH-PH-B 0385(51)87**

Station 106+72.48 = Station 1+16.16  
on PCEMS 5616 located at  
436.73 Feet East & 493.95 Feet North  
of the C1/4 Corner of Section 14,  
Township 1 South, Range 5 East of the B.H.M.  
MRM 87.00 + 0.219

**END NH-PH-B 0385(51)87**

Station 535+68.17 = Station 429+63.52  
on PCEMS 5616 located at  
385.44 Feet East & 91.48 Feet North  
of the N1/4 Corner of Section 11,  
Township 1 North, Range 5 East of the B.H.M.  
MRM 95.00 + 0.443



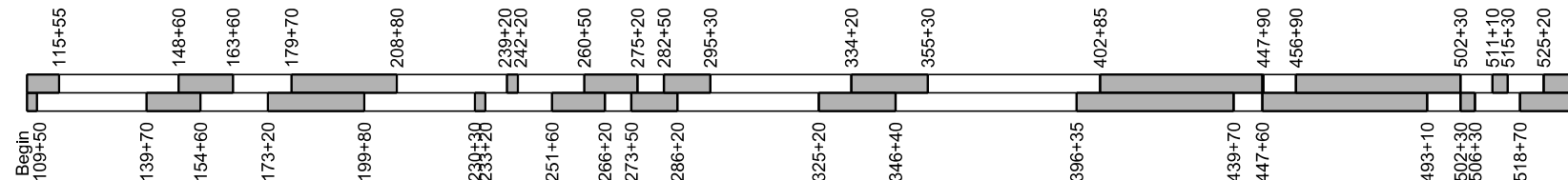
DESIGN DESIGNATION

ADT (2022)	2,364
ADT (2042)	3728
DHV	600
D	51%
T DHV	1.6%
T ADT	3.5%
V	55 MPH

STORM WATER PERMIT

Major Receiving Body of Water:  
Spring Creek, Sheridan Lake, Horse Creek, South  
Branch, Prairie Creek, Rapid Creek, Pactola  
Reservoir, Clear Creek  
Area Disturbed: 143.9 Acres  
Total Project Area: 199.0 Acres  
Approx. Begin Lat/Long: 43.9637/-103.4871

- Passing
- No Passing



This striping diagram is for informational purposes only. Actual striping for passing/no passing zones should be determined by field verified procedures.



This Highway is a "CONTROL OF ACCESS" Highway as adopted by the South Dakota Transportation Commission. Access points to be limited to those shown on the construction plans, except any additional that are required as a result of Right-Of-Way acquisition.

GROSS LENGTH	42,895.69 FEET	8.124 MILES
LENGTH OF EXCEPTIONS	0.00 FEET	0.000 MILES
NET LENGTH	42,895.69 FEET	8.124 MILES

1

October 2, 2024



Plot Scale - 1:200

GENSZ

Plotted From -

File - ...Section\_A1title.dgn

# ESTIMATE OF QUANTITIES AND ENVIRONMENTAL COMMITMENTS

Rev 7/22/2024 SBS

STATE OF SOUTH DAKOTA	PROJECT	SHEET	TOTAL SHEETS
	NH-PH-B 0385(51)87	A2	A9

## Section B - Grading

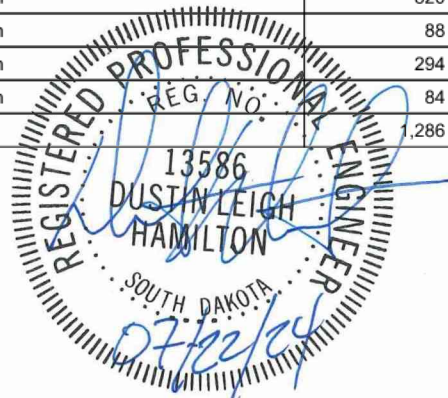
BID ITEM NUMBER	ITEM	QUANTITY	UNIT
004E0030	Maintenance of Traffic Diversion(s)	Lump Sum	LS
004E0050	Remove Traffic Diversion(s)	Lump Sum	LS
009E0010	Mobilization	Lump Sum	LS
009E3220	Reestablish Right-of-Way and Property Corner	382	Each
009E3225	Reestablish Public Land Survey System Corner	2	Each
009E3230	Grade Staking	8.990	Mile
009E3250	Miscellaneous Staking	8.462	Mile
009E3280	Slope Staking	8.462	Mile
009E3290	Structure Staking	2	Each
009E3301	Engineer Directed Surveying/Staking	200.0	Hour
009E4200	Construction Schedule, Category II	Lump Sum	LS
100E0100	Clearing	Lump Sum	LS
110E0300	Remove Concrete Curb and/or Gutter	1,210	Ft
110E0400	Remove Drop Inlet	15	Each
110E0550	Remove Cattle Guard	1	Each
110E0600	Remove Fence	33,827	Ft
110E0730	Remove Beam Guardrail	17,114.0	Ft
110E0800	Remove W Beam Guardrail End Terminal	50	Each
110E1050	Remove Asphalt Concrete Approach Pavement	6,602.0	SqYd
120E1000	Muck Excavation	21,144	CuYd
120E1100	Unclassified/Rock Excavation	1,498,226	CuYd
120E2000	Undercutting	58,607	CuYd
120E6100	Water for Embankment	12,343.9	MGal
240E0010	Obliterate Old Road	28	Sta
250E0020	Incidental Work, Grading	Lump Sum	LS
260E6010	Granular Material	200.0	Ton
421E0100	Pipe Culvert Undercut	1,216	CuYd
450E0122	18" RCP Class 2, Furnish	14	Ft
450E0130	18" RCP, Install	14	Ft
450E0142	24" RCP Class 2, Furnish	1,712	Ft
450E0143	24" RCP Class 3, Furnish	418	Ft
450E0144	24" RCP Class 4, Furnish	180	Ft
450E0150	24" RCP, Install	2,310	Ft
450E0162	30" RCP Class 2, Furnish	910	Ft
450E0163	30" RCP Class 3, Furnish	66	Ft
450E0164	30" RCP Class 4, Furnish	152	Ft
450E0165	30" RCP Class 5, Furnish	116	Ft
450E0170	30" RCP, Install	1,244	Ft
450E0182	36" RCP Class 2, Furnish	820	Ft
450E0183	36" RCP Class 3, Furnish	88	Ft
450E0184	36" RCP Class 4, Furnish	294	Ft
450E0185	36" RCP Class 5, Furnish	84	Ft
450E0190	36" RCP, Install	1,286	Ft

BID ITEM NUMBER	ITEM	QUANTITY	UNIT
450E0202	48" RCP Class 2, Furnish	164	Ft
450E0210	48" RCP, Install	164	Ft
450E0212	54" RCP Class 2, Furnish	610	Ft
450E0220	54" RCP, Install	610	Ft
450E0223	60" RCP Class 3, Furnish	106	Ft
450E0224	60" RCP Class 4, Furnish	70	Ft
450E0230	60" RCP, Install	176	Ft
450E2016	24" RCP Flared End, Furnish	6	Each
450E2017	24" RCP Flared End, Install	6	Each
450E2024	30" RCP Flared End, Furnish	4	Each
450E2025	30" RCP Flared End, Install	4	Each
450E2028	36" RCP Flared End, Furnish	13	Each
450E2029	36" RCP Flared End, Install	13	Each
450E2036	48" RCP Flared End, Furnish	4	Each
450E2037	48" RCP Flared End, Install	4	Each
450E2040	54" RCP Flared End, Furnish	12	Each
450E2041	54" RCP Flared End, Install	12	Each
450E2044	60" RCP Flared End, Furnish	2	Each
450E2045	60" RCP Flared End, Install	2	Each
450E2200	24" RCP Sloped End, Furnish	27	Each
450E2201	24" RCP Sloped End, Install	27	Each
450E2204	30" RCP Sloped End, Furnish	13	Each
450E2205	30" RCP Sloped End, Install	13	Each
450E2304	18" RCP Safety End, Furnish	1	Each
450E2307	18" RCP Safety End, Install	1	Each
450E3052	48" RCP Arch Class 2, Furnish	384	Ft
450E3060	48" RCP Arch, Install	384	Ft
450E4520	48" RCP Arch Flared End, Furnish	6	Each
450E4521	48" RCP Arch Flared End, Install	6	Each
450E4759	18" CMP 16 Gauge, Furnish	564	Ft
450E4760	18" CMP, Install	564	Ft
450E4769	24" CMP 16 Gauge, Furnish	1,240	Ft
450E4770	24" CMP, Install	1,240	Ft
450E4779	30" CMP 16 Gauge, Furnish	520	Ft
450E4780	30" CMP, Install	520	Ft
450E4789	36" CMP 16 Gauge, Furnish	952	Ft
450E4790	36" CMP, Install	952	Ft
450E5015	24" CMP Elbow, Furnish	24	Each
450E5016	24" CMP Elbow, Install	24	Each
450E5020	30" CMP Elbow, Furnish	8	Each
450E5021	30" CMP Elbow, Install	8	Each
450E5025	36" CMP Elbow, Furnish	15	Each
450E5026	36" CMP Elbow, Install	15	Each

## INDEX OF SHEETS

A2 and A4 Estimate of Quantities for Sections B, C, D, E, F, M, and S  
 A5 to A9 Environmental Commitments

BID ITEM NUMBER	ITEM	QUANTITY	UNIT
450E5215	24" CMP Flared End, Furnish	3	Each
450E5216	24" CMP Flared End, Install	3	Each
450E5223	36" CMP Flared End, Furnish	10	Each
450E5224	36" CMP Flared End, Install	10	Each
450E5306	18" CMP Sloped End, Furnish	11	Each
450E5307	18" CMP Sloped End, Install	11	Each
450E5310	24" CMP Sloped End, Furnish	22	Each
450E5311	24" CMP Sloped End, Install	22	Each
450E5314	30" CMP Sloped End, Furnish	5	Each
450E5315	30" CMP Sloped End, Install	5	Each
450E8014	24" RCP to CMP Transition, Furnish	8	Each
450E8015	24" Pipe Transition, Install	8	Each
450E8019	30" RCP to CMP Transition, Furnish	3	Each
450E8020	30" Pipe Transition, Install	3	Each
450E8024	36" RCP to CMP Transition, Furnish	7	Each
450E8025	36" Pipe Transition, Install	7	Each
462E0100	Class M6 Concrete	25.9	CuYd
464E0100	Controlled Density Fill	216.8	CuYd
480E0100	Reinforcing Steel	4,715	Lb
600E0300	Type III Field Laboratory	1	Each
610E0124	24' Cattle Guard with Wings	1	Each
610E0424	24' Precast Concrete Cattle Guard Foundation	1	Each
620E0010	Type 1 Right-of-Way Fence	1,112	Ft
620E0020	Type 2 Right-of-Way Fence	31,039	Ft
620E0030	Type 3 Right-of-Way Fence	310	Ft
620E0120	Type 2s Right-of-Way Fence	225	Ft
620E0520	Type 2 Temporary Fence	26,271	Ft
620E0610	Type 1s Temporary Fence	225	Ft
620E0620	Type 2s Temporary Fence	215	Ft
620E1020	2 Post Panel	174	Each
620E1030	3 Post Panel	32	Each
620E1120	Install Fence Post	206	Each
620E2014	14' Tubular Gate	1	Each
620E2016	16' Tubular Gate	1	Each
650E0060	Type B66 Concrete Curb and Gutter	352	Ft
650E0360	Type BL66 Concrete Curb and Gutter	158	Ft
650E1060	Type F66 Concrete Curb and Gutter	247	Ft
650E1360	Type FL66 Concrete Curb and Gutter	597	Ft
650E2100	Special Concrete Curb and Gutter	30	Ft
650E6260	6" Concrete Valley Gutter	27.7	SqYd
670E2200	Type C Frame and Grate	1	Each
671E6007	Type A7 Manhole Frame and Lid	2	Each
700E0210	Class B Riprap	521.9	Ton



**Section B – Grading, Continued**

BID ITEM NUMBER	ITEM	QUANTITY	UNIT
700E0410	Class D Riprap	417.0	Ton
720E1015	Bank and Channel Protection Gabion	399.0	CuYd
831E0110	Type B Drainage Fabric	5,220	SqYd
831E0300	Reinforcement Fabric (MSE)	300	SqYd
900E0010	Refurbish Single Mailbox	7	Each
900E0012	Refurbish Double Mailbox	6	Each
900E0015	Multiple Mailbox Support	3	Each
900E1150	Right of Way Marker	324	Each
* 900E2030	Miscellaneous Work	1	Site

\* - Denotes Non-Participating

**Section B - Grading - Alternate A**

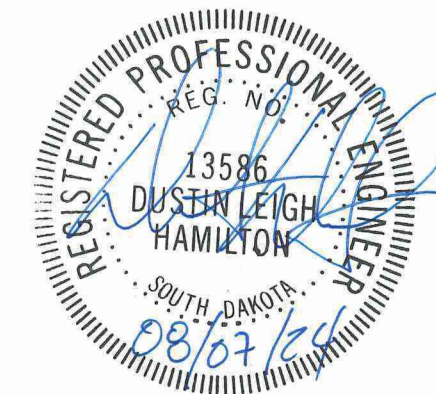
BID ITEM NUMBER	ITEM	QUANTITY	UNIT
120E1100	Unclassified/Rock Excavation	73,877	CuYd
450E0162	30" RCP Class 2, Furnish	32	Ft
450E0164	30" RCP Class 4, Furnish	72	Ft
450E0165	30" RCP Class 5, Furnish	122	Ft
450E0170	30" RCP, Install	226	Ft
450E0192	42" RCP Class 2, Furnish	58	Ft
450E0193	42" RCP Class 3, Furnish	90	Ft
450E0194	42" RCP Class 4, Furnish	128	Ft
450E0195	42" RCP Class 5, Furnish	166	Ft
450E0196	42" RCP Class 4000D, Furnish	92	Ft
450E0198	42" RCP Class 5000D, Furnish	138	Ft
450E0200	42" RCP, Install	672	Ft
450E0213	54" RCP Class 3, Furnish	74	Ft
450E0214	54" RCP Class 4, Furnish	50	Ft
450E0215	54" RCP Class 5, Furnish	68	Ft
450E0218	54" RCP Class 4500D, Furnish	136	Ft
450E0220	54" RCP, Install	328	Ft
450E2024	30" RCP Flared End, Furnish	2	Each
450E2025	30" RCP Flared End, Install	2	Each
450E2032	42" RCP Flared End, Furnish	3	Each
450E2033	42" RCP Flared End, Install	3	Each
450E2040	54" RCP Flared End, Furnish	2	Each
450E2041	54" RCP Flared End, Install	2	Each
450E4799	42" CMP 16 Gauge, Furnish	100	Ft
450E4800	42" CMP, Install	100	Ft
450E5030	42" CMP Elbow, Furnish	2	Each
450E5031	42" CMP Elbow, Install	2	Each
450E5227	42" CMP Flared End, Furnish	1	Each
450E5228	42" CMP Flared End, Install	1	Each
450E8029	42" RCP to CMP Transition, Furnish	1	Each
450E8030	42" Pipe Transition, Install	1	Each

**Section B - Grading - Alternate B**

BID ITEM NUMBER	ITEM	QUANTITY	UNIT
450E0162	30" RCP Class 2, Furnish	32	Ft
450E0164	30" RCP Class 4, Furnish	48	Ft
450E0170	30" RCP, Install	80	Ft
450E0192	42" RCP Class 2, Furnish	58	Ft
450E0193	42" RCP Class 3, Furnish	58	Ft
450E0194	42" RCP Class 4, Furnish	102	Ft
450E0195	42" RCP Class 5, Furnish	56	Ft
450E0200	42" RCP, Install	274	Ft
450E0213	54" RCP Class 3, Furnish	74	Ft
450E0214	54" RCP Class 4, Furnish	54	Ft
450E0215	54" RCP Class 5, Furnish	24	Ft
450E0220	54" RCP, Install	152	Ft
450E2024	30" RCP Flared End, Furnish	1	Each
450E2025	30" RCP Flared End, Install	1	Each
450E2032	42" RCP Flared End, Furnish	3	Each
450E2033	42" RCP Flared End, Install	3	Each
450E2040	54" RCP Flared End, Furnish	2	Each
450E2041	54" RCP Flared End, Install	2	Each
450E4799	42" CMP 16 Gauge, Furnish	156	Ft
450E4800	42" CMP, Install	156	Ft
450E5030	42" CMP Elbow, Furnish	2	Each
450E5031	42" CMP Elbow, Install	2	Each
450E5219	30" CMP Flared End, Furnish	1	Each
450E5220	30" CMP Flared End, Install	1	Each
450E5227	42" CMP Flared End, Furnish	1	Each
450E5228	42" CMP Flared End, Install	1	Each
450E7630	30" Steel Pipe, Furnish	146	Ft
450E7642	42" Steel Pipe, Furnish	346	Ft
450E7654	54" Steel Pipe, Furnish	176	Ft
450E8017	30" Concrete/Steel Pipe Transition, Furnish	1	Each
450E8020	30" Pipe Transition, Install	1	Each
450E8027	42" Concrete/Steel Pipe Transition, Furnish	3	Each
450E8030	42" Pipe Transition, Install	3	Each
450E8037	54" Concrete/Steel Pipe Transition, Furnish	2	Each
450E8040	54" Pipe Transition, Install	2	Each
451E5130	Bore and Jack 30" Pipe	146	Ft
451E5142	Bore and Jack 42" Pipe	346	Ft
451E5154	Bore and Jack 54" Pipe	176	Ft

**Section C - Traffic Control**

BID ITEM NUMBER	ITEM	QUANTITY	UNIT
110E7150	Remove Sign for Reset	1	Each
120E6000	Water for Dust Control	5,000.0	MGal
205E0010	Dust Control Chloride	107,230	Lb
260E3500	Temporary Gravel Surfacing	9,350.0	Ton
632E2510	Type 2 Object Marker Back to Back	4	Each
632E3500	Reset Sign	1	Each
634E0010	Flagging	20,000.0	Hour
634E0020	Pilot Car	6,000.0	Hour
634E0110	Traffic Control Signs	2,279.2	SqFt
634E0120	Traffic Control, Miscellaneous	Lump Sum	LS
634E0275	Type 3 Barricade	42	Each
634E0525	Linear Delineation System Panel, Barrier Mounted	326	Each
634E0560	Remove Pavement Marking, 4" or Equivalent	1,500	Ft
634E0700	Traffic Control Movable Concrete Barrier	326	Each
634E0705	Remove and Reset Traffic Control Movable Concrete Barrier	86	Each
634E0750	Temporary Concrete Barrier End Protection	8	Each
634E0755	Remove and Reset Temporary Concrete Barrier End Protection	4	Each
634E0760	Temporary Concrete Barrier End Protection Module Set or Repair Kit	2	Each
634E1002	Detour and Restriction Signing	2,316.2	SqFt
634E1215	Contractor Furnished Portable Changeable Message Sign	3	Each
634E2025	Longitudinal Pedestrian Barrier	240	Ft



### Section D - Erosion and Sediment Control

### Section E - Structure Structure No. 52-279-329

### Section S - Permanent Signing

BID ITEM NUMBER	ITEM	QUANTITY	UNIT
110E1690	Remove Sediment	111.3	CuYd
110E1695	Remove Sediment Filter Bag	32	Ft
110E1700	Remove Silt Fence	4,831	Ft
230E0010	Placing Topsoil	37,222	CuYd
730E0100	Cover Crop Seeding	150.0	Bu
730E0251	Special Permanent Seed Mixture 1	1,727	Lb
731E0200	Fertilizing	43.17	Ton
732E0100	Mulching	7.0	Ton
732E0200	Fiber Mulching	130.0	Ton
732E0500	Fiber Reinforced Matrix	82.9	Ton
734E0044	Soil Stabilizer	62.9	Acre
734E0103	Type 3 Erosion Control Blanket	18,698	SqYd
734E0104	Type 4 Erosion Control Blanket	3,287	SqYd
734E0132	Type 2 Turf Reinforcement Mat	1,641.0	SqYd
734E0154	12" Diameter Erosion Control Wattle	48,245	Ft
734E0165	Remove and Reset Erosion Control Wattle	12,061	Ft
734E0170	Temporary Sediment Barrier	4,500	Ft
734E0180	Sediment Filter Bag	32	Ft
734E0325	Surface Roughening	57.1	Acre
734E0510	Shaping for Erosion Control Blanket	13,937	Ft
734E0602	Low Flow Silt Fence	5,385	Ft
734E0604	High Flow Silt Fence	4,876	Ft
734E0610	Mucking Silt Fence	1,341	CuYd
734E0620	Repair Silt Fence	4,831	Ft
734E0845	Sediment Control at Inlet with Frame and Grate	2	Each
900E1310	Concrete Washout Facility	1	Each
900E1320	Construction Entrance	3	Each

BID ITEM NUMBER	ITEM	QUANTITY	UNIT
420E0200	Structure Excavation, Box Culvert	263	CuYd
421E0200	Box Culvert Undercut	317	CuYd
460E0120	Class A45 Concrete, Box Culvert	779.5	CuYd
480E0100	Reinforcing Steel	124,868	Lb
700E0210	Class B Riprap	572.5	Ton
734E1200	Natural Streambed Material	648.2	Ton
831E0110	Type B Drainage Fabric	775	SqYd

BID ITEM NUMBER	ITEM	QUANTITY	UNIT
110E0130	Remove Traffic Sign	16	Each
110E0135	Remove Delineator	238	Each
110E7150	Remove Sign for Reset	107	Each
632E1320	2.0"x2.0" Perforated Tube Post	278.0	Ft
632E1330	2.25"x2.25" Perforated Tube Post	120.0	Ft
632E2022	4"x4" White Delineator Back to Back with 1.12 Lb/Ft Post	231	Each
632E2207	4" Tubular White Delineator Reflector	7	Each
632E3203	Flat Aluminum Sign, Nonremovable Copy High Intensity	263.5	SqFt
632E3205	Flat Aluminum Sign, Nonremovable Copy Super/Very High Intensity	128.8	SqFt
632E3500	Reset Sign	107	Each

### Section F - Surfacing

BID ITEM NUMBER	ITEM	QUANTITY	UNIT
009E3320	Checker	Lump Sum	LS
120E6200	Water for Granular Material	1,917.1	MGal
260E1010	Base Course	51,011.4	Ton
260E1030	Base Course, Salvaged	108,754.0	Ton
* 270E0230	Haul and Stockpile Asphalt Mix Material	11,000.0	Ton
320E1200	Asphalt Concrete Composite	1,313.6	Ton
330E0010	MC-70 Asphalt for Prime	270.2	Ton
330E0300	SS-1h or CSS-1h Asphalt for Fog Seal	28.7	Ton
330E1000	Blotting Sand for Prime	585.0	Ton
330E3000	Sand for Fog Seal	10.0	Ton
332E0010	Cold Milling Asphalt Concrete	139,683	SqYd
360E0020	AE150S Asphalt for Surface Treatment	199.2	Ton
360E1050	Type 3 Cover Aggregate	2,684.9	Ton

\* - Denotes Non-Participating

### SPECIFICATIONS

Standard Specifications for Roads and Bridges, 2015 Edition and Required Provisions, Supplemental Specifications, and Special Provisions as included in the Proposal.

### Section E - Structure Structure No. 52-282-363

### Section M - Pavement Marking

BID ITEM NUMBER	ITEM	QUANTITY	UNIT
250E0030	Incidental Work, Structure	Lump Sum	LS
420E0200	Structure Excavation, Box Culvert	408	CuYd
421E0200	Box Culvert Undercut	321	CuYd
460E0120	Class A45 Concrete, Box Culvert	967.2	CuYd
480E0100	Reinforcing Steel	107,104	Lb
700E0210	Class B Riprap	155.6	Ton
734E1200	Natural Streambed Material	1,025.6	Ton
831E0110	Type B Drainage Fabric	168	SqYd

BID ITEM NUMBER	ITEM	QUANTITY	UNIT
633E1220	High Build Waterborne Pavement Marking Paint, 4" White	88,380	Ft
633E1222	High Build Waterborne Pavement Marking Paint, 4" Yellow	55,858	Ft
633E1260	High Build Waterborne Pavement Marking Paint, 24" White	42	Ft
633E1262	High Build Waterborne Pavement Marking Paint, 24" Yellow	520	Ft
633E1270	High Build Waterborne Pavement Marking Paint, Area	107	SqFt
633E1272	High Build Waterborne Pavement Marking Paint, Arrow	12	Each



**ENVIRONMENTAL COMMITMENTS**

The SDDOT is committed to protecting the environment and uses Environmental Commitments as a communication tool for the Engineer and Contractor to ensure that attention is given to avoid, minimize, and/or mitigate an environmental impact. Environmental commitments to various agencies and the public have been made to secure approval of this project. An agency with permitting authority can delay a project if identified environmental impacts have not been adequately addressed. Unless otherwise designated, the Contractor's primary contact regarding matters associated with these commitments will be the Project Engineer. During construction, the Project Engineer will verify that the Contractor has met Environmental Commitment requirements. These environmental commitments are not subject to change without prior written approval from the SDDOT Environmental Office.

Additional guidance on SDDOT's Environmental Commitments can be accessed through the Environmental Procedures Manual found at: <https://dot.sd.gov/media/documents/EnvironmentalProceduresManual.pdf>

For questions regarding change orders in the field that may have an effect on an Environmental Commitment, the Project Engineer will contact the Environmental Engineer at 605-773-3180 or 605-773-4336 to determine whether an environmental analysis and/or resource agency coordination is necessary.

Once construction is complete, the Project Engineer will review all environmental commitments for the project and document their completion.

**COMMITMENT A: WETLANDS**

All efforts to avoid and minimize wetland impacts from the project have resulted in approximately 0.705 acre of wetlands (permanently) becoming impacted. Refer to Section B – Grading plans/plan sheets for location and boundaries of the impacted wetlands.

Fen wetlands (Wetlands 7d and 7f) have been identified adjacent to and within the project rights-of-way but outside of the working limits. None of these wetlands are being impacted. Grading plans note "Do Not Disturb, Sensitive Wetland Area". Refer to Table of Avoidance to ensure these areas are completely avoided.

The Contractor will be present during earth disturbing activities to monitor disturbance near fen wetland areas and to ensure full avoidance of fens. There are 1.54 acres of fens adjacent to the project.

**Table of Avoidance**

Fen Wetland No.	Stationing Location	Latitude At Center	Longitude At Center	Temp. Impact (Acres)	Area (acres)
7d	302+25-302+50 L	44.009458	103.489379	0.328	0.774
7f	289+00-294+50L	44.007215	103.489875	0.144	0.767

**Table of Impacted Wetlands**

Wetland No.	Station	Perm. Impact Left (Acres)	Perm. Impact Right (Acres)	Temp. Impact Left (Acres)	Temp. Impact Right (Acres)	Total Impact (Acres)
4a-b	383+50	0.011	0.031	0.00	0.00	0.042
5a-b	372+25	0.0220	0.033	0.00	0.018	0.135
6a-d	359+00	0.105	0.073	0.054	0.022	0.254
7a-b	327+00	0.278	0.00	0.00	0.00	0.278
8a	242+00	0.00	0.00	0.093	0.00	0.093
8b	240+00	0.083	0.00	0.114	0.00	0.197
9	208+00	0.00	0.00	0.00	0.069	0.069
10	206+00	0.00	0.023	0.00	0.025	0.048
12	207+00	0.046	0.00	0.05	0.00	0.051

**Table of Impacted Streams**

Stream No.	Station	Perm. Impact (Acres)	Temporary Impact (Acres)	Total Impact (Acres)
I-07a-b, e-f	322+50	0.261	0.159	0.42
I-08c	234+00	0.115	0.013	0.128
I-09a-b	165+00	0.028	0.038	0.066
P-03a-c	414+75	0.084	0.013	0.097
P-05a-b	358+00	0.016	0.010	0.026
P-07c-d	277+00	0.056	0.103	0.159
P-08d-i	230+00	0.084	0.355	0.439

**Action Taken/Required:**

For wetland and stream impacts less than 0.10 acre per aquatic resource, mitigation is required in accordance with the "Statewide Finding Regarding Wetlands for South Dakota Federal-Aid Highway Projects (February 2018)". Replacement of 0.346 acre of permanent wetland impacts will be mitigated on and off site. On-site mitigation is shown in the plans. Refer to Section B – Grading Plans.

Temporary impacts identified in the Table of Impacted Wetlands will not be mitigated as original contours and elevations will be re-established as designated in Section B- Grading Plans. Prior to initiating temporary work in wetlands, the Contractor will submit a plan to the Project Engineer in accordance with Section 7.21 D of the Specifications.

The Contractor will notify the Project Engineer if additional easement is needed to complete work adjacent to any wetland. The Project Engineer will obtain an appropriate course of action from the Environmental Office before proceeding with construction activities that affect any wetlands beyond the work limits and easements shown in the plans.

For wetland and stream impacts greater than 0.1 acre per aquatic resource, a total of 0.359 acre of compensatory mitigation will be developed on- and off-site. Off-site mitigation is not included in these plans but will be constructed under a different project. Prior to construction, SDDOT will provide a mitigation plan to the USACE for approval of the mitigation sites. The location and

boundaries of the on-site mitigation sites are shown in the plans. Refer to Section B – Grading Plans.

Wetland Mitigation Site No.	Location	Latitude At Center	Longitude At Center	Mitigation (Acres)
3	Sec 26 & 35-T1N-R5E	44.008542	-103.489436	2.05 ac
4	Sec 26-T1N-R5E	44.015263	-103.488964	0.5 ac

**Wetland Topsoil**

Wetland topsoil will be stripped from all wetland areas which will be impacted by the project. The wetland topsoil will be stripped to a depth that sufficiently allows 6 inches of the wetland topsoil to be re-utilized as the upper stratum of wetland mitigation site(s).

The wetland topsoil will be stockpiled separately from other topsoil in a location approved by the Project Engineer. Locate wetland stockpile a minimum of 50 feet away from concentrated flows of storm water, waterways, drainage courses, and inlets. All wetland topsoil that is stripped will be spread on the mitigation site(s) so that it is evenly distributed to a minimum depth of 6 inches. Surplus wetland topsoil will be used to flatten embankment slopes or placed in other locations as approved by the Project Engineer.

All costs to remove and stockpile the wetland topsoil will be paid for at the contract unit price per cubic yard for "Unclassified Excavation". All costs to place the wetland topsoil will be incidental to the contract unit price per cubic yard for "Placing Topsoil".

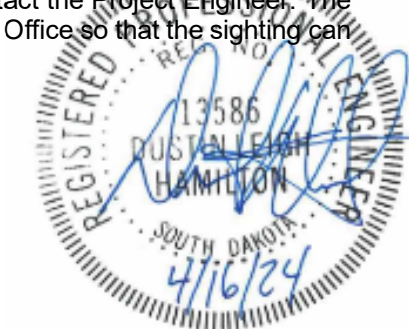
**COMMITMENT B: FEDERALLY THREATENED, ENDANGERED, AND PROTECTED SPECIES**

**COMMITMENT B2: WHOOPING CRANE**

The Whooping Crane is a spring and fall migratory bird in South Dakota that is about 5 feet tall and typically stops on wetlands, rivers, and agricultural lands along their migration route. An adult Whooping Crane is white with a red crown and a long, dark, pointed bill. Immature Whooping Cranes are cinnamon brown. While in flight, their long necks are kept straight and their long dark legs trail behind. Adult Whooping Cranes' black wing tips are visible during flight.

**Action Taken/Required:**

Harassment or other measures to cause the Whooping Crane to leave the site is a violation of the Endangered Species Act. If a Whooping Crane is sighted roosting in the vicinity of the project, borrow pits, or staging areas associated with the project, cease construction activities in the affected area until the Whooping Crane departs and immediately contact the Project Engineer. The Project Engineer will contact the Environmental Office so that the sighting can be reported to USFWS.



**COMMITMENT B4: BALD EAGLE**

Bald eagles are known to occur in this area.

**Action Taken/Required:**

If a nest is observed within one mile of the project site, notify the Project Engineer immediately so that he/she can consult with the Environmental Office for an appropriate course of action.

**COMMITMENT B5: NORTHERN LONG-EARED BAT**

This project is within the range of suitable habitat for the Northern Long-Eared Bat (NLEB) and project work will avoid conflicts with NLEB roosting habitat.

**Action Taken/Required:**

Project activities that include tree removal, structure work, and/or work within one-quarter mile of a known hibernacula or 150 feet of a known maternity roost tree, or suitable habitat should not occur within the location(s) listed below during the NLEB seasonal work restriction timeframe without approval from the SDDOT Environmental Office.

Station	NLEB Seasonal Work Restriction
100+00-538+50	April 1 to October 31

Tree removal will occur between November 1<sup>st</sup> and March 31<sup>st</sup>.

The following avoidance, minimization, and mitigation measures are required:

**GENERAL AMM 1**

Ensure all operators, employees, and contractors working in areas of known or presumed bat habitat are aware of all Transportation Agency environmental commitments, including all applicable AMMs.

**TREE REMOVAL AMM 1**

Modify all phases/aspects of the project (e.g. temporary work areas) to avoid tree removal.

**TREE REMOVAL AMM 3**

Contractor to ensure tree removal is limited to that specified in project plans. Additional tree removal will need to be coordinated with SDDOT prior to removal.

**COMMITMENT C: WATER SOURCE**

The Contractor will not withdraw water with equipment previously used outside the State of South Dakota or previously used in aquatic invasive species (AIS) positive waters within South Dakota without prior approval from the SDDOT Environmental Office. To prevent and control the introduction and spread of invasive species into the project vicinity, all equipment shall be power washed with hot water (≥140 °F) and completely dried for a minimum of 7 days prior to subsequent use. South Dakota administrative rule 41:10:04:02 forbids the possession and transport of AIS; therefore, all attached dirt, mud, debris and vegetation must be removed and all compartments and tanks capable of holding standing water must be drained. This includes, but is not limited to, all equipment, pumps, lines, hoses and holding tanks.

**Action Taken/Required:**

The Contractor will obtain the necessary permits from the regulatory agencies such as the South Dakota Department of Agriculture and Natural Resources (DANR) and the United States Army Corps of Engineers (USACE) prior to water extraction activities.

Additional information and mapping of water sources impacted by Aquatic Invasive Species in South Dakota can be accessed at:  
< <http://sdleastwanted.com/maps/default.aspx> >

< [South Dakota Administrative Rule 41:10:04 Aquatic Invasive Species: https://sdlegislature.gov/rules/DisplayRule.aspx?Rule=41:10:04](https://sdlegislature.gov/rules/DisplayRule.aspx?Rule=41:10:04) >

**COMMITMENT D: WATER QUALITY STANDARDS**

**COMMITMENT D1: SURFACE WATER QUALITY**

Horse Creek is classified as a cold water marginal/warm water permanent/warm water semi-permanent fishery with a total suspended solids standard of less than 90 mg/L 30-day average, less than 158 mg/L daily maximum.

Prairie Creek and Spring Creek are classified as a cold water permanent fisheries with a total suspended solids standard of less than 30 mg/L 30-day average, less than 53 mg/L daily maximum.

Sheridan Lake is classified as a cold water permanent fish life propagation and immersion water with a total suspended solids standard of 30mg/L that should not be violated.

Horse Creek, Prairie Creek, Spring Creek, and Sheridan Lake are classified as fish and wildlife propagation, recreation, irrigation, and stock watering waters. Because of these beneficial uses, special construction measures may have to be taken to ensure that this water body is not impacted.

This project may be in the vicinity of multiple streams and wetlands. These waters are considered waters of the state and are protected under Administrative Rules of South Dakota (ARSD) Chapter 74:51. Special construction measures may have to be taken to ensure that this water body is not impacted.

**Action Taken/Required:**

The Contractor is advised that the South Dakota Surface Water Quality Standards, administered by the South Dakota Department of Agriculture and Natural Resources (DANR), apply to this project. Special construction measures will be taken to ensure the above standard(s) of the surface waters are maintained and protected.

**COMMITMENT D2: SURFACE WATER DISCHARGE**

The DANR General Permit for Temporary Discharge is required for temporary dewatering and discharges to waters of the state. The effluent limit for total suspended solids will be 90 mg/L 30-day average. The effluent limit applies to discharges to all waters of the state except discharges to waters classified as cold water permanent fish life propagation waters according to the ARSD 74:51:01:45. For discharges to waters of the state classified as cold water

permanent fish life propagation waters, the effluent limit for total suspended solids will be 53 mg/L daily maximum.

The permittee has the option of completing effluent testing or implementing a pollution prevention plan for compliance with this permit. If the permittee develops a pollution prevention plan instead of total suspended solids sampling, the plan must be developed and implemented prior to discontinuing total suspended solids sampling. Refer to Section 4.0 of the permit. If any pollutants are suspected of being discharged, a sample must be taken for those parameters listed in Section 3.4 of the permit.

Refer to Commitment D1: Surface Water Quality for stream classification.

**Action Taken/Required:**

If construction dewatering is required and this project is currently covered under a General Permit for Stormwater Discharges Associated with Construction Activities, the Contractor will need to submit the dewatering information to the SDDANR using the following form:

< [https://danr.sd.gov/OfficeOfWater/SurfaceWaterQuality/docs/DANR\\_AddTempInfoFillable.pdf](https://danr.sd.gov/OfficeOfWater/SurfaceWaterQuality/docs/DANR_AddTempInfoFillable.pdf) >

The Contractor will provide a copy of the approved permit or the submitted dewatering information to the Project Engineer prior to proceeding with any dewatering activities. The approved permit or submitted dewatering information must be kept on-site and as part of the project records.

Effluent monitoring, as a result of dewatering activities, will be summarized for each month and recorded on a separate Discharge Monitoring Report (DMR) and submitted to DANR monthly. Additional information can be found at:

< <https://danr.sd.gov/Conservation/WatershedProtection/TMDL/default.aspx> >



**COMMITMENT E: STORM WATER**

Construction activities constitute 1 acre or more of earth disturbance and/or work in a waterway.

**Action Taken/Required:**

At a minimum and regardless of project size, appropriate erosion and sediment control measures must be installed to control the discharge of pollutants from the construction site.

Construction activities constitute 1 acre or more of earth disturbance and/or work in a waterway.

**Action Taken/Required:**

The DANR General Permit for Stormwater Discharges Associated with Construction Activities is required for construction activity disturbing one or more acres of earth and work in a waterway. The SDDOT is the owner of this permit and will submit the NOI to DANR 15 days prior to project start in order to obtain coverage under the General Permit. Work can begin once the DANR letter of approval is received.

The Contractor must adhere to the "Special Provision Regarding Storm Water Discharges to Waters of the State."

The Contractor will complete the DANR Contractor Certification Form prior to the pre-construction meeting. The form certifies under penalty of law that the Contractor understands and will comply with the terms and conditions of the permit for this project. Work may not begin on this project until this form is signed and submitted to DANR.

The form can be found at:  
<[https://danr.sd.gov/OfficeOfWater/SurfaceWaterQuality/docs/DANR\\_CGPA\\_ppendixCCA2018Fillable.pdf](https://danr.sd.gov/OfficeOfWater/SurfaceWaterQuality/docs/DANR_CGPA_ppendixCCA2018Fillable.pdf)>

The Contractor is advised that permit coverage may also be required for off-site activities, such as borrow and staging areas, which are the responsibility of the Contractor.

**Storm Water Pollution Prevention Plan**

The Storm Water Pollution Prevention Plan (SWPPP) will be developed prior to the submittal of the NOI and will be implemented for all construction activities for compliance with the permit. The SWPPP must be kept on-site and updated as site conditions change. Erosion control measures and best management practices will be implemented in accordance with the SWPPP.

The DOT 298 Form will be used for site inspections and to document changes to the SWPPP. A copy of the completed inspection form will be filed with the SWPPP documents and retained for a minimum of three years.

The inspection will include disturbed areas of the construction site that have not been finally stabilized, areas used for storage materials, structural control measures, and locations where vehicles enter or exit the site. These areas will be inspected for evidence of, or the potential for, pollutants entering the drainage system. Erosion and sediment control measures identified in the SWPPP will be observed to ensure that they are operating correctly, and sediment is not tracked off the site.

Information on storm water permits and SWPPPs are available on the following websites:

SDDOT: < <https://dot.sd.gov/doing-business/environmental/stormwater> >

DANR:  
<<https://danr.sd.gov/OfficeOfWater/SurfaceWaterQuality/stormwater/default.aspx>>

EPA: < <https://www.epa.gov/npdes> >

**COMMITMENT H: WASTE DISPOSAL SITE**

The Contractor will furnish a site(s) for the disposal of construction and/or demolition debris generated by this project.

**Action Taken/Required:**

Construction and/or demolition debris may not be disposed of within the Public ROW.

The waste disposal site(s) will be managed and reclaimed in accordance with the following from the General Permit for Construction/Demolition Debris Disposal Under the South Dakota Waste Management Program issued by the Department of Environment and Natural Resources.

The waste disposal site(s) will not be located in a wetland, within 200 feet of surface water, or in an area that adversely affects wildlife, recreation, aesthetic value of an area, or any threatened or endangered species, as approved by the Environmental Office and the Project Engineer.

If the waste disposal site(s) is located such that it is within view of any ROW, the following additional requirements will apply:

1. Construction and/or demolition debris consisting of concrete, asphalt concrete, or other similar materials will be buried in a trench separate from wood debris. The final cover over the construction and/or demolition debris will consist of a minimum of 1 foot of soil capable of supporting vegetation. Waste disposal sites provided outside of the Public ROW will be seeded in accordance with Natural Resources Conservation Service recommendations. The seeding recommendations may be obtained through the appropriate County NRCS Office. The Contractor will control the access to waste disposal sites not within the Public ROW with fences, gates, and placement of a sign or signs at the entrance to the site stating, "No Dumping Allowed".

2. Concrete and asphalt concrete debris may be stockpiled within view of the ROW for a period not to exceed the duration of the project. Prior to project completion, the waste shall be removed from view of the ROW or buried, and the waste disposal site reclaimed as noted above.

The above requirements will not apply to waste disposal sites that are covered by an individual solid waste permit as specified in SDCL 34A-6-58, SDCL 34A-6-1.13, and ARSD 74:27:10:06.

Failure to comply with the requirements stated above may result in civil penalties in accordance with South Dakota Solid Waste Law, SDCL 34A-6-1.31.

All costs associated with furnishing waste disposal site(s), disposing of waste, maintaining control of access (fence, gates, and signs), and reclamation of the waste disposal site(s) will be incidental to the various contract items.



**COMMITMENT I: HISTORIC PRESERVATION OFFICE CLEARANCES**

The SDDOT has obtained concurrence with the State Historic Preservation Office (SHPO) for all work included within the project limits and all department designated sources and designated option material sources, stockpile sites, storage areas, and waste sites provided within the plans.

**Action Taken/Required:**

All earth disturbing activities not designated within the plans require a cultural resource review prior to scheduling the pre-construction meeting. This work includes but is not limited to: Contractor furnished material sources, material processing sites, stockpile sites, storage areas, plant sites, and waste areas.

The Contractor will arrange and pay for a record search and when necessary, a cultural resource survey. The Contractor has the option to contact the state Archaeological Research Center (ARC) at 605-394-1936 or another qualified archaeologist, to obtain either a records search or a cultural resources survey. A record search might be sufficient for review if the site was previously surveyed; however, a cultural resources survey may need to be conducted by a qualified archaeologist.

The Contractor will provide ARC with the following: a topographical map or aerial view in which the site is clearly outlined, site dimensions, project number, and PCN. If applicable, provide evidence that the site has been previously disturbed by farming, mining, or construction activities with a landowner statement that artifacts have not been found on the site.

The Contractor will submit the cultural resources survey report to SDDOT Environmental Office, 700 East Broadway Avenue, Pierre, SD 57501-2586. SDDOT will submit the information to the appropriate SHPO/THPO. Allow **30 Days** from the date this information is submitted to the Environmental Engineer for SHPO/THPO review.

In the event of an inadvertent discovery of human remains, funerary objects, or if evidence of cultural resources is identified during project construction activities, then such activities within 100 feet of the inadvertent discovery will immediately cease and the Project Engineer will be immediately notified. The Project Engineer will contact the SDDOT Environmental Office, who will contact the appropriate SHPO/THPO within 48 hours of the discovery to determine an appropriate course of action.

**SHPO review does not relieve the Contractor of the responsibility for obtaining any additional permits and clearances for Contractor furnished material sources, material processing sites, stockpile sites, storage areas, plant sites, and waste areas that affect wetlands, threatened and endangered species, or waterways. The Contractor will not utilize a site known or suspected of having contaminated soil or water. The Contractor will provide the required permits and clearances to the Project Engineer at the preconstruction meeting.**

**COMMITMENT J: CONSTRUCTION PRACTICES FOR TEMPORARY WORKS IN WATERWAYS OF THE U.S.**

The Contractor is advised that special construction measures must be taken to ensure that the waterways of the U.S. are not impacted.

**Action Taken/Required:**

Excavation will not occur below the ordinary high-water elevation in waterways outside of caissons, cribs, cofferdams, steel piling, or sheeting. The natural streambed will not be disturbed unless specified by the plans and under the observation of the Project Engineer. Refer to the Table of U.S. Waterways to Protect for ordinary high-water elevations. Any structure work over or within the waterway shall be constructed according to Section 7.21 C of the Specifications.

All dredged or excavated materials will be placed at a site above the ordinary high-water elevation in a confined area (not classified as a wetland) that is a minimum of 50 feet away from concentrated flows of storm water, drainage courses, and inlets to prevent return of such material to the waterway.

The construction of temporary work platforms, crossings, or berms below the ordinary high-water elevation will be allowed if all material placed below the ordinary high-water elevation consists of Class B or larger riprap.

All temporary caissons, cribs, cofferdams, steel piling, sheeting, work platforms, crossings, and berms will be removed with minimal disturbance to the streambed. Proper construction practices will be used to minimize increases in suspended solids and turbidity in the waterway.

Bridge berms, wing dams, traffic diversions, channel reconstruction, stream diversions, grading, etc. will be constructed in close conformity with the plans to ensure that the hydraulic capacity of the waterway is not changed.

Temporary waterway crossings required for the Contractor's construction operations will be constructed with an adequate drainage structure size and minimum fill height to reduce the potential for upstream flooding. The Contractor will be responsible for sizing the temporary drainage structure for these crossings.

All temporary works in waterways of the US are required to be covered in the Corp of Engineers 404 Permit. At the time of the preconstruction meeting, the Contractor shall submit documentation for all temporary works for the purpose of complying with the 404 Permit requirements in accordance with Section 423.3 A of the Specifications.

If an on-site construction crossing is used at Sta. 216+59 L to 217+31 L, the temporary crossing will need to be designed so it will not increase the Q<sub>100</sub> water surface elevation. The Contractor will submit the proposed temporary crossing geometric layout and structure size at Sta. 216+59 L to 217+31 L to the Project Engineer during the preconstruction meeting. This information will be forwarded to the SDDOT Hydraulics Office and Environmental Office for review. Construction of the temporary crossing is not allowed until approval of the proposal is obtained from the SDDOT Hydraulics office and Environmental Office.

**Table of U.S. Waterways to Protect**

Station	Waterway	Ordinary High-Water Elevation
216+69.5 to 217+27.3 L	Horse Creek	4726.1'
415+00 to 419+00	Prairie Creek	4975.0'
121+00-125+00 R	Spring Creek	4637.5'
105+25-135+00 R	Sheridan Lake	4633.2'

Stream channel excavation within "Waters of the US" is subject to USACE regulatory jurisdiction. Stream channel excavation cannot exceed the permitted quantities and/or surface area. The 404 Permit is included in the Special Provisions.

The Contractor will take all precautions necessary to prevent any incidental discharges associated with the excavation and hauling of material from the stream channel. This pertains to any excavation operations such as, foundation, pier, or abutment excavation, channel cleanout, excavation for riprap protection, and removal of any temporary fill associated with construction activities.





**COMMITMENT M: SECTION 4(f)/6(f) RESOURCES**

**COMMITMENT M1: SECTION 4(f) PROPERTY**

A Section 4(f) Evaluation concluded there are no feasible and prudent alternatives to avoiding Section 4(f) property located within the project.

Station	Section 4(f) Property
120+00-125+00	Sheridan Lake Fisherman's Parking Lot
180+80-184+50	ESS-1 (railroad bed)
201+35	ESS-2 (Horse Creek Resort)

**Action Taken/Required:**

The following measures are required to minimize harm to the above Section 4(f) property:

- Access will be maintained to the remainder of the Sheridan Lake Recreation Area via Calumet Road or Sheridan Lake Road throughout construction.
- Appropriate signage will be installed along US385 and Sheridan Lake Road to alert users of Fisherman's Parking Lot construction activities and any access restrictions and to direct users to secondary access points to Sheridan Lake Recreation Area. Additionally, notices will be posted on the USFS website and social media outlets and a combined news release between USFS and SDDOT be made available to inform the public.
- Closures of the trail will be shorter than the duration of Project construction.
- The staging and/or storage of construction equipment or materials shall not take place outside proposed construction limits that are within the defined boundaries of the 4(f) property.
- The Contractor shall be required to coordinate the construction schedule with SDDOT and USFS prior to the start of construction activities that include Fisherman's Parking Lot.
- All disturbed areas will be fully restored after construction is complete.
- ESS-1 & ESS-2 must be completely avoided.

The Contractor will notify the Project Engineer if additional easement is needed to complete the work adjacent to any Section 4(f) property. The Project Engineer will obtain an appropriate course of action from the Environmental Office before proceeding with construction activities that affect any Section 4(f) property.

**COMMITMENT N: SECTION 404 PERMIT**

The SDDOT has obtained a Section 404 Permit from the USACE for the permanent actions associated with this project.

**Action Taken/Required:**

The Contractor will comply with all requirements contained in the Section 404 Permit.

The Contractor will also be responsible for obtaining a Section 404 Permit for any dredge, excavation, or fill activities associated with material sources, storage areas, waste sites, and Contractor work sites outside the plan work limits that affect wetlands, floodplains, or waters of the United States.

**COMMITMENT Q: ARCHAEOLOGICAL COORDINATION**

As a result of a Cultural Resources Survey, historically and/or archaeologically sensitive areas have been identified within and/or adjacent to the project rights-of-way.

The following historically and/or archaeologically sensitive sites have been identified that require avoidance of construction activities:

**Table of Historic/Archaeological Sites**

Station	Offset (Ft.)	L/R	Environmental Sensitive Site	Action
180+80-184+50	69-120 ft	R	ESS-1 (railroad bed)	Do Not Disturb
201+35	213 ft	R	ESS-2 (Horse Creek Resort)	Do Not Disturb

The locations and boundaries of the site(s) for avoidance are shown in Section B-Grading plans/the plans.

**Action Taken/Required:**

If evidence for cultural resources is uncovered during project construction activities, then such activities within 100 feet of the inadvertent discovery will immediately cease and the Project Engineer will be immediately notified. The Project Engineer will contact the SDDOT Environmental Office, who will consult with the Archaeological Research Center (ARC), the THPO of the consulted tribes, SHPO, and FHWA, to determine the appropriate course of action.

All artifacts, features, or other items of interest uncovered by project construction activities will not be displaced unless the landowner and the SHPO consent to it.

**COMMITMENT S: FIRE PREVENTION IN THE BLACK HILLS AREA**

This project is located within the Black Hills Forest Fire Protection Boundary.

**Action Taken/Required:**

The Contractor shall adhere to the "Special Provision for Fire Plan".

**COMMITMENT T: ADDITIONAL MITIGATION REQUIREMENTS**

In addition to the wetland mitigation sites outlined in Commitment A: Wetlands, an additional mitigation site will be constructed as part of a different project, PCN 03BD, and will be required to fully offset impacts to wetlands on PCN 03VD. Prior to construction, SDDOT will provide a mitigation plan to the USACE for approval of the mitigation sites.

**Action Taken/Required:**

A portion of this project's mitigation requirements will be accomplished with a separate project, PCN 03BD. During the pre-construction meeting, Contractor to verify that mitigation requirements have been met for Sites 3 and 4.

