

SECTION M: PAVEMENT MARKING LAYOUTS

STATE OF SOUTH DAKOTA	PROJECT	SHEET	TOTAL SHEETS
	NH-PH-B 0385(51)87	M1	M11

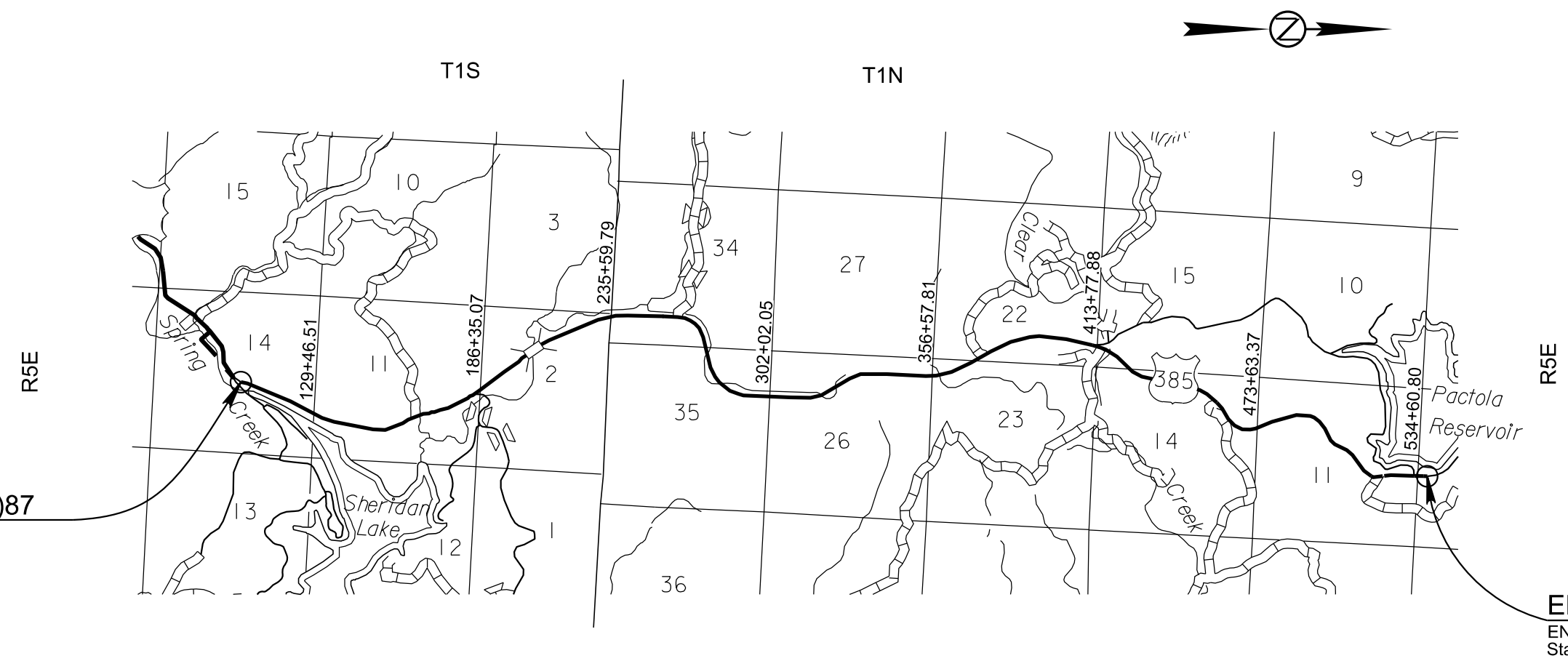
Plotting Date: 4/16/2024

INDEX OF SHEETS

- M1 General Layout with Index
- M2 Estimate with General Notes & Tables
- M3-M10 Pavement Marking Layouts
- M11 Standard Plates

Plot Scale - 1:200

Plotted From - KHEDMAN



BEGIN NH-PH-B 0385(51)87
 BEGIN GRADING
 Station 106+72.48

END NH-PH-B 0385(51)87
 END GRADING
 Station 535+68.17



SECTION M ESTIMATE OF QUANTITIES

BID ITEM NUMBER	ITEM	QUANTITY	UNIT
633E1220	High Build Waterborne Pavement Marking Paint, 4" White	88,380	Ft
633E1222	High Build Waterborne Pavement Marking Paint, 4" Yellow	55,858	Ft
633E1260	High Build Waterborne Pavement Marking Paint, 24" White	42	Ft
633E1262	High Build Waterborne Pavement Marking Paint, 24" Yellow	520	Ft
633E1270	High Build Waterborne Pavement Marking Paint, Area	107	SqFt
633E1272	High Build Waterborne Pavement Marking Paint, Arrow	12	Each

PAVEMENT MARKING PAINT

All No Passing Zones will be reviewed prior to the application of any new centerline markings. The Contractor will advise the Engineer a minimum of 3 weeks prior to the application of permanent pavement markings to allow the State to mark the locations of No Pass Zones. State forces will not be available to mark the No Pass Zones for the last week of July and the first two weeks of August.

The application of permanent pavement marking will begin no sooner than 7 calendar days following completion of the fog or flush seal. Application of permanent pavement marking will be completed within 14 calendar days following completion of the final surfacing.

HIGH BUILD WATERBORNE PAVEMENT MARKING PAINT

All materials will be applied as per manufacturer's recommendations. High build waterborne pavement marking paint will conform to the supplemental specifications for Section 980.1 B.

Reflective media will consist of glass beads. Reflective media will require a Certificate of Compliance for Certification for each source and lot. Acceptance sampling will not be required.

RATES OF MATERIALS FOR HIGH BUILD WATERBORNE PAVEMENT MARKING PAINT

Solid 4" line = 27.8 Gals/Mile
 Dashed 4" line = 7.6 Gal/Mile
 Glass Beads = 5.3 Lbs/Gal.

All cost for materials, labor and equipment necessary to furnish and install the pavement markings will be incidental to the contract unit price for the respective High Build Waterborne Pavement Marking Paint items.

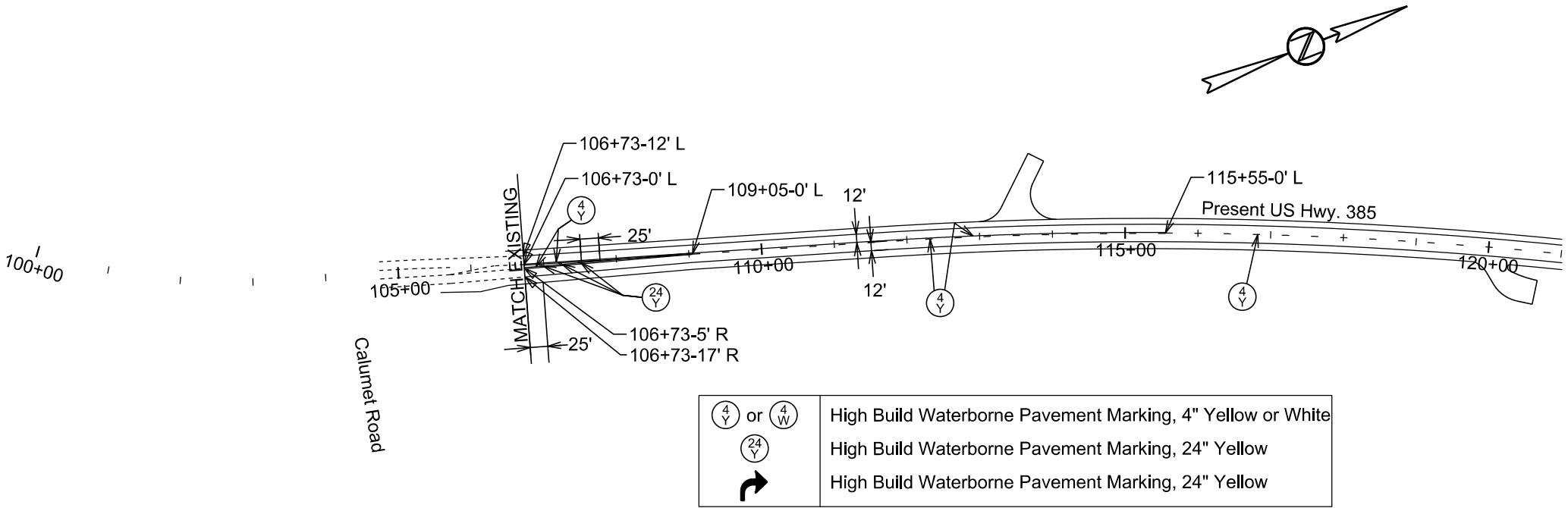


PAVEMENT MARKING LAYOUT

STATE OF SOUTH DAKOTA	PROJECT	SHEET	TOTAL SHEETS
	NH-PH-B 0385(51)87	M3	M11

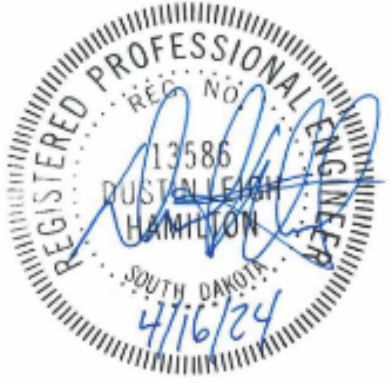
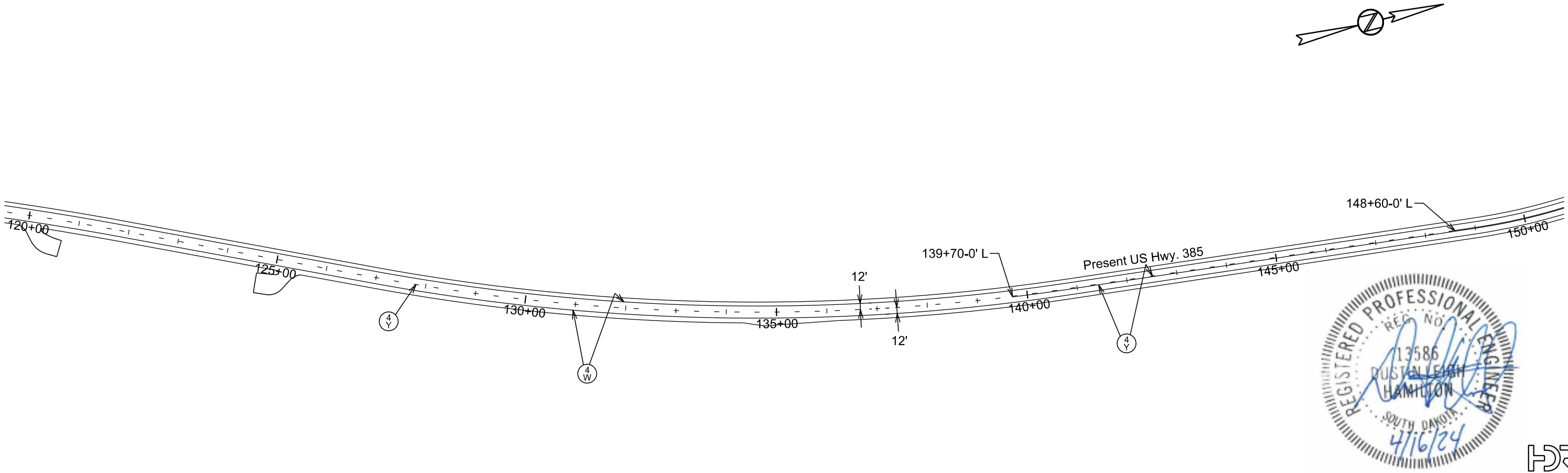
Plotting Date: 4/16/2024

Plot Scale - 1:200



	or		High Build Waterborne Pavement Marking, 4" Yellow or White
			High Build Waterborne Pavement Marking, 24" Yellow
			High Build Waterborne Pavement Marking, 24" Yellow

Plotted From - KHEDMAN



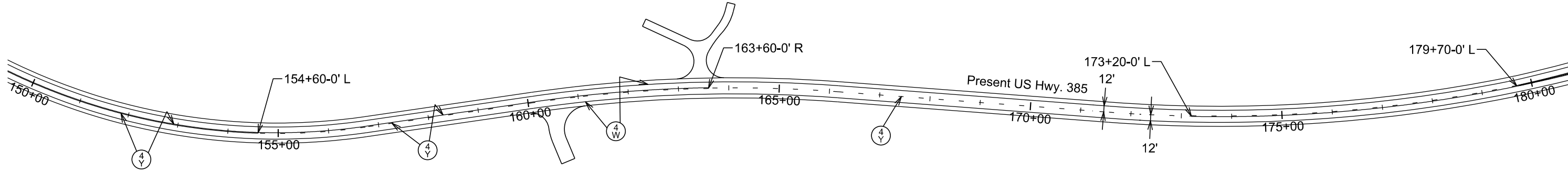
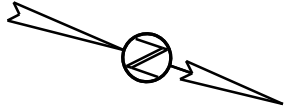
File - ...Sheet_Files\Section_M1100.dgn

PAVEMENT MARKING LAYOUT

STATE OF SOUTH DAKOTA	PROJECT	SHEET	TOTAL SHEETS
	NH-PH-B 0385(51)87	M4	M11

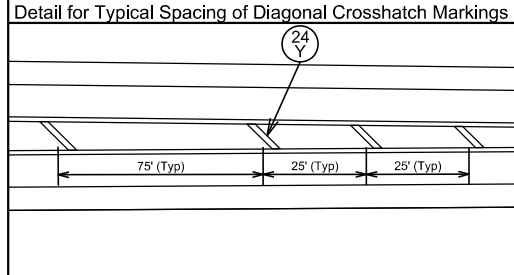
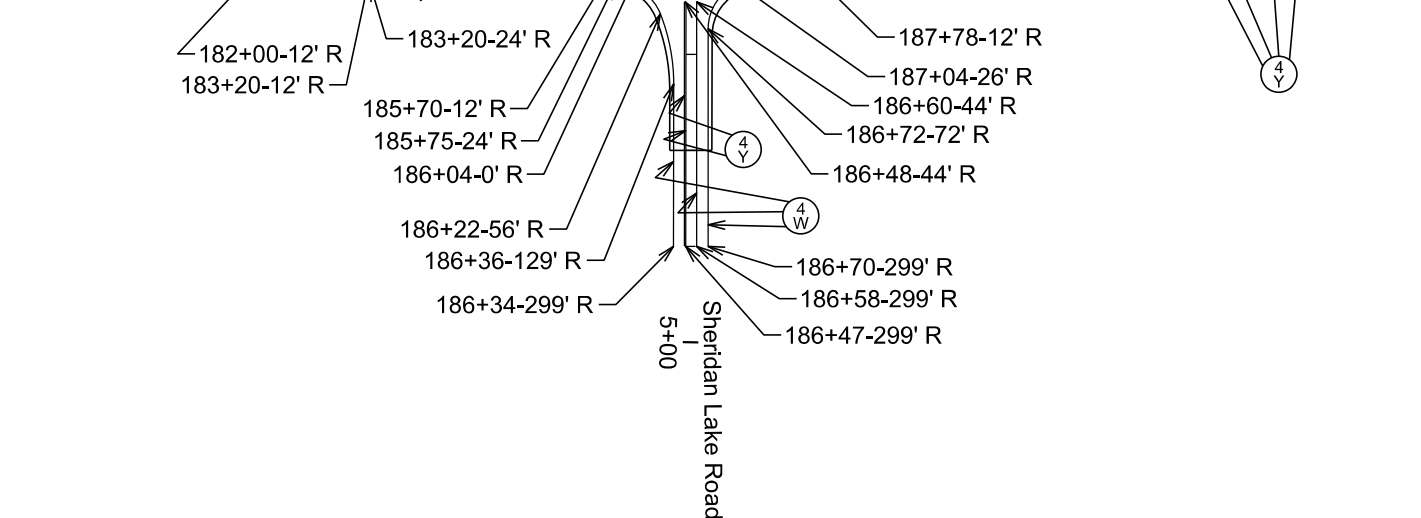
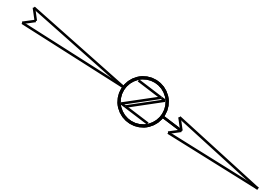
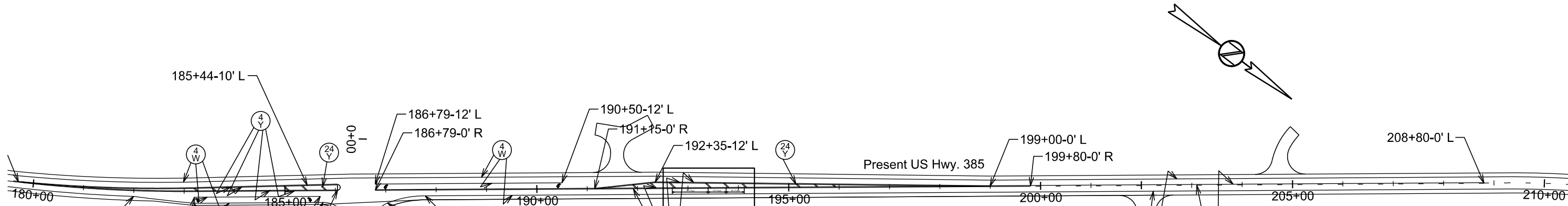
Plotting Date: 4/16/2024

Plot Scale - 1:200



	High Build Waterborne Pavement Marking, 4" Yellow or White
	High Build Waterborne Pavement Marking, 24" Yellow
	High Build Waterborne Pavement Marking, 24" Yellow

Plotted From - KHEDMAN



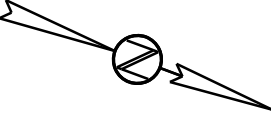
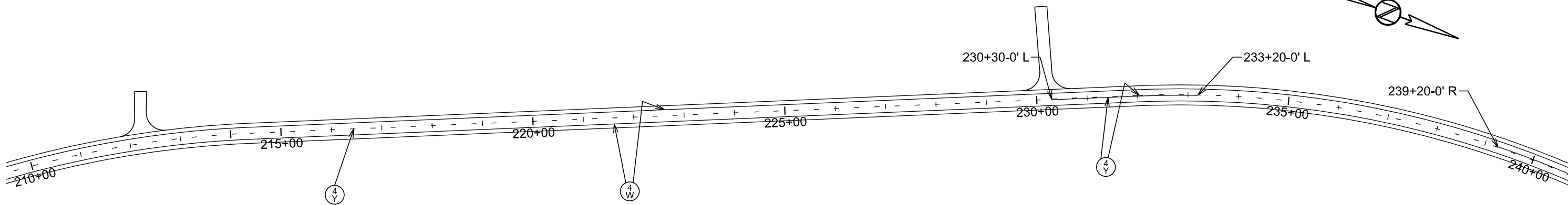
File - ...Sheet_Files\Section_M1150.dgn

PAVEMENT MARKING LAYOUT

STATE OF SOUTH DAKOTA	PROJECT	SHEET	TOTAL SHEETS
	NH-PH-B 0385(51)87	M5	M11

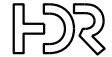
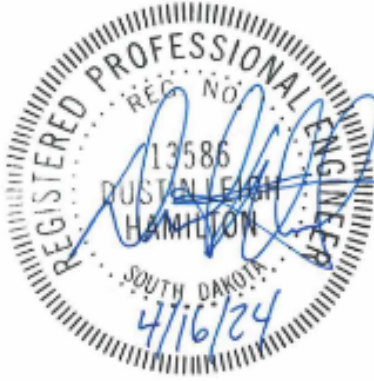
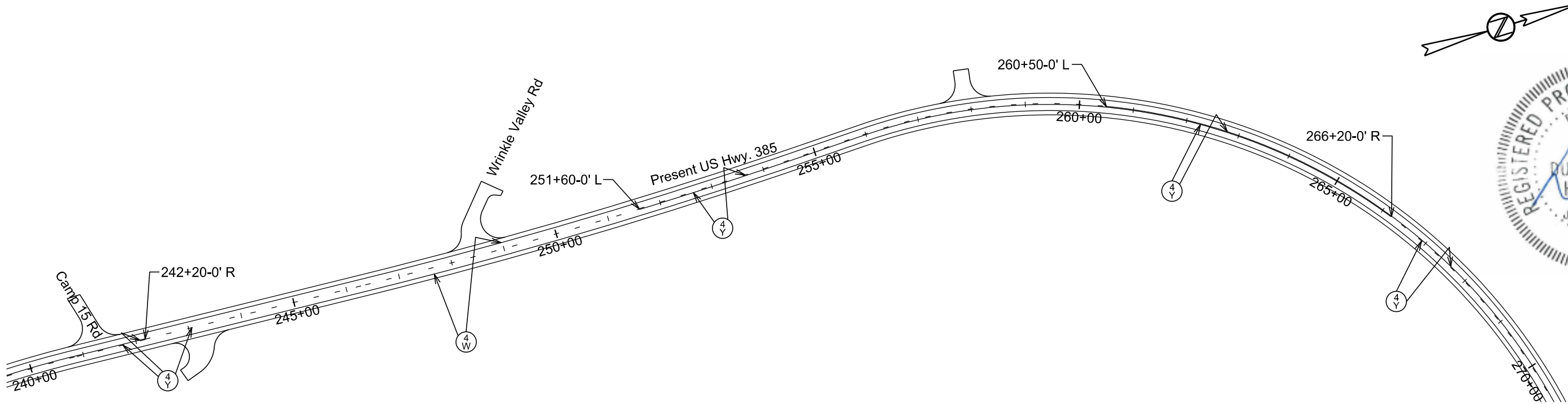
Plotting Date: 4/16/2024

Plot Scale - 1:200



	High Build Waterborne Pavement Marking, 4" Yellow or White
	High Build Waterborne Pavement Marking, 24" Yellow
	High Build Waterborne Pavement Marking, 24" Yellow

Plotted From - KHEDMAN



File - ...Sheet_Files\Section_M210.dgn

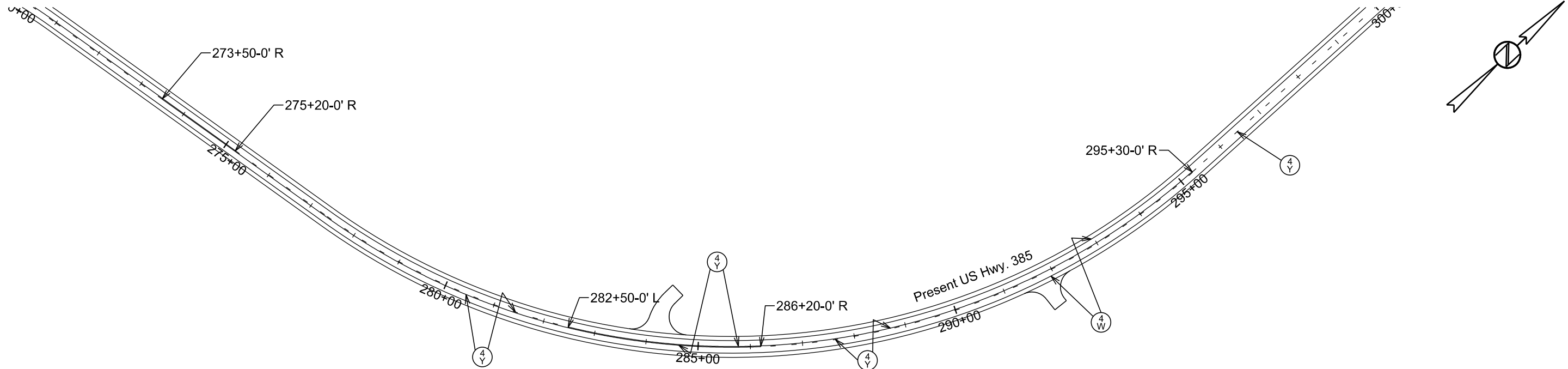
PAVEMENT MARKING LAYOUT

STATE OF SOUTH DAKOTA	PROJECT	SHEET	TOTAL SHEETS
	NH-PH-B 0385(51)87	M6	M11

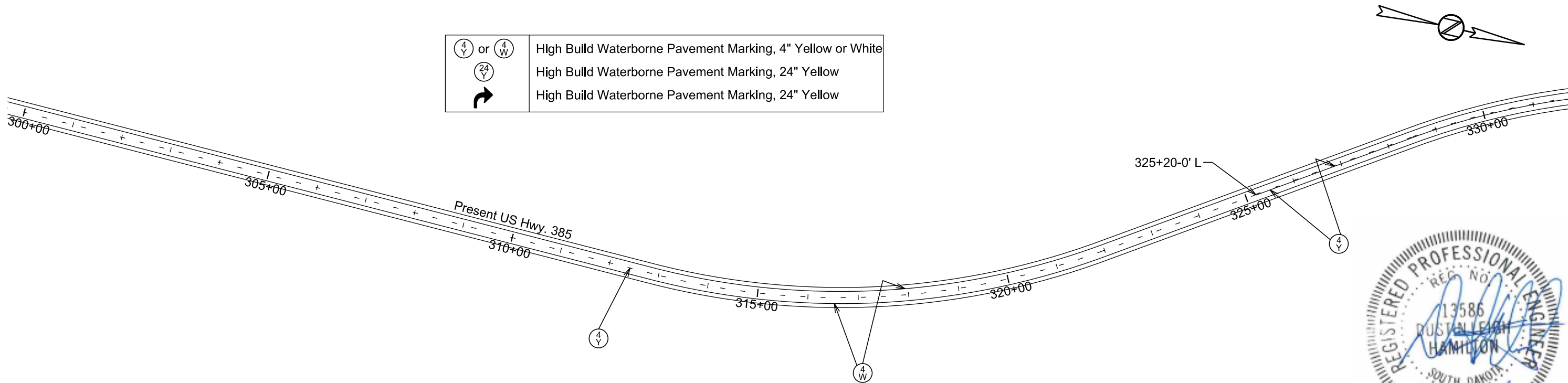
Plotting Date: 4/16/2024

Plot Scale - 1:200

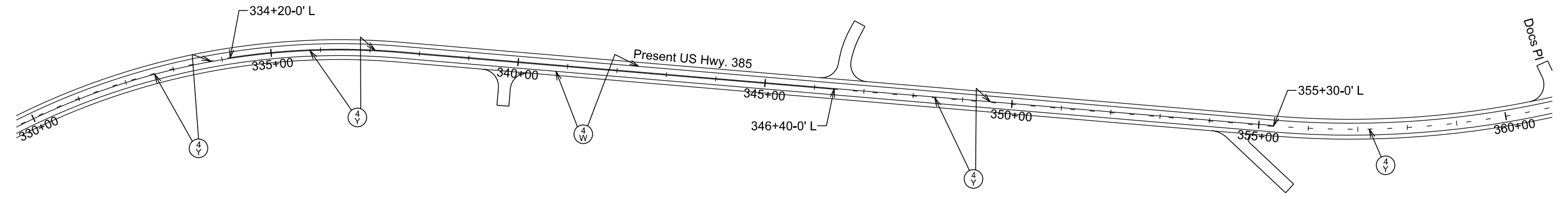
Plotted From - KHEDMAN



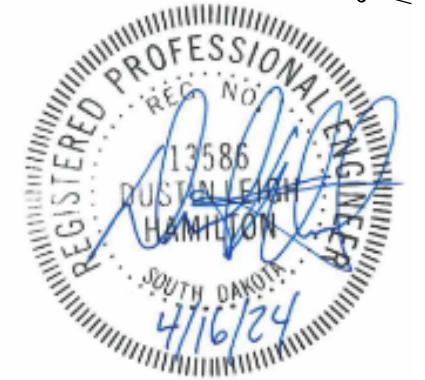
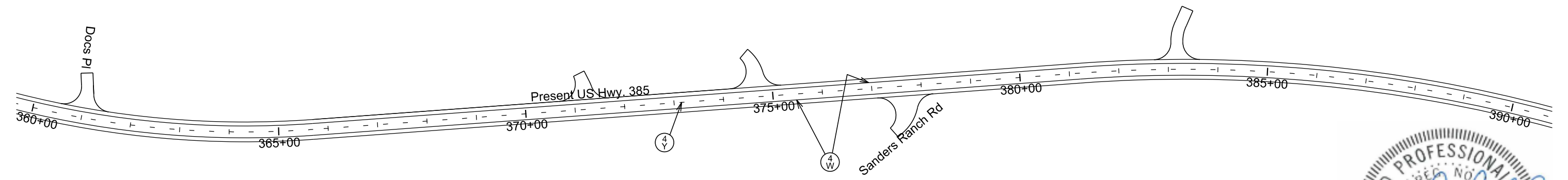
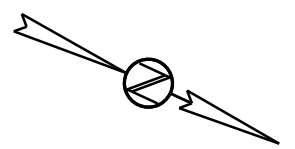
	High Build Waterborne Pavement Marking, 4" Yellow or White
	High Build Waterborne Pavement Marking, 24" Yellow
	High Build Waterborne Pavement Marking, 24" Yellow



File - ...ISheet_Files\Section_M270.dgn

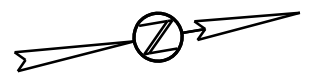


	High Build Waterborne Pavement Marking, 4" Yellow or White
	High Build Waterborne Pavement Marking, 24" Yellow
	High Build Waterborne Pavement Marking, 24" Yellow

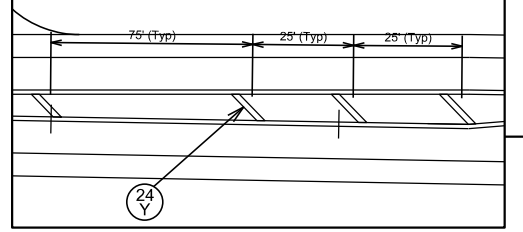


PAVEMENT MARKING LAYOUT

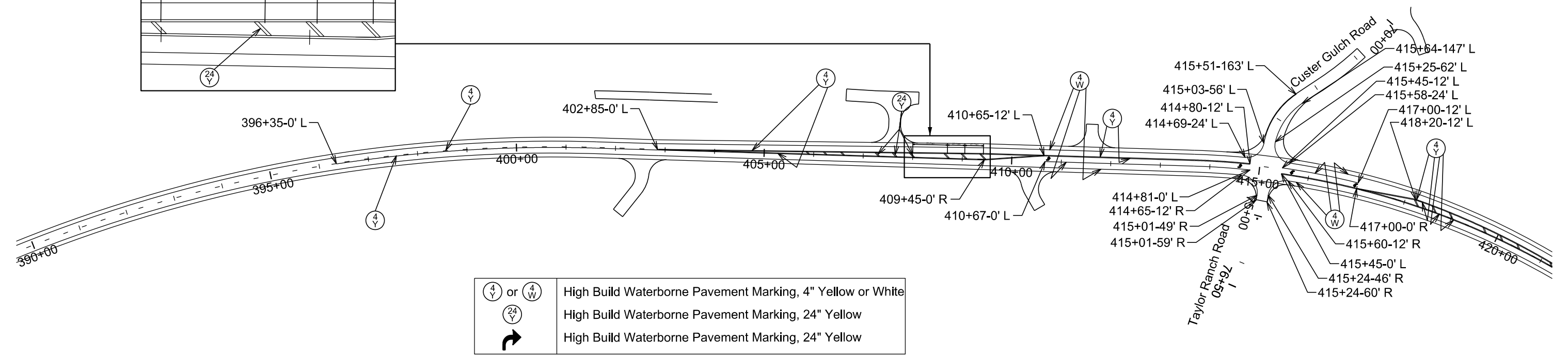
STATE OF SOUTH DAKOTA	PROJECT	SHEET	TOTAL SHEETS
	NH-PH-B 0385(51)87	M8	M11
Plotting Date: 4/16/2024			



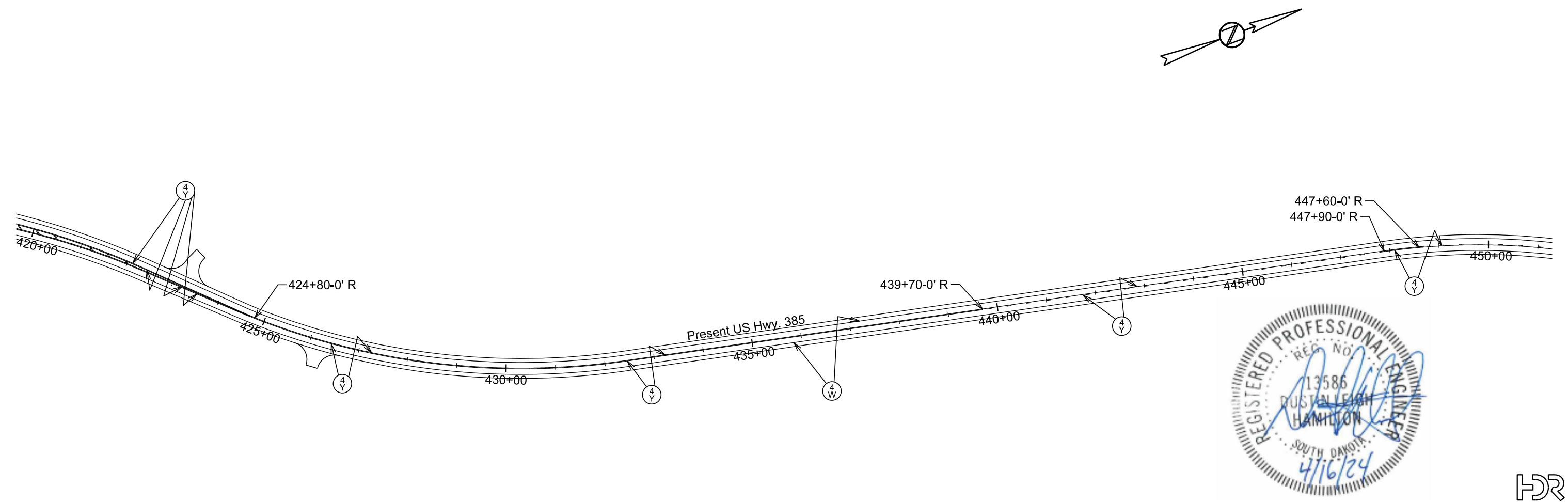
Detail for Typical Spacing of Diagonal Crosshatch Markings



Plot Scale - 1:200



Plotted From - KHEDMAN



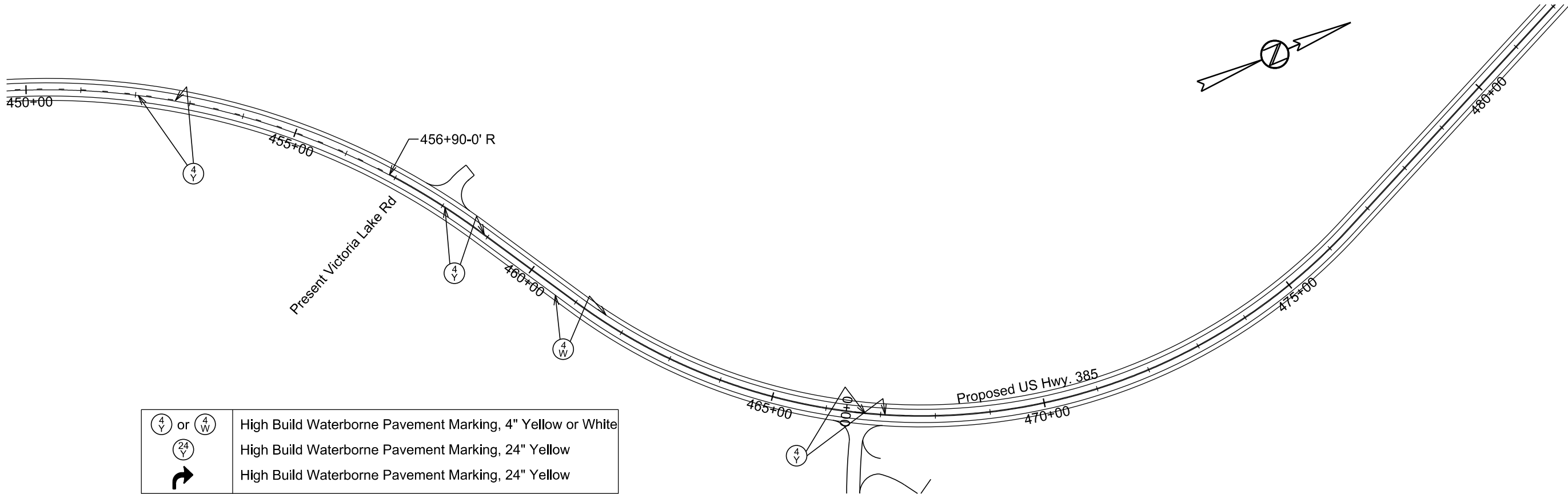
File - ...Sheet_Files\Section_M1390.dgn

PAVEMENT MARKING LAYOUT

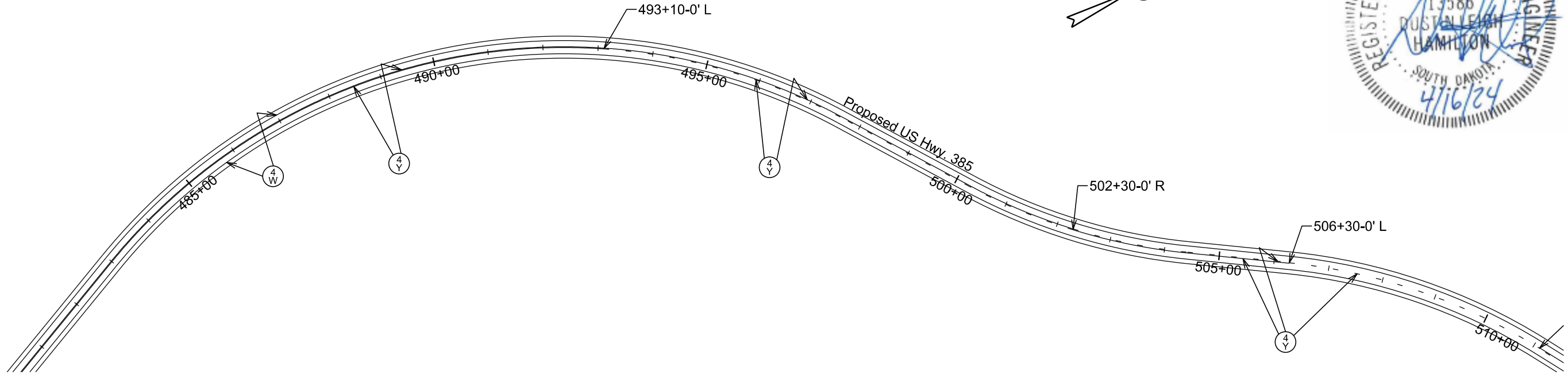
STATE OF SOUTH DAKOTA	PROJECT NH-PH-B 0385(51)87	SHEET M9	TOTAL SHEETS M11
-----------------------	-------------------------------	-------------	---------------------

Plotting Date: 4/16/2024

Plot Scale - 1:200



	High Build Waterborne Pavement Marking, 4" Yellow or White
	High Build Waterborne Pavement Marking, 24" Yellow
	High Build Waterborne Pavement Marking, 24" Yellow



Plotted From - KHEDMAN



File - ...ISheet_Files\Section_M4450.dgn

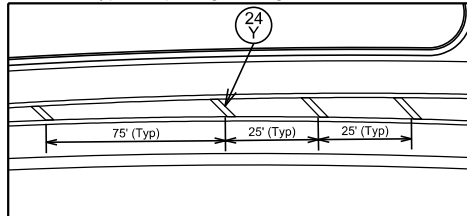
PAVEMENT MARKING LAYOUT

STATE OF SOUTH DAKOTA	PROJECT	SHEET	TOTAL SHEETS
	NH-PH-B 0385(51)87	M10	M11

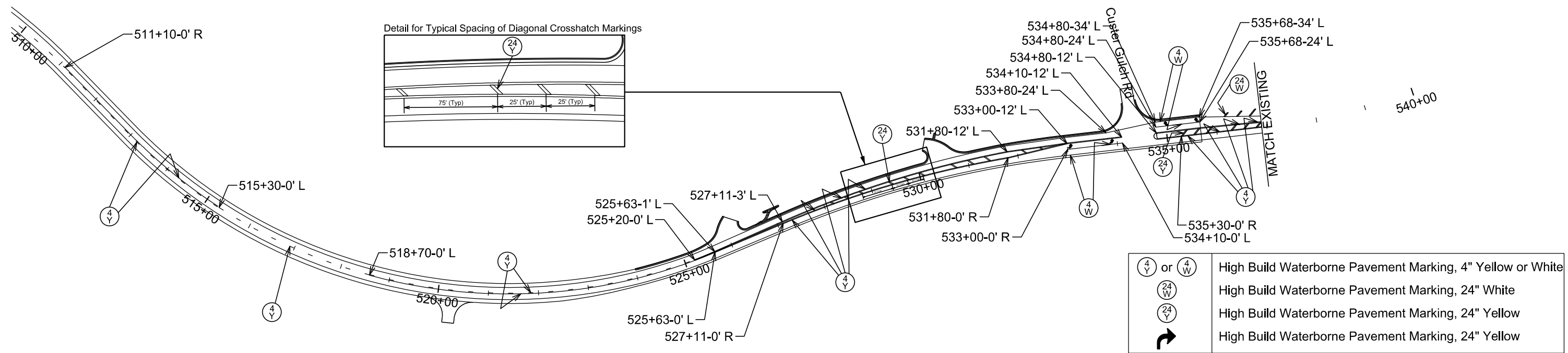
Plotting Date: 4/16/2024



Detail for Typical Spacing of Diagonal Crosshatch Markings



Plot Scale - 1:200

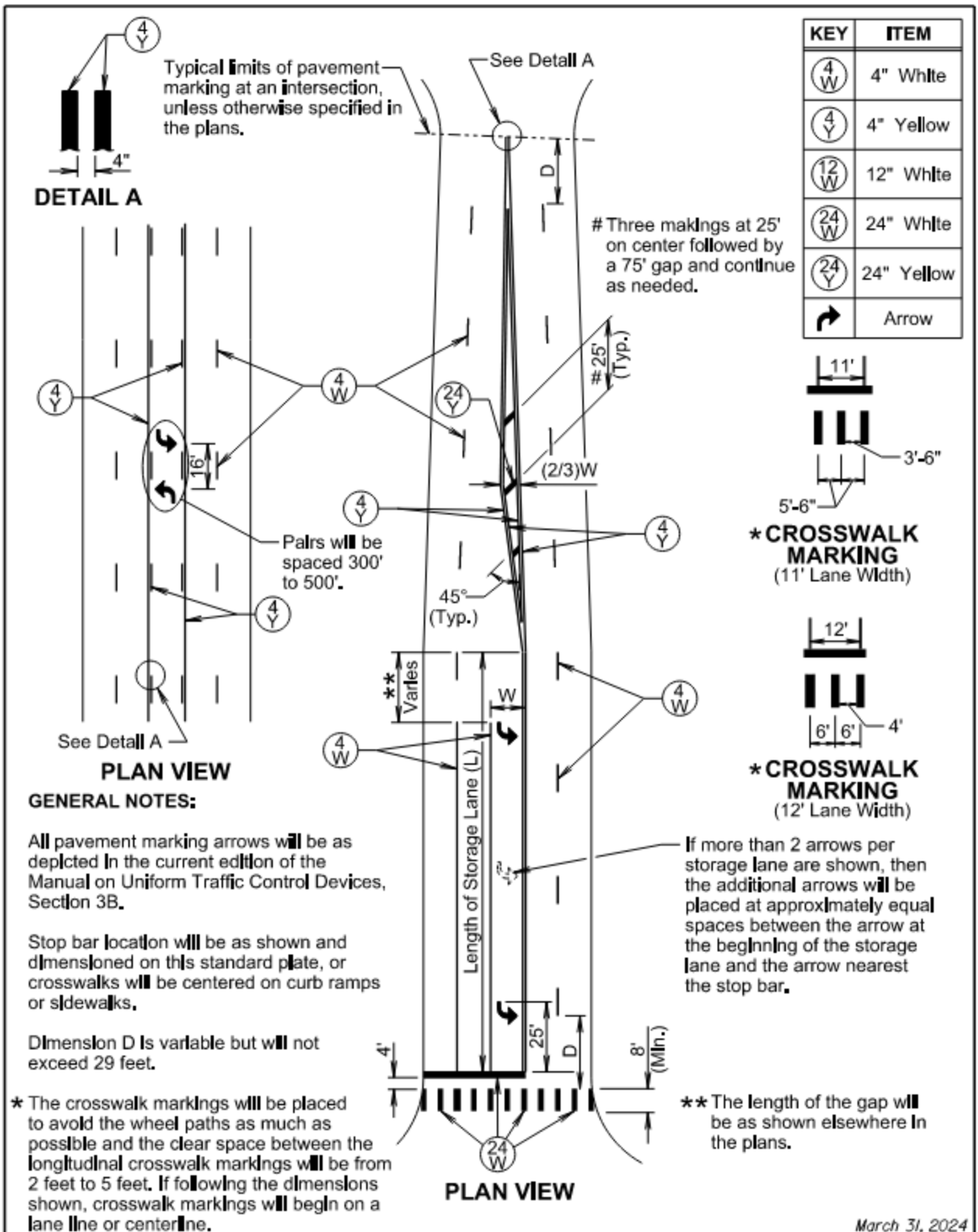


	High Build Waterborne Pavement Marking, 4" Yellow or White
	High Build Waterborne Pavement Marking, 24" White
	High Build Waterborne Pavement Marking, 24" Yellow
	High Build Waterborne Pavement Marking, 24" Yellow

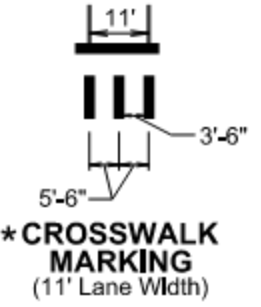
Plotted From - KHEDMAN

File - ...Sheet_Files\Section_M10.dgn





KEY	ITEM
(4 W)	4" White
(4 Y)	4" Yellow
(12 W)	12" White
(24 W)	24" White
(24 Y)	24" Yellow
↶	Arrow



March 31, 2024

Published Date: 2025	S D D O T	PAVEMENT MARKINGS FOR ADJACENT INTERSECTIONS AND CENTER TURN LANE	PLATE NUMBER 633.01
			Sheet 1 of 1