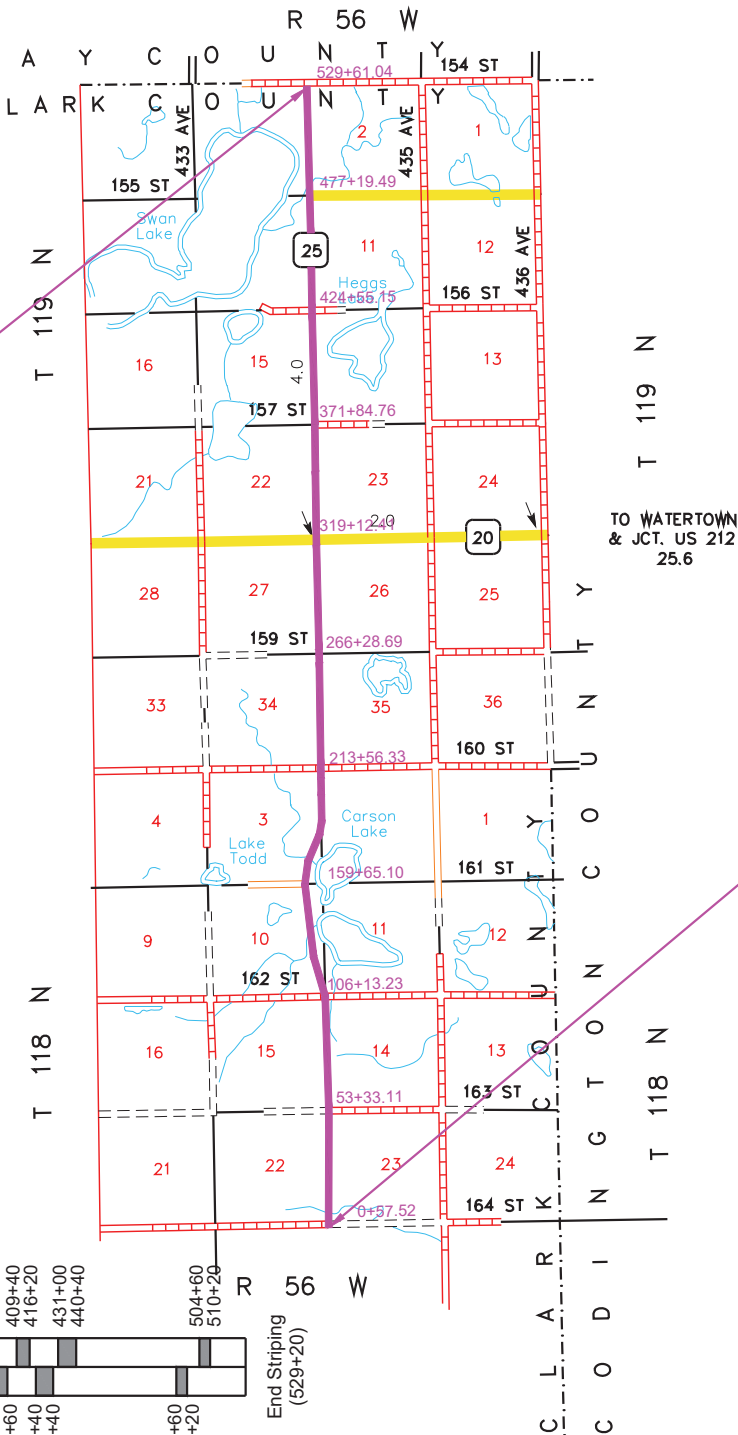


PROJECT

**END P-PH-PT 0025(81)158
END GRADING AND INTERIM
SURFACING**

Station 529+20
Located at northwest corner of Section 2 - Township
119 North - Range 56 West of the 5th PM
MRM 168.84+0.000



**BEGIN P-PH-PT 0025(81)158
BEGIN GRADING AND INTERIM
SURFACING**

Station 0+50
Located at the southeast corner of Section 22 -
Township 118 North - Range 56 West of the 5th PM
MRM 158.00+0.834

CONSULTANT CONTACT

Waylon Blasius, PE
Banner Associates, Inc.
605-692-6342

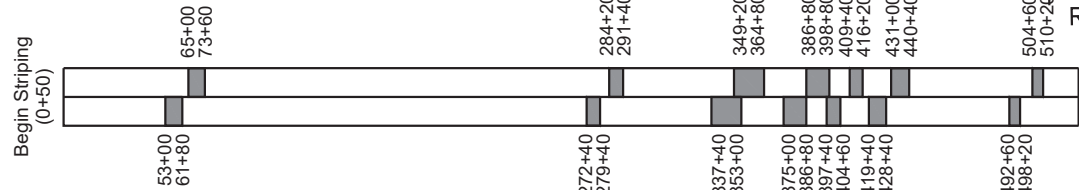
DESIGN DESIGNATION

AAADT (2021)	707
AAADT (2041)	1032
DHV	114
D	50%
DHV T%	10.6%
AAADT T%	23.3%
V	70 mph

STORM WATER PERMIT

Major Receiving
Body of Water: Warner Lake, Swan Lake
Area Disturbed: 152 Acres
Total Project Area: 182 Acres
Approx. Begin Lat,Long: 45.0069 N , 97.5347 W

This striping diagram is for informational purposes only. Actual striping for passing/no passing zones should be determined by field verified procedures.



Gross Length	52,870.00 Feet	10.013 Miles
Length of Exceptions	0.00 Feet	0.000 Miles
Net Length	52,870.00 Feet	10.013 Miles

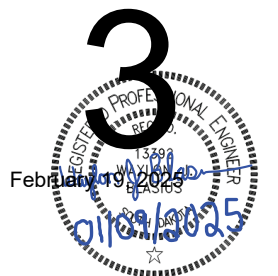
STATE OF SOUTH DAKOTA
DEPARTMENT OF TRANSPORTATION

PLANS FOR PROPOSED
PROJECT P-PH-PT 0025(81)158
S.D. HIGHWAY 25
CLARK COUNTY
GRADING & INTERIM SURFACING
PCN 04EW

STATE OF SOUTH DAKOTA	PROJECT	SHEET	TOTAL SHEETS
	P-PH-PT 0025(81)158	1	310
Plotting Date: 01/07/2025		REVISED: 01-09-2025	

INDEX OF SECTIONS

- Section A: Estimate of Quantities and Environmental Commitments
- Section B: Grading Plans
- Section C: Traffic Control Plans
- Section D: Erosion and Sediment Control Plans
- Section F: Surfacing Plans
- Section M: Pavement Marking Plans
- Section S: Permanent Signing Plans
- Section X: Cross Sections
- Section Z: Pipe Sections



Section B – Grading

BID ITEM NUMBER	ITEM	QUANTITY	UNIT
009E0010	Mobilization	Lump Sum	LS
009E3220	Reestablish Right-of-Way and Property Corner	128	Each
009E3225	Reestablish Public Land Survey System Corner	19	Each
009E3230	Grade Staking	10.013	Mile
009E3245	Final Cross Section Survey	10.013	Mile
009E3250	Miscellaneous Staking	10.013	Mile
009E3280	Slope Staking	10.013	Mile
009E3301	Engineer Directed Surveying/Staking	40.0	Hour
009E4300	Construction Schedule, Category III	Lump Sum	LS
009E4330	Project Management, Category III	Lump Sum	LS
100E0100	Clearing	Lump Sum	LS
110E0600	Remove Fence	30,941	Ft
110E1050	Remove Asphalt Concrete Approach Pavement	1,051.9	SqYd
110E5451	Salvage Riprap	14,798.6	Ton
110E7040	Remove Gate for Reset	4	Each
120E0010	Unclassified Excavation	574,282	CuYd
120E0500	Option Borrow Excavation	138,020	CuYd
120E0600	Contractor Furnished Borrow Excavation	65,558	CuYd
120E0900	Contaminated Material Excavation	100	CuYd
120E1000	Muck Excavation	28,362	CuYd
120E2000	Undercutting	139,548	CuYd
120E6100	Water for Embankment	5,837.0	MGal
250E0020	Incidental Work, Grading	Lump Sum	LS
260E6010	Granular Material	120.0	Ton
* 270E0022	Salvage Asphalt Mix Material	9,924.0	Ton
270E0040	Salvage and Stockpile Asphalt Mix and Granular Base Material	160,416.8	Ton
* 270E0040	Salvage and Stockpile Asphalt Mix and Granular Base Material	9,357.2	Ton
* 270E0210	Haul and Stockpile Granular Material	9,357.2	Ton
* 270E0230	Haul and Stockpile Asphalt Mix Material	9,924.0	Ton
421E0100	Pipe Culvert Undercut	880	CuYd
450E0123	18" RCP Class 3, Furnish	142	Ft
450E0130	18" RCP, Install	142	Ft
450E0143	24" RCP Class 3, Furnish	2,370	Ft
450E0150	24" RCP, Install	2,370	Ft
450E0163	30" RCP Class 3, Furnish	636	Ft
450E0170	30" RCP, Install	636	Ft
450E0183	36" RCP Class 3, Furnish	480	Ft
450E0190	36" RCP, Install	480	Ft
450E0193	42" RCP Class 3, Furnish	496	Ft
450E0200	42" RCP, Install	496	Ft
450E0203	48" RCP Class 3, Furnish	194	Ft
450E0210	48" RCP, Install	194	Ft

Section B – Grading (Continued)

BID ITEM NUMBER	ITEM	QUANTITY	UNIT
450E0213	54" RCP Class 3, Furnish	414	Ft
450E0220	54" RCP, Install	414	Ft
450E0223	60" RCP Class 3, Furnish	80	Ft
450E0230	60" RCP, Install	80	Ft
450E0243	72" RCP Class 3, Furnish	80	Ft
450E0250	72" RCP, Install	80	Ft
450E2028	36" RCP Flared End, Furnish	10	Each
450E2029	36" RCP Flared End, Install	10	Each
450E2032	42" RCP Flared End, Furnish	10	Each
450E2033	42" RCP Flared End, Install	10	Each
450E2036	48" RCP Flared End, Furnish	4	Each
450E2037	48" RCP Flared End, Install	4	Each
450E2040	54" RCP Flared End, Furnish	10	Each
450E2041	54" RCP Flared End, Install	10	Each
450E2044	60" RCP Flared End, Furnish	2	Each
450E2045	60" RCP Flared End, Install	2	Each
450E2052	72" RCP Flared End, Furnish	2	Each
450E2053	72" RCP Flared End, Install	2	Each
450E2200	24" RCP Sloped End, Furnish	42	Each
450E2201	24" RCP Sloped End, Install	42	Each
450E2204	30" RCP Sloped End, Furnish	16	Each
450E2205	30" RCP Sloped End, Install	16	Each
450E2304	18" RCP Safety End, Furnish	4	Each
450E2307	18" RCP Safety End, Install	4	Each
450E2308	24" RCP Safety End, Furnish	14	Each
450E2311	24" RCP Safety End, Install	14	Each
450E3023	30" RCP Arch Class 3, Furnish	128	Ft
450E3030	30" RCP Arch, Install	128	Ft
450E4604	30" RCP Arch Sloped End, Furnish	4	Each
450E4605	30" RCP Arch Sloped End, Install	4	Each
450E4759	18" CMP 16 Gauge, Furnish	1,030	Ft
450E4760	18" CMP, Install	1,030	Ft
450E4769	24" CMP 16 Gauge, Furnish	414	Ft
450E4770	24" CMP, Install	414	Ft
450E5406	18" CMP Safety End, Furnish	26	Each
450E5407	18" CMP Safety End, Install	26	Each
450E5410	24" CMP Safety End, Furnish	12	Each
450E5411	24" CMP Safety End, Install	12	Each
451E6080	Adjust Water Valve Box	1	Each
451E7300	Repair Drain Tile	500	Ft
464E0100	Controlled Density Fill	153.4	CuYd
560E5003	5'x7' Reinforced Concrete Cattle Pass, Furnish	84.0	Ft
560E5004	5'x7' Reinforced Concrete Cattle Pass, Install	84.0	Ft

Section B – Grading (Continued)

BID ITEM NUMBER	ITEM	QUANTITY	UNIT
560E5053	5'x7' Reinforced Concrete Cattle Pass End Section, Furnish	2	Each
560E5054	5'x7' Reinforced Concrete Cattle Pass End Section, Install	2	Each
600E0300	Type III Field Laboratory	1	Each
620E0020	Type 2 Right-of-Way Fence	30,354	Ft
620E0040	Type 4 Right-of-Way Fence	2,604	Ft
620E0515	Type 1A Temporary Fence	2,500	Ft
620E0520	Type 2 Temporary Fence	17,065	Ft
620E0530	Type 3 Temporary Fence	1,272	Ft
620E1020	2 Post Panel	73	Each
620E1030	3 Post Panel	40	Each
620E2012	12' Tubular Gate	2	Each
620E2100	Reset Gate	4	Each
700E0110	Class A Riprap	11,015.0	Ton
700E2010	Place Riprap	14,798.6	Ton
720E1010	PVC Coated Bank and Channel Protection Gabion	102.5	CuYd
831E0110	Type B Drainage Fabric	18,354	SqYd
900E0010	Refurbish Single Mailbox	6	Each
900E0012	Refurbish Double Mailbox	1	Each
900E1150	Right of Way Marker	70	Each

SPECIFICATIONS

Standard Specifications for Roads and Bridges, 2015 Edition and Required Provisions, Supplemental Specifications, and Special Provisions as included in the Proposal.

INDEX OF SHEETS

A1 to A2 Estimate of Quantities for Sections B, C, D, L, M, and S
A3 to A6 Environmental Commitments

Section C – Traffic Control

BID ITEM NUMBER	ITEM	QUANTITY	UNIT
632E2022	4"x4" White Delineator Back to Back with 1.12 Lb/Ft Post	71	Each
633E1200	High Build Waterborne Pavement Marking Paint, White	900	Gal
633E1205	High Build Waterborne Pavement Marking Paint, Yellow	383	Gal
634E0010	Flagging	200.0	Hour
634E0020	Pilot Car	50.0	Hour
634E0110	Traffic Control Signs	1,288.2	SqFt
634E0120	Traffic Control, Miscellaneous	Lump Sum	LS
634E0275	Type 3 Barricade	52	Each
634E1002	Detour and Restriction Signing	4,201.2	SqFt

Section F – Surfacing

BID ITEM NUMBER	ITEM	QUANTITY	UNIT
120E6200	Water for Granular Material	1,930.3	MGal
205E0010	Dust Control Chloride	33,792	Lb
260E1030	Base Course, Salvaged	160,281.4	Ton
260E3010	Gravel Surfacing	250.0	Ton
260E3500	Temporary Gravel Surfacing	400.0	Ton
320E1200	Asphalt Concrete Composite	3,200.0	Ton
330E0010	MC-70 Asphalt for Prime	301.6	Ton
330E0300	SS-1h or CSS-1h Asphalt for Fog Seal	40.6	Ton
330E1000	Blotting Sand for Prime	752.2	Ton
330E3000	Sand for Fog Seal	10.0	Ton
360E0020	AE150S Asphalt for Surface Treatment	256.3	Ton
360E1050	Type 3 Cover Aggregate	3,441.2	Ton

Section D – Erosion Control

BID ITEM NUMBER	ITEM	QUANTITY	UNIT
110E1690	Remove Sediment	1.2	CuYd
110E1693	Remove Erosion Control Wattle	135	Ft
110E1700	Remove Silt Fence	6,382	Ft
230E0010	Placing Topsoil	115,875	CuYd
730E0100	Cover Crop Seeding	110.0	Bu
730E0208	Type E Permanent Seed Mixture	91	Lb
730E0212	Type G Permanent Seed Mixture	3,088	Lb
731E0200	Fertilizing	61.10	Ton
732E0100	Mulching	196.2	Ton
732E0500	Fiber Reinforced Matrix	72.1	Ton
734E0103	Type 3 Erosion Control Blanket	49,356	SqYd
734E0154	12" Diameter Erosion Control Wattle	540	Ft
734E0165	Remove and Reset Erosion Control Wattle	135	Ft
734E0325	Surface Roughening	52.6	Acre
734E0510	Shaping for Erosion Control Blanket	27,614	Ft
734E0602	Low Flow Silt Fence	21,465	Ft
734E0604	High Flow Silt Fence	4,062	Ft
734E0610	Mucking Silt Fence	1,772	CuYd
734E0620	Repair Silt Fence	6,382	Ft
734E0630	Floating Silt Curtain	10,245	Ft
900E1320	Construction Entrance	3	Each

Section M – Pavement Marking

BID ITEM NUMBER	ITEM	QUANTITY	UNIT
633E1200	High Build Waterborne Pavement Marking Paint, White	566	Gal
633E1205	High Build Waterborne Pavement Marking Paint, Yellow	166	Gal
633E1272	High Build Waterborne Pavement Marking Paint, Arrow	6	Each

Section S – Permanent Signing

BID ITEM NUMBER	ITEM	QUANTITY	UNIT
110E0130	Remove Traffic Sign	103	Each
110E0135	Remove Delineator	88	Each
110E7150	Remove Sign for Reset	1	Each
632E1320	2.0"x2.0" Perforated Tube Post	935.0	Ft
632E1340	2.5"x2.5" Perforated Tube Post	50.0	Ft
632E2022	4"x4" White Delineator Back to Back with 1.12 Lb/Ft Post	91	Each
632E2028	4" Tubular White Delineator with 1.12 Lb/Ft Post	22	Each
632E2510	Type 2 Object Marker Back to Back	232	Each
632E3203	Flat Aluminum Sign, Nonremovable Copy High Intensity	321.3	SqFt
632E3205	Flat Aluminum Sign, Nonremovable Copy Super/Very High Intensity	198.5	SqFt
632E3500	Reset Sign	1	Each

ENVIRONMENTAL COMMITMENTS

The SDDOT is committed to protecting the environment and uses Environmental Commitments as a communication tool for the Engineer and Contractor to ensure that attention is given to avoid, minimize, and/or mitigate an environmental impact. Environmental commitments to various agencies and the public have been made to secure approval of this project. An agency with permitting authority can delay a project if identified environmental impacts have not been adequately addressed. Unless otherwise designated, the Contractor's primary contact regarding matters associated with these commitments will be the Project Engineer. During construction, the Project Engineer will verify that the Contractor has met Environmental Commitment requirements. These environmental commitments are not subject to change without prior written approval from the SDDOT Environmental Office.

Additional guidance on SDDOT's Environmental Commitments can be accessed through the Environmental Procedures Manual found at: <https://dot.sd.gov/media/documents/EnvironmentalProceduresManual.pdf>

For questions regarding change orders in the field that may have an effect on an Environmental Commitment, the Project Engineer will contact the Environmental Engineer at 605-773-3180 or 605-773-4336 to determine whether an environmental analysis and/or resource agency coordination is necessary.

Once construction is complete, the Project Engineer will review all environmental commitments for the project and document their completion.

COMMITMENT A: AQUATIC RESOURCES
COMMITMENT A1: WETLANDS

All efforts to avoid and minimize wetland impacts from the project have resulted in approximately 22.18 acres of wetlands (includes temporary and permanent) becoming impacted. Refer to Section B – Grading Plans/plans for location and boundaries of the impacted wetlands.

Table of Impacted Wetlands

Wetland No.	Station	Perm. Impact Left (Acres)	Perm. Impact Right (Acres)	Temp. Impact Left (Acres)	Temp. Impact Right (Acres)	Total Impact (Acres)
PCN 04EW						
WL 1	1+10 to 3+00	0.000	0.062	0.000	0.000	0.062
WL 2a	4+60 to 8+00	0.055	0.000	0.224	0.000	0.279
WL 2b	4+60 to 8+10	0.000	0.118	0.000	0.171	0.289
WL 3	21+00 to 24+10	0.000	0.000	0.277	0.000	0.277
WL 4a	20+80 to 31+40	0.000	0.294	0.000	0.072	0.366
WL 4b	22+20 to 22+50	0.000	0.000	0.000	0.019	0.019

WL 5	36+10 to 38+30	0.000	0.049	0.000	0.018	0.067
WL 6	38+80 to 40+00	0.000	0.055	0.000	0.009	0.064
WL 7	43+20 to 44+30	0.000	0.000	0.000	0.000	0.000
WL 8	46+80 to 49+90	0.000	0.000	0.000	0.000	0.000
WL 9	58+30 to 60+20	0.000	0.000	0.000	0.000	0.000
WL 10	64+00 to 65+10	0.000	0.000	0.019	0.000	0.019
WL 11a	72+90 to 74+80	0.009	0.000	0.083	0.000	0.092
WL 11b	74+20 to 78+30	0.000	0.009	0.000	0.038	0.047
WL 12a	88+00 to 89+80	0.115	0.000	0.025	0.000	0.140
WL 12b	85+20 to 90+00	0.000	0.119	0.000	0.227	0.346
WL 13a	98+50 to 102+60	0.000	0.039	0.000	0.072	0.111
WL 13b	108+80 to 110+00	0.000	0.000	0.000	0.000	0.000
WL 13c	115+50 to 122+60	0.000	0.000	0.000	0.098	0.098
WL 13d	132+30 to 142+50	0.000	0.904	0.000	0.533	1.437
WL 13e	143+50 to 146+50	0.000	0.040	0.000	0.172	0.212
WL 14	109+80 to 112+41	0.069	0.000	0.000	0.000	0.069
WL 15	130+70 to 142+00	1.234	0.000	0.781	0.000	2.015
WL 16a	159+80 to 173+60	0.782	0.000	0.774	0.000	1.556
WL 16b	155+30 to 180+90	0.000	1.253	0.000	1.580	2.833
WL 16c	173+90 to 179+40	0.301	0.000	0.398	0.000	0.699
WL 17a	269+20 to 273+41	0.151	0.000	0.285	0.000	0.436
WL 17b	132+40 to 142+50	0.000	0.265	0.000	0.259	0.524
WL 18	280+20 to 284+20	0.000	0.000	0.000	0.000	0.000
WL 19a	293+00 to 294+70	0.057	0.000	0.000	0.000	0.057
WL 19b	286+00 to 292+70	0.405	0.000	0.343	0.000	0.748

WL 19c	287+50 to 295+10	0.000	0.734	0.000	0.433	1.167
WL 20a	323+80 to 340+90	0.226	0.000	1.404	0.000	1.630
WL 20b	324+50 to 326+40	0.000	0.000	0.000	0.036	0.036
WL 20c	326+00 to 340+10	0.000	0.257	0.000	0.883	1.140
WL 21a	368+10 to 371+80	0.031	0.000	0.243	0.000	0.274
WL 21b	364+50 to 375+30	0.000	0.100	0.000	0.428	0.528
WL 22	371+90 to 376+10	0.227	0.000	0.261	0.000	0.488
WL 23	372+00 to 375+30	0.000	0.117	0.000	0.227	0.344
WL 24a	416+90 to 418+90	0.034	0.000	0.118	0.000	0.152
WL 24b	417+50 to 419+70	0.000	0.066	0.000	0.075	0.141
WL 25	439+10 to 441+90	0.057	0.000	0.145	0.000	0.202
WL 26a	458+80 to 465+40	0.420	0.000	0.440	0.000	0.860
WL 26b	474+40 to 485+80	0.488	0.000	0.871	0.000	1.359
WL 26c	478+50 to 486+70	0.000	0.407	0.000	0.223	0.630
WL 26d	492+50 to 497+70	0.135	0.000	0.230	0.000	0.365

Action Taken/Required:

SDDOT will acquire 15.26 FCU from the Ducks Unlimited In-Lieu Fee program to mitigate permanent impacts.

Temporary impacts identified in the Table of Impacted Wetlands will not be mitigated as original contours and elevations will be re-established as designated in Section B – Grading Plans. Prior to initiating temporary work in wetlands, the Contractor will submit a plan to the Project Engineer in accordance with Section 7.21 D of the Specifications.

COMMITMENT B: FEDERALLY THREATENED, ENDANGERED, AND PROTECTED SPECIES
COMMITMENT B4: BALD EAGLE

Bald eagles are known to occur in this area.

Action Taken/Required:

If a nest is observed within one mile of the project site, notify the Project Engineer immediately so that he/she can consult with the Environmental Office for an appropriate course of action.

COMMITMENT C: WATER SOURCE

The Contractor will not withdraw water with equipment previously used outside the State of South Dakota or previously used in aquatic invasive species (AIS) positive waters within South Dakota without prior approval from the SDDOT Environmental Office. To prevent and control the introduction and spread of invasive species into the project vicinity, all equipment will be power washed with hot water (≥140 °F) and completely dried for a minimum of 7 days prior to subsequent use. South Dakota administrative rule 41:10:04:02 forbids the possession and transport of AIS; therefore, all attached dirt, mud, debris and vegetation must be removed and all compartments and tanks capable of holding standing water must be drained. This includes, but is not limited to, all equipment, pumps, lines, hoses and holding tanks. The Contractor will not withdraw water directly from streams of the James, Big Sioux, and Vermillion watersheds without prior approval from the SDDOT Environmental Office.

Action Taken/Required:

The Contractor will obtain the necessary permits from the regulatory agencies such as the South Dakota Department of Agriculture and Natural Resources (DANR) and the United States Army Corps of Engineers (USACE) prior to water extraction activities.

Additional information and mapping of water sources impacted by Aquatic Invasive Species in South Dakota can be accessed at:

< <https://sdleastwanted.sd.gov/maps/default.aspx> >

< [South Dakota Administrative Rule 41:10:04 Aquatic Invasive Species: https://sdlegislature.gov/rules/DisplayRule.aspx?Rule=41:10:04](https://sdlegislature.gov/rules/DisplayRule.aspx?Rule=41:10:04) >

COMMITMENT D: WATER QUALITY STANDARDS

COMMITMENT D1: SURFACE WATER QUALITY

This project is in the vicinity of multiple streams and wetlands. These waters are considered waters of the state and are protected under Administrative Rules of South Dakota (ARSD) Chapter 74:51. Special construction measures may have to be taken to ensure that this water body is not impacted.

Action Taken/Required:

The Contractor is advised that the South Dakota Surface Water Quality Standards, administered by the South Dakota Department of Agriculture and Natural Resources (DANR), apply to this project. Special construction measures will be taken to ensure the above standard(s) of the surface waters are maintained and protected.

COMMITMENT D2: SURFACE WATER DISCHARGE

The DANR General Permit for Temporary Discharge Activities is required for temporary dewatering and discharges to waters of the state. The effluent limit for total suspended solids will be 90 mg/L 30-day average. The effluent limit applies to discharges to all waters of the state except discharges to waters classified as coldwater permanent fish life propagation waters according to the ARSD 74:51:01:45. For discharges to waters of the state classified as coldwater permanent fish life propagation waters, the effluent limit for total suspended solids will be 53 mg/L daily maximum.

The permittee has the option of completing effluent testing or implementing a pollution prevention plan for compliance with this permit. If the permittee develops a pollution prevention plan instead of total suspended solids sampling, the plan must be developed and implemented prior to discontinuing total suspended solids sampling. Refer to Section 4.0 of the permit. If any pollutants are suspected of being discharged, a sample must be taken for those parameters listed in Section 3.4 of the permit.

Refer to Commitment D1: Surface Water Quality for stream classification.

Action Taken/Required:

If construction dewatering is required and this project is currently covered under a General Permit for Stormwater Discharges Associated with Construction Activities, the contractor will need to submit the dewatering information to the Project Engineer using the following form:

<<https://dot.sd.gov/media/documents/SDDOTDewateringInfoCDX.pdf>>

The Contractor will provide a copy of the approved permit or the submitted dewatering information to the Project Engineer prior to proceeding with any dewatering activities. The approved permit or submitted dewatering information must be kept on-site and as part of the project records.

Effluent monitoring, as a result of dewatering activities, will be summarized for each month and recorded on a separate Discharge Monitoring Report (DMR) and submitted to DANR monthly. Additional information can be found at:

<
<https://danr.sd.gov/OfficeOfWater/SurfaceWaterQuality/swdpermitting/Ereporting.aspx> >

COMMITMENT E: STORM WATER

Construction activities constitute 1 acre or more of earth disturbance and/or work in a waterway.

Action Taken/Required:

The DANR General Permit for Stormwater Discharges Associated with Construction Activities is required for construction activity disturbing one or more acres of earth and work in a waterway. The SDDOT is the owner of this permit and will submit the NOI to DANR 15 days prior to project start in order to obtain coverage under the General Permit. Work can begin once the DANR letter of approval is received.

The Contractor must adhere to the “Special Provision Regarding Storm Water Discharges to Waters of the State.”

The Contractor will complete the DANR Contractor Certification Form prior to the pre-construction meeting. The form certifies under penalty of law that the Contractor understands and will comply with the terms and conditions of the permit for this project. Work may not begin on this project until this form is signed and submitted to DANR.

The form can be found at:

<
https://danr.sd.gov/OfficeOfWater/SurfaceWaterQuality/docs/DANR_CGPAppendixCCA2018Fillable.pdf >

The Contractor is advised that permit coverage may also be required for off-site activities, such as borrow and staging areas, which are the responsibility of the Contractor.

Storm Water Pollution Prevention Plan

The Storm Water Pollution Prevention Plan (SWPPP) will be developed prior to the submittal of the NOI and will be implemented for all construction activities for compliance with the permit. The SWPPP must be kept on-site and updated as site conditions change. Erosion control measures and best management practices will be implemented in accordance with the SWPPP.

The DOT 298 Form will be used for site inspections and to document changes to the SWPPP. A copy of the completed inspection form will be filed with the SWPPP documents and retained for a minimum of three years.

The inspection will include disturbed areas of the construction site that have not been finally stabilized, areas used for storage materials, structural control measures, and locations where vehicles enter or exit the site. These areas will be inspected for evidence of, or the potential for, pollutants entering the drainage system. Erosion and sediment control measures identified in the SWPPP will be observed to ensure that they are operating correctly, and sediment is not tracked off the site.

Information on storm water permits and SWPPPs are available on the following websites:

SDDOT: < <https://dot.sd.gov/doing-business/environmental/stormwater> >
DANR:<<https://danr.sd.gov/OfficeOfWater/SurfaceWaterQuality/stormwater/default.aspx> >
EPA: < <https://www.epa.gov/npdes> >

COMMITMENT H: WASTE DISPOSAL SITE

The Contractor will furnish a site(s) for the disposal of construction and/or demolition debris generated by this project.

Action Taken/Required:

Construction and/or demolition debris may not be disposed of within the Public ROW.

The waste disposal site(s) will be managed and reclaimed in accordance with the following from the General Permit for Construction/Demolition Debris Disposal Under the South Dakota Waste Management Program issued by the Department of Agriculture and Natural Resources.

The waste disposal site(s) will not be located in a wetland, within 200 feet of surface water, or in an area that adversely affects wildlife, recreation, aesthetic value of an area, or any threatened or endangered species, as approved by the Environmental Office and the Project Engineer.

If the waste disposal site(s) is located such that it is within view of any ROW, the following additional requirements will apply:

1. Construction and/or demolition debris consisting of concrete, asphalt concrete, or other similar materials will be buried in a trench separate from

wood debris. The final cover over the construction and/or demolition debris will consist of a minimum of 1 foot of soil capable of supporting vegetation.

Waste disposal sites provided outside of the Public ROW will be seeded in accordance with Natural Resources Conservation Service recommendations. The seeding recommendations may be obtained through the appropriate County NRCS Office. The Contractor will control the access to waste disposal sites not within the Public ROW with fences, gates, and placement of a sign or signs at the entrance to the site stating, "No Dumping Allowed".

2. Concrete and asphalt concrete debris may be stockpiled within view of the ROW for a period not to exceed the duration of the project. Prior to project completion, the waste will be removed from view of the ROW or buried, and the waste disposal site reclaimed as noted above.

The above requirements will not apply to waste disposal sites that are covered by an individual solid waste permit as specified in SDCL 34A-6-58, SDCL 34A-6-1.13, and ARSD 74:27:10:06.

Failure to comply with the requirements stated above may result in civil penalties in accordance with South Dakota Solid Waste Law, SDCL 34A-6-1.31.

All costs associated with furnishing waste disposal site(s), disposing of waste, maintaining control of access (fence, gates, and signs), and reclamation of the waste disposal site(s) will be incidental to the various contract items.

COMMITMENT I: HISTORIC PRESERVATION OFFICE CLEARANCES

The SDDOT has obtained concurrence with the State Historic Preservation Office (SHPO or THPO) for all work included within the project limits and all department designated sources and designated option material sources, stockpile sites, storage areas, and waste sites provided within the plans.

Action Taken/Required:

All earth disturbing activities not designated within the plans require a cultural resource review prior to scheduling the pre-construction meeting. This work includes but is not limited to: Contractor furnished material sources, material processing sites, stockpile sites, storage areas, plant sites, and waste areas.

The Contractor will arrange and pay for a record search and when necessary, a cultural resource survey. The Contractor has the option to contact the state Archaeological Research Center (ARC) at 605-394-1936 or another qualified archaeologist, to obtain either a records search or a cultural resources survey. A record search might be sufficient for review if the site was previously surveyed; however, a cultural resources survey may need to be conducted by a qualified archaeologist.

The Contractor will provide ARC with the following: a topographical map or aerial view in which the site is clearly outlined, site dimensions, project number, and PCN. If applicable, provide evidence that the site has been previously disturbed by farming, mining, or construction activities with a landowner statement that artifacts have not been found on the site.

The Contractor will submit the cultural resources survey report to SDDOT Environmental Office, 700 East Broadway Avenue, Pierre, SD 57501-2586. SDDOT will submit the information to the appropriate SHPO/THPO. Allow **30 Days** from the date this information is submitted to the Environmental Engineer for SHPO/THPO review.

In the event of an inadvertent discovery of human remains, funerary objects, or if evidence of cultural resources is identified during project construction activities, then such activities within 150 feet of the inadvertent discovery will immediately cease and the Project Engineer will be immediately notified. The Project Engineer will contact the SDDOT Environmental Office, who will contact the appropriate SHPO/THPO within 48 hours of the discovery to determine an appropriate course of action.

SHPO review does not relieve the Contractor of the responsibility for obtaining any additional permits and clearances for Contractor furnished material sources, material processing sites, stockpile sites, storage areas, plant sites, and waste areas that affect wetlands, threatened and endangered species, or waterways. The Contractor will not utilize a site known or suspected of having contaminated soil or water. The Contractor will provide the required permits and clearances to the Project Engineer at the preconstruction meeting.

COMMITMENT L: CONTAMINATED MATERIAL

Contaminated soil and/or known gas stations, undergrounds storage tanks, etc. are located within the project limits. Petroleum contaminated soil may be located at the following sites:

Description	Station	L / R
2022 100 gal Diesel & Antifreeze	323+00	L
2023 40 gal Diesel Spill	472+00	L

Action Taken/Required:

The Contractor will give notice to the Engineer if contaminated soil is encountered on the project. The Engineer will contact the Environmental Office so that contact with the DANR and consultant to inspect and monitor removal of any contaminated soil can be initiated.

The Contractor will be responsible for having the existing underground utilities located in the construction area. Underground utilities damaged by the Contractor due to negligence will be repaired at the Contractor's expense.

Petroleum contaminated soil may be disposed of at the Watertown Regional Landfill. Measurement of "Contaminated Material Excavation" will be in accordance with Section 120.4 of the Specifications. All costs for excavating and transporting the contaminated materials to the disposal site and all fees charged per cubic yard by the disposal site will be incidental to the contract unit price per cubic yard for "Contaminated Material Excavation".

The estimated quantity of "Contaminated Material Excavation" is 100 cubic yards. The quantity of "Contaminated Material Excavation" may vary from the plans. No adjustment will be made to the contract unit price for variations in the quantity of "Contaminated Material Excavation". The estimated quantity of "Contaminated Material Excavation" is provided in Section B – Grading Plans.

COMMITMENT M: SECTION 4(f)/6(f) RESOURCES

COMMITMENT M1: SECTION 4(f) PROPERTY

Table of Adjacent Section 4(f) Property

Station	Section 4(f) Property
297+00 – 300+00 (L/R)	Railroad Grade (39CK2003)
144+75 – 148+00 R	ESS 1

Action Taken/Required:

The following measures are required to minimize harm to the above Section 4(f) property:

The contractor will notify the Project Engineer if additional temporary or permanent easement is necessary to construct the project. Temporary occupancy and permanent incorporation of, and restriction of access to, the Section 4(f) property must be avoided unless there are no feasible or prudent alternatives to use of the land and the action includes all possible planning to minimize harm to the property. The Project Engineer will notify the Environmental Office as Section 4(f) use must be approved by the Federal Highway Administration.

A Section 4(f) Evaluation concluded there are no feasible and prudent alternatives to avoiding Section 4(f) property located within the project.

Station	Section 4(f) Property
106+50 – 115+50 R	Armbruster Game Production Area
109+25 – 119+50 R	Ash-Moe Waterfowl Production Area
325+10 – 345+10 R	Geidd Waterfowl Production Area
490+00 – 503+45 L	Swan Lake Game Production Area

Action Taken/Required:

The following measures are required to minimize harm to the above Section 4(f) property:

All earth disturbing activities not designated within the plans must be approved by the SDDOT Environmental Office prior to taking place.

The Contractor is not permitted to stage equipment or materials within the listed properties. The Contractor will notify the Project Engineer if additional easement is needed to complete the work adjacent to any Section 4(f) property. The Project Engineer will obtain an appropriate course of action from the Environmental Office before proceeding with construction activities that affect any Section 4(f) property.

COMMITMENT N: SECTION 404 PERMIT

The SDDOT has obtained a Section 404 Permit from the USACE for the permanent actions associated with this project.

Action Taken/Required:

The Contractor will comply with all requirements contained in the Section 404 Permit.

The Contractor will also be responsible for obtaining a Section 404 Permit for any dredge, excavation, or fill activities associated with material sources, storage areas, waste sites, and Contractor work sites outside the plan work limits that affect wetlands, floodplains, or waters of the United States.

COMMITMENT Q: ARCHAEOLOGICAL COORDINATION

As a result of a Cultural Resources Survey, historic properties have been identified adjacent to the project rights-of-way.

The following historic properties have been identified that require avoidance of construction activities:

Table of Historic Properties

Station	Offset (Ft.)	L/R	Environmental Sensitive Site	Action
144+75 – 148+00	140	R	ESS 1	Do Not Disturb
297+00 – 300+00	150	L/R	Railroad Grade (39CK2003)	Do Not Disturb

Action Taken/Required:

If evidence for cultural resources is uncovered during project construction activities, then such activities within 150 feet of the inadvertent discovery will immediately cease and the Project Engineer will be immediately notified. The Project Engineer will contact the SDDOT Environmental Office, who will consult with the Archaeological Research Center (ARC), the SHPO, and FHWA to determine the appropriate course of action.

All artifacts, features, or other items of interest uncovered by project construction activities will not be displaced unless the landowner and the SHPO consent to it.