

# SECTION M: PAVEMENT MARKING PLANS

STATE OF SOUTH DAKOTA	PROJECT	SHEET	TOTAL SHEETS
	P-PH-PT 0025(81)158	M1	M9

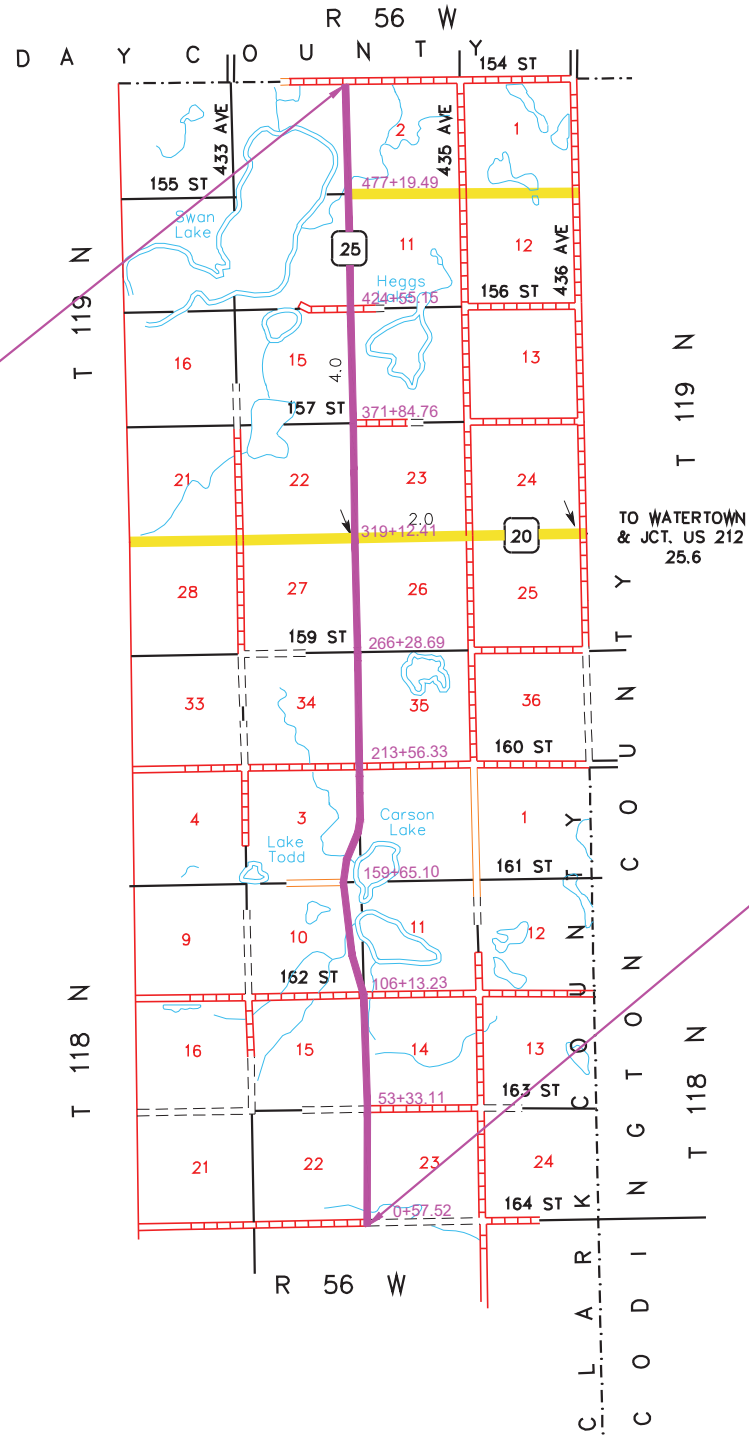
Plotting Date: 08-09-2024

## INDEX OF SHEETS

M1	Title Sheet
M2	Estimate of Quantities and General Notes
M3-M7	Pavement Marking Layouts
M8-M9	Special Detail & Standard Plates



END P-PH-PT 0025(81)158  
END GRADING AND INTERIM SURFACING  
 Station 529+20



BEGIN P-PH-PT 0025(81)158  
BEGIN GRADING AND INTERIM SURFACING  
 Station 0+50



**SECTION M ESTIMATE OF QUANTITIES**

BAI JOB # 23190-12

STATE OF SOUTH DAKOTA	PROJECT	SHEET	TOTAL SHEETS
	P-PH-PT 0025(81)158	M2	M9

Plotting Date: 08-09-2024

If the Department chooses to take readings, the minimum retroreflectivity values will be 275 mc/m<sup>2</sup>/lux for white and 170 mc/m<sup>2</sup>/lux for yellow.

BID ITEM NUMBER	ITEM	QUANTITY	UNIT
633E1200	High Build Waterborne Pavement Marking Paint, White	566	Gal
633E1205	High Build Waterborne Pavement Marking Paint, Yellow	166	Gal
633E1272	High Build Waterborne Pavement Marking Paint, Arrow	6	Each

**PAVEMENT MARKING PAINT**

All materials will be applied as per the manufacturer's recommendations.

The Contractor will advise the Engineer a minimum of 3 weeks prior to the application of the permanent pavement marking to allow the State to check and mark the location of no passing zones.

The application of permanent pavement marking will begin no sooner than 7 calendar days following completion of the final surfacing. Application of permanent pavement marking will be completed within 14 calendar days following the completion of the interim surfacing.

**HIGH BUILD WATERBORNE PAVEMENT MARKING PAINT**

All materials will be applied as per manufacturer's recommendations. High build waterborne pavement marking paint will conform to the supplemental specifications for Section 980.1 B.

Reflective media consisting of glass beads.

**RATES OF MATERIALS FOR HIGH BUILD WATERBORNE PAVEMENT MARKING PAINT**

Solid 4" line = 27.8 Gals/Mile  
Dashed 4" line = 7.6 Gal/Mile  
Solid 24" line = 166.8 Gal/Mile  
Glass Beads = 8 Lbs/Gal.

All cost for materials, labor and equipment necessary to furnish and install the pavement markings will be incidental to the contract unit price for the respective High Build Waterborne Pavement Marking Paint items.

**RETROREFLECTIVITY FOR PAVEMENT MARKING PAINT**

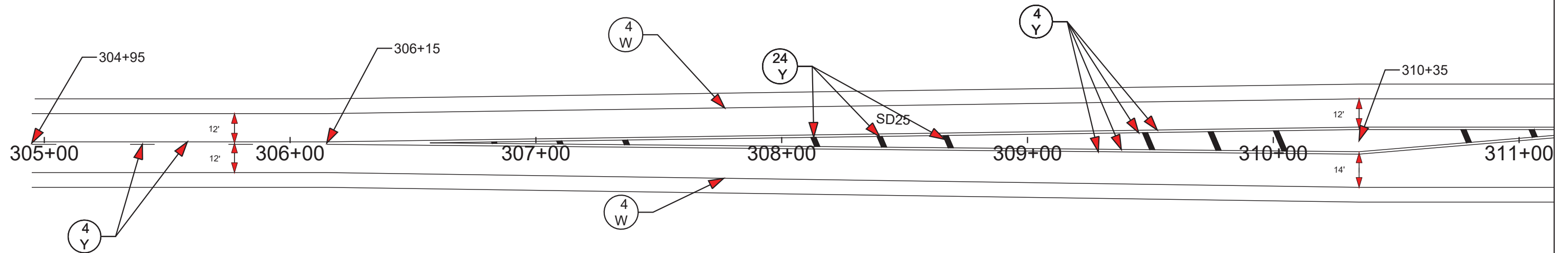
The Department may take retroreflectivity readings on the pavement marking lines after 2 days and within 30 days of the line application using either a portable or mobile retroreflectometer that conforms to 30-meter geometry. If the Department chooses to take retroreflectivity readings, three retroreflectivity readings will be taken on each line at each test location. The three readings will be averaged and become the reading for that test location.

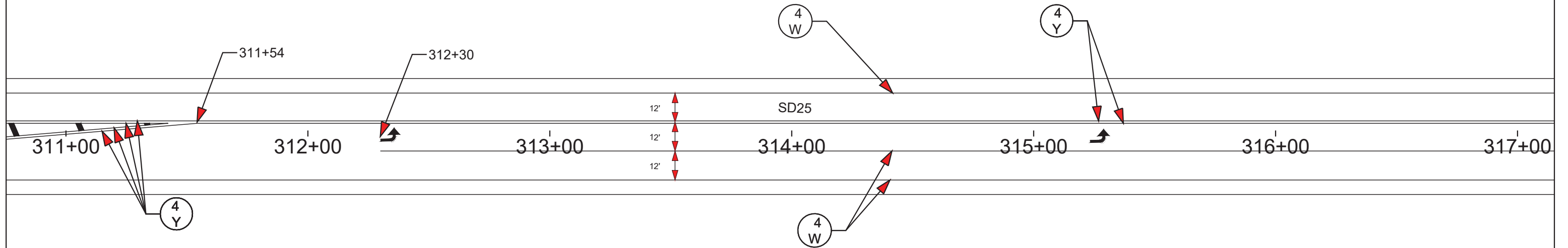
If the Department chooses to take retroreflectivity readings, three readings will be taken on the edge lines and lane lines in the direction of application. For combination solid yellow and skip yellow lines for turn lanes and for centerline markings on two-way roadways, three readings will be taken in one direction, the reflectometer will be turned 180 degrees and three more readings will be taken. The six readings for the centerline markings will be averaged and become the test reading for that test location.

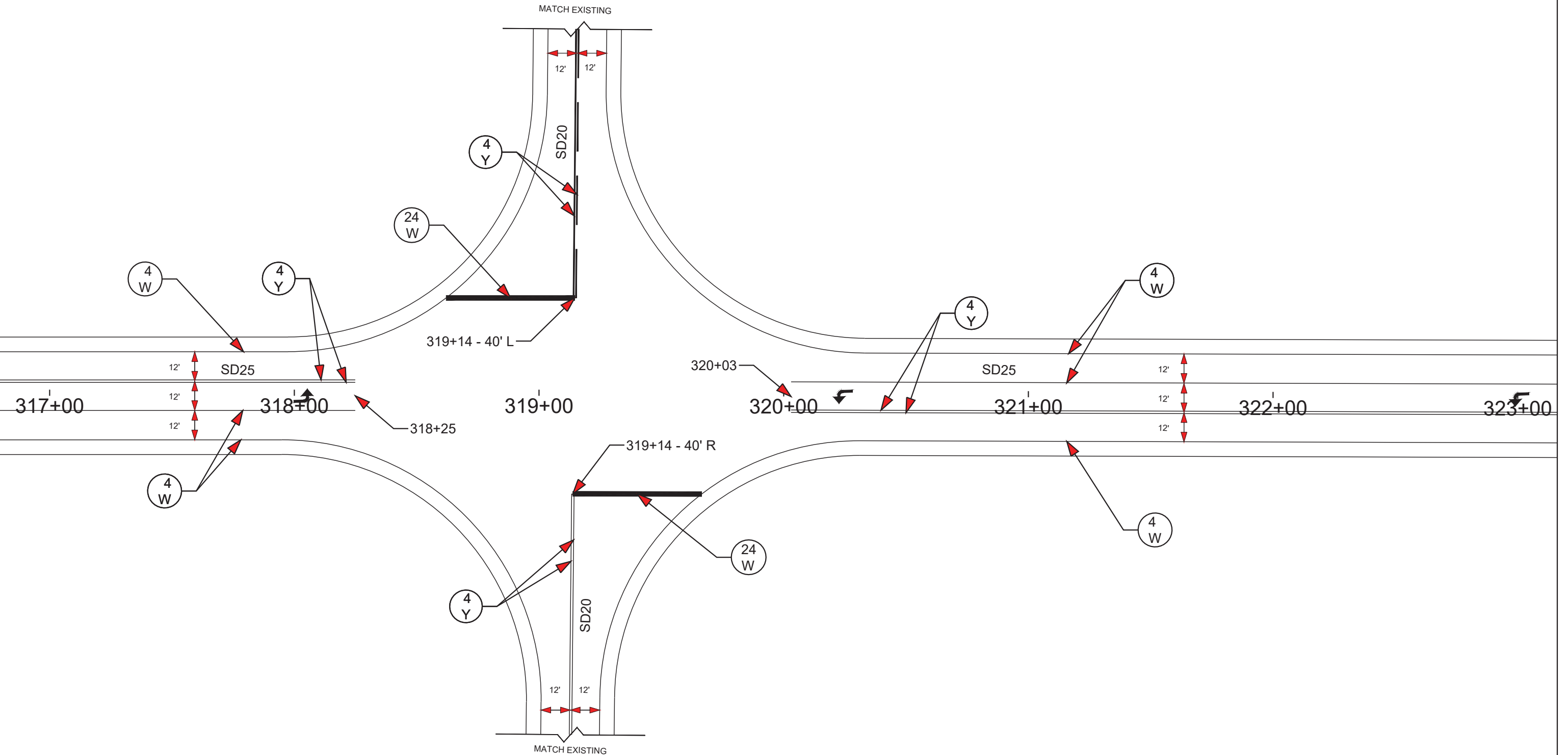


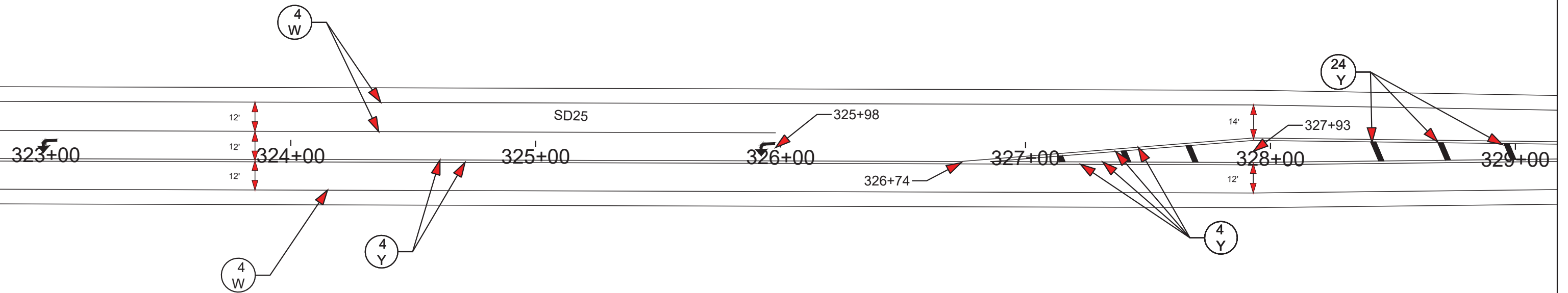


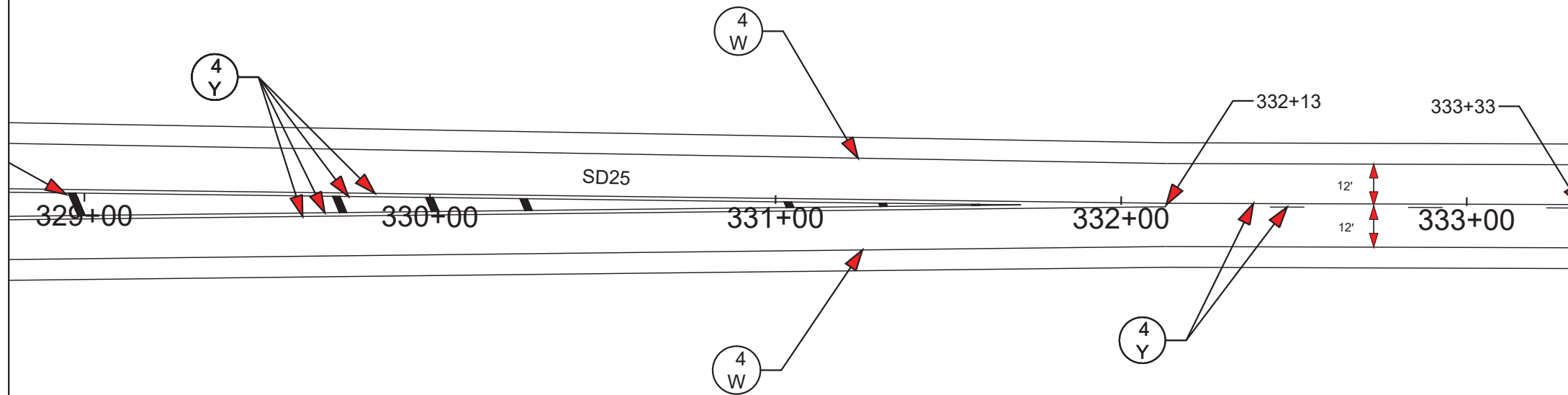
PAVEMENT MARKING LEGEND	
KEY	ITEM
(4 W)	High Build Waterborne Pavement Marking Paint, White - 4"
(4 Y)	High Build Waterborne Pavement Marking Paint, Yellow - 4"
(24 W)	High Build Waterborne Pavement Marking Paint, White - 24"
(24 Y)	High Build Waterborne Pavement Marking Paint, Yellow - 24"
↗	High Build Waterborne Pavement Marking Paint, Arrow





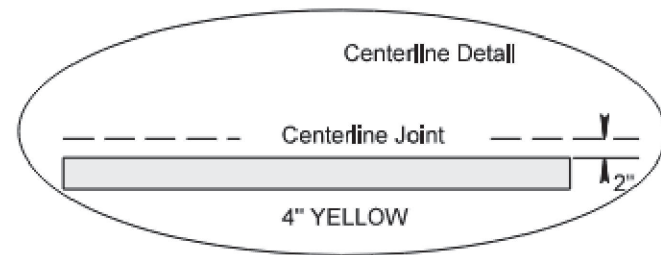
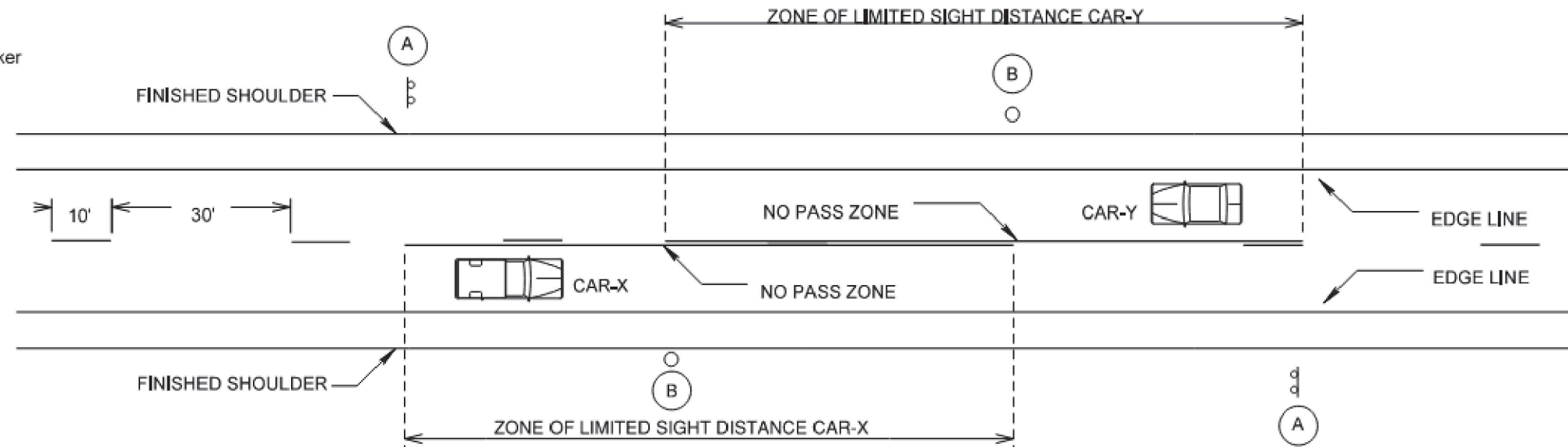








(B) End of Zone Marker



NOTE: A TWO "GUN" SYSTEM WILL BE USED TO OBTAIN THIS PATTERN.

WHEN A SINGLE SKIP LINE EXISTS, THE SKIP WILL BE PLACED TO THE SOUTH OR EAST OF THE CENTERLINE JOINT.

