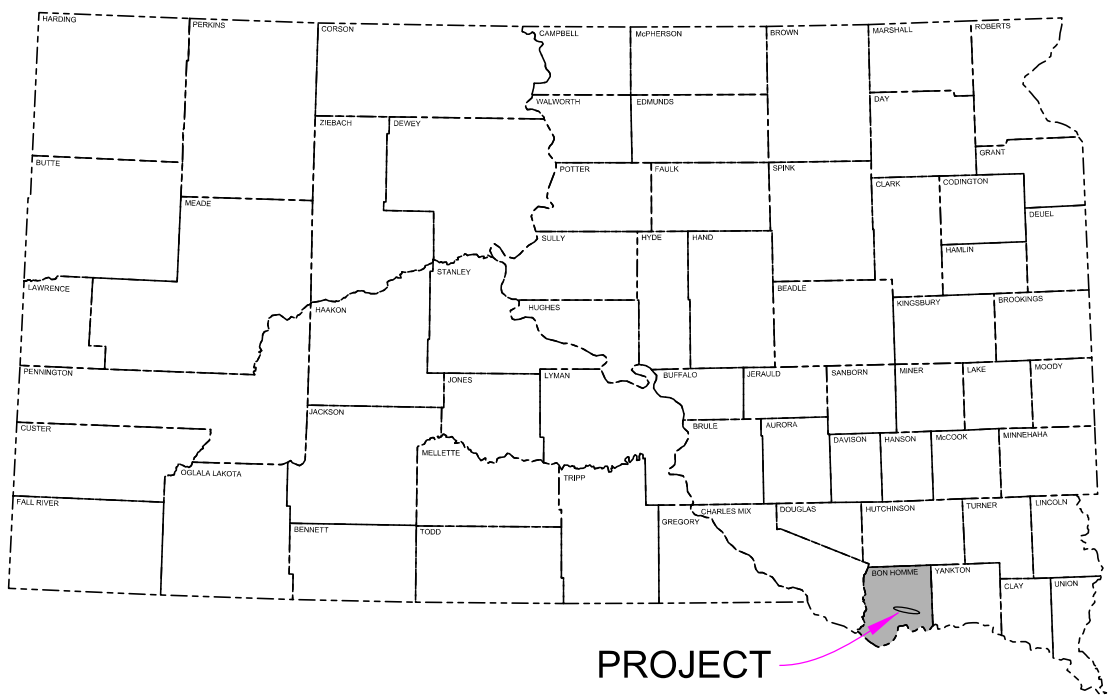


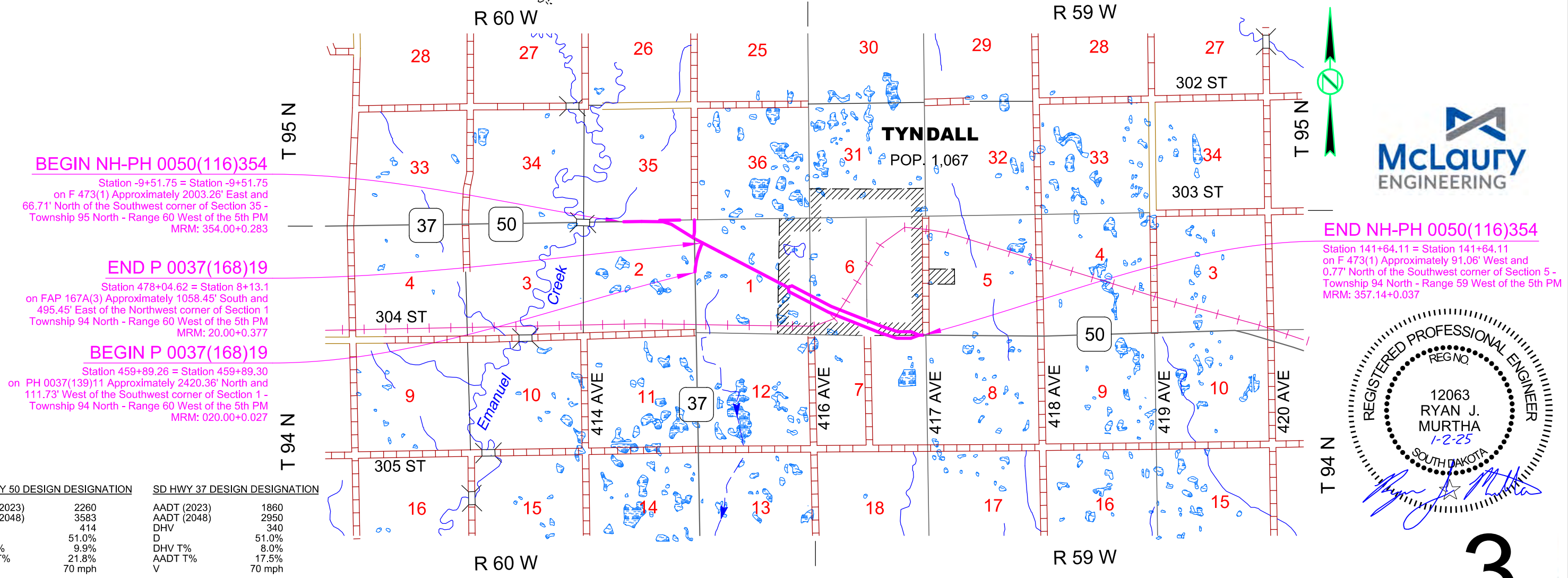
PLANS FOR PROPOSED  
**PROJECT NH-PH 0050(116)354  
& P 0037(168)19**  
**SD HIGHWAYS 50 & 37**  
**BON HOMME COUNTY**  
GRADING, CURB & GUTTER,  
AC SURFACING, STRUCTURES, & LIGHTING  
PCN 04K7 & 080L

INDEX OF SECTIONS

Section A:	Estimate of Quantities and Environmental Commitments
Section B:	Grading Plans
Section C:	Traffic Control Plans
Section D:	Erosion and Sediment Control Plans
Section E:	Structure Plans
Section F:	Surfacing Plans
Section L:	Signal and Lighting Plans
Section M:	Pavement Marking Plans
Section S:	Permanent Signing Plans
Section X:	Cross Sections
Section Z:	Pipe Sections



PROJECT



SD HWY 50 DESIGN DESIGNATION		SD HWY 37 DESIGN DESIGNATION	
AADT (2023)	2260	AADT (2023)	1860
AADT (2048)	3583	AADT (2048)	2950
DHV	414	DHV	340
D	51.0%	D	51.0%
DHV T%	9.9%	DHV T%	8.0%
AADT T%	21.8%	AADT T%	17.5%
V	70 mph	V	70 mph

**STORM WATER PERMIT**  
Major Receiving  
Body of Water: Emanuel Creek and Silver Creek  
Area Disturbed: 73.3 acres  
Total Project Area: 86.8 acres  
Approx. Begin Lat,Long: 42.9958, -97.9100

	PCN 04K7		PCN 080L	
Gross Length	15,359.29 Feet	2.909 Miles	1,899.57 Feet	0.360 Miles
Length of Exceptions	0 Feet	0 Miles	0 Feet	0 Miles
Net Length	15,359.29 Feet	2.909 Miles	1,899.57 Feet	0.360 Miles

ESTIMATE OF QUANTITIES AND ENVIRONMENTAL COMMITMENTS

FOR BIDDING PURPOSES ONLY

STATE OF SOUTH DAKOTA	PROJECT	SHEET	TOTAL SHEETS
	NH-PH 0050(116)354 P 0037 (168)19	A1	A6

Plotting Date: 1/2/2025 Rev 9/16/2025 RJM

Grading – Section B  
PCN 04K7

BID ITEM NUMBER	ITEM	QUANTITY	UNIT
009E0010	Mobilization	Lump Sum	LS
009E3220	Reestablish Right-of-Way and Property Corner	51	Each
009E3225	Reestablish Public Land Survey System Corner	2	Each
009E3230	Grade Staking	7.786	Mile
009E3250	Miscellaneous Staking	3.875	Mile
009E3280	Slope Staking	3.875	Mile
009E3290	Structure Staking	1	Each
009E3301	Engineer Directed Surveying/Staking	40.0	Hour
009E4300	Construction Schedule, Category III	Lump Sum	LS
110E0300	Remove Concrete Curb and/or Gutter	470	Ft
110E0600	Remove Fence	15,850	Ft
110E1100	Remove Concrete Pavement	68,813.3	SqYd
110E1130	Remove Concrete Driveway Pavement	476.8	SqYd
110E7040	Remove Gate for Reset	1	Each
120E0010	Unclassified Excavation	226,203	CuYd
120E1000	Muck Excavation	1,838	CuYd
120E2000	Undercutting	8,655	CuYd
120E6100	Water for Embankment	288.0	MGal
120E6200	Water for Granular Material	707.0	MGal
240E0010	Obliterate Old Road	7	Sta
250E0020	Incidental Work, Grading	Lump Sum	LS
260E4500	Processed Subgrade Topping	70,670	CuYd
260E6010	Granular Material	120.0	Ton
270E0020	Salvage and Stockpile Asphalt Mix Material	8,545.3	Ton
270E0022	Salvage Asphalt Mix Material	23,169.0	Ton
380E2554	4" Barrier Type Median PCC Pavement	256.9	SqYd
380E3540	8" PCC Approach Pavement	20.0	SqYd
380E4050	8" PCC Fillet Section	11.4	SqYd
421E0100	Pipe Culvert Undercut	311	CuYd
450E0122	18" RCP Class 2, Furnish	1,070	Ft
450E0130	18" RCP, Install	1,070	Ft
450E0142	24" RCP Class 2, Furnish	92	Ft
450E0150	24" RCP, Install	92	Ft
450E0162	30" RCP Class 2, Furnish	100	Ft
450E0170	30" RCP, Install	100	Ft
450E0262	84" RCP Class 2, Furnish	102	Ft
450E0270	84" RCP, Install	102	Ft
450E2060	84" RCP Flared End, Furnish	2	Each
450E2061	84" RCP Flared End, Install	2	Each
450E2204	30" RCP Sloped End, Furnish	2	Each
450E2205	30" RCP Sloped End, Install	2	Each
450E2304	18" RCP Safety End, Furnish	38	Each
450E2307	18" RCP Safety End, Install	38	Each

Grading – Section B (Continued)  
PCN 04K7 (Continued)

BID ITEM NUMBER	ITEM	QUANTITY	UNIT
450E2308	24" RCP Safety End, Furnish	2	Each
450E2311	24" RCP Safety End, Install	2	Each
450E3002	18" RCP Arch Class 2, Furnish	272	Ft
450E3004	18" RCP Arch Class 4, Furnish	382	Ft
450E3010	18" RCP Arch, Install	654	Ft
450E3022	30" RCP Arch Class 2, Furnish	316	Ft
450E3030	30" RCP Arch, Install	316	Ft
450E3032	36" RCP Arch Class 2, Furnish	92	Ft
450E3040	36" RCP Arch, Install	92	Ft
450E3042	42" RCP Arch Class 2, Furnish	464	Ft
450E3050	42" RCP Arch, Install	464	Ft
450E4604	30" RCP Arch Sloped End, Furnish	6	Each
450E4605	30" RCP Arch Sloped End, Install	6	Each
450E4606	36" RCP Arch Sloped End, Furnish	2	Each
450E4607	36" RCP Arch Sloped End, Install	2	Each
450E4608	42" RCP Arch Sloped End, Furnish	8	Each
450E4609	42" RCP Arch Sloped End, Install	8	Each
450E4650	18" RCP Arch Safety End, Furnish	17	Each
450E4653	18" RCP Arch Safety End, Install	17	Each
450E4759	18" CMP 16 Gauge, Furnish	362	Ft
450E4760	18" CMP, Install	362	Ft
450E4769	24" CMP 16 Gauge, Furnish	62	Ft
450E4770	24" CMP, Install	62	Ft
450E4779	30" CMP 16 Gauge, Furnish	62	Ft
450E4780	30" CMP, Install	62	Ft
450E4789	36" CMP 16 Gauge, Furnish	84	Ft
450E4790	36" CMP, Install	84	Ft
450E5406	18" CMP Safety End, Furnish	12	Each
450E5407	18" CMP Safety End, Install	12	Each
450E5410	24" CMP Safety End, Furnish	2	Each
450E5411	24" CMP Safety End, Install	2	Each
450E5414	30" CMP Safety End, Furnish	2	Each
450E5417	30" CMP Safety End, Install	2	Each
450E5420	36" CMP Safety End, Furnish	2	Each
450E5423	36" CMP Safety End, Install	2	Each
450E5509	18" CMP Arch 16 Gauge, Furnish	132	Ft
450E5510	18" CMP Arch, Install	132	Ft
450E5529	30" CMP Arch 16 Gauge, Furnish	56	Ft
450E5530	30" CMP Arch, Install	56	Ft
450E6006	18" CMP Arch Safety End, Furnish	6	Each
450E6007	18" CMP Arch Safety End, Install	6	Each
450E6014	30" CMP Arch Safety End, Furnish	2	Each
450E6017	30" CMP Arch Safety End, Install	2	Each

Grading – Section B (Continued)  
PCN 04K7 (Continued)

BID ITEM NUMBER	ITEM	QUANTITY	UNIT
451E0522	12" PVC Pipe	20	Ft
451E3012	12" Pipe Bend	1	Each
462E0100	Class M6 Concrete	111.3	CuYd
464E0100	Controlled Density Fill	3.1	CuYd
480E0100	Reinforcing Steel	19,033	Lb
600E0300	Type III Field Laboratory	1	Each
620E0020	Type 2 Right-of-Way Fence	13,466	Ft
620E0060	Type 6 Right-of-Way Fence	2,384	Ft
620E0510	Type 1 Temporary Fence	1,690	Ft
620E0520	Type 2 Temporary Fence	161	Ft
620E1020	2 Post Panel	16	Each
620E1030	3 Post Panel	28	Each
620E2100	Reset Gate	1	Each
650E0080	Type B68 Concrete Curb and Gutter	359	Ft
650E1080	Type F68 Concrete Curb and Gutter	12,224	Ft
650E1560	Type R48 Concrete Curb and Gutter	240	Ft
650E4680	Type P8 Concrete Gutter	24	Ft
670E1200	Type B Frame and Grate	10	Each
670E5340	4' x 11' Precast Concrete Type S Drop Inlet Lid	27	Each
670E5400	Precast Drop Inlet Collar	10	Each
900E0010	Refurbish Single Mailbox	3	Each
900E1080	Orange Plastic Safety Fence	200	Ft

INDEX OF SHEETS

A1 and A3 Estimate of Quantities for Sections B,C,D,E, F, L, M, and S  
A4 to A6 Environmental Commitments

SPECIFICATIONS

Standard Specifications for Roads and Bridges, 10-1-25 Version, Required Provisions, and Special Provisions as included in the Proposal. The Standard Specifications for Roads and Bridges is available for download and viewing at <https://dot.sd.gov/doing-business/contractors/standard-specifications>.



ESTIMATE OF QUANTITIES AND ENVIRONMENTAL COMMITMENTS

FOR BIDDING PURPOSES ONLY

STATE OF SOUTH DAKOTA	PROJECT	SHEET	TOTAL SHEETS
	NH-PH 0050(116)354 P 0037 (168)19	A2	A6

Plotting Date: 1/2/20259/16/2025 RJM

Grading – Section B  
PCN 080L

BID ITEM NUMBER	ITEM	QUANTITY	UNIT
009E0010	Mobilization	Lump Sum	LS
009E3220	Reestablish Right-of-Way and Property Corner	17	Each
009E3225	Reestablish Public Land Survey System Corner	1	Each
009E3230	Grade Staking	0.363	Mile
009E3250	Miscellaneous Staking	0.344	Mile
009E3280	Slope Staking	0.344	Mile
009E3301	Engineer Directed Surveying/Staking	40.0	Hour
009E4300	Construction Schedule, Category III	Lump Sum	LS
110E0600	Remove Fence	835	Ft
120E0010	Unclassified Excavation	13,884	CuYd
120E2000	Undercutting	2,185	CuYd
120E6100	Water for Embankment	246.0	MGal
240E0010	Obliterate Old Road	9	Sta
250E0020	Incidental Work, Grading	Lump Sum	LS
260E6010	Granular Material	120.0	Ton
270E0022	Salvage Asphalt Mix Material	2,564.3	Ton
270E0112	Salvage Granular Material	2,121.6	Ton
450E0142	24" RCP Class 2, Furnish	260	Ft
450E0150	24" RCP, Install	260	Ft
450E2200	24" RCP Sloped End, Furnish	4	Each
450E2201	24" RCP Sloped End, Install	4	Each
450E2308	24" RCP Safety End, Furnish	1	Each
450E2311	24" RCP Safety End, Install	1	Each
450E3012	24" RCP Arch Class 2, Furnish	52	Ft
450E3020	24" RCP Arch, Install	52	Ft
450E4600	24" RCP Arch Sloped End, Furnish	1	Each
450E4601	24" RCP Arch Sloped End, Install	1	Each
450E4759	18" CMP 16 Gauge, Furnish	164	Ft
450E4760	18" CMP, Install	164	Ft
450E5406	18" CMP Safety End, Furnish	4	Each
450E5407	18" CMP Safety End, Install	4	Each
462E0100	Class M6 Concrete	2.0	CuYd
480E0100	Reinforcing Steel	281	Lb
620E0020	Type 2 Right-of-Way Fence	835	Ft
620E1030	3 Post Panel	2	Each
670E5202	Special Frame and Grate	1	Each
670E5400	Precast Drop Inlet Collar	1	Each
900E0010	Refurbish Single Mailbox	1	Each

Traffic Control – Section C  
PCN 04K7

BID ITEM NUMBER	ITEM	QUANTITY	UNIT
120E0600	Contractor Furnished Borrow Excavation	818	CuYd
260E1080	Base Course, Salvaged, State Furnished	3,320.0	Ton
320E1200	Asphalt Concrete Composite	1,440.0	Ton
634E0010	Flagging	600.0	Hour
634E0020	Pilot Car	300.0	Hour
634E0110	Traffic Control Signs	870.9	SqFt
634E0120	Traffic Control, Miscellaneous	Lump Sum	LS
634E0135	Traffic Control Supervisor	Lump Sum	LS
634E0275	Type 3 Barricade	22	Each
634E0380	Tubular Marker	380	Each
634E0600	4" Temporary Pavement Marking Tape Type I	72	Ft
634E0630	Temporary Pavement Marking	8.7	Mile
634E1002	Detour and Restriction Signing	261.9	SqFt

PCN 080L

BID ITEM NUMBER	ITEM	QUANTITY	UNIT
634E0010	Flagging	200.0	Hour
634E0020	Pilot Car	100.0	Hour
634E0110	Traffic Control Signs	285.0	SqFt
634E0120	Traffic Control, Miscellaneous	Lump Sum	LS
634E0135	Traffic Control Supervisor	Lump Sum	LS
634E0275	Type 3 Barricade	6	Each
634E0630	Temporary Pavement Marking	1.7	Mile

Erosion and Sediment Control – Section D  
PCN 04K7

BID ITEM NUMBER	ITEM	QUANTITY	UNIT
110E1690	Remove Sediment	9.3	CuYd
110E1693	Remove Erosion Control Wattle	400	Ft
110E1695	Remove Sediment Filter Bag	1,784	Ft
110E1700	Remove Silt Fence	730	Ft
230E0010	Placing Topsoil	23,856	CuYd
730E0100	Cover Crop Seeding	45.0	Bu
730E0206	Type D Permanent Seed Mixture	2,224	Lb
730E0212	Type G Permanent Seed Mixture	963	Lb
731E0200	Fertilizing	20.70	Ton
732E0100	Mulching	88.7	Ton
734E0044	Soil Stabilizer	13.0	Acre
734E0103	Type 3 Erosion Control Blanket	40,089	SqYd
734E0154	12" Diameter Erosion Control Wattle	1,600	Ft
734E0165	Remove and Reset Erosion Control Wattle	400	Ft
734E0180	Sediment Filter Bag	1,784	Ft
734E0185	Remove and Reset Sediment Filter Bag	268	Ft
734E0325	Surface Roughening	13.0	Acre
734E0510	Shaping for Erosion Control Blanket	20,701	Ft
734E0602	Low Flow Silt Fence	2,680	Ft
734E0604	High Flow Silt Fence	2,920	Ft
734E0610	Mucking Silt Fence	203	CuYd
734E0620	Repair Silt Fence	730	Ft
734E0845	Sediment Control at Inlet with Frame and Grate	9	Each
734E0847	Sediment Control at Type S Reinforced Concrete Drop Inlet	364	Ft
900E1320	Construction Entrance	1	Each

PCN 080L

BID ITEM NUMBER	ITEM	QUANTITY	UNIT
110E1690	Remove Sediment	0.3	CuYd
110E1693	Remove Erosion Control Wattle	50	Ft
110E1695	Remove Sediment Filter Bag	24	Ft
110E1700	Remove Silt Fence	161	Ft
230E0010	Placing Topsoil	2,304	CuYd
730E0100	Cover Crop Seeding	4.0	Bu
730E0212	Type G Permanent Seed Mixture	112	Lb
731E0200	Fertilizing	2.10	Ton
732E0100	Mulching	8.6	Ton
734E0044	Soil Stabilizer	2.0	Acre
734E0103	Type 3 Erosion Control Blanket	2,636	SqYd
734E0154	12" Diameter Erosion Control Wattle	200	Ft
734E0165	Remove and Reset Erosion Control Wattle	50	Ft
734E0180	Sediment Filter Bag	24	Ft
734E0185	Remove and Reset Sediment Filter Bag	4	Ft
734E0325	Surface Roughening	2.0	Acre
734E0510	Shaping for Erosion Control Blanket	1,244	Ft
734E0604	High Flow Silt Fence	644	Ft
734E0610	Mucking Silt Fence	45	CuYd
734E0620	Repair Silt Fence	161	Ft
734E0845	Sediment Control at Inlet with Frame and Grate	1	Each





ESTIMATE OF QUANTITIES AND ENVIRONMENTAL COMMITMENTS

FOR BIDDING PURPOSES ONLY

STATE OF SOUTH DAKOTA	PROJECT	SHEET	TOTAL SHEETS
	NH-PH 0050(116)354 P 0037 (168)19	A3	A6

Plotting Date: 1/2/2025 Rev 2/13/2025 RJM

Structure 05-159-130 – Section E

PCN 04K7 – Alternate A

BID ITEM NUMBER	ITEM	QUANTITY	UNIT
420E0200	Structure Excavation, Box Culvert	47	CuYd
421E0200	Box Culvert Undercut	178	CuYd
460E0120	Class A45 Concrete, Box Culvert	108.5	CuYd
480E0100	Reinforcing Steel	26,623	Lb
700E0110	Class A Riprap	25.2	Ton
831E0110	Type B Drainage Fabric	39	SqYd

PCN 04K7 – Alternate B

BID ITEM NUMBER	ITEM	QUANTITY	UNIT
420E0200	Structure Excavation, Box Culvert	43	CuYd
421E0200	Box Culvert Undercut	166	CuYd
560E0182	12'x5' Precast Concrete Box Culvert, Furnish	96.0	Ft
560E0183	12'x5' Precast Concrete Box Culvert, Install	96.0	Ft
560E1182	12'x5' Precast Concrete Box Culvert End Section, Furnish	2	Each
560E1183	12'x5' Precast Concrete Box Culvert End Section, Install	2	Each
700E0110	Class A Riprap	25.2	Ton
831E0110	Type B Drainage Fabric	39	SqYd

Surfacing – Section F

PCN 04K7

BID ITEM NUMBER	ITEM	QUANTITY	UNIT
009E3320	Checker	Lump Sum	LS
120E6200	Water for Granular Material	881.7	MGal
260E1030	Base Course, Salvaged	34,376.0	Ton
260E1080	Base Course, Salvaged, State Furnished	39,087.4	Ton
260E6000	Granular Material, Furnish	15,066.4	Ton
270E0220	Blend and Stockpile Granular Material	34,376.0	Ton
320E0005	PG 58-34 Asphalt Binder	1,703.8	Ton
320E1203	Class Q3R Hot Mixed Asphalt Concrete	36,613.3	Ton
320E4000	Hydrated Lime	361.8	Ton
320E7012	Grind 12" Rumble Strip or Stripe in Asphalt Concrete	3.2	Mile
330E0010	MC-70 Asphalt for Prime	65.8	Ton
330E0100	SS-1h or CSS-1h Asphalt for Tack	79.8	Ton
330E0210	SS-1h or CSS-1h Asphalt for Flush Seal	0.6	Ton
330E1000	Blotting Sand for Prime	433.2	Ton
380E3040	8" PCC Driveway Pavement	804.5	SqYd
900E1980	Storage Unit	1	Each

Surfacing – Section F

PCN 080L

BID ITEM NUMBER	ITEM	QUANTITY	UNIT
009E3320	Checker	Lump Sum	LS
120E6200	Water for Granular Material	80.2	MGal
260E1080	Base Course, Salvaged, State Furnished	6,680.8	Ton
320E0005	PG 58-34 Asphalt Binder	128.4	Ton
320E1203	Class Q3R Hot Mixed Asphalt Concrete	2,761.2	Ton
320E4000	Hydrated Lime	27.2	Ton
320E7012	Grind 12" Rumble Strip or Stripe in Asphalt Concrete	0.7	Mile
330E0010	MC-70 Asphalt for Prime	5.6	Ton
330E0100	SS-1h or CSS-1h Asphalt for Tack	6.9	Ton
330E0210	SS-1h or CSS-1h Asphalt for Flush Seal	0.1	Ton
330E1000	Blotting Sand for Prime	24.1	Ton

Signal and Lighting – Section L

PCN 04K7

BID ITEM NUMBER	ITEM	QUANTITY	UNIT
635E0040	Breakaway Base Luminaire Pole with Arm, 40' Mounting Height	24	Each
635E3700	Roadway Luminaire, LED with Photoelectric Cell	24	Each
635E5020	2" Diameter Footing	168.0	Ft
635E5301	Type 1 Electrical Junction Box	3	Each
635E5400	Electrical Service Cabinet	1	Each
635E8120	2" Rigid Conduit, Schedule 40	6,770	Ft
635E8220	2" Rigid Conduit, Schedule 80	755	Ft
635E9016	1/C #6 AWG Copper Wire	2,190	Ft
635E9018	1/C #8 AWG Copper Wire	22,050	Ft
635E9710	2/C #10 AWG Copper Pole and Bracket Cable	1,320	Ft

Pavement Marking – Section M

PCN 04K7

BID ITEM NUMBER	ITEM	QUANTITY	UNIT
633E1200	High Build Waterborne Pavement Marking Paint, White	231	Gal
633E1205	High Build Waterborne Pavement Marking Paint, Yellow	173	Gal

Pavement Marking – Section M

PCN 080L

BID ITEM NUMBER	ITEM	QUANTITY	UNIT
633E1200	High Build Waterborne Pavement Marking Paint, White	18	Gal
633E1205	High Build Waterborne Pavement Marking Paint, Yellow	5	Gal

Permanent Signing – Section S

PCN 04K7

BID ITEM NUMBER	ITEM	QUANTITY	UNIT
110E0100	Remove Concrete Footing(s)	Lump Sum	LS
110E0130	Remove Traffic Sign	122	Each
110E0135	Remove Delineator	28	Each
110E7150	Remove Sign for Reset	2	Each
632E1320	2.0"x2.0" Perforated Tube Post	236.5	Ft
632E1340	2.5"x2.5" Perforated Tube Post	333.6	Ft
632E2022	4"x4" White Delineator Back to Back with 1.12 Lb/Ft Post	16	Each
632E2028	4" Tubular White Delineator with 1.12 Lb/Ft Post	12	Each
632E2510	Type 2 Object Marker Back to Back	32	Each
632E3203	Flat Aluminum Sign, Nonremovable Copy High Intensity	420.1	SqFt
632E3205	Flat Aluminum Sign, Nonremovable Copy Super/Very High Intensity	97.6	SqFt
632E3500	Reset Sign	2	Each

PCN 080L

BID ITEM NUMBER	ITEM	QUANTITY	UNIT
110E0130	Remove Traffic Sign	9	Each
110E0135	Remove Delineator	3	Each
632E1320	2.0"x2.0" Perforated Tube Post	58.3	Ft
632E1340	2.5"x2.5" Perforated Tube Post	62.8	Ft
632E2022	4"x4" White Delineator Back to Back with 1.12 Lb/Ft Post	3	Each
632E3203	Flat Aluminum Sign, Nonremovable Copy High Intensity	94.6	SqFt
632E3205	Flat Aluminum Sign, Nonremovable Copy Super/Very High Intensity	14.2	SqFt



ENVIRONMENTAL COMMITMENTS

The SDDOT is committed to protecting the environment and uses Environmental Commitments as a communication tool for the Engineer and Contractor to ensure that attention is given to avoid, minimize, and/or mitigate an environmental impact. Environmental commitments to various agencies and the public have been made to secure approval of this project. An agency with permitting authority can delay a project if identified environmental impacts have not been adequately addressed. Unless otherwise designated, the Contractor's primary contact regarding matters associated with these commitments will be the Project Engineer. During construction, the Project Engineer will verify that the Contractor has met Environmental Commitment requirements. These environmental commitments are not subject to change without prior written approval from the SDDOT Environmental Office.

Additional guidance on SDDOT's Environmental Commitments can be accessed through the Environmental Procedures Manual found at: <<https://dot.sd.gov/media/documents/EnvironmentalProceduresManual.pdf>>

For questions regarding change orders in the field that may have an effect on an Environmental Commitment, the Project Engineer will contact the Environmental Engineer at 605-773-3180 or 605-773-4336 to determine whether an environmental analysis and/or resource agency coordination is necessary.

Once construction is complete, the Project Engineer will review all environmental commitments for the project and document their completion.

COMMITMENT A: AQUATIC RESOURCES

COMMITMENT A1: WETLANDS

All efforts to avoid and minimize wetland impacts from the project have resulted in approximately 1.608 acre of wetlands (includes temporary and permanent) becoming impacted. Refer to Section B – Grading plans for location and boundaries of the impacted wetlands.

Table of Impacted Wetlands

Wetland No.	Station	Perm. Impact Left (Acres)	Perm. Impact Right (Acres)	Temp. Impact Left (Acres)	Temp. Impact Right (Acres)	Total Impact (Acres)
WL 1	-8+50	0.000	0.000	0.025	0.000	0.025
WL 2	-5+00	0.000	0.000	0.039	0.045	0.084
WL 3	6+10	0.000	0.000	0.030	0.000	0.030
WL 4a	11+30	0.000	0.000	0.642	0.000	0.642
WL 4b	25+00	0.000	0.000	0.000	0.110	0.110
WL 4c	23+80	0.000	0.000	0.000	0.022	0.022
WL 5	58+80	0.000	0.000	0.000	0.040	0.040
WL 6a	97+00	0.000	0.000	0.068	0.000	0.068
WL 6b	98+89	0.000	0.000	0.011	0.000	0.011
WL 6c	99+70	0.027	0.026	0.000	0.000	0.053
WL 6d	100+00	0.000	0.000	0.000	0.004	0.004
WL 6e	99+40	0.000	0.000	0.000	0.003	0.003
WL 6f	96+50	0.000	0.000	0.000	0.046	0.046
WL 7a	114+20	0.042	0.000	0.072	0.000	0.042
WL 7b	116+30	0.000	0.000	0.000	0.012	0.012
WL 8	115+40	0.000	0.000	0.000	0.085	0.085
WL 9	135+30	0.000	0.000	0.167	0.092	0.259

Action Taken/Required:

Replacement of 0.042 acre(s) of permanent wetland impacts will be completed through another wetland mitigation opportunity in a manner which considers FHWA's program-wide goal of 'net gain' of wetlands through enhancement, creation, and preservation.

Temporary impacts identified in the Table of Impacted Wetlands will not be mitigated as original contours and elevations will be re-established. Prior to initiating temporary work in wetlands, the Contractor will submit a plan to the Project Engineer in accordance with Section 7.21 D of the Specifications.

The Contractor will notify the Project Engineer if additional easement is needed to complete work adjacent to any wetland. The Project Engineer will obtain an appropriate course of action from the Environmental Office before proceeding with construction activities that affect any wetlands beyond the work limits and easements shown in the plans.

COMMITMENT B: FEDERALLY THREATENED, ENDANGERED, AND PROTECTED SPECIES

COMMITMENT B2: WHOOPING CRANE

The Whooping Crane is a spring and fall migratory bird in South Dakota that is about 5 feet tall and typically stops on wetlands, rivers, and agricultural lands along their migration route. An adult Whooping Crane is white with a red crown and a long, dark, pointed bill. Immature Whooping Cranes are cinnamon brown. While in flight, their long necks are kept straight and their long dark legs trail behind. Adult Whooping Cranes' black wing tips are visible during flight.

Action Taken/Required:

Harassment or other measures to cause the Whooping Crane to leave the site is a violation of the Endangered Species Act. If a Whooping Crane is sighted roosting in the vicinity of the project, borrow pits, or staging areas associated with the project, cease construction activities in the affected area until the Whooping Crane departs and immediately contact the Project Engineer. The Project Engineer will contact the Environmental Office so that the sighting can be reported to USFWS.

COMMITMENT C: WATER SOURCE

The Contractor will not withdraw water with equipment previously used outside the State of South Dakota or previously used in aquatic invasive species (AIS) positive waters within South Dakota without prior approval from the SDDOT Environmental Office. To prevent and control the introduction and spread of invasive species into the project vicinity, all equipment will be power washed with hot water (≥140 °F) and completely dried for a minimum of 7 days prior to subsequent use. South Dakota administrative rule 41:10:04:02 forbids the possession and transport of AIS; therefore, all attached dirt, mud, debris and vegetation must be removed and all compartments and tanks capable of holding standing water must be drained. This includes, but is not limited to, all equipment, pumps, lines, hoses and holding tanks.

The Contractor will not withdraw water directly from streams of the James, Big Sioux, and Vermillion watersheds without prior approval from the SDDOT Environmental Office.

Action Taken/Required:

The Contractor will obtain the necessary permits from the regulatory agencies such as the South Dakota Department of Agriculture and Natural Resources (DANR) and the United States Army Corps of Engineers (USACE) prior to water extraction activities.

Additional information and mapping of water sources impacted by Aquatic Invasive Species in South Dakota can be accessed at:

< <http://sdleastwanted.com/maps/default.aspx> >

< [South Dakota Administrative Rule 41:10:04 Aquatic Invasive Species: https://sdlegislature.gov/rules/DisplayRule.aspx?Rule=41:10:04](https://sdlegislature.gov/rules/DisplayRule.aspx?Rule=41:10:04) >

STATE OF SOUTH DAKOTA	PROJECT	SHEET	TOTAL SHEETS
	NH-PH 0050(116)354 P 0037 (168)19	A5	A6

Plotting Date: 1/2/2025

COMMITMENT D: WATER QUALITY STANDARDS

COMMITMENT D1: SURFACE WATER QUALITY

The project is in the vicinity of multiple streams and wetlands. These waters are considered waters of the state and are protected under Administrative Rules of South Dakota (ARSD) Chapter 74:51. Special construction measures may have to be taken to ensure that this water body is not impacted..

Action Taken/Required:

The Contractor is advised that the South Dakota Surface Water Quality Standards, administered by the South Dakota Department of Agriculture and Natural Resources (DANR), apply to this project. Special construction measures will be taken to ensure the above standard(s) of the surface waters are maintained and protected.

COMMITMENT D2: SURFACE WATER DISCHARGE

The DANR General Permit for Temporary Discharge is required for temporary dewatering and discharges to waters of the state. The effluent limit for total suspended solids will be 90 mg/L 30-day average. The effluent limit applies to discharges to all waters of the state except discharges to waters classified as cold water permanent fish life propagation waters according to the ARSD 74:51:01:45. For discharges to waters of the state classified as cold water permanent fish life propagation waters, the effluent limit for total suspended solids will be 53 mg/L daily maximum.

The permittee has the option of completing effluent testing or implementing a pollution prevention plan for compliance with this permit. If the permittee develops a pollution prevention plan instead of total suspended solids sampling, the plan must be developed and implemented prior to discontinuing total suspended solids sampling. Refer to Section 4.0 of the permit. If any pollutants are suspected of being discharged, a sample must be taken for those parameters listed in Section 3.4 of the permit.

Refer to Commitment D1: Surface Water Quality for stream classification.

Action Taken/Required:

If construction dewatering is required and this project is not required to be covered under a General Permit for Stormwater Discharges Associated with Construction Activities, the Contractor will obtain the General Permit for Temporary Discharge Activities from the DANR Surface Water Program, 605-773-3351.

[https://danr.sd.gov/OfficeOfWater/SurfaceWaterQuality/docs/DANR\\_TemporaryDischargeNOI2018Fillable.pdf](https://danr.sd.gov/OfficeOfWater/SurfaceWaterQuality/docs/DANR_TemporaryDischargeNOI2018Fillable.pdf)

The Contractor will provide a copy of the approved permit or the submitted dewatering information to the Project Engineer prior to proceeding with any dewatering activities. The approved permit or submitted dewatering information must be kept on-site and as part of the project records.

Effluent monitoring, as a result of dewatering activities, will be summarized for each month and recorded on a separate Discharge Monitoring Report (DMR) and submitted to DANR monthly. Additional information can be found at:

<https://danr.sd.gov/OfficeOfWater/SurfaceWaterQuality/swdpermitting/Ereporting.aspx>

COMMITMENT E: STORM WATER

Construction activities constitute 1 acre or more of earth disturbance and/or work in a waterway.

Action Taken/Required:

The DANR General Permit for Stormwater Discharges Associated with Construction Activities is required for construction activity disturbing one or more acres of earth and work in a waterway. The SDDOT is the owner of this permit and will submit the NOI to DANR 15 days prior to project start in order to obtain coverage under the General Permit. Work can begin once the DANR letter of approval is received.

The Contractor must adhere to the “Special Provision Regarding Storm Water Discharges to Waters of the State.”

The Contractor will complete the DANR Contractor Certification Form prior to the pre-construction meeting. The form certifies under penalty of law that the Contractor understands and will comply with the terms and conditions of the permit for this project. Work may not begin on this project until this form is signed and submitted to DANR.

The form can be found at:  
[https://danr.sd.gov/OfficeOfWater/SurfaceWaterQuality/docs/DANR\\_CGPAppendixCCA2018Fillable.pdf](https://danr.sd.gov/OfficeOfWater/SurfaceWaterQuality/docs/DANR_CGPAppendixCCA2018Fillable.pdf)

The Contractor is advised that permit coverage may also be required for off-site activities, such as borrow and staging areas, which are the responsibility of the Contractor.

Storm Water Pollution Prevention Plan

The Storm Water Pollution Prevention Plan (SWPPP) will be developed prior to the submittal of the NOI and will be implemented for all construction activities for compliance with the permit. The SWPPP must be kept on-site and updated as site conditions change. Erosion control measures and best management practices will be implemented in accordance with the SWPPP.

The DOT 298 Form will be used for site inspections and to document changes to the SWPPP. A copy of the completed inspection form will be filed with the SWPPP documents and retained for a minimum of three years.

The inspection will include disturbed areas of the construction site that have not been finally stabilized, areas used for storage materials, structural control measures, and locations where vehicles enter or exit the site. These areas will be inspected for evidence of, or the potential for, pollutants entering the drainage system. Erosion and sediment control measures identified in the SWPPP will be observed to ensure that they are operating correctly, and sediment is not tracked off the site.

Information on storm water permits and SWPPPs are available on the following websites:

SDDOT: < <https://dot.sd.gov/doing-business/environmental/stormwater> >

DANR:<<https://danr.sd.gov/OfficeOfWater/SurfaceWaterQuality/stormwater/default.aspx>>

EPA: < <https://www.epa.gov/npdes> >

COMMITMENT G: DEWATERING AND SEDIMENT COLLECTION

The purpose of a dewatering and sediment collection system is to collect turbid storm water on the project, treat it with flocculants as needed, and capture the sediment that falls out of suspension before the water is discharged into “Waters of the US” or “Waters of the State”. Refer to Commitment D1: Surface Water Quality for stream classification.

Action Taken/Required:

The Contractor will meet the terms of the Temporary Discharge Permit and the Storm Water Permit for Construction Activities.

The Contractor will create a Pollution Prevention Plan (PPP) for dewatering and sediment collection if the Contractor chooses to discharge the water into “Waters of the US” or “Waters of the State”. Refer to the detail sheet OPTIONS FOR DEWATERING AND SEDIMENT COLLECTION in the plans. The PPP must be kept on-site and updated as site conditions change.



STATE OF SOUTH DAKOTA	PROJECT	SHEET	TOTAL SHEETS
	NH-PH 0050(116)354 P 0037 (168)19	A6	A6

Plotting Date: 1/2/2025

**COMMITMENT H: WASTE DISPOSAL SITE**

The Contractor will furnish a site(s) for the disposal of construction and/or demolition debris generated by this project.

**Action Taken/Required:**

Construction and/or demolition debris may not be disposed of within the Public ROW.

The waste disposal site(s) will be managed and reclaimed in accordance with the following from the General Permit for Construction/Demolition Debris Disposal Under the South Dakota Waste Management Program issued by the Department of Agriculture and Natural Resources.

The waste disposal site(s) will not be located in a wetland, within 200 feet of surface water, or in an area that adversely affects wildlife, recreation, aesthetic value of an area, or any threatened or endangered species, as approved by the Environmental Office and the Project Engineer.

If the waste disposal site(s) is located such that it is within view of any ROW, the following additional requirements will apply:

1. Construction and/or demolition debris consisting of concrete, asphalt concrete, or other similar materials will be buried in a trench separate from wood debris. The final cover over the construction and/or demolition debris will consist of a minimum of 1 foot of soil capable of supporting vegetation. Waste disposal sites provided outside of the Public ROW will be seeded in accordance with Natural Resources Conservation Service recommendations. The seeding recommendations may be obtained through the appropriate County NRCS Office. The Contractor will control the access to waste disposal sites not within the Public ROW with fences, gates, and placement of a sign or signs at the entrance to the site stating, "No Dumping Allowed".

2. Concrete and asphalt concrete debris may be stockpiled within view of the ROW for a period not to exceed the duration of the project. Prior to project completion, the waste will be removed from view of the ROW or buried, and the waste disposal site reclaimed as noted above.

The above requirements will not apply to waste disposal sites that are covered by an individual solid waste permit as specified in SDCL 34A-6-58, SDCL 34A-6-1.13, and ARSD 74:27:10:06.

Failure to comply with the requirements stated above may result in civil penalties in accordance with South Dakota Solid Waste Law, SDCL 34A-6-1.31.

All costs associated with furnishing waste disposal site(s), disposing of waste, maintaining control of access (fence, gates, and signs), and reclamation of the waste disposal site(s) will be incidental to the various contract items.

**COMMITMENT I: HISTORIC PRESERVATION OFFICE CLEARANCES**

The SDDOT has obtained concurrence with the State Historic Preservation Office (SHPO or THPO) for all work included within the project limits and all department designated sources and designated option material sources, stockpile sites, storage areas, and waste sites provided within the plans.

**Action Taken/Required:**

All earth disturbing activities not designated within the plans require a cultural resource review prior to scheduling the pre-construction meeting. This work includes but is not limited to: Contractor furnished material sources, material processing sites, stockpile sites, storage areas, plant sites, and waste areas.

The Contractor will arrange and pay for a record search and when necessary, a cultural resource survey. The Contractor has the option to contact the state Archaeological Research Center (ARC) at 605-394-1936 or another qualified archaeologist, to obtain either a records search or a cultural resources survey. A record search might be sufficient for review if the site was previously surveyed; however, a cultural resources survey may need to be conducted by a qualified archaeologist.

The Contractor will provide ARC with the following: a topographical map or aerial view in which the site is clearly outlined, site dimensions, project number, and PCN. If applicable, provide evidence that the site has been previously disturbed by farming, mining, or construction activities with a landowner statement that artifacts have not been found on the site.

The Contractor will submit the cultural resources survey report to SDDOT Environmental Office, 700 East Broadway Avenue, Pierre, SD 57501-2586. SDDOT will submit the information to the appropriate SHPO. Allow **30 Days** from the date this information is submitted to the Environmental Engineer for SHPO review.

In the event of an inadvertent discovery of human remains, funerary objects, or if evidence of cultural resources is identified during project construction activities, then such activities within 150 feet of the inadvertent discovery will immediately cease and the Project Engineer will be immediately notified. The Project Engineer will contact the SDDOT Environmental Office, who will contact the appropriate SHPO within 48 hours of the discovery to determine an appropriate course of action.

SHPO review does not relieve the Contractor of the responsibility for obtaining any additional permits and clearances for Contractor furnished material sources, material processing sites, stockpile sites, storage areas, plant sites, and waste areas that affect wetlands, threatened and endangered species, or waterways. The Contractor will not utilize a site known or suspected of having contaminated soil or water. The Contractor will provide the required permits and clearances to the Project Engineer at the preconstruction meeting.

**COMMITMENT N: SECTION 404 PERMIT**

The SDDOT has obtained a Section 404 Permit from the USACE for the permanent actions associated with this project.

**Action Taken/Required:**

The Contractor will comply with all requirements contained in the Section 404 Permit.

The Contractor will also be responsible for obtaining a Section 404 Permit for any dredge, excavation, or fill activities associated with material sources, storage areas, waste sites, and Contractor work sites outside the plan work limits that affect wetlands, floodplains, or waters of the United States.