

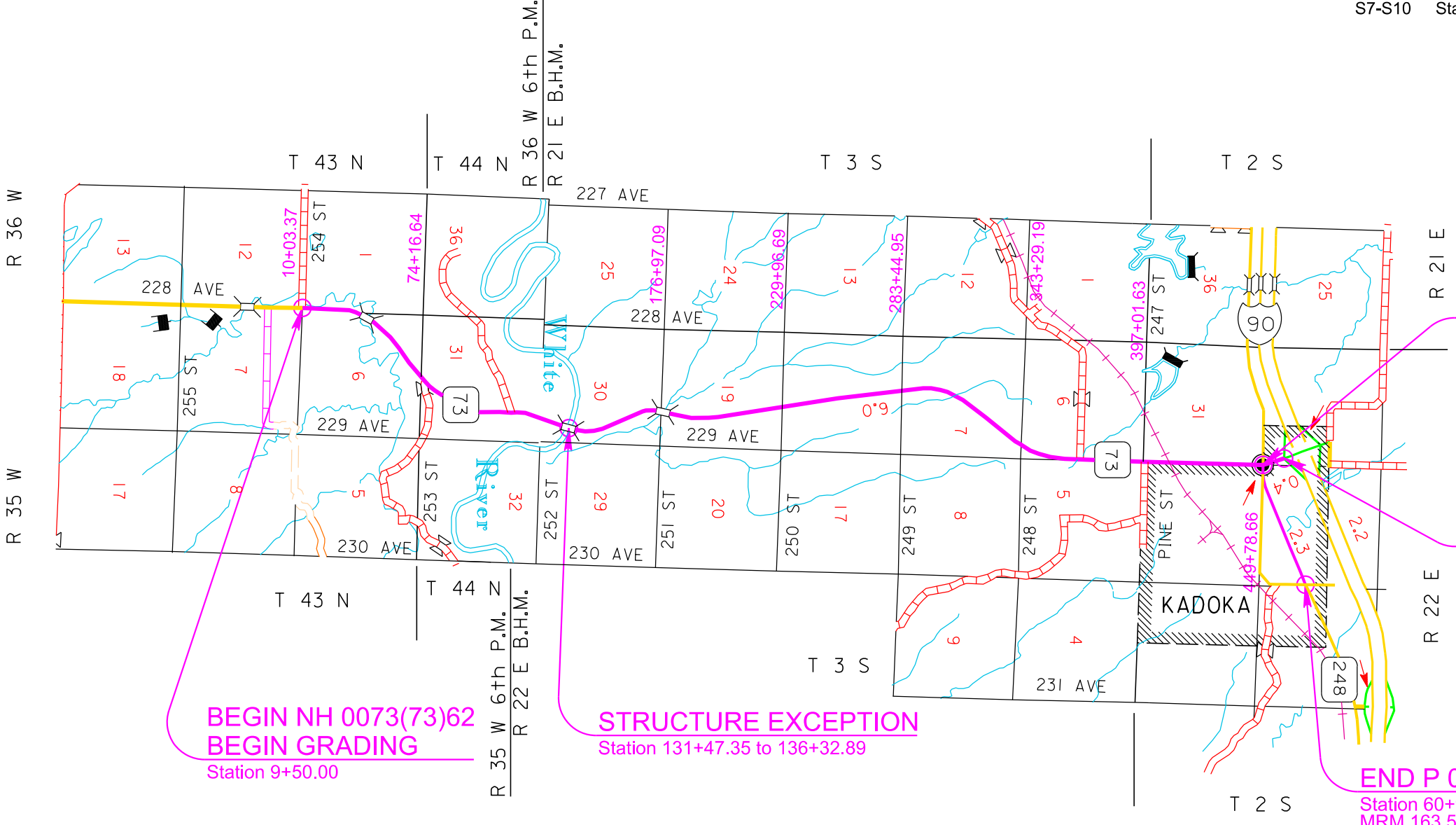
SECTION S: PERMANENT SIGNING PLANS

STATE OF SOUTH DAKOTA	PROJECT	SHEET	TOTAL SHEETS
	NH 0073(73)62 P 0248(17)162	S1	S10

Plotting Date: 03/02/2023

INDEX OF SHEETS

- S1 General Layout with Index
- S2 Estimate with General Notes and Tables
- S3-S6 Sign Tables
- S7-S10 Standard Plates



**BEGIN NH 0073(73)62
BEGIN GRADING**
Station 9+50.00

STRUCTURE EXCEPTION
Station 131+47.35 to 136+32.89

BEGIN P 0248(17)162
Station 1+42.70
MRM 162.44

**END NH 0073(73)62
END GRADING**
Station 462+77.23

END P 0248(17)162
Station 60+91.14
MRM 163.52

SECTION S – ESTIMATE OF QUANTITIES

BID ITEM NUMBER	ITEM	QUANTITY	UNIT
110E0135	Remove Delineator	186	Each
110E5020	Salvage Traffic Sign	87	Each
110E7150	Remove Sign for Reset	17	Each
632E2024	4"x8" White Delineator with 1.12 Lb/Ft Post	176	Each
632E2028	4" Tubular White Delineator with 1.12 Lb/Ft Post	10	Each
632E3500	Reset Sign	17	Each

PERMANENT SIGNING

All existing signs, posts, and hardware removed as per these plans remain the property of the State of South Dakota.

State Forces will install all signs (except STOP sign) as shown in the Table of Salvage/Reset Traffic Sign.

GENERAL PERMANENT SIGNING

New sign installations will be staked in the field by the Contractor and checked by the Engineer. The Contractor will give the Engineer a minimum of one week to check staked locations prior to signpost installation. Lateral offset of signs will be as shown in the plans or as directed by the Engineer.

The Contractor will be responsible for contacting South Dakota One Call to locate the utilities at the staked sign installation locations.

When signs are mounted in an assembly, they will be 1-2 inches apart vertically and horizontally.

The height of the post must not exceed the minimum height needed by more than 0.5 feet. Any portion that extends above the sign will be cut off. No separate payment will be made for cutting the post or for that length cut off.

Aluminum U-Channel stiffeners will be used on all signs 36 inches or greater in width and will conform to ASTM B221 Alloy 6063-T6 or 6061-T6. The U-Channel will be 2 inches in width and free of holes. The U-Channel stiffeners will also be used to connect various signs together so that an entire sign assembly can be erected on a single installation. Stiffeners may be fastened to signs by use of 1/4-inch diameter drive rivets.

The Contractor will use 3/8-inch diameter rust proof machine sign bolts, flat metal washers, neoprene washers (against the sign sheeting), lock washers, and nuts to fasten the sign to the channel aluminum and posts. A minimum of two bolts will extend through each post.

Prior to ordering signs, the Contractor will verify dimensions, background, border, and legend of the signs.

Prior to use, the Contractor will provide documentation for the sign support devices showing they meet the applicable NCHRP 350 or MASH requirements.

REMOVE SIGN FOR RESET AND RESET SIGN

The Contractor will remove the STOP sign and posts for reset as shown in the Table of Salvage/Reset Traffic Sign.

Signs that are scheduled for reset will be dismantled and reassembled to the extent needed by the Contractor to properly reset the sign. Signs will be handled with care so that the existing signs, posts, and bases are not damaged during the relocation process. The Contractor will replace and pay for any reset signs damaged in their care. The Contractor will remove and dispose of any existing posts for all reset signs that require use of new posts as shown in the Table of Permanent Signing.

Any 911 Emergency Number signs within the project work limits will not be stockpiled but temporarily repositioned at a location outside the work limits but within the immediate proximity of the existing location. To complete the project sign work, the 911 Emergency Number signs will be permanently installed at their original locations, or as near as practicable where entrances have been reconfigured by the project. The existing supports will be reused. Cost for removing, temporarily repositioning, and permanently resetting 911 Emergency Number signs will be included in the contract unit price per each for "Remove Sign for Reset" and "Reset Sign".

All costs for removing, dismantling, and disposing of any existing posts will be incidental to the contract unit price per each for "Remove Sign for Reset". All costs for resetting the existing signs will be incidental to the contract unit price per each for "Reset Sign". All quantities for Remove Sign for Reset and Reset Sign will be per assembly at the contract unit price per each.

SALVAGE TRAFFIC SIGN

All signs listed for salvage in the Table of Salvage/Reset Traffic Sign will have the existing posts, bases, and signs dismantled and delivered to the Kadoka Maintenance Yard at 910 SD Hwy 73. The Contractor will notify the Engineer two days prior to time of delivery to the Maintenance Yard so correct placement for storage and inventory of materials can be made upon receipt. All bolts, nuts, and washers will be placed in individual 5-gallon pails. Wooden posts will be stockpiled separately from steel posts. All signs listed for salvage will be handled with care so that the signs are not damaged during removal or transport. The Contractor will replace and pay for any salvaged signs damaged in their care.

All costs for labor and equipment necessary to remove, dismantle, and deliver signs to the Kadoka Maintenance Yard will be incidental to the contract unit price per each for Salvage Traffic Sign. The quantity of signs to be salvaged is shown in the Table of Salvage/Reset Traffic Sign. The plans quantity is shown as per assembly. Payment for salvaging signs will be paid per assembly at the contract unit price per each for "Salvage Traffic Sign".

TABLE OF SALVAGE/RESET TRAFFIC SIGN (SD73)

Existing MRM (SD 73)	Disp	SIGN					Assembly Number	Reset/Remove or Salvage	REMARKS
		Width	Height	Number / Description	Facing Traffic				
62 - L	0.412	30	30	R1-1: STOP	Eastbound	1	R	Remove and Reset	
63.14 - L	0.11	48	36	W14-3: NO PASSING ZONE	Northbound	2	S	Salvage and Stockpile	
63.14 - R	0.465	48	36	W14-3: NO PASSING ZONE	Southbound	3	S	Salvage and Stockpile	
63.14 - L	0.55	48	36	W14-3: NO PASSING ZONE	Northbound	4	S	Salvage and Stockpile	
63.14 - R	0.581	30	30	R1-1: STOP	Northbound	5	R	Remove and Reset	
63.14 - R	0.59	30	30	W1-2L: LEFT CURVE ARROW	Northbound	6	S	Salvage and Stockpile	
64 - R	0.154	48	36	W14-3: NO PASSING ZONE	Southbound	7	S	Salvage and Stockpile	
64 - L	0.495	30	30	W1-2R: RIGHT CURVE ARROW	Southbound	8	S	Salvage and Stockpile	
64 - R	0.797	30	30	W1-2L: LEFT CURVE ARROW	Northbound	9	S	Salvage and Stockpile	
64 - R	0.877	30	24	I-3C: WHITE RIVER	Northbound	10	S	Salvage and Stockpile	
64.94 - L	0.046	30	24	I-3C: WHITE RIVER	Southbound	11	S	Salvage and Stockpile	
65 - R	0.303	48	36	W14-3: NO PASSING ZONE	Southbound	12	S	Salvage and Stockpile	
65 - L	0.328	30	30	W1-2R: RIGHT CURVE ARROW	Southbound	13	S	Salvage and Stockpile	
65 - R	0.532	30	30	W1-2R: RIGHT CURVE ARROW	Northbound	14	S	Salvage and Stockpile	
65 - L	0.851	30	30	W1-2L: LEFT CURVE ARROW	Southbound	15	S	Salvage and Stockpile	
65 - L	0.978	48	36	W14-3: NO PASSING ZONE	Northbound	16	S	Salvage and Stockpile	
67 - R	0.387	48	36	W14-3: NO PASSING ZONE	Southbound	17	S	Salvage and Stockpile	
67 - L	0.411	48	36	W14-3: NO PASSING ZONE	Northbound	18	S	Salvage and Stockpile	
67 - R	0.768	48	36	W14-3: NO PASSING ZONE	Southbound	19	S	Salvage and Stockpile	
67 - L	0.885	48	36	W14-3: NO PASSING ZONE	Northbound	20	S	Salvage and Stockpile	
67 - L	0.983	24	24	M1-5: ROUTE MARKER (STATE 73)	Southbound	21	S	Salvage and Stockpile	
	0.983	24	12	M3-3A: DIRECTIONAL MARKER - SOUTH - US	Southbound		S	Salvage and Stockpile	
68 - R	0.26	48	36	W14-3: NO PASSING ZONE	Southbound	22	S	Salvage and Stockpile	
68 - L	0.355	48	36	W14-3: NO PASSING ZONE	Northbound	23	S	Salvage and Stockpile	
68 - R	0.812	48	36	W14-3: NO PASSING ZONE	Southbound	24	S	Salvage and Stockpile	
68 - L	0.937	48	36	W14-3: NO PASSING ZONE	Northbound	25	S	Salvage and Stockpile	
69 - L	0.437	30	30	R1-1: STOP	Eastbound	26	R	Remove and Reset	
69 - R	0.465	48	36	W14-3: NO PASSING ZONE	Southbound	27	S	Salvage and Stockpile	
69 - L	0.594	48	36	W14-3: NO PASSING ZONE	Northbound	28	S	Salvage and Stockpile	
69 - R	0.944	30	30	R1-1: STOP	Westbound	29	R	Remove and Reset	
69.94 - R	0.028	48	36	W14-3: NO PASSING ZONE	Southbound	30	S	Salvage and Stockpile	
70 - R	0.231	30	36	W3-5: SPEED REDUCTION (SYM) SPECIFY SPEED LIMIT	Northbound	31	S	Salvage and Stockpile	
70 - L	0.428	24	30	R2-1X: SPEED LIMIT - [65]	Southbound	32	S	Salvage and Stockpile	
70 - R	0.429	24	30	R2-1X: SPEED LIMIT - [45]	Northbound	33	S	Salvage and Stockpile	
70 - R	0.494	36	36	W3-5: SPEED REDUCTION (SYM) SPECIFY SPEED LIMIT	Northbound	34	S	Salvage and Stockpile	
70 - R	0.646	24	36	R2-1X: SPEED LIMIT - [30]	Northbound	35	S	Salvage and Stockpile	
70 - L	0.646	24	30	R2-1X: SPEED LIMIT - [45]	Southbound	36	S	Salvage and Stockpile	
70 - R	0.687	60	18	D1-1D: TOWN BOARD - 1 LINE (6"UC & LC)	Northbound	37	S	Salvage and Stockpile	

TABLE OF SALVAGE/RESET TRAFFIC SIGN (SD73) (CONT.)

Existing MRM (SD 73)	Disp	SIGN						REMARKS
		Width	Height	Number / Description	Facing Traffic	Assembly Number	Reset/Remove or Salvage	
70 - L	0.691	60	72	SW12-1A: GIVE 'EM A BRAKE (SYM) DON'T CROWD THE PLOW / HI	Southbound	38	S	Salvage and Stockpile
70 - L	0.731	48	36	W14-3: NO PASSING ZONE	Northbound	39	S	Salvage and Stockpile
70 - R	0.734	70	42	I8-2B: SDDOT MAINTENANCE SHOP	Eastbound	40	S	Salvage and Stockpile
70 - L	0.758	60	30	D2-2: DISTANCE BOARD - 2 LINES W/MILE AGE ONLY	Southbound	41	S	Salvage and Stockpile
70 - R	0.805	30	30	R1-1: STOP	Westbound	42	R	Remove and Reset
70 - R	0.844	24	30	R2-1X: SPEED LIMIT - [30]	Northbound	43	S	Salvage and Stockpile
70 - L	0.845	24	30	R2-1X: SPEED LIMIT - [30]	Southbound	44	S	Salvage and Stockpile
70 - R	0.883	36	30	D4-4CL: BUSINESS DISTRICT (W/RIGHT ARROW)	Northbound	45	S	Salvage and Stockpile
70 - R	0.907	30	30	R1-1: STOP	Westbound	46	R	Remove and Reset
70 - R	0.915	21	15	M6-3A: DIR ARROW - VERT SINGLE HEAD - US	Northbound	47	S	Salvage and Stockpile
	0.915	24	24	M1-5: ROUTE MARKER (STATE 73)	Northbound		S	Salvage and Stockpile
	0.915	24	24	M1-1: ROUTE MARKER (INTERSTATE 90)	Northbound		S	Salvage and Stockpile
	0.915	21	15	M6-3A: DIR ARROW - VERT SINGLE HEAD - US	Northbound		S	Salvage and Stockpile
	0.915	24	12	M4-5A: TO MARKER - US	Northbound		S	Salvage and Stockpile
70 - L	0.921	24	34	M1-5: ROUTE MARKER (STATE 73)	Southbound	48	S	Salvage and Stockpile
	0.921	24	12	M3-3A: DIRECTIONAL MARKER - SOUTH - US	Southbound		S	Salvage and Stockpile
70.95 - L	0.004	21	15	M6-3A: DIR ARROW - VERT SINGLE HEAD - US	Southbound	49	S	Salvage and Stockpile
	0.004	24	24	M1-2: ROUTE MARKER BUSINESS LOOP	Southbound		S	Salvage and Stockpile
	0.004	21	15	M6-1A: DIR ARROW - HORIZ SINGLE HEAD - US	Southbound		S	Salvage and Stockpile
	0.004	24	24	M1-5: ROUTE MARKER (STATE 73)	Southbound		S	Salvage and Stockpile
70.95 - L	0.034	24	30	R2-1X: SPEED LIMIT - [30]	Southbound	50	S	Salvage and Stockpile
70.95 - L	0.046	36	30	D4-4CL: BUSINESS DISTRICT (W/LEFT ARROW)	Southbound	51	S	Salvage and Stockpile
70.95 - R	0.047	24	30	R2-1X: SPEED LIMIT - [30]	Northbound	52	S	Salvage and Stockpile
71.02 - R	0.004	30	30	R1-1: STOP	Westbound	53	R	Remove and Reset
71.02 - L	0.015	18	18	M1-2: ROUTE MARKER BUSINESS LOOP	Southbound	54	S	Salvage and Stockpile
	0.015	24	24	M1-5: ROUTE MARKER (STATE 73)	Southbound		S	Salvage and Stockpile
	0.015	18	150	M6-1A: DIR ARROW - HORIZ SINGLE HEAD - US	Southbound		S	Salvage and Stockpile
	0.015	21	15	M6-3A: DIR ARROW - VERT SINGLE HEAD - US	Southbound		S	Salvage and Stockpile
71.02 - R	0.026	21	15	M2-1A: JUNCTION MARKER - US	Northbound	55	S	Salvage and Stockpile
	0.026	24	24	M1-1: ROUTE MARKER (INTERSTATE 90)	Northbound		S	Salvage and Stockpile
71.02 - L	0.054	60	18	D1-1D: TOWN BOARD - 1 LINE (6"UC & LC)	Southbound	56	S	Salvage and Stockpile
71.09 - R	0.01	21	15	M6-3A: DIR ARROW - VERT SINGLE HEAD - US	Northbound	57	S	Salvage and Stockpile
	0.01	24	12	M3-1A: DIRECTION MARKER - NORTH - US	Northbound		S	Salvage and Stockpile
	0.01	24	24	M1-5: ROUTE MARKER (STATE 73)	Northbound		S	Salvage and Stockpile
71.09 - L	0.036	24	30	R1-2: YIELD	Southbound	58	S	Salvage and Stockpile
71.09 - R	0.059	98	36	D1-2: DESTINATION BOARD - 2 LINES W/ ARROW	Northbound	59	S	Salvage and Stockpile
71.09 - L	0.085	24	24	M1-2: ROUTE MARKER BUSINESS LOOP	Southbound	60	S	Salvage and Stockpile
	0.085	24	12	M3-3A: DIRECTIONAL MARKER - SOUTH - US	Southbound		S	Salvage and Stockpile
	0.085	24	24	M1-5: ROUTE MARKER (STATE 73)	Southbound		S	Salvage and Stockpile

TABLE OF SALVAGE/RESET TRAFFIC SIGN (SD 73) (CONT.)

Revised 8/30/23 SML

Existing MRM (SD 73)	Disp	SIGN					REMARKS	
		Width	Height	Number / Description	Facing Traffic	Assembly Number		Reset/Remove or Salvage
71.09 - R	0.106	24	24	M1-1: ROUTE MARKER (INTERSTATE 90)	Northbound	61	S	Salvage and Stockpile
	0.106	24	12	M3-2A: DIRECTIONAL MARKER - EAST - US	Northbound		S	Salvage and Stockpile
	0.106	21	15	M6-1A: DIR ARROW - HORIZ SINGLE HEAD - US	Northbound		S	Salvage and Stockpile
71.09 - R	0.121	21	15	M6-1A: DIR ARROW - HORIZ SINGLE HEAD - US	Eastbound	62	S	Salvage and Stockpile
	0.121	24	12	M3-3A: DIRECTIONAL MARKER - SOUTH - US	Eastbound		S	Salvage and Stockpile
	0.121	24	24	M1-2: ROUTE MARKER BUSINESS LOOP	Eastbound		S	Salvage and Stockpile
	0.121	24	24	M1-5: ROUTE MARKER (STATE 73)	Eastbound		S	Salvage and Stockpile

TABLE OF SALVAGE/RESET TRAFFIC SIGN (SD 248)

Existing MRM (SD 248)	Disp	SIGN					REMARKS	
		Width	Height	Number / Description	Facing Traffic	Assembly Number		Reset/Remove or Salvage
162.44 - L	0.005	36	36	R1-2: YIELD	Northbound	63	S	Salvage and Stockpile
162.44 - R	0.008	36	36	R1-1: STOP	Westbound	64	R	Remove and Reset
162.44 - R	0.013	24	24	M1-1: ROUTE MARKER (INTERSTATE)	Eastbound	65	S	Salvage and Stockpile
	0.013	24	24	M1-5: ROUTE MARKER (STATE/COUNTY ROADS)	Eastbound		S	Salvage and Stockpile
	0.013	24	24	M1-5: ROUTE MARKER (STATE/COUNTY ROADS)	Eastbound		S	Salvage and Stockpile
	0.013	24	12	M3-1A: DIRECTION MARKER - NORTH - US	Eastbound		S	Salvage and Stockpile
	0.013	24	12	M3-3A: DIRECTIONAL MARKER - SOUTH - US	Eastbound		S	Salvage and Stockpile
	0.013	24	12	M4-5A: TO MARKER - US	Eastbound		S	Salvage and Stockpile
	0.013	21	15	M6-1A: DIR ARROW - HORIZ SINGLE HEAD - US	Eastbound		S	Salvage and Stockpile
	0.013	21	15	M6-1A: DIR ARROW - HORIZ SINGLE HEAD - US	Eastbound		S	Salvage and Stockpile
	0.013	21	15	M6-1A: DIR ARROW - HORIZ SINGLE HEAD - US	Eastbound		S	Salvage and Stockpile
162.48 - R	0.018	30	30	R1-1: STOP	Northbound	66	R	Remove and Reset
162.48 - L	0.019	48	48	W3-1: STOP AHEAD (SYM)	Westbound	67	S	Salvage and Stockpile
162.48 - R	0.023	24	24	M1-2: ROUTE MARKER BUSINESS LOOP	Eastbound	68	S	Salvage and Stockpile
162.48 - R	0.044	24	12	M4-4A: TRUCK ROUTE MARKER - US	Eastbound	69	S	Salvage and Stockpile
	0.044	24	12	M4-4A: TRUCK ROUTE MARKER - US	Eastbound		S	Salvage and Stockpile
	0.044	24	12	M4-5A: TO MARKER - US	Eastbound		S	Salvage and Stockpile
	0.044	21	15	M6-3A: DIR ARROW - VERT SINGLE HEAD - US	Eastbound		S	Salvage and Stockpile
162.48 - L	0.079	21	15	M2-1A: JUNCTION MARKER - US	Westbound	70	S	Salvage and Stockpile
	0.079	24	24	M1-5: ROUTE MARKER (STATE/COUNTY ROADS)	Westbound		S	Salvage and Stockpile
162.48 - L	0.109	48	36	W14-3: NO PASSING ZONE	Eastbound	71	S	Salvage and Stockpile
162.48 - R	0.121	24	30	R2-1X: SPEED LIMIT - [45]	Eastbound	72	S	Salvage and Stockpile
162.48 - L	0.149	30	30	R1-1: STOP	NorthWest	73	R	Remove and Reset
162.48 - R	0.152	48	36	W14-3: NO PASSING ZONE	Westbound	74	S	Salvage and Stockpile
162.71- Overhead	0.016	30	30	R1-1: STOP	Northbound	75	R	Remove and Reset

TABLE OF SALVAGE/RESET TRAFFIC SIGN (SD 73) (CONT.)

Revised 8/30/23 SML

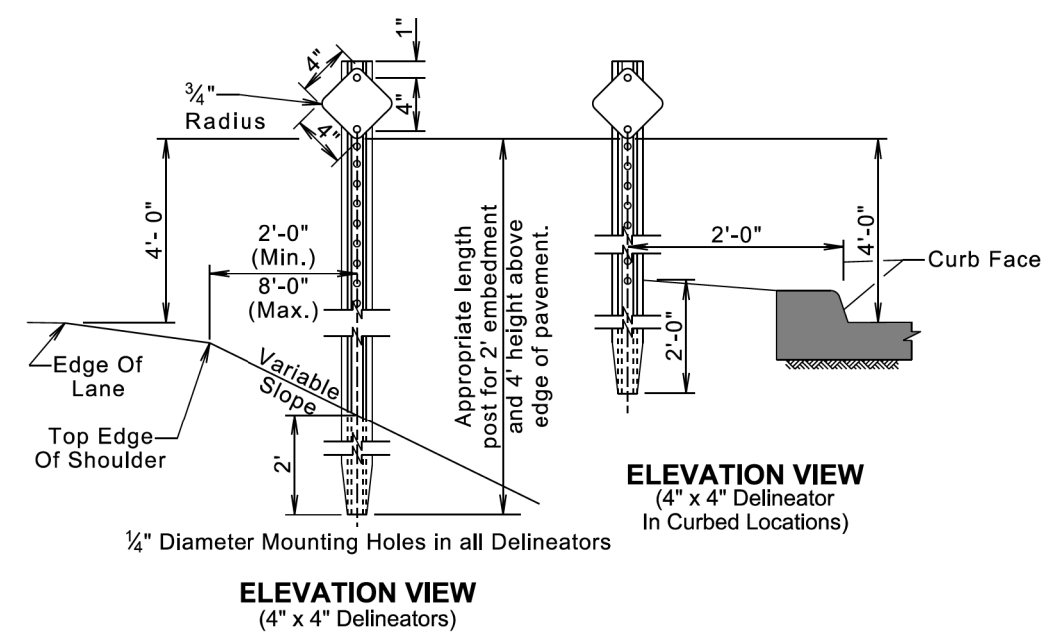
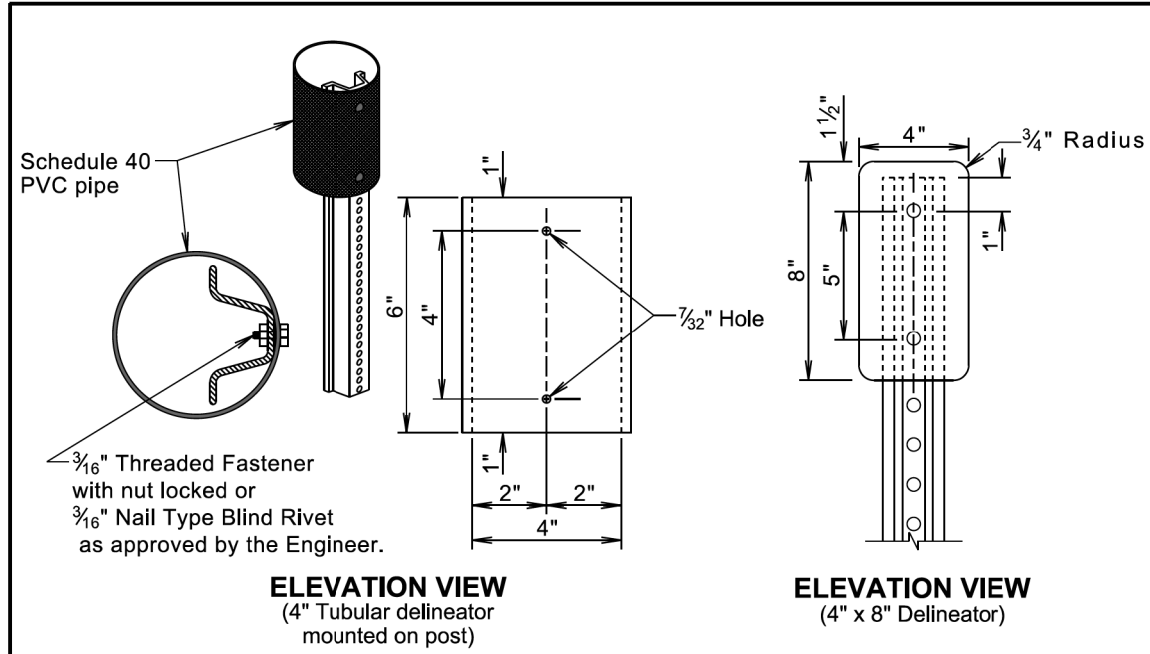
Existing MRM (SD 73)	Disp	SIGN					REMARKS	
		Width	Height	Number / Description	Facing Traffic	Assembly Number		Reset/Remove or Salvage
71.09 - R	0.106	24	24	M1-1: ROUTE MARKER (INTERSTATE 90)	Northbound	61	S	Salvage and Stockpile
	0.106	24	12	M3-2A: DIRECTIONAL MARKER - EAST - US	Northbound		S	Salvage and Stockpile
	0.106	21	15	M6-1A: DIR ARROW - HORIZ SINGLE HEAD - US	Northbound		S	Salvage and Stockpile
71.09 - R	0.121	21	15	M6-1A: DIR ARROW - HORIZ SINGLE HEAD - US	Eastbound	62	S	Salvage and Stockpile
	0.121	24	12	M3-3A: DIRECTIONAL MARKER - SOUTH - US	Eastbound		S	Salvage and Stockpile
	0.121	24	24	M1-2: ROUTE MARKER BUSINESS LOOP	Eastbound		S	Salvage and Stockpile
	0.121	24	24	M1-5: ROUTE MARKER (STATE 73)	Eastbound		S	Salvage and Stockpile

TABLE OF SALVAGE/RESET TRAFFIC SIGN (SD 248)

Existing MRM (SD 248)	Disp	SIGN					REMARKS	
		Width	Height	Number / Description	Facing Traffic	Assembly Number		Reset/Remove or Salvage
162.44 - L	0.005	36	36	R1-2: YIELD	Northbound	63	S	Salvage and Stockpile
162.44 - R	0.008	36	36	R1-1: STOP	Westbound	64	R	Remove and Reset
162.44 - R	0.013	24	24	M1-1: ROUTE MARKER (INTERSTATE)	Eastbound	65	S	Salvage and Stockpile
	0.013	24	24	M1-5: ROUTE MARKER (STATE/COUNTY ROADS)	Eastbound		S	Salvage and Stockpile
	0.013	24	24	M1-5: ROUTE MARKER (STATE/COUNTY ROADS)	Eastbound		S	Salvage and Stockpile
	0.013	24	12	M3-1A: DIRECTION MARKER - NORTH - US	Eastbound		S	Salvage and Stockpile
	0.013	24	12	M3-3A: DIRECTIONAL MARKER - SOUTH - US	Eastbound		S	Salvage and Stockpile
	0.013	24	12	M4-5A: TO MARKER - US	Eastbound		S	Salvage and Stockpile
	0.013	21	15	M6-1A: DIR ARROW - HORIZ SINGLE HEAD - US	Eastbound		S	Salvage and Stockpile
	0.013	21	15	M6-1A: DIR ARROW - HORIZ SINGLE HEAD - US	Eastbound		S	Salvage and Stockpile
	0.013	21	15	M6-1A: DIR ARROW - HORIZ SINGLE HEAD - US	Eastbound		S	Salvage and Stockpile
162.48 - R	0.018	30	30	R1-1: STOP	Northbound	66	R	Remove and Reset
162.48 - L	0.019	48	48	W3-1: STOP AHEAD (SYM)	Westbound	67	S	Salvage and Stockpile
162.48 - R	0.023	24	24	M1-2: ROUTE MARKER BUSINESS LOOP	Eastbound	68	S	Salvage and Stockpile
162.48 - R	0.044	24	12	M4-4A: TRUCK ROUTE MARKER - US	Eastbound	69	S	Salvage and Stockpile
	0.044	24	12	M4-4A: TRUCK ROUTE MARKER - US	Eastbound		S	Salvage and Stockpile
	0.044	24	12	M4-5A: TO MARKER - US	Eastbound		S	Salvage and Stockpile
	0.044	21	15	M6-3A: DIR ARROW - VERT SINGLE HEAD - US	Eastbound		S	Salvage and Stockpile
162.48 - L	0.079	21	15	M2-1A: JUNCTION MARKER - US	Westbound	70	S	Salvage and Stockpile
	0.079	24	24	M1-5: ROUTE MARKER (STATE/COUNTY ROADS)	Westbound		S	Salvage and Stockpile
162.48 - L	0.109	48	36	W14-3: NO PASSING ZONE	Eastbound	71	S	Salvage and Stockpile
162.48 - R	0.121	24	30	R2-1X: SPEED LIMIT - [45]	Eastbound	72	S	Salvage and Stockpile
162.48 - L	0.149	30	30	R1-1: STOP	NorthWest	73	R	Remove and Reset
162.48 - R	0.152	48	36	W14-3: NO PASSING ZONE	Westbound	74	S	Salvage and Stockpile
162.71- Overhead	0.016	30	30	R1-1: STOP	Northbound	75	R	Remove and Reset

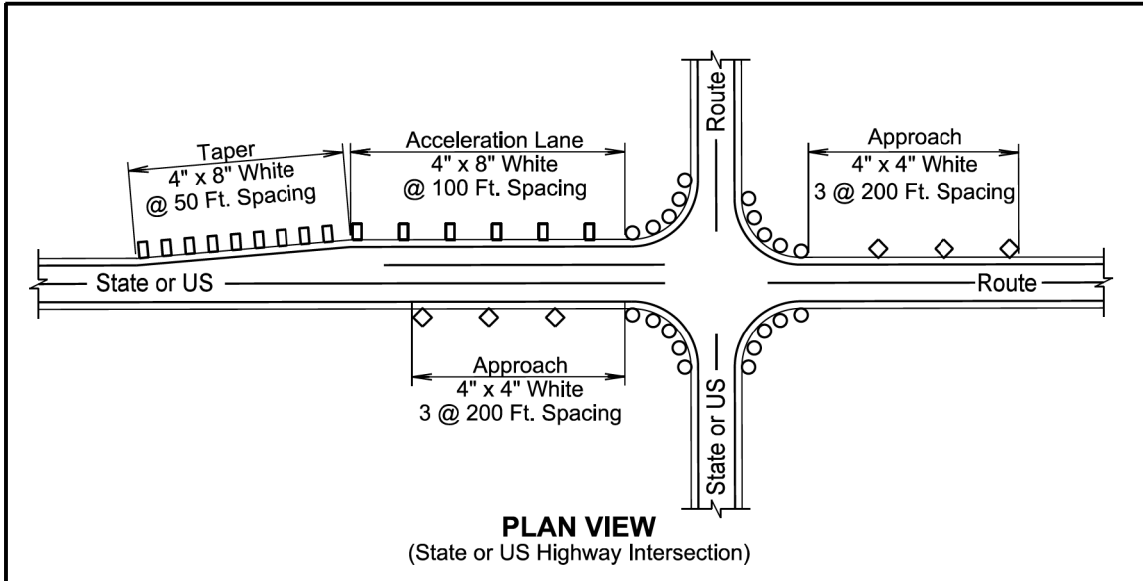
TABLE OF SALVAGE/RESET TRAFFIC SIGN (SD248) (CONT.)

Existing MRM (SD 248)	Disp	SIGN					Reset/Remove or Salvage	REMARKS
		Width	Height	Number / Description	Facing Traffic	Assembly Number		
162.75 - R	0.07	30	30	R1-1: STOP	Northbound	76	R	Remove and Reset
162.88 - R	0	30	30	R1-1: STOP	Northbound	77	R	Remove and Reset
162.88 - R	0.008	24	30	R2-1X: SPEED LIMIT - [45]	Eastbound	78	S	Salvage and Stockpile
162.88 - L	0.032	24	12	M4-5A: TO MARKER - US	Westbound	79	S	Salvage and Stockpile
	0.032	24	24	M1-1: ROUTE MARKER (INTERSTATE)	Westbound		S	Salvage and Stockpile
	0.032	21	15	M6-3A: DIR ARROW - VERT SINGLE HEAD - US	Westbound		S	Salvage and Stockpile
162.88 - L	0.075	24	24	M1-2: ROUTE MARKER BUSINESS LOOP	Westbound	80	S	Salvage and Stockpile
162.96 - R	0.006	24	18	R14-1: TRUCK ROUTE - WORDS	Eastbound	81	S	Salvage and Stockpile
	0.006	21	15	M6-3A: DIR ARROW - VERT SINGLE HEAD - US	Eastbound		S	Salvage and Stockpile
163 - R	0.012	48	36	W14-3: NO PASSING ZONE	Westbound	82	S	Salvage and Stockpile
	0.012	36	30	D4-4CL: BUSINESS DISTRICT (W/RIGHT ARROW)	Eastbound		S	Salvage and Stockpile
163 - R	0.025	30	30	R1-1: STOP	Northbound	83	R	Remove and Reset
163 - R	0.516	30	30	R1-1: STOP	Northbound	84	R	Remove and Reset
163.02 - L	0.038	36	30	D4-4CL: BUSINESS DISTRICT (W/LEFT ARROW)	Westbound	85	S	Salvage and Stockpile
163.02 - R	0.052	24	24	M1-2: ROUTE MARKER BUSINESS LOOP	Eastbound	86	S	Salvage and Stockpile
163.02 - L	0.098	48	36	W14-3: NO PASSING ZONE	Eastbound	87	S	Salvage and Stockpile
163.02 - L	0.102	24	30	R2-1X: SPEED LIMIT - [45]	Westbound	88	S	Salvage and Stockpile
163.02 - R	0.119	24	12	SS1-1: SPECIAL SERVICES	Eastbound	89	S	Salvage and Stockpile
	0.119	24	18	R14-1: TRUCK ROUTE - WORDS	Eastbound		S	Salvage and Stockpile
	0.119	21	15	M6-1A: DIR ARROW - HORIZ SINGLE HEAD - US	Eastbound		S	Salvage and Stockpile
163.02 - L	0.143	24	12	M4-5A: TO MARKER - US	Westbound	90	S	Salvage and Stockpile
	0.143	24	24	M1-1: ROUTE MARKER (INTERSTATE)	Westbound		S	Salvage and Stockpile
	0.143	21	15	M6-3A: DIR ARROW - VERT SINGLE HEAD - US	Westbound		S	Salvage and Stockpile
163.02 - R	0.151	30	30	R1-1: STOP	Northbound	91	R	Remove and Reset
163.14 - L	0.018	21	15	M6-1A: DIR ARROW - HORIZ SINGLE HEAD - US	Westbound	92	S	Salvage and Stockpile
	0.018	21	15	M6-1A: DIR ARROW - HORIZ SINGLE HEAD - US	Westbound		S	Salvage and Stockpile
	0.018	24	24	R14-1: TRUCK ROUTE - WORDS	Westbound		S	Salvage and Stockpile
163.14 - R	0.108	24	24	M1-1: ROUTE MARKER (INTERSTATE)	Eastbound	93	S	Salvage and Stockpile
	0.108	24	12	M4-5A: TO MARKER - US	Eastbound		S	Salvage and Stockpile
	0.108	21	15	M6-3A: DIR ARROW - VERT SINGLE HEAD - US	Eastbound		S	Salvage and Stockpile
163.38 - R	0	30	30	R1-1: STOP	Northbound	94	R	Remove and Reset
163.38 - L	0.041	24	24	M1-2: ROUTE MARKER BUSINESS LOOP	Westbound	95	S	Salvage and Stockpile
163.38 - L	0.06	24	30	R2-1X: SPEED LIMIT - [45]	Westbound	96	S	Salvage and Stockpile
163.38 - R	0.077	30	24	I-5CR: AIRPORT - WORD W/ RIGHT ARROW	Eastbound	97	S	Salvage and Stockpile
163.48 - L	0.024	30	24	I-5CL: AIRPORT - WORD W/ LEFT ARROW	Westbound	98	S	Salvage and Stockpile
163.48 - R	0.051	24	24	M1-2: ROUTE MARKER BUSINESS LOOP	Eastbound	99	S	Salvage and Stockpile
163.48 - L	0.112	21	15	M6-3A: DIR ARROW - VERT SINGLE HEAD - US	Westbound	100	S	Salvage and Stockpile
	0.112	24	12	M4-5A: TO MARKER - US	Westbound		S	Salvage and Stockpile
	0.112	24	12	M4-5A: TO MARKER - US	Westbound		S	Salvage and Stockpile
	0.112	24	18	R14-1: TRUCK ROUTE - WORDS	Westbound		S	Salvage and Stockpile
163.48 - L	0.175	60	18	D1-1D: TOWN BOARD - 1 LINE (6"UC & LC)	Westbound	101	S	Salvage and Stockpile
163.48 - L	0.214	24	30	R2-1X: SPEED LIMIT - [45]	Westbound	102	S	Salvage and Stockpile
163.48 - R	0.215	24	30	R2-1X: SPEED LIMIT - [55]	Eastbound	103	S	Salvage and Stockpile
163.48 - L	0.244	48	36	W14-3: NO PASSING ZONE	Eastbound	104	S	Salvage and Stockpile

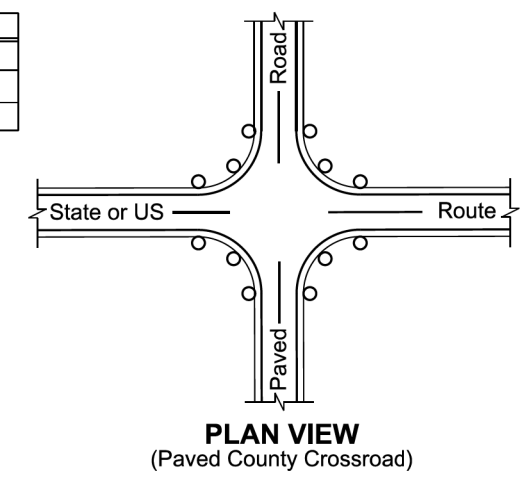


GENERAL NOTES:
Back-to-back delineation is required for two-way traffic, single-sided delineation for one-way traffic.

Published Date: 2025	S D D O T	DELINEATOR INSTALLATION DETAIL	March 31, 2024
			PLATE NUMBER 632.42
			Sheet 1 of 1



LEGEND	
◇	4" x 4" White Delineator
□	4" x 8" White Delineator
○	4" x 6" White Tubular Delineator



GENERAL NOTES:
At all intersections with State or US highways and paved county roads:
For radii greater than 100 feet, place 5 tubular white delineators on equally spaced posts around the turning radius.
For radii greater than 50 feet up to 100 feet, place 4 tubular white delineators on equally spaced posts around the turning radius.
For radii of 50 feet or less, place 3 tubular white delineators on equally spaced posts around the turning radius.

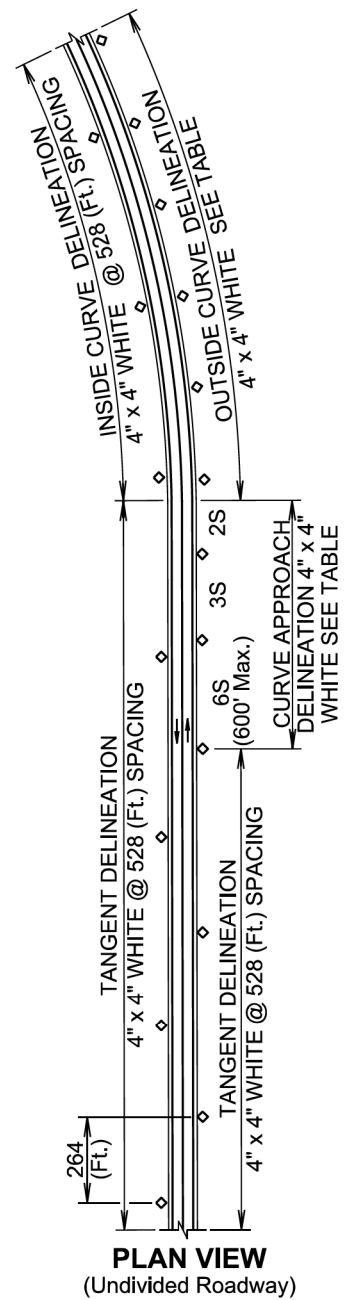
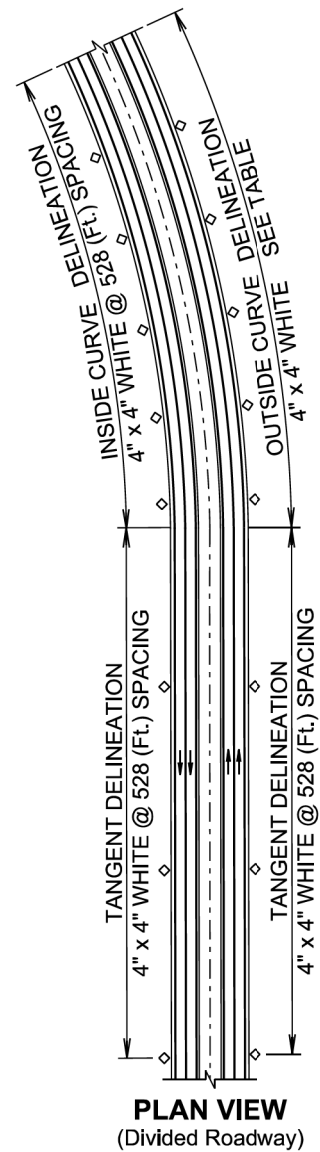
Published Date: 2025	S D D O T	DELINEATOR AT INTERSECTIONS	November 19, 2020
			PLATE NUMBER 632.44
			Sheet 1 of 1

PLOT SCALE - 1:217.147

PLOTTED FROM - TRPR25291

PLOT NAME - 1

FILE - ... \SECTIONS\STDPLATES.S: DGN


GENERAL NOTES:

Delineators will be located from 2 to 8 feet outside of the outer edge of shoulder. When a roadside barrier or other obstruction intrudes into the space between the pavement edge and the extension of the line of delineators, the delineators should be in line with the barrier or in line with the innermost edge of the obstruction.

When normal spacing is interrupted by driveways, crossroads, or approaches, delineators falling within such areas may be moved in either direction a distance not exceeding one-quarter of the standard spacing. Delineators still falling within such areas should be eliminated.

The spacing for specific radii may be interpolated from the table. The minimum spacing should be 20 feet. The spacing on curves should not exceed 300 feet. In advance of or beyond a curve, and proceeding away from the end of the curve, the spacing of the first delineator is 2S, the second 3S, and the third 6S, but not to exceed 300 feet. S refers to the delineator spacing for specific radii computed from the formula $S = 3\sqrt{R - 50}$. The distances for S shown in the table were rounded to the nearest 5 feet.

Curve approach delineation is not required if curve delineation spacing exceeds 100 ft.

Back-to-back delineation is required for two-way traffic, single-sided delineation for one-way traffic.

DELINEATOR SPACING OUTSIDE CURVE				
Radius of Curve (Ft.)	Curve Delineator Spacing (Ft.)	Curve Approach Spacing (Ft.)		
		A	B	C
50	20	40	65	125
115	25	50	75	150
150	30	60	90	180
180	35	70	110	215
250	40	85	125	250
300	45	95	140	285
400	55	110	170	300
500	65	125	190	300
600	70	140	210	300
700	75	150	230	300
800	80	165	245	300
900	85	175	260	300
1000	90	185	275	300

March 31, 2024

March 31, 2024

Published Date: 2025

**S
D
D
O
T**
DELINEATOR INSTALLATION SPACING

 PLATE NUMBER
632.46

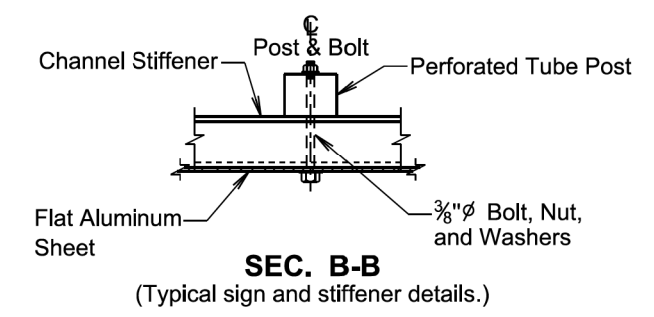
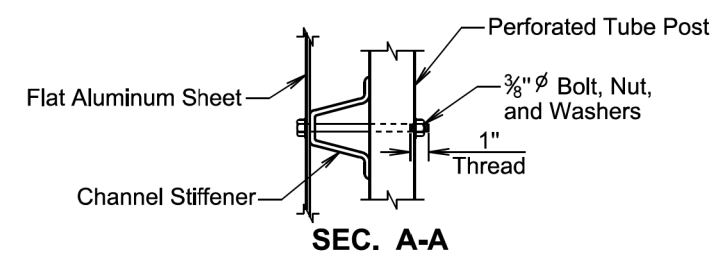
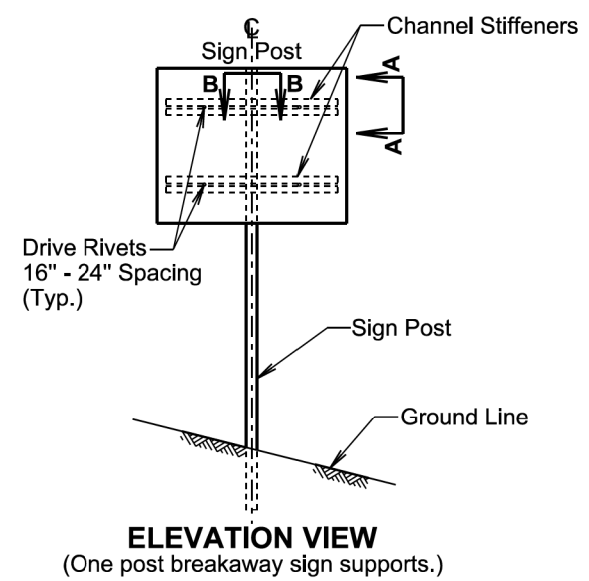
Sheet 1 of 2

Published Date: 2025

**S
D
D
O
T**
DELINEATOR INSTALLATION SPACING

 PLATE NUMBER
632.46

Sheet 2 of 2

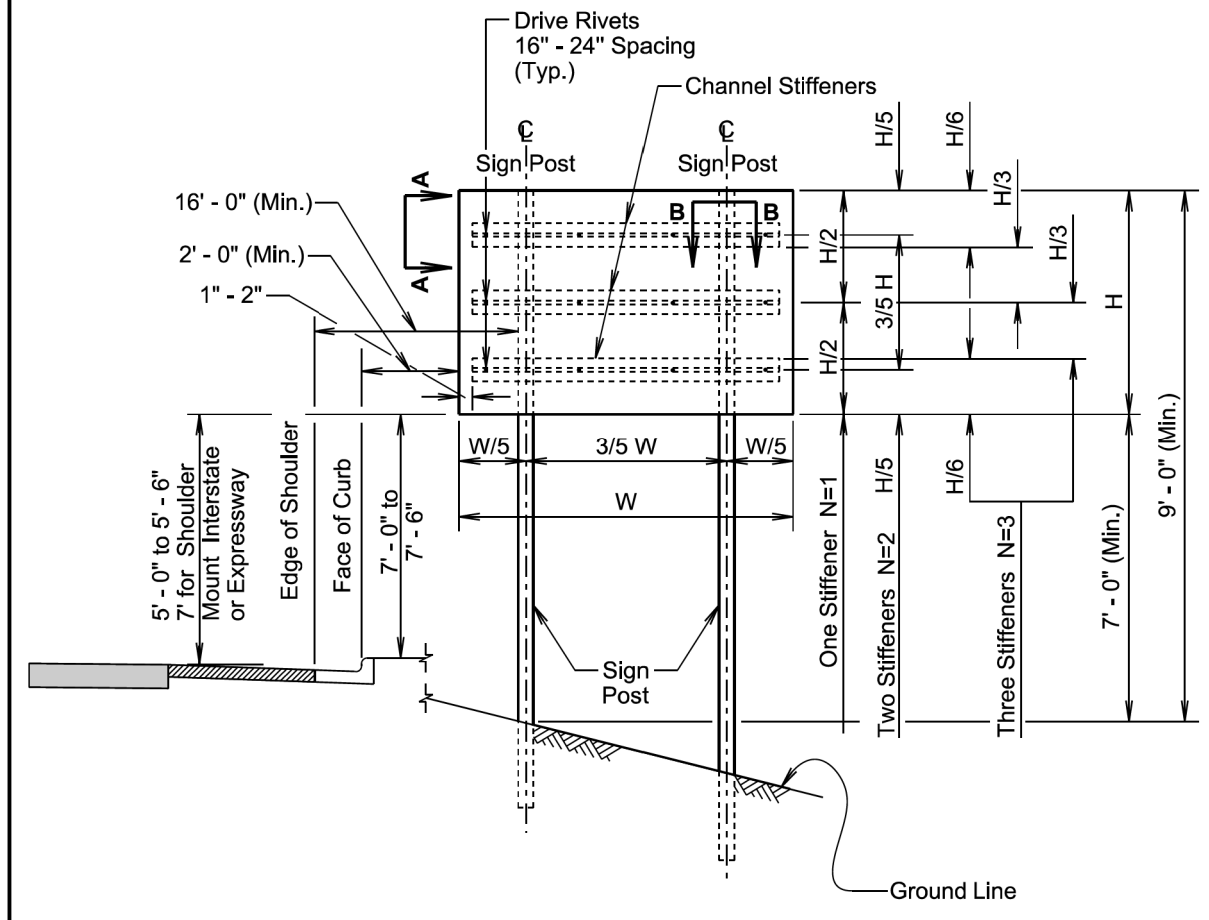


∅ A plastic washer, as recommended by the sheeting manufacturer, will be installed between the sign face and the metal washer shown.

November 19, 2020

S D D O T	SIGN STIFFENER DETAILS	PLATE NUMBER 632.60
		Sheet 1 of 2

Published Date: 2025



GENERAL NOTES:

The number of stiffeners used (N) will be as follows:
 If $H \leq 2' - 0''$ then $N = 1$
 if $2' - 0'' < H \leq 8' - 0''$ then $N = 2$
 if $8' - 0'' < H \leq 15' - 0''$ then $N = 3$
 where H is the vertical dimension of the sign.

A minimum of two bolts will be required to fasten the sign to each post.

November 19, 2020

S D D O T	SIGN STIFFENER DETAILS	PLATE NUMBER 632.60
		Sheet 2 of 2

Published Date: 2025

PLOT SCALE - 1:207-146

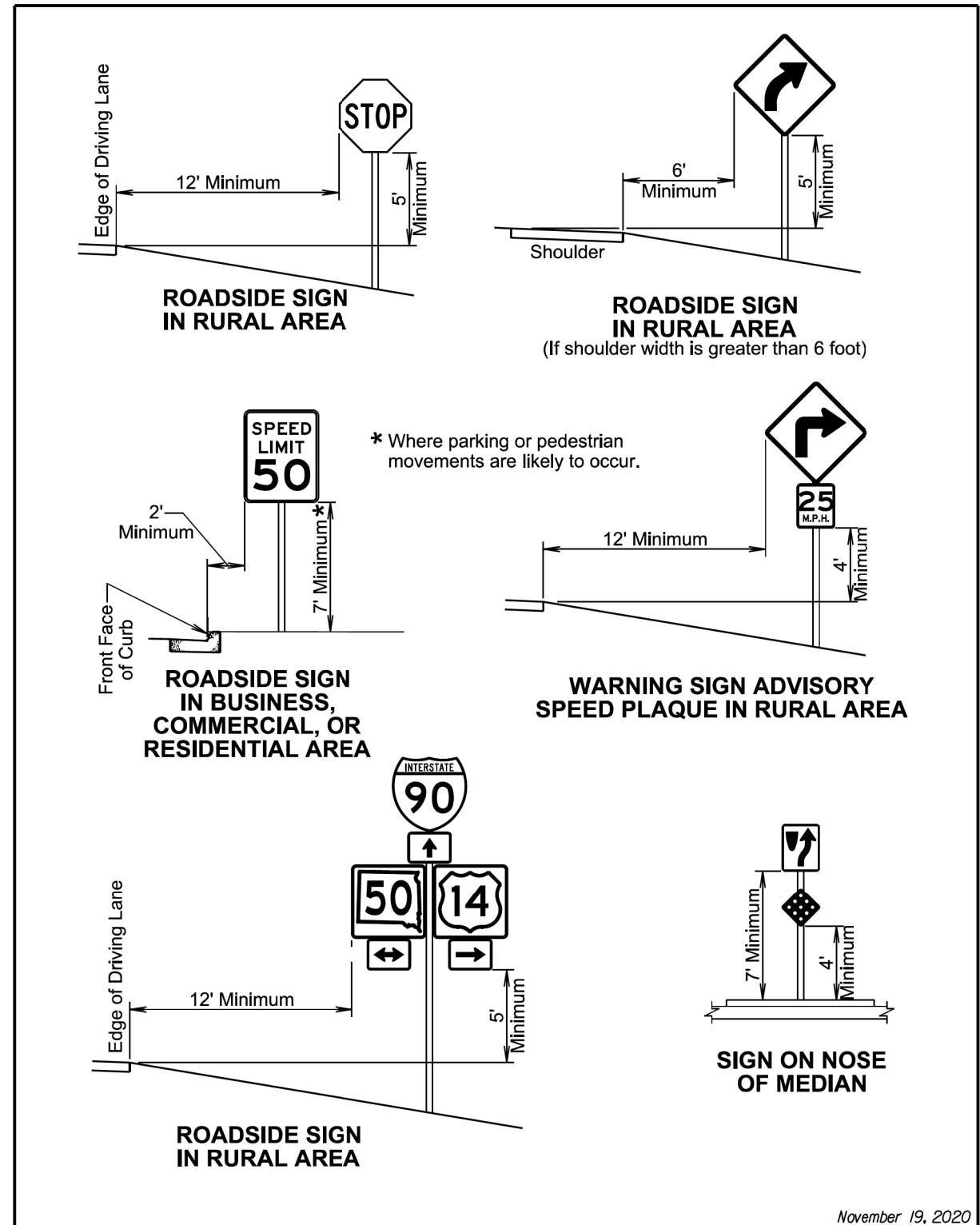
PLOT NAME - 1
FILE - ... \SECTIONS\STD\PLATES.S.DGN

PLOT SCALE - 1:207.146

STATE OF SOUTH DAKOTA	PROJECT	SHEET	TOTAL SHEETS
	NH 0073(73)62 P 0248(17)162	S10	S10
Plotting Date: 05/02/2022			

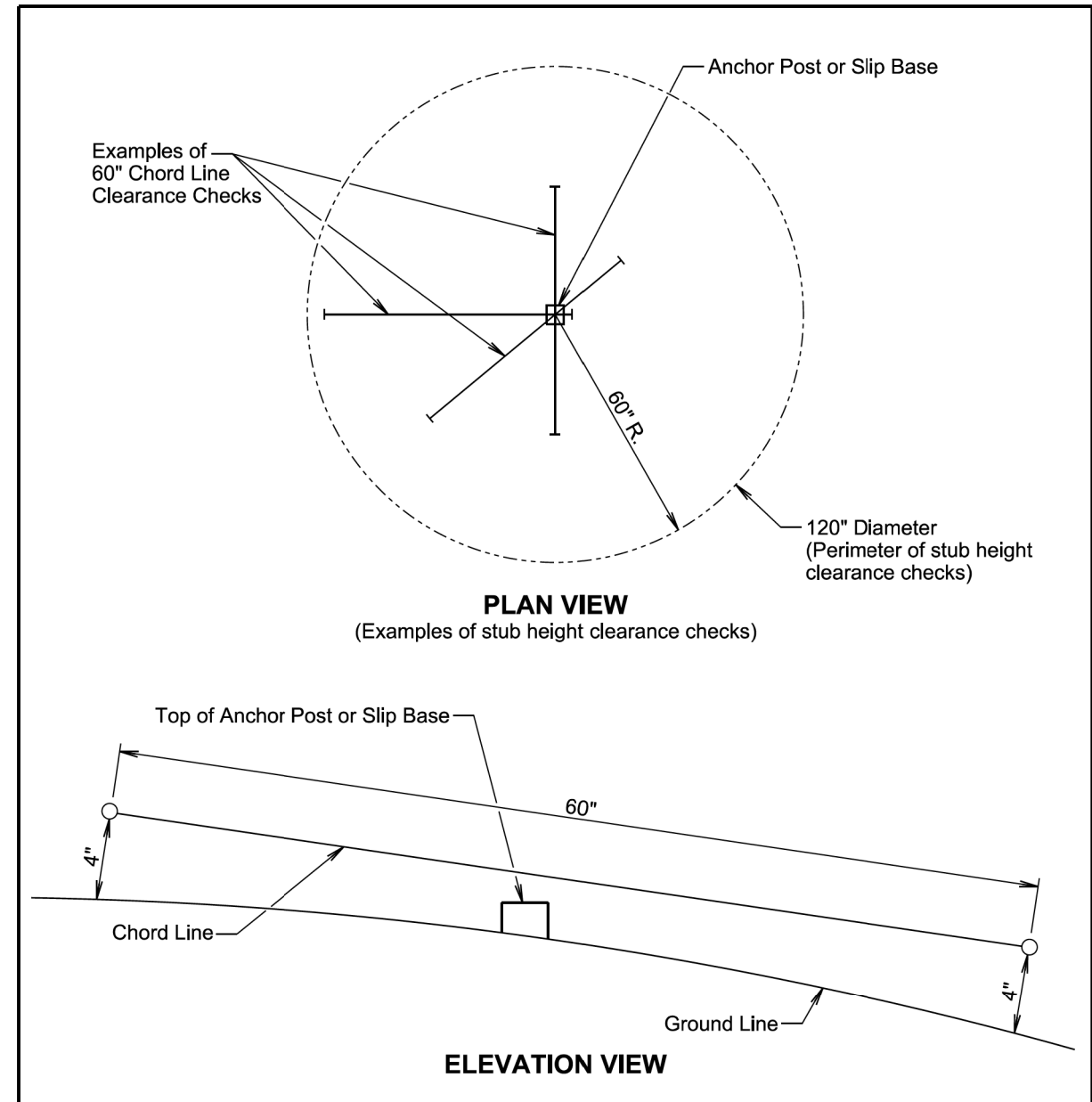
PLOT NAME - 1

FILE - ... \SECTIONS\STOPPLATES.S.DGN



November 19, 2020

Published Date: 2025	S D D O T	OFFSETS FOR SIGN INSTALLATION	PLATE NUMBER 632.90
			Sheet 1 of 1



GENERAL NOTES:

- The top of anchor posts and slip bases WILL NOT extend above a 60" chord line within a 120" diameter circle around the post with ends 4" above the ground.
- At locations where there is curb and gutter adjacent to the breakaway sign support, the stub height will be a maximum of 4" above the ground line at the localized area adjacent to the breakaway support stub.
- The 4" stub height clearance is not necessary for U-channel lap splices where the support is designed to yield (bend) at the base.

January 22, 2021

Published Date: 2025	S D D O T	BREAKAWAY SUPPORT STUB CLEARANCE	PLATE NUMBER 634.99
			Sheet 1 of 1

PLOTTED FROM - TRPR26291