

SECTION D: EROSION AND SEDIMENT CONTROL PLAN

STATE OF SOUTH DAKOTA	PROJECT	SHEET	TOTAL SHEETS
	P-CR 0046(73)366 P-CR 0011(152)34		

Plotting Date: 01/21/2025

INDEX OF SHEETS

- D1 General Layout with Index
- D2-D3 Estimate with General Notes and Tables
- D4-D7 Stormwater Pollution Prevention Plan Checklist
- D8 Dewatering and Sediment Collection System Details
- D9 SDDOT Construction Entrance Details
- D10-D12 Standard Plates

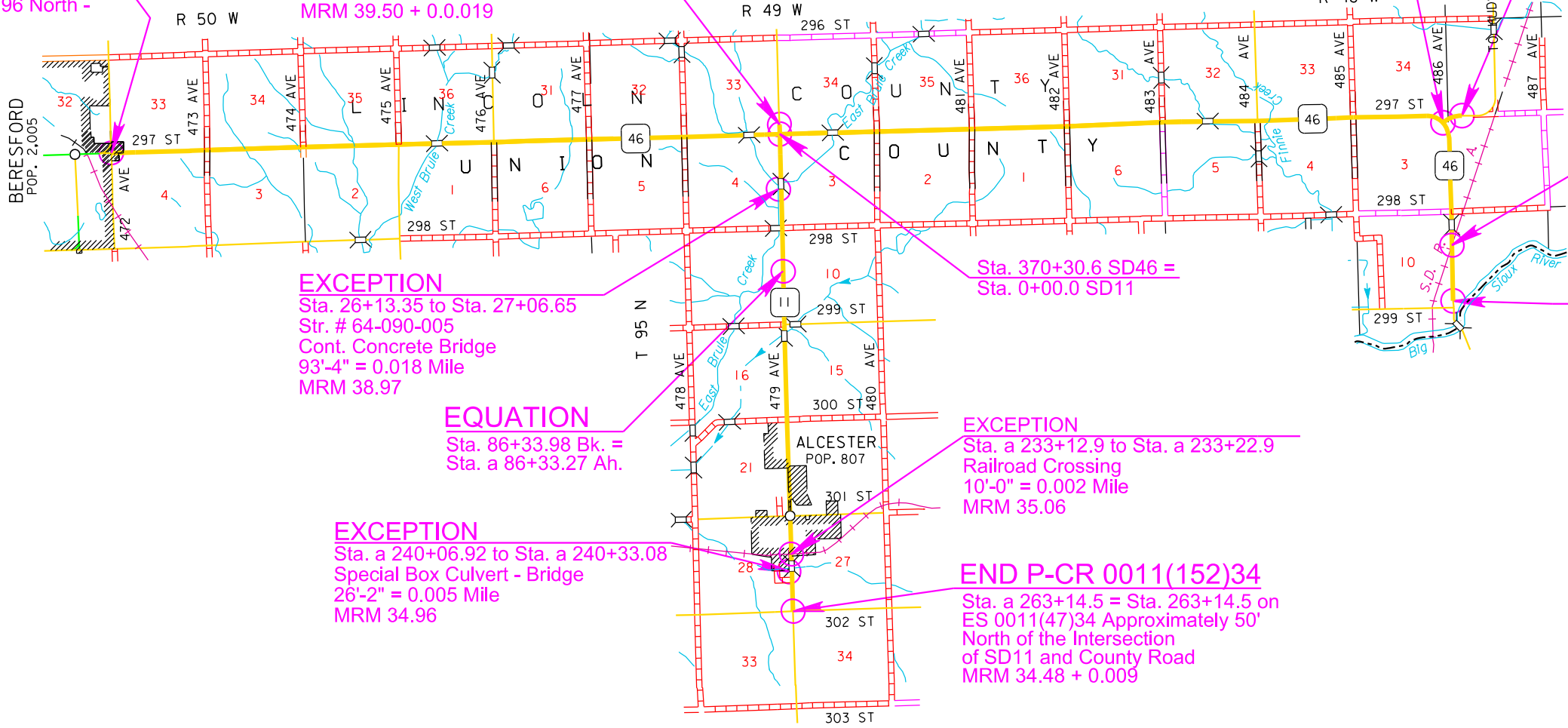


BEGIN P-CR 0046(73)366
Sta. 0+20.00 =Sta. 52+72.55 on
P 0046(48)365 Approximately 0.43 feet
South & 12.43 feet West of the Southeast
corner of Section 32 - Township 96 North -
Range 50 West 5th P.M.
MRM = 366.56+0.000

BEGIN P-CR 0011(152)34
Sta. 0+00.0 -102.5' on
ES 0011(47)34. Approximately
102.5' North of the Intersection
of SD11 and SD46
MRM 39.50 + 0.0019

BEGIN XR 735
Sta. 0+38.00
At 735+09.47 SD46

END XR 735
Sta. 13+60.00



EXCEPTION
Sta. 26+13.35 to Sta. 27+06.65
Str. # 64-090-005
Cont. Concrete Bridge
93'-4" = 0.018 Mile
MRM 38.97

EQUATION
Sta. 86+33.98 Bk. =
Sta. a 86+33.27 Ah.

EXCEPTION
Sta. a 240+06.92 to Sta. a 240+33.08
Special Box Culvert - Bridge
26'-2" = 0.005 Mile
MRM 34.96

Sta. 370+30.6 SD46 =
Sta. 0+00.0 SD11

EXCEPTION
Sta. a 233+12.9 to Sta. a 233+22.9
Railroad Crossing
10'-0" = 0.002 Mile
MRM 35.06

END P-CR 0011(152)34
Sta. a 263+14.5 = Sta. 263+14.5 on
ES 0011(47)34 Approximately 50'
North of the Intersection
of SD11 and County Road
MRM 34.48 + 0.009

EXCEPTION
Sta. 800+35.5 to Sta. 800+66.0
Railroad Crossing
30'-5" = 0.006 Mile
MRM 381.75

END P-CR 0046(73)366
Sta. 828+60.0 = Sta. 822+81.84 on
F 0046(00)366 Approximately 852.5 feet North
& 105.8 feet West of the Southeast corner of
Section 10 - Township 95 North - Range 48
West 5th P.M.
MRM = 382.00+0.123

1:200
Plot Scale -

Plotted From -
TRPR13525

05J5 SECTION D ESTIMATE OF QUANTITIES

BID ITEM NUMBER	ITEM	QUANTITY	UNIT
110E1690	Remove Sediment	4.6	CuYd
110E1693	Remove Erosion Control Wattle	500	Ft
110E1700	Remove Silt Fence	500	Ft
230E0100	Remove and Replace Topsoil	Lump Sum	LS
730E0212	Type G Permanent Seed Mixture	1,932	Lb
731E0200	Fertilizing	37.20	Ton
732E0100	Mulching	148.6	Ton
734E0044	Soil Stabilizer	13.0	Acre
734E0103	Type 3 Erosion Control Blanket	1,250	SqYd
734E0154	12" Diameter Erosion Control Wattle	2,000	Ft
734E0165	Remove and Reset Erosion Control Wattle	625	Ft
734E0602	Low Flow Silt Fence	2,000	Ft
734E0610	Mucking Silt Fence	139	CuYd
734E0620	Repair Silt Fence	500	Ft

06QY SECTION D ESTIMATE OF QUANTITIES

BID ITEM NUMBER	ITEM	QUANTITY	UNIT
110E1690	Remove Sediment	1.2	CuYd
110E1693	Remove Erosion Control Wattle	125	Ft
110E1700	Remove Silt Fence	125	Ft
230E0100	Remove and Replace Topsoil	Lump Sum	LS
730E0212	Type G Permanent Seed Mixture	11	Lb
731E0200	Fertilizing	0.20	Ton
732E0100	Mulching	0.9	Ton
734E0103	Type 3 Erosion Control Blanket	250	SqYd
734E0154	12" Diameter Erosion Control Wattle	500	Ft
734E0165	Remove and Reset Erosion Control Wattle	125	Ft
734E0602	Low Flow Silt Fence	500	Ft
734E0610	Mucking Silt Fence	35	CuYd
734E0620	Repair Silt Fence	125	Ft

REMOVE AND REPLACE TOPSOIL

For **PCN 05J5** the estimated amount of topsoil to be removed and replaced is 39,966 CuYd.

Prior to beginning resurfacing operations, a 4” depth of topsoil will be bladed down the respective inslope and left in a windrow 18.5’+/- from the subgrade shoulder. Following completion of resurfacing operations, topsoil will be bladed back up the inslope to the point indicated on the typical section.

For **PCN 06QY** it is anticipated that areas where topsoil will be removed and replaced is for guardrail embankment widening, and areas where pipe work is to be completed.

All costs associated with removing and replacing the topsoil along areas to be resurfaced will be incidental to the contract lump sum price for “Remove and Replace Topsoil”.

PERMANENT SEEDING

The areas to be seeded consist of all newly graded areas within the project limits except for the top of roadways and temporary easements under cultivation.

Type G Permanent Seed Mixture will consist of the following:

Grass Species	Variety	Pure Live Seed (PLS) (Pounds/Acre)
Western Wheatgrass	Arriba, Flintlock, Rodan, Rosana, Walsh	7
Switchgrass	Dacotah, Forestburg, Nebraska 28, Pathfinder, Summer, Sunburst, Trailblazer	3
Indiangrass	Holt, Tomahawk, Chief, Nebraska 54	3
Big Bluestem	Bison, Bonilla, Champ, Sunnyview, Rountree, Bonanza	3
Oats or Spring Wheat: April through May; Winter Wheat: August through November		10
Total:		26

EROSION CONTROL WATTLE

Erosion control wattles for restraining the flow of runoff and sediment will be installed at locations determined by the Engineer during construction. Refer to Standard Plate 734.06 for details.

The Contractor will provide certification that the erosion control wattles do not contain noxious weed seeds.

Erosion control wattles will remain on the project until vegetation has been established and then they will be removed in accordance with the Engineer.

An additional quantity of 12” Diameter Erosion Control Wattles has been added to the Estimate of Quantities for each PCN for temporary erosion and sediment control in highway ditch channels and as an alternative to low flow or high flow silt fence at wetland areas adjacent to the highway.

The erosion control wattle provided will be from the approved product list. The approved product list for erosion control wattle may be viewed at the following internet site:

<http://apps.sd.gov/HC60ApprovedProducts/main.aspx>

MULCHING (GRASS HAY OR STRAW)

If the Contractor uses a no-till drill, mulch may be applied prior to seeding and the mulch can then be punched into the soil by the no-till drill. If the Contractor uses this process, the no-till drill seeding will be completed immediately following the mulch application and the mulch will be punched into the soil at a 3-inch depth.

STATE OF SOUTH DAKOTA	PROJECT	SHEET	TOTAL SHEETS
	P-CR 0046(73)366 P-CR 0011(152)34	D2	D12

Plotting Date: 01/21/2025

FERTILIZING

The Contractor will apply an all-natural slow-release fertilizer prior to seeding or placing sod. The all-natural fertilizer will have a minimum guaranteed analysis of 4-4-4 and be USDA Certified BioBased. It should provide a minimum of 4% (N) nitrogen with a minimum water insoluble nitrogen (WIN) fraction of 2.07%, a minimum of 4% (P2O5) available phosphate, a minimum of 4% (K2O) soluble potash, and a maximum carbon to nitrogen ratio (C:N ratio) of 5:1. The all-natural fertilizer will be free of weed-seed and pathogens accomplished through thermophilic composting, and not mechanical or chemical sterilization, to assure presence of beneficial soil microbiology. The fertilizer will have a near neutral pH, a low salt index, a low biological oxygen demand, contain organic humic and fulvic acids, and have high aerobic organism counts. The fertilizer will also be stable, free of bad odors, and be unattractive as a food source for animals. It should also be in a granular form that is easily spread.

The fertilizer will be applied at a rate of 1,000 pounds per acre in accordance with the manufacturer’s recommended method of application.

The all-natural slow release fertilizer will be as shown below or an approved equal:

<http://apps.sd.gov/HC60ApprovedProducts/main.aspx>

MYCORRHIZAL INOCULUM

Mycorrhizal inoculum will consist of mycorrhizal fungi spores and mycorrhizal fungi-infected root fragments in a solid carrier. The carrier may include organic materials, calcinated clay, or other materials consistent with application and good plant growth. The supplier will provide certification of the fungal species claimed and the live propagule count. The inoculum will include a minimum 25% the fungal species *Rhizophagus intraradices*. The remaining 75% may include other endomycorrhizal fungal species.

All seed will be inoculated by the seed supplier with a minimum of 100,000 live propagules of mycorrhizal fungi per acre. All costs of inoculating the seed will be incidental to the contract unit price per pound for the corresponding permanent seed mixture.

The mycorrhizal inoculum will be as shown below or an approved equal:

The Mycorrhizal Inoculum provided will be from the approved product list. The approved product list may be viewed at the following internet site:

<http://apps.sd.gov/HC60ApprovedProducts/main.aspx>

File - ...pjt\Unin05\5\Notes\SectionD.dgn

1:200
Plot Scale -
Plotted From -

LOW FLOW SILT FENCE

The low flow silt fence fabric provided will be from the approved product list. The approved product list for low flow silt fence may be viewed at the following internet site:

<http://apps.sd.gov/HC60ApprovedProducts/main.aspx>

Low flow silt fence will be placed at the locations that will minimize siltation of adjacent streams, lakes, dams, or drainage areas as determined by the Engineer during construction. Refer to Standard Plate 734.04 for details.

An additional quantity of Low Flow Silt Fence has been added to the Estimate of Quantities for each PCN for temporary sediment control.

EROSION CONTROL BLANKET

Erosion control blanket will be installed 8 feet wide at the locations determined by the Engineer during construction.

The erosion control blanket provided will be from the approved product list. The approved product list for erosion control blanket may be viewed at the following internet site:

<http://apps.sd.gov/HC60ApprovedProducts/main.aspx>

An additional quantity of Type 3 Erosion Control Blanket has been added to the Estimate of Quantities for each PCN for temporary erosion control.

SOIL STABILIZER

An estimated quantity of 13 acres of soil stabilizer has been included in the **PCN 05J5** Estimate of Quantities. The soil stabilizer will be applied on areas deemed necessary by the Engineer, such as inslopes 3:1 and greater, for temporary stabilization.

The Contractor will apply soil stabilizer in accordance with the manufacturer’s application instructions and at the rate specified in the list of approved soil stabilizers.

Wood fiber mulch that contains a green dye will be mixed with the soil stabilizer to be used as a tracer when the soil stabilizer is applied hydraulically. Wood fiber mulch will be added at a rate of 300 pounds per acre to all of the approved soil stabilizers listed in the table except for the Pam-12 Plus product. The wood fiber mulch will be a 100% wood fiber product and does not need to contain a tackifier.

All costs for furnishing and applying the soil stabilizer including wood fiber mulch, hauling, materials, equipment, labor, and incidentals necessary will be paid for at the contract unit price per Acre for “Soil Stabilizer”.

The Soil Stabilizer provided will be from the approved product list. The approved product list may be viewed at the following internet site:

<http://apps.sd.gov/HC60ApprovedProducts/main.aspx>

DEWATERING AND SEDIMENT COLLECTING

The Contactor has the option to treat sediment laden water trapped within the project limits or the Contractor may elect to transport sediment laden water off the project. Refer to the OPTIONS FOR DEWATERING AND SEDIMENT COLLECTING detail sheet for more information.

Water transported off the project limits will not be disposed of in an area where it can enter a waterway. The disposal site must be approved by the Engineer.

Separate payment will not be made for any Dewatering and Sediment Collection efforts. All costs involved with necessary Dewatering and Sediment Collection efforts will be incidental to other contract items

CONSTRUCTION ENTRANCE

The Contractor will install a Construction Entrance at locations where there is a potential for mud tracking and sediment flow from the construction site and work area onto a paved public roadway.

It is the Contractor’s option to use the SDDOT Construction Entrance (See SDDOT Construction Entrance notes and details), a product from the list provided in these notes, or other products or processes as approved by the Engineer during construction.

If the Contractor elects to use one of the products listed in the table, then the Contractor will install the construction entrance product in accordance with the manufacturer’s installation instructions or as directed by the Engineer.

The Contractor will maintain the construction entrance such that mud tracking and sediment flow will not enter the roadway or adjacent drainage areas. The construction entrance will be routinely inspected, and the Contractor will repair or replace material as deemed necessary by the Engineer.

If necessary, all costs for furnishing, installing, maintaining, and removal of the construction entrance including equipment, labor, materials, and incidentals will be included in the contract unit price per each for “Construction Entrance”.

The Construction Entrance provided will be from the approved product list. The approved product list may be viewed at the following internet site:

<http://apps.sd.gov/HC60ApprovedProducts/main.aspx>

STATE OF SOUTH DAKOTA	PROJECT	SHEET	TOTAL SHEETS
	P-CR 0046(73)366 P-CR 0011(152)34	D3	D12

Plotting Date: 01/21/2025

SDDOT CONSTRUCTION ENTRANCE

If the SDDOT Construction Entrance is utilized, then the Contractor will install the SDDOT Construction Entrance in accordance with these notes and the detail drawings.

Pit run material will be obtained from a granular source and will conform to the following gradation:

Sieve Size	Percent Passing
6”	100%
#4	0-60%
#200	0-20%

The pit run material will be compacted to the satisfaction of the Engineer.

The aggregate for the granular material will conform to the following gradation requirements:

Sieve Size	Percent Passing
3”	100%
2 ½”	90-100%
1 ½”	25-60%
¾”	0-10%
½”	0-5%

The granular material will be placed in 6” maximum lifts.

It is anticipated that the granular material will need to be periodically removed and replaced as it becomes inundated with mud and sediment.

The Reinforcement Fabric (MSE) will be in conformance with Section 831 of the Specifications. The Reinforcement Fabric (MSE) will be on the Approved Products List for this material or will be certified by the supplier to meet this specification prior to installation.

The Reinforcement Fabric (MSE) should be kept as taut as possible prior to placing.

Equipment will not be allowed on the Reinforcement Fabric (MSE) until the first lift of granular material is in place.

All seams in the Reinforcement Fabric (MSE) will be overlapped at least 2’ and shingled.

File - ...[p]lUnin0515NotesSectionD.dgn

1:200
Plot Scale -
Plotted From -

STORMWATER POLLUTION PREVENTION PLAN CHECKLIST
*(The numbers left of the title headings are **reference numbers** to the **GENERAL PERMIT FOR STORM WATER DISCHARGES ASSOCIATED WITH CONSTRUCTION ACTIVITIES** (Stormwater Permit))*

5.3 (2): STAFF TRAINING/SWPPP IMPLEMENTATION

To promote stormwater management awareness specific for this project, the Contractor's Erosion Control Supervisor should provide correspondence of how the SWPPP will be implemented. The Contractor's Erosion Control Supervisor is responsible for providing this information at the preconstruction meeting, and subsequently completing an attendance log, which should identify site-specific implementation of the SWPPP and the names of the personnel who attended the preconstruction meeting. Documentation of the preconstruction meeting will be filed with the SWPPP documents.

5.3 (3): DESCRIPTION OF CONSTRUCTION ACTIVITIES

- **5.3 (3a): Project Limits** (See Title Sheet)
- **5.3 (3a): Project Description** (See Title Sheet)
- **5.3 (4): Site Map(s)** (See Title Sheet and Plans)
- **Major Soil Disturbing Activities** (check all that apply)
 - ☐ Clearing and grubbing
 - ☐ Excavation/borrow
 - ☐ Grading and shaping
 - ☐ Filling
 - ☒ Other (describe): PCC surfacing, AC surfacing, resurfacing, cold milling asphalt concrete, culvert work, guardrail
- **5.3 (3b): Total Project Area** 124.4 Acres
- **5.3 (3b): Total Area to be Disturbed** 24.1
- **5.3 (3c): Maximum Area Disturbed at One Time**
- **5.3 (3d): Existing Vegetative Cover** 85%
- **5.3 (3d): Description of Vegetative Cover** Typical eastern SD native and introduced roadside vegetation
- **5.3 (3e): Soil Properties:** Clay silt, silt clay
- **5.3 (3f): Name of Receiving Water Body/Bodies** East and West Brule Creek
- **5.3 (3g): Location of Construction Support Activity Areas**

5.3 (3h): ORDER OF CONSTRUCTION ACTIVITIES

- **Special sequencing requirements** (see Section C).
The Contractor will enter the Estimated Start Date.

Description	Estimated Start Date
Install perimeter protection where runoff may exit site.	
Install perimeter protection around stockpiles.	
Clearing and grubbing.	
Remove and stockpile topsoil.	
Stabilize disturbed areas.	
Final grading.	
Final paving.	
Removal of protection devices.	
Reseed areas disturbed by removal activities.	

5.3 (5): DESCRIPTION AND MAINTENANCE OF CONTROL MEASURES

All controls will be maintained in good working order. Necessary repairs will be initiated within 24 hours of the site inspection report. Include the technical reasoning for selecting each control. (Check all that apply)

Perimeter Controls (See Detail Plan Sheets)	
Description	Estimated Start Date
<input checked="" type="checkbox"/> Natural Buffers (within 50 ft of Waters of State)	
<input checked="" type="checkbox"/> Silt Fence	
<input checked="" type="checkbox"/> Erosion Control Wattles	
<input type="checkbox"/> Temporary Berm / Windrow	
<input type="checkbox"/> Floating Silt Curtain	
<input type="checkbox"/> Stabilized Construction Entrances	
<input type="checkbox"/> Entrance/Exit Equipment Tire Wash	
<input type="checkbox"/> Other:	

Structural Erosion and Sediment Controls	
Description	Estimated Start Date
<input type="checkbox"/> Silt Fence	
<input type="checkbox"/> Temporary Berm/Windrow	
<input type="checkbox"/> Erosion Control Wattles	
<input type="checkbox"/> Temporary Sediment Barriers	
<input type="checkbox"/> Erosion Bales	
<input type="checkbox"/> Temporary Slope Drain	
<input type="checkbox"/> Turf Reinforcement Mat	
<input type="checkbox"/> Riprap	
<input type="checkbox"/> Gabions	
<input type="checkbox"/> Rock Check Dams	
<input type="checkbox"/> Sediment Traps/Basins	
<input type="checkbox"/> Culvert Inlet Protection	
<input type="checkbox"/> Transition Mats	
<input type="checkbox"/> Median/Area Drain Inlet Protection	
<input type="checkbox"/> Curb Inlet Protection	
<input type="checkbox"/> Interceptor Ditch	
<input type="checkbox"/> Concrete Washout Facility	
<input type="checkbox"/> Work Platform	
<input type="checkbox"/> Temporary Water Barrier	
<input type="checkbox"/> Temporary Water Crossing	
<input type="checkbox"/> Permanent Stormwater Ponds	
<input type="checkbox"/> Permanent Open Vegetated Swales	
<input type="checkbox"/> Natural Depressions to allow for Infiltration	
<input type="checkbox"/> Sequential Systems that combine several practices	
<input type="checkbox"/> Other:	

STATE OF SOUTH DAKOTA	PROJECT	SHEET	TOTAL SHEETS
	P-CR 0046(73)366 P-CR 0011(152)34	D4	D12

Plotting Date: 01/21/2025

Dust Controls	
Description	Estimated Start Date
<input type="checkbox"/> Tarps & Wind impervious fabrics	
<input type="checkbox"/> Watering	
<input type="checkbox"/> Stockpile location/orientation	
<input type="checkbox"/> Dust Control Chlorides	
<input type="checkbox"/> Other	

Dewatering BMPs	
Description	Estimated Start Date
<input type="checkbox"/> Sediment Basins	
<input type="checkbox"/> Dewatering bags	
<input type="checkbox"/> Weir tanks	
<input type="checkbox"/> Temporary Diversion Channel	
<input type="checkbox"/> Other:	

Stabilization Practices (See Detail Plan Sheets)
(Stabilization measures will begin the following work day whenever earth disturbing activity on any portion of the site has temporarily or permanently ceased. Temporary stabilization will be completed as soon as practicable but no later than 14 days after initiating soil stabilization activities **(3.18)**)

Description	Estimated Start Date
<input type="checkbox"/> Vegetation Buffer Strips	
<input type="checkbox"/> Temporary Seeding (Cover Crop Seeding)	
<input checked="" type="checkbox"/> Permanent Seeding	
<input type="checkbox"/> Sodding	
<input type="checkbox"/> Planting (Woody Vegetation for Soil Stabilization)	
<input checked="" type="checkbox"/> Mulching (Grass Hay or Straw)	
<input type="checkbox"/> Fiber Mulching (Wood Fiber Mulch)	
<input checked="" type="checkbox"/> Soil Stabilizer	
<input type="checkbox"/> Bonded Fiber Matrix	
<input type="checkbox"/> Fiber Reinforced Matrix	
<input checked="" type="checkbox"/> Erosion Control Blankets	
<input type="checkbox"/> Surface Roughening (e.g. tracking)	
<input type="checkbox"/> Other:	

Wetland Avoidance
Will construction and/or erosion and sediment controls impinge on regulated wetlands? Yes ☐ No ☒ If yes, the structural and erosion and sediment controls have been included in the total project wetland impacts and have been included in the 404 permit process with the USACE.

5.3 (6): PROCEDURES FOR INSPECTIONS

- Inspections will be conducted at least once every 7 days.
- All controls will be maintained in good working order. Necessary repairs will be initiated within 24 hours of the site inspection report.
- Silt fence will be inspected for depth of sediment and for tears to ensure the fabric is securely attached to the posts and that the posts are well anchored. Sediment buildup will be removed from the silt fence when it reaches 1/3 of the height of the silt fence.
- Sediment basins and traps will be checked. Sediment will be removed when depth reaches approximately 50 percent of the structure’s capacity, and at the conclusion of the construction.
- Check dams will be inspected for stability. Sediment will be removed when depth reaches 1/2 the height of the dam.
- All seeded areas will be checked for bare spots, washouts, and vigorous growth free of significant weed infestations.
- Inspection and maintenance reports will be prepared on form DOT 298 for each site inspection, this form will also be used to document changes to the SWPPP. A copy of the completed inspection form will be filed with the SWPPP documents.
- The SDDOT Project Engineer and Contractor’s Erosion Control Supervisor are responsible for inspections. Maintenance and repair activities are the responsibility of the Contractor. The SDDOT Project Engineer will complete the inspection and maintenance reports and distribute copies per the distribution instructions on DOT 298.

5.3 (7): POST CONSTRUCTION STORMWATER MANAGEMENT

Stormwater management will be handled by temporary controls outlined in “DESCRIPTION AND MAINTENANCE OF CONTROL MEASURES” above, and any permanent controls needed to meet permanent stormwater management needs in the post construction period will be shown in the plans and noted as permanent.

5.3 (8): POLLUTION PREVENTION PROCEDURES

5.3 (8a): Spill Prevention and Response Procedures

- **Material Management**
 - Housekeeping
 - Only needed products will be stored on-site by the Contractor.
 - Except for bulk materials the contractor will store all materials under cover and/or in appropriate containers.
 - Products must be stored in original containers and labeled.
 - Material mixing will be conducted in accordance with the manufacturer’s recommendations.
 - When possible, all products will be completely used before properly disposing of the container off-site.
 - The manufacturer’s directions for disposal of materials and containers will be followed.
 - The Contractor’s site superintendent will inspect materials storage areas regularly to ensure proper use and disposal.
 - Dust generated will be controlled in an environmentally safe manner.
 - Hazardous Materials
 - Products will be kept in original containers unless the container is not resealable and provide secondary containment as applicable.
 - Original labels and material safety data sheets will be retained in a safe place to relay important product information.
 - If surplus product must be disposed of, manufacturer’s label directions for disposal will be followed.

- Maintenance and repair of all equipment and vehicles involving oil changes, hydraulic system drain down, de-greasing operations, fuel tank drain down and removal, and other activities which may result in the accidental release of contaminants will be conducted on an impervious surface and under cover during wet weather to prevent the release of contaminants onto the ground.
- Wheel wash water will be collected and allowed to settle out suspended solids prior to discharge. Wheel wash water will not be discharged directly into any stormwater system or stormwater treatment system.
- Potential pH-modifying materials such as: bulk cement, cement kiln dust, fly ash, new concrete washings, concrete pumping, residuals from concrete saw cutting (either wet or dry), and mixer washout waters will be collected on site and managed to prevent contamination of stormwater runoff.

➤ **Spill Control Practices**

In addition to the previous housekeeping and management practices, the following practices will be followed for spill prevention and cleanup if needed.

- For all hazardous materials stored on site, the manufacturer’s recommended methods for spill cleanup will be clearly posted. Site personnel will be made aware of the procedures and the locations of the information and cleanup supplies.
- Appropriate cleanup materials and equipment will be maintained by the Contractor in the materials storage area on-site. As appropriate, equipment and materials may include items such as brooms, dust pans, mops, rags, gloves, goggles, kitty litter, sand, sawdust, and plastic and metal trash containers specifically for cleanup purposes.
- All spills will be cleaned immediately after discovery and the materials disposed of properly.
- The spill area will be kept well ventilated and personnel will wear appropriate protective clothing to prevent injury from contact with a hazardous substance.
- After a spill a report will be prepared describing the spill, what caused it, and the cleanup measures taken. The spill prevention plan will be adjusted to include measures to prevent this type of spill from reoccurring, as well as clean up instructions in the event of reoccurrences.
- The Contractor’s site superintendent, responsible for day-to-day operations, will be the spill prevention and cleanup coordinator.

➤ **Spill Response**

The primary objective in responding to a spill is to quickly contain the material(s) and prevent or minimize migration into stormwater runoff and conveyance systems. If the release has impacted on-site stormwater, it is critical to contain the released materials on-site and prevent their release into receiving waters. If a spill of pollutants threatens stormwater or surface water at the site, the spill response procedures outlined below must be implemented in a timely manner to prevent the release of pollutants.

- The Contractor’s site superintendent will be notified immediately when a spill or the threat of a spill is observed. The superintendent will assess the situation and determine the appropriate response.
- If spills represent an imminent threat of escaping erosion and sediment controls and entering receiving waters, personnel will be directed to respond immediately to contain the release and notify the superintendent after the situation has been stabilized.

- Spill kits containing appropriate materials and equipment for spill response and cleanup will be maintained by the Contractor at the site.
- If oil sheen is observed on surface water (e.g. settling ponds, detention ponds, swales), action will be taken immediately to remove the material causing the sheen. The Contractor will use appropriate materials to contain and absorb the spill. The source of the oil sheen will also be identified and removed or repaired as necessary to prevent further releases.
- If a spill occurs the superintendent or the superintendent’s designee will be responsible for completing the spill reporting form and for reporting the spill to SDDANR.
- Personnel with primary responsibility for spill response and cleanup will receive training by the Contractor’s site superintendent or designee. The training must include identifying the location of the spill kits and other spill response equipment and the use of spill response materials.
- Spill response equipment will be inspected and maintained as necessary to replace any materials used in spill response activities.

5.3 (8b): WASTE MANAGEMENT PROCEDURES

➤ **Waste Disposal**

- All liquid waste materials will be collected and stored in approved sealed containers. All trash and construction debris from the site will be deposited in the approved containers. Containers will be serviced as necessary, and the trash will be hauled to an approved disposal site or licensed landfill. All onsite personnel will be instructed in the proper procedures for waste disposal and notices stating proper practices will be posted. The Contractor is responsible for ensuring waste disposal procedures are followed.

➤ **Hazardous Waste**

- All hazardous waste materials will be disposed of in a manner specified by local or state regulations or by the manufacturer. Site personnel will be instructed in these practices, and the Contractor will be responsible for seeing that these practices are followed.

➤ **Sanitary Waste**

- Portable sanitary facilities will be provided on all construction sites. Sanitary waste will be collected from the portable units which must be secured to prevent tipping and serviced in a timely manner by a licensed waste management Contractor or as required by any local regulations.

STATE OF SOUTH DAKOTA	PROJECT	SHEET	TOTAL SHEETS
	P-CR 0046(73)366 P-CR 0011(152)34		

Plotting Date: 01/21/2025

5.3 (9): CONSTRUCTION SITE POLLUTANTS

The following materials or substances are expected to be present on the site during the construction period. These materials will be handled as noted under the heading “POLLUTION PREVENTION PROCEDURES” (check all that apply).

- ☒ Concrete and Portland Cement
- ☐ Detergents
- ☒ Paints
- ☒ Metals
- ☐ Bituminous Materials
- ☒ Petroleum Based Products
- ☐ Diesel Exhaust Fluid
- ☐ Cleaning Solvents
- ☒ Wood
- ☐ Cure
- ☐ Texture
- ☐ Chemical Fertilizers
- ☐ Other:

Product Specific Practices

- **Petroleum Products**
All on-site vehicles will be monitored for leaks and receive regular preventive maintenance to reduce the chance of leakage. Petroleum products will be stored in tightly sealed containers which are clearly labeled.
- **Fertilizers**
Fertilizers will be applied only in the amounts specified by the SDDOT. Once applied, fertilizers will be worked into the soil to limit the exposure to stormwater. Fertilizers will be stored in an enclosed area. The contents of partially used fertilizer bags will be transferred to sealable containers to avoid spills.
- **Paints**
All containers will be tightly sealed and stored when not required for use. The excess will be disposed of according to the manufacturer's instructions and any applicable state and local regulations.
- **Concrete Trucks**
Contractors will provide designated truck washout facilities on the site. These areas must be self-contained and not connected to any stormwater outlet of the site. Upon completion of construction, the area at the washout facility will be properly stabilized.

5.3 (10): NON-STORMWATER DISCHARGES

The following non-stormwater discharges are anticipated during the course of this project (check all that apply).

- ☐ Discharges from water line flushing.
- ☐ Pavement wash-water, where no spills or leaks of toxic or hazardous materials have occurred.
- ☐ Uncontaminated ground water associated with dewatering activities.

5.3 (11): INFEASIBILITY DOCUMENTATION

If it is determined to be infeasible to comply with any of the requirements of the Stormwater Permit, the infeasibility determination must be thoroughly documented in the SWPPP.

7.0: SPILL NOTIFICATION

In the event of a spill, the Contractor's site superintendent will make the appropriate notification(s), consistent with the following procedures:

- A release or spill of a regulated substance (includes petroleum and petroleum products) must be reported to SDDANR immediately **if any one of the following** conditions exists:
 - The release or spill threatens or is able to threaten waters of the state (surface water or ground water)
 - The release or spill causes an immediate danger to human health or safety
 - The release or spill exceeds 25 gallons
 - The release or spill causes a sheen on surface water
 - The release or spill of any substance that exceeds the ground water quality standards of ARSD Chapter 74:54:01
 - The release or spill of any substance that exceeds the surface water quality standards of ARSD Chapter 74:51:01
 - The release or spill of any substance that harms or threatens to harm wildlife or aquatic life
 - The release or spill is required to be reported according to Superfund Amendments and Reauthorization Act (SARA) Title III List of Lists, Consolidated List of Chemicals Subject to Reporting Under the Emergency Planning and Community Right to Know Act, US Environmental Protection Agency.
- To report a release or spill, call SDDANR at 605-773-3296 during regular office hours (8 a.m. to 5 p.m. Central Standard Time). To report the release after hours, on weekends or holidays, call South Dakota Emergency Management at 605-773-3231. Reporting the release to SDDANR does not meet any obligation for reporting to other state, local, or federal agencies. Therefore, you must also contact local authorities to determine the local reporting requirements for releases. A written report of the unauthorized release of any regulated substance, including quantity discharged, and the location of the discharge will be sent to SDDANR within 14 days of the discharge.

STATE OF SOUTH DAKOTA	PROJECT	SHEET	TOTAL SHEETS
	P-CR 0046(73)366 P-CR 0011(152)34	D6	D12

Plotting Date: 01/21/2025

STATE OF SOUTH DAKOTA	PROJECT	SHEET	TOTAL SHEETS
	P-CR 0046(73)366 P-CR 0011(152)34		

Plotting Date: 01/21/2025

5.4: SWPPP CERTIFICATIONS

➤ Certification of Compliance with Federal, State, and Local Regulations

The Storm Water Pollution Prevention Plan (SWPPP) for this project reflects the requirements of all local municipal jurisdictions for storm water management and sediment and erosion control as established by ordinance, as well as other state and federal requirements for sediment and erosion control plans, permits, notices or documentation as appropriate.

➤ South Dakota Department of Transportation

I certify under penalty of law that this document and all attachments were prepared under my direction or supervision in accordance with a system designed to assure that qualified personnel properly gather and evaluate the information submitted. Based on my inquiry of the person or persons who manage the system, or those persons directly responsible for gathering the information, the information submitted is, to the best of my knowledge and belief, true, accurate, and complete. I am aware that there are significant penalties for submitting false information, including the possibility of fine and imprisonment for knowing violations.

Authorized Signature (See the General Permit, Section 7.4 (1))

➤ Prime Contractor

This section is to be executed by the General Contractor after the award of the contract. This section may be executed any time there is a change in the Prime Contractor of the project.

I certify under penalty of law that this document and all attachments will be revised or maintained under my direction or supervision in accordance with a system designed to assure that qualified personnel properly gather and evaluate the information submitted. Based on my inquiry of the person or persons who manage the system, or those persons directly responsible for gathering the information, the information submitted is, to the best of my knowledge and belief, true, accurate, and complete. I am aware that there are significant penalties for submitting false information, including the possibility of fine and imprisonment for knowing violations.

Authorized Signature

CONTACT INFORMATION

The following personnel are duly authorized representatives and have signatory authority for modifications made to the SWPPP:

➤ Contractor Information:

- Prime Contractor Name: _____
- Contractor Contact Name: _____
- Address: _____
- _____
- City: _____ State: _____ Zip: _____
- Office Phone: _____ Field: _____
- Cell Phone: _____ Fax: _____

➤ Erosion Control Supervisor

- Name: _____
- Address: _____
- _____
- City: _____ State: _____ Zip: _____
- Office Phone: _____ Field: _____
- Cell Phone: _____ Fax: _____

➤ SDDOT Project Engineer

- Name: _____
- Business Address: _____
- Job Office Location: _____
- City: _____ State: _____ Zip: _____
- Office Phone: _____ Field: _____
- Cell Phone: _____ Fax: _____

➤ SDDANR Contact Spill Reporting

- Business Hours Monday-Friday (605) 773-3296
- Nights and Weekends (605) 773-3231

➤ SDDANR Contact for Hazardous Materials.

- (605) 773-3153

➤ National Response Center Hotline

- (800) 424-8802.

➤ SDDANR Stormwater Contact Information

- SDDANR Stormwater (800) 737-8676
- Surface Water Quality Program (605) 773-3351

5.5: REQUIRED SWPPP MODIFICATIONS

➤ 5.5 (1): Conditions Requiring SWPPP Modification

The SWPPP must be modified, including the site map(s), in response to any of the following conditions:

- When a new operator responsible for implementation of any part the SWPPP begins work on the site.
- When changes to the construction plans, sediment and erosion control measures, or any best management practices on site that are no longer accurately reflected in the SWPPP. This includes changes made in response to corrective actions triggered by inspections.
- To reflect areas on the site map where operational control has been transferred (including the date of the transfer) or has been covered under a new permit since initiating coverage under this general permit.
- If inspections by site staff, local officials, SDDANR, or U.S. EPA determine that SWPPP modifications are necessary for compliance with the Stormwater Permit.
- To reflect any revisions to applicable federal, state, or local requirements that affect the control measures implemented at the site.
- If approved by the Secretary, to reflect any changes in chemical water treatment systems or controls, including the use of a different water treatment chemical, age rates, different areas, or methods of application.

➤ 5.5 (2): Deadlines for SWPPP Modification

Any required revisions to the SWPPP must be completed within 7 calendar days following any of the items listed above.

➤ 5.5 (3): Documentation of Modifications to the Plan

All SWPPP modification records are required to be maintained showing the dates of when the modification occurred. The records must include the name of the person authorizing each change and a brief summary of all changes.

➤ 5.5 (4): Certification Requirements

All modifications made to the SWPPP must be signed and certified as required in Section 7.4.

➤ 5.5 (5): Required Notice to Other Operators

If there are multiple operators at the site, the Contractor's Erosion Control Supervisor must notify each operator that may be impacted by the change to the SWPPP within 24 hours.

When modifications as described above occur, the SWPPP will be modified to provide appropriate protection to disturbed areas, all storm water structures, and adjacent waters. The SDDOT Project Engineer will modify the SWPPP using the DOT 298 form and drawings on the plan will be modified to reflect the needed changes. Copies of the DOT 298 forms and the SWPPP will be retained on site in a designated place for review throughout the course of the project. A copy of the DOT 298 form will be given to the Contractor Erosion Control Supervisor and a copy will be emailed to the SDDOT Environmental Section in accordance with the DOT 298 Form.

Plot Scale - 1:300

Plotted From = TRPR13525

File - ... \rd\prj\Unin05J5\Dewatering.dgn

Plotting Date: 01/21/2025

Dry Flocculent Mixing System
Innovative Equipment Solutions
 Hot Springs, Arkansas
 Phone: 1.501.525.8484
<http://www.neptunewash.com>

Figure 1



If embankment is necessary it will be pit run material.

Existing Surface

15' (Min.)

12" of Granular Material

12" Pit Run Material

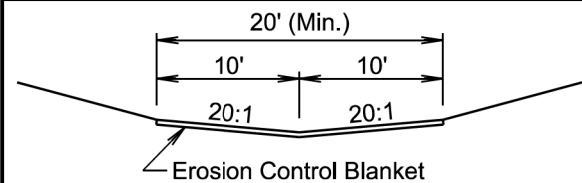
Reinforcement Fabric (MSE)

SECTION B-B

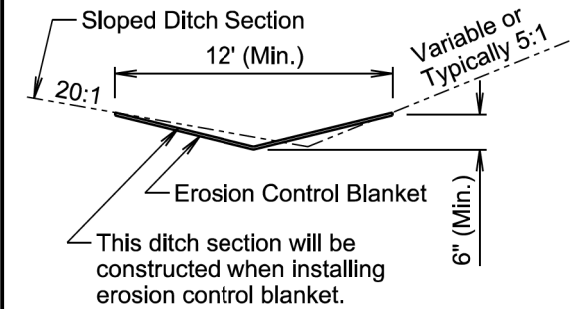
PARALLEL TO ROADWAY

STATE OF SOUTH DAKOTA	PROJECT	SHEET	TOTAL SHEETS
	P-CR 0046(73)366 P-CR 0011(152)34		

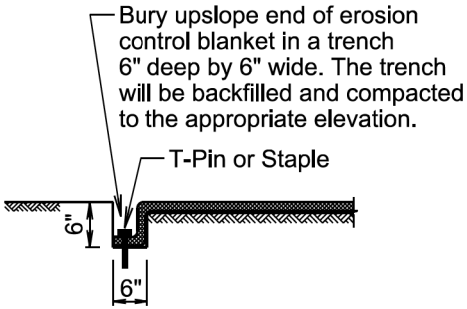
Plotting Date: 01/21/2025



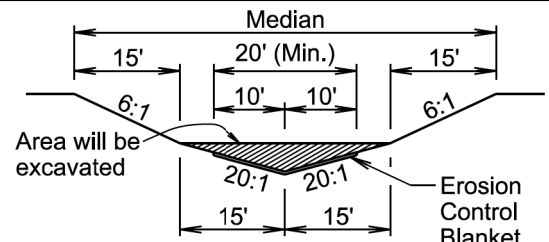
STANDARD DITCH SECTION



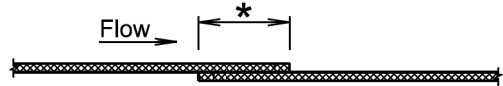
SLOPED DITCH SECTION



TRENCH DETAIL

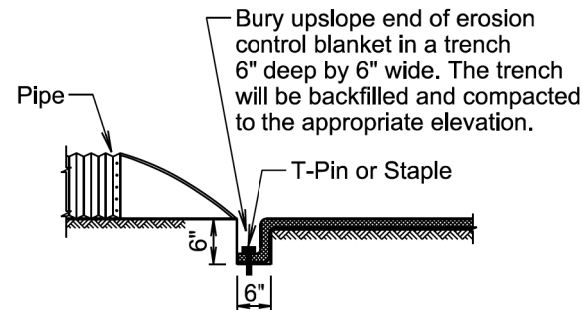


MEDIAN SECTION



- * Use a 4" (Min.) overlap wherever two widths of erosion control blanket are applied side by side.
- * Use a 6" (Min.) overlap wherever one roll of erosion control blanket ends and another begins.

OVERLAP DETAIL



PIPE END DETAIL

GENERAL NOTES:

Prior to placement of the erosion control blanket, the areas will be properly prepared, shaped, seeded, and fertilized.

Erosion control blanket will be unrolled in the direction of the flow of water when placed in ditches and on slopes. The upslope end of the erosion control blanket will be buried in a trench 6" wide by 6" deep. There will be at least a 6" overlap wherever one roll of erosion control blanket ends and another begins, with the upslope erosion control blanket placed on top of the downslope erosion control blanket.

The erosion control blanket will be pinned to the ground according to the manufacturer's installation recommendations.

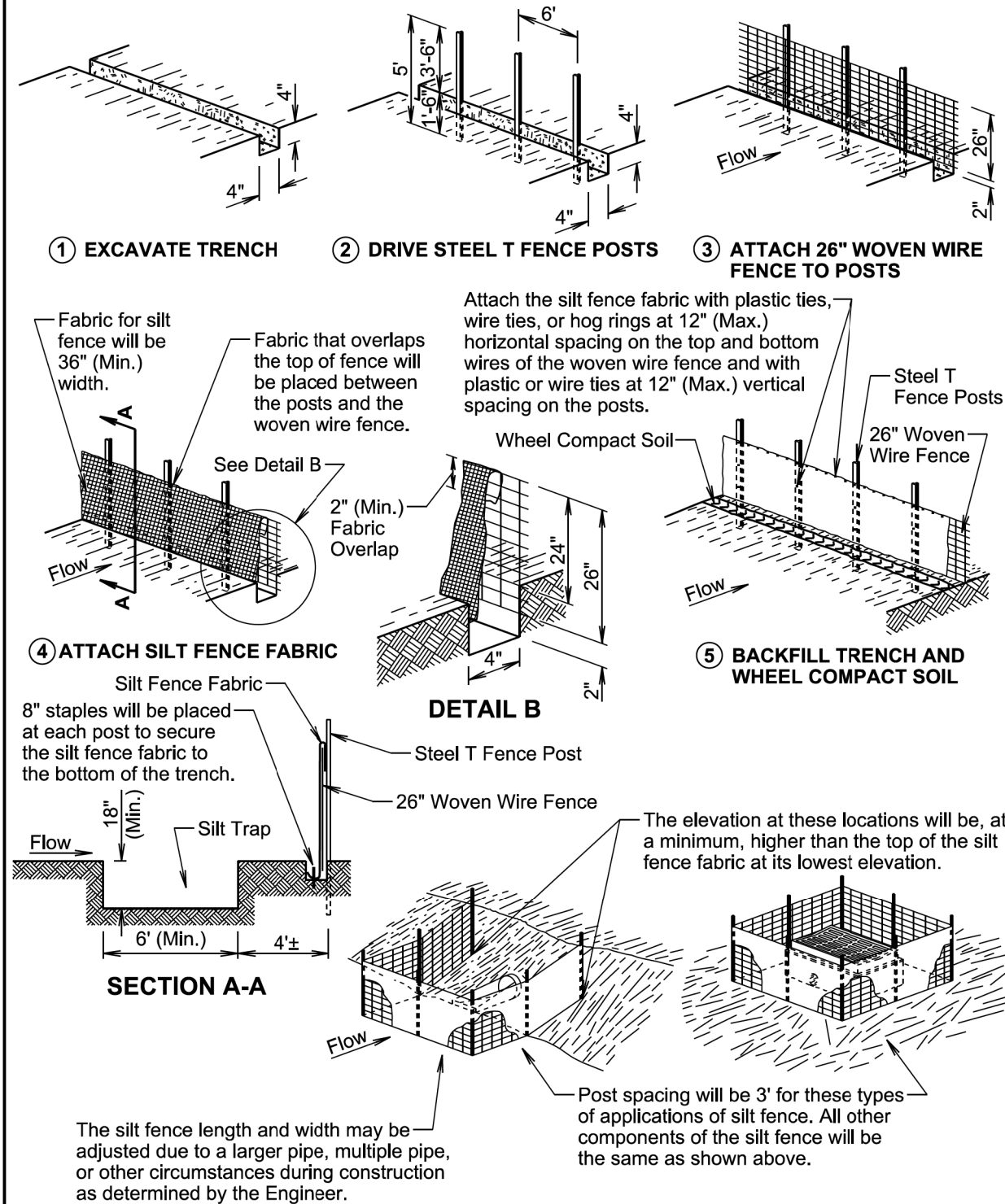
After the placement of the erosion control blanket, the Contractor will fine grade along all edges of the blanket to maintain a uniform slope adjacent to the blanket and level any low spots which might prevent uniform and unrestricted flow of side drainage directly onto the erosion control blanket.

All ditch sections will be shaped when installing the erosion control blanket. All costs for shaping the ditches will be incidental to the contract unit price per foot for "Shaping for Erosion Control Blanket".

February 14, 2020

Published Date: 2025	S D D O T	EROSION CONTROL BLANKET	PLATE NUMBER 734.01
			Sheet 1 of 1

MANUAL LOW FLOW SILT FENCE INSTALLATION



February 14, 2020

Published Date: 2025

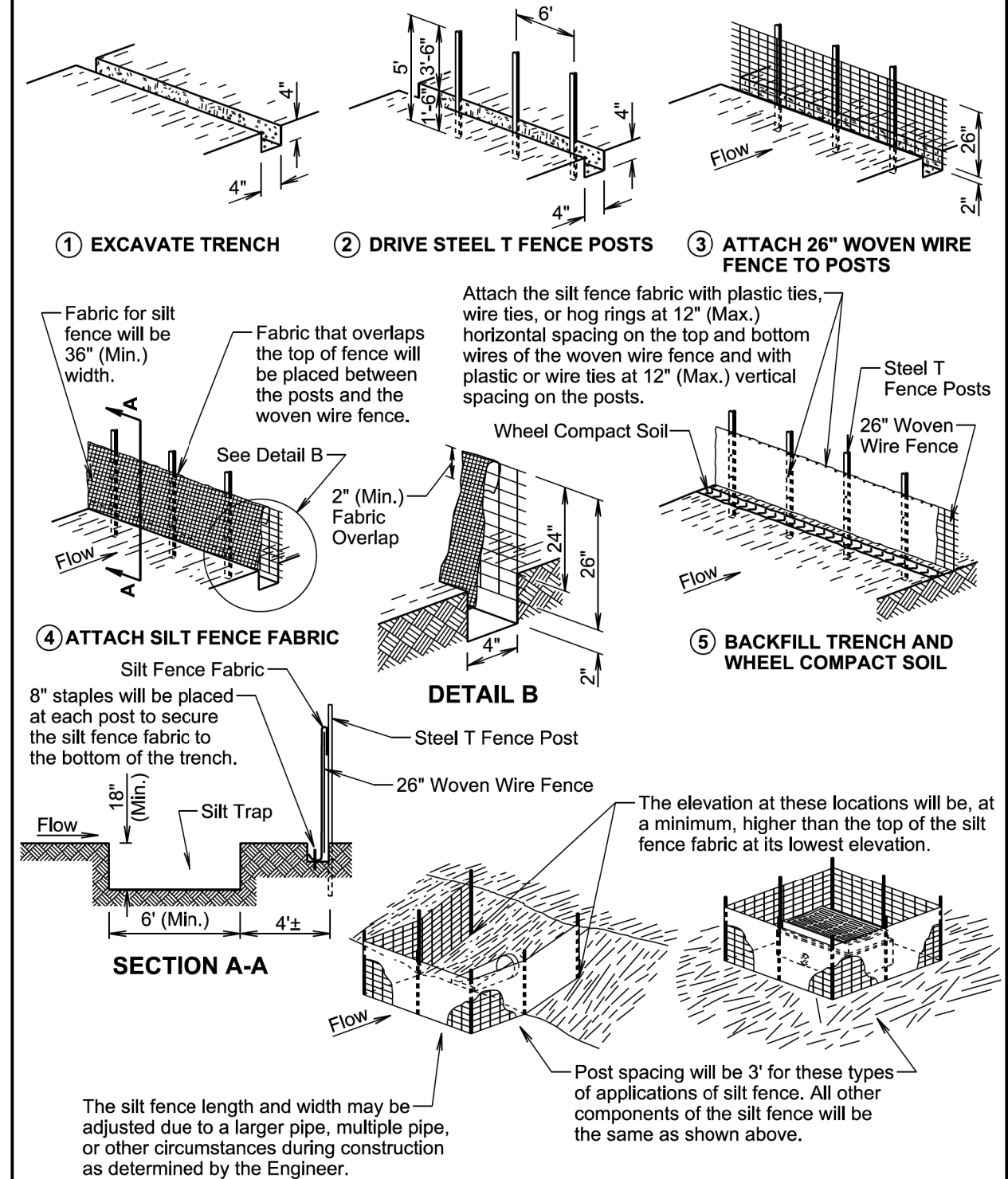
S
D
D
O
T

LOW FLOW SILT FENCE
AND SILT TRAP

PLATE NUMBER
734.04

Sheet 1 of 2

MANUAL LOW FLOW SILT FENCE INSTALLATION



February 14, 2020

Published Date: 2025

S
D
D
O
T

LOW FLOW SILT FENCE
AND SILT TRAP

PLATE NUMBER
734.04

Sheet 1 of 2

STATE OF SOUTH DAKOTA	PROJECT	SHEET	TOTAL SHEETS
	P-CR 0046(73)366 P-CR 0011(152)34		

Plotting Date: 01/21/2025

