


# SECTION C: TRAFFIC CONTROL PLANS

FOR BIDDING PURPOSES ONLY

 STATE OF SOUTH DAKOTA	PROJECT	SHEET	TOTAL SHEETS
	NH 0012(230)171...+	C1	C16

Plotting Date: 6/21/2024

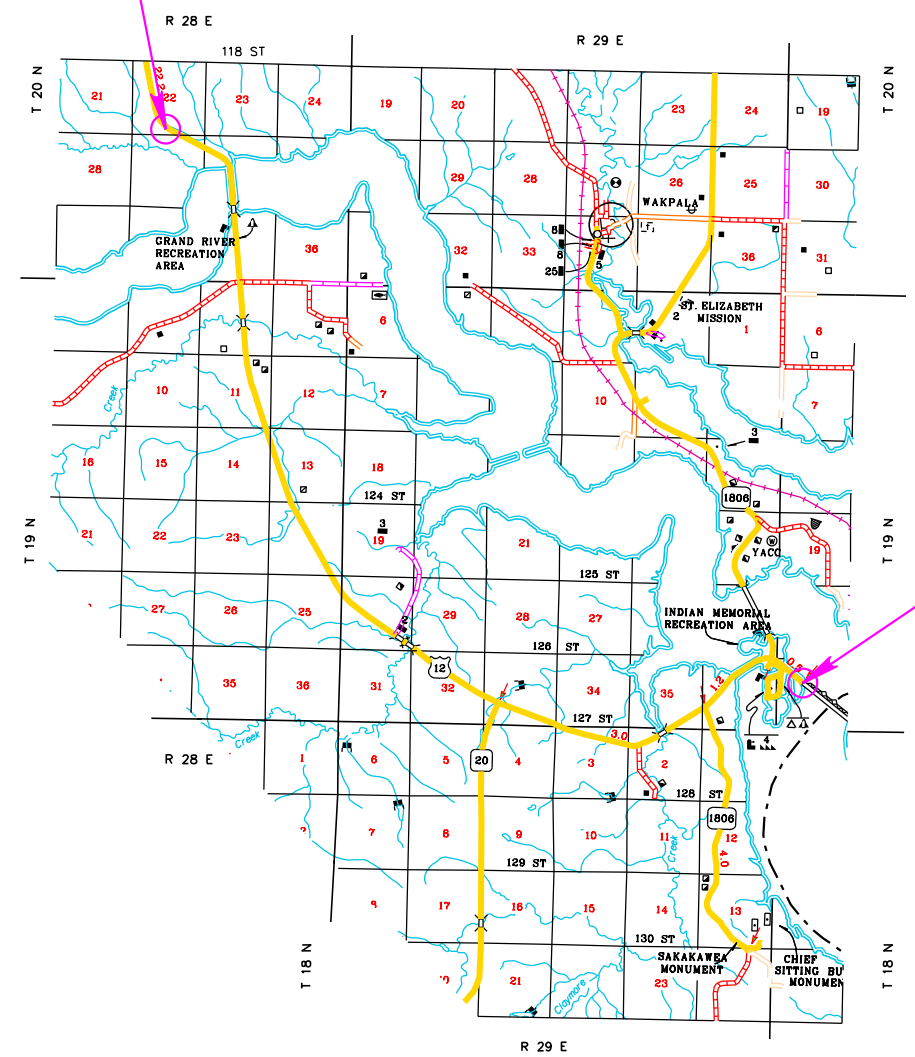


## INDEX OF SHEETS

- C1-C3 General Layout with Index
- C4-C8 Estimate with General Notes & Tables
- C9 Fixed Location Signing
- C10 Overwidth Signing Layout
- C11 Overwidth Sign Details
- C12-C16 Standard Plates

BEGIN NH 0012(230)171  
US 12 - 05TY  
STATION 176+72.2

END NH 0012(230)171  
US 12 - 05TY  
STATION c 268+01.75



Plot Scale - 1:200

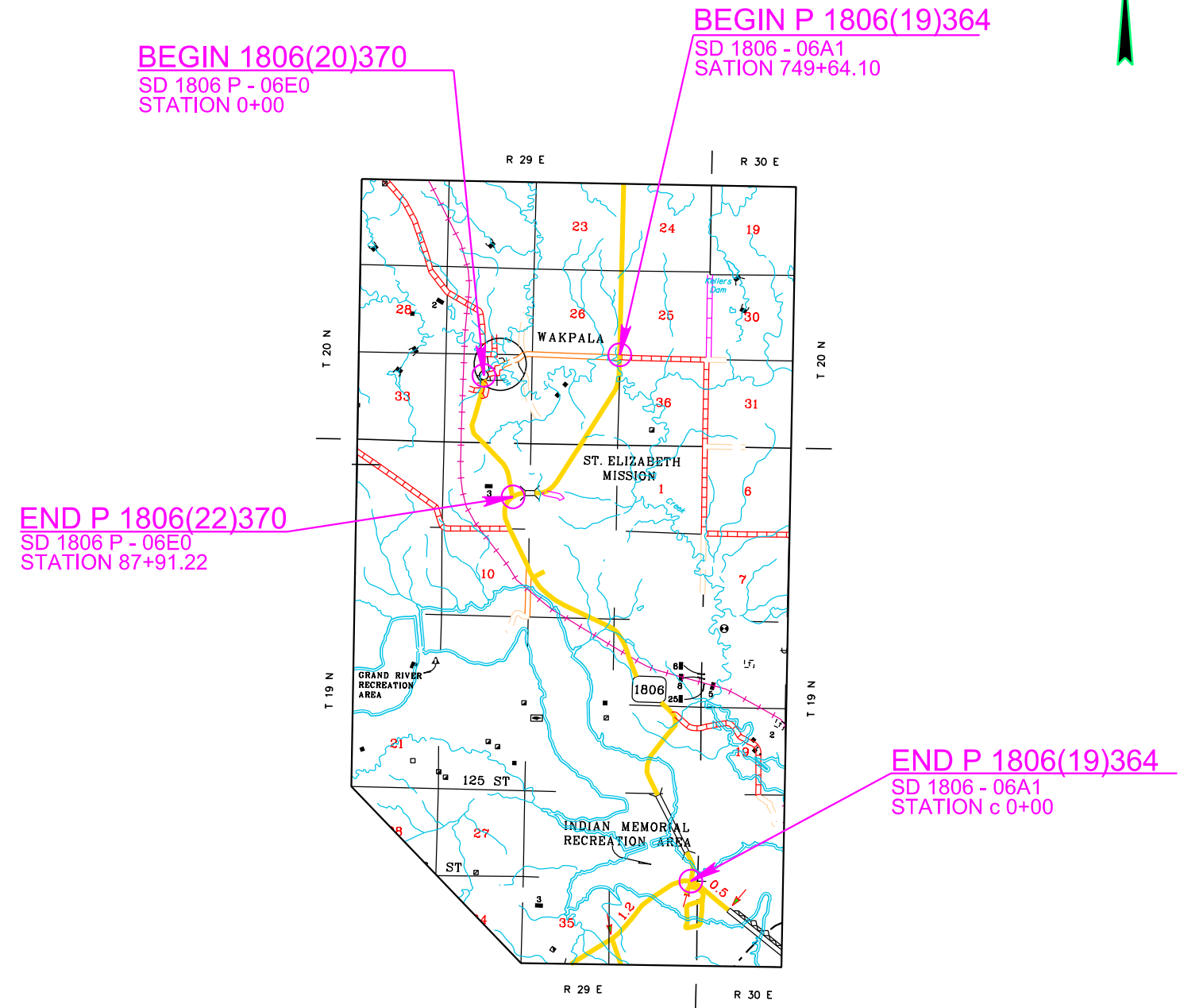
Plotted From - evanwolf

File - ...Section C\SiteC\_05TY.dgn

# SECTION C: TRAFFIC CONTROL PLANS

FOR BIDDING PURPOSES ONLY

KLJ STATE OF SOUTH DAKOTA	PROJECT	SHEET	TOTAL SHEETS
	NH 0012(230)171...+	C2	C16
Plotting Date: 6/21/2024			



Plot Scale - 1:200  
Plotted From - evanwolf

File - ...Section C\SiteC\_06EO\_06A1.dgn

# SECTION C: TRAFFIC CONTROL PLANS

FOR BIDDING PURPOSES ONLY

 STATE OF SOUTH DAKOTA	PROJECT	SHEET	TOTAL SHEETS
	NH 0012(230)171...+	C3	C16

Plotting Date: 6/21/2024

Plot Scale - 1:200

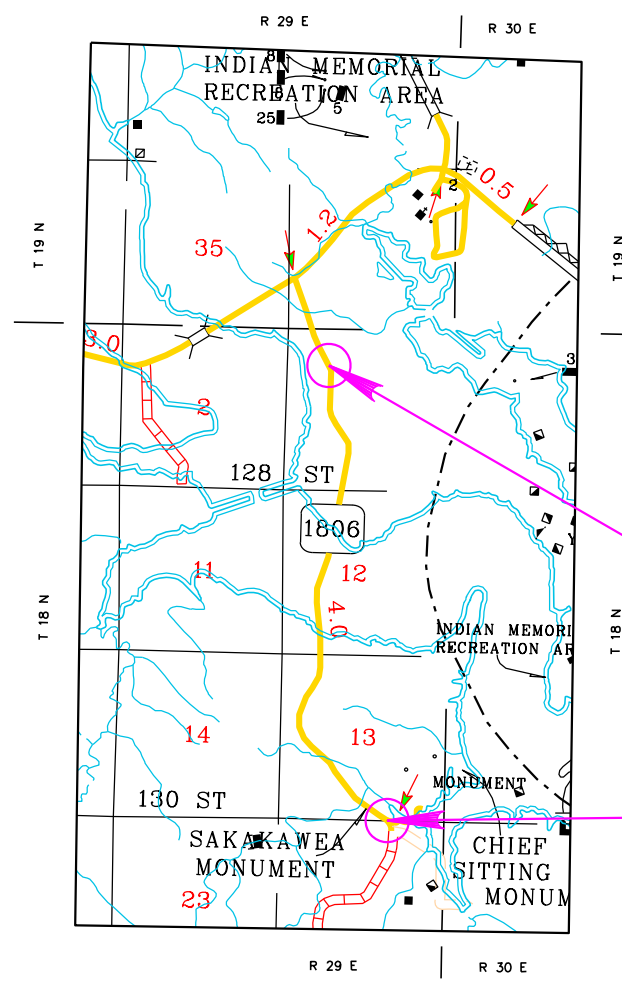
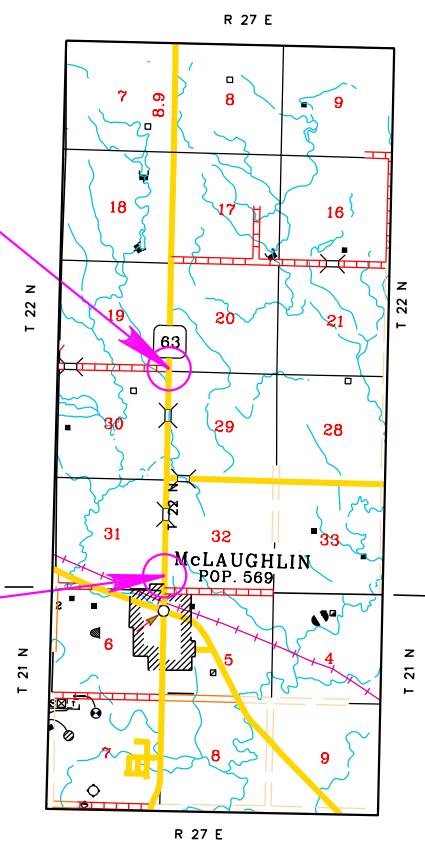
Plotted From - evanwolf

File - ...Section C\SiteC\_07CD\_06RC.dgn



**END P 0063(59)252**  
SD 63 - 07CD  
STATION 390+50.00

**BEGIN P 0063(59)252**  
SD 63 - 07CD  
STATION 288+47.00



**BEGIN 1806(22)359**  
SD 1806 - 06RC  
STATION 69+11.74

**END P 1806(22)359**  
SD 1806 - 06RC  
STATION b 229+74.50



**SECTION C ESTIMATE OF QUANTITIES**

**FOR BIDDING PURPOSES ONLY**

STATE OF SOUTH DAKOTA	PROJECT	SHEET	TOTAL SHEETS
	NH 0012(230)171...+	C4	C16

Revised: 7/23/24 - EJW

**05TY-Section C**

BID ITEM NUMBER	ITEM	QUANTITY	UNIT
634E0010	Flagging	3,600.0	Hour
634E0020	Pilot Car	1,550.0	Hour
634E0110	Traffic Control Signs	761.9	SqFt
634E0120	Traffic Control, Miscellaneous	Lump Sum	LS
634E0275	Type 3 Barricade	1	Each
634E0630	Temporary Pavement Marking	73.1	Mile

**06A1-Section C**

BID ITEM NUMBER	ITEM	QUANTITY	UNIT
260E1030	Base Course, Salvaged	200.0	Ton
634E0010	Flagging	225.0	Hour
634E0020	Pilot Car	100.0	Hour
634E0110	Traffic Control Signs	567.7	SqFt
634E0120	Traffic Control, Miscellaneous	Lump Sum	LS
634E0275	Type 3 Barricade	1	Each
634E0380	Tubular Marker	12	Each
634E0630	Temporary Pavement Marking	27.4	Mile
634E1002	Detour and Restriction Signing	300.0	SqFt
634E1215	Contractor Furnished Portable Changeable Message Sign	2	Each

**06RC-Section C**

BID ITEM NUMBER	ITEM	QUANTITY	UNIT
634E0010	Flagging	120.0	Hour
634E0020	Pilot Car	55.0	Hour
634E0110	Traffic Control Signs	434.1	SqFt
634E0120	Traffic Control, Miscellaneous	Lump Sum	LS
634E0275	Type 3 Barricade	1	Each
634E0630	Temporary Pavement Marking	14.7	Mile

**06E0- Section C**

BID ITEM NUMBER	ITEM	QUANTITY	UNIT
634E0010	Flagging	70.0	Hour
634E0020	Pilot Car	30.0	Hour
634E0110	Traffic Control Signs	418.1	SqFt
634E0120	Traffic Control, Miscellaneous	Lump Sum	LS
634E0630	Temporary Pavement Marking	6.6	Mile

**07CD-Section C**

BID ITEM NUMBER	ITEM	QUANTITY	UNIT
634E0010	Flagging	160.0	Hour
634E0020	Pilot Car	70.0	Hour
634E0110	Traffic Control Signs	518.6	SqFt
634E0120	Traffic Control, Miscellaneous	Lump Sum	LS
634E0630	Temporary Pavement Marking	3.0	Mile

**SEQUENCE OF OPERATIONS**

The Contractor will submit a sequence of operations for approval two weeks prior to the preconstruction meeting. If changes to the sequence of operations are proposed during the project, these must be submitted for review a minimum of one week prior to potential implementation. Approval for changes to the sequence of operations will only be allowed when the proposed changes meet with the Department's intent for traffic control and sequencing of the work.

**GENERAL TRAFFIC CONTROL**

Existing guide, route, informational logo, regulatory, and warning signs will be temporarily reset and maintained during construction. Removing, relocating, covering, salvaging, and resetting of existing traffic control devices, including delineation, will be the responsibility of the Contractor. Cost for this work will be incidental to the contract unit prices for the various items unless otherwise specified in the plans. Any delineators and signs damaged or lost will be replaced by the Contractor at no cost to the State.

All temporary traffic control sign locations will be set in the field by the Contractor and verified by the Engineer prior to installation.

All temporary speed limit signs will have a minimum mounting height of 5 feet in rural locations, even when mounted on portable supports.

Portable sign supports will not be located on sidewalks, bicycle facilities, or other areas designated for pedestrian or bicycle traffic.

All construction operations will be conducted in the general direction of traffic movement.

If there is a discrepancy between the traffic control plans, standard plates, and the MUTCD, whichever is more stringent will be used, as determined by the Engineer.

Unless otherwise stated in these plans, work will not be allowed during hours of darkness.

Fixed location signing placed more than 4 calendar days prior to the start of construction will be covered or laid down until the time of construction. The covers must be approved by the Engineer prior to installation. The cost of materials, labor, and equipment necessary to complete this work will be incidental to other contract items. No separate payment will be made.

All fixed location signs, sign posts, and breakaway bases will be removed within 7 calendar days following pavement marking.

All haul trucks will be equipped with an additional flashing amber light that is visible from the backside of the haul truck. The costs for the flashing amber lights will be incidental to the various related contract items.

At no time will a vertical drop-off of greater than 3 inches be left overnight adjacent to the traveled way. The Contractor will utilize embankment material to ensure a 3-inch vertical drop-off is not exceeded. The slope of the embankment material will not be steeper than a 4:1 within 30 feet of the traveled way.

Traffic will be maintained on the driving lanes. Use of the shoulder as a driving lane will not be permitted. Any damage to the shoulder due to rerouted traffic or Contractor's equipment will be repaired at no expense to the Department.

The Contractor will furnish, install, maintain, and remove TRUCK CROSSING (W8-6) signs daily. The TRUCK CROSSING signs will be displayed always when haul vehicles are hauling material. When hauling conditions no longer exist, the signs will be covered or removed from view. The exact number and location will be determined during construction. Payment for additional signs will be based on the contract unit price per square foot for "Traffic Control Signs".

GROOVED PAVEMENT (W8-15) signs with MOTORCYCLE (W8-15P) plaques are required in advance of areas that have been cold milled and are not resurfaced the same day. The GROOVED PAVEMENT sign assemblies will be installed a minimum of 1000 feet in advance of cold milled sections and remain in place until the sections have been resurfaced.

The Contractor will notify businesses/homeowners a minimum of two weeks prior to construction to inform them of upcoming construction and again a minimum of 48 hours prior to any blocked access to make appropriate arrangements.

A mobile work operation will be allowed provided the rumble strip or rumble stripe grooving, flush sealing, and pavement marking can be completed satisfactorily by a continuously moving work operation. A mobile work operation will require approval by the Engineer.



**FOR BIDDING PURPOSES ONLY**

**FLAGGING**

Operations will be conducted so that the traveling public will not have to wait longer than 15 minutes at the flagger station.

Additional flagger warning signs and flagger hours have been included in the Estimate of Quantities for use on intersecting roads. These flaggers will be used as directed by the Engineer and will be used primarily during daytime hours. Also included in the Estimate of Quantities are WAIT FOLLOW PILOT CAR signs for use on low volume intersecting roads as determined by the Engineer. WAIT FOLLOW PILOT CAR signs will not block the view of the stop sign.



It is required that the flaggers and pilot car operators be able to communicate with one another. If an emergency vehicle needs to pass through the project, the Contractor will be required to expedite traffic movement. All costs associated with this will be incidental to the contract unit price per hour for "Flagging".

**TEMPORARY PAVEMENT MARKING**

The total length of no passing zone on this project is estimated to be 11.2 miles on 05TY, 4.5 miles on 06A1, 3.8 on 06RC, 1.6 miles on 06E0, 1.4 miles on 07CD.

It is estimated that 26 DO NOT PASS (R4-1) and 26 PASS WITH CARE (R4-2) on 05TY, 16 DO NOT PASS and 16 PASS WITH CARE on 06A1, 16 DO NOT PASS and 16 PASS WITH CARE on 06RC, 6 DO NOT PASS and 6 PASS WITH CARE on 06E0, and 8 DO NOT PASS and 8 PASS WITH CARE on 07CD signs will be required to mark the no passing zones, should the Contractor elect to use these signs.

Temporary flexible vertical markers (tabs) will be used to mark dashed centerline, No Passing Zones, and applicable lane lines. Paint will not be allowed for temporary pavement marking on the asphalt concrete wear course or after application of the flush seal.

Temporary pavement marking paint will not be allowed on the final lift of asphalt surfacing. Temporary pavement marking paint will not be allowed on the chip seal, fog seal, or flush seal. Temporary flexible vertical markers (tabs) must be used on the final lift of asphalt surfacing. The Contractor may use tabs with covers, uncovering them for the chip seal, fog seal, or flush seal. As an alternative, the Contractor may install new tabs for the fog seal or flush seal.

Covers on the tabs will be sufficiently secured to prevent traffic from dislodging the cover and when removed, the covers will be properly disposed of. The Contractor will remove and properly dispose of the tabs after permanent pavement marking is applied. Method of removal will be nondestructive to the road surface and will be accomplished within one week of completion of the permanent pavement marking.

Full reflectivity of all temporary flexible vertical markers (tabs) is required at all times. The Contractor will be required to replace any missing or non-reflective tabs after each installation as detailed below at no additional cost to the State.

Quantities of Temporary Pavement Markings consist of:

- One pass on top of the Cold Milled Asphalt Concrete (Sections 9-14).
- One pass on top of the Blade Laid Asphalt Concrete (Sections 9-14).
- One pass on top of the MC-70 Asphalt for Prime (Sections 1-8).
- One pass on top of the first lift of Class Q3R Asphalt Concrete (Sections 1-8).
- One pass on top of the second lift of Class Q3R Asphalt Concrete (Sections 3 & 8).
- One pass on top of the final lift of Class Q3R Asphalt Concrete (All Sections).
- One pass after the flush seal (All Sections).

If the Engineer determines that an additional pass prior to the flush seal is not required, this application of the temporary pavement marking will be eliminated. If the flush seal is eliminated for the project, the application of the temporary pavement marking on top of the flush seal as well as the additional pass prior to the flush seal will be eliminated.

No adjustment in the contract unit price for "Temporary Pavement Marking" will be made because of a variation in quantities.

In the absence of a signed lane closure or pilot car operation, FLAGGER (W20-7) symbol signs and flaggers, or a shadow vehicle with rotating yellow lights or strobe lights will be positioned on the shoulder in advance of workers for both directions of traffic during the installation and removal of the temporary flexible vertical markers (tabs). The traffic control device used will be moved intermittently to provide proper warning of the work operation. A ROAD WORK AHEAD (W20-1) sign, a WORKER (W21-1) symbol sign or a BE PREPARED TO STOP (W3-4) sign will be mounted on the rear of the shadow vehicle. The method of traffic control used by the Contractor for this work must be approved by the Engineer.

Prior to nightfall, tabs will be required to mark centerline on segments of roadway where existing centerline markings have been removed and new markings have not been installed.

**TRAFFIC CONTROL AT HEAVE REPAIR AND BASE COURSE REINFORCEMENT LOCATIONS**

The Contractor will be required to maintain traffic through the heave repair/undercut areas on SD1806 in accordance with Standard Plate 634.31.

During this time, the site will require Bump signs with Reduced Speed Plaques. The speed on the plaque will be determined by the Contractor. Tubular markers are incidental to the contract lump sum price for Traffic Control, Miscellaneous.

Base Course, Salvaged will be utilized in the heave repair and base course reinforcement areas, as a surfacing transition between the existing surface and the new base course surfacing. Traffic will be maintained through these areas on the new base course. Cost to place, remove, or relocate these transitions are incidental to the contract unit price per ton for Base Course, Salvaged. Maintenance of the surface is the responsibility of the Contractor. Temporary surfacing will be required during times of inclement weather. Base Course or Base Course, Salvaged will be utilized to provide a solid surface, as approved by the Engineer, to ensure that these areas can be navigated during those times.

**TRAFFIC CONTROL FOR ASPHALT CONCRETE RESURFACING**

The Contractor will need to install LOOSE GRAVEL (W8-7) signs with advisory speed plaques (W13-1P) in areas where loose sand is present during the flush seal operation. LOOSE GRAVEL signs have been included in these plans for this.

**CONTRACTOR-FURNISHED PORTABLE CHANGEABLE MESSAGE SIGN**

The Portable Changeable Message Signs will be used as directed by the Engineer. The portable message signs will be programmed to use standard abbreviations and wording as described in the MUTCD or as directed by the Engineer. The portable changeable message signs will be paid for at the contract unit price per each for "Contractor Furnished Portable Changeable Message Sign".

A Contractor-Furnished Portable Changeable Message Sign will be used to alert traffic of approaching road conditions during construction. When determined by the Engineer, the Contractor may need to relocate the Contractor-Furnished Portable Changeable Message Signs multiple times along with changing the message readout display at any time throughout the duration of the project. All costs associated with relocation and message changing will be incidental to the contract unit price per each for "Contractor-Furnished Portable Changeable Message Sign".

**BASE COURSE, SALVAGED**

Base Course, Salvaged will be obtained from the granular material salvaged from the heave repair areas and may be used without further gradation testing.

Base Course, Salvaged will be removed prior to asphalt surfacing. Placing and removing the Base Course, Salvaged, for the temporary surfacing in the heave repair areas will be incidental to the contract unit price per ton for "Base Course, Salvaged".

The removed material will become the property of the Contractor for disposal.



FOR BIDDING PURPOSES ONLY

STATE OF SOUTH DAKOTA	PROJECT	SHEET	TOTAL SHEETS
	NH 0012(230)171...+	C6	C16

**OVERWIDTH RESTRICTION AND DETOUR SIGNING**

The Contractor will furnish and install the overwidth restriction and detour signs as shown in these plans. Prior to installing the signs, the Contractor will mark the sign locations and review them with the Engineer. Overwidth restriction signs will be installed on fixed location, ground mounted, breakaway supports. It will be the responsibility of the Contractor to maintain and reinstall these signs during the project as required by the construction progress. Upon completion of the project, the Contractor will remove the overwidth restriction signs.

All costs for furnishing the signs, posts, and mounting hardware, and for installing, maintaining, covering, and removing the overwidth restriction and detour signs will be incidental to the contract unit price per square foot for "Detour and Restriction Signing".



# SIGN TABUATION

FOR BIDDING PURPOSES ONLY

STATE OF SOUTH DAKOTA	PROJECT NH 0012(230)171...+	SHEET C7	TOTAL SHEETS C16
-----------------------	--------------------------------	-------------	---------------------

## ITEMIZED LIST FOR TRAFFIC CONTROL SIGNS (05TY)

SIGN CODE	SIGN DESCRIPTION	NUMBER	SIGN SIZE	SQFT PER SIGN	SQFT
R1-1	STOP	2	30"	5.2	10.4
W1-4	REVERSE CURVE (L or R)	2	48" x 48"	16.0	32.0
W3-4	BE PREPARED TO STOP	3	48" x 48"	16.0	48.0
W7-3aP	NEXT __ MILES (plaque)	6	36" x 30"	7.5	45.0
W8-1	BUMP	3	48" x 48"	16.0	48.0
W8-6	TRUCK CROSSING	2	48" x 48"	16.0	32.0
W8-7	LOOSE GRAVEL	2	48" x 48"	16.0	32.0
W8-11	UNEVEN LANES	3	48" x 48"	16.0	48.0
W8-15	GROOVED PAVEMENT	3	48" x 48"	16.0	48.0
W8-15P	MOTORCYCLE (plaque)	3	24" x 18"	3.0	9.0
W13-1P	ADVISORY SPEED (plaque)	2	30" x 30"	6.3	12.6
W20-1	ROAD WORK AHEAD	3	48" x 48"	16.0	48.0
W20-4	ONE LANE ROAD AHEAD	3	48" x 48"	16.0	48.0
W20-7	FLAGGER (symbol)	5	48" x 48"	16.0	80.0
W21-2	FRESH OIL	2	48" x 48"	16.0	32.0
W21-5	SHOULDER WORK	2	48" x 48"	16.0	32.0
SPECIAL	WAIT FOLLOW PILOT CAR	3	30" x 18"	3.8	11.4
G20-1	ROAD WORK NEXT __ MILES	8	36" x 18"	4.5	36.0
G20-2	END ROAD WORK	3	36" x 18"	4.5	13.5
W21-16	NO PAVEMENT MARKINGS	6	48" x 48"	16.0	96.0
<b>CONVENTIONAL ROAD TRAFFIC CONTROL SIGNS SQFT</b>					<b>761.9</b>

## ITEMIZED LIST FOR TRAFFIC CONTROL SIGNS (06RC)

SIGN CODE	SIGN DESCRIPTION	NUMBER	SIGN SIZE	SQFT PER SIGN	SQFT
R1-1	STOP	2	30"	5.2	10.4
W1-4	REVERSE CURVE (L or R)	2	48" x 48"	16.0	32.0
W3-4	BE PREPARED TO STOP	2	48" x 48"	16.0	32.0
W8-1	BUMP	2	48" x 48"	16.0	32.0
W8-6	TRUCK CROSSING	2	48" x 48"	16.0	32.0
W8-7	LOOSE GRAVEL	2	48" x 48"	16.0	32.0
W8-11	UNEVEN LANES	2	48" x 48"	16.0	32.0
W8-15	GROOVED PAVEMENT	2	48" x 48"	16.0	32.0
W8-15P	MOTORCYCLE (plaque)	2	24" x 18"	3.0	6.0
W13-1P	ADVISORY SPEED (plaque)	2	30" x 30"	6.3	12.6
W20-1	ROAD WORK AHEAD	1	48" x 48"	16.0	16.0
W20-4	ONE LANE ROAD AHEAD	2	48" x 48"	16.0	32.0
W20-7	FLAGGER (symbol)	3	48" x 48"	16.0	48.0
W21-2	FRESH OIL	2	48" x 48"	16.0	32.0
W21-5	SHOULDER WORK	2	48" x 48"	16.0	32.0
SPECIAL	WAIT FOLLOW PILOT CAR	2	30" x 18"	3.8	7.6
G20-1	ROAD WORK NEXT __ MILES	2	36" x 18"	4.5	9.0
G20-2	END ROAD WORK	1	36" x 18"	4.5	4.5
<b>CONVENTIONAL ROAD TRAFFIC CONTROL SIGNS SQFT</b>					<b>434.1</b>

## ITEMIZED LIST FOR TRAFFIC CONTROL SIGNS (06A1)

SIGN CODE	SIGN DESCRIPTION	NUMBER	SIGN SIZE	SQFT PER SIGN	SQFT
R1-1	STOP	2	30"	5.2	10.4
W1-4	REVERSE CURVE (L or R)	2	48" x 48"	16.0	32.0
W3-4	BE PREPARED TO STOP	2	48" x 48"	16.0	32.0
W8-1	BUMP	3	48" x 48"	16.0	48.0
W8-6	TRUCK CROSSING	2	48" x 48"	16.0	32.0
W8-7	LOOSE GRAVEL	2	48" x 48"	16.0	32.0
W8-11	UNEVEN LANES	2	48" x 48"	16.0	32.0
W8-15	GROOVED PAVEMENT	2	48" x 48"	16.0	32.0
W8-15P	MOTORCYCLE (plaque)	2	24" x 18"	3.0	6.0
W13-1P	ADVISORY SPEED (plaque)	4	30" x 30"	6.3	25.2
W20-1	ROAD WORK AHEAD	5	48" x 48"	16.0	80.0
W20-4	ONE LANE ROAD AHEAD	4	48" x 48"	16.0	64.0
W20-7	FLAGGER (symbol)	3	48" x 48"	16.0	48.0
W21-2	FRESH OIL	2	48" x 48"	16.0	32.0
W21-5	SHOULDER WORK	2	48" x 48"	16.0	32.0
SPECIAL	WAIT FOLLOW PILOT CAR	2	30" x 18"	3.8	7.6
G20-1	ROAD WORK NEXT __ MILES	4	36" x 18"	4.5	18.0
G20-2	END ROAD WORK	1	36" x 18"	4.5	4.5
<b>CONVENTIONAL ROAD TRAFFIC CONTROL SIGNS SQFT</b>					<b>567.7</b>

## ITEMIZED LIST FOR TRAFFIC CONTROL SIGNS (06E0)

SIGN CODE	SIGN DESCRIPTION	NUMBER	SIGN SIZE	SQFT PER SIGN	SQFT
R1-1	STOP	2	30"	5.2	10.4
W3-4	BE PREPARED TO STOP	2	48" x 48"	16.0	32.0
W8-1	BUMP	2	48" x 48"	16.0	32.0
W8-6	TRUCK CROSSING	2	48" x 48"	16.0	32.0
W8-7	LOOSE GRAVEL	2	48" x 48"	16.0	32.0
W8-11	UNEVEN LANES	2	48" x 48"	16.0	32.0
W8-15	GROOVED PAVEMENT	2	48" x 48"	16.0	32.0
W8-15P	MOTORCYCLE (plaque)	2	24" x 18"	3.0	6.0
W13-1P	ADVISORY SPEED (plaque)	2	30" x 30"	6.3	12.6
W20-1	ROAD WORK AHEAD	3	48" x 48"	16.0	48.0
W20-4	ONE LANE ROAD AHEAD	2	48" x 48"	16.0	32.0
W20-7	FLAGGER (symbol)	2	48" x 48"	16.0	32.0
W21-2	FRESH OIL	2	48" x 48"	16.0	32.0
W21-5	SHOULDER WORK	2	48" x 48"	16.0	32.0
SPECIAL	WAIT FOLLOW PILOT CAR	2	30" x 18"	3.8	7.6
G20-1	ROAD WORK NEXT __ MILES	2	36" x 18"	4.5	9.0
G20-2	END ROAD WORK	1	36" x 18"	4.5	4.5
<b>CONVENTIONAL ROAD TRAFFIC CONTROL SIGNS SQFT</b>					



FOR BIDDING PURPOSES ONLY

STATE OF SOUTH DAKOTA	PROJECT	SHEET	TOTAL SHEETS
	NH 0012(230)171...+	C8	C16

ITEMIZED LIST FOR TRAFFIC CONTROL SIGNS (07CD)

SIGN CODE	SIGN DESCRIPTION	NUMBER	SIGN SIZE	SQFT PER SIGN	SQFT
R1-1	STOP	2	30"	5.2	10.4
W3-4	BE PREPARED TO STOP	2	48" x 48"	16.0	32.0
W8-1	BUMP	2	48" x 48"	16.0	32.0
W8-6	TRUCK CROSSING	2	48" x 48"	16.0	32.0
W8-7	LOOSE GRAVEL	2	48" x 48"	16.0	32.0
W8-11	UNEVEN LANES	2	48" x 48"	16.0	32.0
W8-15	GROOVED PAVEMENT	2	48" x 48"	16.0	32.0
W8-15P	MOTORCYCLE (plaque)	2	24" x 18"	3.0	6.0
W13-1P	ADVISORY SPEED (plaque)	2	30" x 30"	6.3	12.6
W20-1	ROAD WORK AHEAD	8	48" x 48"	16.0	128.0
W20-4	ONE LANE ROAD AHEAD	2	48" x 48"	16.0	32.0
W20-7	FLAGGER (symbol)	5	48" x 48"	16.0	80.0
W21-2	FRESH OIL	2	48" x 48"	16.0	32.0
SPECIAL	WAIT FOLLOW PILOT CAR	2	30" x 18"	3.8	7.6
G20-1	ROAD WORK NEXT __ MILES	2	36" x 18"	4.5	9.0
G20-2	END ROAD WORK	2	36" x 18"	4.5	9.0
		<b>CONVENTIONAL ROAD TRAFFIC CONTROL SIGNS SQFT</b>			<b>518.6</b>



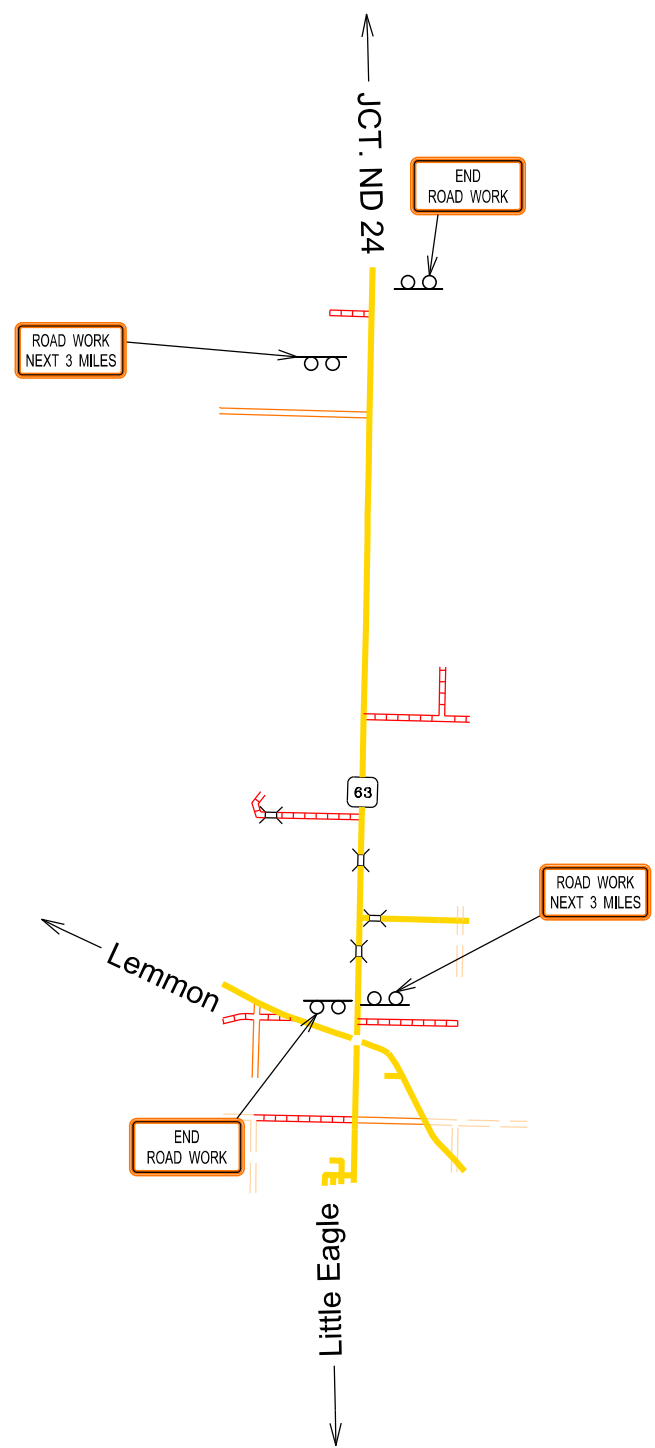


# Fixed Location Signing

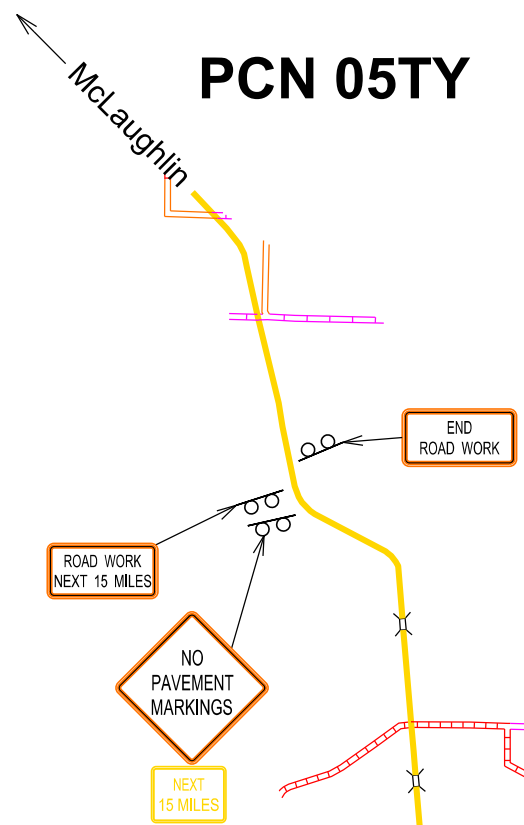
FOR BIDDING PURPOSES ONLY

STATE OF SOUTH DAKOTA	PROJECT NH 0012(230)171...+	SHEET C9	TOTAL SHEETS C16
Plotting Date: 6/19/2024			

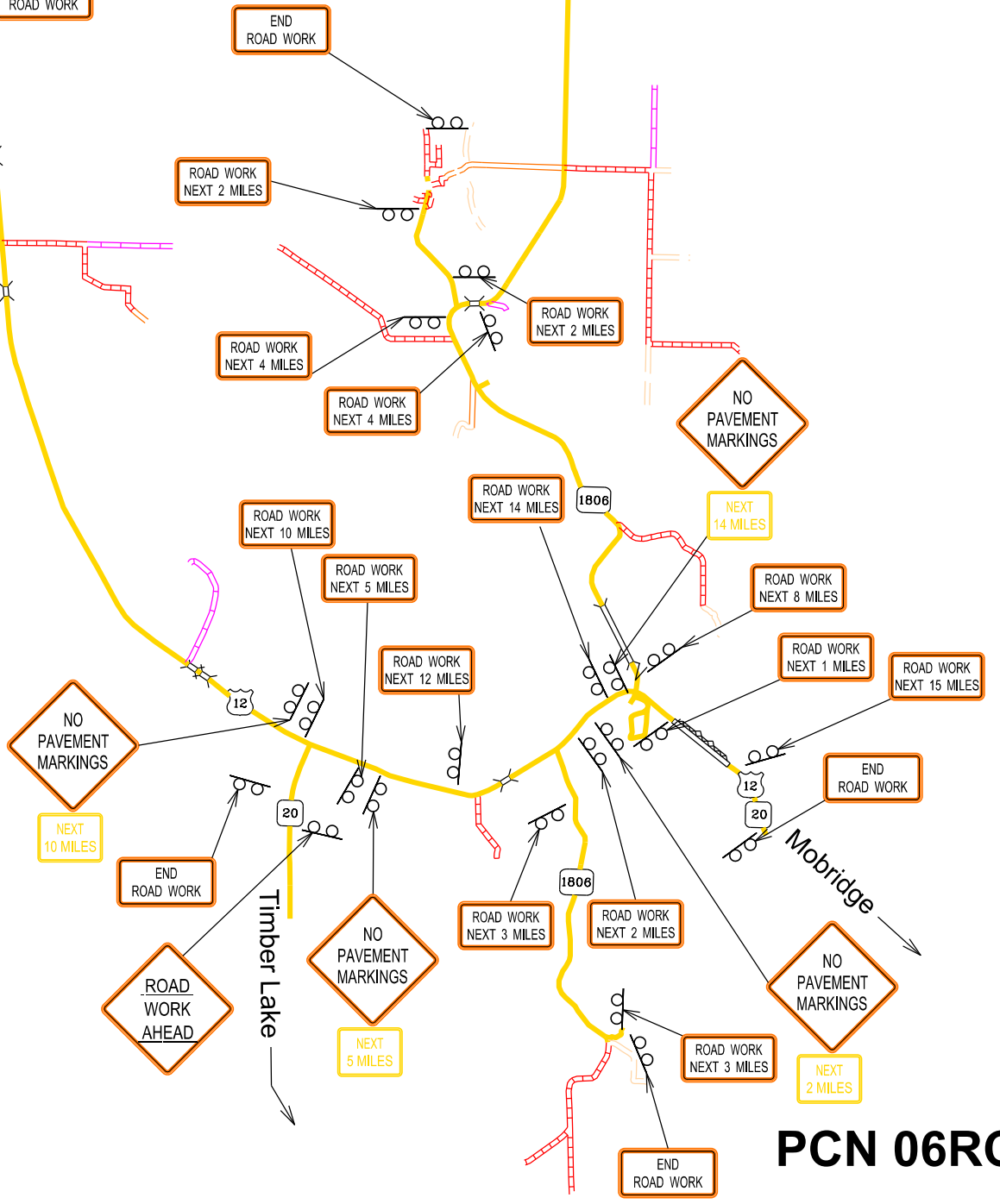
## PCN 07CD



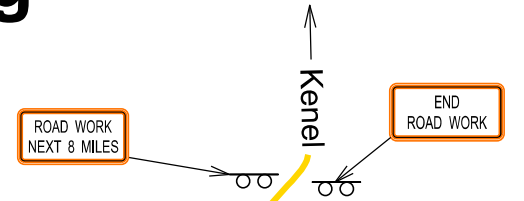
## PCN 05TY



## PCN 06E0



## PCN 06A1



## PCN 06RC



Plot Scale - 1:10051.7


Plotted From - evanwolf



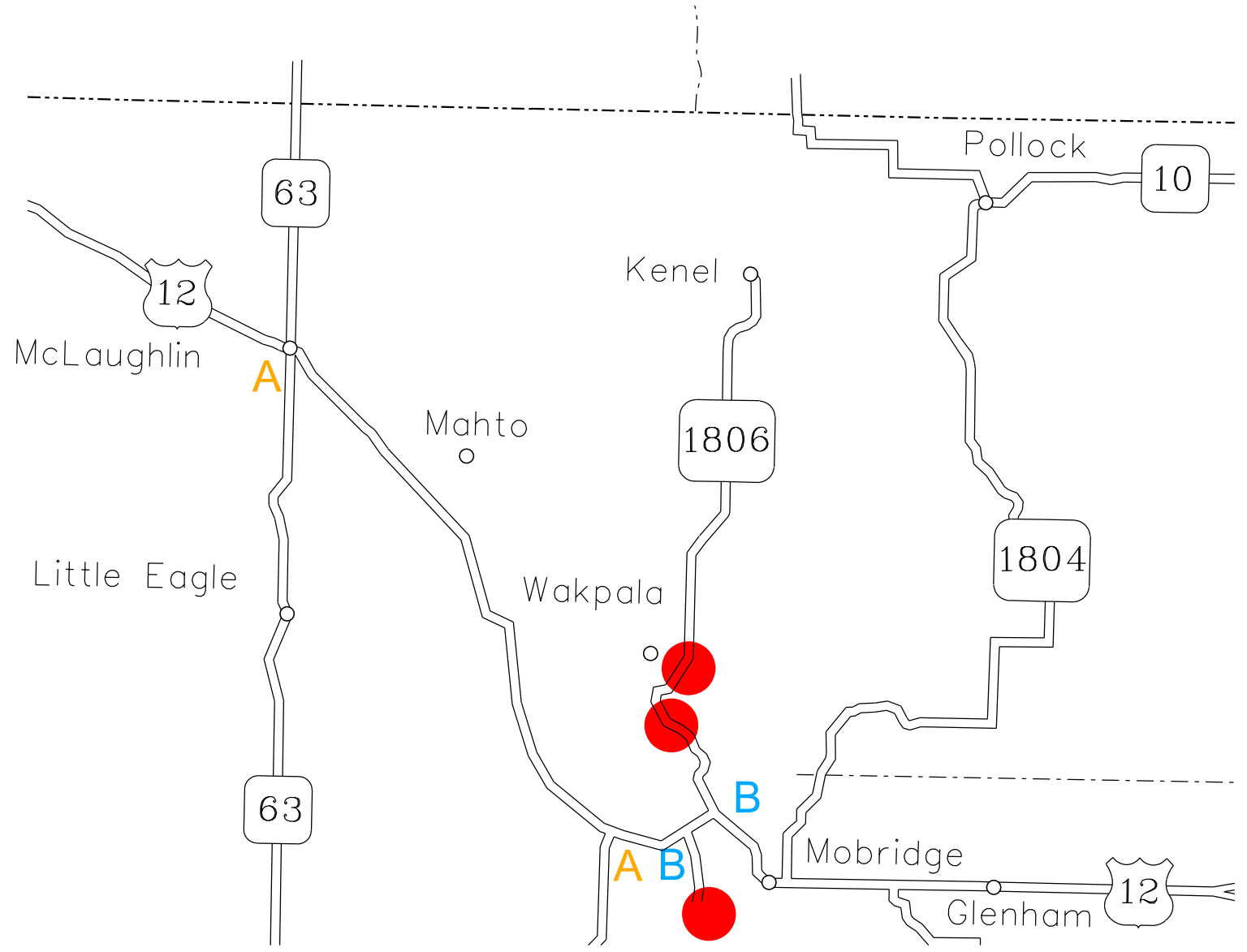
File - ...Fixed Location Signing.dgn

# OVERWIDTH SIGN LAYOUT

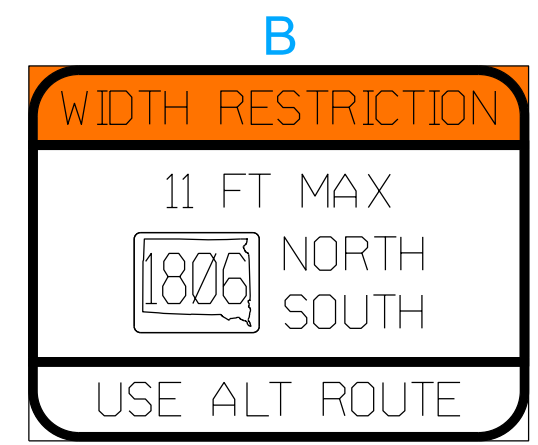
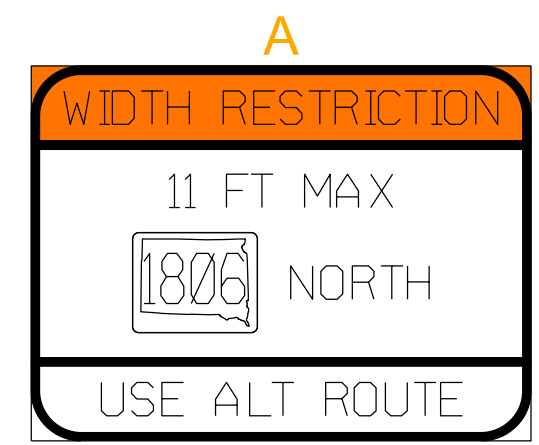
FOR BIDDING PURPOSES ONLY

 STATE OF SOUTH DAKOTA	PROJECT	SHEET	TOTAL SHEETS
	NH 0012(230)171...+	C10	C16
Plotting Date: 6/21/2024			

Plot Scale - 1:30000



 Project Sites




Plotted From - evanwolf

File - ...Overwidth Signing.dgn



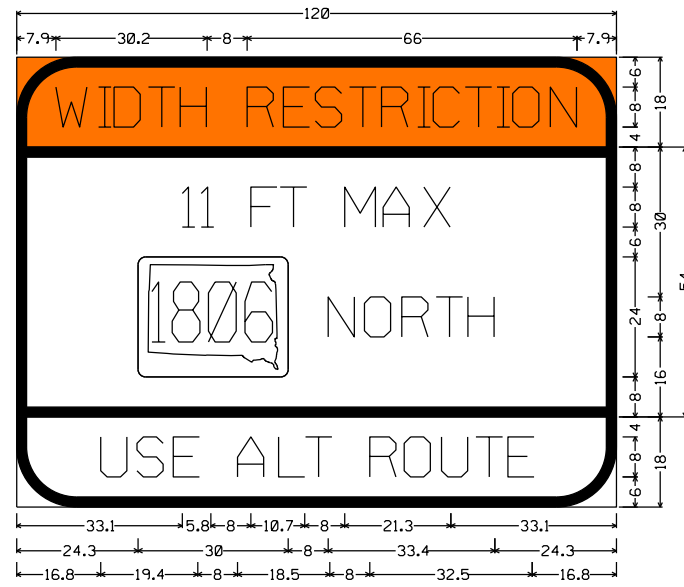
# SIGN DETAILS

FOR BIDDING PURPOSES ONLY

 STATE OF SOUTH DAKOTA	PROJECT	SHEET	TOTAL SHEETS
	NH 0012(230)171...+	C11	C16

Plotting Date: 6/21/2024

## SIGN A



12.0" Radius, 2.0" Border, Black on Orange;  
 'WIDTH RESTRICTION', D;

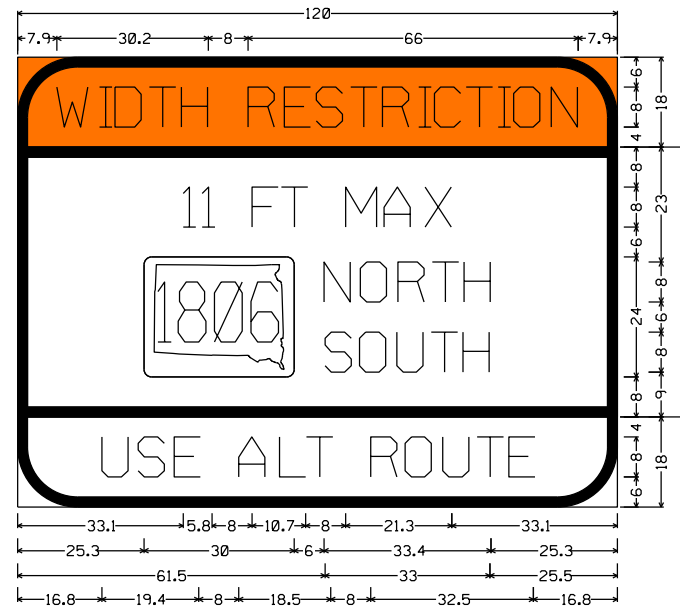
6.0" Radius, 2.0" Border, Black on White;  
 '11 FT MAX', D; 'NORTH', D;

12.0" Radius, 2.0" Border, Black on White;  
 'USE ALT ROUTE', D;

Table of letter and object lefts

W	I	D	T	H	R	E	S	T	R	I	C	T	I	O	N
7.9	16.4	19.5	26.4	32.7	46.1	53.4	59.7	66.6	73.0	80.3	83.4	89.8	96.1	99.3	106.8
I	I	F	T	M	A	X									
33.1	36.9	46.9	52.8	65.6	73.3	81.5									
N	O	R	T	H											
24.3	62.3	69.6	77.1	83.9	90.3										
U	S	E	A	L	T	R	O	U	T	E					
16.8	24.1	31.3	44.2	52.4	57.8	70.7	77.5	85.0	91.9	98.3					

## SIGN B



12.0" Radius, 2.0" Border, Black on Orange;  
 'WIDTH RESTRICTION', D;

6.0" Radius, 2.0" Border, Black on White;  
 '11 FT MAX', D; 'NORTH', D; 'SOUTH', D;

12.0" Radius, 2.0" Border, Black on White;  
 'USE ALT ROUTE', D;

Table of letter and object lefts

W	I	D	T	H	R	E	S	T	R	I	C	T	I	O	N
7.9	16.4	19.5	26.4	32.7	46.1	53.4	59.7	66.6	73.0	80.3	83.4	89.8	96.1	99.3	106.8
I	I	F	T	M	A	X									
33.1	36.9	46.9	52.8	65.6	73.3	81.5									
N	O	R	T	H											
25.3	61.3	68.6	76.1	82.9	89.3										
S	O	U	T	H											
61.5	68.4	75.9	82.8	89.1											
U	S	E	A	L	T	R	O	U	T	E					
16.8	24.1	31.3	44.2	52.4	57.8	70.7	77.5	85.0	91.9	98.3					

Plot Scale - 1:200

Plotted From - evanwolf

File - ...width restriction signing.dgn



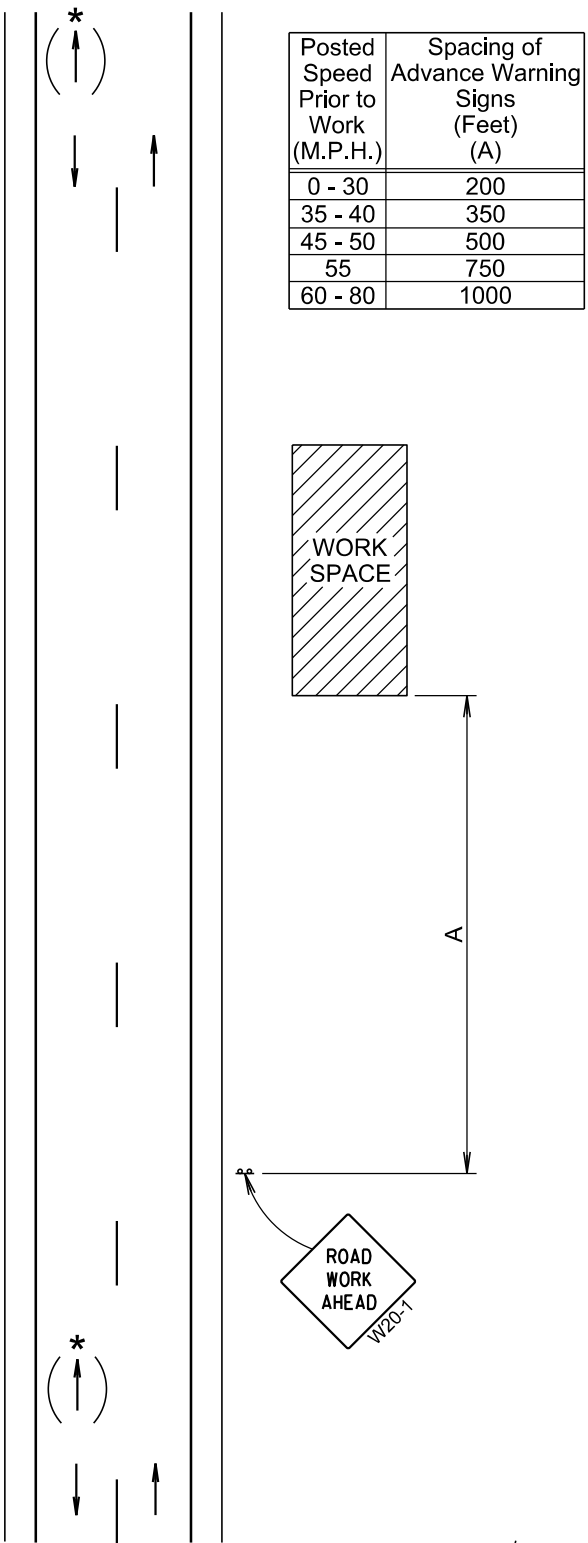
The signs illustrated are not required if the work space is behind a barrier, more than 2 feet behind the curb, or 15 feet or more from the edge of any roadway.

The signs illustrated will be used where there are distracting situations; such as: vehicles parked on shoulder, vehicles accessing the work site via the highway, and equipment traveling on or crossing the roadway to perform work operations.

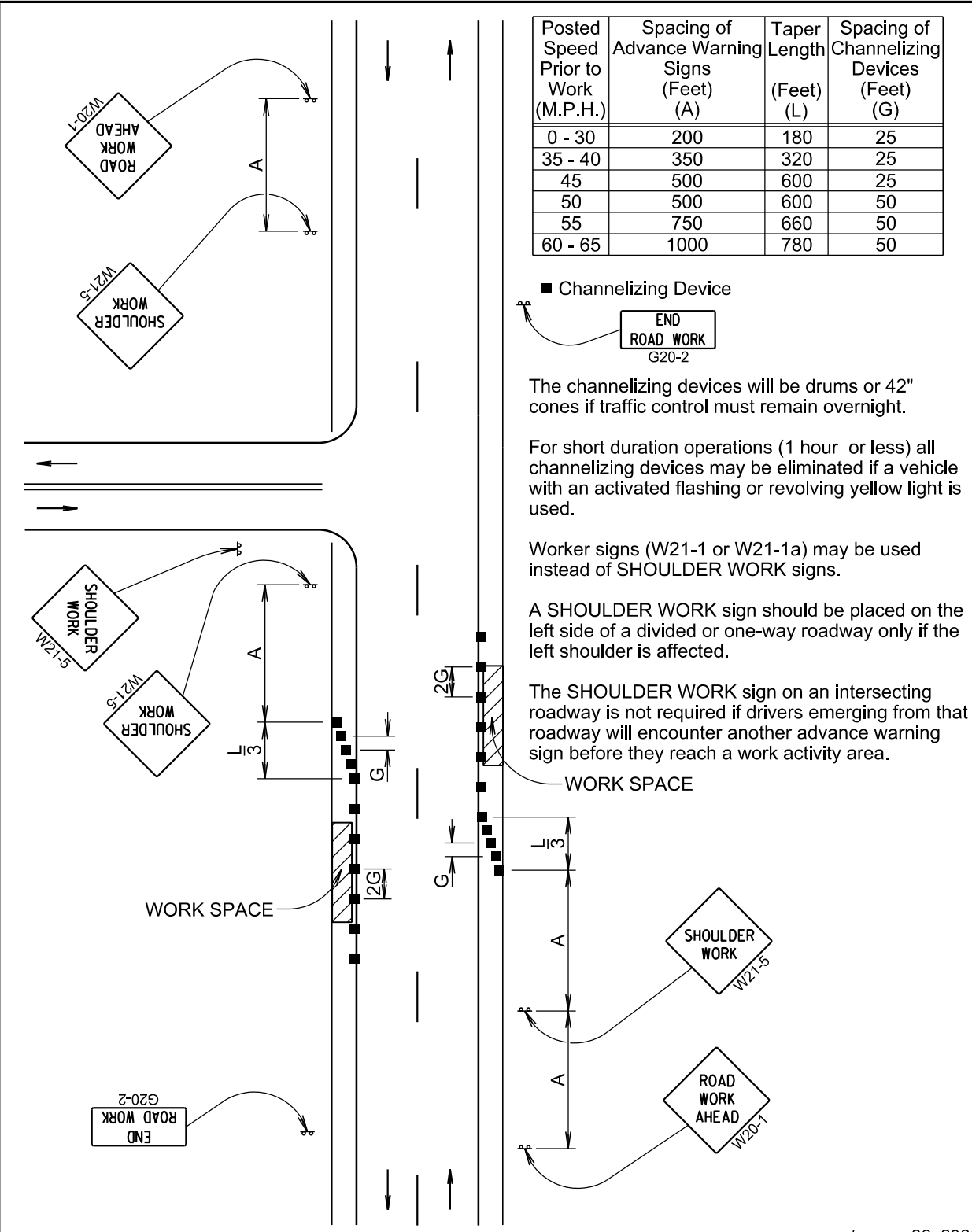
The ROAD WORK AHEAD sign may be replaced with other appropriate signs, such as the SHOULDER WORK sign. The SHOULDER WORK sign may be used for work adjacent to the shoulder.

\* If the work space is on a divided highway, an advance warning sign should also be placed on the left side of the directional roadway.

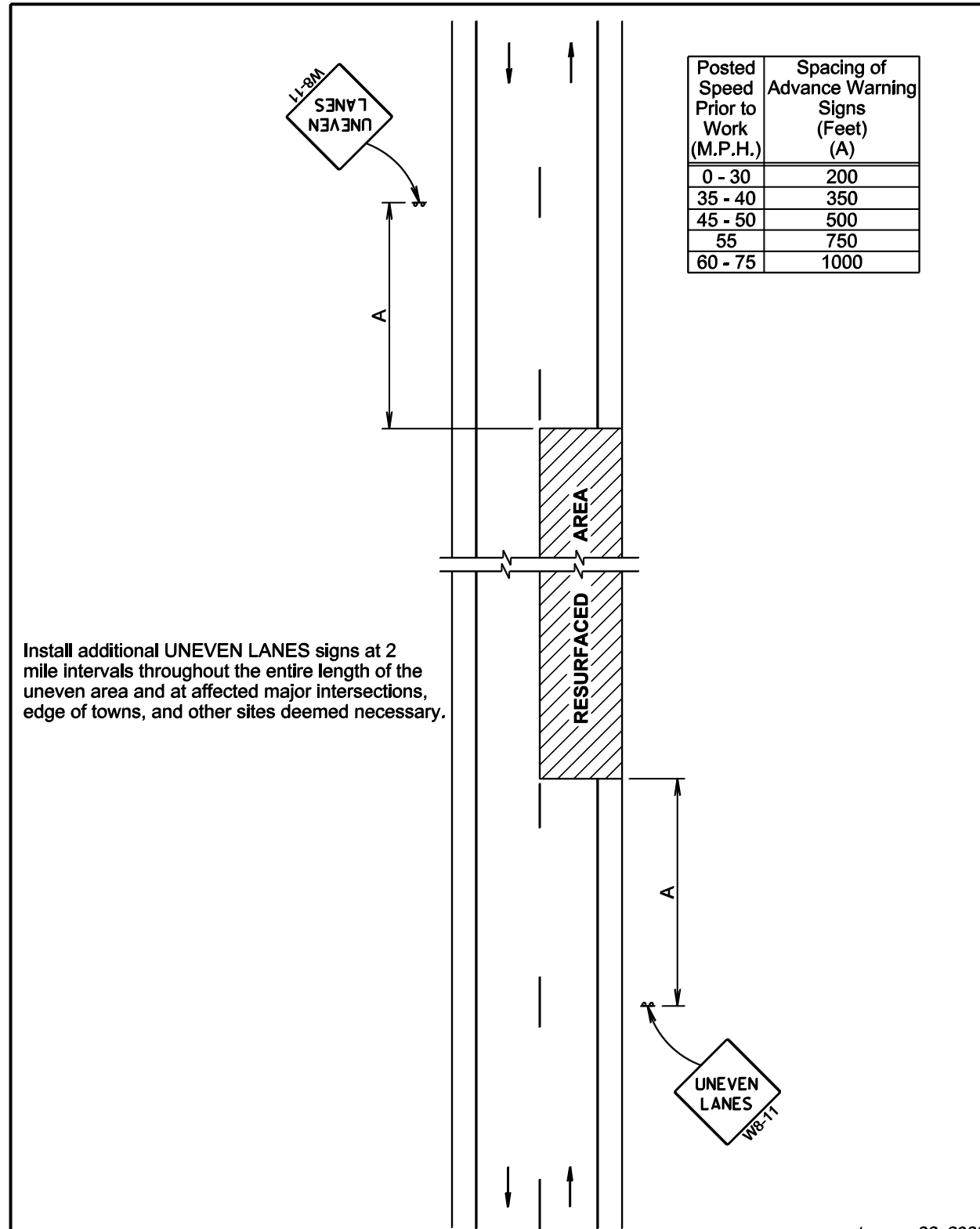
For short term, short duration, or mobile operations, all signs and channelizing devices may be eliminated if a vehicle with an activated flashing or revolving yellow light is used.



January 22, 2021



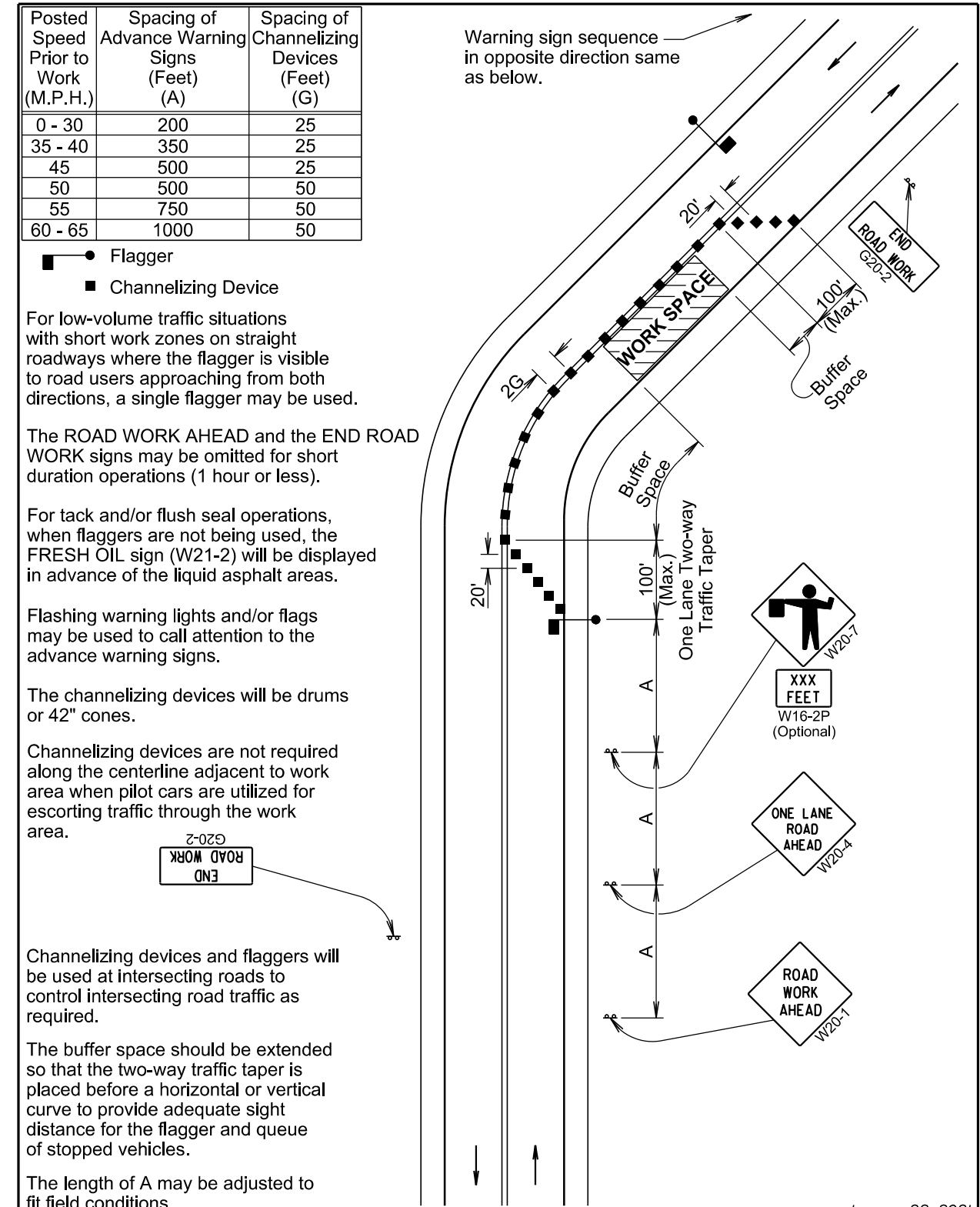
January 22, 2021



Install additional UNEVEN LANES signs at 2 mile intervals throughout the entire length of the uneven area and at affected major intersections, edge of towns, and other sites deemed necessary.

January 22, 2021

Published Date: 2025	S D D O T	UNEVEN ROAD SURFACE	PLATE NUMBER 634.22
			Sheet 1 of 1



For low-volume traffic situations with short work zones on straight roadways where the flagger is visible to road users approaching from both directions, a single flagger may be used.

The ROAD WORK AHEAD and the END ROAD WORK signs may be omitted for short duration operations (1 hour or less).

For tack and/or flush seal operations, when flaggers are not being used, the FRESH OIL sign (W21-2) will be displayed in advance of the liquid asphalt areas.

Flashing warning lights and/or flags may be used to call attention to the advance warning signs.

The channelizing devices will be drums or 42" cones.

Channelizing devices are not required along the centerline adjacent to work area when pilot cars are utilized for escorting traffic through the work area.

Channelizing devices and flaggers will be used at intersecting roads to control intersecting road traffic as required.

The buffer space should be extended so that the two-way traffic taper is placed before a horizontal or vertical curve to provide adequate sight distance for the flagger and queue of stopped vehicles.

The length of A may be adjusted to fit field conditions.

Warning sign sequence in opposite direction same as below.

END ROAD WORK G20-2

W20-7

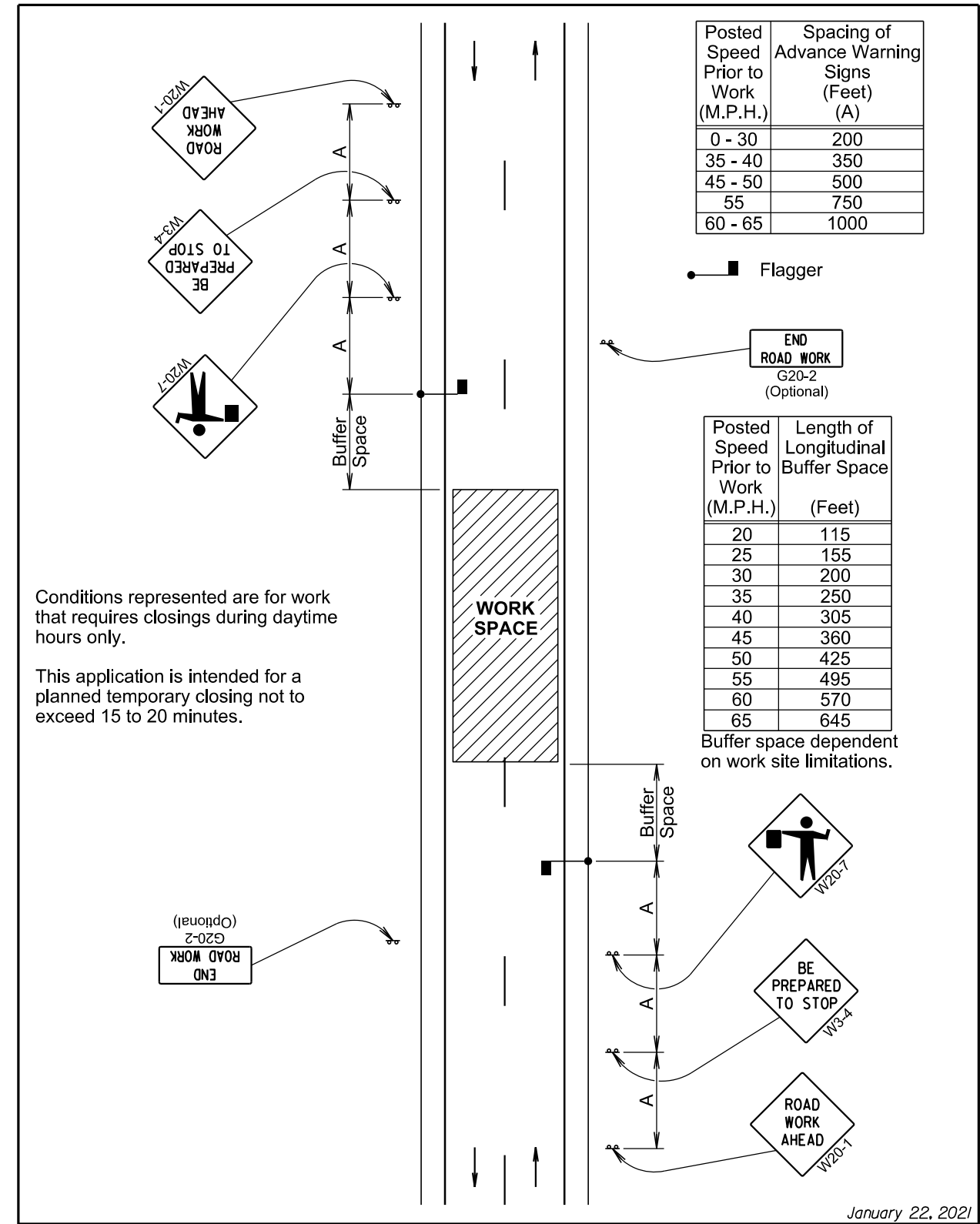
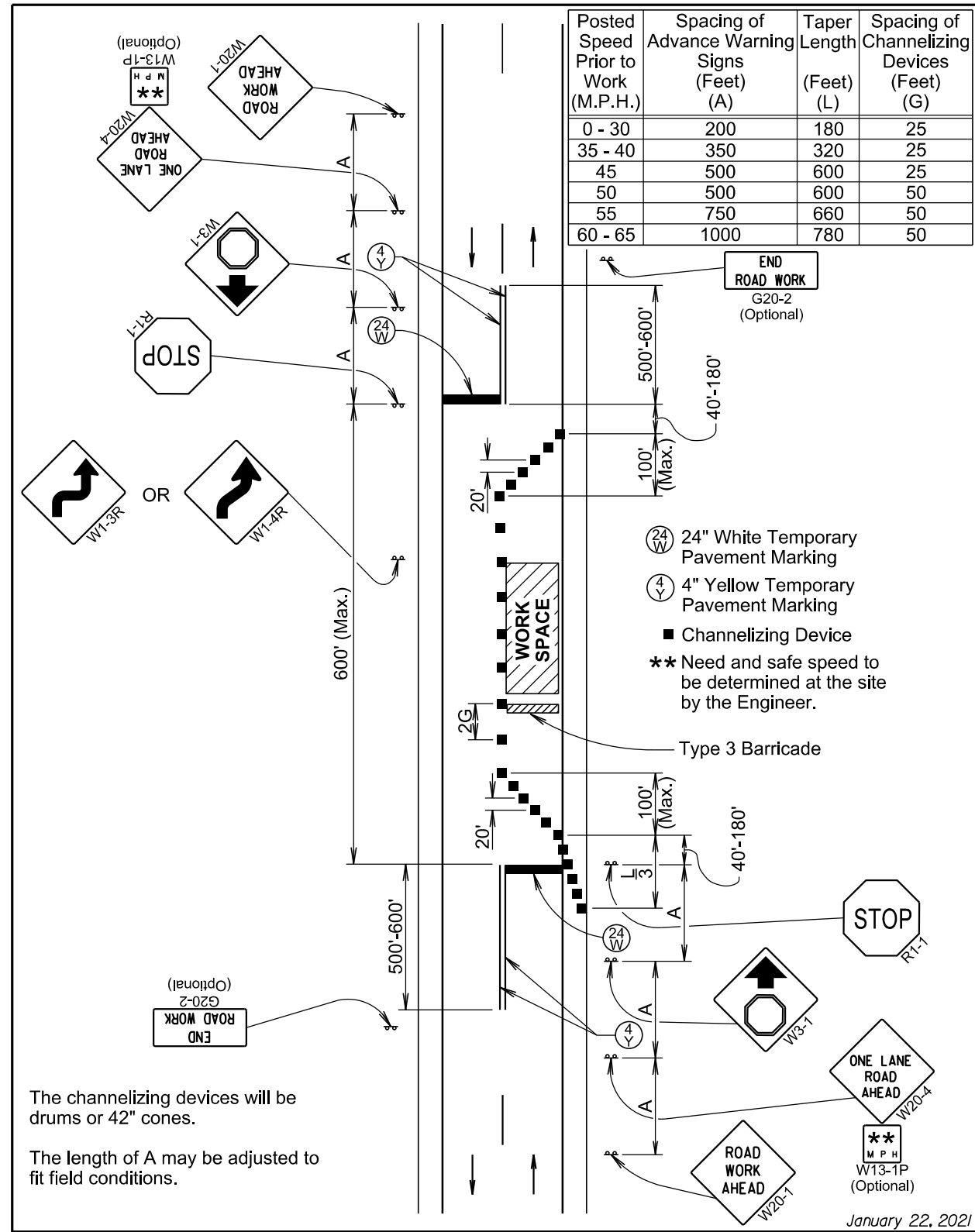
XXX FEET W16-2P (Optional)

ONE LANE ROAD AHEAD W20-4

ROAD WORK AHEAD W20-1

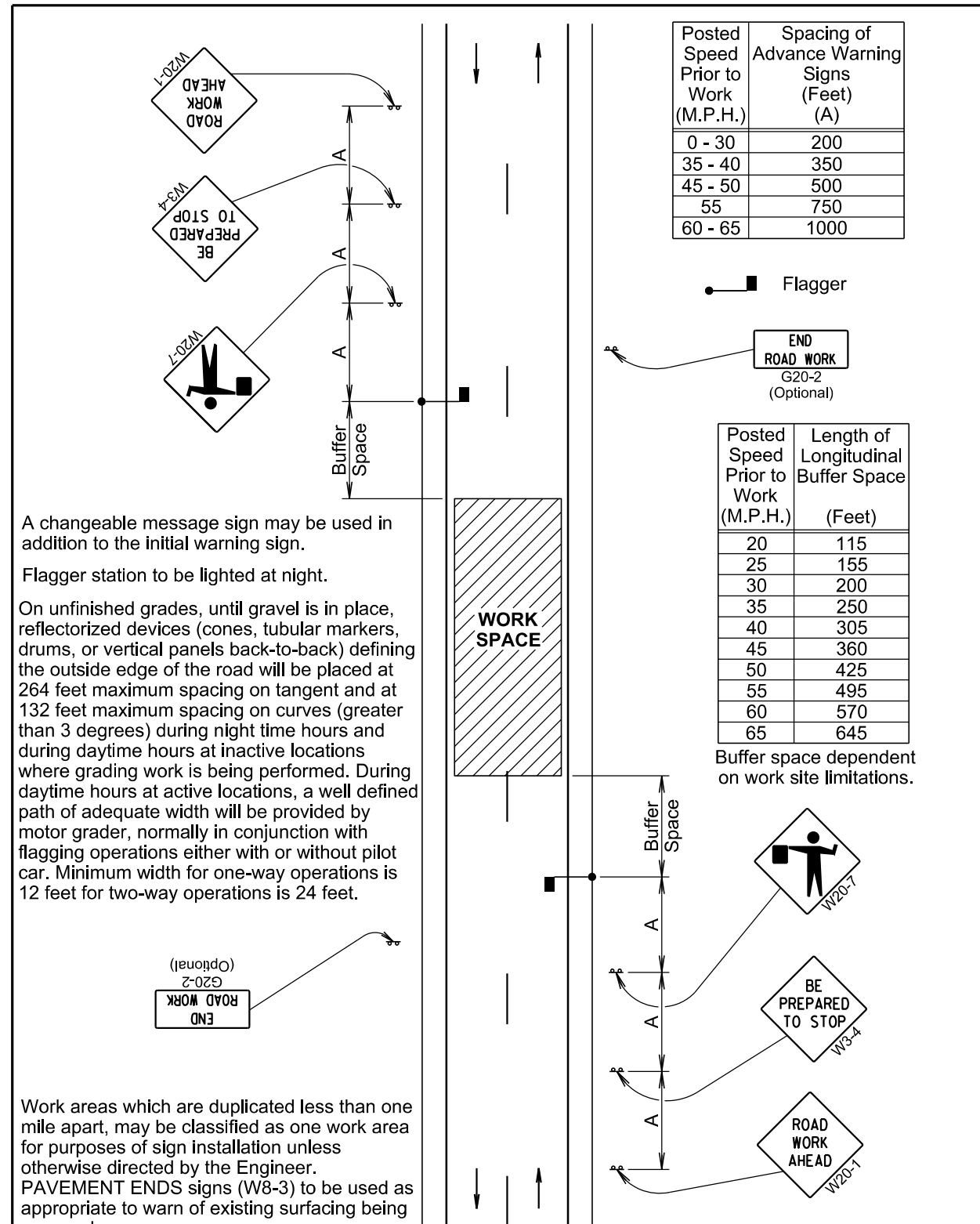
January 22, 2021

Published Date: 2025	S D D O T	LANE CLOSURE WITH FLAGGER PROVIDED	PLATE NUMBER 634.23
			Sheet 1 of 1



Conditions represented are for work that requires closings during daytime hours only.

This application is intended for a planned temporary closing not to exceed 15 to 20 minutes.



A changeable message sign may be used in addition to the initial warning sign.

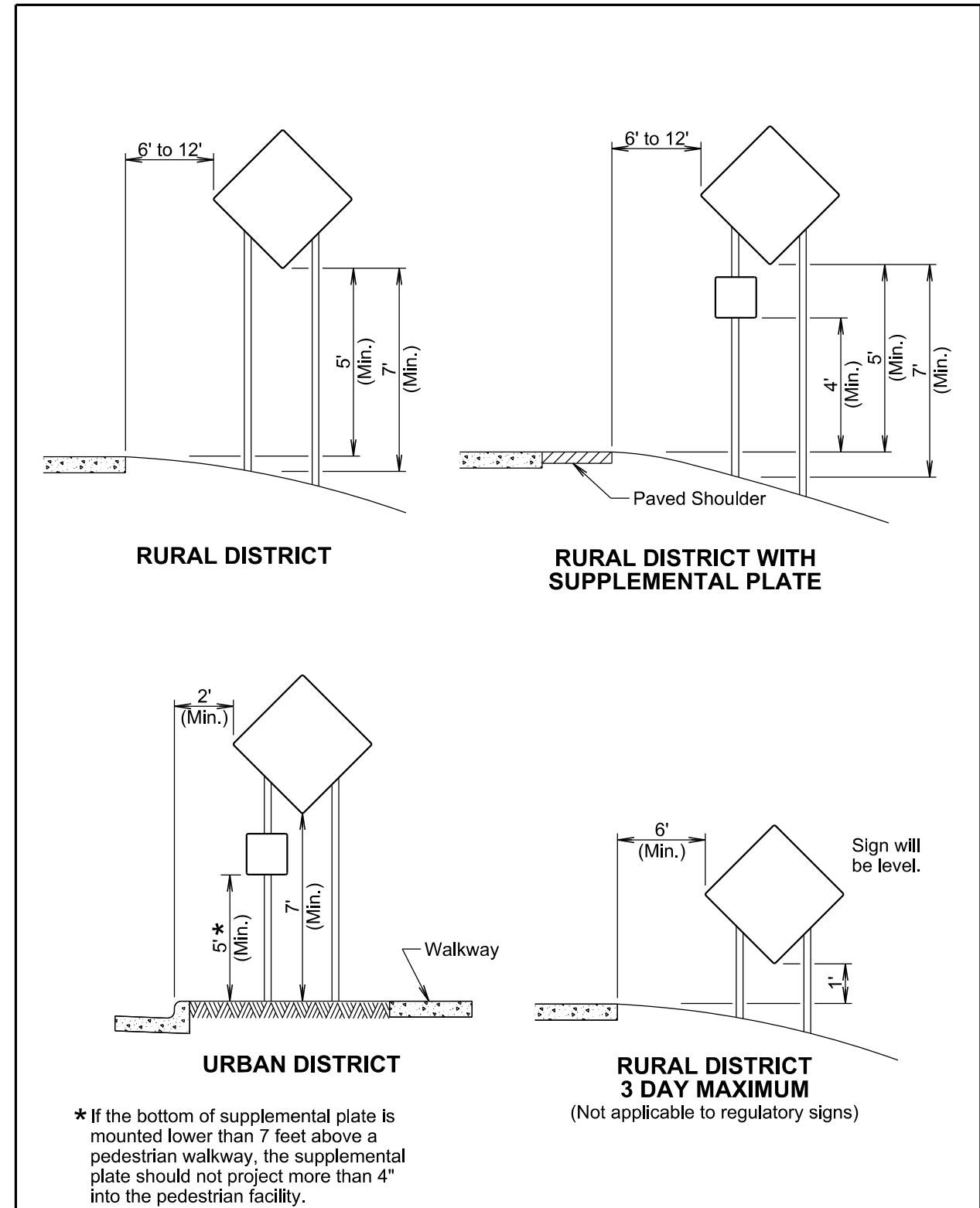
Flagger station to be lighted at night.

On unfinished grades, until gravel is in place, reflectorized devices (cones, tubular markers, drums, or vertical panels back-to-back) defining the outside edge of the road will be placed at 264 feet maximum spacing on tangent and at 132 feet maximum spacing on curves (greater than 3 degrees) during night time hours and during daytime hours at inactive locations where grading work is being performed. During daytime hours at active locations, a well defined path of adequate width will be provided by motor grader, normally in conjunction with flagging operations either with or without pilot car. Minimum width for one-way operations is 12 feet for two-way operations is 24 feet.

Work areas which are duplicated less than one mile apart, may be classified as one work area for purposes of sign installation unless otherwise directed by the Engineer. PAVEMENT ENDS signs (W8-3) to be used as appropriate to warn of existing surfacing being removed.

January 22, 2021

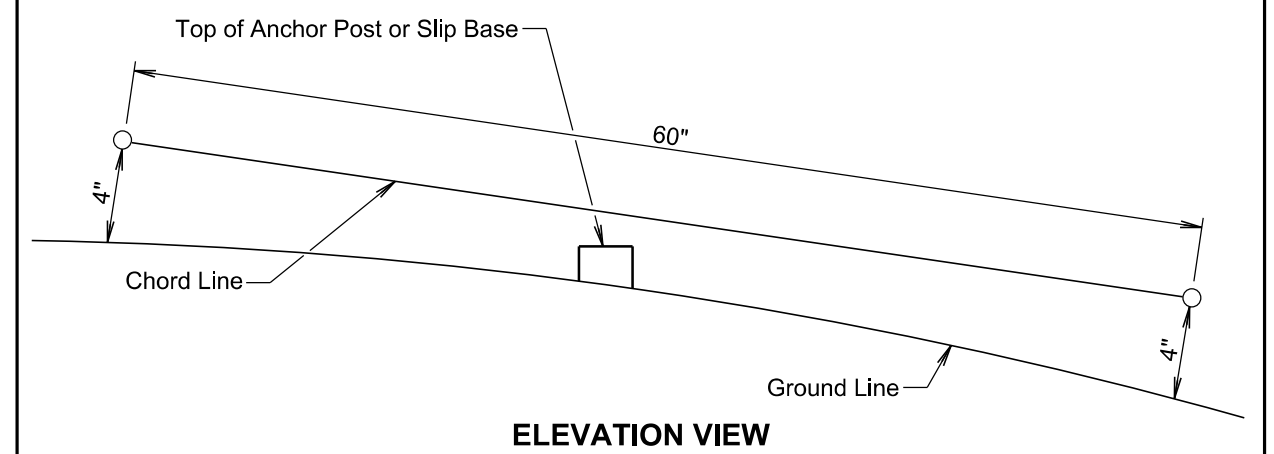
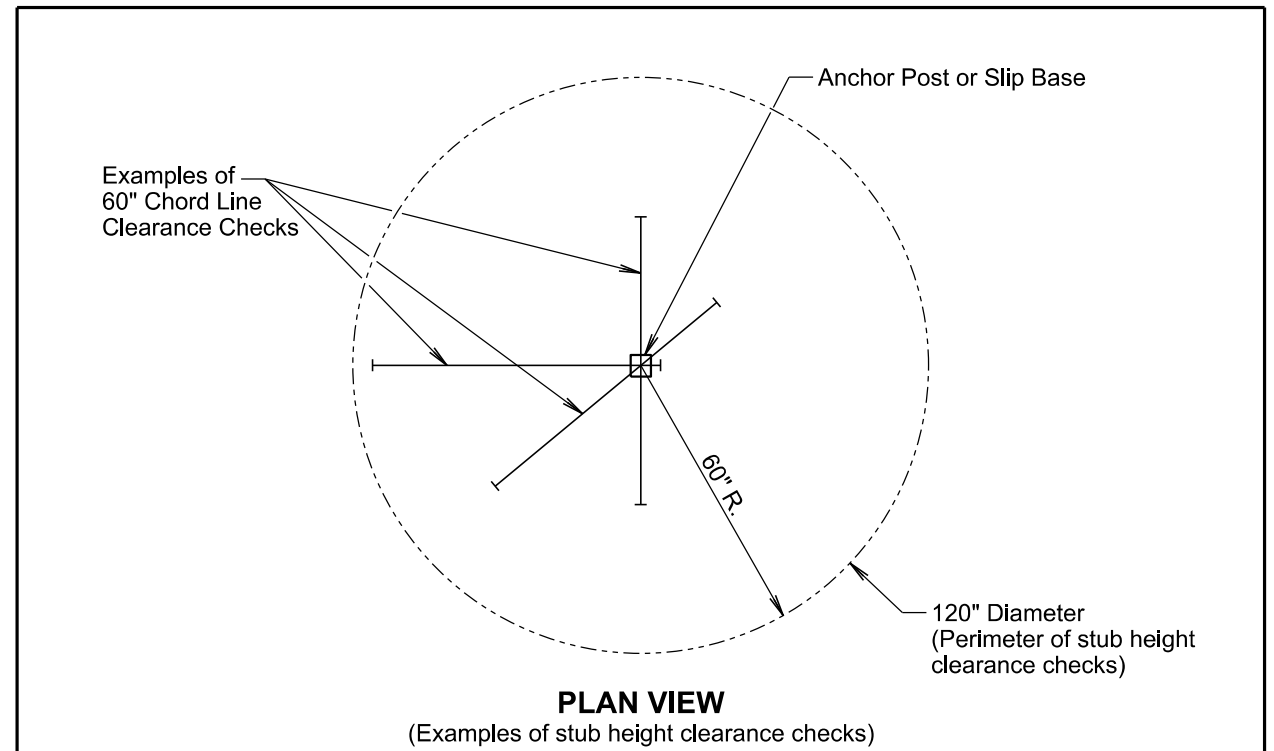
Published Date: 2025	S D D O T	LONG TERM ROAD WORK	PLATE NUMBER
			634.31
			Sheet 1 of 1



\* If the bottom of supplemental plate is mounted lower than 7 feet above a pedestrian walkway, the supplemental plate should not project more than 4" into the pedestrian facility.

January 22, 2021

Published Date: 2025	S D D O T	CRASHWORTHY SIGN SUPPORTS (Typical Construction Signing)	PLATE NUMBER
			634.85
			Sheet 1 of 1



**GENERAL NOTES:**

The top of anchor posts and slip bases WILL NOT extend above a 60" chord line within a 120" diameter circle around the post with ends 4" above the ground.

At locations where there is curb and gutter adjacent to the breakaway sign support, the stub height will be a maximum of 4" above the ground line at the localized area adjacent to the breakaway support stub.

The 4" stub height clearance is not necessary for U-channel lap splices where the support is designed to yield (bend) at the base.

January 22, 2021

Published Date: 2025	S D D O T	BREAKAWAY SUPPORT STUB CLEARANCE	PLATE NUMBER
			634.99
			Sheet 1 of 1