

# Section M: Pavement Marking Plans

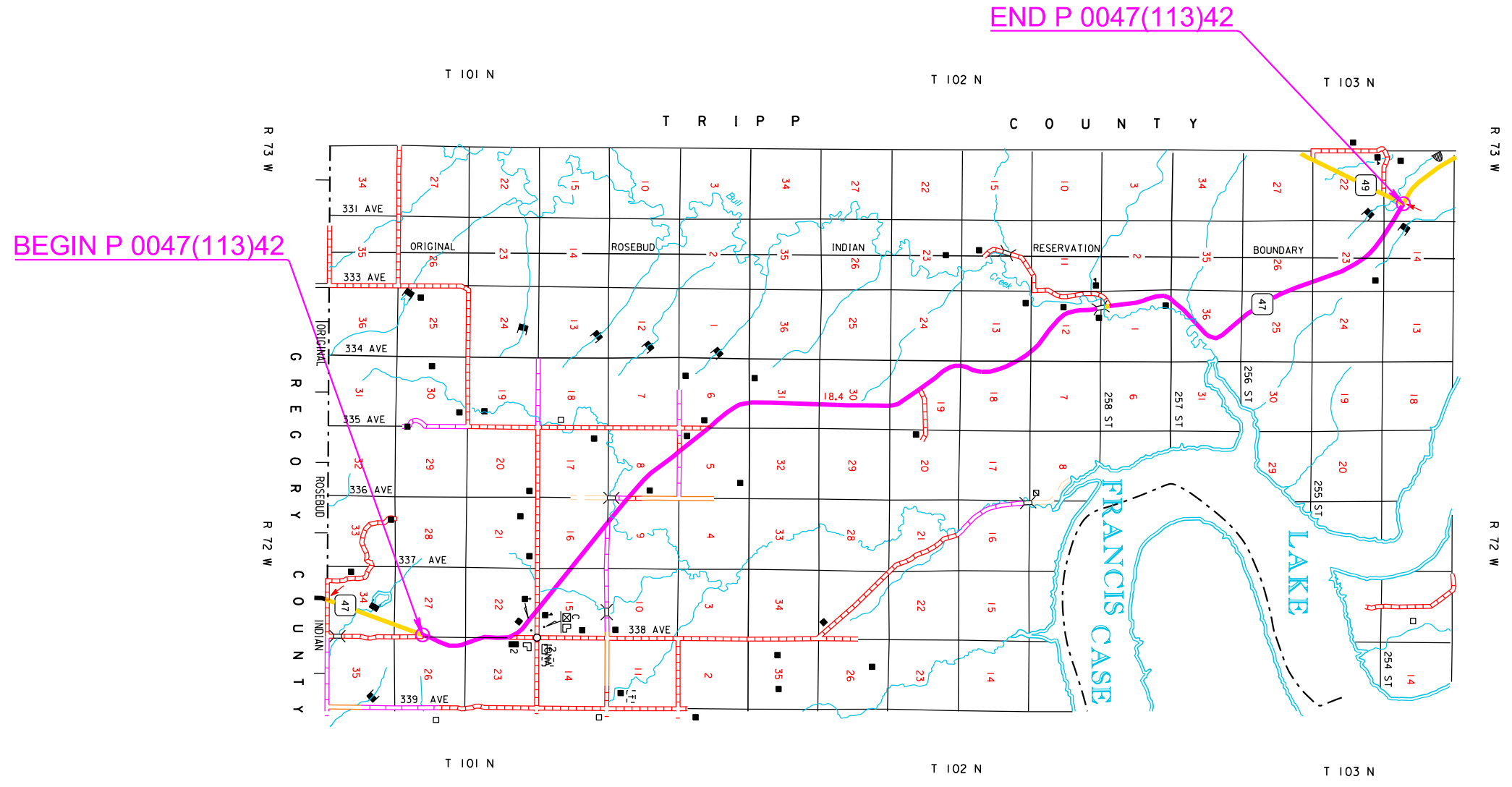
FOR BIDDING PURPOSES ONLY

STATE OF SOUTH DAKOTA	PROJECT	SHEET	TOTAL SHEETS
	P 0047(113)42	M1	M4

Plotting Date: 07/26/2024

## INDEX OF SHEETS

- M1: Title Sheet
- M2: Estimate of Quantities & Notes
- M3: Jct. SD 47 & SD 49 Layout
- M4: Standard Plates



Plot Scale - 1:200

Plotted From - TRPR25288

File - ...npj2024\lymm05\UN1Title.dgn

**SECTION M ESTIMATE OF QUANTITIES**

BID ITEM NUMBER	ITEM	QUANTITY	UNIT
633E1200	High Build Waterborne Pavement Marking Paint, White	722	Gal
633E1205	High Build Waterborne Pavement Marking Paint, Yellow	459	Gal
633E1262	High Build Waterborne Pavement Marking Paint, 24" Yellow	145	Ft
633E1272	High Build Waterborne Pavement Marking Paint, Arrow	4	Each

**PAVEMENT MARKING PAINT**

The Contractor will advise the Engineer a minimum of 3 weeks prior to the application of the permanent pavement marking to allow the State to check and mark the location of no passing zones.

The application of permanent pavement marking will begin no sooner than 7 calendar days following completion of the fog or flush seal. Application of permanent pavement marking will be completed within 14 calendar days following completion of the final surfacing.

**HIGH BUILD WATERBORNE PAVEMENT MARKING PAINT**

All materials will be applied as per manufacturer's recommendations. High build waterborne pavement marking paint will conform to the supplemental specifications for Section 980.1 B.

Reflective media will consist of glass beads. Reflective media will require a Certificate of Compliance for Certification for each source and lot. Acceptance sampling will not be required.

**RATES OF MATERIALS FOR HIGH BUILD WATERBORNE PAVEMENT MARKING PAINT**

Solid 4" line = 22.5 Gals/Mile  
 Dashed 4" line = 6.2 Gal/Mile  
 Glass Beads = 8 Lbs/Gal.

All cost for materials, labor, and equipment necessary to furnish and install the pavement markings will be incidental to the contract unit price for the respective High Build Waterborne Pavement Marking Paint items.

**RETROREFLECTIVITY FOR PAVEMENT MARKING PAINT**

The Department may take retroreflectivity readings on the pavement marking lines after 2 days and within 30 days of the line application using either a portable or mobile retroreflectometer that conforms to 30-meter geometry. If the Department chooses to take retroreflectivity readings, three retroreflectivity readings will be taken on each line at each test location. The three readings will be averaged and become the reading for that test location.

If the Department chooses to take retroreflectivity readings, three readings will be taken on the edge lines and lane lines in the direction of application. For combination solid yellow and skip yellow lines for turn lanes and for centerline markings on two-way roadways, three readings will be taken in one direction, the reflectometer will be turned 180 degrees and three more readings will be taken. The six readings for the centerline markings will be averaged and become the test reading for that test location.

If the Department chooses to take readings, the minimum retroreflectivity values will be 275 mc/m<sup>2</sup>/lux for white and 170 mc/m<sup>2</sup>/lux for yellow.

**PAVEMENT MARKING**

Typical pavement marking as shown on this sheet will be applied throughout the entire length of two lane roadway.

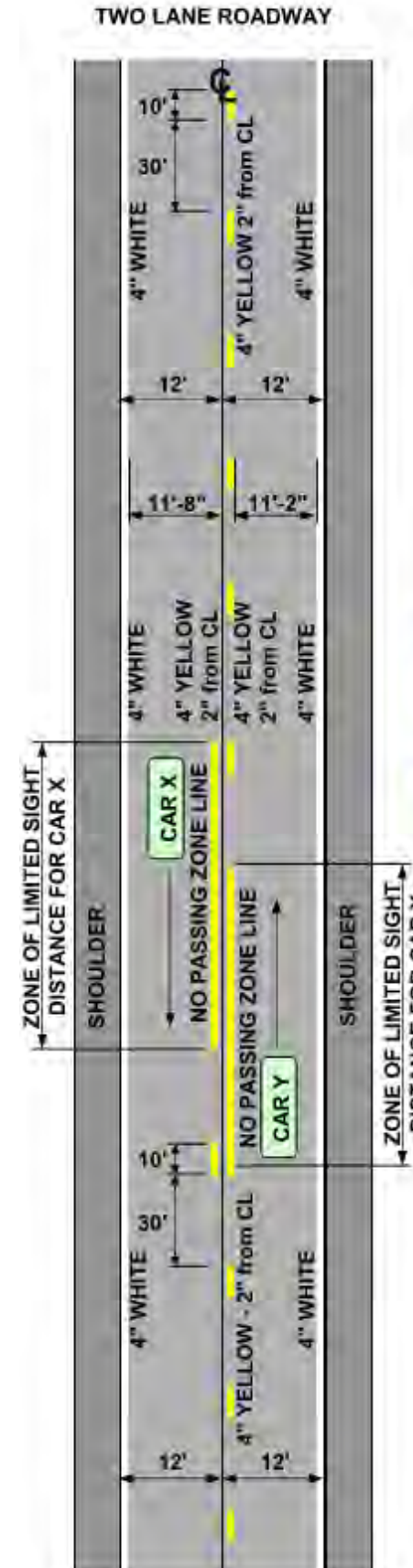
Traffic Control will be incidental to the cost of application. The striping and advance or trailing warning vehicle will be equipped with flashing amber lights and advance warning arrow board.

Application rates will be as follows:

Two Lane Roadway (Rates for one line)	
Dashed Yellow Centerline	Rate = 6.2 Gals./Pass-Mile
Solid Yellow Centerline	Rate = 22.5 Gals./Pass-Mile
Solid White Edgeline	Rate = 22.5 Gals./Pass-Mile

4" Yellow Skip Centerline (when not adjacent to a 4" Yellow No Passing Zone) will be placed consistently to the south or east side of centerline.

ESTIMATED QUANTITIES (BASED ON ONE APPLICATION)	
PAINT	QUANTITY
WHITE	722 GALLONS
YELLOW	459 GALLONS



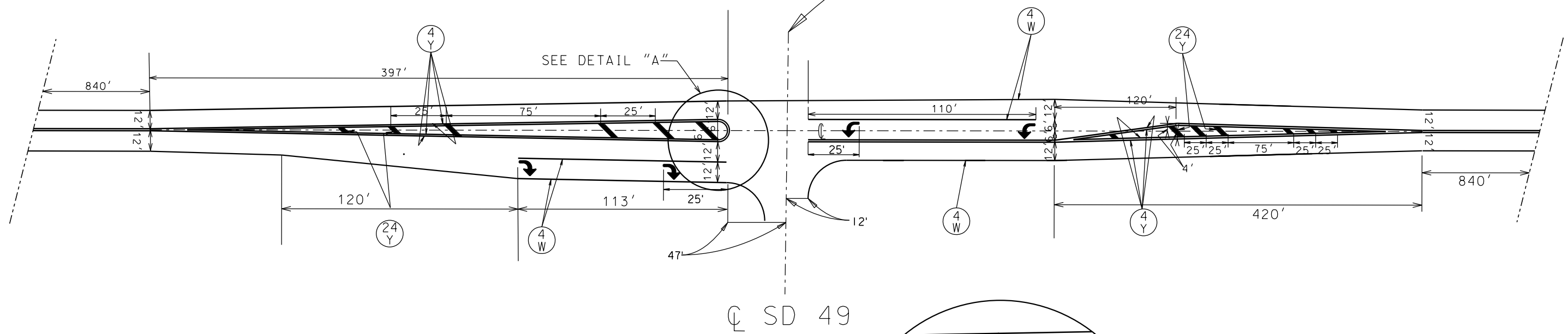
STATE OF	PROJECT	SHEET NO.	TOTAL SHEETS
S.D.	P 0047(113)42	M3	M4

# STRIPING LAYOUT DIAGRAM

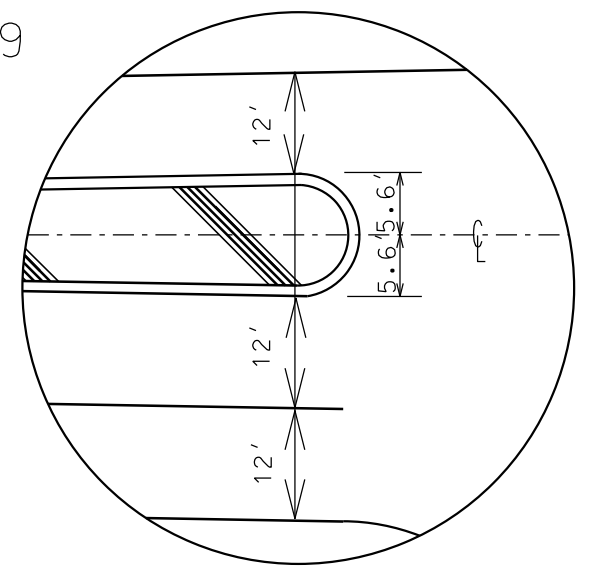
## JCT SD 47 & SD 49



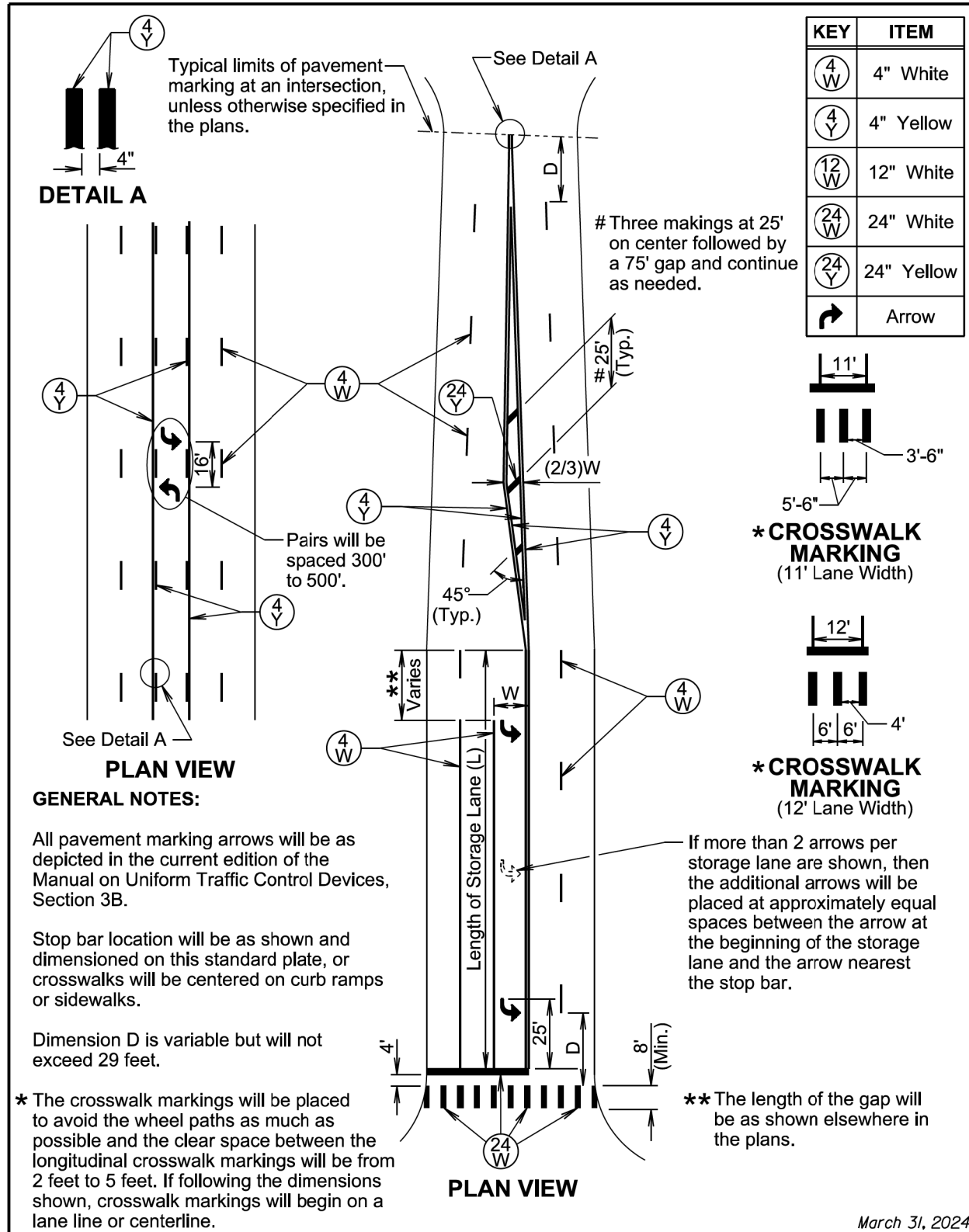
CL SD 49 =  
Sta. 513+76 on SD 47



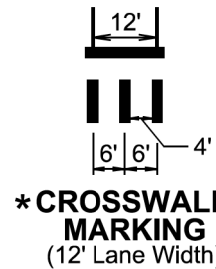
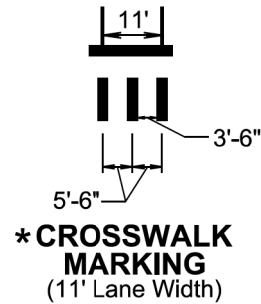
- (24 Y) 24" Yellow Pavement Marking
- (4 W) 4" White Pavement Marking
- (4 Y) 4" Yellow Pavement Marking



DETAIL "A"



KEY	ITEM
(4 W)	4" White
(4 Y)	4" Yellow
(12 W)	12" White
(24 W)	24" White
(24 Y)	24" Yellow
↷	Arrow



\* Messages on signs will vary depending on the operation being conducted.

Vehicle-mounted signs will be mounted in a manner such that they are not obscured by equipment or supplies. Sign legends on vehicle-mounted signs will be covered or turned from view when work is not in progress.

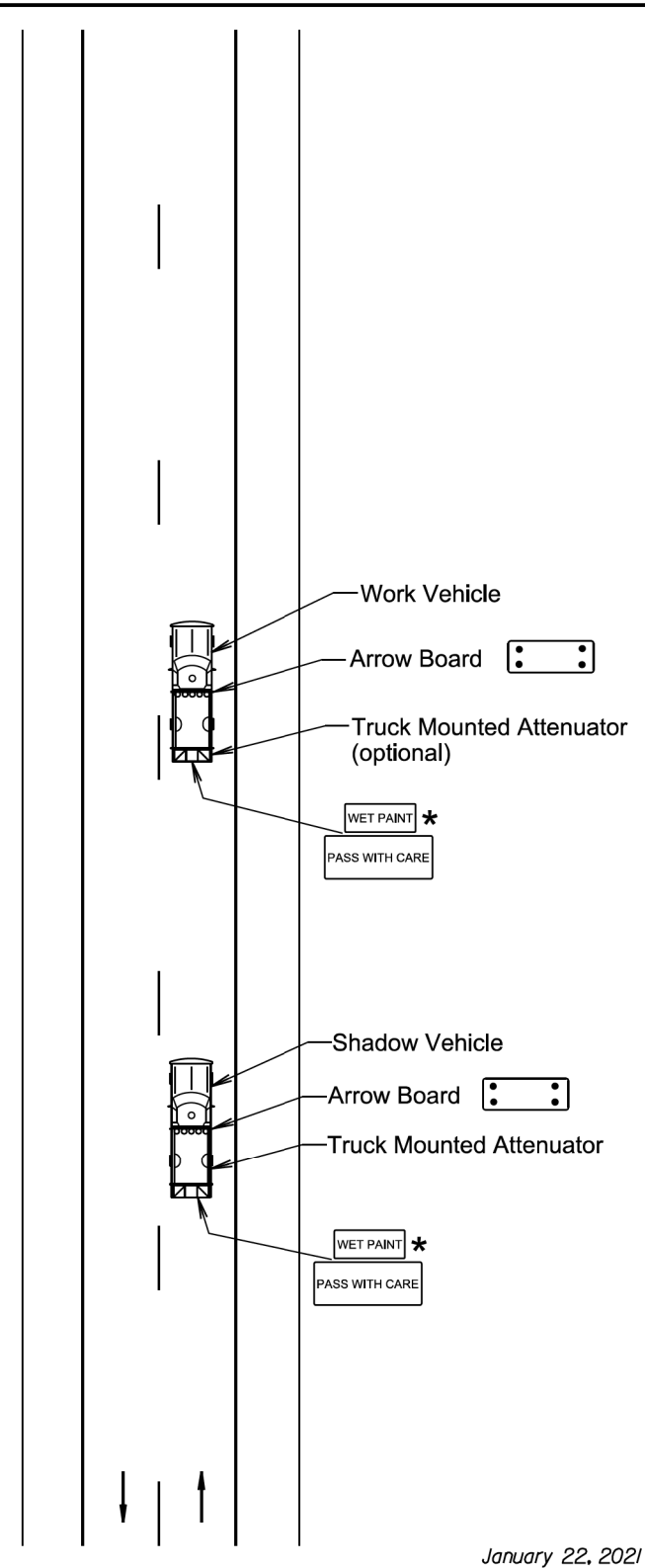
Shadow and Work vehicles will display high-intensity rotating, flashing, oscillating, or strobe lights, flags, signs, or arrow boards.

Vehicle hazard warning signals will not be used instead of the vehicle's high-intensity rotating, flashing, oscillating, or strobe lights.

When an arrow board is used, it will be used in the caution mode. Marching Diamonds are acceptable.

Arrow boards will, as a minimum, be Type B, with a size of 60" x 30".

All costs associated with the traffic control for mobile operation including signs, arrow boards and equipment will be incidental to the contract lump sum price for "Traffic Control, Miscellaneous".



Plot Scale - 1:200

Plotted From - TRPR25289

File - ...Section\Std Plates.dgn

Published Date: 2025	S D D O T	PAVEMENT MARKINGS FOR ADJACENT INTERSECTIONS AND CENTER TURN LANE	PLATE NUMBER 633.01
			Sheet 1 of 1

Published Date: 2025	S D D O T	MOBILE OPERATIONS ON 2-LANE ROAD	PLATE NUMBER 634.06
			Sheet 1 of 1