

STATE OF SOUTH DAKOTA
DEPARTMENT OF TRANSPORTATION
PLANS FOR PROPOSED

SD DOT	PROJECT	SECTION	SHEET
	PH 0040(325)	Non	1/20

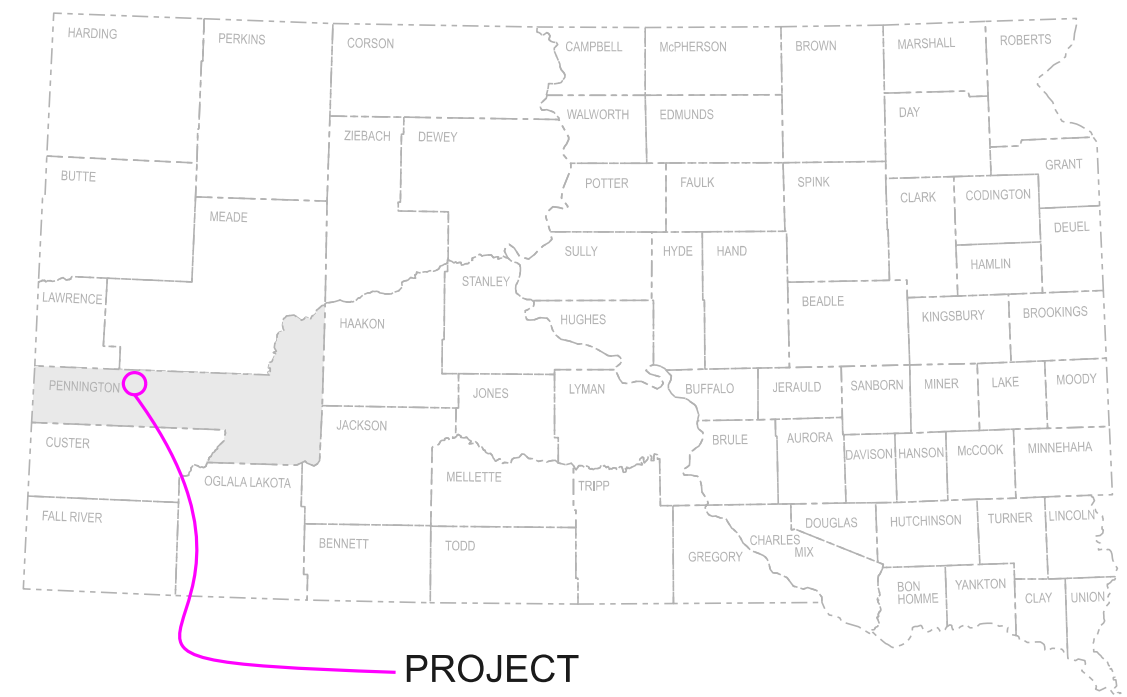
Plotting Date: 05/03/2024

PROJECT PH 0040 (325)
US HWY 16B & SD HWY 44
PENNINGTON COUNTY

COLD APPLIED PLASTIC PAVEMENT MARKING
PCN 05VN

INDEX OF SHEETS

1	General Layout with Index
2-3	Estimate With General Notes
4	Quantity Table
5-14	Pavement Marking Layouts
15-20	Standard Plates



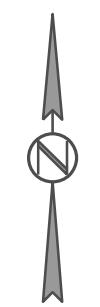
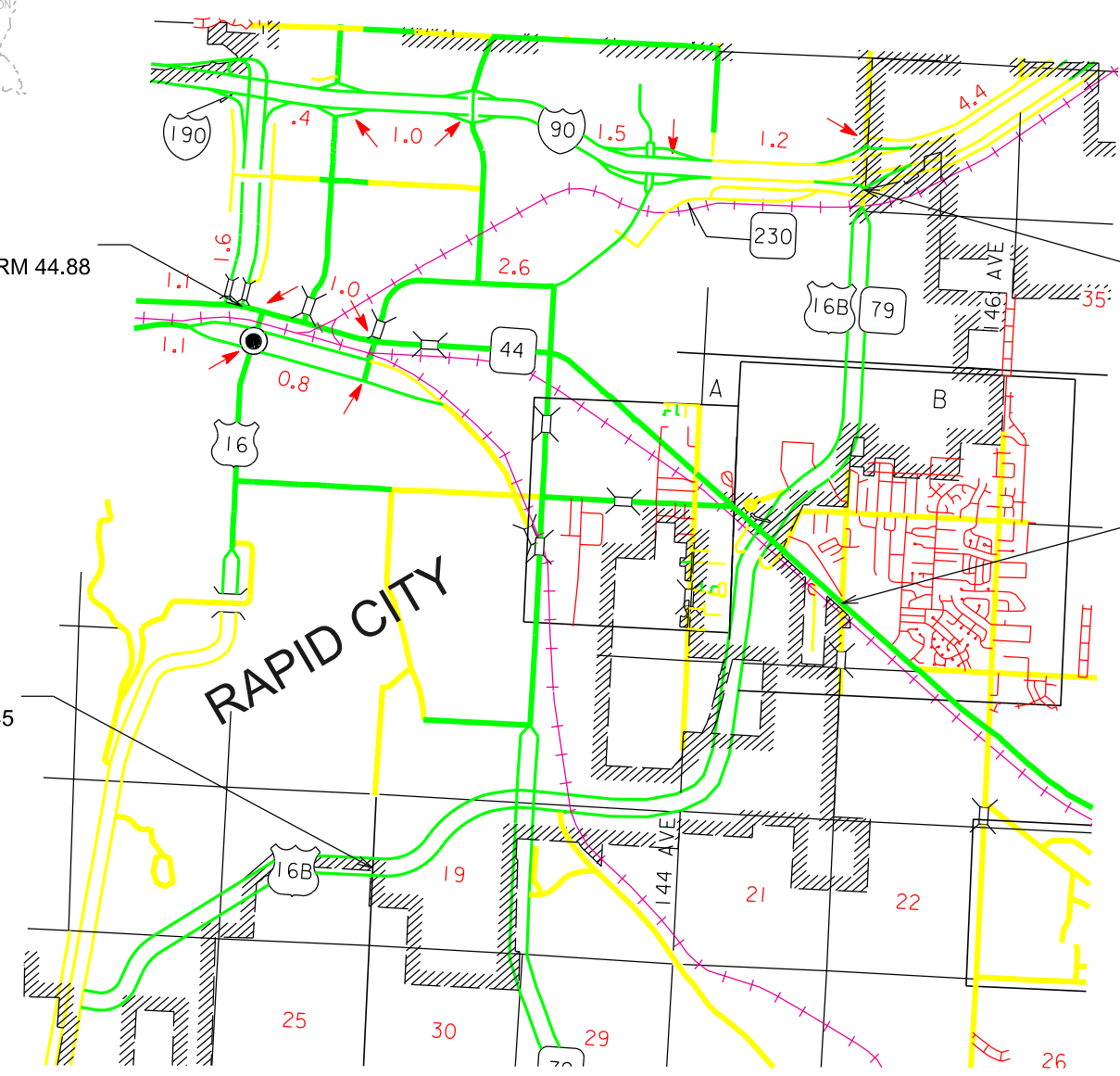
PROJECT

Begin Project
SD HWY 44 MRM 44.88

End Project
US 16B MRM 72.93

Begin Project
US 16B MRM 66.45

End Project
SD HWY 44 MRM 49.90



DESIGN DESIGNATION
SD Hwy 44 MRM 44.02 - 49.90

ADT (2023)	17333
ADT (2043)	23833
DHV	0
D	50%
T DHV	1
T ADT	2.1%
V	40

DESIGN DESIGNATION
US Hwy 16 EB MRM 66.45 - 72.93

ADT (2023)	9591
ADT (2043)	13188
DHV	0
D	100%
T DHV	4.9%
T ADT	10.8%
V	60

DESIGN DESIGNATION
US Hwy 16 WB MRM 66.45 - 72.93

ADT (2023)	9591
ADT (2043)	13188
DHV	0
D	100%
T DHV	4.6%
T ADT	10.2%
V	60

STORM WATER PERMIT
None Required

Total Length 11.5 Miles

6

June 26, 2024

ESTIMATE OF QUANTITIES

BID ITEM NUMBER	ITEM	QUANTITY	UNIT
009E0010	Mobilization	Lump Sum	LS
633E0010	Cold Applied Plastic Pavement Marking, 4"	46,925	Ft
633E0011	State Furnished Cold Applied Plastic Pavement Marking, 4"	67,500	Ft
633E0020	Cold Applied Plastic Pavement Marking, 8"	4,234	Ft
633E0025	Cold Applied Plastic Pavement Marking, 12"	1,620	Ft
633E0030	Cold Applied Plastic Pavement Marking, 24"	1,100	Ft
633E0035	Cold Applied Plastic Pavement Marking, Area	29	SqFt
633E0040	Cold Applied Plastic Pavement Marking, Arrow	284	Each
633E0050	Cold Applied Plastic Pavement Marking, Message	2	Word
633E0055	Cold Applied Plastic Pavement Marking, Railroad Crossing	14	Each
633E5050	Surface Preparation for Pavement Marking	134,353	Ft
633E5051	Surface Preparation for Pavement Marking	29	SqFt
633E5052	Surface Preparation for Pavement Marking	284	Each
633E5052	Surface Preparation for Pavement Marking	14	Each
633E5052	Surface Preparation for Pavement Marking	2	Each
634E0010	Flagging	25.0	Hour
634E0110	Traffic Control Signs	279.2	SqFt
634E0120	Traffic Control, Miscellaneous	Lump Sum	LS
634E0275	Type 3 Barricade	4	Each
634E0420	Type C Advance Warning Arrow Board	2	Each
634E0565	Remove Pavement Marking, Arrow	2	Each
634E0575	Remove Pavement Marking, Area	55.0	SqFt

SPECIFICATIONS

Standard Specifications for Roads and Bridges, 2015 Edition and Required Provisions, Supplemental Specifications, and Special Provisions as included in the Proposal.

ENVIRONMENTAL COMMITMENTS

The SDDOT is committed to protecting the environment and uses Environmental Commitments as a communication tool for the Engineer and Contractor to ensure that attention is given to avoid, minimize, and/or mitigate an environmental impact. Environmental commitments to various agencies and the public have been made to secure approval of this project. An agency with permitting authority can delay a project if identified environmental impacts have not been adequately addressed. Unless otherwise designated, the Contractor's primary contact regarding matters associated with these commitments will be the Project Engineer. During construction, the Project Engineer will verify that the Contractor has met Environmental Commitment requirements. These environmental commitments are not subject to change without prior written approval from the SDDOT Environmental Office.

Additional guidance on SDDOT's Environmental Commitments can be accessed through the Environmental Procedures Manual found at: <https://dot.sd.gov/media/documents/EnvironmentalProceduresManual.pdf> >

For questions regarding change orders in the field that may have an effect on an Environmental Commitment, the Project Engineer will contact the Environmental Engineer at 605-773-3180 or 605-773-4336 to determine whether an environmental analysis and/or resource agency coordination is necessary.

Once construction is complete, the Project Engineer will review all environmental commitments for the project and document their completion.

COMMITMENT H: WASTE DISPOSAL SITE

The Contractor will furnish a site(s) for the disposal of construction and/or demolition debris generated by this project.

Action Taken/Required:

Construction and/or demolition debris may not be disposed of within the Public ROW.

The waste disposal site(s) will be managed and reclaimed in accordance with the following from the General Permit for Construction/Demolition Debris Disposal Under the South Dakota Waste Management Program issued by the Department of Agriculture and Natural Resources.

The waste disposal site(s) will not be located in a wetland, within 200 feet of surface water, or in an area that adversely affects wildlife, recreation, aesthetic value of an area, or any threatened or endangered species, as approved by the Environmental Office and the Project Engineer.

If the waste disposal site(s) is located such that it is within view of any ROW, the following additional requirements will apply:

1. Construction and/or demolition debris consisting of concrete, asphalt concrete, or other similar materials will be buried in a trench separate from wood debris. The final cover over the construction and/or demolition debris will consist of a minimum of 1 foot of soil capable of supporting vegetation. Waste disposal sites provided outside of the Public ROW will be seeded in accordance with Natural Resources Conservation Service recommendations. The seeding recommendations may be obtained through the appropriate County NRCS Office. The Contractor will control the access to waste disposal sites not within the Public ROW with fences, gates, and placement of a sign or signs at the entrance to the site stating, "No Dumping Allowed".
2. Concrete and asphalt concrete debris may be stockpiled within view of the ROW for a period not to exceed the duration of the project. Prior to project completion, the waste will be removed from view of the ROW or buried, and the waste disposal site reclaimed as noted above.

The above requirements will not apply to waste disposal sites that are covered by an individual solid waste permit as specified in SDCL 34A-6-58, SDCL 34A-6-1.13, and ARSD 74:27:10:06. Failure to comply with the requirements stated above may result in civil penalties in accordance with South Dakota Solid Waste Law, SDCL 34A-6-1.31.

All costs associated with furnishing waste disposal site(s), disposing of waste, maintaining control of access (fence, gates, and signs), and reclamation of the waste disposal site(s) will be incidental to the various contract items.

COMMITMENT K: RAPID CITY AREA AIR QUALITY CONTROL ZONE

Administrative Rule of South Dakota (ARSD) 74:36:18:03 states that "no state facility or state contractor may engage in any construction activity or continuous operation activity within the Rapid City air quality control zone which may cause fugitive emissions of particulate to be released into the ambient air without first obtaining a permit issued by the board or the secretary."

Construction activity is defined as any temporary activity which involves the removal or alteration of the natural or pre-existing cover of one acre or more of land. One acre of surface area is based on a cumulative area of disturbance to be completed for the entire project. Construction activity will include, but not be limited to, stripping of topsoil, drilling, blasting, excavation, dredging, ditching, grading, street maintenance and repair, or earth moving. It also includes stockpiles, access roads, and disposal areas. An off-site disposal area of excess material will require an additional permit.

Action Taken/Required:

To be considered eligible for authorization to conduct a construction activity under the terms and conditions of this permit, the owner operator must submit a Notice of Intent (NOI) form. The form must be submitted to the address below at least seven business days prior to the anticipated date of beginning the construction activity.

South Dakota Department of Agriculture and Natural Resources Air Quality Program, 523 East Capitol, Joe Foss Building, Pierre, SD 57501-3181, Phone: 605-773-3151.

The permit requires the Contractor to use reasonably available technology to control fugitive dust emissions. The Contractor is required to use control measures for track out, paved areas, unpaved roads, unpaved parking lots, disturbed areas, and for material handling and storage. The control measures that the Contractor is required to use are listed in the permit.

The Rapid City Air Quality Permit will need to be renewed annually by the Contractor until construction activities are completed.

The online form can be found at: <https://danr.sd.gov/Environment/AirQuality/PermitForms/Forms/NOIConstruction%2021.docx> >

SEQUENCE OF OPERATIONS

The Contractor will submit a sequence of operations for approval two weeks prior to the preconstruction meeting. If changes to the sequence of operations are proposed during the project, these must be submitted for review a minimum of one week prior to potential implementation. Approval for changes to the sequence of operations will only be allowed when the proposed changes meet with the Department's intent for traffic control and sequencing of the work.

The Contractor will adhere to the following restrictions:

- The Contractor will not be allowed to work or close any lane during peak traffic hours. Peak hours are 7am to 9am and 3pm to 6pm.
- The Contractor will only work on one lane at a time.
- Lane closures will be limited to the length that the Contractor can surface prep and place during a working day.

GENERAL TRAFFIC CONTROL

Existing guide, route, informational logo, regulatory, and warning signs will be temporarily reset and maintained during construction. Removing, relocating, covering, salvaging, and resetting of existing traffic control devices, including delineation, will be the responsibility of the Contractor. Cost for this work will be incidental to the contract unit prices for the various items unless otherwise specified in the plans. Any delineators and signs damaged or lost will be replaced by the Contractor at no cost to the State.

All temporary traffic control sign locations will be set in the field by the Contractor and verified by the Engineer prior to installation.

Portable sign supports will not be located on sidewalks, bicycle facilities, or other areas designated for pedestrian or bicycle traffic.

All construction operations will be conducted in the general direction of traffic movement.

If there is a discrepancy between the traffic control plans, standard plates, and the MUTCD, whichever is more stringent will be used, as determined by the Engineer.

Fixed location signing placed more than 4 calendar days prior to the start of construction will be covered or laid down until the time of construction. The covers must be approved by the Engineer prior to installation. The cost of materials, labor, and equipment necessary to complete this work will be incidental to other contract items. No separate payment will be made.

All fixed location signs, sign posts, and breakaway bases will be removed within 7 calendar days following pavement marking.

TRAFFIC CONTROL SIGNS

Traffic control signs have been included in a table for each route. Payment will only be for those signs used on each route.

TABLE FOR TRAFFIC CONTROL SIGNS – SD HWY 44

ITEMIZED LIST FOR TRAFFIC CONTROL SIGNS

SIGN CODE	SIGN DESCRIPTION	CONVENTIONAL ROAD			
		NUMBER	SIGN SIZE	SQFT PER SIGN	SQFT
R1-1	STOP	1	30"	5.2	5.2
W4-2	LEFT or RIGHT LANE ENDS (symbol)	1	48" x 48"	16.0	16.0
W9-3	CENTER LANE CLOSED AHEAD	2	48" x 48"	16.0	32.0
W20-1	ROAD WORK AHEAD	2	48" x 48"	16.0	32.0
W20-5	LEFT or RIGHT LANE CLOSED AHEAD	2	48" x 48"	16.0	32.0
G20-2	END ROAD WORK	1	36" x 18"	4.5	4.5
CONVENTIONAL ROAD TRAFFIC CONTROL SIGNS SQFT					121.7

TABLE FOR TRAFFIC CONTROL SIGNS – US HWY 16B

ITEMIZED LIST FOR TRAFFIC CONTROL SIGNS

SIGN CODE	SIGN DESCRIPTION	CONVENTIONAL ROAD			
		NUMBER	SIGN SIZE	SQFT PER SIGN	SQFT
W4-2	LEFT or RIGHT LANE ENDS (symbol)	2	48" x 48"	16.0	32.0
W4-3	ADDED LANE (symbol)	1	48" x 48"	16.0	16.0
W5-4	RAMP NARROWS	1	48" x 48"	16.0	16.0
W13-4P	ON RAMP (plaque)	1	36" x 36"	9.0	9.0
W20-1	ROAD WORK AHEAD	3	48" x 48"	16.0	48.0
W20-5	LEFT or RIGHT LANE CLOSED AHEAD	2	48" x 48"	16.0	32.0
G20-2	END ROAD WORK	1	36" x 18"	4.5	4.5
CONVENTIONAL ROAD TRAFFIC CONTROL SIGNS SQFT					157.5

PRESS RELEASE ANNOUNCEMENTS

The SDDOT will prepare a press release to be released 5 days prior to any phase change or any other major change that affects traffic flow. The SDDOT will be responsible to keep law enforcement, emergency services, and the traveling public notified of changes in project access. The Contractor will provide the Engineer with pertinent information 7 days prior to any phase change or any other major change that affects traffic flow.

GENERAL PAVEMENT MARKING NOTES

Pavement markings to be replaced include edge lines, skips, lane dividing lines and turn arrows.

The solid white edge line on US 16B will not be replaced with this project.

The solid lane dividing lines at the intersection of US 16B and SD 79 will not be replaced with this project.

The solid lane dividing lines at the intersection of US 16B and 5th Street will not be replaced with this project.

Cross walk markings and stop bars will not be replaced with this project.

COLD APPLIED PLASTIC PAVEMENT MARKING

All materials will be applied as per the manufacturer's recommendations.

Cold Applied Plastic Pavement Markings will be 3M Series 380 IES.

STATE FURNISHED MATERIAL

The state will furnish 225 boxes of 4" White Cold Applied Plastic Pavement Marking, totaling 67,500 feet. The Contractor will communicate with the Project Engineer one week before pickup to schedule a time to pick up the State Furnished materials.

All costs for labor and equipment needed to install State Furnished Material will be included in the cost for "State Furnished Cold Applied Plastic Pavement Marking, 4"".

SURFACE PREPARATION FOR PAVEMENT MARKING

The Contractor will prepare the pavement surface prior to applying the cold applied plastic pavement marking in accordance with the following.

In areas where the existing groove meets the required depth and existing markings are still in place, the Contractor will clean the existing groove without adding additional depth beyond the required depth for the new pavement marking, including reflective media as noted below.

Description	Specification	Tolerance
Depth of Groove	Marking Thickness ¹ + 15 mils	+ 5 mils

¹ Marking thickness will include the thickness of marking material and reflective media.

The cleaning will result in the existing pavement marking being adequately removed by light grinding or abrasive blasting or both to allow proper adhesion of the new cold applied plastic pavement marking as per the manufacturer's recommendations to comply with product warranties.

Existing grooves not meeting the required depth will be re-grooved to the required depth for the new pavement marking, including reflective media. Equipment for grooving will be capable of the following:

- Grooving the total width of the groove in one pass or uniform depths with multiple passes.
- Grooving without causing damage to the pavement joints or joint sealant material.
- Provide uniform alignment and depth.
- Moving continuously to permit a mobile traffic work operation.

All costs associated with cleaning of the existing groove, including re-grooving, if needed, will be included in the contract unit price per foot, square foot, or each for "Surface Preparation for Pavement Marking". Surface preparation will be measured as 4" equivalent for the per foot bid item.

TABLE OF PAVEMENT MARKINGS

Location	Cold Applied Plastic Pavement Marking, Arrow (each)	Cold Applied Plastic Pavement Marking, 4" White (ft)	Cold Applied Plastic Pavement Marking, 4" Yellow (ft)	Cold Applied Plastic Pavement Marking, 8" White (ft)	Cold Applied Plastic Pavement Marking, 12" White (ft)	Cold Applied Plastic Pavement Marking, 24" White (ft)	Cold Applied Plastic Pavement Marking, 24" Yellow (ft)	Cold Applied Plastic Pavement Marking, Railroad Crossing (each)	Cold Applied Plastic Pavement Marking, Word (each)	Cold Applied Plastic Pavement Marking, Area Yellow (SqFt)	Surface Preparation for Pavement Marking (each) Arrows	Surface Preparation for Pavement Marking (each) Railroad Crossing	Surface Preparation for Pavement Marking (each) Word	Surface Preparation for Pavement Marking (4" equivalent)	Surface Preparation for Pavement Marking (SqFt)
Hwy 44 (Omaha St) EB - I190 to Mt Rushmore Rd	9	1760									9			1760	
Hwy 44 (Omaha St) WB - Mt Rushmore Rd to I190	11	1720									11			1720	
Hwy 44 (Omaha St) EB - Mt Rushmore Rd to 5th St	8	1900									8			1900	
Hwy 44 (Omaha St) WB - 5th St to Mt Rushmore Rd	6	1920									6			1920	
Hwy 44 (Omaha St) EB - 5th St to East Blvd	14	2430	1180	364			90	6	1		14	6	1	4878	
Hwy 44 (Omaha St) WB - East Blvd to 5th St	9	2970		360				8			9	8		3690	
Hwy 44 (Omaha St) EB - East Blvd to LaCrosse St	11	1110	3690								11			4800	
Hwy 44 (Omaha St) WB - LaCrosse St to East Blvd	11	1170	4040	280		60	110				11			6790	
Hwy 44 (Omaha St) EB - LaCrosse St to Cambell St	6	1670	2405								6			4075	
Hwy 44 (Omaha St) WB - Cambell St to LaCrosse St	6	1230	3430								6			4660	
Hwy 44 (Omaha St) EB - Cambell St to St Patrick St	21	9260	9810	1410		190	175		1	29	21		1	24080	29
Hwy 44 (Omaha St) WB - St Patrick St to Cambell St	24	3330	8280			40					24			11850	
Hwy 44 (Omaha St) EB - St Patrick St to Jolly Ln	29	8280	5740	650		120	70				29			16460	
Hwy 44 (Omaha St) WB - Jolly Ln to St Patrick St	19	2075	5060	1170		210	35				19			10945	
016B - EB Homestead St to Interstate 90	17	4435									17			4435	
016B - WB Interstate 90 to Homestead St	17	4030									17			4030	
016B - EB Minnesota St to Homestead St	15	5565				920					15			8325	
016B - WB Homestead ST to Minnesota St	21	6745				700					21			8845	
016B - EB Hwy 79 to Minnesota St	11	2690									11			2690	
016B - WB Minnesota St to Hwy 79	5	1820									5			1820	
016B - EB 5th St to Hwy 79	7	2430									7			2430	
016B - WB Hwy 79 to 5th St	7	2250									7			2250	
Totals:	284	70,790	43,635	4,234	1,620	620	480	14	2	29	284	14	2	134,353	29
		114,425				1100									

PAVEMENT MARKING LAYOUT

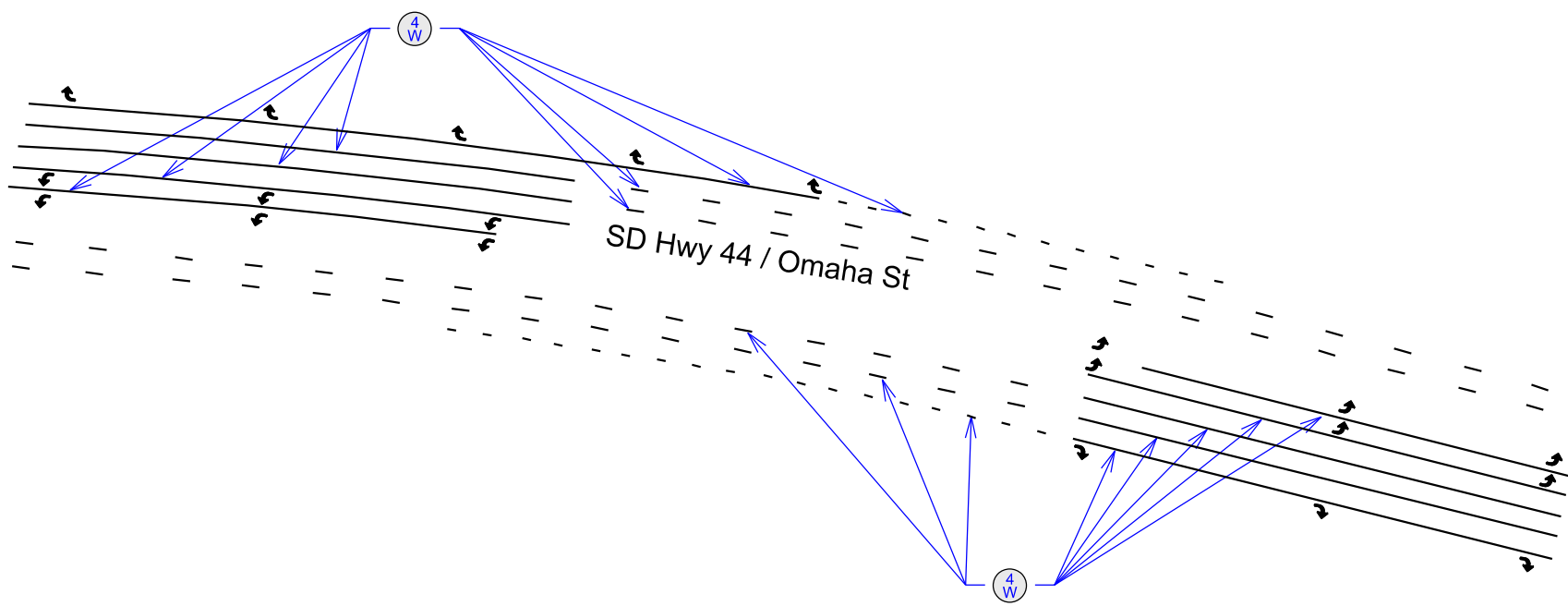


PROJECT	SECTION	SHEET
PH 0040(325)	Non	5/20

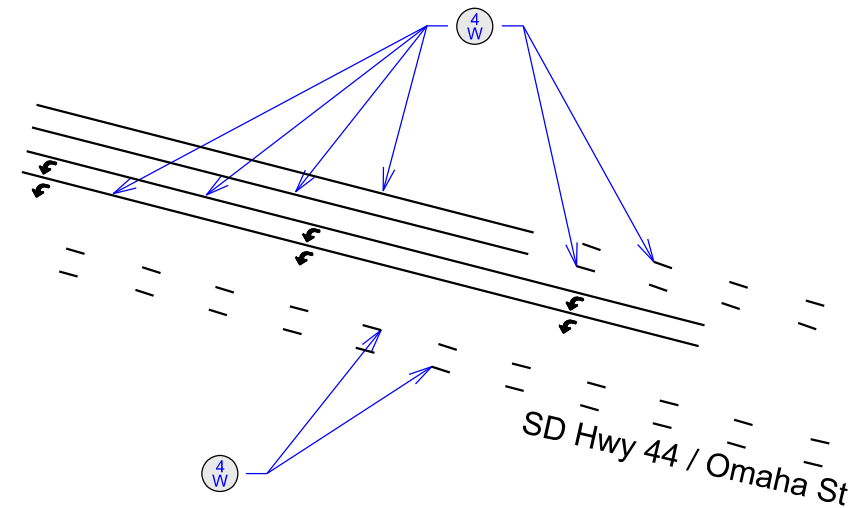
Plotting Date: 05/03/2024

SECTION	SHEET
Non	5/20

Interstate 190

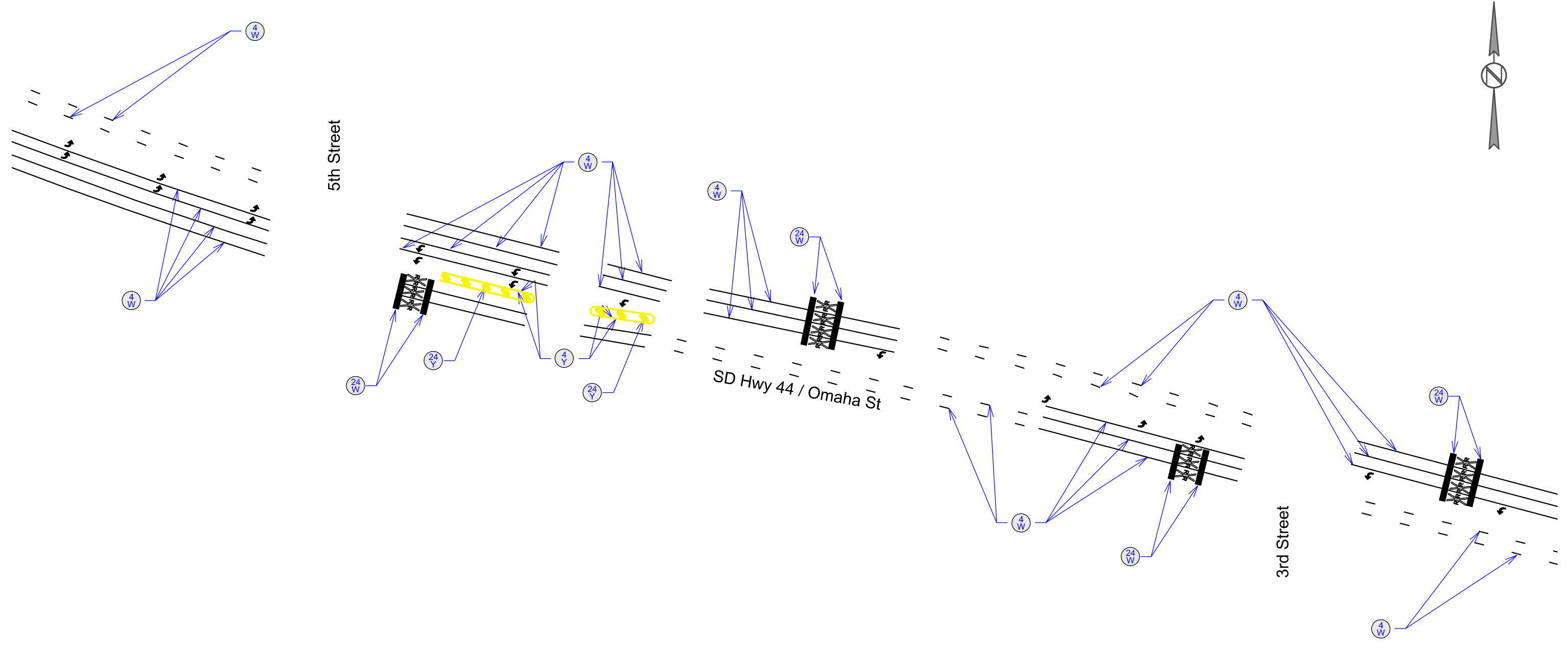


Mount Rushmore Rd



PAVEMENT MARKING LAYOUT

SD DOT	PROJECT	SECTION	SHEET
	PH 0040(325)	Non	6/20
Plotting Date: 05/03/2024			



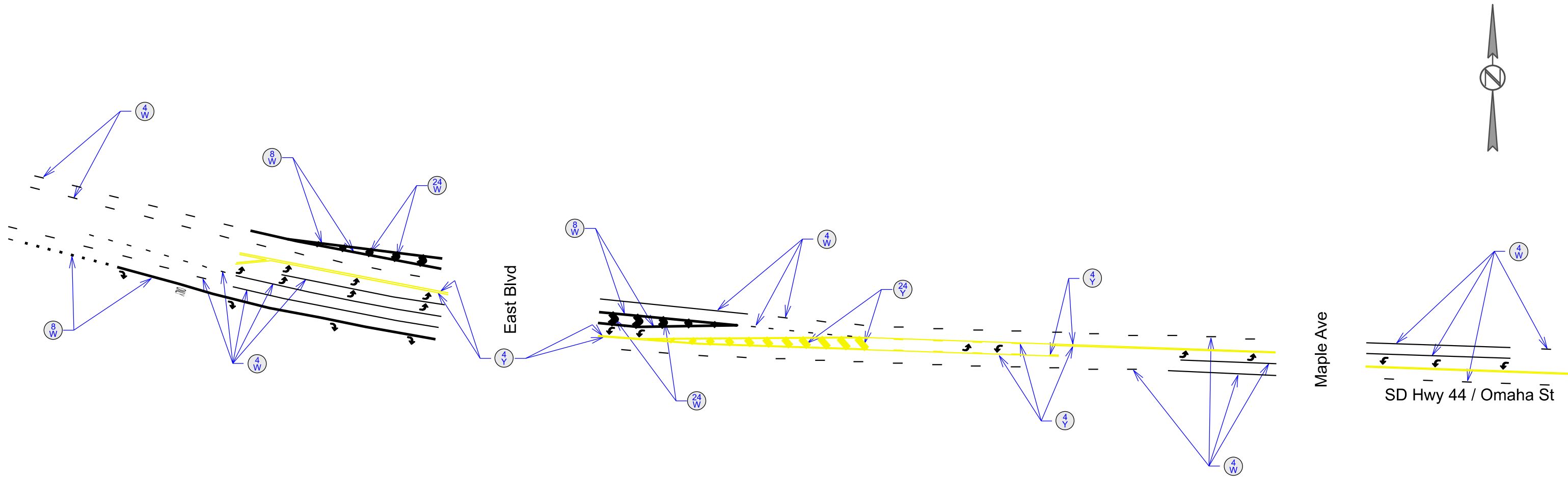
PAVEMENT MARKING LAYOUT



PROJECT
PH 0040(325)

SECTION SHEET
Non 7/20

Plotting Date: 05/03/2024



PAVEMENT MARKING LAYOUT

* Thermoplastic Arrows
Installed Previously

DO NOT INSTALL NEW

* Stop bar and crosswalk shown for
informational purposes only.

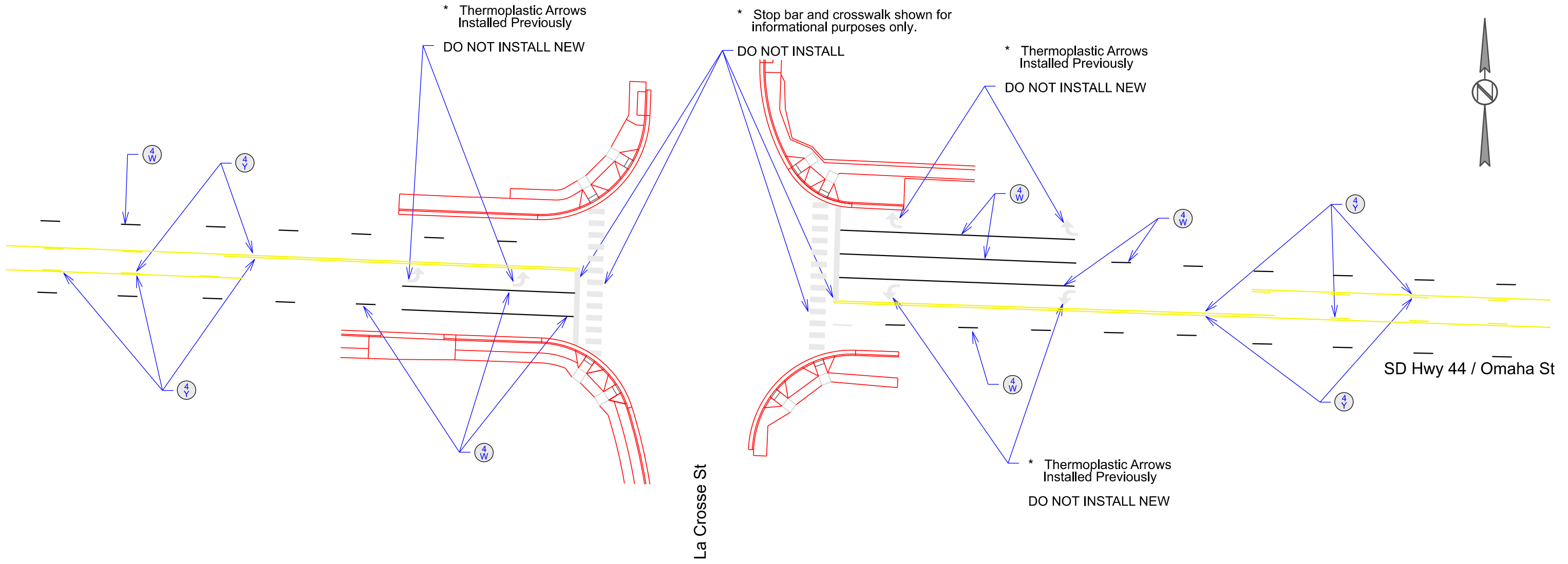
DO NOT INSTALL








* Thermoplastic Arrows
Installed Previously

DO NOT INSTALL NEW

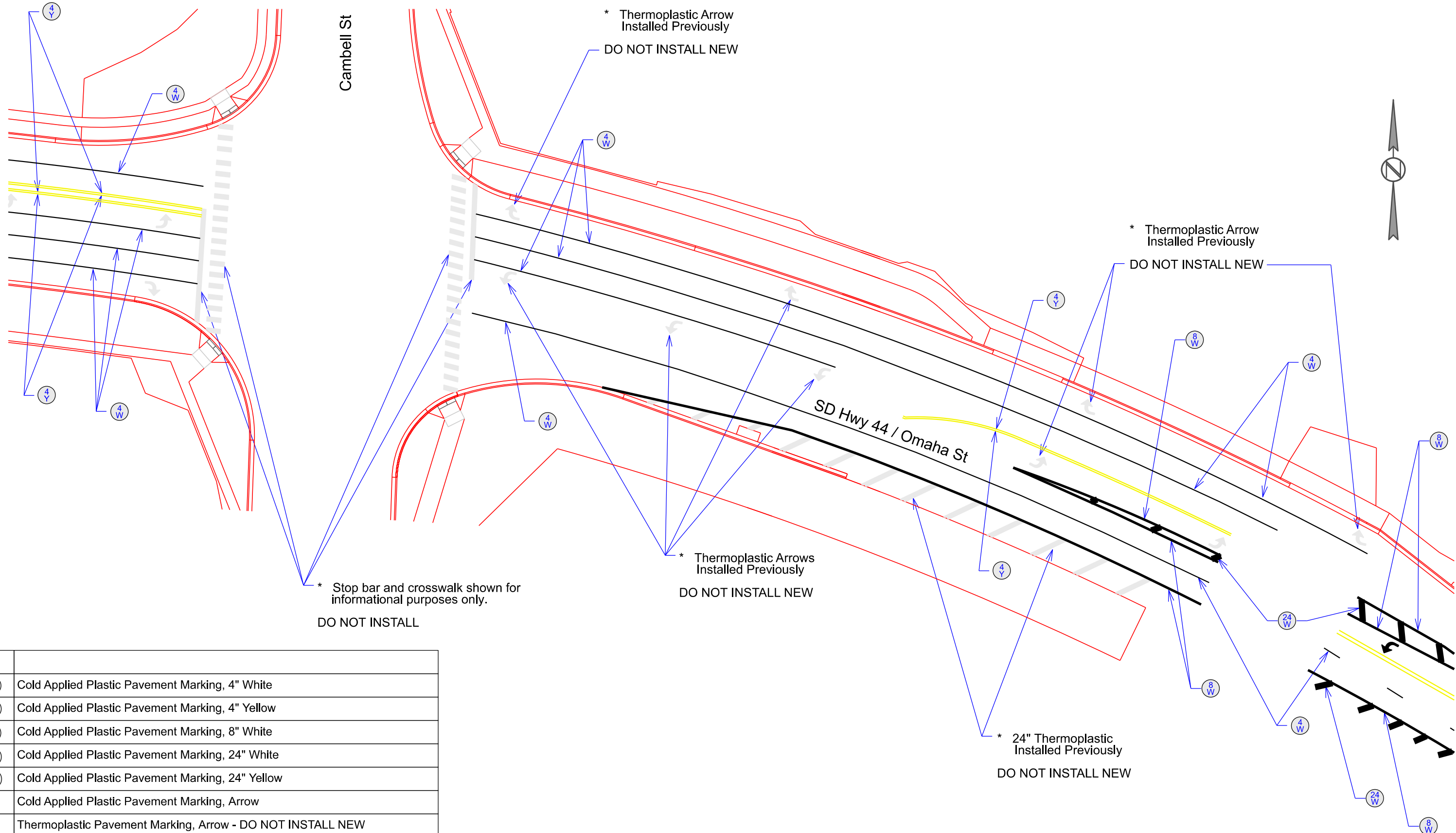
* Thermoplastic Arrows
Installed Previously

DO NOT INSTALL NEW



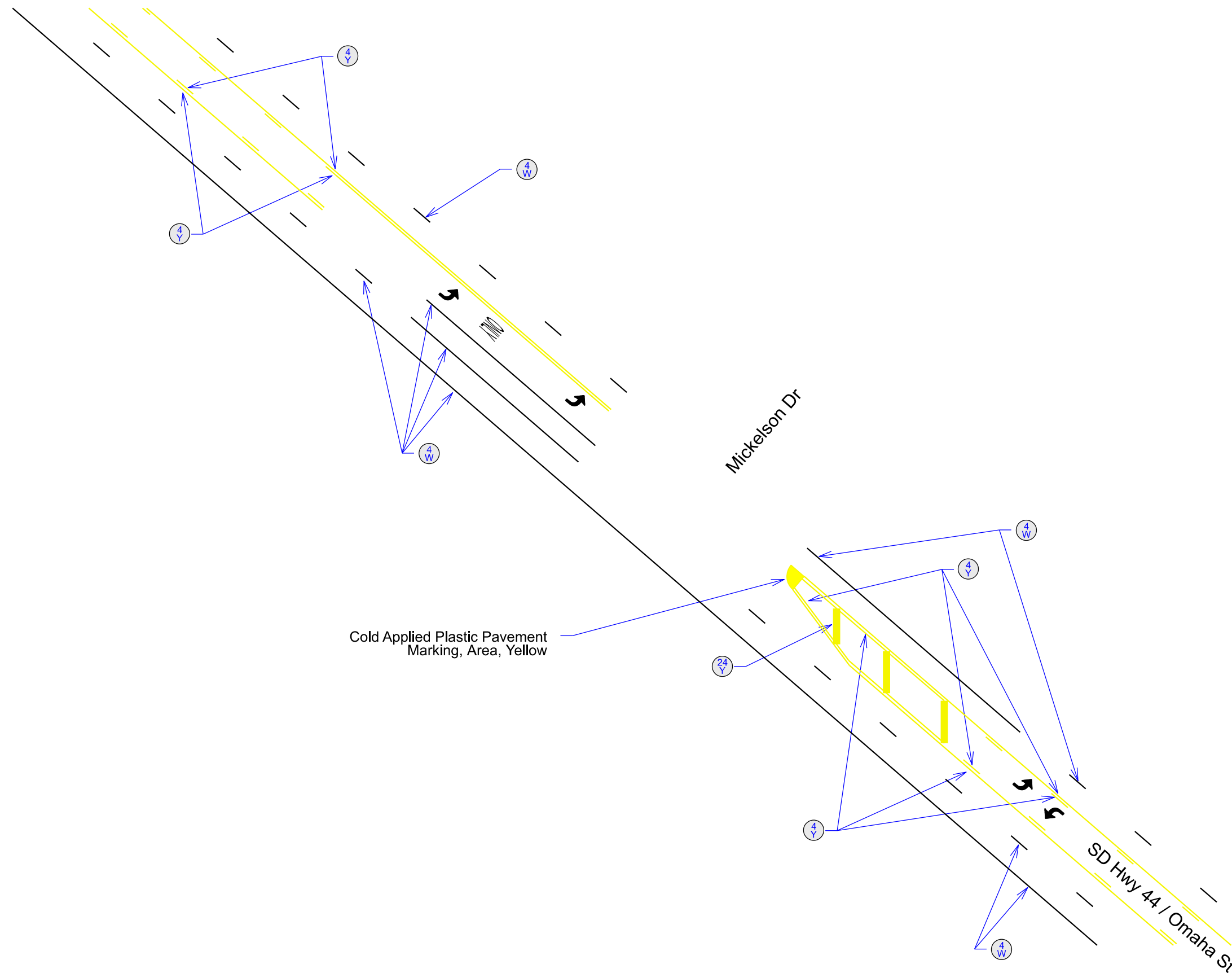
	Cold Applied Plastic Pavement Marking, 4" White
	Cold Applied Plastic Pavement Marking, 4" Yellow
	Cold Applied Plastic Pavement Marking, 8" White
	Cold Applied Plastic Pavement Marking, 24" White
	Cold Applied Plastic Pavement Marking, 24" Yellow
	Cold Applied Plastic Pavement Marking, Arrow
	Thermoplastic Pavement Marking, Arrow - DO NOT INSTALL NEW

PAVEMENT MARKING LAYOUT

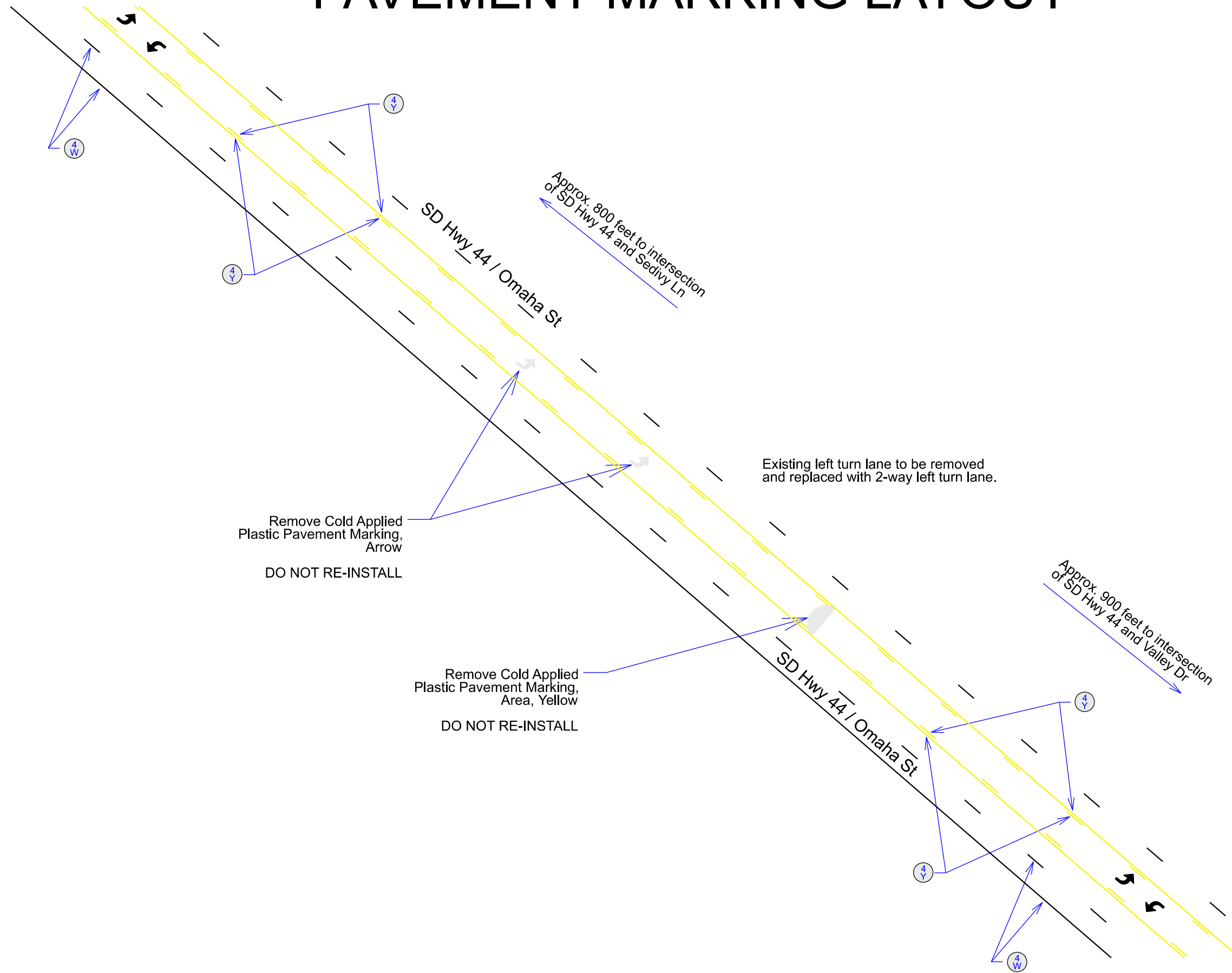


4W	Cold Applied Plastic Pavement Marking, 4" White
4Y	Cold Applied Plastic Pavement Marking, 4" Yellow
8W	Cold Applied Plastic Pavement Marking, 8" White
24W	Cold Applied Plastic Pavement Marking, 24" White
24Y	Cold Applied Plastic Pavement Marking, 24" Yellow
↩	Cold Applied Plastic Pavement Marking, Arrow
↩	Thermoplastic Pavement Marking, Arrow - DO NOT INSTALL NEW

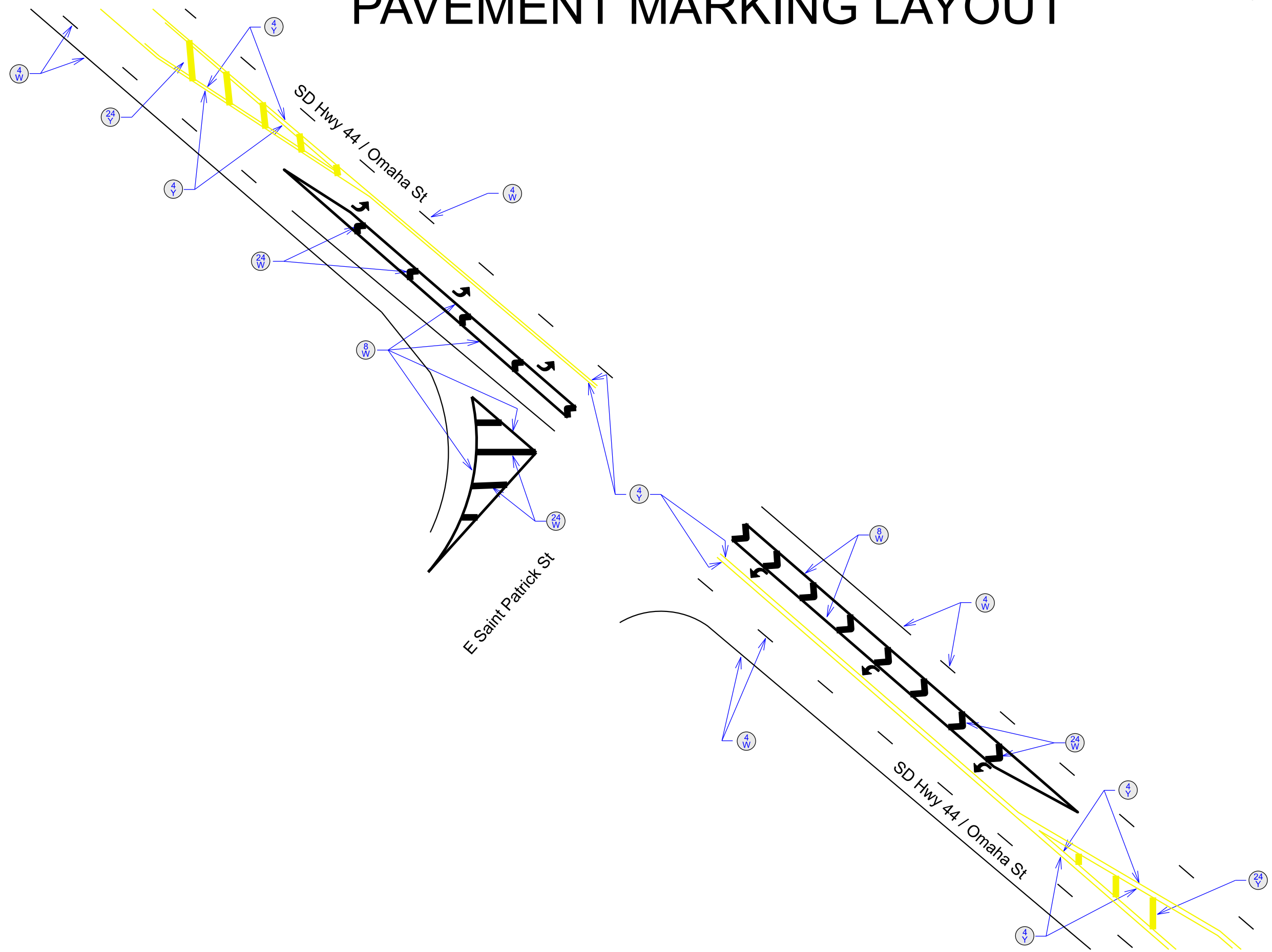
PAVEMENT MARKING LAYOUT



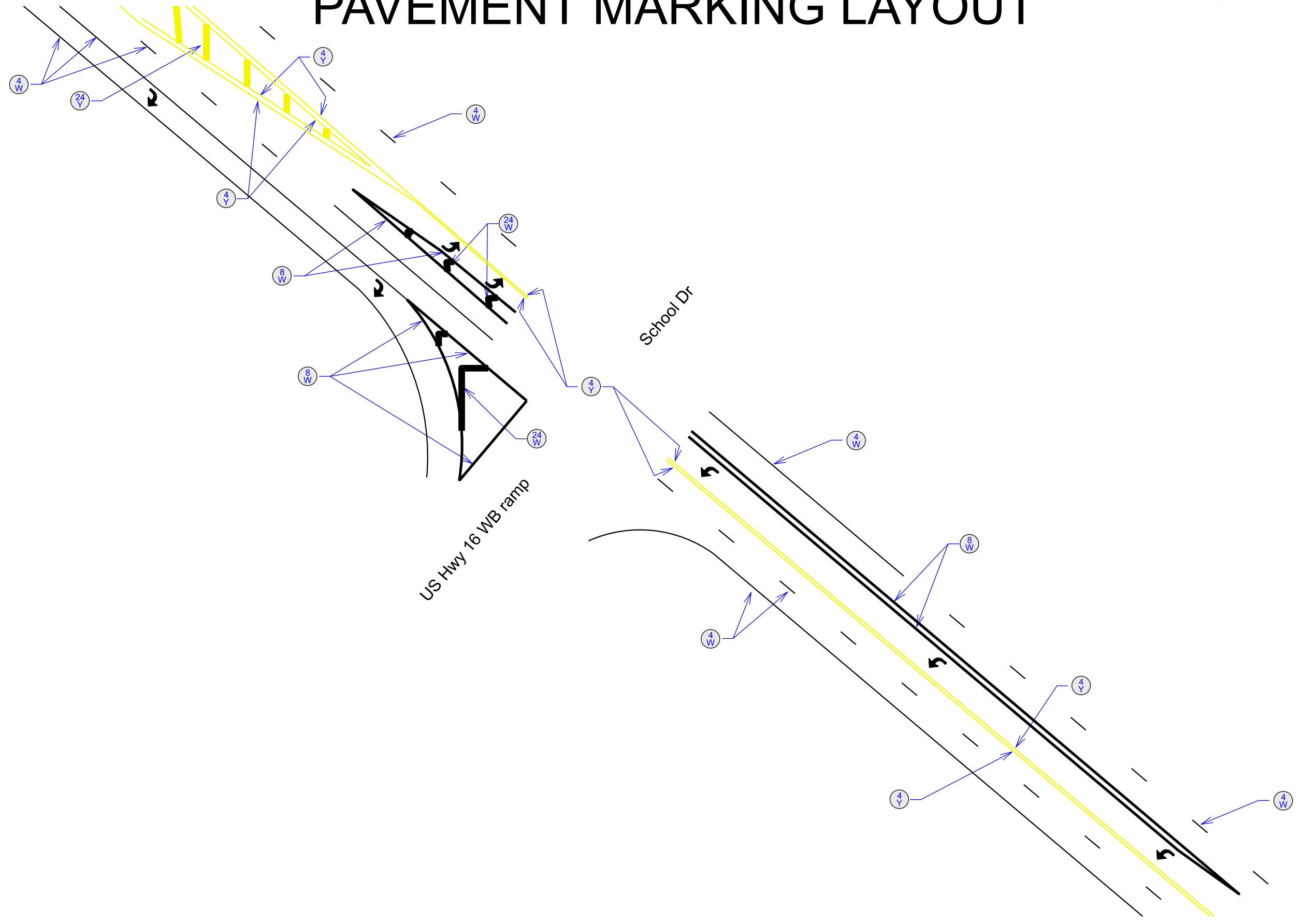
PAVEMENT MARKING LAYOUT



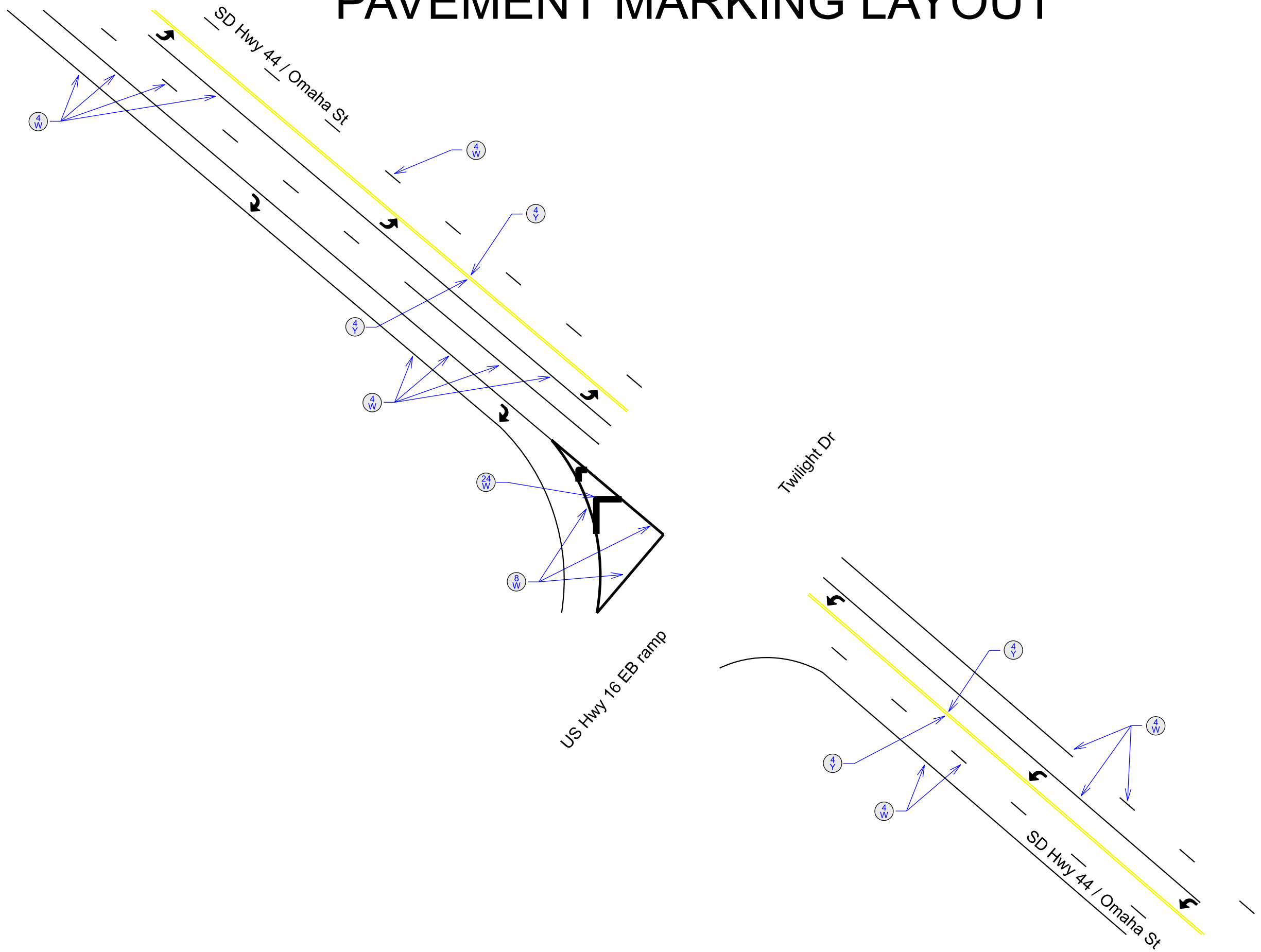
PAVEMENT MARKING LAYOUT

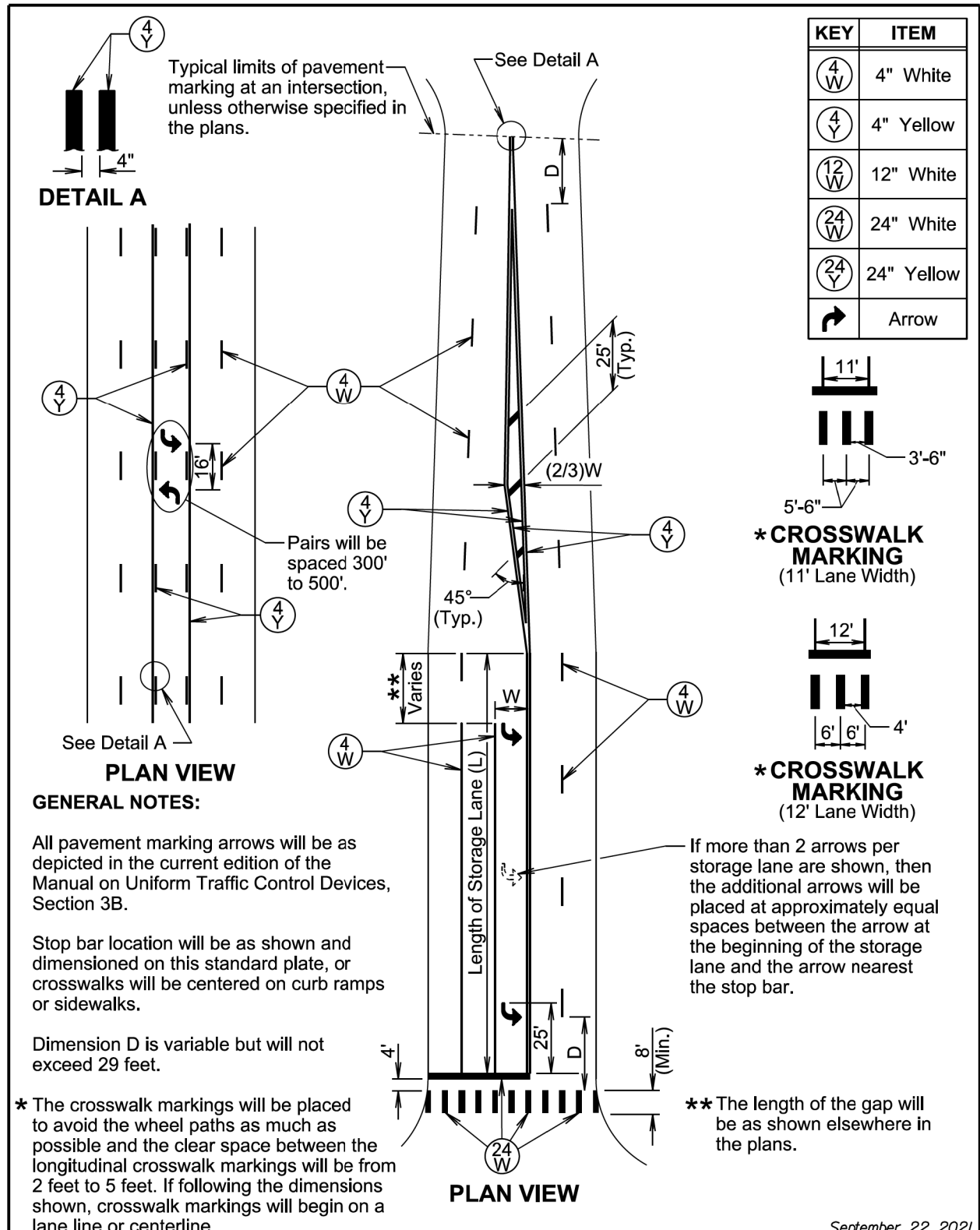


PAVEMENT MARKING LAYOUT



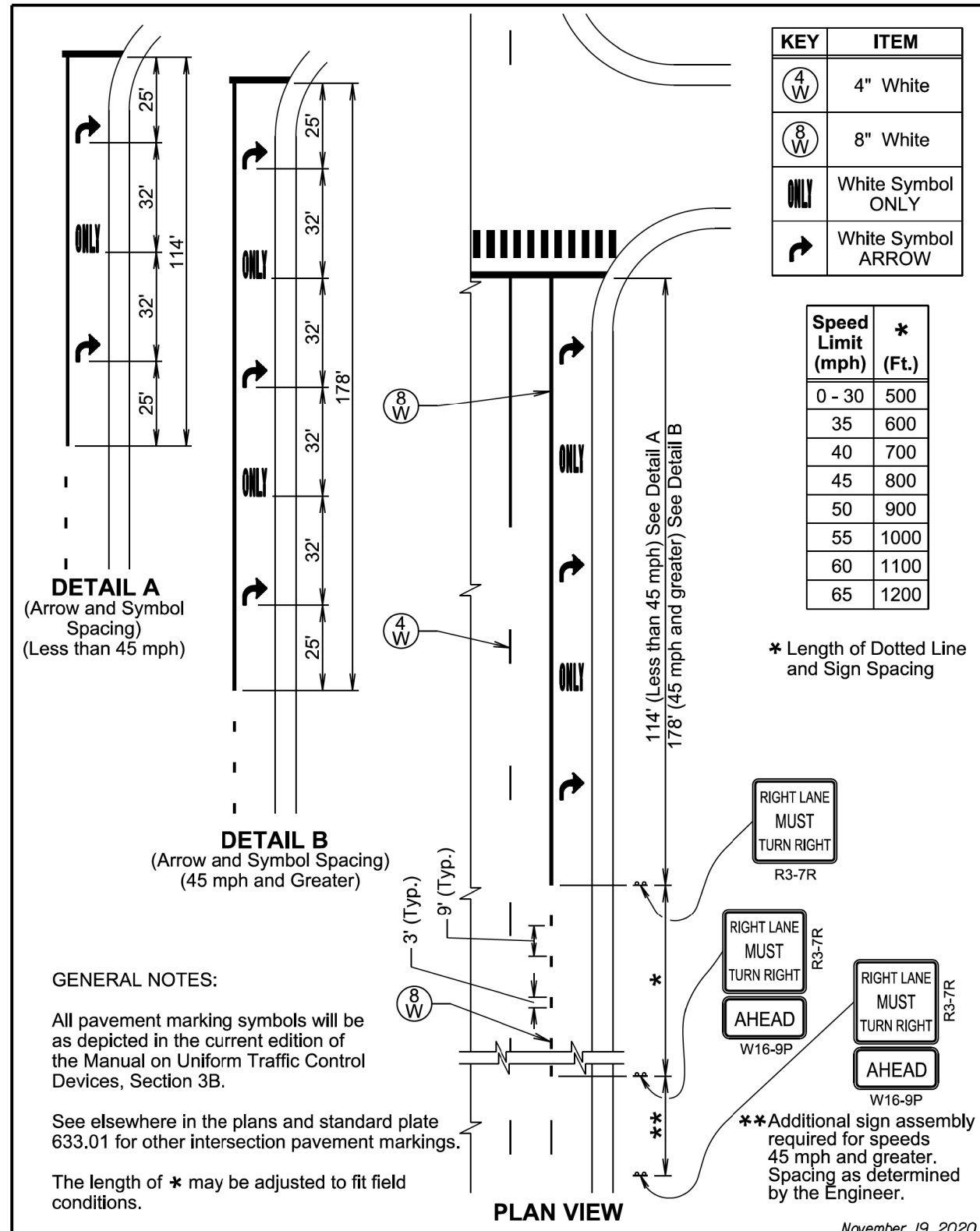
PAVEMENT MARKING LAYOUT





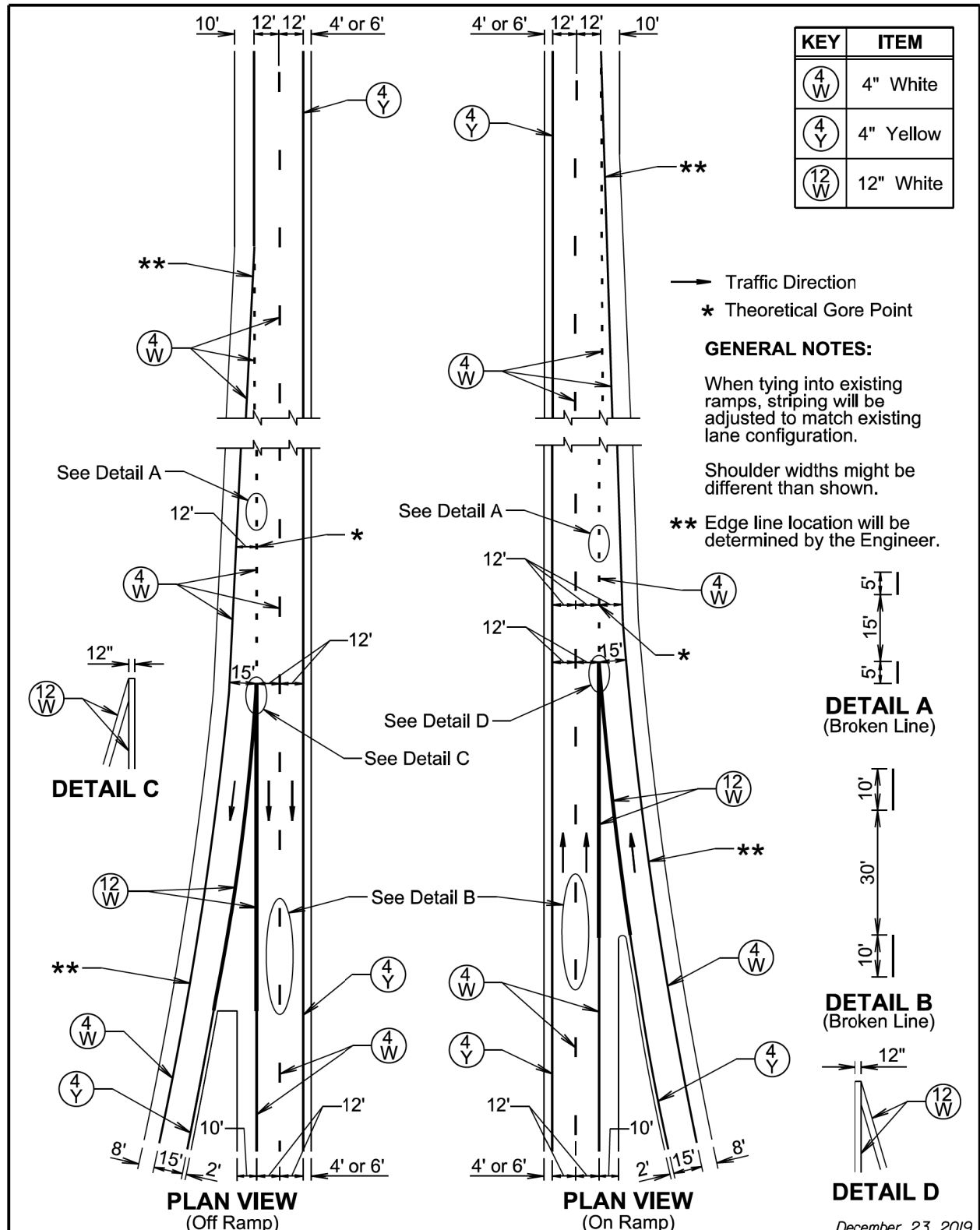
SD DOT	PAVEMENT MARKINGS FOR ADJACENT INTERSECTIONS AND CENTER TURN LANE	PLATE NUMBER 633.01
		Sheet 1 of 1

Published Date: 2024



SD DOT	LANE-DROP PAVEMENT MARKINGS	PLATE NUMBER 633.02
		Sheet 1 of 1

Published Date: 2024



KEY	ITEM
(4 W)	4" White
(4 Y)	4" Yellow
(12 W)	12" White

→ Traffic Direction
 * Theoretical Gore Point

GENERAL NOTES:
 When tying into existing ramps, striping will be adjusted to match existing lane configuration.
 Shoulder widths might be different than shown.
 ** Edge line location will be determined by the Engineer.

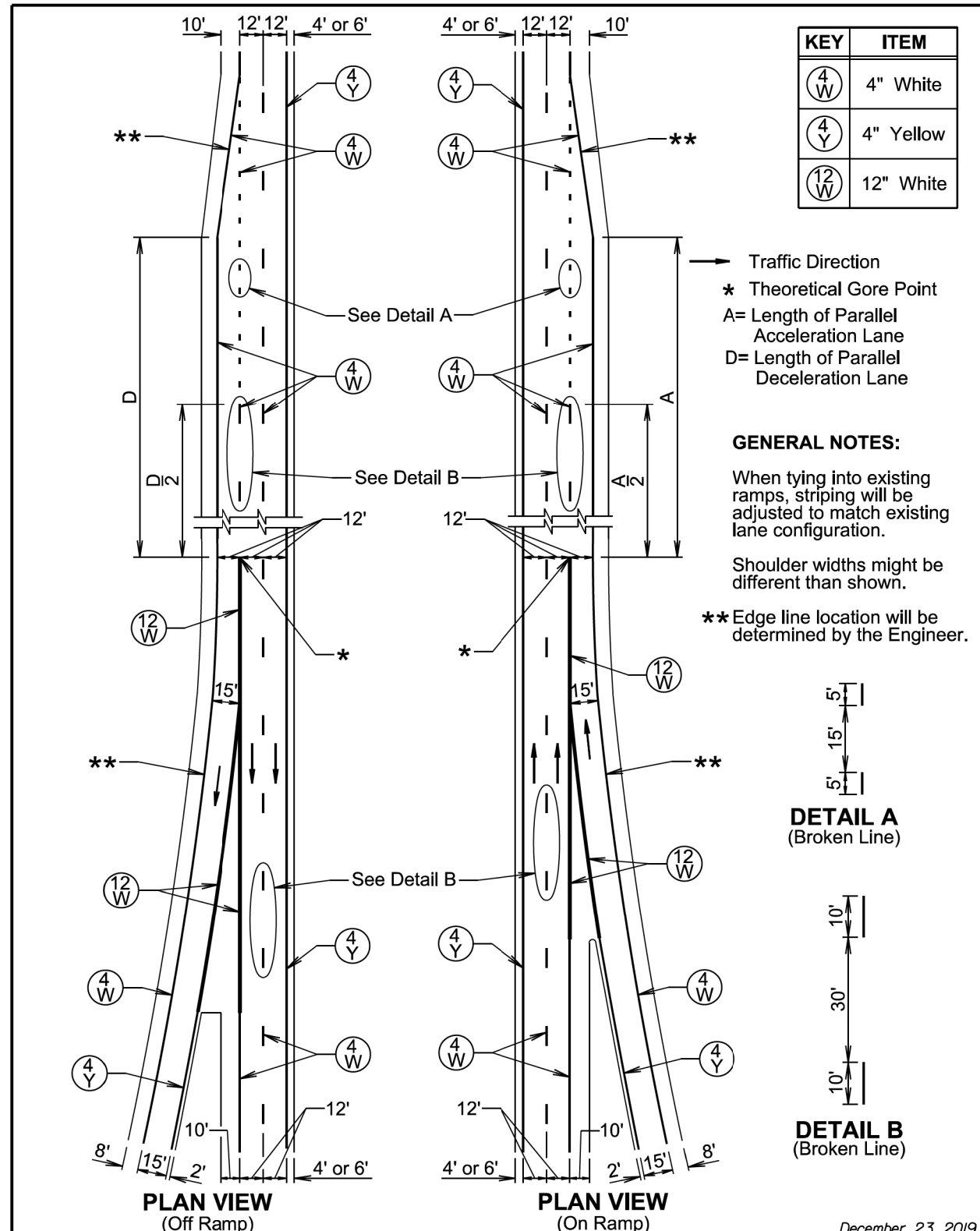
DETAIL A
(Broken Line)

DETAIL B
(Broken Line)

DETAIL D

December 23, 2019

Published Date: 2024	SD DOT	PAVEMENT MARKING LAYOUT FOR TAPERED INTERSTATE RAMPS	PLATE NUMBER 633.05
			Sheet 1 of 1



KEY	ITEM
(4 W)	4" White
(4 Y)	4" Yellow
(12 W)	12" White

→ Traffic Direction
 * Theoretical Gore Point
 A= Length of Parallel Acceleration Lane
 D= Length of Parallel Deceleration Lane

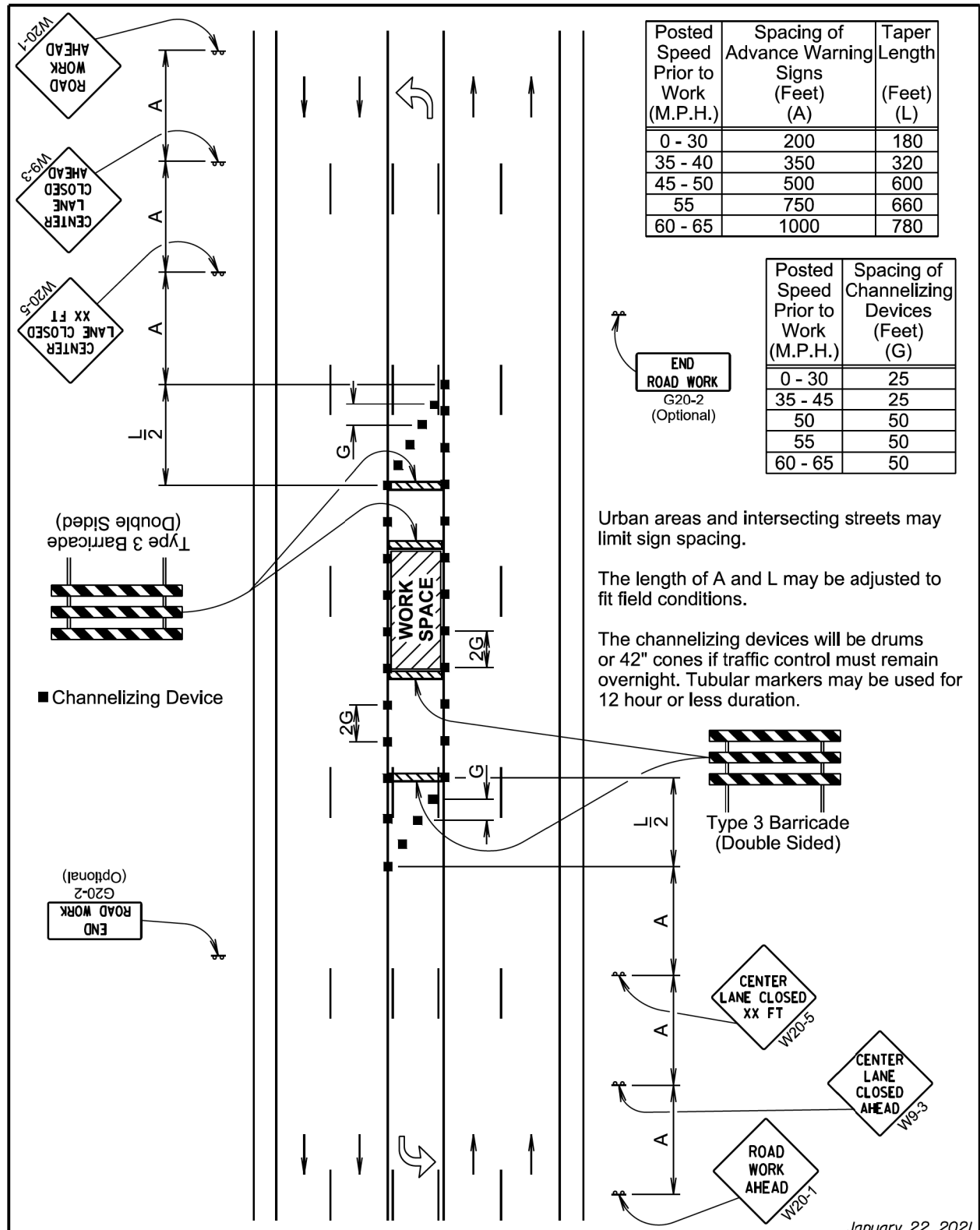
GENERAL NOTES:
 When tying into existing ramps, striping will be adjusted to match existing lane configuration.
 Shoulder widths might be different than shown.
 ** Edge line location will be determined by the Engineer.

DETAIL A
(Broken Line)

DETAIL B
(Broken Line)

December 23, 2019

Published Date: 2024	SD DOT	PAVEMENT MARKING LAYOUT FOR PARALLEL INTERSTATE RAMPS	PLATE NUMBER 633.06
			Sheet 1 of 1



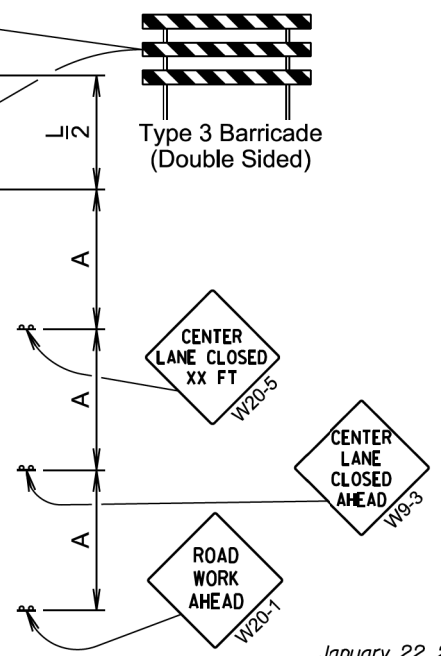
Posted Speed Prior to Work (M.P.H.)	Spacing of Advance Warning Signs (Feet) (A)	Taper Length (Feet) (L)
0 - 30	200	180
35 - 40	350	320
45 - 50	500	600
55	750	660
60 - 65	1000	780

Posted Speed Prior to Work (M.P.H.)	Spacing of Channelizing Devices (Feet) (G)
0 - 30	25
35 - 45	25
50	50
55	50
60 - 65	50

Urban areas and intersecting streets may limit sign spacing.

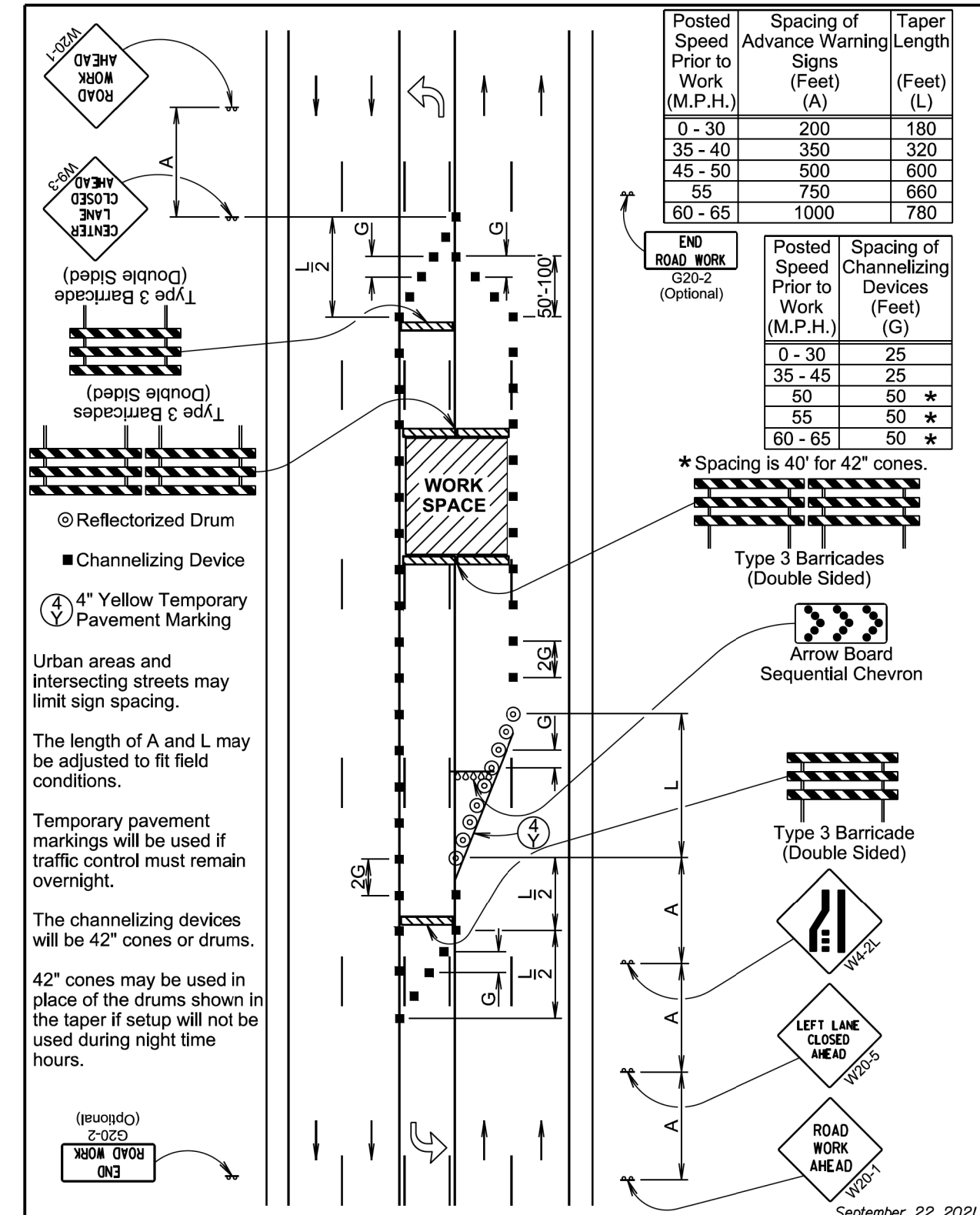
The length of A and L may be adjusted to fit field conditions.

The channelizing devices will be drums or 42" cones if traffic control must remain overnight. Tubular markers may be used for 12 hour or less duration.



January 22, 2021

	5-LANE, CENTER LANE CLOSED	PLATE NUMBER 634.55
		Sheet 1 of 1
Published Date: 2024		



Posted Speed Prior to Work (M.P.H.)	Spacing of Advance Warning Signs (Feet) (A)	Taper Length (Feet) (L)
0 - 30	200	180
35 - 40	350	320
45 - 50	500	600
55	750	660
60 - 65	1000	780

Posted Speed Prior to Work (M.P.H.)	Spacing of Channelizing Devices (Feet) (G)
0 - 30	25
35 - 45	25
50	50 *
55	50 *
60 - 65	50 *

* Spacing is 40' for 42" cones.

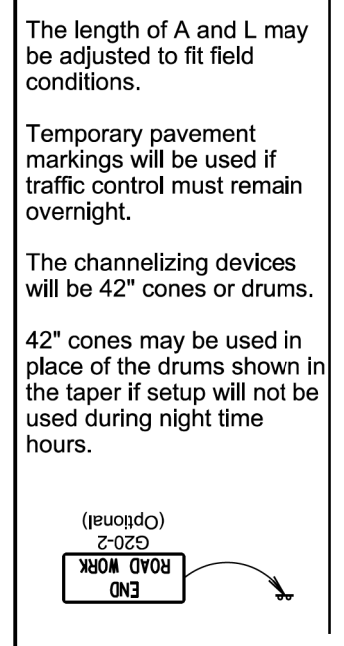
Urban areas and intersecting streets may limit sign spacing.

The length of A and L may be adjusted to fit field conditions.

Temporary pavement markings will be used if traffic control must remain overnight.

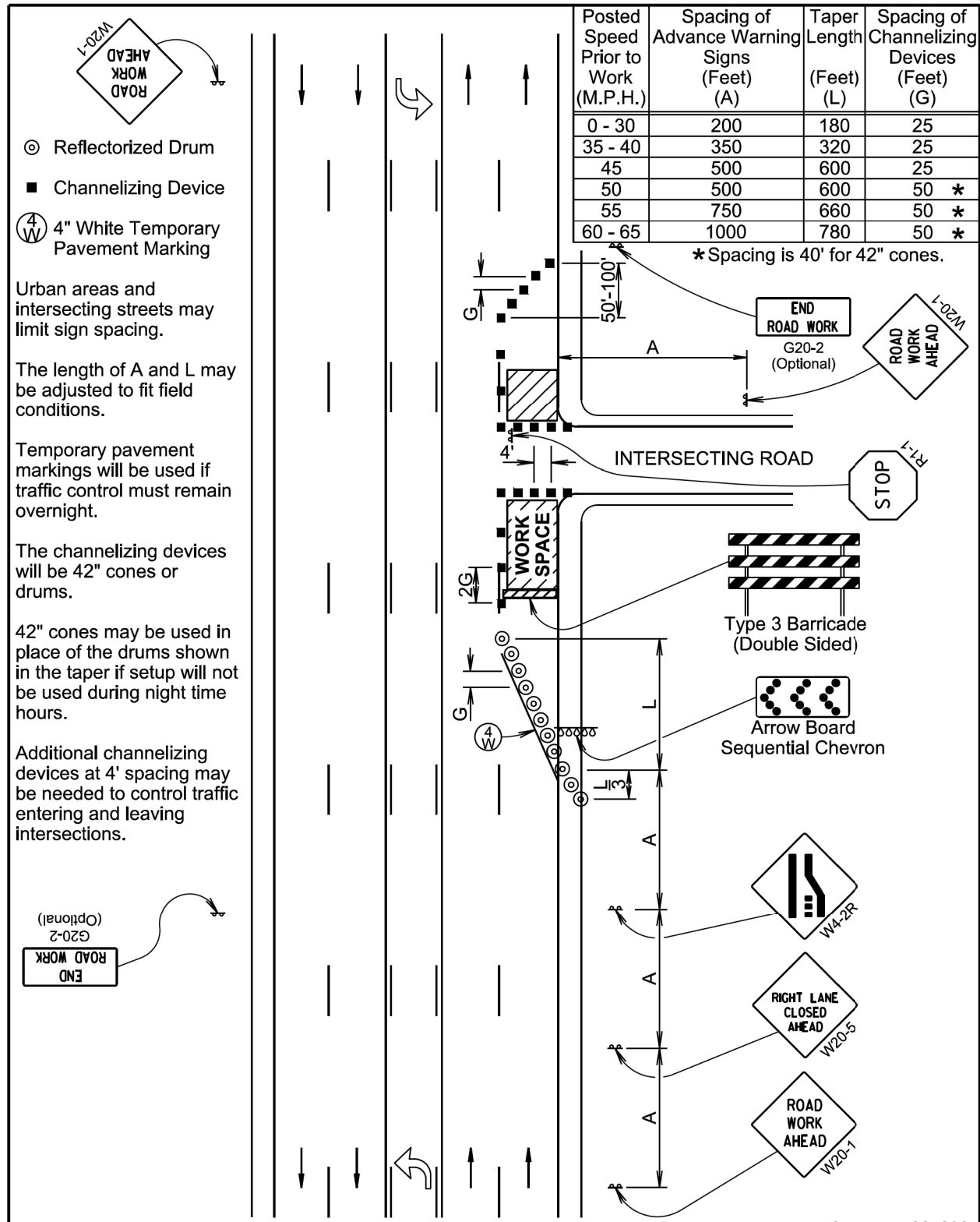
The channelizing devices will be 42" cones or drums.

42" cones may be used in place of the drums shown in the taper if setup will not be used during night time hours.



September 22, 2021

	5-LANE, INSIDE 2 LANES CLOSED	PLATE NUMBER 634.56
		Sheet 1 of 1
Published Date: 2024		



September 22, 2021

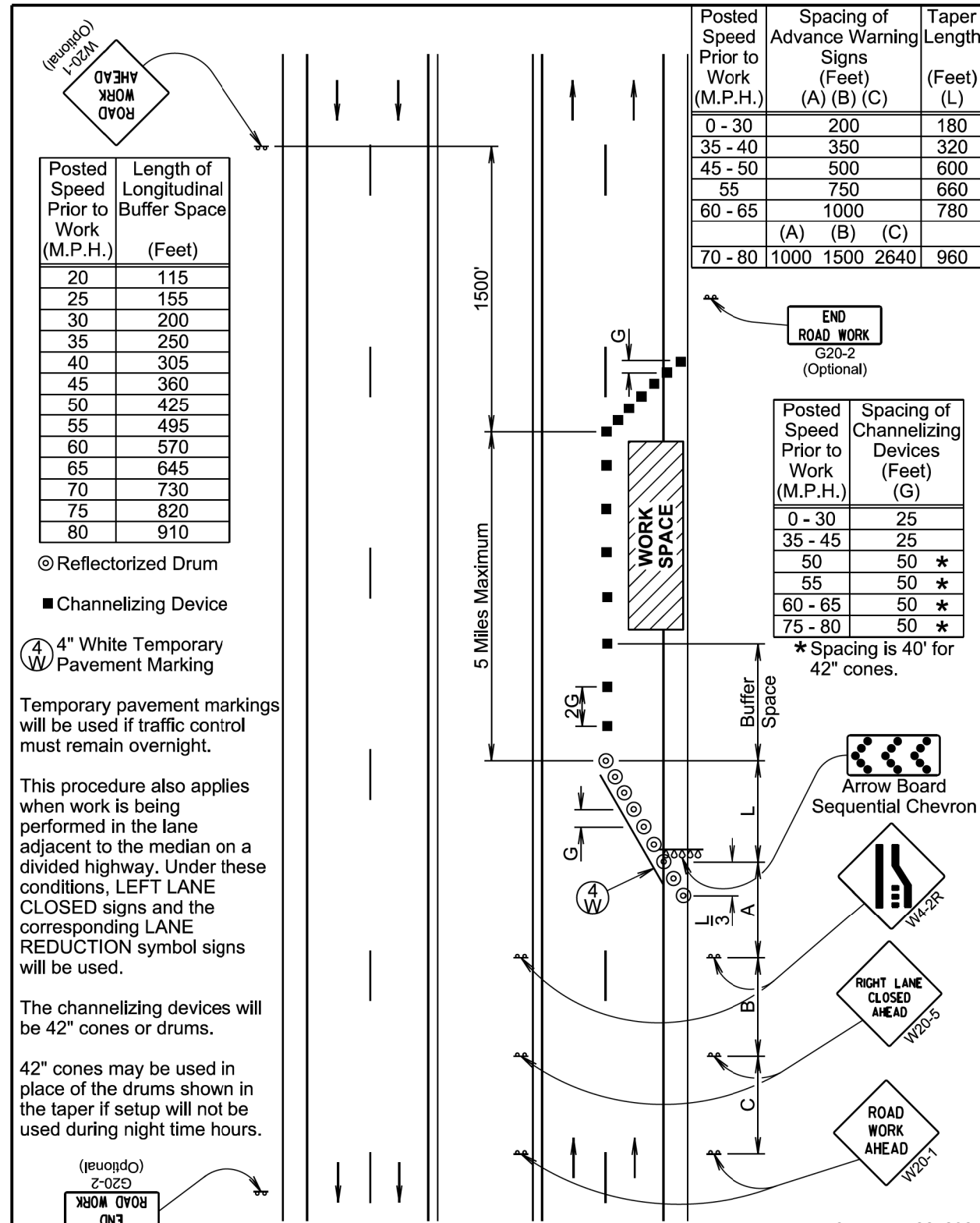
SDDOT

5-LANE, OUTSIDE LANE CLOSED

PLATE NUMBER: 634.60

Published Date: 2024

Sheet 1 of 1



September 22, 2021

SDDOT

LANE CLOSURE WITHOUT BARRIER

PLATE NUMBER: 634.64

Published Date: 2024

Sheet 1 of 1

Posted Speed Prior to Work (M.P.H.)	Spacing of Advance Warning Signs (Feet)		Taper Length (Feet) (L)
	(A)	(B)	
45 - 50	500		600
55	750		660
60 - 65	1000		780
	(A)	(B)	
70 - 80	1000	1500	1125

Posted Speed Prior to Work (M.P.H.)	Spacing of Channelizing Devices (Feet) (G)
0 - 30	25
35 - 45	25
50	50 *
55	50 *
60 - 80	50 *

* Spacing is 40' for 42" cones.

■ Channelizing Device

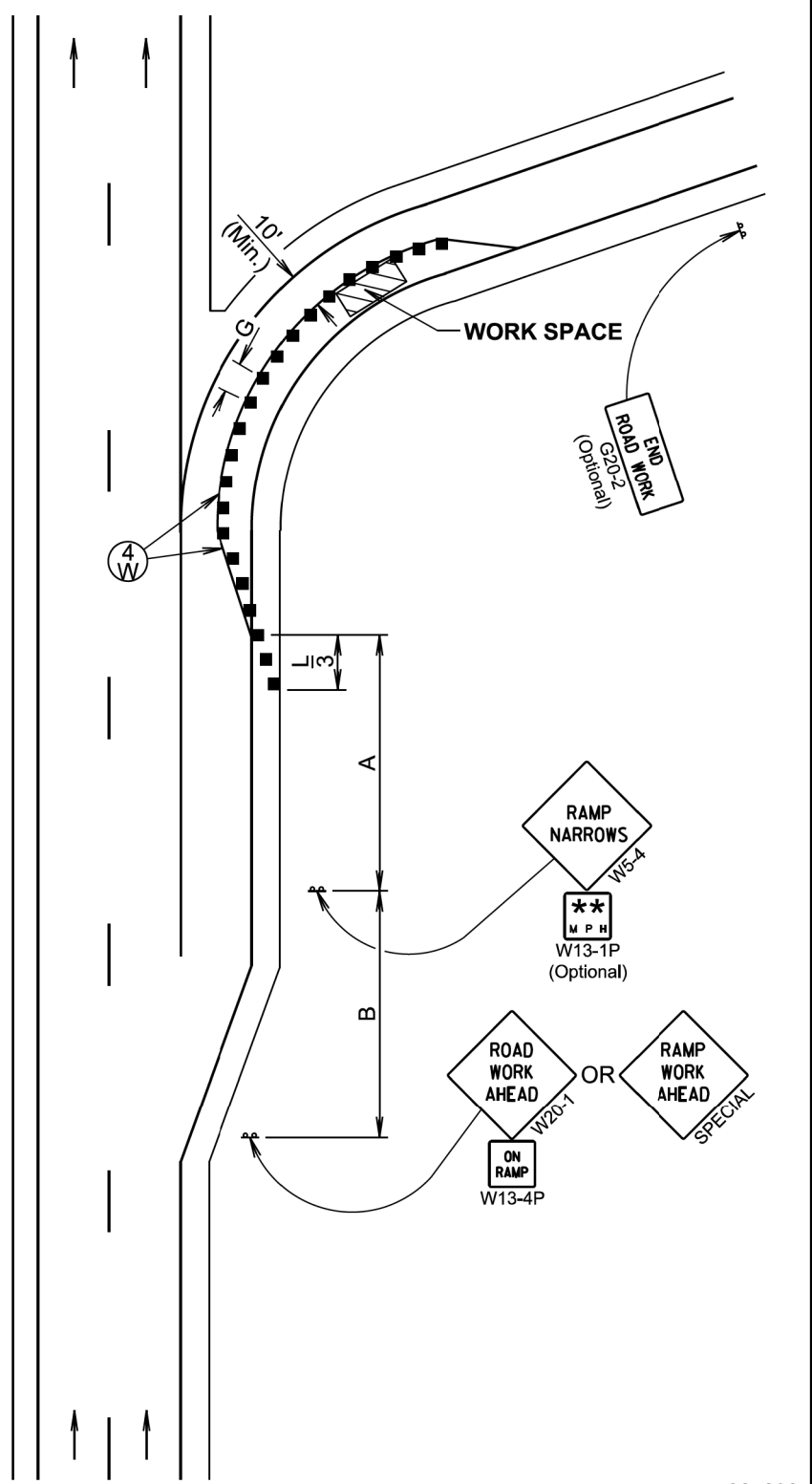
Ⓞ 4" White Temporary Pavement Marking

** Need and safe speed to be determined by the Engineer.

Temporary pavement markings will be used if traffic control must remain overnight.

The channelizing devices will be drums or 42" cones if traffic control must remain overnight.

Truck off-tracking should be considered when determining whether the 10-foot minimum lane width is adequate.



January 22, 2021

SD DOT	PARTIAL EXIT RAMP CLOSURE	PLATE NUMBER 634.69
		Sheet 1 of 1
Published Date: 2024		

Posted Speed Prior to Work (M.P.H.)	Spacing of Advance Warning Signs (Feet)			Taper Length (Feet) (L)
	(A)	(B)	(C)	
0 - 30	200			180
35 - 40	350			320
45 - 50	500			600
55	750			660
60 - 65	1000			780
	(A)	(B)	(C)	
70 - 80	1000	1500	2640	1125

Posted Speed Prior to Work (M.P.H.)	Spacing of Channelizing Devices (Feet) (G)
0 - 30	25
35 - 45	25
50	50 *
55	50 *
60 - 80	50 *

* Spacing is 40' for 42" cones.

Ⓞ Reflectorized Drum

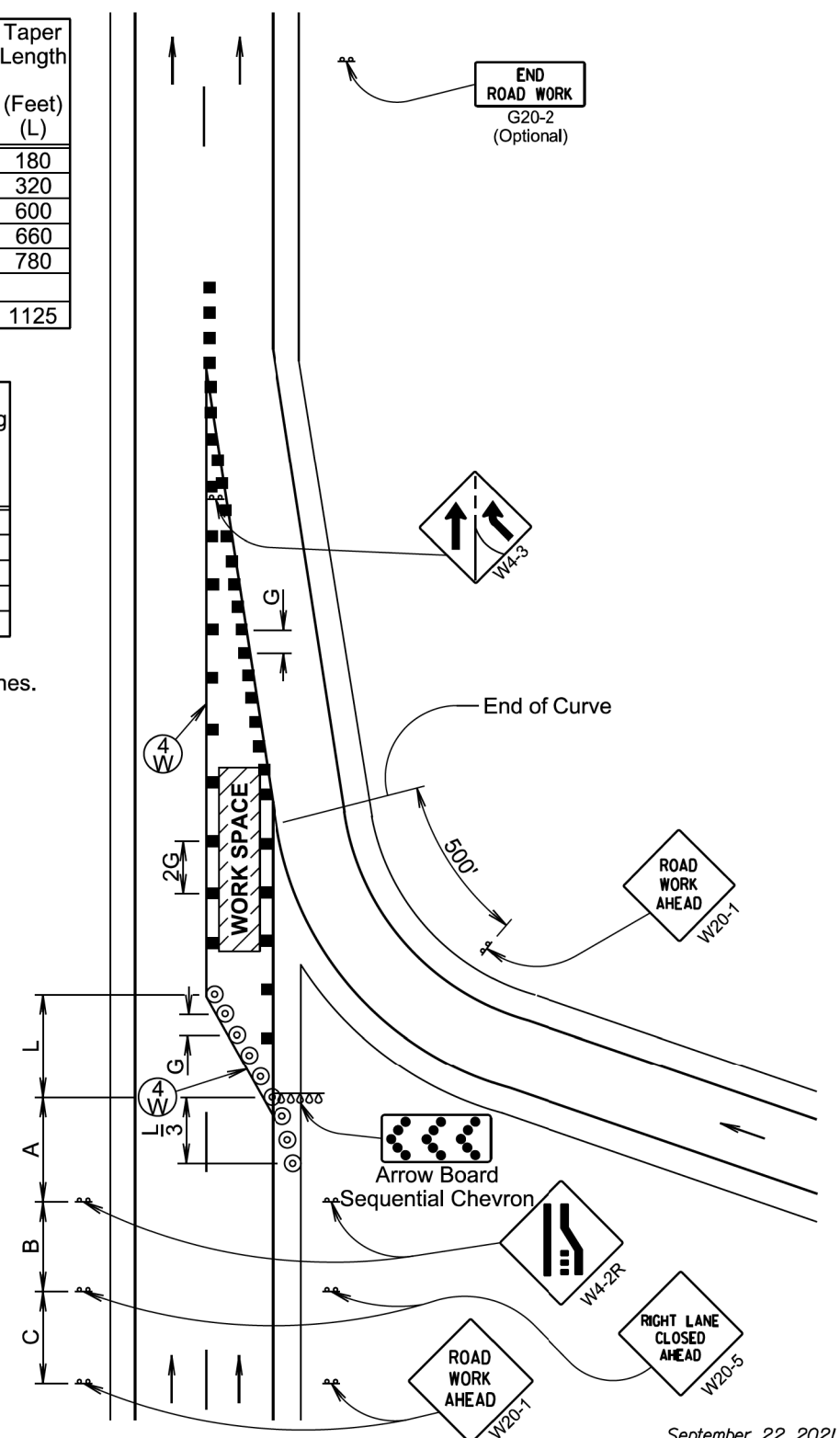
■ Channelizing Device

Ⓞ 4" White Temporary Pavement Marking

Temporary pavement markings will be used if traffic control must remain overnight.

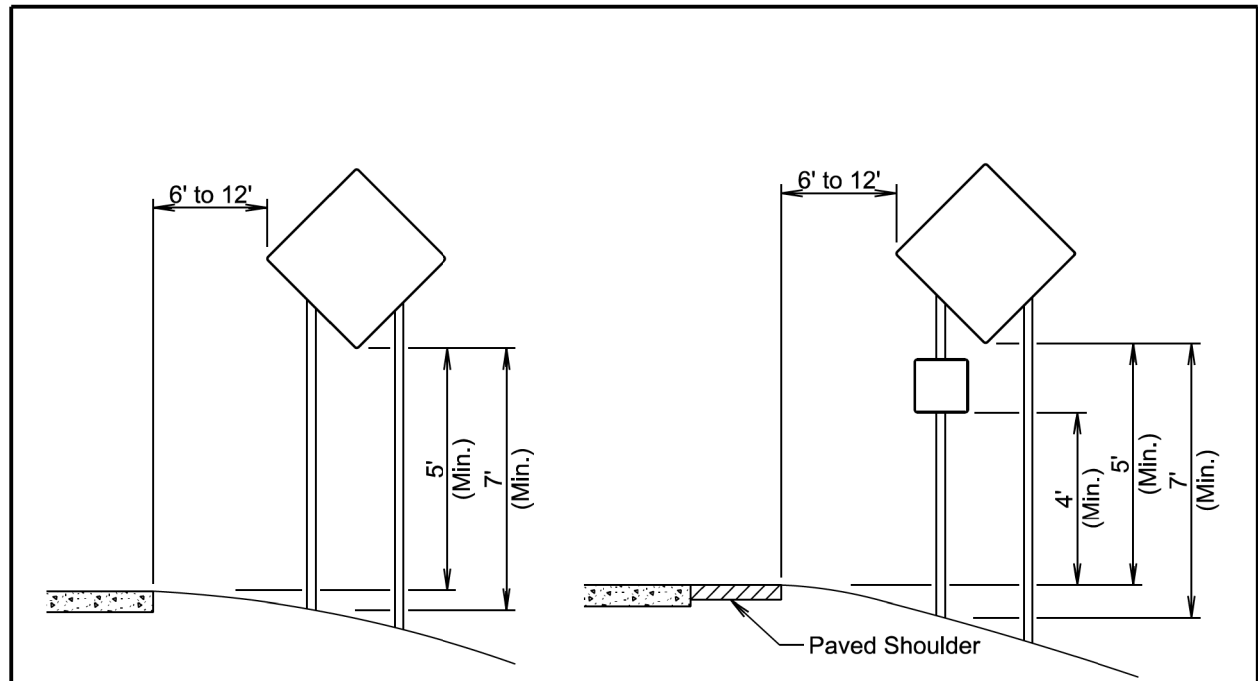
The channelizing devices will be drums or 42" cones if traffic control must remain overnight.

42" cones may be used in place of the drums shown in the taper if setup will not be used during night time hours.



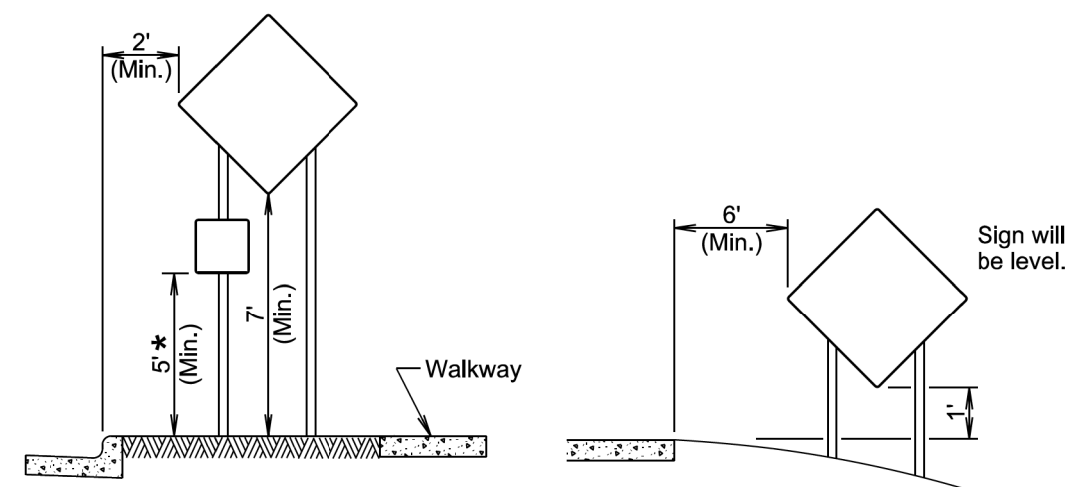
September 22, 2021

SD DOT	WORK IN VICINITY OF ENTRANCE RAMP	PLATE NUMBER 634.70
		Sheet 1 of 1
Published Date: 2024		



RURAL DISTRICT

RURAL DISTRICT WITH SUPPLEMENTAL PLATE




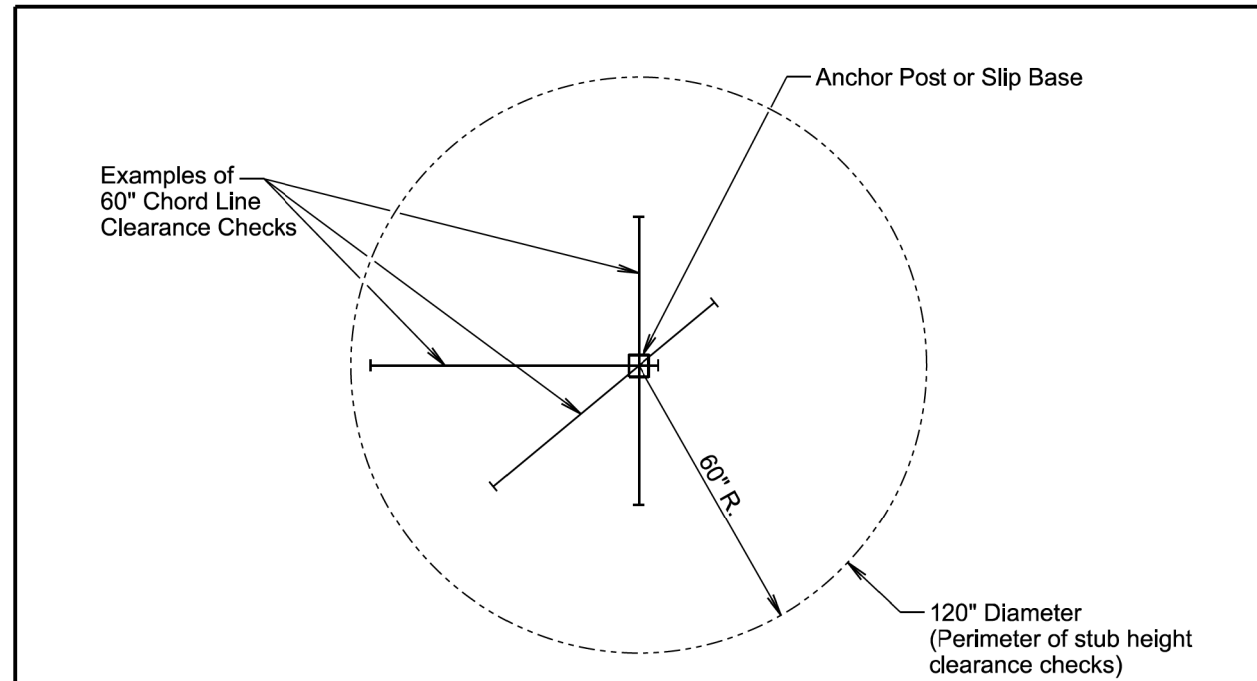
URBAN DISTRICT

RURAL DISTRICT 3 DAY MAXIMUM

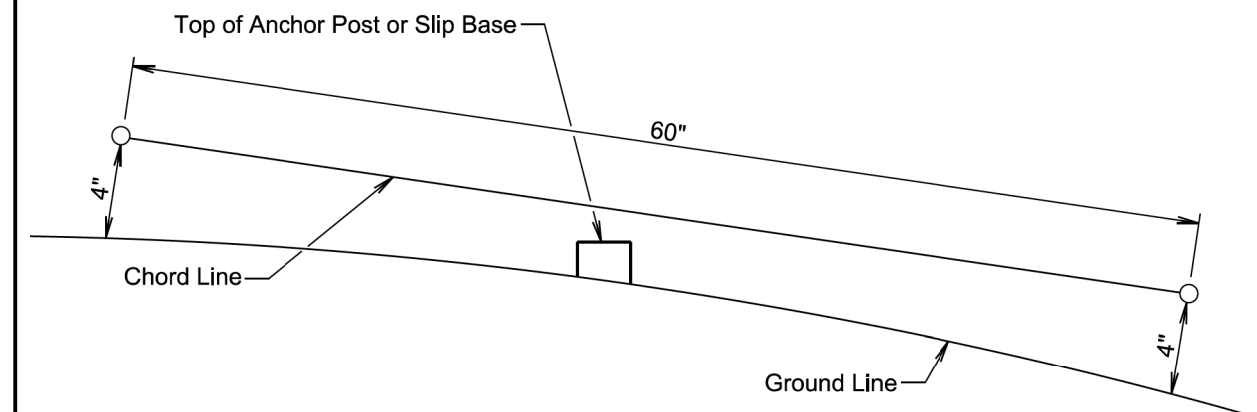
* If the bottom of supplemental plate is mounted lower than 7 feet above a pedestrian walkway, the supplemental plate should not project more than 4" into the pedestrian facility.

January 22, 2021

	CRASHWORTHY SIGN SUPPORTS <i>(Typical Construction Signing)</i>	PLATE NUMBER 634.85
		Sheet 1 of 1
Published Date: 2024		



PLAN VIEW
(Examples of stub height clearance checks)



ELEVATION VIEW

GENERAL NOTES:

The top of anchor posts and slip bases WILL NOT extend above a 60" chord line within a 120" diameter circle around the post with ends 4" above the ground.

At locations where there is curb and gutter adjacent to the breakaway sign support, the stub height will be a maximum of 4" above the ground line at the localized area adjacent to the breakaway support stub.

The 4" stub height clearance is not necessary for U-channel lap splices where the support is designed to yield (bend) at the base.

January 22, 2021

	BREAKAWAY SUPPORT STUB CLEARANCE	PLATE NUMBER 634.99
		Sheet 1 of 1
Published Date: 2024		