

June 5, 2026

Re: **On-Site Visit Opportunities**; Project EM-P 0044(207)290 – PCN 05X0 – SD44 Missouri River Bridge (Platte/Winner)

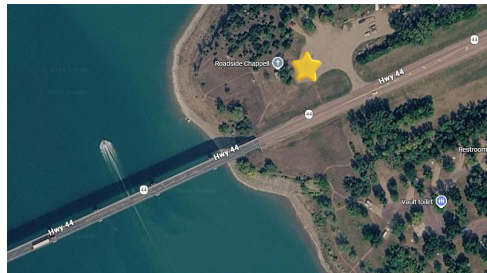
To Whom It May Concern,

The South Dakota Department of Transportation (SDDOT) will offer two on-site visit opportunities for contractors interested in the Platte/Winner Bridge project. These visits are intended to provide prospective bidders with the chance to become familiar with the project site and meet with SDDOT. The preference is for subcontractors to coordinate on-site visits with prime contractors.

The SDDOT will be available to meet with contractors on Tuesday, June 23rd and Thursday, June 25th from 10:00 a.m. to 4:00 p.m. CST.

Meeting Location

Attendees should meet in the parking lot on the northeast side of the project site.



Attendance Request

Contractors must sign up for a time slot by filling out the form attached and emailing it to the SDDOT at DOTBids@State.SD.US. The SDDOT asks that all requests for on-site visits be made by Friday, June 19th.

We appreciate your interest in the Platte/Winner Bridge project and look forward to meeting with you on site.

Sincerely,
SD DOT

Contractor On-Site Visit Request Form

Project: SD44 Platte/Winner Bridge – PCN 05X0

Date of Request: _____

Company Information

- Company Name: _____
- Primary Contact Name: _____
- Phone Number: _____
- Email Address: _____

Attendees for On-Site Visit

(Please list all individuals who will attend.)

1. Name: _____ Phone: _____
2. Name: _____ Phone: _____
3. Name: _____ Phone: _____
4. Additional attendees (if any): _____

Type of Work Performed by Your Company

Requested On-Site Visit Time

Site visits are offered in 30-minute increments between **10:00 AM and 4:00 PM**. If your preferred time slot is not available, the SDDOT will contact you to pick a new time. The contractor will receive an email notification once their requested time slot has been reviewed and approved.

Preferred Time Slot: _____

Request for Additional Time (Optional)

If your team requires more than the standard 30-minute visit, please describe the reason and the amount of additional time requested. Additional time is not guaranteed but will be considered:

Signature

By submitting this form, the contractor acknowledges that site visit scheduling is subject to availability and confirmation.

Name: _____

Title: _____

Signature: _____ Date: _____

June 5, 2026

Re: **Virtual Pre-Bid Meeting** Project EM-P 0044(207)290 – PCN 05X0 – SD44 Missouri River Bridge
(Platte/Winner)

To Whom It May Concern,

A pre-bid meeting for the Platte/Winner Bridge Reconstruction Project is scheduled for Tuesday, July 7th at 1:30 PM CST and will be conducted via Microsoft Teams. All interested contracting parties are invited to participate using the meeting link provided below.

The meeting will include a presentation outlining the project's overall scope of work, key design elements, traffic control considerations, and contract time. Contractors will also have the opportunity to ask questions of Department staff, consultants, and project stakeholders.

Although attendance is not mandatory, all interested contracting parties are strongly encouraged to join.

Participants must join the meeting using the link provided. To minimize audio feedback, please ensure your computer microphone is muted. Because the meeting will be held virtually, we ask that you enter your company name followed by the names of all attendees from your organization into the Microsoft Teams chat upon joining. A recording of the pre-bid meeting will be made available on the SDDOT Contractor SharePoint site following the meeting.

Join Platte/Winner Bridge Pre-Bid Meeting

Date: July 7, 2026

Time: 1:30 – 3:30 PM (CST)

Meeting ID: 228 438 244 171 169

Additional instructions regarding the meeting format will be provided at the beginning of the meeting.

We look forward to seeing you there!

Sincerely,
SD DOT

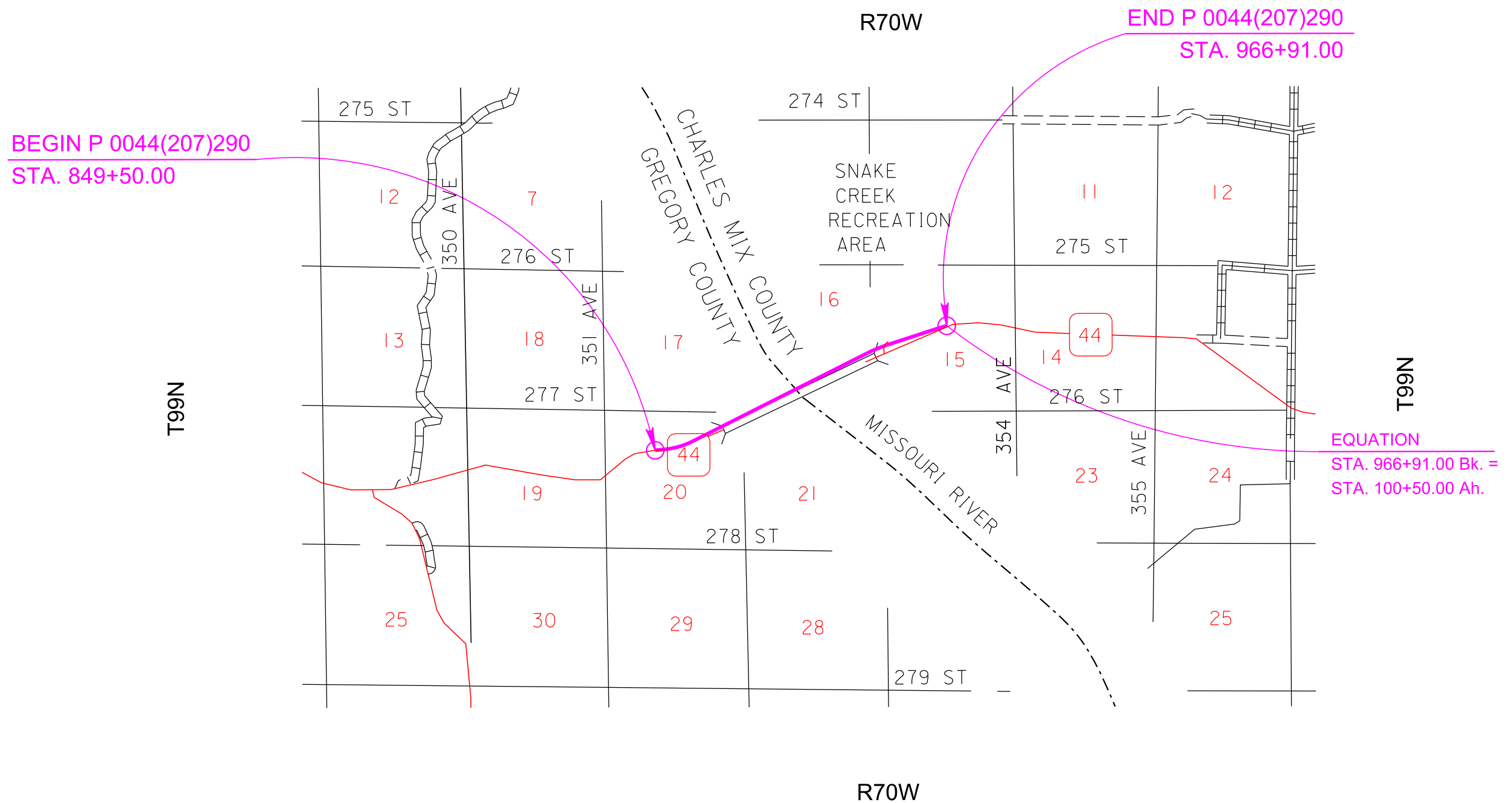
Section F: Surfacing Plans

STATE OF SOUTH DAKOTA	PROJECT	SHEET	TOTAL SHEETS
	P 0044(207)290	F1	F21

Plotting Date: 11/25/2025

INDEX OF SHEETS

- F1 General Layout with Index
- F2 - F4 Estimate of Quantities,
Notes, Rates, and Tables
- F5 - F8 Typical Surfacing Sections
- F9 Driving Surface Transitions
- F10 - F20 AC Pavement Layouts
- F21 Special Details



SECTION F ESTIMATE OF QUANTITIES

BID ITEM NUMBER	ITEM	QUANTITY	UNIT
120E6200	Water for Granular Material	343.9	MGal
260E1080	Base Course, Salvaged, State Furnished	28,658.8	Ton
320E1200	Asphalt Concrete Composite	1,797.2	Ton
330E0010	MC-70 Asphalt for Prime	34.4	Ton
330E0300	SS-1h or CSS-1h Asphalt for Fog Seal	4.7	Ton
330E1000	Blotting Sand for Prime	86.7	Ton
330E3000	Sand for Fog Seal	10.0	Ton
360E0020	AE150S Asphalt for Surface Treatment	29.5	Ton
360E1050	Type 3 Cover Aggregate	395.8	Ton

SURFACING THICKNESS DIMENSIONS

Plans tonnage will be applied even though the thickness may vary from that shown on the plans.

At those locations where material must be placed to achieve a required elevation, the depth/quantity may be varied to achieve the required elevation.

CHECKING SPREAD RATES

The Contractor will be responsible for checking the Base Course, Salvaged, State Furnished, Asphalt Concrete Composite, and Asphalt Surface Treatment spread rates and taking the weigh delivery tickets as the surfacing material arrives on the project and is placed onto the roadway.

The Contractor will compute the required spread rates for each typical surfacing section and create a spread chart prior to the start of material delivery and placement. The Engineer will review and check the Contractor's calculations and spread charts. The station to station spread will be written on each ticket as the surfacing material is delivered to the roadway.

At the end of each day's shift, the Contractor will verify the following:

- All tickets are present and accounted for,
- The quantity summary for each item is calculated,
- The amount of material wasted if any,
- Each day's ticket summary is marked with the corresponding 'computed by',
- The ticket summary is initialed and certified that the delivered and placed quantity is correct.

All daily tickets and the summary by item will be given to the Engineer no later than the following morning.

If the checker is not properly and accurately performing the required duties, the Contractor will correct the problem or replace the checker with an individual capable of performing the duties to the satisfaction of the Engineer. Failure to do so will result in suspension of the work.

The Department will perform depth checks. The Contractor will be responsible for placement of material to the correct depth unless otherwise directed by the Engineer. If the placed material is not within a tolerance of ±1/2 inch of the plan shown depth, the Contractor will correct the problem at no additional cost to the Department. Excess material above the tolerance will not be paid for. Achieving the correct depth may require picking up and moving material or other action as required by the Engineer. All costs for providing the Contractor furnished checker and performing all related duties will be incidental to the contract lump sum price for the "Checker". No allowances will be made to the contract lump sum price for Checker due to authorized quantity variations unless the quantities for the material being checked vary above or below the estimated quantities by more than 25 percent. Payment for the Checker will then be increased or decreased by the same proportion as the placed material quantity bears to the estimated material quantity.

BASE COURSE, SALVAGED, STATE FURNISHED

Base Course, Salvaged, State Furnished estimated at 28,658.8 tons (for informational purposes only) of granular material will be obtained from the stockpile site located in the SE ¼ of Section 22, Township 101 North, Range 72 West of the 5th P.M, Lyman County, South Dakota on SD47 near Iona. There is approximately 40,000 tons of material in the stockpile.

No gradation testing will be required for the Base Course, Salvaged, State Furnished material.

The Base Course, Salvaged, State Furnished is royalty free to the Contractor.

All other requirements for Base Course, Salvaged will apply.

STATE OF SOUTH DAKOTA	PROJECT P 0044(207)290	SHEET F2	TOTAL SHEETS F21
-----------------------	---------------------------	-------------	---------------------

Plotting Date: 11/25/2025
Revised 02-02-2024 LLA

ASPHALT CONCRETE COMPOSITE

Asphalt Concrete Composite will include MC-70 Asphalt for Prime placed at the rate of 0.30 gallons per square yard. The Asphalt for Prime will be applied to the Base Course, Salvaged, State Furnished for the full width of the bottom layer of Asphalt Concrete Composite plus one foot additional on the outside shoulder.

Asphalt for tack SS-1h or CSS-1h will be applied prior to each lift of Asphalt Concrete Composite. Asphalt for tack will be applied at a rate of 0.09 gallons per square yard on existing pavement or milled asphalt concrete surfaces and at a rate of 0.06 gallons per square yard on primed base course or new asphalt concrete pavement. The Asphalt for tack will be applied for the full width of the bottom layer of Asphalt Concrete Composite plus one-half foot additional on the outside shoulder.

COVER AGGREGATE

Cover Aggregate will conform to the requirements of the Specifications for Type 3 and will be furnished by the Contractor.

BLOTTING SAND FOR PRIME

Included in the Estimate of Quantities are 10 tons of Blotting Sand for Prime to be used where necessary for maintenance of traffic as directed by the Engineer. (Rate = 10 pounds per square yard)

STATE OF SOUTH DAKOTA	PROJECT	SHEET	TOTAL SHEETS
	P 0044(207)290	F3	F21

Plotting Date: 11/25/2025
Revised 02-02-2024 LLA

FOG SEAL

The fog seal will be placed following the completion of the asphalt surface treatment. Prior to the application of the fog seal, the Contractor will be required to broom the asphalt surface treatment. A CSS-1h or SS-1h emulsion will be used for the fog seal application. A water-to-emulsion rate of 1:1 should be used for the Fog Seal application.

The Contractor will fog seal the entire asphalt surface treatment surface.

The Contractor will plan the fog seal operation to allow adequate cure time for the fog seal and to minimize/eliminate the need to apply Sand for Fog Seal.

If adequate cure time for the Fog Seal is not available, to facilitate traffic, the Contractor will be allowed to place a minimum sufficient amount of blotting sand on the fog seal to allow traffic to cross the uncured portion of the fog seal, as permitted by the Engineer.

Sand for Fog Seal is only intended to be placed for accesses to businesses, intersection crossings, and as determined by the Engineer to facilitate traffic movements. Sand for Fog Seal will not be placed to accelerate the Contractor's schedule.

Sand that is applied will be broomed off the surface of the roadway once the fog seal has sufficiently cured as determined by the Engineer.

Sand for Fog Seal will conform to Section 879.1.B.

Prior to hauling, Sand for Fog Seal will be screened to minimize segregation, eliminate oversize, and effectively breakup or discard material bonded into chunks. All costs for supplying, hauling, placing, and brooming the blotting sand will be incidental to the contract unit price per ton for Sand for Fog Seal.

The Estimate of Surfacing Quantities is based on the following quantities of materials per station.

SD HIGHWAY 44 - MAINLINE

Sta. 849+50.00 to Sta. 873+19.75
Sta. 958+96.64 to Sta. 966+91.00

Mainline
Base Course, Salvaged, State Furnished 342.82 tons

Water for Granular Material at the rate of 4.11 Mgal

MC-70 Asphalt for Prime at the Rate of 0.57 tons applied 43 feet wide
(Rate = 0.30 gallon per square yard).

Blotting Sand for Prime at the rate of 1.33 tons applied 24 feet wide
(Rate = 10 lbs. per square yard).

ASPHALT SURFACE TREATMENT

AE150S Asphalt for Surface Treatment at the rate of 0.46 tons applied 28 feet wide (Rate = 0.35 gallon per square yard).

Type 3 Cover Aggregate at the rate of 6.22 Tons applied 28 feet wide
(Rate = 40 lbs. per square yard).

FOG SEAL

SS-1h or CSS-1h Asphalt for Fog Seal at the rate of 0.07 ton applied 28 feet wide (Rate = 0.05 gallon per square yard).

SD HIGHWAY 44 - MAINLINE

Sta. 939+58.64 to Sta. 954+76.64

Mainline
Base Course, Salvaged, State Furnished 433.90 tons

Water for Granular Material at the rate of 5.21 Mgal

MC-70 Asphalt for Prime at the Rate of 0.72 tons applied 55 feet wide
(Rate = 0.30 gallon per square yard).

Blotting Sand for Prime at the rate of 2.00 tons applied 36 feet wide
(Rate = 10 lbs. per square yard).

ASPHALT SURFACE TREATMENT

AE150S Asphalt for Surface Treatment at the rate of 0.66 tons applied 40 feet wide (Rate = 0.35 gallon per square yard).

Type 3 Cover Aggregate at the rate of 8.89 Tons applied 40 feet wide
(Rate = 40 lbs. per square yard).

FOG SEAL

SS-1h or CSS-1h Asphalt for Fog Seal at the rate of 0.09 ton applied 40 feet wide (Rate = 0.05 gallon per square yard).

TABLE OF ADDITIONAL QUANTITIES

LOCATION	WATER FOR GRANULAR MATERIAL (MGal)	BASE COURSE, SALVAGED, STATE FURNISHED (Ton)	ASPHALT CONCRETE COMPOSITE			ASPHALT FOR PRIME (Ton)	BLOTTING SAND FOR PRIME (Ton)	ASPHALT FOR SURFACE TREATMENT (Ton)	COVER AGGREGATE FOR AST (Ton)	ASPHALT FOR FOG SEAL (Ton)	SAND FOR FOG SEAL (Ton)
			1st Lift (Ton)	2nd Lift (Ton)	Top Lift (Ton)						
Station to Station											
SD Highway 44 - Section 4											
873 + 19.75 to 875 + 19.75	7.6	631.8	182.9								
933 + 30.25 to 935 + 30.25	7.6	631.8	182.9								
SD Highway 44 - Section 5											
935 + 30.25 to 939 + 58.64	19.7	1,643.8			2.8	7.1	2.4	32.4	0.4		
954 + 76.64 to 958 + 96.64	19.3	1,611.4			2.7	7.0	2.4	31.7	0.4		
Park Drive North - Section 6											
5 + 24.00 to 10 + 30.48	9.6	802.8	144.3			144.3					
Park Drive South - Section 6											
15 + 00.00 to 22 + 00.79	13.3	1,110.8	199.7			199.7					
House Entrance - Section 7											
31 + 59.39 to 35 + 47.88	5.6	465.1	79.0			81.3					
Shop Entrance - Section 8											
40 + 14.02 to 45 + 35.25	8.7	725.0	129.1			128.7					
GFP Access - Section 8											
50 + 18.00 to 55 + 73.89	9.3	773.4									
Boat Access - Section 8											
0 + 18.00 to 5 + 81.63	9.4	783.7	139.6			139.1					
West Boat Ramp	22.0	1,829.5									
Driveway Sta. 958+50 R	0.9	74.1									
GFP Driveway - 3"ACC/8"BCSSF	1.4	114.1	23.3			23.3					
Kiosk Pad - 11" BCSSF	0.3	28.8									
Sand for Fog Seal for use on the project											10.0
Totals	134.7	11,226.1		1,797.2	5.5	14.1	4.8	64.1	0.8		10.0

Application Rates: MC-70 Asphalt for Prime rate = 0.30 gallon per square yard
 Blotting Sand for Prime rate = 10 lbs. per square yard.
 SS-1h or CSS-1h Asphalt for Fog Seal rate = 0.05 gallon per square yard

Plot Scale - 1:200

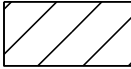

Plotted From - TRPR13462

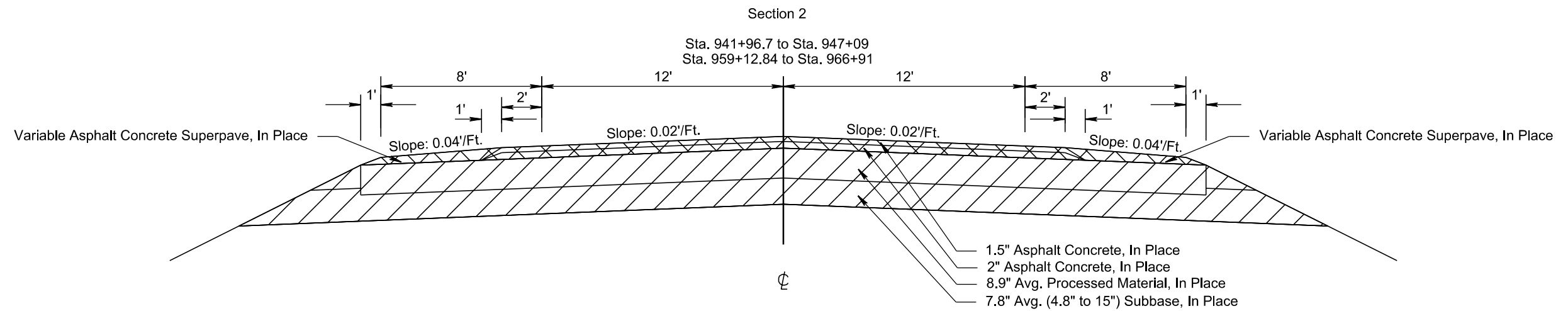
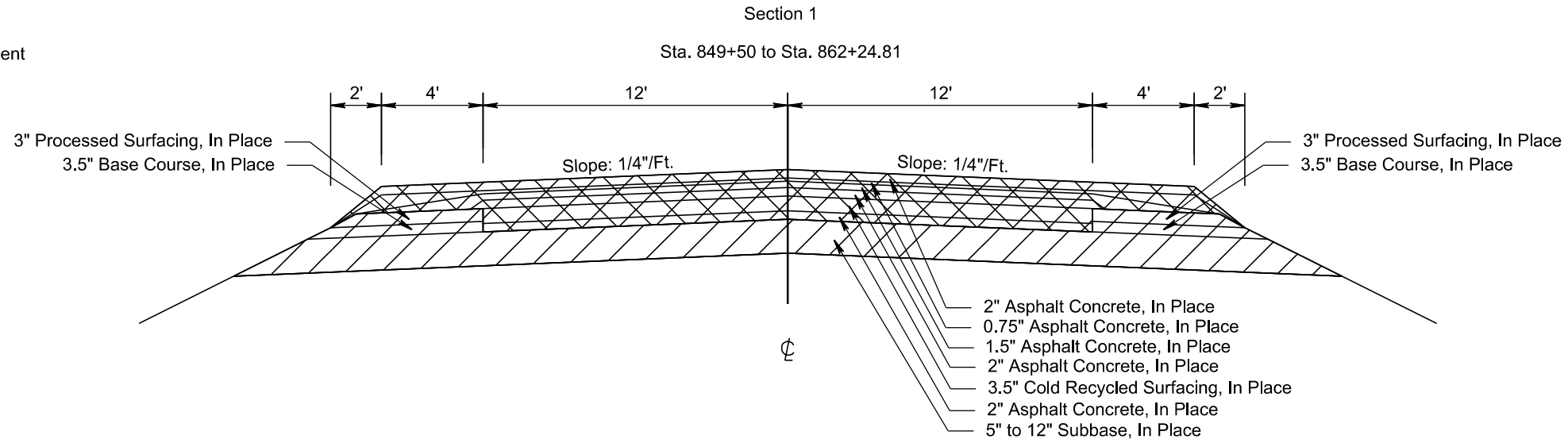
File - ...:\p1\greg05\X0\Notes\SectionF.dgn

IN PLACE TYPICAL SECTIONS

STATE OF SOUTH DAKOTA	PROJECT	SHEET	TOTAL SHEETS
	P 0044(207)290	F5	F21

Plotting Date: 11/25/2025

-  Unclassified Excavation
-  Remove Asphalt Concrete Pavement



PLOT SCALE - 1+6.00001

04X2

002K

PLOTTED FROM - TRPR13462

PLOT NAME - 5

FILE - ... \05X0_TYPICAL SECTIONS.DGN

TYPICAL SURFACING SECTIONS

STATE OF SOUTH DAKOTA	PROJECT	SHEET	TOTAL SHEETS
	P 0044(207)290	F6	F21

Plotting Date: 11/25/2025

PLOT SCALE - 1+6.00001

PLOT NAME - 6

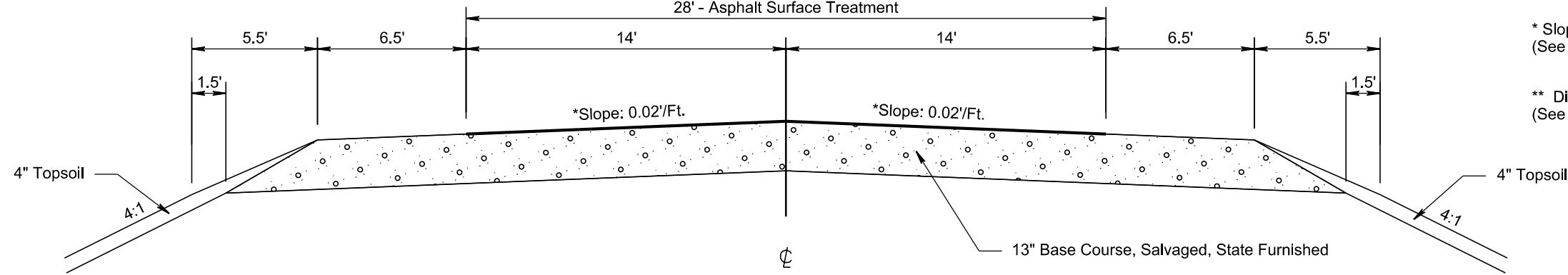
FILE - ... \06X0.TYPICAL SECTIONS.DGN

Section 3 SD Highway 44

Sta. 849+50 to Sta. 873+19.75
Sta. 958+96.64 to Sta. 966+91

Diversion
**Sta. 960+99.14 to Sta. a 102+35.47

28' - Asphalt Surface Treatment



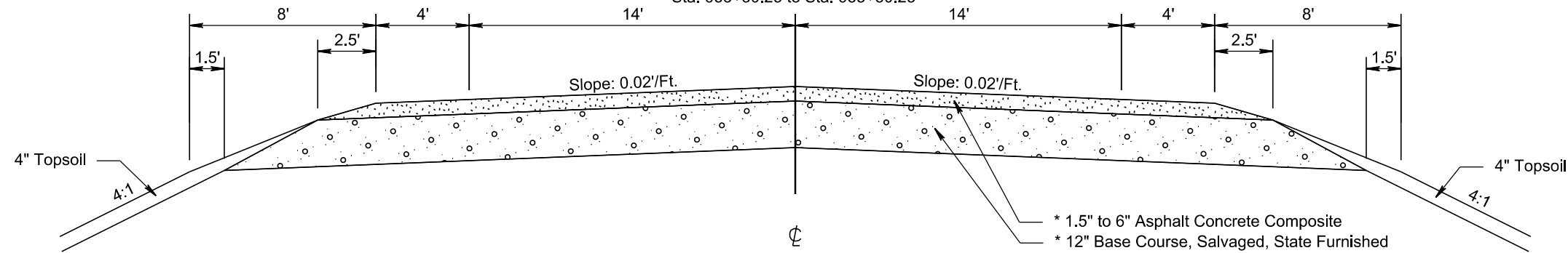
* Slope varies within Superelevation limits
(See Section B plans for Superelevation Table)

** Diversion Total Width is 30'
(See Section B plans for more information)

Section 4 SD Highway 44

Sta. 873+19.75 to Sta. 875+19.75
Sta. 933+30.25 to Sta. 935+30.25

Bridge:
Sta. 875+19.75 to Sta. 933+30.25

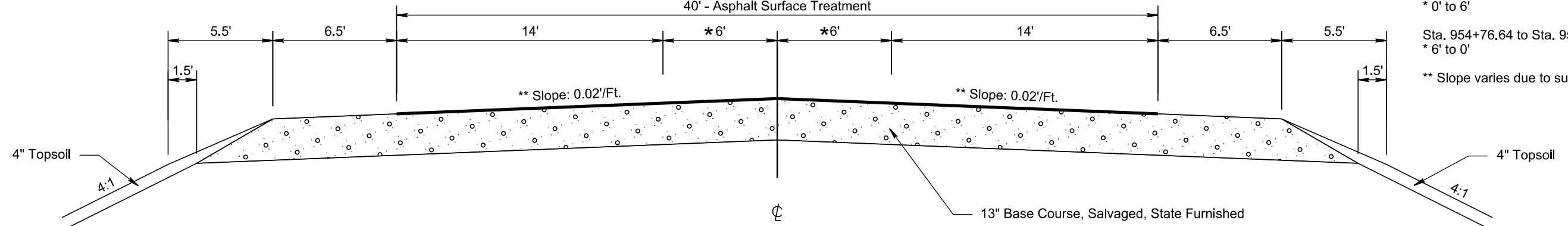


* See Transition Details Sheet
for Additional Asphalt Concrete Depth
at Bridge Sleeper Slab

Section 5 SD Highway 44

Sta. 935+30.25 to Sta. 958+96.64

40' - Asphalt Surface Treatment



Transitions:

Sta. 935+30.25 to Sta. 939+58.64
* 0' to 6'

Sta. 954+76.64 to Sta. 958+96.64
* 6' to 0'

** Slope varies due to superelevation

PLOTTED FROM - TRPR13462

TYPICAL SURFACING SECTIONS

STATE OF SOUTH DAKOTA	PROJECT	SHEET	TOTAL SHEETS
	P 0044(207)290	F7	F21

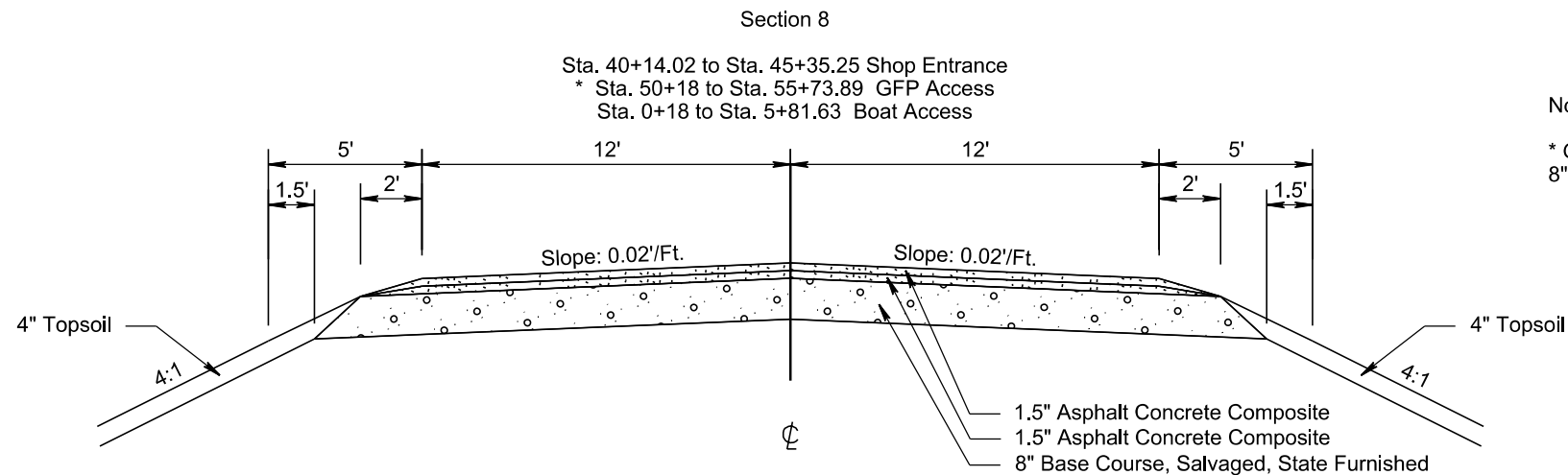
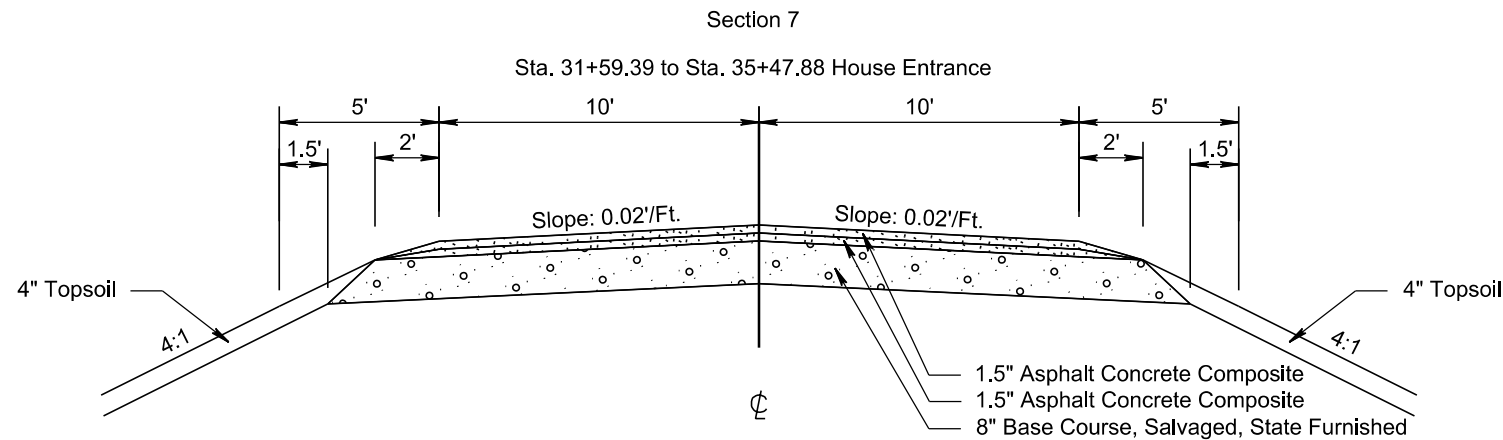
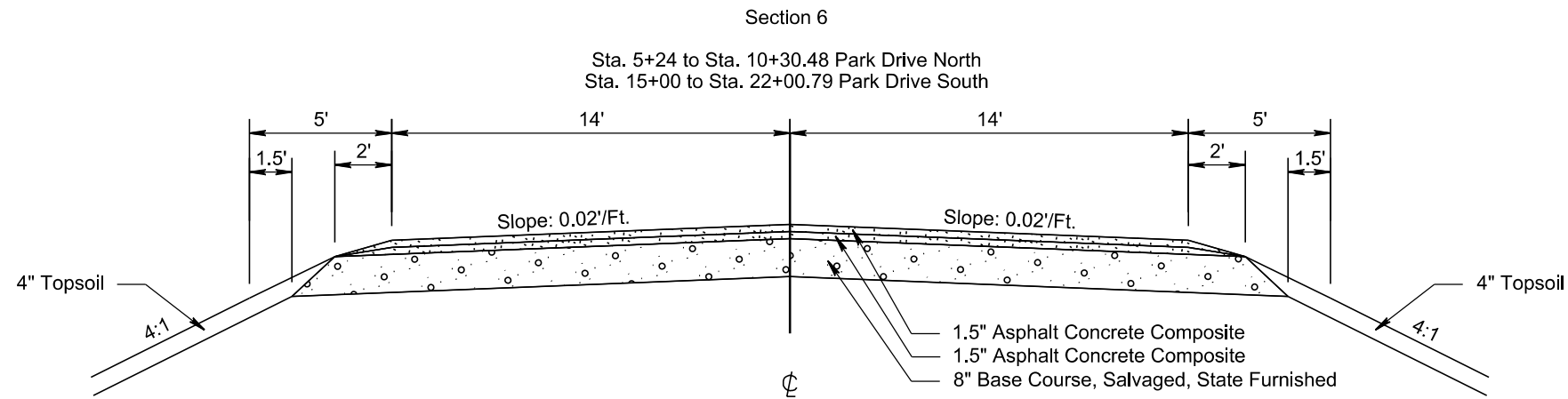
Plotting Date: 11/25/2025

PLOT SCALE - 1+6.00001

PLOT NAME - 7

FILE - ... \05X0.TYPICAL SECTIONS.DGN

PLOTTED FROM - TRPR13462



Note:

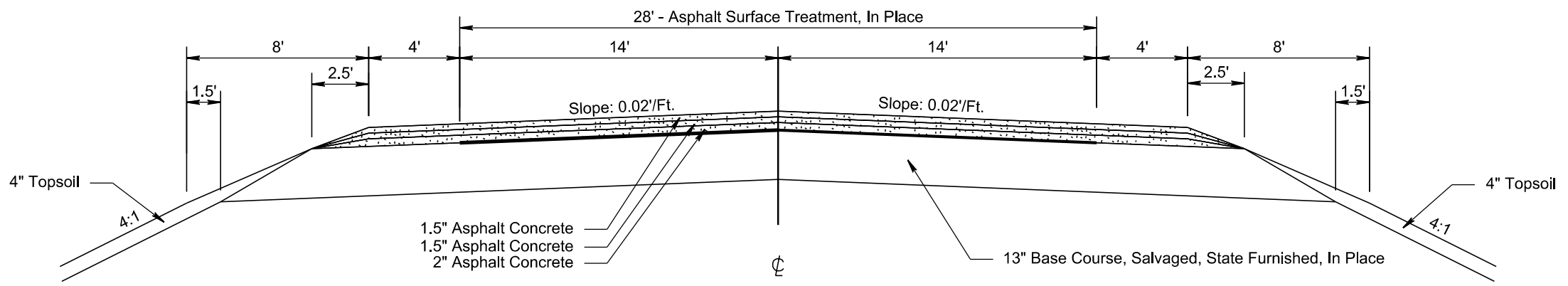
* GFP Access from Sta. 50+18 to Sta. 55+73.89
8" Base Course, Salvaged, State Furnished Only

TYPICAL SURFACING SECTIONS

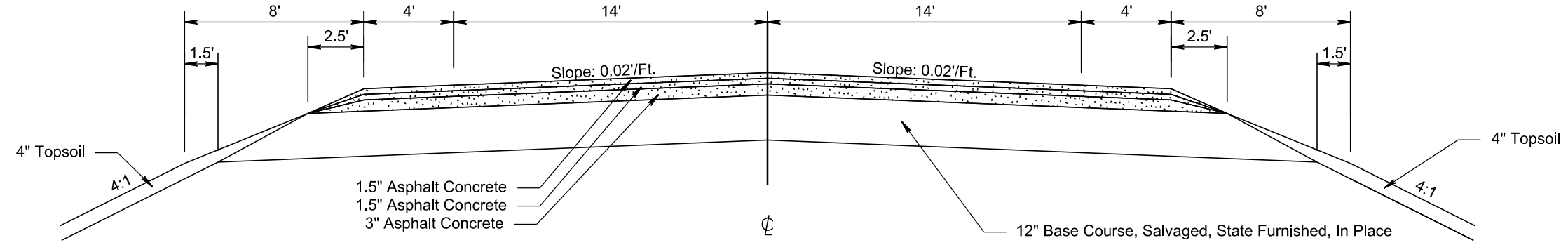
STATE OF SOUTH DAKOTA	PROJECT	SHEET	TOTAL SHEETS
	P 0044(207)290	F8	F21

Plotting Date: 11/25/2025

Section 9
SD Highway 44
Sta. 849+50 to Sta. 873+19.75
Sta. 958+96.64 to Sta. 966+91
(Ultimate Surfacing Section Information Only)

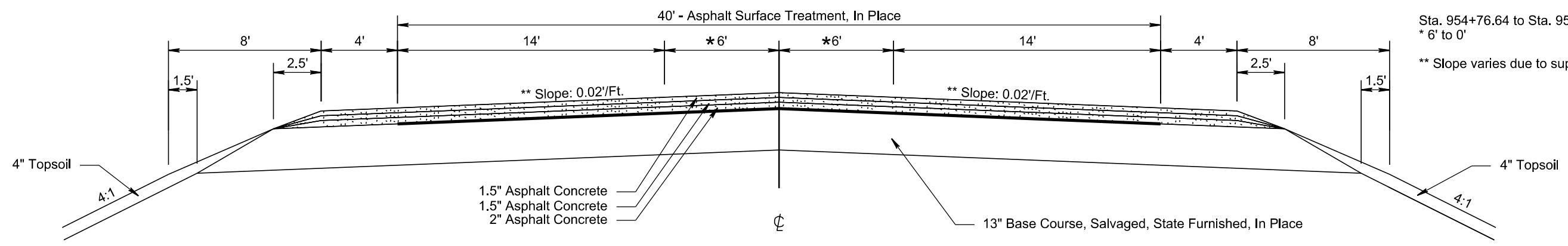


Section 10
SD Highway 44
Sta. 873+19.75 to Sta. 875+19.75
Sta. 933+30.25 to Sta. 935+30.25
(Ultimate Surfacing Section Information Only)



Section 11
SD Highway 44

Sta. 935+30.25 to Sta. 958+96.64
(Ultimate Surfacing Section Information Only)



Transitions:
Sta. 935+30.25 to Sta. 939+58.64
* 0' to 6'
Sta. 954+76.64 to Sta. 958+96.64
* 6' to 0'
** Slope varies due to superelevation

PLOT SCALE - 1+6.00001

PLOTTED FROM - TRPR13462

PLOT NAME - 8

FILE - ... \05X0.TYPICAL SECTIONS.DGN

DRIVING SURFACE TRANSITION DETAILS (Bridge Tie In)

STATE OF SOUTH DAKOTA	PROJECT	SHEET	TOTAL SHEETS
	P 0044(207)290	F9	F21

Plotting Date: 11/25/2025

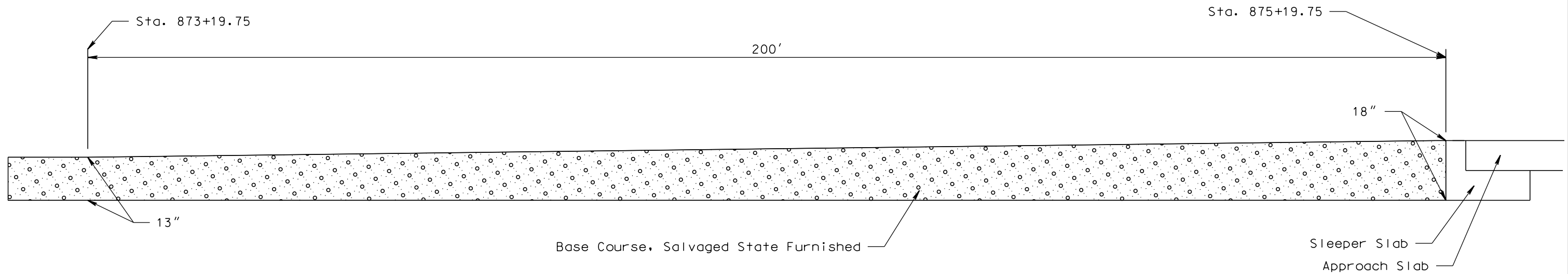
Revised: 11/25/2025 RTS

Sheet 1 of 1 Sheets

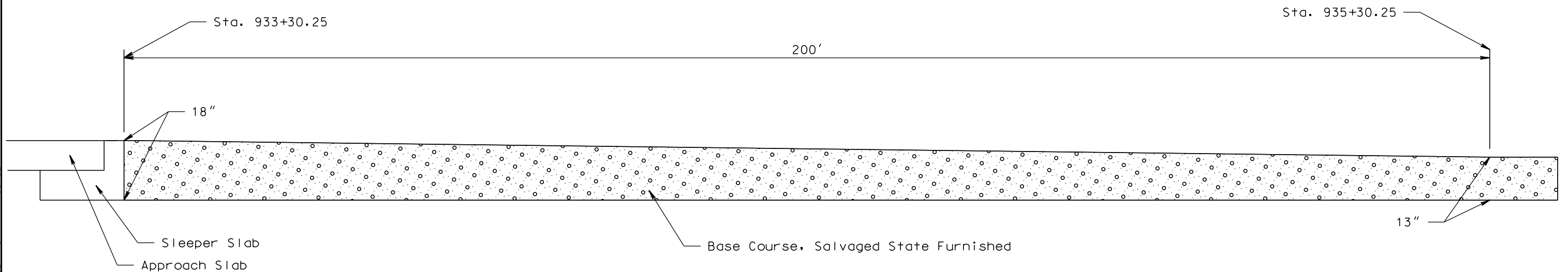
NOT TO SCALE

See TYPICAL SURFACING SECTIONS and SURFACING LAYOUTS located elsewhere in these plans for additional surfacing details.

MAINLINE STA. 873+19.75 to STA. 875+19.75 LONGITUDINAL SECTION SHOWING SURFACING AT CENTERLINE



MAINLINE STA. 933+30.25 to STA. 935+30.25 LONGITUDINAL SECTION SHOWING SURFACING AT CENTERLINE



PLOT SCALE - 1:15

PLOT NAME - 9

FILE - ... \05X0.DRIVING SURF TRANS.DGN

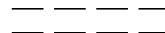
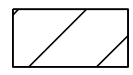

PLOTTED FROM - TRP13462

ASPHALT CONCRETE LAYOUTS

STATE OF SOUTH DAKOTA	PROJECT	SHEET	TOTAL SHEETS
	P 0044(207)290	F10	F21

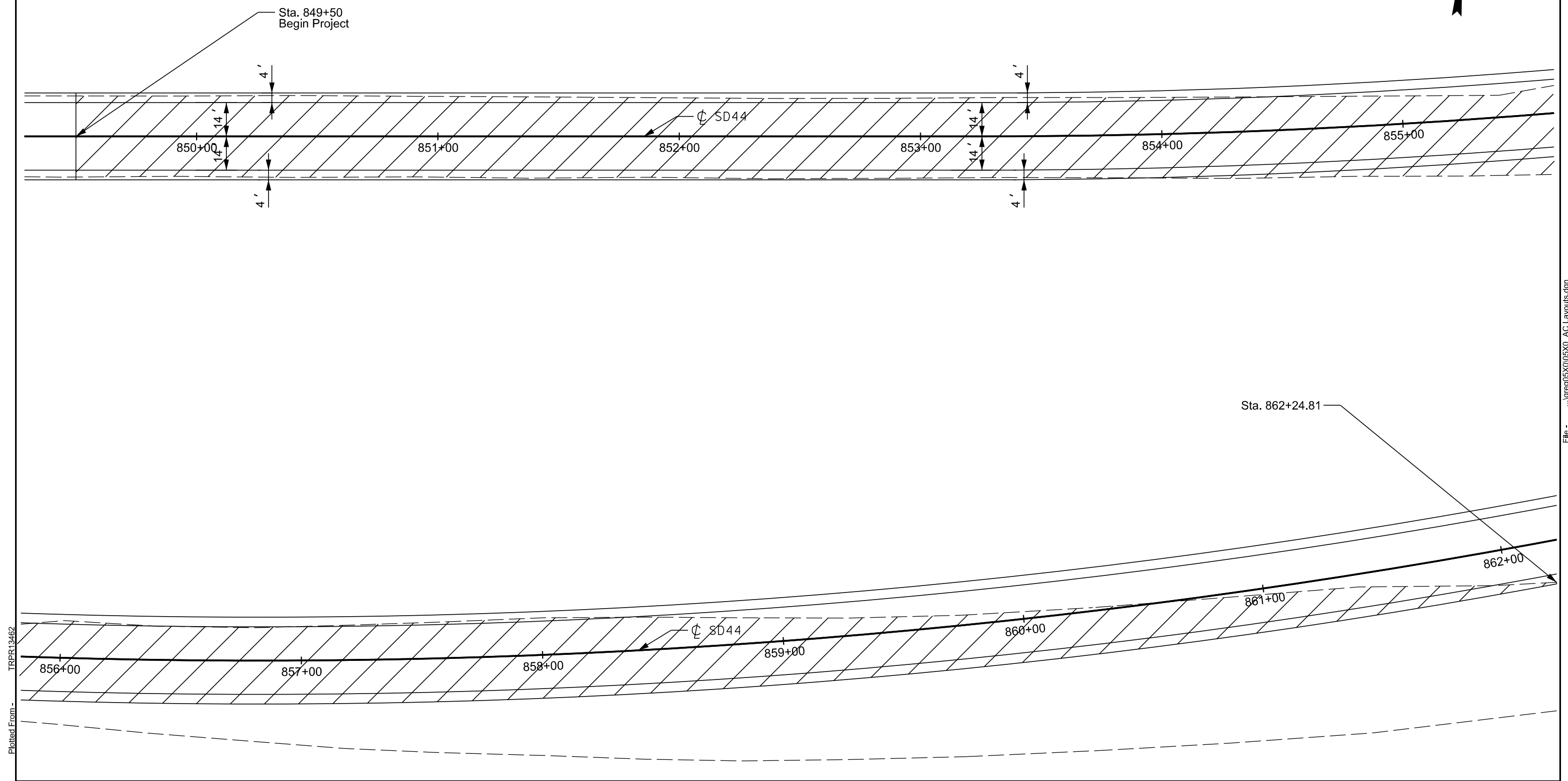
Plotting Date: 11/25/2025

Scale 1 Inch = 40 Feet
Sheet 1 of 11 Sheets

-  Existing Roadway
-  Remove Asphalt Concrete Pavement & Unclassified Excavation
-  Asphalt Concrete Composite Bridge Tie In



Plot Scale - 1:40



Plotted From - TRPR13462

File - ... \greg05X005X0_AC Layouts.dgn

ASPHALT CONCRETE LAYOUTS

STATE OF SOUTH DAKOTA	PROJECT	SHEET	TOTAL SHEETS
	P 0044(207)290	F11	F21
Plotting Date: 11/25/2025			

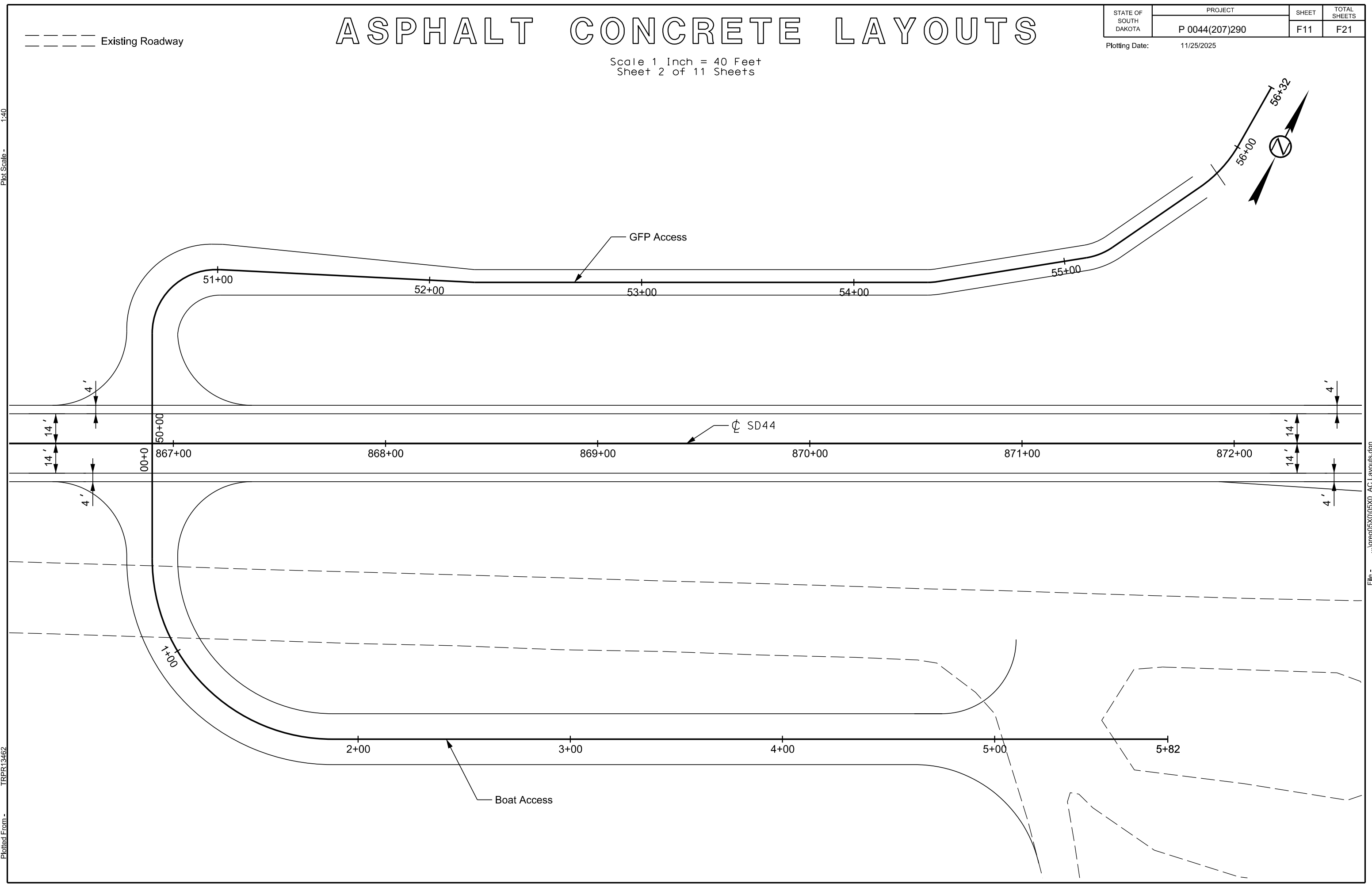
Scale 1 Inch = 40 Feet
Sheet 2 of 11 Sheets

Existing Roadway

Plot Scale - 1:40

Plotted From - TRPR13462

File - ...Agreg05X005X0_AC Layouts.dgn



ASPHALT CONCRETE LAYOUTS

STATE OF SOUTH DAKOTA	PROJECT P 0044(207)290	SHEET F12	TOTAL SHEETS F21
Plotting Date: 11/25/2025			

Scale 1 Inch = 40 Feet
Sheet 3 of 11 Sheets

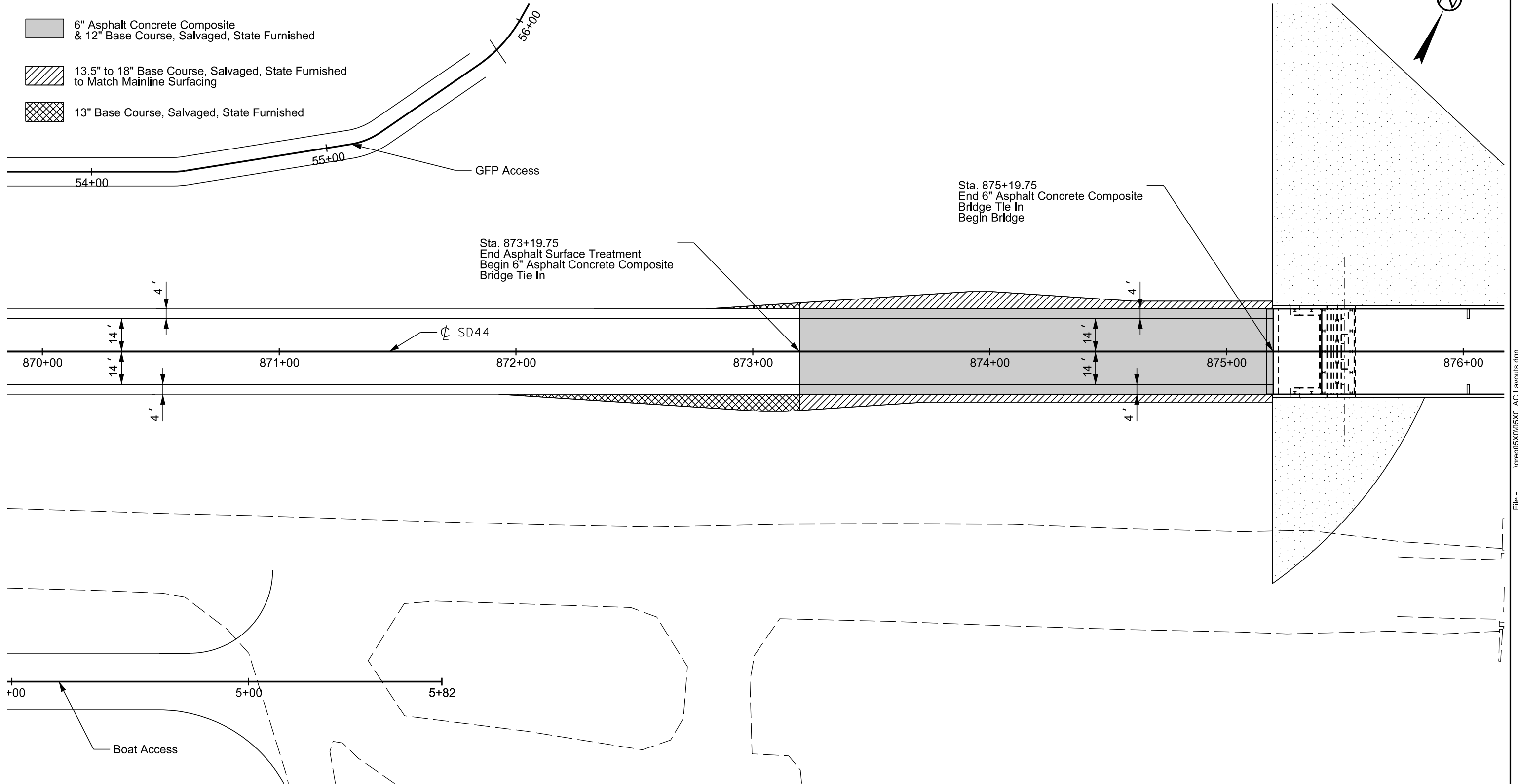
--- Existing Roadway

6" Asphalt Concrete Composite & 12" Base Course, Salvaged, State Furnished

13.5" to 18" Base Course, Salvaged, State Furnished to Match Mainline Surfacing

13" Base Course, Salvaged, State Furnished

Plot Scale - 1:40



Plotted From - TRPR13462

File - ...Agreg05X005X0_AC Layouts.dgn

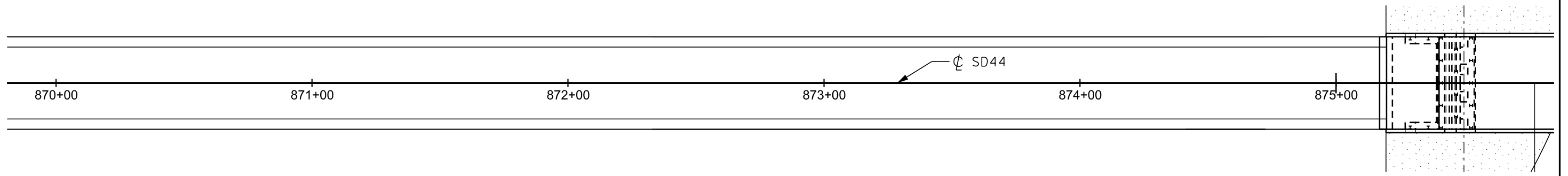
ASPHALT CONCRETE LAYOUTS

STATE OF SOUTH DAKOTA	PROJECT	SHEET	TOTAL SHEETS
	P 0044(207)290	F13	F21

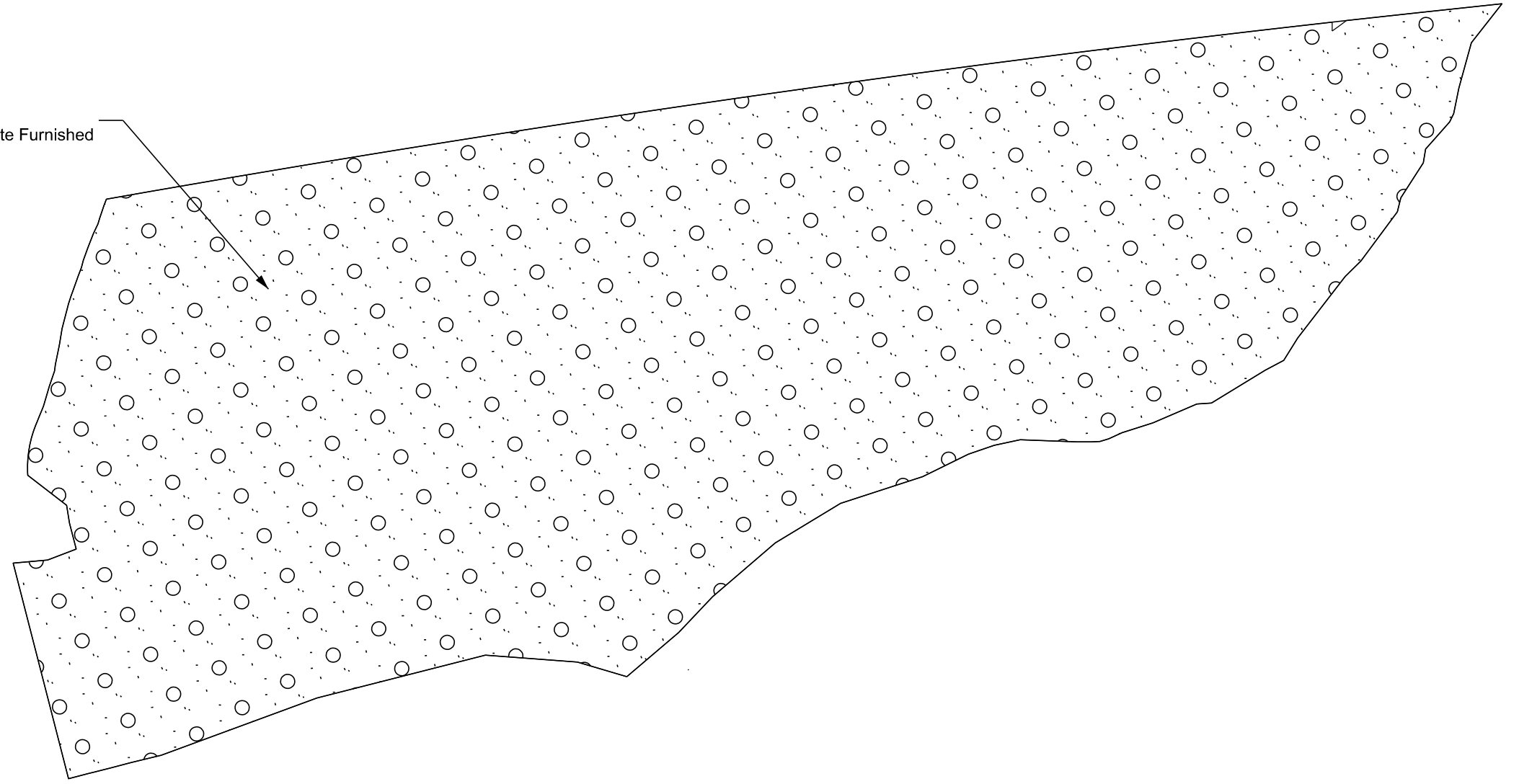
Plotting Date: 11/25/2025

Scale 1 Inch = 40 Feet
Sheet 4 of 11 Sheets

Plot Scale - 1:40



West Boat Ramp
6" Base Course, Salvaged, State Furnished



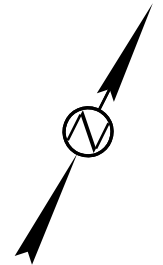
Plotted From - TRPR13462

File - ... \greg05X005X0_AC Layouts.dgn

ASPHALT CONCRETE LAYOUTS

Scale 1 Inch = 40 Feet
Sheet 5 of 11 Sheets

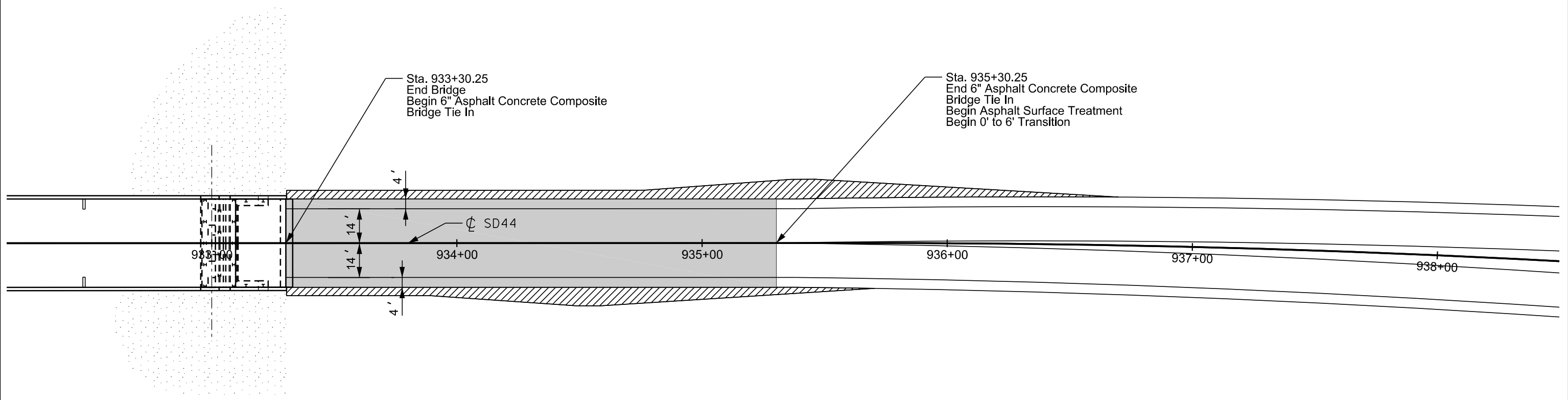
STATE OF SOUTH DAKOTA	PROJECT	SHEET	TOTAL SHEETS
	P 0044(207)290	F14	F21
Plotting Date:		11/25/2025	



- Existing Roadway
- 6" Asphalt Concrete Composite & 12" Base Course, Salvaged, State Furnished
- ▨ 18" to 12" Base Course, Salvaged, State Furnished to Match Mainline Surfacing

Plot Scale - 1:40

Plotted From - TRPR13462



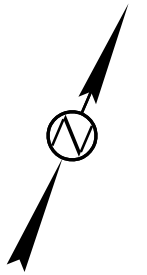
File - ... \greg05\005\X0_AC Layouts.dgn

ASPHALT CONCRETE LAYOUTS

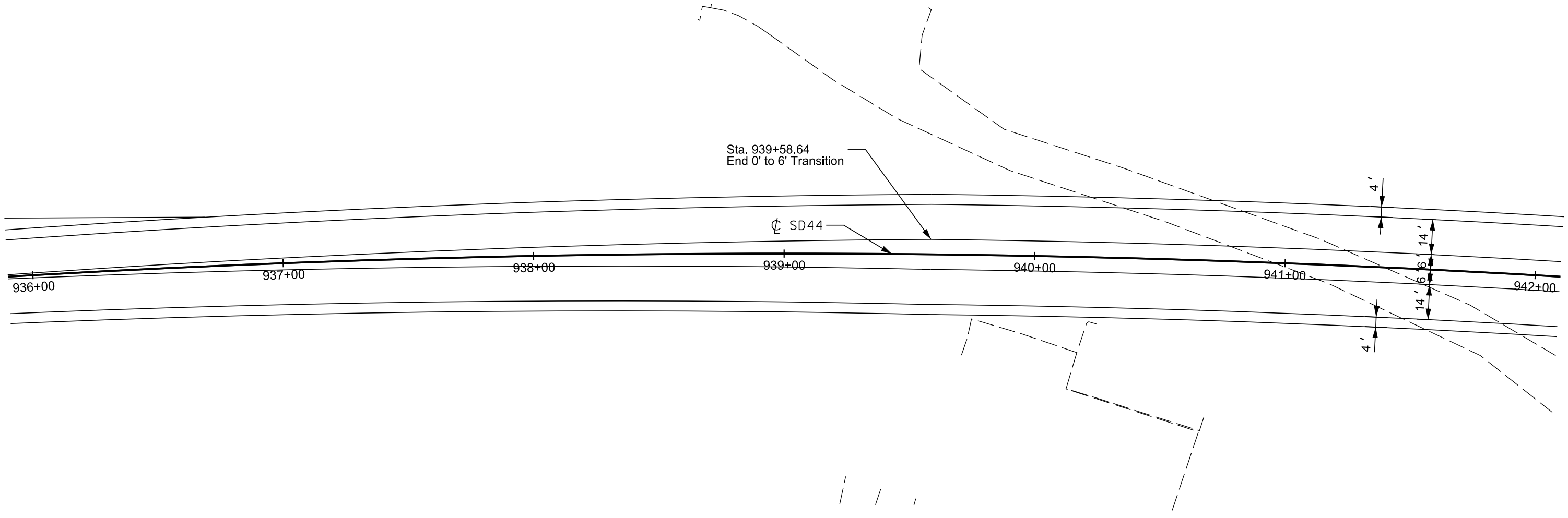
Scale 1 Inch = 40 Feet
Sheet 6 of 11 Sheets

STATE OF SOUTH DAKOTA	PROJECT	SHEET	TOTAL SHEETS
	P 0044(207)290	F15	F21
Plotting Date: 11/25/2025			

--- Existing Roadway



Plot Scale - 1:40



Plotted From - TRPR13462

File - ... \greg05X005X0_AC Layouts.dgn

ASPHALT CONCRETE LAYOUTS

STATE OF SOUTH DAKOTA	PROJECT	SHEET	TOTAL SHEETS
	P 0044(207)290	F16	F21

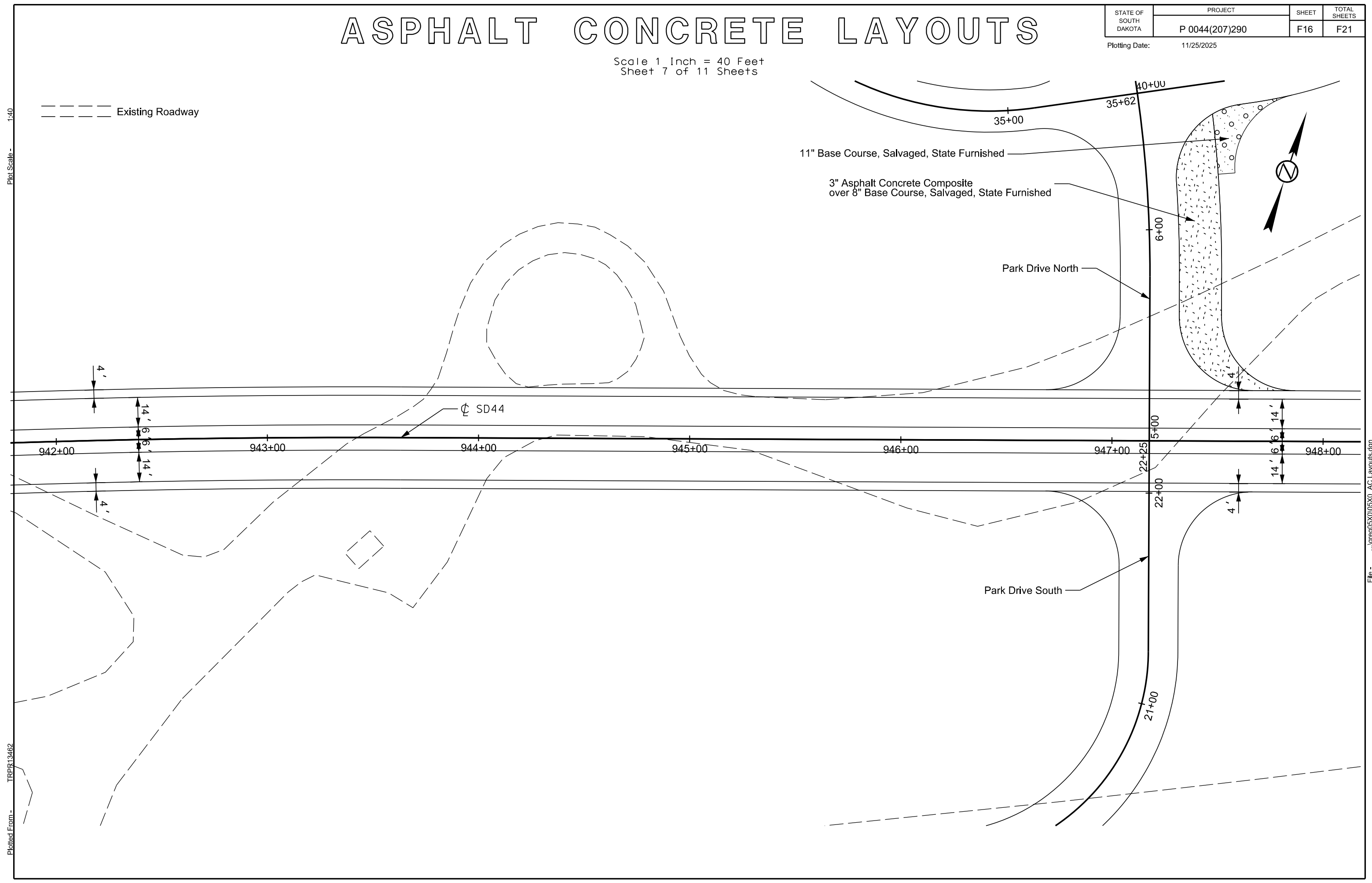
Plotting Date: 11/25/2025

Scale 1 Inch = 40 Feet
Sheet 7 of 11 Sheets

--- Existing Roadway

Plot Scale - 1:40

Plotted From - TRPR13462



File - ...lgreg05X005X0_AC Layouts.dgn

ASPHALT CONCRETE LAYOUTS

STATE OF SOUTH DAKOTA	PROJECT P 0044(207)290	SHEET F17	TOTAL SHEETS F21
-----------------------	---------------------------	--------------	---------------------

Plotting Date: 11/25/2025

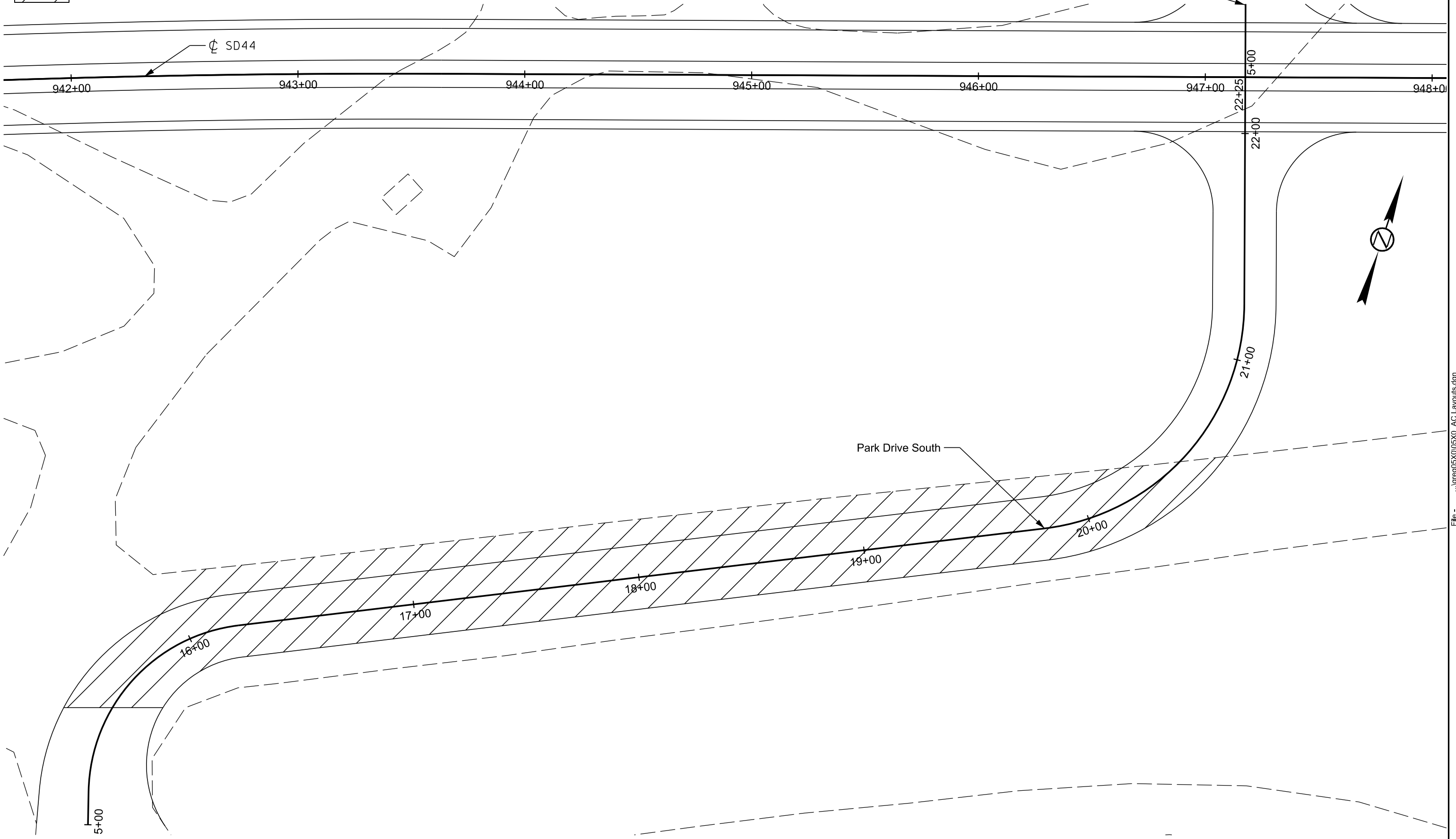
Scale 1 Inch = 40 Feet
Sheet 8 of 11 Sheets

- Existing Roadway
- ▨ Remove Asphalt Concrete Pavement & Unclassified Excavation

Plot Scale - 1:40

Plotted From - TRPR13462

File - ... \greg05X005X0_AC Layouts.dgn



ASPHALT CONCRETE LAYOUTS

Scale 1 Inch = 40 Feet
Sheet 9 of 11 Sheets

STATE OF SOUTH DAKOTA	PROJECT	SHEET	TOTAL SHEETS
	P 0044(207)290	F18	F21
Plotting Date: 11/25/2025			

Plot Scale - 1:40

Plotted From - TRPR13462

Plotted From -

Existing Roadway

Park Drive North

Shop Entrance

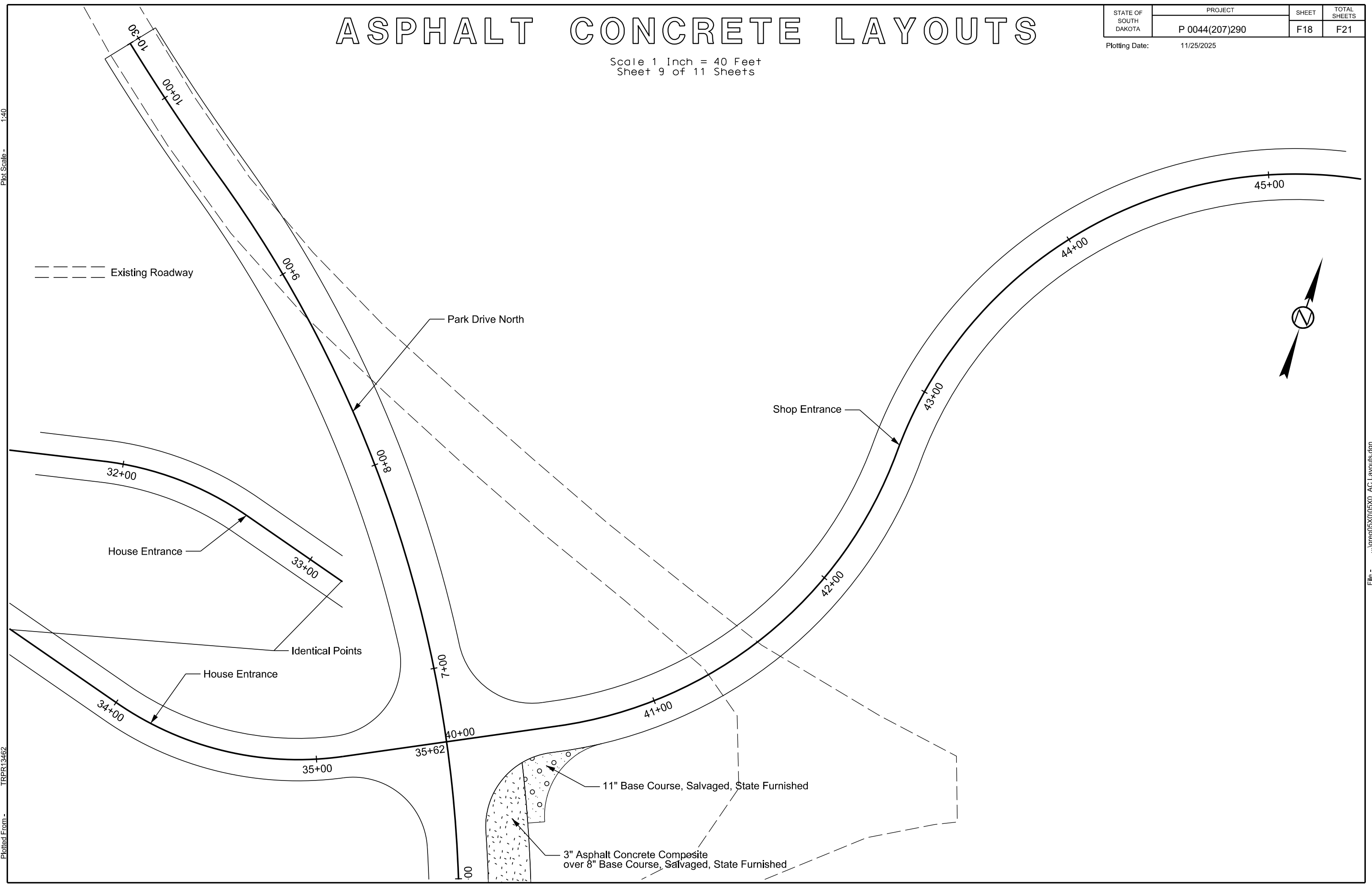
House Entrance

Identical Points

House Entrance

11" Base Course, Salvaged, State Furnished

3" Asphalt Concrete Composite
over 8" Base Course, Salvaged, State Furnished



File - ... \greg05X005X0_AC Layouts.dgn

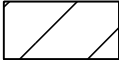
ASPHALT CONCRETE LAYOUTS

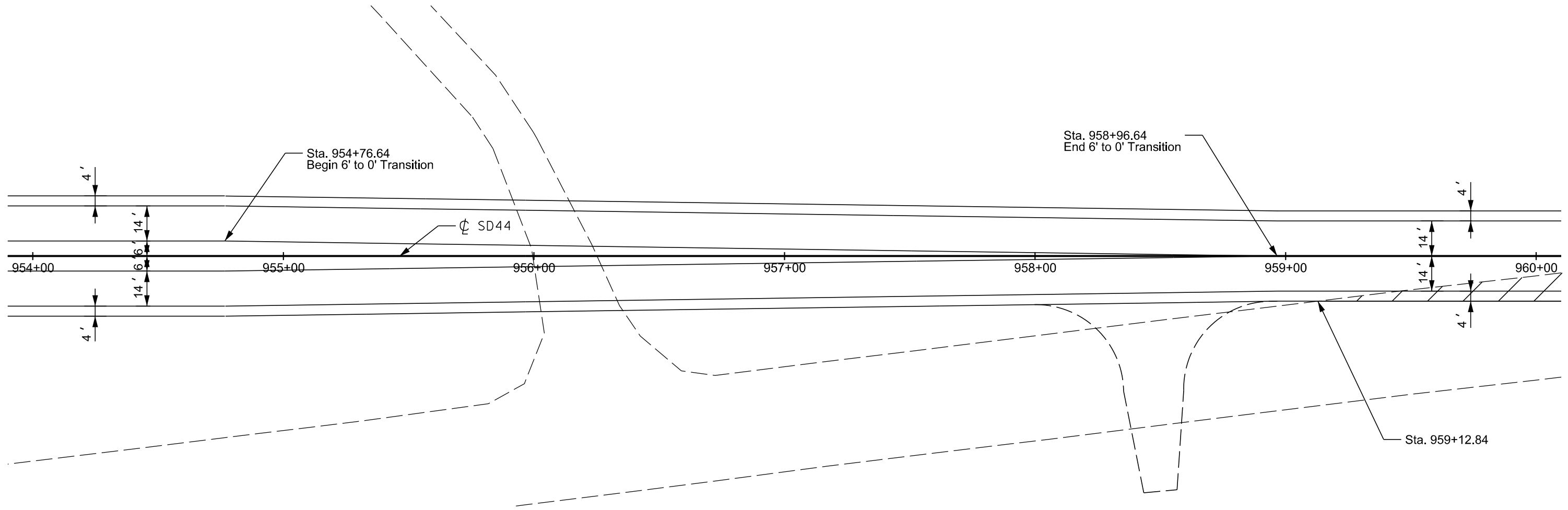
Scale 1 Inch = 40 Feet
Sheet 10 of 11 Sheets

STATE OF SOUTH DAKOTA	PROJECT P 0044(207)290	SHEET F19	TOTAL SHEETS F21
-----------------------	---------------------------	--------------	---------------------

Plotting Date: 11/25/2025

Plot Scale - 1:40

- Existing Roadway
-  Remove Asphalt Concrete Pavement & Unclassified Excavation



Plotted From - TRPR13462

File - ... \greg05X005X0_AC Layouts.dgn

ASPHALT CONCRETE LAYOUTS

Scale 1 Inch = 40 Feet
Sheet 11 of 11 Sheets

STATE OF SOUTH DAKOTA	PROJECT	SHEET	TOTAL SHEETS
	P 0044(207)290	F20	F21
Plotting Date: 11/25/2025			

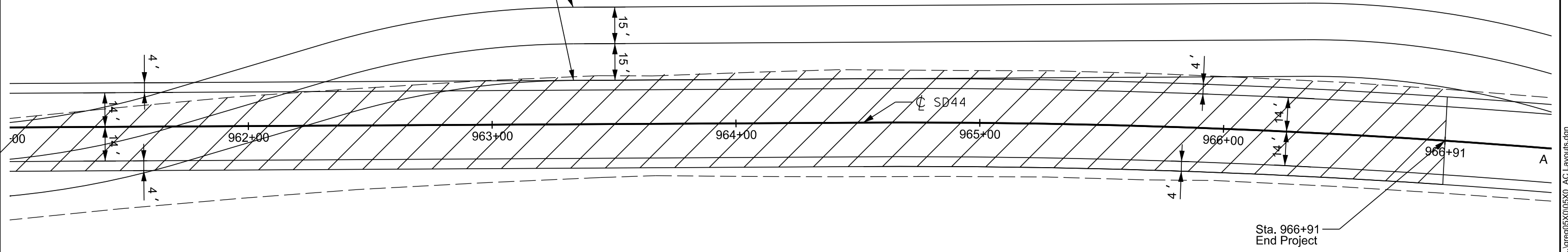
Plot Scale -
1:40

--- Existing Roadway

 Remove Asphalt Concrete Pavement & Unclassified Excavation



Diversion Sta. 960+99 to Sta. a 102+35



Plotted From -
TRPR13462

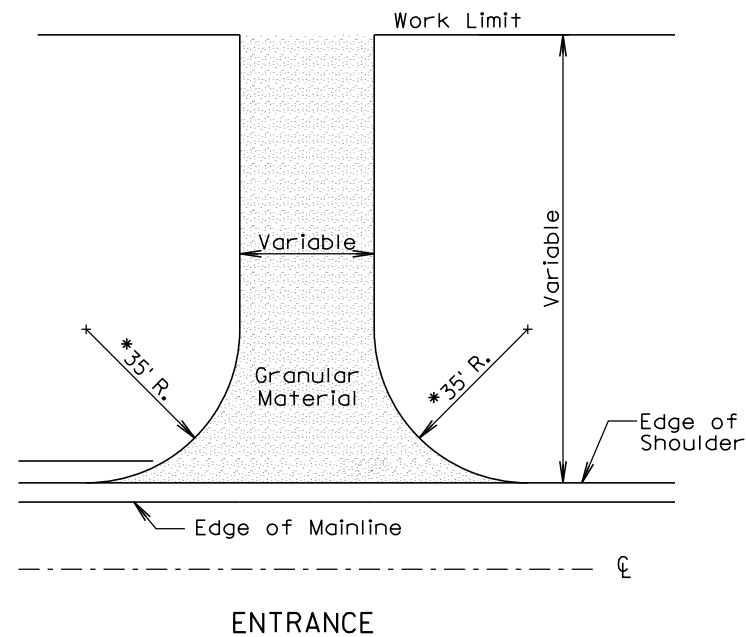
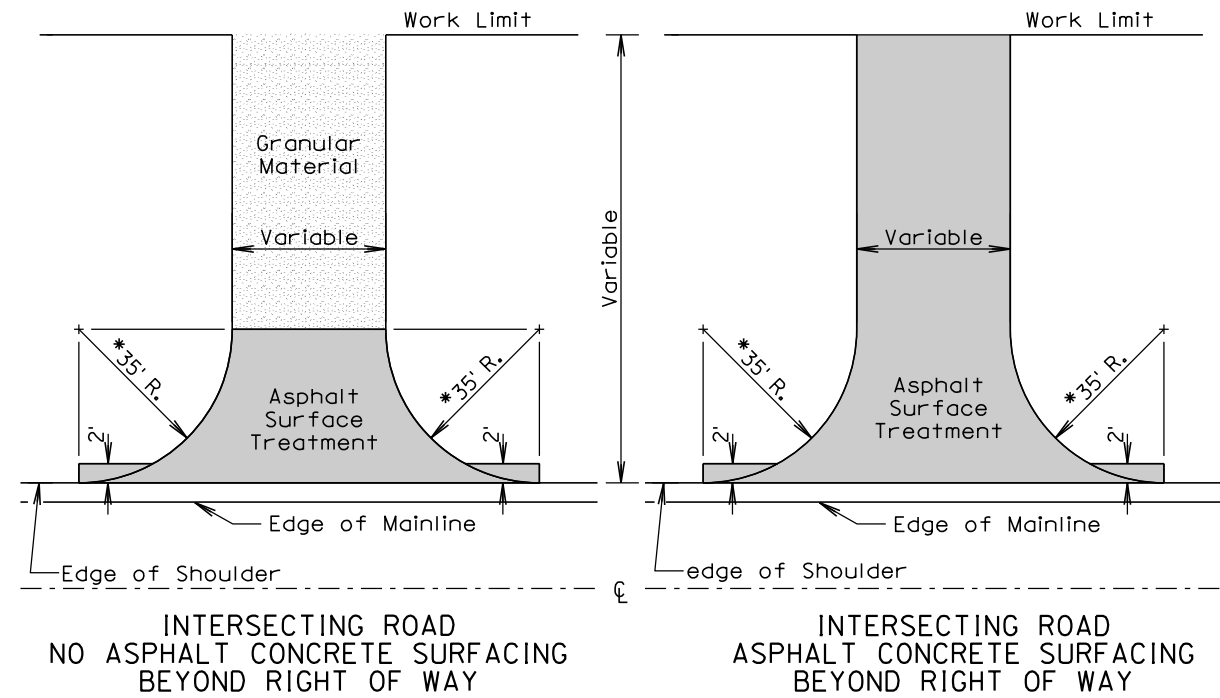
File - ... \greg05X005X0_AC Layouts.dgn

SPECIAL DETAILS

STATE OF SOUTH DAKOTA	PROJECT P 0044(207)290	SHEET F21	TOTAL SHEETS F21
-----------------------	---------------------------	--------------	---------------------

Plotting Date:
11/25/2025

INTERIM SURFACING OF INTERSECTING ROADS AND ENTRANCES



GENERAL NOTES:

The details shown are provided as a guide for surfacing. The precise construction limits for situations other than the standards shown will be determined by the Engineer during construction.

*35' Radius except as noted elsewhere in plans.

PLOT SCALE - 1:200

-PLOTTED FROM - TRPR13462

PLOT NAME - 21

FILE - ... \INT RDS AND ENTS SPECIAL DETAIL.DGN