

STATE OF SOUTH DAKOTA	PROJECT	SHEET	TOTAL SHEETS
	NH-PH 0385(50)96	1	41

Plotting Date: 03/15/2024

STATE OF SOUTH DAKOTA
DEPARTMENT OF TRANSPORTATION

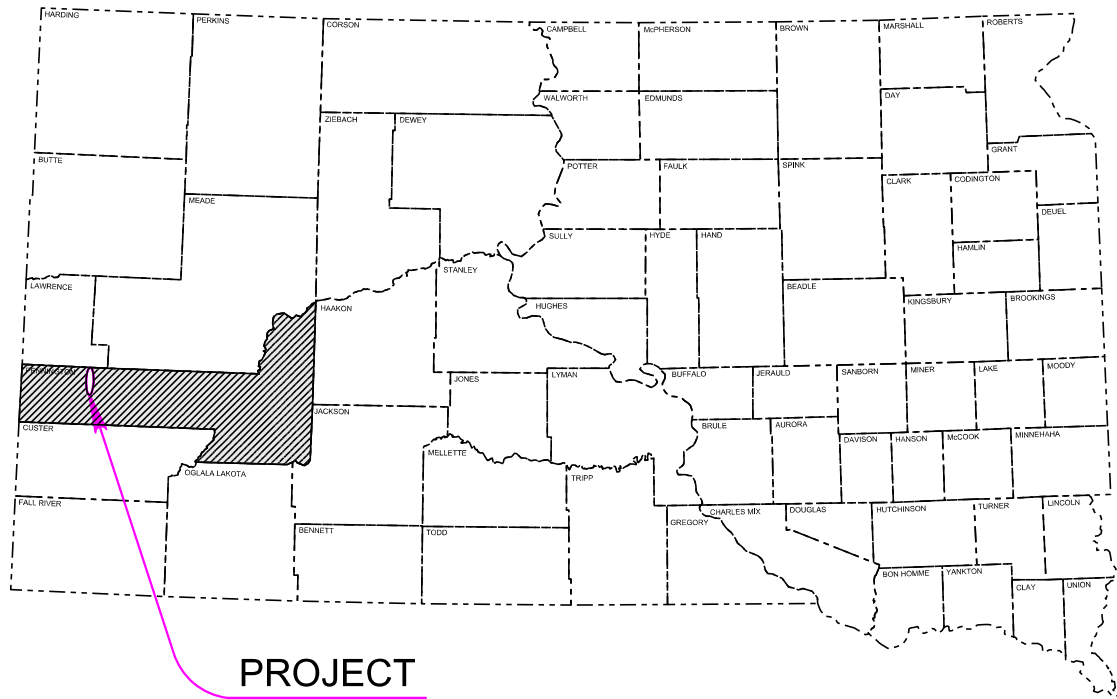
PLANS FOR PROPOSED

PROJECT NH-PH 0385(50)96
US HIGHWAY 385
PENNINGTON COUNTY
ASPHALT CONCRETE SURFACING

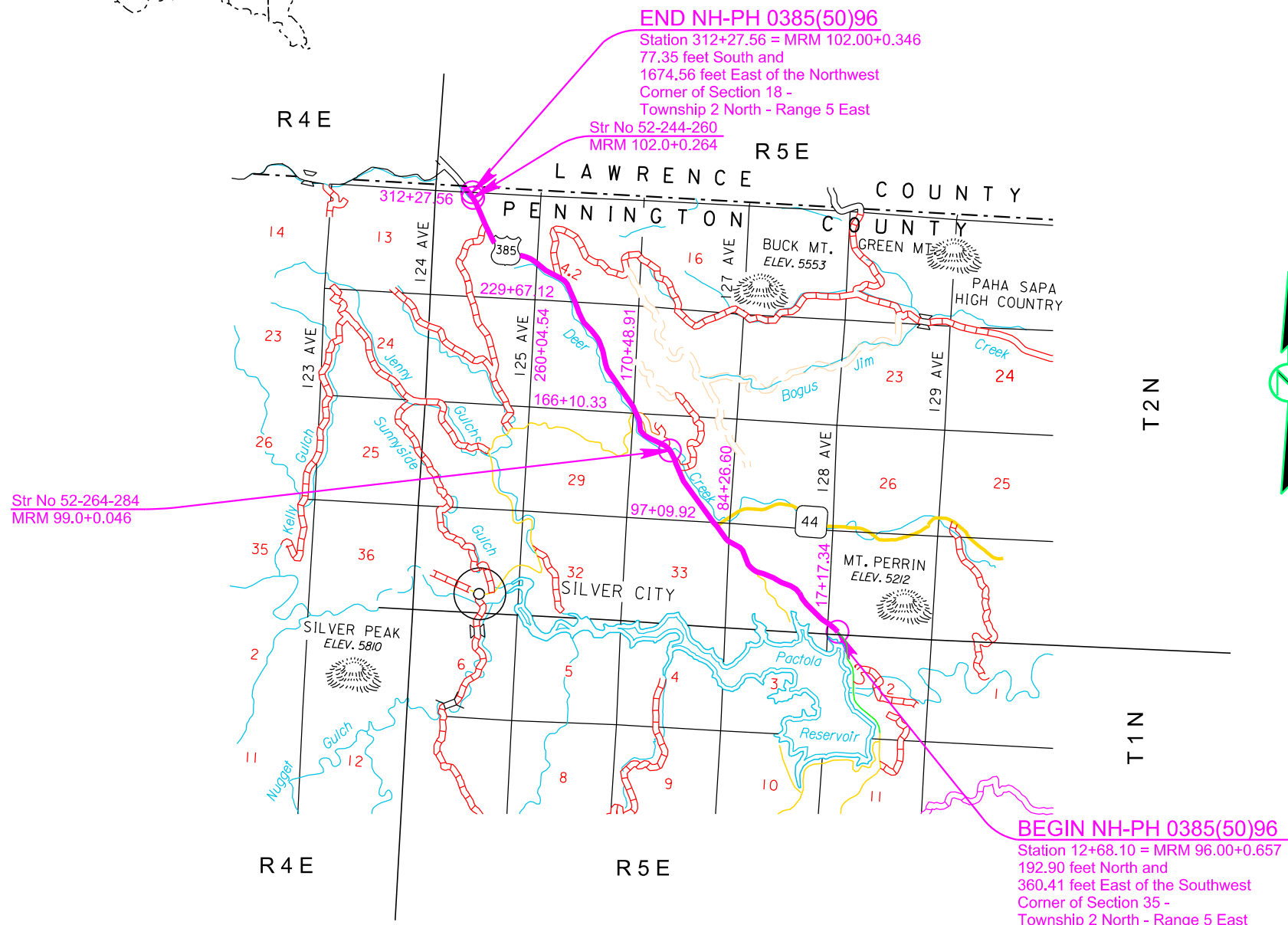
PCN 0694

INDEX OF SECTIONS

- Section A: Estimate of Quantities and Environmental Commitments
- Section C: Traffic Control Plans
- Section D: Erosion and Sediment Control Plans
- Section F: Surfacing Plans
- Section M: Pavement Marking Plans



PROJECT



DESIGN DESIGNATION

ADT (2023)	2192
ADT (2043)	3431
DHV	562
D	51%
T DHV	1.8%
T ADT	4.0%
V	55 MPH

STORM WATER PERMIT

(None Required)

Major Receiving
Body of Water: Pactola Reservoir, Deer Creek
Area Disturbed: 0.0 Acres
Total Project Area: 34.6 Acres
Latitude: 44.0826
Longitude: -103.4932

GROSS LENGTH	29959.46 FEET	5.674 MILES
LENGTH OF EXCEPTIONS	0 FEET	0 MILES
NET LENGTH	29959.46 FEET	5.674 MILES

BEGIN NH-PH 0385(50)96
Station 12+68.10 = MRM 96.00+0.657
192.90 feet North and
360.41 feet East of the Southwest
Corner of Section 35 -
Township 2 North - Range 5 East

6

October 16, 2024

PLOT SCALE - 1:7920

PLOTTED FROM - TRPB15123

FILE - ... \MS\PRJ\PENND694\0694_TITLE.DGN

PLOT NAME - 1

ESTIMATE OF QUANTITIES AND ENVIRONMENTAL COMMITMENTS

STATE OF SOUTH DAKOTA	PROJECT	SHEET	TOTAL SHEETS
	NH-PH 0385(50)96	A1	A3

Plotting Date: 04/09/2024

Revised: 09Apr24, LLR

SPECIFICATIONS

Standard Specifications for Roads & Bridges, 2015 Edition and Required Provisions, Supplemental Specifications, and Special Provisions as included in the Proposal.

Section C – Traffic Control

BID ITEM NUMBER	ITEM	QUANTITY	UNIT
634E0010	Flagging	2,500.0	Hour
634E0020	Pilot Car	500.0	Hour
634E0110	Traffic Control Signs	854.0	SqFt
634E0120	Traffic Control, Miscellaneous	Lump Sum	LS
634E0630	Temporary Pavement Marking	28.4	Mile

Section D – Erosion Control

BID ITEM NUMBER	ITEM	QUANTITY	UNIT
734E0010	Erosion Control	Lump Sum	LS

Section F – Surfacing

BID ITEM NUMBER	ITEM	QUANTITY	UNIT
009E0010	Mobilization	Lump Sum	LS
009E1350	Restoration of Stockpile Site	Lump Sum	LS
009E3320	Checker	Lump Sum	LS
009E4200	Construction Schedule, Category II	Lump Sum	LS
009E4220	Project Management, Category II	Lump Sum	LS
120E0100	Unclassified Excavation, Digouts	284	CuYd
120E6200	Water for Granular Material	15.0	MGal
210E1005	Surface Preparation	1.500	Mile
260E1010	Base Course	1,252.5	Ton
330E0010	MC-70 Asphalt for Prime	49.1	Ton
330E0100	SS-1h or CSS-1h Asphalt for Tack	82.5	Ton
330E0210	SS-1h or CSS-1h Asphalt for Flush Seal	33.1	Ton
330E1000	Blotting Sand for Prime	115.0	Ton
330E2000	Sand for Flush Seal	320.5	Ton
600E0300	Type III Field Laboratory	1	Each
900E0022	Remove and Reset Mailbox	27	Each
900E1980	Storage Unit	1	Each

SECTION F – ESTIMATE OF QUANTITIES – ALTERNATE A

BID ITEM NUMBER	ITEM	QUANTITY	UNIT
320E0005	PG 58-34 Asphalt Binder	1,637.9	Ton
320E1203	Class Q3R Hot Mixed Asphalt Concrete	33,698.1	Ton
320E4000	Hydrated Lime	337.1	Ton

SECTION F – ESTIMATE OF QUANTITIES – ALTERNATE B

BID ITEM NUMBER	ITEM	QUANTITY	UNIT
320E0005	PG 58-34 Asphalt Binder	1,371.8	Ton
320E1203	Class Q3R Hot Mixed Asphalt Concrete	34,603.5	Ton
320E4000	Hydrated Lime	338.3	Ton

Section M – Pavement Marking

BID ITEM NUMBER	ITEM	QUANTITY	UNIT
633E1200	High Build Waterborne Pavement Marking Paint, White	275	Gal
633E1205	High Build Waterborne Pavement Marking Paint, Yellow	296	Gal
633E1272	High Build Waterborne Pavement Marking Paint, Arrow	12	Each
633E1286	High Build Waterborne Pavement Marking Paint, Message	8	Each

INDEX OF SHEETS

A1 Estimate of Quantities for Sections C, D, F and M
 A2 – A3 Environmental Commitments

1:200 Plot Scale -

Plotted From - TRPR15123

File - ...:\p\perm0694\NotesSectionA.dgn

ENVIRONMENTAL COMMITMENTS

The SDDOT is committed to protecting the environment and uses Environmental Commitments as a communication tool for the Engineer and Contractor to ensure that attention is given to avoid, minimize, and/or mitigate an environmental impact. Environmental commitments to various agencies and the public have been made to secure approval of this project. An agency with permitting authority can delay a project if identified environmental impacts have not been adequately addressed. Unless otherwise designated, the Contractor's primary contact regarding matters associated with these commitments will be the Project Engineer. During construction, the Project Engineer will verify that the Contractor has met Environmental Commitment requirements. These environmental commitments are not subject to change without prior written approval from the SDDOT Environmental Office.

Additional guidance on SDDOT's Environmental Commitments can be accessed through the Environmental Procedures Manual found at: <https://dot.sd.gov/media/documents/EnvironmentalProceduresManual.pdf>

For questions regarding change orders in the field that may have an effect on an Environmental Commitment, the Project Engineer will contact the Environmental Engineer at 605-773-3180 or 605-773-4336 to determine whether an environmental analysis and/or resource agency coordination is necessary.

Once construction is complete, the Project Engineer will review all environmental commitments for the project and document their completion.

COMMITMENT B: FEDERALLY THREATENED, ENDANGERED, AND PROTECTED SPECIES

COMMITMENT B2: WHOOPING CRANE

The Whooping Crane is a spring and fall migratory bird in South Dakota that is about 5 feet tall and typically stops on wetlands, rivers, and agricultural lands along their migration route. An adult Whooping Crane is white with a red crown and a long, dark, pointed bill. Immature Whooping Cranes are cinnamon brown. While in flight, their long necks are kept straight and their long dark legs trail behind. Adult Whooping Cranes' black wing tips are visible during flight.

Action Taken/Required:

Harassment or other measures to cause the Whooping Crane to leave the site is a violation of the Endangered Species Act. If a Whooping Crane is sighted roosting in the vicinity of the project, borrow pits, or staging areas associated with the project, cease construction activities in the affected area until the Whooping Crane departs and immediately contact the Project Engineer. The Project Engineer will contact the Environmental Office so that the sighting can be reported to USFWS.

COMMITMENT B4: BALD EAGLE

Bald eagles are known to occur in this area.

Action Taken/Required:

If a nest is observed within one mile of the project site, notify the Project Engineer immediately so that he/she can consult with the Environmental Office for an appropriate course of action.

COMMITMENT B6: MIGRATORY BIRDS WORK RESTRICTION

Migratory birds are known to use the project area for nesting, which primarily occurs from April 1st to July 15th.

Action Taken/Required:

The Contractor is responsible for contracting the services of a qualified biologist for conducting preconstruction migratory bird surveys in suitable

areas that have not been mowed or cleared prior to April 1st to determine if there are current nests and to determine offsetting measures to compensate for impacts to migratory birds. A survey will be conducted annually for each year of construction. Contractor will coordinate the survey findings with the Project Engineer. If any nests are found, appropriate minimization measures will need to be developed in cooperation with the Environmental Office.

Construction activities should not occur in the locations listed in the table below during the migratory bird work restriction without prior approval from the SDDOT Environmental Office to avoid conflicts with nesting migratory birds.

Station	Migratory Bird Restriction
12+50 to 312+50	April 1 to July 15

COMMITMENT E: STORM WATER

Construction activities constitute less than 1 acre of disturbance.

Action Taken/Required:

At a minimum and regardless of project size, appropriate erosion and sediment control measures must be installed to control the discharge of pollutants from the construction site.

STATE OF SOUTH DAKOTA	PROJECT	SHEET NO.	TOTAL SHEETS
	NH-PH 0385(50)96	A3	A3

COMMITMENT H: WASTE DISPOSAL SITE

The Contractor will furnish a site(s) for the disposal of construction and/or demolition debris generated by this project.

Action Taken/Required:

Construction and/or demolition debris may not be disposed of within the Public ROW.

The waste disposal site(s) will be managed and reclaimed in accordance with the following from the General Permit for Construction/Demolition Debris Disposal Under the South Dakota Waste Management Program issued by the Department of Agriculture and Natural Resources.

The waste disposal site(s) will not be located in a wetland, within 200 feet of surface water, or in an area that adversely affects wildlife, recreation, aesthetic value of an area, or any threatened or endangered species, as approved by the Environmental Office and the Project Engineer.

If the waste disposal site(s) is located such that it is within view of any ROW, the following additional requirements will apply:

1. Construction and/or demolition debris consisting of concrete, asphalt concrete, or other similar materials will be buried in a trench separate from wood debris. The final cover over the construction and/or demolition debris will consist of a minimum of 1 foot of soil capable of supporting vegetation. Waste disposal sites provided outside of the Public ROW will be seeded in accordance with Natural Resources Conservation Service recommendations. The seeding recommendations may be obtained through the appropriate County NRCS Office. The Contractor will control the access to waste disposal sites not within the Public ROW with fences, gates, and placement of a sign or signs at the entrance to the site stating, "No Dumping Allowed".
2. Concrete and asphalt concrete debris may be stockpiled within view of the ROW for a period not to exceed the duration of the project. Prior to project completion, the waste will be removed from view of the ROW or buried, and the waste disposal site reclaimed as noted above.

The above requirements will not apply to waste disposal sites that are covered by an individual solid waste permit as specified in SDCL 34A-6-58, SDCL 34A-6-1.13, and ARSD 74:27:10:06.

Failure to comply with the requirements stated above may result in civil penalties in accordance with South Dakota Solid Waste Law, SDCL 34A-6-1.31.

All costs associated with furnishing waste disposal site(s), disposing of waste, maintaining control of access (fence, gates, and signs), and reclamation of the waste disposal site(s) will be incidental to the various contract items.

COMMITMENT I: HISTORIC PRESERVATION OFFICE CLEARANCES

The SDDOT has obtained concurrence with the State Historic Preservation Office (SHPO) for all work included within the project limits and all department designated sources and designated option material sources, stockpile sites, storage areas, and waste sites provided within the plans.

Action Taken/Required:

All earth disturbing activities not designated within the plans require a cultural resource review prior to scheduling the pre-construction meeting. This work includes but is not limited to: Contractor furnished material sources, material processing sites, stockpile sites, storage areas, plant sites, and waste areas.

The Contractor will arrange and pay for a record search and when necessary, a cultural resource survey. The Contractor has the option to contact the state Archaeological Research Center (ARC) at 605-394-1936 or another qualified archaeologist, to obtain either a records search or a cultural resources survey. A record search might be sufficient for review if the site was previously surveyed; however, a cultural resources survey may need to be conducted by a qualified archaeologist.

The Contractor will provide ARC with the following: a topographical map or aerial view in which the site is clearly outlined, site dimensions, project number, and PCN. If applicable, provide evidence that the site has been previously disturbed by farming, mining, or construction activities with a landowner statement that artifacts have not been found on the site.

The Contractor will submit the cultural resources survey report to SDDOT Environmental Office, 700 East Broadway Avenue, Pierre, SD 57501-2586. SDDOT will submit the information to the appropriate SHPO/THPO. Allow **30 Days** from the date this information is submitted to the Environmental Engineer for SHPO/THPO review.

In the event of an inadvertent discovery of human remains, funerary objects, or if evidence of cultural resources is identified during project construction activities, then such activities within 100 feet of the inadvertent discovery will immediately cease and the Project Engineer will be immediately notified. The Project Engineer will contact the SDDOT Environmental Office, who will contact the appropriate SHPO/THPO within 48 hours of the discovery to determine an appropriate course of action.

SHPO/THPO review does not relieve the Contractor of the responsibility for obtaining any additional permits and clearances for Contractor furnished material sources, material processing sites, stockpile sites, storage areas, plant sites, and waste areas that affect wetlands, threatened and endangered species, or waterways. The Contractor will not utilize a site known or suspected of having contaminated soil or water. The Contractor will provide the required permits and clearances to the Project Engineer at the preconstruction meeting.