

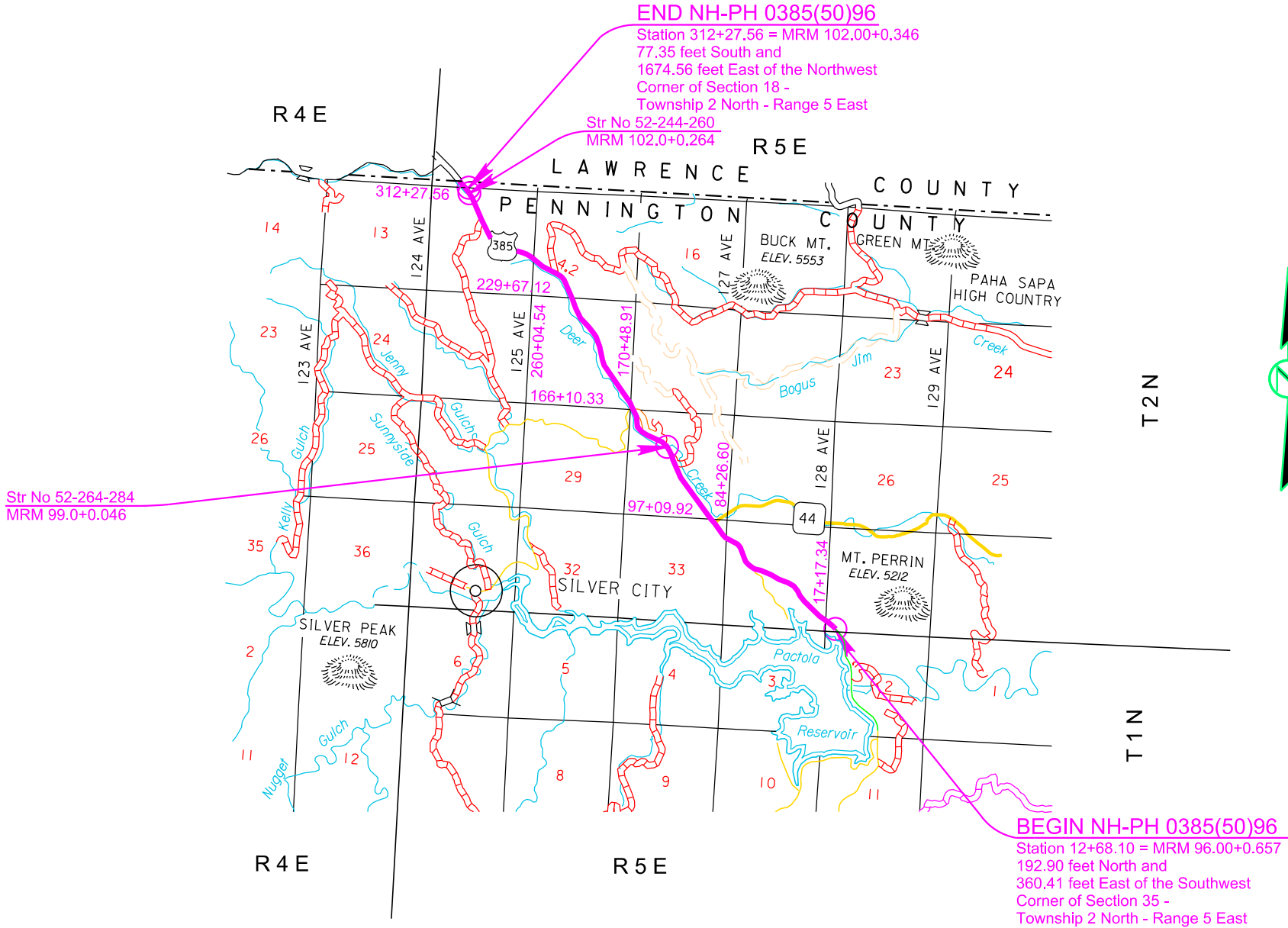
SECTION D: EROSION AND SEDIMENT CONTROL PLANS

STATE OF SOUTH DAKOTA	PROJECT	SHEET	TOTAL SHEETS
	NH 0385(59)96	D1	D5

Plotting Date: 03/13/2024

INDEX OF SHEETS

- D1 General Layout with Index
- D2-D3 Estimate with General Notes and Tables
- D4 Dewatering and Sediment Collection System Details
- D5 SDDOT Construction Entrance Details



SECTION D ESTIMATE OF QUANTITIES

BID ITEM NUMBER	ITEM	QUANTITY	UNIT
734E0010	Erosion Control	Lump Sum	LS

EROSION CONTROL

The estimated area requiring erosion control is less than 1 Acre. All costs for the erosion control work for furnishing, placing, and maintaining erosion control including equipment, labor, seeding, fertilizing, and Fiber Reinforced Matrix will be incidental to the contract lump sum price for "Erosion Control".

The limits of erosion control work will be determined by the Engineer during construction.

Mycorrhizal Inoculum

Mycorrhizal inoculum will consist of mycorrhizal fungi spores and mycorrhizal fungi-infected root fragments in a solid carrier. The carrier may include organic materials, calcinated clay, or other materials consistent with application and good plant growth. The supplier will provide certification of the fungal species claimed and the live propagule count. The inoculum will include a minimum 25% the fungal species *Rhizophagus intraradices*. The remaining 75% may include other endomycorrhizal fungal species.

All seed will be inoculated by the seed supplier with a minimum of 100,000 live propagules of mycorrhizal fungi per acre. All costs of inoculating the seed will be incidental to the contract unit price per pound for the corresponding permanent seed mixture.

The mycorrhizal inoculum will be as shown below or an approved equal:

<u>Product</u>	<u>Manufacturer</u>
MycoApply	Mycorrhizal Applications, Inc. Grants Pass, OR Phone: 1-866-476-7800 www.mycorrhizae.com
AM 120 Multi Species Blend	Reforestation Technologies Int. Gilroy, CA Phone: 1-800-784-4769 www.reforest.com
LALRISE Prime and Max WP	Lallemand Specialties Inc. Milwaukee, WI Phone: 1-844-590-7781 www.lallemandplantcare.com

Fertilizing

The Contractor will apply an all-natural slow-release fertilizer prior to seeding or placing sod. The all-natural fertilizer will have a minimum guaranteed analysis of 4-4-4 and be USDA Certified BioBased. It should provide a minimum of 4% (N) nitrogen with a minimum water insoluble nitrogen (WIN) fraction of 2.07%, a minimum of 4% (P2O5) available phosphate, a minimum of 4% (K2O) soluble potash, and a maximum carbon to nitrogen ratio (C:N ratio) of 5:1. The all-natural fertilizer will be free of weed-seed and pathogens accomplished through thermophilic composting, and not mechanical or chemical sterilization, to assure presence of beneficial soil microbiology. The fertilizer will have a near neutral pH, a low salt index, a low biological oxygen demand, contain organic humic and fulvic acids, and have high aerobic organism counts. The fertilizer will also be stable, free of bad odors, and be unattractive as a food source for animals. It should also be in a granular form that is easily spread.

The fertilizer will be applied at a rate of 1,000 pounds per acre in accordance with the manufacturer's recommended method of application.

The all-natural slow-release fertilizer will be as shown below or an approved equal:

<u>Product</u>	<u>Manufacturer</u>
Sustane	Sustane Corporate Headquarters Cannon Falls, Minnesota Phone: 1-800-352-9245 www.sustane.com
Perfect Blend	Perfect Blend, LLC Bellevue, WA Phone: 1-866-456-8890 www.perfect-blend.com
Nature Safe	Nature Safe Fertilizers Irving, TX Phone: 1-605-759-5622 www.naturesafe.com

Fiber Reinforced Matrix

Fiber Reinforced Matrix will be applied to any area that requires permanent seeding.

Fiber Reinforced Matrix will be applied in a separate operation following permanent seeding at locations determined by the Engineer during construction. The application rate is 3,000 pounds per acre.

The contractor will use a Fiber Reinforced Matrix from the approved products list, or an approved equal. The approved product list for Fiber Reinforced Matrix may be viewed at the following internet site.

<http://apps.sd.gov/HC60ApprovedProducts/main.aspx>

STATE OF SOUTH DAKOTA	PROJECT NH 0385(59)96	SHEET D2	TOTAL SHEETS D5
-----------------------	--------------------------	-------------	--------------------

Plotting Date: 03/13/2024

Permanent Seeding

The areas to be seeded consist of all newly graded areas within the project limits except for the top of roadways and temporary easements under cultivation.

Special Permanent Seed Mixture 1 will consist of the following:

Grass Species	Variety	Pure Live Seed (PLS) (Pounds/Acre)
Western Wheatgrass	Arriba, Flintlock, Rodan, Rosana, Walsh	6.0
Green Needlegrass	Lodorm, AC Mallard Ecovar	4.0
Sideoats Grama	Butte, Pierre	2.0
Blue Grama	Bad River	2.0
Canada Wildrye	Mandan	2.0
Wildflowers		
Common Yarrow (<i>Achillea millefolium</i>)		0.5
Black-eyed Susan (<i>Rudbeckia hirta</i>)		0.5
Prairie Smoke (<i>Geum triflorum</i>)		0.5
Blue Flax (<i>Linum lewisii</i>)		0.5
Wild Bergamot (<i>Monarda fistulosa</i>)		0.5
Blanket Flower (<i>Gaillardia aristata</i>)		0.5
Wild Lupine (<i>Lupinus perennis</i>)		0.5
Pale Purple Coneflower (<i>Echinacea angustifolia</i>)		0.5
Total:		20.0

Dewatering And Sediment Collecting

The Contactor has the option to treat sediment laden water trapped within the project limits or the Contractor may elect to transport sediment laden water off the project. Refer to the OPTIONS FOR DEWATERING AND SEDIMENT COLLECTING detail sheet for more information.

Water transported off the project limits will not be disposed of in an area where it can enter a waterway. The disposal site must be approved by the Engineer.

Separate payment will not be made for any Dewatering and Sediment Collection efforts. All costs involved with necessary Dewatering and Sediment Collection efforts will be incidental to other contract items

Construction Entrance

The Contractor will install a Construction Entrance at locations where there is a potential for mud tracking and sediment flow from the construction site and work area onto a paved public roadway.

It is the Contractor's option to use the SDDOT Construction Entrance (See SDDOT Construction Entrance notes and details), a product from the list provided in these notes, or other products or processes as approved by the Engineer during construction.

If the Contractor elects to use one of the products listed in the table, then the Contractor will install the construction entrance product in accordance with the manufacturer's installation instructions or as directed by the Engineer.

The Contractor will maintain the construction entrance such that mud tracking and sediment flow will not enter the roadway or adjacent drainage areas. The construction entrance will be routinely inspected, and the Contractor will repair or replace material as deemed necessary by the Engineer.

The following table is a list of known construction entrance products available for use:

<u>Product</u>	<u>Manufacturer</u>
Grizzly Rumble Grate (10' width and 24' length required)	Trackout Control, LLC Tempe, AZ Phone: 1-800-761-0056 www.trackoutcontrol.com
Pro Grid (12' width and 24' length including combination of grids and ramps required)	Pro-Tec Equipment, Inc. Charlotte, MI Phone: 1-800-292-1225 www.pro-tecequipment.com
Tracking Pad (12' width and 24' length (2 – 12'x12' pads) and 2 – 4'x4' turning flares)	Tracking Pads LLC Commerce City, CO Phone: 1-303-501-5640 www.trackingpads.com
FODS Trackout Control Mat (12' width and 5 mats to get a 35' length)	FODS, LLC Denver, CO Phone: 1-844-200-3637 http://www.getfods.com
DuraDeck and MegaDeck HD An adequate quantity is needed to prevent tires from becoming muddy (does not remove mud)	Signature Systems Group, LLC Flower Mound, TX Phone: 1-800-931-7301 https://www.signature-systems.com/
Track-Out Control Mat (10' width and 24' length required)	RubberForm Recycled Products, LLC Lockport, NY Phone: 1-716-478-0408 www.rubberform.com

SDDOT Construction Entrance

If the SDDOT Construction Entrance is utilized, then the Contractor will install the SDDOT Construction Entrance in accordance with these notes and the detail drawings.

Pit run material will be obtained from a granular source and will conform to the following gradation:

<u>Sieve Size</u>	<u>Percent Passing</u>
6"	100%
#4	0-60%
#200	0-20%

The pit run material will be compacted to the satisfaction of the Engineer.

The aggregate for the granular material will conform to the following gradation requirements:

<u>Sieve Size</u>	<u>Percent Passing</u>
3"	100%
2 1/2"	90-100%
1 1/2"	25-60%
3/4"	0-10%
1/2"	0-5%

The granular material will be placed in 6" maximum lifts.

It is anticipated that the granular material will need to be periodically removed and replaced as it becomes inundated with mud and sediment.

The Reinforcement Fabric (MSE) will be in conformance with Section 831 of the Specifications. The Reinforcement Fabric (MSE) will be on the Approved Products List for this material or will be certified by the supplier to meet this specification prior to installation.

The Reinforcement Fabric (MSE) should be kept as taut as possible prior to placing.

Equipment will not be allowed on the Reinforcement Fabric (MSE) until the first lift of granular material is in place.

All seams in the Reinforcement Fabric (MSE) will be overlapped at least 2' and shingled.

OPTIONS FOR DEWATERING AND SEDIMENT COLLECTING

STATE OF SOUTH DAKOTA	PROJECT NH 0385(59)96	SHEET D4	TOTAL SHEETS D5
-----------------------	--------------------------	-------------	--------------------

Plotting Date: 03/13/2024

OPTIONS ARE NOT LIMITED TO WHAT IS SHOWN ON THIS SHEET

NO MATTER THE SYSTEM OR METHOD USED, THE CONTRACTOR MUST MEET THE TERMS OF THE TEMPORARY DISCHARGE PERMIT AND THE STORMWATER PERMIT FOR CONSTRUCTION ACTIVITIES.

Various systems, devices, and products are shown on this sheet to give the Contractor ideas of what may be used for water treatment. Other systems, devices, and products are available and can be used with approval from the Engineer.

The Contractor may elect to block a portion of storm sewer near the outfall with sand bags and pump the water out to be treated with a flocculent or allow the water to set in a lined dumpster until sediment to falls out of suspension before discharging the water. Drop inlet protection devices could also be used as part of a treatment train. The Contractor may pump dirty water into a hydroseeder and mix it with a flocculent, and spray the mixture back onto a sediment pond.

PURPOSE

The purpose of a dewatering and sediment collection system is to collect turbid storm water on the project, treat it with flocculents as needed, and capture the sediment that falls out of suspension before the water is discharged into "Waters of the US" or "Waters of the State". Refer to the Environmental Commitments for the specific requirements for each body of water on this project.

The Contractor will need to create a Pollution Prevention Plan (PPP) for dewatering and sediment collection if the Contractor chooses to discharge the water into "Waters of the US" or "Waters of the State" instead of disposing of the water off-site, using it for irrigation, or using it for hydroseeding. The Contractor will also need to obtain a Temporary Discharge Permit from the South Dakota Department of Agriculture & Natural Resources (DANR) on all projects outside of Indian Reservation boundaries.

Suggestions for dewatering and sediment collection may be shown on the plan sheets. It is the Contractor's responsibility to dewater and collect sediment. The Contractor will have to intercept and treat the stormwater before storm sewer outfalls into "Waters of the US" or "Waters of the State". The Contractor may need more than one dewatering and sediment collection system to capture and treat stormwater at multiple outfalls and/or locations simultaneously during each phase of the project.

PAYMENT

No additional payment will be made for Dewatering and Sediment Collecting. Dewatering and Sediment Collecting will be incidental to other items on the project.

DEWATERING BAGS AND SOCKS capture sediment and should be placed on pavement, vegetated areas, or gravel.

Dandy Dewatering Bag
Dandy Products, Inc.
Powell, OH
Phone: 1.800.591.2284
www.dandyproducts.com

Non-woven Sediment Filter Bags
Indian Valley Industries, Inc.
Johnson City, NY
Phone: 1.800.659.5111
www.iviindustries.com

Taurus Dewatering Bags/Socks
SolHuTec Group, Inc.
Sebastian, FL
Phone: 1.888.703.9889
www.solhutec.com

Ultra-Dewatering Bag
UltraTech International, Inc
Jacksonville, FL
Phone: 1.800.764.9563
www.spillcontainment.com

Heavy Duty Dirtbag 55
ACF Environmental
Richmond, VA
Phone: 1.800.223.9021
www.acfenvironmental.com

Pump-It Tube
Flo-Water, LLC
West Des Moines, IA
Phone: 1.515.577.6763
www.flo-water.net

FLOCCULENTS listed below are considered to be safe for the environment, if used as directed:

APS 700 Series Floc Logs
Applied Polymer Systems, Inc.
Woodstock, GA
Phone: 1.866.200.9868
http://www.siltstop.com

Floc, Floc Soc, Floc Bag
Innovative Turf Solutions Products
Cincinnati, OH
Phone: 1.513.317.8311
http://www.innovativeturf.com

Biostar CH
Hild & Associates, Inc.
Stillwater, MN
Phone: 1.715.426.5131
www.biostar-ch.com

Terra-Tubes
ACF Environmental
Buffalo Grove, IL
Phone: 1.800.366.1180
www.terratubes.com

FI-3500 Tablets
JRM Chemical, Inc.
Cleveland, OH
Phone: 1.216.475.8488
http://www.soilmoist.com

Tigerfloc
Floc Systems Inc.
Surrey, British Columbia
Phone: 1.604.343.2046
www.flocsystems.com

PORTABLE FLOCCULENT SYSTEMS

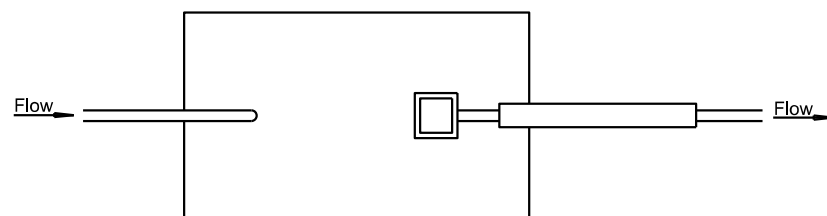
Eco Pond Rescue Water Wagon
Eco Pond Rescue LLC
Seminole, Florida
Phone: 1.727.412.4323
www.ecopondrescue.com

WTS2000 Portable Sediment Tank
Aqualet Industries, LLC
Ocean, New Jersey
Phone: 1.732.695.6336
http://aqualetindustries.com

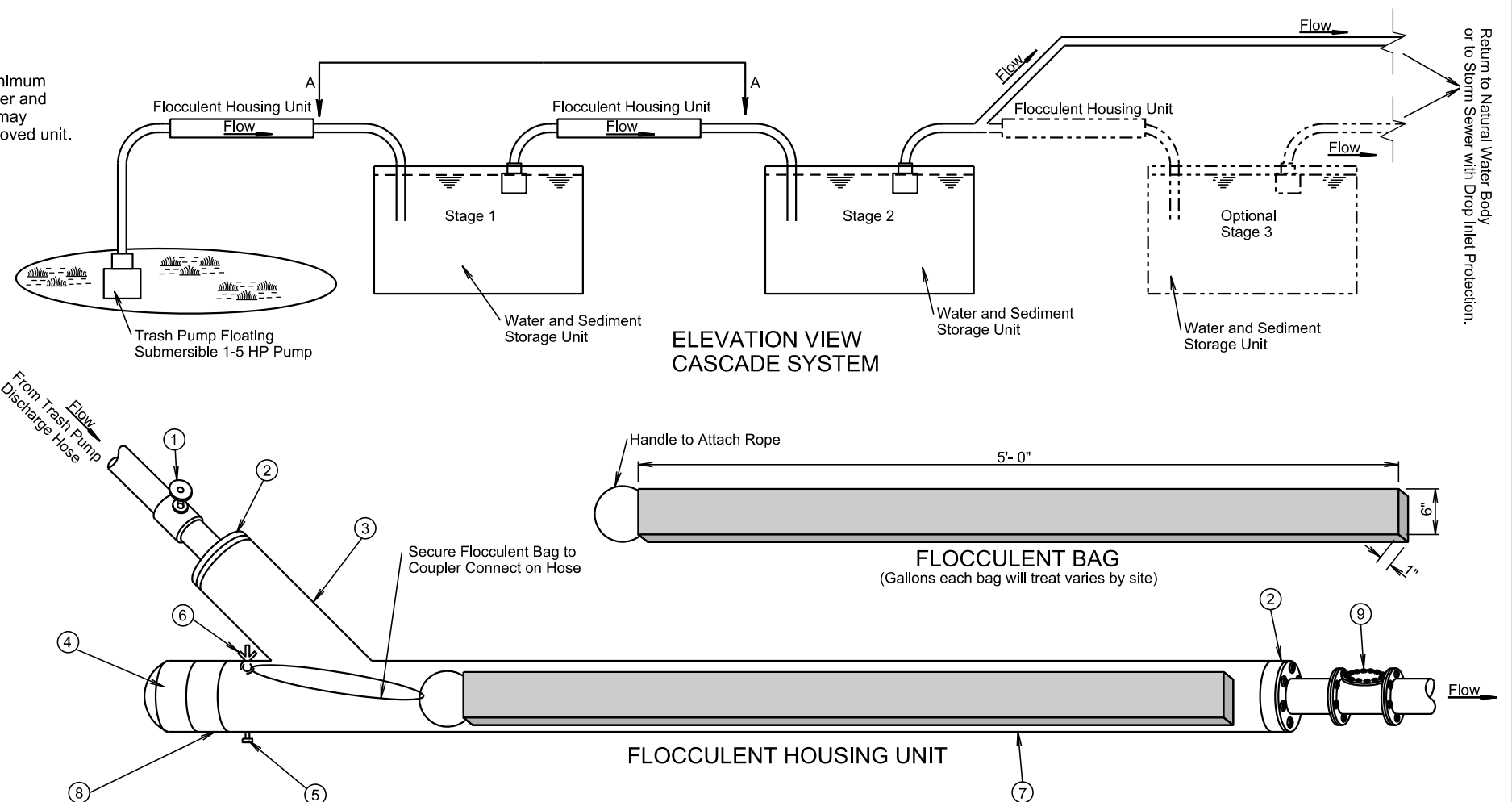
Dry Flocculent Mixing System
Innovative Equipment Solutions
Hot Springs, Arkansas
Phone: 1.501.525.8484
http://www.neptunewash.com

THE CASCADE SYSTEM

The cascade system is shown below and to the right for conceptual purposes only; however, the cascade system will at a minimum incorporate the use of 2 flocculent housing units and 2 water and sediment storage units. Design and construction of the water and sediment storage units are project site specific and will be the Contractor's responsibility. A water and sediment storage unit may consist of a storage bin lined with plastic, the bed of a dump truck lined with plastic, a sediment basin, or other Engineer approved unit. The treatment flocculent bag may be from the list or an approved equal.



VIEW A-A



ELEVATION VIEW CASCADE SYSTEM

FLOCCULENT HOUSING UNIT (estimated quantities for information only)			
NO.	DESCRIPTION	QUANTITY	UNIT
1	4" or 6" Dia. Sch. 40 Gate Valve	1	Each
2	4" X 6" or 6" X 8" Sch. 40 PVC Bushing	2	Each
3	6" or 8" Dia. Sch. 40 PVC "Y"	1	Each
4	6" or 8" Dia. Sch. 40 PVC Female Threaded Cap	1	Each
5	1" Dia. Sch. 80 PVC Drain Valve	1	Each
6	1/2" Eye Bolt with Wing Nut and Rubber Gromets	1	Each
7	6" or 8" Dia. Sch. 40 PVC Pipe	10	Ft.
8	6" or 8" Dia. Sch. 40 PVC Male Adapter	1	Each
9	4" or 6" Dia. Sch. 40 PVC Swing Check Valve	1	Each

FLOW RATE ESTIMATE	
Pump Type	Flow Rate (gpm)
2"	50-250
3" Gas	250-350
4" Diesel	500-750
6" Diesel	750-1000

Plot Scale - 1:300

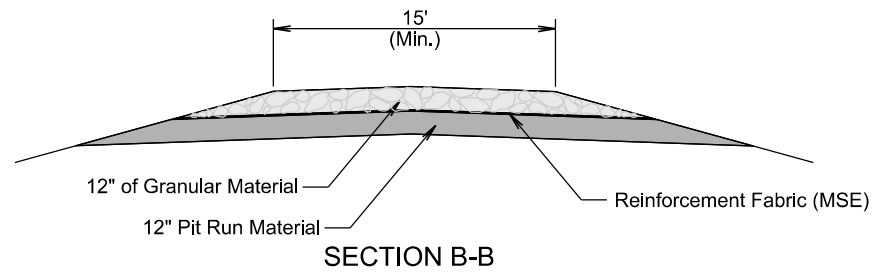
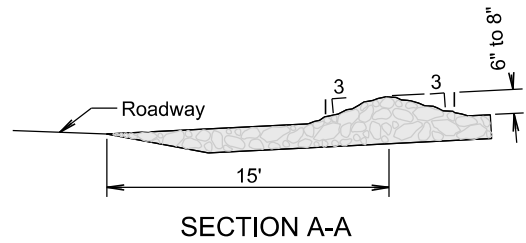
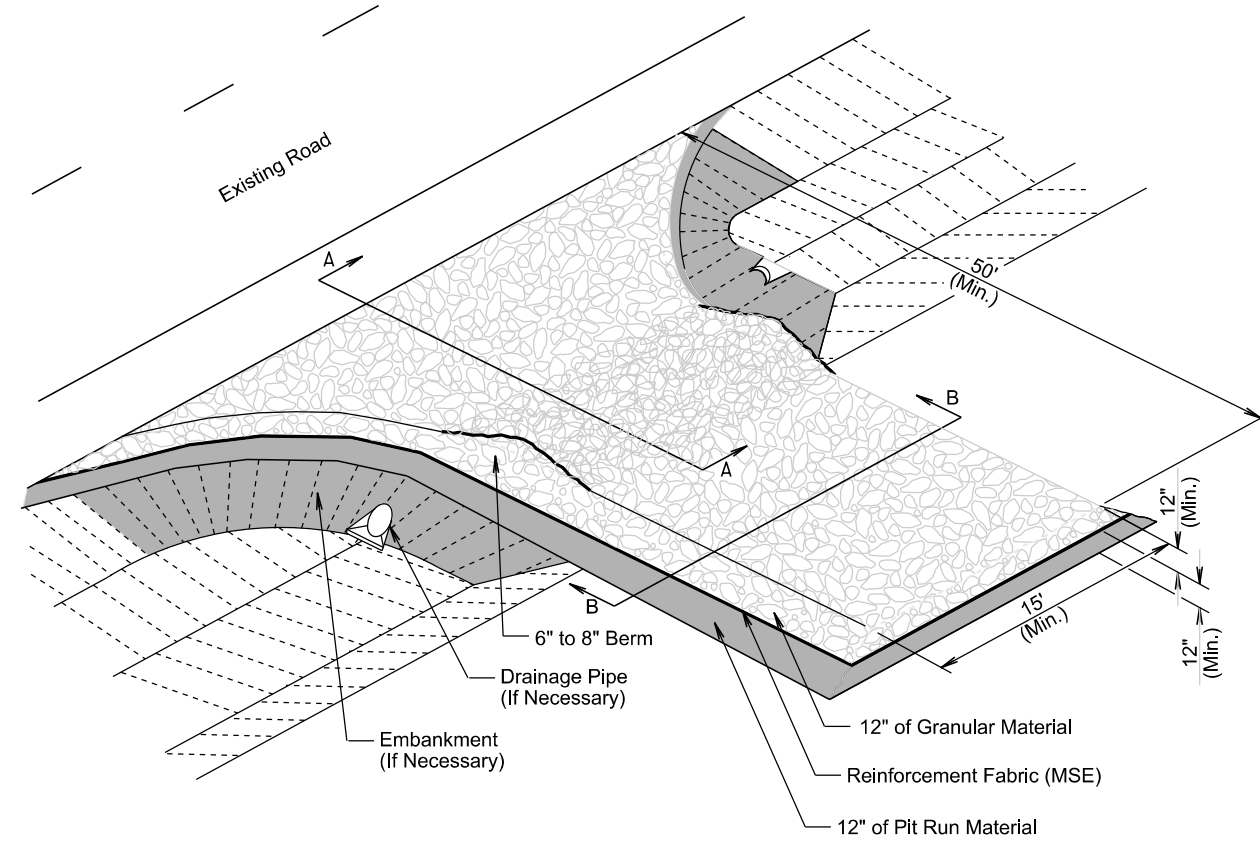
Plotted From - TRPR13525

File - ...:\rd\p13525\13525.dwg

SDDOT CONSTRUCTION ENTRANCE

STATE OF SOUTH DAKOTA	PROJECT NH 0385(59)96	SHEET D5	TOTAL SHEETS D5
-----------------------	--------------------------	-------------	--------------------

Plotting Date: 03/13/2024



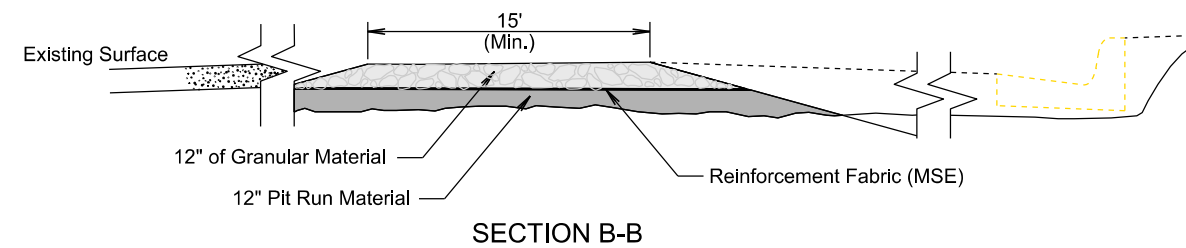
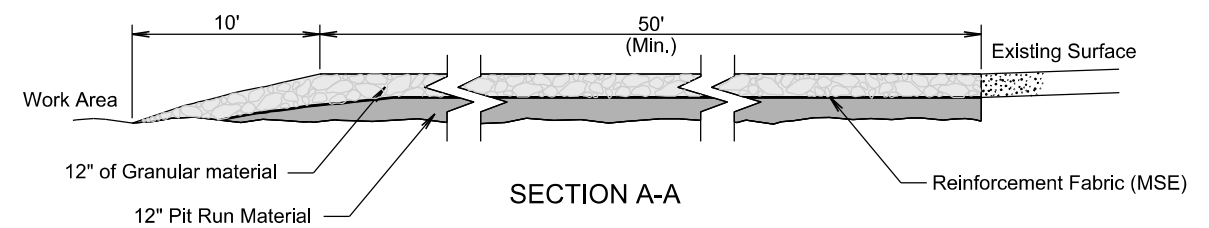
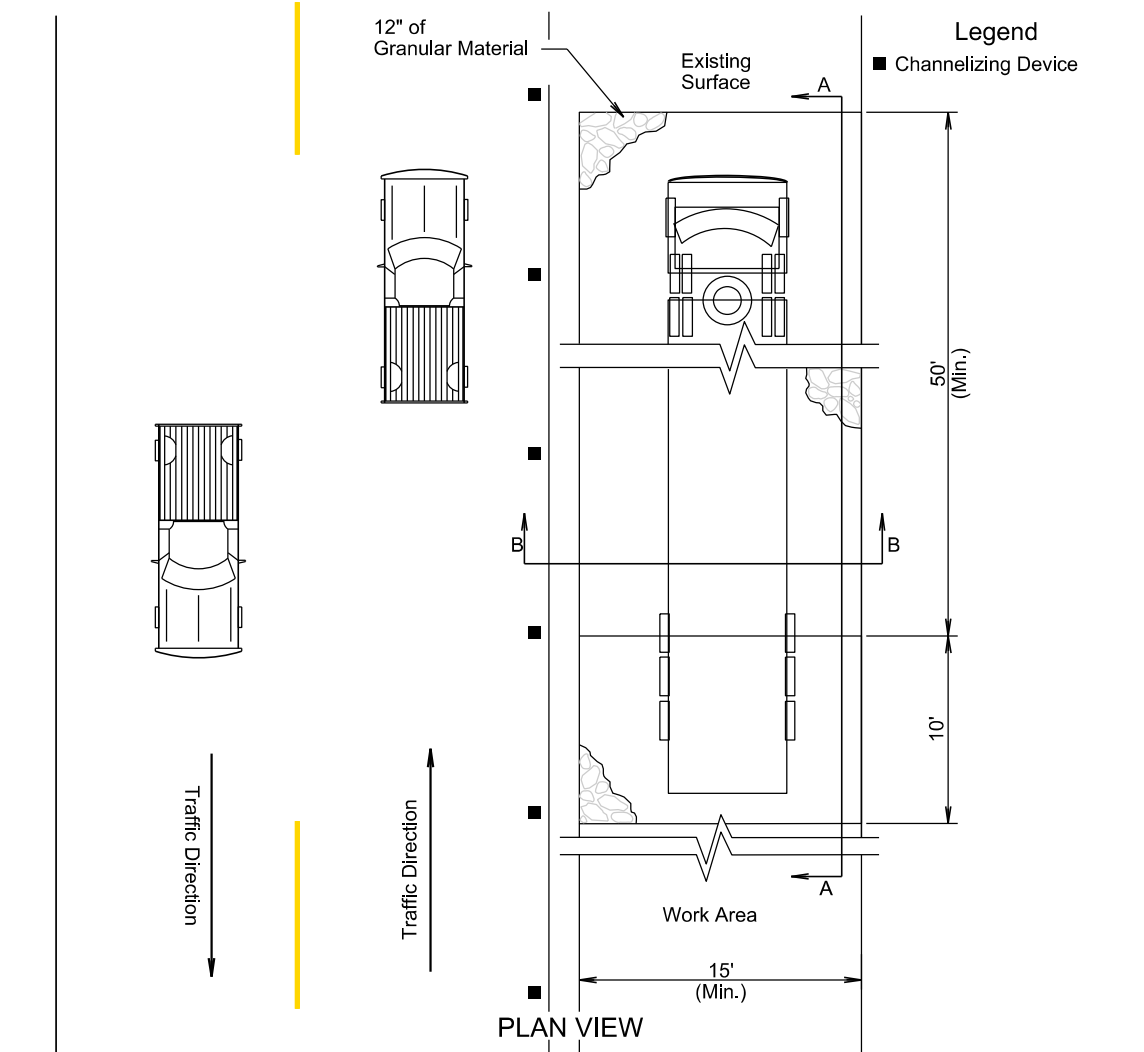
GENERAL NOTES:

If the grade of the entrance slopes down to the roadway, a berm of extra rock will be used to prevent sediment or mud from being deposited on the roadway. See SECTION A-A.

If a drainage pipe is necessary the size and type will be determined by the Contractor to meet field conditions. All cost will be incidental to the various contract items.

If embankment is necessary it will be pit run material.

TRANSVERSE TO ROADWAY



PARALLEL TO ROADWAY