

STATE OF SOUTH DAKOTA
DEPARTMENT OF TRANSPORTATION
PLANS FOR PROPOSED

Revised: 3/4/25 MD

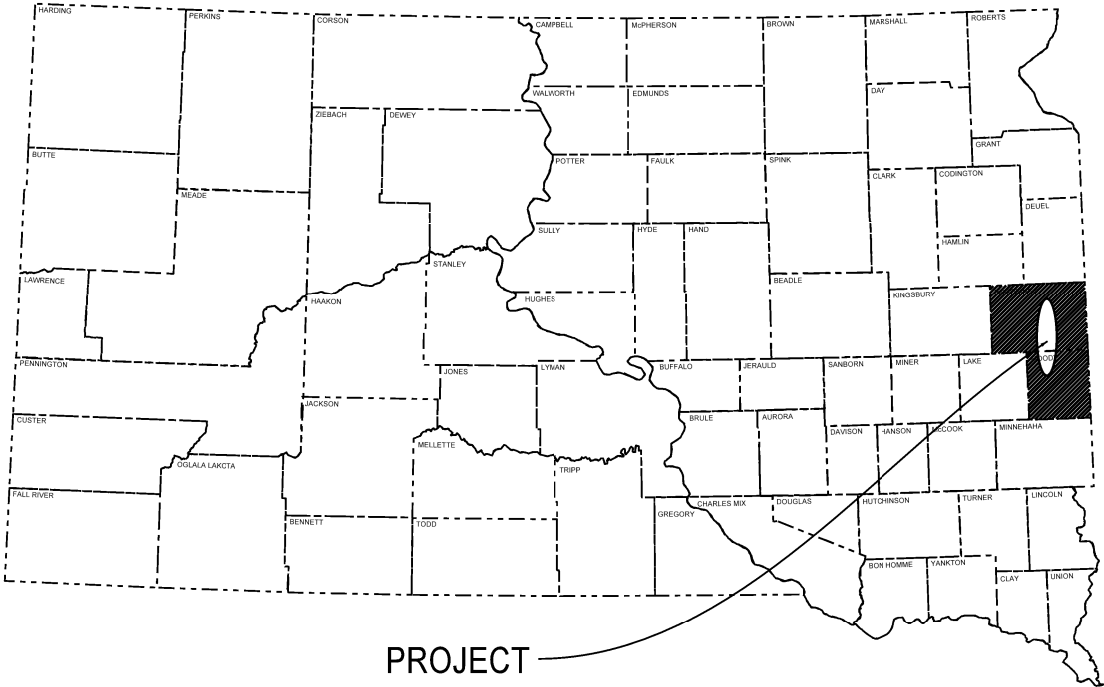
STATE OF SOUTH DAKOTA	PROJECT	SHEET NO.	TOTAL SHEETS
	PH 0010(144)	1	6
Plotting Date: 03/04/2025			

PROJECT PH 0010(144)
INTERSTATE 29
BROOKINGS & MOODY
COUNTIES

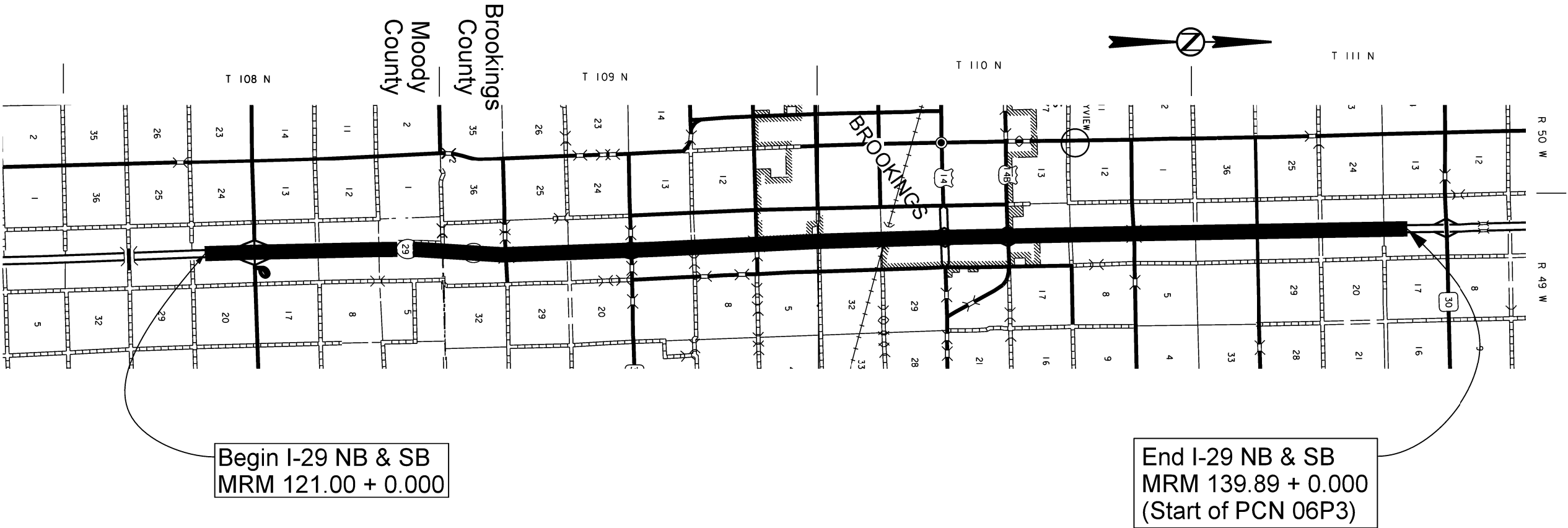
DURABLE PAVEMENT MARKING
PCN 06AN

INDEX OF SHEETS

SHEET 1	TITLE SHEET & INDEX
SHEET 2-3	ESTIMATE OF QUANTITIES
SHEET 4	& ENVIRONMENTAL COMMITMENTS
SHEET 5-6	PLAN NOTES
	STANDARD PLATES



PROJECT



Begin I-29 NB & SB
MRM 121.00 + 0.000

End I-29 NB & SB
MRM 139.89 + 0.000
(Start of PCN 06P3)

DESIGN DESIGNATION - I29

AADT (2023)	6809
AADT (2043)	10698
DHV	1264
D	50%
DHV T%	9.6%
AADT T%	21%
V	80 MPH

STORM WATER PERMIT
NONE REQUIRED

GROSS LENGTH	200,090.88 FEET	37.896 MILES
LENGTH OF EXCEPTIONS	0 FEET	0 MILES
NET LENGTH	200,090.88 FEET	37.896 MILES

6

May 7, 2025

ESTIMATE OF QUANTITIES

BID ITEM NUMBER	ITEM	QUANTITY	UNIT
009E0010	Mobilization	Lump Sum	LS
633E3000	Durable Pavement Marking, 4" White	251,420	Ft
633E3005	Durable Pavement Marking, 4" Yellow	200,091	Ft
633E5050	Surface Preparation for Pavement Marking	451,511	Ft
634E0120	Traffic Control, Miscellaneous	Lump Sum	LS

SPECIFICATIONS

Standard Specifications for Roads and Bridges, 2015 Edition and Required Provisions, Supplemental Specifications, and Special Provisions as included in the Proposal.

ENVIRONMENTAL COMMITMENTS

The SDDOT is committed to protecting the environment and uses Environmental Commitments as a communication tool for the Engineer and Contractor to ensure that attention is given to avoid, minimize, and/or mitigate an environmental impact. Environmental commitments to various agencies and the public have been made to secure approval of this project. An agency with permitting authority can delay a project if identified environmental impacts have not been adequately addressed. Unless otherwise designated, the Contractor’s primary contact regarding matters associated with these commitments will be the Project Engineer. During construction, the Project Engineer will verify that the Contractor has met Environmental Commitment requirements. These environmental commitments are not subject to change without prior written approval from the SDDOT Environmental Office.

Additional guidance on SDDOT’s Environmental Commitments can be accessed through the Environmental Procedures Manual found at: <<https://dot.sd.gov/media/documents/EnvironmentalProceduresManual.pdf>>

For questions regarding change orders in the field that may have an effect on an Environmental Commitment, the Project Engineer will contact the Environmental Engineer at 605-773-3180 or 605-773-4336 to determine whether an environmental analysis and/or resource agency coordination is necessary.

Once construction is complete, the Project Engineer will review all environmental commitments for the project and document their completion.

COMMITMENT B: FEDERALLY THREATENED, ENDANGERED, AND PROTECTED SPECIES

COMMITMENT B2: WHOOPING CRANE

The Whooping Crane is a spring and fall migratory bird in South Dakota that is about 5 feet tall and typically stops on wetlands, rivers, and agricultural lands along their migration route. An adult Whooping Crane is white with a red crown and a long, dark, pointed bill. Immature Whooping Cranes are cinnamon brown. While in flight, their long necks are kept straight and their long dark legs trail behind. Adult Whooping Cranes' black wing tips are visible during flight.

Action Taken/Required:

Harassment or other measures to cause the Whooping Crane to leave the site is a violation of the Endangered Species Act. If a Whooping Crane is sighted roosting in the vicinity of the project, borrow pits, or staging areas associated with the project, cease construction activities in the affected area until the Whooping Crane departs and immediately contact the Project Engineer. The Project Engineer will contact the Environmental Office so that the sighting can be reported to USFWS.

COMMITMENT B4: BALD EAGLE

Bald eagles are known to occur in this area.

Action Taken/Required:

If a nest is observed within one mile of the project site, notify the Project Engineer immediately so that he/she can consult with the Environmental Office for an appropriate course of action.

COMMITMENT E: STORM WATER

Construction activities constitute less than 1 acre of disturbance.

Action Taken/Required:

At a minimum and regardless of project size, appropriate erosion and sediment control measures must be installed to control the discharge of pollutants from the construction site.

COMMITMENT H: WASTE DISPOSAL SITE

The Contractor will furnish a site(s) for the disposal of construction and/or demolition debris generated by this project.

Action Taken/Required:

Construction and/or demolition debris may not be disposed of within the Public ROW.

The waste disposal site(s) will be managed and reclaimed in accordance with the following from the General Permit for Construction/Demolition Debris Disposal Under the South Dakota Waste Management Program issued by the Department of Agriculture and Natural Resources.

The waste disposal site(s) will not be located in a wetland, within 200 feet of surface water, or in an area that adversely affects wildlife, recreation,

aesthetic value of an area, or any threatened or endangered species, as approved by the Environmental Office and the Project Engineer.

If the waste disposal site(s) is located such that it is within view of any ROW, the following additional requirements will apply:

1. Construction and/or demolition debris consisting of concrete, asphalt concrete, or other similar materials will be buried in a trench separate from wood debris. The final cover over the construction and/or demolition debris will consist of a minimum of 1 foot of soil capable of supporting vegetation. Waste disposal sites provided outside of the Public ROW will be seeded in accordance with Natural Resources Conservation Service recommendations. The seeding recommendations may be obtained through the appropriate County NRCS Office. The Contractor will control the access to waste disposal sites not within the Public ROW with fences, gates, and placement of a sign or signs at the entrance to the site stating, “No Dumping Allowed”.

2. Concrete and asphalt concrete debris may be stockpiled within view of the ROW for a period not to exceed the duration of the project. Prior to project completion, the waste will be removed from view of the ROW or buried, and the waste disposal site reclaimed as noted above.

The above requirements will not apply to waste disposal sites that are covered by an individual solid waste permit as specified in SDCL 34A-6-58, SDCL 34A-6-1.13, and ARSD 74:27:10:06. Failure to comply with the requirements stated above may result in civil penalties in accordance with South Dakota Solid Waste Law, SDCL 34A-6-1.31.

All costs associated with furnishing waste disposal site(s), disposing of waste, maintaining control of access (fence, gates, and signs), and reclamation of the waste disposal site(s) will be incidental to the various contract items.

COMMITMENT I: HISTORIC PRESERVATION OFFICE CLEARANCES

The SDDOT has obtained concurrence with the State Historic Preservation Office (SHPO or THPO) for all work included within the project limits and all department designated sources and designated option material sources, stockpile sites, storage areas, and waste sites provided within the plans.

Action Taken/Required:

All earth disturbing activities not designated within the plans require a cultural resource review prior to scheduling the pre-construction meeting. This work includes but is not limited to: Contractor furnished material sources, material processing sites, stockpile sites, storage areas, plant sites, and waste areas.

The Contractor will arrange and pay for a record search and when necessary, a cultural resource survey. The Contractor has the option to contact the state Archaeological Research Center (ARC) at 605-394-1936 or another qualified archaeologist, to obtain either a records search or a cultural resources survey. A record search might be sufficient for review if the site was previously surveyed; however, a cultural resources survey may need to be conducted by a qualified archaeologist.

The Contractor will provide ARC with the following: a topographical map or aerial view in which the site is clearly outlined, site dimensions, project number, and PCN. If applicable, provide evidence that the site has been previously disturbed by farming, mining, or construction activities with a landowner statement that artifacts have not been found on the site.

The Contractor will submit the cultural resources survey report to SDDOT Environmental Office, 700 East Broadway Avenue, Pierre, SD 57501-2586. SDDOT will submit the information to the appropriate SHPO/THPO. Allow **30 Days** from the date this information is submitted to the Environmental Engineer for SHPO/THPO review.

In the event of an inadvertent discovery of human remains, funerary objects, or if evidence of cultural resources is identified during project construction activities, then such activities within 100 feet of the inadvertent discovery will immediately cease and the Project Engineer will be immediately notified. The Project Engineer will contact the SDDOT Environmental Office, who will contact the appropriate SHPO/THPO within 48 hours of the discovery to determine an appropriate course of action.

SHPO/THPO review does not relieve the Contractor of the responsibility for obtaining any additional permits and clearances for Contractor furnished material sources, material processing sites, stockpile sites, storage areas, plant sites, and waste areas that affect wetlands, threatened and endangered species, or waterways. The Contractor will not utilize a site known or suspected of having contaminated soil or water. The Contractor will provide the required permits and clearances to the Project Engineer at the preconstruction meeting.

COORDINATION BETWEEN CONTRACTORS

The Contractor will schedule work so as not to interfere with or hinder the progress of the work performed by the other Contractors on PCNs 06P3, 080D and 09L6. Conflicting traffic control devices may need to be temporarily adjusted or removed as directed by the Engineer and at no additional cost to the contract.

PCN 06P3 is an asphalt surfacing project on the SB Lanes from MRM 139.89 to MRM 151 (approx..) Duininck, Inc. is the prime contractor for this contract.

PCN 080D is the Variable speed limit project from MRM 114 to MRM 136. Most of this work will be done off the roadway. Engelstad Electric is the prime contractor for this project.

PCN 09L6 is a shoulder chip seal project. This project will require the most coordination between Contractors. The pavement markings in this section must be completed **AFTER** the flush seal. Flush seal is required to be complete by August 8, 2025.

SEQUENCE OF OPERATIONS

The Contractor will submit a sequence of operations for approval two weeks prior to the preconstruction meeting. If changes to the sequence of operations are proposed during the project, these must be submitted for review a minimum of one week prior to potential implementation. Approval for changes to the sequence of operations will only be allowed when the proposed changes meet with the Department’s intent for traffic control and sequencing of the work.

GENERAL TRAFFIC CONTROL

Existing guide, route, informational logo, regulatory, and warning signs will be temporarily reset and maintained during construction. Removing, relocating, covering, salvaging, and resetting of existing traffic control devices, including delineation, will be the responsibility of the Contractor. Cost for this work will be incidental to the contract unit prices for the various items unless otherwise specified in the plans. Any delineators and signs damaged or lost will be replaced by the Contractor at no cost to the State.

All temporary traffic control sign locations will be set in the field by the Contractor and verified by the Engineer prior to installation.

Portable sign supports will not be located on sidewalks, bicycle facilities, or other areas designated for pedestrian or bicycle traffic.

All construction operations will be conducted in the general direction of traffic movement.

If there is a discrepancy between the traffic control plans, standard plates, and the MUTCD, whichever is more stringent will be used, as determined by the Engineer.

Unless otherwise stated in these plans, work will not be allowed during hours of darkness.

Fixed location signing placed more than 4 calendar days prior to the start of construction will be covered or laid down until the time of construction. The covers must be approved by the Engineer prior to installation. The cost of materials, labor, and equipment necessary to complete this work will be incidental to other contract items. No separate payment will be made.

GENERAL PAVEMENT MARKING NOTES

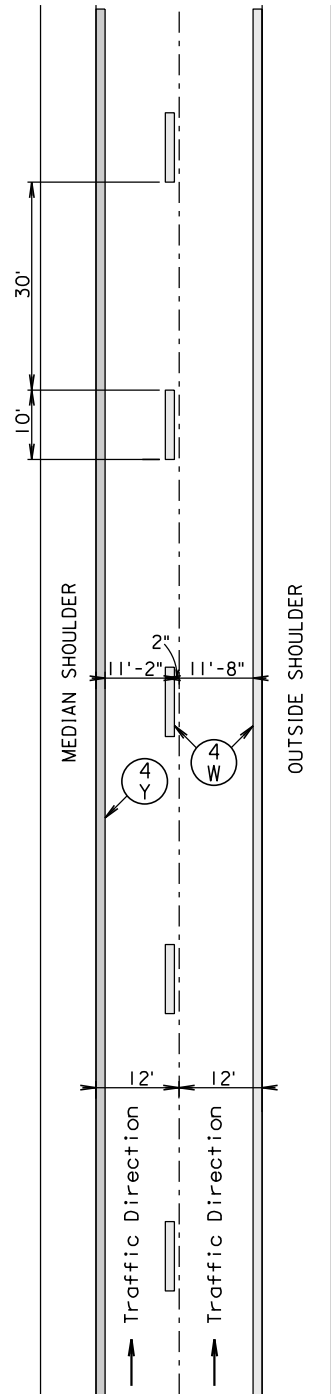
For this project, Durable Pavement Marking will be applied on mainline I-29 NB & SB from MRM 121.00 to MRM 139.89. Durable pavement markings are currently in place and should only require Surface Preparation. Direction on the surface preparation can be found in the Special Provision for Durable Pavement

The marking for the additional lanes between Exit 132 & 133 should be installed as per “Detail A” on Standard Plates 633.05 & 633.06.

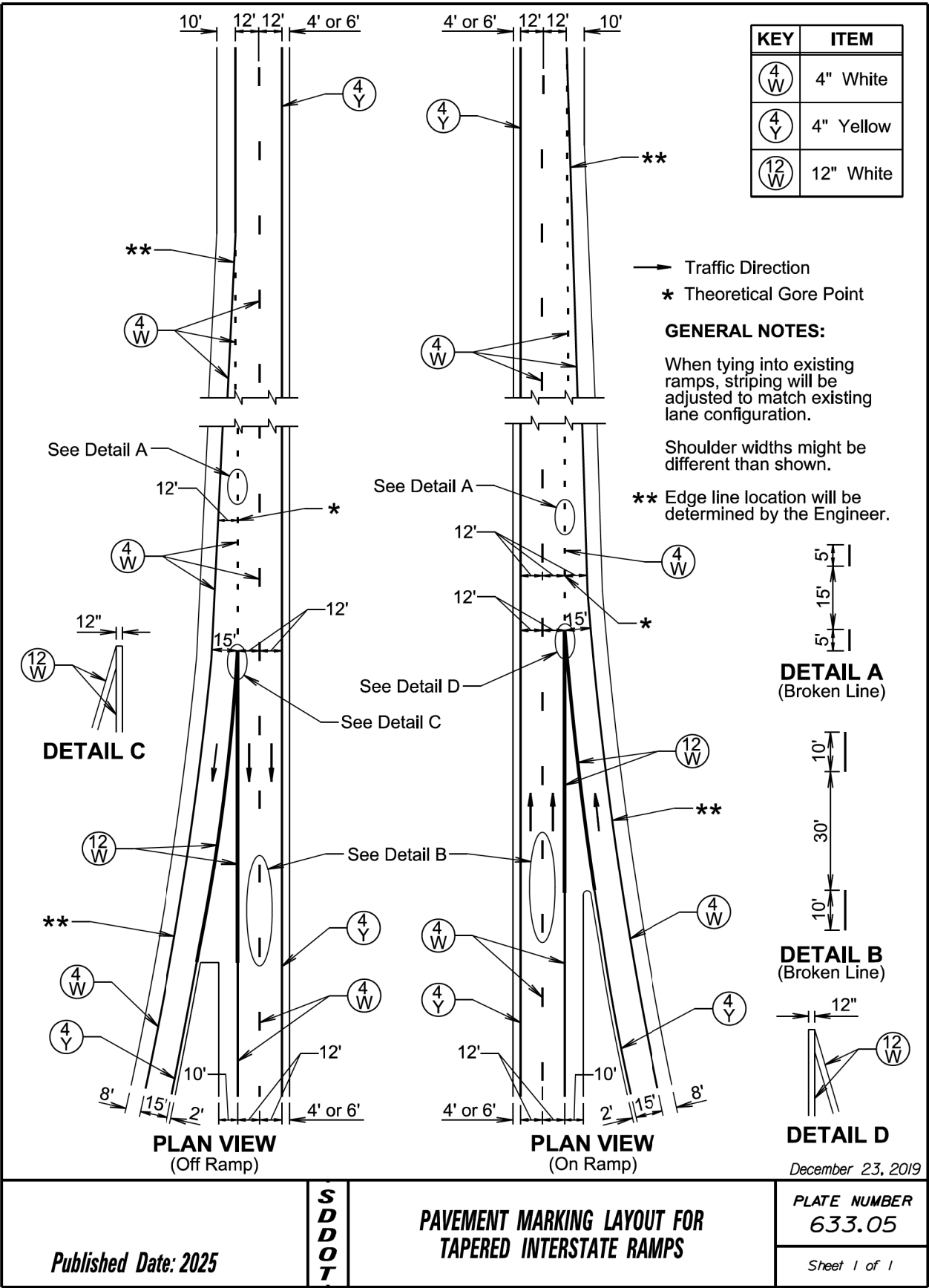
Any questions during installation can be directed to the Aberdeen Region Traffic Engineer:

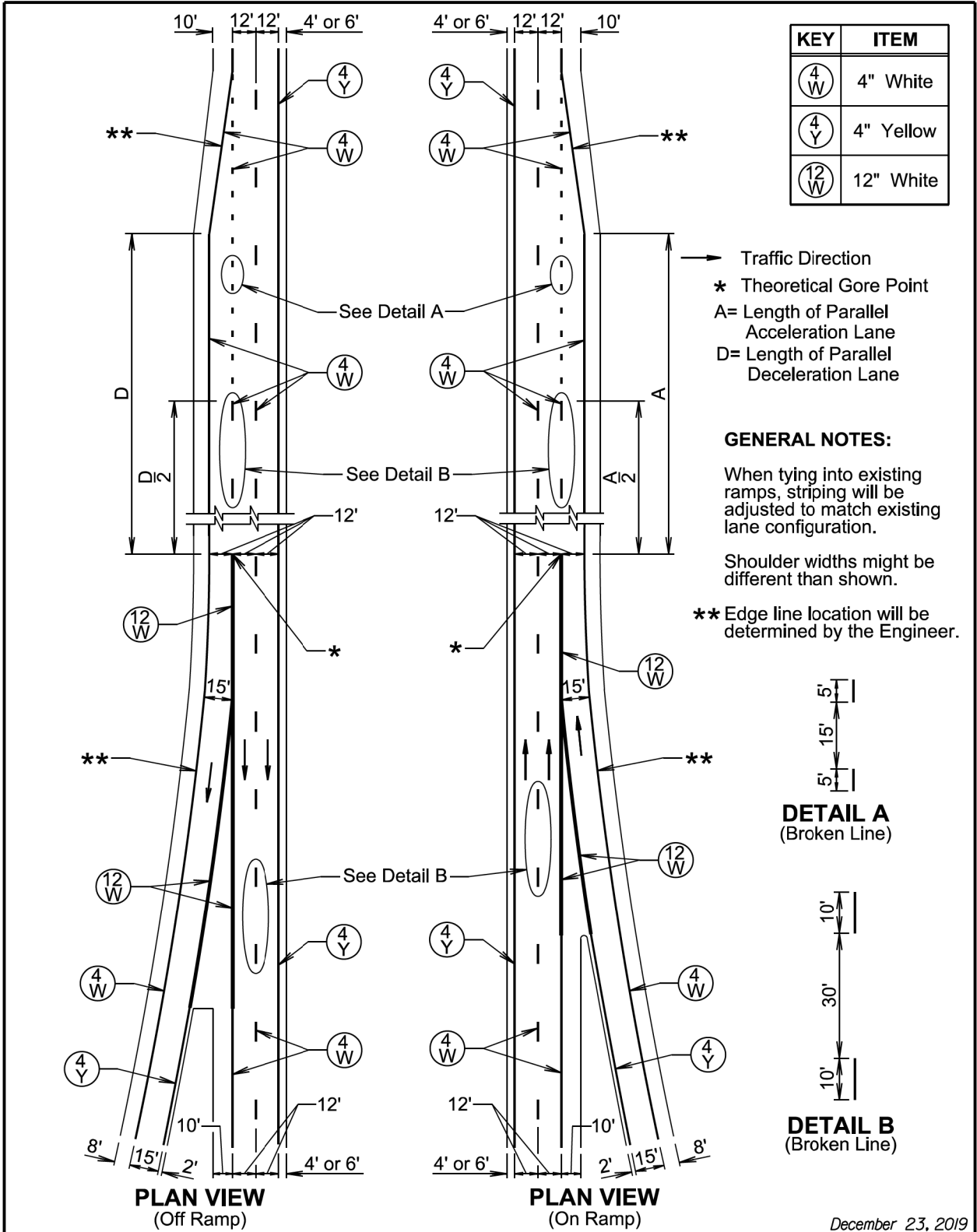
Matt Dorfschmidt: matt.dorfschmidt@state.sd.us
Cell: 605-380-9011; Office: 605-626-7879

FOUR LANE
PAVEMENT MARKING
ONLY ONE DIRECTION SHOWN



KEY	ITEM
(4 W)	4" White
(4 Y)	4" Yellow





December 23, 2019

Published Date: 2025

S
D
D
O
T

PAVEMENT MARKING LAYOUT FOR
PARALLEL INTERSTATE RAMPS

PLATE NUMBER
633.06

Sheet 1 of 1

* Messages on signs will vary depending on the operation being conducted.

Vehicle-mounted signs will be mounted in a manner such that they are not obscured by equipment or supplies. Sign legends on vehicle-mounted signs will be covered or turned from view when work is not in progress.

Shadow and Work vehicles will display high-intensity rotating, flashing, oscillating, or strobe lights, flags, signs, or arrow boards.

Vehicle hazard warning signals will not be used instead of the vehicle's high-intensity rotating, flashing, oscillating, or strobe lights.

Arrow boards will, as a minimum, be Type B, with a size of 60" x 30".

All costs associated with the traffic control for mobile operation including signs, arrow boards and equipment will be incidental to the contract lump sum price for "Traffic Control, Miscellaneous".

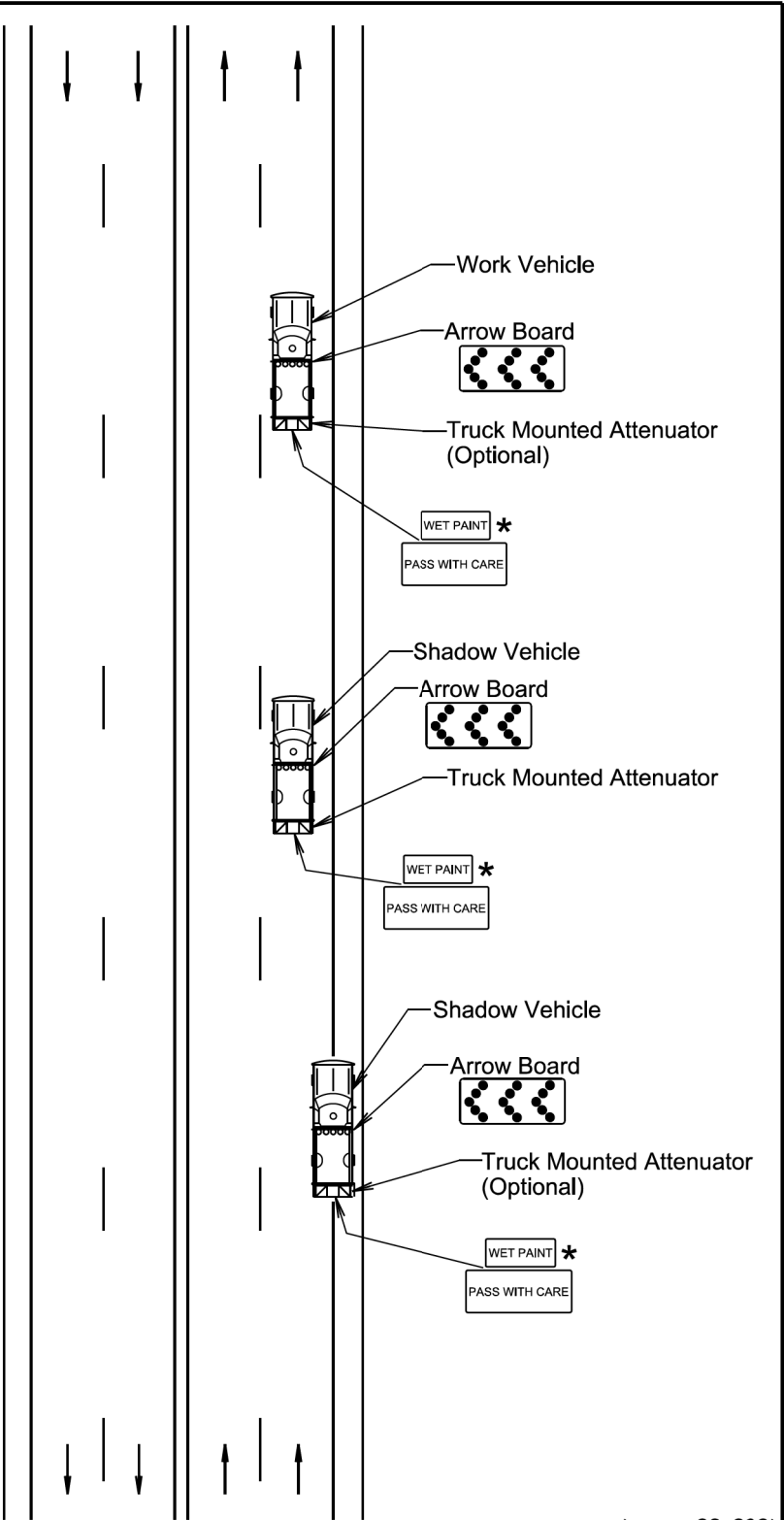
Published Date: 2025

S
D
D
O
T

MOBILE OPERATIONS ON
MULTI-LANE HIGHWAYS

PLATE NUMBER
634.08

Sheet 1 of 1



January 22, 2021