

STATE OF SOUTH DAKOTA  
DEPARTMENT OF TRANSPORTATION  
PLANS FOR PROPOSED

STATE OF SOUTH DAKOTA	PROJECT	SHEET	TOTAL SHEETS
	NH 0212(202)38 P 0079(88)133	1	106

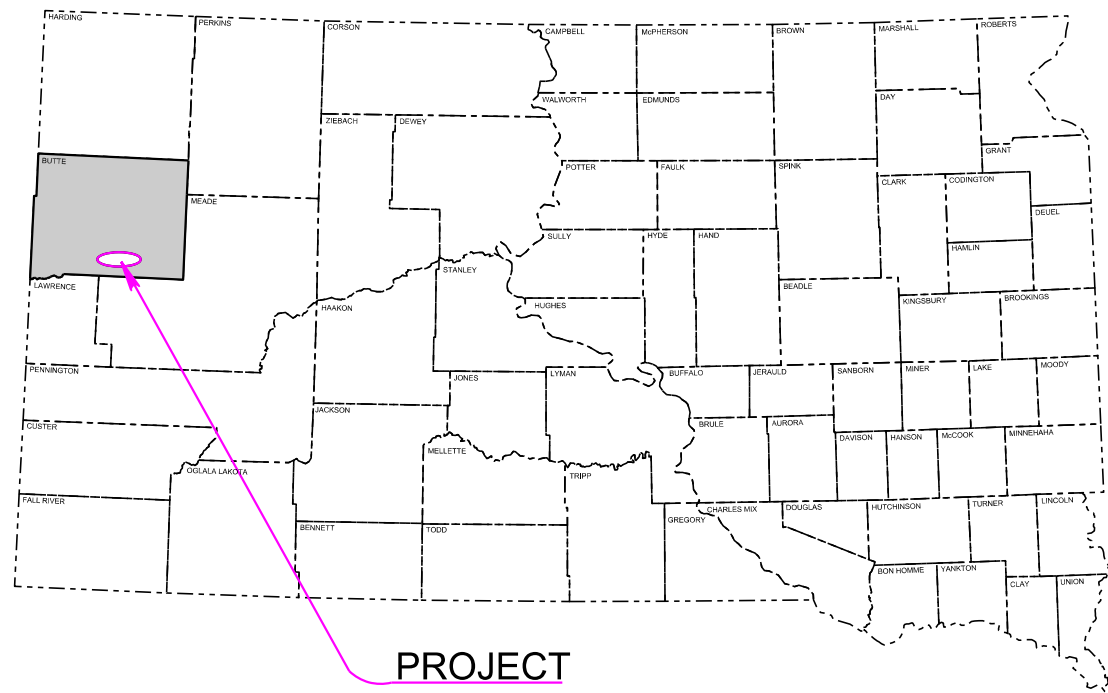
Plotting Date: 04/02/2024

INDEX OF SECTIONS

- Section A: Estimate of Quantities and Environmental Commitments
- Section B: Grading Plans
- Section C: Traffic Control Plans
- Section D: Erosion and Sediment Control Plans
- Section X: Cross Sections

PROJECTS P 0079(88)133 &  
NH 0212(202)38  
SD HIGHWAY 79 &  
US HIGHWAY 212  
BUTTE COUNTY

ADA CURB RAMPS, SIDEWALKS & ROW PLANS  
PCNs 06G1 & 06G2



Plot Scale - 1:200



**BEGIN NH 0212(202)38**  
Station 0+00.00= 465+50.00 on NH 0079(65)129  
located 59.07 feet south and 437.59 feet east  
of the southwest corner of Lot 1 in Block 54  
of the Original Townsite of Newell

**END P 079(88)133**  
Station 6+00.00  
MRM 133.12

**BEGIN P 079(88)133**  
Station 0+00.00  
MRM 133.02

**END NH 0212(202)38**  
Station a 13+10.00=0+00.00 on  
F206(11) located 42.07 feet south and  
48.72 feet east of the southeast corner of  
Lot 1 in Block 61 of the  
Original Townsite of Newell  
MRM 39.43

**Equation NH 0212(202)38**  
23+23.94 Bk= a 0+00.00 Ah

**DESIGN DESIGNATION - SD79**

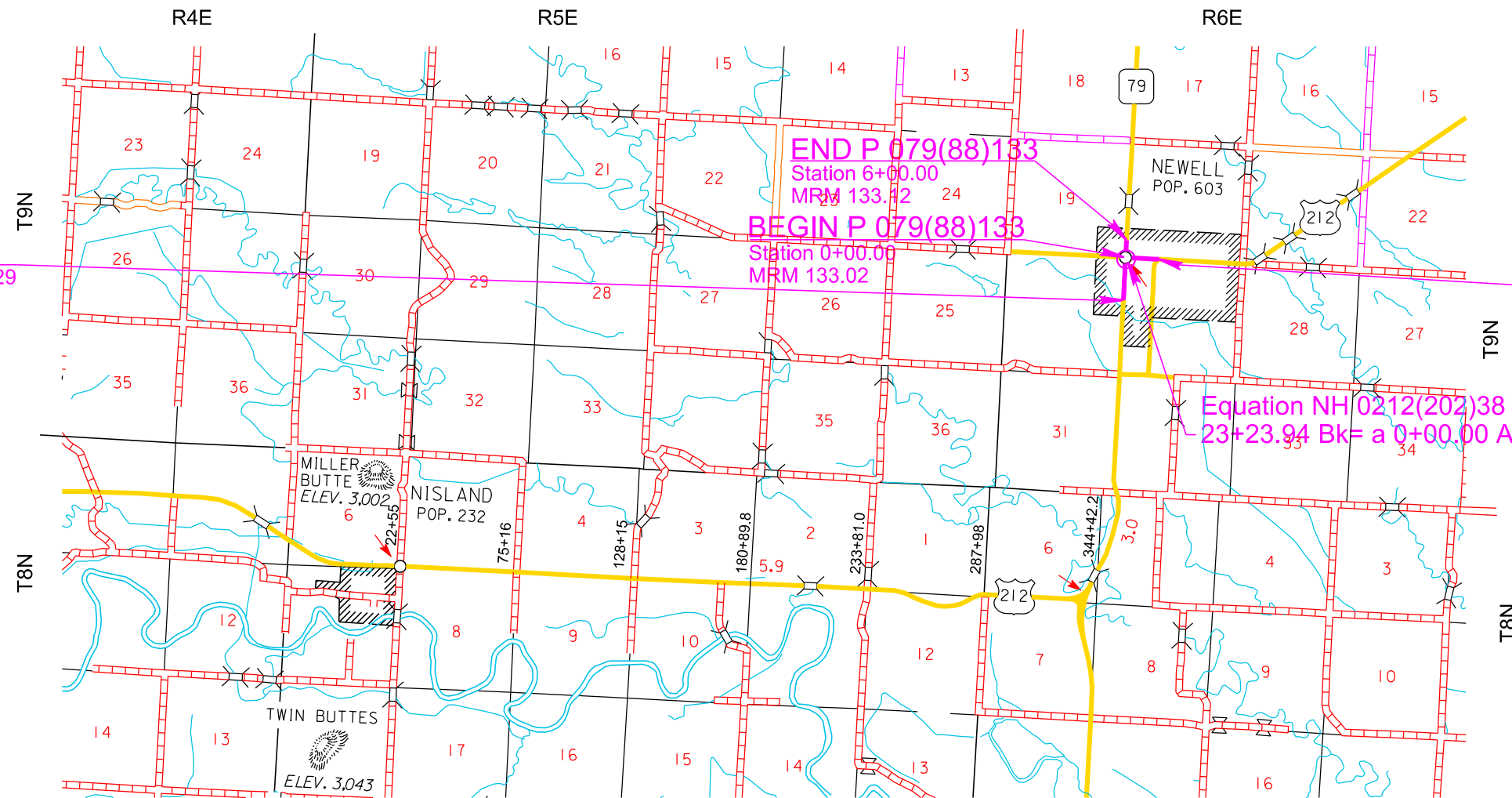
AAADT (2020)	1562
AAADT (2040)	1759
DHV	280
D	50%
DHV T%	7.6%
AAADT T%	16.8%
V	65 mph

**DESIGN DESIGNATION - US212**

AAADT (2020)	1406
AAADT (2040)	1584
DHV	252
D	50%
DHV T%	3.6%
AAADT T%	7.8%
V	65 mph

**STORM WATER PERMIT**

Major Receiving  
Body of Water: Horse Creek  
Area Disturbed: 1.1 ac  
Total Project Area: 1.7 ac  
Approx. Begin Lat,Long: 44.7134, -103.4256



Gross Length	4,233.74 Feet	0.802 Miles
Length of Exceptions	0.00 Feet	0.000 Miles
Net Length	4,233.74 Feet	0.802 Miles

4

December 4, 2024

Plotted From - TRPR13418

File - U:\trproj\Butte06G2\Title.dgn

# ESTIMATE OF QUANTITIES AND ENVIRONMENTAL COMMITMENTS

STATE OF SOUTH DAKOTA	PROJECT	SHEET	TOTAL SHEETS
	NH 0212(202)38 P 0079(88)133	A1	A3
Plotting Date: 07/01/2024		Rev 07/01/24 RG	

## Section B - Grading US 212 PCN 06G2

## SD79 PCN 06G1

BID ITEM NUMBER	ITEM	QUANTITY	UNIT
009E0010	Mobilization	Lump Sum	LS
009E3200	Construction Staking	Lump Sum	LS
009E3220	Reestablish Right-of-Way and Property Corner	57	Each
009E3225	Reestablish Public Land Survey System Corner	2	Each
100E0020	Clear and Grub Tree	24	Each
110E0300	Remove Concrete Curb and/or Gutter	1,886	Ft
110E0605	Remove Chain Link Fence	71	Ft
110E1010	Remove Asphalt Concrete Pavement	493.9	SqYd
110E1100	Remove Concrete Pavement	29.0	SqYd
110E1130	Remove Concrete Driveway Pavement	231.0	SqYd
110E1140	Remove Concrete Sidewalk	2,272.0	SqYd
120E0010	Unclassified Excavation	120	CuYd
250E0020	Incidental Work, Grading	Lump Sum	LS
260E2010	Gravel Cushion	377.7	Ton
320E1200	Asphalt Concrete Composite	151.9	Ton
380E3520	6" PCC Approach Pavement	401.8	SqYd
380E3540	8" PCC Approach Pavement	383.7	SqYd
380E4050	8" PCC Fillet Section	109.1	SqYd
420E0400	Structure Excavation, Miscellaneous	15	CuYd
450E0112	15" RCP Class 2, Furnish	24	Ft
450E0120	15" RCP, Install	24	Ft
450E4748	15" CMP 14 Gauge, Furnish	2	Ft
450E4750	15" CMP, Install	2	Ft
450E4758	18" CMP 14 Gauge, Furnish	424	Ft
450E4760	18" CMP, Install	424	Ft
450E8004	15" RCP to CMP Transition, Furnish	1	Each
450E8005	15" Pipe Transition, Install	1	Each
451E6080	Adjust Water Valve Box	5	Each
462E0100	Class M6 Concrete	30.6	CuYd
480E0200	Epoxy Coated Reinforcing Steel	3,383	Lb
621E0030	3' Chain Link Fence with Top Rail	68	Ft
621E0410	Pedestrian Swing Gate	1	Each
650E0060	Type B66 Concrete Curb and Gutter	915	Ft
650E4660	Type P6 Concrete Gutter	28	Ft
650E4680	Type P8 Concrete Gutter	40	Ft
650E6080	8" Concrete Valley Gutter	435	Ft
651E0040	4" Concrete Sidewalk	26,051	SqFt
651E0060	6" Concrete Sidewalk	770	SqFt
651E7000	Type 1 Detectable Warnings	510	SqFt
670E8002	Trench Drain Frame and Grate	221	Ft
735E4000	Tree Trimming	11	Each

BID ITEM NUMBER	ITEM	QUANTITY	UNIT
009E0010	Mobilization	Lump Sum	LS
009E3200	Construction Staking	Lump Sum	LS
009E3220	Reestablish Right-of-Way and Property Corner	9	Each
100E0020	Clear and Grub Tree	10	Each
110E0300	Remove Concrete Curb and/or Gutter	450	Ft
110E0420	Remove Drop Inlet Frame and Grate Assembly	1	Each
110E1010	Remove Asphalt Concrete Pavement	89.4	SqYd
110E1100	Remove Concrete Pavement	9.2	SqYd
110E1130	Remove Concrete Driveway Pavement	136.2	SqYd
110E1140	Remove Concrete Sidewalk	252.2	SqYd
120E0010	Unclassified Excavation	95	CuYd
120E0600	Contractor Furnished Borrow Excavation	20	CuYd
260E2010	Gravel Cushion	85.5	Ton
320E1200	Asphalt Concrete Composite	19.8	Ton
380E3520	6" PCC Approach Pavement	256.8	SqYd
380E4050	8" PCC Fillet Section	80.4	SqYd
451E6080	Adjust Water Valve Box	1	Each
650E0060	Type B66 Concrete Curb and Gutter	236	Ft
650E4660	Type P6 Concrete Gutter	97	Ft
651E0040	4" Concrete Sidewalk	5,080	SqFt
651E7000	Type 1 Detectable Warnings	60	SqFt
670E1200	Type B Frame and Grate	1	Each
670E6000	Adjust Drop Inlet	1	Each
735E4000	Tree Trimming	3	Each

## Section C - Traffic Control PCN 06G1

BID ITEM NUMBER	ITEM	QUANTITY	UNIT
634E0110	Traffic Control Signs	73.8	SqFt
634E0120	Traffic Control, Miscellaneous	Lump Sum	LS

## PCN 06G2

BID ITEM NUMBER	ITEM	QUANTITY	UNIT
634E0110	Traffic Control Signs	361.8	SqFt
634E0120	Traffic Control, Miscellaneous	Lump Sum	LS

### INDEX OF SHEETS

A1 Estimate of Quantities for Sections B, C, and D  
A2 to A3 Environmental Commitments

## Section D - Erosion and Sediment Control PCN 06G1

BID ITEM NUMBER	ITEM	QUANTITY	UNIT
230E0010	Placing Topsoil	25	CuYd
730E0206	Type D Permanent Seed Mixture	14	Lb
731E0100	Fertilizing	68	Lb
732E0250	Fiber Mulching	138	Lb
734E0845	Sediment Control at Inlet with Frame and Grate	1	Each

## PCN 06G2

BID ITEM NUMBER	ITEM	QUANTITY	UNIT
230E0010	Placing Topsoil	76	CuYd
730E0206	Type D Permanent Seed Mixture	43	Lb
731E0100	Fertilizing	211	Lb
732E0250	Fiber Mulching	426	Lb
734E0845	Sediment Control at Inlet with Frame and Grate	2	Each

### SPECIFICATIONS

Standard Specifications for Roads and Bridges, 2015 Edition and Required Provisions, Supplemental Specifications, and Special Provisions as included in the Proposal.

# ESTIMATE OF QUANTITIES AND ENVIRONMENTAL COMMITMENTS

STATE OF SOUTH DAKOTA	PROJECT	SHEET	TOTAL SHEETS
	NH 0212(202)38 P 0079(88)133	A2	A3

Plotting Date: 05/08/2024

## ENVIRONMENTAL COMMITMENTS 06G1/06G2

The SDDOT is committed to protecting the environment and uses Environmental Commitments as a communication tool for the Engineer and Contractor to ensure that attention is given to avoid, minimize, and/or mitigate an environmental impact. Environmental commitments to various agencies and the public have been made to secure approval of this project. An agency with permitting authority can delay a project if identified environmental impacts have not been adequately addressed. Unless otherwise designated, the Contractor's primary contact regarding matters associated with these commitments will be the Project Engineer. During construction, the Project Engineer will verify that the Contractor has met Environmental Commitment requirements. These environmental commitments are not subject to change without prior written approval from the SDDOT Environmental Office.

Additional guidance on SDDOT's Environmental Commitments can be accessed through the Environmental Procedures Manual found at:

<<https://dot.sd.gov/media/documents/EnvironmentalProceduresManual.pdf>>

For questions regarding change orders in the field that may have an effect on an Environmental Commitment, the Project Engineer will contact the Environmental Engineer at 605-773-3180 or 605-773-4336 to determine whether an environmental analysis and/or resource agency coordination is necessary.

Once construction is complete, the Project Engineer will review all environmental commitments for the project and document their completion.

## COMMITMENT C: WATER SOURCE

The Contractor will not withdraw water with equipment previously used outside the State of South Dakota or previously used in aquatic invasive species (AIS) positive waters within South Dakota without prior approval from the SDDOT Environmental Office. To prevent and control the introduction and spread of invasive species into the project vicinity, all equipment will be power washed with hot water ( $\geq 140$  °F) and completely dried for a minimum of 7 days prior to subsequent use. South Dakota administrative rule 41:10:04:02 forbids the possession and transport of AIS; therefore, all attached dirt, mud, debris and vegetation must be removed and all compartments and tanks capable of holding standing water must be drained. This includes, but is not limited to, all equipment, pumps, lines, hoses and holding tanks.

### Action Taken/Required:

The Contractor will obtain the necessary permits from the regulatory agencies such as the South Dakota Department of Agriculture and Natural Resources (DANR) and the United States Army Corps of Engineers (USACE) prior to water extraction activities.

Additional information and mapping of water sources impacted by Aquatic Invasive Species in South Dakota can be accessed at:

< <https://sdleastwanted.sd.gov/maps/default.aspx> >

< [South Dakota Administrative Rule 41:10:04 Aquatic Invasive Species: https://sdlegislature.gov/rules/DisplayRule.aspx?Rule=41:10:04](https://sdlegislature.gov/rules/DisplayRule.aspx?Rule=41:10:04) >

## COMMITMENT E: STORM WATER

Construction activities constitute 1 acre or more of earth disturbance and/or work in a waterway.

### Action Taken/Required:

The DANR General Permit for Stormwater Discharges Associated with Construction Activities is required for construction activity disturbing one or more acres of earth and work in a waterway. The SDDOT is the owner of this permit and will submit the NOI to DANR 15 days prior to project start in order to obtain coverage under the General Permit. Work can begin once the DANR letter of approval is received.

The Contractor must adhere to the "Special Provision Regarding Storm Water Discharges to Waters of the State."

The Contractor will complete the DANR Contractor Certification Form prior to the pre-construction meeting. The form certifies under penalty of law that the Contractor understands and will comply with the terms and conditions of the permit for this project. Work may not begin on this project until this form is signed and submitted to DANR.

The form can be found at:

<[https://danr.sd.gov/OfficeOfWater/SurfaceWaterQuality/docs/DANR\\_CGPA\\_ppendixCCA2018Fillable.pdf](https://danr.sd.gov/OfficeOfWater/SurfaceWaterQuality/docs/DANR_CGPA_ppendixCCA2018Fillable.pdf)>

The Contractor is advised that permit coverage may also be required for off-site activities, such as borrow and staging areas, which are the responsibility of the Contractor.

The Contractor is advised that permit coverage may also be required for off-site activities, such as borrow and staging areas, which are the responsibility of the Contractor.

## Storm Water Pollution Prevention Plan

The Storm Water Pollution Prevention Plan (SWPPP) will be developed prior to the submittal of the NOI and will be implemented for all construction activities for compliance with the permit. The SWPPP must be kept on-site and updated as site conditions change. Erosion control measures and best management practices will be implemented in accordance with the SWPPP.

The DOT 298 Form will be used for site inspections and to document changes to the SWPPP. A copy of the completed inspection form will be filed with the SWPPP documents and retained for a minimum of three years.

The inspection will include disturbed areas of the construction site that have not been finally stabilized, areas used for storage materials, structural control measures, and locations where vehicles enter or exit the site. These areas will be inspected for evidence of, or the potential for, pollutants entering the drainage system. Erosion and sediment control measures identified in the SWPPP will be observed to ensure that they are operating correctly, and sediment is not tracked off the site.

Information on storm water permits and SWPPPs are available on the following websites:

SDDOT: < <https://dot.sd.gov/doing-business/environmental/stormwater> >

DANR: < <https://danr.sd.gov/OfficeOfWater/SurfaceWaterQuality/stormwater/default.aspx> >

EPA: < <https://www.epa.gov/npdes> >

# ESTIMATE OF QUANTITIES AND ENVIRONMENTAL COMMITMENTS

STATE OF SOUTH DAKOTA	PROJECT	SHEET	TOTAL SHEETS
	NH 0212(202)38 P 0079(88)133	A3	A3

Plotting Date: 05/08/2024

## COMMITMENT H: WASTE DISPOSAL SITE

The Contractor will furnish a site(s) for the disposal of construction and/or demolition debris generated by this project.

### Action Taken/Required:

Construction and/or demolition debris may not be disposed of within the Public ROW.

The waste disposal site(s) will be managed and reclaimed in accordance with the following from the General Permit for Construction/Demolition Debris Disposal Under the South Dakota Waste Management Program issued by the Department of Agriculture and Natural Resources.

The waste disposal site(s) will not be located in a wetland, within 200 feet of surface water, or in an area that adversely affects wildlife, recreation, aesthetic value of an area, or any threatened or endangered species, as approved by the Environmental Office and the Project Engineer.

If the waste disposal site(s) is located such that it is within view of any ROW, the following additional requirements will apply:

1. Construction and/or demolition debris consisting of concrete, asphalt concrete, or other similar materials will be buried in a trench separate from wood debris. The final cover over the construction and/or demolition debris will consist of a minimum of 1 foot of soil capable of supporting vegetation. Waste disposal sites provided outside of the Public ROW will be seeded in accordance with Natural Resources Conservation Service recommendations. The seeding recommendations may be obtained through the appropriate County NRCS Office. The Contractor will control the access to waste disposal sites not within the Public ROW with fences, gates, and placement of a sign or signs at the entrance to the site stating, "No Dumping Allowed".

2. Concrete and asphalt concrete debris may be stockpiled within view of the ROW for a period not to exceed the duration of the project. Prior to project completion, the waste will be removed from view of the ROW or buried, and the waste disposal site reclaimed as noted above.

The above requirements will not apply to waste disposal sites that are covered by an individual solid waste permit as specified in SDCL 34A-6-58, SDCL 34A-6-1.13, and ARSD 74:27:10:06.

Failure to comply with the requirements stated above may result in civil penalties in accordance with South Dakota Solid Waste Law, SDCL 34A-6-1.31.

All costs associated with furnishing waste disposal site(s), disposing of waste, maintaining control of access (fence, gates, and signs), and reclamation of the waste disposal site(s) will be incidental to the various contract items.

## COMMITMENT I: HISTORIC PRESERVATION OFFICE CLEARANCES

The SDDOT has obtained concurrence with the State Historic Preservation Office (SHPO) for all work included within the project limits and all department designated sources and designated option material sources, stockpile sites, storage areas, and waste sites provided within the plans.

### Action Taken/Required:

All earth disturbing activities not designated within the plans require a cultural resource review prior to scheduling the pre-construction meeting. This work includes but is not limited to: Contractor furnished material sources, material processing sites, stockpile sites, storage areas, plant sites, and waste areas.

The Contractor will arrange and pay for a record search and when necessary, a cultural resource survey. The Contractor has the option to contact the state Archaeological Research Center (ARC) at 605-394-1936 or another qualified archaeologist, to obtain either a records search or a cultural resources survey. A record search might be sufficient for review if the site was previously surveyed; however, a cultural resources survey may need to be conducted by a qualified archaeologist.

The Contractor will provide ARC with the following: a topographical map or aerial view in which the site is clearly outlined, site dimensions, project number, and PCN. If applicable, provide evidence that the site has been previously disturbed by farming, mining, or construction activities with a landowner statement that artifacts have not been found on the site.

The Contractor will submit the cultural resources survey report to SDDOT Environmental Office, 700 East Broadway Avenue, Pierre, SD 57501-2586. SDDOT will submit the information to the appropriate SHPO/THPO. Allow **30 Days** from the date this information is submitted to the Environmental Engineer for SHPO/THPO review.

In the event of an inadvertent discovery of human remains, funerary objects, or if evidence of cultural resources is identified during project construction activities, then such activities within 150 feet of the inadvertent discovery will immediately cease and the Project Engineer will be immediately notified. The Project Engineer will contact the SDDOT Environmental Office, who will contact the appropriate SHPO/THPO within 48 hours of the discovery to determine an appropriate course of action.

SHPO review does not relieve the Contractor of the responsibility for obtaining any additional permits and clearances for Contractor furnished material sources, material processing sites, stockpile sites, storage areas, plant sites, and waste areas that affect wetlands, threatened and endangered species, or waterways. The Contractor will not utilize a site known or suspected of having contaminated soil or water. The Contractor will provide the required permits and clearances to the Project Engineer at the preconstruction meeting.

Plot Scale - 1:200

Plotted From - TRPRt13418

File - ...:\p7\Bure06\G2\NotesSectionA.dgn