


STATE OF SOUTH DAKOTA  
DEPARTMENT OF TRANSPORTATION  
PLANS FOR PROPOSED

 STATE OF SOUTH DAKOTA Rev 12-5-24 pk	PROJECT	SHEET	TOTAL SHEETS
	P 1806(23)186	1	136

P 1806(23)186  
SD HIGHWAY 1806  
STANLEY COUNTY

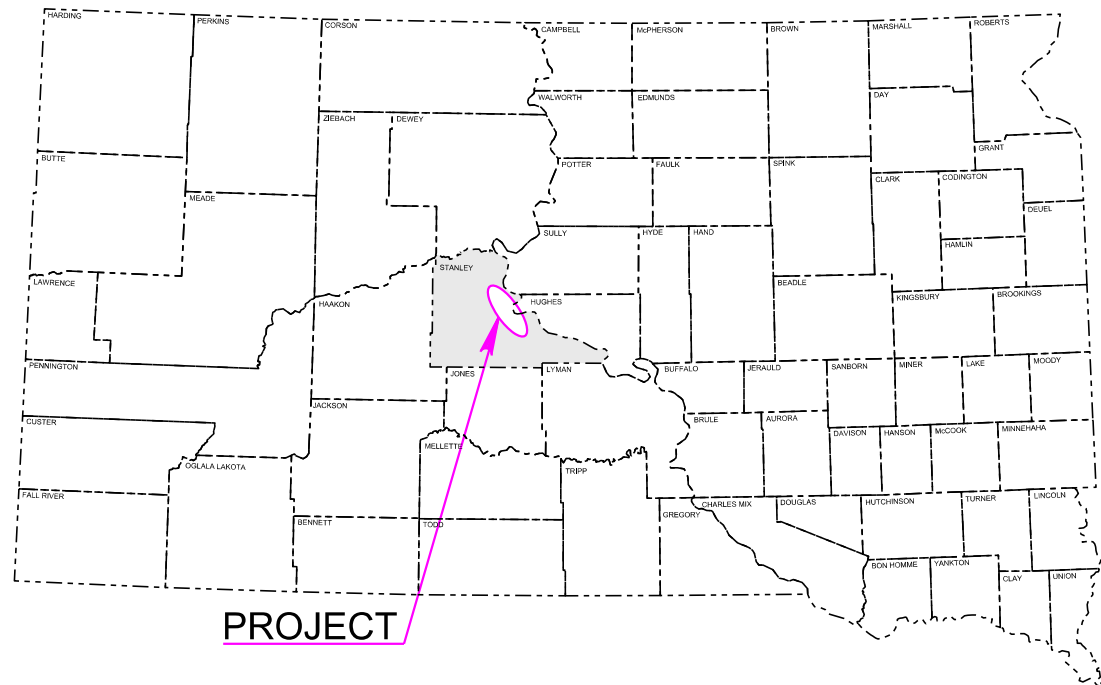
COLD MILLING ASPHALT CONCRETE, ASPHALT CONCRETE OVERLAY, PIPE WORK, INTERSECTION IMPROVMENT, SHOULDER MODIFICATION & ROW PLANS

PCN 06QP

INDEX OF SECTIONS

- Section A: Estimate of Quantities and Environmental Commitments
- Section B: Grading Plans
- Section C: Traffic Control Plans
- Section D: Erosion and Sediment Control Plans
- Section E: Structure Plans
- Section F: Surfacing Plans
- Section M: Pavement Marking Plans
- Section S: Permanent Signing Plans
- Section Z: Pipe Sections

Plot Scale - 1:200



PROJECT

DESIGN DESIGNATION

SD 1806 FROM US 14 TO SD 204

AADT (2022)	1277
AADT (2042)	1846
DHV	294
D	50%
DHV T%	4%
AADT T%	8.8%
V	55 mph

DESIGN DESIGNATION



SD 1806 FROM SD 204 TO END

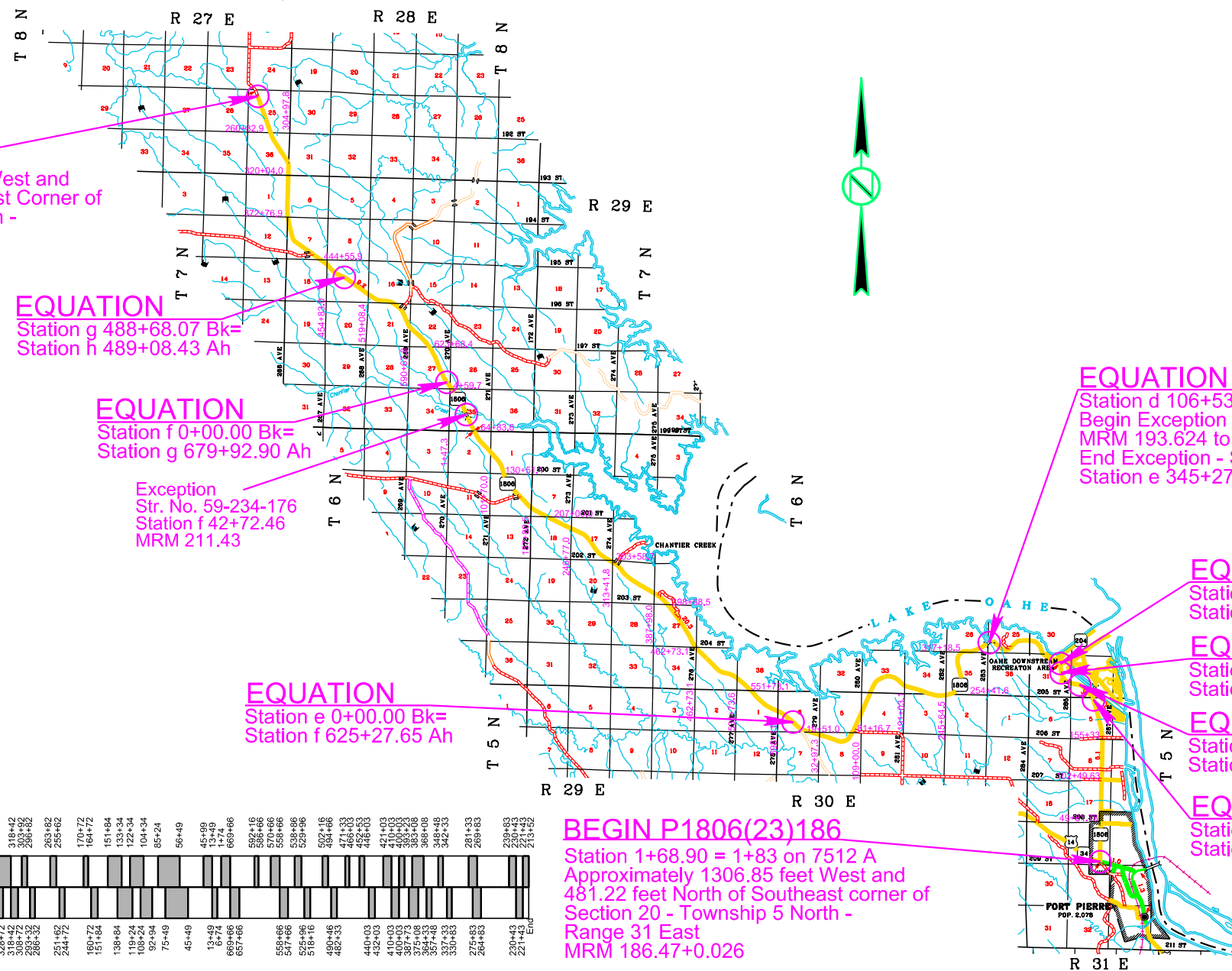
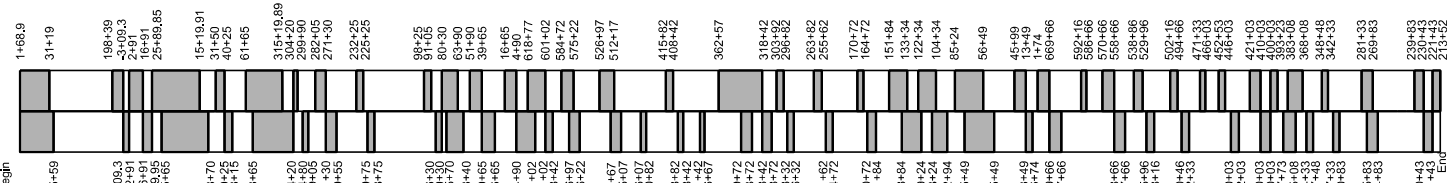
AADT (2022)	152
AADT (2042)	220
DHV	35
D	50%
DHV T%	8.4%
AADT T%	18.4%
V	55 mph

STORM WATER PERMIT

Major Receiving : Missouri  
Body of Water: Lake Oahe  
Area Disturbed:  
Total Project Area:  
Approx. Begin Lat,Long:

Gross Length	182415.00 Feet	34.548 Miles
Length of Exceptions	1087.68 Feet	0.206 Miles
Net Length	181327.32 Feet	34.342 Miles

 Passing  
 No Passing  
 This striping diagram is for informational purposes only. Actual striping for passing/no passing zones should be determined by field verified procedures.



**END P1806(23)186**  
Station h 213+52.00  
Approximately 1237.31 feet West and 823.84 feet South of Northwest Corner of Section 25 - Township 8 North - Range 25 East  
MRM 221.05+00

**EQUATION**  
Station g 488+68.07 Bk=  
Station h 489+08.43 Ah

**EQUATION**  
Station f 0+00.00 Bk=  
Station g 679+92.90 Ah  
  
Exception  
Str. No. 59-234-176  
Station f 42+72.46  
MRM 211.43

**EQUATION**  
Station e 0+00.00 Bk=  
Station f 625+27.65 Ah

**BEGIN P1806(23)186**  
Station 1+68.90 = 1+83 on 7512 A  
Approximately 1306.85 feet West and 481.22 feet North of Southeast corner of Section 20 - Township 5 North - Range 31 East  
MRM 186.47+0.026

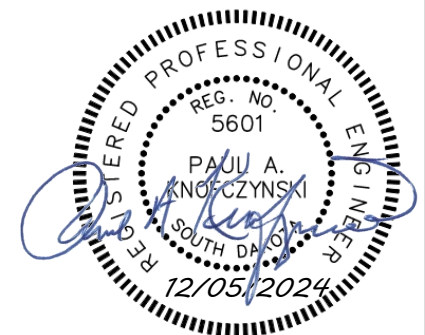
**EQUATION**  
Station d 106+53.82 Bk=  
Begin Exception - Spillway  
MRM 193.624 to MRM 193.830  
End Exception - Spillway  
Station e 345+27.30 Ah

**EQUATION**  
Station c 58+99.24 Bk=  
Station d -0+37.64 Ah

**EQUATION**  
Station b 52+54.30 Bk=  
Station c 52+52.58 Ah

**EQUATION**  
Station a 19+18.73 Bk=  
Station b 19+52.58 Ah

**EQUATION**  
Station 201+13.85 Bk=  
Station a -11+34.45 Ah



9

February 5, 2025

Plotted From - evanwolf

File - ...Sections\Section A\TitleA.dgn

# ESTIMATE OF QUANTITIES AND ENVIRONMENTAL COMMITMENTS

STATE OF SOUTH DAKOTA	PROJECT	SHEET	TOTAL SHEETS
	P 1806(23)186	A1	A5

Rev 12-5-24 pk

## Section B – Grading

BID ITEM NUMBER	ITEM	QUANTITY	UNIT
009E0010	Mobilization	Lump Sum	LS
110E0500	Remove Pipe Culvert	266	Ft
110E0510	Remove Pipe End Section	79	Each
110E0590	Remove Cattle Pass	16	Ft
110E0595	Remove Cattle Pass End Section	2	Each
110E0600	Remove Fence	476	Ft
110E0700	Remove 3 Cable Guardrail	640	Ft
110E0730	Remove Beam Guardrail	92.0	Ft
110E7500	Remove Pipe for Reset	176	Ft
110E7510	Remove Pipe End Section for Reset	12	Each
120E0010	Unclassified Excavation	38,283	CuYd
120E0600	Contractor Furnished Borrow Excavation	24,042	CuYd
120E2000	Undercutting	4,778	CuYd
120E4100	Reprofiling Ditch	22.9	Sta
120E6100	Water for Embankment	432.3	MGal
270E0112	Salvage Granular Material	991.5	Ton
430E0700	Precast Concrete Headwall for Drain	12	Each
450E0143	24" RCP Class 3, Furnish	184	Ft
450E0150	24" RCP, Install	184	Ft
450E2008	18" RCP Flared End, Furnish	29	Each
450E2009	18" RCP Flared End, Install	29	Each
450E2016	24" RCP Flared End, Furnish	14	Each
450E2017	24" RCP Flared End, Install	14	Each
450E2024	30" RCP Flared End, Furnish	2	Each
450E2025	30" RCP Flared End, Install	2	Each
450E4768	24" CMP 14 Gauge, Furnish	86	Ft
450E4770	24" CMP, Install	86	Ft
450E4778	30" CMP 14 Gauge, Furnish	50	Ft
450E4780	30" CMP, Install	50	Ft
450E5020	30" CMP Elbow, Furnish	2	Each
450E5021	30" CMP Elbow, Install	2	Each
450E5211	18" CMP Flared End, Furnish	8	Each
450E5212	18" CMP Flared End, Install	8	Each
450E5215	24" CMP Flared End, Furnish	12	Each
450E5216	24" CMP Flared End, Install	12	Each
450E5314	30" CMP Sloped End, Furnish	1	Each
450E5315	30" CMP Sloped End, Install	1	Each
450E5826	54" CMP Arch Flared End, Furnish	16	Each
450E5827	54" CMP Arch Flared End, Install	16	Each
* 450E8900	Cleanout Pipe Culvert	32	Each
450E8910	Cleanout for Culvert Treatment	10	Each
450E9000	Reset Pipe	176	Ft
450E9001	Reset Pipe End Section	12	Each

BID ITEM NUMBER	ITEM	QUANTITY	UNIT
450E9518	18" Cured in Place Pipe	650	Ft
450E9524	24" Cured in Place Pipe	213	Ft
450E9528	36" Cured in Place Pipe	82	Ft
462E0250	Cellular Grout	20.6	CuYd
620E0020	Type 2 Right-of-Way Fence	80	Ft
620E0030	Type 3 Right-of-Way Fence	70	Ft
620E0520	Type 2 Temporary Fence	150	Ft
620E0530	Type 3 Temporary Fence	176	Ft
620E1030	3 Post Panel	4	Each
629E0110	High Tension 4 Cable Guardrail	566	Ft
629E0290	High Tension Cable Guardrail Anchor Assembly	4	Each
630E1010	Straight Class A W Beam Guardrail with Wood Posts	62.5	Ft
630E1025	Curved Class A W Beam Guardrail with CRT Posts	37.5	Ft
630E2035	W Beam Guardrail Special Anchor Assembly	1	Each
632E2510	Type 2 Object Marker Back to Back	158	Each
680E0204	4" Perforated PVC Drain Pipe with Sleeve	360	Ft
680E0224	4" PVC Outlet Pipe	160	Ft
680E2500	Porous Backfill	171.0	Ton
700E0210	Class B Riprap	99.8	Ton
720E1010	PVC Coated Bank and Channel Protection Gabion	10.5	CuYd
831E0110	Type B Drainage Fabric	160	SqYd
831E0400	Impermeable Plastic Membrane	68	SqYd
900E2030	Miscellaneous Work	11	Site

\* - Denotes Non-Participating

## Section C - Traffic Control

BID ITEM NUMBER	ITEM	QUANTITY	UNIT
260E1030	Base Course, Salvaged	991.5	Ton
634E0010	Flagging	2,000.0	Hour
634E0020	Pilot Car	950.0	Hour
634E0110	Traffic Control Signs	951.5	SqFt
634E0120	Traffic Control, Miscellaneous	Lump Sum	LS
634E0630	Temporary Pavement Marking	108.1	Mile

## INDEX OF SHEETS

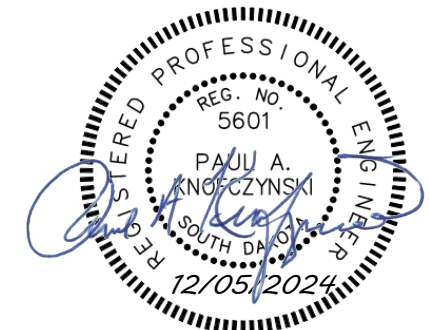
A1 and A2 Estimate of Quantities for Sections B, C, D, E, F, M, and S  
A2 to A5 Environmental Commitments

## Section D - Erosion and Sediment Control

BID ITEM NUMBER	ITEM	QUANTITY	UNIT
110E1690	Remove Sediment	2.3	CuYd
230E0010	Placing Topsoil	26,936	CuYd
730E0100	Cover Crop Seeding	30.0	Bu
730E0210	Type F Permanent Seed Mixture	1,843	Lb
732E0100	Mulching	152.6	Ton
734E0102	Type 2 Erosion Control Blanket	14,342	SqYd
734E0132	Type 2 Turf Reinforcement Mat	200.0	SqYd
734E0154	12" Diameter Erosion Control Wattle	985	Ft
734E0165	Remove and Reset Erosion Control Wattle	246	Ft
734E0510	Shaping for Erosion Control Blanket	1,265	Ft
734E0604	High Flow Silt Fence	2,224	Ft
734E0610	Mucking Silt Fence	124	CuYd
734E0620	Repair Silt Fence	446	Ft

## Section E – Structure 59-388-274

BID ITEM NUMBER	ITEM	QUANTITY	UNIT
410E0030	Structural Steel, Miscellaneous	Lump Sum	LS
700E0210	Class B Riprap	120.7	Ton
831E0110	Type B Drainage Fabric	145	SqYd



## Alternate B

Rev 12-5-24 pk

### Section E – Structure 59-234-176

BID ITEM NUMBER	ITEM	QUANTITY	UNIT
420E0200	Structure Excavation, Box Culvert	31	CuYd
460E0120	Class A45 Concrete, Box Culvert	31.3	CuYd
460E0300	Breakout Structural Concrete	28.2	CuYd
480E0100	Reinforcing Steel	2,365	Lb

BID ITEM NUMBER	ITEM	QUANTITY	UNIT
320E0008	PG 64-34 Asphalt Binder	3,862.3	Ton
320E1002	Class Q2 Hot Mixed Asphalt Concrete	70,017.0	Ton
320E4000	Hydrated Lime	747.9	Ton

### Section M - Pavement Marking

BID ITEM NUMBER	ITEM	QUANTITY	UNIT
633E0010	Cold Applied Plastic Pavement Marking, 4"	14,058	Ft
633E0030	Cold Applied Plastic Pavement Marking, 24"	125	Ft
633E0035	Cold Applied Plastic Pavement Marking, Area	24	SqFt
633E0040	Cold Applied Plastic Pavement Marking, Arrow	10	Each
633E1200	High Build Waterborne Pavement Marking Paint, White	1,545	Gal
633E1205	High Build Waterborne Pavement Marking Paint, Yellow	638	Gal
633E1260	High Build Waterborne Pavement Marking Paint, 24" White	14	Ft
633E5000	Grooving for Cold Applied Plastic Pavement Marking, 4"	14,058	Ft
633E5015	Grooving for Cold Applied Plastic Pavement Marking, 24"	125	Ft
633E5020	Grooving for Cold Applied Plastic Pavement Marking, Area	24	SqFt
633E5025	Grooving for Cold Applied Plastic Pavement Marking, Arrow	10	Each

### Section F – Surfacing

BID ITEM NUMBER	ITEM	QUANTITY	UNIT
009E3320	Checker	Lump Sum	LS
110E1010	Remove Asphalt Concrete Pavement	7,209.3	SqYd
120E0100	Unclassified Excavation, Digouts	1,717	CuYd
120E6200	Water for Granular Material	187.7	MGal
260E1010	Base Course	7,712.6	Ton
260E2030	Gravel Cushion, Salvaged	10,822.1	Ton
260E6000	Granular Material, Furnish	5,411.1	Ton
* 260E6000	Granular Material, Furnish	492.8	Ton
270E0220	Blend and Stockpile Granular Material	10,822.1	Ton
* 270E0220	Blend and Stockpile Granular Material	985.6	Ton
320E1200	Asphalt Concrete Composite	1,617.7	Ton
320E1800	Asphalt Concrete Blade Laid	5,270.9	Ton
320E7008	Grind 8" Rumble Strip or Stripe in Asphalt Concrete	58.9	Mile
320E7028	Grind Centerline Rumble Stripe in Asphalt Concrete	3.4	Mile
320E7030	Grind Sinusoidal Centerline Rumble Stripe in Asphalt Concrete	1.2	Mile
330E0100	SS-1h or CSS-1h Asphalt for Tack	299.0	Ton
330E0210	SS-1h or CSS-1h Asphalt for Flush Seal	115.4	Ton
330E2000	Sand for Flush Seal	1,755.5	Ton
332E0010	Cold Milling Asphalt Concrete	113,651	SqYd
600E0300	Type III Field Laboratory	1	Each
900E1980	Storage Unit	1	Each

\* - Denotes Non-Participating

### Alternate A

BID ITEM NUMBER	ITEM	QUANTITY	UNIT
320E0008	PG 64-34 Asphalt Binder	4,293.6	Ton
320E1002	Class Q2 Hot Mixed Asphalt Concrete	68,407.2	Ton
320E4000	Hydrated Lime	728.2	Ton

### SPECIFICATIONS

Standard Specifications for Roads and Bridges, 2015 Edition and Required Provisions, Supplemental Specifications, and Special Provisions as included in the Proposal.

### ENVIRONMENTAL COMMITMENTS

The SDDOT is committed to protecting the environment and uses Environmental Commitments as a communication tool for the Engineer and Contractor to ensure that attention is given to avoid, minimize, and/or mitigate an environmental impact. Environmental commitments to various agencies and the public have been made to secure approval of this project. An agency with permitting authority can delay a project if identified environmental impacts have not been adequately addressed. Unless otherwise designated, the Contractor's primary contact regarding matters associated with these commitments will be the Project Engineer. During construction, the Project Engineer will verify that the Contractor has met Environmental Commitment requirements. These environmental commitments are not subject to change without prior written approval from the SDDOT Environmental Office.

Additional guidance on SDDOT's Environmental Commitments can be accessed through the Environmental Procedures Manual found at: <https://dot.sd.gov/media/documents/EnvironmentalProceduresManual.pdf>

For questions regarding change orders in the field that may have an effect on an Environmental Commitment, the Project Engineer will contact the Environmental Engineer at 605-773-3180 or 605-773-4336 to determine whether an environmental analysis and/or resource agency coordination is necessary.

Once construction is complete, the Project Engineer will review all environmental commitments for the project and document their completion.

### COMMITMENT A: WETLANDS

All efforts to avoid and minimize wetland impacts from the project have resulted in approximately 0.083 acre(s) of wetlands (includes temporary and permanent) becoming impacted. Refer to Section B – Grading Plans for location and boundaries of the impacted wetlands.



**Table of Impacted Wetlands**

Wetland No.	MRM	Perm. Impact Left (Acres)	Perm. Impact Right (Acres)	Temp. Impact Left (Acres)	Temp. Impact Right (Acres)	Total Impact (Acres)
1	187.286	0.000	0.000	0.004	0.004	0.008
2	190.263	0.000	0.000	0.004	0.004	0.008
3	191.614	0.000	0.000	0.001	0.001	0.002
4	192.313	0.000	0.000	0.001	0.001	0.002
5	194.08	0.000	0.000	0.001	0.001	0.002
6	194.213	0.000	0.000	0.001	0.001	0.002
7	194.878	0.000	0.000	0.001	0.001	0.002
8	195.036	0.000	0.000	0.001	0.001	0.002
9	195.197	0.000	0.000	0.001	0.001	0.002
10	195.433	0.000	0.000	0.001	0.001	0.002
11	195.897	0.000	0.000	0.001	0.001	0.002
12	196.273	0.000	0.000	0.001	0.001	0.002
13	197.377	0.000	0.000	0.001	0.001	0.002
14	197.86	0.000	0.000	0.001	0.001	0.002
15	198.174	0.000	0.000	0.002	0.002	0.004
16	198.522	0.000	0.000	0.001	0.001	0.002
17	198.778	0.000	0.000	0.001	0.001	0.002
18	198.911	0.000	0.000	0.001	0.001	0.002
19	199.768	0.000	0.000	0.001	0.001	0.002
20	200.008	0.000	0.000	0.001	0.001	0.002
21	200.952	0.000	0.000	0.001	0.001	0.002
22	201.42	0.000	0.000	0.001	0.001	0.002
23	201.585	0.000	0.000	0.001	0.001	0.002
24	201.942	0.000	0.000	0.000	0.001	0.001
25	203.484	0.000	0.000	0.000	0.001	0.001
26	203.982	0.000	0.000	0.001	0.001	0.002
27	204.352	0.000	0.000	0.001	0.001	0.002
28	205.917	0.000	0.000	0.001	0.001	0.002
29	207.629	0.000	0.000	0.001	0.001	0.002
30	207.904	0.000	0.000	0.001	0.001	0.002
31	208.068	0.000	0.000	0.001	0.001	0.002
32	209.369	0.000	0.000	0.000	0.001	0.001
33	209.927	0.000	0.000	0.001	0.001	0.002
34	211.351	0.000	0.000	0.001	0.001	0.002
35	211.671	0.000	0.000	0.001	0.001	0.002
36	211.82	0.000	0.000	0.001	0.001	0.002

**Action Taken/Required:**

Mitigation is not required in accordance with the "Statewide Finding Regarding Wetlands for South Dakota Federal-Aid Highway Projects (February 2018)" as all impacts are temporary.

Temporary impacts identified in the Table of Impacted Wetlands will not be mitigated as original contours and elevations will be re-established. Prior to initiating temporary work in wetlands, the Contractor will submit a plan to the Project Engineer in accordance with Section 7.21 D of the Specifications.

The Contractor will notify the Project Engineer if additional easement is needed to complete work adjacent to any wetland. The Project Engineer will obtain an appropriate course of action from the Environmental Office before proceeding with construction activities that affect any wetlands beyond the work limits and easements shown in the plans.

**COMMITMENT B: FEDERALLY THREATENED, ENDANGERED, AND PROTECTED SPECIES**

**COMMITMENT B2: WHOOPING CRANE**

The Whooping Crane is a spring and fall migratory bird in South Dakota that is about 5 feet tall and typically stops on wetlands, rivers, and agricultural lands along their migration route. An adult Whooping Crane is white with a red crown and a long, dark, pointed bill. Immature Whooping Cranes are cinnamon brown. While in flight, their long necks are kept straight and their long dark legs trail behind. Adult Whooping Cranes' black wing tips are visible during flight.

**Action Taken/Required:**

Harassment or other measures to cause the Whooping Crane to leave the site is a violation of the Endangered Species Act. If a Whooping Crane is sighted roosting in the vicinity of the project, borrow pits, or staging areas associated with the project, cease construction activities in the affected area until the Whooping Crane departs and immediately contact the Project Engineer. The Project Engineer will contact the Environmental Office so that the sighting can be reported to USFWS.

**COMMITMENT C: WATER SOURCE**

The Contractor will not withdraw water with equipment previously used outside the State of South Dakota or previously used in aquatic invasive species (AIS) positive waters within South Dakota without prior approval from the SDDOT Environmental Office. To prevent and control the introduction and spread of invasive species into the project vicinity, all equipment will be power washed with hot water (≥140 °F) and completely dried for a minimum of 7 days prior to subsequent use. South Dakota administrative rule 41:10:04:02 forbids the possession and transport of AIS; therefore, all attached dirt, mud, debris and vegetation must be removed and all compartments and tanks capable of holding standing water must be drained. This includes, but is not limited to, all equipment, pumps, lines, hoses and holding tanks.

**COMMITMENT D: WATER QUALITY STANDARDS**

**COMMITMENT D1: SURFACE WATER QUALITY**

The Missouri River is classified as a cold water permanent fishery with a total suspended solids standard of less than 30 mg/L 30-day average, less than 53 mg/L daily maximum.

The Missouri River is classified for fish and wildlife propagation, recreation, irrigation, and stock watering waters. Because of these beneficial uses, special construction measures may have to be taken to ensure that this water body is not impacted.

This project may be in the vicinity of multiple streams and wetlands. These waters are considered waters of the state and are protected under Administrative Rules of South Dakota (ARSD) Chapter 74:51. Special construction measures may have to be taken to ensure that this water body is not impacted.

**Action Taken/Required:**

The Contractor is advised that the South Dakota Surface Water Quality Standards, administered by the South Dakota Department of Agriculture and Natural Resources (DANR), apply to this project. Special construction measures will be taken to ensure the above standard(s) of the surface waters are maintained and protected.

**COMMITMENT D2: SURFACE WATER DISCHARGE**

The DANR General Permit for Temporary Discharge is required for temporary dewatering and discharges to waters of the state. The effluent limit for total suspended solids will be 90 mg/L 30-day average. The effluent limit applies to discharges to all waters of the state except discharges to waters classified as cold water permanent fish life propagation waters according to the ARSD 74:51:01:45. For discharges to waters of the state classified as cold water permanent fish life propagation waters, the effluent limit for total suspended solids will be 53 mg/L daily maximum.

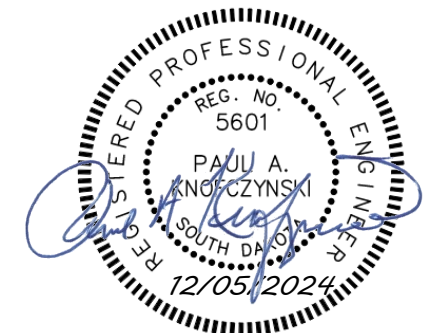
The permittee has the option of completing effluent testing or implementing a pollution prevention plan for compliance with this permit. If the permittee develops a pollution prevention plan instead of total suspended solids sampling, the plan must be developed and implemented prior to discontinuing total suspended solids sampling. Refer to Section 4.0 of the permit. If any pollutants are suspected of being discharged, a sample must be taken for those parameters listed in Section 3.4 of the permit.

Refer to Commitment D1: Surface Water Quality for stream classification.

**Action Taken/Required:**

If construction dewatering is required and this project is currently covered under a General Permit for Stormwater Discharges Associated with Construction Activities, the contractor will need to submit the dewatering information to the SDDANR using the following form:

< [https://danr.sd.gov/OfficeOfWater/SurfaceWaterQuality/docs/DANR\\_AddTempInfoFillable.pdf](https://danr.sd.gov/OfficeOfWater/SurfaceWaterQuality/docs/DANR_AddTempInfoFillable.pdf) >



STATE OF SOUTH DAKOTA	PROJECT	SHEET	TOTAL SHEETS
	P 1806(23)186	A4	A5

**COMMITMENT D2: SURFACE WATER DISCHARGE (Continued)**

The Contractor will provide a copy of the approved permit or the submitted dewatering information to the Project Engineer prior to proceeding with any dewatering activities. The approved permit or submitted dewatering information must be kept on-site and as part of the project records.

Effluent monitoring, as a result of dewatering activities, will be summarized for each month and recorded on a separate Discharge Monitoring Report (DMR) and submitted to DANR monthly. Additional information can be found at:

<  
<https://danr.sd.gov/OfficeOfWater/SurfaceWaterQuality/swdpermitting/Ereporting.aspx> >

**COMMITMENT E: STORM WATER**

Construction activities constitute 1 acre or more of earth disturbance and/or work in a waterway.

**Action Taken/Required:**

The DANR General Permit for Stormwater Discharges Associated with Construction Activities is required for construction activity disturbing one or more acres of earth and work in a waterway. The SDDOT is the owner of this permit and will submit the NOI to DANR 15 days prior to project start in order to obtain coverage under the General Permit. Work can begin once the DANR letter of approval is received.

The Contractor must adhere to the "Special Provision Regarding Storm Water Discharges to Waters of the State."

The Contractor will complete the DANR Contractor Certification Form prior to the pre-construction meeting. The form certifies under penalty of law that the Contractor understands and will comply with the terms and conditions of the permit for this project. Work may not begin on this project until this form is signed and submitted to DANR.

The form can be found at:

<  
[https://danr.sd.gov/OfficeOfWater/SurfaceWaterQuality/docs/DANR\\_CGPAppendixCCA2018Fillable.pdf](https://danr.sd.gov/OfficeOfWater/SurfaceWaterQuality/docs/DANR_CGPAppendixCCA2018Fillable.pdf) >

The Contractor is advised that permit coverage may also be required for off-site activities, such as borrow and staging areas, which are the responsibility of the Contractor.

**Storm Water Pollution Prevention Plan**

The Storm Water Pollution Prevention Plan (SWPPP) will be developed prior to the submittal of the NOI and will be implemented for all construction activities for compliance with the permit. The SWPPP must be kept on-site and updated as site conditions change. Erosion control measures and best management practices will be implemented in accordance with the SWPPP.

The DOT 298 Form will be used for site inspections and to document changes to the SWPPP. A copy of the completed inspection form will be filed with the SWPPP documents and retained for a minimum of three years.

The inspection will include disturbed areas of the construction site that have not been finally stabilized, areas used for storage materials, structural control measures, and locations where vehicles enter or exit the site. These areas will be inspected for evidence of, or the potential for, pollutants entering the drainage system. Erosion and sediment control measures identified in the SWPPP will be observed to ensure that they are operating correctly, and sediment is not tracked off the site.

Information on storm water permits and SWPPPs are available on the following websites:

SDDOT: < <https://dot.sd.gov/doing-business/environmental/stormwater> >

DANR:<  
<https://danr.sd.gov/OfficeOfWater/SurfaceWaterQuality/stormwater/default.aspx> >

EPA: < <https://www.epa.gov/npdes> >

**COMMITMENT H: WASTE DISPOSAL SITE**

The Contractor will furnish a site(s) for the disposal of construction and/or demolition debris generated by this project.

**Action Taken/Required:**

Construction and/or demolition debris may not be disposed of within the Public ROW.

The waste disposal site(s) will be managed and reclaimed in accordance with the following from the General Permit for Construction/Demolition Debris

Disposal Under the South Dakota Waste Management Program issued by the Department of Agriculture and Natural Resources.

The waste disposal site(s) will not be located in a wetland, within 200 feet of surface water, or in an area that adversely affects wildlife, recreation, aesthetic value of an area, or any threatened or endangered species, as approved by the Environmental Office and the Project Engineer.

If the waste disposal site(s) is located such that it is within view of any ROW, the following additional requirements will apply:

1. Construction and/or demolition debris consisting of concrete, asphalt concrete, or other similar materials will be buried in a trench separate from wood debris. The final cover over the construction and/or demolition debris will consist of a minimum of 1 foot of soil capable of supporting vegetation. Waste disposal sites provided outside of the Public ROW will be seeded in accordance with Natural Resources Conservation Service recommendations. The seeding recommendations may be obtained through the appropriate County NRCS Office. The Contractor will control the access to waste disposal sites not within the Public ROW with fences, gates, and placement of a sign or signs at the entrance to the site stating, "No Dumping Allowed".

2. Concrete and asphalt concrete debris may be stockpiled within view of the ROW for a period not to exceed the duration of the project. Prior to

Rev 12-5-24 pk  
 project completion, the waste will be removed from view of the ROW or buried, and the waste disposal site reclaimed as noted above.

The above requirements will not apply to waste disposal sites that are covered by an individual solid waste permit as specified in SDCL 34A-6-58, SDCL 34A-6-1.13, and ARSD 74:27:10.06.

Failure to comply with the requirements stated above may result in civil penalties in accordance with South Dakota Solid Waste Law, SDCL 34A-6-1.31.

All costs associated with furnishing waste disposal site(s), disposing of waste, maintaining control of access (fence, gates, and signs), and reclamation of the waste disposal site(s) will be incidental to the various contract items.

**COMMITMENT I: HISTORIC PRESERVATION OFFICE CLEARANCES**

The SDDOT has obtained concurrence with the State Historic Preservation Office for all work included within the project limits and all department designated sources and designated option material sources, stockpile sites, storage areas, and waste sites provided within the plans.

**Action Taken/Required:**

All earth disturbing activities not designated within the plans require a cultural resource review prior to scheduling the pre-construction meeting. This work includes but is not limited to: Contractor furnished material sources, material processing sites, stockpile sites, storage areas, plant sites, and waste areas.

The Contractor will arrange and pay for a record search and when necessary, a cultural resource survey. The Contractor has the option to contact the state Archaeological Research Center (ARC) at 605-394-1936 or another qualified archaeologist, to obtain either a records search or a cultural resources survey. A record search might be sufficient for review if the site was previously

surveyed; however, a cultural resources survey may need to be conducted by a qualified archaeologist.

The Contractor will provide ARC with the following: a topographical map or aerial view in which the site is clearly outlined, site dimensions, project number, and PCN. If applicable, provide evidence that the site has been previously disturbed by farming, mining, or construction activities with a landowner statement that artifacts have not been found on the site.

The Contractor will submit the cultural resources survey report to SDDOT Environmental Office, 700 East Broadway Avenue, Pierre, SD 57501-2586. SDDOT will submit the information to the appropriate SHPO/THPO. Allow **30 Days** from the date this information is submitted to the Environmental Engineer for SHPO/THPO review.



**COMMITMENT I: HISTORIC PRESERVATION OFFICE CLEARANCES  
(Continued)**

In the event of an inadvertent discovery of human remains, funerary objects, or if evidence of cultural resources is identified during project construction activities, then such activities within 150 feet of the inadvertent discovery will immediately cease and the Project Engineer will be immediately notified. The Project Engineer will contact the SDDOT Environmental Office, who will contact the appropriate SHPO/THPO within 48 hours of the discovery to determine an appropriate course of action.

SHPO/THPO review does not relieve the Contractor of the responsibility for obtaining any additional permits and clearances for Contractor furnished material sources, material processing sites, stockpile sites, storage areas, plant sites, and waste areas that affect wetlands, threatened and endangered species, or waterways. The Contractor will not utilize a site known or suspected of having contaminated soil or water. The Contractor will provide the required permits and clearances to the Project Engineer at the preconstruction meeting.

**COMMITMENT M: SECTION 4(f)/6(f) RESOURCES**

**COMMITMENT M1: SECTION 4(f) PROPERTY**

The following Section 4(f) property is located adjacent to this project.

Station	Section 4(f) Property
a31+65 to b84+93 L	Oahe Downstream Recreational Area
d15+83 to d48+94 R	Oahe Downstream Recreational Area
51+50 to 115+50 R	ESS1
54+32 L/R	ESS2
671+50 to 683+50 R	ESS3

**Action Taken/Required:**

The following measures are required to minimize harm to the above Section 4(f) property:

The contractor shall notify the Project Engineer if addition temporary or permanent easement is necessary to construct the project. Temporary occupancy and permanent incorporation of, and restriction of access to, the Section 4(f) property must be avoided unless there are no feasible or prudent alternatives to use of the land and the action includes all possible planning to minimize harm to the property. Section 4(f) use must be approved by the Federal Highway Administration.

**COMMITMENT N: SECTION 404 PERMIT**

The SDDOT has obtained a Section 404 Permit from the USACE for the permanent actions associated with this project.

**Action Taken/Required:**

The Contractor will comply with all requirements contained in the Section 404 Permit.

The Contractor will also be responsible for obtaining a Section 404 Permit for any dredge, excavation, or fill activities associated with material sources, storage areas, waste sites, and Contractor work sites outside the plan work limits that affect wetlands, floodplains, or waters of the United States.

**COMMITMENT Q: ARCHAEOLOGICAL COORDINATION**

As a result of a Cultural Resources Survey, historic properties have been identified within and/or adjacent to the project rights-of-way.

The following historic properties have been identified that require avoidance of construction activities:

**Table of Historic Properties**

Station	Offset (Ft.)	L/R	Environmental Sensitive Site	Action
Approx. 51+50 to 115+50	115	R	ESS 1 / Oahe Dam Downstream Fort Pierre Trail	Do Not Disturb
Approx. 54+32	30	L/R	ESS 2	Do Not Disturb
Approx. 671+50 to 683+50	25	R	ESS 3	Do Not Disturb

The locations and boundaries of the site(s) for avoidance are shown in project plans.

**Action Taken/Required:**

If evidence for cultural resources is uncovered during project construction activities, then such activities within 150 feet of the inadvertent discovery will immediately cease and the Project Engineer will be immediately notified. The Project Engineer will contact the SDDOT Environmental Office, who will consult with the Archaeological Research Center (ARC) and FHWA to determine the appropriate course of action.

All artifacts, features, or other items of interest uncovered by project construction activities will not be displaced unless the landowner and the SHPO consent to it.

These identified sites cannot be used for material sources, storage areas, waste sites, and/or any other project related activities outside the plan work limits.

**COMMITMENT T: SECTION 408 AUTHORIZATION**

This project partially occurs on US Army Corps of Engineers (USACE) Works (Oahe Dam). Section 408 Authorization from the USACE is required prior to temporary occupancy and construction activities on the USACE lands identified in the Table of USACE Works below.

The contractor must adhere to the Special Provision for 408 Authorization restricting work on USACE Works prior to Section 408 Authorization.

The contractor must adhere to the conditions of the Section 408 Authorization.

**Table of USACE Works**

Station	Offset	L/R	USACE Works	Action
Approx. c0+00 to d135+10	115	L/R	Oahe Dam	408 Authorization required
Approx. a115+50 to b22+33	30	L/R	Oahe Dam	408 Authorization required

