

# SECTION M: PAVEMENT MARKING PLANS



STATE OF  
SOUTH  
DAKOTA

PROJECT

P 1806(23)186

SHEET

M1

TOTAL  
SHEETS

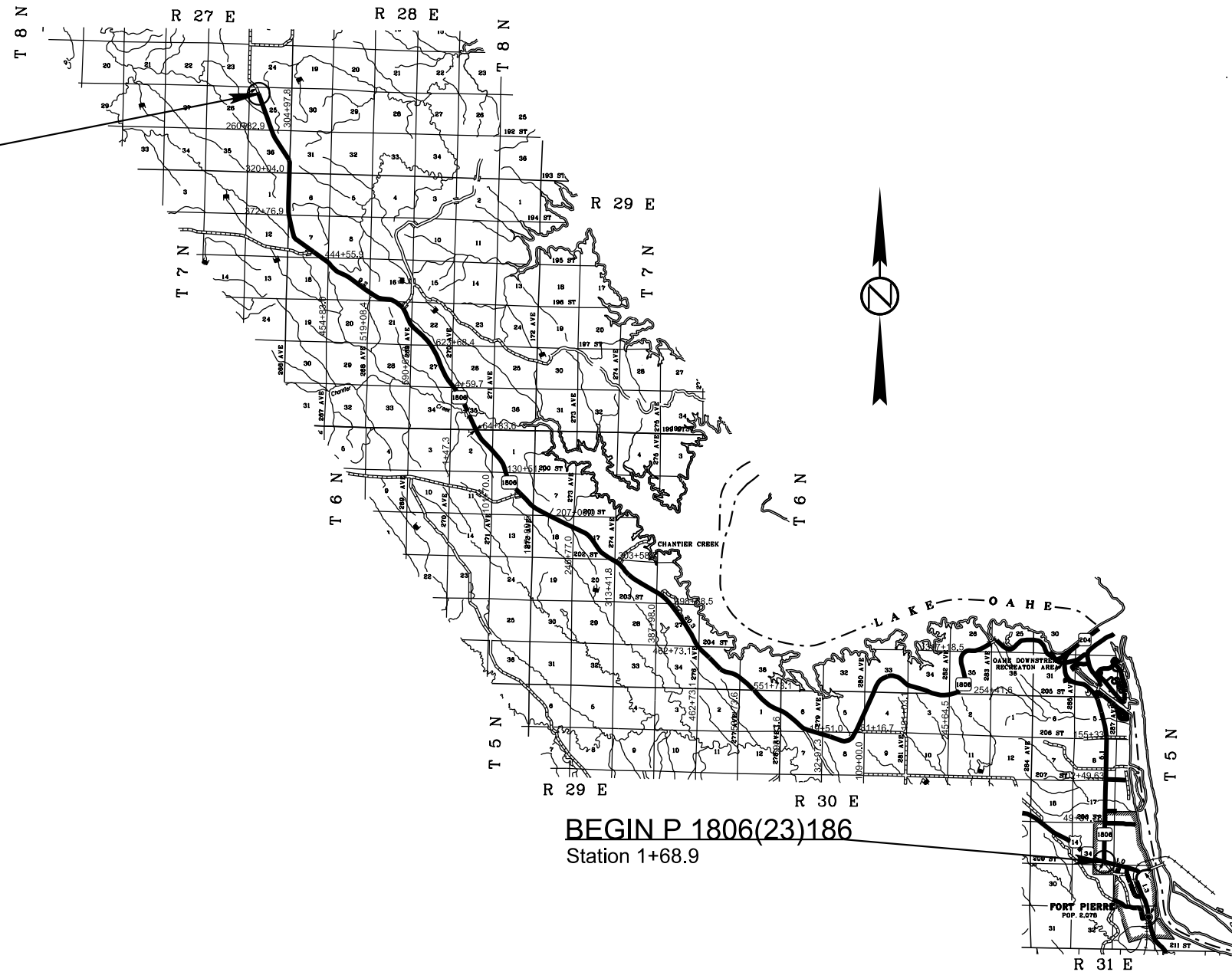
M6

Plotting Date: 7/24/2023

## INDEX OF SHEETS

M1	General Layout with Index
M2-M?	Estimate with General Notes & Tables
M?-M?	Pavement Marking Layouts
M?-M?	Standard Plates

END P 1806(23)186  
Station h 213+52



BEGIN P 1806(23)186  
Station 1+68.9



**SECTION M ESTIMATE OF QUANTITIES**

BID ITEM NUMBER	ITEM	QUANTITY	UNIT
633E0010	Cold Applied Plastic Pavement Marking, 4"	14,058	Ft
633E0030	Cold Applied Plastic Pavement Marking, 24"	125	Ft
633E0035	Cold Applied Plastic Pavement Marking, Area	24	SqFt
633E0040	Cold Applied Plastic Pavement Marking, Arrow	10	Each
633E1200	High Build Waterborne Pavement Marking Paint, White	1,545	Gal
633E1205	High Build Waterborne Pavement Marking Paint, Yellow	638	Gal
633E1260	High Build Waterborne Pavement Marking Paint, 24" White	14	Ft
633E5000	Grooving for Cold Applied Plastic Pavement Marking, 4"	14,058	Ft
633E5015	Grooving for Cold Applied Plastic Pavement Marking, 24"	125	Ft
633E5020	Grooving for Cold Applied Plastic Pavement Marking, Area	24	SqFt
633E5025	Grooving for Cold Applied Plastic Pavement Marking, Arrow	10	Each

**PAVEMENT MARKING PAINT**

All materials will be applied as per the manufacturer's recommendations.

The Contractor will advise the Engineer a minimum of 3 weeks prior to the application of the permanent pavement marking to allow the State to check and mark the location of no passing zones

The application of permanent pavement marking will begin no sooner than 7 calendar days following completion of the fog or flush seal. Application of permanent pavement marking will be completed within 14 calendar days following completion of the final surfacing.

**COLD APPLIED PLASTIC PAVEMENT MARKING**

All materials will be applied as per the manufacturer's recommendations.

Cold Applied Plastic Pavement Markings will be 3M Series 380 AW or an approved equal.

**GROOVING FOR COLD APPLIED PLASTIC PAVEMENT MARKING**

The Contractor will establish a positive means for the removal of the grinding and/or grooving residue. Residue from dry grooving will be vacuumed. Solid residue will be removed from the pavement surfaces before being blown by traffic action or wind. The Contractor will conduct this work to control and minimize airborne dust and similar debris that may become a hazard to motor vehicle operation or nuisance to property owners. Residue from wet grooving will not be permitted to flow across lanes being used by public traffic or into gutter or drainage facilities. Residue, whether in solid or slurry form, will be disposed of in a manner that will prevent it from reaching any waterway in a concentrated state. The cleaning of the residue for grooving will be to the satisfaction of the Engineer and may require more than one pass to adequately remove material. All costs for removal of grinding and/or grooving residue will be included in the contract unit price per foot or each, for "Grooving for Cold Applied Plastic Pavement Marking" contract items.

**HIGH BUILD WATERBORNE PAVEMENT MARKING PAINT**

All materials will be applied as per manufacturer's recommendations. High build waterborne pavement marking paint will conform to the supplemental specifications for Section 980.1 B.

Reflective media will consist of glass beads. Reflective media will require a Certificate of Compliance for Certification for each source and lot. Acceptance sampling will not be required.

**RATES OF MATERIALS FOR HIGH BUILD WATERBORNE PAVEMENT MARKING PAINT**

Solid 4" line = 22.5 Gals/Mile  
Dashed 4" line = 6.2 Gal/Mile  
Glass Beads = 8 Lbs/Gal.

All cost for materials, labor and equipment necessary to furnish and install the pavement markings will be incidental to the contract unit price for the respective High Build Waterborne Pavement Marking Paint items.



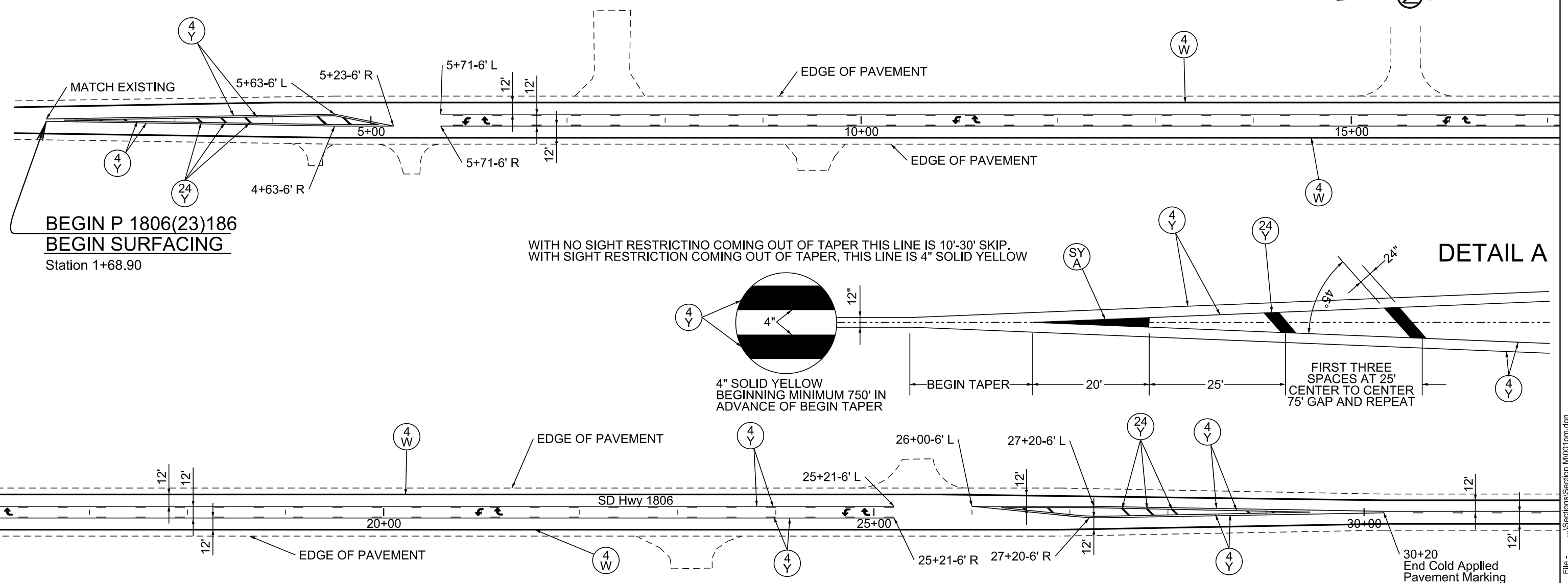
# PAVEMENT MARKING LAYOUT

## SD Hwy 1806

Plotting Date: 8/14/2023



Plot Scale - 1:100



Estimate of Quantities (SD Hwy 1806)			
KEY	ITEM	QUANTITY	UNIT
4 W	Cold Applied Plastic Pavement Marking, 4" White	5798	Ft
4 Y	Cold Applied Plastic Pavement Marking, 4" Yellow	8260	Ft
24 Y	Cold Applied Plastic Pavement Marking, 24" Yellow	125	Ft
	Cold Applied Plastic Pavement Marking, Arrow	10	Each
SY A	Cold Applied Plastic Pavement Marking, Area	24	SqFt
	Grooving for Cold Applied Plastic Pavement Marking, 4"	14058	Ft
	Grooving for Cold Applied Plastic Pavement Marking, 24"	125	Ft
	Grooving for Cold Applied Plastic Pavement Marking, Arrow	10	Each
	Grooving for Cold Applied Plastic Pavement Marking, Area	24	SqFt



Plotted From - jenbrassfield

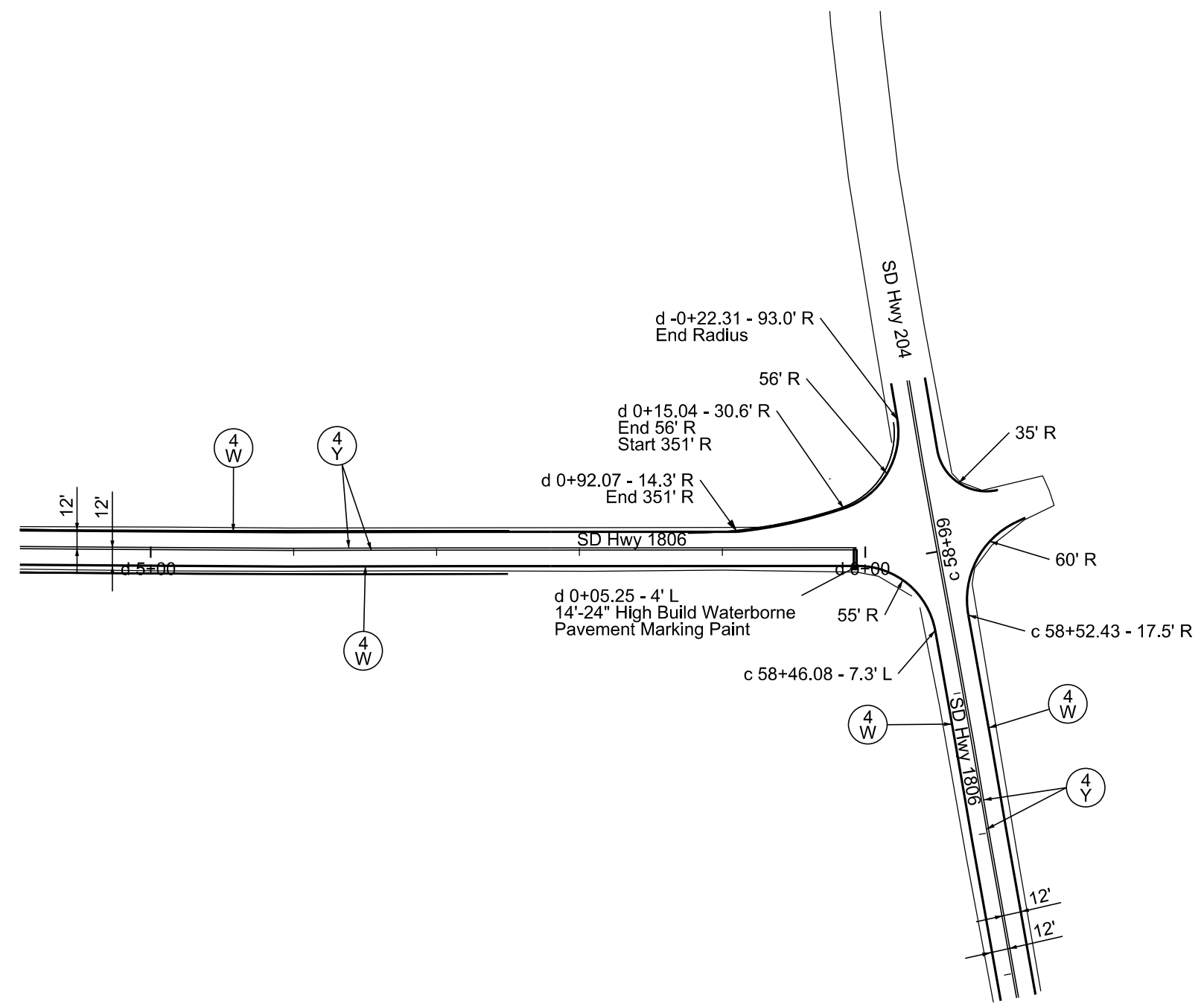
File - ...Sections\Section M001pm.dgn

# PAVEMENT MARKING LAYOUT SD Hwy 1806

STATE OF SOUTH DAKOTA	PROJECT	SHEET	TOTAL SHEETS
	P 1806(23)186	M4	M6

Plotting Date: 8/14/2023

Plot Scale - 1:100



Plotted From - jenbrassfield

File - ... \Sections\Section M\000pm.dgn



# TYPICAL PAVEMENT MARKING LAYOUT

## SD HWY 1806



STATE OF SOUTH DAKOTA

PROJECT  
P 1806(23)186

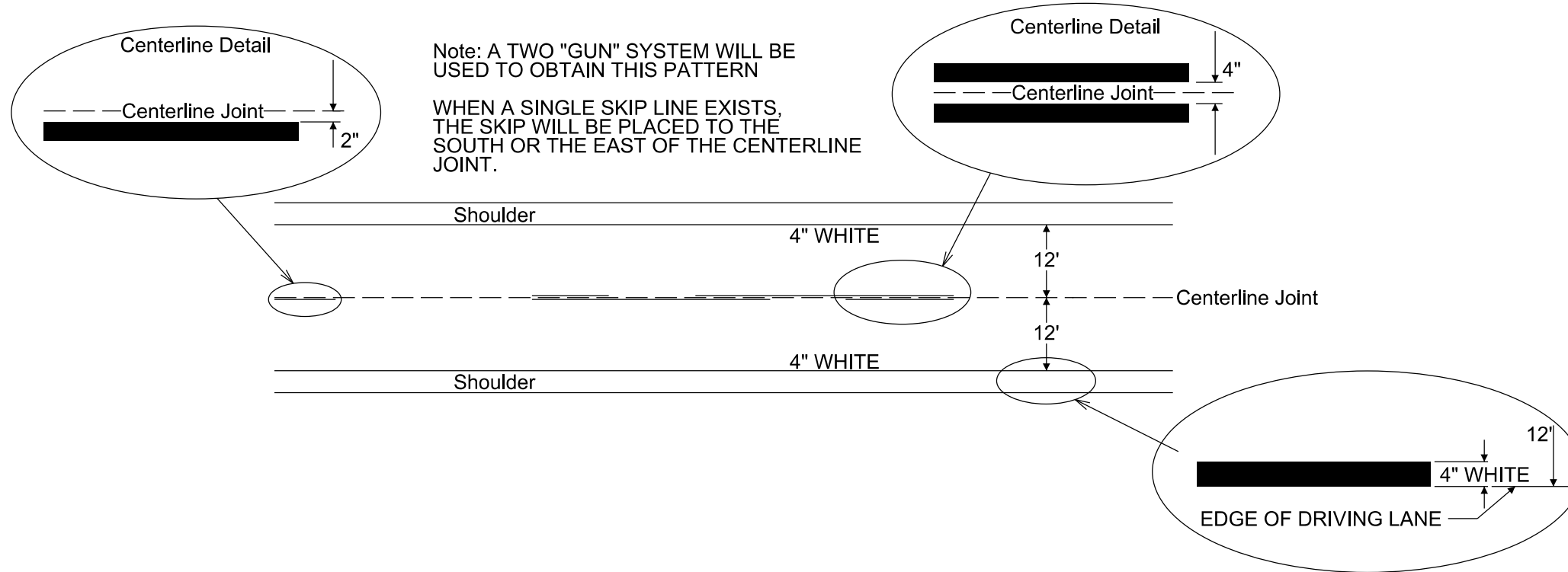
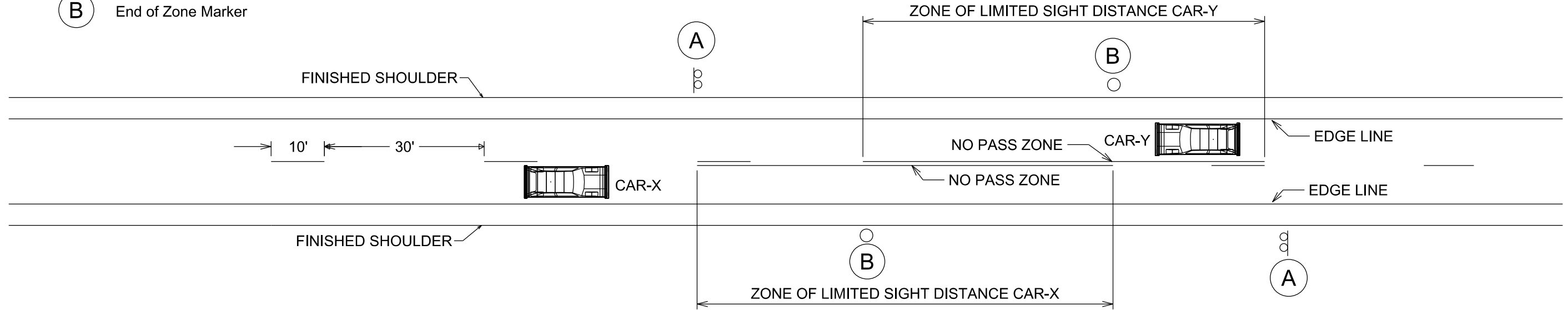
SHEET  
M5

TOTAL SHEETS  
M6

Plotting Date: 7/7/2023



**B** End of Zone Marker



Plot Scale - 1:20

Plotted From - sydnevmarczak

File - ... \Section M \Details \seed3a.dgn

