

SECTION S: PERMANENT SIGNING PLANS



STATE OF
SOUTH
DAKOTA

PROJECT

P 1806(23)186

SHEET

S1

TOTAL
SHEETS

S5

Plotting Date: 8/2/2023

INDEX OF SHEETS

S1
S2
S3-S5

General Layout with Index
Estimate with General Notes and Tables
Standard Plates



END P 1806(23)186
Station h 213+52

BEGIN P 1806(23)186
Station 1+68.9



SECTION S ESTIMATE OF QUANTITIES

BID ITEM NUMBER	ITEM	QUANTITY	UNIT
110E7150	Remove Sign for Reset	80	Each
110E7152	Remove Delineator for Reset	750	Each
632E2022	4"x4" White Delineator Back to Back with 1.12 Lb/Ft Post	50	Each
632E2028	4" Tubular White Delineator with 1.12 Lb/Ft Post	32	Each
632E2100	Reset Delineator	750	Each
632E2220	Guardrail Delineator	4	Each
632E2510	Type 2 Object Marker Back to Back	4	Each
632E3500	Reset Sign	80	Each

GENERAL PERMANENT SIGNING

The Contractor will be responsible for contacting South Dakota One Call to locate the utilities at the staked sign installation locations.

Delineators will be placed as per the Standard Plates.

REMOVE SIGN FOR RESET AND RESET SIGN

Signs at the intersection of SD1806/SD204 will be dismantled and reassembled to the extent needed by the Contractor to properly reset the sign. Signs will be handled with care so that the existing signs, posts, and bases are not damaged during the relocation process. The Contractor will replace and pay for any reset signs damaged in their care. The existing guide and destination signing will be temporarily reset, as directed by the Engineer, to provide direction to travelers at the intersection. Existing stop signs will be temporarily reset during the shoulder modifications at each intersection.

All costs for removing, dismantling, and disposing of any existing posts will be incidental to the contract unit price per each for "Remove Sign for Reset". All costs for temporarily placement and then resetting the existing signs at the new permanent locations will be incidental to the contract unit price per each for "Reset Sign". All quantities for Remove Sign for Reset and Reset Sign will be per assembly at the contract unit price per each.

All removed signs will be reset at the existing location, at the offsets required by the MUTCD.

REMOVE DELINEATOR FOR RESET AND RESET DELINEATOR

Delineators and Type 2 Object Makers, Back-to-Back, affected by construction, will be removed and stored by the Contractor. Delineators and object markers will be handled with care so that they are not damaged during the relocation process. The Contractor will replace and pay for any reset delineators or object markers damaged in their care.

All costs for removing and storing the delineators and object markers will be incidental to the contract unit price per each for "Remove Delineator for Reset". All costs for resetting the existing delineators and object markers will be incidental to the contract unit price per each for "Reset Delineator".

MILEAGE REFERENCE MARKERS

Mileage Reference Markers (MRMs) are not to be disturbed. If an MRM is attached to a sign listed for replacement it will be salvaged and reattached to the new sign in the same location. Payment for this work will be incidental to the various signing contract items.

DELINEATORS

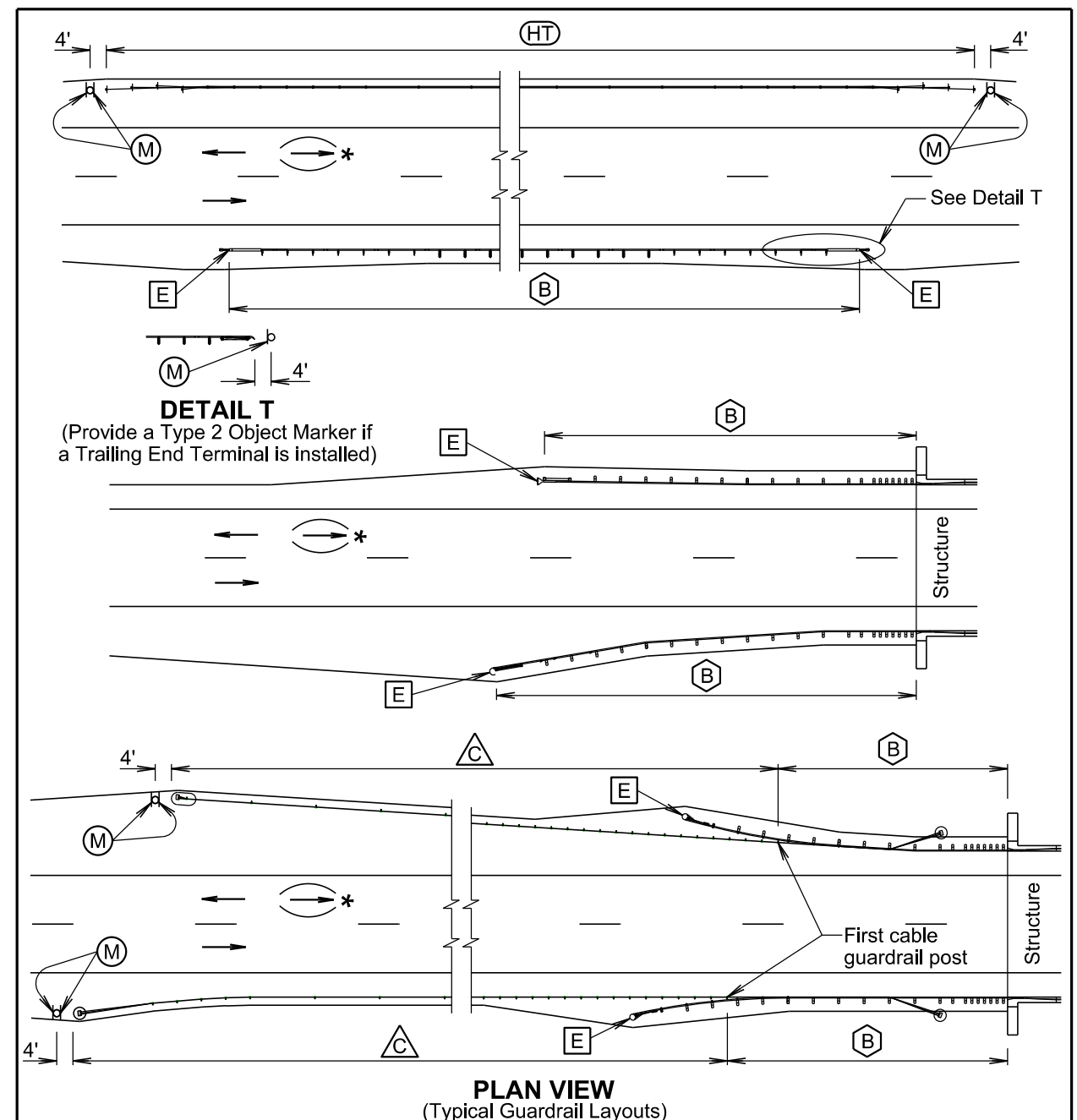
Delineators will be removed and reset as per the notes on this sheet. It is expected that there will be missing or damaged delineators along the route that will need to be installed. A quantity of 4"x4" White Delineator Back to Back with 1.12 Lb/Ft Post has been included to replace missing delineators. Cost associated with furnishing and installing the missing delineators will be incidental to the contract unit price per each for 4"x4" White Delineator Back to Back with 1.12 Lb/Ft Post.

4" Tubular White Delineators will be installed at the intersections of SD1806/SD204, SD1806/Cut Across Road, and SD1806/Sansarc Road, as per Standard Plate 632.44. Cost associated with furnishing and installing the tubular delineators will be incidental to the contract unit price per each for 4" Tubular White Delineators.

GUARDRAIL DELINEATORS

Guardrail delineators will be installed on new W beam guardrail, as per Standard Plate 632.40. Cost for furnishing and installing the guardrail delineators will be at the contract unit price per each for Guardrail Delineator.



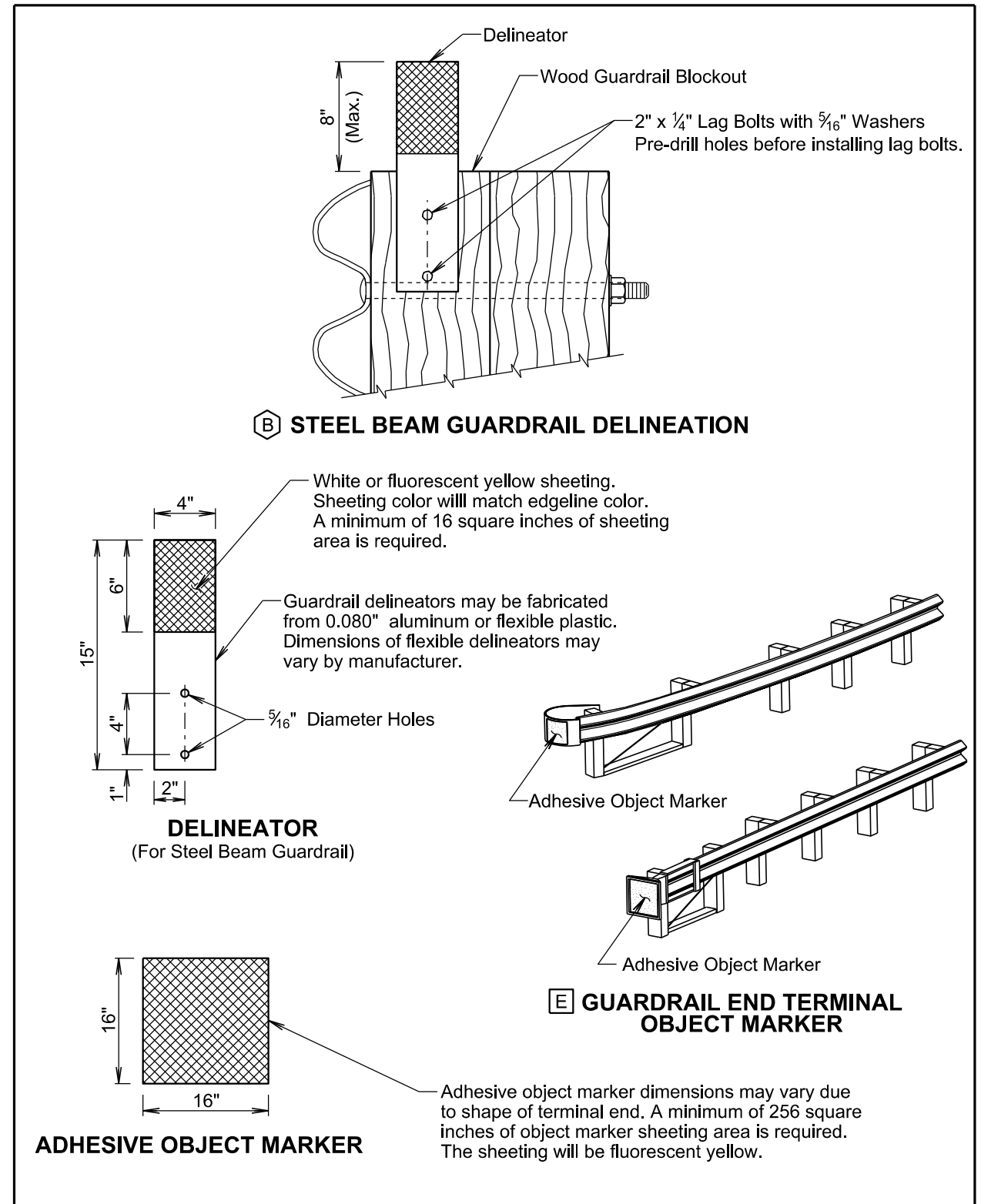


- (B)** Steel Beam Guardrail Delineation
- (HT)** High Tension Cable Guardrail Delineation
- (E)** Guardrail End Terminal Object Marker
- (M)** Type 2 Object Marker
- (C)** 3 Cable Guardrail (Low Tension) Delineation

* For two-way traffic, install delineation at the opposite end of structure the same as shown. Back-to-back delineation is required for two-way traffic, single-sided delineation for one-way traffic.

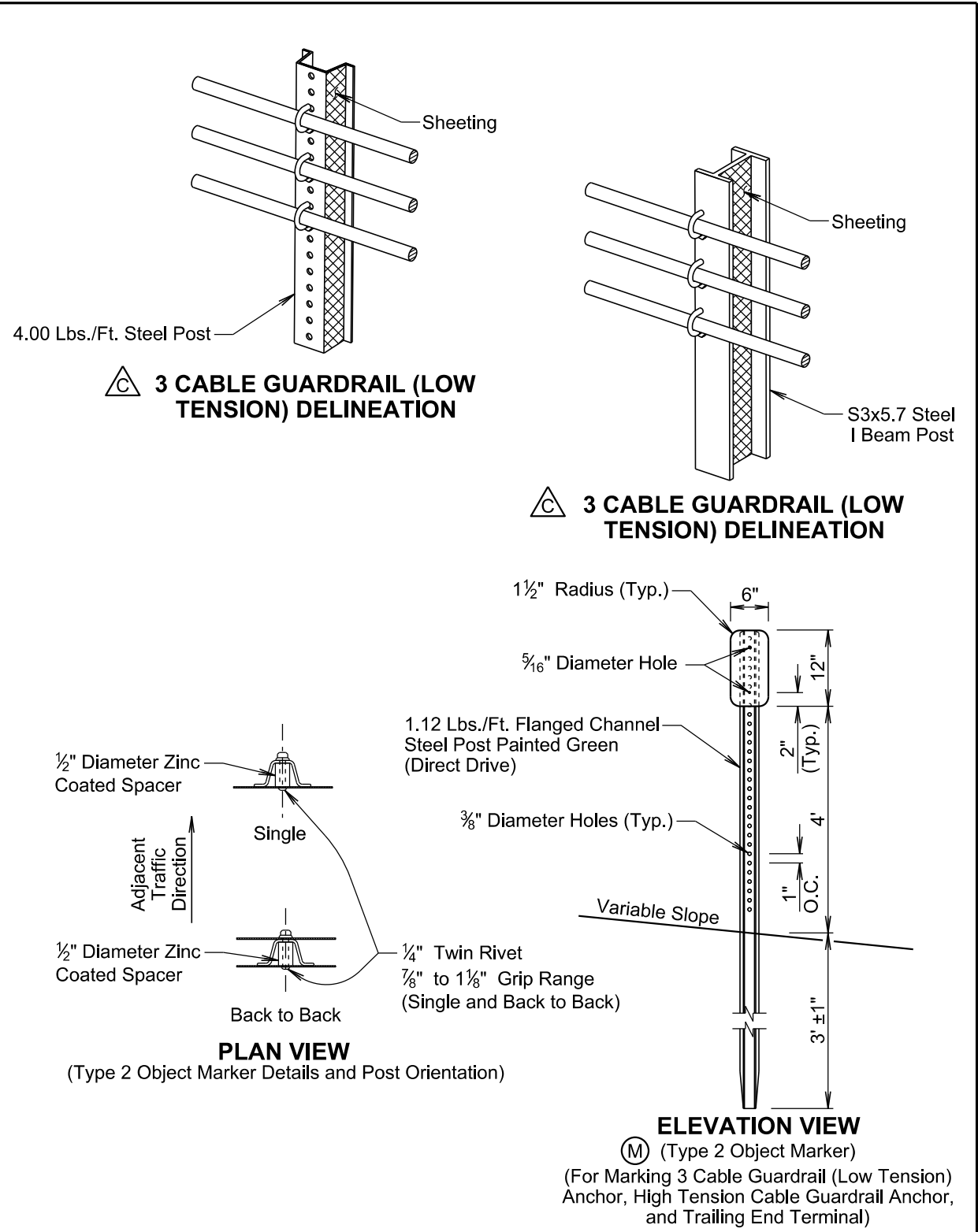
December 23, 2019

Published Date: 2024	S D D O T	DELINEATION OF GUARDRAIL	PLATE NUMBER 632.40
			Sheet 1 of 4



December 23, 2019

Published Date: 2024	S D D O T	DELINEATION OF GUARDRAIL	PLATE NUMBER 632.40
			Sheet 2 of 4



December 23, 2019

S D D O T	DELINEATION OF GUARDRAIL	PLATE NUMBER 632.40
		Sheet 3 of 4
		Published Date: 2024

GENERAL NOTES:

The delineation of high tension cable guardrail will be reflective sheeting placed back to back on every other post cap or cable spacer. The sheeting will be type XI in conformance with ASTM D4956. The color of the reflective sheeting shall be the same as the nearest pavement marking.

The delineators for steel beam guardrail and sheeting on 3 cable guardrail (low tension) posts will be covered with a minimum of 16 square inches of reflective sheeting. The reflective sheeting will be type XI in conformance with ASTM D4956. Along two-way roadways the sheeting will be on both sides of the delineators and guardrail posts and will be white in color. For one-way roadways the sheeting will only be required on the side facing traffic and the color will be the same as the nearest pavement marking, yellow on the left side of the roadway and white on the right side.

When steel beam guardrail is attached to a bridge the first delineator will be attached to the post nearest the bridge.

At bridges with guardrail less than 200 feet in length, a minimum of 4 delineators will be placed in addition to the end terminal yellow object marker. The spacing between the delineators will be approximately one third of the length of the guardrail.

At bridges with guardrail 200 feet and greater in length, including bridges that have steel beam guardrail transitioning to 3 cable guardrail (low tension), the delineators will be placed at a spacing of approximately 50 feet. Delineation will extend throughout the length of the guardrail system.

Steel beam guardrail that is not attached to a bridge and is less than 200 feet in length, a minimum of 4 delineators will be placed in addition to the end terminal yellow object markers. The spacing between the delineators will be approximately one third of the length of the guardrail.

Steel beam guardrail that is not attached to a bridge and is 200 feet and greater in length, including steel beam guardrail transitioning to 3 cable guardrail (low tension), the delineators will be placed at a spacing of approximately 50 feet. Delineation will extend throughout the length of the guardrail system.

All costs for furnishing and installing single or back to back guardrail delineation on 3 cable guardrail and steel beam guardrail will be included in the contract unit price per each for "Guardrail Delineator".

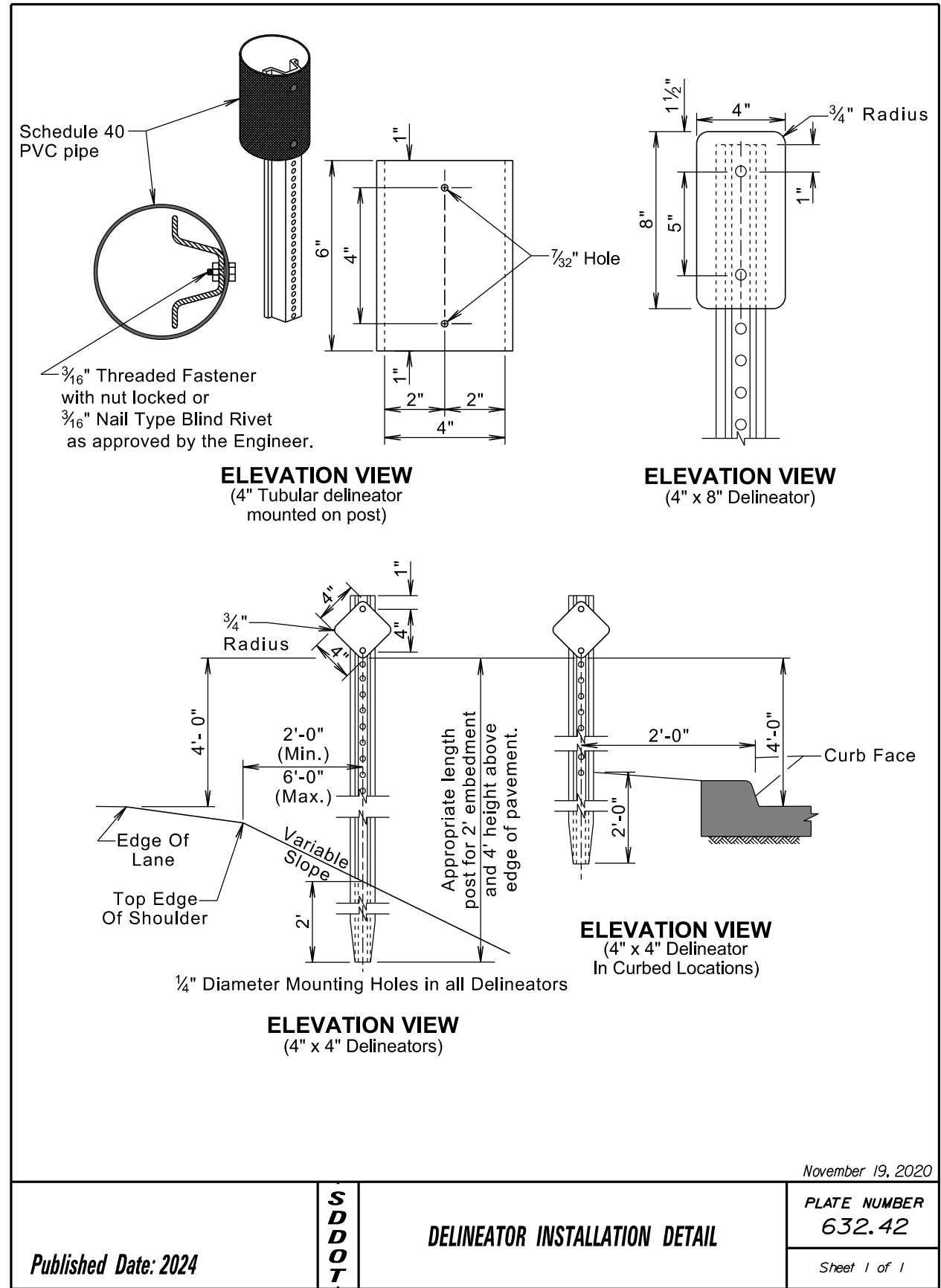
All costs for furnishing and installing the reflective sheeting on the cable spacers or post caps for the high tension cable guardrail will be incidental to the respective high tension cable guardrail contract item.

An adhesive object marker will be placed on the end of the W beam guardrail or MGS end terminal. The adhesive object marker dimensions may vary due to the shape of the terminal end. A minimum of 256 square inches of object marker reflective sheeting area is required. The reflective sheeting will be fluorescent yellow type XI sheeting in conformance with ASTM D4956. All costs for furnishing and installing the adhesive object marker will be incidental to various contract items.

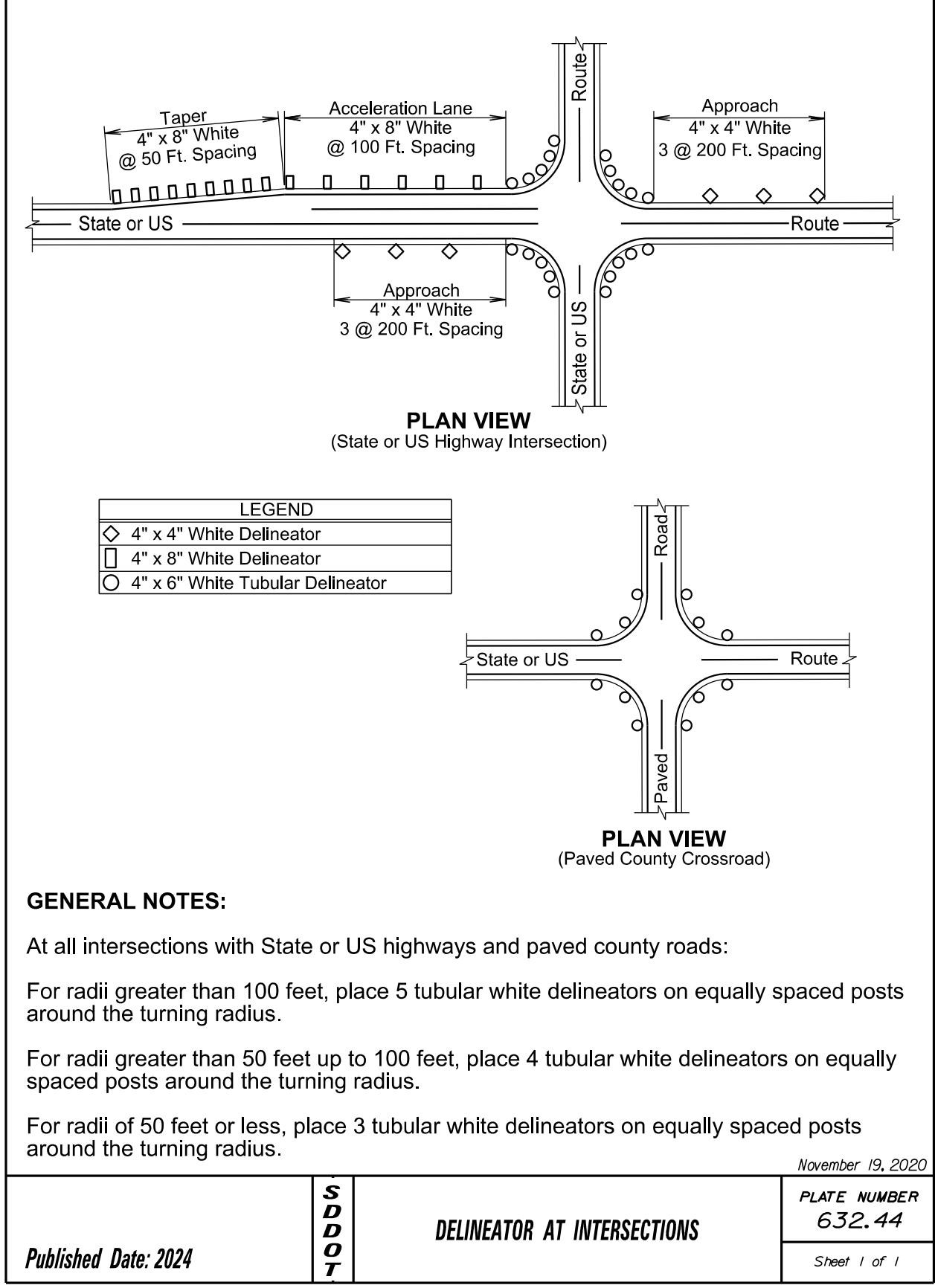
A type 2 object marker will be placed adjacent to the 3 cable guardrail (low tension) anchor, high tension cable guardrail anchor, and trailing end terminal at the location noted on sheet 1 of this standard plate. The type 2 object marker (6" x 12") will have fluorescent yellow type XI sheeting in conformance with ASTM D4956. All costs for furnishing and installing the type 2 object marker including the steel post, 6" x 12" reflective panel, and hardware will be included in the contract unit price per each for "Type 2 Object Marker" for single-sided and "Type 2 Object Marker Back to Back" for back to back type 2 object markers.

December 23, 2019

S D D O T	DELINEATION OF GUARDRAIL	PLATE NUMBER 632.40
		Sheet 4 of 4
		Published Date: 2024



Published Date: 2024	S D D O T	DELINEATOR INSTALLATION DETAIL	PLATE NUMBER 632.42
			Sheet 1 of 1



Published Date: 2024	S D D O T	DELINEATOR AT INTERSECTIONS	PLATE NUMBER 632.44
			Sheet 1 of 1