

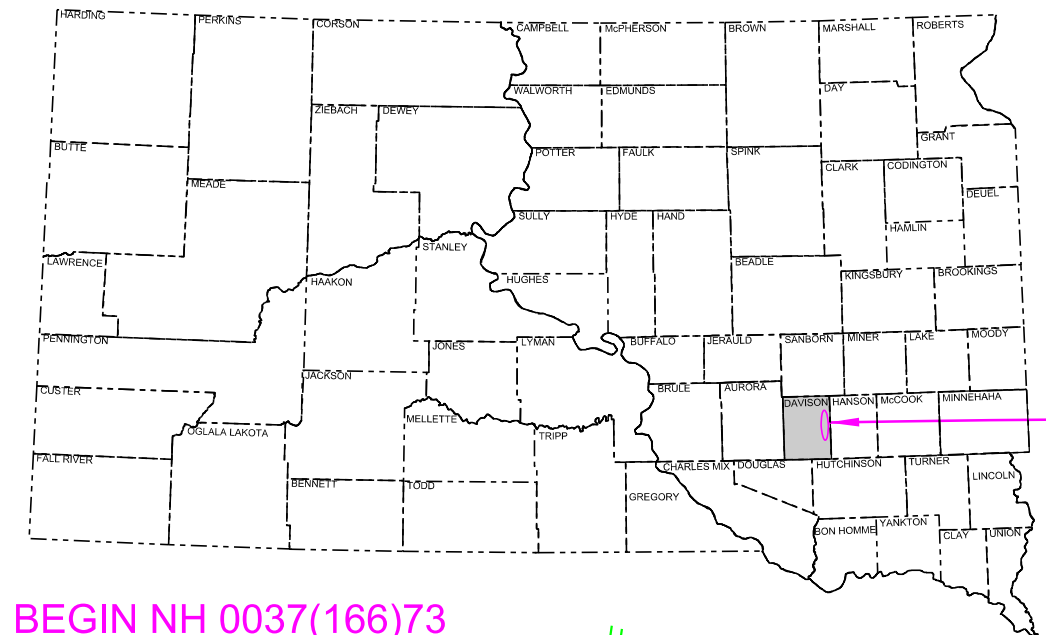
PLANS FOR PROPOSED
PROJECT NH 0037(166)73 & CR 0907(91)330
SD HIGHWAY 37 & INTERSTATE 90
DAVISON COUNTY

ADA CURB RAMP UPGRADES, SIDEWALK,
TRAFFIC SIGNAL, AND FULL INTERCHANGE LIGHTING

PCN 06WT & 09HU

INDEX OF SECTIONS

- Section A: Estimate of Quantities
- Section B: Grading
- Section C: Traffic Control
- Section D: Erosion Control
- Section L: Lighting & Signals
- Section X: Cross Sections



BEGIN NH 0037(166)73

PCN 06WT
Station 36+77.59 NH 0037(166)73 =
Station 36+77.59 NH 0037(17)73
Approximately 27.84' West and 2623.38' South
of the Northwest Section corner of Section
28 - T103N - R60W of the 5th P.M.
MRM: 73.25+0.004

EQUATION

Station 62+99.13 Bk = R 60 W
Station A 53+00.30 Ah

BEGIN EXCEPTION

Station A 54+10.00

EQUATION

Station A 89+98.91 Bk =
Station B 89+95.14 Ah

END EXCEPTION

Station B 108+82.86

END NH 0037(166)73

PCN 06WT
Station B 163+15.42 NH 0037(166)73 =
Station 163+15.42 NP 0037(63)74
Approximately 938.71' South and 839.46' East
of the North Quarter corner of Section
16 - T103N - R60W of the 5th P.M.
MRM: 75.76+0.070

DESIGN DESIGNATION

AADT (2024)	9111
AADT (2044)	12892
DHV	1733
D	50.0%
DHV T%	1.9%
AADT T%	4.2%
V	50 mph

STORM WATER PERMIT

Major Receiving
Body of Water: Lake Mitchell, Firesteel Creek
Area Disturbed: 3.5 acres
Total Project Area: 11.35 acres
Approx. Begin Lat,Long: 43.6947, -98.0468

R 60 W

Gross Length 13,640.43 Feet 2.583 Miles

Length of Exceptions 5,476.63 Feet 1.037 Miles

Net Length 8,163.8 Feet 1.546 Miles



3

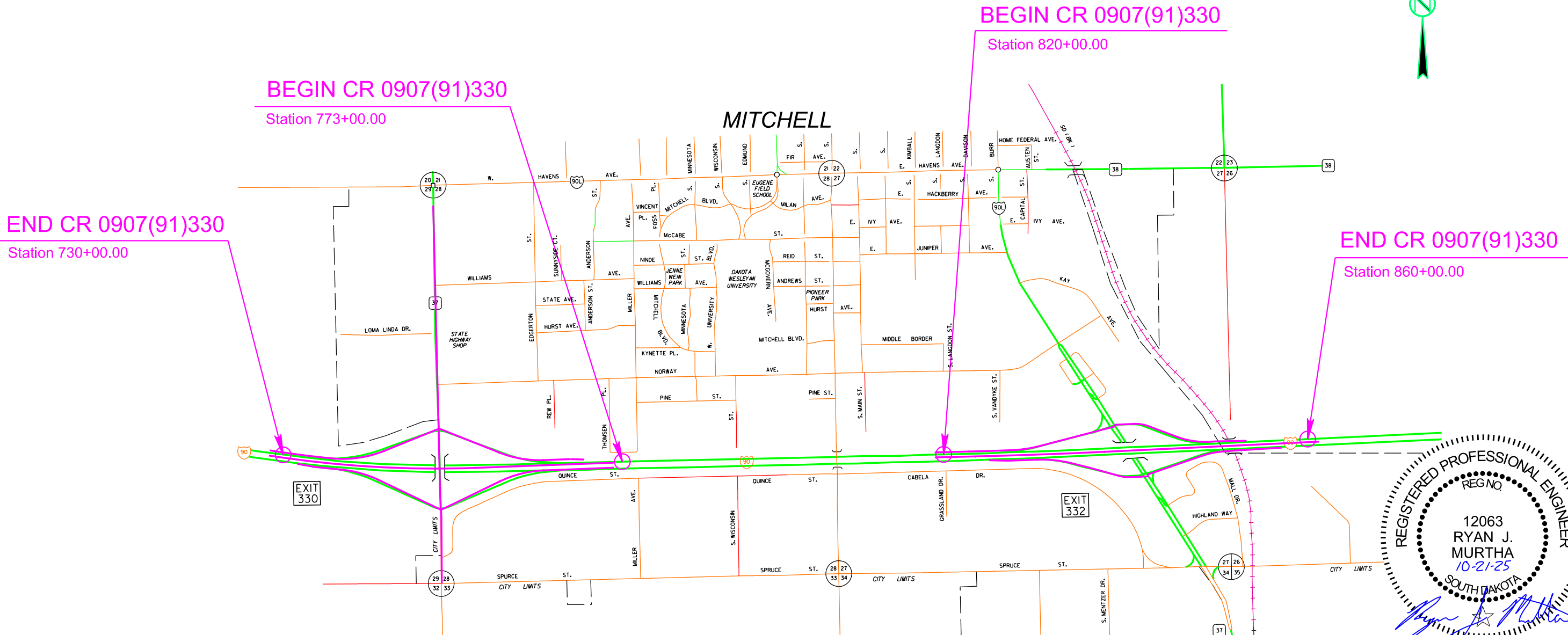
March 4, 2026

PROJECT CR 0907(91)330
INTERSTATE 90
DAVISON COUNTY
FULL INTERCHANGE LIGHTING
PCN 09HU

FOR BIDDING PURPOSES ONLY

STATE OF SOUTH DAKOTA	PROJECT	SHEET	TOTAL SHEETS
	NH 0037(166)73 CR 0907(91)330	2	229

Plotting Date: 7/1/2025



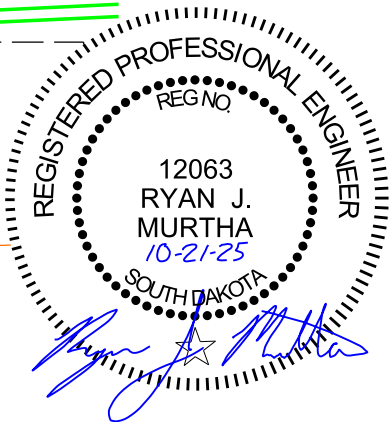
I90 DESIGN DESIGNATION

AADT (2024)	6420
AADT (2044)	9716
DHV	1413
D	50.0%
DHV T%	10.0%
AADT T%	22.0%
V	80 mph

STORM WATER PERMIT

Major Receiving
Body of Water: Enemy Creek
Area Disturbed: 0.1 acres
Total Project Area: 16.8 acres
Approx. Begin Lat,Long: 43.6919, -98.0541

Gross Length	18,009.00 Feet	3.411 Miles
Length of Exceptions	8,887.10 Feet	1.683 Miles
Net Length	9,121.90 Feet	1.728 Miles



ESTIMATE OF QUANTITIES AND ENVIRONMENTAL COMMITMENTS

FOR BIDDING PURPOSES ONLY

STATE OF SOUTH DAKOTA	PROJECT	SHEET	TOTAL SHEETS
	NH 0037(166)73 CR 0907 (91)330	A1	A5

Plotting Date: 10/21/2025 Rev 12/10/2025 RJM

Grading – Section B
PCN 06WT

BID ITEM NUMBER	ITEM	QUANTITY	UNIT
009E0010	Mobilization	Lump Sum	LS
009E3220	Reestablish Right-of-Way and Property Corner	17	Each
009E3225	Reestablish Public Land Survey System Corner	2	Each
009E3250	Miscellaneous Staking	1.470	Mile
009E3301	Engineer Directed Surveying/Staking	40.0	Hour
009E4200	Construction Schedule, Category II	Lump Sum	LS
110E0300	Remove Concrete Curb and/or Gutter	247	Ft
110E0400	Remove Drop Inlet	1	Each
110E1010	Remove Asphalt Concrete Pavement	60.6	SqYd
110E1100	Remove Concrete Pavement	408.0	SqYd
110E1130	Remove Concrete Driveway Pavement	182.2	SqYd
110E1140	Remove Concrete Sidewalk	3,726.6	SqYd
110E7150	Remove Sign for Reset	5	Each
120E0010	Unclassified Excavation	3,728	CuYd
120E0600	Contractor Furnished Borrow Excavation	2,234	CuYd
120E0900	Contaminated Material Excavation	100	CuYd
120E1000	Muck Excavation	219	CuYd
120E2000	Undercutting	2,020	CuYd
250E0020	Incidental Work, Grading	Lump Sum	LS
260E2010	Gravel Cushion	949.3	Ton
260E6010	Granular Material	50.0	Ton
320E1200	Asphalt Concrete Composite	11.6	Ton
380E3020	6" PCC Driveway Pavement	18.4	SqYd
380E3520	6" PCC Approach Pavement	191.3	SqYd
380E4060	8.5" PCC Fillet Section	236.4	SqYd
380E6110	Insert Steel Bar in PCC Pavement	186	Each
421E0100	Pipe Culvert Undercut	27	CuYd
450E0122	18" RCP Class 2, Furnish	6	Ft
450E0130	18" RCP, Install	6	Ft
450E3002	18" RCP Arch Class 2, Furnish	48	Ft
450E3010	18" RCP Arch, Install	48	Ft
450E3022	30" RCP Arch Class 2, Furnish	28	Ft
450E3030	30" RCP Arch, Install	28	Ft
450E4508	30" RCP Arch Flared End, Furnish	4	Each
450E4509	30" RCP Arch Flared End, Install	4	Each
450E4650	18" RCP Arch Safety End, Furnish	6	Each
450E4653	18" RCP Arch Safety End, Install	6	Each
462E0100	Class M6 Concrete	1.0	CuYd
464E0100	Controlled Density Fill	1.1	CuYd
480E0100	Reinforcing Steel	169	Lb
632E3500	Reset Sign	5	Each
650E0085	Type B68.5 Concrete Curb and Gutter	248	Ft
651E0040	4" Concrete Sidewalk	20,428	SqFt

Grading – Section B
PCN 06WT

BID ITEM NUMBER	ITEM	QUANTITY	UNIT
651E0060	6" Concrete Sidewalk	55,938	SqFt
651E7000	Type 1 Detectable Warnings	350	SqFt
670E2200	Type C Frame and Grate	1	Each
670E5400	Precast Drop Inlet Collar	1	Each
900E1320	Construction Entrance	1	Each

Traffic Control – Section C
PCN 06WT

BID ITEM NUMBER	ITEM	QUANTITY	UNIT
634E0010	Flagging	40.0	Hour
634E0110	Traffic Control Signs	546.5	SqFt
634E0120	Traffic Control, Miscellaneous	Lump Sum	LS
634E0275	Type 3 Barricade	3	Each
634E0420	Type C Advance Warning Arrow Board	3	Each
634E0915	Short Term Temporary Traffic Control Signal	1	Site
634E2000	Longitudinal Pedestrian Barricade	115	Ft
634E2015	Temporary Pedestrian Access Route	Lump Sum	LS
634E2020	Temporary Curb Ramp	10	Each
634E2025	Longitudinal Pedestrian Barrier	100	Ft
635E7600	Maintenance of Traffic Signal(s)	40	Hour

PCN 09HU

BID ITEM NUMBER	ITEM	QUANTITY	UNIT
634E0110	Traffic Control Signs	493.6	SqFt
634E0120	Traffic Control, Miscellaneous	Lump Sum	LS
634E0275	Type 3 Barricade	4	Each

Erosion and Sediment Control – Section D
PCN 06WT

BID ITEM NUMBER	ITEM	QUANTITY	UNIT
110E1690	Remove Sediment	2.7	CuYd
110E1693	Remove Erosion Control Wattle	244	Ft
110E1695	Remove Sediment Filter Bag	80	Ft
110E1700	Remove Silt Fence	620	Ft
120E6300	Water for Vegetation	111.7	MGal
230E0010	Placing Topsoil	1,432	CuYd
730E0206	Type D Permanent Seed Mixture	391	Lb
731E0200	Fertilizing	1.00	Ton
732E0200	Fiber Mulching	1.9	Ton
734E0102	Type 2 Erosion Control Blanket	300	SqYd
734E0154	12" Diameter Erosion Control Wattle	975	Ft
734E0165	Remove and Reset Erosion Control Wattle	244	Ft
734E0180	Sediment Filter Bag	80	Ft
734E0602	Low Flow Silt Fence	2,050	Ft
734E0604	High Flow Silt Fence	428	Ft
734E0610	Mucking Silt Fence	172	CuYd
734E0620	Repair Silt Fence	620	Ft
734E0845	Sediment Control at Inlet with Frame and Grate	29	Each
734E0847	Sediment Control at Type S Reinforced Concrete Drop Inlet	13	Ft
734E5010	Sweeping	10	Hour

INDEX OF SHEETS

A1 and A2 Estimate of Quantities for Sections B,C,D,and L,
A3 to A5 Environmental Commitments



ESTIMATE OF QUANTITIES AND ENVIRONMENTAL COMMITMENTS

FOR BIDDING PURPOSES ONLY

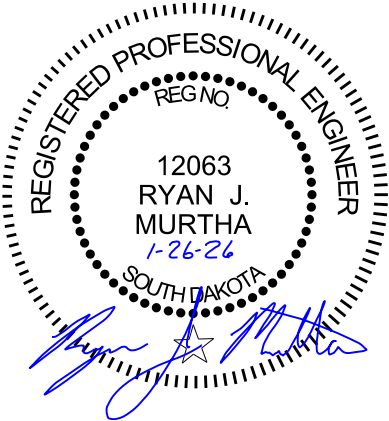
STATE OF SOUTH DAKOTA	PROJECT	SHEET	TOTAL SHEETS
	NH 0037(166)73 CR 0907 (91)330	A2	A5
Plotting Date: 10/21/2025 Rev 1/26/2026 RJM			

Signal and Lighting – Section L
PCN 06WT

BID ITEM NUMBER	ITEM	QUANTITY	UNIT
110E1530	Remove Signal Pole Footing	5	Each
110E5110	Salvage Signal Equipment	Lump Sum	LS
635E2065	Signal Pole with 65' Mast Arm	1	Each
635E2150	Signal Pole with 50' Mast Arm and Luminaire Arm	2	Each
635E2155	Signal Pole with 55' Mast Arm and Luminaire Arm	1	Each
635E3700	Roadway Luminaire, LED with Photoelectric Cell	80	Each
635E4030	3 Section Vehicle Signal Head	12	Each
635E4090	4 Section Directional Vehicle Signal Head	8	Each
635E5030	3' Diameter Footing	49.0	Ft
635E5302	Type 2 Electrical Junction Box	4	Each
635E5304	Type 4 Electrical Junction Box	1	Each
635E5400	Electrical Service Cabinet	1	Each
635E5430	Traffic Signal Controller	1	Each
635E5515	Battery Backup System for Traffic Signal	1	Each
635E5520	Video Detection System	1	Each
635E5560	Emergency Vehicle Preemption Unit	1	Each
635E5570	Optical Detector	4	Each
635E5880	Accessible Pedestrian Signal	8	Each
635E5910	Pedestrian Push Button Pole	8	Each
635E5922	Pedestrian Signal Head with Countdown Timer	8	Each
635E6200	Miscellaneous, Electrical	Lump Sum	LS
635E8110	1" Rigid Conduit, Schedule 40	155	Ft
635E8120	2" Rigid Conduit, Schedule 40	85	Ft
635E8130	3" Rigid Conduit, Schedule 40	85	Ft
635E8140	4" Rigid Conduit, Schedule 40	40	Ft
635E8230	3" Rigid Conduit, Schedule 80	470	Ft
635E9016	1/C #6 AWG Copper Wire	255	Ft
635E9018	1/C #8 AWG Copper Wire	1,905	Ft
635E9502	2/C #14 AWG Copper Tray Cable, K2	1,635	Ft
635E9503	3/C #14 AWG Copper Tray Cable, K2	120	Ft
635E9504	4/C #14 AWG Copper Tray Cable, K2	540	Ft
635E9505	5/C #14 AWG Copper Tray Cable, K2	380	Ft
635E9512	12/C #14 AWG Copper Tray Cable, K2	780	Ft
635E9525	25/C #14 AWG Copper Tray Cable, K2	780	Ft
635E9710	2/C #10 AWG Copper Pole and Bracket Cable	195	Ft

PCN 09HU

BID ITEM NUMBER	ITEM	QUANTITY	UNIT
009E0010	Mobilization	Lump Sum	LS
009E3260	Miscellaneous Staking	Lump Sum	LS
009E4200	Construction Schedule, Category II	Lump Sum	LS
110E0100	Remove Concrete Footing(s)	Lump Sum	LS
110E1550	Remove Light Tower	7	Each
635E0050	Breakaway Base Luminaire Pole with Arm, 50' Mounting Height	73	Each
635E0150	Breakaway Base Luminaire Pole with Twin Arms, 50' Mounting Height	6	Each
635E3700	Roadway Luminaire, LED with Photoelectric Cell	100	Each
635E5020	2' Diameter Footing	638.0	Ft
635E5301	Type 1 Electrical Junction Box	11	Each
635E5400	Electrical Service Cabinet	4	Each
635E8120	2" Rigid Conduit, Schedule 40	16,160	Ft
635E8220	2" Rigid Conduit, Schedule 80	330	Ft
635E9016	1/C #6 AWG Copper Wire	25,315	Ft
635E9018	1/C #8 AWG Copper Wire	26,445	Ft
635E9710	2/C #10 AWG Copper Pole and Bracket Cable	5,135	Ft



ENVIRONMENTAL COMMITMENTS

The SDDOT is committed to protecting the environment and uses Environmental Commitments as a communication tool for the Engineer and Contractor to ensure that attention is given to avoid, minimize, and/or mitigate an environmental impact. Environmental commitments to various agencies and the public have been made to secure approval of this project. An agency with permitting authority can delay a project if identified environmental impacts have not been adequately addressed. Unless otherwise designated, the Contractor’s primary contact regarding matters associated with these commitments will be the Project Engineer. During construction, the Project Engineer will verify that the Contractor has met Environmental Commitment requirements. These environmental commitments are not subject to change without prior written approval from the SDDOT Environmental Office.

Additional guidance on SDDOT’s Environmental Commitments can be accessed through the Environmental Procedures Manual found at: <<https://dot.sd.gov/media/documents/EnvironmentalProceduresManual.pdf> >

For questions regarding change orders in the field that may have an effect on an Environmental Commitment, the Project Engineer will contact the Environmental Engineer at 605-773-3180 or 605-773-4336 to determine whether an environmental analysis and/or resource agency coordination is necessary.

Once construction is complete, the Project Engineer will review all environmental commitments for the project and document their completion.

COMMITMENT A: AQUATIC RESOURCES

COMMITMENT A1: WETLANDS

All efforts to avoid and minimize wetland impacts from the project have resulted in approximately 0.07 acres of wetlands (includes temporary and permanent) becoming impacted. Refer to the plans for location and boundaries of the impacted wetlands.

Table of Impacted Wetlands

Wetland No.	Station	Perm. Impact Left (Acres)	Perm. Impact Right (Acres)	Temp. Impact Left (Acres)	Temp. Impact Right (Acres)	Total Impact (Acres)
04	49+75 - 59+25	0.00	0.00	0.06	0.00	0.06
07	B127+00 - B135+00	0.00	0.00	0.00	0.01	0.01
08	B139+75 - B143+00	0.00	0.00	0.00	0.00	0.00

Action Taken/Required:

Temporary impacts identified in the Table of Impacted Wetlands will not be mitigated as original contours and elevations will be re-established. Prior to initiating temporary work in wetlands, the Contractor will submit a plan to the Project Engineer in accordance with Section 7.21 D of the Specifications.

The Contractor will notify the Project Engineer if additional easement is needed to complete work adjacent to any wetland. The Project Engineer will obtain an appropriate course of action from the Environmental Office before proceeding with construction activities that affect any wetlands beyond the work limits and easements shown in the plans.

COMMITMENT C: WATER SOURCE

The Contractor will not withdraw water with equipment previously used outside the State of South Dakota or previously used in aquatic invasive species (AIS) positive waters within South Dakota without prior approval from the SDDOT Environmental Office. To prevent and control the introduction and spread of invasive species into the project vicinity, all equipment will be power washed with hot water (≥140 °F) and completely dried for a minimum of 7 days prior to subsequent use. South Dakota administrative rule 41:10:04:02 forbids the possession and transport of AIS; therefore, all attached dirt, mud, debris and vegetation must be removed and all compartments and tanks capable of holding standing water must be drained. This includes, but is not limited to, all equipment, pumps, lines, hoses and holding tanks.

The Contractor will not withdraw water directly from streams of the James, Big Sioux, and Vermillion watersheds without prior approval from the SDDOT Environmental Office.

Action Taken/Required:

The Contractor will obtain the necessary permits from the regulatory agencies such as the South Dakota Department of Agriculture and Natural Resources (DANR) and the United States Army Corps of Engineers (USACE) prior to water extraction activities.

Additional information and mapping of water sources impacted by Aquatic Invasive Species in South Dakota can be accessed at: < <https://sdleastwanted.sd.gov/maps/default.aspx> >

< [South Dakota Administrative Rule 41:10:04 Aquatic Invasive Species: https://sdlegislature.gov/rules/DisplayRule.aspx?Rule=41:10:04](https://sdlegislature.gov/rules/DisplayRule.aspx?Rule=41:10:04) >

COMMITMENT D: WATER QUALITY STANDARDS

COMMITMENT D1: SURFACE WATER QUALITY

This project may be in the vicinity of multiple streams and wetlands. These waters are considered waters of the state and are protected under Administrative Rules of South Dakota (ARSD) Chapter 74:51. Special construction measures may have to be taken to ensure that this water body is not impacted.

Action Taken/Required:

The Contractor is advised that the South Dakota Surface Water Quality Standards, administered by the South Dakota Department of Agriculture and Natural Resources (DANR), apply to this project. Special construction measures will be taken to ensure the above standard(s) of the surface waters are maintained and protected.

COMMITMENT D2: SURFACE WATER DISCHARGE

The DANR General Permit for Temporary Discharge is required for temporary dewatering and discharges to waters of the state. The effluent limit for total suspended solids will be 90 mg/L 30-day average. The effluent limit applies to discharges to all waters of the state except discharges to waters classified as cold water permanent fish life propagation waters according to the ARSD 74:51:01:45. For discharges to waters of the state classified as cold water permanent fish life propagation waters, the effluent limit for total suspended solids will be 53 mg/L daily maximum.

The permittee has the option of completing effluent testing or implementing a pollution prevention plan for compliance with this permit. If the permittee develops a pollution prevention plan instead of total suspended solids sampling, the plan must be developed and implemented prior to discontinuing total suspended solids sampling. Refer to Section 4.0 of the permit. If any pollutants are suspected of being discharged, a sample must be taken for those parameters listed in Section 3.4 of the permit.

Refer to Commitment D1: Surface Water Quality for stream classification.

Action Taken/Required:

If construction dewatering is required and this project is currently covered under a General Permit for Stormwater Discharges Associated with Construction Activities, the contractor will need to submit the dewatering information to the SDDANR using the following form:

<https://danr.sd.gov/OfficeOfWater/SurfaceWaterQuality/docs/DANR_AddTemplInfoFillable.pdf >

The Contractor will provide a copy of the approved permit or the submitted dewatering information to the Project Engineer prior to proceeding with any dewatering activities. The approved permit or submitted dewatering information must be kept on-site and as part of the project records.

Effluent monitoring, as a result of dewatering activities, will be summarized for each month and recorded on a separate Discharge Monitoring Report (DMR) and submitted to DANR monthly. Additional information can be found at:

<<https://danr.sd.gov/OfficeOfWater/SurfaceWaterQuality/swdpermitting/Ereporting.aspx> >

COMMITMENT E: STORM WATER

Construction activities constitute 1 acre or more of earth disturbance and/or work in a waterway.

Action Taken/Required:

The DANR General Permit for Stormwater Discharges Associated with Construction Activities is required for construction activity disturbing one or more acres of earth and work in a waterway. The SDDOT is the owner of this permit and will submit the NOI to DANR 15 days prior to project start in order to obtain coverage under the General Permit. Work can begin once the DANR letter of approval is received.

STATE OF SOUTH DAKOTA	PROJECT	SHEET	TOTAL SHEETS
	NH 0037(166)73 CR 0907(91)330	A4	A5

Plotting Date: 10/21/2025

The Contractor must adhere to the “Special Provision Regarding Storm Water Discharges to Waters of the State.”

The Contractor will complete the DANR Contractor Certification Form prior to the pre-construction meeting. The form certifies under penalty of law that the Contractor understands and will comply with the terms and conditions of the permit for this project. Work may not begin on this project until this form is signed and submitted to DANR.

The form can be found at:
<https://danr.sd.gov/OfficeOfWater/SurfaceWaterQuality/docs/DANR_CGPAappendixCCA2018Fillable.pdf>

The Contractor is advised that permit coverage may also be required for off-site activities, such as borrow and staging areas, which are the responsibility of the Contractor.

Storm Water Pollution Prevention Plan

The Storm Water Pollution Prevention Plan (SWPPP) will be developed prior to the submittal of the NOI and will be implemented for all construction activities for compliance with the permit. The SWPPP must be kept on-site and updated as site conditions change. Erosion control measures and best management practices will be implemented in accordance with the SWPPP.

The DOT 298 Form will be used for site inspections and to document changes to the SWPPP. A copy of the completed inspection form will be filed with the SWPPP documents and retained for a minimum of three years.

The inspection will include disturbed areas of the construction site that have not been finally stabilized, areas used for storage materials, structural control measures, and locations where vehicles enter or exit the site. These areas will be inspected for evidence of, or the potential for, pollutants entering the drainage system. Erosion and sediment control measures identified in the SWPPP will be observed to ensure that they are operating correctly, and sediment is not tracked off the site.

Information on storm water permits and SWPPPs are available on the following websites:

SDDOT: < <https://dot.sd.gov/doing-business/environmental/stormwater> >

DANR:<<https://danr.sd.gov/OfficeOfWater/SurfaceWaterQuality/stormwater/default.aspx>>

EPA: < <https://www.epa.gov/npdes> >

COMMITMENT G: DEWATERING AND SEDIMENT COLLECTION

The purpose of a dewatering and sediment collection system is to collect turbid stormwater on the project, treat it with flocculants as needed, and capture the sediment that falls out of suspension before the water is discharged into “Waters of the US” or “Waters of the State”. Refer to Commitment D1: Surface Water Quality for stream classification.

Action Taken/Required:

The Contractor will meet the terms of the Temporary Discharge Permit and the Storm Water Permit for Construction Activities.

The Contractor will create a Pollution Prevention Plan (PPP) for dewatering and sediment collection if the Contractor chooses to discharge the water into “Waters of the US” or “Waters of the State”. Refer to the detail sheet OPTIONS FOR DEWATERING AND SEDIMENT COLLECTION in the plans. The PPP must be kept on-site and updated as site conditions change.

COMMITMENT H: WASTE DISPOSAL SITE

The Contractor will furnish a site(s) for the disposal of construction and/or demolition debris generated by this project.

Action Taken/Required:

Construction and/or demolition debris may not be disposed of within the Public ROW.

The waste disposal site(s) will be managed and reclaimed in accordance with the following from the General Permit for Construction/Demolition Debris Disposal Under the South Dakota Waste Management Program issued by the Department of Agriculture and Natural Resources.

The waste disposal site(s) will not be located in a wetland, within 200 feet of surface water, or in an area that adversely affects wildlife, recreation, aesthetic value of an area, or any threatened or endangered species, as approved by the Environmental Office and the Project Engineer.

If the waste disposal site(s) is located such that it is within view of any ROW, the following additional requirements will apply:

1. Construction and/or demolition debris consisting of concrete, asphalt concrete, or other similar materials will be buried in a trench separate from wood debris. The final cover over the construction and/or demolition debris will consist of a minimum of 1 foot of soil capable of supporting vegetation. Waste disposal sites provided outside of the Public ROW will be seeded in accordance with Natural Resources Conservation Service recommendations. The seeding recommendations may be obtained through the appropriate County NRCS Office. The Contractor will control the access to waste disposal sites not within the Public ROW with fences, gates, and placement of a sign or signs at the entrance to the site stating, “No Dumping Allowed”.

2. Concrete and asphalt concrete debris may be stockpiled within view of the ROW for a period not to exceed the duration of the project. Prior to project completion, the waste will be removed from view of the ROW or buried, and the waste disposal site reclaimed as noted above.

The above requirements will not apply to waste disposal sites that are covered by an individual solid waste permit as specified in SDCL 34A-6-58, SDCL 34A-6-1.13, and ARSD 74:27:10:06. Failure to comply with the requirements stated above may result in civil penalties in accordance with South Dakota Solid Waste Law, SDCL 34A-6-1.31.

All costs associated with furnishing waste disposal site(s), disposing of waste, maintaining control of access (fence, gates, and signs), and reclamation of the waste disposal site(s) will be incidental to the various contract items.

COMMITMENT I: HISTORIC PRESERVATION OFFICE CLEARANCES

The SDDOT has obtained concurrence with the State Historic Preservation Office (SHPO) for all work included within the project limits and all department designated sources and designated option material sources, stockpile sites, storage areas, and waste sites provided within the plans.

Action Taken/Required:

All earth disturbing activities not designated within the plans require a cultural resource review prior to scheduling the pre-construction meeting. This work includes but is not limited to: Contractor furnished material sources, material processing sites, stockpile sites, storage areas, plant sites, and waste areas.

The Contractor will arrange and pay for a record search and when necessary, a cultural resource survey. The Contractor has the option to contact the state Archaeological Research Center (ARC) at 605-394-1936 or another qualified archaeologist, to obtain either a records search or a cultural resources survey. A record search might be sufficient for review if the site was previously surveyed; however, a cultural resources survey may need to be conducted by a qualified archaeologist.

The Contractor will provide ARC with the following: a topographical map or aerial view in which the site is clearly outlined, site dimensions, project number, and PCN. If applicable, provide evidence that the site has been previously disturbed by farming, mining, or construction activities with a landowner statement that artifacts have not been found on the site.

The Contractor will submit the cultural resources survey report to SDDOT Environmental Office, 700 East Broadway Avenue, Pierre, SD 57501-2586. SDDOT will submit the information to the appropriate SHPO/THPO. Allow **30 Days** from the date this information is submitted to the Environmental Engineer for SHPO/THPO review.

In the event of an inadvertent discovery of human remains, funerary objects, or if evidence of cultural resources is identified during project construction activities, then such activities within 150 feet of the inadvertent discovery will immediately cease and the Project Engineer will be immediately notified. The Project Engineer will contact the SDDOT Environmental Office, who will contact the appropriate SHPO/THPO within 48 hours of the discovery to determine an appropriate course of action.

SHPO review does not relieve the Contractor of the responsibility obtaining any additional permits and clearances for Contractor furnished material sources, material processing sites, stockpile sites, storage areas, plant sites, and waste areas that affect wetlands, threatened and endangered species, or waterways. The Contractor will not utilize a site known or suspected of having contaminated soil or water. The Contractor will provide the required permits and clearances to the Project Engineer at the preconstruction meeting.

COMMITMENT L: CONTAMINATED MATERIAL

Contaminated soil and/or known gas stations, undergrounds storage tanks, etc. are located within the project limits. Petroleum contaminated soil is or may be located at the following sites:

Description	Station	L / R
South Dakota DOT Fuel Station	43+00 – 45+00	R
Westside Sinclair Gas Station	61+00 – 62+50	R
Dakota Sunset Gas Station	A 53+50 – A 55+00	R
Cubby's Gas Station	A 53+50 – A 57+00	L

Action Taken/Required:

The Contractor will give notice to the Engineer when contaminated soil is encountered on the project. The Engineer will contact the Environmental Office so that contact with the DANR and consultant to inspect and monitor removal of any contaminated soil can be initiated.

The Contractor will be responsible for having the existing underground utilities located in the construction area. Underground utilities damaged by the Contractor due to negligence will be repaired at the Contractor's expense.

Petroleum contaminated soil may be disposed of at the City of Mitchell Regional Landfill (phone 605-995-8448). Measurement of "Contaminated Material Excavation" will be in accordance with Section 120.4 of the Specifications. All costs for excavating and transporting the contaminated materials to the disposal site and all fees charged per cubic yard by the disposal site will be incidental to the contract unit price per cubic yard for "Contaminated Material Excavation".

COMMITMENT M: SECTION 4(f)/6(f) RESOURCES

COMMITMENT M1: SECTION 4(f) PROPERTY

A Section 4(f) Evaluation concluded there are no feasible and prudent alternatives to avoiding Section 4(f) property located within the project.

Station	Section 4(f) Property
(Sidewalk) 0+75 – 1+15	Historic Railroad Grade (ESS1)
B110+00 – B142+00	Cadwell Sports Complex

Action Taken/Required:

The following measures are required to minimize harm to the Cadwell Sports Complex:

- The duration of occupancy is temporary and less than the time needed for construction of the project, and no permanent change in ownership of the land will occur;
- The scope of work is minor, in that both the nature and magnitude of the changes to the existing 4(f) property are minimal;

- There are no anticipated permanent adverse physical impacts, nor interference with the protected activities, features, or attributes of the property, on either a temporary or permanent basis;
- And any land to be disturbed will be fully restored and returned to a condition which is at least as good as that which existed prior to the project.

The Contractor is not permitted to stage equipment or materials within the Cadwell . The Contractor will notify the Project Engineer if additional easement is needed to complete the work adjacent to any Section 4(f) property. The Project Engineer will obtain an appropriate course of action from the Environmental Office before proceeding with construction activities that affect any Section 4(f) property.

COMMITMENT M2: SECTION 6(f) PROPERTY

National Park Service concurrence has been obtained for project impacts to the following resource(s) acquired and developed through a Land and Water Conservation Fund grant.

Station	Section 6(f) Property
B110+00 – B142+00	Cadwell Sports Complex

Action Taken/Required:

The Contractor is not permitted to stage equipment or materials within the Cadwell Sports Complex. The Contractor will notify the Project Engineer if additional easement is needed to complete the work adjacent to any Section 6(f) property. The Project Engineer will obtain an appropriate course of action from the Environmental Office before proceeding with construction activities that affect any Section 6(f) property.

COMMITMENT N: SECTION 404 PERMIT

The SDDOT has obtained a Section 404 Permit from the USACE for the permanent actions associated with this project.

Action Taken/Required:

The Contractor will comply with all requirements contained in the Section 404 Permit.

The Contractor will also be responsible for obtaining a Section 404 Permit for any dredge, excavation, or fill activities associated with material sources, storage areas, waste sites, and Contractor work sites outside the plan work limits that affect wetlands, floodplains, or waters of the United States.

COMMITMENT Q: ARCHAEOLOGICAL COORDINATION

As a result of a Cultural Resources Survey, a historic property have been identified within and/or adjacent to the project rights-of-way.

The following historic property has been identified that require avoidance of construction activities:

Table of Historic Properties

Station	Offset (Ft.)	L/R	Environmental Sensitive Site	Action
(Sidewalk) 0+75 – 1+15	30	R	ESS1	Do Not Disturb/Stay within the identified works areas

The locations and boundaries of the site(s) for avoidance are shown in Section B - Grading Plans.

Action Taken/Required:

If evidence for cultural resources is uncovered during project construction activities, then such activities within 150 feet of the inadvertent discovery will immediately cease and the Project Engineer will be immediately notified. The Project Engineer will contact the SDDOT Environmental Office, who will consult with the Archaeological Research Center (ARC), the SHPO, and FHWA, to determine the appropriate course of action.

All artifacts, features, or other items of interest uncovered by project construction activities will not be displaced unless the landowner and the SHPO consent to it.