

STATE OF SOUTH DAKOTA
DEPARTMENT OF TRANSPORTATION

STATE OF SOUTH DAKOTA	PROJECT	SHEET	TOTAL SHEETS
	P 0025(90)132	1	32

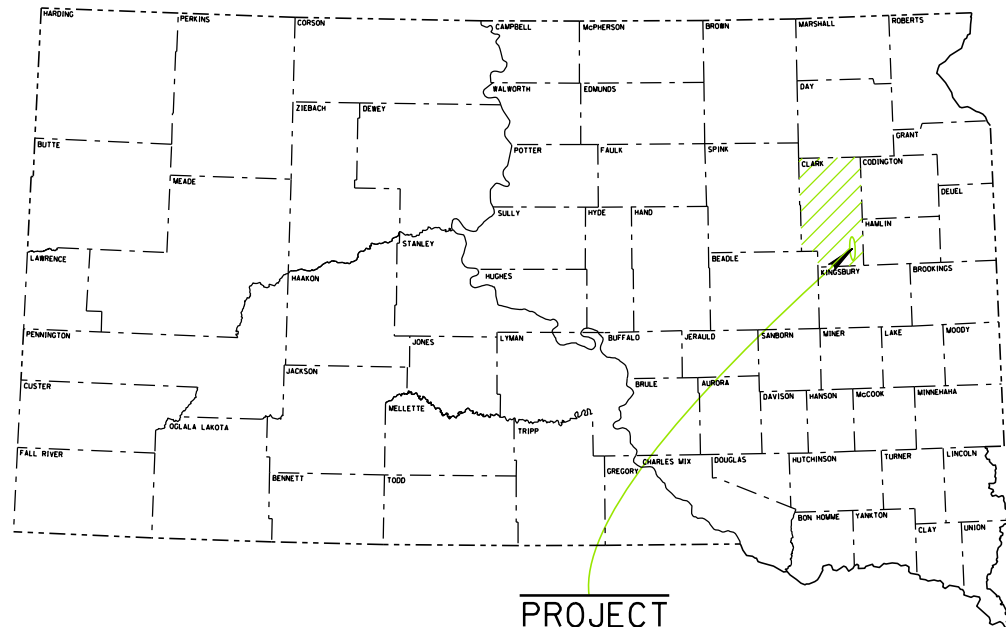
Plotting Date: 03/11/2024

PLANS FOR PROPOSED
**PROJECT
P 0025(90)132
SD HIGHWAY 25
CLARK COUNTY**

Asphalt Concrete Surfacing
and Permanent Pavement Marking

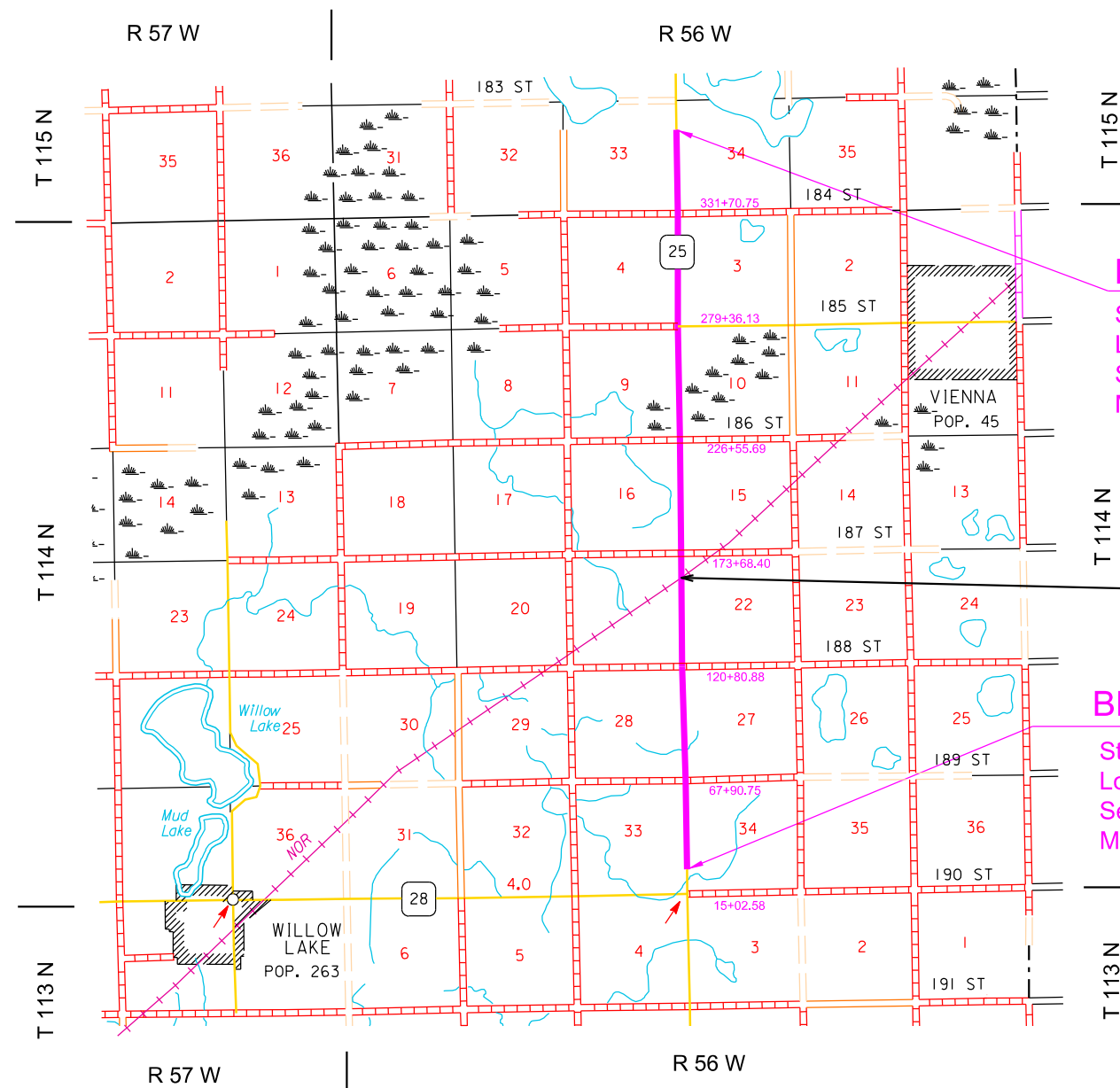
INDEX OF SECTIONS

- Section A Estimate of Quantities and Environmental Commitments
- Section C Traffic Controls Plans
- Section F Surfacing Plans
- Section M Pavement Marking Plans



PROJECT

PCN 06WY



END P 0025(90)132

Sta. 364+00.0 = Sta. 547+90.0 on F465(3).
Located 3229.0 feet North of the Northeast corner of
Section 4 - Township 114 North - Range 56 West.
MRM = 138.0 + 0.500

Exception
Sta. 162+61.3 to Sta. 162+73.2
Railroad Crossing

BEGIN P 0025(90)132

Sta. 30+26.0 = Sta. 881+74.3 on F465(3).
Located 1523.0 feet North of the Southeast corner of
Section 33 - Township 114 North - Range 56 West.
MRM = 132.0 + 0.146

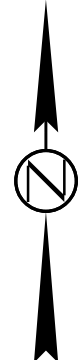
DESIGN DESIGNATION

ADT (2023)	897
ADT (2043)	1309
DHV	271
D	50%
T DHV	9.8%
T ADT	21.5%
V	70 MPH

STORM WATER PERMIT

MAJOR STREAM - Dry Lake
AREA DISTURBED - 1.5 Acres
PROJECT AREA - 34.5 Acres
LATITUDE = 44.6349 (Google Maps)
LONGITUDE = -97.5530 (Google Maps)

GROSS LENGTH	33,374.0 FEET	6.321 MILES
LENGTH OF EXCEPTIONS	11.9 FEET	0.002 MILES
NET LENGTH	33,362.1 FEET	6.319 MILES



8

November 6, 2024

FILE - ... \PROJECT\CLARK\TITLE A 06WY.DGN

ESTIMATE OF QUANTITIES AND ENVIRONMENTAL COMMITMENTS

STATE OF SOUTH DAKOTA	PROJECT P 0025(90)132	SHEET A1	TOTAL SHEETS A3
-----------------------------	--------------------------	-------------	-----------------------

Section C - Traffic Control

Section M - Pavement Marking

SPECIFICATIONS

Standard Specifications for Roads and Bridges, 2015 Edition and Required Provisions, Supplemental Specifications, and Special Provisions as included in the Proposal.

BID ITEM NUMBER	ITEM	QUANTITY	UNIT
634E0010	Flagging	240.0	Hour
634E0020	Pilot Car	100.0	Hour
634E0110	Traffic Control Signs	310.8	SqFt
634E0120	Traffic Control, Miscellaneous	Lump Sum	LS
634E0630	Temporary Pavement Marking	25.2	Mile

BID ITEM NUMBER	ITEM	QUANTITY	UNIT
633E0055	Cold Applied Plastic Pavement Marking, Railroad Crossing	2	Each
633E1200	High Build Waterborne Pavement Marking Paint, White	285	Gal
633E1206	High Build Waterborne Pavement Marking Paint with Reflective Elements, Yellow	105	Gal
633E5040	Grooving for Cold Applied Plastic Pavement Marking, Railroad Crossing	2	Each

Section F – Surfacing

BID ITEM NUMBER	ITEM	QUANTITY	UNIT
009E0010	Mobilization	Lump Sum	LS
009E1350	Restoration of Stockpile Site	Lump Sum	LS
009E3230	Grade Staking	2.000	Mile
009E3250	Miscellaneous Staking	6.319	Mile
009E3301	Engineer Directed Surveying/Staking	20.0	Hour
009E3320	Checker	Lump Sum	LS
120E0010	Unclassified Excavation	214	CuYd
120E0100	Unclassified Excavation, Digouts	316	CuYd
120E6200	Water for Granular Material	152.8	MGal
210E1005	Surface Preparation	2.000	Mile
260E1010	Base Course	1,157.4	Ton
260E1030	Base Course, Salvaged	404.2	Ton
270E0110	Salvage and Stockpile Granular Material	404.2	Ton
320E0005	PG 58-34 Asphalt Binder	1,962.5	Ton
320E1202	Class Q2R Hot Mixed Asphalt Concrete	42,206.4	Ton
320E4000	Hydrated Lime	421.9	Ton
320E7012	Grind 12" Rumble Strip or Stripe in Asphalt Concrete	12.6	Mile
320E7028	Grind Centerline Rumble Stripe in Asphalt Concrete	5.4	Mile
320E7030	Grind Sinusoidal Centerline Rumble Stripe in Asphalt Concrete	0.9	Mile
330E0010	MC-70 Asphalt for Prime	65.6	Ton
330E0100	SS-1h or CSS-1h Asphalt for Tack	84.3	Ton
330E0210	SS-1h or CSS-1h Asphalt for Flush Seal	36.0	Ton
330E1000	Blotting Sand for Prime	150.8	Ton
330E2000	Sand for Flush Seal	338.9	Ton
600E0300	Type III Field Laboratory	1	Each
900E0022	Remove and Reset Mailbox	4	Each
900E1980	Storage Unit	1	Each
998E0100	Railroad Protective Insurance	Lump Sum	LS

INDEX OF SHEETS

A1	Estimate of Quantities for Sections C, F, and M
A2 to A3	Environmental Commitments

ESTIMATE OF QUANTITIES AND ENVIRONMENTAL COMMITMENTS

STATE OF SOUTH DAKOTA	PROJECT	SHEET	TOTAL SHEETS
	P 0025(90)132	A2	A3

ENVIRONMENTAL COMMITMENTS

The SDDOT is committed to protecting the environment and uses Environmental Commitments as a communication tool for the Engineer and Contractor to ensure that attention is given to avoid, minimize, and/or mitigate an environmental impact. Environmental commitments to various agencies and the public have been made to secure approval of this project. An agency with permitting authority can delay a project if identified environmental impacts have not been adequately addressed. Unless otherwise designated, the Contractor's primary contact regarding matters associated with these commitments will be the Project Engineer. During construction, the Project Engineer will verify that the Contractor has met Environmental Commitment requirements. These environmental commitments are not subject to change without prior written approval from the SDDOT Environmental Office.

Additional guidance on SDDOT's Environmental Commitments can be accessed through the Environmental Procedures Manual found at: <https://dot.sd.gov/media/documents/EnvironmentalProceduresManual.pdf> >

For questions regarding change orders in the field that may have an effect on an Environmental Commitment, the Project Engineer will contact the Environmental Engineer at 605-773-3180 or 605-773-4336 to determine whether an environmental analysis and/or resource agency coordination is necessary.

Once construction is complete, the Project Engineer will review all environmental commitments for the project and document their completion.

COMMITMENT B: FEDERALLY THREATENED, ENDANGERED, AND PROTECTED SPECIES

COMMITMENT B2: WHOOPING CRANE

The Whooping Crane is a spring and fall migratory bird in South Dakota that is about 5 feet tall and typically stops on wetlands, rivers, and agricultural lands along their migration route. An adult Whooping Crane is white with a red crown and a long, dark, pointed bill. Immature Whooping Cranes are cinnamon brown. While in flight, their long necks are kept straight and their long dark legs trail behind. Adult Whooping Cranes' black wing tips are visible during flight.

Action Taken/Required:

Harassment or other measures to cause the Whooping Crane to leave the site is a violation of the Endangered Species Act. If a Whooping Crane is sighted roosting in the vicinity of the project, borrow pits, or staging areas associated with the project, cease construction activities in the affected area until the Whooping Crane departs and immediately contact the Project Engineer. The Project Engineer will contact the Environmental Office so that the sighting can be reported to USFWS.

COMMITMENT B6: MIGRATORY BIRDS WORK RESTRICTION

Migratory birds are known to use the project area for nesting, which primarily occurs from April 1st to July 15th.

Action Taken/Required:

The Contractor is responsible for contracting the services of a qualified biologist for conducting preconstruction migratory bird surveys in suitable areas that have not been mowed or cleared prior to April 1st to determine if there are current nests and to determine offsetting measures to compensate for impacts to migratory birds. A survey will be conducted annually for each year of construction. Contractor will coordinate the survey findings with the Project Engineer. If any nests are found, appropriate minimization measures will need to be developed in cooperation with the Environmental Office.

Construction activities should not occur in the locations listed in the table below during the migratory bird work restriction without prior approval from the SDDOT Environmental Office to avoid conflicts with nesting migratory birds.

Station	Migratory Bird Restriction
30+26 to 364+00 (L/R)	April 1 to July 15
30+26 to 364+00 (L/R)	Mow/Clear prior to April 1, 2025

COMMITMENT C: WATER SOURCE

The Contractor will not withdraw water with equipment previously used outside the State of South Dakota or previously used in aquatic invasive species (AIS) positive waters within South Dakota without prior approval from the SDDOT Environmental Office. To prevent and control the introduction and spread of invasive species into the project vicinity, all equipment will be power washed with hot water (≥ 140 °F) and completely dried for a minimum of 7 days prior to subsequent use. South Dakota administrative rule 41:10:04:02 forbids the possession and transport of AIS; therefore, all attached dirt, mud, debris and vegetation must be removed and all compartments and tanks capable of holding standing water must be drained. This includes, but is not limited to, all equipment, pumps, lines, hoses and holding tanks.

Action Taken/Required:

The Contractor will obtain the necessary permits from the regulatory agencies such as the South Dakota Department of Agriculture and Natural Resources (DANR) and the United States Army Corps of Engineers (USACE) prior to water extraction activities.

Additional information and mapping of water sources impacted by Aquatic Invasive Species in South Dakota can be accessed at:

< <https://sdleastwanted.sd.gov/maps/default.aspx> >

< [South Dakota Administrative Rule 41:10:04 Aquatic Invasive Species: https://sdlegislature.gov/rules/DisplayRule.aspx?Rule=41:10:04](https://sdlegislature.gov/rules/DisplayRule.aspx?Rule=41:10:04) >

COMMITMENT E: STORM WATER

Construction activities constitute less than 1 acre of disturbance.

Action Taken/Required:

At a minimum and regardless of project size, appropriate erosion and sediment control measures must be installed to control the discharge of pollutants from the construction site.

COMMITMENT H: WASTE DISPOSAL SITE

The Contractor will furnish a site(s) for the disposal of construction and/or demolition debris generated by this project.

Action Taken/Required:

Construction and/or demolition debris may not be disposed of within the Public ROW.

The waste disposal site(s) will be managed and reclaimed in accordance with the following from the General Permit for Construction/Demolition Debris Disposal Under the South Dakota Waste Management Program issued by the Department of Agriculture and Natural Resources.

The waste disposal site(s) will not be located in a wetland, within 200 feet of surface water, or in an area that adversely affects wildlife, recreation, aesthetic value of an area, or any threatened or endangered species, as approved by the Environmental Office and the Project Engineer.

If the waste disposal site(s) is located such that it is within view of any ROW, the following additional requirements will apply:

1. Construction and/or demolition debris consisting of concrete, asphalt concrete, or other similar materials will be buried in a trench separate from wood debris. The final cover over the construction and/or demolition debris will consist of a minimum of 1 foot of soil capable of supporting vegetation. Waste disposal sites provided outside of the Public ROW will be seeded in accordance with Natural Resources Conservation Service recommendations. The seeding recommendations may be obtained through the appropriate County NRCS Office. The Contractor will control the access to waste disposal sites not within the Public ROW with fences, gates, and placement of a sign or signs at the entrance to the site stating, "No Dumping Allowed".

2. Concrete and asphalt concrete debris may be stockpiled within view of the ROW for a period not to exceed the duration of the project. Prior to project completion, the waste will be removed from view of the ROW or buried, and the waste disposal site reclaimed as noted above.

The above requirements will not apply to waste disposal sites that are covered by an individual solid waste permit as specified in SDCL 34A-6-58, SDCL 34A-6-1.13, and ARSD 74:27:10:06. Failure to comply with the requirements stated above may result in civil penalties in accordance with South Dakota Solid Waste Law, SDCL 34A-6-1.31.

All costs associated with furnishing waste disposal site(s), disposing of waste, maintaining control of access (fence, gates, and signs), and reclamation of the waste disposal site(s) will be incidental to the various contract items.

ESTIMATE OF QUANTITIES AND ENVIRONMENTAL COMMITMENTS

STATE OF SOUTH DAKOTA	PROJECT	SHEET	TOTAL SHEETS
	P 0025(90)132	A3	A3

COMMITMENT I: HISTORIC PRESERVATION OFFICE CLEARANCES

The SDDOT has obtained concurrence with the State Historic Preservation Office (SHPO or THPO) for all work included within the project limits and all department designated sources and designated option material sources, stockpile sites, storage areas, and waste sites provided within the plans.

Action Taken/Required:

All earth disturbing activities not designated within the plans require a cultural resource review prior to scheduling the pre-construction meeting. This work includes but is not limited to: Contractor furnished material sources, material processing sites, stockpile sites, storage areas, plant sites, and waste areas.

The Contractor will arrange and pay for a record search and when necessary, a cultural resource survey. The Contractor has the option to contact the state Archaeological Research Center (ARC) at 605-394-1936 or another qualified archaeologist, to obtain either a records search or a cultural resources survey. A record search might be sufficient for review if the site was previously surveyed; however, a cultural resources survey may need to be conducted by a qualified archaeologist.

The Contractor will provide ARC with the following: a topographical map or aerial view in which the site is clearly outlined, site dimensions, project number, and PCN. If applicable, provide evidence that the site has been previously disturbed by farming, mining, or construction activities with a landowner statement that artifacts have not been found on the site.

The Contractor will submit the cultural resources survey report to SDDOT Environmental Office, 700 East Broadway Avenue, Pierre, SD 57501-2586. SDDOT will submit the information to the appropriate SHPO/THPO. Allow **30 Days** from the date this information is submitted to the Environmental Engineer for SHPO/THPO review.

In the event of an inadvertent discovery of human remains, funerary objects, or if evidence of cultural resources is identified during project construction activities, then such activities within 100 feet of the inadvertent discovery will immediately cease and the Project Engineer will be immediately notified. The Project Engineer will contact the SDDOT Environmental Office, who will contact the appropriate SHPO/THPO within 48 hours of the discovery to determine an appropriate course of action.

SHPO/THPO review does not relieve the Contractor of the responsibility for obtaining any additional permits and clearances for Contractor furnished material sources, material processing sites, stockpile sites, storage areas, plant sites, and waste areas that affect wetlands, threatened and endangered species, or waterways. The Contractor will not utilize a site known or suspected of having contaminated soil or water. The Contractor will provide the required permits and clearances to the Project Engineer at the preconstruction meeting.