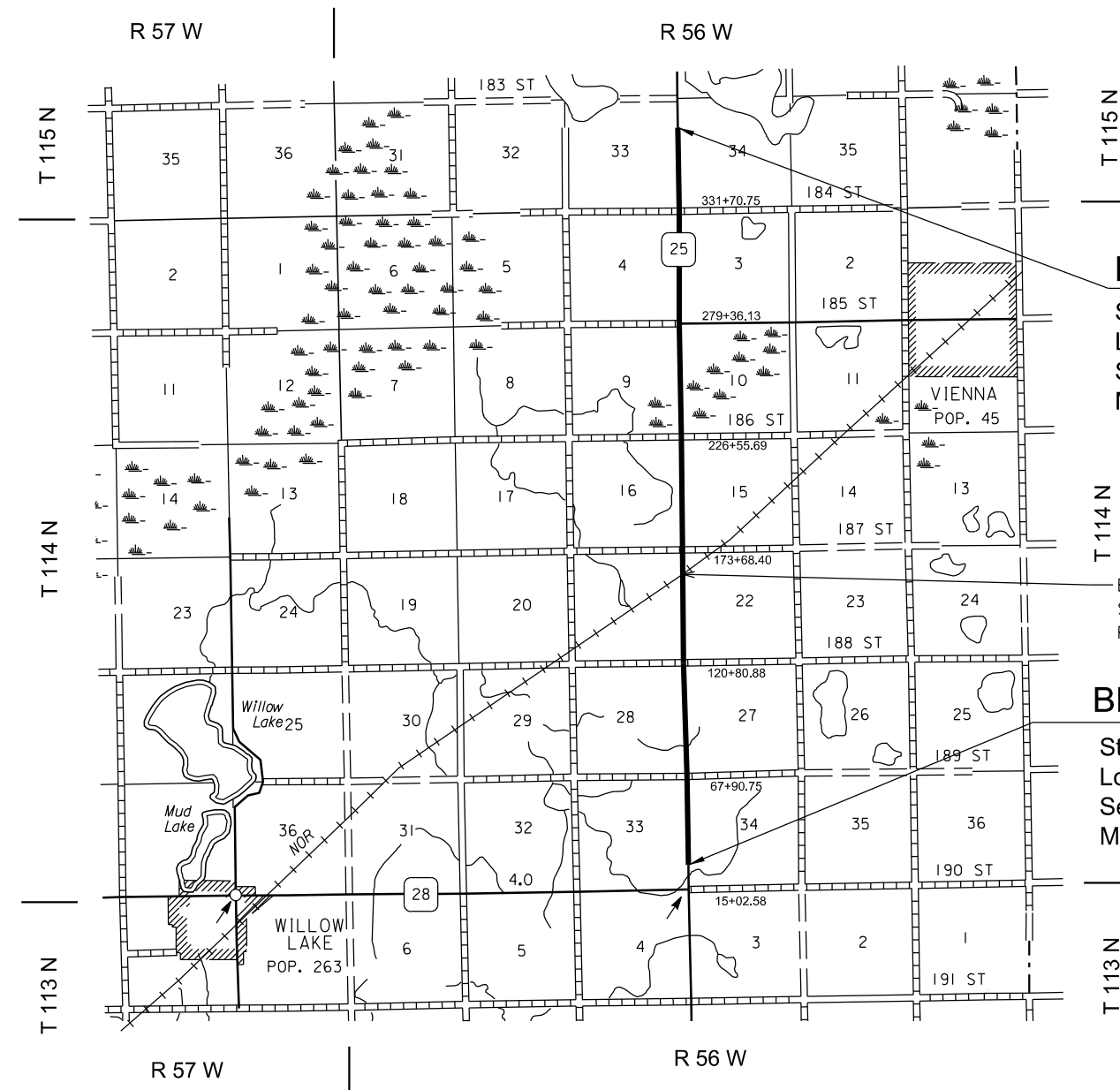


Plotting Date: 01/10/2024

# Section C: TRAFFIC CONTROL PLANS

## INDEX OF SECTIONS

C1	Title Sheet
C2-C3	Estimate & Plan Notes
C4	Sign Layout
C5-C8	Standard Plates
C9	Itemized List of Traffic Control



### END P 0025(90)132

Sta. 364+00.0 = Sta. 547+90.0 on F465(3).  
 Located 3229.0 feet North of the Northeast corner of  
 Section 4 - Township 114 North - Range 56 West.  
 MRM = 138.0 + 0.500

Exception  
 Sta. 162+62.3 to Sta. 162+73.2  
 Railroad Crossing

### BEGIN P 0025(90)132

Sta. 30+26.0 = Sta. 881+74.3 on F465(3).  
 Located 1523.0 feet North of the Southeast corner of  
 Section 33 - Township 114 North - Range 56 West.  
 MRM = 132.0 + 0.146

### SECTION C ESTIMATE OF QUANTITIES

P 0025(90)132

BID ITEM NUMBER	ITEM	QUANTITY	UNIT
634E0010	Flagging	240.0	Hour
634E0020	Pilot Car	100.0	Hour
634E0110	Traffic Control Signs	310.8	SqFt
634E0120	Traffic Control, Miscellaneous	Lump Sum	LS
634E0630	Temporary Pavement Marking	25.2	Mile

### SEQUENCE OF OPERATIONS

1. Install fixed location signing prior to start of work.
2. Complete surface preparations.
3. Complete prime operations.
4. Complete asphalt paving operations.
5. Complete flush seal.
6. Complete rumble stripe installation
7. Complete pavement marking installation.
8. Complete all remaining project items.

Contractor requests to deviate from the sequence of operations will be submitted in writing to the Engineer for review. Approval of an alternate sequence of operations will only be allowed when the proposed changes meet with the Department's intent for traffic control and sequencing of the work. An alternate sequence will be submitted for review a minimum of one week prior to potential implementation.

### GENERAL TRAFFIC CONTROL

Existing guide, route, informational logo, regulatory, and warning signs will be temporarily reset and maintained during construction. Removing, relocating, covering, salvaging, and resetting of existing traffic control devices, including delineation, will be the responsibility of the Contractor. Cost for this work will be incidental to the contract unit prices for the various items unless otherwise specified in the plans. Any delineators and signs damaged or lost will be replaced by the Contractor at no cost to the State.

All temporary traffic control sign locations will be set in the field by the Contractor and verified by the Engineer prior to installation.

All construction operations will be conducted in the general direction of traffic movement.

If there is a discrepancy between the traffic control plans, standard plates, and the MUTCD, whichever is more stringent will be used, as determined by the Engineer.

Unless otherwise stated in these plans, work will not be allowed during hours of darkness.

Fixed location signing placed more than 4 calendar days prior to the start of construction will be covered or laid down until the time of construction. The

covers must be approved by the Engineer prior to installation. The cost of materials, labor, and equipment necessary to complete this work will be incidental to other contract items. No separate payment will be made.

All fixed location signs, sign posts, and breakaway bases will be removed within 7 calendar days following pavement marking.

All haul trucks will be equipped with an additional flashing amber light that is visible from the backside of the haul truck. The costs for the flashing amber lights will be incidental to the various related contract items.

Traffic will be maintained on the driving lanes. Use of the shoulder as a driving lane will not be permitted. Any damage to the shoulder due to rerouted traffic or Contractor's equipment will be repaired at no expense to the Department.

The Contractor will furnish, install, maintain, and remove TRUCK CROSSING (W8-6) signs daily. The TRUCK CROSSING signs will be displayed always when haul vehicles are hauling material. When hauling conditions no longer exist, the signs will be covered or removed from view. The exact number and location will be determined during construction. Payment for additional signs will be based on the contract unit price per square foot for "Traffic Control Signs".

A mobile work operation will be allowed provided the rumble strip or rumble stripe grooving, flush sealing, and pavement marking can be completed satisfactorily by a continuously moving work operation. A mobile work operation will require approval by the Engineer.

### FLAGGING

Operations will be conducted so that the traveling public will not have to wait longer than 15 minutes at the flagger station.

Additional flagger warning signs and 40 flagger hours have been included in the Estimate of Quantities for use on intersecting roads. These flaggers will be used as directed by the Engineer and will be used primarily during daytime hours. Also included in the Estimate of Quantities are WAIT FOLLOW PILOT CAR signs for use on low volume intersecting roads as determined by the Engineer. WAIT FOLLOW PILOT CAR signs will not block the view of the stop sign.



It is required that the flaggers and pilot car operators be able to communicate with one another. If an emergency vehicle needs to pass through the project, the Contractor will be required to expedite traffic movement. All costs associated with this will be incidental to the contract unit price per hour for "Flagging".

### TEMPORARY PAVEMENT MARKING

Temporary flexible vertical markers (tabs) will be installed on one side of the centerline rumble for the temporary pavement marking. No passing zones will be marked in accordance with Specifications. DO NOT PASS (R4-1) and PASS WITH CARE (R4-2) signs will also be used in addition to the temporary flexible vertical markers (tabs) placed per Specifications to mark no passing zones.

The total length of no passing zone on this project is estimated to be 2.73 miles.

It is estimated that 8 DO NOT PASS and 8 PASS WITH CARE signs will be required.

Temporary flexible vertical markers (tabs) will be used to mark dashed centerline, No Passing Zones, and applicable lane lines. Paint will not be allowed for temporary pavement marking on the asphalt concrete wear course or after application of the flush seal.

Temporary pavement marking paint will not be allowed on the final lift of asphalt surfacing. Temporary pavement marking paint will not be allowed on the chip seal, fog seal, or flush seal. Temporary flexible vertical markers (tabs) must be used on the final lift of asphalt surfacing. The Contractor may use tabs with covers, uncovering them for the chip seal, fog seal, or flush seal. As an alternative, the Contractor may install new tabs for the fog seal or flush seal.

Covers on the tabs will be sufficiently secured to prevent traffic from dislodging the cover and when removed, the covers will be properly disposed of. The Contractor will remove and properly dispose of the tabs after permanent pavement marking is applied. Method of removal will be nondestructive to the road surface and will be accomplished within one week of completion of the permanent pavement marking.

Full reflectivity of all temporary flexible vertical markers (tabs) is required at all times. The Contractor will be required to replace any missing or non-reflective tabs after each installation as detailed below at no additional cost to the State.

Quantities of Temporary Pavement Markings consist of:

- One pass on the first lift of asphalt concrete
- One pass on top of the final lift of asphalt concrete
- One pass prior to the flush seal, length as determined by the Engineer
- One pass after the flush seal

If the Engineer determines that an additional pass prior to the flush seal is not required, this application of the temporary pavement marking will be eliminated. If the flush seal is eliminated for the project, the application of the temporary pavement marking on top of the flush seal as well as the additional pass prior to the flush seal will be eliminated.

No adjustment in the contract unit price for "Temporary Pavement Marking" will be made because of a variation in quantities.

STATE OF SOUTH DAKOTA	PROJECT	SHEET NO.	TOTAL SHEETS
	P 0025(90)132	C3	C9
Plotting Date: 01/10/2024			

**TEMPORARY PAVEMENT MARKING CONT.**

In the absence of a signed lane closure or pilot car operation, FLAGGER (W20-7) symbol signs and flaggers, or a shadow vehicle with rotating yellow lights or strobe lights will be positioned on the shoulder in advance of workers for both directions of traffic during the installation and removal of the temporary flexible vertical markers (tabs). The traffic control device used will be moved intermittently to provide proper warning of the work operation. A ROAD WORK AHEAD (W20-1) sign, a WORKER (W21-1) symbol sign or a BE PREPARED TO STOP (W3-4) sign will be mounted on the rear of the shadow vehicle. The method of traffic control used by the Contractor for this work must be approved by the Engineer.

Prior to nightfall, tabs will be required to mark centerline on segments of roadway where existing centerline markings have been removed and new markings have not been installed.

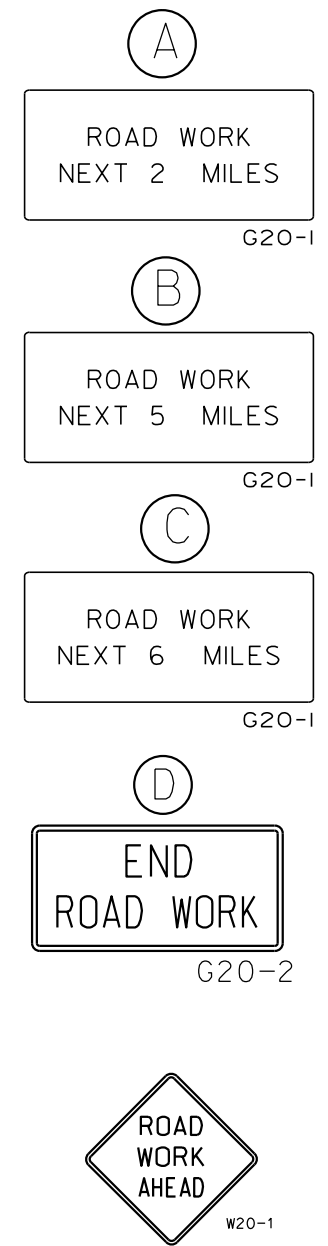
PLOT SCALE - 1:1000

PLOT NAME - 1

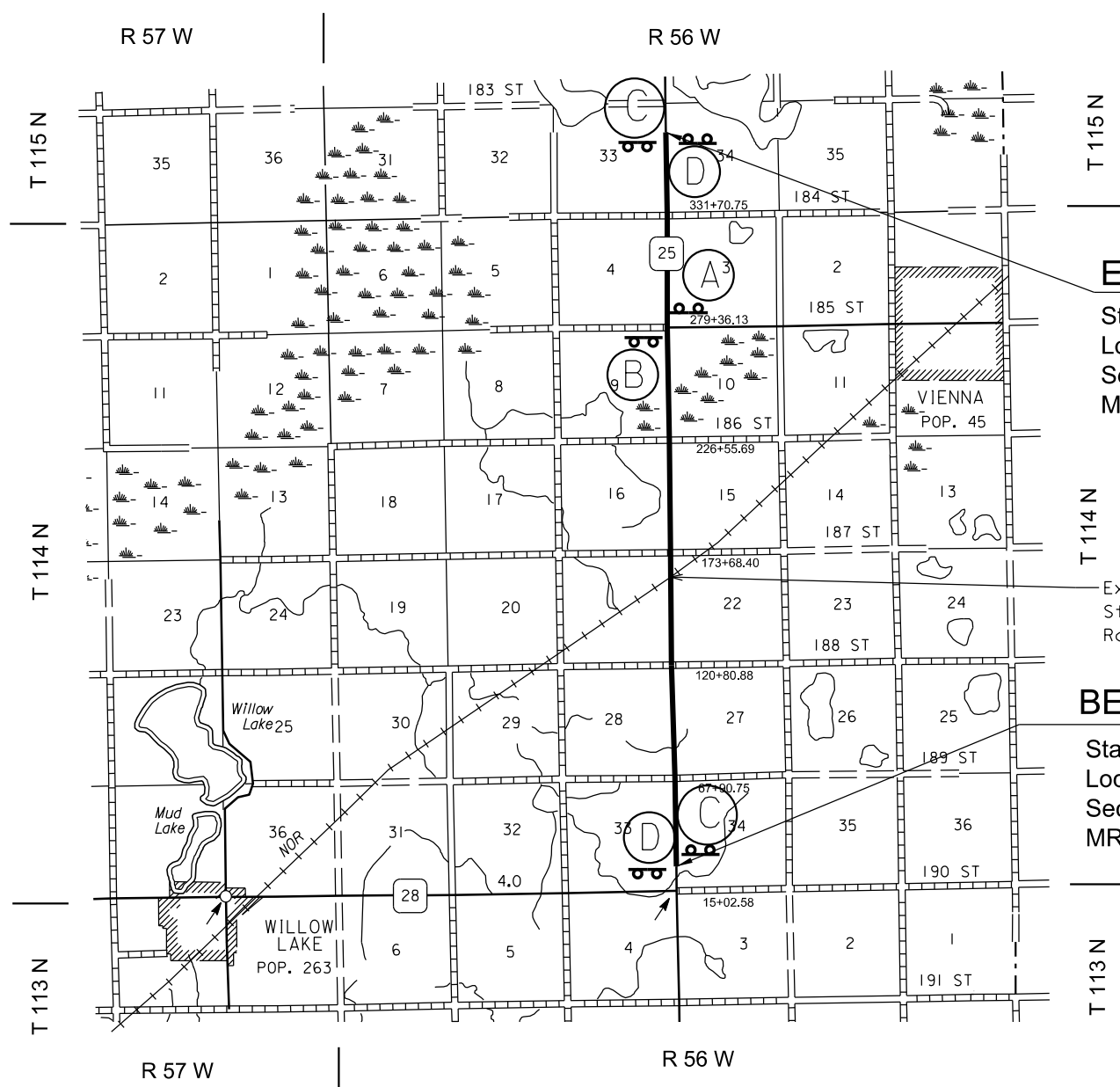
FILE - ... \PRJ\CLRK06WY\BORDER C.DGN

PLOTTED FROM - TRHJINT04

# FIXED LOCATION GROUND MOUNTED BREAKAWAY SUPPORT SIGNS



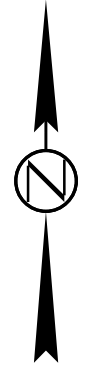
W20-1 ROAD WORK AHEAD signs will be mounted on portable supports and will be placed on intersecting roadways as directed by the Engineer. ROAD WORK AHEAD will be moved as necessary to keep current with work activities.



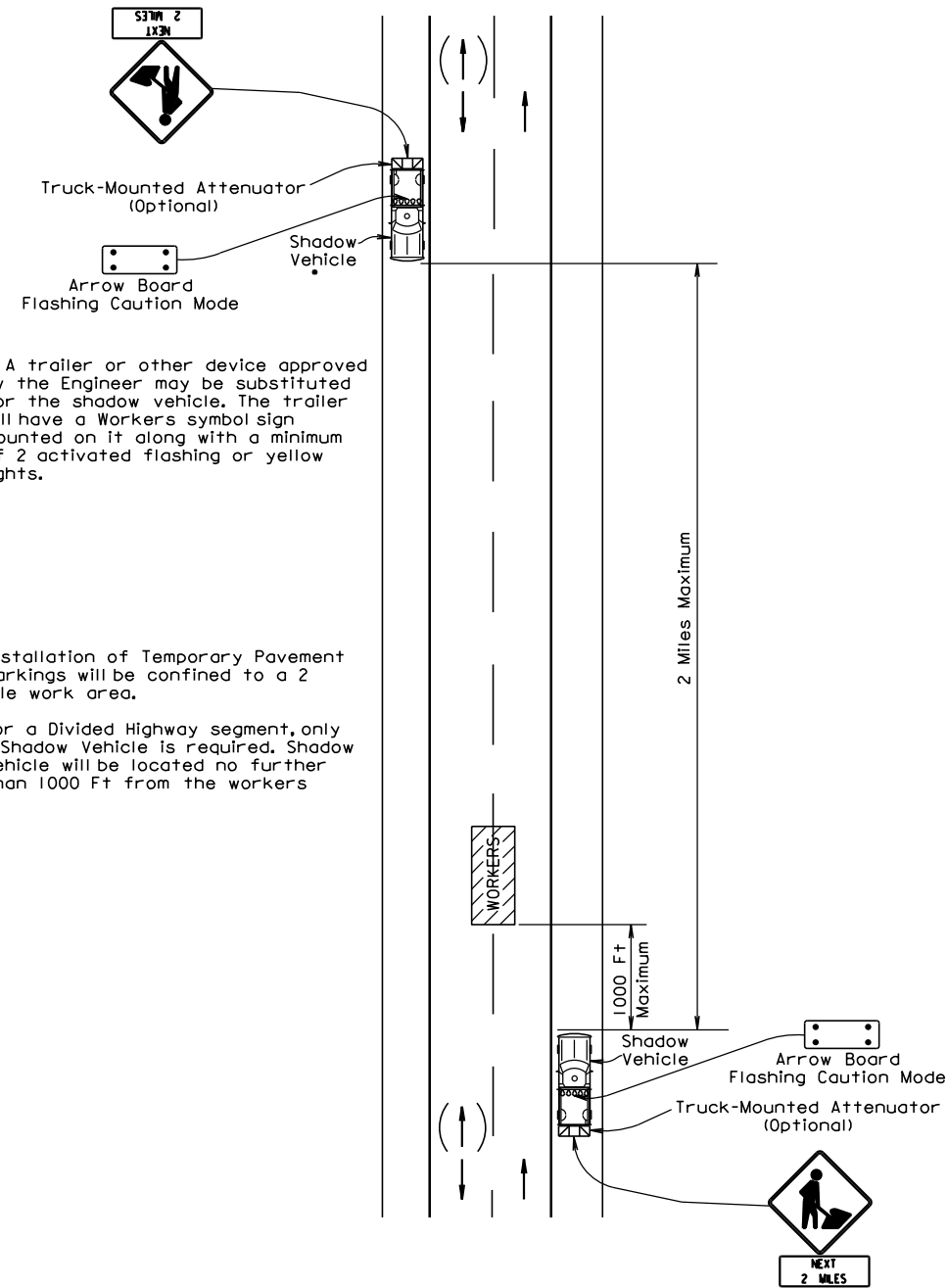
**END P 0025(90)132**  
 Sta. 364+00.0 = Sta. 547+90.0 on F465(3).  
 Located 3229.0 feet North of the Northeast corner of  
 Section 4 - Township 114 North - Range 56 West.  
 MRM = 138.0 + 0.500

Exception  
 Sta. 162+62.3 to Sta. 162+73.2  
 Railroad Crossing

**BEGIN P 0025(90)132**  
 Sta. 30+26.0 = Sta. 881+74.3 on F465(3).  
 Located 1523.0 feet North of the Southeast corner of  
 Section 33 - Township 114 North - Range 56 West.  
 MRM = 132.0 + 0.146



**GUIDES FOR TRAFFIC CONTROL DEVICES  
APPLICATION OF TEMPORARY FLEXIBLE VERTICAL MARKERS**

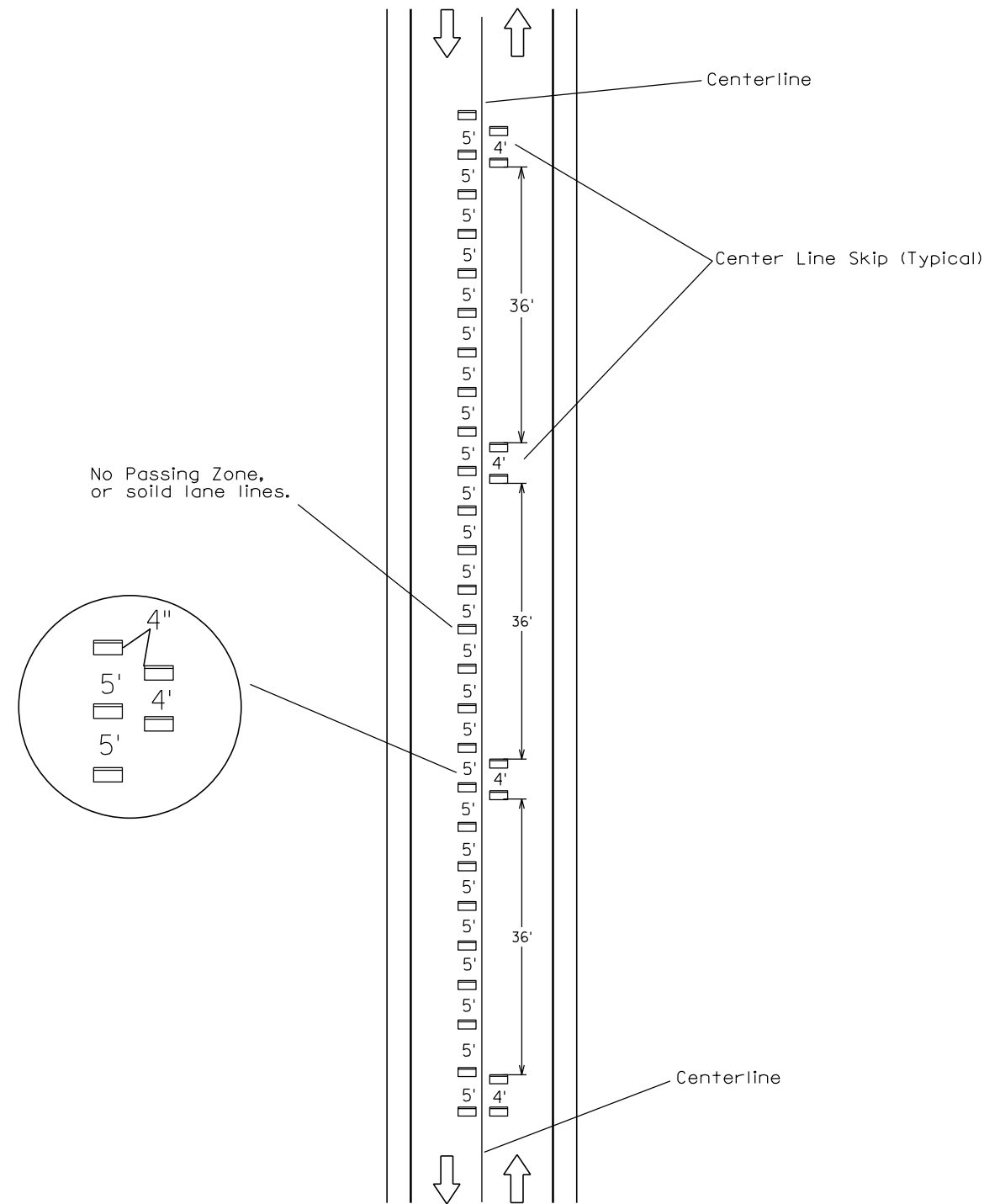


\* A trailer or other device approved by the Engineer may be substituted for the shadow vehicle. The trailer will have a Workers symbol sign mounted on it along with a minimum of 2 activated flashing or yellow lights.

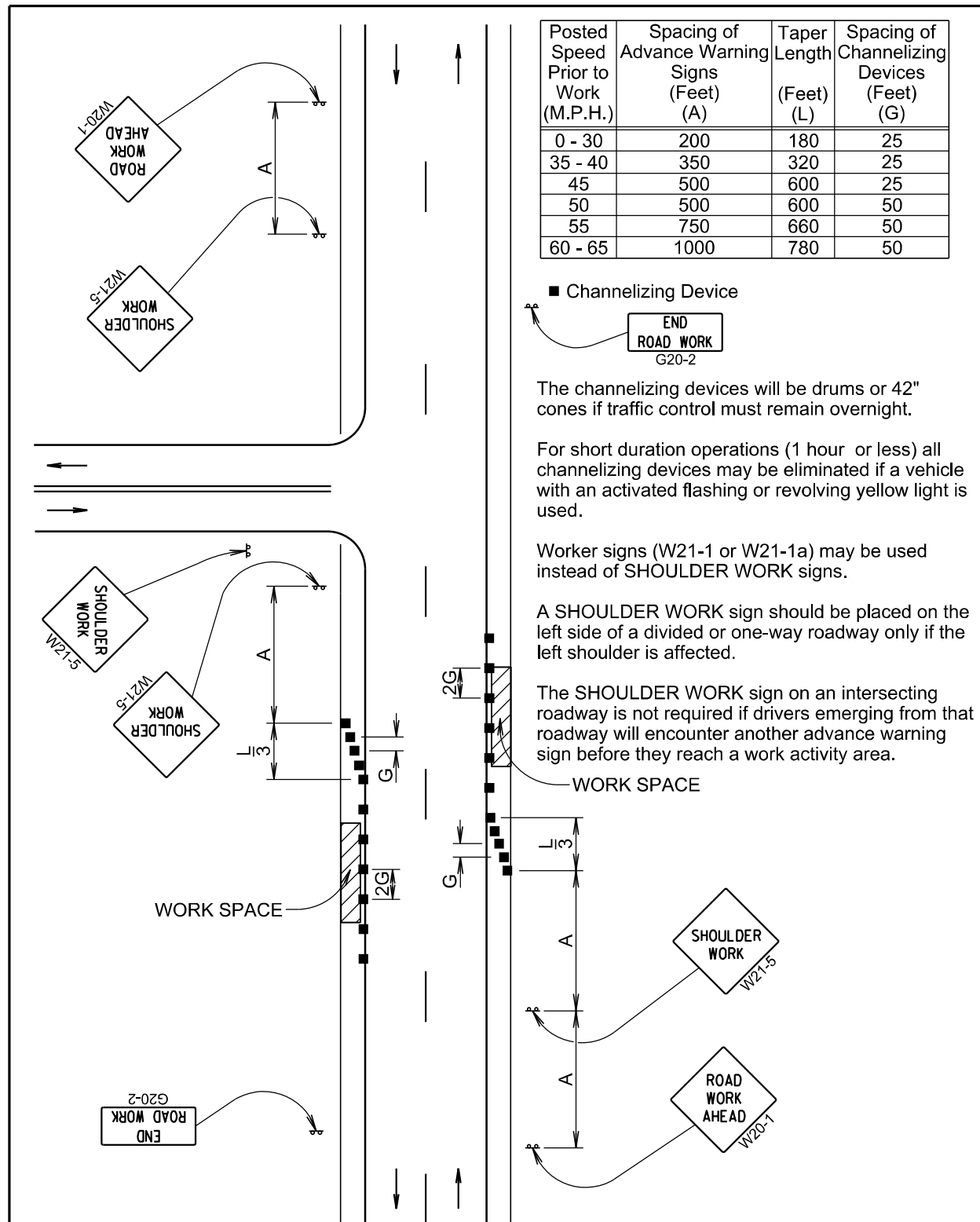
Installation of Temporary Pavement Markings will be confined to a 2 Mile work area.

For a Divided Highway segment, only 1 Shadow Vehicle is required. Shadow Vehicle will be located no further than 1000 Ft from the workers

**DETAILS FOR TRAFFIC CONTROL DEVICES  
TEMPORARY ROAD MARKER INSTALLATION**



PLOT SCALE - 1:1000



January 22, 2021

Published Date: 2024

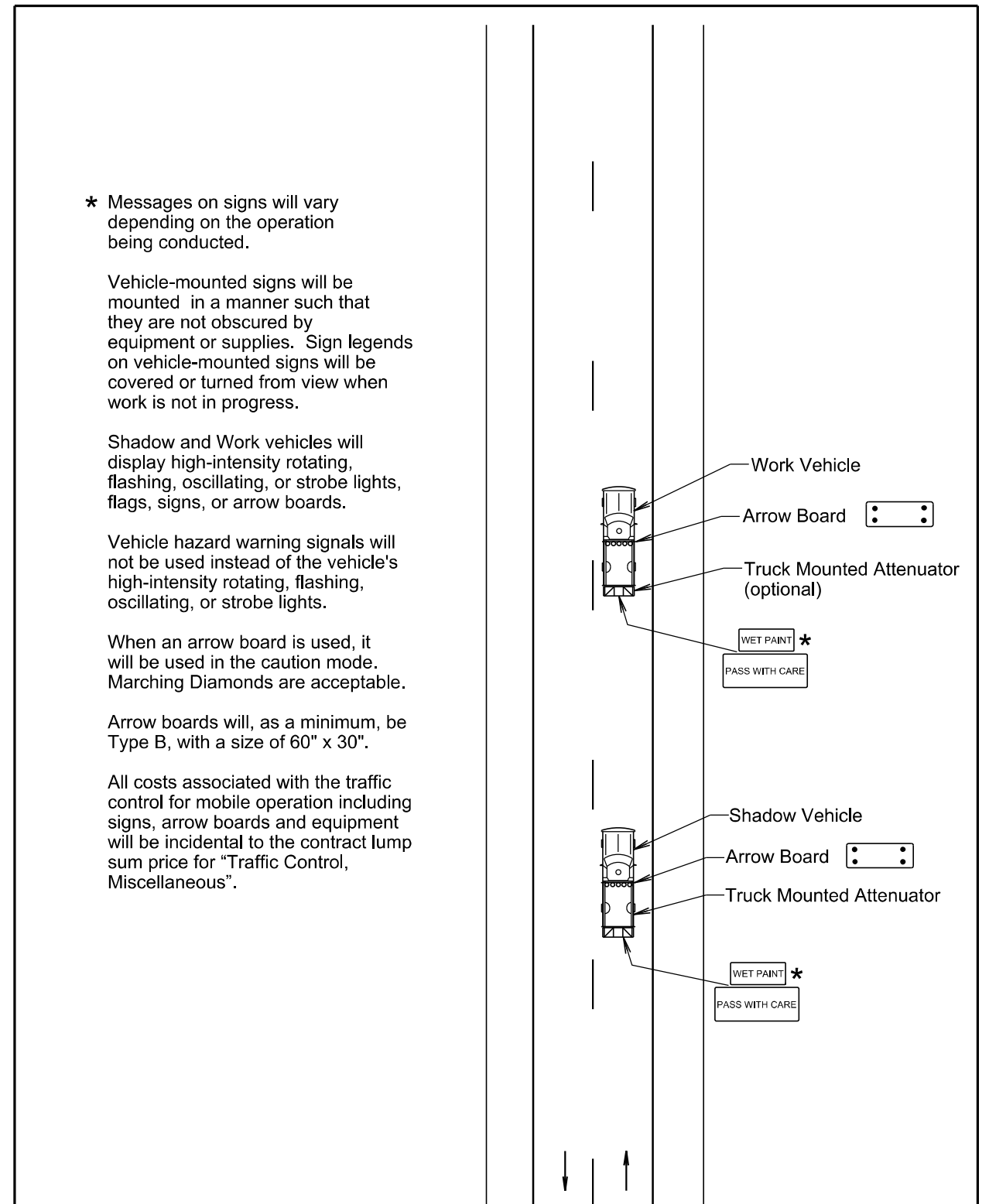
S  
D  
D  
O  
T

**WORK ON SHOULDERS**

PLATE NUMBER  
634.03

Sheet 1 of 1

PLOT NAME - 1



January 22, 2021

Published Date: 2024

S  
D  
D  
O  
T

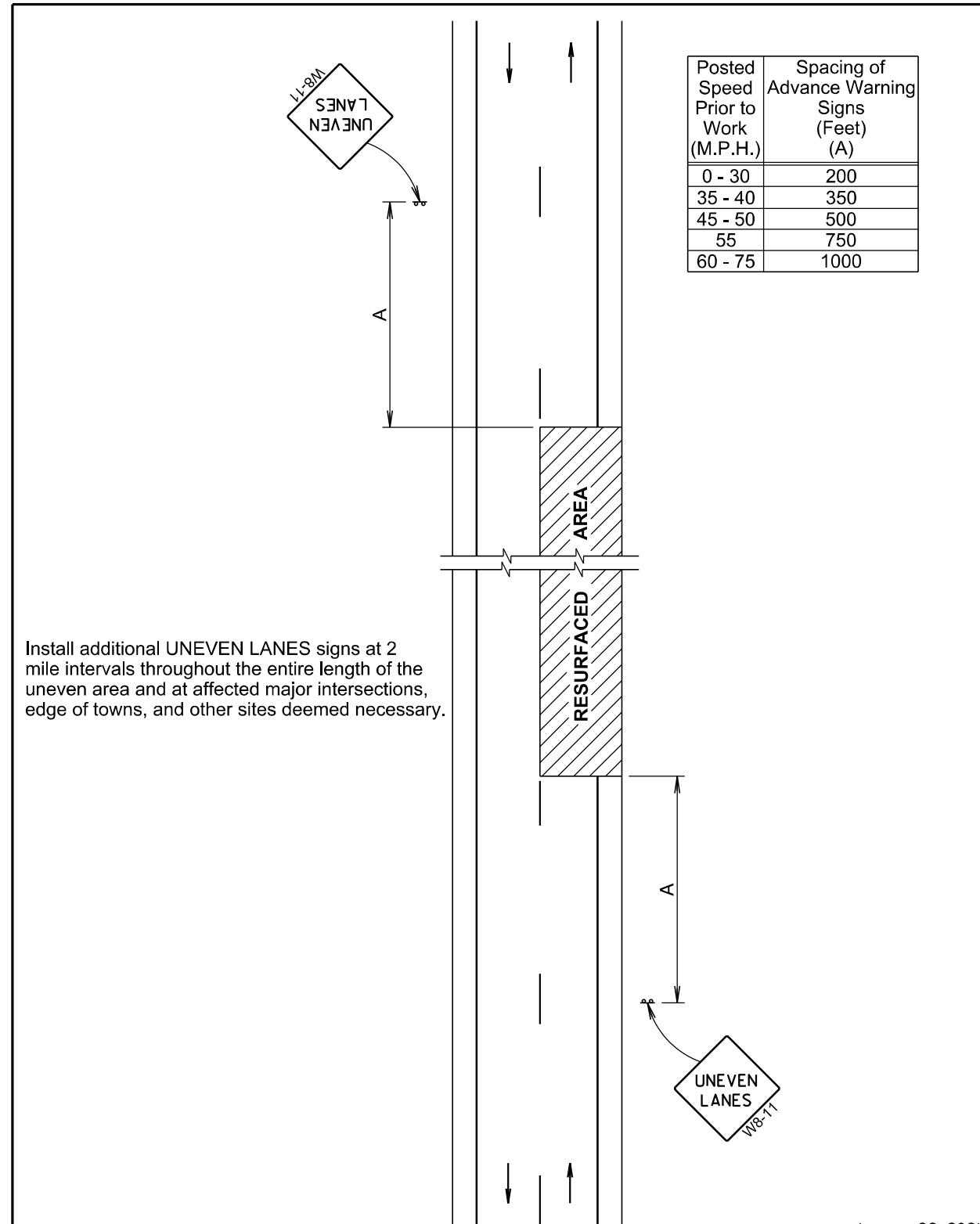
**MOBILE OPERATIONS ON 2-LANE ROAD**

PLATE NUMBER  
634.06

Sheet 1 of 1

FILE - ... \PRJ\CLRK06\WY\BORDER G.DGN

PLOTTED FROM - TRHJUNT04



Install additional UNEVEN LANES signs at 2 mile intervals throughout the entire length of the uneven area and at affected major intersections, edge of towns, and other sites deemed necessary.

January 22, 2021

Published Date: 2024	S D D O T	UNEVEN ROAD SURFACE	PLATE NUMBER 634.22
			Sheet 1 of 1

Posted Speed Prior to Work (M.P.H.)	Spacing of Advance Warning Signs (Feet) (A)	Spacing of Channelizing Devices (Feet) (G)
0 - 30	200	25
35 - 40	350	25
45	500	25
50	500	50
55	750	50
60 - 65	1000	50

- Flagger
- Channelizing Device

For low-volume traffic situations with short work zones on straight roadways where the flagger is visible to road users approaching from both directions, a single flagger may be used.

The ROAD WORK AHEAD and the END ROAD WORK signs may be omitted for short duration operations (1 hour or less).

For tack and/or flush seal operations, when flaggers are not being used, the FRESH OIL sign (W21-2) will be displayed in advance of the liquid asphalt areas.

Flashing warning lights and/or flags may be used to call attention to the advance warning signs.

The channelizing devices will be drums or 42" cones.

Channelizing devices are not required along the centerline adjacent to work area when pilot cars are utilized for escorting traffic through the work area.

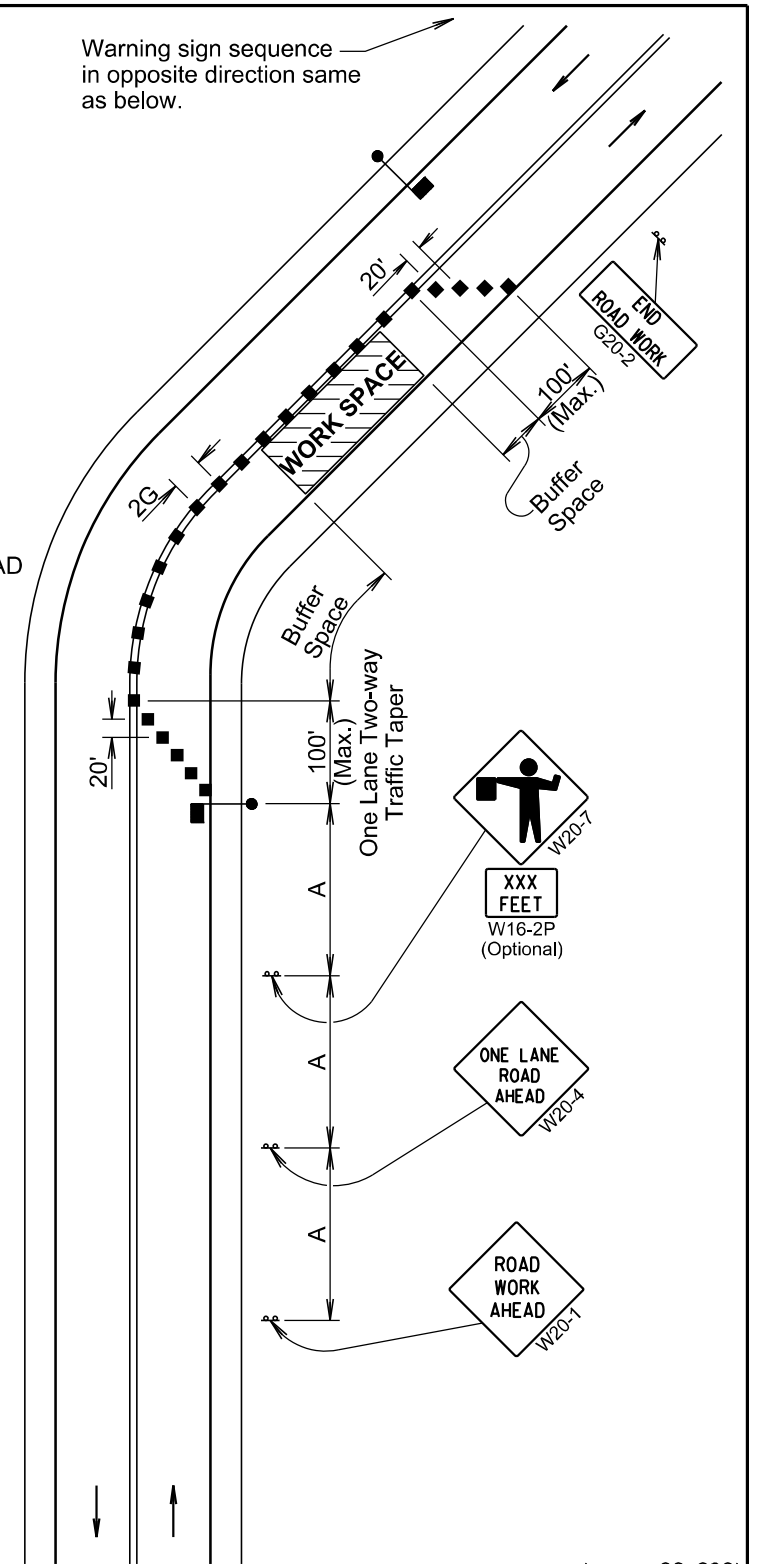
END ROAD WORK G20-2

Channelizing devices and flaggers will be used at intersecting roads to control intersecting road traffic as required.

The buffer space should be extended so that the two-way traffic taper is placed before a horizontal or vertical curve to provide adequate sight distance for the flagger and queue of stopped vehicles.

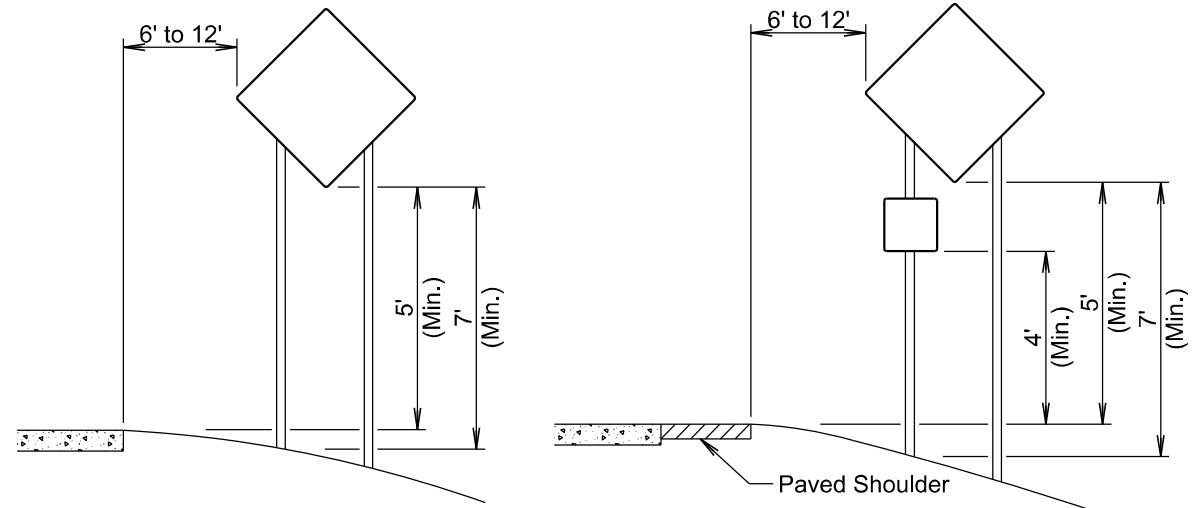
The length of A may be adjusted to fit field conditions.

Warning sign sequence in opposite direction same as below.



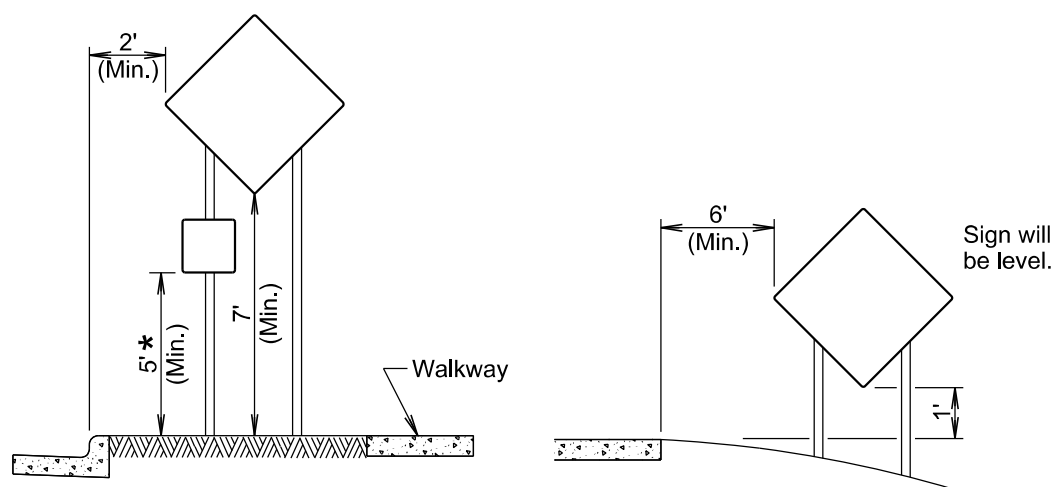
January 22, 2021

Published Date: 2024	S D D O T	LANE CLOSURE WITH FLAGGER PROVIDED	PLATE NUMBER 634.23
			Sheet 1 of 1



**RURAL DISTRICT**

**RURAL DISTRICT WITH SUPPLEMENTAL PLATE**



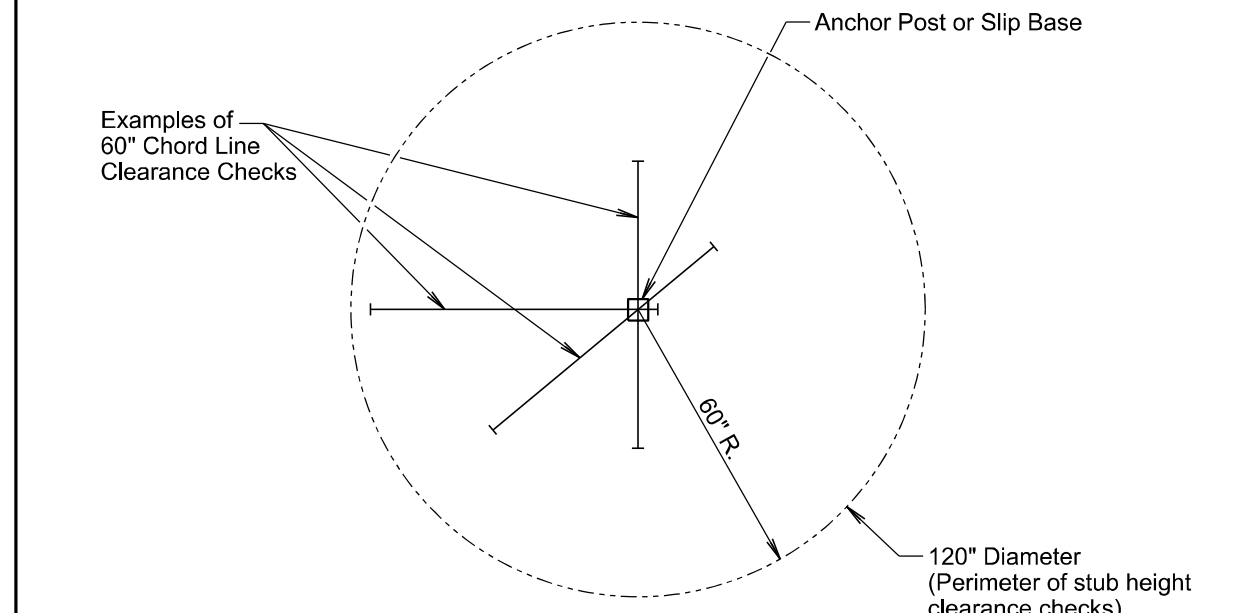
**URBAN DISTRICT**

**RURAL DISTRICT 3 DAY MAXIMUM**  
(Not applicable to regulatory signs)

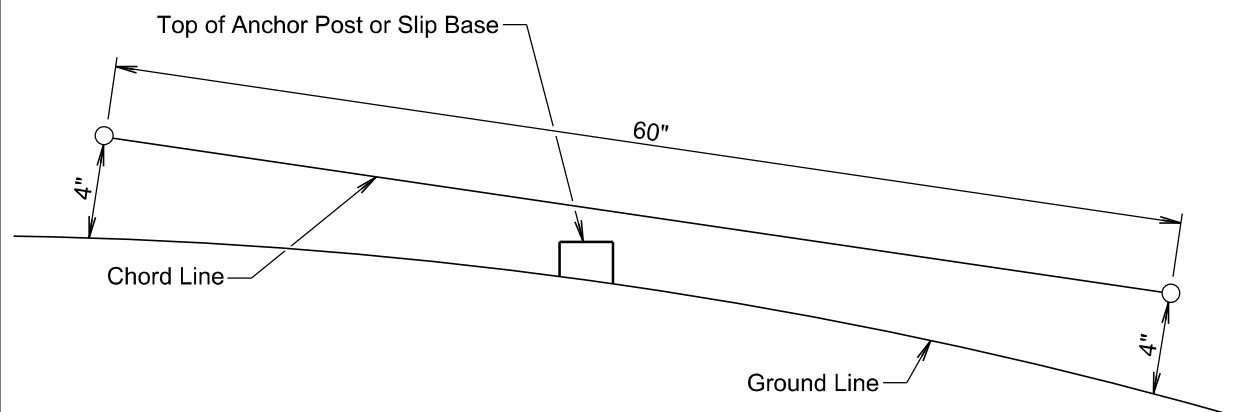
\* If the bottom of supplemental plate is mounted lower than 7 feet above a pedestrian walkway, the supplemental plate should not project more than 4" into the pedestrian facility.

January 22, 2021

Published Date: 2024	S D D O T	CRASHWORTHY SIGN SUPPORTS (Typical Construction Signing)	PLATE NUMBER 634.85
			Sheet 1 of 1



**PLAN VIEW**  
(Examples of stub height clearance checks)



**ELEVATION VIEW**

**GENERAL NOTES:**

- The top of anchor posts and slip bases WILL NOT extend above a 60" chord line within a 120" diameter circle around the post with ends 4" above the ground.
- At locations where there is curb and gutter adjacent to the breakaway sign support, the stub height will be a maximum of 4" above the ground line at the localized area adjacent to the breakaway support stub.
- The 4" stub height clearance is not necessary for U-channel lap splices where the support is designed to yield (bend) at the base.

January 22, 2021

Published Date: 2024	S D D O T	BREAKAWAY SUPPORT STUB CLEARANCE	PLATE NUMBER 634.99
			Sheet 1 of 1

PLOT SCALE - 1:1000

PLOTTED FROM - TRHJUNT04

PLOT NAME - 1

FILE - ... \PRJ\CLR06WY\BORDER G.DGN



## ITEMIZED LIST FOR TRAFFIC CONTROL SIGNS

SIGN CODE	SIGN DESCRIPTION	CONVENTIONAL ROAD			
		NUMBER	SIGN SIZE	SQFT PER SIGN	SQFT
W8-1	BUMP	4	48" x 48"	16.0	64.0
W8-6	TRUCK CROSSING	2	48" x 48"	16.0	32.0
W8-11	UNEVEN LANES	2	48" x 48"	16.0	32.0
W13-1P	ADVISORY SPEED (plaque)	2	30" x 30"	6.3	12.6
W20-1	ROAD WORK AHEAD	2	48" x 48"	16.0	32.0
W20-4	ONE LANE ROAD AHEAD	2	48" x 48"	16.0	32.0
W20-7	FLAGGER (symbol)	2	48" x 48"	16.0	32.0
W21-5	SHOULDER WORK	2	48" x 48"	16.0	32.0
G20-1	ROAD WORK NEXT 6 MILES	2	36" x 18"	4.5	9.0
G20-1	ROAD WORK NEXT 5 MILES	1	36" x 18"	4.5	4.5
G20-1	ROAD WORK NEXT 2 MILES	1	36" x 18"	4.5	4.5
G20-2	END ROAD WORK	2	36" x 18"	4.5	9.0
<b>SPECIAL</b>	<b>WAIT FOLLOW PILOT CAR</b>	4	<b>30" x 18"</b>	3.8	15.2
		<b>CONVENTIONAL ROAD TRAFFIC CONTROL SIGNS SQFT</b>			<b>310.8</b>