

STATE OF SOUTH DAKOTA
 DEPARTMENT OF TRANSPORTATION
 PLANS FOR PROPOSED

FOR BIDDING PURPOSES ONLY

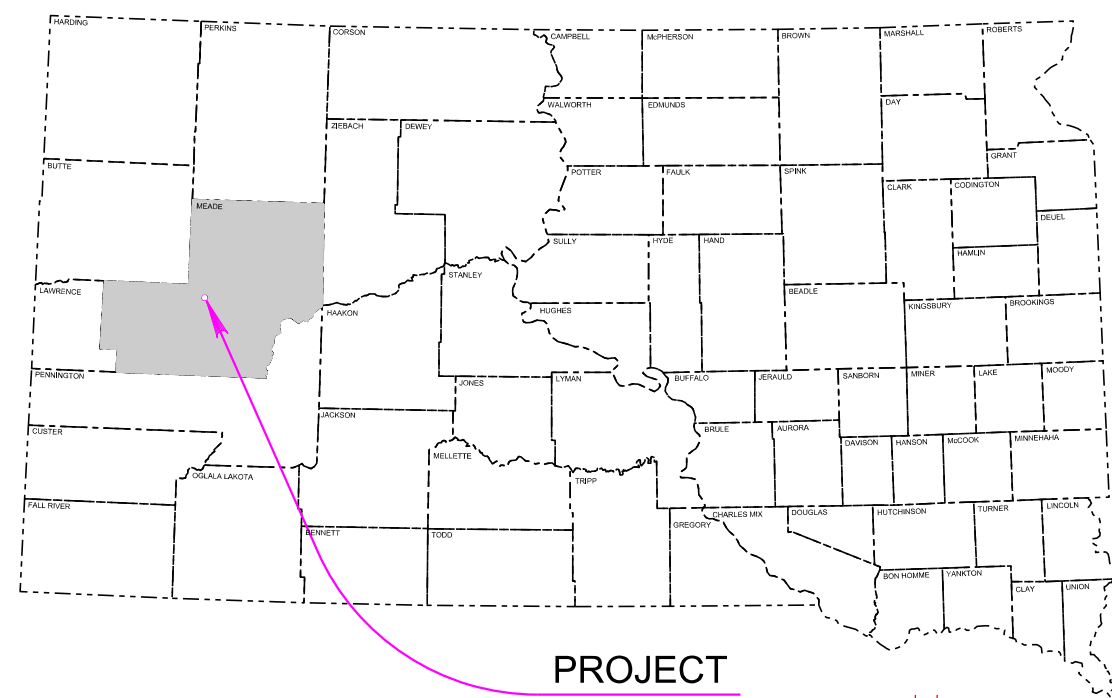
STATE OF SOUTH DAKOTA	PROJECT	SHEET	TOTAL SHEETS
	NH 0034(201)73	1	93
Plotting Date: 2/14/2024		Revised By: RS 2/14/2024	

PROJECT NH 0034(201)73
SD HIGHWAY 34
MEADE COUNTY

STRUCTURE REPLACEMENT, GRADING, ASPHALT PAVEMENT
 PAVEMENT MARKING, AND PERMANENT SIGNING
 PCN 06XN

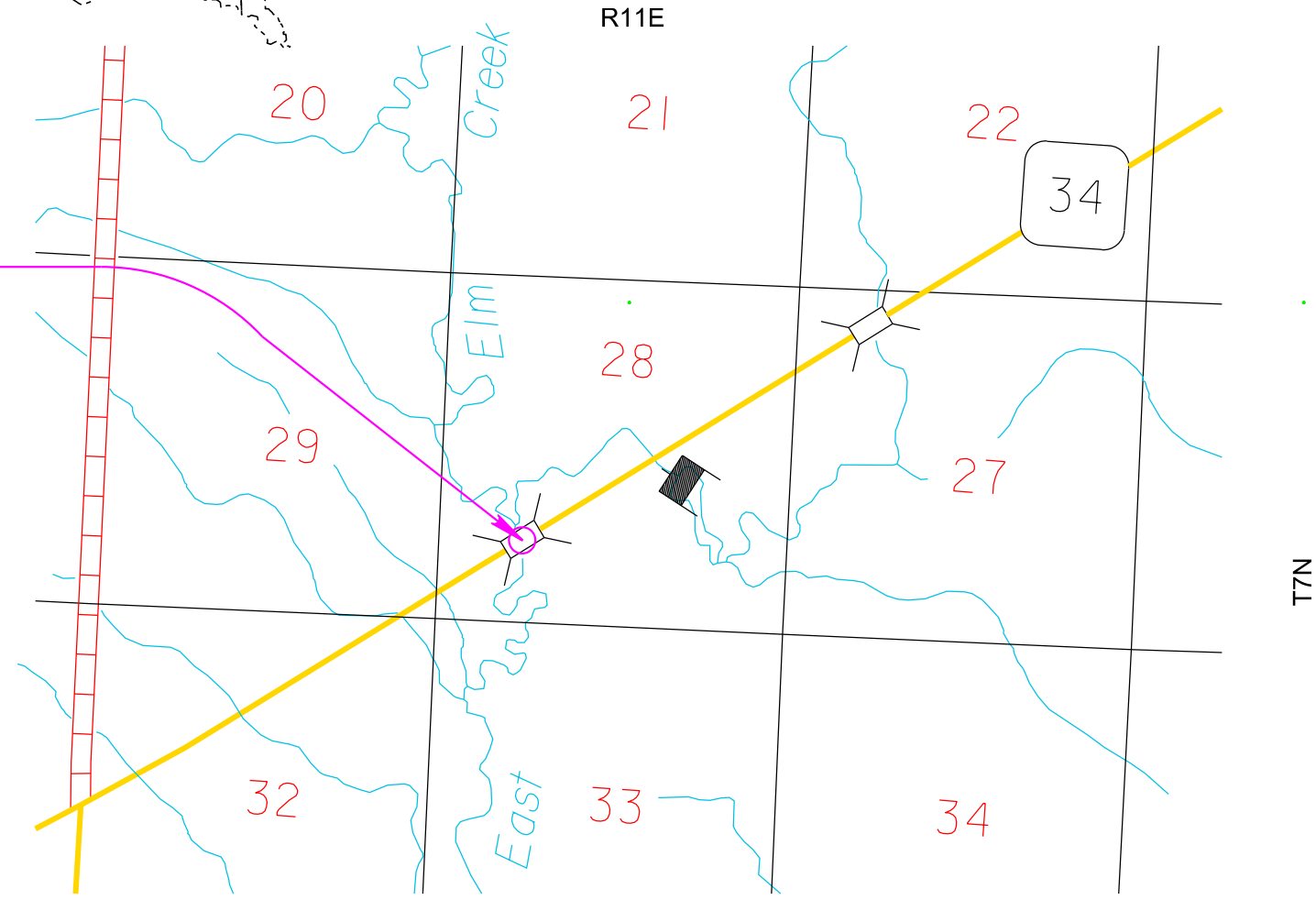
INDEX OF SECTIONS

- Section A: Estimate of Quantities and Environmental Commitments
- Section B: Grading Plans
- Section C: Traffic Control Plans
- Section D: Erosion and Sediment Control Plans
- Section E: Structure Plans
- Section F: Surfacing Plans
- Section M: Pavement Marking Plans
- Section S: Permanent Signing Plans
- Section X: Cross Sections



PROJECT

Str. No. 47-382-348
 MRM 73.31+0.000



DESIGN DESIGNATION

AADT (22)	912
AADT (35)	1860
DHV	209
D	50.0%
DHV T%	12.8%
AADT T%	28.2%
V	70 MPH

STORM WATER PERMIT

Major Receiving
 Body of Water: East Elm Creek
 Area Disturbed: 2.41 acres
 Total Project Area: 4.24
 Approx. Begin Lat,Long: 44°32'06" N, 102°47'45" W



Gross Length	772 Feet	0.146 Miles
Length of Exceptions	0 Feet	0 Miles
Net Length	772 Feet	0.146 Miles

Plot Scale - 1:200

Plotted From - R:Sudmeier

File - ...ICAD\Design Drawings\title.dgn

ESTIMATE OF QUANTITIES AND ENVIRONMENTAL COMMITMENTS

FOR BIDDING PURPOSES ONLY

STATE OF SOUTH DAKOTA	PROJECT	SHEET	TOTAL SHEETS
	NH 0034(201)73	A1	A4

Section B – Grading

BID ITEM NUMBER	ITEM	QUANTITY	UNIT
004E0030	Maintenance of Traffic Diversion(s)	Lump Sum	LS
004E0050	Remove Traffic Diversion(s)	Lump Sum	LS
009E0010	Mobilization	Lump Sum	LS
009E3230	Grade Staking	0.348	Mile
009E3250	Miscellaneous Staking	0.240	Mile
009E3280	Slope Staking	0.240	Mile
009E3290	Structure Staking	1	Each
009E4200	Construction Schedule, Category II	Lump Sum	LS
100E0100	Clearing	Lump Sum	LS
110E0600	Remove Fence	2,030	Ft
110E1010	Remove Asphalt Concrete Pavement	2,098.1	SqYd
110E4290	Salvage Beam Guardrail	806.0	Ft
120E0010	Unclassified Excavation	3,914	CuYd
120E0600	Contractor Furnished Borrow Excavation	9,723	CuYd
120E2000	Undercutting	1,903	CuYd
600E0200	Type II Field Laboratory	1	Each
620E0020	Type 2 Right-of-Way Fence	946	Ft
620E0230	Modified Type 3 Right-of-Way Fence	974	Ft
620E0520	Type 2 Temporary Fence	834	Ft
620E1020	2 Post Panel	19	Each
620E1030	3 Post Panel	2	Each
700E0210	Class B Riprap	716.2	Ton
831E0110	Type B Drainage Fabric	1,120	SqYd

Section C - Traffic Control

BID ITEM NUMBER	ITEM	QUANTITY	UNIT
634E0010	Flagging	500.0	Hour
634E0110	Traffic Control Signs	354.2	SqFt
634E0120	Traffic Control, Miscellaneous	Lump Sum	LS
634E0275	Type 3 Barricade	6	Each
634E0560	Remove Pavement Marking, 4" or Equivalent	500	Ft
634E0600	4" Temporary Pavement Marking Tape Type I	4,288	Ft
634E0900	Portable Temporary Traffic Control Signal	2	Unit
634E1215	Contractor Furnished Portable Changeable Message Sign	2	Each



Section D - Erosion and Sediment Control

BID ITEM NUMBER	ITEM	QUANTITY	UNIT
110E1690	Remove Sediment	2.3	CuYd
110E1693	Remove Erosion Control Wattle	1,200	Ft
110E1700	Remove Silt Fence	800	Ft
230E0010	Placing Topsoil	1,442	CuYd
730E0100	Cover Crop Seeding	2.0	Bu
730E0210	Type F Permanent Seed Mixture	44	Lb
731E0200	Fertilizing	0.80	Ton
732E0100	Mulching	3.4	Ton
734E0044	Soil Stabilizer	1.4	Acre
734E0103	Type 3 Erosion Control Blanket	2,150	SqYd
734E0154	12" Diameter Erosion Control Wattle	1,200	Ft
734E0165	Remove and Reset Erosion Control Wattle	300	Ft
734E0325	Surface Roughening	1.0	Acre
734E0602	Low Flow Silt Fence	800	Ft
734E0610	Mucking Silt Fence	56	CuYd
734E0620	Repair Silt Fence	200	Ft
900E1320	Construction Entrance	1	Each

Section E – Structure Structure No. 47-382-348

BID ITEM NUMBER	ITEM	QUANTITY	UNIT
250E0030	Incidental Work, Structure	Lump Sum	LS

Alternate A

BID ITEM NUMBER	ITEM	QUANTITY	UNIT
420E0200	Structure Excavation, Box Culvert	222	CuYd
421E0200	Box Culvert Undercut	308	CuYd
460E0120	Class A45 Concrete, Box Culvert	502.4	CuYd
480E0100	Reinforcing Steel	73,275	Lb
700E0210	Class B Riprap	95.8	Ton
831E0110	Type B Drainage Fabric	116	SqYd

Alternate B

BID ITEM NUMBER	ITEM	QUANTITY	UNIT
420E0200	Structure Excavation, Box Culvert	194	CuYd
421E0200	Box Culvert Undercut	277	CuYd
464E0100	Controlled Density Fill	35.7	CuYd
560E2174	2-12'x10' Precast Concrete Box Culvert, Furnish	172.0	Ft
560E2175	2-12'x10' Precast Concrete Box Culvert, Install	172.0	Ft
560E3174	2-12'x10' Precast Concrete Box Culvert End Section, Furnish	4	Each
560E3175	2-12'x10' Precast Concrete Box Culvert End Section, Install	4	Each
700E0210	Class B Riprap	100.5	Ton
831E0110	Type B Drainage Fabric	122	SqYd

Revised By: RS 9/05/24

INDEX OF SHEETS

A1 Estimate of Quantities for Sections B, C, D, E, F, M, and S
A2 to A4 Environmental Commitments

Section F – Surfacing

BID ITEM NUMBER	ITEM	QUANTITY	UNIT
120E6200	Water for Granular Material	27.0	MGal
260E1010	Base Course	2,278.6	Ton
320E1200	Asphalt Concrete Composite	553.7	Ton

Section M - Pavement Marking

BID ITEM NUMBER	ITEM	QUANTITY	UNIT
633E1220	High Build Waterborne Pavement Marking Paint, 4" White	1,140	Ft
633E1222	High Build Waterborne Pavement Marking Paint, 4" Yellow	548	Ft
634E0560	Remove Pavement Marking, 4" or Equivalent	50	Ft

Section S – Permanent Signing

BID ITEM NUMBER	ITEM	QUANTITY	UNIT
110E0130	Remove Traffic Sign	2	Each
110E0135	Remove Delineator	1	Each
632E1320	2.0"x2.0" Perforated Tube Post	16.0	Ft
632E2022	4"x4" White Delineator Back to Back with 1.12 Lb/Ft Post	4	Each
632E2510	Type 2 Object Marker Back to Back	4	Each
632E3205	Flat Aluminum Sign, Nonremovable Copy Super/Very High Intensity	6.0	SqFt

SPECIFICATIONS

Standard Specifications for Roads and Bridges, 2015 Edition and Required Provisions, Supplemental Specifications, and Special Provisions as included in the Proposal.

ENVIRONMENTAL COMMITMENTS

The SDDOT is committed to protecting the environment and uses Environmental Commitments as a communication tool for the Engineer and Contractor to ensure that attention is given to avoid, minimize, and/or mitigate an environmental impact. Environmental commitments to various agencies and the public have been made to secure approval of this project. An agency with permitting authority can delay a project if identified environmental impacts have not been adequately addressed. Unless otherwise designated, the Contractor's primary contact regarding matters associated with these commitments will be the Project Engineer. During construction, the Project Engineer will verify that the Contractor has met Environmental Commitment requirements. These environmental commitments are not subject to change without prior written approval from the SDDOT Environmental Office.

Additional guidance on SDDOT's Environmental Commitments can be accessed through the Environmental Procedures Manual found at: <<https://dot.sd.gov/media/documents/EnvironmentalProceduresManual.pdf>>

For questions regarding change orders in the field that may have an effect on an Environmental Commitment, the Project Engineer will contact the Environmental Engineer at 605-773-3180 or 605-773-4336 to determine whether an environmental analysis and/or resource agency coordination is necessary.

Once construction is complete, the Project Engineer will review all environmental commitments for the project and document their completion.

COMMITMENT A: AQUATIC RESOURCES

COMMITMENT A1: WETLANDS

All efforts to avoid and minimize wetland impacts from the project have resulted in approximately 0.15 acres of wetlands (includes temporary and permanent) becoming impacted. Refer to plans for location and boundaries of the impacted wetlands.

Table of Impacted Wetlands

Wetland No.	Station	Perm. Impact Left (Acres)	Perm. Impact Right (Acres)	Temp. Impact Left (Acres)	Temp. Impact Right (Acres)	Total Impact (Acres)
1	915+00-916+00	0.033	0.032	0.071	0.011	0.15

Action Taken/Required:

Mitigation is required in accordance with the "Statewide Finding Regarding Wetlands for South Dakota Federal-Aid Highway Projects (February 2018)". Replacement of 0.065 acres of permanent wetland impacts will be completed through another wetland mitigation opportunity in a manner which considers FHWA's program-wide goal of 'net gain' of wetlands through enhancement, creation, and preservation.

Temporary impacts identified in the Table of Impacted Wetlands will not be mitigated as original contours and elevations will be re-established. Prior to initiating temporary work in wetlands, the Contractor will submit a plan to the Project Engineer in accordance with Section 7.21 D of the Specifications.

The Contractor will notify the Project Engineer if additional easement is needed to complete work adjacent to any wetland. The Project Engineer will obtain an appropriate course of action from the Environmental Office before proceeding with construction activities that affect any wetlands beyond the work limits and easements shown in the plans.

COMMITMENT A2: STREAMS

All efforts to avoid and minimize stream impacts from the project have resulted in approximately 0.22 acres of stream (includes temporary and permanent) becoming impacted. Refer to plans for location and boundaries of the impacted streams.

Table of Impacted Streams

Stream Name	Station	Perm. Impact (Acres)	Temp. Impact (Acres)	Total Impact (Acres)
East Elm Creek	915+50	0.088	0.133	0.22

Action Taken/Required:

It has been determined that project impacts do not require mitigation. Temporary impacts identified in the Table of Impacted Streams will not be mitigated as the finished ground under the bridge will be shaped to match the upstream channel and flood plain and the existing low water channel will be maintained as near as practical to the existing location.

The contractor will complete excavation after temporary diversion is in place, if required, with minimal standing water to create the profile of slope protection specified in plans. Once the instream work is completed, the removed material will be placed on top of the riprap to match the natural ground, proposed groundline, or specified shape and elevations shown in plans. When overburden extends into the streambed it will form the channel bottom and profile as specified in plans. The finished ground under the bridge will be shaped to match the upstream and downstream channel and flood plain. See Overburden Excavation for Riprap note within structure sheets.

The Contractor will notify the Project Engineer if additional easement is needed to complete work adjacent to any stream. The Project Engineer will obtain an appropriate course of action from the Environmental Office before proceeding with construction activities that affect any streams beyond the work limits and easements shown in the plans.

COMMITMENT B: FEDERALLY THREATENED, ENDANGERED, AND PROTECTED SPECIES

COMMITMENT B2: WHOOPING CRANE

The Whooping Crane is a spring and fall migratory bird in South Dakota that is about 5 feet tall and typically stops on wetlands, rivers, and agricultural lands along their migration route. An adult Whooping Crane is white with a red crown and a long, dark, pointed bill. Immature Whooping Cranes are cinnamon brown. While in flight, their long necks are kept straight and their long dark legs trail behind. Adult Whooping Cranes' black wing tips are visible during flight.

Action Taken/Required:

Harassment or other measures to cause the Whooping Crane to leave the site is a violation of the Endangered Species Act. If a Whooping Crane is sighted roosting in the vicinity of the project, borrow pits, or staging areas associated with the project, cease construction activities in the affected area until the Whooping Crane departs and immediately contact the Project Engineer. The Project Engineer will contact the Environmental Office so that the sighting can be reported to USFWS.

COMMITMENT C: WATER SOURCE

The Contractor will not withdraw water with equipment previously used outside the State of South Dakota or previously used in aquatic invasive species (AIS) positive waters within South Dakota without prior approval from the SDDOT Environmental Office. To prevent and control the introduction and spread of invasive species into the project vicinity, all equipment will be power washed with hot water (≥140 °F) and completely dried for a minimum of 7 days prior to subsequent use. South Dakota administrative rule 41:10:04:02 forbids the possession and transport of AIS; therefore, all attached dirt, mud, debris and vegetation must be removed and all compartments and tanks capable of holding standing water must be drained. This includes, but is not limited to, all equipment, pumps, lines, hoses and holding tanks.

Action Taken/Required:

The Contractor will obtain the necessary permits from the regulatory agencies such as the South Dakota Department of Agriculture and Natural Resources (DANR) and the United States Army Corps of Engineers (USACE) prior to water extraction activities.

Additional information and mapping of water sources impacted by Aquatic Invasive Species in South Dakota can be accessed at: <<https://sdleastwanted.sd.gov/maps/default.aspx>>

<[South Dakota Administrative Rule 41:10:04 Aquatic Invasive Species: https://sdlegislature.gov/rules/DisplayRule.aspx?Rule=41:10:04](https://sdlegislature.gov/rules/DisplayRule.aspx?Rule=41:10:04)>

COMMITMENT D: WATER QUALITY STANDARDS

COMMITMENT D1: SURFACE WATER QUALITY

East Elm Creek is classified as warm water, marginal fishery with a total suspended solids standard of less than 150 mg/L 30-day average, less than 263 mg/L daily maximum.

This project may be in the vicinity of multiple streams and wetlands. These waters are considered waters of the state and are protected under Administrative Rules of South Dakota (ARSD) Chapter 74:51. Special construction measures may have to be taken to ensure that this water body is not impacted.



ESTIMATE OF QUANTITIES AND ENVIRONMENTAL COMMITMENTS

FOR BIDDING PURPOSES ONLY

STATE OF SOUTH DAKOTA	PROJECT	SHEET	TOTAL SHEETS
	NH 0034(201)73	A3	A4

Revised By: RS 1/312024

COMMITMENT D1: SURFACE WATER QUALITY, Continued

Action Taken/Required:

The Contractor is advised that the South Dakota Surface Water Quality Standards, administered by the South Dakota Department of Agriculture and Natural Resources (DANR), apply to this project. Special construction measures will be taken to ensure the above standard(s) of the surface waters are maintained and protected.

COMMITMENT D2: SURFACE WATER DISCHARGE

The DANR General Permit for Temporary Discharge is required for temporary dewatering and discharges to waters of the state. The effluent limit for total suspended solids will be 90 mg/L 30-day average. The effluent limit applies to discharges to all waters of the state except discharges to waters classified as cold water permanent fish life propagation waters according to the ARSD 74:51:01:45. For discharges to waters of the state classified as cold water permanent fish life propagation waters, the effluent limit for total suspended solids will be 53 mg/L daily maximum.

The permittee has the option of completing effluent testing or implementing a pollution prevention plan for compliance with this permit. If the permittee develops a pollution prevention plan instead of total suspended solids sampling, the plan must be developed and implemented prior to discontinuing total suspended solids sampling. Refer to Section 4.0 of the permit. If any pollutants are suspected of being discharged, a sample must be taken for those parameters listed in Section 3.4 of the permit.

Refer to Commitment D1: Surface Water Quality for stream classification.

Action Taken/Required:

If construction dewatering is required and this project is currently covered under a General Permit for Stormwater Discharges Associated with Construction Activities, the contractor will need to submit the dewatering information to the SDDANR using the following form:

<
https://danr.sd.gov/OfficeOfWater/SurfaceWaterQuality/docs/DANR_AddTempInfoFillable.pdf >

The Contractor will provide a copy of the approved permit or the submitted dewatering information to the Project Engineer prior to proceeding with any dewatering activities. The approved permit or submitted dewatering information must be kept on-site and as part of the project records.

Effluent monitoring, as a result of dewatering activities, will be summarized for each month and recorded on a separate Discharge Monitoring Report (DMR) and submitted to DANR monthly. Additional information can be found at:

<
<https://danr.sd.gov/OfficeOfWater/SurfaceWaterQuality/swdpermitting/Ereporting.aspx> >

COMMITMENT E: STORM WATER

Construction activities constitute 1 acre or more of earth disturbance and/or work in a waterway.

Action Taken/Required:

The DANR General Permit for Stormwater Discharges Associated with Construction Activities is required for construction activity disturbing one or more acres of earth and work in a waterway. The SDDOT is the owner of this permit and will submit the NOI to DANR 15 days prior to project start in order to obtain coverage under the General Permit. Work can begin once the DANR letter of approval is received.

The Contractor must adhere to the "Special Provision Regarding Storm Water Discharges to Waters of the State."

The Contractor will complete the DANR Contractor Certification Form prior to the pre-construction meeting. The form certifies under penalty of law that the Contractor understands and will comply with the terms and conditions of the permit for this project. Work may not begin on this project until this form is signed and submitted to DANR.

The form can be found at:

<
https://danr.sd.gov/OfficeOfWater/SurfaceWaterQuality/docs/DANR_CGPApendixCCA2018Fillable.pdf >

The Contractor is advised that permit coverage may also be required for off-site activities, such as borrow and staging areas, which are the responsibility of the Contractor.

Storm Water Pollution Prevention Plan

The Storm Water Pollution Prevention Plan (SWPPP) will be developed prior to the submittal of the NOI and will be implemented for all construction activities for compliance with the permit. The SWPPP must be kept on-site and updated as site conditions change. Erosion control measures and best management practices will be implemented in accordance with the SWPPP.

The DOT 298 Form will be used for site inspections and to document changes to the SWPPP. A copy of the completed inspection form will be filed with the SWPPP documents and retained for a minimum of three years.

The inspection will include disturbed areas of the construction site that have not been finally stabilized, areas used for storage materials, structural control measures, and locations where vehicles enter or exit the site. These areas will be inspected for evidence of, or the potential for, pollutants entering the drainage system. Erosion and sediment control measures identified in the SWPPP will be observed to ensure that they are operating correctly, and sediment is not tracked off the site.

Information on storm water permits and SWPPPs are available on the following websites:

SDDOT: < <https://dot.sd.gov/doing-business/environmental/stormwater> >

DANR:<
<https://danr.sd.gov/OfficeOfWater/SurfaceWaterQuality/stormwater/default.aspx> >

EPA: < <https://www.epa.gov/npdes> >

COMMITMENT F: SEASONAL WORK RESTRICTION

The State of South Dakota Game, Fish, and Parks has designated a warm water fishery associated with this project.

Action Taken/Required:

Construction or demolition activities should not take place during the Seasonal Work Restriction listed in the below table to avoid conflicts with spawning fish. If flows during this time are nonexistent or extremely low, the seasonal use restriction may not be applicable. The Contractor will not conduct in-stream work during the Seasonal Work Restriction without prior approval from the SDDOT Environmental Office.

Stream Name	Stream Classification	Seasonal Work Restriction
East Elm Creek	Warm Water	April 1 to June 30

COMMITMENT H: WASTE DISPOSAL SITE

The Contractor will furnish a site(s) for the disposal of construction and/or demolition debris generated by this project.

Action Taken/Required:

Construction and/or demolition debris may not be disposed of within the Public ROW.

The waste disposal site(s) will be managed and reclaimed in accordance with the following from the General Permit for Construction/Demolition Debris Disposal Under the South Dakota Waste Management Program issued by the Department of Agriculture and Natural Resources.

The waste disposal site(s) will not be located in a wetland, within 200 feet of surface water, or in an area that adversely affects wildlife, recreation, aesthetic value of an area, or any threatened or endangered species, as approved by the Environmental Office and the Project Engineer.



ESTIMATE OF QUANTITIES AND ENVIRONMENTAL COMMITMENTS

FOR BIDDING PURPOSES ONLY

STATE OF SOUTH DAKOTA	PROJECT	SHEET	TOTAL SHEETS
	NH 0034(201)73	A4	A4

Revised By: RS 1/31/2024

COMMITMENT H: WASTE DISPOSAL SITE, Continued

If the waste disposal site(s) is located such that it is within view of any ROW, the following additional requirements will apply:

1. Construction and/or demolition debris consisting of concrete, asphalt concrete, or other similar materials will be buried in a trench separate from wood debris. The final cover over the construction and/or demolition debris will consist of a minimum of 1 foot of soil capable of supporting vegetation. Waste disposal sites provided outside of the Public ROW will be seeded in accordance with Natural Resources Conservation Service recommendations. The seeding recommendations may be obtained through the appropriate County NRCS Office. The Contractor will control the access to waste disposal sites not within the Public ROW with fences, gates, and placement of a sign or signs at the entrance to the site stating, "No Dumping Allowed".

2. Concrete and asphalt concrete debris may be stockpiled within view of the ROW for a period not to exceed the duration of the project. Prior to project completion, the waste will be removed from view of the ROW or buried, and the waste disposal site reclaimed as noted above.

The above requirements will not apply to waste disposal sites that are covered by an individual solid waste permit as specified in SDCL 34A-6-58, SDCL 34A-6-1.13, and ARSD 74:27:10:06.

Failure to comply with the requirements stated above may result in civil penalties in accordance with South Dakota Solid Waste Law, SDCL 34A-6-1.31.

All costs associated with furnishing waste disposal site(s), disposing of waste, maintaining control of access (fence, gates, and signs), and reclamation of the waste disposal site(s) will be incidental to the various contract items.

COMMITMENT I: HISTORIC PRESERVATION OFFICE CLEARANCES

The SDDOT has obtained concurrence with the State Historic Preservation Office (SHPO) for all work included within the project limits and all department designated sources and designated option material sources, stockpile sites, storage areas, and waste sites provided within the plans.

Action Taken/Required:

All earth disturbing activities not designated within the plans require a cultural resource review prior to scheduling the pre-construction meeting. This work includes but is not limited to: Contractor furnished material sources, material processing sites, stockpile sites, storage areas, plant sites, and waste areas.

The Contractor will arrange and pay for a record search and when necessary, a cultural resource survey. The Contractor has the option to contact the state Archaeological Research Center (ARC) at 605-394-1936 or another qualified archaeologist, to obtain either a records search or a cultural resources survey. A record search might be sufficient for review if the site was previously surveyed; however, a cultural resources survey may need to be conducted by a qualified archaeologist.

The Contractor will provide ARC with the following: a topographical map or aerial view in which the site is clearly outlined, site dimensions, project number, and PCN. If applicable, provide evidence that the site has been

previously disturbed by farming, mining, or construction activities with a landowner statement that artifacts have not been found on the site.

The Contractor will submit the cultural resources survey report to SDDOT Environmental Office, 700 East Broadway Avenue, Pierre, SD 57501-2586. SDDOT will submit the information to the appropriate SHPO/THPO. Allow **30 Days** from the date this information is submitted to the Environmental Engineer for SHPO/THPO review.

In the event of an inadvertent discovery of human remains, funerary objects, or if evidence of cultural resources is identified during project construction activities, then such activities within 150 feet of the inadvertent discovery will immediately cease and the Project Engineer will be immediately notified. The Project Engineer will contact the SDDOT Environmental Office, who will contact the appropriate SHPO/THPO within 48 hours of the discovery to determine an appropriate course of action.

SHPO review does not relieve the Contractor of the responsibility for obtaining any additional permits and clearances for Contractor furnished material sources, material processing sites, stockpile sites, storage areas, plant sites, and waste areas that affect wetlands, threatened and endangered species, or waterways. The Contractor will not utilize a site known or suspected of having contaminated soil or water. The Contractor will provide the required permits and clearances to the Project Engineer at the preconstruction meeting.

COMMITMENT J: CONSTRUCTION PRACTICES FOR TEMPORARY WORKS IN WATERWAYS OF THE U.S.

The Contractor is advised that special construction measures must be taken to ensure that the waterways of the U.S. are not impacted.

Action Taken/Required:

Excavation will not occur below the ordinary high-water elevation in waterways outside of caissons, cribs, cofferdams, steel piling, or sheeting. The natural streambed will not be disturbed unless specified by the plans and under the observation of the Project Engineer. Refer to the Table of U.S. Waterways to Protect for ordinary high-water elevations. Any structure work over or within the waterway will be constructed according to Section 7.21 C of the Specifications.

All dredged or excavated materials will be placed at a site above the ordinary high-water elevation in a confined area (not classified as a wetland) that is a minimum of 50 feet away from concentrated flows of storm water, drainage courses, and inlets to prevent return of such material to the waterway.

The construction of temporary work platforms, crossings, or berms below the ordinary high-water elevation will be allowed if all material placed below the ordinary high-water elevation consists of Class B or larger riprap.

All temporary caissons, cribs, cofferdams, steel piling, sheeting, work platforms, crossings, and berms will be removed with minimal disturbance to the streambed. Proper construction practices will be used to minimize increases in suspended solids and turbidity in the waterway.

Bridge berms, wing dams, traffic diversions, channel reconstruction, stream diversions, grading, etc. will be constructed in close conformity with the plans to ensure that the hydraulic capacity of the waterway is not changed.

Temporary waterway crossings required for the Contractor's construction operations will be constructed with an adequate drainage structure size and minimum fill height to reduce the potential for upstream flooding. The Contractor will be responsible for sizing the temporary drainage structure for these crossings.

All temporary works in waterways of the US are required to be covered in the Corp of Engineers 404 Permit. At the time of the preconstruction meeting, the Contractor will submit documentation for all temporary works for the purpose of complying with the 404 Permit requirements in accordance with Section 423.3 A of the Specifications.

Table of U.S. Waterways to Protect

Station	Waterway	Ordinary High-Water Elevation
915+50	East Elm Creek	2696.9'

Stream channel excavation within "Waters of the US" is subject to USACE regulatory jurisdiction. Stream channel excavation cannot exceed the permitted quantities and/or surface area. The 404 Permit is included in the Special Provisions.

The Contractor will take all precautions necessary to prevent any incidental discharges associated with the excavation and hauling of material from the stream channel. This pertains to any excavation operations such as, foundation, pier, or abutment excavation, channel cleanout, excavation for riprap protection, and removal of any temporary fill associated with construction activities.

COMMITMENT N: SECTION 404 PERMIT

The SDDOT has obtained a Section 404 Permit from the USACE for the permanent actions associated with this project.

Action Taken/Required:

The Contractor will comply with all requirements contained in the Section 404 Permit.

The Contractor will also be responsible for obtaining a Section 404 Permit for any dredge, excavation, or fill activities associated with material sources, storage areas, waste sites, and Contractor work sites outside the plan work limits that affect wetlands, floodplains, or waters of the United States.

