

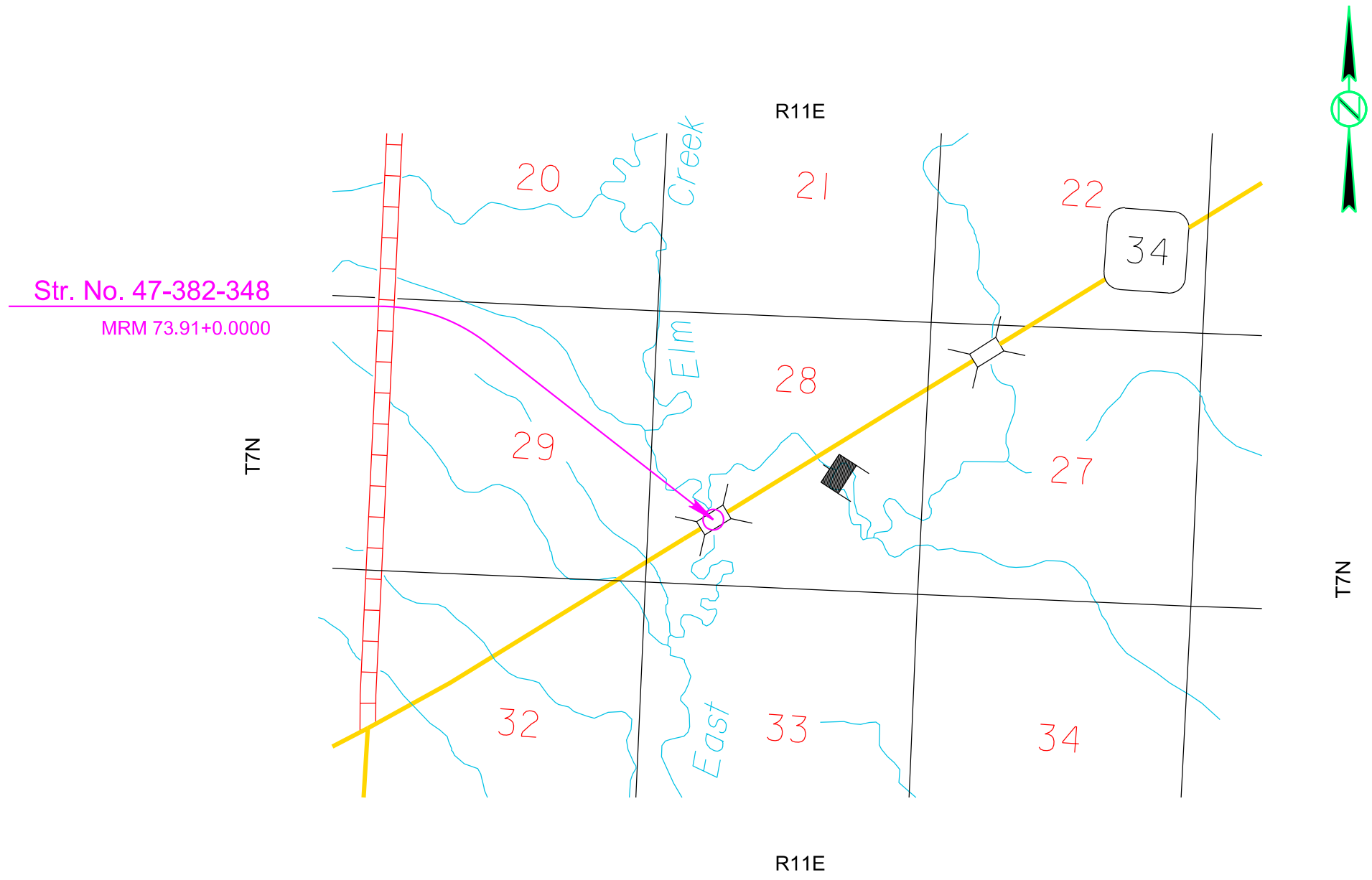
Section F: Surfacing Plans

STATE OF SOUTH DAKOTA	PROJECT	SHEET	TOTAL SHEETS
	NH 0034(201)73	F1	F5

Plotting Date: 08/31/2023

INDEX OF SHEETS

F1	General Layout with Index
F2	Estimate of Quantities, Notes, Rates, and Tables
F3-F4	Typical Surfacing Sections
F5	Special Detail



SECTION F – ESTIMATE OF QUANTITIES

STATE OF SOUTH DAKOTA	PROJECT	SHEET	TOTAL SHEETS
	NH 0034(201)73	F2	F5

Plotting Date: 08/31/2023

BID ITEM NUMBER	ITEM	QUANTITY	UNIT
120E6200	Water for Granular Material	27.0	MGal
260E1010	Base Course	2,278.6	Ton
320E1200	Asphalt Concrete Composite	553.7	Ton

SURFACING THICKNESS DIMENSIONS

Plans quantity will be applied though the thickness may vary from that shown on the plans.

At those locations where material must be placed to achieve a required elevation, plans quantity may be varied to achieve the required elevation.

ASPHALT CONCRETE COMPOSITE

Asphalt Concrete Composite will include MC-70 Asphalt for Prime placed at the rate of 0.30 gallons per square yard. The Asphalt for Prime will be applied to the Base Course for the full width of the bottom layer of Asphalt Concrete Composite plus one foot additional on the outside shoulder.

The asphalt binder used in the mixture will be PG 58-34 or PG 64-34.

Asphalt for tack SS-1h or CSS-1h will be applied prior to each lift of Asphalt Concrete Composite. Asphalt for tack will be applied at a rate of 0.09 gallons per square yard on existing pavement or milled asphalt concrete surfaces and at a rate of 0.06 gallons per square yard on primed base course or new asphalt concrete pavement. The Asphalt for tack will be applied for the full width of the bottom layer of Asphalt Concrete Composite plus one-half foot additional on the outside shoulder. Blotting Sand for Prime will be placed at the rate of 10 pounds per square yard at a width of 24 feet

TABLE OF ADDITIONAL QUANTITIES

Location-Description	Water for Granular Material Mgal	Base Course Ton	Asphalt Concrete Composite (1 st / 2 nd Lift) Ton
Mainline – SD 34			
Sta. 913+00 to 918+70	21.4	1,794.9	270.7 / 248.7
Transitions			
Sta. 913+00 to 913+80			18.5
Sta. 917+90 to 918+70			15.8
Traffic Diversion	4.9	423.7	
Entrance – 1	0.7	60.0	
TOTAL	27.0	2,278.6	553.7

1:200
Plot Scale -

Plotted From - TRPR15123



File - ...apjmead06XNNotesSectionF.dgn

IN PLACE TYPICAL SECTIONS

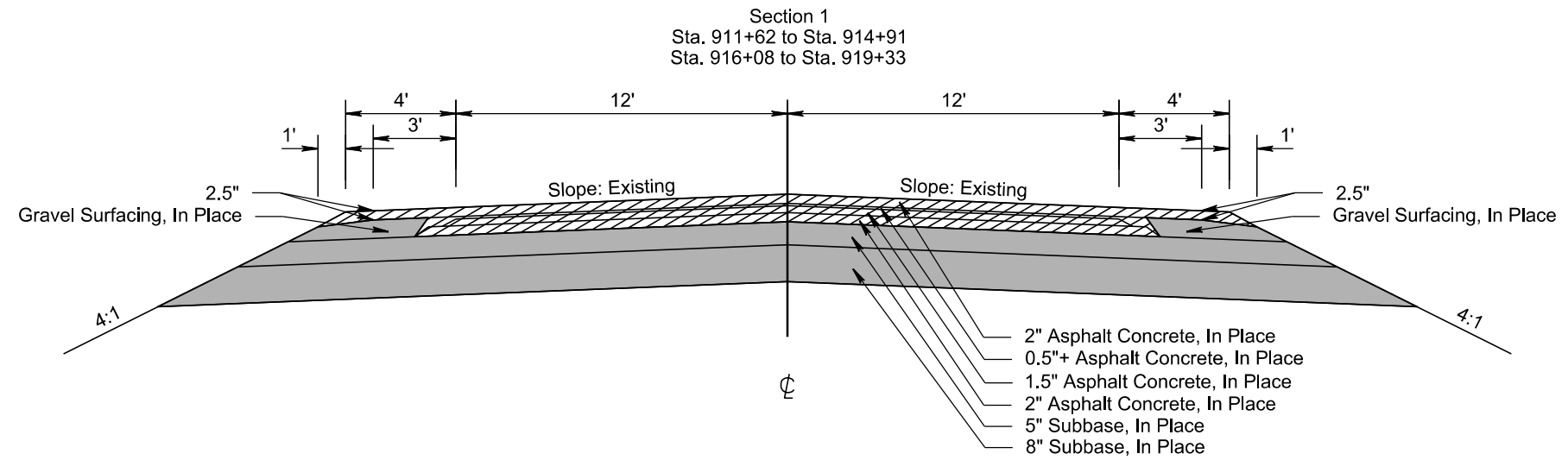
STATE OF SOUTH DAKOTA	PROJECT	SHEET	TOTAL SHEETS
	NH 0034(201)73	F3	F5

Plotting Date: 08/31/2023

PLOT SCALE - 1+6.00001

-  Remove Asphalt Concrete
-  Unclassified Excavation

Bridge:
Sta. 914+91 to Sta. 916+08



PLOTTED FROM - IRP15123

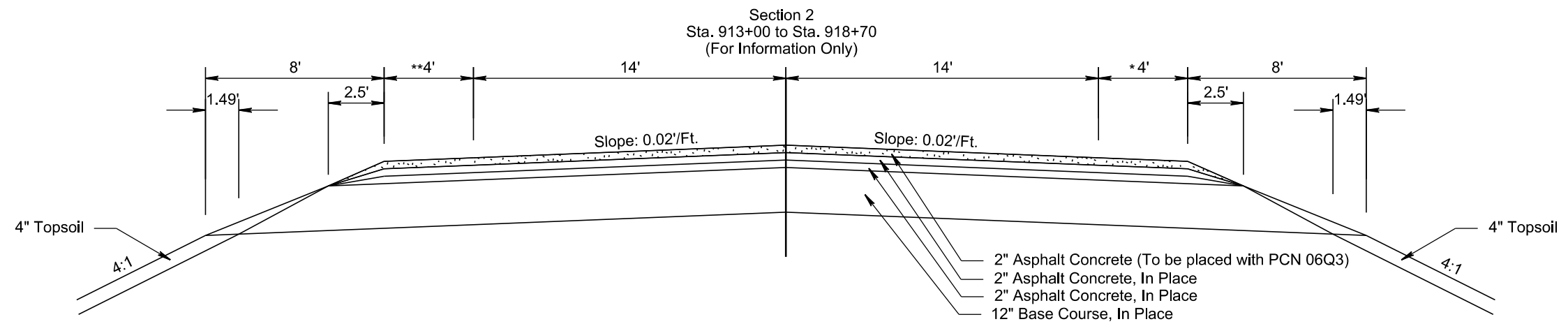
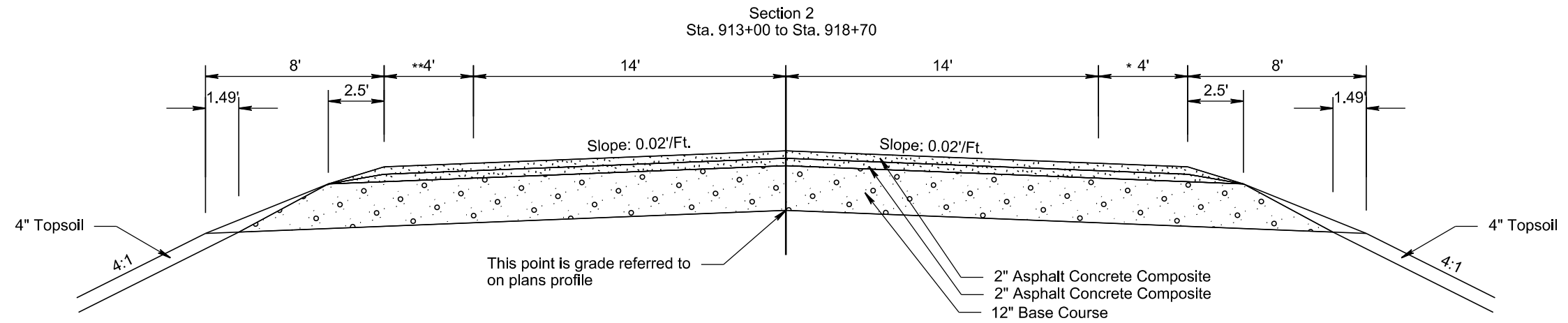
PLOT NAME - 3

FILE - ... \06XN_TYPICAL_SECTIONS.DGN

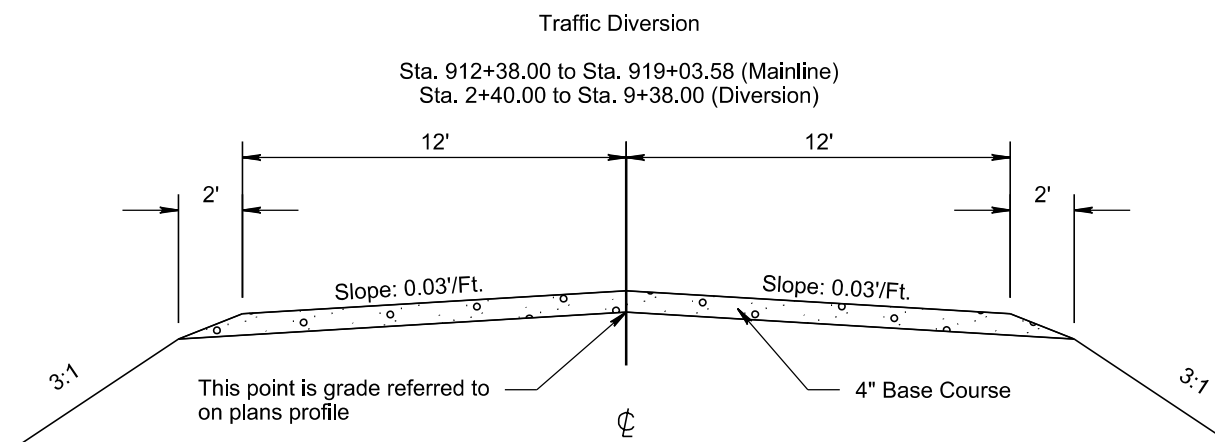
TYPICAL SURFACING SECTIONS

STATE OF SOUTH DAKOTA	PROJECT NH 0034(201)73	SHEET F4	TOTAL SHEETS F5
-----------------------	---------------------------	-------------	--------------------

Plotting Date: 01/30/2024
Revised: 30Jan24, LLR



- Transitions:
- Sta. 913+00 to Sta. 914+00
* 11.8' to 4'
 - Sta. 918+20 to Sta. 918+70
* 4' to 2.1'
 - Sta. 913+00 to Sta. 913+50
** 2.2' to 4'
 - Sta. 918+20 to Sta. 918+70
** 4' to 2.8'



PLOT SCALE - 1+6.00001

PLOTTED FROM - TRPR15123

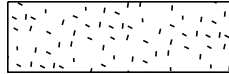

PLOT NAME - 4

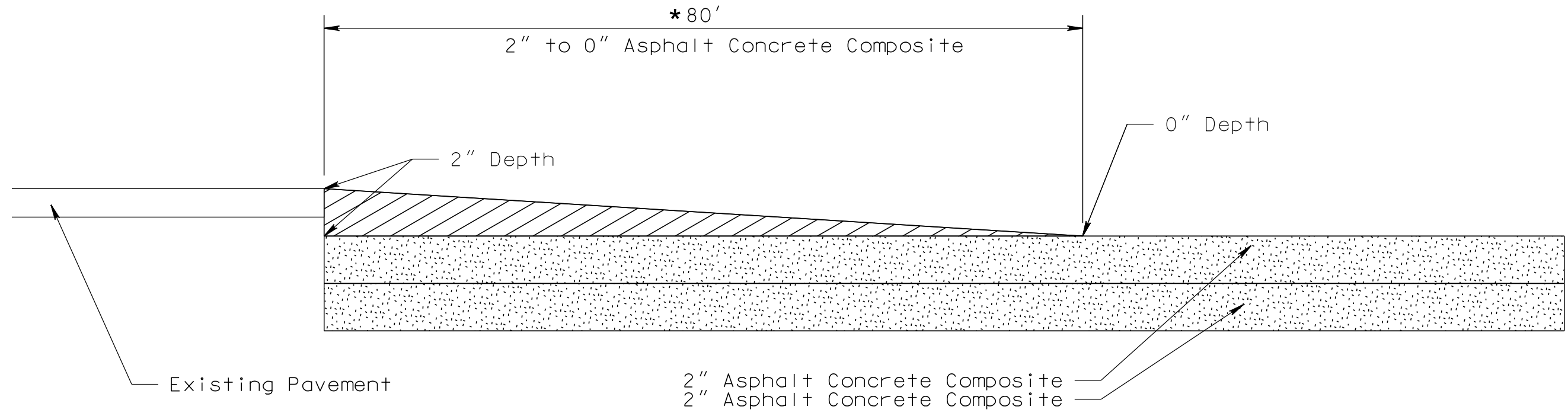
FILE - ... \06XN_TYPICAL SECTIONS.DGN

SURFACING TRANSITION LAYOUT

STATE OF SOUTH DAKOTA	PROJECT	SHEET	TOTAL SHEETS
	NH 0034(201)73	F5	F5

Plotting Date: 08/31/2023

-  Asphalt Concrete Composite
-  2" Asphalt Concrete Composite



PLOT SCALE - 1:24

PLOT NAME - 5

FILE - ... \COLD MILLING TRANSITION.DGN

PLOTTED FROM - IRP15123

* Transition length = 40' per inch of elevation change