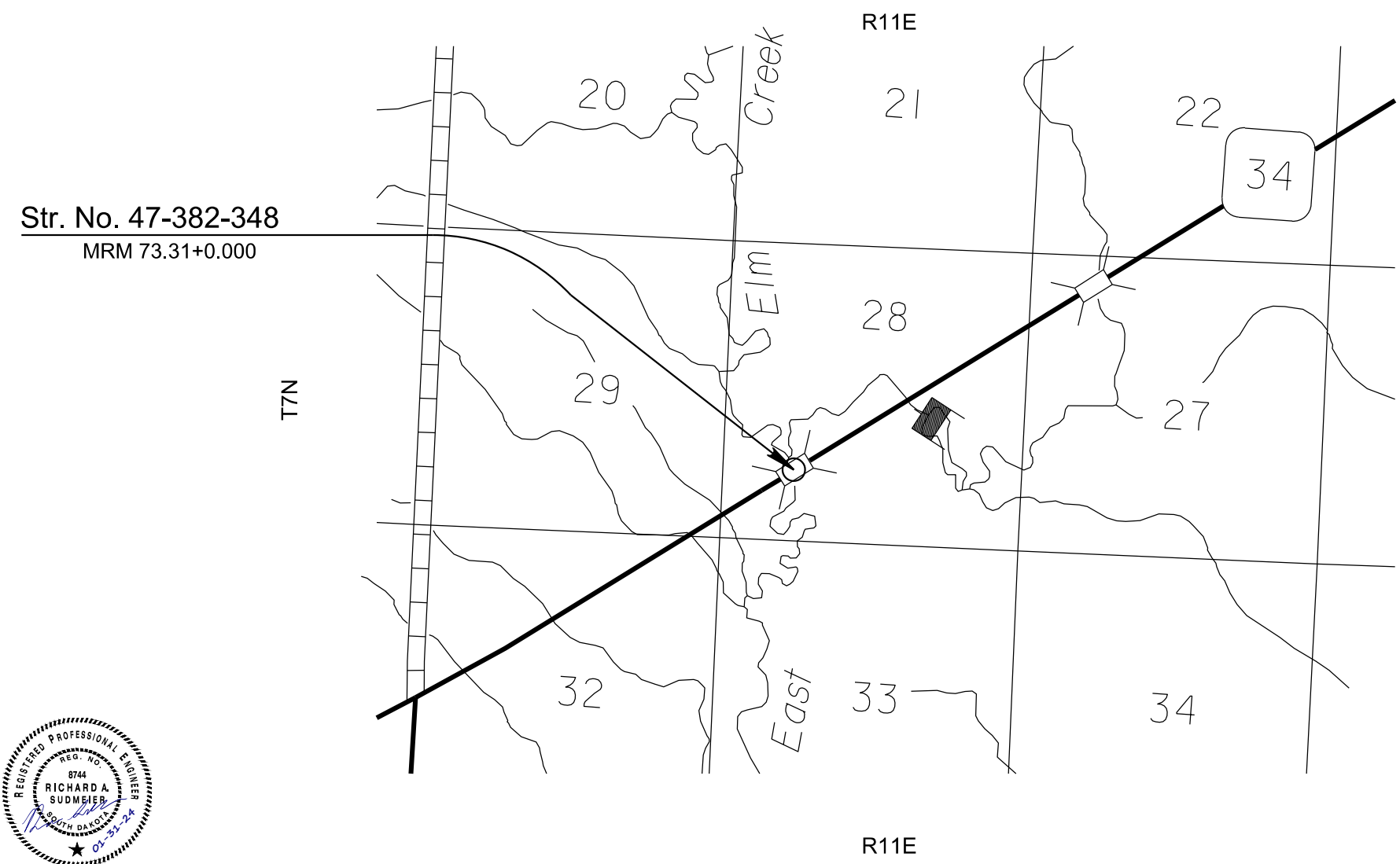


SECTION M: PAVEMENT MARKING PLANS

STATE OF SOUTH DAKOTA	PROJECT	SHEET	TOTAL SHEETS
	NH 0034(201)73	M1	M3
Plotting Date: 1/31/2024		Revised By: RS 1/31/2024	

INDEX OF SHEETS

M1	General Layout with Index
M2	Estimate of Quantities and General Notes
M3	Pavement Marking Layout



Plot Scale - 1:200

Plotted From - RSudmeier

Plotted From -

File - ...ICAD\Design Drawings\Item.dgn

SECTION M ESTIMATE OF QUANTITIES

BID ITEM NUMBER	ITEM	QUANTITY	UNIT
633E1220	High Build Waterborne Pavement Marking Paint, 4" White	1,140	Ft
633E1222	High Build Waterborne Pavement Marking Paint, 4" Yellow	548	Ft
634E0560	Remove Pavement Marking, 4" or Equivalent	50	Ft

PAVEMENT MARKING PAINT

All No Passing Zones will be reviewed prior to the application of any new centerline markings. The Contractor will advise the Engineer a minimum of 3 weeks prior to the application of permanent pavement markings to allow the State to mark the locations of No Pass Zones. State forces will not be available to mark the No Pass Zones from 07-24-24 to 08-12-24.

Application of permanent pavement marking will be completed within 14 calendar days following completion of the final surfacing.

HIGH BUILD WATERBORNE PAVEMENT MARKING PAINT

All materials will be applied as per manufacturer's recommendations. High build waterborne pavement marking paint will conform to the supplemental specifications for Section 980.1 B.

Reflective media will consist of glass beads.

High Build Waterborne Pavement Marking Paint applied after October 15 must be formulated as cold-weather waterborne paint. Cold weather waterborne paint will meet the requirements of Section 980.1 C.

RATES OF MATERIALS FOR HIGH BUILD WATERBORNE PAVEMENT MARKING PAINT

Solid 4" line = 27.8 Gals/Mile
 Dashed 4" line = 7.6 Gal/Mile
 Glass Beads = 8.0 Lbs/Gal.

All cost for materials, labor and equipment necessary to furnish and install the pavement markings will be incidental to the contract unit price for the respective High Build Waterborne Pavement Marking Paint items.

RETROREFLECTIVITY FOR PAVEMENT MARKING PAINT

The Department may take retroreflectivity readings on the pavement marking lines after 2 days and within 30 days of the line application using either a portable or mobile retroreflectometer that conforms to 30-meter geometry. If the Department chooses to take retroreflectivity readings, three retroreflectivity readings will be taken on each line at each test location. The three readings will be averaged and become the reading for that test location.

If the Department chooses to take retroreflectivity readings, three readings will be taken on the edge lines and lane lines in the direction of application. For combination solid yellow and skip yellow lines for turn lanes and for centerline markings on two-way roadways, three readings will be taken in one direction, the reflectometer will be turned 180 degrees and three more readings will be taken. The six readings for the centerline markings will be averaged and become the test reading for that test location.

If the Department chooses to take readings, the minimum retroreflectivity values will be 275 mc/m²/lux for white and 170 mc/m²/lux for yellow.

REMOVE PAVEMENT MARKING, 4" OR EQUIVALENT

A quantity of "Remove Pavement Marking, 4" or Equivalent has been included in the estimate of quantities to be used as required.

Markings that fall outside of the new groove will be obliterated using additional methods approved by the Engineer. Removal of the existing markings will be accomplished without causing damage to the pavement, pavement joints, or joint sealant. The Contractor will repair any damage to the pavement, pavement joints, or joint sealant for no additional payment and at no cost to the State. All costs for materials, labor, and equipment necessary to remove the existing markings will be incidental to the contract unit price per foot for "Remove Pavement Marking, 4" or Equivalent".

STATE OF SOUTH DAKOTA	PROJECT NH 0034(201)73	SHEET M2	TOTAL SHEETS M3
-----------------------	---------------------------	-------------	--------------------

Plotting Date: 6/19/2024 Revised By: RS 6/19/2024

1:200 Plot Scale -

Plotted From - RSudmeier

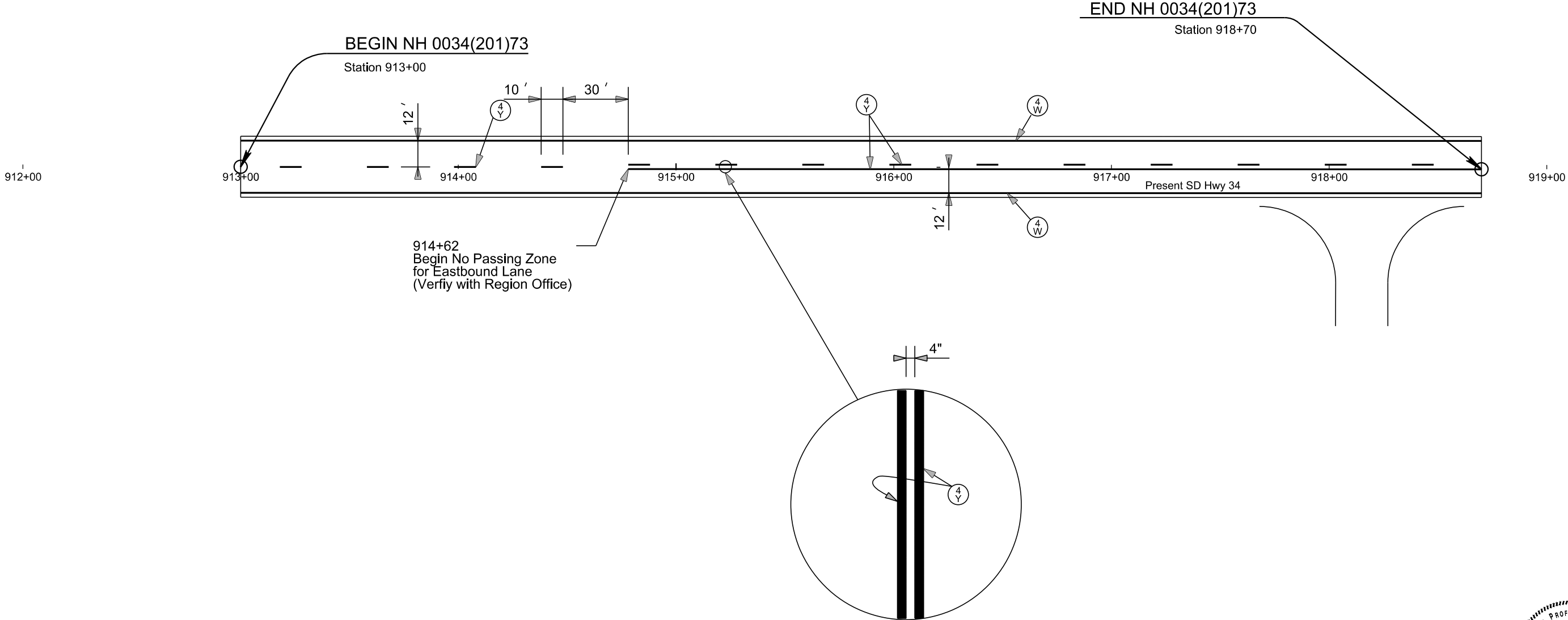
File - ...106XN_SectionM_Notes.dgn



PAVEMENT MARKING LAYOUT

STATE OF SOUTH DAKOTA	PROJECT NH 0034(201)73	SHEET M3	TOTAL SHEETS M3
Plotting Date: 12/11/2023		Revised By: RS 8/28/23	

ESTIMATE OF QUANTITIES			
KEY	ITEM	EST QUANT	UNIT
(4) W	High Build Pavement Marking Paint, 4" white	1140	FT
(4) Y	High Build Pavement Marking Paint, 4" yellow	548	FT
	Grooving for Durable Pavement Marking, 4"	1688	FT



Plot Scale - 1:50

Plotted From - RSudmeier

File - ...ICAD\Design Drawings\910pm.dgn

