

SECTION M: PAVEMENT MARKING PLANS

FOR BIDDING PURPOSES ONLY

STATE OF SOUTH DAKOTA	PROJECT IM 2292(105)3	SHEET NO. M1	TOTAL SHEETS M6
-----------------------	--------------------------	-----------------	--------------------

Plotting Date: 03/01/2024

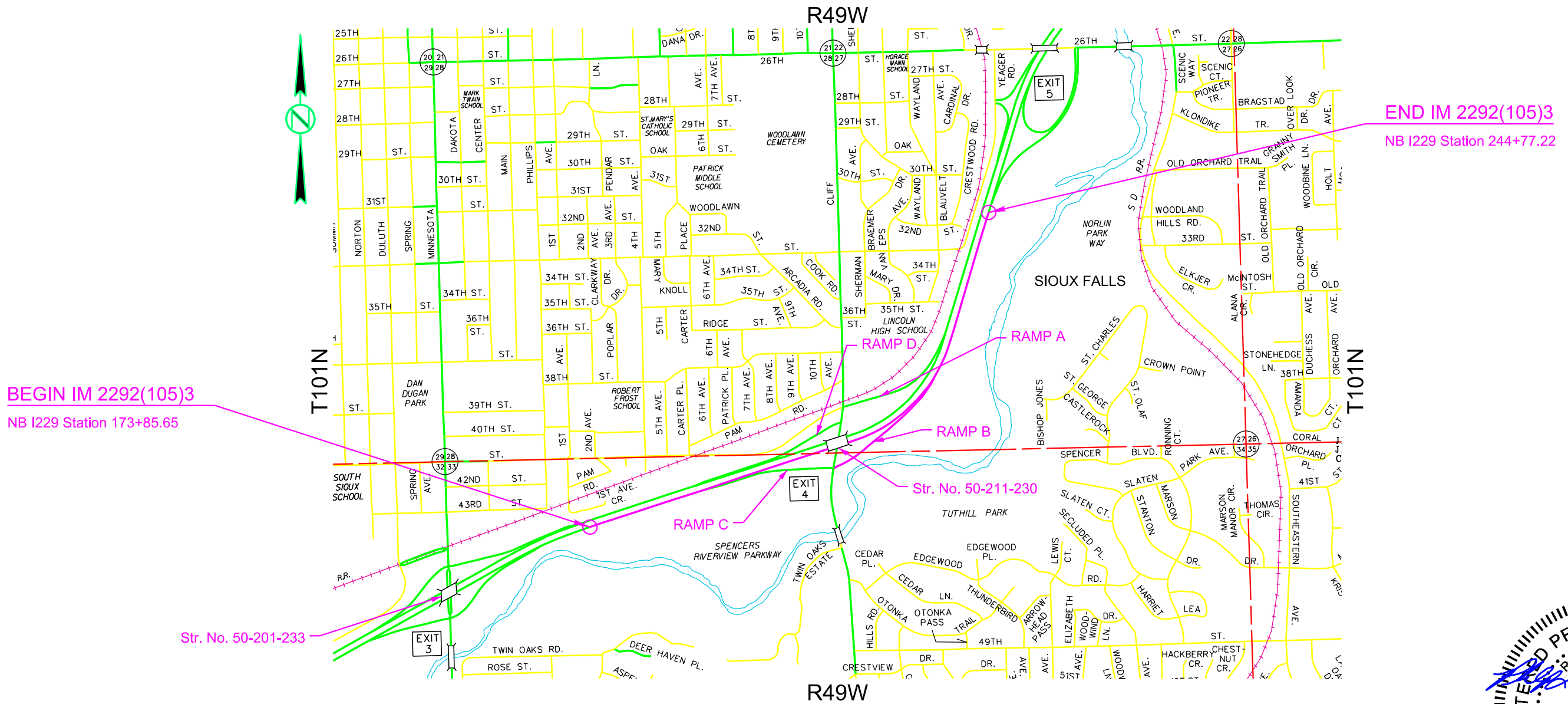
INDEX OF SHEETS

M1	General Layout with Index
M2	Estimate with General Notes and Tables
M3-M4	Diversion and Ramp Details
M5-M6	Standard Plates

Plot Scale - 1:1500

InfrastructureDesignGroup

Plotted From -



File - ...107\CVs_SectionM_Title.dgn

SECTION M ESTIMATE OF QUANTITIES

BID ITEM NUMBER	ITEM	QUANTITY	UNIT
633E0010	Cold Applied Plastic Pavement Marking, 4"	7,900	Ft
633E0030	Cold Applied Plastic Pavement Marking, 24"	100	Ft
633E0040	Cold Applied Plastic Pavement Marking, Arrow	7	Each
633E5000	Grooving for Cold Applied Plastic Pavement Marking, 4"	7,900	Ft
633E5015	Grooving for Cold Applied Plastic Pavement Marking, 24"	100	Ft
633E5025	Grooving for Cold Applied Plastic Pavement Marking, Arrow	7	Each

COLD APPLIED PLASTIC PAVEMENT MARKING

All materials will be applied as per the manufacturer's recommendations.

Cold Applied Plastic Pavement Markings will be 3M Series 380 AW or an approved equal.

GROOVING FOR COLD APPLIED PLASTIC PAVEMENT MARKING

The Contractor will establish a positive means for the removal of the grinding and/or grooving residue. Residue from dry grooving will be vacuumed. Solid residue will be removed from the pavement surfaces before being blown by traffic action or wind. The Contractor will conduct this work to control and minimize airborne dust and similar debris that may become a hazard to motor vehicle operation or nuisance to property owners. Residue from wet grooving will not be permitted to flow across lanes being used by public traffic or into gutter or drainage facilities. Residue, whether in solid or slurry form, will be disposed of in a manner that will prevent it from reaching any waterway in a concentrated state. The cleaning of the residue for grooving will be to the satisfaction of the Engineer and may require more than one pass to adequately remove material. All costs for removal of grinding and/or grooving residue will be included in the contract unit price per foot for "Grooving for Cold Applied Plastic Pavement Marking" contract item.



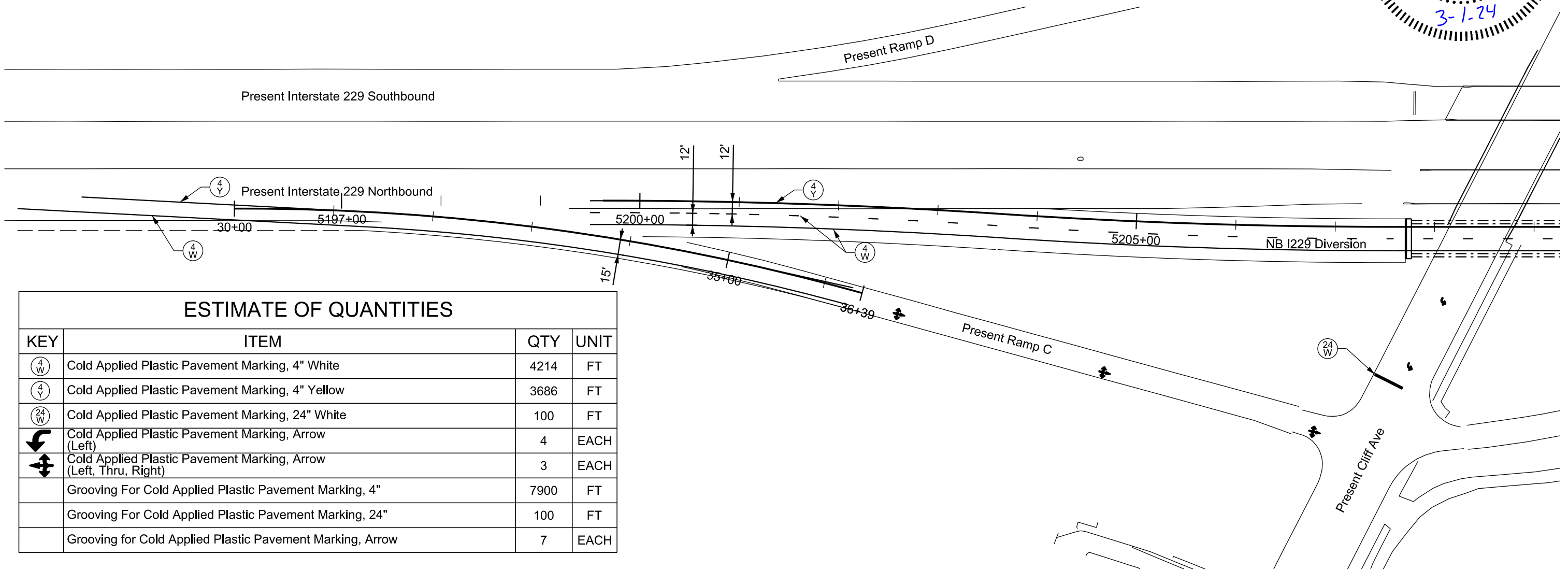
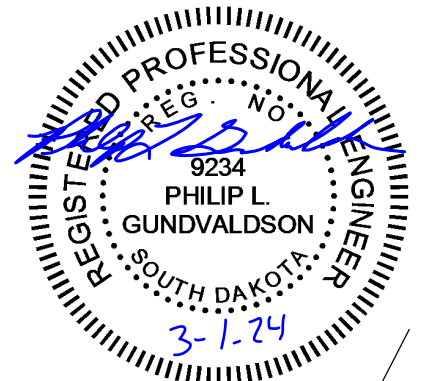
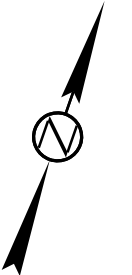
PAVEMENT MARKING PLAN

FOR BIDDING PURPOSES ONLY

STATE OF SOUTH DAKOTA	PROJECT IM 2292(105)3	SHEET NO. M3	TOTAL SHEETS M6
-----------------------	--------------------------	-----------------	--------------------

Plotting Date: 03/01/2024

Plot Scale - 1:100



ESTIMATE OF QUANTITIES

KEY	ITEM	QTY	UNIT
(4 W)	Cold Applied Plastic Pavement Marking, 4" White	4214	FT
(4 Y)	Cold Applied Plastic Pavement Marking, 4" Yellow	3686	FT
(24 W)	Cold Applied Plastic Pavement Marking, 24" White	100	FT
↙	Cold Applied Plastic Pavement Marking, Arrow (Left)	4	EACH
↔	Cold Applied Plastic Pavement Marking, Arrow (Left, Thru, Right)	3	EACH
	Grooving For Cold Applied Plastic Pavement Marking, 4"	7900	FT
	Grooving For Cold Applied Plastic Pavement Marking, 24"	100	FT
	Grooving for Cold Applied Plastic Pavement Marking, Arrow	7	EACH

Plotted From - InfrastructureDesignGroup

File - ...107Cys_SectionM_Layouts.dgn

PAVEMENT MARKING PLAN

FOR BIDDING PURPOSES ONLY

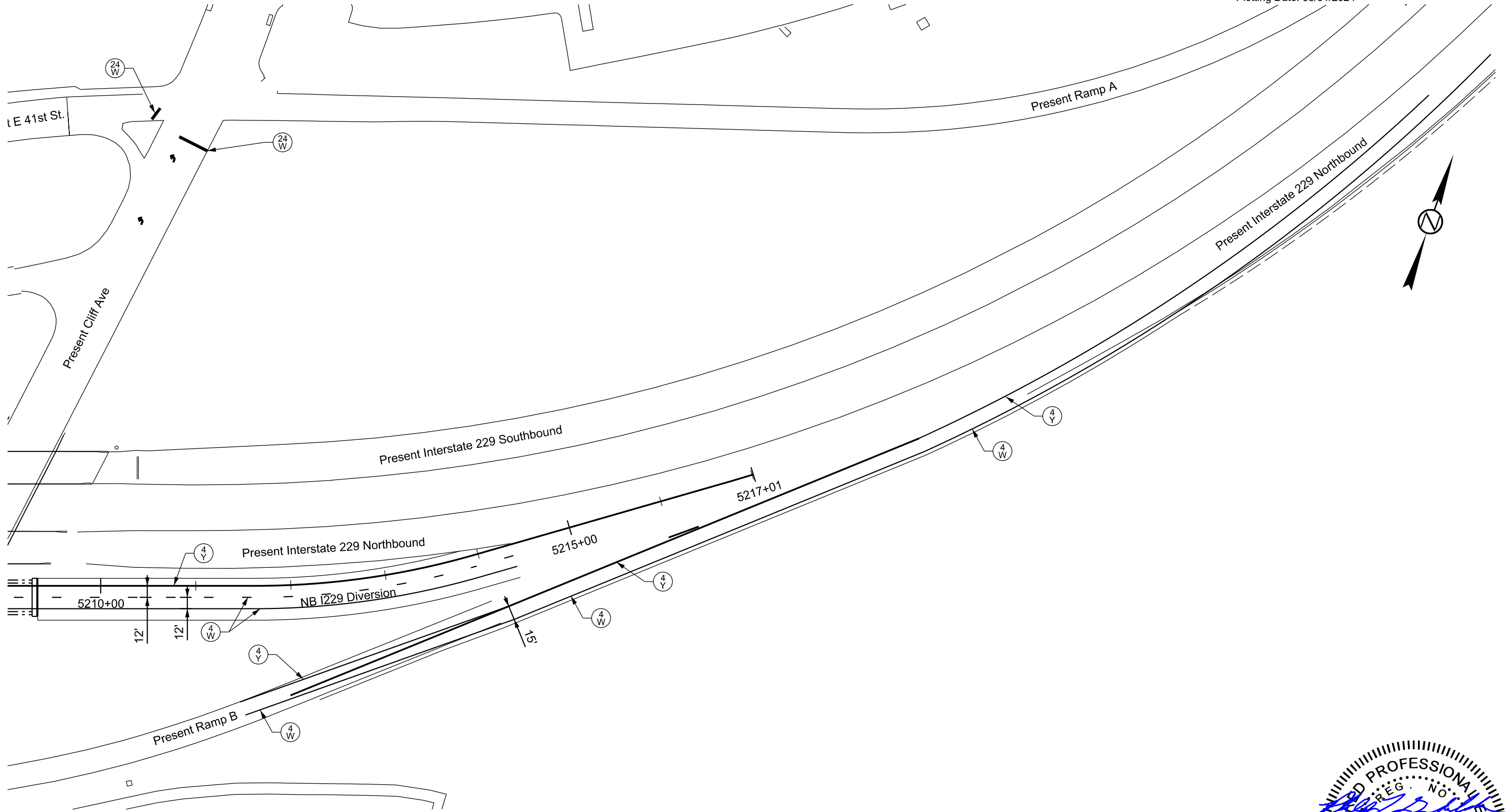
STATE OF SOUTH DAKOTA	PROJECT IM 2292(105)3	SHEET NO. M4	TOTAL SHEETS M6
-----------------------	--------------------------	-----------------	--------------------

Plotting Date: 03/01/2024

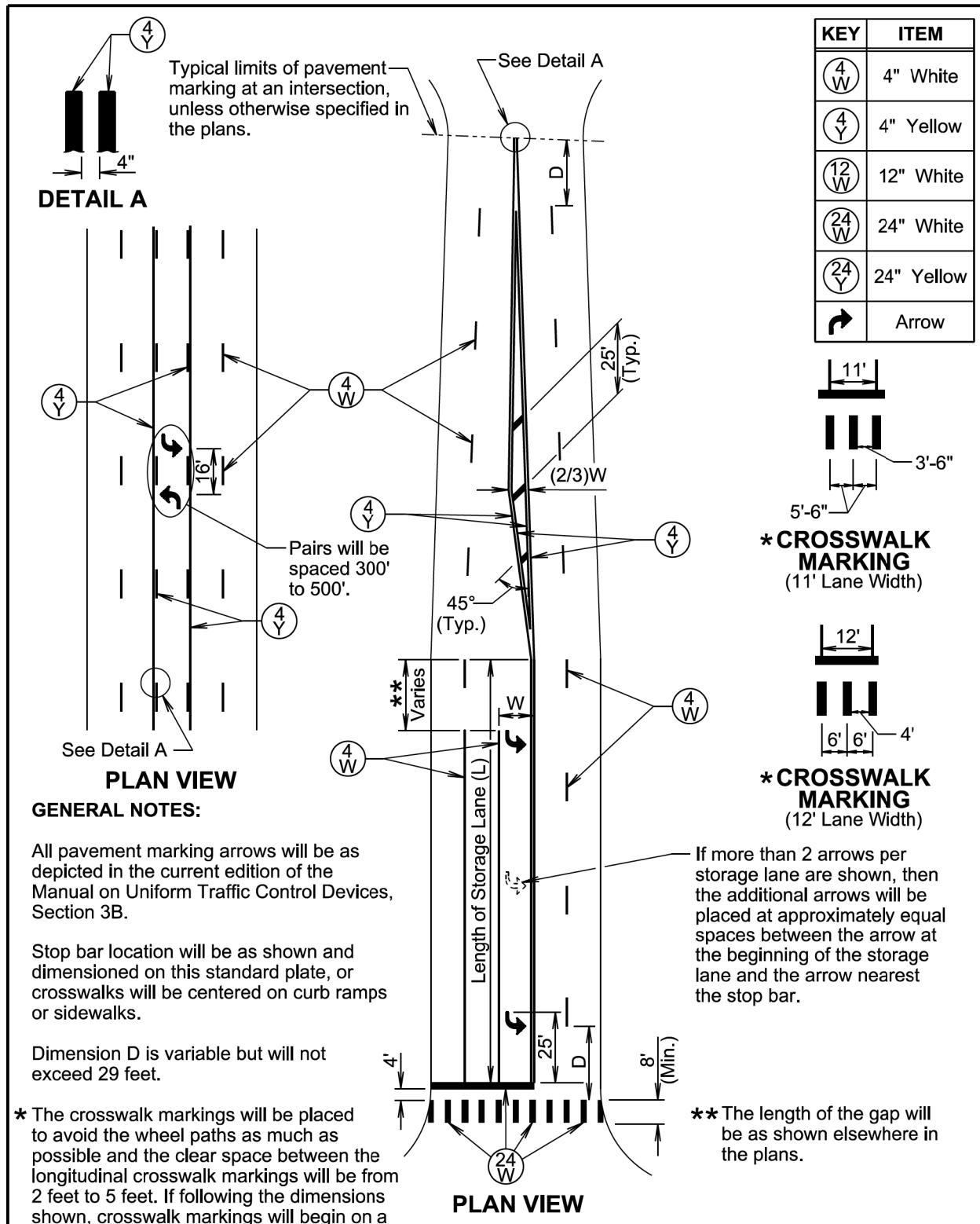
Plot Scale - 1:100

InfrastructureDesignGroup

Plotted From -



Plot Scale - N/A



GENERAL NOTES:

All pavement marking arrows will be as depicted in the current edition of the Manual on Uniform Traffic Control Devices, Section 3B.

Stop bar location will be as shown and dimensioned on this standard plate, or crosswalks will be centered on curb ramps or sidewalks.

Dimension D is variable but will not exceed 29 feet.

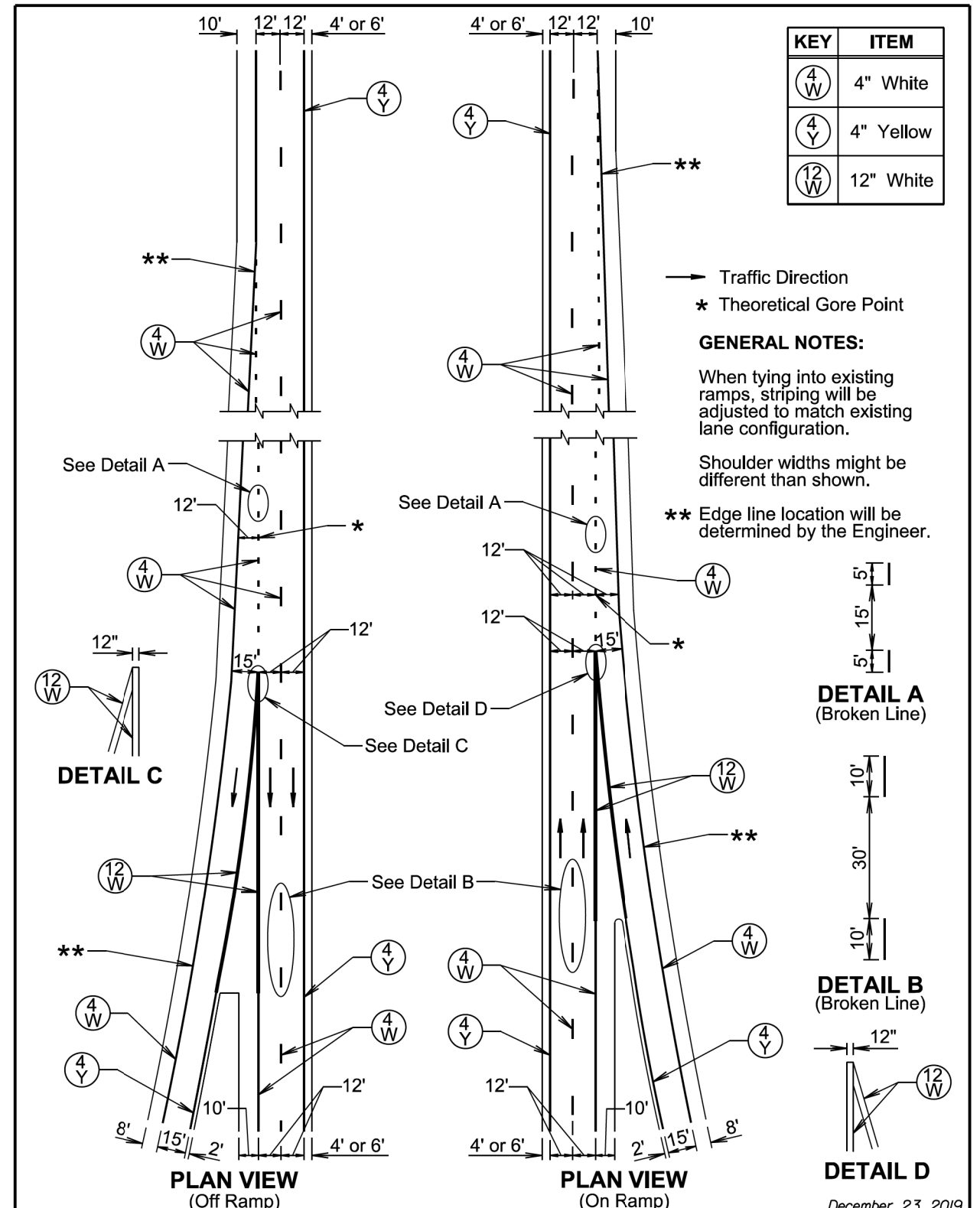
* The crosswalk markings will be placed to avoid the wheel paths as much as possible and the clear space between the longitudinal crosswalk markings will be from 2 feet to 5 feet. If following the dimensions shown, crosswalk markings will begin on a lane line or centerline.

If more than 2 arrows per storage lane are shown, then the additional arrows will be placed at approximately equal spaces between the arrow at the beginning of the storage lane and the arrow nearest the stop bar.

** The length of the gap will be as shown elsewhere in the plans.

September 22, 2021

Published Date: 2024	S D D O T	PLATE NUMBER 633.01
		Sheet 1 of 1



GENERAL NOTES:

When tying into existing ramps, striping will be adjusted to match existing lane configuration.

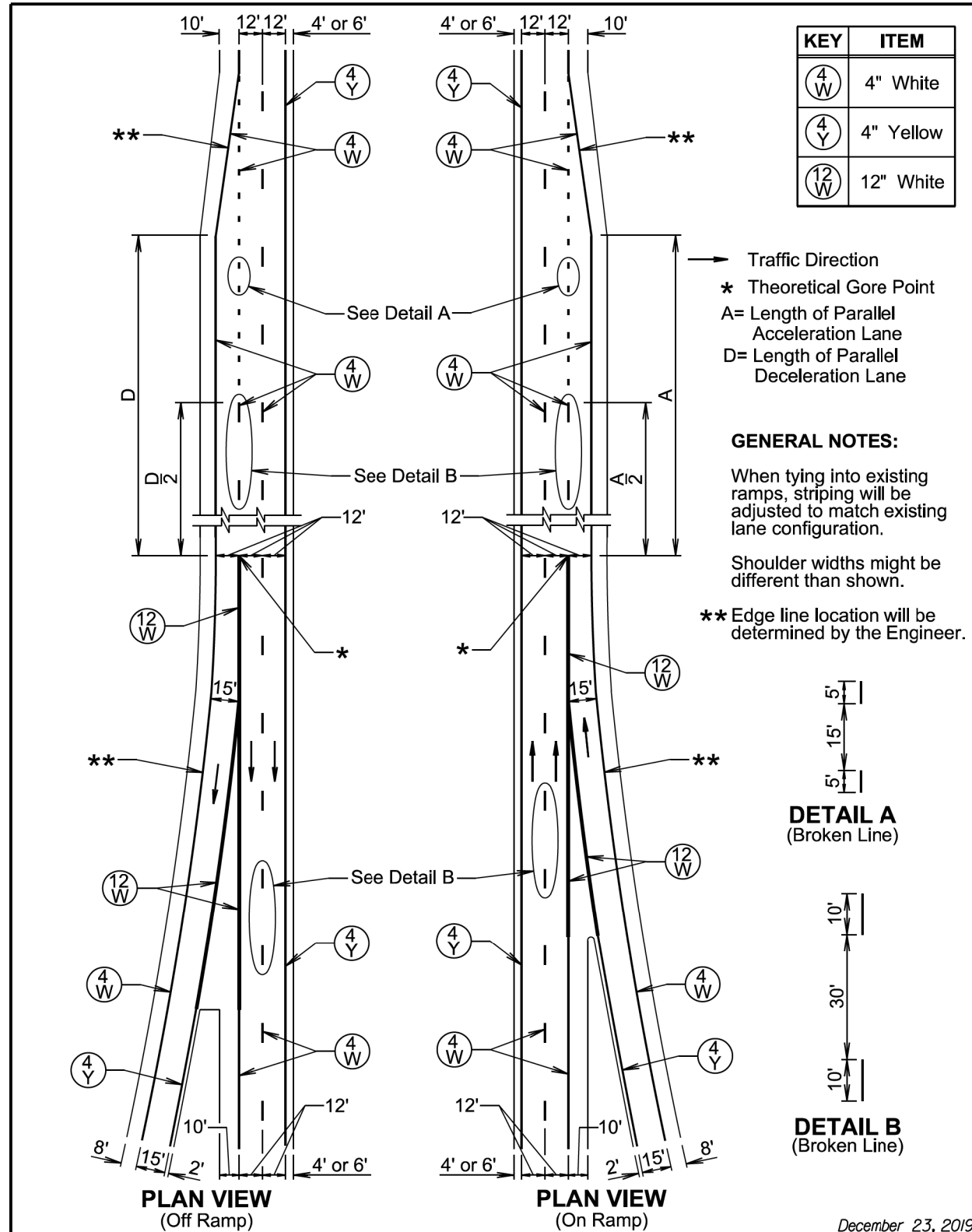
Shoulder widths might be different than shown.

** Edge line location will be determined by the Engineer.

December 23, 2019

Published Date: 2024	S D D O T	PLATE NUMBER 633.05
		Sheet 1 of 1

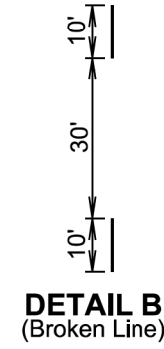
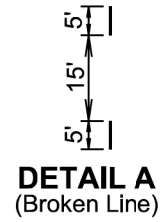
File - ...107CYs_SectionM_Plates.dgn



KEY	ITEM
(4W)	4" White
(4Y)	4" Yellow
(12W)	12" White

Traffic Direction
 * Theoretical Gore Point
 A= Length of Parallel Acceleration Lane
 D= Length of Parallel Deceleration Lane

GENERAL NOTES:
 When tying into existing ramps, striping will be adjusted to match existing lane configuration.
 Shoulder widths might be different than shown.
 ** Edge line location will be determined by the Engineer.



December 23, 2019

Published Date: 2024	S D D O T	PAVEMENT MARKING LAYOUT FOR PARALLEL INTERSTATE RAMPS	PLATE NUMBER 633.06
			Sheet 1 of 1